

Submit Copy To Appropriate District
Office
District I – (575) 393-6161
1625 N. French Dr., Hobbs, NM 88240
District II – (575) 748-1283
811 S. First St., Artesia, NM 88210
District III – (505) 334-6178
1000 Rio Brazos Rd., Aztec, NM 87410
District IV – (505) 476-3460
1220 S. St. Francis Dr., Santa Fe, NM
87505

State of New Mexico
Energy, Minerals and Natural Resources

Form C-103
Revised July 18, 2013

OIL CONSERVATION DIVISION
1220 South St. Francis Dr.
Santa Fe, NM 87505

WELL API NO. 30-015-22637
5. Indicate Type of Lease STATE <input checked="" type="checkbox"/> FEE <input type="checkbox"/>
6. State Oil & Gas Lease No. 309164
7. Lease Name or Unit Agreement Name EMPIRE ABO UNIT
8. Well Number 212
9. OGRID Number 873
10. Pool name or Wildcat EMPIRE;ABO 224040
11. Elevation (Show whether DR, RKB, RT, GR, etc.) 3650'

SUNDRY NOTICES AND REPORTS ON WELLS
(DO NOT USE THIS FORM FOR PROPOSALS TO DRILL OR TO DEEPEN OR PLUG BACK TO A DIFFERENT RESERVOIR. USE "APPLICATION FOR PERMIT" (FORM C-101) FOR SUCH PROPOSALS.)

1. Type of Well: Oil Well ☒ Gas Well ☐ Other

2. Name of Operator
Apache Corporation

3. Address of Operator
303 Veterans Airpark Lane, Suite 1000 Midland, TX 79705

4. Well Location
Unit Letter E: 2450 feet from the NORTH line and 400 feet from the WEST line
Section 06 Township 18S Range 28E NMPM County EDDY

12. Check Appropriate Box to Indicate Nature of Notice, Report or Other Data

NOTICE OF INTENTION TO:

PERFORM REMEDIAL WORK ☐ PLUG AND ABANDON ☐
TEMPORARILY ABANDON ☒ CHANGE PLANS ☐
PULL OR ALTER CASING ☐ MULTIPLE COMPL ☐
DOWNHOLE COMMINGLE ☐
CLOSED-LOOP SYSTEM ☐
OTHER: ta extension ☒

SUBSEQUENT REPORT OF:

REMEDIAL WORK ☐ ALTERING CASING ☐
COMMENCE DRILLING OPNS. ☐ P AND A ☐
CASING/CEMENT JOB ☐
OTHER: ☐

13. Describe proposed or completed operations. (Clearly state all pertinent details, and give pertinent dates, including estimated date of starting any proposed work). SEE RULE 19.15.7.14 NMAC. For Multiple Completions: Attach wellbore diagram of proposed completion or recompletion.

apache has completed the requested MIT and request 5 year TA extension

4/3/2023 MIT CHART ATTACHED

TA Status Approved until 5/01/2028

Spud Date:

12/4/1978

Rig Release Date:

I hereby certify that the information above is true and complete to the best of my knowledge and belief.

SIGNATURE alicia fulton TITLE Sr. Staff Reg Analyst DATE 4/3/2023

Type or print name Alicia Fulton E-mail address: alicia.fulton@apachecorp.com PHONE: (432) 818-1088

For State Use Only

APPROVED BY: [Signature] TITLE Staff Manager DATE 5/2/23
Conditions of Approval (if any):



SPL

Pressure Recorder Calibration Certificate

Company Name: Apache

Certificate #: 668613_111422

Recorder Type: Metco

Serial #: 668613

Pressure Range 1: 0-1000#

Accuracy: +/- 0.2% PSIG

Pressure Range 2: NA

Accuracy: +/- 0.2% PSIG

Temperature Range: NA

Accuracy: +/- 0.1% Deg. F

Pressure Pen 1

Temperature Pen

Increasing Pressure (PSIG)			Decreasing Pressure (PSIG)			Temperature Test (F°)		
Applied Pressure	Indicated Pressure	Error %	Applied Pressure	Indicated Pressure	Error %	Applied Temperature	Indicated Temperature	Error %
0	0	0	800	800	0	0	0	0
100	0	0	600	600	0	0	0	0
300	300	0	400	400	0	0	0	0
500	500	0	200	200	0	0	0	0
0	0	0	50	50	0	0	0	0
1000	1000	0	0	0	0	0	0	0

Pressure Pen 2

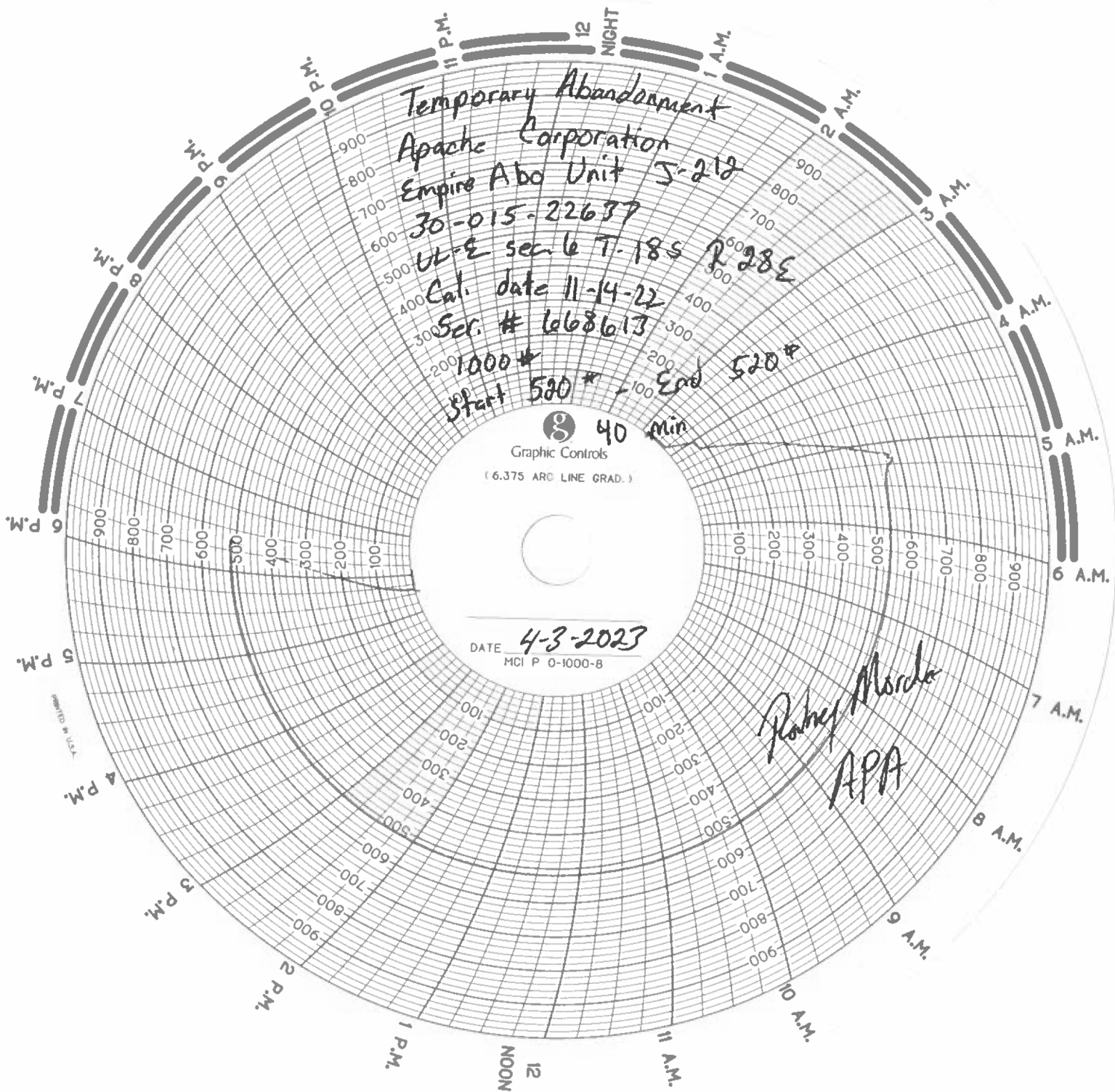
Increasing Pressure (PSIG)			Decreasing Pressure (PSIG)		
Applied Pressure	Indicated Pressure	Error %	Applied Pressure	Indicated Pressure	Error %
0	0	0	0	0	0
0	0	0	0	0	0
0	0	0	0	0	0
0	0	0	0	0	0
0	0	0	0	0	0
0	0	0	0	0	0

This is to certify that this instrument has been inspected and calibrated using a certified 10,000 psi Crystal Gauge.

Calibrated By: Chris Villeneuve

Calibration

Date: 11-14-2022



District I
1625 N. French Dr., Hobbs, NM 88240
Phone:(575) 393-6161 Fax:(575) 393-0720
District II
811 S. First St., Artesia, NM 88210
Phone:(575) 748-1283 Fax:(575) 748-9720
District III
1000 Rio Brazos Rd., Aztec, NM 87410
Phone:(505) 334-6178 Fax:(505) 334-6170
District IV
1220 S. St Francis Dr., Santa Fe, NM 87505
Phone:(505) 476-3470 Fax:(505) 476-3462

State of New Mexico
Energy, Minerals and Natural Resources
Oil Conservation Division
1220 S. St Francis Dr.
Santa Fe, NM 87505

CONDITIONS

Action 203578

CONDITIONS

Operator: APACHE CORPORATION 303 Veterans Airpark Ln Midland, TX 79705	OGRID: 873
	Action Number: 203578
	Action Type: [C-103] Sub. General Sundry (C-103Z)

CONDITIONS

Created By	Condition	Condition Date
gcordero	None	5/2/2023