

Well Name: SAKER 6-7 FEDERAL COM	Well Location: T24S / R35E / SEC 6 / LOT 1 /	County or Parish/State:
Well Number: 37H	Type of Well: OIL WELL	Allottee or Tribe Name:
Lease Number: NMNM14164	Unit or CA Name:	Unit or CA Number:
US Well Number: 3002548938	Well Status: Approved Application for Permit to Drill	Operator: OXY USA INCORPORATED

Notice of Intent

Sundry ID: 2714722

Type of Submission: Notice of Intent	Type of Action: APD Change
Date Sundry Submitted: 02/08/2023	Time Sundry Submitted: 12:22
Date proposed operation will begin: 03/31/2023	

Procedure Description: OXY USA Inc. respectfully requests to amend the subject well AAPD BHL and drilling plan casing, cementing and mud programs. See the attached well plat for the new BHL and drilling files for reference. The surface hole location is not changing. OLD BHL: 20' FSL 1640' FELO-7-T24S-R35E New BHL: 20' FSL 2306' FEL P-7-T24S-R35E

NOI Attachments

Procedure Description

- Saker6\_7FedCom37H\_TNSWedge461\_5.500in\_20.00ppf\_P110CY\_20230208122151.pdf
- Saker6\_7FedCom37H\_TNSWedge441\_5.500in\_20.00ppf\_P110CY\_20230208122146.pdf
- Saker6\_7FedCom37H\_TNSWedge425\_5.500in\_20.00ppf\_P110CY\_20230208122138.pdf
- Saker6\_7FedCom37H\_StandardSL1TiebackDetails\_20230208122129.pdf
- Saker6\_7FedCom37H\_DirectPlan\_20230208122120.pdf
- Saker6\_7FedCom37H\_DirectPlot\_20230208122115.pdf
- Saker6\_7FedCom37H\_DrillPlan\_20230208122109.pdf
- Saker6\_7FedCom37H\_13inADAPT\_10.75in\_7.625in\_10x10\_20230208122052.pdf
- Saker6\_7FedCom37H\_C102\_20230208121944.pdf

**Well Name:** SAKER 6-7 FEDERAL COM

**Well Location:** T24S / R35E / SEC 6 / LOT 1 /

**County or Parish/State:**

**Well Number:** 37H

**Type of Well:** OIL WELL

**Allottee or Tribe Name:**

**Lease Number:** NMNM14164

**Unit or CA Name:**

**Unit or CA Number:**

**US Well Number:** 3002548938

**Well Status:** Approved Application for Permit to Drill

**Operator:** OXY USA INCORPORATED

Conditions of Approval

Additional

SAKER\_6\_7\_FED\_COM\_37H\_\_\_SUNDRY\_COA\_20230405101434.pdf

Operator

I certify that the foregoing is true and correct. Title 18 U.S.C. Section 1001 and Title 43 U.S.C. Section 1212, make it a crime for any person knowingly and willfully to make to any department or agency of the United States any false, fictitious or fraudulent statements or representations as to any matter within its jurisdiction. Electronic submission of Sundry Notices through this system satisfies regulations requiring a

**Operator Electronic Signature:** LESLIE REEVES

**Signed on:** FEB 08, 2023 12:19 PM

**Name:** OXY USA INCORPORATED

**Title:** Advisor Regulatory

**Street Address:** 5 GREENWAY PLAZA, SUITE 110

**City:** HOUSTON

**State:** TX

**Phone:** (713) 497-2492

**Email address:** LESLIE\_REEVES@OXY.COM

Field

**Representative Name:**

**Street Address:**

**City:**

**State:**

**Zip:**

**Phone:**

**Email address:**

BLM Point of Contact

**BLM POC Name:** KEITH P IMMATTY

**BLM POC Title:** ENGINEER

**BLM POC Phone:** 5759884722

**BLM POC Email Address:** KIMMATTY@BLM.GOV

**Disposition:** Approved

**Disposition Date:** 04/05/2023

**Signature:** Keith Immatty

## PECOS DISTRICT DRILLING CONDITIONS OF APPROVAL

**All previous COAs still apply.**

OPERATOR'S NAME:	OXY USA INC.
LEASE NO.:	NMNM14164
WELL NAME & NO.:	SAKER 6-7 FEDERAL COM 37H
SURFACE HOLE FOOTAGE:	180'/N & 920'/E
BOTTOM HOLE FOOTAGE:	20'/S & 2306'/E
LOCATION:	Section 6, T.24 S., R.35 E.
COUNTY:	Lea County, New Mexico

COA

H2S	<input checked="" type="radio"/> Yes	<input type="radio"/> No	
Potash	<input checked="" type="radio"/> None	<input type="radio"/> Secretary	<input type="radio"/> R-111-P
Cave/Karst Potential	<input checked="" type="radio"/> Low	<input type="radio"/> Medium	<input type="radio"/> High
Cave/Karst Potential	<input type="radio"/> Critical		
Variance	<input type="radio"/> None	<input checked="" type="radio"/> Flex Hose	<input type="radio"/> Other
Wellhead	<input type="radio"/> Conventional	<input checked="" type="radio"/> Multibowl	<input type="radio"/> Both
Other	<input type="checkbox"/> 4 String Area	<input type="checkbox"/> Capitan Reef	<input type="checkbox"/> WIPP
Other	<input type="checkbox"/> Fluid Filled	<input checked="" type="checkbox"/> Cement Squeeze	<input type="checkbox"/> Pilot Hole
Special Requirements	<input type="checkbox"/> Water Disposal	<input checked="" type="checkbox"/> COM	<input type="checkbox"/> Unit

### A. CASING

#### Alternate Casing Design:

1. The **10-3/4** inch surface casing shall be set at approximately **857** feet (a minimum of **25 feet (Lea County)** into the Rustler Anhydrite and above the salt) and cemented to the surface.
  - a. If cement does not circulate to the surface, the appropriate BLM office shall be notified and a temperature survey utilizing an electronic type temperature survey with surface log readout will be used or a cement bond log shall be run to verify the top of the cement. Temperature survey will be run a minimum of six hours after pumping cement and ideally between 8-10 hours after completing the cement job.
  - b. Wait on cement (WOC) time for a primary cement job will be a minimum of **8 hours** or 500 pounds compressive strength, whichever is greater. (This is to include the lead cement)
  - c. Wait on cement (WOC) time for a remedial job will be a minimum of 4 hours

after bringing cement to surface or 500 pounds compressive strength, whichever is greater.

- d. If cement falls back, remedial cementing will be done prior to drilling out that string.
2. The 7-5/8 inch intermediate casing shall be set at approximately **11,199** feet. **Ensure casing is atleast half full during run for collapse safety factor.** The minimum required fill of cement behind the 7-5/8 inch intermediate casing is:

**Option 1 (Single Stage):**

- Cement to surface. If cement does not circulate see B.1.a, c-d above.  
**Wait on cement (WOC) time for a primary cement job is to include the lead cement slurry due to cave/karst or potash.**

**Option 2:**

Operator has proposed a DV tool, the depth may be adjusted as long as the cement is changed proportionally. The DV tool may be cancelled if cement circulates to surface on the first stage.

- a. First stage to DV tool: Cement to circulate. If cement does not circulate off the DV tool, contact the appropriate BLM office before proceeding with second stage cement job.
- b. Second stage above DV tool:
  - Cement to surface. If cement does not circulate, contact the appropriate BLM office.  
**Wait on cement (WOC) time for a primary cement job is to include the lead cement slurry due to cave/karst or potash.**

**Operator has proposed to pump down 10-3/4" X 7-5/8" annulus. Operator must top out cement after the bradenhead squeeze and verify cement to surface. Operator can also check TOC with Echo-meter. CBL must be run from TD of the 7-5/8" casing to surface if confidence is lacking on the quality of the bradenhead squeeze cement job. Submit results to BLM.**

3. The 5-1/2 inch production casing shall be set at approximately **22,136** feet. **Operator to run production casing as liner during drilling operations and bring in workover rig to tie-in production casing to surface.** The minimum required fill of cement behind the 5-1/2 inch production casing is:

**Option 1 (Single Stage):**

- Cement should tie-back at least **100 feet** into previous casing string. Operator shall provide method of verification.

### **Option 2:**

Operator has proposed a DV tool, the depth may be adjusted as long as the cement is changed proportionally. The DV tool may be cancelled if cement circulates to surface on the first stage.

- a. First stage to DV tool: Cement to circulate. If cement does not circulate off the DV tool, contact the appropriate BLM office before proceeding with second stage cement job.
- b. Second stage above DV tool:
  - Cement should tie-back at least **200 feet** into previous casing string. Operator shall provide method of verification.

## **GENERAL REQUIREMENTS**

The BLM is to be notified in advance for a representative to witness:

- a. Spudding well (minimum of 24 hours)
- b. Setting and/or Cementing of all casing strings (minimum of 4 hours)
- c. BOPE tests (minimum of 4 hours)

☒ Eddy County

Call the Carlsbad Field Office, 620 East Greene St., Carlsbad, NM 88220, (575) 361-2822

☒ Lea County

Call the Hobbs Field Station, 414 West Taylor, Hobbs NM 88240, (575) 689-5981

1. Unless the production casing has been run and cemented or the well has been properly plugged, the drilling rig shall not be removed from over the hole without prior approval.
  - a. In the event the operator has proposed to drill multiple wells utilizing a skid/walking rig. Operator shall secure the wellbore on the current well, after installing and testing the wellhead, by installing a blind flange of like pressure rating to the wellhead and a pressure gauge that can be monitored while drilling is performed on the other well(s).
  - b. When the operator proposes to set surface casing with Spudder Rig
    - Notify the BLM when moving in and removing the Spudder Rig.

- Notify the BLM when moving in the 2<sup>nd</sup> Rig. Rig to be moved in within 90 days of notification that Spudder Rig has left the location.
  - BOP/BOPE test to be conducted per Onshore Oil and Gas Order No. 2 as soon as 2nd Rig is rigged up on well.
2. Floor controls are required for 3M or Greater systems. These controls will be on the rig floor, unobstructed, readily accessible to the driller and will be operational at all times during drilling and/or completion activities. Rig floor is defined as the area immediately around the rotary table; the area immediately above the substructure on which the draw works are located, this does not include the dog house or stairway area.
  3. The record of the drilling rate along with the GR/N well log run from TD to surface (horizontal well – vertical portion of hole) shall be submitted to the BLM office as well as all other logs run on the borehole 30 days from completion. If available, a digital copy of the logs is to be submitted in addition to the paper copies. The Rustler top and top and bottom of Salt are to be recorded on the Completion Report.

#### A. CASING

1. Changes to the approved APD casing program need prior approval if the items substituted are of lesser grade or different casing size or are Non-API. The Operator can exchange the components of the proposal with that of superior strength (i.e. changing from J-55 to N-80, or from 36# to 40#). Changes to the approved cement program need prior approval if the altered cement plan has less volume or strength or if the changes are substantial (i.e. Multistage tool, ECP, etc.). The initial wellhead installed on the well will remain on the well with spools used as needed.
2. Wait on cement (WOC) for Potash Areas: After cementing but before commencing any tests, the casing string shall stand cemented under pressure until both of the following conditions have been met: 1) cement reaches a minimum compressive strength of 500 psi for all cement blends, 2) until cement has been in place at least 24 hours. WOC time will be recorded in the driller's log. The casing integrity test can be done (prior to the cement setting up) immediately after bumping the plug.
3. Wait on cement (WOC) for Water Basin: After cementing but before commencing any tests, the casing string shall stand cemented under pressure until both of the following conditions have been met: 1) cement reaches a minimum compressive strength of 500 psi at the shoe, 2) until cement has been in place at least 8 hours. WOC time will be recorded in the driller's log. See individual casing strings for details regarding lead cement slurry requirements. The casing integrity test can be done (prior to the cement setting up) immediately after bumping the plug.
4. Provide compressive strengths including hours to reach required 500 pounds compressive strength prior to cementing each casing string. Have well specific cement details onsite prior to pumping the cement for each casing string.

5. No pea gravel permitted for remedial or fall back remedial without prior authorization from the BLM engineer.
6. On that portion of any well approved for a 5M BOPE system or greater, a pressure integrity test of each casing shoe shall be performed. Formation at the shoe shall be tested to a minimum of the mud weight equivalent anticipated to control the formation pressure to the next casing depth or at total depth of the well. This test shall be performed before drilling more than 20 feet of new hole.
7. If hardband drill pipe is rotated inside casing, returns will be monitored for metal. If metal is found in samples, drill pipe will be pulled and rubber protectors which have a larger diameter than the tool joints of the drill pipe will be installed prior to continuing drilling operations.
8. Whenever a casing string is cemented in the R-111-P potash area, the NMOCD requirements shall be followed.

**B. PRESSURE CONTROL**

1. All blowout preventer (BOP) and related equipment (BOPE) shall comply with well control requirements as described in Onshore Oil and Gas Order No. 2 and API RP 53 Sec. 17.
2. If a variance is approved for a flexible hose to be installed from the BOP to the choke manifold, the following requirements apply: The flex line must meet the requirements of API 16C. Check condition of flexible line from BOP to choke manifold, replace if exterior is damaged or if line fails test. Line to be as straight as possible with no hard bends and is to be anchored according to Manufacturer's requirements. The flexible hose can be exchanged with a hose of equal size and equal or greater pressure rating. Anchor requirements, specification sheet and hydrostatic pressure test certification matching the hose in service, to be onsite for review. These documents shall be posted in the company man's trailer and on the rig floor.
3. 5M or higher system requires an HCR valve, remote kill line and annular to match. The remote kill line is to be installed prior to testing the system and tested to stack pressure.
4. If the operator has proposed a multi-bowl wellhead assembly in the APD. The following requirements must be met:
  - a. Wellhead shall be installed by manufacturer's representatives, submit documentation with subsequent sundry.
  - b. If the welding is performed by a third party, the manufacturer's representative shall monitor the temperature to verify that it does not exceed the maximum temperature of the seal.



- c. Manufacturer representative shall install the test plug for the initial BOP test.
  - d. Whenever any seal subject to test pressure is broken, all the tests in OOGO2.III.A.2.i must be followed.
  - e. If the cement does not circulate and one inch operations would have been possible with a standard wellhead, the well head shall be cut off, cementing operations performed and another wellhead installed.
- 5. The appropriate BLM office shall be notified a minimum of 4 hours in advance for a representative to witness the tests.
  - a. In a water basin, for all casing strings utilizing slips, these are to be set as soon as the crew and rig are ready and any fallback cement remediation has been done. The casing cut-off and BOP installation can be initiated four hours after installing the slips, which will be approximately six hours after bumping the plug. For those casing strings not using slips, the minimum wait time before cut-off is eight hours after bumping the plug. BOP/BOPE testing can begin after cut-off or once cement reaches 500 psi compressive strength (including lead when specified), whichever is greater. However, if the float does not hold, cut-off cannot be initiated until cement reaches 500 psi compressive strength (including lead when specified).
  - b. In potash areas, for all casing strings utilizing slips, these are to be set as soon as the crew and rig are ready and any fallback cement remediation has been done. For all casing strings, casing cut-off and BOP installation can be initiated at twelve hours after bumping the plug. However, **no tests** shall commence until the cement has had a minimum of 24 hours setup time, except the casing pressure test can be initiated immediately after bumping the plug (only applies to single stage cement jobs).
  - c. The tests shall be done by an independent service company utilizing a test plug not a cup or J-packer. The operator also has the option of utilizing an independent tester to test without a plug (i.e. against the casing) pursuant to Onshore Order 2 with the pressure not to exceed 70% of the burst rating for the casing. Any test against the casing must meet the WOC time for water basin (8 hours) or potash (24 hours) or 500 pounds compressive strength, whichever is greater, prior to initiating the test (see casing segment as lead cement may be critical item).
  - d. The test shall be run on a 5000 psi chart for a 2-3M BOP/BOP, on a 10000 psi chart for a 5M BOP/BOPE and on a 15000 psi chart for a 10M BOP/BOPE. If a linear chart is used, it shall be a one hour chart. A circular chart shall have a maximum 2 hour clock. If a twelve hour or twenty-four hour chart is used, tester shall make a notation that it is run with a two hour clock.
  - e. The results of the test shall be reported to the appropriate BLM office.



- f. All tests are required to be recorded on a calibrated test chart. A copy of the BOP/BOPE test chart and a copy of independent service company test will be submitted to the appropriate BLM office.
- g. The BOP/BOPE test shall include a low pressure test from 250 to 300 psi. The test will be held for a minimum of 10 minutes if test is done with a test plug and 30 minutes without a test plug. This test shall be performed prior to the test at full stack pressure.
- h. BOP/BOPE must be tested by an independent service company within 500 feet of the top of the Wolfcamp formation if the time between the setting of the intermediate casing and reaching this depth exceeds 20 days. This test does not exclude the test prior to drilling out the casing shoe as per Onshore Order No. 2.

#### C. DRILLING MUD

Mud system monitoring equipment, with derrick floor indicators and visual and audio alarms, shall be operating before drilling into the Wolfcamp formation, and shall be used until production casing is run and cemented.

#### D. WASTE MATERIAL AND FLUIDS

All waste (i.e. drilling fluids, trash, salts, chemicals, sewage, gray water, etc.) created as a result of drilling operations and completion operations shall be safely contained and disposed of properly at a waste disposal facility. No waste material or fluid shall be disposed of on the well location or surrounding area.

Porto-johns and trash containers will be on-location during fracturing operations or any other crew-intensive operations.

**KPI – 04/05/2023**

**District I**  
1625 N. French Dr., Hobbs, NM 88240  
Phone: (575) 393-6161 Fax: (575) 393-0720

**District II**  
811 S. First St., Artesia, NM 88210  
Phone: (575) 748-1283 Fax: (575) 748-9720

**District III**  
1000 Rio Brazos Road, Aztec, NM 87410  
Phone: (505) 334-6178 Fax: (505) 334-6170

**District IV**  
1220 S. St. Francis Dr., Santa Fe, NM 87505  
Phone: (505) 476-3460 Fax: (505) 476-3462

State of New Mexico  
Energy, Minerals & Natural Resources Department  
OIL CONSERVATION DIVISION  
1220 South St. Francis Dr.  
Santa Fe, NM 87505

Form C-102  
Revised August 1, 2011  
Submit one copy to appropriate  
District Office

☒ AMENDED REPORT

## WELL LOCATION AND ACREAGE DEDICATION PLAT

<sup>1</sup> API Number		<sup>2</sup> Pool Code		<sup>3</sup> Pool Name	
30-025-48938		2220		ANTELOPE RIDGE; WOLFCAMP	
<sup>4</sup> Property Code		<sup>5</sup> Property Name			<sup>6</sup> Well Number
330848		SAKER 6 7 FED COM			37H
<sup>7</sup> OGRID No.		<sup>8</sup> Operator Name			<sup>9</sup> Elevation
16696		OXY USA INC.			3450.1' (NAVD 88)

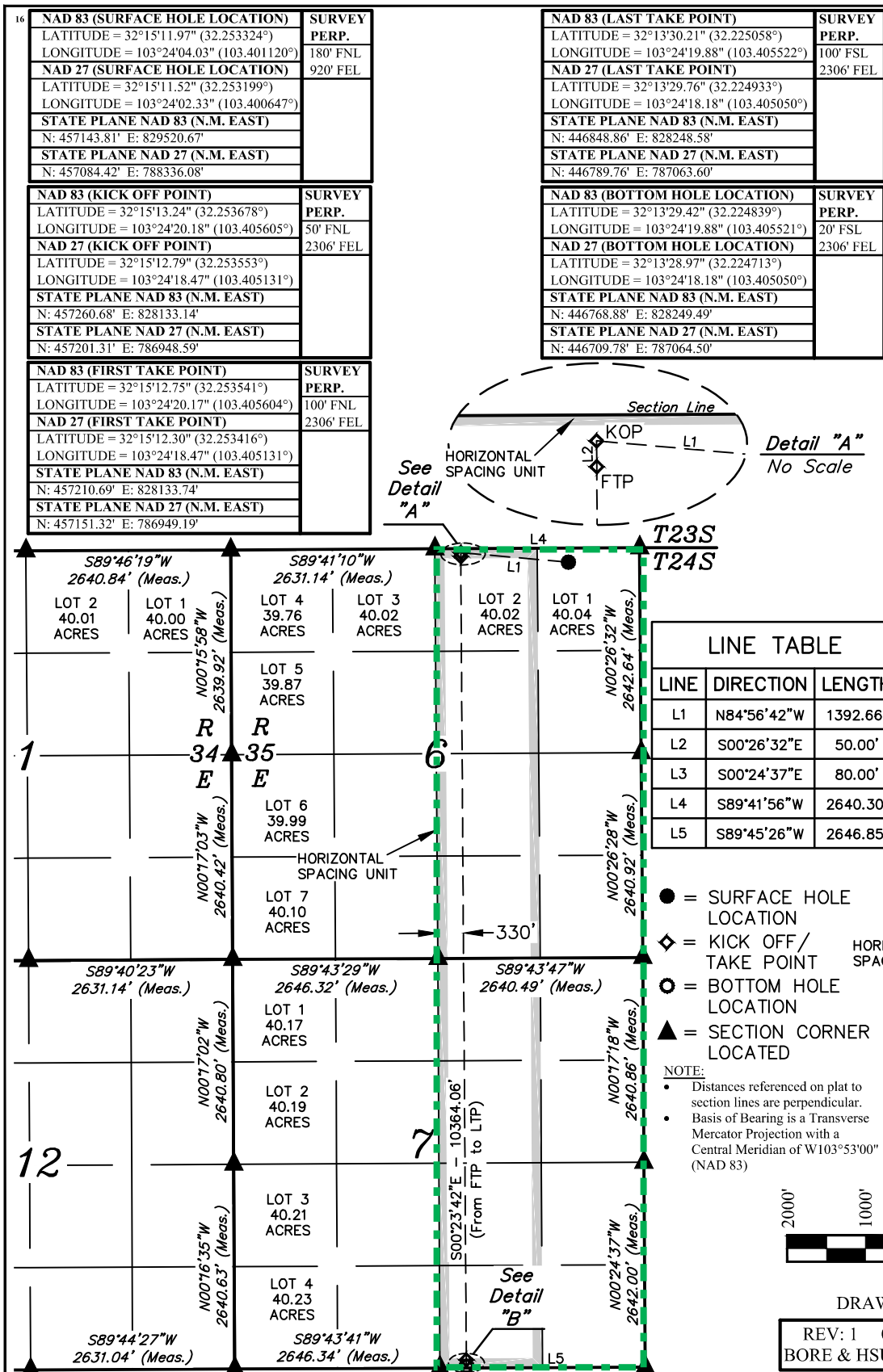
<sup>10</sup>Surface Location

UL or lot no. 1	Section 6	Township 24S	Range 35E	Lot Idn	Feet from the 180	North/South line NORTH	Feet from the 920	East/West line EAST	County LEA
--------------------	--------------	-----------------	--------------	---------	----------------------	---------------------------	----------------------	------------------------	---------------

" Bottom Hole Location If Different From Surface

UL or lot no. P	Section 7	Township 24S	Range 35E	Lot Idn	Feet from the 20	North/South line SOUTH	Feet from the 2306	East/West line EAST	County LEA
<sup>12</sup> Dedicated Acres 640.06		<sup>13</sup> Joint or Infill		<sup>14</sup> Consolidation Code		<sup>15</sup> Order No.			

No allowable will be assigned to this completion until all interests have been consolidated or a non-standard unit has been approved by the division.



## 17 OPERATOR CERTIFICATION

*I hereby certify that the information contained herein is true and complete to the best of my knowledge and belief, and that this organization either owns a working interest or unleased mineral interest in the land including the proposed bottom hole location or has a right to drill this well at this location pursuant to a contract with an owner of such a mineral or working interest, or to a voluntary pooling agreement or a compulsory pooling order heretofore entered by the division.*

*Leslie T. Reeves* 2-8-2023

---

Signature
Date

LESLIE REEVES

---

Printed Name

LESLIE\_REEVES@OXY.COM

E-mail Address

## 18 SURVEYOR CERTIFICATION

*I hereby certify that the well location shown on this plat was plotted from field notes of actual surveys made by me or under my supervision, and that the same is true and correct to the best of my belief.*

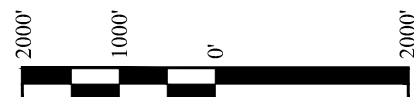
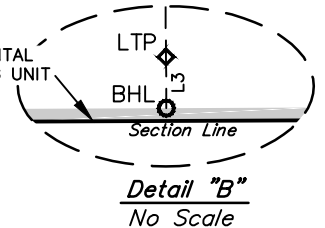
December 12, 2019

Date of Survey

Signature and Seal of Professional Surveyor:

LINE TABLE		
LINE	DIRECTION	LENGTH
L1	N84°56'42"W	1392.66'
L2	S00°26'32"E	50.00'
L3	S00°24'37"E	80.00'
L4	S89°41'56"W	2640.30'
L5	S89°45'26"W	2646.85'

Certificate Number:



SCALE  
DRAWN BY: D.P. 12-27-19

REV: 1 01-05-21 D.J.S. (WELL  
BORE & HSU CHANGES & ADD SEC.)

# Oxy USA Inc. - Saker 6\_7 Fed Com 37H

## Drill Plan

### 1. Geologic Formations

TVD of Target (ft):	12050	Pilot Hole Depth (ft):	
Total Measured Depth (ft):	22136	Deepest Expected Fresh Water (ft):	797

### Delaware Basin

Formation	MD-RKB (ft)	TVD-RKB (ft)	Expected Fluids
Rustler	797	797	
Salado	1058	1058	Salt
Castile	3386	3386	Salt
Delaware	5254	5254	Oil/Gas/Brine
Bell Canyon	5304	5304	Oil/Gas/Brine
Cherry Canyon	6200	6192	Oil/Gas/Brine
Brushy Canyon	7600	7557	Losses
Bone Spring	8817	8742	Oil/Gas
Bone Spring 1st	9980	9876	Oil/Gas
Bone Spring 2nd	10441	10325	Oil/Gas
Bone Spring 3rd	11492	11346	Oil/Gas
Wolfcamp	11893	11648	Oil/Gas
Penn			Oil/Gas
Strawn			Oil/Gas

\*H2S, water flows, loss of circulation, abnormal pressures, etc.

### 2. Casing Program

Section	Hole Size (in)	MD		TVD		Csg. OD (in)	Csg Wt. (ppf)	Grade	Conn.
		From (ft)	To (ft)	From (ft)	To (ft)				
Surface	14.75	0	857	0	857	10.75	45.5	J-55	BTC
Intermediate	9.875	0	6699	0	6560	7.625	26.4	L-80 HC	BTC
Intermediate	9.875	6699	11199	6560	11060	7.625	29.7	L-80 HC	BTC
Production	6.75	11099	22136	10960	12050	5.5	20	P-110	Wedge 461

All casing strings will be tested in accordance with Onshore Oil and Gas Order #2 III.B.1.h

\*Oxy requests the option to run production casing with DQX, TORQ DQW, Wedge 425, Wedge 461, and/or Wedge 441 connections to accommodate hole conditions or drilling operations.

All Casing SF Values will meet or exceed those below			
SF Collapse	SF Burst	Body SF Tension	Joint SF Tension
1.125	1.2	1.4	1.4

## Annular Clearance Variance Request

As per the agreement reached in the Oxy/BLM face-to-face meeting on Feb 22, 2018, Oxy requests permission to allow deviation from the 0.422" annular clearance requirement from Onshore Order #2 under the following conditions:

1. Annular clearance to meet or exceed 0.422" between intermediate casing ID and production casing coupling only on the first 500' overlap between both casings.
2. Annular clearance less than 0.422" is acceptable for the curve and lateral portions of the production open hole section.

	Y or N
Is casing new? If used, attach certification as required in Onshore Order #1	Y
Does casing meet API specifications? If no, attach casing specification sheet.	Y
Is premium or uncommon casing planned? If yes attach casing specification sheet.	Y
Does the above casing design meet or exceed BLM's minimum standards? If not provide justification (loading assumptions, casing design criteria).	Y
Will the intermediate pipe be kept at a minimum 1/3 fluid filled to avoid approaching the collapse pressure rating of the casing?	Y
Is well located within Capitan Reef?	N
If yes, does production casing cement tie back a minimum of 50' above the Reef?	
Is well within the designated 4 string boundary.	
Is well located in SOPA but not in R-111-P?	N
If yes, are the first 2 strings cemented to surface and 3 <sup>rd</sup> string cement tied back 500' into previous casing?	
Is well located in R-111-P and SOPA?	N
If yes, are the first three strings cemented to surface?	
Is 2 <sup>nd</sup> string set 100' to 600' below the base of salt?	
Is well located in high Cave/Karst?	N
If yes, are there two strings cemented to surface?	
(For 2 string wells) If yes, is there a contingency casing if lost circulation occurs?	
Is well located in critical Cave/Karst?	N
If yes, are there three strings cemented to surface?	

### 3. Cementing Program

Section	Stage	Slurry:	Sacks	Yield (ft <sup>3</sup> /ft)	Density (lb/gal)	Excess:	TOC	Placement	Description
Surface	1	Surface - Tail	717	1.33	14.8	100%	-	Circulate	Class C+Accel.
Int.	1	Intermediate 1S - Tail	458	1.65	13.2	5%	7,850	Circulate	Class H+Accel., Disper., Salt
Int.	2	Intermediate 2S - Tail BH	1215	1.71	13.3	25%	-	Bradenhead	Class C+Accel.
Prod.	1	Production - Tail	735	1.38	13.2	10%	11,099	Circulate	Class H+Ret., Disper., Salt

#### **Cement Top and Liner Overlap**

- Oxy is requesting permission to have minimum fill of cement behind the 5-1/2" production liner to be 100 ft into previous casing string  
 The reason for this is so that we can come back and develop shallower benches from the same 7.625" mainbore in the future
- Cement will be brought to the top of this liner hanger

## Offline Cementing

Oxy requests a variance to cement the 9.625" and/or 7.625" intermediate casing strings offline in accordance to the approved variance, EC Tran 461365.

The summarized operational sequence will be as follows:

Run casing as per normal operations. While running casing, conduct negative pressure test and confirm integrity of the float equipment (float collar and shoe).

Land casing.

Fill pipe with kill weight fluid, and confirm well is static.

If well Oxy requests a variance to cement the 9.625" and/or 7.625" intermediate casing strings offline in accordance to the approved variance, EC Tran 461365.

The summarized operational sequence will be as follows:

1. Run casing as per normal operations. While running casing, conduct negative pressure test and confirm integrity of the float equipment (float collar and shoe).
2. Land casing.
3. Fill pipe with kill weight fluid, and confirm well is static.
  - a. If well is not static notify BLM and kill well.
  - b. Once well is static notify BLM with intent to proceed with nipple down and offline cementing.
4. Set and pressure test annular packoff.
5. After confirmation of both annular barriers and internal barriers, nipple down BOP and install cap flange. If any barrier fails to test, the BOP stack will not be nipped down until after the cement job is completed.
6. Skid rig to next well on pad.
7. Confirm well is static before removing cap flange.
8. If well is not static notify BLM and kill well prior to cementing or nipping up for further remediation.
9. Install offline cement tool.
10. Rig up cement equipment.
  - a. Notify BLM prior to cement job.
11. Perform cement job.
12. Confirm well is static and floats are holding after cement job.
13. Remove cement equipment, offline cement tools and install night cap with pressure gauge for monitoring.

Oxy requests permission to adjust the CBL requirement after bradenhead cement jobs, on 7-5/8" intermediate casings, as per the agreement reached in the OXY/BLM meeting on September 5, 2019.

### Three string wells:

- CBL will be required on one well per pad
- If the pumped volume of cement is less than permitted in the APD, BLM will be notified and a CBL may be run
- Echometer will be used after bradenhead cement job to determine TOC before pumping top-out cement

#### 4. Pressure Control Equipment

BOP installed and tested before drilling which hole?	Size?	Min. Required WP	Type		✓	Tested to:	Deepest TVD Depth (ft) per Section:
9.875" Hole	13-5/8"	5M	Annular		✓	70% of working pressure	11060
		5M	Blind Ram		✓	250 psi / 5000 psi	
			Pipe Ram				
			Double Ram		✓		
			Other*				
6.75" Hole	13-5/8"	5M	Annular		✓	100% of working pressure	12050
		10M	Blind Ram		✓	250 psi / 10000 psi	
			Pipe Ram				
			Double Ram		✓		
			Other*				

\*Specify if additional ram is utilized

Per BLM's Memorandum No. NM-2017-008: *Decision and Rationale for a Variance Allowing the Use of a 5M Annular Preventer with a 10M BOP Stack*, Oxy requests to employ a 5M annular with a 10M BOPE stack in the pilot and lateral sections of the well and will ensure that two barriers to flow are maintained at all times. Please see attached Well Control Plan.

BOP/BOPE will be tested by an independent service company to 250 psi low and the high pressure indicated above per Onshore Order 2 requirements. The System may be upgraded to a higher pressure but still tested to the working pressure listed in the table above. If the system is upgraded all the components installed will be functional and tested.

Pipe rams will be operationally checked each 24 hour period. Blind rams will be operationally checked on each trip out of the hole. These checks will be noted on the daily tour sheets. Other accessories to the BOP equipment will include a Kelly cock and floor safety valve (inside BOP) and choke lines and choke manifold.



	Formation integrity test will be performed per Onshore Order #2.
	On Exploratory wells or on that portion of any well approved for a 5M BOPE system or greater, a pressure integrity test of each casing shoe shall be performed. Will be tested in accordance with Onshore Oil and Gas Order #2 III.B.1.i.
	A variance is requested for the use of a flexible choke line from the BOP to Choke Manifold. See attached for specs and hydrostatic test chart.
Y	Are anchors required by manufacturer?
	A multibowl or a unionized multibowl wellhead system will be employed. The wellhead and connection to the BOPE will meet all API 6A requirements. The BOP will be tested per Onshore Order #2 after installation on the surface casing which will cover testing requirements for a maximum of 30 days. If any seal subject to test pressure is broken the system must be tested. We will test the flange connection of the wellhead with a test port that is directly in the flange. We are proposing that we will run the wellhead through the rotary prior to cementing surface casing as discussed with the BLM on October 8, 2015.  See attached schematics.

## BOP Break Testing Request

Oxy requests permission to adjust the BOP break testing requirements as per the agreement reached in the OXY/BLM meeting on September 5, 2019.

BOP break test under the following conditions:

- After a full BOP test is conducted
- When skidding to drill an intermediate section where ICP is set into the third Bone Spring or shallower.

If the kill line is broken prior to skid, two tests will be performed.

- 1) Wellhead flange, co-flex hose, kill line connections and upper pipe rams
- 2) Wellhead flange, HCR valve, check valve, upper pipe rams

If the kill line is not broken prior to skid, only one test will be performed.

- 1) Wellhead flange, co-flex hose, check valve, upper pipe rams

**Oxy will use Cameron ADAPT wellhead system that uses an OEC top flange connection. This connection has been fully vetted and verified by API to Spec 6A and carries an API monogram.**

## 5. Mud Program

Section	Depth - MD		Depth - TVD		Type	Weight (ppg)	Viscosity	Water Loss
	From (ft)	To (ft)	From (ft)	To (ft)				
Surface	0	857	0	857	Water-Based Mud	8.6 - 8.8	40-60	N/C
Intermediate	857	11199	857	11060	Saturated Brine-Based or Oil-Based Mud	8.0 - 10.0	35-45	N/C
Production	11199	22136	11060	12050	Water-Based or Oil-Based Mud	9.5 - 12.5	38-50	N/C

Sufficient mud materials to maintain mud properties and meet minimum lost circulation and weight increase requirements will be kept on location at all times. The following is a general list of products: Barite, Bentonite, Gypsum, Lime, Soda Ash, Caustic Soda, Nut Plug, Cedar Fiber, Cotton Seed Hulls, Drilling Paper, Salt Water Clay, CACL2. Oxy will use a closed mud system.

What will be used to monitor the loss or gain of fluid?	PVT/MD Totco/Visual Monitoring
---	--------------------------------

## 6. Logging and Testing Procedures

Logging, Coring and Testing.	
Yes	Will run GR from TD to surface (horizontal well – vertical portion of hole).
	Stated logs run will be in the Completion Report and submitted to the BLM.
No	Logs are planned based on well control or offset log information.
No	Drill stem test? If yes, explain
No	Coring? If yes, explain

Additional logs planned	Interval
No	Resistivity
No	Density
Yes	CBL
Yes	Mud log
No	PEX

## 7. Drilling Conditions

Condition	Specify what type and where?
BH Pressure at deepest TVD	7833 psi
Abnormal Temperature	No
BH Temperature at deepest TVD	177°F

Pump high viscosity sweeps as needed for hole cleaning. The mud system will be monitored visually/manually as well as with an electronic PVT. The necessary mud products for additional weight and fluid loss control will be on location at all times. Appropriately weighted mud will be used to isolate potential gas, oil, and water zones until such time as casing can be cemented into place for zonal

Hydrogen Sulfide (H2S) monitors will be installed prior to drilling out the surface shoe. If H2S is detected in concentrations greater than 100 ppm, the operator will comply with the provisions of Onshore Oil and Gas Order #6. If Hydrogen Sulfide is encountered, measured values and formations will be provided to the BLM.

N	H2S is present
Y	H2S Plan attached

## 8. Other facets of operation

	Yes/No
Will the well be drilled with a walking/skidding operation? If yes, describe. We plan to drill the 3 well pad in batch by section: all surface sections, intermediate sections and production sections. The wellhead will be secured with a night cap whenever the rig is not over the well.	Yes
Will more than one drilling rig be used for drilling operations? If yes, describe. Oxy requests the option to contract a Surface Rig to drill, set surface casing, and cement for this well. If the timing between rigs is such that Oxy would not be able to preset surface, the Primary Rig will MIRU and drill the well in its entirety per the APD. Please see the attached document for information on the spudder rig.	Yes

**Total Estimated Cuttings Volume:** 1645 bbls

### Attachments

- ☒ Directional Plan
- ☒ H2S Contingency Plan
- ☒ Flex III Attachments
- ☒ Spudder Rig Attachment
- ☒ Premium Connection Specs

## 9. Company Personnel

Name	Title	Office Phone	Mobile Phone
Garrett Granier	Drilling Engineer	713-513-6633	832-265-0581
Derek Adam	Drilling Engineer Supervisor	713-366-5170	916-802-8873
Casey Martin	Drilling Superintendent	713-497-2530	337-764-4278
Kevin Threadgill	Drilling Manager	713-366-5958	361-815-0788



Project: PRD NM DIRECTIONAL PLANS (NAD 1983)  
 Site: Saker 6\_7  
 Well: Saker 6\_7 Fed Com 37H  
 Wellbore: Wellbore #1  
 Design: Permitting Plan

## PROJECT DETAILS: NM DIRECTIONAL PLANS (NAD 1983)

Geodetic System: US State Plane 1983  
 Datum: North American Datum 1983  
 Ellipsoid: GRS 1980  
 Zone: New Mexico Eastern Zone

System Datum: Mean Sea Level

## WELL DETAILS: Saker 6\_7 Fed Com 37H

+N/-S	+E/-W	Northing	3450.10 Easting	Latitude 32.253324	Longitude -103.401120
0.00	0.00	457143.81	829520.67		

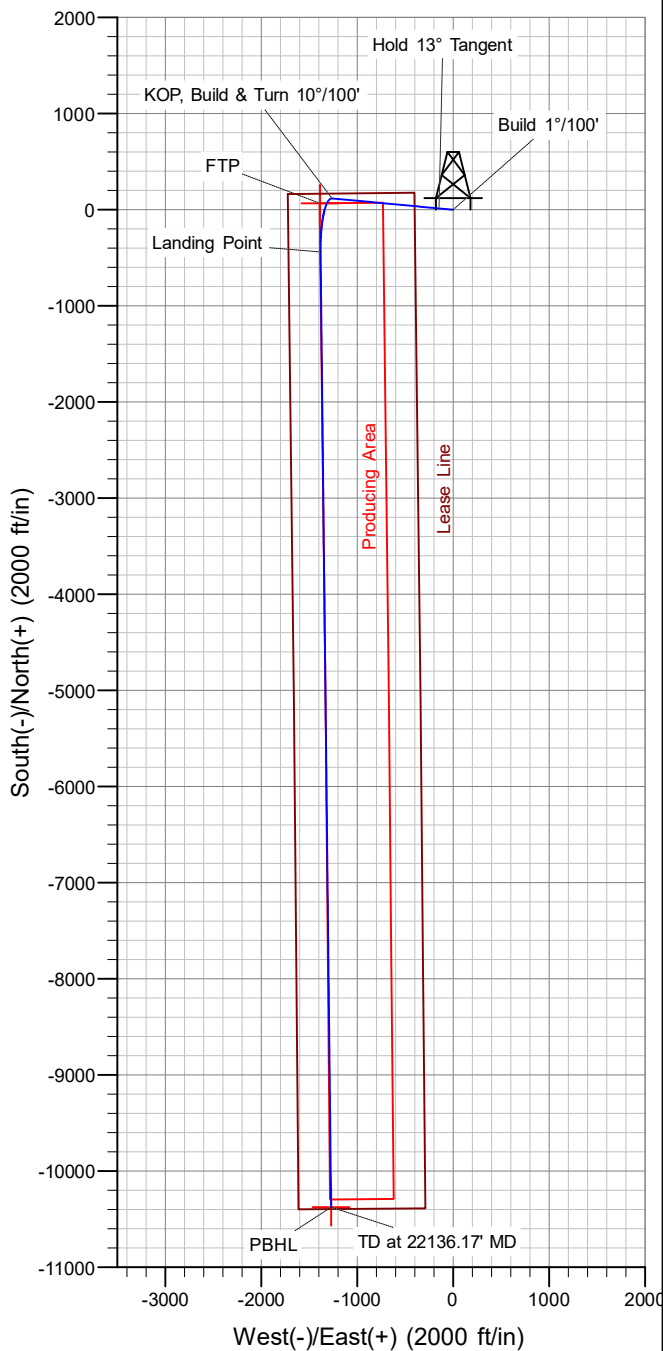
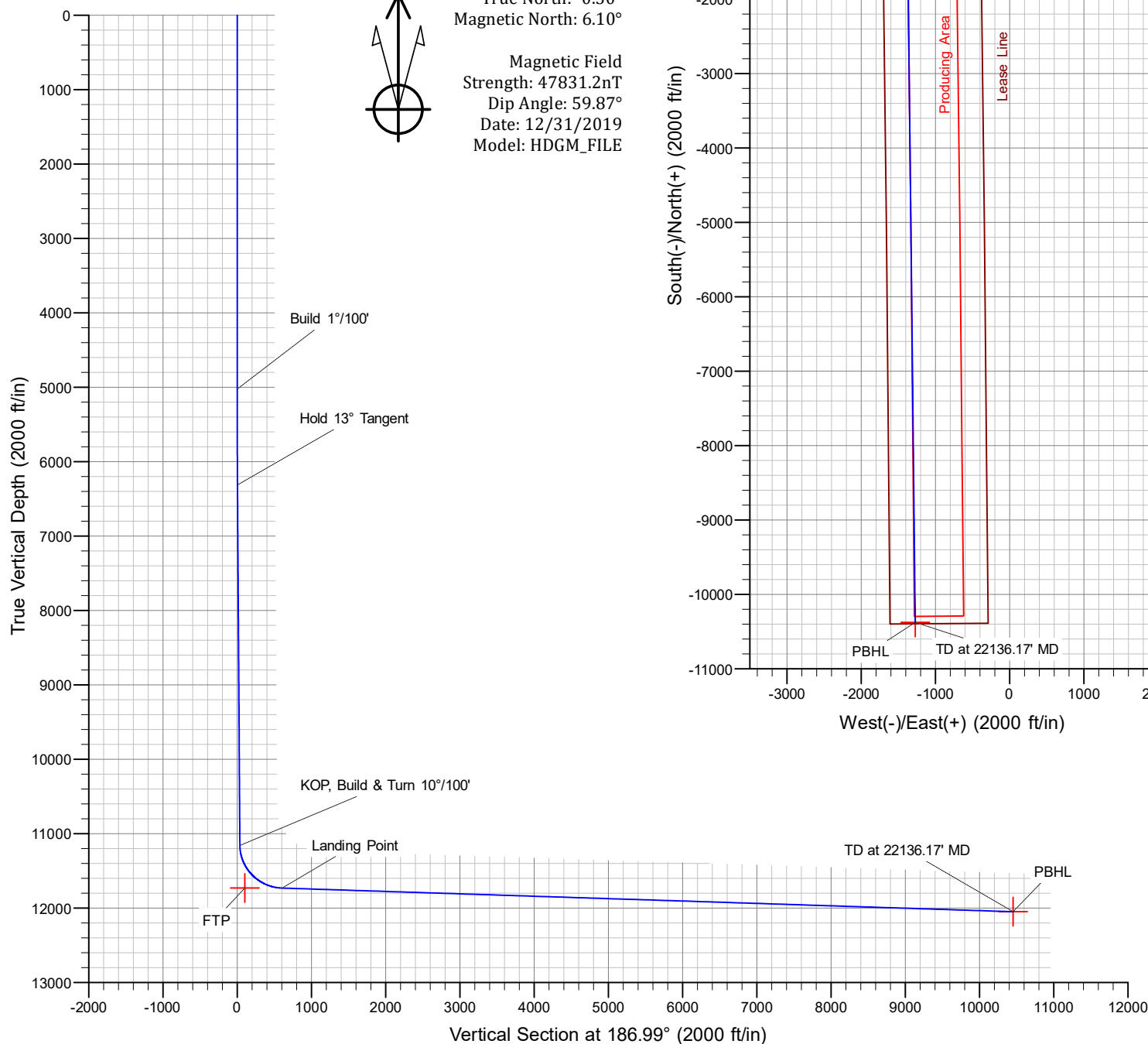
## SECTION DETAILS

MD	Inc	Azi	TVD	+N/-S	+E/-W	Dleg	TFace	VSec	Annotation
0.00	0.00	0.00	0.00	0.00	0.00	0.00	0.00	0.00	
5025.00	0.00	0.00	5025.00	0.00	0.00	0.00	0.00	0.00	Build 1°/100'
6325.11	13.00	275.34	6313.98	13.66	-146.24	1.00	275.34	4.22	Hold 13° Tangent
11298.60	13.00	275.34	11159.98	117.74	-1260.27	0.00	0.00	36.40	KOP, Build & Turn 10°/100'
12194.17	88.17	179.36	11732.11	-438.59	-1381.32	10.00	-96.23	603.32	Landing Point
22136.17	88.17	179.36	12049.60	-10374.91	-1271.18	0.00	0.00	10452.49	TD at 22136.17' MD



Azimuths to Grid North  
 True North: -0.50°  
 Magnetic North: 6.10°

Magnetic Field  
 Strength: 47831.2nT  
 Dip Angle: 59.87°  
 Date: 12/31/2019  
 Model: HDGM\_FILE



# **OXY**

**PRD NM DIRECTIONAL PLANS (NAD 1983)**

**Saker 6\_7**

**Saker 6\_7 Fed Com 37H**

**Wellbore #1**

**Plan: Permitting Plan**

## **Standard Planning Report**

**11 December, 2022**

OXY  
Planning Report

Database:	HOPSPP	Local Co-ordinate Reference:	Well Saker 6_7 Fed Com 37H
Company:	ENGINEERING DESIGNS	TVD Reference:	RKB=26.5' @ 3476.60ft
Project:	PRD NM DIRECTIONAL PLANS (NAD 1983)	MD Reference:	RKB=26.5' @ 3476.60ft
Site:	Saker 6_7	North Reference:	Grid
Well:	Saker 6_7 Fed Com 37H	Survey Calculation Method:	Minimum Curvature
Wellbore:	Wellbore #1		
Design:	Permitting Plan		

Project	PRD NM DIRECTIONAL PLANS (NAD 1983)		
Map System:	US State Plane 1983	System Datum:	Mean Sea Level
Geo Datum:	North American Datum 1983		
Map Zone:	New Mexico Eastern Zone		Using geodetic scale factor

Site	Saker 6_7		
Site Position:		Northing:	457,094.74 usft
From:	Map	Easting:	826,474.44 usft
Position Uncertainty:	1.00 ft	Slot Radius:	13.200 in
		Latitude:	32.253262
		Longitude:	-103.410974

Well	Saker 6_7 Fed Com 37H		
Well Position	+N/-S	0.00 ft	Northing:
	+E/-W	0.00 ft	Easting:
Position Uncertainty	1.00 ft	Wellhead Elevation:	ft
Grid Convergence:	0.50 °		
		Latitude:	32.253324
		Longitude:	-103.401120
		Ground Level:	3,450.10 ft

Wellbore	Wellbore #1				
Magnetics	Model Name	Sample Date	Declination (°)	Dip Angle (°)	Field Strength (nT)
	HDGM_FILE	12/31/2019	6.60	59.87	47,831.20000000

Design	Permitting Plan			
Audit Notes:				
Version:	Phase:	PROTOTYPE	Tie On Depth:	0.00
Vertical Section:	Depth From (TVD) (ft)	+N/-S (ft)	+E/-W (ft)	Direction (°)
	0.00	0.00	0.00	186.99

Plan Survey Tool Program	Date	12/11/2022		
Depth From (ft)	Depth To (ft)	Survey (Wellbore)	Tool Name	Remarks
1	0.00	22,136.17	Permitting Plan (Wellbore #1)	B001Mb_MWD+HRGM
				OWSG MWD + HRGM

Plan Sections										
Measured Depth (ft)	Inclination (°)	Azimuth (°)	Vertical Depth (ft)	+N/-S (ft)	+E/-W (ft)	Dogleg Rate (°/100ft)	Build Rate (°/100ft)	Turn Rate (°/100ft)	TFO (°)	Target
0.00	0.00	0.00	0.00	0.00	0.00	0.00	0.00	0.00	0.00	
5,025.00	0.00	0.00	5,025.00	0.00	0.00	0.00	0.00	0.00	0.00	
6,325.11	13.00	275.34	6,313.98	13.66	-146.24	1.00	1.00	0.00	275.34	
11,298.60	13.00	275.34	11,159.98	117.74	-1,260.27	0.00	0.00	0.00	0.00	
12,194.17	88.17	179.36	11,732.11	-438.59	-1,381.32	10.00	8.39	-10.72	-96.23	
22,136.18	88.17	179.36	12,049.60	-10,374.91	-1,271.18	0.00	0.00	0.00	0.00	PBHL (Saker 6_7)

# OXY

## Planning Report

<b>Database:</b>	HOPSPP	<b>Local Co-ordinate Reference:</b>	Well Saker 6_7 Fed Com 37H
<b>Company:</b>	ENGINEERING DESIGNS	<b>TVD Reference:</b>	RKB=26.5' @ 3476.60ft
<b>Project:</b>	PRD NM DIRECTIONAL PLANS (NAD 1983)	<b>MD Reference:</b>	RKB=26.5' @ 3476.60ft
<b>Site:</b>	Saker 6_7	<b>North Reference:</b>	Grid
<b>Well:</b>	Saker 6_7 Fed Com 37H	<b>Survey Calculation Method:</b>	Minimum Curvature
<b>Wellbore:</b>	Wellbore #1		
<b>Design:</b>	Permitting Plan		

Planned Survey									
Measured Depth (ft)	Inclination (°)	Azimuth (°)	Vertical Depth (ft)	+N/-S (ft)	+E/-W (ft)	Vertical Section (ft)	Dogleg Rate (°/100ft)	Build Rate (°/100ft)	Turn Rate (°/100ft)
0.00	0.00	0.00	0.00	0.00	0.00	0.00	0.00	0.00	0.00
100.00	0.00	0.00	100.00	0.00	0.00	0.00	0.00	0.00	0.00
200.00	0.00	0.00	200.00	0.00	0.00	0.00	0.00	0.00	0.00
300.00	0.00	0.00	300.00	0.00	0.00	0.00	0.00	0.00	0.00
400.00	0.00	0.00	400.00	0.00	0.00	0.00	0.00	0.00	0.00
500.00	0.00	0.00	500.00	0.00	0.00	0.00	0.00	0.00	0.00
600.00	0.00	0.00	600.00	0.00	0.00	0.00	0.00	0.00	0.00
700.00	0.00	0.00	700.00	0.00	0.00	0.00	0.00	0.00	0.00
800.00	0.00	0.00	800.00	0.00	0.00	0.00	0.00	0.00	0.00
900.00	0.00	0.00	900.00	0.00	0.00	0.00	0.00	0.00	0.00
1,000.00	0.00	0.00	1,000.00	0.00	0.00	0.00	0.00	0.00	0.00
1,100.00	0.00	0.00	1,100.00	0.00	0.00	0.00	0.00	0.00	0.00
1,200.00	0.00	0.00	1,200.00	0.00	0.00	0.00	0.00	0.00	0.00
1,300.00	0.00	0.00	1,300.00	0.00	0.00	0.00	0.00	0.00	0.00
1,400.00	0.00	0.00	1,400.00	0.00	0.00	0.00	0.00	0.00	0.00
1,500.00	0.00	0.00	1,500.00	0.00	0.00	0.00	0.00	0.00	0.00
1,600.00	0.00	0.00	1,600.00	0.00	0.00	0.00	0.00	0.00	0.00
1,700.00	0.00	0.00	1,700.00	0.00	0.00	0.00	0.00	0.00	0.00
1,800.00	0.00	0.00	1,800.00	0.00	0.00	0.00	0.00	0.00	0.00
1,900.00	0.00	0.00	1,900.00	0.00	0.00	0.00	0.00	0.00	0.00
2,000.00	0.00	0.00	2,000.00	0.00	0.00	0.00	0.00	0.00	0.00
2,100.00	0.00	0.00	2,100.00	0.00	0.00	0.00	0.00	0.00	0.00
2,200.00	0.00	0.00	2,200.00	0.00	0.00	0.00	0.00	0.00	0.00
2,300.00	0.00	0.00	2,300.00	0.00	0.00	0.00	0.00	0.00	0.00
2,400.00	0.00	0.00	2,400.00	0.00	0.00	0.00	0.00	0.00	0.00
2,500.00	0.00	0.00	2,500.00	0.00	0.00	0.00	0.00	0.00	0.00
2,600.00	0.00	0.00	2,600.00	0.00	0.00	0.00	0.00	0.00	0.00
2,700.00	0.00	0.00	2,700.00	0.00	0.00	0.00	0.00	0.00	0.00
2,800.00	0.00	0.00	2,800.00	0.00	0.00	0.00	0.00	0.00	0.00
2,900.00	0.00	0.00	2,900.00	0.00	0.00	0.00	0.00	0.00	0.00
3,000.00	0.00	0.00	3,000.00	0.00	0.00	0.00	0.00	0.00	0.00
3,100.00	0.00	0.00	3,100.00	0.00	0.00	0.00	0.00	0.00	0.00
3,200.00	0.00	0.00	3,200.00	0.00	0.00	0.00	0.00	0.00	0.00
3,300.00	0.00	0.00	3,300.00	0.00	0.00	0.00	0.00	0.00	0.00
3,400.00	0.00	0.00	3,400.00	0.00	0.00	0.00	0.00	0.00	0.00
3,500.00	0.00	0.00	3,500.00	0.00	0.00	0.00	0.00	0.00	0.00
3,600.00	0.00	0.00	3,600.00	0.00	0.00	0.00	0.00	0.00	0.00
3,700.00	0.00	0.00	3,700.00	0.00	0.00	0.00	0.00	0.00	0.00
3,800.00	0.00	0.00	3,800.00	0.00	0.00	0.00	0.00	0.00	0.00
3,900.00	0.00	0.00	3,900.00	0.00	0.00	0.00	0.00	0.00	0.00
4,000.00	0.00	0.00	4,000.00	0.00	0.00	0.00	0.00	0.00	0.00
4,100.00	0.00	0.00	4,100.00	0.00	0.00	0.00	0.00	0.00	0.00
4,200.00	0.00	0.00	4,200.00	0.00	0.00	0.00	0.00	0.00	0.00
4,300.00	0.00	0.00	4,300.00	0.00	0.00	0.00	0.00	0.00	0.00
4,400.00	0.00	0.00	4,400.00	0.00	0.00	0.00	0.00	0.00	0.00
4,500.00	0.00	0.00	4,500.00	0.00	0.00	0.00	0.00	0.00	0.00
4,600.00	0.00	0.00	4,600.00	0.00	0.00	0.00	0.00	0.00	0.00
4,700.00	0.00	0.00	4,700.00	0.00	0.00	0.00	0.00	0.00	0.00
4,800.00	0.00	0.00	4,800.00	0.00	0.00	0.00	0.00	0.00	0.00
4,900.00	0.00	0.00	4,900.00	0.00	0.00	0.00	0.00	0.00	0.00
5,000.00	0.00	0.00	5,000.00	0.00	0.00	0.00	0.00	0.00	0.00
5,025.00	0.00	0.00	5,025.00	0.00	0.00	0.00	0.00	0.00	0.00
5,100.00	0.75	275.34	5,100.00	0.05	-0.49	0.01	1.00	1.00	0.00
5,200.00	1.75	275.34	5,199.97	0.25	-2.66	0.08	1.00	1.00	0.00
5,300.00	2.75	275.34	5,299.89	0.61	-6.57	0.19	1.00	1.00	0.00



# OXY

## Planning Report

<b>Database:</b>	HOPSPP	<b>Local Co-ordinate Reference:</b>	Well Saker 6_7 Fed Com 37H
<b>Company:</b>	ENGINEERING DESIGNS	<b>TVD Reference:</b>	RKB=26.5' @ 3476.60ft
<b>Project:</b>	PRD NM DIRECTIONAL PLANS (NAD 1983)	<b>MD Reference:</b>	RKB=26.5' @ 3476.60ft
<b>Site:</b>	Saker 6_7	<b>North Reference:</b>	Grid
<b>Well:</b>	Saker 6_7 Fed Com 37H	<b>Survey Calculation Method:</b>	Minimum Curvature
<b>Wellbore:</b>	Wellbore #1		
<b>Design:</b>	Permitting Plan		

Planned Survey									
Measured Depth (ft)	Inclination (°)	Azimuth (°)	Vertical Depth (ft)	+N/-S (ft)	+E/-W (ft)	Vertical Section (ft)	Dogleg Rate (°/100ft)	Build Rate (°/100ft)	Turn Rate (°/100ft)
5,400.00	3.75	275.34	5,399.73	1.14	-12.21	0.35	1.00	1.00	0.00
5,500.00	4.75	275.34	5,499.46	1.83	-19.59	0.57	1.00	1.00	0.00
5,600.00	5.75	275.34	5,599.04	2.68	-28.70	0.83	1.00	1.00	0.00
5,700.00	6.75	275.34	5,698.44	3.69	-39.54	1.14	1.00	1.00	0.00
5,800.00	7.75	275.34	5,797.64	4.87	-52.11	1.51	1.00	1.00	0.00
5,900.00	8.75	275.34	5,896.60	6.20	-66.39	1.92	1.00	1.00	0.00
6,000.00	9.75	275.34	5,995.30	7.70	-82.40	2.38	1.00	1.00	0.00
6,100.00	10.75	275.34	6,093.70	9.35	-100.12	2.89	1.00	1.00	0.00
6,200.00	11.75	275.34	6,191.78	11.17	-119.54	3.45	1.00	1.00	0.00
6,300.00	12.75	275.34	6,289.50	13.14	-140.67	4.06	1.00	1.00	0.00
6,325.11	13.00	275.34	6,313.98	13.66	-146.24	4.22	1.00	1.00	0.00
6,400.00	13.00	275.34	6,386.95	15.23	-163.01	4.71	0.00	0.00	0.00
6,500.00	13.00	275.34	6,484.39	17.32	-185.41	5.36	0.00	0.00	0.00
6,600.00	13.00	275.34	6,581.83	19.41	-207.81	6.00	0.00	0.00	0.00
6,700.00	13.00	275.34	6,679.26	21.51	-230.21	6.65	0.00	0.00	0.00
6,800.00	13.00	275.34	6,776.70	23.60	-252.61	7.30	0.00	0.00	0.00
6,900.00	13.00	275.34	6,874.14	25.69	-275.01	7.94	0.00	0.00	0.00
7,000.00	13.00	275.34	6,971.57	27.79	-297.41	8.59	0.00	0.00	0.00
7,100.00	13.00	275.34	7,069.01	29.88	-319.81	9.24	0.00	0.00	0.00
7,200.00	13.00	275.34	7,166.44	31.97	-342.21	9.88	0.00	0.00	0.00
7,300.00	13.00	275.34	7,263.88	34.06	-364.61	10.53	0.00	0.00	0.00
7,400.00	13.00	275.34	7,361.32	36.16	-387.01	11.18	0.00	0.00	0.00
7,500.00	13.00	275.34	7,458.75	38.25	-409.41	11.82	0.00	0.00	0.00
7,600.00	13.00	275.34	7,556.19	40.34	-431.80	12.47	0.00	0.00	0.00
7,700.00	13.00	275.34	7,653.63	42.43	-454.20	13.12	0.00	0.00	0.00
7,800.00	13.00	275.34	7,751.06	44.53	-476.60	13.77	0.00	0.00	0.00
7,900.00	13.00	275.34	7,848.50	46.62	-499.00	14.41	0.00	0.00	0.00
8,000.00	13.00	275.34	7,945.94	48.71	-521.40	15.06	0.00	0.00	0.00
8,100.00	13.00	275.34	8,043.37	50.80	-543.80	15.71	0.00	0.00	0.00
8,200.00	13.00	275.34	8,140.81	52.90	-566.20	16.35	0.00	0.00	0.00
8,300.00	13.00	275.34	8,238.25	54.99	-588.60	17.00	0.00	0.00	0.00
8,400.00	13.00	275.34	8,335.68	57.08	-611.00	17.65	0.00	0.00	0.00
8,500.00	13.00	275.34	8,433.12	59.18	-633.40	18.29	0.00	0.00	0.00
8,600.00	13.00	275.34	8,530.56	61.27	-655.80	18.94	0.00	0.00	0.00
8,700.00	13.00	275.34	8,627.99	63.36	-678.20	19.59	0.00	0.00	0.00
8,800.00	13.00	275.34	8,725.43	65.45	-700.60	20.24	0.00	0.00	0.00
8,900.00	13.00	275.34	8,822.87	67.55	-723.00	20.88	0.00	0.00	0.00
9,000.00	13.00	275.34	8,920.30	69.64	-745.40	21.53	0.00	0.00	0.00
9,100.00	13.00	275.34	9,017.74	71.73	-767.80	22.18	0.00	0.00	0.00
9,200.00	13.00	275.34	9,115.18	73.82	-790.20	22.82	0.00	0.00	0.00
9,300.00	13.00	275.34	9,212.61	75.92	-812.60	23.47	0.00	0.00	0.00
9,400.00	13.00	275.34	9,310.05	78.01	-834.99	24.12	0.00	0.00	0.00
9,500.00	13.00	275.34	9,407.49	80.10	-857.39	24.76	0.00	0.00	0.00
9,600.00	13.00	275.34	9,504.92	82.19	-879.79	25.41	0.00	0.00	0.00
9,700.00	13.00	275.34	9,602.36	84.29	-902.19	26.06	0.00	0.00	0.00
9,800.00	13.00	275.34	9,699.80	86.38	-924.59	26.71	0.00	0.00	0.00
9,900.00	13.00	275.34	9,797.23	88.47	-946.99	27.35	0.00	0.00	0.00
10,000.00	13.00	275.34	9,894.67	90.57	-969.39	28.00	0.00	0.00	0.00
10,100.00	13.00	275.34	9,992.11	92.66	-991.79	28.65	0.00	0.00	0.00
10,200.00	13.00	275.34	10,089.54	94.75	-1,014.19	29.29	0.00	0.00	0.00
10,300.00	13.00	275.34	10,186.98	96.84	-1,036.59	29.94	0.00	0.00	0.00
10,400.00	13.00	275.34	10,284.42	98.94	-1,058.99	30.59	0.00	0.00	0.00
10,500.00	13.00	275.34	10,381.85	101.03	-1,081.39	31.23	0.00	0.00	0.00
10,600.00	13.00	275.34	10,479.29	103.12	-1,103.79	31.88	0.00	0.00	0.00
10,700.00	13.00	275.34	10,576.72	105.21	-1,126.19	32.53	0.00	0.00	0.00

# OXY

## Planning Report

<b>Database:</b>	HOPSPP	<b>Local Co-ordinate Reference:</b>	Well Saker 6_7 Fed Com 37H
<b>Company:</b>	ENGINEERING DESIGNS	<b>TVD Reference:</b>	RKB=26.5' @ 3476.60ft
<b>Project:</b>	PRD NM DIRECTIONAL PLANS (NAD 1983)	<b>MD Reference:</b>	RKB=26.5' @ 3476.60ft
<b>Site:</b>	Saker 6_7	<b>North Reference:</b>	Grid
<b>Well:</b>	Saker 6_7 Fed Com 37H	<b>Survey Calculation Method:</b>	Minimum Curvature
<b>Wellbore:</b>	Wellbore #1		
<b>Design:</b>	Permitting Plan		

Planned Survey									
Measured Depth (ft)	Inclination (°)	Azimuth (°)	Vertical Depth (ft)	+N/-S (ft)	+E/-W (ft)	Vertical Section (ft)	Dogleg Rate (°/100ft)	Build Rate (°/100ft)	Turn Rate (°/100ft)
10,800.00	13.00	275.34	10,674.16	107.31	-1,148.59	33.17	0.00	0.00	0.00
10,900.00	13.00	275.34	10,771.60	109.40	-1,170.99	33.82	0.00	0.00	0.00
11,000.00	13.00	275.34	10,869.03	111.49	-1,193.39	34.47	0.00	0.00	0.00
11,100.00	13.00	275.34	10,966.47	113.58	-1,215.79	35.12	0.00	0.00	0.00
11,200.00	13.00	275.34	11,063.91	115.68	-1,238.18	35.76	0.00	0.00	0.00
11,298.60	13.00	275.34	11,159.98	117.74	-1,260.27	36.40	0.00	0.00	0.00
11,300.00	12.99	274.72	11,161.34	117.77	-1,260.58	36.41	10.00	-1.03	-44.24
11,400.00	15.54	234.55	11,258.48	110.91	-1,282.75	45.92	10.00	2.55	-40.17
11,500.00	22.60	212.39	11,353.06	86.85	-1,304.01	72.38	10.00	7.06	-22.16
11,600.00	31.25	201.16	11,442.19	46.33	-1,323.72	115.00	10.00	8.65	-11.23
11,700.00	40.48	194.54	11,523.17	-9.43	-1,341.28	172.48	10.00	9.23	-6.62
11,800.00	49.97	190.06	11,593.54	-78.72	-1,356.15	243.06	10.00	9.49	-4.48
11,900.00	59.58	186.69	11,651.16	-159.45	-1,367.89	324.62	10.00	9.62	-3.37
12,000.00	69.27	183.93	11,694.28	-249.15	-1,376.13	414.66	10.00	9.69	-2.76
12,100.00	78.99	181.50	11,721.60	-345.11	-1,380.63	510.46	10.00	9.73	-2.42
12,194.17	88.17	179.36	11,732.11	-438.59	-1,381.32	603.32	10.00	9.74	-2.27
12,200.00	88.17	179.36	11,732.30	-444.41	-1,381.26	609.09	0.00	0.00	0.00
12,300.00	88.17	179.36	11,735.49	-544.35	-1,380.15	708.16	0.00	0.00	0.00
12,400.00	88.17	179.36	11,738.68	-644.30	-1,379.04	807.23	0.00	0.00	0.00
12,500.00	88.17	179.36	11,741.88	-744.24	-1,377.94	906.29	0.00	0.00	0.00
12,600.00	88.17	179.36	11,745.07	-844.18	-1,376.83	1,005.36	0.00	0.00	0.00
12,700.00	88.17	179.36	11,748.26	-944.12	-1,375.72	1,104.42	0.00	0.00	0.00
12,800.00	88.17	179.36	11,751.46	-1,044.07	-1,374.61	1,203.49	0.00	0.00	0.00
12,900.00	88.17	179.36	11,754.65	-1,144.01	-1,373.50	1,302.56	0.00	0.00	0.00
13,000.00	88.17	179.36	11,757.84	-1,243.95	-1,372.40	1,401.62	0.00	0.00	0.00
13,100.00	88.17	179.36	11,761.04	-1,343.90	-1,371.29	1,500.69	0.00	0.00	0.00
13,200.00	88.17	179.36	11,764.23	-1,443.84	-1,370.18	1,599.76	0.00	0.00	0.00
13,300.00	88.17	179.36	11,767.43	-1,543.78	-1,369.07	1,698.82	0.00	0.00	0.00
13,400.00	88.17	179.36	11,770.62	-1,643.72	-1,367.96	1,797.89	0.00	0.00	0.00
13,500.00	88.17	179.36	11,773.81	-1,743.67	-1,366.86	1,896.95	0.00	0.00	0.00
13,600.00	88.17	179.36	11,777.01	-1,843.61	-1,365.75	1,996.02	0.00	0.00	0.00
13,700.00	88.17	179.36	11,780.20	-1,943.55	-1,364.64	2,095.09	0.00	0.00	0.00
13,800.00	88.17	179.36	11,783.39	-2,043.50	-1,363.53	2,194.15	0.00	0.00	0.00
13,900.00	88.17	179.36	11,786.59	-2,143.44	-1,362.43	2,293.22	0.00	0.00	0.00
14,000.00	88.17	179.36	11,789.78	-2,243.38	-1,361.32	2,392.29	0.00	0.00	0.00
14,100.00	88.17	179.36	11,792.97	-2,343.32	-1,360.21	2,491.35	0.00	0.00	0.00
14,200.00	88.17	179.36	11,796.17	-2,443.27	-1,359.10	2,590.42	0.00	0.00	0.00
14,300.00	88.17	179.36	11,799.36	-2,543.21	-1,357.99	2,689.49	0.00	0.00	0.00
14,400.00	88.17	179.36	11,802.55	-2,643.15	-1,356.89	2,788.55	0.00	0.00	0.00
14,500.00	88.17	179.36	11,805.75	-2,743.10	-1,355.78	2,887.62	0.00	0.00	0.00
14,600.00	88.17	179.36	11,808.94	-2,843.04	-1,354.67	2,986.68	0.00	0.00	0.00
14,700.00	88.17	179.36	11,812.13	-2,942.98	-1,353.56	3,085.75	0.00	0.00	0.00
14,800.00	88.17	179.36	11,815.33	-3,042.92	-1,352.45	3,184.82	0.00	0.00	0.00
14,900.00	88.17	179.36	11,818.52	-3,142.87	-1,351.35	3,283.88	0.00	0.00	0.00
15,000.00	88.17	179.36	11,821.71	-3,242.81	-1,350.24	3,382.95	0.00	0.00	0.00
15,100.00	88.17	179.36	11,824.91	-3,342.75	-1,349.13	3,482.02	0.00	0.00	0.00
15,200.00	88.17	179.36	11,828.10	-3,442.70	-1,348.02	3,581.08	0.00	0.00	0.00
15,300.00	88.17	179.36	11,831.29	-3,542.64	-1,346.91	3,680.15	0.00	0.00	0.00
15,400.00	88.17	179.36	11,834.49	-3,642.58	-1,345.81	3,779.21	0.00	0.00	0.00
15,500.00	88.17	179.36	11,837.68	-3,742.52	-1,344.70	3,878.28	0.00	0.00	0.00
15,600.00	88.17	179.36	11,840.87	-3,842.47	-1,343.59	3,977.35	0.00	0.00	0.00
15,700.00	88.17	179.36	11,844.07	-3,942.41	-1,342.48	4,076.41	0.00	0.00	0.00
15,800.00	88.17	179.36	11,847.26	-4,042.35	-1,341.38	4,175.48	0.00	0.00	0.00
15,900.00	88.17	179.36	11,850.45	-4,142.30	-1,340.27	4,274.55	0.00	0.00	0.00
16,000.00	88.17	179.36	11,853.65	-4,242.24	-1,339.16	4,373.61	0.00	0.00	0.00

# OXY Planning Report

<b>Database:</b>	HOPSPP	<b>Local Co-ordinate Reference:</b>	Well Saker 6_7 Fed Com 37H
<b>Company:</b>	ENGINEERING DESIGNS	<b>TVD Reference:</b>	RKB=26.5' @ 3476.60ft
<b>Project:</b>	PRD NM DIRECTIONAL PLANS (NAD 1983)	<b>MD Reference:</b>	RKB=26.5' @ 3476.60ft
<b>Site:</b>	Saker 6_7	<b>North Reference:</b>	Grid
<b>Well:</b>	Saker 6_7 Fed Com 37H	<b>Survey Calculation Method:</b>	Minimum Curvature
<b>Wellbore:</b>	Wellbore #1		
<b>Design:</b>	Permitting Plan		

Planned Survey									
Measured Depth (ft)	Inclination (°)	Azimuth (°)	Vertical Depth (ft)	+N/-S (ft)	+E/-W (ft)	Vertical Section (ft)	Dogleg Rate (°/100ft)	Build Rate (°/100ft)	Turn Rate (°/100ft)
16,100.00	88.17	179.36	11,856.84	-4,342.18	-1,338.05	4,472.68	0.00	0.00	0.00
16,200.00	88.17	179.36	11,860.03	-4,442.12	-1,336.94	4,571.74	0.00	0.00	0.00
16,300.00	88.17	179.36	11,863.23	-4,542.07	-1,335.84	4,670.81	0.00	0.00	0.00
16,400.00	88.17	179.36	11,866.42	-4,642.01	-1,334.73	4,769.88	0.00	0.00	0.00
16,500.00	88.17	179.36	11,869.61	-4,741.95	-1,333.62	4,868.94	0.00	0.00	0.00
16,600.00	88.17	179.36	11,872.81	-4,841.90	-1,332.51	4,968.01	0.00	0.00	0.00
16,700.00	88.17	179.36	11,876.00	-4,941.84	-1,331.40	5,067.08	0.00	0.00	0.00
16,800.00	88.17	179.36	11,879.19	-5,041.78	-1,330.30	5,166.14	0.00	0.00	0.00
16,900.00	88.17	179.36	11,882.39	-5,141.72	-1,329.19	5,265.21	0.00	0.00	0.00
17,000.00	88.17	179.36	11,885.58	-5,241.67	-1,328.08	5,364.27	0.00	0.00	0.00
17,100.00	88.17	179.36	11,888.77	-5,341.61	-1,326.97	5,463.34	0.00	0.00	0.00
17,200.00	88.17	179.36	11,891.97	-5,441.55	-1,325.86	5,562.41	0.00	0.00	0.00
17,300.00	88.17	179.36	11,895.16	-5,541.50	-1,324.76	5,661.47	0.00	0.00	0.00
17,400.00	88.17	179.36	11,898.35	-5,641.44	-1,323.65	5,760.54	0.00	0.00	0.00
17,500.00	88.17	179.36	11,901.55	-5,741.38	-1,322.54	5,859.61	0.00	0.00	0.00
17,600.00	88.17	179.36	11,904.74	-5,841.32	-1,321.43	5,958.67	0.00	0.00	0.00
17,700.00	88.17	179.36	11,907.94	-5,941.27	-1,320.33	6,057.74	0.00	0.00	0.00
17,800.00	88.17	179.36	11,911.13	-6,041.21	-1,319.22	6,156.81	0.00	0.00	0.00
17,900.00	88.17	179.36	11,914.32	-6,141.15	-1,318.11	6,255.87	0.00	0.00	0.00
18,000.00	88.17	179.36	11,917.52	-6,241.10	-1,317.00	6,354.94	0.00	0.00	0.00
18,100.00	88.17	179.36	11,920.71	-6,341.04	-1,315.89	6,454.00	0.00	0.00	0.00
18,200.00	88.17	179.36	11,923.90	-6,440.98	-1,314.79	6,553.07	0.00	0.00	0.00
18,300.00	88.17	179.36	11,927.10	-6,540.92	-1,313.68	6,652.14	0.00	0.00	0.00
18,400.00	88.17	179.36	11,930.29	-6,640.87	-1,312.57	6,751.20	0.00	0.00	0.00
18,500.00	88.17	179.36	11,933.48	-6,740.81	-1,311.46	6,850.27	0.00	0.00	0.00
18,600.00	88.17	179.36	11,936.68	-6,840.75	-1,310.35	6,949.34	0.00	0.00	0.00
18,700.00	88.17	179.36	11,939.87	-6,940.70	-1,309.25	7,048.40	0.00	0.00	0.00
18,800.00	88.17	179.36	11,943.06	-7,040.64	-1,308.14	7,147.47	0.00	0.00	0.00
18,900.00	88.17	179.36	11,946.26	-7,140.58	-1,307.03	7,246.53	0.00	0.00	0.00
19,000.00	88.17	179.36	11,949.45	-7,240.52	-1,305.92	7,345.60	0.00	0.00	0.00
19,100.00	88.17	179.36	11,952.64	-7,340.47	-1,304.81	7,444.67	0.00	0.00	0.00
19,200.00	88.17	179.36	11,955.84	-7,440.41	-1,303.71	7,543.73	0.00	0.00	0.00
19,300.00	88.17	179.36	11,959.03	-7,540.35	-1,302.60	7,642.80	0.00	0.00	0.00
19,400.00	88.17	179.36	11,962.22	-7,640.30	-1,301.49	7,741.87	0.00	0.00	0.00
19,500.00	88.17	179.36	11,965.42	-7,740.24	-1,300.38	7,840.93	0.00	0.00	0.00
19,600.00	88.17	179.36	11,968.61	-7,840.18	-1,299.28	7,940.00	0.00	0.00	0.00
19,700.00	88.17	179.36	11,971.80	-7,940.12	-1,298.17	8,039.06	0.00	0.00	0.00
19,800.00	88.17	179.36	11,975.00	-8,040.07	-1,297.06	8,138.13	0.00	0.00	0.00
19,900.00	88.17	179.36	11,978.19	-8,140.01	-1,295.95	8,237.20	0.00	0.00	0.00
20,000.00	88.17	179.36	11,981.38	-8,239.95	-1,294.84	8,336.26	0.00	0.00	0.00
20,100.00	88.17	179.36	11,984.58	-8,339.90	-1,293.74	8,435.33	0.00	0.00	0.00
20,200.00	88.17	179.36	11,987.77	-8,439.84	-1,292.63	8,534.40	0.00	0.00	0.00
20,300.00	88.17	179.36	11,990.96	-8,539.78	-1,291.52	8,633.46	0.00	0.00	0.00
20,400.00	88.17	179.36	11,994.16	-8,639.72	-1,290.41	8,732.53	0.00	0.00	0.00
20,500.00	88.17	179.36	11,997.35	-8,739.67	-1,289.30	8,831.59	0.00	0.00	0.00
20,600.00	88.17	179.36	12,000.54	-8,839.61	-1,288.20	8,930.66	0.00	0.00	0.00
20,700.00	88.17	179.36	12,003.74	-8,939.55	-1,287.09	9,029.73	0.00	0.00	0.00
20,800.00	88.17	179.36	12,006.93	-9,039.50	-1,285.98	9,128.79	0.00	0.00	0.00
20,900.00	88.17	179.36	12,010.12	-9,139.44	-1,284.87	9,227.86	0.00	0.00	0.00
21,000.00	88.17	179.36	12,013.32	-9,239.38	-1,283.76	9,326.93	0.00	0.00	0.00
21,100.00	88.17	179.36	12,016.51	-9,339.32	-1,282.66	9,425.99	0.00	0.00	0.00
21,200.00	88.17	179.36	12,019.70	-9,439.27	-1,281.55	9,525.06	0.00	0.00	0.00
21,300.00	88.17	179.36	12,022.90	-9,539.21	-1,280.44	9,624.13	0.00	0.00	0.00
21,400.00	88.17	179.36	12,026.09	-9,639.15	-1,279.33	9,723.19	0.00	0.00	0.00
21,500.00	88.17	179.36	12,029.28	-9,739.10	-1,278.23	9,822.26	0.00	0.00	0.00

OXY  
Planning Report

Database:	HOPSPP	Local Co-ordinate Reference:	Well Saker 6_7 Fed Com 37H
Company:	ENGINEERING DESIGNS	TVD Reference:	RKB=26.5' @ 3476.60ft
Project:	PRD NM DIRECTIONAL PLANS (NAD 1983)	MD Reference:	RKB=26.5' @ 3476.60ft
Site:	Saker 6_7	North Reference:	Grid
Well:	Saker 6_7 Fed Com 37H	Survey Calculation Method:	Minimum Curvature
Wellbore:	Wellbore #1		
Design:	Permitting Plan		

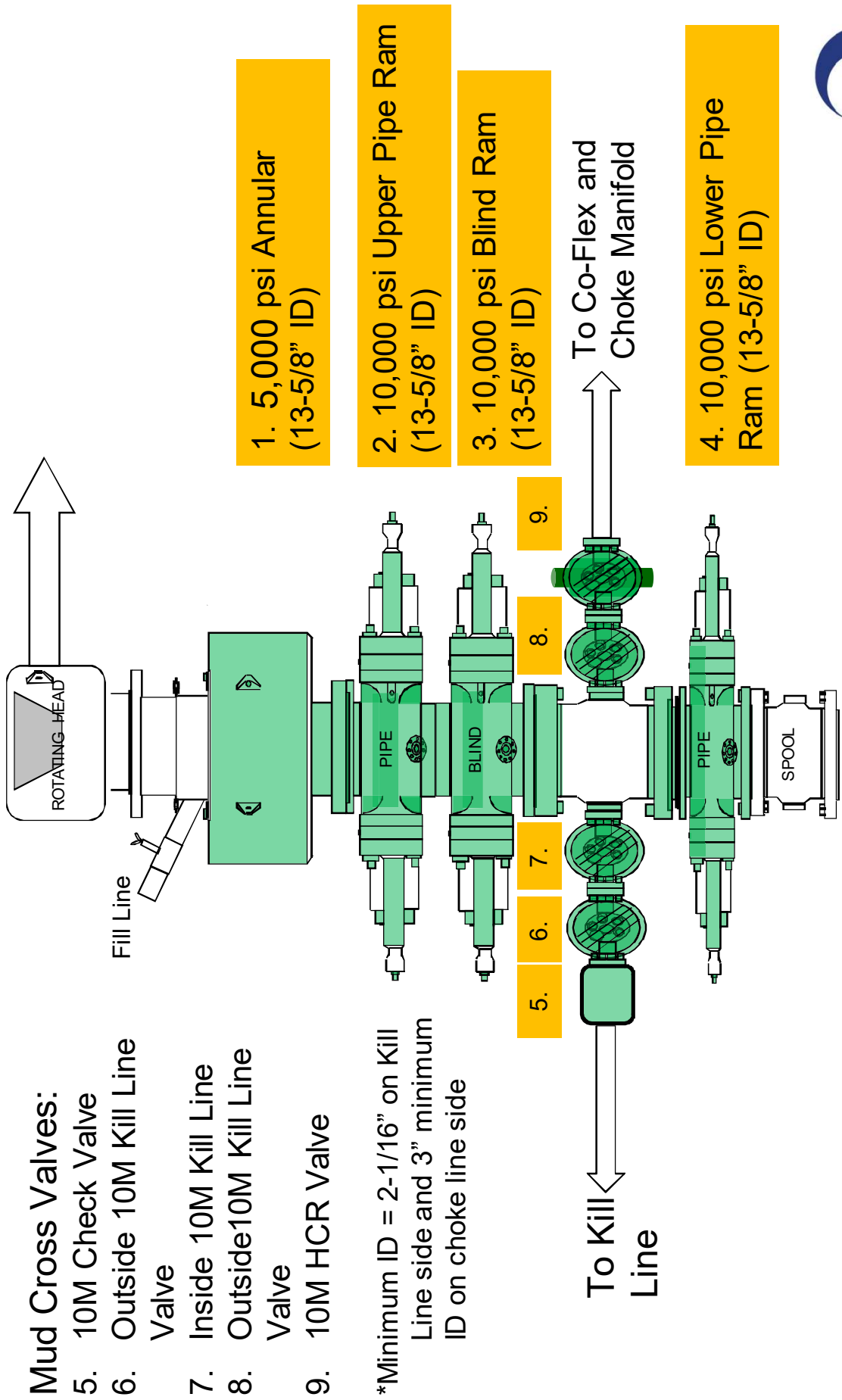
Planned Survey									
Measured Depth (ft)	Inclination (°)	Azimuth (°)	Vertical Depth (ft)	+N/-S (ft)	+E/-W (ft)	Vertical Section (ft)	Dogleg Rate (°/100ft)	Build Rate (°/100ft)	Turn Rate (°/100ft)
21,600.00	88.17	179.36	12,032.48	-9,839.04	-1,277.12	9,921.32	0.00	0.00	0.00
21,700.00	88.17	179.36	12,035.67	-9,938.98	-1,276.01	10,020.39	0.00	0.00	0.00
21,800.00	88.17	179.36	12,038.86	-10,038.92	-1,274.90	10,119.46	0.00	0.00	0.00
21,900.00	88.17	179.36	12,042.06	-10,138.87	-1,273.79	10,218.52	0.00	0.00	0.00
22,000.00	88.17	179.36	12,045.25	-10,238.81	-1,272.69	10,317.59	0.00	0.00	0.00
22,100.00	88.17	179.36	12,048.45	-10,338.75	-1,271.58	10,416.66	0.00	0.00	0.00
22,136.18	88.17	179.36	12,049.60	-10,374.91	-1,271.18	10,452.49	0.00	0.00	0.00

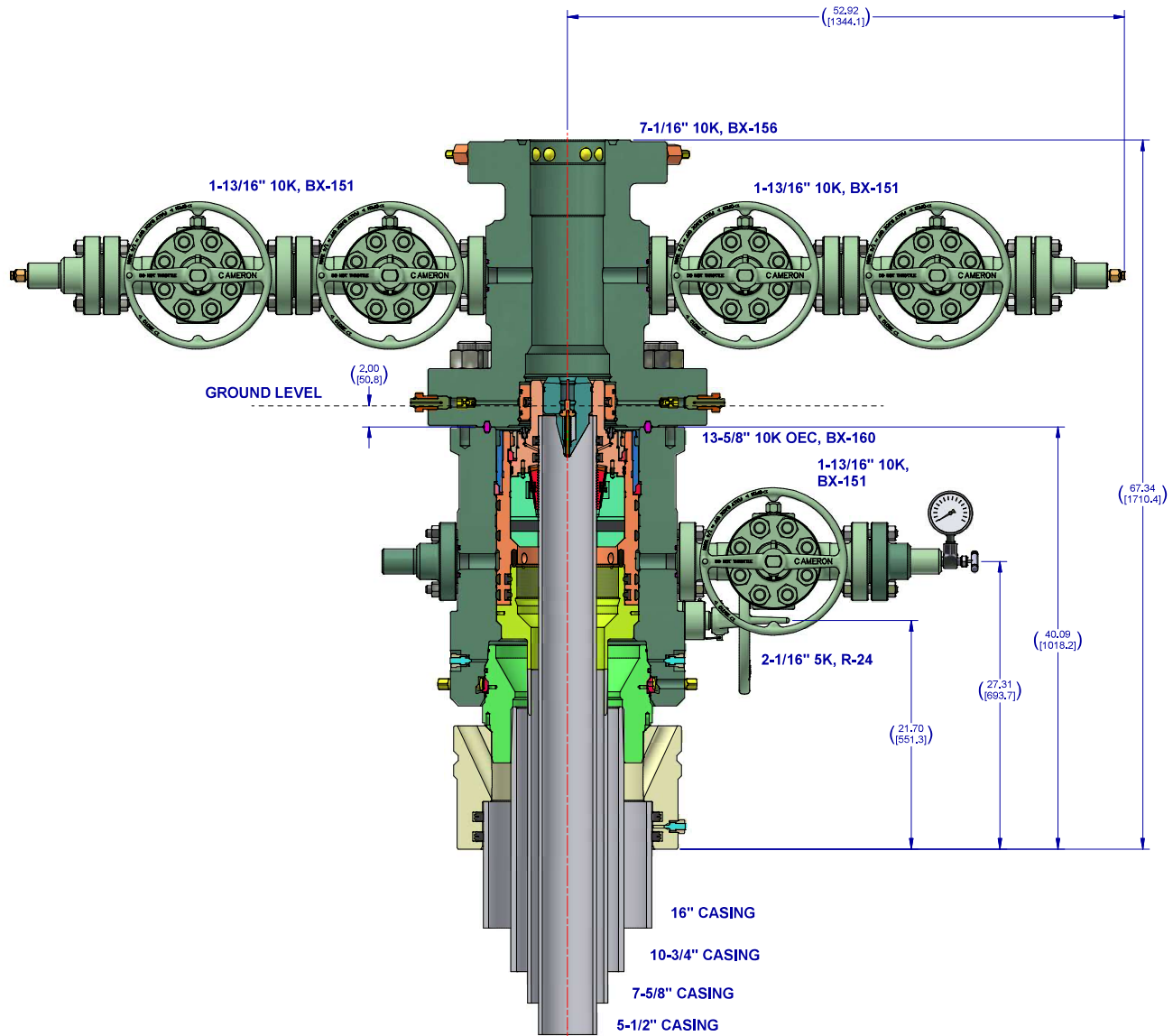
Design Targets									
Target Name	Dip Angle (°)	Dip Dir. (°)	TVD (ft)	+N/-S (ft)	+E/-W (ft)	Northing (usft)	Easting (usft)	Latitude	Longitude
- hit/miss target									
- Shape									
FTP (Saker 6_7 Fed	0.00	0.00	11,731.60	66.88	-1,386.93	457,210.69	828,133.74	32.253541	-103.405604
- plan misses target center by 203.00ft at 11800.00ft MD (11593.54 TVD, -78.72 N, -1356.15 E)									
- Point									
PBHL (Saker 6_7 Fed	0.00	0.00	12,049.60	-10,374.91	-1,271.18	446,768.88	828,249.49	32.224839	-103.405522
- plan hits target center									
- Point									

Formations					
Measured Depth (ft)	Vertical Depth (ft)	Name	Lithology	Dip (°)	Dip Direction (°)
796.60	796.60	RUSTLER			
1,057.60	1,057.60	SALADO			
3,385.60	3,385.60	CASTILE			
5,253.66	5,253.60	DELAWARE			
5,303.71	5,303.60	BELL CANYON			
6,199.81	6,191.60	CHERRY CANYON			
7,600.42	7,556.60	BRUSHY CANYON			
8,816.60	8,741.60	BONE SPRING			
9,980.43	9,875.60	BONE SPRING 1ST			
10,441.24	10,324.60	BONE SPRING 2ND			
11,491.94	11,345.60	BONE SPRING 3RD			
11,893.04	11,647.60	WOLFCAMP			

Plan Annotations				
Measured Depth (ft)	Vertical Depth (ft)	Local Coordinates		Comment
		+N/-S (ft)	+E/-W (ft)	
5,025.00	5,025.00	0.00	0.00	Build 1°/100'
6,325.11	6,313.98	13.66	-146.24	Hold 13° Tangent
11,298.60	11,159.98	117.74	-1,260.27	KOP, Build & Turn 10°/100'
12,194.17	11,732.11	-438.59	-1,381.32	Landing Point
22,136.18	12,049.60	-10,374.91	-1,271.18	TD at 22136.17' MD


# 5/10M BOP Stack



**Notes:**

1. THIS IS A PROPOSAL DRAWING AND DIMENSIONS SHOWN ARE SUBJECT TO CHANGE DURING THE FINAL DESIGN PROCESS.

2. DIGITALLY ENABLED SOLUTIONS, CHOKES AND ESD'S AVAILABLE ON REQUEST

CONFIDENTIAL					
SURFACE TREATMENT		DO NOT SCALE		 <b>CAMERON</b> A Schlumberger Company	SURFACE SYSTEMS
DRAWN BY		D. GOTTUNG	DATE 2 Dec 21		
CHECKED BY		D. GOTTUNG	DATE 2 Dec 21		
APPROVED BY		D. GOTTUNG	DATE 2 Dec 21		
MATERIAL & HEAT TREAT		OXY 13-5/8" 10K ADAPT 16" X 10-3/4" X 7-5/8" X 5-1/2"			
ESTIMATED WEIGHT:		6515.617 LBS 2955.434 KG		INTERNAL USE BOM	
		SHEET 4 of 4		SD-053434-94-05	
				REV: 01	

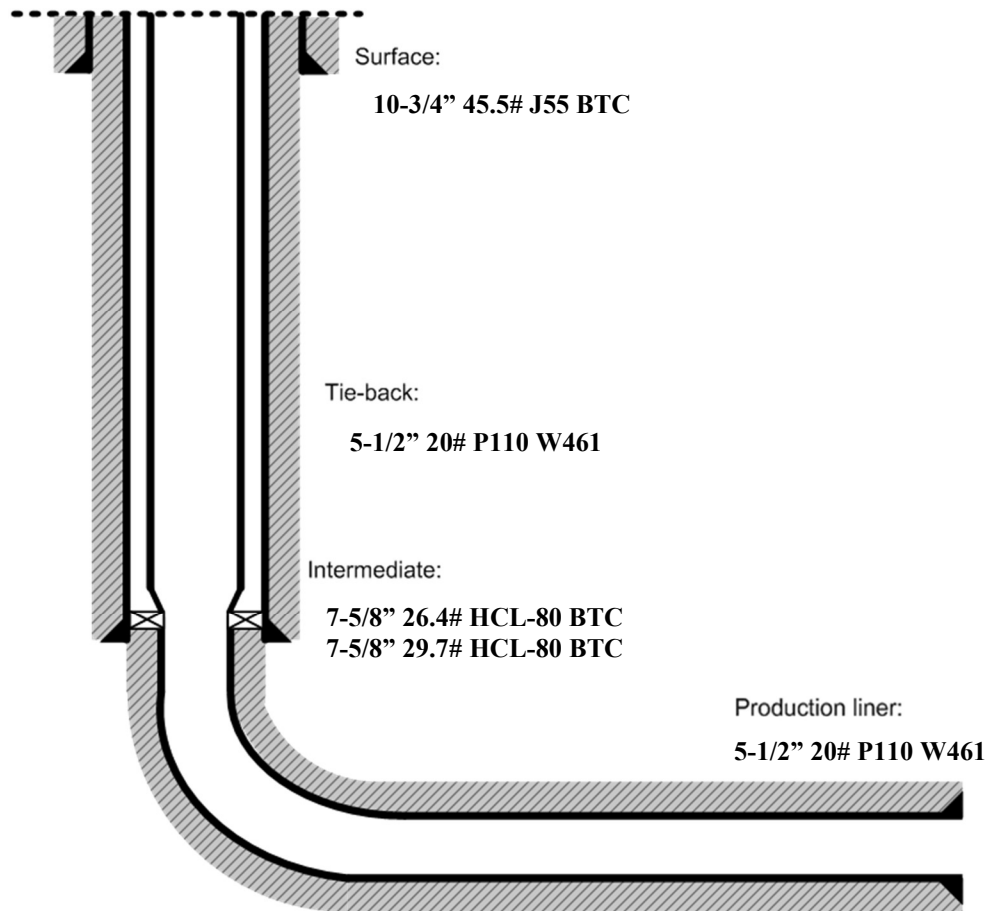
## OXY USA WTP LP

### Standard SL1 Tieback Details

Below is a summary that describes the general operational steps to drill and complete the well.

- Drill 14-3/4" hole x 10-3/4" casing for surface section. Cement to surface.
- Drill 9-7/8" hole x 7-5/8" casing for intermediate section. Cement to surface.
- Drill 6-3/4" hole x 5-1/2" liner for production section. Cement to top of liner, 100' inside 7-5/8" shoe.
- Release drilling rig from location.
- Move in workover rig and run a 5-1/2" 20# P110 Wedge 461 tie-back frac string and seal assembly. Tie into liner hanger Polished Bore Receptacle (PBR) with seal assembly.
- Pump hydraulic fracture job.
- Flowback and produce well.

General well schematic:







5.500" 20.00 lb/ft P110-CY

TenarisHydril Wedge 461™ Matched Strength



Special Data Sheet

TH DS-20.0359

12 August 2020

Rev 00

Nominal OD	5.500 in.	Wall Thickness	0.361 in.	Grade	P110-CY
Min Wall Thickness	87.5%	Type	CASING	Connection OD Option	MATCHED STRENGTH

Pipe Body Data

Geometry			Performance		
Nominal OD	5.500 in.	Nominal ID	4.778 in.	Body Yield Strength	641 x 1000 lbs
Nominal Weight	20.00 lbs/ft	Wall Thickness	0.361 in.	Internal Yield	12640 psi
Standard Drift Diameter	4.653 in.	Plain End Weight	19.83 lbs/ft	SMYS	110000 psi
Special Drift Diameter	N/A	OD Tolerance	API	Collapse Pressure	11110 psi

Connection Data

Geometry		Performance		Make-up Torques	
Matched Strength OD	6.050 in.	Tension Efficiency	100%	Minimum	17000 ft-lbs
Make-up Loss	3.775 in.	Joint Yield Strength	641 x 1000 lbs	Optimum	18000 ft-lbs
Threads per in.	3.40	Internal Yield	12640 psi	Maximum	21600 ft-lbs
Connection OD Option	MATCHED STRENGTH	Compression Efficiency	100%	Operational Limit Torques	
Coupling Length	7.714 in.	Compression Strength	641 x 1000 lbs	Operating Torque	32000 ft-lbs
		Bending	92 °/100 ft	Yield Torque	38000 ft-lbs
		Collapse	11110 psi	Buck-On Torques	
				Minimum	21600 ft-lbs
				Maximum	23100 ft-lbs

Notes

\*If you need to use torque values that are higher than the maximum indicated, please contact a local Tenaris technical sales representative



# TenarisHydril Wedge 425®



Coupling	Pipe Body
Grade: P110-CY	Grade: P110-CY
Body: White	1st Band: White
1st Band: Grey	2nd Band: Grey
2nd Band: -	3rd Band: -
3rd Band: -	4th Band: -
	5th Band: -
	6th Band: -

Outside Diameter	5.500 in.	Wall Thickness	0.361 in.	Grade	P110-CY
Min. Wall Thickness	87.50 %	Pipe Body Drift	API Standard	Type	Casing
Connection OD Option	REGULAR				

## Pipe Body Data

Geometry				Performance	
Nominal OD	5.500 in.	Wall Thickness	0.361 in.	Body Yield Strength	641 x1000 lb
Nominal Weight	20 lb/ft	Plain End Weight	19.83 lb/ft	Min. Internal Yield Pressure	12,640 psi
Drift	4.653 in.	OD Tolerance	API	SMYS	110,000 psi
Nominal ID	4.778 in.			Collapse Pressure	11,100 psi

## Connection Data

Geometry		Performance		Make-Up Torques	
Connection OD	5.777 in.	Tension Efficiency	90 %	Minimum	15,700 ft-lb
Connection ID	4.734 in.	Joint Yield Strength	577 x1000 lb	Optimum	19,600 ft-lb
Make-up Loss	5.823 in.	Internal Pressure Capacity	12,640 psi	Maximum	21,600 ft-lb
Threads per inch	3.77	Compression Efficiency	90 %	Operation Limit Torques	
Connection OD Option	Regular	Compression Strength	577 x1000 lb	Operating Torque	29,000 ft-lb
		Max. Allowable Bending	82 °/100 ft	Yield Torque	36,000 ft-lb
		External Pressure Capacity	11,100 psi		

## Notes

This connection is fully interchangeable with:  
TORQ® SFW™ - 5.5 in. - 0.361 in.  
Connections with Dopeless® Technology are fully compatible with the same connection in its Standard version

For the latest performance data, always visit our website: [www.tenaris.com](http://www.tenaris.com)

Tenaris has issued this document for general information only, and the information in this document, including, without limitation, any pictures, drawings or designs ("Information") is not intended to constitute professional or any other type of advice or recommendation and is provided on an "as is" basis. No warranty is given. Tenaris has not independently verified any information –if any- provided by the user in connection with, or for the purpose of, the Information contained hereunder. The use of the Information is at user's own risk and Tenaris does not assume any responsibility or liability of any kind for any loss, damage or injury resulting from, or in connection with any Information contained hereunder or any use thereof. The Information in this document is subject to change or modification without notice. Tenaris's products and services are subject to Tenaris's standard terms and conditions or otherwise to the terms resulting from the respective contracts of sale or services, as the case may be, between petitioner and Tenaris. For more complete information please contact a Tenaris's representative or visit our website at [www.tenaris.com](http://www.tenaris.com) . ©Tenaris 2021. All rights reserved.



# TenarisHydril Wedge 441®



Coupling	Pipe Body
Grade: P110-CY	Grade: P110-CY
Body: White	1st Band: White
1st Band: Grey	2nd Band: Grey
2nd Band: -	3rd Band: -
3rd Band: -	4th Band: -
	5th Band: -
	6th Band: -

Outside Diameter	5.500 in.	Wall Thickness	0.361 in.	Grade	P110-CY
Min. Wall Thickness	87.50 %	Drift	API Standard	Type	Casing
Connection OD Option	REGULAR				

## Pipe Body Data

Geometry				Performance	
Nominal OD	5.500 in.	Wall Thickness	0.361 in.	Body Yield Strength	641 x1000 lb
Nominal Weight	20 lb/ft	Plain End Weight	19.83 lb/ft	Min. Internal Yield Pressure	12,640 psi
Drift	4.653 in.	OD Tolerance	API	SMYS	110,000 psi
Nominal ID	4.778 in.			Collapse Pressure	11,100 psi

## Connection Data

Geometry		Performance		Make-Up Torques	
Connection OD	5.852 in.	Tension Efficiency	81.50 %	Minimum	15,000 ft-lb
Coupling Length	8.714 in.	Joint Yield Strength	522 x1000 lb	Optimum	16,000 ft-lb
Connection ID	4.778 in.	Internal Pressure Capacity	12,640 psi	Maximum	19,200 ft-lb
Make-up Loss	3.780 in.	Compression Efficiency	81.50 %	Operation Limit Torques	
Threads per inch	3.40	Compression Strength	522 x1000 lb	Operating Torque	32,000 ft-lb
Connection OD Option	Regular	Max. Allowable Bending	71 °/100 ft	Yield Torque	38,000 ft-lb
		External Pressure Capacity	11,100 psi	Buck-On	
				Minimum	19,200 ft-lb
				Maximum	20,700 ft-lb

## Notes

This connection is fully interchangeable with:  
Wedge 441® - 5.5 in. - 0.304 in.  
Connections with Dopeless® Technology are fully compatible with the same connection in its Standard version

For the latest performance data, always visit our website: [www.tenaris.com](http://www.tenaris.com)

Tenaris has issued this document for general information only, and the information in this document, including, without limitation, any pictures, drawings or designs ("Information") is not intended to constitute professional or any other type of advice or recommendation and is provided on an "as is" basis. No warranty is given. Tenaris has not independently verified any information –if any- provided by the user in connection with, or for the purpose of, the Information contained hereunder. The use of the Information is at user's own risk and Tenaris does not assume any responsibility or liability of any kind for any loss, damage or injury resulting from, or in connection with any Information contained hereunder or any use thereof. The Information in this document is subject to change or modification without notice. Tenaris's products and services are subject to Tenaris's standard terms and conditions or otherwise to the terms resulting from the respective contracts of sale or services, as the case may be, between petitioner and Tenaris. For more complete information please contact a Tenaris's representative or visit our website at [www.tenaris.com](http://www.tenaris.com) . ©Tenaris 2021. All rights reserved.

**District I**  
1625 N. French Dr., Hobbs, NM 88240  
Phone:(575) 393-6161 Fax:(575) 393-0720  
**District II**  
811 S. First St., Artesia, NM 88210  
Phone:(575) 748-1283 Fax:(575) 748-9720  
**District III**  
1000 Rio Brazos Rd., Aztec, NM 87410  
Phone:(505) 334-6178 Fax:(505) 334-6170  
**District IV**  
1220 S. St Francis Dr., Santa Fe, NM 87505  
Phone:(505) 476-3470 Fax:(505) 476-3462

State of New Mexico  
Energy, Minerals and Natural Resources  
Oil Conservation Division  
1220 S. St Francis Dr.  
Santa Fe, NM 87505

CONDITIONS  
  
Action 204889

CONDITIONS

Operator: OXY USA INC P.O. Box 4294 Houston, TX 772104294	OGRID: 16696
	Action Number: 204889
	Action Type: [C-103] NOI Change of Plans (C-103A)

CONDITIONS

Created By	Condition	Condition Date
pkautz	None	5/4/2023