

Well Name: PINON MESA A	Well Location: T31N / R14W / SEC 35 / NWNE /	County or Parish/State: SAN JUAN / NM
Well Number: 3	Type of Well: CONVENTIONAL GAS WELL	Allottee or Tribe Name: UTE MOUNTAIN UTE
Lease Number: MOOC14200626	Unit or CA Name:	Unit or CA Number:
US Well Number: 3004523286	Well Status: Producing Gas Well	Operator: HILCORP ENERGY COMPANY

Notice of Intent

Sundry ID: 2725185

Type of Submission: Notice of Intent	Type of Action: Plug and Abandonment
Date Sundry Submitted: 04/11/2023	Time Sundry Submitted: 11:22
Date proposed operation will begin: 06/01/2023	

Procedure Description: Hilcorp Energy Company requests permission to P&A the subject well per the attached procedures, current and proposed wellbore schematics. A closed loop system will be used.

Surface Disturbance

Is any additional surface disturbance proposed?: No

NOI Attachments

Procedure Description

Pinion_Mesa_A_3_P_A_NOI_20230411112203.pdf

Accepted for record – NMOCD	
JRH	05/15/2023

Well Name: PINON MESA A	Well Location: T31N / R14W / SEC 35 / NWNE /	County or Parish/State: SAN JUAN / NM
Well Number: 3	Type of Well: CONVENTIONAL GAS WELL	Allottee or Tribe Name: UTE MOUNTAIN UTE
Lease Number: MOOC14200626	Unit or CA Name:	Unit or CA Number:
US Well Number: 3004523286	Well Status: Producing Gas Well	Operator: HILCORP ENERGY COMPANY

Conditions of Approval

Specialist Review

COA_pa_Pinion_Mesa_A_3_Sundry_ID_2725185_20230412153913.pdf

Operator

I certify that the foregoing is true and correct. Title 18 U.S.C. Section 1001 and Title 43 U.S.C. Section 1212, make it a crime for any person knowingly and willfully to make to any department or agency of the United States any false, fictitious or fraudulent statements or representations as to any matter within its jurisdiction. Electronic submission of Sundry Notices through this system satisfies regulations requiring a

Operator Electronic Signature: KANDIS ROLAND	Signed on: APR 11, 2023 11:22 AM
Name: HILCORP ENERGY COMPANY	
Title: Operation Regulatory Tech	
Street Address: 382 Road 3100	
City: Farmington	State: NM
Phone: (505) 599-3400	
Email address: kroland@hilcorp.com	

Field

Representative Name:		
Street Address:		
City:	State:	Zip:
Phone:		
Email address:		

BLM Point of Contact

BLM POC Name: DEREK J PADILLA	BLM POC Title: ACTING FIELD MANAGER
BLM POC Phone: 9708821150	BLM POC Email Address: DPADILLA@BLM.GOV
Disposition: Approved	Disposition Date: 04/21/2023
Signature: Derek Padilla dpadilla@blm.gov	



HILCORP ENERGY COMPANY
Pinion Mesa A 3
NOTICE OF INTENT TO PERMANENTLY ABANDON

API #:	3004523286
---------------	------------

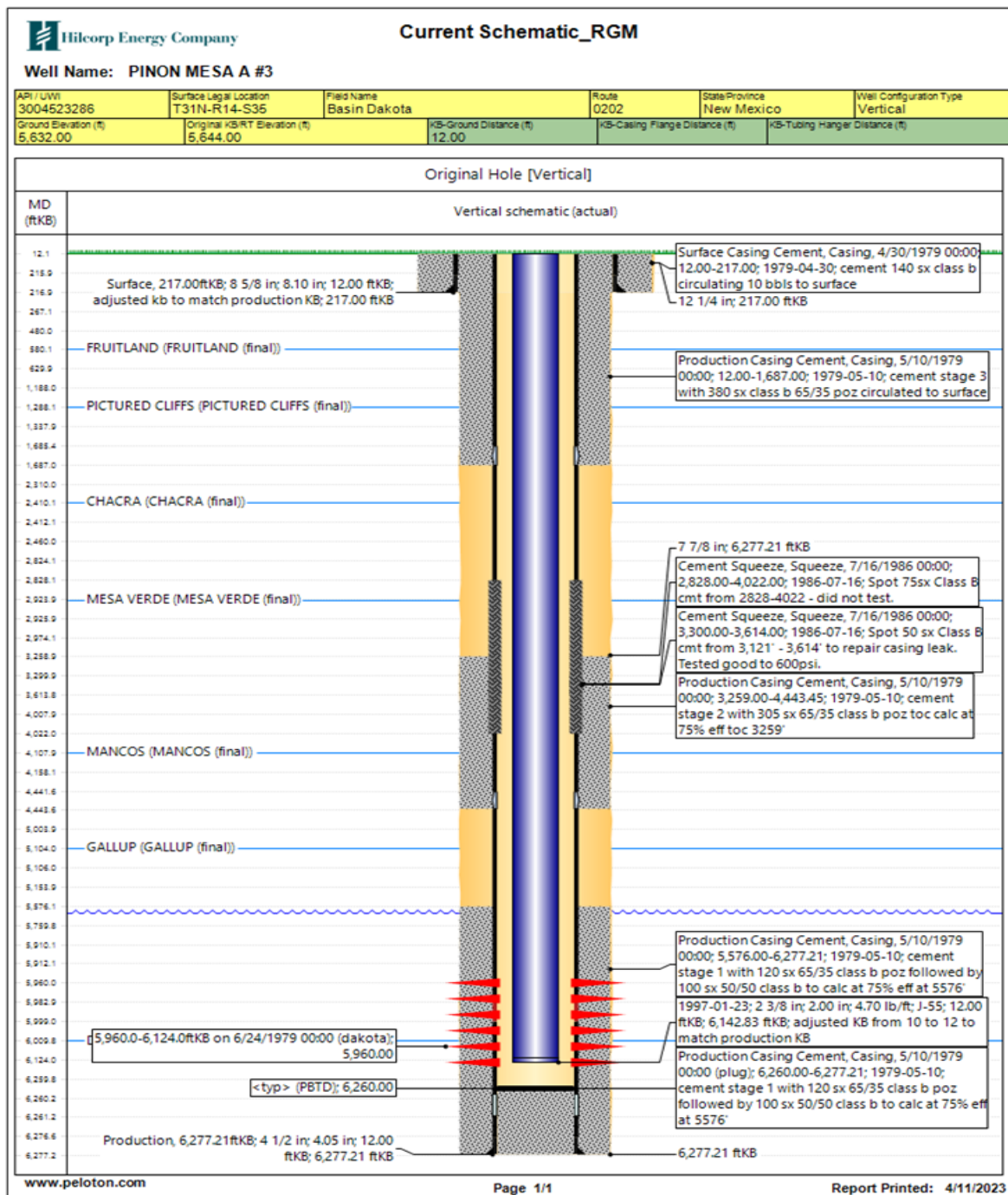
JOB PROCEDURES

- | | | |
|-------------------------------------|-------|--|
| <input checked="" type="checkbox"/> | NMOCD | Contact OCD and BLM (where applicable) 24 hrs prior to MIRU. Comply with all NMOCD, BLM (where applicable), and HEC |
| <input checked="" type="checkbox"/> | BLM | safety and environmental regulations. |
1. MIRU service rig and associated equipment, record all pressures on wellbore.
 2. Load well, ND tree, NU BOPs and test.
 3. POOH w/ 2-3/8" 4.7# EUE J55 tbg set at 6,143'.
 4. MU 4-1/2" 10.5# bit/scrapper, clear csg to 5,920', POOH. RIH w/ 4-1/2" 10.5# CICR on pipe and set @ 5,910' (DK/GRN Top Perf @ 5,960').
 5. Load well with inhibited brine & circulate clean. Pressure test the csg to 560 psi. Monitor for 30 minutes. **Run CBL from 5,910' to surface.**
All of the following plug designs are subject to change pending CBL results.
 6. RIH w/ WS to 5,910', tag CICR in place.
 7. **Plug #1 | 5,760' - 5,910' (CICR @ 5,910' | Dakota Top Perf: 5,960')** Pump 10sx (2.4bbl) Class III "Select" cement and spot a 150' inside plug over the CICR.
Note: Class III "Select" cement has the following specs: Yield = 1.37 cuft/sx | Weight = 14.6 ppg | Mix Water = 6.64 gal/sx
 8. RU ELU, perf circ holes in the 4-1/2" csg @ 5,154'. Establish injection into annulus. Set CICR on pipe @ 5,104'.
Plug #2 | 5,004' - 5,154' (Gallup Top @ 5,104') Pump 44sx (10.7 bbl) Class III "Select" cement [37sx, 9 bbl cmt below CICR]
 Circulate in & spot a 150' inside/outside plug over the Gallup Top.
 9. **Plug #3 | 4,008' - 4,158' (Mancos Top @ 4,108')** Pump 10sx (2.4bbl) Class III "Select" cement and spot a 150' inside plug over the Mancos Top.
 10. RU ELU, perf circ holes in the 4-1/2" csg @ 2,974'. Establish injection into annulus. Set CICR on pipe @ 2,924'.
Plug #4 | 2,824' - 2,974' (Cliff House Top @ 2,924') Pump 44sx (10.7 bbl) Class III "Select" cement [37sx, 9 bbl cmt below CICR]
 Circulate in & spot a 150' inside/outside plug over the Gallup Top.
 11. RU ELU, perf circ holes in the 4-1/2" csg @ 2,460'. Establish injection into annulus. Set CICR @ 2,412'.
Plug #5 | 2,310' - 2,460' (Chacra Top @ 2,410') Pump 44sx (10.7 bbl) Class III "Select" cement [37sx, 9 bbl cmt below CICR]
 Circulate in & spot a 150' inside/outside plug over the Gallup Top.
 12. **Plug #6 | 1,188' - 1,338' (Pictured Cliffs Top @ 1,288')** Pump 10sx (2.4bbl) Class III "Select" cement and spot a 150' inside plug over the Pictured Cliffs Top.
 13. **Plug #7 | 480' - 630' (Fruitland Top @ 580')** Pump 10sx (2.4bbl) Class III "Select" cement and spot a 150' inside plug over the Fruitland Top.
 14. **Plug #8 | 10' - 267' (Surface Shoe @ 217')** Pump 17sx (4.1 bbl) Class III "Select" cement and spot 205' inside plug to cover the surface shoe to surface.
 15. LD tubing. ND BOP and cut off wellhead below surface casing flange as per NMOCD. Top off cement at surface as needed. Weld new P&A maker.
 16. *Note: Class III "Select" cement has the following specs: Yield = 1.37 cuft/sx | Weight = 14.6 ppg | Mix Water = 6.64 gal/sx*



HILCORP ENERGY COMPANY
Pinion Mesa A 3
NOTICE OF INTENT TO PERMANENTLY ABANDON

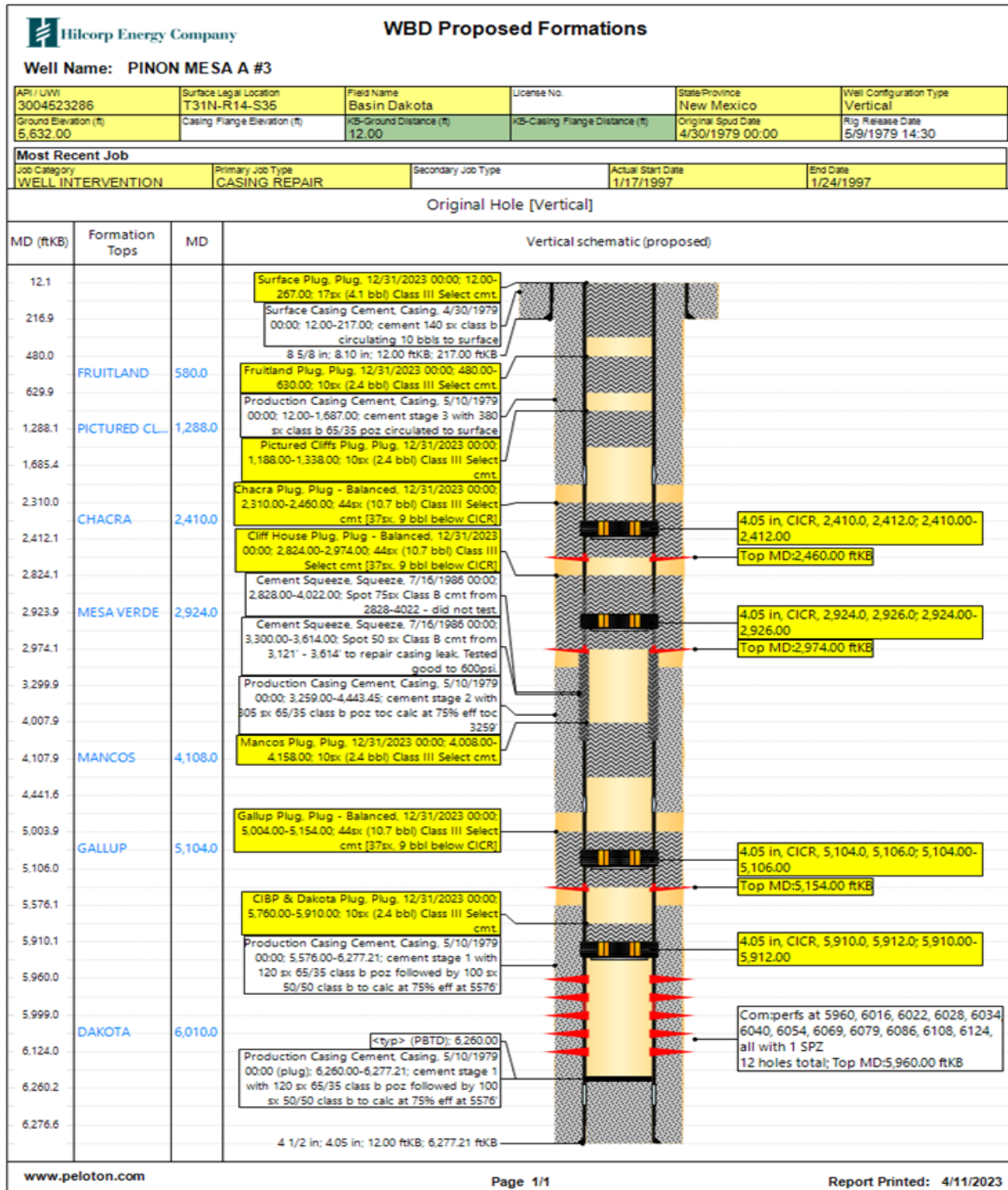
Pinion Mesa A 3 - CURRENT WELLBORE SCHEMATIC





HILCORP ENERGY COMPANY
Pinion Mesa A 3
NOTICE OF INTENT TO PERMANENTLY ABANDON

Pinion Mesa A 3 - PROPOSED P&A SCHEMATIC



**UNITED STATES DEPARTMENT OF THE INTERIOR
BUREAU OF LAND MANAGEMENT
Tres Rios Field Office
161 Burnett Drive Unit #4
Durango, Colorado 81301**

Attachment to Notice of Intention to Abandon:

Pinion Mesa A 3
US Well Number: 3004523286
Well Location: NWNE 35 31N 14W
San Juan COUNTY, NM
Sundry ID: 2725185

CONDITIONS OF APPROVAL

1. BLM to be notified 48 hours prior to start of plugging operations during normal business hours (8:00 am to 4:30pm).
2. Fluid between plugs will be at least 8.3 lb/gal and corrosion inhibited.
3. Share cement bond log results and casing test results with BLM Engineering, Joe Killins (jkillins@blm.gov) Cell: 970-759-8988.
4. Third party contractors are to be aware of the conditions of approval and adhere to them.
5. No changes are to be made to this approved Sundry without prior approval from the BLM.
6. A Subsequent Report must be submitted within 30 days after plugging operations are complete.

Reclamation Procedures:

This approval is for the completion of the downhole plugging operation only. Surface reclamation must be completed, weed free vegetation established, and site accepted prior to closure and bond release.

To help ensure reclamation expectations are understood please contact Laura Hartman (970) 882-1143 or Jamie DeMarco (970) 385-1353 to schedule a field meeting at the location to discuss reclamation procedures. This meeting must take place in advance of any reclamation earthwork.

District I
1625 N. French Dr., Hobbs, NM 88240
Phone:(575) 393-6161 Fax:(575) 393-0720
District II
811 S. First St., Artesia, NM 88210
Phone:(575) 748-1283 Fax:(575) 748-9720
District III
1000 Rio Brazos Rd., Aztec, NM 87410
Phone:(505) 334-6178 Fax:(505) 334-6170
District IV
1220 S. St Francis Dr., Santa Fe, NM 87505
Phone:(505) 476-3470 Fax:(505) 476-3462

State of New Mexico
Energy, Minerals and Natural Resources
Oil Conservation Division
1220 S. St Francis Dr.
Santa Fe, NM 87505

CONDITIONS

Action 210129

CONDITIONS

Operator: HILCORP ENERGY COMPANY 1111 Travis Street Houston, TX 77002	OGRID: 372171
	Action Number: 210129
	Action Type: [C-103] NOI Plug & Abandon (C-103F)

CONDITIONS

Created By	Condition	Condition Date
john.harrison	None	5/15/2023