

Submit a Copy To Appropriate District Office
 District I – (575) 393-6161
 1625 N. French Dr., Hobbs, NM 88240
 District II – (575) 748-1283
 811 S. First St., Artesia, NM 88210
 District III – (505) 334-6178
 1000 Rio Brazos Rd., Aztec, NM 87410
 District IV – (505) 476-3460
 1220 S. St. Francis Dr., Santa Fe, NM 87505

State of New Mexico
 Energy, Minerals and Natural Resources

Form C-103
 Revised July 18, 2013

OIL CONSERVATION DIVISION
 1220 South St. Francis Dr.
 Santa Fe, NM 87505

SUNDRY NOTICES AND REPORTS ON WELLS (DO NOT USE THIS FORM FOR PROPOSALS TO DRILL OR TO DEEPEN OR PLUG BACK TO A DIFFERENT RESERVOIR. USE "APPLICATION FOR PERMIT" (FORM C-101) FOR SUCH PROPOSALS.)		WELL API NO. MULTIPLE
1. Type of Well: Oil Well <input checked="" type="checkbox"/> Gas Well <input type="checkbox"/> Other <input type="checkbox"/>		5. Indicate Type of Lease STATE <input checked="" type="checkbox"/> FEE <input type="checkbox"/>
2. Name of Operator EOG Resources, Inc.		6. State Oil & Gas Lease No. VB-844-1 & VB-845-1
3. Address of Operator P.O. Box 2267, Midland, TX 79702		7. Lease Name or Unit Agreement Name Quijote 2 State Com
4. Well Location Unit Letter _____: _____ feet from the _____ line and _____ feet from the _____ line Section 2 Township 26S Range 32E NMPM Lea County		8. Well Number MULTIPLE
11. Elevation (Show whether DR, RKB, RT, GR, etc.)		9. OGRID Number 7377
		10. Pool name or Wildcat

12. Check Appropriate Box to Indicate Nature of Notice, Report or Other Data

NOTICE OF INTENTION TO:		SUBSEQUENT REPORT OF:	
PERFORM REMEDIAL WORK <input type="checkbox"/>	PLUG AND ABANDON <input type="checkbox"/>	REMEDIAL WORK <input type="checkbox"/>	ALTERING CASING <input type="checkbox"/>
TEMPORARILY ABANDON <input type="checkbox"/>	CHANGE PLANS <input type="checkbox"/>	COMMENCE DRILLING OPNS. <input type="checkbox"/>	P AND A <input type="checkbox"/>
PULL OR ALTER CASING <input type="checkbox"/>	MULTIPLE COMPL <input type="checkbox"/>	CASING/CEMENT JOB <input type="checkbox"/>	
DOWNHOLE COMMINGLE <input type="checkbox"/>			
CLOSED-LOOP SYSTEM <input type="checkbox"/>			
OTHER: <input type="checkbox"/>		OTHER: PLC-715A <input checked="" type="checkbox"/>	

13. Describe proposed or completed operations. (Clearly state all pertinent details, and give pertinent dates, including estimated date of starting any proposed work). SEE RULE 19.15.7.14 NMAC. For Multiple Completions: Attach wellbore diagram of proposed completion or recompletion.

Pursuant to Administrative Order PLC-715A EOG Resources, Inc. ("EOG") respectfully request to add the following wells authorized to commingle production at the central tank battery located in the NE4 of Section 2, Township 26 South, Range 32 East, Lea County, NM. All production from the subject well will be allocated using readings from individual well meters.

Quijote 2 State Com 101H	30-025-51349
Quijote 2 State Com 201H	30-025-51350
Quijote 2 State Com 202H	30-025-51351
Quijote 2 State Com 203H	30-025-51352
Quijote 2 State Com 301H	30-025-51353
Quijote 2 State Com 302H	30-025-51354

Spud Date:

Rig Release Date:

I hereby certify that the information above is true and complete to the best of my knowledge and belief.

SIGNATURE Lisa Youngblood TITLE Regulatory Specialist DATE 05/17/2023

Type or print name Lisa Youngblood E-mail address: lisa_youngblood@eogresources.com PHONE: 432-247-6331

For State Use Only

APPROVED BY: Dean R McClure TITLE Petroleum Engineer DATE 05/18/2023

Conditions of Approval (if any):

District I
1625 N. French Dr., Hobbs, NM 88240
Phone: (575) 393-6161 Fax: (575) 393-0720

District II
811 S. First St., Artesia, NM 88210
Phone: (575) 748-1283 Fax: (575) 748-9720

District III
1000 Rio Brazos Road, Aztec, NM 87410
Phone: (505) 334-6178 Fax: (505) 334-6170

District IV
1220 S. St. Francis Dr., Santa Fe, NM 87505
Phone: (505) 476-3460 Fax: (505) 476-3462

State of New Mexico
Energy, Minerals & Natural Resources
Department
OIL CONSERVATION DIVISION
1220 South St. Francis Dr.
Santa Fe, NM 87505

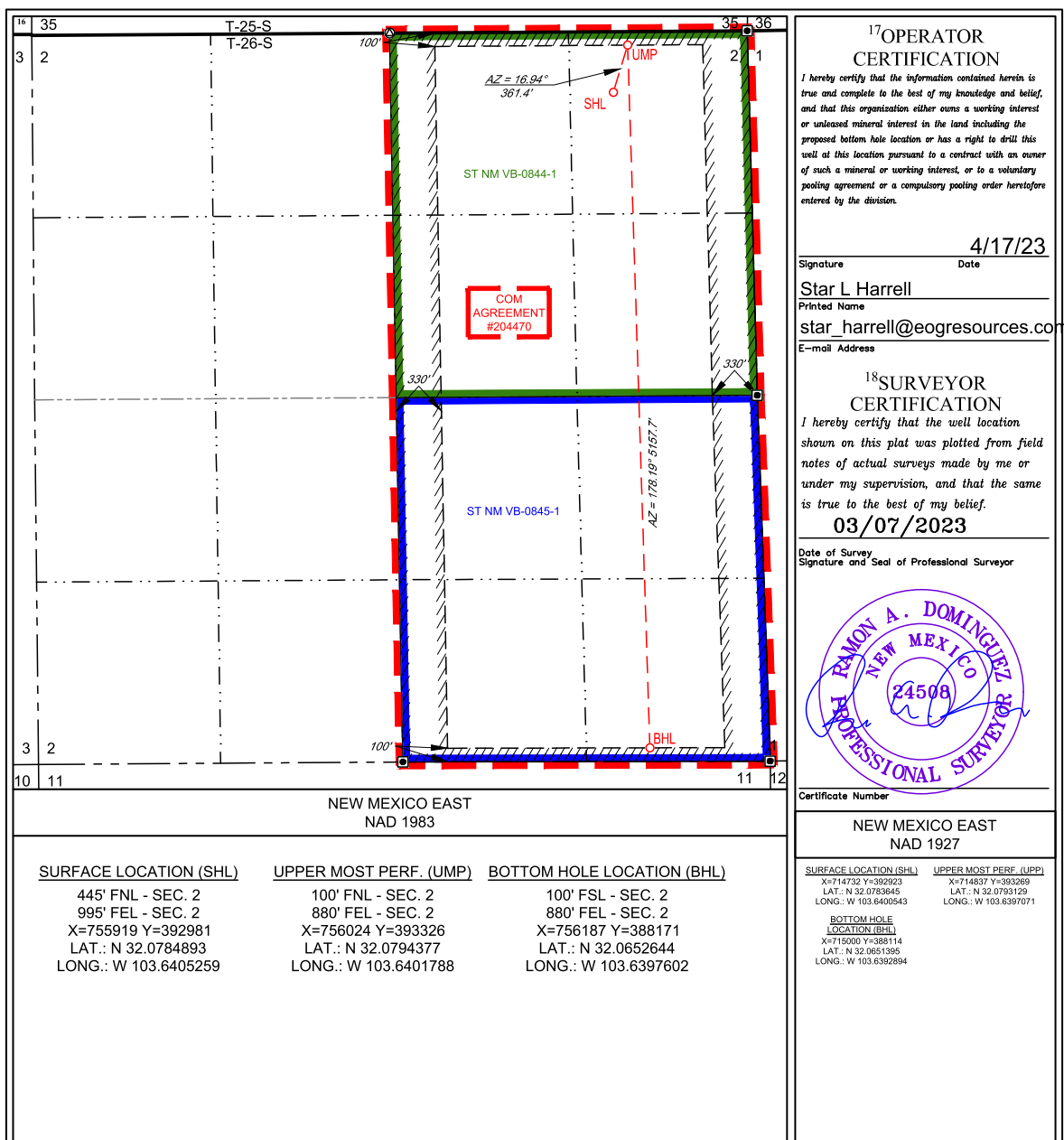
FORM C-102
Revised August 1, 2011
Submit one copy to appropriate
District Office

AMENDED REPORT

WELL LOCATION AND ACREAGE DEDICATION PLAT

¹ API Number 30-025- 51349		² Pool Code 97838		³ Pool Name Jennings; Upper Bone Spring Shale					
⁴ Property Code 325727		⁵ Property Name QUIJOTE 2 STATE COM						⁶ Well Number 101H	
⁷ OGRID No. 7377		⁸ Operator Name EOG RESOURCES, INC.						⁹ Elevation 3339'	
¹⁰ Surface Location									
UL or lot no. A	Section 2	Township 26-S	Range 32-E	Lot Idn -	Feet from the 445'	North/South line NORTH	Feet from the 995'	East/West line EAST	County LEA
¹¹ Bottom Hole Location If Different From Surface									
UL or lot no. P	Section 2	Township 26-S	Range 32-E	Lot Idn -	Feet from the 100'	North/South line SOUTH	Feet from the 880'	East/West line EAST	County LEA
¹² Dedicated Acres 320		¹³ Joint or Infill		¹⁴ Consolidation Code		¹⁵ Order No. COM AGREEMENT #204470			

No allowable will be assigned to this completion until all interests have been consolidated or a non-standard unit has been approved by the division.



District I
1625 N. French Dr., Hobbs, NM 88240
Phone: (575) 393-6161 Fax: (575) 393-0720

District II
811 S. First St., Artesia, NM 88210
Phone: (575) 748-1283 Fax: (575) 748-9720

District III
1000 Rio Brazos Road, Aztec, NM 87410
Phone: (505) 334-6178 Fax: (505) 334-6170

District IV
1220 S. St. Francis Dr., Santa Fe, NM 87505
Phone: (505) 476-3460 Fax: (505) 476-3462

State of New Mexico
Energy, Minerals & Natural Resources
Department
OIL CONSERVATION DIVISION
1220 South St. Francis Dr.
Santa Fe, NM 87505

FORM C-102
Revised August 1, 2011
Submit one copy to appropriate
District Office

☐ **AMENDED REPORT**

WELL LOCATION AND ACREAGE DEDICATION PLAT

¹ API Number 30-025- 51350		² Pool Code 97838		³ Pool Name Jennings; Upper Bone Spring Shale					
⁴ Property Code 325727		⁵ Property Name QUIJOTE 2 STATE COM				⁶ Well Number 201H			
⁷ OGRID No. 7377		⁸ Operator Name EOG RESOURCES, INC.				⁹ Elevation 3339'			
¹⁰ Surface Location									
UL or lot no. A	Section 2	Township 26-S	Range 32-E	Lot Idn -	Feet from the 445'	North/South line NORTH	Feet from the 929'	East/West line EAST	County LEA
¹¹ Bottom Hole Location If Different From Surface									
UL or lot no. P	Section 2	Township 26-S	Range 32-E	Lot Idn -	Feet from the 100'	North/South line SOUTH	Feet from the 330'	East/West line EAST	County LEA
¹² Dedicated Acres 320		¹³ Joint or Infill		¹⁴ Consolidation Code		¹⁵ Order No. COM AGREEMENT #204470			

No allowable will be assigned to this completion until all interests have been consolidated or a non-standard unit has been approved by the division.

16 35
3 2 T-25-S
T-26-S
100'

35 36
2 1
KOP/UMP
SHL
AZ = 59.38°
684.9'

ST NM VB-0844-1

COM AGREEMENT
#204470

330°

ST NM VB-0845-1

P.I.

AZ = 178.42°, 2563.5'

330°

AZ = 178.42°, 2563.5'

100'

LMP/BHL

3 2
10 11
11 12

NEW MEXICO EAST
NAD 1983

SURFACE LOCATION (SHL)
445' FNL - SEC. 2
929' FEL - SEC. 2
X=755985 Y=392981
LAT.: N 32.0784893
LONG.: W 103.6403128

LOWER MOST PERF. (LMP)
BOTTOM HOLE LOCATION (BHL)
100' FSL - SEC. 2
330' FEL - SEC. 2
X=756737 Y=388172
LAT.: N 32.0652579
LONG.: W 103.6379838

KICK OFF POINT (KOP)
UPPER MOST PERF. (UMP)
100' FNL - SEC. 2
330' FEL - SEC. 2
X=756574 Y=393330
LAT.: N 32.0794380
LONG.: W 103.6384027

P.I.
2675' FSL - SEC. 2
330' FEL - SEC. 2
X=756645 Y=390748
LAT.: N 32.0723381
LONG.: W 103.6382259

**17 OPERATOR
CERTIFICATION**
I hereby certify that the information contained herein is true and complete to the best of my knowledge and belief, and that this organization either owns a working interest or unleased mineral interest in the land including the proposed bottom hole location or has a right to drill this well at this location pursuant to a contract with an owner of such a mineral or working interest, or to a voluntary pooling agreement or a compulsory pooling order heretofore entered by the division.
Star L Harrell 4/17/23
Signature Date
Star L Harrell
Printed Name
star_harrell@eogresources.com
E-mail Address

**18 SURVEYOR
CERTIFICATION**
I hereby certify that the well location shown on this plat was plotted from field notes of actual surveys made by me or under my supervision, and that the same is true to the best of my belief.
03/07/2023
Date of Survey
Signature and Seal of Professional Surveyor

**NEW MEXICO EAST
NAD 1927**

SURFACE LOCATION (SHL)
X=714798 Y=392924
LAT.: N 32.0783845
LONG.: W 103.6398412

KICK OFF POINT (KOP)
UPPER MOST PERF. (UMP)
X=715388 Y=393272
LAT.: N 32.0793132
LONG.: W 103.6379311

P.I.
X=715459 Y=390690
LAT.: N 32.0722133
LONG.: W 103.6377547

LOWER MOST PERF. (LMP)
BOTTOM HOLE LOCATION (BHL)
X=715550 Y=388115
LAT.: N 32.0651330
LONG.: W 103.6375131

District I
1625 N. French Dr., Hobbs, NM 88240
Phone: (575) 393-6161 Fax: (575) 393-0720
District II
811 S. First St., Artesia, NM 88210
Phone: (575) 748-1283 Fax: (575) 748-9720
District III
1000 Rio Brazos Road, Aztec, NM 87410
Phone: (505) 334-6178 Fax: (505) 334-6170
District IV
1220 S. St. Francis Dr., Santa Fe, NM 87505
Phone: (505) 476-3460 Fax: (505) 476-3462

State of New Mexico
Energy, Minerals & Natural Resources
Department
OIL CONSERVATION DIVISION
1220 South St. Francis Dr.
Santa Fe, NM 87505

FORM C-102
Revised August 1, 2011
Submit one copy to appropriate
District Office

☐ AMENDED REPORT

WELL LOCATION AND ACREAGE DEDICATION PLAT

¹ API Number 30-025-51351		² Pool Code 97838		³ Pool Name Jennings; Upper Bone Spring Shale	
⁴ Property Code 325727		⁵ Property Name QUIJOTE 2 STATE COM			⁶ Well Number 202H
⁷ OGRID No. 7377		⁸ Operator Name EOG RESOURCES, INC.			⁹ Elevation 3330'
¹⁰ Surface Location					
UL or lot no. B	Section 2	Township 26-S	Range 32-E	Lot Idn -	Feet from the 300'
		North/South line NORTH		Feet from the 1685'	East/West line EAST
				County LEA	
¹¹ Bottom Hole Location If Different From Surface					
UL or lot no. P	Section 2	Township 26-S	Range 32-E	Lot Idn -	Feet from the 100'
		North/South line SOUTH		Feet from the 1100'	East/West line EAST
				County LEA	
¹² Dedicated Acres 320		¹³ Joint or Infill		¹⁴ Consolidation Code	
				¹⁵ Order No. COM AGREEMENT #204470	

No allowable will be assigned to this completion until all interests have been consolidated or a non-standard unit has been approved by the division.

¹⁶ 35 3 2 T-25-S T-26-S 100' 330' 100' 11 12				¹⁷ OPERATOR CERTIFICATION I hereby certify that the information contained herein is true and complete to the best of my knowledge and belief, and that this organization either owns a working interest or unleased mineral interest in the land including the proposed bottom hole location or has a right to drill this well at this location pursuant to a contract with an owner of such a mineral or working interest, or to a voluntary pooling agreement or a compulsory pooling order heretofore entered by the division. Star L Harrell 4/17/23 Signature Date Star L Harrell Printed Name star_harrell@eogresources.com E-mail Address	
¹⁸ SURVEYOR CERTIFICATION I hereby certify that the well location shown on this plat was plotted from field notes of actual surveys made by me or under my supervision, and that the same is true to the best of my belief. 03/09/2023 Date of Survey Signature and Seal of Professional Surveyor				Certificate Number NEW MEXICO EAST NAD 1927	
SURFACE LOCATION (SHL) 300' FNL - SEC. 2 1685' FEL - SEC. 2 X=755224 Y=393121 LAT.: N 32.0788873 LONG.: W 103.6427658		KICK OFF POINT (KOP) UPPER MOST PERF. (UMP) 100' FNL - SEC. 2 1100' FEL - SEC. 2 X=755804 Y=393325 LAT.: N 32.0794376 LONG.: W 103.6408892		LOWER MOST PERF. (LMP) BOTTOM HOLE LOCATION (BHL) 100' FSL - SEC. 2 1100' FEL - SEC. 2 X=755967 Y=388171 LAT.: N 32.0652670 LONG.: W 103.6404708	
SURFACE LOCATION (SHL) X=714037 Y=393063 LAT.: N 32.0787625 LONG.: W 103.6422941 LOWER MOST PERF. (LMP) BOTTOM HOLE LOCATION (BHL) X=714780 Y=388113 LAT.: N 32.0651421 LONG.: W 103.6399999		KICK OFF POINT (KOP) UPPER MOST PERF. (UMP) X=714617 Y=393267 LAT.: N 32.0793127 LONG.: W 103.6404175			

District I
1625 N. French Dr., Hobbs, NM 88240
Phone: (575) 393-6161 Fax: (575) 393-0720
District II
811 S. First St., Artesia, NM 88210
Phone: (575) 748-1283 Fax: (575) 748-9720
District III
1000 Rio Brazos Road, Aztec, NM 87410
Phone: (505) 334-6178 Fax: (505) 334-6170
District IV
1220 S. St. Francis Dr., Santa Fe, NM 87505
Phone: (505) 476-3460 Fax: (505) 476-3462

State of New Mexico
Energy, Minerals & Natural Resources
Department
OIL CONSERVATION DIVISION
1220 South St. Francis Dr.
Santa Fe, NM 87505

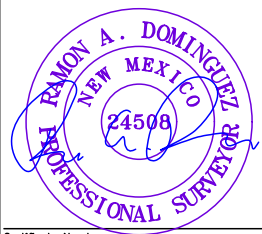
FORM C-102
Revised August 1, 2011
Submit one copy to appropriate
District Office

☐ AMENDED REPORT

WELL LOCATION AND ACREAGE DEDICATION PLAT

¹ API Number 30-025-51352		² Pool Code 97838		³ Pool Name Jennings; Upper Bone Spring Shale	
⁴ Property Code 325727		⁵ Property Name QUIJOTE 2 STATE COM			⁶ Well Number 203H
⁷ OGRID No. 7377		⁸ Operator Name EOG RESOURCES, INC.			⁹ Elevation 3330'
¹⁰ Surface Location					
UL or lot no. B	Section 2	Township 26-S	Range 32-E	Lot Idn -	Feet from the 300'
		North/South line NORTH		Feet from the 1718'	East/West line EAST
				County LEA	
¹¹ Bottom Hole Location If Different From Surface					
UL or lot no. 0	Section 2	Township 26-S	Range 32-E	Lot Idn -	Feet from the 100'
		North/South line SOUTH		Feet from the 1870'	East/West line EAST
				County LEA	
¹² Dedicated Acres 320		¹³ Joint or Infill		¹⁴ Consolidation Code	
				¹⁵ Order No. COM AGREEMENT #204470	

No allowable will be assigned to this completion until all interests have been consolidated or a non-standard unit has been approved by the division.

¹⁶ 35 3 2 T-25-S T-26-S 100' 330' 100' 11 12		¹⁷ OPERATOR CERTIFICATION I hereby certify that the information contained herein is true and complete to the best of my knowledge and belief, and that this organization either owns a working interest or unleased mineral interest in the land including the proposed bottom hole location or has a right to drill this well at this location pursuant to a contract with an owner of such a mineral or working interest, or to a voluntary pooling agreement or a compulsory pooling order heretofore entered by the division. <i>Star L Harrell</i> 4/17/23 Signature Date Star L Harrell Printed Name star_harrell@eogresources.com E-mail Address	
¹⁸ SURVEYOR CERTIFICATION I hereby certify that the well location shown on this plat was plotted from field notes of actual surveys made by me or under my supervision, and that the same is true to the best of my belief. 03/09/2023 Date of Survey Signature and Seal of Professional Surveyor		 Certificate Number	
NEW MEXICO EAST NAD 1983		NEW MEXICO EAST NAD 1927	
SURFACE LOCATION (SHL) 300' FNL - SEC. 2 1718' FEL - SEC. 2 X=755191 Y=393121 LAT.: N 32.0788873 LONG.: W 103.6428723		KICK OFF POINT (KOP) UPPER MOST PERF. (UMP) 100' FNL - SEC. 2 1870' FEL - SEC. 2 X=755034 Y=393320 LAT.: N 32.0794371 LONG.: W 103.6433757	
LOWER MOST PERF. (LMP) BOTTOM HOLE LOCATION (BHL) 100' FSL - SEC. 2 1870' FEL - SEC. 2 X=755196 Y=388169 LAT.: N 32.0652761 LONG.: W 103.6429578		SURFACE LOCATION (SHL) X=714004 Y=393063 LAT.: N 32.0787625 LONG.: W 103.6424008 KICK OFF POINT (KOP) UPPER MOST PERF. (UMP) X=713847 Y=393262 LAT.: N 32.0789123 LONG.: W 103.6429040 LOWER MOST PERF. (LMP) BOTTOM HOLE LOCATION (BHL) X=714009 Y=388112 LAT.: N 32.0651512 LONG.: W 103.6424868	

District I
1625 N. French Dr., Hobbs, NM 88240
Phone: (505) 393-6161 Fax: (505) 393-0720
District II
811 S. First St., Artesia, NM 88210
Phone: (505) 748-1283 Fax: (505) 748-9720
District III
1000 Rio Brazos Road, Aztec, NM 87410
Phone: (505) 334-6178 Fax: (505) 334-6170
District IV
1220 S. St. Francis Dr., Santa Fe, NM 87505
Phone: (505) 476-3460 Fax: (505) 476-3462

State of New Mexico
Energy, Minerals & Natural Resources
Department
OIL CONSERVATION DIVISION
1220 South St. Francis Dr.
Santa Fe, NM 87505

FORM C-102

Revised August 1, 2011

Submit one copy to appropriate

District Office

☐ AMENDED REPORT

WC-025 G-08 S253235G; LOWER
BONE SPRING

WELL LOCATION AND ACREAGE DEDICATION PLAT

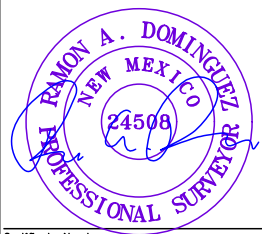
¹ API Number 30-025- 51353		² Pool Code 97838 97903		³ Pool Name Juñcos, Lower Bone Spring State	
⁴ Property Code 325727		⁵ Property Name QUIJOTE 2 STATE COM		⁶ Well Number 301H	
⁷ OGRID No. 7377		⁸ Operator Name EOG RESOURCES, INC.		⁹ Elevation 3339'	

¹⁰ Surface Location									
UL or lot no.	Section	Township	Range	Lot Idn	Feet from the	North/South line	Feet from the	East/West line	County
A	2	26-S	32-E	-	445'	NORTH	962'	EAST	LEA

¹¹ Bottom Hole Location If Different From Surface									
UL or lot no.	Section	Township	Range	Lot Idn	Feet from the	North/South line	Feet from the	East/West line	County
P	2	26-S	32-E	-	100'	SOUTH	550'	EAST	LEA

¹² Dedicated Acres 320	¹³ Joint or Infill	¹⁴ Consolidation Code	¹⁵ Order No. COM AGREEMENT #204470
---	-------------------------------	----------------------------------	---

No allowable will be assigned to this completion until all interests have been consolidated or a non-standard unit has been approved by the division.

¹⁶ 35 3 2 T-25-S T-26-S 100' 330' 100' 11 12		¹⁷ OPERATOR CERTIFICATION I hereby certify that the information contained herein is true and complete to the best of my knowledge and belief, and that this organization either owns a working interest or unleased mineral interest in the land including the proposed bottom hole location or has a right to drill this well at this location pursuant to a contract with an owner of such a mineral or working interest, or to a voluntary pooling agreement or a compulsory pooling order heretofore entered by the division. <i>Star L Harrell</i> 4/17/23 Signature Date Star L Harrell Printed Name star.harrell@eogresources.com E-mail Address	
¹⁸ SURVEYOR CERTIFICATION I hereby certify that the well location shown on this plat was plotted from field notes of actual surveys made by me or under my supervision, and that the same is true to the best of my belief. 03/07/2023 Date of Survey Signature and Seal of Professional Surveyor		 Certificate Number	
NEW MEXICO EAST NAD 1983			
NEW MEXICO EAST NAD 1927			
SURFACE LOCATION (SHL) 445' FNL - SEC. 2 962' FEL - SEC. 2 X=755952 Y=392981 LAT.: N 32.0784893 LONG.: W 103.6404194		KICK OFF POINT (KOP) UPPER MOST PERF. (UMP) 100' FNL - SEC. 2 550' FEL - SEC. 2 X=756354 Y=393329 LAT.: N 32.0794379 LONG.: W 103.6391131	
LOWER MOST PERF. (LMP) BOTTOM HOLE LOCATION (BHL) 100' FSL - SEC. 2 550' FEL - SEC. 2 X=756517 Y=388172 LAT.: N 32.0652605 LONG.: W 103.6386944		SURFACE LOCATION (SHL) X=714765 Y=392923 LAT.: N 32.0783645 LONG.: W 103.6386478 KICK OFF POINT (KOP) UPPER MOST PERF. (UMP) X=715168 Y=393271 LAT.: N 32.0793131 LONG.: W 103.6386415 LOWER MOST PERF. (LMP) BOTTOM HOLE LOCATION (BHL) X=715330 Y=388114 LAT.: N 32.0651356 LONG.: W 103.6382296	

District I
1625 N. French Dr., Hobbs, NM 88240
Phone: (505) 393-6161 Fax: (505) 393-0720
District II
811 S. First St., Artesia, NM 88210
Phone: (505) 748-1283 Fax: (505) 748-9720
District III
1000 Rio Brazos Road, Aztec, NM 87410
Phone: (505) 334-6178 Fax: (505) 334-6170
District IV
1220 S. St. Francis Dr., Santa Fe, NM 87505
Phone: (505) 476-3460 Fax: (505) 476-3462

State of New Mexico
Energy, Minerals & Natural Resources
Department
OIL CONSERVATION DIVISION
1220 South St. Francis Dr.
Santa Fe, NM 87505

FORM C-102
Revised August 1, 2011
Submit one copy to appropriate
District Office

☐ AMENDED REPORT

WELL LOCATION AND ACREAGE DEDICATION PLAT

WC-025 G-08 S253235G; LOWER

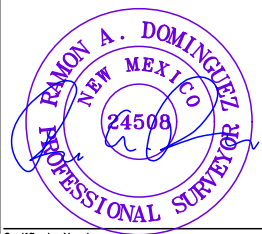
¹ API Number 30-025-51354	² Pool Code 97838 97903	³ Pool Name Leaning Upper Bone Spring Shale BONE SPRING
⁴ Property Code 325727	⁵ Property Name QUIJOTE 2 STATE COM	⁶ Well Number 302H
⁷ OGRID No. 7377	⁸ Operator Name EOG RESOURCES, INC.	⁹ Elevation 3330'

¹⁰ Surface Location									
UL or lot no.	Section	Township	Range	Lot Idn	Feet from the	North/South line	Feet from the	East/West line	County
B	2	26-S	32-E	-	300'	NORTH	1751'	EAST	LEA

¹¹ Bottom Hole Location If Different From Surface									
UL or lot no.	Section	Township	Range	Lot Idn	Feet from the	North/South line	Feet from the	East/West line	County
0	2	26-S	32-E	-	100'	SOUTH	2090'	EAST	LEA

¹² Dedicated Acres 320	¹³ Joint or Infill	¹⁴ Consolidation Code	¹⁵ Order No. COM AGREEMENT #204470
---	-------------------------------	----------------------------------	---

No allowable will be assigned to this completion until all interests have been consolidated or a non-standard unit has been approved by the division.

¹⁶ 35 3 2 T-25-S T-26-S 100' KOP/UMP SHL AZ = 299.88° 397.0' ST NM VB-0844-1 COM AGREEMENT #204470 330' 330' AZ = 178.19° 5152.3' 100' LMP/BHL 11 12 NEW MEXICO EAST NAD 1983		¹⁷ OPERATOR CERTIFICATION I hereby certify that the information contained herein is true and complete to the best of my knowledge and belief, and that this organization either owns a working interest or unleased mineral interest in the land including the proposed bottom hole location or has a right to drill this well at this location pursuant to a contract with an owner of such a mineral or working interest, or to a voluntary pooling agreement or a compulsory pooling order heretofore entered by the division. Star L Harrell 4/17/23 Signature Date Star L Harrell Printed Name star_harrell@eogresources.com E-mail Address ¹⁸ SURVEYOR CERTIFICATION I hereby certify that the well location shown on this plat was plotted from field notes of actual surveys made by me or under my supervision, and that the same is true to the best of my belief. 03/09/2023 Date of Survey Signature and Seal of Professional Surveyor  Certificate Number NEW MEXICO EAST NAD 1927 <table border="1"> <tr> <td>¹⁹SURFACE LOCATION (SHL) X=713871 Y=393063 LAT.: N 32.0787625 LONG.: W 103.642971</td> <td>²⁰KICK OFF POINT (KOP) UPPER MOST PERF. (UMP) X=713627 Y=393281 LAT.: N 32.0783121 LONG.: W 103.6436144</td> </tr> <tr> <td>²¹LOWER MOST PERF. (LMP) BOTTOM HOLE LOCATION (BHL) X=713789 Y=388111 LAT.: N 32.0651536 LONG.: W 103.6431974</td> <td></td> </tr> </table>	¹⁹ SURFACE LOCATION (SHL) X=713871 Y=393063 LAT.: N 32.0787625 LONG.: W 103.642971	²⁰ KICK OFF POINT (KOP) UPPER MOST PERF. (UMP) X=713627 Y=393281 LAT.: N 32.0783121 LONG.: W 103.6436144	²¹ LOWER MOST PERF. (LMP) BOTTOM HOLE LOCATION (BHL) X=713789 Y=388111 LAT.: N 32.0651536 LONG.: W 103.6431974	
¹⁹ SURFACE LOCATION (SHL) X=713871 Y=393063 LAT.: N 32.0787625 LONG.: W 103.642971	²⁰ KICK OFF POINT (KOP) UPPER MOST PERF. (UMP) X=713627 Y=393281 LAT.: N 32.0783121 LONG.: W 103.6436144					
²¹ LOWER MOST PERF. (LMP) BOTTOM HOLE LOCATION (BHL) X=713789 Y=388111 LAT.: N 32.0651536 LONG.: W 103.6431974						

SURFACE LOCATION (SHL)	KICK OFF POINT (KOP) UPPER MOST PERF. (UMP)	LOWER MOST PERF. (LMP) BOTTOM HOLE LOCATION (BHL)
300' FNL - SEC. 2 1715' FEL - SEC. 2 X=755158 Y=393121 LAT.: N 32.0788873 LONG.: W 103.6429789	100' FNL - SEC. 2 2090' FEL - SEC. 2 X=754814 Y=393318 LAT.: N 32.0794370 LONG.: W 103.6440862	100' FSL - SEC. 2 2090' FEL - SEC. 2 X=754976 Y=388169 LAT.: N 32.0652787 LONG.: W 103.6436683

District I
1625 N. French Dr., Hobbs, NM 88240
Phone:(575) 393-6161 Fax:(575) 393-0720
District II
811 S. First St., Artesia, NM 88210
Phone:(575) 748-1283 Fax:(575) 748-9720
District III
1000 Rio Brazos Rd., Aztec, NM 87410
Phone:(505) 334-6178 Fax:(505) 334-6170
District IV
1220 S. St Francis Dr., Santa Fe, NM 87505
Phone:(505) 476-3470 Fax:(505) 476-3462

State of New Mexico
Energy, Minerals and Natural Resources
Oil Conservation Division
1220 S. St Francis Dr.
Santa Fe, NM 87505

CONDITIONS

Action 217722

CONDITIONS

Operator: EOG RESOURCES INC P.O. Box 2267 Midland, TX 79702	OGRID: 7377
	Action Number: 217722
	Action Type: [C-103] Sub. General Sundry (C-103Z)

CONDITIONS

Created By	Condition	Condition Date
dmcclure	Please review the content of the Administrative Order and approved request(s) to ensure you are familiar with the authorities granted and any conditions of approval. If you have any questions regarding this matter, please contact me.	5/18/2023