

Form 3160-3  
(June 2015)UNITED STATES  
DEPARTMENT OF THE INTERIOR  
BUREAU OF LAND MANAGEMENT

## APPLICATION FOR PERMIT TO DRILL OR REENTER

FORM APPROVED  
OMB No. 1004-0137  
Expires: January 31, 2018

1a. Type of work: <input type="checkbox"/> DRILL <input type="checkbox"/> REENTER		5. Lease Serial No.
1b. Type of Well: <input type="checkbox"/> Oil Well <input type="checkbox"/> Gas Well <input type="checkbox"/> Other		6. If Indian, Allottee or Tribe Name
1c. Type of Completion: <input type="checkbox"/> Hydraulic Fracturing <input type="checkbox"/> Single Zone <input type="checkbox"/> Multiple Zone		7. If Unit or CA Agreement, Name and No.
		8. Lease Name and Well No. <b>[325487]</b>
2. Name of Operator <b>[6137]</b>		9. API Well No. <b>30-025-51492</b>
3a. Address	3b. Phone No. (include area code)	10. Field and Pool, or Exploratory <b>[97958]</b>
4. Location of Well (Report location clearly and in accordance with any State requirements. *) At surface At proposed prod. zone		11. Sec., T. R. M. or Blk. and Survey or Area
14. Distance in miles and direction from nearest town or post office*		12. County or Parish
		13. State
15. Distance from proposed* location to nearest property or lease line, ft. (Also to nearest drig. unit line, if any)	16. No of acres in lease	17. Spacing Unit dedicated to this well
18. Distance from proposed location* to nearest well, drilling, completed, applied for, on this lease, ft.	19. Proposed Depth	20. BLM/BIA Bond No. in file
21. Elevations (Show whether DF, KDB, RT, GL, etc.)	22. Approximate date work will start*	23. Estimated duration
24. Attachments		
The following, completed in accordance with the requirements of Onshore Oil and Gas Order No. 1, and the Hydraulic Fracturing rule per 43 CFR 3162.3-3 (as applicable)		
1. Well plat certified by a registered surveyor. 2. A Drilling Plan. 3. A Surface Use Plan (if the location is on National Forest System Lands, the SUPO must be filed with the appropriate Forest Service Office).		4. Bond to cover the operations unless covered by an existing bond on file (see Item 20 above). 5. Operator certification. 6. Such other site specific information and/or plans as may be requested by the BLM.
25. Signature	Name (Printed/Typed)	Date
Title		
Approved by (Signature)	Name (Printed/Typed)	Date
Title	Office	
Application approval does not warrant or certify that the applicant holds legal or equitable title to those rights in the subject lease which would entitle the applicant to conduct operations thereon. Conditions of approval, if any, are attached.		
Title 18 U.S.C. Section 1001 and Title 43 U.S.C. Section 1212, make it a crime for any person knowingly and willfully to make to any department or agency of the United States any false, fictitious or fraudulent statements or representations as to any matter within its jurisdiction.		

NGMP Rec 05/15/2023

SL

(Continued on page 2)

APPROVED WITH CONDITIONS

Approval Date: 03/09/2022

KZ  
05/23/2023

\*(Instructions on page 2)

**DISTRICT I**  
1625 N. FRENCH DR., HOBBS, NM 88240  
Phone: (575) 393-6161 Fax: (575) 393-0720

**DISTRICT II**  
811 S. FIRST ST., ARTESIA, NM 88210  
Phone: (575) 748-1283 Fax: (575) 748-9720

**DISTRICT III**  
1000 RIO BRAZOS RD., AZTEC, NM 87410  
Phone: (505) 334-6178 Fax: (505) 334-6170

**DISTRICT IV**  
1220 S. ST. FRANCIS DR., SANTA FE, NM 87505  
Phone: (505) 476-3460 Fax: (505) 476-3462

State of New Mexico  
Energy, Minerals & Natural Resources Department  
**OIL CONSERVATION DIVISION**  
1220 SOUTH ST. FRANCIS DR.  
Santa Fe, New Mexico 87505

Form C-102  
Revised August 1, 2011  
Submit one copy to appropriate  
District Office

☐ AMENDED REPORT

**WELL LOCATION AND ACREAGE DEDICATION PLAT**

API Number <b>30-025-51492</b>	Pool Code <b>97958</b>	Pool Name <b>WC-025 G-08 S233528D; LOWER BONE SPRING</b>
Property Code <b>325487</b>	Property Name <b>RED BULL 29-20 FED</b>	Well Number <b>5H</b>
OGRID No. <b>6137</b>	Operator Name <b>DEVON ENERGY PRODUCTION COMPANY, L.P.</b>	Elevation <b>3424.0'</b>

**Surface Location**

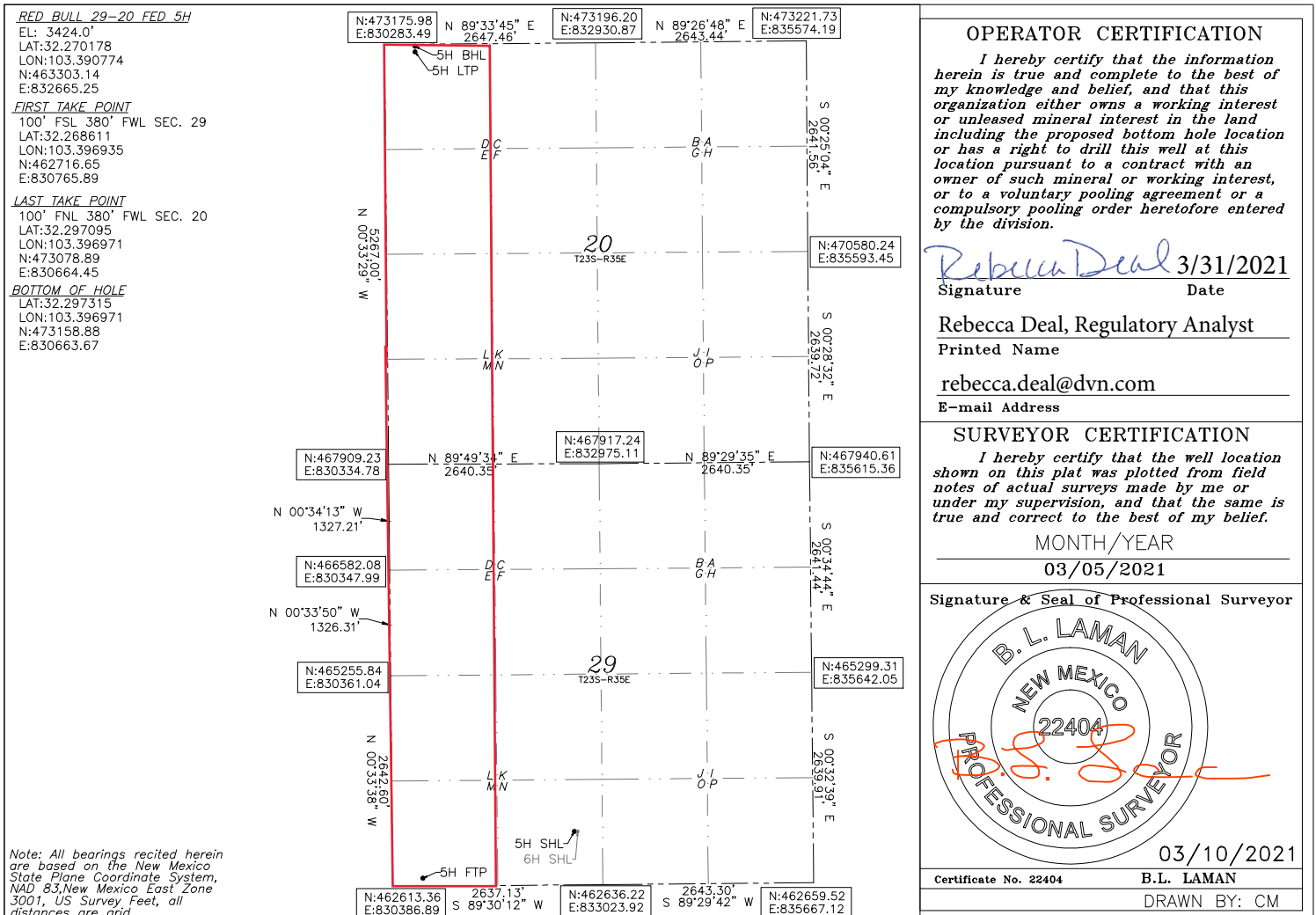
UL or lot No.	Section	Township	Range	Lot Idn	Feet from the	North/South line	Feet from the	East/West line	County
N	29	23-S	35-E		670	SOUTH	2285	WEST	LEA

**Bottom Hole Location If Different From Surface**

UL or lot No.	Section	Township	Range	Lot Idn	Feet from the	North/South line	Feet from the	East/West line	County
D	20	23-S	35-E		20	NORTH	380	WEST	LEA

Dedicated Acres	Joint or Infill	Consolidation Code	Order No.
<b>320</b>			

NO ALLOWABLE WILL BE ASSIGNED TO THIS COMPLETION UNTIL ALL INTERESTS HAVE BEEN CONSOLIDATED  
OR A NON-STANDARD UNIT HAS BEEN APPROVED BY THE DIVISION



Intent ☐ As Drilled ☐

API # <b>30-025-51492</b>		
Operator Name:	Property Name:	Well Number

## Kick Off Point (KOP)

UL	Section	Township	Range	Lot	Feet	From N/S	Feet	From E/W	County
Latitude					Longitude				NAD

## First Take Point (FTP)

UL	Section	Township	Range	Lot	Feet	From N/S	Feet	From E/W	County
Latitude					Longitude				NAD

## Last Take Point (LTP)

UL	Section	Township	Range	Lot	Feet	From N/S	Feet	From E/W	County
Latitude					Longitude				NAD

Is this well the defining well for the Horizontal Spacing Unit? ☐Is this well an infill well? ☐

If infill is yes please provide API if available, Operator Name and well number for Defining well for Horizontal Spacing Unit.

API #		
Operator Name:	Property Name:	Well Number

KZ 06/29/2018

Red Bull 29-20 Fed 5H

**1. Geologic Formations**

TVD of target	9966	Pilot hole depth	N/A
MD at TD:	19893	Deepest expected fresh water	

**Basin**

Formation	Depth (TVD) from KB	Water/Mineral Bearing/Target Zone?	Hazards*
Rustler	744		
Salt	1071		
Base of Salt	4374		
Delaware	4627		
Brushy Canyon	6909		
1st Bone Spring Lime	8567		
Bone Spring 1st	9586		

\*H2S, water flows, loss of circulation, abnormal pressures, etc.

Red Bull 29-20 Fed 5H

**2. Casing Program**

Hole Size	Csg. Size	Wt (PPF)	Grade	Conn	Casing Interval		Casing Interval	
					From (MD)	To (MD)	From (TVD)	To (TVD)
17 1/2	13 3/8	48	H40	BTC	0	769	0	769
12 1/4	9 5/8	40	J-55	BTC	0	4474	0	4474
8 3/4	5 1/2	17	P110	BTC	0	19893	0	9966

- All casing strings will be tested in accordance with Onshore Oil and Gas Order #2 IILB.1.h Must have table for contingency casing.

Red Bull 29-20 Fed 5H

**3. Cementing Program (3-String Primary Design)**

Casing	# Sks	TOC	Wt. (lb/gal)	Yld (ft <sup>3</sup> /sack)	Slurry Description
Surface	595	Surf	13.2	1.4	Lead: Class C Cement + additives
Int 1	488	Surf	9.0	3.3	Lead: Class C Cement + additives
	154	500' above shoe	13.2	1.4	Tail: Class H / C + additives
Int 1 Intermediate Squeeze	As Needed	Surf	9.0	3.3	Squeeze Lead: Class C Cement + additives
	488	Surf	9.0	3.3	Lead: Class C Cement + additives
	154	500' above shoe	13.2	1.4	Tail: Class H / C + additives
Production	486	500' tieback	9.0	3.3	Lead: Class H / C + additives
	1972	KOP	13.2	1.4	Tail: Class H / C + additives

If a DV tool is ran the depth(s) will be adjusted based on hole conditions and cement volumes will be adjusted proportionally. Slurry weights will be adjusted based on estimated fracture gradient of the formation. DV tool will be set a minimum of 50 feet below previous casing and a minimum of 200 feet above current shoe. If cement is not returned to surface during the primary cement job on the surface casing string, a planned top job will be conducted immediately after completion of the primary job.

Casing String	% Excess
Surface	50%
Intermediate	30%
Production	10%

Red Bull 29-20 Fed 5H

**4. Pressure Control Equipment (Three String Design)**

BOP installed and tested before drilling which hole?	Size?	Min. Required WP	Type	✓	Tested to:
Int 1	13-58"	5M	Annular	X	50% of rated working pressure
			Blind Ram	X	5M
			Pipe Ram		
			Double Ram	X	
			Other*		
Production	13-5/8"	5M	Annular	X	50% of rated working pressure
			Blind Ram	X	5M
			Pipe Ram		
			Double Ram	X	
			Other*		
			Annular (5M)		
			Blind Ram		
			Pipe Ram		
			Double Ram		
			Other*		

Red Bull 29-20 Fed 5H

**5. Mud Program (Three String Design)**

Section	Type	Weight (ppg)
Surface	FW Gel	8.5-9
Intermediate	Brine	10-10.5
Production	WBM	8.5-9

Sufficient mud materials to maintain mud properties and meet minimum lost circulation and weight increase requirements will be kept on location at all times.

What will be used to monitor the loss or gain of fluid?	PVT/Pason/Visual Monitoring
---	-----------------------------

**6. Logging and Testing Procedures**

Logging, Coring and Testing	
X	Will run GR/CNL from TD to surface (horizontal well - vertical portion of hole). Stated logs run will be in the Completion Report and submitted to the BLM.
	No logs are planned based on well control or offset log information.
	Drill stem test? If yes, explain.
	Coring? If yes, explain.

Additional logs planned		Interval
	Resistivity	
	Density	
X	CBL	Production casing
X	Mud log	KOP to TD
	PEX	

**7. Drilling Conditions**

Condition	Specify what type and where?
BH pressure at deepest TVD	4664
Abnormal temperature	No

Mitigation measure for abnormal conditions. Describe. Lost circulation material/sweeps/mud scavengers.

Hydrogen Sulfide (H<sub>2</sub>S) monitors will be installed prior to drilling out the surface shoe. If H<sub>2</sub>S is detected in concentrations greater than 100 ppm, the operator will comply with the provisions of Onshore Oil and Gas Order #6. If Hydrogen Sulfide is encountered measured values and formations will be provided to the BLM.

N	H <sub>2</sub> S is present
Y	H <sub>2</sub> S plan attached.

## 8. Other facets of operation

Is this a walking operation? Potentially

- 1 If operator elects, drilling rig will batch drill the surface holes and run/cement surface casing; walking the rig to next wells on the pad.
- 2 The drilling rig will then batch drill the intermediate sections and run/cement intermediate casing; the wellbore will be isolated with a blind flange and pressure gauge installed for monitoring the well before walking to the next well.
- 3 The drilling rig will then batch drill the production hole sections on the wells with OBM, run/cement production casing, and install TA caps or tubing heads for completions.

NOTE: During batch operations the drilling rig will be moved from well to well however, it will not be removed from the pad until all wells have production casing run/cemented.

Will be pre-setting casing? Potentially

- 1 Spudder rig will move in and batch drill surface hole.
  - a. Rig will utilize fresh water based mud to drill surface hole to TD. Solids control will be handled entirely on a closed loop basis.
- 2 After drilling the surface hole section, the spudder rig will run casing and cement following all of the applicable rules and regulations (OnShore Order 2, all COAs and NMOCD regulations).
- 3 The wellhead will be installed and tested once the surface casing is cut off and the WOC time has been reached.
- 4 A blind flange with the same pressure rating as the wellhead will be installed to seal the wellbore. Pressure will be monitored with a pressure gauge installed on the wellhead.
- 5 Spudder rig operations is expected to take 4-5 days per well on a multi-well pad.
- 6 The NMOCD will be contacted and notified 24 hours prior to commencing spudder rig operations.
- 7 Drilling operations will be performed with drilling rig. At that time an approved BOP stack will be nipped up and tested on the wellhead before drilling operations commences on each well.
  - a. The NMOCD will be contacted / notified 24 hours before the drilling rig moves back on to the pad with the pre-set surface casing.

Attachments

X Directional Plan  
           Other, describe



U.S. Department of the Interior  
BUREAU OF LAND MANAGEMENT

# Drilling Plan Data Report

03/10/2022

APD ID: 10400072136

Submission Date: 04/06/2021

Highlighted data  
reflects the most  
recent changes

Operator Name: DEVON ENERGY PRODUCTION COMPANY LP

Well Name: RED BULL 29-20 FED

Well Number: 5H

[Show Final Text](#)

Well Type: OIL WELL

Well Work Type: Drill

## Section 1 - Geologic Formations

Formation ID	Formation Name	Elevation	True Vertical Depth	Measured Depth	Lithologies	Mineral Resources	Producing Formation
3392873	---	3424	0	0	OTHER : Surface	NONE	N
3392874	RUSTLER	2680	744	744	SANDSTONE	NONE	N
3392875	TOP SALT	2353	1071	1071	SALT	NONE	N
3392883	BASE OF SALT	-950	4374	4374	ANHYDRITE	NONE	N
3392887	DELAWARE	-1203	4627	4627	SHALE	NATURAL GAS, OIL	N
3396701	BRUSHY CANYON	-3485	6909	6909	SANDSTONE	NATURAL GAS, OIL	N
3392872	BONE SPRING 1ST	-5143	8567	8567	LIMESTONE	NATURAL GAS, OIL	N
3392881	BONE SPRING 1ST	-6162	9586	9586	SANDSTONE	NATURAL GAS, OIL	N
3396702	BONE SPRING 2ND	-6735	10159	10159	SANDSTONE	NATURAL GAS, OIL	Y
3396703	BONE SPRING 3RD	-7342	10766	10766	LIMESTONE	NATURAL GAS, OIL	N
3396704	BONE SPRING 3RD	-8077	11501	11501	SANDSTONE	NATURAL GAS, OIL	N

## Section 2 - Blowout Prevention

Pressure Rating (PSI): 5M

Rating Depth: 9966

**Equipment:** BOP/BOPE will be installed per Onshore Oil & Gas Order #2 requirements prior to drilling below surface and intermediate casing, a BOP/BOPE system with the above minimum rating will be installed on the wellhead system. BOP/BOPE will be tested by an independent service company per Onshore Oil & Gas Order #2 requirements and MASP (Maximum Anticipated Surface Pressure) calculations. If the system is upgraded, all the components installed will be functional and tested.

**Requesting Variance?** YES

**Variance request:** A variance is requested for the use of a flexible choke line from the BOP stack to the choke manifold. See attached for specs for hydrostatic test chart.

**Testing Procedure:** A multibowl wellhead may be used. The BOP will be tested per Onshore Order #2 after installation on the surface casing which will cover testing requirements for a maximum of 30 days. If any seal subject to test pressure is



Commitment Runs Deep



Design Plan  
Operation and Maintenance Plan  
Closure Plan

SENM - Closed Loop Systems  
June 2010

## I. Design Plan

Devon uses MI SWACO closed loop system (CLS). The MI SWACO CLS is designed to maintain drill solids at or below 5%. The equipment is arranged to progressively remove solids from the largest to the smallest size. Drilling fluids can thus be reused and savings is realized on mud and disposal costs. Dewatering may be required with the centrifuges to insure removal of ultra fine solids.

The drilling location is constructed to allow storm water to flow to a central sump normally the cellar. This insures no contamination leaves the drilling pad in the event of a spill. Storm water is reused in the mud system or stored in a reserve fluid tank farm until it can be reused. All lubricants, oils, or chemicals are removed immediately from the ground to prevent the contamination of storm water. An oil trap is normally installed on the sump if an oil spill occurs during a storm.

A tank farm is utilized to store drilling fluids including fresh water and brine fluids. The tank farm is constructed on a 20 ml plastic lined, bermed pad to prevent the contamination of the drilling site during a spill. Fluids from other sites may be stored in these tanks for processing by the solids control equipment and reused in the mud system. At the end of the well the fluids are transported from the tank farm to an adjoining well or to the next well for the rig.

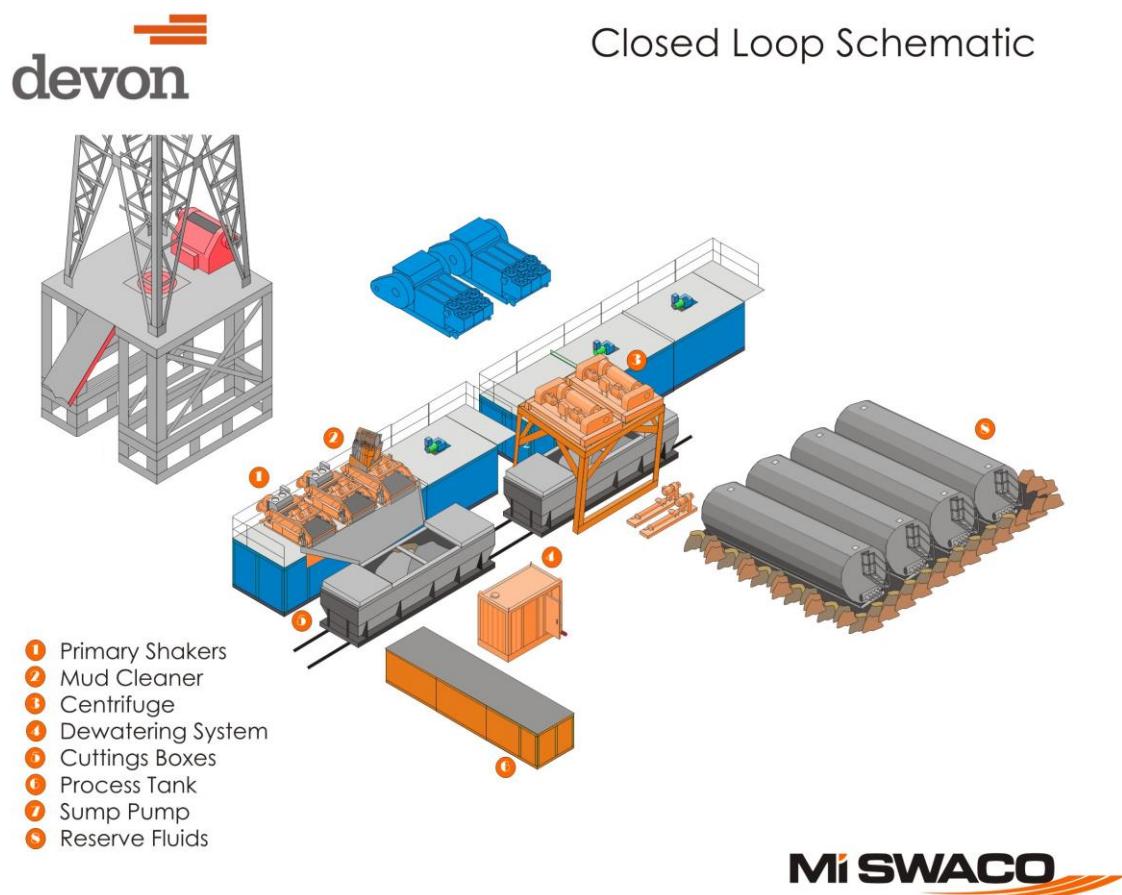
Prior to installing a closed-loop system on site, the topsoil, if present, will be stripped and stockpiled for use as the final cover or fill at the time of closure.

Signs will be posted on the fence surrounding the closed-loop system unless the closed-loop system is located on a site where there is an existing well, that is operated by Devon.

## II. Operations and Maintenance Plan

**Primary Shakers:** The primary shakers make the first removal of drill solids from the drilling mud as it leaves the well bore. The shakers are sized to handle maximum drilling rate at optimal screen size. The shakers normally remove solids down to 74 microns.

**Mud Cleaner:** The Mud Cleaner cleans the fluid after it leaves the shakers. A set of hydrocyclones are sized to handle 1.25 to 1.5 times the maximum circulating rate. This ensures all the fluid is being processed to an average cut point of 25 microns. The wet discharged is dewatered on a shaker equipped with ultra fine mesh screens and generally cut at 40 microns.



**Centrifuges:** The centrifuges can be one or two in number depending on the well geometry or depth of well. The centrifuges are sized to maintain low gravity solids at 5% or below. They may or may not need a dewatering system to enhance the removal rates. The centrifuges can make a cut point of 8-10 microns depending on bowl speed, feed rate, solids loading and other factors.

The centrifuge system is designed to work on the active system and be flexible to process incoming fluids from other locations. This set-up is also dependant on well factors.

**Dewatering System:** The dewatering system is a chemical mixing and dosing system designed to enhance the solids removal of the centrifuge. Not commonly used in shallow wells. It may contain pH adjustment, coagulant mixing and dosing, and polymer mixing and dosing. Chemical flocculation binds ultra fine solids into a mass that is within the centrifuge operating design. The

dewatering system improves the centrifuge cut point to infinity or allows for the return of clear water or brine fluid. This ability allows for the ultimate control of low gravity solids.

*Cuttings Boxes:* Cuttings boxes are utilized to capture drill solids that are discarded from the solids control equipment. These boxes are set upon a rail system that allows for the removal and replacement of a full box of cuttings with an empty one. They are equipped with a cover that insures no product is spilled into the environment during the transportation phase.

*Process Tank:* (Optional) The process tank allows for the holding and process of fluids that are being transferred into the mud system. Additionally, during times of lost circulation the process tank may hold active fluids that are removed for additional treatment. It can further be used as a mixing tank during well control conditions.

*Sump and Sump Pump:* The sump is used to collect storm water and the pump is used to transfer this fluid to the active system or to the tank for to hold in reserve. It can also be used to collect fluids that may escape during spills. The location contains drainage ditches that allow the location fluids to drain to the sump.

*Reserve Fluids (Tank Farm):* A series of frac tanks are used to replace the reserve pit. These are steel tanks that are equipped with a manifold system and a transfer pump. These tanks can contain any number of fluids used during the drilling process. These can include fresh water, cut brine, and saturated salt fluid. The fluid can be from the active well or reclaimed fluid from other locations. A 20 ml liner and berm system is employed to ensure the fluids do not migrate to the environment during a spill.

If a leak develops, the appropriate division district office will be notified within 48 hours of the discovery and the leak will be addressed. Spill prevention is accomplished by maintaining pump packing, hoses, and pipe fittings to insure no leaks are occurring. During an upset condition the source of the spill is isolated and repaired as soon as it is discovered. Free liquid is removed by a diaphragm pump and returned to the mud system. Loose topsoil may be used to stabilize the spill and the contaminated soil is excavated and placed in the cuttings boxes. After the well is finished and the rig has moved, the entire location is scrapped and testing will be performed to determine if a release has occurred.

All trash is kept in a wire mesh enclosure and removed to an approved landfill when full. All spent motor oils are kept in separate containers and they are removed and sent to an approved recycling center. Any spilled lubricants, pipe

dope, or regulated chemicals are removed from soil and sent to landfills approved for these products.

These operations are monitored by Mi Swaco service technicians. Daily logs are maintained to ensure optimal equipment operation and maintenance. Screen and chemical use is logged to maintain inventory control. Fluid properties are monitored and recorded and drilling mud volumes are accounted for in the mud storage farm. This data is kept for end of well review to insure performance goals are met. Lessons learned are logged and used to help with continuous improvement.

A MI SWACO field supervisor manages from 3-5 wells. They are responsible for training personnel, supervising installations, and inspecting sites for compliance of MI SWACO safety and operational policy.

### **III. Closure Plan**

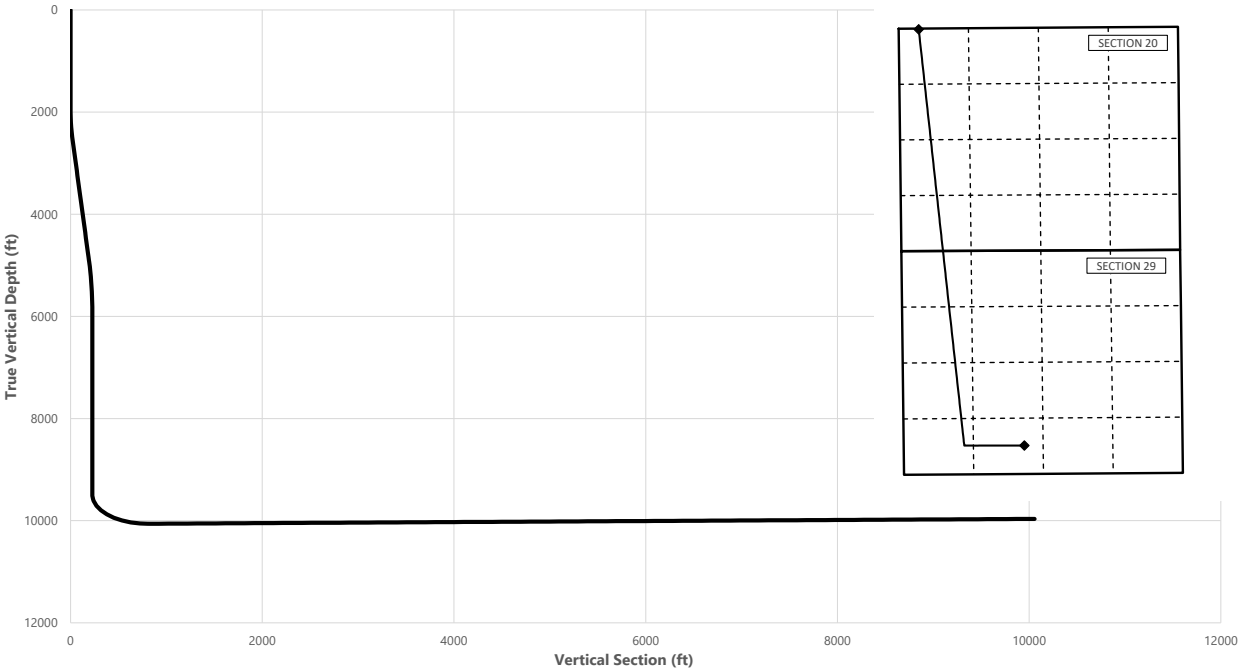
A maximum 340' X 340' caliche pad is built per well. All of the trucks and steel tanks fit on this pad. All fluid cuttings go to the steel tanks to be hauled by various trucking companies to an agency approved disposal.



**Well:** Red Bull 29-20 Fed 5H  
**County:** Lea  
**Wellbore:** Permit Plan  
**Design:** Permit Plan #1

**Geodetic System:** US State Plane 1983  
**Datum:** North American Datum 1927  
**Ellipsoid:** Clarke 1866  
**Zone:** 3001 - NM East (NAD83)

MD	INC	AZI	TVD	NS	EW	VS	DLS	Comment
(ft)	(°)	(°)	(ft)	(ft)	(ft)	(ft)	(°/100ft)	
0.00	0.00	0.00	0.00	0.00	0.00	0.00	0.00	SHL
2000.00	0.00	270.00	2000.00	0.00	0.00	0.00	0.00	Start Tangent
2500.00	20.00	270.00	2489.91	0.00	-86.38	17.19	1.00	Hold Tangent
5073.40	20.00	270.00	4908.12	0.00	-966.54	192.36	0.00	Drop to Vertical
6073.40	0.00	270.00	5887.93	0.00	-1139.31	226.75	2.00	Hold Vertical
9672.54	0.00	355.00	9487.07	0.00	-1139.31	226.75	0.00	KOP
10578.39	90.58	355.00	10060.00	576.60	-1189.75	801.85	10.00	Landing Point
19893.46	90.58	355.00	9965.00	9855.75	-2001.57	10056.94	0.00	BHL



Key Depths	MD	TVD
	(ft)	(ft)
Rustler	0.00	0.00
Salt	1071.00	1071.00
Base of Salt	4505.01	4374.00
Delaware	4774.25	4627.00
Brushy Canyon	7094.47	6909.00
1st Bone Spring Lime	8752.47	8567.00
Bone Spring 1st / Point of Penetratic	9771.97	9586.00
exit	19813.46	9965.83

**SHL**  
**KOP**  
**Point of Penetration**  
**Exit**  
**BHL**

MD	TVD	Lat	Long	Section Footages
(ft)	(ft)	(°)	(°)	
0.00	0.00	32.2701	-103.3909	670' FSL, 2285' FWL of Sec 29 in T23S, R35E
9672.54	9487.07	32.2701	-103.3945	680' FSL, 1147' FWL of Sec 29 in T23S, R35E
9771.97	9586.00	32.2686	-103.3969	100' FSL, 380' FWL of Sec 29 in T23S, R35E
19813.46	9965.83	32.2971	-103.3970	100' FNL, 380' FWL of Sec 20 in T23S, R35E
19893.46	9965.00	32.2972	-103.3971	20' FNL, 380' FWL of Sec 20 in T23S, R35E

Red Bull 29-20 Fed 5H



**Well:** Red Bull 29-20 Fed 5H  
**County:** Lea  
**Wellbore:** Permit Plan  
**Design:** Permit Plan #1

**Geodetic System:** US State Plane 1983  
**Datum:** North American Datum 1927  
**Ellipsoid:** Clarke 1866  
**Zone:** 3001 - NM East (NAD83)

MD	INC	AZI	TVD	NS	EW	VS	DLS	Comment
(ft)	(°)	(°)	(ft)	(ft)	(ft)	(ft)	(°/100ft)	
0.00	0.00	0.00	0.00	0.00	0.00	0.00	0.00	SHL
100.00	0.00	270.00	100.00	0.00	0.00	0.00	0.00	
200.00	0.00	270.00	200.00	0.00	0.00	0.00	0.00	
300.00	0.00	270.00	300.00	0.00	0.00	0.00	0.00	
400.00	0.00	270.00	400.00	0.00	0.00	0.00	0.00	
500.00	0.00	270.00	500.00	0.00	0.00	0.00	0.00	
600.00	0.00	270.00	600.00	0.00	0.00	0.00	0.00	
700.00	0.00	270.00	700.00	0.00	0.00	0.00	0.00	
744.00	0.00	270.00	744.00	0.00	0.00	0.00	0.00	Rustler
800.00	0.00	270.00	800.00	0.00	0.00	0.00	0.00	
900.00	0.00	270.00	900.00	0.00	0.00	0.00	0.00	
1000.00	0.00	270.00	1000.00	0.00	0.00	0.00	0.00	
1071.00	0.00	270.00	1071.00	0.00	0.00	0.00	0.00	Salt
1100.00	0.00	270.00	1100.00	0.00	0.00	0.00	0.00	
1200.00	0.00	270.00	1200.00	0.00	0.00	0.00	0.00	
1300.00	0.00	270.00	1300.00	0.00	0.00	0.00	0.00	
1400.00	0.00	270.00	1400.00	0.00	0.00	0.00	0.00	
1500.00	0.00	270.00	1500.00	0.00	0.00	0.00	0.00	
1600.00	0.00	270.00	1600.00	0.00	0.00	0.00	0.00	
1700.00	0.00	270.00	1700.00	0.00	0.00	0.00	0.00	
1800.00	0.00	270.00	1800.00	0.00	0.00	0.00	0.00	
1900.00	0.00	270.00	1900.00	0.00	0.00	0.00	0.00	
2000.00	0.00	270.00	2000.00	0.00	0.00	0.00	0.00	Start Tangent
2100.00	4.00	270.00	2099.92	0.00	-3.49	0.69	4.00	
2200.00	8.00	270.00	2199.35	0.00	-13.94	2.77	4.00	
2300.00	12.00	270.00	2297.81	0.00	-31.30	6.23	4.00	
2400.00	16.00	270.00	2394.82	0.00	-55.49	11.04	4.00	
2500.00	20.00	270.00	2489.91	0.00	-86.38	17.19	1.00	Hold Tangent
2600.00	20.00	270.00	2583.88	0.00	-120.59	24.00	0.00	
2700.00	20.00	270.00	2677.85	0.00	-154.79	30.81	0.00	
2800.00	20.00	270.00	2771.82	0.00	-188.99	37.61	0.00	
2900.00	20.00	270.00	2865.78	0.00	-223.19	44.42	0.00	
3000.00	20.00	270.00	2959.75	0.00	-257.39	51.23	0.00	
3100.00	20.00	270.00	3053.72	0.00	-291.60	58.03	0.00	
3200.00	20.00	270.00	3147.69	0.00	-325.80	64.84	0.00	
3300.00	20.00	270.00	3241.66	0.00	-360.00	71.65	0.00	
3400.00	20.00	270.00	3335.63	0.00	-394.20	78.45	0.00	
3500.00	20.00	270.00	3429.60	0.00	-428.40	85.26	0.00	
3600.00	20.00	270.00	3523.57	0.00	-462.61	92.07	0.00	
3700.00	20.00	270.00	3617.54	0.00	-496.81	98.88	0.00	
3800.00	20.00	270.00	3711.51	0.00	-531.01	105.68	0.00	
3900.00	20.00	270.00	3805.48	0.00	-565.21	112.49	0.00	
4000.00	20.00	270.00	3899.45	0.00	-599.41	119.30	0.00	
4100.00	20.00	270.00	3993.42	0.00	-633.62	126.10	0.00	
4200.00	20.00	270.00	4087.39	0.00	-667.82	132.91	0.00	
4300.00	20.00	270.00	4181.35	0.00	-702.02	139.72	0.00	
4400.00	20.00	270.00	4275.32	0.00	-736.22	146.52	0.00	
4500.00	20.00	270.00	4369.29	0.00	-770.42	153.33	0.00	
4505.01	20.00	270.00	4374.00	0.00	-772.14	153.67	0.00	Base of Salt
4600.00	20.00	270.00	4463.26	0.00	-804.63	160.14	0.00	
4700.00	20.00	270.00	4557.23	0.00	-838.83	166.94	0.00	
4774.25	20.00	270.00	4627.00	0.00	-864.22	172.00	0.00	Delaware
4800.00	20.00	270.00	4651.20	0.00	-873.03	173.75	0.00	
4900.00	20.00	270.00	4745.17	0.00	-907.23	180.56	0.00	
5000.00	20.00	270.00	4839.14	0.00	-941.43	187.37	0.00	
5073.40	20.00	270.00	4908.12	0.00	-966.54	192.36	0.00	Drop to Vertical
5100.00	19.47	270.00	4933.15	0.00	-975.52	194.15	2.00	
5200.00	17.47	270.00	5028.00	0.00	-1007.20	200.46	2.00	
5300.00	15.47	270.00	5123.89	0.00	-1035.54	206.10	2.00	
5400.00	13.47	270.00	5220.71	0.00	-1060.53	211.07	2.00	
5500.00	11.47	270.00	5318.35	0.00	-1082.11	215.37	2.00	
5600.00	9.47	270.00	5416.68	0.00	-1100.28	218.98	2.00	
5700.00	7.47	270.00	5515.58	0.00	-1115.01	221.91	2.00	
5800.00	5.47	270.00	5614.94	0.00	-1126.27	224.16	2.00	
5900.00	3.47	270.00	5714.63	0.00	-1134.06	225.71	2.00	
6000.00	1.47	270.00	5814.54	0.00	-1138.37	226.56	2.00	
6073.40	0.00	270.00	5887.93	0.00	-1139.31	226.75	2.00	Hold Vertical
6100.00	0.00	355.00	5914.53	0.00	-1139.31	226.75	0.00	
6200.00	0.00	355.00	6014.53	0.00	-1139.31	226.75	0.00	
6300.00	0.00	355.00	6114.53	0.00	-1139.31	226.75	0.00	

Red Bull 29-20 Fed 5H



**Well:** Red Bull 29-20 Fed 5H  
**County:** Lea  
**Wellbore:** Permit Plan  
**Design:** Permit Plan #1

**Geodetic System:** US State Plane 1983  
**Datum:** North American Datum 1927  
**Ellipsoid:** Clarke 1866  
**Zone:** 3001 - NM East (NAD83)

MD (ft)	INC (°)	AZI (°)	TVD (ft)	NS (ft)	EW (ft)	VS (ft)	DLS (°/100ft)	Comment
6400.00	0.00	355.00	6214.53	0.00	-1139.31	226.75	0.00	
6500.00	0.00	355.00	6314.53	0.00	-1139.31	226.75	0.00	
6600.00	0.00	355.00	6414.53	0.00	-1139.31	226.75	0.00	
6700.00	0.00	355.00	6514.53	0.00	-1139.31	226.75	0.00	
6800.00	0.00	355.00	6614.53	0.00	-1139.31	226.75	0.00	
6900.00	0.00	355.00	6714.53	0.00	-1139.31	226.75	0.00	
7000.00	0.00	355.00	6814.53	0.00	-1139.31	226.75	0.00	
7094.47	0.00	355.00	6909.00	0.00	-1139.31	226.75	0.00	Brushy Canyon
7100.00	0.00	355.00	6914.53	0.00	-1139.31	226.75	0.00	
7200.00	0.00	355.00	7014.53	0.00	-1139.31	226.75	0.00	
7300.00	0.00	355.00	7114.53	0.00	-1139.31	226.75	0.00	
7400.00	0.00	355.00	7214.53	0.00	-1139.31	226.75	0.00	
7500.00	0.00	355.00	7314.53	0.00	-1139.31	226.75	0.00	
7600.00	0.00	355.00	7414.53	0.00	-1139.31	226.75	0.00	
7700.00	0.00	355.00	7514.53	0.00	-1139.31	226.75	0.00	
7800.00	0.00	355.00	7614.53	0.00	-1139.31	226.75	0.00	
7900.00	0.00	355.00	7714.53	0.00	-1139.31	226.75	0.00	
8000.00	0.00	355.00	7814.53	0.00	-1139.31	226.75	0.00	
8100.00	0.00	355.00	7914.53	0.00	-1139.31	226.75	0.00	
8200.00	0.00	355.00	8014.53	0.00	-1139.31	226.75	0.00	
8300.00	0.00	355.00	8114.53	0.00	-1139.31	226.75	0.00	
8400.00	0.00	355.00	8214.53	0.00	-1139.31	226.75	0.00	
8500.00	0.00	355.00	8314.53	0.00	-1139.31	226.75	0.00	
8600.00	0.00	355.00	8414.53	0.00	-1139.31	226.75	0.00	
8700.00	0.00	355.00	8514.53	0.00	-1139.31	226.75	0.00	
8752.47	0.00	355.00	8567.00	0.00	-1139.31	226.75	0.00	1st Bone Spring Lime
8800.00	0.00	355.00	8614.53	0.00	-1139.31	226.75	0.00	
8900.00	0.00	355.00	8714.53	0.00	-1139.31	226.75	0.00	
9000.00	0.00	355.00	8814.53	0.00	-1139.31	226.75	0.00	
9100.00	0.00	355.00	8914.53	0.00	-1139.31	226.75	0.00	
9200.00	0.00	355.00	9014.53	0.00	-1139.31	226.75	0.00	
9300.00	0.00	355.00	9114.53	0.00	-1139.31	226.75	0.00	
9400.00	0.00	355.00	9214.53	0.00	-1139.31	226.75	0.00	
9500.00	0.00	355.00	9314.53	0.00	-1139.31	226.75	0.00	
9600.00	0.00	355.00	9414.53	0.00	-1139.31	226.75	0.00	
9672.54	0.00	355.00	9487.07	0.00	-1139.31	226.75	0.00	KOP
9700.00	2.75	355.00	9514.52	0.66	-1139.36	227.40	10.00	
9771.97	9.94	355.00	9586.00	8.57	-1140.06	235.30	10.00	Bone Spring 1st / Point of Penetration
9800.00	12.75	355.00	9613.48	14.06	-1140.54	240.78	10.00	
9900.00	22.75	355.00	9708.60	44.39	-1143.19	271.03	10.00	
10000.00	32.75	355.00	9796.99	90.71	-1147.24	317.22	10.00	
10100.00	42.75	355.00	9875.96	151.61	-1152.57	377.97	10.00	
10200.00	52.75	355.00	9943.12	225.25	-1159.02	451.42	10.00	
10300.00	62.75	355.00	9996.42	309.39	-1166.38	535.34	10.00	
10400.00	72.75	355.00	10034.25	401.48	-1174.43	627.19	10.00	
10500.00	82.75	355.00	10055.44	498.70	-1182.94	724.16	10.00	
10578.39	90.58	355.00	10060.00	576.60	-1189.75	801.85	10.00	Landing Point
10600.00	90.58	355.00	10059.78	598.13	-1191.64	823.33	0.00	
10700.00	90.58	355.00	10058.76	697.74	-1200.35	922.68	0.00	
10800.00	90.58	355.00	10057.74	797.36	-1209.07	1022.04	0.00	
10900.00	90.58	355.00	10056.72	896.97	-1217.78	1121.40	0.00	
11000.00	90.58	355.00	10055.70	996.59	-1226.50	1220.75	0.00	
11100.00	90.58	355.00	10054.68	1096.20	-1235.22	1320.11	0.00	
11200.00	90.58	355.00	10053.66	1195.81	-1243.93	1419.46	0.00	
11300.00	90.58	355.00	10052.64	1295.43	-1252.65	1518.82	0.00	
11400.00	90.58	355.00	10051.62	1395.04	-1261.36	1618.18	0.00	
11500.00	90.58	355.00	10050.60	1494.66	-1270.08	1717.53	0.00	
11600.00	90.58	355.00	10049.58	1594.27	-1278.79	1816.89	0.00	
11700.00	90.58	355.00	10048.56	1693.89	-1287.51	1916.24	0.00	
11800.00	90.58	355.00	10047.54	1793.50	-1296.22	2015.60	0.00	
11900.00	90.58	355.00	10046.52	1893.11	-1304.94	2114.96	0.00	
12000.00	90.58	355.00	10045.50	1992.73	-1313.66	2214.31	0.00	
12100.00	90.58	355.00	10044.48	2092.34	-1322.37	2313.67	0.00	
12200.00	90.58	355.00	10043.46	2191.96	-1331.09	2413.02	0.00	
12300.00	90.58	355.00	10042.44	2291.57	-1339.80	2512.38	0.00	
12400.00	90.58	355.00	10041.42	2391.18	-1348.52	2611.74	0.00	
12500.00	90.58	355.00	10040.40	2490.80	-1357.23	2711.09	0.00	
12600.00	90.58	355.00	10039.39	2590.41	-1365.95	2810.45	0.00	
12700.00	90.58	355.00	10038.37	2690.03	-1374.67	2909.81	0.00	
12800.00	90.58	355.00	10037.35	2789.64	-1383.38	3009.16	0.00	

Red Bull 29-20 Fed 5H



**Well:** Red Bull 29-20 Fed 5H  
**County:** Lea  
**Wellbore:** Permit Plan  
**Design:** Permit Plan #1

**Geodetic System:** US State Plane 1983  
**Datum:** North American Datum 1927  
**Ellipsoid:** Clarke 1866  
**Zone:** 3001 - NM East (NAD83)

MD (ft)	INC (")	AZI (")	TVD (ft)	NS (ft)	EW (ft)	VS (ft)	DLS (°/100ft)	Comment
12900.00	90.58	355.00	10036.33	2889.26	-1392.10	3108.52	0.00	
13000.00	90.58	355.00	10035.31	2988.87	-1400.81	3207.87	0.00	
13100.00	90.58	355.00	10034.29	3088.48	-1409.53	3307.23	0.00	
13200.00	90.58	355.00	10033.27	3188.10	-1418.24	3406.59	0.00	
13300.00	90.58	355.00	10032.25	3287.71	-1426.96	3505.94	0.00	
13400.00	90.58	355.00	10031.23	3387.33	-1435.68	3605.30	0.00	
13500.00	90.58	355.00	10030.21	3486.94	-1444.39	3704.65	0.00	
13600.00	90.58	355.00	10029.19	3586.56	-1453.11	3804.01	0.00	
13700.00	90.58	355.00	10028.17	3686.17	-1461.82	3903.37	0.00	
13800.00	90.58	355.00	10027.15	3785.78	-1470.54	4002.72	0.00	
13900.00	90.58	355.00	10026.13	3885.40	-1479.25	4102.08	0.00	
14000.00	90.58	355.00	10025.11	3985.01	-1487.97	4201.43	0.00	
14100.00	90.58	355.00	10024.09	4084.63	-1496.68	4300.79	0.00	
14200.00	90.58	355.00	10023.07	4184.24	-1505.40	4400.15	0.00	
14300.00	90.58	355.00	10022.05	4283.86	-1514.12	4499.50	0.00	
14400.00	90.58	355.00	10021.03	4383.47	-1522.83	4598.86	0.00	
14500.00	90.58	355.00	10020.01	4483.08	-1531.55	4698.21	0.00	
14600.00	90.58	355.00	10018.99	4582.70	-1540.26	4797.57	0.00	
14700.00	90.58	355.00	10017.97	4682.31	-1548.98	4896.93	0.00	
14800.00	90.58	355.00	10016.95	4781.93	-1557.69	4996.28	0.00	
14900.00	90.58	355.00	10015.93	4881.54	-1566.41	5095.64	0.00	
15000.00	90.58	355.00	10014.91	4981.16	-1575.13	5194.99	0.00	
15100.00	90.58	355.00	10013.89	5080.77	-1583.84	5294.35	0.00	
15200.00	90.58	355.00	10012.87	5180.38	-1592.56	5393.71	0.00	
15300.00	90.58	355.00	10011.85	5280.00	-1601.27	5493.06	0.00	
15400.00	90.58	355.00	10010.83	5379.61	-1609.99	5592.42	0.00	
15500.00	90.58	355.00	10009.81	5479.23	-1618.70	5691.77	0.00	
15600.00	90.58	355.00	10008.79	5578.84	-1627.42	5791.13	0.00	
15700.00	90.58	355.00	10007.77	5678.45	-1636.13	5890.49	0.00	
15800.00	90.58	355.00	10006.75	5778.07	-1644.85	5989.84	0.00	
15900.00	90.58	355.00	10005.73	5877.68	-1653.57	6089.20	0.00	
16000.00	90.58	355.00	10004.71	5977.30	-1662.28	6188.55	0.00	
16100.00	90.58	355.00	10003.70	6076.91	-1671.00	6287.91	0.00	
16200.00	90.58	355.00	10002.68	6176.53	-1679.71	6387.27	0.00	
16300.00	90.58	355.00	10001.66	6276.14	-1688.43	6486.62	0.00	
16400.00	90.58	355.00	10000.64	6375.75	-1697.14	6585.98	0.00	
16500.00	90.58	355.00	9999.62	6475.37	-1705.86	6685.33	0.00	
16600.00	90.58	355.00	9998.60	6574.98	-1714.58	6784.69	0.00	
16700.00	90.58	355.00	9997.58	6674.60	-1723.29	6884.05	0.00	
16800.00	90.58	355.00	9996.56	6774.21	-1732.01	6983.40	0.00	
16900.00	90.58	355.00	9995.54	6873.83	-1740.72	7082.76	0.00	
17000.00	90.58	355.00	9994.52	6973.44	-1749.44	7182.11	0.00	
17100.00	90.58	355.00	9993.50	7073.05	-1758.15	7281.47	0.00	
17200.00	90.58	355.00	9992.48	7172.67	-1766.87	7380.83	0.00	
17300.00	90.58	355.00	9991.46	7272.28	-1775.59	7480.18	0.00	
17400.00	90.58	355.00	9990.44	7371.90	-1784.30	7579.54	0.00	
17500.00	90.58	355.00	9989.42	7471.51	-1793.02	7678.89	0.00	
17600.00	90.58	355.00	9988.40	7571.13	-1801.73	7778.25	0.00	
17700.00	90.58	355.00	9987.38	7670.74	-1810.45	7877.61	0.00	
17800.00	90.58	355.00	9986.36	7770.35	-1819.16	7976.96	0.00	
17900.00	90.58	355.00	9985.34	7869.97	-1827.88	8076.32	0.00	
18000.00	90.58	355.00	9984.32	7969.58	-1836.59	8175.67	0.00	
18100.00	90.58	355.00	9983.30	8069.20	-1845.31	8275.03	0.00	
18200.00	90.58	355.00	9982.28	8168.81	-1854.03	8374.39	0.00	
18300.00	90.58	355.00	9981.26	8268.43	-1862.74	8473.74	0.00	
18400.00	90.58	355.00	9980.24	8368.04	-1871.46	8573.10	0.00	
18500.00	90.58	355.00	9979.22	8467.65	-1880.17	8672.45	0.00	
18600.00	90.58	355.00	9978.20	8567.27	-1888.89	8771.81	0.00	
18700.00	90.58	355.00	9977.18	8666.88	-1897.60	8871.17	0.00	
18800.00	90.58	355.00	9976.16	8766.50	-1906.32	8970.52	0.00	
18900.00	90.58	355.00	9975.14	8866.11	-1915.04	9069.88	0.00	
19000.00	90.58	355.00	9974.12	8965.72	-1923.75	9169.23	0.00	
19100.00	90.58	355.00	9973.10	9065.34	-1932.47	9268.59	0.00	
19200.00	90.58	355.00	9972.08	9164.95	-1941.18	9367.95	0.00	
19300.00	90.58	355.00	9971.06	9264.57	-1949.90	9467.30	0.00	
19400.00	90.58	355.00	9970.04	9364.18	-1958.61	9566.66	0.00	
19500.00	90.58	355.00	9969.02	9463.80	-1967.33	9666.02	0.00	
19600.00	90.58	355.00	9968.00	9563.41	-1976.04	9765.37	0.00	
19700.00	90.58	355.00	9966.99	9663.02	-1984.76	9864.73	0.00	
19800.00	90.58	355.00	9965.97	9762.64	-1993.48	9964.08	0.00	



**Well:** Red Bull 29-20 Fed 5H  
**County:** Lea  
**Wellbore:** Permit Plan  
**Design:** Permit Plan #1

**Geodetic System:** US State Plane 1983  
**Datum:** North American Datum 1927  
**Ellipsoid:** Clarke 1866  
**Zone:** 3001 - NM East (NAD83)

MD	INC	AZI	TVD	NS	EW	VS	DLS	Comment
(ft)	(°)	(°)	(ft)	(ft)	(ft)	(ft)	(°/100ft)	
19813.46	90.58	355.00	9965.83	9776.05	-1994.65	9977.46	0.00	exit
19893.46	90.58	355.00	9965.00	9855.75	-2001.57	10056.94	0.00	BHL

Red Bull 29-20 Fed 5H

**Well:** Red Bull 29-20 Fed 5H

**County:** Lea

**Wellbore:** Permit Plan

**Design:** Permit Plan #1

**Geodetic System:** US State Plane 1983

**Datum:** North American Datum 1927

**Ellipsoid:** Clarke 1866

**Zone:** 3001 - NM East (NAD83)

MD	INC	AZI	TVD	NS	EW	VS	DLS	Comment
(ft)	(°)	(°)	(ft)	(ft)	(ft)	(ft)	(°/100ft)	

## **Devon Energy**

### **APD VARIANCE DATA**

**OPERATOR NAME:** Devon Energy

#### **1. SUMMARY OF Variance:**

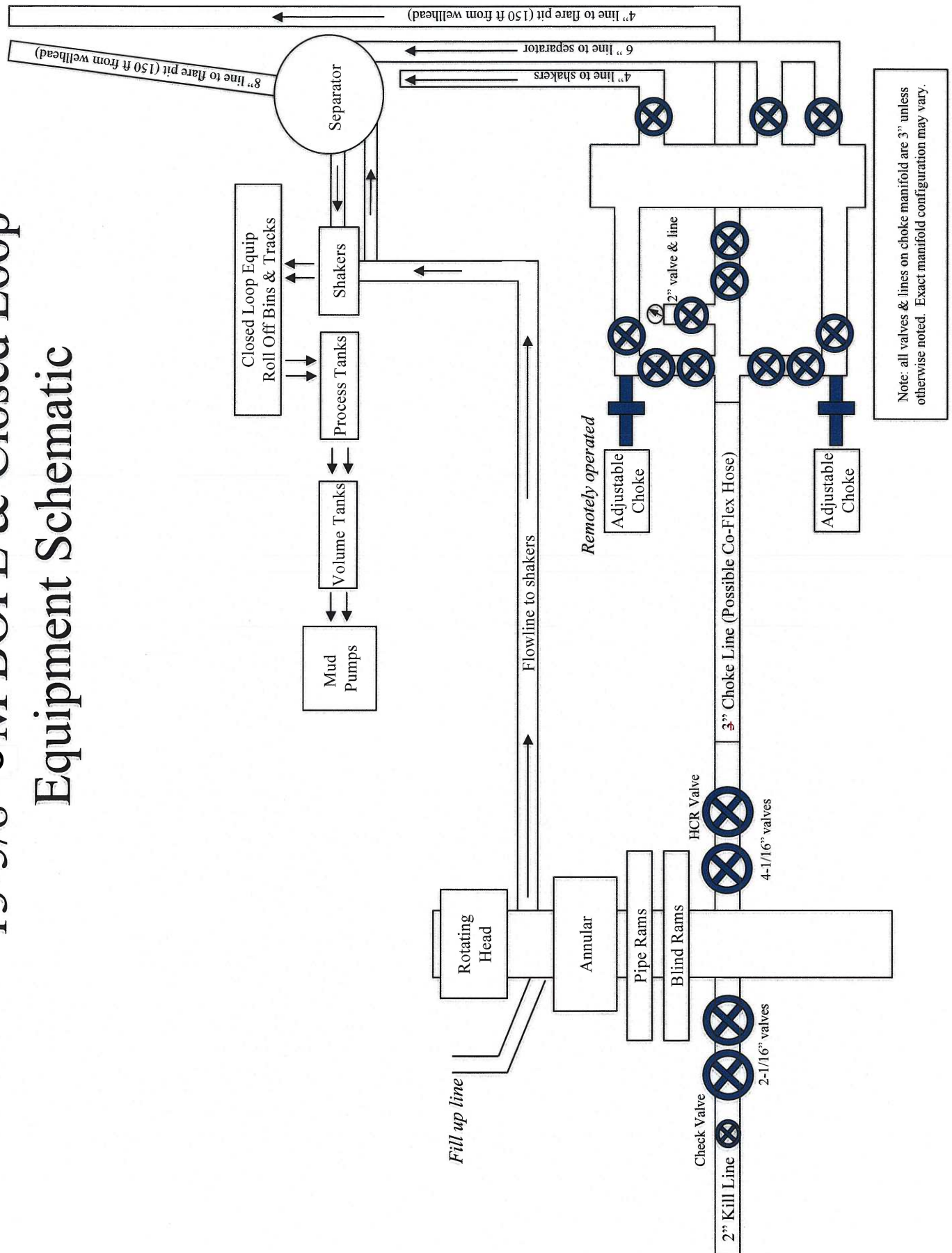
Devon Energy respectfully requests approval for the following additions to the drilling plan:

1. Potential utilization of a spudder rig to pre-set surface casing.

#### **2. Description of Operations**

1. A spudder rig contractor may move in their rig to drill the surface hole section and pre-set surface casing on this well.
  - a. After drilling the surface hole section, the rig will run casing and cement following all of the applicable rules and regulations (OnShore Order 2, all COAs and NMOCD regulations).
  - b. Rig will utilize fresh water based mud to drill surface hole to TD.
2. The wellhead will be installed and tested once the surface casing is cut off and the WOC time has been reached.
3. A blind flange with the same pressure rating as the wellhead will be installed to seal the wellbore. Pressure will be monitored with needle valves installed on two wingvalves.
  - a. A means for intervention will be maintained while the drilling rig is not over the well.
4. The BLM will be contacted and notified 24 hours prior to commencing spudder rig operations.
5. Drilling operation will be performed with the big rig. At that time an approved BOP stack will be nipped up and tested on the wellhead before drilling operations commences on each well.
  - a. The BLM will be contacted / notified 24 hours before the big rig moves back on to the pad with the pre-set surface casing.
6. Devon Energy will have supervision on the rig to ensure compliance with all BLM and NMOCD regulations and to oversee operations.
7. Once the rig is removed, Devon Energy will secure the wellhead area by placing a guard rail around the cellar area.

# 13-5/8" 5M BOPE & Closed Loop Equipment Schematic



A multibowl wellhead may be used. The BOP will be tested per Onshore Order #2 after installation on the surface casing which will cover testing requirements for a maximum of 30 days. If any seal subject to test pressure is broken the system must be tested.

Devon proposes using a multi-bowl wellhead assembly. This assembly will only be tested when installed on the surface casing. Minimum working pressure of the blowout preventer (BOP) and related equipment (BOPE) required for drilling below the surface casing shoe shall be 5000 (5M) psi.

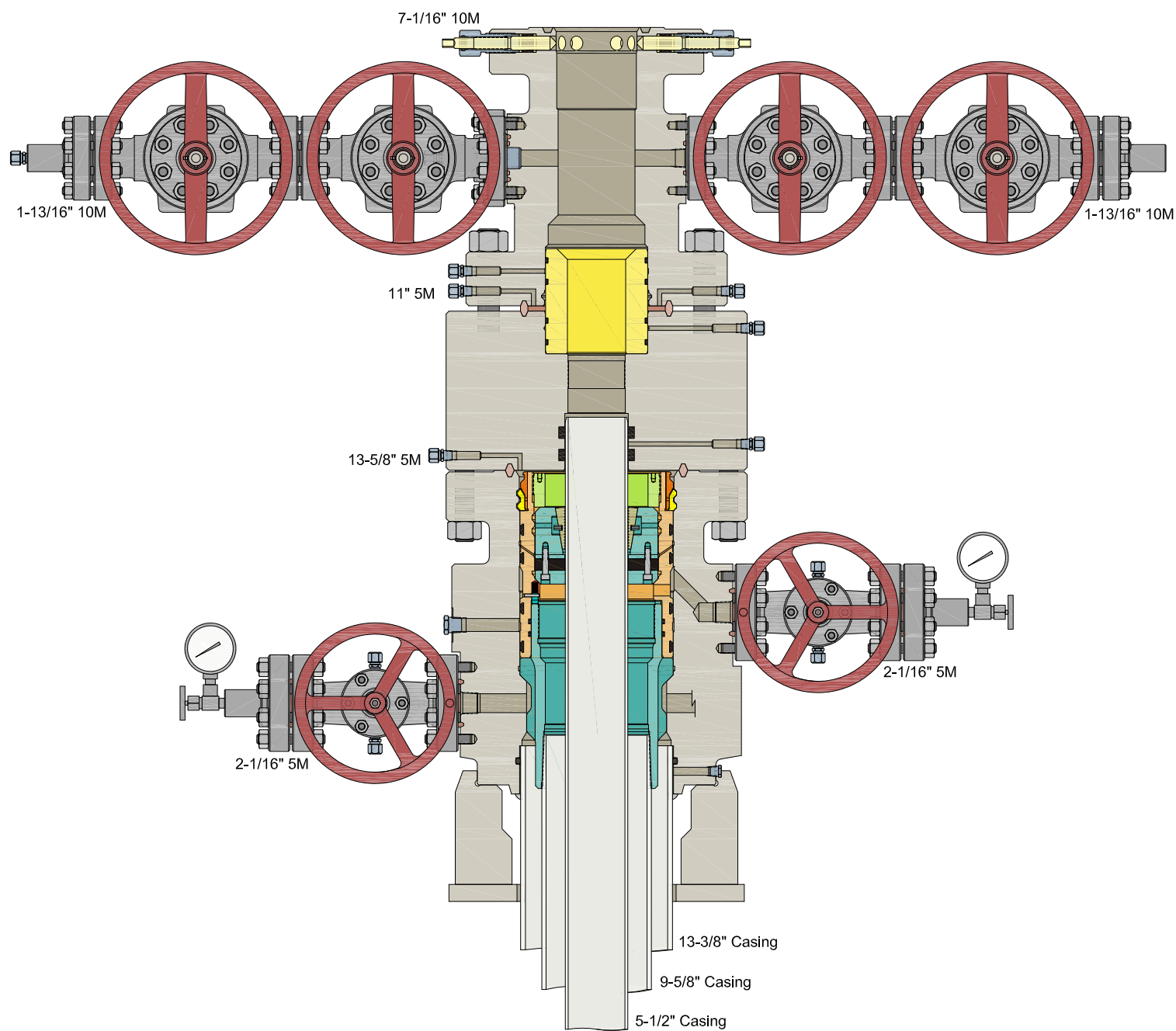
- Wellhead will be installed by wellhead representatives.
- If the welding is performed by a third party, the wellhead representative will monitor the temperature to verify that it does not exceed the maximum temperature of the seal.
- Wellhead representative will install the test plug for the initial BOP test.
- Wellhead company will install a solid steel body pack-off to completely isolate the lower head after cementing intermediate casing. After installation of the pack-off, the pack-off and the lower flange will be tested to 5M, as shown on the attached schematic. Everything above the pack-off will not have been altered whatsoever from the initial nipple up. Therefore the BOP components will not be retested at that time.
- If the cement does not circulate and one inch operations would have been possible with a standard wellhead, the well head will be cut and top out operations will be conducted.
- Devon will pressure test all seals above and below the mandrel (but still above the casing) to full working pressure rating.
- Devon will test the casing to 0.22 psi/ft or 1500 psi, whichever is greater, as per Onshore Order #2.

After running the surface casing, a 13-5/8" BOP/BOPE system with a minimum rating of 5M will be installed on the wellhead system and will undergo a 250 psi low pressure test followed by a 5,000 psi high pressure test. The 5,000 psi high and 250 psi low test will cover testing requirements a maximum of 30 days, as per Onshore Order #2. If the well is not complete within 30 days of this BOP test, another full BOP test will be conducted, as per Onshore Order #2.

After running the intermediate casing with a mandrel hanger, the 13-5/8" BOP/BOPE system with a minimum rating of 5M will already be installed on the wellhead.

The pipe rams will be operated and checked each 24 hour period and each time the drill pipe is out of the hole. These tests will be logged in the daily driller's log. A 2" kill line and 3" choke line will be incorporated into the drilling spool below the ram BOP. In addition to the rams and annular preventer, additional BOP accessories include a kelly cock, floor safety valve, choke lines, and choke manifold rated at 5,000 psi WP.

Devon's proposed wellhead manufactures will be FMC Technologies, Cactus Wellhead, or Cameron.



## PECOS DISTRICT DRILLING CONDITIONS OF APPROVAL

<b>OPERATOR'S NAME:</b>	<b>Devon Energy Production Company LP</b>
<b>LEASE NO.:</b>	<b>NMNM117588</b>
<b>LOCATION:</b>	Section 29, T.23 S., R.35 E., NMPM
<b>COUNTY:</b>	Lea County, New Mexico
<b>Sundry ID:</b>	N/A

<b>WELL NAME &amp; NO.:</b>	<b>Red Bull 29-20 Fed 5H</b>
<b>SURFACE HOLE FOOTAGE:</b>	670'S & 2285'W
<b>BOTTOM HOLE FOOTAGE:</b>	20'N & 380'W

<b>WELL NAME &amp; NO.:</b>	<b>Red Bull 29-20 Fed 6H</b>
<b>SURFACE HOLE FOOTAGE:</b>	670'S & 2315'W
<b>BOTTOM HOLE FOOTAGE:</b>	20'N & 1880'W

<b>WELL NAME &amp; NO.:</b>	<b>Red Bull 29-20 Fed 7H</b>
<b>SURFACE HOLE FOOTAGE:</b>	560'S & 1185'E
<b>BOTTOM HOLE FOOTAGE:</b>	20'N & 1880'E

<b>WELL NAME &amp; NO.:</b>	<b>Red Bull 29-20 Fed 8H</b>
<b>SURFACE HOLE FOOTAGE:</b>	560'S & 1155'E
<b>BOTTOM HOLE FOOTAGE:</b>	20'N & 380'E

COA

H2S	<input type="checkbox"/> Yes	<input checked="" type="checkbox"/> No	
Potash	<input checked="" type="checkbox"/> None	<input type="checkbox"/> Secretary	<input type="checkbox"/> R-111-P
Cave/Karst Potential	<input checked="" type="checkbox"/> Low	<input type="checkbox"/> Medium	<input type="checkbox"/> High
Cave/Karst Potential	<input type="checkbox"/> Critical		
Variance	<input type="checkbox"/> None	<input checked="" type="checkbox"/> Flex Hose	<input type="checkbox"/> Other
Wellhead	<input type="checkbox"/> Conventional	<input type="checkbox"/> Multibowl	<input checked="" type="checkbox"/> Both
Wellhead Variance	<input type="checkbox"/> Diverter		
Other	<input type="checkbox"/> 4 String Area	<input checked="" type="checkbox"/> Capitan Reef	<input type="checkbox"/> WIPP
Other	<input checked="" type="checkbox"/> Fluid Filled	<input type="checkbox"/> Pilot Hole	<input type="checkbox"/> Open Annulus
Cementing	<input checked="" type="checkbox"/> Cement Squeeze	<input type="checkbox"/> EchoMeter	
Special Requirements	<input type="checkbox"/> Water Disposal	<input type="checkbox"/> COM	<input type="checkbox"/> Unit
Special Requirements Variance	<input type="checkbox"/> Break Testing	<input type="checkbox"/> Offline Cementing	

## A. HYDROGEN SULFIDE

Hydrogen Sulfide (H<sub>2</sub>S) monitors shall be installed prior to drilling out the surface shoe. If H<sub>2</sub>S is detected in concentrations greater than 100 ppm, the Hydrogen Sulfide area shall meet Onshore Order 6 requirements, which includes equipment and personnel/public protection items. If Hydrogen Sulfide is encountered, provide measured values and formations to the BLM.

## B. CASING

1. The **13-3/8 inch** surface casing shall be set at approximately **1430 feet** (a minimum of **25 feet (Lea County)** into the Rustler Anhydrite and above the salt) and cemented to the surface.
  - a. If cement does not circulate to the surface, the appropriate BLM office shall be notified and a temperature survey utilizing an electronic type temperature survey with surface log readout will be used or a cement bond log shall be run to verify the top of the cement. Temperature survey will be run a minimum of six hours after pumping cement and ideally between 8-10 hours after completing the cement job.
  - b. Wait on cement (WOC) time for a primary cement job will be a minimum of **8 hours** or 500 pounds compressive strength, whichever is greater. (This is to include the lead cement)
  - c. Wait on cement (WOC) time for a remedial job will be a minimum of 4 hours after bringing cement to surface or 500 pounds compressive strength, whichever is greater.
  - d. If cement falls back, remedial cementing will be done prior to drilling out that string.

**Intermediate casing must be kept fluid filled to meet BLM minimum collapse requirement.**

2. The minimum required fill of cement behind the **9-5/8 inch** intermediate casing is:

### **Option 1 (Single Stage):**

- Cement to surface. If cement does not circulate see B.1.a, c-d above. **Wait on cement (WOC) time for a primary cement job is to include the lead cement slurry due to cave/karst, potash or capitan reef. Cement excess is less than 25%, more cement might be required.**

### **Option 2:**

Operator has proposed a DV tool, the depth may be adjusted as long as the cement is changed proportionally. The DV tool may be cancelled if cement circulates to surface on the first stage.

- a. First stage to DV tool: Cement to circulate. If cement does not circulate off the DV tool, contact the appropriate BLM office before proceeding with second stage cement job.
  - b. Second stage above DV tool:
    - Cement to surface. If cement does not circulate, contact the appropriate BLM office.  
**Wait on cement (WOC) time for a primary cement job is to include the lead cement slurry due to cave/karst, potash or capitan reef. Cement excess is less than 25%, more cement might be required.**
- ❖ In Capitan Reef Areas if cement does not circulate to surface on the first two casing strings, the cement on the 3rd casing string must come to surface.
- ❖ **Special Capitan Reef requirements.** If lost circulation (50% or greater) occurs below the Base of the Salt, the operator shall do the following:
- Switch to fresh water mud to protect the Capitan Reef and use fresh water mud until setting the intermediate casing. The appropriate BLM office is to be notified for a PET to witness the switch to fresh water.
  - Daily drilling reports from the Base of the Salt to the setting of the intermediate casing are to be submitted to the BLM CFO engineering staff via e-mail by 0800 hours each morning. Any lost circulation encountered is to be recorded on these drilling reports. The daily drilling report should show mud volume per shift/tour. Failure to submit these reports will result in an Incidence of Non-Compliance being issued for failure to comply with the Conditions of Approval. If not already planned, the operator shall run a caliper survey for the intermediate well bore and submit to the appropriate BLM office.

**Operator has proposed to pump down 13-3/8" X 9-5/8" annulus after primary cementing stage. Operator must run a CBL from TD of the 9-5/8" casing to surface. Submit results to the BLM.**

**If cement does not tie-back into the previous casing shoe, a third stage remediation BH may be performed. The appropriate BLM office shall be notified.**

3. The minimum required fill of cement behind the **5-1/2** inch production casing is:
  - Cement should tie-back at least **50 feet** on top of Capitan Reef top **or 200 feet** into the previous casing, whichever is greater. If cement does not circulate see B.1.a, c-d above.  
**Wait on cement (WOC) time for a primary cement job is to include the lead cement slurry due to cave/karst, potash or capitan reef. Cement excess is less than 25%, more cement might be required.**

### C. PRESSURE CONTROL

1. Variance approved to use flex line from BOP to choke manifold. Manufacturer's specification to be readily available. No external damage to flex line. Flex line to be installed as straight as possible (no hard bends).'

2.

#### Option 1:

- a. Minimum working pressure of the blowout preventer (BOP) and related equipment (BOPE) required for drilling below the surface casing shoe shall be **5000 (5M)** psi.
- b. Minimum working pressure of the blowout preventer (BOP) and related equipment (BOPE) required for drilling below the **9-5/8** inch intermediate casing shoe shall be **5000 (5M)** psi.

#### Option 2:

Operator has proposed a multi-bowl wellhead assembly. This assembly will only be tested when installed on the **13-3/8** inch surface casing. Minimum working pressure of the blowout preventer (BOP) and related equipment (BOPE) required for drilling below the surface casing shoe shall be **5000 (5M)** psi.

- a. Wellhead shall be installed by manufacturer's representatives, submit documentation with subsequent sundry.
- b. If the welding is performed by a third party, the manufacturer's representative shall monitor the temperature to verify that it does not exceed the maximum temperature of the seal.
- c. Manufacturer representative shall install the test plug for the initial BOP test.
- d. If the cement does not circulate and one inch operations would have been possible with a standard wellhead, the well head shall be cut off, cementing operations performed and another wellhead installed.
- e. Whenever any seal subject to test pressure is broken, all the tests in OOGO2.III.A.2.i must be followed.

## GENERAL REQUIREMENTS

The BLM is to be notified in advance for a representative to witness:

- a. Spudding well (minimum of 24 hours)
- b. Setting and/or Cementing of all casing strings (minimum of 4 hours)
- c. BOPE tests (minimum of 4 hours)

☒ Eddy County

Call the Carlsbad Field Office, 620 East Greene St., Carlsbad, NM 88220,  
(575) 361-2822

☒ Lea County

Call the Hobbs Field Station, 414 West Taylor, Hobbs NM 88240, (575)  
393-3612

1. Unless the production casing has been run and cemented or the well has been properly plugged, the drilling rig shall not be removed from over the hole without prior approval.
  - a. In the event the operator has proposed to drill multiple wells utilizing a skid/walking rig. Operator shall secure the wellbore on the current well, after installing and testing the wellhead, by installing a blind flange of like pressure rating to the wellhead and a pressure gauge that can be monitored while drilling is performed on the other well(s).
  - b. When the operator proposes to set surface casing with Spudder Rig
    - Notify the BLM when moving in and removing the Spudder Rig.
    - Notify the BLM when moving in the 2<sup>nd</sup> Rig. Rig to be moved in within 90 days of notification that Spudder Rig has left the location.
    - BOP/BOPE test to be conducted per Onshore Oil and Gas Order No. 2 as soon as 2nd Rig is rigged up on well.
2. Floor controls are required for 3M or Greater systems. These controls will be on the rig floor, unobstructed, readily accessible to the driller and will be operational at all times during drilling and/or completion activities. Rig floor is defined as the area immediately around the rotary table; the area immediately above the substructure on which the draw works are located, this does not include the dog house or stairway area.
3. The record of the drilling rate along with the GR/N well log run from TD to surface (horizontal well – vertical portion of hole) shall be submitted to the BLM office as well as all other logs run on the borehole 30 days from completion. If available, a digital copy of the logs is to be submitted in addition to the paper copies. The Rustler top and top and bottom of Salt are to be recorded on the Completion Report.

## A. CASING

1. Changes to the approved APD casing program need prior approval if the items substituted are of lesser grade or different casing size or are Non-API. The Operator can exchange the components of the proposal with that of superior strength (i.e. changing from J-55 to N-80, or from 36# to 40#). Changes to the approved cement program need prior approval if the altered cement plan has less volume or strength or if the changes are substantial (i.e. Multistage tool, ECP, etc.). The initial wellhead installed on the well will remain on the well with spools used as needed.
2. Wait on cement (WOC) for Potash Areas: After cementing but before commencing any tests, the casing string shall stand cemented under pressure until both of the following conditions have been met: 1) cement reaches a minimum compressive strength of 500 psi for all cement blends, 2) until cement has been in place at least 24 hours. WOC time will be recorded in the driller's log. The casing integrity test can be done (prior to the cement setting up) immediately after bumping the plug.
3. Wait on cement (WOC) for Water Basin: After cementing but before commencing any tests, the casing string shall stand cemented under pressure until both of the following conditions have been met: 1) cement reaches a minimum compressive strength of 500 psi at the shoe, 2) until cement has been in place at least 8 hours. WOC time will be recorded in the driller's log. See individual casing strings for details regarding lead cement slurry requirements. The casing integrity test can be done (prior to the cement setting up) immediately after bumping the plug.
4. Provide compressive strengths including hours to reach required 500 pounds compressive strength prior to cementing each casing string. Have well specific cement details onsite prior to pumping the cement for each casing string.
5. No pea gravel permitted for remedial or fall back remedial without prior authorization from the BLM engineer.
6. On that portion of any well approved for a 5M BOPE system or greater, a pressure integrity test of each casing shoe shall be performed. Formation at the shoe shall be tested to a minimum of the mud weight equivalent anticipated to control the formation pressure to the next casing depth or at total depth of the well. This test shall be performed before drilling more than 20 feet of new hole.
7. If hardband drill pipe is rotated inside casing, returns will be monitored for metal. If metal is found in samples, drill pipe will be pulled and rubber protectors which have a larger diameter than the tool joints of the drill pipe will be installed prior to continuing drilling operations.
8. Whenever a casing string is cemented in the R-111-P potash area, the NMOCD requirements shall be followed.

## B. PRESSURE CONTROL

1. All blowout preventer (BOP) and related equipment (BOPE) shall comply with well control requirements as described in Onshore Oil and Gas Order No. 2 and API RP 53 Sec. 17.
2. If a variance is approved for a flexible hose to be installed from the BOP to the choke manifold, the following requirements apply: The flex line must meet the requirements of API 16C. Check condition of flexible line from BOP to choke manifold, replace if exterior is damaged or if line fails test. Line to be as straight as possible with no hard bends and is to be anchored according to Manufacturer's requirements. The flexible hose can be exchanged with a hose of equal size and equal or greater pressure rating. Anchor requirements, specification sheet and hydrostatic pressure test certification matching the hose in service, to be onsite for review. These documents shall be posted in the company man's trailer and on the rig floor.
3. 5M or higher system requires an HCR valve, remote kill line and annular to match. The remote kill line is to be installed prior to testing the system and tested to stack pressure.
4. If the operator has proposed a multi-bowl wellhead assembly in the APD. The following requirements must be met:
  - a. Wellhead shall be installed by manufacturer's representatives, submit documentation with subsequent sundry.
  - b. If the welding is performed by a third party, the manufacturer's representative shall monitor the temperature to verify that it does not exceed the maximum temperature of the seal.
  - c. Manufacturer representative shall install the test plug for the initial BOP test.
  - d. Whenever any seal subject to test pressure is broken, all the tests in OOGO2.III.A.2.i must be followed.
  - e. If the cement does not circulate and one inch operations would have been possible with a standard wellhead, the well head shall be cut off, cementing operations performed and another wellhead installed.
5. The appropriate BLM office shall be notified a minimum of 4 hours in advance for a representative to witness the tests.
  - a. In a water basin, for all casing strings utilizing slips, these are to be set as soon as the crew and rig are ready and any fallback cement remediation has been done. The casing cut-off and BOP installation can be initiated four hours after installing the slips, which will be approximately six hours after bumping the plug. For those casing strings not using slips, the minimum wait time before cut-off is eight hours after bumping the plug. BOP/BOPE testing can begin after cut-off or once cement reaches 500 psi compressive strength (including lead when specified), whichever is greater. However, if the float does not

hold, cut-off cannot be initiated until cement reaches 500 psi compressive strength (including lead when specified).

- b. In potash areas, for all casing strings utilizing slips, these are to be set as soon as the crew and rig are ready and any fallback cement remediation has been done. For all casing strings, casing cut-off and BOP installation can be initiated at twelve hours after bumping the plug. However, **no tests** shall commence until the cement has had a minimum of 24 hours setup time, except the casing pressure test can be initiated immediately after bumping the plug (only applies to single stage cement jobs).
- c. The tests shall be done by an independent service company utilizing a test plug not a cup or J-packer. The operator also has the option of utilizing an independent tester to test without a plug (i.e. against the casing) pursuant to Onshore Order 2 with the pressure not to exceed 70% of the burst rating for the casing. Any test against the casing must meet the WOC time for water basin (8 hours) or potash (24 hours) or 500 pounds compressive strength, whichever is greater, prior to initiating the test (see casing segment as lead cement may be critical item).
- d. The test shall be run on a 5000 psi chart for a 2-3M BOP/BOP, on a 10000 psi chart for a 5M BOP/BOPE and on a 15000 psi chart for a 10M BOP/BOPE. If a linear chart is used, it shall be a one hour chart. A circular chart shall have a maximum 2 hour clock. If a twelve hour or twenty-four hour chart is used, tester shall make a notation that it is run with a two hour clock.
- e. The results of the test shall be reported to the appropriate BLM office.
- f. All tests are required to be recorded on a calibrated test chart. A copy of the BOP/BOPE test chart and a copy of independent service company test will be submitted to the appropriate BLM office.
- g. The BOP/BOPE test shall include a low pressure test from 250 to 300 psi. The test will be held for a minimum of 10 minutes if test is done with a test plug and 30 minutes without a test plug. This test shall be performed prior to the test at full stack pressure.
- h. BOP/BOPE must be tested by an independent service company within 500 feet of the top of the Wolfcamp formation if the time between the setting of the intermediate casing and reaching this depth exceeds 20 days. This test does not exclude the test prior to drilling out the casing shoe as per Onshore Order No. 2.

C. DRILLING MUD

Mud system monitoring equipment, with derrick floor indicators and visual and audio alarms, shall be operating before drilling into the Wolfcamp formation, and shall be used until production casing is run and cemented.

D. WASTE MATERIAL AND FLUIDS

All waste (i.e. drilling fluids, trash, salts, chemicals, sewage, gray water, etc.) created as a result of drilling operations and completion operations shall be safely contained and disposed of properly at a waste disposal facility. No waste material or fluid shall be disposed of on the well location or surrounding area.

Porto-johns and trash containers will be on-location during fracturing operations or any other crew-intensive operations.



**Devon Energy Center  
333 West Sheridan Avenue  
Oklahoma City, Oklahoma 73102-5015**

# **Hydrogen Sulfide (H<sub>2</sub>S) Contingency Plan**

**For**

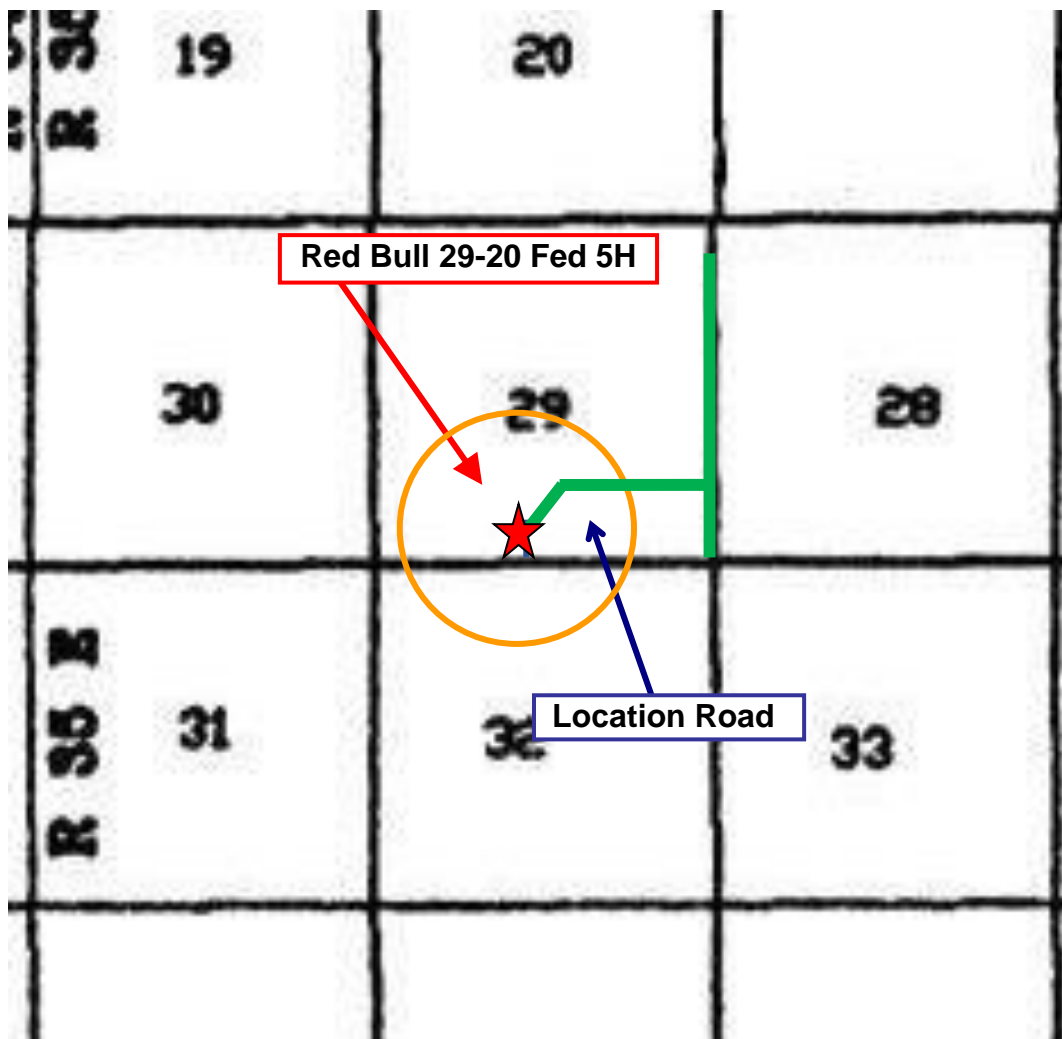
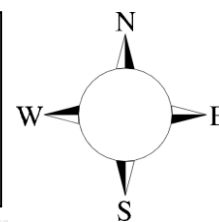
**Red Bull 29-20 Fed 5H**

**Sec-29 T-23S R-35E  
670' FSL & 2285' FWL  
LAT. = 32.270178' N (NAD83)  
LONG = 103.390774' W**

**Lea County NM**

## Red Bull 29-20 Fed 5H

This is an open drilling site. H<sub>2</sub>S monitoring equipment and emergency response equipment will be used within 500' of zones known to contain H<sub>2</sub>S, including warning signs, wind indicators and H<sub>2</sub>S monitor.



Assumed 100 ppm **ROE = 3000'** (Radius of Exposure)  
100 ppm H<sub>2</sub>S concentration shall trigger activation of this plan.

### Escape

Crews shall escape upwind of escaping gas in the event of an emergency release of gas. Escape can be facilitated from the location entrance road. Crews should then block the entrance to the location from the lease road so as not to allow anyone traversing into a hazardous area. The blockade should be at a safe distance outside of the ROE. There are no homes or buildings in or near the ROE.

**Assumed 100 ppm ROE = 3000'**

## 100 ppm H<sub>2</sub>S concentration shall trigger activation of this plan.

### Emergency Procedures

In the event of a release of gas containing H<sub>2</sub>S, the first responder(s) must

- Isolate the area and prevent entry by other persons into the 100 ppm ROE.
- Evacuate any public places encompassed by the 100 ppm ROE.
- Be equipped with H<sub>2</sub>S monitors and air packs in order to control the release.
- Use the “buddy system” to ensure no injuries occur during the response
- Take precautions to avoid personal injury during this operation.
- Contact operator and/or local officials to aid in operation. See list of phone numbers attached.
- Have received training in the
  - Detection of H<sub>2</sub>S, and
  - Measures for protection against the gas,
  - Equipment used for protection and emergency response.

### **Ignition of Gas Source**

Should control of the well be considered lost and ignition considered, take care to protect against exposure to Sulfur Dioxide (SO<sub>2</sub>). Intentional ignition must be coordinated with the NMOCD and local officials. Additionally the NM State Police may become involved. NM State Police shall be the Incident Command on scene of any major release. Take care to protect downwind whenever there is an ignition of the gas

### **Characteristics of H<sub>2</sub>S and SO<sub>2</sub>**

<b>Common Name</b>	<b>Chemical Formula</b>	<b>Specific Gravity</b>	<b>Threshold Limit</b>	<b>Hazardous Limit</b>	<b>Lethal Concentration</b>
<b>Hydrogen Sulfide</b>	H <sub>2</sub> S	1.189 Air = 1	10 ppm	100 ppm/hr	600 ppm
<b>Sulfur Dioxide</b>	SO <sub>2</sub>	2.21 Air = 1	2 ppm	N/A	1000 ppm

### **Contacting Authorities**

Devon Energy Corp. personnel must liaison with local and state agencies to ensure a proper response to a major release. Additionally, the OCD must be notified of the release as soon as possible but no later than 4 hours. Agencies will ask for information such as type and volume of release, wind direction, location of release, etc. Be prepared with all information available. The following call list of essential and potential responders has been prepared for use during a release. Devon Energy Corp. Company response must be in coordination with the State of New Mexico's 'Hazardous Materials Emergency Response Plan' (HMER)

## Hydrogen Sulfide Drilling Operation Plan

### I. HYDROGEN SULFIDE (H<sub>2</sub>S) TRAINING

All personnel, whether regularly assigned, contracted, or employed on an unscheduled basis, will receive training from a qualified instructor in the following areas prior to commencing drilling operations on this well:

1. The hazards and characteristics of hydrogen sulfide (H<sub>2</sub>S)
2. The proper use and maintenance of personal protective equipment and life support systems.
3. The proper use of H<sub>2</sub>S detectors, alarms, warning systems, briefing areas, evacuation procedures, and prevailing winds.
4. The proper techniques for first aid and rescue procedures.

In addition, supervisory personnel will be trained in the following areas:

1. The effects of H<sub>2</sub>S metal components. If high tensile tubulars are to be used, personnel will be trained in their special maintenance requirements.
2. Corrective action and shut-in procedures when drilling or reworking a well and blowout prevention and well control procedures.
3. The contents and requirements of the H<sub>2</sub>S Drilling Operations Plan and Public Protection Plan.

There will be an initial training session just prior to encountering a known or probable H<sub>2</sub>S zone (within 3 days or 500 feet) and weekly H<sub>2</sub>S and well control drills for all personnel in each crew. The initial training session shall include a review of the site specific H<sub>2</sub>S Drilling Operations Plan and the Public Protection Plan.

### II. HYDROGEN SULFIDE TRAINING

Note: All H<sub>2</sub>S safety equipment and systems will be installed, tested, and operational when drilling reaches a depth of 500 feet above, or three days prior to penetrating the first zone containing or reasonably expected to contain H<sub>2</sub>S.

**1. Well Control Equipment**

- A. Flare line
- B. Choke manifold – Remotely Operated
- C. Blind rams and pipe rams to accommodate all pipe sizes with properly sized closing unit
- D. Auxiliary equipment may include if applicable: annular preventer and rotating head.
- E. Mud/Gas Separator

**2. Protective equipment for essential personnel:**

30-minute SCBA units located at briefing areas, as indicated on well site diagram, with escape units available in the top doghouse. As it may be difficult to communicate audibly while wearing these units, hand signals shall be utilized.

**3. H<sub>2</sub>S detection and monitoring equipment:**

Portable H<sub>2</sub>S monitors positioned on location for best coverage and response. These units have warning lights which activate when H<sub>2</sub>S levels reach 10 ppm and audible sirens which activate at 15 ppm. Sensor locations:

- Bell nipple
- Possum Belly/Shale shaker
- Rig floor
- Choke manifold
- Cellar

**Visual warning systems:**

- A. Wind direction indicators as shown on well site diagram
- B. Caution/ Danger signs shall be posted on roads providing direct access to locations. Signs will be painted a high visibility yellow with black lettering of sufficient size to be reasonable distance from the immediate location. Bilingual signs will be used when appropriate.

**4. Mud program:**

The mud program has been designed to minimize the volume of H<sub>2</sub>S circulated to surface. Proper mud weight, safe drilling practices and the use of H<sub>2</sub>S scavengers will minimize hazards when penetrating H<sub>2</sub>S bearing zones.

**5. Metallurgy:**

- A. All drill strings, casings, tubing, wellhead, blowout preventer, drilling spool, kill lines, choke manifold lines, and valves shall be H<sub>2</sub>S trim.
- B. All elastomers used for packing and seals shall be H<sub>2</sub>S trim.

**6. Communication:**

- A. Company personnel have/use cellular telephones in the field.
- B. Land line (telephone) communications at Office

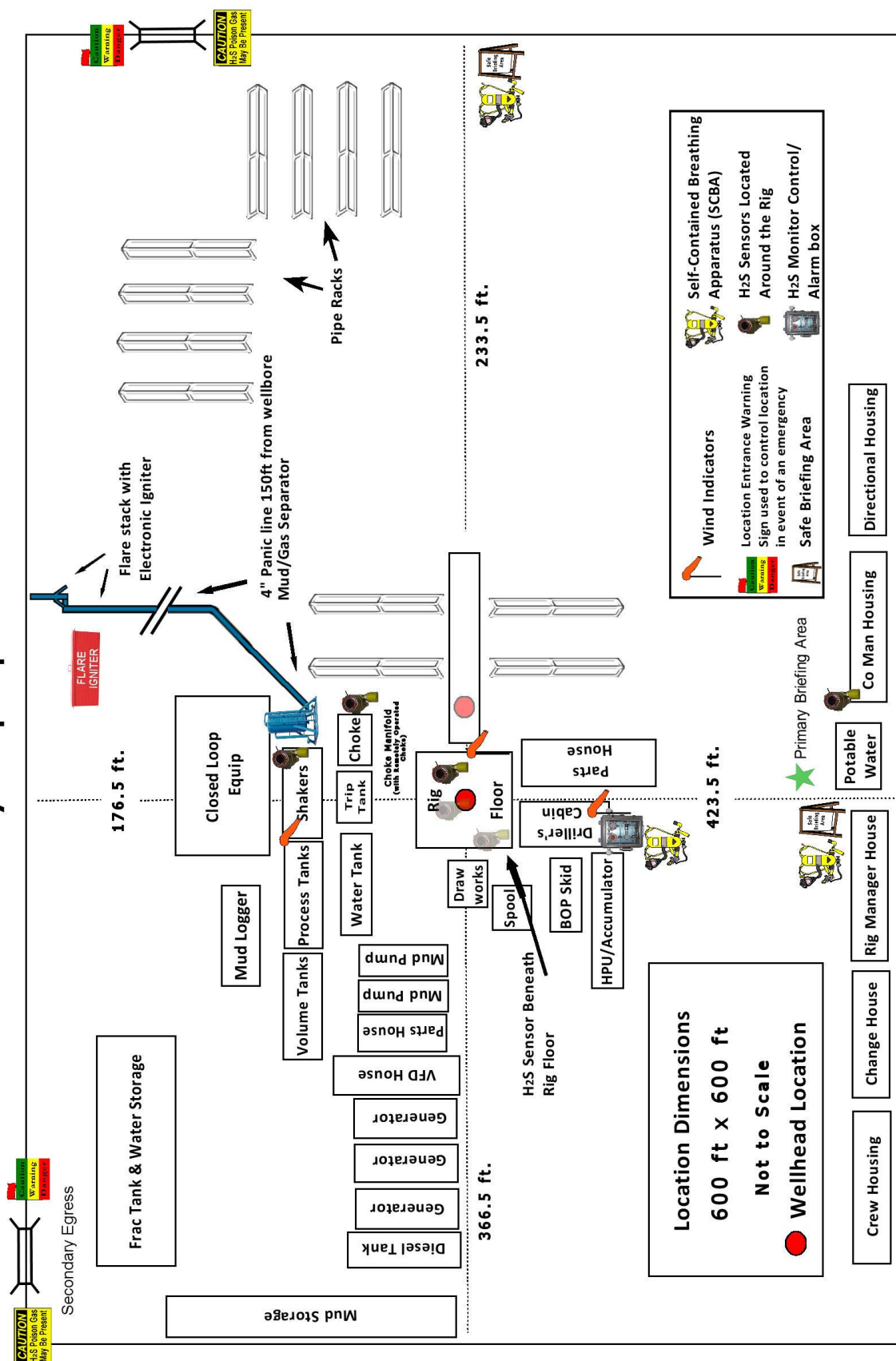
**7. Well testing:**

- A. Drill stem testing will be performed with a minimum number of personnel in the immediate vicinity, which are necessary to safety and adequately conduct the test. The drill stem testing will be conducted during daylight hours and formation fluids will not be flowed to the surface. All drill-stem-testing operations conducted in an H<sub>2</sub>S environment will use the closed chamber method of testing.
- B. There will be no drill stem testing.

<b><u>Devon Energy Corp. Company Call List</u></b>		
Drilling Supervisor – Basin – Mark Kramer		405-823-4796
EHS Professional – Laura Wright		405-439-8129
<b><u>Agency Call List</u></b>		
<b><u>Lea County (575)</u></b>	<b>Hobbs</b>	
	Lea County Communication Authority	393-3981
	State Police	392-5588
	City Police	397-9265
	Sheriff's Office	393-2515
	<b>Ambulance</b>	<b>911</b>
	Fire Department	397-9308
	LEPC (Local Emergency Planning Committee)	393-2870
	NMOCD	393-6161
	US Bureau of Land Management	393-3612
<b><u>Eddy County (575)</u></b>	<b>Carlsbad</b>	
	State Police	885-3137
	City Police	885-2111
	Sheriff's Office	887-7551
	<b>Ambulance</b>	<b>911</b>
	Fire Department	885-3125
	LEPC (Local Emergency Planning Committee)	887-3798
	US Bureau of Land Management	887-6544
	NM Emergency Response Commission (Santa Fe)	(505) 476-9600
	24 HR	(505) 827-9126
	National Emergency Response Center	(800) 424-8802
	National Pollution Control Center: Direct	(703) 872-6000
	For Oil Spills	(800) 280-7118
	<b>Emergency Services</b>	
	Wild Well Control	(281) 784-4700
	Cudd Pressure Control	(915) 699-0139 (915) 563-3356
	Halliburton	(575) 746-2757
	B. J. Services	(575) 746-3569
	<b>Give GPS position:</b>	
	Native Air – Emergency Helicopter – Hobbs (TX & NM)	(800) 642-7828
	Flight For Life - Lubbock, TX	(806) 743-9911
	Aerocare - Lubbock, TX	(806) 747-8923
	Med Flight Air Amb - Albuquerque, NM	(575) 842-4433
	Lifeguard Air Med Svc. Albuquerque, NM	(800) 222-1222
	Poison Control (24/7)	(575) 272-3115
	Oil & Gas Pipeline 24 Hour Service	(800) 364-4366
	NOAA – Website - <a href="http://www.nhc.noaa.gov">www.nhc.noaa.gov</a>	

Prepared in conjunction with  
Dave Small





**District I**  
1625 N. French Dr., Hobbs, NM 88240  
Phone:(575) 393-6161 Fax:(575) 393-0720  
**District II**  
811 S. First St., Artesia, NM 88210  
Phone:(575) 748-1283 Fax:(575) 748-9720  
**District III**  
1000 Rio Brazos Rd., Aztec, NM 87410  
Phone:(505) 334-6178 Fax:(505) 334-6170  
**District IV**  
1220 S. St Francis Dr., Santa Fe, NM 87505  
Phone:(505) 476-3470 Fax:(505) 476-3462

**State of New Mexico**  
**Energy, Minerals and Natural Resources**  
**Oil Conservation Division**  
**1220 S. St Francis Dr.**  
**Santa Fe, NM 87505**

CONDITIONS  
  
Action 216460

CONDITIONS

Operator: DEVON ENERGY PRODUCTION COMPANY, LP 333 West Sheridan Ave. Oklahoma City, OK 73102	OGRID: 6137
	Action Number: 216460
	Action Type: [C-101] BLM - Federal/Indian Land Lease (Form 3160-3)

CONDITIONS

Created By	Condition	Condition Date
pkautz	Will require a File As Drilled C-102 and a Directional Survey with the C-104	5/23/2023
pkautz	Once the well is spud, to prevent ground water contamination through whole or partial conduits from the surface, the operator shall drill without interruption through the fresh water zone or zones and shall immediately set in cement the water protection string	5/23/2023
pkautz	Oil base muds are not to be used until fresh water zones are cased and cemented providing isolation from the oil or diesel. This includes synthetic oils. Oil based mud, drilling fluids and solids must be contained in a steel closed loop system	5/23/2023
pkautz	Cement is required to circulate on both surface and intermediate1 strings of casing	5/23/2023