

Submit Copy To Appropriate District

## Office

District I – (575) 393-6161  
1625 N. French Dr., Hobbs, NM 88240  
District II – (575) 748-1283  
811 S. First St., Artesia, NM 88210  
District III – (505) 334-6178  
1000 Rio Brazos Rd., Aztec, NM 87410  
District IV – (505) 476-3460  
1220 S. St. Francis Dr., Santa Fe, NM  
87505

State of New Mexico  
Energy, Minerals and Natural Resources

Form C-103  
Revised July 18, 2013

OIL CONSERVATION DIVISION  
1220 South St. Francis Dr.  
Santa Fe, NM 87505

WELL API NO. 30-015-28061	
5. Indicate Type of Lease STATE <input checked="" type="checkbox"/> FEE <input type="checkbox"/>	
6. State Oil & Gas Lease No. K-5017	
7. Lease Name or Unit Agreement Name Todd "2" State	
8. Well Number	2
9. OGRID Number 4323	
10. Pool name or Wildcat Ingle Wells, Delaware	
11. Elevation (Show whether DR, RKB, RT, GR, etc.) 3,469'	

## SUNDRY NOTICES AND REPORTS ON WELLS

(DO NOT USE THIS FORM FOR PROPOSALS TO DRILL OR TO DEEPEN OR PLUG BACK TO A DIFFERENT RESERVOIR. USE "APPLICATION FOR PERMIT" (FORM C-101) FOR SUCH PROPOSALS.)

1. Type of Well: Oil Well ☒ Gas Well ☐ Other ☐

2. Name of Operator

Chevron U.S.A. Inc.

3. Address of Operator

6301 Deauville Blvd Midland, Texas 79706

4. Well Location

Unit Letter L: 2310 feet from the South line and 330 feet from the West line  
Section 2 Township 24S Range 31E NMPM County Eddy

## 12. Check Appropriate Box to Indicate Nature of Notice, Report or Other Data

## NOTICE OF INTENTION TO:

PERFORM REMEDIAL WORK ☐ PLUG AND ABANDON ☐  
TEMPORARILY ABANDON ☐ CHANGE PLANS ☐  
PULL OR ALTER CASING ☐ MULTIPLE COMPL ☐  
DOWNHOLE COMMINGLE ☐  
CLOSED-LOOP SYSTEM ☐  
OTHER: ☐

## SUBSEQUENT REPORT OF:

REMEDIAL WORK ☐ ALTERING CASING ☐  
COMMENCE DRILLING OPNS. ☐ P AND A ☒  
CASING/CEMENT JOB ☐  
OTHER: ☐

13. Describe proposed or completed operations. (Clearly state all pertinent details, and give pertinent dates, including estimated date of starting any proposed work). SEE RULE 19.15.7.14 NMAC. For Multiple Completions: Attach wellbore diagram of proposed completion or recompletion.

See attached plugging report and as plugged wellbore diagram.

Spud Date:

Rig Release Date:

I hereby certify that the information above is true and complete to the best of my knowledge and belief.

SIGNATURE Mark Torres TITLE P&A Engineer DATE 6/5/2023

Type or print name Mark Torres E-mail address: marktorres@chevron.com PHONE: 989-264-2525

**For State Use Only**

APPROVED BY: [Signature] TITLE Petroleum Specialist DATE 6/9/23

Conditions of Approval (if any): [Signature]



# EMC Ops Summary - External

Well Name TODD '2' STATE 002	Field Name INGLE WELLS	Lease Todd '2' State	Area Delaware Basin		
Business Unit EMC	County/ Parish Eddy	Global Metrics Region EMC US East	Surface UWI 3001528061		
Basic Well Data					
Current RKB Elevation	Original RKB Elevation (ft) 3,481.00	Latitude (°) 32° 14' 43.44" N	Longitude (°) 103° 45' 20.124" W		
Phases					
Actual Start Date	Actual End Date	Phase 1	Phase 2	Time Log Hrs (hr)	Percent Problem Time (%)
5/10/2023 12:00	5/10/2023 17:00	PREP	FAC	5.00	
5/17/2023 13:00	5/17/2023 16:30	MOB	MOVEON	3.50	
5/17/2023 16:30	5/20/2023 17:00	ABAN	TBGPULL	33.00	
5/20/2023 17:00	6/3/2023 15:00	ABAN	CMTPLUG	87.00	13.79
		REST	FAC		
Start Date		Summary			
5/10/2023		Review JSA, check well for pressure, production ad 50 PSI, intermediate ahd 0 psi and surface had 0 PSI. Crew installed new risers, hot bolted head, graded location and remove flow line.			
5/17/2023		MOB to location, Held safety meeting, review SOP, Tenet 7, MIRU equipment, Debrief.			
5/18/2023		JSA held safety meeting, Review SOP, Review tenet 8, Hazard hunt, 5 psi on TBG, 30psi on production, Opsi on intermediate, Opsi on surface, Pressure test TBG 1300psi for 10min, RU equipment work floor etc., Waiting on tanks, Spot return tanks, Lay down rods, Debrief.			
5/19/2023		JSA held safety meeting, Review SOP, Review tenet 9, Hazard hunt, 5psi on TBG, 5psi on production, Opsi on intermediate, Opsi on surface, RD work floor, RU hot oiler, Pump 50bbl hot down TBG & 20bbl cold, RD ho toiler, NU BOP, Test BOP, Replace leaking fittings, Hanger is leaking bye, Pull hanger, Set packer, Pressure test 1300psi 5min & 250psi 5min held, Lay down packer, CIW debrief.			
5/20/2023		JSA held safety meeting, Review SOP, Review tenet 10, Hazard hunt, 0psi on TBG, 0psi on production, 0psi on intermediate, Opsi on surface, TOH stand back, RU wireline, Set CIBP @6650', POH, RD wireline fill well with brine, Pressure test to 1000psi for 15min, CIW, Secure location, Rig out equipment, Debrief.			
5/22/2023		JSA held safety meeting, Review SOP, Review tenet 2, Hazard hunt, 250psi on production, 0psi on intermediate, Opsi on surface, Bleed off well, TIH & tally, Tag CIBP @6649', Shutdown due to lightning, Debrief.			
5/23/2023		Held safety meeting with crew. Aligned valves to pump cement plug. Once mixing began it was discovered that the dry cement line was plugged with cured cement. Shut down for the rest of the day for repairs.			
5/24/2023		Held safety meeting with crew. Spotted 90 sks of Class C cement from 6649' to 5739'. L/D 42 jnts. TOH standing back. R/U Apollo WL truck. RIH with JBGR. RIH with RCBL and log out from 5650'. R/D Apollo. TIH with TBG to 4841'. Secured well and secured location. SDFN.			
5/25/2023		Held safety meeting with crew. TIH and tagged TOC at 5937'. Upgrade 27 sks to 5684'. TOH to 5300'. Spotted 27 sks of Class C from 5300 to 5050'. Spotted MLF from 5050' to 4485'. TOH to 4485'. Spotted 40 sks of Class C from 4485' to 4135'. TOH to 2000'. WOC. PT. TIH and tagged TOC at 4128'. Spot MLF. TOH to 3011'. Spotted 195 sks Class C from 3011' to 1035'. TOH. SDFN.			
5/26/2023		Held safety meeting with crew. RIH with perf guns tagged at 1178'. Perf'd at 1100'. Broke circulation. RIH with cutter and cut at 1100'. Prep 11" 3K flange. Installed new bolts and torqued to spec. Secured location and SDF the holiday.			
5/30/2023		Arrive on location set up trailers held safety meeting, JSA, Review SOP, Review tenet 10, Hazard hunt. Check location No gas, No pressure. Well on small vacuum. Inspected all equipment. Remove cross over spool. Spear into 5 1/2" casing and pulled free, get off 5 1/2" casing. Install 9" BOPE, Test BOPE to 500 PSI for 10 minutes test good. Rig up working floor, Spot in lay down machine. Spear into 5 1/2" casing and Rig up 5 1/2" tools to lay down casing. Lay down 1100' of 5 1/2" casing. Rig down 5 1/2" tools. Move Lay down machine. Secure well Debrief EOT			
5/31/2023		Arrive on location held safety meeting, JSA, Review SOP, Review tenet 1, Hazard hunt. Check location No gas, No pressure. Well on small vacuum. Pick up 8 5/8" casing scraper. RIH with 8 5/8" scraper on 2 7/8" tubing to 1100'. BOPE Drill. Circulate well bore clean with 80 bbl brine. POOH wit 2 7/8" tubing and 8 5/8" scraper. Bubble test Surface casing and Intermediate casing, Surface casing was losing fluid at 1" ever 30 seconds, Intermediate casing was losing fluid slowly. No bubbles in lather casing string. Crew Lunch Made calls to Chevron and New Mexico OCD Devon David. Set up CBL for next morning Secure well Debrief EOT			
6/1/2023		Arrive on location held safety meeting, JSA, Review SOP, Review tenet 1, Hazard hunt. Check location No gas, No pressure. Well on small vacuum. Wait on Apollo wire line. Apollo wire line showed up Spot in truck and rig up. Test lubricator leaking changed O ring still Leaking. Rig down lubricator and rig up new lubricator from other Apollo unit. Test lubricator good 500 PSI. Log casing from 0' to 1050' static going into the hole logged at 500 PSI coming out from 1050' to 0' Rig down Apollo wire line. Make calls to Chevron and OCD got approval to place 200' plug from 1178' to 978'. RIH with 2 7/8" tubing. Pump 5 bbl fresh water ahead mix and pump 40 sacks class C cement, Yield 1.32, WT 14.8. POOH with 2 7/8" tubing. Pressure well up to 500 PSI for the night Secure well Debrief, EOT			
6/2/2023		Arrive on location held safety meeting, JSA, Review SOP, Review tenet 2, Hazard hunt. Check location No gas, No pressure. Well on small vacuum. Bubble test surface and intermediate casing. Intermediate casing standing full and no bubbles or Gas. Surface casing wouldn't stand full and it was bubbling one bubble ever 30 seconds. Made calls to Chevron and Gilbert Cordero with new Mexico OCD and got plan forward approved to shoot perfs in 8 5/8 casing and circulate cement in and surface casing. Rig up Sunset wire line truck. Shoot perfs at 138'. Rig down Sunset wire line truck. Start pumping and got circulation to surface in the surface casing, started to get returns outside the surface casing. RIH with 2 7/8" tubing Tagged TOC at 973'. Set up to pump cement. Pump 2 bbl ahead Mix and pump 310 sacks class C cement, Yield 1.32, WT 14.8, with visual returns to surface in Intermediate, surface and around surface casing. POOH with 2 7/8" tubing laying down on racks. Top of well with cement. Wash up cement pump. Secure well EOT. *****Shut down from a Tornado warning and Lighting strikes near location.*****			
6/3/2023		Arrive on location held safety meeting, JSA, Review SOP, Review tenet 3, Hazard hunt. Check location No gas, No pressure. Nipple down 9" BOPE. Rig down rig and equipment, load tools and ricks on trailer. Job Complete ready for surface crews.			

## AS PLUGGED WELLBORE DIAGRAM

FIELD: Carlsbad East  
 LEASE/UNIT: Todd "2" State  
 WELL NO.: 2  
 COUNTY: Eddy ST: New Mexico  
 LOCATION: 2310' FSL & 330' FWL, Sec. 2, T-24S, R-31E

API NO.: 30-015-28061  
 CHEVNO:  
 PROD FORMATION:  
 STATUS: SI Oil Well

Spud Date: 11/20/1994  
 TD Date: 12/3/1994  
 Comp Date: 1/13/1995  
 GL: 3,469'  
 KB:  
 Base of Fresh Water: 400'

R11P/SOPA: No/Yes

## Surface Casing

Size: 11-3/4"  
 Wt., Grd.: 42#  
 Depth: 855'  
 Sxs Cmt: 550 sx  
 Circulate: Yes, 100 sx  
 TOC: Surf  
 Hole Size: 14-3/4"

Toc @ 150' via CBL on 6/1/23

6/2/23: Perf @ 138', est. circulation up 8-5/8" x 11-3/4" annulus  
 Circulate 310 sx Class C f/ 973' - 0'; verify cmt to surface in annulus

## Intermediate Casing

Size: 8-5/8"  
 Wt., Grd.: 24#/32#  
 Depth: 4,338'  
 Sxs Cmt: 1150 sx  
 Circulate: Yes, 186 sx  
 TOC: 200' via CBL  
 Hole Size: 11"

6/1/23: Spot 40 sx Class C f/ 1,178' - 978'; tag plug @ 973'

5/30/23: Cut/pull 5-1/2" prod csg f/ 1,100'

Toc @ 1,140' via CBL on 5/24/23

5/25/23: Spot 195 sx Class C f/ 3,011' - 1,035'

Tag plug @ 1,178'; discuss cut/pull f/ 1,100' w/ NMOCD

5/25/23: Spot 40 sx Class C f/ 4,480' - 4,135'

Tag plug @ 4,128'

## Production Casing

Size: 5-1/2"  
 Wt., Grd.: 15.5#/17#  
 Depth: 8,500'  
 DV Tool: 6,000'  
 Sxs Cmt: 1625 sx  
 Circulate: Yes, 166 sx  
 TOC: 1,140' via CBL  
 Hole Size: 7-7/8"

5/25/23: Spot 25 sx Class C f/ 5,300' - 5,050'

5/25/23: Spot 27 sx Class C f/ 5,937' - 5,684'

5/24/23: Spot 90 sx Class C f/ 6,649' - 5,739'; tag @ 5,937

5/20/23: Set CIBP @ 6,650'

Top Perf: 6,750'

Perf Record:

80 holes: 6,750' - 8,462' (12/16/1994)

48 holes: 8,160' - 8,184' (1/5/1995)

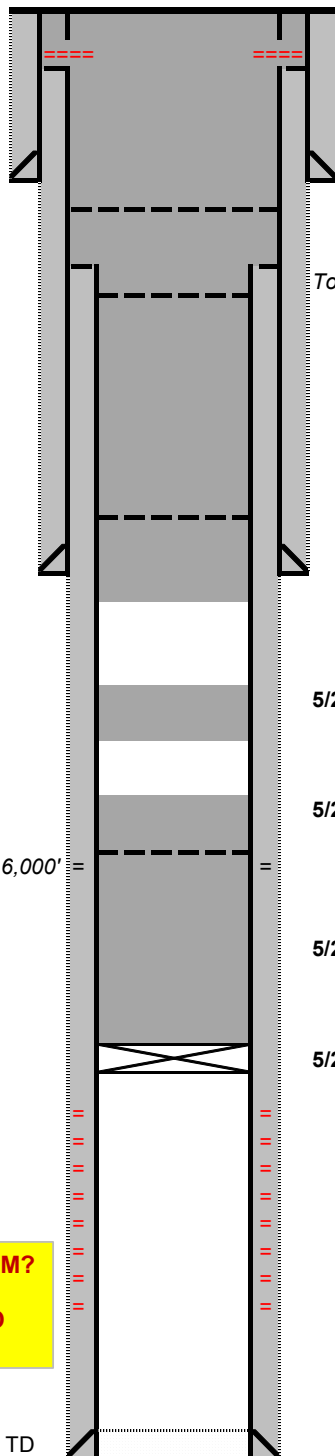
Bottom Perf: 8,462'

DV Tool @ 6,000' =

Formation	Top (MD)
Salt Top	1,100'
Base of Salt	4,385'
Delaware Sand	4,386'
Cherry Canyon	5,248'
Brushy Canyon	6,863'
Bone Spring	8,240'

H2S Concentration >100 PPM?  
 NO  
 NORM Present in Area? NO

8,500' TD



**District I**  
1625 N. French Dr., Hobbs, NM 88240  
Phone:(575) 393-6161 Fax:(575) 393-0720  
**District II**  
811 S. First St., Artesia, NM 88210  
Phone:(575) 748-1283 Fax:(575) 748-9720  
**District III**  
1000 Rio Brazos Rd., Aztec, NM 87410  
Phone:(505) 334-6178 Fax:(505) 334-6170  
**District IV**  
1220 S. St Francis Dr., Santa Fe, NM 87505  
Phone:(505) 476-3470 Fax:(505) 476-3462

State of New Mexico  
Energy, Minerals and Natural Resources  
Oil Conservation Division  
1220 S. St Francis Dr.  
Santa Fe, NM 87505

CONDITIONS

Action 223870

CONDITIONS

Operator: CHEVRON U S A INC 6301 Deauville Blvd Midland, TX 79706	OGRID: 4323
	Action Number: 223870
	Action Type: [C-103] Sub. Plugging (C-103P)

CONDITIONS

Created By	Condition	Condition Date
john.harrison	None	6/9/2023