

Office
District I - (575) 393-6161
1625 N. French Dr., Hobbs, NM 88240
District II - (575) 748-1283
811 S. First St., Artesia, NM 88210
District III - (505) 334-6178
1000 Rio Brazos Rd., Aztec, NM 87410
District IV - (505) 476-3460
1220 S. St. Francis Dr., Santa Fe, NM 87505

State of New Mexico
Energy, Minerals and Natural Resources

Form C-103
Revised July 18, 2013

OIL CONSERVATION DIVISION
1220 South St. Francis Dr.
Santa Fe, NM 87505

WELL API NO. MULTIPLE
5. Indicate Type of Lease STATE [ ] FEE [ ]
6. State Oil & Gas Lease No.
7. Lease Name or Unit Agreement Name Dauntless 7 Fed
8. Well Number MULTIPLE
9. OGRID Number 7377
10. Pool name or Wildcat

SUNDRY NOTICES AND REPORTS ON WELLS
(DO NOT USE THIS FORM FOR PROPOSALS TO DRILL OR TO DEEPEN OR PLUG BACK TO A DIFFERENT RESERVOIR. USE "APPLICATION FOR PERMIT" (FORM C-101) FOR SUCH PROPOSALS.)
1. Type of Well: Oil Well [X] Gas Well [ ] Other [ ]
2. Name of Operator EOG Resources, Inc.
3. Address of Operator P.O. Box 2267, Midland, TX 79702
4. Well Location
Unit Letter : feet from the line and feet from the line
Section 7 Township 25S Range 3E NMPM Lea County
11. Elevation (Show whether DR, RKB, RT, GR, etc.)

12. Check Appropriate Box to Indicate Nature of Notice, Report or Other Data

NOTICE OF INTENTION TO:
PERFORM REMEDIAL WORK [ ] PLUG AND ABANDON [ ]
TEMPORARILY ABANDON [ ] CHANGE PLANS [ ]
PULL OR ALTER CASING [ ] MULTIPLE COMPL [ ]
DOWNHOLE COMMINGLE [ ]
CLOSED-LOOP SYSTEM [ ]
OTHER: [ ]
SUBSEQUENT REPORT OF:
REMEDIAL WORK [ ] ALTERING CASING [ ]
COMMENCE DRILLING OPNS. [ ] P AND A [ ]
CASING/CEMENT JOB [ ]
OTHER: PLC-885 [X]

13. Describe proposed or completed operations. (Clearly state all pertinent details, and give pertinent dates, including estimated date of starting any proposed work). SEE RULE 19.15.7.14 NMAC. For Multiple Completions: Attach wellbore diagram of proposed completion or recompletion.

Pursuant to Administrative Order PLC-885 EOG Resources, Inc. ("EOG") respectfully request to add the following wells authorized to commingle production at the central tank battery located in the SESW of Section 7, Township 25 South, Range 33 East, Lea County, NM. All production from the subject well will be allocated using readings from individual well meters.

- Dauntless 7 Fed 215H 30-025-51445
Dauntless 7 Fed 512H 30-025-51273
Dauntless 7 Fed 513H 30-025-50497
Dauntless 7 Fed 514H 30-025-50494
Dauntless 7 Fed 515H 30-025-51271
Dauntless 7 Fed 521H 30-025-51272
Dauntless 7 Fed 583H 30-025-51270

Spud Date: [ ]

Rig Release Date: [ ]

I hereby certify that the information above is true and complete to the best of my knowledge and belief.

SIGNATURE Lisa Youngblood TITLE Regulatory Specialist DATE 6/15/2023

Type or print name Lisa Youngblood E-mail address: lisa\_youngblood@eogresources.com PHONE: 432-247-6331

For State Use Only

APPROVED BY: Dean R McClure TITLE Petroleum Engineer DATE 06/27/2023

Conditions of Approval (if any):

District I  
1625 N. French Dr., Hobbs, NM 88240  
Phone: (575) 393-6161 Fax: (575) 393-0720  
District II  
811 S. First St., Artesia, NM 88210  
Phone: (575) 748-1283 Fax: (575) 748-9720  
District III  
1000 Rio Brazos Road, Aztec, NM 87410  
Phone: (505) 334-6178 Fax: (505) 334-6170  
District IV  
1220 S. St. Francis Dr., Santa Fe, NM 87505  
Phone: (505) 476-3460 Fax: (505) 476-3462

State of New Mexico  
Energy, Minerals & Natural Resources  
Department  
OIL CONSERVATION DIVISION  
1220 South St. Francis Dr.  
Santa Fe, NM 87505

FORM C-102  
Revised August 1, 2011  
Submit one copy to appropriate  
District Office

AMENDED REPORT

WELL LOCATION AND ACREAGE DEDICATION PLAT

<sup>1</sup> API Number 30-025-51445		<sup>2</sup> Pool Code 97784 97903		<sup>3</sup> Pool Name WC-025 G-08 S253235G;LWR BONE SPRIN					
<sup>4</sup> Property Code 324978		<sup>5</sup> Property Name DAUNTLESS 7 FED			<sup>6</sup> Well Number 215H				
<sup>7</sup> OGRID No. 7377		<sup>8</sup> Operator Name EOG RESOURCES, INC.			<sup>9</sup> Elevation 3491'				
<sup>10</sup> Surface Location									
UL or lot no. 4	Section 7	Township 25-S	Range 33-E	Lot Idn -	Feet from the 310'	North/South line SOUTH	Feet from the 805'	East/West line WEST	County LEA
<sup>11</sup> Bottom Hole Location If Different From Surface									
UL or lot no. 4	Section 6	Township 25-S	Range 33-E	Lot Idn -	Feet from the 100'	North/South line NORTH	Feet from the 400'	East/West line WEST	County LEA
<sup>12</sup> Dedicated Acres 638.40		<sup>13</sup> Joint or Infill		<sup>14</sup> Consolidation Code		<sup>15</sup> Order No. LEASE WELL			

No allowable will be assigned to this completion until all interests have been consolidated or a non-standard unit has been approved by the division.

	<p>NEW MEXICO EAST NAD 1983</p> <p><u>SURFACE LOCATION (SHL)</u></p> <p>310' FSL - SEC. 7 805' FWL - SEC. 7 X=762970 Y=414935 LAT.: N 32.1387102 LONG.: W 103.6172893</p> <p><u>KICK OFF POINT (KOP)</u></p> <p><u>UPPER MOST PERF. (UMP)</u></p> <p>100' FSL - SEC. 7 400' FWL - SEC. 7 X=762567 Y=414723 LAT.: N 32.1381338 LONG.: W 103.6185971</p> <p><u>LOWER MOST PERF. (LMP)/</u> <u>BOTTOM HOLE LOCATION (BHL)</u></p> <p>100' FNL - SEC. 6 400' FWL - SEC. 6 X=762517 Y=425084 LAT.: N 32.1666153 LONG.: W 103.6185359</p>	<p><sup>17</sup>OPERATOR CERTIFICATION</p> <p><i>I hereby certify that the information contained herein is true and complete to the best of my knowledge and belief, and that this organization either owns a working interest or unleased mineral interest in the land including the proposed bottom hole location or has a right to drill this well at this location pursuant to a contract with an owner of such a mineral or working interest, or to a voluntary pooling agreement or a compulsory pooling order heretofore entered by the division.</i></p> <p><i>Lisa Youngblood</i> 4/26/23 Signature Date</p> <p>Lisa Youngblood Printed Name</p> <p>lisa_youngblood@eogresources.com E-mail Address</p> <p><sup>18</sup>SURVEYOR CERTIFICATION</p> <p><i>I hereby certify that the well location shown on this plat was plotted from field notes of actual surveys made by me or under my supervision, and that the same is true to the best of my belief.</i></p> <p>04/11/2023 Date of Survey</p> <p>Signature and Seal of Professional Surveyor</p>
	<p>Certificate Number</p> <p>NEW MEXICO EAST NAD 1927</p> <p><u>SURFACE LOCATION (SHL)</u> X=721785 Y=414877 LAT.: N 32.1385858 LONG.: W 103.6168150</p> <p><u>UPPER MOST PERF. (UMP)</u> X=721381 Y=414665 LAT.: N 32.1380094 LONG.: W 103.6181228</p> <p><u>LOWER MOST PERF. (LMP)/</u> <u>BOTTOM HOLE LOCATION (BHL)</u> X=721332 Y=425008 LAT.: N 32.1664911 LONG.: W 103.6180599</p>	

District I  
1625 N. French Dr., Hobbs, NM 88240  
Phone: (575) 393-6161 Fax: (575) 393-0720  
District II  
811 S. First St., Artesia, NM 88210  
Phone: (575) 748-1283 Fax: (575) 748-9720  
District III  
1000 Rio Brazos Road, Aztec, NM 87410  
Phone: (505) 334-6178 Fax: (505) 334-6170  
District IV  
1220 S. St. Francis Dr., Santa Fe, NM 87505  
Phone: (505) 476-3460 Fax: (505) 476-3462

State of New Mexico  
Energy, Minerals & Natural Resources  
Department  
OIL CONSERVATION DIVISION  
1220 South St. Francis Dr.  
Santa Fe, NM 87505

FORM C-102

Revised August 1, 2011

Submit one copy to appropriate  
District Office

AMENDED REPORT

WELL LOCATION AND ACREAGE DEDICATION PLAT

<sup>1</sup> API Number <b>30-025-50497</b>		<sup>2</sup> Pool Code <b>97903</b>		<sup>3</sup> Pool Name <b>WC-025 G-08 S253235G; Lower Bone Spring</b>	
<sup>4</sup> Property Code <b>324978</b>		<sup>5</sup> Property Name <b>DAUNTLESS 7 FED</b>			<sup>6</sup> Well Number <b>513H</b>
<sup>7</sup> OGRID No. <b>7377</b>		<sup>8</sup> Operator Name <b>EOG RESOURCES, INC.</b>			<sup>9</sup> Elevation <b>3493'</b>

<sup>10</sup>Surface Location

UL or lot no.	Section	Township	Range	Lot Idn	Feet from the	North/South line	Feet from the	East/West line	County
N	7	25	33	-	274'	SOUTH	2471'	WEST	LEA

<sup>11</sup>Bottom Hole Location If Different From Surface

UL or lot no.	Section	Township	Range	Lot Idn	Feet from the	North/South line	Feet from the	East/West line	County
4	6	25	33	-	100'	NORTH	1250'	WEST	LEA

<sup>12</sup> Dedicated Acres <b>638.40</b>	<sup>13</sup> Joint or Infill	<sup>14</sup> Consolidation Code	<sup>15</sup> Order No.
--	-------------------------------	----------------------------------	-------------------------

No allowable will be assigned to this completion until all interests have been consolidated or a non-standard unit has been approved by the division.

	<p>NEW MEXICO EAST NAD 1983</p> <p><u>SURFACE LOCATION (SHL)</u></p> <p>274' FSL - SEC. 7 2471' FWL - SEC. 7 X=764637 Y=414911 LAT.: N 32.1386133 LONG.: W 103.6119060</p> <p><u>UPPER MOST PERF. (UMP)</u></p> <p>100' FSL - SEC. 7 1250' FWL - SEC. 7 X=763417 Y=414729 LAT.: N 32.1381343 LONG.: W 103.6158511</p> <p><u>LOWER MOST PERF. (LMP)/ BOTTOM HOLE LOCATION (BHL)</u></p> <p>100' FNL - SEC. 6 1250' FWL - SEC. 6 X=763367 Y=425089 LAT.: N 32.1666140 LONG.: W 103.6157890</p>	<p><sup>17</sup>OPERATOR CERTIFICATION</p> <p><i>I hereby certify that the information contained herein is true and complete to the best of my knowledge and belief, and that this organization either owns a working interest or unleased mineral interest in the land including the proposed bottom hole location or has a right to drill this well at this location pursuant to a contract with an owner of such a mineral or working interest, or to a voluntary pooling agreement or a compulsory pooling order heretofore entered by the division.</i></p> <p><i>Star L Harrell</i> 3/30/2023 Signature Date</p> <p>Star L Harrell Printed Name star_harrell@eogresources.com E-mail Address</p> <p><sup>18</sup>SURVEYOR CERTIFICATION</p> <p><i>I hereby certify that the well location shown on this plat was plotted from field notes of actual surveys made by me or under my supervision, and that the same is true to the best of my belief.</i></p> <p>07/19/2019 Date of Survey Signature and Seal of Professional Surveyor</p> <p>Certificate Number</p> <p>NEW MEXICO EAST NAD 1927</p> <table border="0"> <tr> <td><u>SURFACE LOCATION (SHL)</u> X=723451 Y=414853 LAT.: N 32.1384899 LONG.: W 103.6114318</td> <td><u>UPPER MOST PERF. (UMP)</u> X=722231 Y=414671 LAT.: N 32.1380099 LONG.: W 103.6153768</td> </tr> <tr> <td><u>LOWER MOST PERF. (LMP)/ BOTTOM HOLE LOCATION (BHL)</u> X=722182 Y=425031 LAT.: N 32.1664898 LONG.: W 103.6153131</td> <td></td> </tr> </table>	<u>SURFACE LOCATION (SHL)</u> X=723451 Y=414853 LAT.: N 32.1384899 LONG.: W 103.6114318	<u>UPPER MOST PERF. (UMP)</u> X=722231 Y=414671 LAT.: N 32.1380099 LONG.: W 103.6153768	<u>LOWER MOST PERF. (LMP)/ BOTTOM HOLE LOCATION (BHL)</u> X=722182 Y=425031 LAT.: N 32.1664898 LONG.: W 103.6153131	
	<u>SURFACE LOCATION (SHL)</u> X=723451 Y=414853 LAT.: N 32.1384899 LONG.: W 103.6114318	<u>UPPER MOST PERF. (UMP)</u> X=722231 Y=414671 LAT.: N 32.1380099 LONG.: W 103.6153768				
<u>LOWER MOST PERF. (LMP)/ BOTTOM HOLE LOCATION (BHL)</u> X=722182 Y=425031 LAT.: N 32.1664898 LONG.: W 103.6153131						

District I  
1625 N. French Dr., Hobbs, NM 88240  
Phone: (575) 393-6161 Fax: (575) 393-0720  
District II  
811 S. First St., Artesia, NM 88210  
Phone: (575) 748-1283 Fax: (575) 748-9720  
District III  
1000 Rio Brazos Road, Aztec, NM 87410  
Phone: (505) 334-6178 Fax: (505) 334-6170  
District IV  
1220 S. St. Francis Dr., Santa Fe, NM 87505  
Phone: (505) 476-3460 Fax: (505) 476-3462

State of New Mexico  
Energy, Minerals & Natural Resources  
Department  
OIL CONSERVATION DIVISION  
1220 South St. Francis Dr.  
Santa Fe, NM 87505

FORM C-102

Revised August 1, 2011

Submit one copy to appropriate  
District Office

AMENDED REPORT

WELL LOCATION AND ACREAGE DEDICATION PLAT

<sup>1</sup> API Number <b>30-025-50494</b>		<sup>2</sup> Pool Code <b>97903</b>		<sup>3</sup> Pool Name <b>WC-025 G-08 S253235G; Lower Bone Spring</b>	
<sup>4</sup> Property Code <b>324978</b>		<sup>5</sup> Property Name <b>DAUNTLESS 7 FED</b>			<sup>6</sup> Well Number <b>514H</b>
<sup>7</sup> OGRID No. <b>7377</b>		<sup>8</sup> Operator Name <b>EOG RESOURCES, INC.</b>			<sup>9</sup> Elevation <b>3493'</b>

<sup>10</sup>Surface Location

UL or lot no.	Section	Township	Range	Lot Idn	Feet from the	North/South line	Feet from the	East/West line	County
N	7	25	33	-	274'	SOUTH	2524'	WEST	LEA

<sup>11</sup>Bottom Hole Location If Different From Surface

UL or lot no.	Section	Township	Range	Lot Idn	Feet from the	North/South line	Feet from the	East/West line	County
3	6	25	33	-	100'	NORTH	1640'	WEST	LEA

<sup>12</sup> Dedicated Acres <b>638.40</b>	<sup>13</sup> Joint or Infill	<sup>14</sup> Consolidation Code	<sup>15</sup> Order No.
--	-------------------------------	----------------------------------	-------------------------

No allowable will be assigned to this completion until all interests have been consolidated or a non-standard unit has been approved by the division.

<p>Diagram showing well location (SHL, UMP, LMP/BHL) and lot divisions (LOT 1-4, LOT 5-7, LOT 1-4) across sections 6 and 7, townships 25 and 26, ranges 32 and 33. Includes survey data like 'AZ = 359.72° 10280.5'', 'AZ = 258.47° 901.2'', and 'USA NMNM 122619'.</p>	<p>NEW MEXICO EAST NAD 1983</p> <p><u>SURFACE LOCATION (SHL)</u></p> <p>274' FSL - SEC. 7 2524' FWL - SEC. 7 X=764690 Y=414911 LAT.: N 32.1386133 LONG.: W 103.6117348</p> <p><u>UPPER MOST PERF. (UMP)</u></p> <p>100' FSL - SEC. 7 1640' FWL - SEC. 7 X=763807 Y=414731 LAT.: N 32.1381346 LONG.: W 103.6145911</p> <p><u>LOWER MOST PERF. (LMP)/ BOTTOM HOLE LOCATION (BHL)</u></p> <p>100' FNL - SEC. 6 1640' FWL - SEC. 6 X=763757 Y=425092 LAT.: N 32.1666133 LONG.: W 103.6145287</p>	<p><sup>17</sup>OPERATOR CERTIFICATION</p> <p>I hereby certify that the information contained herein is true and complete to the best of my knowledge and belief, and that this organization either owns a working interest or unleased mineral interest in the land including the proposed bottom hole location or has a right to drill this well at this location pursuant to a contract with an owner of such a mineral or working interest, or to a voluntary pooling agreement or a compulsory pooling order heretofore entered by the division.</p> <p><i>Star L Harrell</i> 3/30/2023 Signature Date</p> <p>Star L Harrell Printed Name</p> <p>star_harrell@eogresources.com E-mail Address</p>				
	<p><sup>18</sup>SURVEYOR CERTIFICATION</p> <p>I hereby certify that the well location shown on this plat was plotted from field notes of actual surveys made by me or under my supervision, and that the same is true to the best of my belief.</p> <p>07/19/2019 Date of Survey</p> <p>Signature and Seal of Professional Surveyor</p>	<p>Certificate Number</p> <p>NEW MEXICO EAST NAD 1927</p> <table border="1"> <tr> <td><u>SURFACE LOCATION (SHL)</u> X=723504 Y=414853 LAT.: N 32.1384890 LONG.: W 103.6112606</td> <td><u>UPPER MOST PERF. (UMP)</u> X=722621 Y=414673 LAT.: N 32.1380102 LONG.: W 103.6141169</td> </tr> <tr> <td><u>LOWER MOST PERF. (LMP)/ BOTTOM HOLE LOCATION (BHL)</u> X=722572 Y=425033 LAT.: N 32.1664891 LONG.: W 103.6140528</td> <td></td> </tr> </table>	<u>SURFACE LOCATION (SHL)</u> X=723504 Y=414853 LAT.: N 32.1384890 LONG.: W 103.6112606	<u>UPPER MOST PERF. (UMP)</u> X=722621 Y=414673 LAT.: N 32.1380102 LONG.: W 103.6141169	<u>LOWER MOST PERF. (LMP)/ BOTTOM HOLE LOCATION (BHL)</u> X=722572 Y=425033 LAT.: N 32.1664891 LONG.: W 103.6140528	
	<u>SURFACE LOCATION (SHL)</u> X=723504 Y=414853 LAT.: N 32.1384890 LONG.: W 103.6112606	<u>UPPER MOST PERF. (UMP)</u> X=722621 Y=414673 LAT.: N 32.1380102 LONG.: W 103.6141169				
	<u>LOWER MOST PERF. (LMP)/ BOTTOM HOLE LOCATION (BHL)</u> X=722572 Y=425033 LAT.: N 32.1664891 LONG.: W 103.6140528					

District I  
1625 N. French Dr., Hobbs, NM 88240  
Phone: (505) 393-6161 Fax: (505) 393-0720  
District II  
811 S. First St., Artesia, NM 88210  
Phone: (505) 748-1283 Fax: (505) 748-9720  
District III  
1000 Rio Brazos Road, Aztec, NM 87410  
Phone: (505) 334-6178 Fax: (505) 334-6170  
District IV  
1220 S. St. Francis Dr., Santa Fe, NM 87505  
Phone: (505) 476-3460 Fax: (505) 476-3462

State of New Mexico  
Energy, Minerals & Natural Resources  
Department  
OIL CONSERVATION DIVISION  
1220 South St. Francis Dr.  
Santa Fe, NM 87505

FORM C-102

Revised August 1, 2011

Submit one copy to appropriate  
District Office

AMENDED REPORT

WELL LOCATION AND ACREAGE DEDICATION PLAT

<sup>1</sup> API Number <b>30-025-51271</b>		<sup>2</sup> Pool Code <b>97903</b>		<sup>3</sup> Pool Name <b>WC-025 G-08 S253235G; Lower Bone Spring</b>	
<sup>4</sup> Property Code <b>324978</b>		<sup>5</sup> Property Name <b>DAUNTLESS 7 FED</b>			<sup>6</sup> Well Number <b>515H</b>
<sup>7</sup> OGRID No. <b>7377</b>		<sup>8</sup> Operator Name <b>EOG RESOURCES, INC.</b>			<sup>9</sup> Elevation <b>3493'</b>

<sup>10</sup>Surface Location

UL or lot no.	Section	Township	Range	Lot Idn	Feet from the	North/South line	Feet from the	East/West line	County
N	7	25	33	-	274'	SOUTH	2544'	WEST	LEA

<sup>11</sup>Bottom Hole Location If Different From Surface

UL or lot no.	Section	Township	Range	Lot Idn	Feet from the	North/South line	Feet from the	East/West line	County
3	6	25	33	-	100'	NORTH	2170'	WEST	LEA

<sup>12</sup> Dedicated Acres <b>638.40</b>	<sup>13</sup> Joint or Infill	<sup>14</sup> Consolidation Code	<sup>15</sup> Order No.
--	-------------------------------	----------------------------------	-------------------------

No allowable will be assigned to this completion until all interests have been consolidated or a non-standard unit has been approved by the division.

	<p>NEW MEXICO EAST NAD 1983</p> <p><u>SURFACE LOCATION (SHL)</u> 274' FSL - SEC. 7 2544' FWL - SEC. 7 X=764710 Y=414912 LAT.: N 32.1386134 LONG.: W 103.6116701</p> <p><u>UPPER MOST PERF. (UMP)</u> 100' FSL - SEC. 7 2170' FWL - SEC. 7 X=764337 Y=414735 LAT.: N 32.1381349 LONG.: W 103.6128789</p> <p><u>LOWER MOST PERF. (LMP)/ BOTTOM HOLE LOCATION (BHL)</u> 100' FNL - SEC. 6 2170' FWL - SEC. 6 X=764287 Y=425095 LAT.: N 32.1666125 LONG.: W 103.6128159</p>	<p><sup>17</sup>OPERATOR CERTIFICATION</p> <p><i>I hereby certify that the information contained herein is true and complete to the best of my knowledge and belief, and that this organization either owns a working interest or unleased mineral interest in the land including the proposed bottom hole location or has a right to drill this well at this location pursuant to a contract with an owner of such a mineral or working interest, or to a voluntary pooling agreement or a compulsory pooling order heretofore entered by the division.</i></p> <p><i>Star L Harrell</i> 4/10/2023 Signature Date</p> <p>Star L Harrell Printed Name</p> <p>star_harrell@eogresources.com E-mail Address</p> <p><sup>18</sup>SURVEYOR CERTIFICATION</p> <p><i>I hereby certify that the well location shown on this plat was plotted from field notes of actual surveys made by me or under my supervision, and that the same is true to the best of my belief.</i></p> <p>07/19/2019 Date of Survey</p> <p>Signature and Seal of Professional Surveyor</p> <p>Certificate Number</p> <p>NEW MEXICO EAST NAD 1927</p> <table border="1"> <tr> <td><u>SURFACE LOCATION (SHL)</u> X=723524 Y=414854 LAT.: N 32.1384890 LONG.: W 103.611960</td> <td><u>UPPER MOST PERF. (UMP)</u> X=723151 Y=414877 LAT.: N 32.1380105 LONG.: W 103.6124048</td> </tr> <tr> <td><u>LOWER MOST PERF. (LMP)/ BOTTOM HOLE LOCATION (BHL)</u> X=723102 Y=425037 LAT.: N 32.1664883 LONG.: W 103.6123401</td> <td></td> </tr> </table>	<u>SURFACE LOCATION (SHL)</u> X=723524 Y=414854 LAT.: N 32.1384890 LONG.: W 103.611960	<u>UPPER MOST PERF. (UMP)</u> X=723151 Y=414877 LAT.: N 32.1380105 LONG.: W 103.6124048	<u>LOWER MOST PERF. (LMP)/ BOTTOM HOLE LOCATION (BHL)</u> X=723102 Y=425037 LAT.: N 32.1664883 LONG.: W 103.6123401	
	<u>SURFACE LOCATION (SHL)</u> X=723524 Y=414854 LAT.: N 32.1384890 LONG.: W 103.611960	<u>UPPER MOST PERF. (UMP)</u> X=723151 Y=414877 LAT.: N 32.1380105 LONG.: W 103.6124048				
<u>LOWER MOST PERF. (LMP)/ BOTTOM HOLE LOCATION (BHL)</u> X=723102 Y=425037 LAT.: N 32.1664883 LONG.: W 103.6123401						

District I  
1625 N. French Dr., Hobbs, NM 88240  
Phone: (575) 393-6161 Fax: (575) 393-0720  
District II  
811 S. First St., Artesia, NM 88210  
Phone: (575) 748-1283 Fax: (575) 748-9720  
District III  
1000 Rio Brazos Road, Aztec, NM 87410  
Phone: (505) 334-6178 Fax: (505) 334-6170  
District IV  
1220 S. St. Francis Dr., Santa Fe, NM 87505  
Phone: (505) 476-3460 Fax: (505) 476-3462

State of New Mexico  
Energy, Minerals & Natural Resources  
Department  
OIL CONSERVATION DIVISION  
1220 South St. Francis Dr.  
Santa Fe, NM 87505

FORM C-102

Revised August 1, 2011

Submit one copy to appropriate  
District Office

AMENDED REPORT

WELL LOCATION AND ACREAGE DEDICATION PLAT

<sup>1</sup> API Number 30-025-51272		<sup>2</sup> Pool Code 97903		<sup>3</sup> Pool Name WC-025 G-08 S253235G; Lower Bone Spring	
<sup>4</sup> Property Code 324978		<sup>5</sup> Property Name DAUNTLESS 7 FED			<sup>6</sup> Well Number 521H
<sup>7</sup> OGRID No. 7377		<sup>8</sup> Operator Name EOG RESOURCES, INC.			<sup>9</sup> Elevation 3492'

<sup>10</sup>Surface Location

UL or lot no.	Section	Township	Range	Lot Idn	Feet from the	North/South line	Feet from the	East/West line	County
4	7	25	33	-	310'	SOUTH	788'	WEST	LEA

<sup>11</sup>Bottom Hole Location If Different From Surface

UL or lot no.	Section	Township	Range	Lot Idn	Feet from the	North/South line	Feet from the	East/West line	County
4	6	25	33	-	100'	NORTH	330'	WEST	LEA

<sup>12</sup> Dedicated Acres 638.40	<sup>13</sup> Joint or Infill	<sup>14</sup> Consolidation Code	<sup>15</sup> Order No.
---	-------------------------------	----------------------------------	-------------------------

No allowable will be assigned to this completion until all interests have been consolidated or a non-standard unit has been approved by the division.

NEW MEXICO EAST  
NAD 1983

SURFACE LOCATION (SHL)  
310' FSL - SEC. 7  
788' FWL - SEC. 7  
X=762954 Y=414935  
LAT.: N 32.1387102  
LONG.: W 103.6173427

UPPER MOST PERF. (UMP)  
100' FSL - SEC. 7  
330' FWL - SEC. 7  
X=762497 Y=414722  
LAT.: N 32.1381337  
LONG.: W 103.6188231

LOWER MOST PERF. (LMP)/  
BOTTOM HOLE LOCATION (BHL)  
100' FNL - SEC. 6  
330' FWL - SEC. 6  
X=762447 Y=425084  
LAT.: N 32.1666154  
LONG.: W 103.6187627

<sup>17</sup>OPERATOR CERTIFICATION

*I hereby certify that the information contained herein is true and complete to the best of my knowledge and belief, and that this organization either owns a working interest or unleased mineral interest in the land including the proposed bottom hole location or has a right to drill this well at this location pursuant to a contract with an owner of such a mineral or working interest, or to a voluntary pooling agreement or a compulsory pooling order heretofore entered by the division.*

*Star L Harrell* 4/10/2023  
Signature Date

Star L Harrell  
Printed Name

star\_harrell@eogresources.com  
E-mail Address

<sup>18</sup>SURVEYOR CERTIFICATION

*I hereby certify that the well location shown on this plat was plotted from field notes of actual surveys made by me or under my supervision, and that the same is true to the best of my belief.*

07/19/2019  
Date of Survey

Signature and Seal of Professional Surveyor

Certificate Number

NEW MEXICO EAST  
NAD 1927

<u>SURFACE LOCATION (SHL)</u> X=721768 Y=414877 LAT.: N 32.1385858 LONG.: W 103.6186883	<u>UPPER MOST PERF. (UMP)</u> X=721311 Y=414864 LAT.: N 32.1380093 LONG.: W 103.6183489
<u>LOWER MOST PERF. (LMP)/ BOTTOM HOLE LOCATION (BHL)</u> X=721262 Y=425025 LAT.: N 32.1664912 LONG.: W 103.6182867	

District I  
1625 N. French Dr., Hobbs, NM 88240  
Phone: (575) 393-6161 Fax: (575) 393-0720  
District II  
811 S. First St., Artesia, NM 88210  
Phone: (575) 748-1283 Fax: (575) 748-9720  
District III  
1000 Rio Brazos Road, Aztec, NM 87410  
Phone: (505) 334-6178 Fax: (505) 334-6170  
District IV  
1220 S. St. Francis Dr., Santa Fe, NM 87505  
Phone: (505) 476-3460 Fax: (505) 476-3462

State of New Mexico  
Energy, Minerals & Natural Resources  
Department  
OIL CONSERVATION DIVISION  
1220 South St. Francis Dr.  
Santa Fe, NM 87505

FORM C-102

Revised August 1, 2011

Submit one copy to appropriate  
District Office

AMENDED REPORT

WELL LOCATION AND ACREAGE DEDICATION PLAT

<sup>1</sup> API Number 30-025-51270		<sup>2</sup> Pool Code 97903		<sup>3</sup> Pool Name WC-025 G-08 S253235G; Lower Bone Spring	
<sup>4</sup> Property Code 324978		<sup>5</sup> Property Name DAUNTLESS 7 FED			<sup>6</sup> Well Number 583H
<sup>7</sup> OGRID No. 7377		<sup>8</sup> Operator Name EOG RESOURCES, INC.			<sup>9</sup> Elevation 3493'

<sup>10</sup>Surface Location

UL or lot no.	Section	Township	Range	Lot Idn	Feet from the	North/South line	Feet from the	East/West line	County
N	7	25	33	-	274'	SOUTH	2504'	WEST	LEA

<sup>11</sup>Bottom Hole Location If Different From Surface

UL or lot no.	Section	Township	Range	Lot Idn	Feet from the	North/South line	Feet from the	East/West line	County
3	6	25	33	-	100'	NORTH	1470'	WEST	LEA

<sup>12</sup> Dedicated Acres 638.40	<sup>13</sup> Joint or Infill	<sup>14</sup> Consolidation Code	<sup>15</sup> Order No.
---	-------------------------------	----------------------------------	-------------------------

No allowable will be assigned to this completion until all interests have been consolidated or a non-standard unit has been approved by the division.

<p>The diagram shows a survey plat with a grid of sections and lots. A well location is marked with a red dot and labeled 'LMP/BHL'. The well is located in Section 6, Township 25-S, Range 33-E. The well location is 100 feet from the surface location (SHL). The well is also 1470 feet from the uppermost perforation (UMP) and 1048.7 feet from the lowermost perforation (LMP). The well is located in Lot 1, Section 6, Township 25-S, Range 33-E. The well is also 100 feet from the surface location (SHL). The well is also 1470 feet from the uppermost perforation (UMP) and 1048.7 feet from the lowermost perforation (LMP). The well is located in Lot 1, Section 6, Township 25-S, Range 33-E. The well is also 100 feet from the surface location (SHL). The well is also 1470 feet from the uppermost perforation (UMP) and 1048.7 feet from the lowermost perforation (LMP).</p>	<p>NEW MEXICO EAST NAD 1983</p> <p><u>SURFACE LOCATION (SHL)</u></p> <p>274' FSL - SEC. 7 2504' FWL - SEC. 7 X=764670 Y=414911 LAT.: N 32.1386133 LONG.: W 103.6117994</p> <p><u>UPPER MOST PERF. (UMP)</u></p> <p>100' FSL - SEC. 7 1470' FWL - SEC. 7 X=763637 Y=414730 LAT.: N 32.1381345 LONG.: W 103.6151403</p> <p><u>LOWER MOST PERF. (LMP)/ BOTTOM HOLE LOCATION (BHL)</u></p> <p>100' FNL - SEC. 6 1470' FWL - SEC. 6 X=763587 Y=425091 LAT.: N 32.1666136 LONG.: W 103.6150781</p>	<p><sup>17</sup>OPERATOR CERTIFICATION</p> <p>I hereby certify that the information contained herein is true and complete to the best of my knowledge and belief, and that this organization either owns a working interest or unleased mineral interest in the land including the proposed bottom hole location or has a right to drill this well at this location pursuant to a contract with an owner of such a mineral or working interest, or to a voluntary pooling agreement or a compulsory pooling order heretofore entered by the division.</p> <p><i>Star L Harrell</i> 4/10/2023 Signature Date</p> <p>Star L Harrell Printed Name</p> <p>star_harrell@eogresources.com E-mail Address</p>
	<p><sup>18</sup>SURVEYOR CERTIFICATION</p> <p>I hereby certify that the well location shown on this plat was plotted from field notes of actual surveys made by me or under my supervision, and that the same is true to the best of my belief.</p> <p>07/19/2019 Date of Survey</p> <p>Signature and Seal of Professional Surveyor</p> <p></p>	<p>Certificate Number</p> <p>NEW MEXICO EAST NAD 1927</p> <p><u>SURFACE LOCATION (SHL)</u> X=723484 Y=414853 LAT.: N 32.1384899 LONG.: W 103.6113252</p> <p><u>UPPER MOST PERF. (UMP)</u> X=722451 Y=414672 LAT.: N 32.1380101 LONG.: W 103.6146661</p> <p><u>LOWER MOST PERF. (LMP)/ BOTTOM HOLE LOCATION (BHL)</u> X=722402 Y=425032 LAT.: N 32.1664894 LONG.: W 103.6146022</p>

District I  
1625 N. French Dr., Hobbs, NM 88240  
Phone: (575) 393-6161 Fax: (575) 393-0720  
District II  
811 S. First St., Artesia, NM 88210  
Phone: (575) 748-1283 Fax: (575) 748-9720  
District III  
1000 Rio Brazos Road, Aztec, NM 87410  
Phone: (505) 334-6178 Fax: (505) 334-6170  
District IV  
1220 S. St. Francis Dr., Santa Fe, NM 87505  
Phone: (505) 476-3460 Fax: (505) 476-3462

State of New Mexico  
Energy, Minerals & Natural Resources  
Department  
OIL CONSERVATION DIVISION  
1220 South St. Francis Dr.  
Santa Fe, NM 87505

FORM C-102

Revised August 1, 2011

Submit one copy to appropriate  
District Office

AMENDED REPORT

WELL LOCATION AND ACREAGE DEDICATION PLAT

<sup>1</sup> API Number <b>30-025- 51273</b>		<sup>2</sup> Pool Code <b>97903</b>		<sup>3</sup> Pool Name <b>WC-025 G-08 S253235G; LWR BONE SPRIN</b>	
<sup>4</sup> Property Code <b>324978</b>		<sup>5</sup> Property Name <b>DAUNTLESS 7 FED</b>			<sup>6</sup> Well Number <b>503H</b>
<sup>7</sup> OGRID No. <b>7377</b>		<sup>8</sup> Operator Name <b>EOG RESOURCES, INC.</b>			<sup>9</sup> Elevation <b>3493'</b>

<sup>10</sup>Surface Location

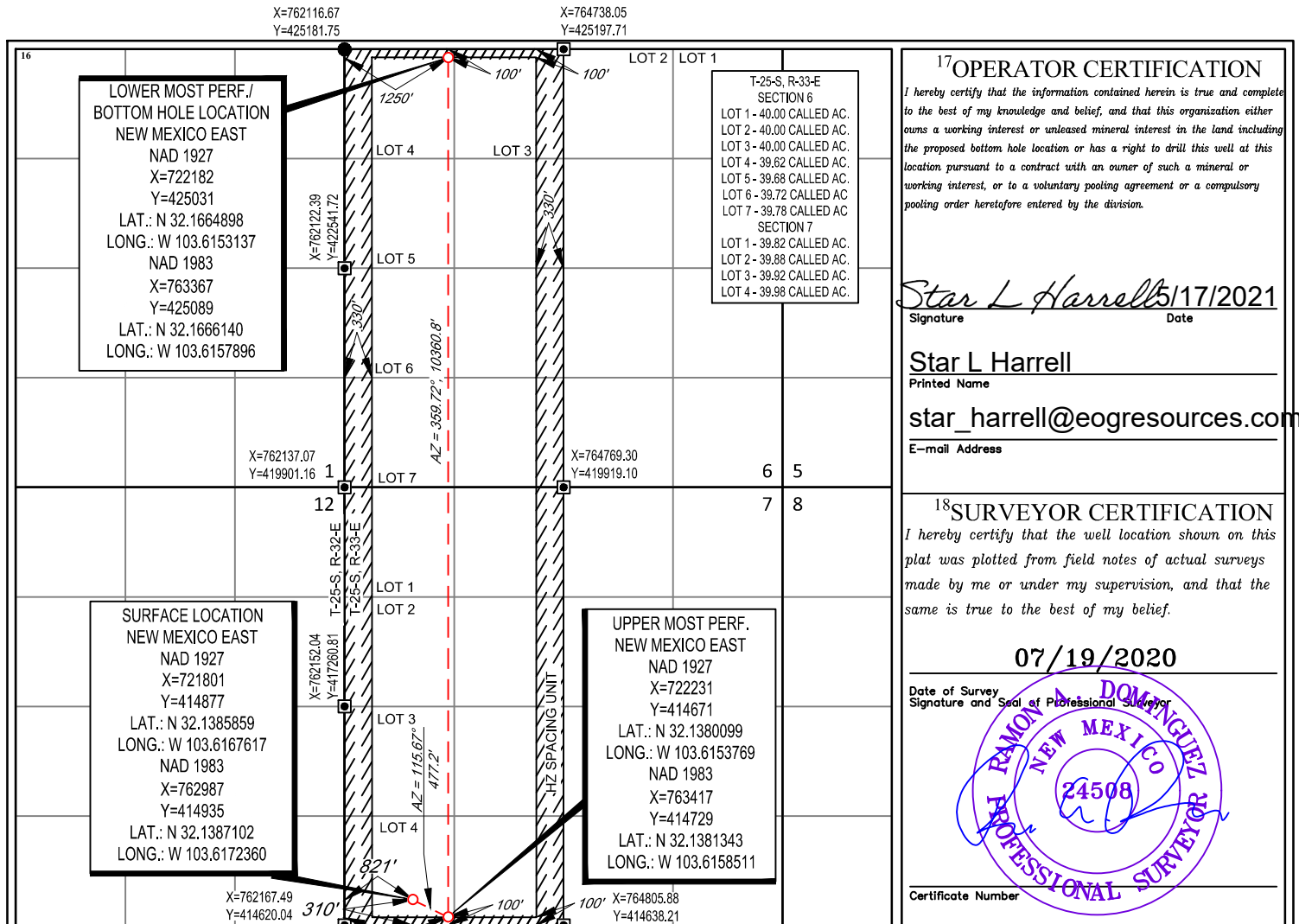
UL or lot no.	Section	Township	Range	Lot Idn	Feet from the	North/South line	Feet from the	East/West line	County
4	7	25-S	33-E	-	310'	SOUTH	821'	WEST	LEA

<sup>11</sup>Bottom Hole Location If Different From Surface

UL or lot no.	Section	Township	Range	Lot Idn	Feet from the	North/South line	Feet from the	East/West line	County
4	6	25-S	33-E	-	100'	NORTH	1250'	WEST	LEA

<sup>12</sup> Dedicated Acres <b>638.40</b>	<sup>13</sup> Joint or Infill	<sup>14</sup> Consolidation Code	<sup>15</sup> Order No.
--	-------------------------------	----------------------------------	-------------------------

No allowable will be assigned to this completion until all interests have been consolidated or a non-standard unit has been approved by the division.





**From:** [Lisa Youngblood](#)  
**To:** [McClure, Dean, EMNRD](#)  
**Subject:** RE: [EXTERNAL] Infill Wells - EOG  
**Date:** Monday, June 19, 2023 2:57:04 PM  
**Attachments:** [503H.pdf](#)

---

Hi Mr. McClure,

I apologize, I believe that well is going through the process of getting sundried to the 512H. Please see the 503H C-102 attached.

Thank you,

**Lisa Youngblood**

Regulatory Specialist



5509 Champions Drive | Midland, TX 79706  
Building 1, Room 3003  
Direct Line (432) 247-6331  
Cell Phone (432) 241-1259  
[Lisa\\_youngblood@eogresources.com](mailto:Lisa_youngblood@eogresources.com)

---

**From:** McClure, Dean, EMNRD <[Dean.McClure@emnrd.nm.gov](mailto:Dean.McClure@emnrd.nm.gov)>  
**Sent:** Friday, June 16, 2023 3:09 PM  
**To:** Lisa Youngblood <[Lisa\\_Youngblood@eogresources.com](mailto:Lisa_Youngblood@eogresources.com)>  
**Subject:** RE: [EXTERNAL] Infill Wells - EOG

**CAUTION:** This email originated from outside of the organization. Do not click links or open attachments unless you recognize the sender and know the content is safe.

Upon further review; with the consideration that the API number below is for the 30-025-51273 DAUNTLESS 7 FEDERAL #503H [324978], I am speculative that the #503H may be the well intended to be included below. If so, please provide me an amended form C-103 with the well number corrected including the C-102 for the #503H.

Dean McClure  
Petroleum Engineer, Oil Conservation Division  
New Mexico Energy, Minerals and Natural Resources Department  
(505) 469-8211

---

**From:** McClure, Dean, EMNRD  
**Sent:** Friday, June 16, 2023 1:58 PM  
**To:** Lisa Youngblood <[Lisa\\_Youngblood@eogresources.com](mailto:Lisa_Youngblood@eogresources.com)>  
**Subject:** RE: [EXTERNAL] Infill Wells - EOG

Ms. Youngblood,

Please provide the C-102 for the Dauntless 7 Fed #512H (30-025-51273)

Dean McClure  
Petroleum Engineer, Oil Conservation Division  
New Mexico Energy, Minerals and Natural Resources Department  
(505) 469-8211

---

**From:** Lisa Youngblood <[Lisa\\_Youngblood@eogresources.com](mailto:Lisa_Youngblood@eogresources.com)>  
**Sent:** Thursday, June 15, 2023 3:23 PM  
**To:** McClure, Dean, EMNRD <[Dean.McClure@emnrd.nm.gov](mailto:Dean.McClure@emnrd.nm.gov)>  
**Cc:** Engineer, OCD, EMNRD <[OCD.Engineer@emnrd.nm.gov](mailto:OCD.Engineer@emnrd.nm.gov)>  
**Subject:** [EXTERNAL] Infill Wells - EOG

CAUTION: This email originated outside of our organization. Exercise caution prior to clicking on links or opening attachments.

Good Afternoon Mr. McClure,

I have submitted two C-103Zs, under the following action ids to add the following infill wells to the approved commingle applications.

Action ID	Commingle #	Wells
228878	PLC-885	Dauntless 7 Fed 215H, 512H-515H, 521H,583H
228890	PLC-883	Ruthless 11 Fed Com 709H-713H, 727H-729H, 745H, 748H, 754H, 757H, 758H

Thank you,

**Lisa Youngblood**  
Regulatory Specialist



5509 Champions Drive | Midland, TX 79706  
Building 1, Room 3003  
Direct Line (432) 247-6331  
Cell Phone (432) 241-1259  
[Lisa\\_youngblood@eogresources.com](mailto:Lisa_youngblood@eogresources.com)

**District I**  
 1625 N. French Dr., Hobbs, NM 88240  
 Phone:(575) 393-6161 Fax:(575) 393-0720

**District II**  
 811 S. First St., Artesia, NM 88210  
 Phone:(575) 748-1283 Fax:(575) 748-9720

**District III**  
 1000 Rio Brazos Rd., Aztec, NM 87410  
 Phone:(505) 334-6178 Fax:(505) 334-6170

**District IV**  
 1220 S. St Francis Dr., Santa Fe, NM 87505  
 Phone:(505) 476-3470 Fax:(505) 476-3462

**State of New Mexico**  
**Energy, Minerals and Natural Resources**  
**Oil Conservation Division**  
**1220 S. St Francis Dr.**  
**Santa Fe, NM 87505**

CONDITIONS

Action 228878

**CONDITIONS**

Operator: EOG RESOURCES INC P.O. Box 2267 Midland, TX 79702	OGRID: 7377
	Action Number: 228878
	Action Type: [C-103] Sub. General Sundry (C-103Z)

**CONDITIONS**

Created By	Condition	Condition Date
dmcclure	Please review the content of the order to ensure you are familiar with the authorities granted and any conditions of approval. If you have any questions regarding this matter, please contact me.	6/27/2023