

| | | |
|----------------------------|---------------------------------------------------------------------|------------------------------------------|
| Well Name: HOYT | Well Location: T26N / R4W / SEC 5 / SWNW / 36.517877 / -107.2795887 | County or Parish/State: RIO ARRIBA / NM |
| Well Number: 1E | Type of Well: CONVENTIONAL GAS WELL | Allottee or Tribe Name: JICARILLA APACHE |
| Lease Number: JIC119 | Unit or CA Name: | Unit or CA Number: |
| US Well Number: 3003922101 | Well Status: Producing Gas Well | Operator: HILCORP ENERGY COMPANY |

Notice of Intent

Sundry ID: 2728898

| | |
|------------------------------------------------|------------------------------|
| Type of Submission: Notice of Intent | Type of Action: Recompletion |
| Date Sundry Submitted: 05/03/2023 | Time Sundry Submitted: 10:01 |
| Date proposed operation will begin: 05/17/2023 | |

Procedure Description: Hilcorp Energy Company requests permission to recompleate the subject well in the Mesaverde and downhole commingle with the existing Gallup & Dakota. Please see the attached procedure, current and proposed wellbore diagram, plat and natural gas management plan. A closed loop system will be used. A pre-reclamation site visit was held on 4/25/23 with Jicarilla & BIA. The reclamation plan is attached.

Surface Disturbance

Is any additional surface disturbance proposed?: No

NOI Attachments

Procedure Description

Hoyt_1E_MV_RC_NOI_Procedure_20230503095953.pdf

| | | |
|----------------------------|---------------------------------------------------------------------|------------------------------------------|
| Well Name: HOYT | Well Location: T26N / R4W / SEC 5 / SWNW / 36.517877 / -107.2795887 | County or Parish/State: RIO ARRIBA / NM |
| Well Number: 1E | Type of Well: CONVENTIONAL GAS WELL | Allottee or Tribe Name: JICARILLA APACHE |
| Lease Number: JIC119 | Unit or CA Name: | Unit or CA Number: |
| US Well Number: 3003922101 | Well Status: Producing Gas Well | Operator: HILCORP ENERGY COMPANY |

Operator

I certify that the foregoing is true and correct. Title 18 U.S.C. Section 1001 and Title 43 U.S.C. Section 1212, make it a crime for any person knowingly and willfully to make to any department or agency of the United States any false, fictitious or fraudulent statements or representations as to any matter within its jurisdiction. Electronic submission of Sundry Notices through this system satisfies regulations requiring a

| | |
|----------------------------------------------|----------------------------------|
| Operator Electronic Signature: KANDIS ROLAND | Signed on: MAY 03, 2023 10:00 AM |
| Name: HILCORP ENERGY COMPANY | |
| Title: Operation Regulatory Tech | |
| Street Address: 382 Road 3100 | |
| City: Farmington | State: NM |
| Phone: (505) 599-3400 | |
| Email address: kroland@hilcorp.com | |

Field

| | | |
|----------------------|--------|------|
| Representative Name: | | |
| Street Address: | | |
| City: | State: | Zip: |
| Phone: | | |
| Email address: | | |

BLM Point of Contact

| | |
|------------------------------|--------------------------------------|
| BLM POC Name: MATTHEW H KADE | BLM POC Title: Petroleum Engineer |
| BLM POC Phone: 5055647736 | BLM POC Email Address: MKADE@BLM.GOV |
| Disposition: Approved | Disposition Date: 05/03/2023 |
| Signature: Matthew Kade | |



HILCORP ENERGY COMPANY
HOYT 1E
MESA VERDE RECOMPLETION SUNDRY

JOB PROCEDURES

1. MIRU service rig and associated equipment; test BOP.
2. TOOH with **2-3/8"** tubing set at **8,268'**.
3. Set a **5-1/2"** plug at +/- **7,312'** to isolate the **Dakota & Gallup formations**.
4. RU Wireline. Run CBL. Record Top of Cement.
5. Load the hole and pressure test the casing.
6. N/D BOP, N/U frac stack and pressure test frac stack.
7. Perforate and frac the **Mesa Verde** formation (Top Perforation @ **5,596'**; Bottom Perforation @ **6,530'**).
8. Isolate frac stages with a plug.
9. Nipple down frac stack, nipple up BOP and test.
10. TIH with a mill and drill out top isolation plug and **Mesa Verde** frac plugs.
11. Clean out to **Dakota/Gallup** isolation plug.
12. Drill out **Dakota/Gallup** isolation plug and cleanout to PBTD of **8,406'**. TOOH.
13. TIH and land production tubing. Get a trimmingle **Dakota/Gallup/Mesa Verde** flow rate.



HILCORP ENERGY COMPANY
HOYT 1E
MESA VERDE RECOMPLETION SUNDRY

HOYT 1E - CURRENT WELLBORE SCHEMATIC

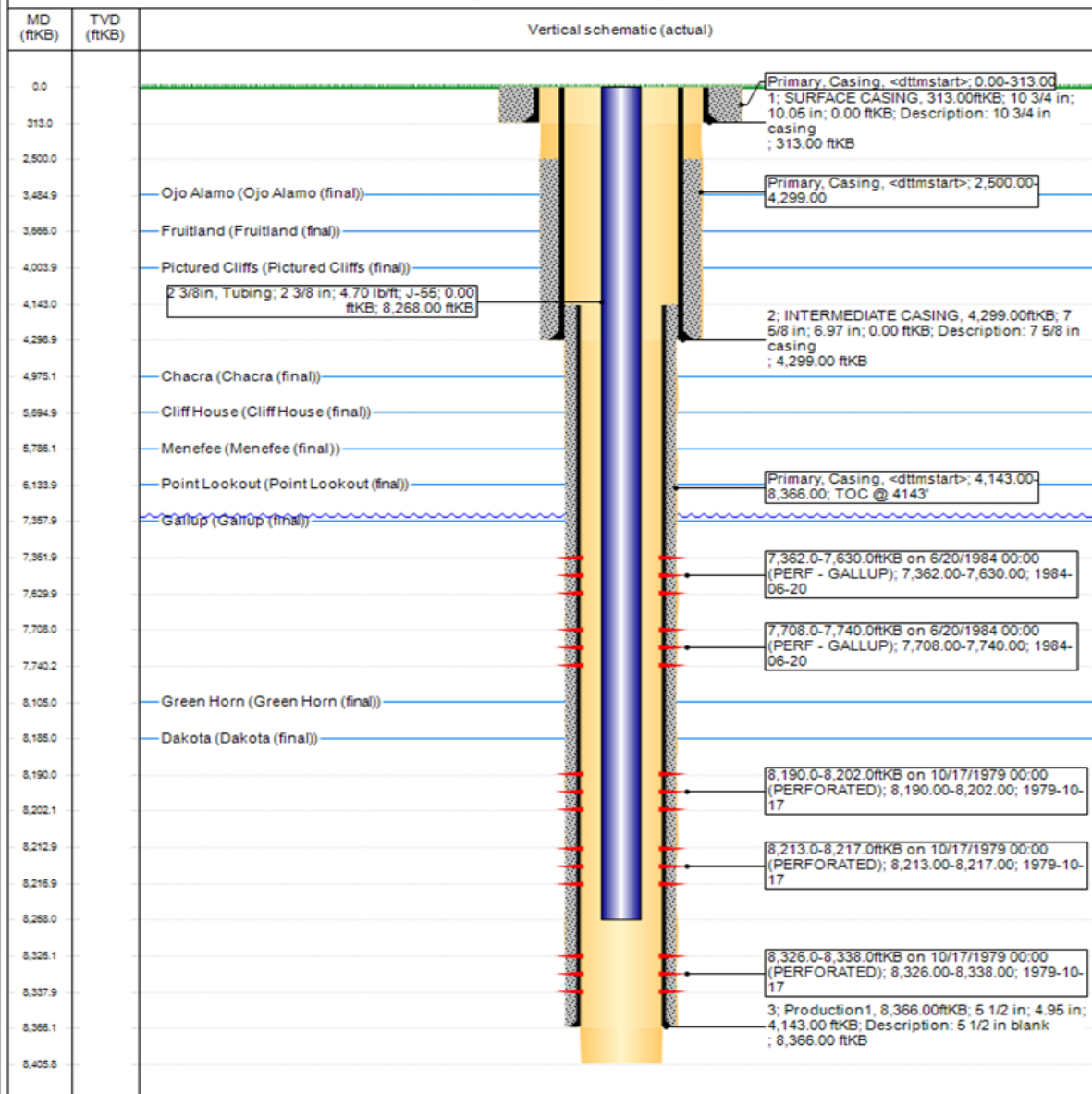


Current Schematic - Version 3

Well Name: HOYT 01E

| | | | | | |
|-----------------------------------|-------------------------------------------|----------------------------------|--------------------------------|--------------------------------|-------------------------------------|
| API / UWI 3003922101 | Surface Legal Location E-6-26N-4W | Field Name BASIN | Route 1407 | State/Province NEW MEXICO | Well Configuration Type Vertical |
| Ground Elevation (ft) 7,243.00 | Original KB/RT Elevation (ft) 7,256.00 | KB-Ground Distance (ft) 13.00 | KB-Casing Flange Distance (ft) | KB-Tubing Hanger Distance (ft) | |

Original Hole [Vertical]



www.peloton.com

Page 1/1

Report Printed: 4/11/2023



HILCORP ENERGY COMPANY
HOYT 1E
MESA VERDE RECOMPLETION SUNDRY

HOYT 1E - Proposed Schematic

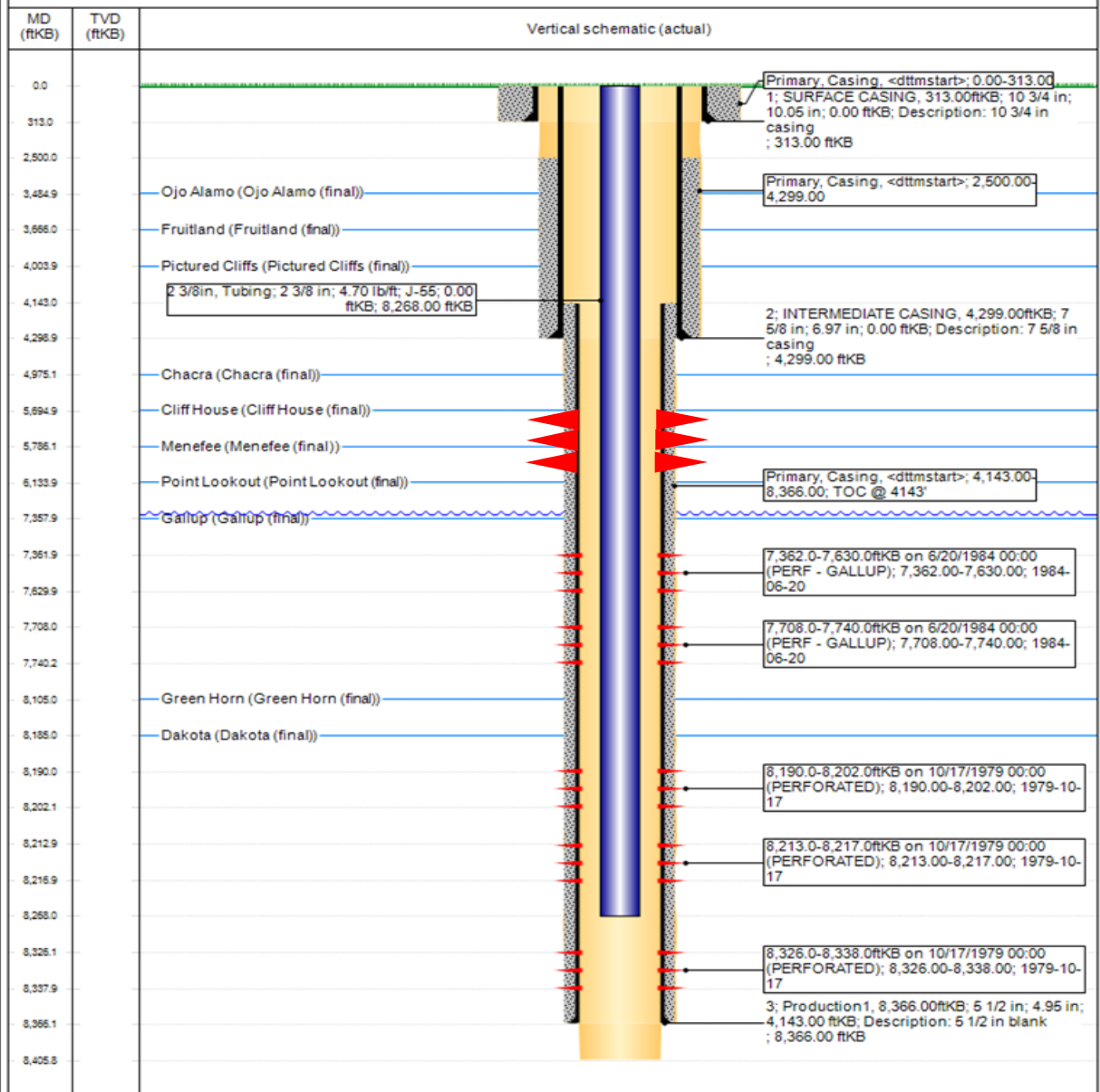


Proposed Schematic

Well Name: HOYT 01E

| | | | | | |
|-----------------------------------|-------------------------------------------|----------------------------------|--------------------------------|--------------------------------|-------------------------------------|
| API / UWI: 3003922101 | Surface Legal Location E-5-26N-4W | Field Name BASIN | Route 1407 | State/Province NEW MEXICO | Well Configuration Type Vertical |
| Ground Elevation (ft) 7,243.00 | Original KB/RT Elevation (ft) 7,256.00 | KB-Ground Distance (ft) 13.00 | KB-Casing Flange Distance (ft) | KB-Tubing Hanger Distance (ft) | |

Original Hole [Vertical]



www.peloton.com

Page 1/1

Report Printed: 4/11/2023

District I1625 N. French Dr., Hobbs, NM 88240
Phone:(575) 393-6161 Fax:(575) 393-0720**District II**811 S. First St., Artesia, NM 88210
Phone:(575) 748-1283 Fax:(575) 748-9720**District III**1000 Rio Brazos Rd., Aztec, NM 87410
Phone:(505) 334-6178 Fax:(505) 334-6170**District IV**1220 S. St Francis Dr., Santa Fe, NM 87505
Phone:(505) 476-3470 Fax:(505) 476-3462Form C-102
August 1, 2011

Permit 339468

State of New Mexico
Energy, Minerals and Natural
Resources
Oil Conservation Division
1220 S. St Francis Dr.
Santa Fe, NM 87505

WELL LOCATION AND ACREAGE DEDICATION PLAT

| | | |
|-------------------------------|--------------------------------------------|-------------------------------------------------|
| 1. API Number 30-039-22101 | 2. Pool Code 72319 | 3. Pool Name BLANCO-MESAVERDE (PRORATED GAS) |
| 4. Property Code 326082 | 5. Property Name HOYT | 6. Well No. 001E |
| 7. OGRID No. 372171 | 8. Operator Name HILCORP ENERGY COMPANY | 9. Elevation 7243 |

10. Surface Location

| | | | | | | | | | |
|---------------|--------------|-----------------|--------------|---------|-------------------|---------------|------------------|---------------|----------------------|
| UL - Lot E | Section 5 | Township 26N | Range 04W | Lot Idn | Feet From 1785 | N/S Line N | Feet From 837 | E/W Line W | County RIO ARriba |
|---------------|--------------|-----------------|--------------|---------|-------------------|---------------|------------------|---------------|----------------------|

11. Bottom Hole Location If Different From Surface

| | | | | | | | | | |
|-----------------------------------|---------------------|------------------------|---------------|---------|-----------|----------|-----------|----------|--------|
| UL - Lot | Section | Township | Range | Lot Idn | Feet From | N/S Line | Feet From | E/W Line | County |
| 12. Dedicated Acres 326.82 N/2 | 13. Joint or Infill | 14. Consolidation Code | 15. Order No. | | | | | | |

NO ALLOWABLE WILL BE ASSIGNED TO THIS COMPLETION UNTIL ALL INTERESTS HAVE BEEN CONSOLIDATED OR A NON-STANDARD UNIT HAS BEEN APPROVED BY THE DIVISION

| | | |
|--|-------------------------------------------------------------------------------------------------------------------------------------------------------------------------------------------------------------------------------------------------------------------------------------------------------------------------------------------------------------------------------------------------------------------------------------------------------------------------------------------------------------------|--|
| | OPERATOR CERTIFICATION | |
| | <i>I hereby certify that the information contained herein is true and complete to the best of my knowledge and belief, and that this organization either owns a working interest or unleased mineral interest in the land including the proposed bottom hole location(s) or has a right to drill this well at this location pursuant to a contract with an owner of such a mineral or working interest, or to a voluntary pooling agreement or a compulsory pooling order heretofore entered by the division.</i> | |
| | E-Signed By: Kandis Roland Title: Regulatory Tech Date: 5/3/23 | |
| | SURVEYOR CERTIFICATION | |
| | <i>I hereby certify that the well location shown on this plat was plotted from field notes of actual surveys made by me or under my supervision, and that the same is true and correct to the best of my belief.</i> | |
| | Surveyed By: James P. Leese Date of Survey: 5/28/1979 Certificate Number: 1463 | |

State of New Mexico
Energy, Minerals and Natural Resources Department

Submit Electronically
Via E-permitting

Oil Conservation Division
1220 South St. Francis Dr.
Santa Fe, NM 87505

NATURAL GAS MANAGEMENT PLAN

This Natural Gas Management Plan must be submitted with each Application for Permit to Drill (APD) for a new or recompleted well.

Section 1 – Plan Description **Effective May 25, 2021**

I. Operator: Hilcorp Energy Company **OGRID:** 372171 **Date:** 5/3/2023

II. Type: ☒ Original ☐ Amendment due to ☐ 19.15.27.9.D(6)(a) NMAC ☐ 19.15.27.9.D(6)(b) NMAC ☐ Other.

If Other, please describe: _____

III. Well(s): Provide the following information for each new or recompleted well or set of wells proposed to be drilled or proposed to be recompleted from a single well pad or connected to a central delivery point.

| Well Name | API | ULSTR | Footages | Anticipated Oil | Anticipated Gas MCF/D | Anticipated Produced Water BBL/D |
|-----------|------------|-------------|----------------------|-----------------|-----------------------|----------------------------------|
| Hoyt 1E | 3003922101 | E-05-26N-4W | 1785' FNL & 837' FWL | 1.9 | 358 | .5 |
| | | | | | | |

IV. Central Delivery Point Name: Ignacio Processing Plant [See 19.15.27.9(D)(1) NMAC]

V. Anticipated Schedule: Provide the following information for each new or recompleted well or set of wells proposed to be drilled or proposed to be recompleted from a single well pad or connected to a central delivery point.

| Well Name | API | Spud Date | TD Reached Date | Completion Commencement Date | Initial Flow Back Date | First Production Date |
|----------------|-------------------|------------|-----------------|------------------------------|------------------------|--------------------------|
| <u>Hoyt 1E</u> | <u>3003922101</u> | <u>N/A</u> | <u>N/A</u> | <u>N/A</u> | <u>N/A</u> | <u>Not Yet Scheduled</u> |
| | | | | | | |

VI. Separation Equipment: ☒ Attach a complete description of how Operator will size separation equipment to optimize gas capture.

VII. Operational Practices: ☒ Attach a complete description of the actions Operator will take to comply with the requirements of Subsection A through F of 19.15.27.8 NMAC.

VIII. Best Management Practices: ☒ Attach a complete description of Operator's best management practices to minimize venting during active and planned maintenance.

Section 2 – Enhanced Plan**EFFECTIVE APRIL 1, 2022**

Beginning April 1, 2022, an operator that is not in compliance with its statewide natural gas capture requirement for the applicable reporting area must complete this section.

☒ Operator certifies that it is not required to complete this section because Operator is in compliance with its statewide natural gas capture requirement for the applicable reporting area.

IX. Anticipated Natural Gas Production:

| Well | API | Anticipated Average Natural Gas Rate MCF/D | Anticipated Volume of Natural Gas for the First Year MCF |
|------|-----|--------------------------------------------|----------------------------------------------------------|
| | | | |
| | | | |

X. Natural Gas Gathering System (NGGS):

| Operator | System | ULSTR of Tie-in | Anticipated Gathering Start Date | Available Maximum Daily Capacity of System Segment Tie-in |
|----------|--------|-----------------|----------------------------------|-----------------------------------------------------------|
| | | | | |
| | | | | |

XI. Map. ☐ Attach an accurate and legible map depicting the location of the well(s), the anticipated pipeline route(s) connecting the production operations to the existing or planned interconnect of the natural gas gathering system(s), and the maximum daily capacity of the segment or portion of the natural gas gathering system(s) to which the well(s) will be connected.

XII. Line Capacity. The natural gas gathering system ☐ will ☐ will not have capacity to gather 100% of the anticipated natural gas production volume from the well prior to the date of first production.

XIII. Line Pressure. Operator ☐ does ☐ does not anticipate that its existing well(s) connected to the same segment, or portion, of the natural gas gathering system(s) described above will continue to meet anticipated increases in line pressure caused by the new well(s).

☐ Attach Operator's plan to manage production in response to the increased line pressure.

XIV. Confidentiality: ☐ Operator asserts confidentiality pursuant to Section 71-2-8 NMSA 1978 for the information provided in Section 2 as provided in Paragraph (2) of Subsection D of 19.15.27.9 NMAC, and attaches a full description of the specific information for which confidentiality is asserted and the basis for such assertion.

Section 3 - Certifications

Effective May 25, 2021

Operator certifies that, after reasonable inquiry and based on the available information at the time of submittal:

☒ Operator will be able to connect the well(s) to a natural gas gathering system in the general area with sufficient capacity to transport one hundred percent of the anticipated volume of natural gas produced from the well(s) commencing on the date of first production, taking into account the current and anticipated volumes of produced natural gas from other wells connected to the pipeline gathering system; or

☐ Operator will not be able to connect to a natural gas gathering system in the general area with sufficient capacity to transport one hundred percent of the anticipated volume of natural gas produced from the well(s) commencing on the date of first production, taking into account the current and anticipated volumes of produced natural gas from other wells connected to the pipeline gathering system.

If Operator checks this box, Operator will select one of the following:

Well Shut-In. ☐ Operator will shut-in and not produce the well until it submits the certification required by Paragraph (4) of Subsection D of 19.15.27.9 NMAC; or

Venting and Flaring Plan. ☐ Operator has attached a venting and flaring plan that evaluates and selects one or more of the potential alternative beneficial uses for the natural gas until a natural gas gathering system is available, including:

- (a) power generation on lease;
- (b) power generation for grid;
- (c) compression on lease;
- (d) liquids removal on lease;
- (e) reinjection for underground storage;
- (f) reinjection for temporary storage;
- (g) reinjection for enhanced oil recovery;
- (h) fuel cell production; and
- (i) other alternative beneficial uses approved by the division.

Section 4 - Notices

1. If, at any time after Operator submits this Natural Gas Management Plan and before the well is spud:

(a) Operator becomes aware that the natural gas gathering system it planned to connect the well(s) to has become unavailable or will not have capacity to transport one hundred percent of the production from the well(s), no later than 20 days after becoming aware of such information, Operator shall submit for OCD's approval a new or revised venting and flaring plan containing the information specified in Paragraph (5) of Subsection D of 19.15.27.9 NMAC; or

(b) Operator becomes aware that it has, cumulatively for the year, become out of compliance with its baseline natural gas capture rate or natural gas capture requirement, no later than 20 days after becoming aware of such information, Operator shall submit for OCD's approval a new or revised Natural Gas Management Plan for each well it plans to spud during the next 90 days containing the information specified in Paragraph (2) of Subsection D of 19.15.27.9 NMAC, and shall file an update for each Natural Gas Management Plan until Operator is back in compliance with its baseline natural gas capture rate or natural gas capture requirement.

2. OCD may deny or conditionally approve an APD if Operator does not make a certification, fails to submit an adequate venting and flaring plan which includes alternative beneficial uses for the anticipated volume of natural gas produced, or if OCD determines that Operator will not have adequate natural gas takeaway capacity at the time a well will be spud.

I certify that, after reasonable inquiry, the statements in and attached to this Natural Gas Management Plan are true and correct to the best of my knowledge and acknowledge that a false statement may be subject to civil and criminal penalties under the Oil and Gas Act.

| |
|--------------------------------------------------------------------------------------------------|
| Signature: <i>Kandis Roland</i> |
| Printed Name: Kandis Roland |
| Title: Operations/Regulatory Tech Sr. |
| E-mail Address: kroland@hilcorp.com |
| Date: 5/3/2023 |
| Phone: 713-757-5246 |
| OIL CONSERVATION DIVISION (Only applicable when submitted as a standalone form) |
| Approved By: |
| Title: |
| Approval Date: |
| Conditions of Approval: |

VI. Separation Equipment:

Hilcorp Energy Company (HEC or Operator) production facilities include separation equipment designed to efficiently separate gas from liquid phases to optimize gas capture based on projected and estimated volumes from the targeted pool of our recompleteness project. HEC will utilize flowback separation equipment and production separation equipment designed and built to industry specifications after the recompleteness to optimize gas capture and send gas to sales or flare based on analytical composition. HEC operates facilities that are typically one-well facilities. Production separation equipment is upgraded prior to well being completed, if determined to be undersized or inadequate. This equipment is already on-site and tied into our sales gas lines prior to the recompleteness operations.

VII. Operational Practices:

1. Subsection (A) Venting and Flaring of Natural Gas
 - HEC understands the requirements of NMAC 19.15.27.8 which outlines that the venting and flaring of natural gas during drilling, completion or production operations that constitutes waste as defined in 19.15.2 are prohibited.
2. Subsection (B) Venting and Flaring during drilling operations
 - This gas capture plan isn't for a well being drilled.
3. Subsection (C) Venting and flaring during completion or recompleteness
 - Flowlines will be routed for flowback fluids into a completion or storage tank and if feasible under well conditions, flare rather than vent and commence operation of a separator as soon as it is technically feasible for a separator to function.
 - At any point in the well life (completion, production, inactive) an audio, visual and olfactory inspection be performed at prescribed intervals (weekly or monthly) pursuant to Subsection D of 19.15.27.8 NMAC, to confirm that all production equipment is operating properly and there are no leaks or releases.
4. Subsection (D) Venting and flaring during production operations
 - At any point in the well life (completion, production, inactive) an audio, visual and olfactory inspection be performed at prescribed intervals (weekly or monthly) pursuant to Subsection D of 19.15.27.8 NMAC, to confirm that all production equipment is operating properly and there are no leaks or releases.
 - Monitor manual liquid unloading for wells on-site or in close proximity (<30 minutes' drive time), take reasonable actions to achieve a stabilized rate and pressure at the earliest practical time, and take reasonable actions to minimize venting to the maximum extent practicable.
 - HEC will not vent or flare except during the approved activities listed in NMAC 19.15.27.8 (D) 1-4.
5. Subsection (E) Performance standards
 - All tanks and separation equipment are designed for maximum throughput and pressure to minimize waste.
 - If a flare is utilized during production operations it will have a continuous pilot and is located more than 100 feet from any known well or storage tanks.
 - At any point in the well life (completion, production, inactive) an audio, visual and olfactory inspection be performed at prescribed intervals (weekly or monthly) pursuant to Subsection D of 19.15.27.8 NMAC, to confirm that all production equipment is operating properly and there are no leaks or releases.
6. Subsection (F) Measurement or estimation of vented and flared natural gas
 - Measurement equipment is installed to measure the volume of natural gas flared from process piping.
 - When measurement isn't practicable, estimation of vented and flared natural gas will be completed as noted in 19.15.27.8 (F) 5-6.

VIII. Best Management Practices:

1. Operator has adequate storage and takeaway capacity for wells it chooses to recomplete as the flowlines at the sites are already in place and tied into a gathering system.
2. Operator will flare rather than vent vessel blowdown gas when technically feasible during active and/or planned maintenance to equipment on-site.
3. Operator combusts natural gas that would otherwise be vented or flared, when technically feasible.
4. Operator will shut in wells in the event of a takeaway disruption, emergency situation, or other operations where venting or flaring may occur due to equipment failures.

Hilcorp Energy

HOYT 1E

36.517877, -107.279589

API-30-039-22101

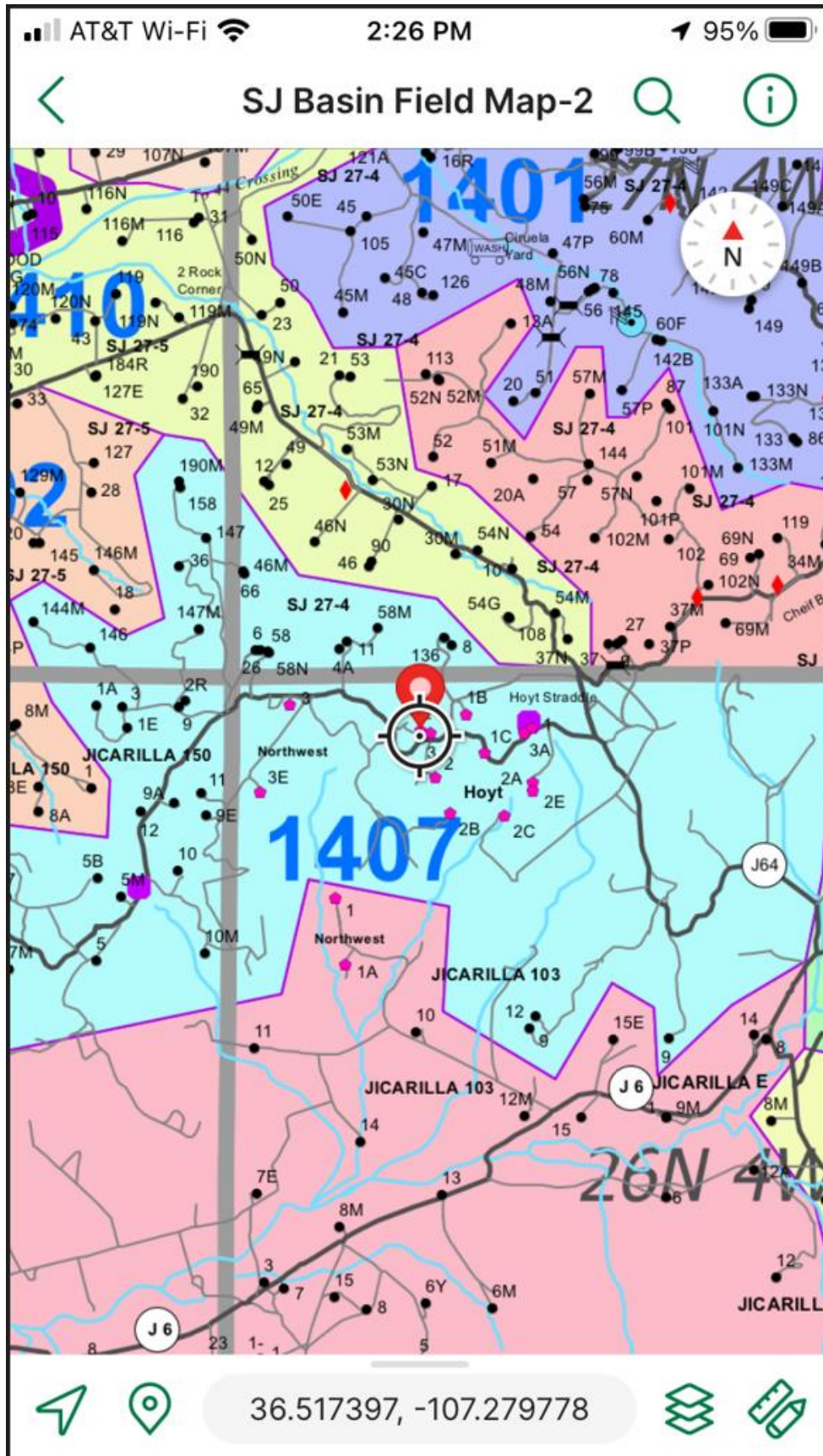
Jicarilla Lease #119

Recomplete Reclamation Plan

Onsite 4/25/26 with Kurt Sandoval, Alfred Vigil, Jason Sandoval,
Orlando Muniz, Donna Montoya.

1. Pick up and remove all trash, metal, cable, and any foreign debris within 200' of location.
2. Clean out water diversion at the cut slope of the location.
3. Create a diversion to deter driving around the location to maximize vegetation growth.
4. Remove the rig anchors.
5. Remove the concrete pad from the bottom of the fill slope and relocate to the washout on J-6.
6. Push fill from the north side of the location to the fill slope.
7. Rotate the oil tank for the load valve to face toward the inside of the location.
8. Paint all equipment Federal Juniper Green.
9. Re-seed all disturbed areas after the frac and well servicing activities have been completed. Drill where applicable at rate per acre defined by seed mix, and broadcast seed and harrow, at double the rate, all other disturbed areas. Mesa Mix seed mix will be used.





District I
1625 N. French Dr., Hobbs, NM 88240
Phone:(575) 393-6161 Fax:(575) 393-0720

District II
811 S. First St., Artesia, NM 88210
Phone:(575) 748-1283 Fax:(575) 748-9720

District III
1000 Rio Brazos Rd., Aztec, NM 87410
Phone:(505) 334-6178 Fax:(505) 334-6170

District IV
1220 S. St Francis Dr., Santa Fe, NM 87505
Phone:(505) 476-3470 Fax:(505) 476-3462

State of New Mexico
Energy, Minerals and Natural Resources
Oil Conservation Division
1220 S. St Francis Dr.
Santa Fe, NM 87505

CONDITIONS

Action 213564

CONDITIONS

| | |
|--------------------------------------------------------------------------------|---------------------------------------------------|
| Operator: HILCORP ENERGY COMPANY 1111 Travis Street Houston, TX 77002 | OGRID: 372171 |
| | Action Number: 213564 |
| | Action Type: [C-103] NOI Recompletion (C-103E) |

CONDITIONS

| | | |
|------------|---------------------|----------------|
| Created By | Condition | Condition Date |
| dmcclosure | ACCEPTED FOR RECORD | 7/3/2023 |