

Well Name	Well Number	US Well Number	Lease Number	Case Number	Operator
MALTESE 5_8	35H	3002548978	NMNM14164	NMNM14164	OXY USA
MALTESE 5_8	38H	3002548981	NMNM019628	NMNM019628	OXY USA
MALTESE 5_8	33H	3002548976	NMNM019628	NMNM019628	OXY USA
MALTESE 5_8	31H	3002548974	NMNM14164	NMNM14164	OXY USA
MALTESE 5_8	36H	3002548979	NMNM014164	NMNM014164	OXY USA
MALTESE 5_8	37H	3002548980	NMNM14164	NMNM14164	OXY USA
SAKER 6-7	33H	3002548934	NMNM14164	NMNM14164	OXY USA
SAKER 6-7	37H	3002548938	NMNM14164	NMNM14164	OXY USA
SAKER 6-7	38H	3002548939	NMNM14164	NMNM14164	OXY USA

Notice of Intent

Sundry ID: 2730625

Type of Submission: Notice of Intent

Date Sundry Submitted: 05/12/2023

Date proposed operation will begin: 06/01/2023

Type of Action: APD Change

Time Sundry Submitted: 07:26

Procedure Description: OXY USA INC. respectfully requests approval from our approved APD to change the following casing designs. There will be no change to our surface hole locations. Deepen the TD of the surface hole from the Top of the Rustler, to now the Base of the Rustler. Update the surface casing size from 10 ¾" to 13 3/8" Update the intermediate hole size to have flexibility between 12 ¼" casing and 8 ¾" casing to accommodate hole conditions or drilling operations. We also request pre-approval for a 4 string contingency plan dependent on hole conditions or drilling operations. Drill plans for both 3 string and 4 string casing strings attached. For the Maltese 5_8 Fed Com 38H we request that the pilot hole be omitted from our plans.

NOI Attachments

Procedure Description

- Maltese5_8FedCom38H_DrillPlan_3S_20230524093618.pdf
- Maltese5_8FedCom38H_DrillPlan_4SCont_20230524093618.pdf
- Saker6_7FedCom38H_DrillPlan_4SCont_20230512072533.pdf
- Saker6_7FedCom38H_DrillPlan_3S_20230512072532.pdf
- Saker6_7FedCom37H_DrillPlan_3S_20230512072530.pdf
- Saker6_7FedCom37H_DrillPlan_4SCont_20230512072532.pdf

Maltese5_8FedCom36H_DrillPlan_3S_20230512072533.pdf

Saker6_7FedCom33H_DrillPlan_4SCont_20230512072529.pdf

Maltese5_8FedCom36H_DrillPlan_4SCont_20230512072516.pdf

Maltese5_8FedCom37H_DrillPlan_4SCont_20230512072516.pdf

Saker6_7FedCom33H_DrillPlan_3S_20230512072519.pdf

Maltese5_8FedCom37H_DrillPlan_3S_20230512072516.pdf

Maltese5_8FedCom35H_DrillPlan_3S_20230512072513.pdf

Maltese5_8FedCom35H_DrillPlan_4SCont_20230512072514.pdf

Maltese_5_8_Fed_Com_Csg_Specs_for_3_String_Drill_Plan_20230512072502.pdf

Maltese_5_8_Fed_Com_Csg_Specs_for_4_String_Drill_Plan_20230512072502.pdf

Maltese5_8FedCom31H_DrillPlan_3S_20230512072501.pdf

Maltese5_8FedCom31H_DrillPlan_4SCont_20230512072501.pdf

Maltese5_8FedCom33H_DrillPlan_4SCont_20230512072503.pdf

Maltese5_8FedCom33H_DrillPlan_3S_20230512072502.pdf

Conditions of Approval

Additional

MALTESE_AND_SAKER____BATCH____2730625____COA_20230607111403.pdf

Operator

I certify that the foregoing is true and correct. Title 18 U.S.C. Section 1001 and Title 43 U.S.C. Section 1212, make it a crime for any person knowingly and willfully to make to any department or agency of the United States any false, fictitious or fraudulent statements or representations as to any matter within its jurisdiction. Electronic submission of Sundry Notices through this system satisfies regulations requiring a

Operator Electronic Signature: SARAH MCKINNEY

Name: OXY USA INCORPORATED

Title: Regulatory Analyst Sr

Street Address: 5 GREENWAY PLAZA SUITE 110

City: HOUSTON **State:** TX

Phone: (713) 215-7295

Email address: SARAH_MCKINNEY@OXY.COM

Signed on: MAY 24, 2023 09:36 AM

Field

Representative Name:

Street Address:

City: **State:** **Zip:**

Phone:

Email address:

BLM Point of Contact

BLM POC Name: KEITH P IMMATTY

BLM POC Phone: 5759884722

Disposition: Approved

Signature: Keith Immatty

BLM POC Title: ENGINEER

BLM POC Email Address: KIMMATTY@BLM.GOV

Disposition Date: 06/07/2023

CONFIDENTIAL



TenarisHydril Wedge 441®



Coupling	Pipe Body
Grade: P110-CY	Grade: P110-CY
Body: White	1st Band: White
1st Band: Grey	2nd Band: Grey
2nd Band: -	3rd Band: -
3rd Band: -	4th Band: -
	5th Band: -
	6th Band: -

Outside Diameter	5.500 in.	Wall Thickness	0.361 in.	Grade	P110-CY
Min. Wall Thickness	87.50 %	Drift	API Standard	Type	Casing
Connection OD Option	REGULAR				

Pipe Body Data

Geometry				Performance	
Nominal OD	5.500 in.	Wall Thickness	0.361 in.	Body Yield Strength	641 x1000 lb
Nominal Weight	20 lb/ft	Plain End Weight	19.83 lb/ft	Min. Internal Yield Pressure	12,640 psi
Drift	4.653 in.	OD Tolerance	API	SMYS	110,000 psi
Nominal ID	4.778 in.			Collapse Pressure	11,100 psi

Connection Data

Geometry		Performance		Make-Up Torques	
Connection OD	5.852 in.	Tension Efficiency	81.50 %	Minimum	15,000 ft-lb
Coupling Length	8.714 in.	Joint Yield Strength	522 x1000 lb	Optimum	16,000 ft-lb
Connection ID	4.778 in.	Internal Pressure Capacity	12,640 psi	Maximum	19,200 ft-lb
Make-up Loss	3.780 in.	Compression Efficiency	81.50 %	Operation Limit Torques	
Threads per inch	3.40	Compression Strength	522 x1000 lb	Operating Torque	32,000 ft-lb
Connection OD Option	Regular	Max. Allowable Bending	71 °/100 ft	Yield Torque	38,000 ft-lb
		External Pressure Capacity	11,100 psi	Buck-On	
				Minimum	19,200 ft-lb
				Maximum	20,700 ft-lb

Notes

This connection is fully interchangeable with:
Wedge 441® - 5.5 in. - 0.304 in.
Connections with Dopeless® Technology are fully compatible with the same connection in its Standard version

For the latest performance data, always visit our website: www.tenaris.com

Tenaris has issued this document for general information only, and the information in this document, including, without limitation, any pictures, drawings or designs ("Information") is not intended to constitute professional or any other type of advice or recommendation and is provided on an "as is" basis. No warranty is given. Tenaris has not independently verified any information –if any- provided by the user in connection with, or for the purpose of, the Information contained hereunder. The use of the Information is at user's own risk and Tenaris does not assume any responsibility or liability of any kind for any loss, damage or injury resulting from, or in connection with any Information contained hereunder or any use thereof. The Information in this document is subject to change or modification without notice. Tenaris's products and services are subject to Tenaris's standard terms and conditions or otherwise to the terms resulting from the respective contracts of sale or services, as the case may be, between petitioner and Tenaris. For more complete information please contact a Tenaris's representative or visit our website at www.tenaris.com . ©Tenaris 2021. All rights reserved.



5.500" 20.00 lb/ft P110-CY

TenarisHydril Wedge 461™ Matched Strength



Special Data Sheet

TH DS-20.0359

12 August 2020

Rev 00

Nominal OD	5.500 in.	Wall Thickness	0.361 in.	Grade	P110-CY
Min Wall Thickness	87.5%	Type	CASING	Connection OD Option	MATCHED STRENGTH

Pipe Body Data

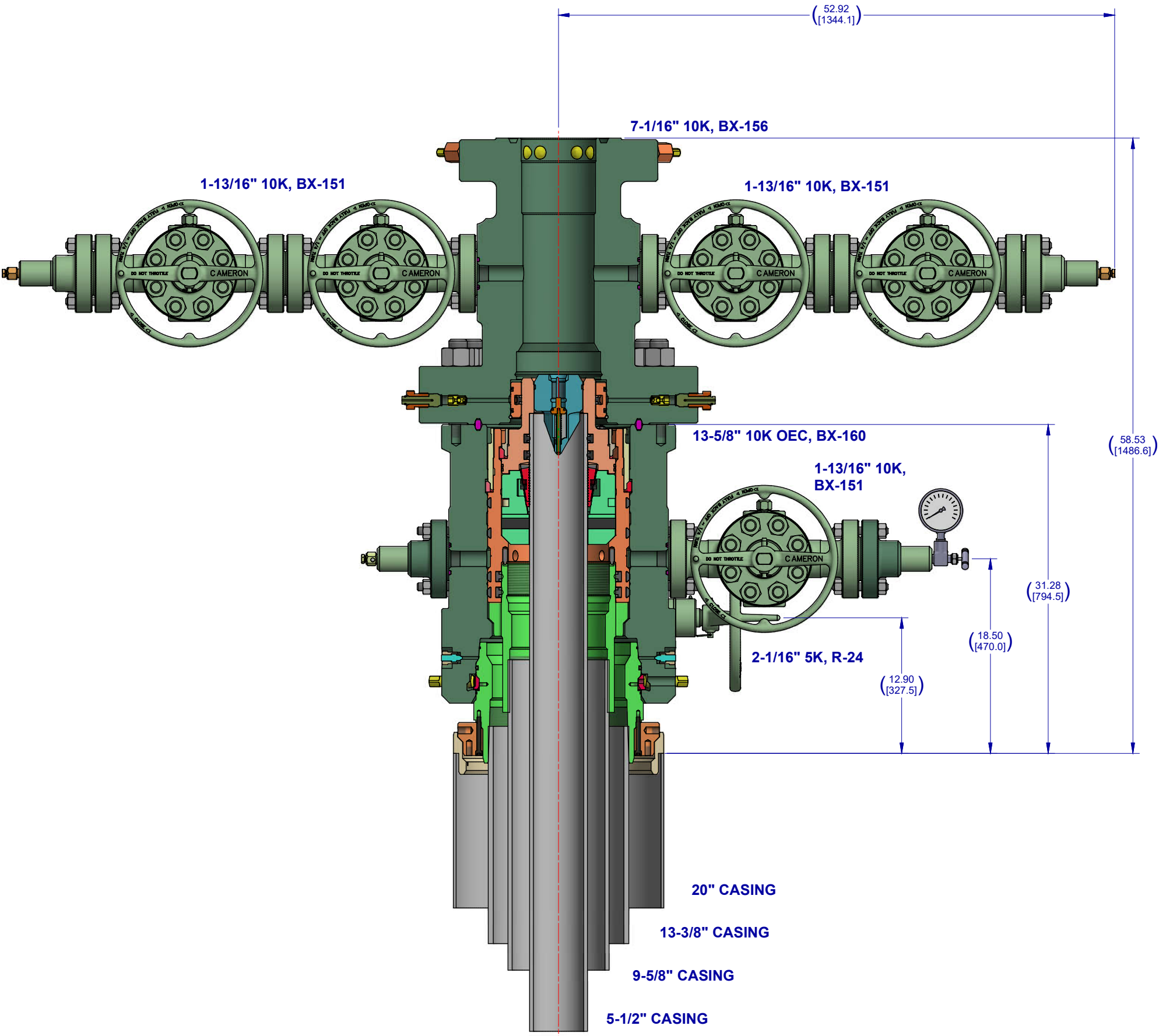
Geometry			Performance		
Nominal OD	5.500 in.	Nominal ID	4.778 in.	Body Yield Strength	641 x 1000 lbs
Nominal Weight	20.00 lbs/ft	Wall Thickness	0.361 in.	Internal Yield	12640 psi
Standard Drift Diameter	4.653 in.	Plain End Weight	19.83 lbs/ft	SMYS	110000 psi
Special Drift Diameter	N/A	OD Tolerance	API	Collapse Pressure	11110 psi

Connection Data

Geometry		Performance		Make-up Torques	
Matched Strength OD	6.050 in.	Tension Efficiency	100%	Minimum	17000 ft-lbs
Make-up Loss	3.775 in.	Joint Yield Strength	641 x 1000 lbs	Optimum	18000 ft-lbs
Threads per in.	3.40	Internal Yield	12640 psi	Maximum	21600 ft-lbs
Connection OD Option	MATCHED STRENGTH	Compression Efficiency	100%	Operational Limit Torques	
Coupling Length	7.714 in.	Compression Strength	641 x 1000 lbs	Operating Torque	32000 ft-lbs
		Bending	92 °/100 ft	Yield Torque	38000 ft-lbs
		Collapse	11110 psi	Buck-On Torques	
				Minimum	21600 ft-lbs
				Maximum	23100 ft-lbs

Notes


*If you need to use torque values that are higher than the maximum indicated, please contact a local Tenaris technical sales representative



Notes:

1. THIS IS A PROPOSAL DRAWING AND DIMENSIONS SHOWN ARE SUBJECT TO CHANGE DURING THE FINAL DESIGN PROCESS.

2. DIGITALLY ENABLED SOLUTIONS, CHOKES AND ESD'S AVAILABLE ON REQUEST

CONFIDENTIAL					
SURFACE TREATMENT	DO NOT SCALE		 A Schlumberger Company	SURFACE SYSTEMS	
	DRAWN BY: D. GOTTUNG	DATE 18 Feb 22		OXY 13-5/8" 10K ADAPT 16" X 10-3/4" X 7-5/8" X 5-1/2"	
MATERIAL & HEAT TREAT	CHECKED BY: D. GOTTUNG	DATE 18 Feb 22			
	APPROVED BY: D. GOTTUNG	DATE 18 Feb 22			
ESTIMATED WEIGHT: 6115.068 LBS 2773.748 KG	INITIAL USE B/M:		SHEET 1 of 1	SD-053434-94-12	REV: 01 INVENTOR - D

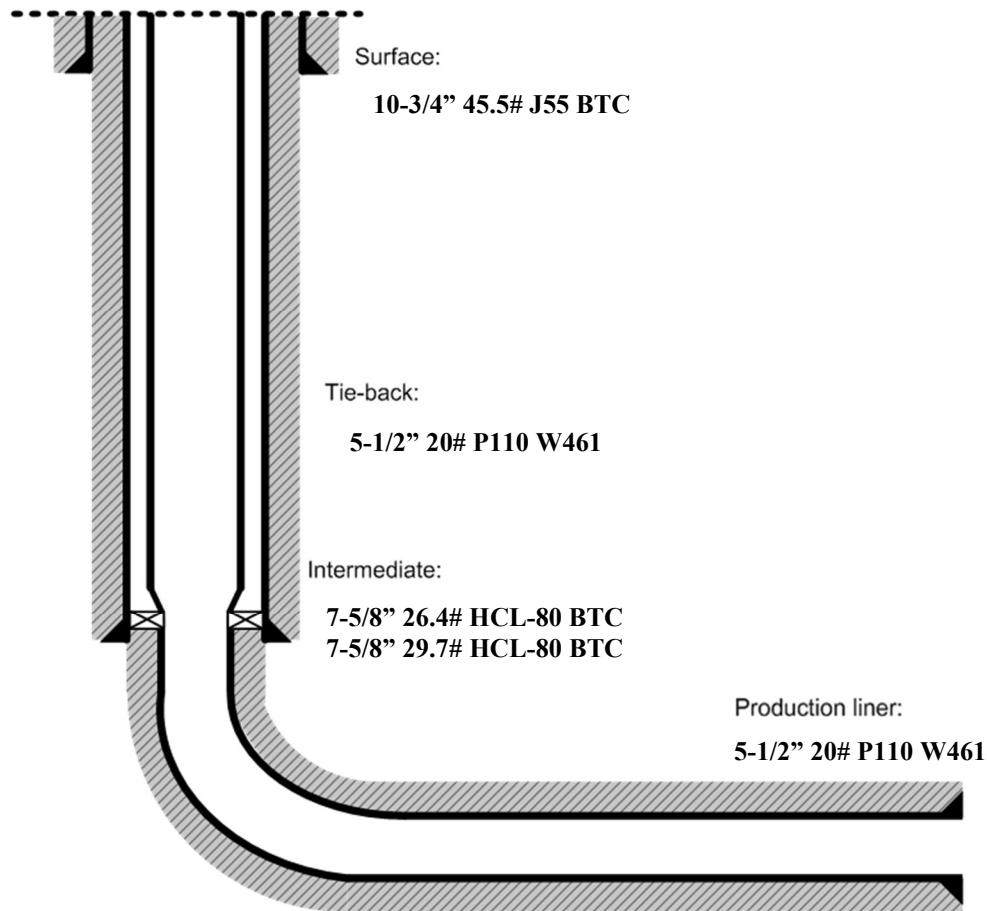
OXY USA WTP LP

Standard SL1 Tieback Details

Below is a summary that describes the general operational steps to drill and complete the well.

- Drill 14-3/4" hole x 10-3/4" casing for surface section. Cement to surface.
- Drill 9-7/8" hole x 7-5/8" casing for intermediate section. Cement to surface.
- Drill 6-3/4" hole x 5-1/2" liner for production section. Cement to top of liner, 100' inside 7-5/8" shoe.
- Release drilling rig from location.
- Move in workover rig and run a 5-1/2" 20# P110 Wedge 461 tie-back frac string and seal assembly. Tie into liner hanger Polished Bore Receptacle (PBR) with seal assembly.
- Pump hydraulic fracture job.
- Flowback and produce well.

General well schematic:





TenarisHydril Wedge 425[®]



Coupling	Pipe Body
Grade: P110-CY	Grade: P110-CY
Body: White	1st Band: White
1st Band: Grey	2nd Band: Grey
2nd Band: -	3rd Band: -
3rd Band: -	4th Band: -
	5th Band: -
	6th Band: -

Outside Diameter	5.500 in.	Wall Thickness	0.361 in.	Grade	P110-CY
Min. Wall Thickness	87.50 %	Pipe Body Drift	API Standard	Type	Casing
Connection OD Option	REGULAR				

Pipe Body Data

Geometry				Performance	
Nominal OD	5.500 in.	Wall Thickness	0.361 in.	Body Yield Strength	641 x1000 lb
Nominal Weight	20 lb/ft	Plain End Weight	19.83 lb/ft	Min. Internal Yield Pressure	12,640 psi
Drift	4.653 in.	OD Tolerance	API	SMYS	110,000 psi
Nominal ID	4.778 in.			Collapse Pressure	11,100 psi

Connection Data

Geometry		Performance		Make-Up Torques	
Connection OD	5.777 in.	Tension Efficiency	90 %	Minimum	15,700 ft-lb
Connection ID	4.734 in.	Joint Yield Strength	577 x1000 lb	Optimum	19,600 ft-lb
Make-up Loss	5.823 in.	Internal Pressure Capacity	12,640 psi	Maximum	21,600 ft-lb
Threads per inch	3.77	Compression Efficiency	90 %	Operation Limit Torques	
Connection OD Option	Regular	Compression Strength	577 x1000 lb	Operating Torque	29,000 ft-lb
		Max. Allowable Bending	82 °/100 ft	Yield Torque	36,000 ft-lb
		External Pressure Capacity	11,100 psi		

Notes

This connection is fully interchangeable with:
TORQ® SFW™ - 5.5 in. - 0.361 in.
Connections with Dopeless® Technology are fully compatible with the same connection in its Standard version

For the latest performance data, always visit our website: www.tenaris.com

Tenaris has issued this document for general information only, and the information in this document, including, without limitation, any pictures, drawings or designs ("Information") is not intended to constitute professional or any other type of advice or recommendation and is provided on an "as is" basis. No warranty is given. Tenaris has not independently verified any information –if any- provided by the user in connection with, or for the purpose of, the Information contained hereunder. The use of the Information is at user's own risk and Tenaris does not assume any responsibility or liability of any kind for any loss, damage or injury resulting from, or in connection with any Information contained hereunder or any use thereof. The Information in this document is subject to change or modification without notice. Tenaris's products and services are subject to Tenaris's standard terms and conditions or otherwise to the terms resulting from the respective contracts of sale or services, as the case may be, between petitioner and Tenaris. For more complete information please contact a Tenaris's representative or visit our website at www.tenaris.com . ©Tenaris 2021. All rights reserved.



TenarisHydril Wedge 441®



Coupling	Pipe Body
Grade: P110-CY	Grade: P110-CY
Body: White	1st Band: White
1st Band: Grey	2nd Band: Grey
2nd Band: -	3rd Band: -
3rd Band: -	4th Band: -
	5th Band: -
	6th Band: -

Outside Diameter	5.500 in.	Wall Thickness	0.361 in.	Grade	P110-CY
Min. Wall Thickness	87.50 %	Drift	API Standard	Type	Casing
Connection OD Option	REGULAR				

Pipe Body Data

Geometry				Performance	
Nominal OD	5.500 in.	Wall Thickness	0.361 in.	Body Yield Strength	641 x1000 lb
Nominal Weight	20 lb/ft	Plain End Weight	19.83 lb/ft	Min. Internal Yield Pressure	12,640 psi
Drift	4.653 in.	OD Tolerance	API	SMYS	110,000 psi
Nominal ID	4.778 in.			Collapse Pressure	11,100 psi

Connection Data

Geometry		Performance		Make-Up Torques	
Connection OD	5.852 in.	Tension Efficiency	81.50 %	Minimum	15,000 ft-lb
Coupling Length	8.714 in.	Joint Yield Strength	522 x1000 lb	Optimum	16,000 ft-lb
Connection ID	4.778 in.	Internal Pressure Capacity	12,640 psi	Maximum	19,200 ft-lb
Make-up Loss	3.780 in.	Compression Efficiency	81.50 %	Operation Limit Torques	
Threads per inch	3.40	Compression Strength	522 x1000 lb	Operating Torque	32,000 ft-lb
Connection OD Option	Regular	Max. Allowable Bending	71 °/100 ft	Yield Torque	38,000 ft-lb
		External Pressure Capacity	11,100 psi	Buck-On	
				Minimum	19,200 ft-lb
				Maximum	20,700 ft-lb

Notes

This connection is fully interchangeable with:
Wedge 441® - 5.5 in. - 0.304 in.
Connections with Dopeless® Technology are fully compatible with the same connection in its Standard version

For the latest performance data, always visit our website: www.tenaris.com

Tenaris has issued this document for general information only, and the information in this document, including, without limitation, any pictures, drawings or designs ("Information") is not intended to constitute professional or any other type of advice or recommendation and is provided on an "as is" basis. No warranty is given. Tenaris has not independently verified any information –if any- provided by the user in connection with, or for the purpose of, the Information contained hereunder. The use of the Information is at user's own risk and Tenaris does not assume any responsibility or liability of any kind for any loss, damage or injury resulting from, or in connection with any Information contained hereunder or any use thereof. The Information in this document is subject to change or modification without notice. Tenaris's products and services are subject to Tenaris's standard terms and conditions or otherwise to the terms resulting from the respective contracts of sale or services, as the case may be, between petitioner and Tenaris. For more complete information please contact a Tenaris's representative or visit our website at www.tenaris.com . ©Tenaris 2021. All rights reserved.



5.500" 20.00 lb/ft P110-CY

TenarisHydril Wedge 461™ Matched Strength



Special Data Sheet

TH DS-20.0359

12 August 2020

Rev 00

Nominal OD	5.500 in.	Wall Thickness	0.361 in.	Grade	P110-CY
Min Wall Thickness	87.5%	Type	CASING	Connection OD Option	MATCHED STRENGTH

Pipe Body Data

Geometry			Performance		
Nominal OD	5.500 in.	Nominal ID	4.778 in.	Body Yield Strength	641 x 1000 lbs
Nominal Weight	20.00 lbs/ft	Wall Thickness	0.361 in.	Internal Yield	12640 psi
Standard Drift Diameter	4.653 in.	Plain End Weight	19.83 lbs/ft	SMYS	110000 psi
Special Drift Diameter	N/A	OD Tolerance	API	Collapse Pressure	11110 psi

Connection Data

Geometry		Performance		Make-up Torques	
Matched Strength OD	6.050 in.	Tension Efficiency	100%	Minimum	17000 ft-lbs
Make-up Loss	3.775 in.	Joint Yield Strength	641 x 1000 lbs	Optimum	18000 ft-lbs
Threads per in.	3.40	Internal Yield	12640 psi	Maximum	21600 ft-lbs
Connection OD Option	MATCHED STRENGTH	Compression Efficiency	100%	Operational Limit Torques	
Coupling Length	7.714 in.	Compression Strength	641 x 1000 lbs	Operating Torque	32000 ft-lbs
		Bending	92 °/100 ft	Yield Torque	38000 ft-lbs
		Collapse	11110 psi	Buck-On Torques	
				Minimum	21600 ft-lbs
				Maximum	23100 ft-lbs

Notes

*If you need to use torque values that are higher than the maximum indicated, please contact a local Tenaris technical sales representative



U. S. Steel Tubular Products Product Information

7 5/8 29.70 lb (0.375) L80 HC BTC
8.125 Special Clearance Coupling

5/20/2019

Mechanical Properties		Coupling	Pipe Body
	Yield Strength		
	Minimum	80	80 ksi
	Maximum	95	95 ksi
	Tensile Strength		
	Minimum	95	95 ksi
Dimensions, Nominal			
	Outside Diameter	7.625	in.
	Wall	0.375	in.
	Inside Diameter	6.875	in.
	Drift		
	API	6.750	in.
	Nominal Linear Weight, T&C	29.70	lbs/ft
	Weight, Plain End	29.06	lbs/ft
	Pipe Cross Sectional Area	8.541	sq. in.
	Coupling Diameter		
	BTC	8.125	in.
Performance Ratings, Minimum			
	Collapse		
	Plain End	5,780	psi
	BTC	5,780	psi
	Internal Yield Pressure		
	Plain End	6,880	psi
	BTC	6,550	psi
	Yield Strength, Pipe Body	683	1,000 lbs
	Joint Strength		
	BTC	721	1,000 lbs

Legal Notice: All material contained in this publication is for general information only. This material should not therefore, be used or relied upon for any specific application without independent competent professional examination and verification of its accuracy, suitability and applicability. Anyone making use of this material does so at their own risk and assumes any and all liability resulting from such use. U. S. Steel disclaims any and all expressed or implied warranties of fitness for any general or particular application. USS Product Data Sheet 2019 rev28

U. S. Steel Tubular Products, Inc. - 460 Wildwood Forest Dr., Suite 300S, Spring, TX 77380

www.uss.com

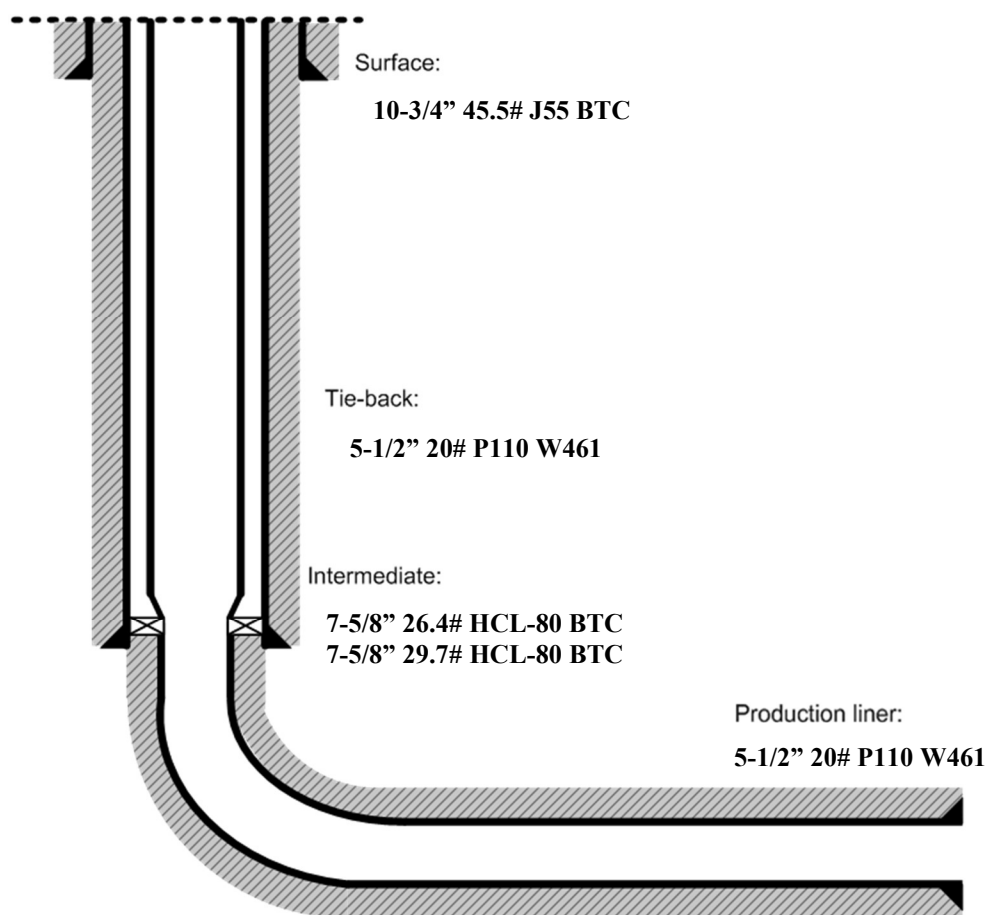
OXY USA WTP LP

Standard SL1 Tieback Details

Below is a summary that describes the general operational steps to drill and complete the well.

- Drill 14-3/4" hole x 10-3/4" casing for surface section. Cement to surface.
- Drill 9-7/8" hole x 7-5/8" casing for intermediate section. Cement to surface.
- Drill 6-3/4" hole x 5-1/2" liner for production section. Cement to top of liner, 100' inside 7-5/8" shoe.
- Release drilling rig from location.
- Move in workover rig and run a 5-1/2" 20# P110 Wedge 461 tie-back frac string and seal assembly. Tie into liner hanger Polished Bore Receptacle (PBR) with seal assembly.
- Pump hydraulic fracture job.
- Flowback and produce well.

General well schematic:



TUBULAR PARAMETERS		PIPE BODY PROPERTIES	
Nominal OD, (inch)	7.625	PE Weight, (lbs/ft)	25.56
Wall Thickness, (inch)	0.328	Nominal Weight, (lbs/ft)	26.40
Pipe Grade	L80 HC	Nominal ID, (inch)	6.969
Drift	Standard	Drift Diameter, (inch)	6.844
		Nominal Pipe Body Area, (sq inch)	7.519
CONNECTION PARAMETERS		Yield Strength in Tension, (klbs)	601
Connection OD (inch)	7.63	Min. Internal Yield Pressure, (psi)	6 020
Connection ID, (inch)	6.975	Collapse Pressure, (psi)	3 910
Make-Up Loss, (inch)	4.165		
Connection Critical Area, (sq inch)	2.520		
Yield Strength in Tension, (klbs)	347		
Yeld Strength in Compression, (klbs)	347		
Tension Efficiency	58%		
Compression Efficiency	58%		
Min. Internal Yield Pressure, (psi)	6 020		
Collapse Pressure, (psi)	3 910		
Uniaxial Bending (deg/100ft)	28.0		
MAKE-UP TORQUES			
Yield Torque, (ft-lb)	22 200		
Minimum Make-Up Torque, (ft-lb)	12 500		
Optimum Make-Up Torque, (ft-lb)	13 900		
Maximum Make-Up Torque, (ft-lb)	15 300		

Internal Pressure

100% API 5C3 / ISO

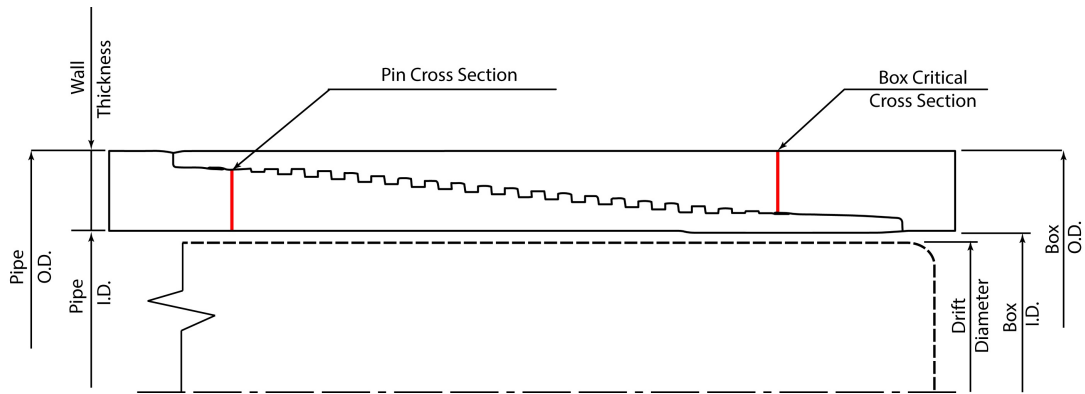
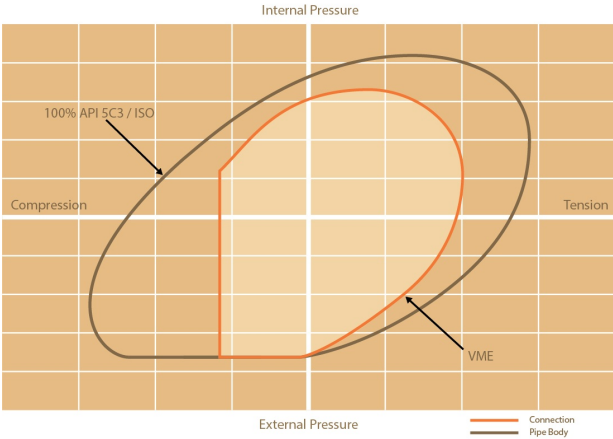
Compression

Tension

VME

External Pressure

Connection Pipe Body



NOTE: The content of this Technical Data Sheet is for general information only and does not guarantee performance or imply fitness for a particular purpose, which only a competent drilling professional can determine considering the specific installation and operation parameters. This information supersedes all prior versions for this connection. Information that is printed or downloaded is no longer controlled by TMK and might not be the latest information. Anyone using the information herein does so at their own risk. To verify that you have the latest technical information, please contact PAO "TMK" Technical Sales in Russia (Tel: +7 (495) 775-76-00, Email: techsales@tmk-group.com) and TMK IPSCO in North America (Tel: +1 (281)949-1044, Email: techsales@tmk-ipSCO.com).

Print date: 07/10/2018 20:11

TUBULAR PARAMETERS		PIPE BODY PROPERTIES	
Nominal OD, (inch)	7.625	PE Weight, (lbs/ft)	25.56
Wall Thickness, (inch)	0.328	Nominal Weight, (lbs/ft)	26.40
Pipe Grade	L80 HC	Nominal ID, (inch)	6.969
Drift	Standard	Drift Diameter, (inch)	6.844
		Nominal Pipe Body Area, (sq inch)	7.519
CONNECTION PARAMETERS		Yield Strength in Tension, (klbs)	601
Connection OD (inch)	7.79	Min. Internal Yield Pressure, (psi)	6 020
Connection ID, (inch)	6.938	Collapse Pressure, (psi)	3 910
Make-Up Loss, (inch)	6.029		
Connection Critical Area, (sq inch)	5.948		
Yield Strength in Tension, (klbs)	533		
Yeld Strength in Compression, (klbs)	533		
Tension Efficiency	89%		
Compression Efficiency	89%		
Min. Internal Yield Pressure, (psi)	6 020		
Collapse Pressure, (psi)	3 910		
Uniaxial Bending (deg/100ft)	42.7		
MAKE-UP TORQUES			
Yield Torque, (ft-lb)	22 600		
Minimum Make-Up Torque, (ft-lb)	15 000		
Optimum Make-Up Torque, (ft-lb)	16 500		
Maximum Make-Up Torque, (ft-lb)	18 200		

Internal Pressure

100% API 5C3 / ISO

Compression

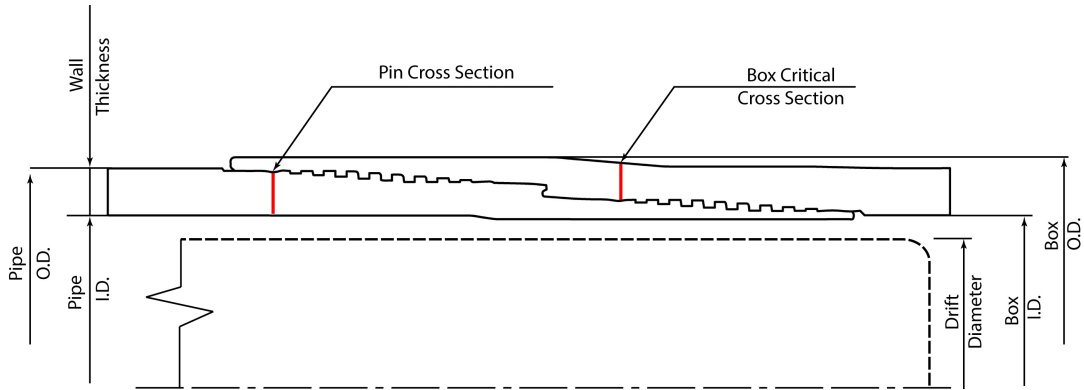
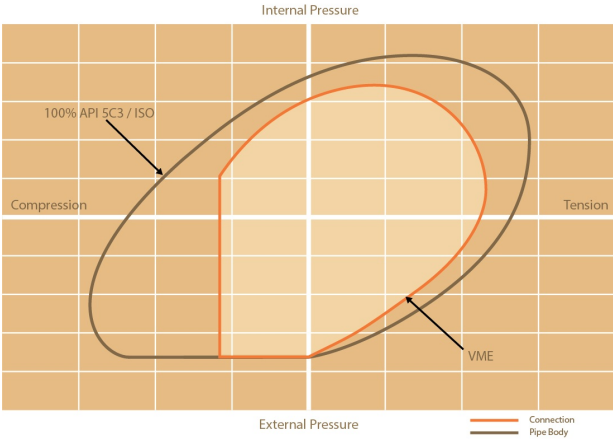
Tension

VME

External Pressure

— Connection

— Pipe Body



NOTE: The content of this Technical Data Sheet is for general information only and does not guarantee performance or imply fitness for a particular purpose, which only a competent drilling professional can determine considering the specific installation and operation parameters. This information supersedes all prior versions for this connection. Information that is printed or downloaded is no longer controlled by TMK and might not be the latest information. Anyone using the information herein does so at their own risk. To verify that you have the latest technical information, please contact PAO "TMK" Technical Sales in Russia (Tel: +7 (495) 775-76-00, Email: techsales@tmk-group.com) and TMK IPSCO in North America (Tel: +1 (281)949-1044, Email: techsales@tmk-ipSCO.com).

Print date: 07/10/2018 20:00



TenarisHydril Wedge 425[®]



Coupling	Pipe Body
Grade: P110-CY	Grade: P110-CY
Body: White	1st Band: White
1st Band: Grey	2nd Band: Grey
2nd Band: -	3rd Band: -
3rd Band: -	4th Band: -
	5th Band: -
	6th Band: -

Outside Diameter	5.500 in.	Wall Thickness	0.361 in.	Grade	P110-CY
Min. Wall Thickness	87.50 %	Pipe Body Drift	API Standard	Type	Casing
Connection OD Option	REGULAR				

Pipe Body Data

Geometry				Performance	
Nominal OD	5.500 in.	Wall Thickness	0.361 in.	Body Yield Strength	641 x1000 lb
Nominal Weight	20 lb/ft	Plain End Weight	19.83 lb/ft	Min. Internal Yield Pressure	12,640 psi
Drift	4.653 in.	OD Tolerance	API	SMYS	110,000 psi
Nominal ID	4.778 in.			Collapse Pressure	11,100 psi

Connection Data

Geometry		Performance		Make-Up Torques	
Connection OD	5.777 in.	Tension Efficiency	90 %	Minimum	15,700 ft-lb
Connection ID	4.734 in.	Joint Yield Strength	577 x1000 lb	Optimum	19,600 ft-lb
Make-up Loss	5.823 in.	Internal Pressure Capacity	12,640 psi	Maximum	21,600 ft-lb
Threads per inch	3.77	Compression Efficiency	90 %	Operation Limit Torques	
Connection OD Option	Regular	Compression Strength	577 x1000 lb	Operating Torque	29,000 ft-lb
		Max. Allowable Bending	82 °/100 ft	Yield Torque	36,000 ft-lb
		External Pressure Capacity	11,100 psi		

Notes

This connection is fully interchangeable with:
TORQ® SFW™ - 5.5 in. - 0.361 in.
Connections with Dopeless® Technology are fully compatible with the same connection in its Standard version

For the latest performance data, always visit our website: www.tenaris.com

Tenaris has issued this document for general information only, and the information in this document, including, without limitation, any pictures, drawings or designs ("Information") is not intended to constitute professional or any other type of advice or recommendation and is provided on an "as is" basis. No warranty is given. Tenaris has not independently verified any information –if any- provided by the user in connection with, or for the purpose of, the Information contained hereunder. The use of the Information is at user's own risk and Tenaris does not assume any responsibility or liability of any kind for any loss, damage or injury resulting from, or in connection with any Information contained hereunder or any use thereof. The Information in this document is subject to change or modification without notice. Tenaris's products and services are subject to Tenaris's standard terms and conditions or otherwise to the terms resulting from the respective contracts of sale or services, as the case may be, between petitioner and Tenaris. For more complete information please contact a Tenaris's representative or visit our website at www.tenaris.com . ©Tenaris 2021. All rights reserved.



7.625" 29.70 lb/ft L80-IC TenarisHydril
Wedge 425™

Special Data Sheet
TH DS-21.3633.00
18 October 2021

Nominal OD	7.625 in.	Wall Thickness	0.375 in.	Grade	L80-IC
Min Wall Thickness	90%	Type	CASING	Connection OD Option	REGULAR

Pipe Body Data

Geometry			Performance		
Nominal OD	7.625 in.	Nominal ID	6.875 in.	Body Yield Strength	683 x 1000 lbs
Nominal Weight	29.70 lbs/ft	Wall Thickness	0.375 in.	Internal Yield ¹	6890 psi
Standard Drift Diameter	6.750 in.	Plain End Weight	29.06 lbs/ft	SMYS	80000 psi
Special Drift Diameter	NA	OD Tolerance	API	Collapse Pressure	5900 psi

Connection Data

Geometry		Performance		Make-up Torques	
Connection OD	7.888 in.	Tension Efficiency	90%	Minimum	22500 ft-lbs
Connection ID	6.831 in.	Joint Yield Strength	615 x 1000 lbs	Optimum	25000 ft-lbs
Make-up Loss	5.646 in.	Internal Yield ¹	7080 psi	Maximum	27500 ft-lbs
Threads per in.	3.51	Compression Efficiency	90%	Operational Limit Torques	
Connection OD Option	REGULAR	Compression Strength	615 x 1000 lbs	Operating Torque	49000 ft-lbs
Critical Section Area	7.994 sq in.	Bending	43 °/100 ft	Yield Torque	61000 ft-lbs
		Collapse	5900 psi		

Notes

*If you need to use torque values that are higher than the maximum indicated, please contact a local Tenaris technical sales representative

1. Internal Yield Rating is based on 90% RBW
2. Important Note: In October 2019, TenarisHydril Wedge 625® RF™ was renamed TenarisHydril Wedge 425™. Product dimensions and properties remain identical and both connections are fully interchangeable.

Oxy USA Inc. - Saker 6_7 Fed Com 38H

Drill Plan

1. Geologic Formations

TVD of Target (ft):	12043	Pilot Hole Depth (ft):	
Total Measured Depth (ft):	22125	Deepest Expected Fresh Water (ft):	776

Delaware Basin

Formation	MD-RKB (ft)	TVD-RKB (ft)	Expected Fluids
Rustler	776	776	
Salado	1394	1394	Salt
Castile	3426	3426	Salt
Delaware	5288	5288	Oil/Gas/Brine
Bell Canyon	5336	5336	Oil/Gas/Brine
Cherry Canyon	6220	6220	Oil/Gas/Brine
Brushy Canyon	7596	7596	Losses
Bone Spring	8765	8765	Oil/Gas
Bone Spring 1st	9936	9935	Oil/Gas
Bone Spring 2nd	10405	10399	Oil/Gas
Bone Spring 3rd	11434	11412	Oil/Gas
Wolfcamp	11873	11758	Oil/Gas
Penn			Oil/Gas
Strawn			Oil/Gas

*H2S, water flows, loss of circulation, abnormal pressures, etc.

2. Casing Program

Section	Hole Size (in)	MD		TVD		Csg. OD (in)	Csg Wt. (ppf)	Grade	Conn.
		From (ft)	To (ft)	From (ft)	To (ft)				
Surface	17.5	0	1334	0	1334	13.375	54.5	J-55	BTC
Intermediate	12.25	0	11150	0	11131	7.625	29.7	L-80 HC	BTC
Production	6.75	10950	22125	10931	12043	5.5	20	P-110	Wedge 461

All casing strings will be tested in accordance with Onshore Oil and Gas Order #2 III.B.1.h

*Oxy requests the option to run production casing with DQX, TORQ DQW, Wedge 425, Wedge 461, and/or Wedge 441 connections to accommodate hole conditions or drilling operations.

*Oxy requests the option to run the 9.625" Intermediate I as a contingency string to be run only if severe hole conditions dictate an additional casing string necessary. This would make the planned 7.625" Casing the Intermediate II.

*Oxy requests the option to pivot from 12.25" Intermediate I to 9.875" Intermediate I once we've gained for Drilling experience to remove the need for a 4 String Contingency

All Casing SF Values will meet or exceed those below			
SF Collapse	SF Burst	Body SF Tension	Joint SF Tension
1.125	1.2	1.4	1.4

Annular Clearance Variance Request

As per the agreement reached in the Oxy/BLM face-to-face meeting on Feb 22, 2018, Oxy requests permission to allow deviation from the 0.422" annular clearance requirement from Onshore Order #2 under the following conditions:

1. Annular clearance to meet or exceed 0.422" between intermediate casing ID and production casing coupling only on the first 500' overlap between both casings.
2. Annular clearance less than 0.422" is acceptable for the curve and lateral portions of the production open hole section.

	Y or N
Is casing new? If used, attach certification as required in Onshore Order #1	Y
Does casing meet API specifications? If no, attach casing specification sheet.	Y
Is premium or uncommon casing planned? If yes attach casing specification sheet.	Y
Does the above casing design meet or exceed BLM's minimum standards? If not provide justification (loading assumptions, casing design criteria).	Y
Will the intermediate pipe be kept at a minimum 1/3 fluid filled to avoid approaching the collapse pressure rating of the casing?	Y
Is well located within Capitan Reef?	N
If yes, does production casing cement tie back a minimum of 50' above the Reef?	
Is well within the designated 4 string boundary.	
Is well located in SOPA but not in R-111-P?	N
If yes, are the first 2 strings cemented to surface and 3 rd string cement tied back 500' into previous casing?	
Is well located in R-111-P and SOPA?	N
If yes, are the first three strings cemented to surface?	
Is 2 nd string set 100' to 600' below the base of salt?	
Is well located in high Cave/Karst?	N
If yes, are there two strings cemented to surface?	
(For 2 string wells) If yes, is there a contingency casing if lost circulation occurs?	
Is well located in critical Cave/Karst?	N
If yes, are there three strings cemented to surface?	

3. Cementing Program

Section	Stage	Slurry:	Sacks	Yield (ft ³ /ft)	Density (lb/gal)	Excess:	TOC	Placement	Description
Surface	1	Surface - Tail	1393	1.33	14.8	100%	-	Circulate	Class C+Accel.
Int.	1	Intermediate 1S - Tail	1054	1.65	13.2	5%	7,846	Circulate	Class H+Accel., Disper., Salt
Int.	2	Intermediate 2S - Tail BH	2816	1.71	13.3	25%	-	Bradenhead	Class C+Accel.
Prod.	1	Production - Tail	844	1.38	13.2	25%	10,950	Circulate	Class H+Ret., Disper., Salt

Cement Top and Liner Overlap

- Oxy is requesting permission to have minimum fill of cement behind the 5-1/2" production liner to be 200 ft into previous casing string
 The reason for this is so that we can come back and develop shallower benches from the same 7.625"/7.827" mainbore in the future
- Cement will be brought to the top of this liner hanger

Offline Cementing

Oxy requests a variance to cement the 9.625" and/or 7.625" intermediate casing strings offline in accordance to the approved variance, EC Tran 461365.

The summarized operational sequence will be as follows:

Run casing as per normal operations. While running casing, conduct negative pressure test and confirm integrity of the float equipment (float collar and shoe).

Land casing.

Fill pipe with kill weight fluid, and confirm well is static.

If well Oxy requests a variance to cement the 9.625" and/or 7.625" intermediate casing strings offline in accordance to the approved variance, EC Tran 461365.

The summarized operational sequence will be as follows:

1. Run casing as per normal operations. While running casing, conduct negative pressure test and confirm integrity of the float equipment (float collar and shoe).
2. Land casing.
3. Fill pipe with kill weight fluid, and confirm well is static.
 - a. If well is not static notify BLM and kill well.
 - b. Once well is static notify BLM with intent to proceed with nipple down and offline cementing.
4. Set and pressure test annular packoff.
5. After confirmation of both annular barriers and internal barriers, nipple down BOP and install cap flange. If any barrier fails to test, the BOP stack will not be nipped down until after the cement job is completed.
6. Skid rig to next well on pad.
7. Confirm well is static before removing cap flange.
8. If well is not static notify BLM and kill well prior to cementing or nipping up for further remediation.
9. Install offline cement tool.
10. Rig up cement equipment.
 - a. Notify BLM prior to cement job.
11. Perform cement job.
12. Confirm well is static and floats are holding after cement job.
13. Remove cement equipment, offline cement tools and install night cap with pressure gauge for monitoring.

Oxy requests permission to adjust the CBL requirement after bradenhead cement jobs, on 7-5/8" intermediate casings, as per the agreement reached in the OXY/BLM meeting on September 5, 2019.

Three string wells:

- CBL will be required on one well per pad
- If the pumped volume of cement is less than permitted in the APD, BLM will be notified and a CBL may be run
- Echometer will be used after bradenhead cement job to determine TOC before pumping top-out cement

4. Pressure Control Equipment

BOP installed and tested before drilling which hole?	Size?	Min. Required WP	Type	✓	Tested to:	Deepest TVD Depth (ft) per Section:
12.25" Hole	13-5/8"	5M	Annular	✓	70% of working pressure	11131
		5M	Blind Ram	✓	250 psi / 5000 psi	
			Pipe Ram			
			Double Ram	✓		
			Other*			
6.75" Hole	13-5/8"	5M	Annular	✓	100% of working pressure	12043
		10M	Blind Ram	✓	250 psi / 10000 psi	
			Pipe Ram			
			Double Ram	✓		
			Other*			

*Specify if additional ram is utilized

Per BLM's Memorandum No. NM-2017-008: *Decision and Rationale for a Variance Allowing the Use of a 5M Annular Preventer with a 10M BOP Stack*, Oxy requests to employ a 5M annular with a 10M BOPE stack in the pilot and lateral sections of the well and will ensure that two barriers to flow are maintained at all times. Please see attached Well Control Plan.

BOP/BOPE will be tested by an independent service company to 250 psi low and the high pressure indicated above per Onshore Order 2 requirements. The System may be upgraded to a higher pressure but still tested to the working pressure listed in the table above. If the system is upgraded all the components installed will be functional and tested.

Pipe rams will be operationally checked each 24 hour period. Blind rams will be operationally checked on each trip out of the hole. These checks will be noted on the daily tour sheets. Other accessories to the BOP equipment will include a Kelly cock and floor safety valve (inside BOP) and choke lines and choke manifold.

	Formation integrity test will be performed per Onshore Order #2.
	On Exploratory wells or on that portion of any well approved for a 5M BOPE system or greater, a pressure integrity test of each casing shoe shall be performed. Will be tested in accordance with Onshore Oil and Gas Order #2 III.B.1.i.
	A variance is requested for the use of a flexible choke line from the BOP to Choke Manifold. See attached for specs and hydrostatic test chart.
Y	Are anchors required by manufacturer?
	A multibowl or a unionized multibowl wellhead system will be employed. The wellhead and connection to the BOPE will meet all API 6A requirements. The BOP will be tested per Onshore Order #2 after installation on the surface casing which will cover testing requirements for a maximum of 30 days. If any seal subject to test pressure is broken the system must be tested. We will test the flange connection of the wellhead with a test port that is directly in the flange. We are proposing that we will run the wellhead through the rotary prior to cementing surface casing as discussed with the BLM on October 8, 2015. See attached schematics.

BOP Break Testing Request

Oxy requests permission to adjust the BOP break testing requirements as per the agreement reached in the OXY/BLM meeting on September 5, 2019.

BOP break test under the following conditions:

- After a full BOP test is conducted
- When skidding to drill an intermediate section where ICP is set into the third Bone Spring or shallower.

If the kill line is broken prior to skid, two tests will be performed.

- 1) Wellhead flange, co-flex hose, kill line connections and upper pipe rams
- 2) Wellhead flange, HCR valve, check valve, upper pipe rams

If the kill line is not broken prior to skid, only one test will be performed.

- 1) Wellhead flange, co-flex hose, check valve, upper pipe rams

Oxy will use Cameron ADAPT wellhead system that uses an OEC top flange connection. This connection has been fully vetted and verified by API to Spec 6A and carries an API monogram.

5. Mud Program

Section	Depth - MD		Depth - TVD		Type	Weight (ppg)	Viscosity	Water Loss
	From (ft)	To (ft)	From (ft)	To (ft)				
Surface	0	1334	0	1334	Water-Based Mud	8.6 - 8.8	40-60	N/C
Intermediate	1334	11150	1334	11131	Saturated Brine-Based or Oil-Based Mud	8.0 - 10.0	35-45	N/C
Production	11150	22125	11131	12043	Water-Based or Oil-Based Mud	9.5 - 12.5	38-50	N/C

Sufficient mud materials to maintain mud properties and meet minimum lost circulation and weight increase requirements will be kept on location at all times. The following is a general list of products: Barite, Bentonite, Gypsum, Lime, Soda Ash, Caustic Soda, Nut Plug, Cedar Fiber, Cotton Seed Hulls, Drilling Paper, Salt Water Clay, CACL2. Oxy will use a closed mud system.

What will be used to monitor the loss or gain of fluid?	PVT/MD Totco/Visual Monitoring
---	--------------------------------

6. Logging and Testing Procedures

Logging, Coring and Testing.	
Yes	Will run GR from TD to surface (horizontal well – vertical portion of hole).
	Stated logs run will be in the Completion Report and submitted to the BLM.
No	Logs are planned based on well control or offset log information.
No	Drill stem test? If yes, explain
No	Coring? If yes, explain

Additional logs planned	Interval
No	Resistivity
No	Density
Yes	CBL
Yes	Mud log
No	PEX

7. Drilling Conditions

Condition	Specify what type and where?
BH Pressure at deepest TVD	7828 psi
Abnormal Temperature	No
BH Temperature at deepest TVD	177°F

Pump high viscosity sweeps as needed for hole cleaning. The mud system will be monitored visually/manually as well as with an electronic PVT. The necessary mud products for additional weight and fluid loss control will be on location at all times. Appropriately weighted mud will be used to isolate potential gas, oil, and water zones until such time as casing can be cemented into place for zonal

Hydrogen Sulfide (H2S) monitors will be installed prior to drilling out the surface shoe. If H2S is detected in concentrations greater than 100 ppm, the operator will comply with the provisions of Onshore Oil and Gas Order #6. If Hydrogen Sulfide is encountered, measured values and formations will be provided to the BLM.

N H2S is present

Y H2S Plan attached

8. Other facets of operation

	Yes/No
Will the well be drilled with a walking/skidding operation? If yes, describe. We plan to drill the 3 well pad in batch by section: all surface sections, intermediate sections and production sections. The wellhead will be secured with a night cap whenever the rig is not over the well.	Yes
Will more than one drilling rig be used for drilling operations? If yes, describe. Oxy requests the option to contract a Surface Rig to drill, set surface casing, and cement for this well. If the timing between rigs is such that Oxy would not be able to preset surface, the Primary Rig will MIRU and drill the well in its entirety per the APD. Please see the attached document for information on the spudder rig.	Yes

Total Estimated Cuttings Volume: 2314 bbls

Attachments

☒ Directional Plan

☒ H2S Contingency Plan

☒ Flex III Attachments

☒ Spudder Rig Attachment

☒ Premium Connection Specs

9. Company Personnel

Name	Title	Office Phone	Mobile Phone
Garrett Granier	Drilling Engineer	713-513-6633	832-265-0581
Derek Adam	Drilling Engineer Supervisor	713-366-5170	916-802-8873
Casey Martin	Drilling Superintendent	713-497-2530	337-764-4278
Kevin Threadgill	Drilling Manager	713-366-5958	361-815-0788

Oxy USA Inc. - Saker 6_7 Fed Com 38H

Drill Plan

1. Geologic Formations

TVD of Target (ft):	12043	Pilot Hole Depth (ft):	
Total Measured Depth (ft):	22125	Deepest Expected Fresh Water (ft):	776

Delaware Basin

Formation	MD-RKB (ft)	TVD-RKB (ft)	Expected Fluids
Rustler	776	776	
Salado	1394	1394	Salt
Castile	3426	3426	Salt
Delaware	5288	5288	Oil/Gas/Brine
Bell Canyon	5336	5336	Oil/Gas/Brine
Cherry Canyon	6220	6220	Oil/Gas/Brine
Brushy Canyon	7596	7596	Losses
Bone Spring	8765	8765	Oil/Gas
Bone Spring 1st	9936	9935	Oil/Gas
Bone Spring 2nd	10405	10399	Oil/Gas
Bone Spring 3rd	11434	11412	Oil/Gas
Wolfcamp	11873	11758	Oil/Gas
Penn			Oil/Gas
Strawn			Oil/Gas

*H2S, water flows, loss of circulation, abnormal pressures, etc.

2. Casing Program

Section	Hole Size (in)	MD		TVD		Csg. OD (in)	Csg Wt. (ppf)	Grade	Conn.
		From (ft)	To (ft)	From (ft)	To (ft)				
Surface	17.5	0	1334	0	1334	13.375	54.5	J-55	BTC
Salt	12.25	0	5388	0	5388	9.625	40	L-80 HC	BTC
Intermediate	8.75	0	6650	0	6631	7.625	26.4	L-80 HC	Wedge 425
Intermediate	8.75	6650	11150	6631	11131	7.625	29.7	L-80 HC	BTC-SC
Production	6.75	10950	22125	10931	12043	5.5	20	P-110	Wedge 461

All casing strings will be tested in accordance with Onshore Oil and Gas Order #2 III.B.1.h

*Oxy requests the option to run production casing with DQX, TORQ DQW, Wedge 425, Wedge 461, and/or Wedge 441 connections to accommodate hole conditions or drilling operations.

All Casing SF Values will meet or exceed those below			
SF Collapse	SF Burst	Body SF Tension	Joint SF Tension
1.125	1.2	1.4	1.4

Annular Clearance Variance Request

As per the agreement reached in the Oxy/BLM face-to-face meeting on Feb 22, 2018, Oxy requests permission to allow deviation from the 0.422" annular clearance requirement from Onshore Order #2 under the following conditions:

1. Annular clearance to meet or exceed 0.422" between intermediate casing ID and production casing coupling only on the first 500' overlap between both casings.
2. Annular clearance less than 0.422" is acceptable for the curve and lateral portions of the production open hole section.

	Y or N
Is casing new? If used, attach certification as required in Onshore Order #1	Y
Does casing meet API specifications? If no, attach casing specification sheet.	Y
Is premium or uncommon casing planned? If yes attach casing specification sheet.	Y
Does the above casing design meet or exceed BLM's minimum standards? If not provide justification (loading assumptions, casing design criteria).	Y
Will the intermediate pipe be kept at a minimum 1/3 fluid filled to avoid approaching the collapse pressure rating of the casing?	Y
Is well located within Capitan Reef?	N
If yes, does production casing cement tie back a minimum of 50' above the Reef?	
Is well within the designated 4 string boundary.	
Is well located in SOPA but not in R-111-P?	N
If yes, are the first 2 strings cemented to surface and 3 rd string cement tied back 500' into previous casing?	
Is well located in R-111-P and SOPA?	N
If yes, are the first three strings cemented to surface?	
Is 2 nd string set 100' to 600' below the base of salt?	
Is well located in high Cave/Karst?	N
If yes, are there two strings cemented to surface?	
(For 2 string wells) If yes, is there a contingency casing if lost circulation occurs?	
Is well located in critical Cave/Karst?	N
If yes, are there three strings cemented to surface?	

3. Cementing Program

Section	Stage	Slurry:	Sacks	Yield (ft ³ /ft)	Density (lb/gal)	Excess:	TOC	Placement	Description
Surface	1	Surface - Tail	1393	1.33	14.8	100%	-	Circulate	Class C+Accel.
Int.1	1	Intermediate - Tail	141	1.33	14.8	20%	4,888	Circulate	Class C+Accel.
Int.1	1	Intermediate - Lead	1245	1.73	12.9	50%	-	Circulate	Class Pozz+Ret.
Int. 2	1	Intermediate 1S - Tail	211	1.65	13.2	5%	7,846	Circulate	Class H+Accel., Disper., Salt
Int. 2	2	Intermediate 2S - Tail BH	523	1.71	13.3	25%	-	Bradenhead	Class C+Accel.
Prod.	1	Production - Tail	844	1.38	13.2	25%	10,950	Circulate	Class H+Ret., Disper., Salt

Cement Top and Liner Overlap

- Oxy is requesting permission to have minimum fill of cement behind the 5-1/2" production liner to be 200 ft into previous casing string
The reason for this is so that we can come back and develop shallower benches from the same 7.625"/7.827" mainbore in the future
- Cement will be brought to the top of this liner hanger

Offline Cementing

Oxy requests a variance to cement the 9.625" and/or 7.625" intermediate casing strings offline in accordance to the approved variance, EC Tran 461365.

The summarized operational sequence will be as follows:

Run casing as per normal operations. While running casing, conduct negative pressure test and confirm integrity of the float equipment (float collar and shoe).

Land casing.

Fill pipe with kill weight fluid, and confirm well is static.

If well Oxy requests a variance to cement the 9.625" and/or 7.625" intermediate casing strings offline in accordance to the approved variance, EC Tran 461365.

The summarized operational sequence will be as follows:

1. Run casing as per normal operations. While running casing, conduct negative pressure test and confirm integrity of the float equipment (float collar and shoe).
2. Land casing.
3. Fill pipe with kill weight fluid, and confirm well is static.
 - a. If well is not static notify BLM and kill well.
 - b. Once well is static notify BLM with intent to proceed with nipple down and offline cementing.
4. Set and pressure test annular packoff.
5. After confirmation of both annular barriers and internal barriers, nipple down BOP and install cap flange. If any barrier fails to test, the BOP stack will not be nipped down until after the cement job is completed.
6. Skid rig to next well on pad.
7. Confirm well is static before removing cap flange.
8. If well is not static notify BLM and kill well prior to cementing or nipping up for further remediation.
9. Install offline cement tool.
10. Rig up cement equipment.
 - a. Notify BLM prior to cement job.
11. Perform cement job.
12. Confirm well is static and floats are holding after cement job.
13. Remove cement equipment, offline cement tools and install night cap with pressure gauge for monitoring.

4. Pressure Control Equipment

BOP installed and tested before drilling which hole?	Size?	Min. Required WP	Type	✓	Tested to:	TVD Depth (ft) per Section:
12.25" Hole	13-5/8"	5M	Annular	✓	70% of working pressure	5388
		5M	Blind Ram	✓	250 psi / 5000 psi	
			Pipe Ram			
			Double Ram	✓		
			Other*			
8.75" Hole	13-5/8"	5M	Annular	✓	70% of working pressure	11131
		5M	Blind Ram	✓	250 psi / 5000 psi	
			Pipe Ram			
			Double Ram	✓		
			Other*			
6.75" Hole	13-5/8"	5M	Annular	✓	100% of working pressure	12043
		10M	Blind Ram	✓	250 psi / 10000 psi	
			Pipe Ram			
			Double Ram	✓		
			Other*			

*Specify if additional ram is utilized

Per BLM's Memorandum No. NM-2017-008: *Decision and Rationale for a Variance Allowing the Use of a 5M Annular Preventer with a 10M BOP Stack*, Oxy requests to employ a 5M annular with a 10M BOPE stack in the pilot and lateral sections of the well and will ensure that two barriers to flow are maintained at all times. Please see attached Well Control Plan.

BOP/BOPE will be tested by an independent service company to 250 psi low and the high pressure indicated above per Onshore Order 2 requirements. The System may be upgraded to a higher pressure but still tested to the working pressure listed in the table above. If the system is upgraded all the components installed will be functional and tested.

Pipe rams will be operationally checked each 24 hour period. Blind rams will be operationally checked on each trip out of the hole. These checks will be noted on the daily tour sheets. Other accessories to the BOP equipment will include a Kelly cock and floor safety valve (inside BOP) and choke lines and choke manifold.

	Formation integrity test will be performed per Onshore Order #2.
	On Exploratory wells or on that portion of any well approved for a 5M BOPE system or greater, a pressure integrity test of each casing shoe shall be performed. Will be tested in accordance with Onshore Oil and Gas Order #2 III.B.1.i.
	A variance is requested for the use of a flexible choke line from the BOP to Choke Manifold. See attached for specs and hydrostatic test chart.
Y	Are anchors required by manufacturer?
	A multibowl or a unionized multibowl wellhead system will be employed. The wellhead and connection to the BOPE will meet all API 6A requirements. The BOP will be tested per Onshore Order #2 after installation on the surface casing which will cover testing requirements for a maximum of 30 days. If any seal subject to test pressure is broken the system must be tested. We will test the flange connection of the wellhead with a test port that is directly in the flange. We are proposing that we will run the wellhead through the rotary prior to cementing surface casing as discussed with the BLM on October 8, 2015. See attached schematics.

BOP Break Testing Request

Oxy requests permission to adjust the BOP break testing requirements as per the agreement reached in the OXY/BLM meeting on September 5, 2019.

BOP break test under the following conditions:

- After a full BOP test is conducted
- When skidding to drill an intermediate section where ICP is set into the third Bone Spring or shallower.

If the kill line is broken prior to skid, two tests will be performed.

- 1) Wellhead flange, co-flex hose, kill line connections and upper pipe rams
- 2) Wellhead flange, HCR valve, check valve, upper pipe rams

If the kill line is not broken prior to skid, only one test will be performed.

- 1) Wellhead flange, co-flex hose, check valve, upper pipe rams

Oxy will use Cameron ADAPT wellhead system that uses an OEC top flange connection. This connection has been fully vetted and verified by API to Spec 6A and carries an API monogram.

5. Mud Program

Section	Depth		Depth - TVD		Type	Weight (ppg)	Viscosity	Water Loss
	From (ft)	To (ft)	From (ft)	To (ft)				
Surface	0	1334	0	1334	Water-Based Mud	8.6 - 8.8	40-60	N/C
Intermediate 1	1334	5388	1334	5388	Saturated Brine-Based or Oil-Based Mud	8.0 - 10.0	35-45	N/C
Intermediate 2	5388	11150	5388	11131	Water-Based or Oil-Based Mud	8.0 - 10.0	38-50	N/C
Production	11150	22125	11131	12043	Water-Based or Oil-Based Mud	9.5 - 12.5	38-50	N/C

Sufficient mud materials to maintain mud properties and meet minimum lost circulation and weight increase requirements will be kept on location at all times. The following is a general list of products: Barite, Bentonite, Gypsum, Lime, Soda Ash, Caustic Soda, Nut Plug, Cedar Fiber, Cotton Seed Hulls, Drilling Paper, Salt Water Clay, CACL2. Oxy will use a closed mud system.

What will be used to monitor the loss or gain of fluid?	PVT/MD Totco/Visual Monitoring
---	--------------------------------

6. Logging and Testing Procedures

Logging, Coring and Testing.	
Yes	Will run GR from TD to surface (horizontal well – vertical portion of hole).
	Stated logs run will be in the Completion Report and submitted to the BLM.
No	Logs are planned based on well control or offset log information.
No	Drill stem test? If yes, explain
No	Coring? If yes, explain

Additional logs planned	Interval
No	Resistivity
No	Density
Yes	CBL
Yes	Mud log
No	PEX

7. Drilling Conditions

Condition	Specify what type and where?
BH Pressure at deepest TVD	7828 psi
Abnormal Temperature	No
BH Temperature at deepest TVD	177°F

Pump high viscosity sweeps as needed for hole cleaning. The mud system will be monitored visually/manually as well as with an electronic PVT. The necessary mud products for additional weight and fluid loss control will be on location at all times. Appropriately weighted mud will be used to isolate potential gas, oil, and water zones until such time as casing can be cemented into place for zonal

Hydrogen Sulfide (H2S) monitors will be installed prior to drilling out the surface shoe. If H2S is detected in concentrations greater than 100 ppm, the operator will comply with the provisions of Onshore Oil and Gas Order #6. If Hydrogen Sulfide is encountered, measured values and formations will be provided to the BLM.

N H2S is present

Y H2S Plan attached

8. Other facets of operation

	Yes/No
Will the well be drilled with a walking/skidding operation? If yes, describe. We plan to drill the 3 well pad in batch by section: all surface sections, intermediate sections and production sections. The wellhead will be secured with a night cap whenever the rig is not over the well.	Yes
Will more than one drilling rig be used for drilling operations? If yes, describe. Oxy requests the option to contract a Surface Rig to drill, set surface casing, and cement for this well. If the timing between rigs is such that Oxy would not be able to preset surface, the Primary Rig will MIRU and drill the well in its entirety per the APD. Please see the attached document for information on the spudder rig.	Yes

Total Estimated Cuttings Volume: 1903 bbls

Attachments

☒ Directional Plan

☒ H2S Contingency Plan

☒ Flex III Attachments

☒ Spudder Rig Attachment

☒ Premium Connection Specs

9. Company Personnel

Name	Title	Office Phone	Mobile Phone
Garrett Granier	Drilling Engineer	713-513-6633	832-265-0581
Derek Adam	Drilling Engineer Supervisor	713-366-5170	916-802-8873
Casey Martin	Drilling Superintendent	713-497-2530	337-764-4278
Kevin Threadgill	Drilling Manager	713-366-5958	361-815-0788

District I
1625 N. French Dr., Hobbs, NM 88240
Phone:(575) 393-6161 Fax:(575) 393-0720
District II
811 S. First St., Artesia, NM 88210
Phone:(575) 748-1283 Fax:(575) 748-9720
District III
1000 Rio Brazos Rd., Aztec, NM 87410
Phone:(505) 334-6178 Fax:(505) 334-6170
District IV
1220 S. St Francis Dr., Santa Fe, NM 87505
Phone:(505) 476-3470 Fax:(505) 476-3462

State of New Mexico
Energy, Minerals and Natural Resources
Oil Conservation Division
1220 S. St Francis Dr.
Santa Fe, NM 87505

CONDITIONS

Action 225063

CONDITIONS

Operator: OXY USA INC P.O. Box 4294 Houston, TX 772104294	OGRID: 16696
	Action Number: 225063
	Action Type: [C-103] NOI Change of Plans (C-103A)

CONDITIONS

Created By	Condition	Condition Date
pkautz	None	7/26/2023