

Well Name: CANYON	Well Location: T25N / R11W / SEC 10 / SWSE / 36.411224 / -107.987869	County or Parish/State: SAN JUAN / NM
Well Number: 1	Type of Well: CONVENTIONAL GAS WELL	Allottee or Tribe Name: EASTERN NAVAJO
Lease Number: N00C14203607	Unit or CA Name: CANYON	Unit or CA Number: NMNM75919
US Well Number: 3004521247	Well Status: Abandoned	Operator: HILCORP ENERGY COMPANY

Subsequent Report

Sundry ID: 2743100

Type of Submission: Subsequent Report

Type of Action: Plug and Abandonment

Date Sundry Submitted: 07/27/2023

Time Sundry Submitted: 09:05

Date Operation Actually Began: 07/07/2023

Actual Procedure: The following well has been P&A'd as of 7/17/2023. Please see the attached plugging operations.

SR Attachments

- Actual Procedure
- HILCORP\_CANYON\_\_1\_CBL\_20230727090503.pdf
  - Canyon\_1\_P\_A\_SR\_Writeup\_20230727090444.pdf

Well Name: CANYON	Well Location: T25N / R11W / SEC 10 / SWSE / 36.411224 / -107.987869	County or Parish/State: SAN JUAN / NM
Well Number: 1	Type of Well: CONVENTIONAL GAS WELL	Allottee or Tribe Name: EASTERN NAVAJO
Lease Number: N00C14203607	Unit or CA Name: CANYON	Unit or CA Number: NMNM75919
US Well Number: 3004521247	Well Status: Abandoned	Operator: HILCORP ENERGY COMPANY

Operator

I certify that the foregoing is true and correct. Title 18 U.S.C. Section 1001 and Title 43 U.S.C. Section 1212, make it a crime for any person knowingly and willfully to make to any department or agency of the United States any false, fictitious or fraudulent statements or representations as to any matter within its jurisdiction. Electronic submission of Sundry Notices through this system satisfies regulations requiring a

Operator Electronic Signature: AMANDA WALKER

Signed on: JUL 27, 2023 09:05 AM

Name: HILCORP ENERGY COMPANY

Title: Operations/Regulatory Technician

Street Address: 1111 TRAVIS ST.

City: HOUSTONState: TX

Phone: (346) 237-2177

Email address: mwalker@hilcorp.com

Field

Representative Name:

Street Address:

City:State:Zip:

Phone:

Email address:

BLM Point of Contact

BLM POC Name: MATTHEW H KADE

BLM POC Title: Petroleum Engineer

BLM POC Phone: 5055647736

BLM POC Email Address: MKADE@BLM.GOV

Disposition: Accepted

Disposition Date: 07/27/2023

Signature: Matthew Kade

Canyon 1  
30-045-21247  
C00C14203607  
SR P&A

7/6/2023: MIRU. CK PRESSURES (SITP: 0 PSI SICP: 0 PSI SIICP: 0 PSI SIBHP: 0 PSI). ND WH. NU & FT BOP. SDFN

7/7/2023: CK PRESSURES (SITP: 0 PSI SICP: 0 PSI SIICP: 0 PSI SIBHP: 100 PSI). LOAD BS 5 BBL, LOAD TBG 4 BBL, PMP ON BS, PMP IN @ 900#. ATTEMPT TO PMP DWN TBG, 1.5 BBL PRESSURE UP 700#, WRK STUCK TBG. RIH W/SINKER BAR, TAG @ 3431', WORK THROUGH T/5576', POOH. RIH W/FREEPOINT, TST TOOL @ 3070', 100% FREE. RIH W/JET CUTTER. RIH & CUT TBG @ 5584'. LD 2 JTS. SDFN.

7/10/2023: CK PRESSURES (SITP: 0 PSI SICP: 0 PSI SIICP: 0 PSI SIBHP: 90 PSI). TOO H W/180 JTS. EST TOF @ 5584'. RIH W/FISHING TOOLS. TIE BACK TO DEAD LINE & TAG FISH @ 5581', LATCH ONTO FISH. TOO H W/83 STANDS. ENTIRE FISH RECOVERED. SDFN

7/11/2023: CK PRESSURES (SITP: 0 PSI SICP: 0 PSI SIICP: 0 PSI SIBHP: 90 PSI). TIH W/SCRAPER T/5820'. LD SCRAPER. TIH W/CIBP & SET @ 5780'. STING OUT, ATTEMPT PT, NO TST. RUN CBL F/5780' T/SURF. SDFN.

7/12/2023: CK PRESSURES (SITP: 0 PSI SICP: 0 PSI SIICP: 0 PSI SIBHP: 40 PSI). TIH T/5780'. CMT #1 PLUG, (DAKOTA) 13 SX 1.37 YIELD, 14.8# 6.64 GAL/SX BOC @ 5,780', TOC @ 5,580'. DISPLACE 21.5 BBL LD 9 JTS, WOC. REVERSE 30 BBL, TOO H 12 STANDS. TIH & TAG PLUG 1 @ 5601'. ATTEMPT PT, NO TST. CMT #2 PLUG, (GALLUP) 13 SX 1.37 YIELD, 14.8# 6.64 GAL/SX BOC @ 4,844', TOC @ 4,644'. DISPLACE 17.9 BBL LD 7 JTS, WOC 0.5 HRS. REVERSE 27 BBL, TOO H 12 STANDS. SDFN. **DUSTIN PORCH/BLM ON LOCATION TO WITNESS PLUGGING OPERATIONS.**

7/13/2023: CK PRESSURES (SITP: 0 PSI SICP: 0 PSI SIICP: 0 PSI SIBHP: 30 PSI). TIH & TAG PLUG @ 4640'. LD 23 JTS. ATTEMPT PT, NO TST. RIH & PERF @ 4010'. ATTEMPT TO EST RATE, NO RATE. **PHONE APPROVAL RECEIVED FROM MONICA KUEHLING/NMOCD AND DUSTIN PORCH/ONSITE BLM REP.** TIH T/4060'. CMT #3 PLUG, (MANCOS) 16 SX 1.37 YIELD, 14.8# 6.64 GAL/SX BOC @ 4,060', TOC @ 3,810'. DISPLACE 14.7 BBL LD 7 JTS, WOC. TOO H 60 STDS 2.375" 4.7# TBG, TIH TAG PLUG # 3 @ 3,936'. ATTEMPT PT, NO TST. CMT #3 PLUG, (REPUMP) (MANCOS) 7 SX 1.37 YIELD, 14.8# 6.64 GAL/SX BOC @ 3,936', TOC @ 3,836'. DISPLACE 14.8 BBL LD 4 JTS. SDFN **DUSTIN PORCH/BLM ON LOCATION TO WITNESS PLUGGING OPERATIONS.**

7/14/2023: CK PRESSURES (SITP: 0 PSI SICP: 0 PSI SIICP: 0 PSI SIBHP: 70 PSI). TIH & TAG PLUG @ 3841'. ATTEMPT PT, NO TST. CMT #4 PLUG, (MESA VERDE) 13 SX 1.37 YIELD, 14.8# 6.64 GAL/SX BOC @ 2,808', TOC @ 2,608'. DISPLACE 10 BBL LD 33 JTS, WOC. TAG PLUG @ 2740'. PT CSG T/750 PSI, GOOD TST. CMT #4 PLUG,(REPUMP) (MESA VERDE) 10 SX 1.37 YIELD, 14.8# 6.64 GAL/SX BOC @ 2,740', TOC @ 2,583', DISPLACE 10 BBL LD 19 JTS. CMT #5 PLUG, (CHACRA) 13 SX 1.37 YIELD, 14.8# 6.64 GAL/SX BOC @ 2,132', TOC @ 1,932', DISPLACE 7.4 BBL LD 25 JTS. CMT #6 PLUG, (PICTURED CLIFFS) 10 SX 1.37 YIELD, 14.8# 6.64 GAL/SX BOC @ 1,358', TOC @ 1,208', DISPLACE 4.6 BBL LD 16 JTS. RIH & PER @ 898'. EST RATE. TIH & SET CIBP @ 848'. ATTEMPT TO EST RATE, NO RATE. **PHONE APPROVAL RECEIVED FROM MONICA KUEHLING/NMOCD AND BILL DIERS/ONSITE BLM REP TO PMP INSIDE PLUG.** CMT #7 PLUG, (FRUITLAND COAL) 10 SX 1.37 YIELD, 14.8# 6.64 GAL/SX BOC @ 848', TOC @ 698', DISPLACE 4.6 BBL LD 6 JTS. SDFN. **BILL DIERS/BLM ON LOCATION TO WITNESS PLUGGING OPERATIONS.**

Canyon 1  
30-045-21247  
C00C14203607  
SR P&A

7/17/2023: CK PRESSURES (SITP: 0 PSI SICP: 0 PSI SIICP: 0 PSI SIBHP: 0 PSI). TIH & TAG PLUG @ 700'. RIH & PERF @ 640'. ATTEMPT TO EST RATE, NO RATE. **PHONE APPROVAL RECEIVED FROM MONICA KUEHLING/NMOCD AND BILL DIERS/BLM ONSITE REP TO PMP INSIDE PLUG.** CMT #8 PLUG, (SURFACE SHOE) 16 SX 1.37 YIELD, 14.8# 6.64 GAL/SX BOC @ 690', TOC @ 440'. DISPLACE 1.7 BBL LD 7 JTS, TOOH 7 STDS, WOC. TIH & TAG PLUG @ 552'. RIH & PERF @ 100' CIRC 13 BBLS. CMT #9 PLUG, (SURFACE) 41 SX 1.37 YIELD, 14.8# 6.64 GAL/SX BOC @ 100', TOC @ 0'. ND BOP. CUT OFF WH (TOC IN 4.5" 0'/TOC 8 5/8" 0') WELD ON P&A MARKER, FILL CASING AND CELLAR WITH 13 SX CMT. RDRR.

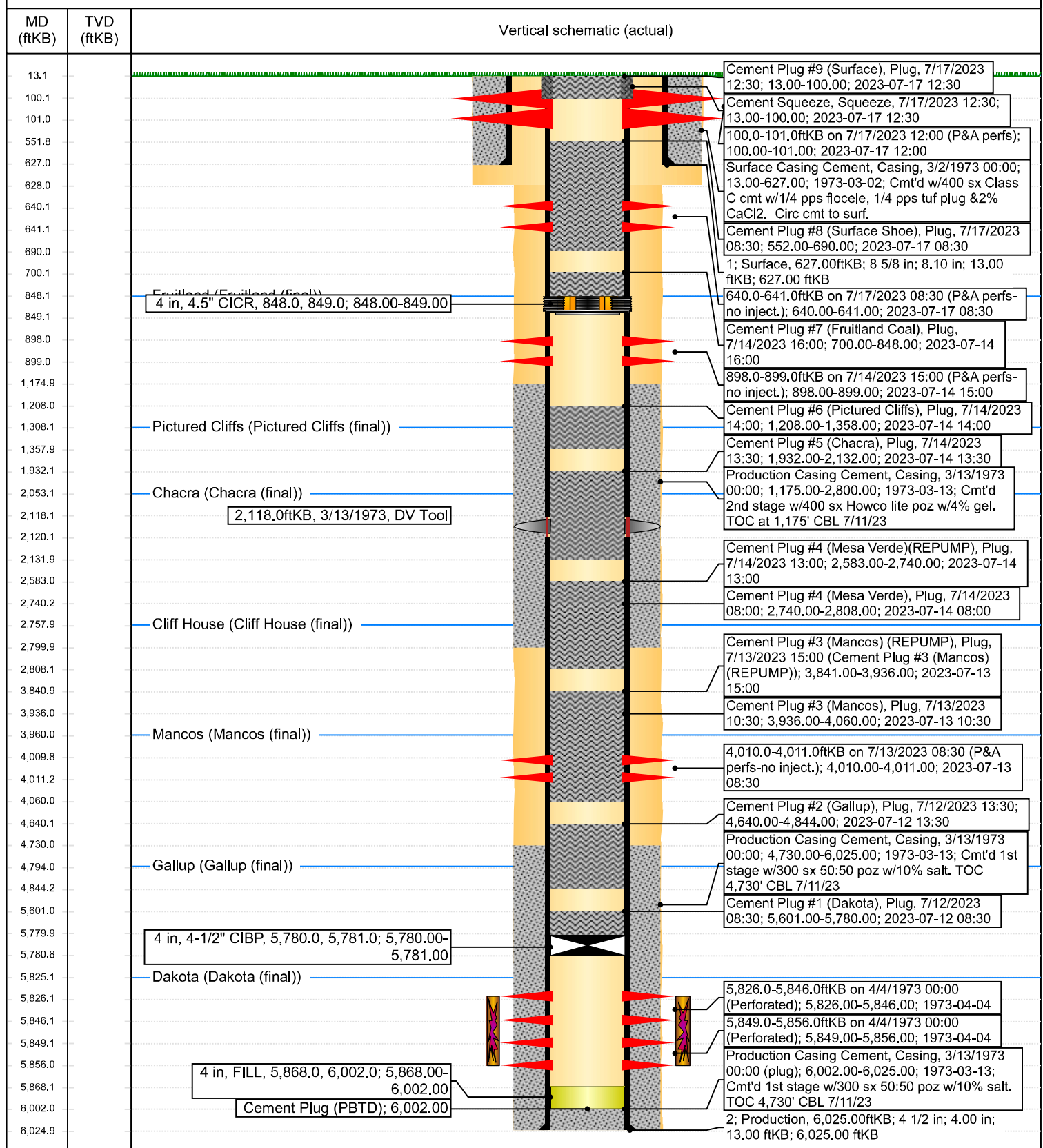


## Current Schematic - Version 3

Well Name: CANYON #1

API/UWI 3004521247	Surface Legal Location T25N-R11W-S10	Field Name Basin Dakota	Route 0609	State/Province New Mexico	Well Configuration Type Vertical
Ground Elevation (ft) 6,356.00	Original KB/RT Elevation (ft) 6,369.00	KB-Ground Distance (ft) 13.00	KB-Casing Flange Distance (ft)	KB-Tubing Hanger Distance (ft)	

## Original Hole [Vertical]



Mandi Walker

---

From: Kuehling, Monica, EMNRD  
Sent: Wednesday, July 12, 2023 11:07 AM  
To: Michael Wissing  
Cc: Roy Kimbel - (C); Mandi Walker; Cheryl Weston; Rustin Mikeska; Lee Murphy; Kenny Rennick - BLM  
Subject: RE: [EXTERNAL] Hilcorp P&A- NOI change request- Canyon 1 (3004521247)

CAUTION: External sender. DO NOT open links or attachments from UNKNOWN senders.

NMOCD approves below with prior approval from the BLM with caution at #9 Fruitland plug will need to be discussed prior to running. The gas on bradenhead may get cutoff before you reach the Fruitland formation.

Thank you

Monica Kuehling  
Compliance Officer Supervisor  
Deputy Oil and Gas Inspector  
New Mexico Oil Conservation Division  
North District

---

From: Michael Wissing  
Sent: Wednesday, July 12, 2023 9:20 AM  
To: Kuehling, Monica, EMNRD  
Cc: Roy Kimbel - (C) ; Mandi Walker ; Cheryl Weston ; Rustin Mikeska ; Lee Murphy ; Kenny Rennick  
Subject: [EXTERNAL] Hilcorp P&A- NOI change request- Canyon 1 (3004521247)

CAUTION: This email originated outside of our organization. Exercise caution prior to clicking on links or opening attachments.

Canyon #1  
API 3004521247

Good morning Monica,

Hilcorp requests the following changes to our P&A NOI procedure based on running about CBL last night...

1. Recovered all stuck prod tbg in wellbore (completed)
2. 4.5" CIBP set 5,780' (completed)
  - a. CBL (completed)

- b. Failed csg pressure test (completed)
- c. SIBP- 90 psi this morning
- 3. 150' balanced plug 5,630'-5,780' (Dakota perms 5,826')
- 4. 150' balanced plug 4,694'-4,844' (Gallup 4,794') **BLM COA**
- 5. 150' inside/outside plug 3,860'-4,010' (Mancos 3,960')
- 6. 150' balanced plug 2,658'-2,808' (Mesa Verde 2,758')
- 7. 179' balanced plug 1,953'-2,132' (DV tool 2,118', Chacra 2,053') **OCD COA**
- 8. 150' balanced plug 1,208'-1,358' (PC 1,308')
- 9. 150' inside/outside plug 748'-898' (FRC 848')
- 10. Monitor BH pressure- review with OCD
- 11. 113' inside/outside plug 527'-640' (csg shoe 627')
  - a. See CBL- clear csg at 527' to circulate cmt
- 12. Monitor BH pressure- review with OCD
- 13. 100' circulated plug Surface-113'
- 14. Cut whd and add marker

Thank you!

Michael Wissing

Ops Engr- P&A

Hilcorp Energy Com-  
pany

---

The information contained in this email message is confidential and may be legally privileged and is intended only for the use of the individual or entity named above. If you are not an intended recipient or if you have received this message in error, you are hereby notified that any dissemination, distribution, or copy of this email is strictly prohibited. If you have received this email in error, please immediately notify us by return email or telephone if the sender's phone number is listed above, then promptly and permanently delete this message.

While all reasonable care has been taken to avoid the transmission of viruses, it is the responsibility of the recipient to ensure that the onward transmission, opening, or use of this message and any attachments will not adversely affect its systems or data. No responsibility is accepted by the company in this regard and the recipient should carry out such virus and other checks as it considers appropriate.

---

**District I**  
1625 N. French Dr., Hobbs, NM 88240  
Phone:(575) 393-6161 Fax:(575) 393-0720  
**District II**  
811 S. First St., Artesia, NM 88210  
Phone:(575) 748-1283 Fax:(575) 748-9720  
**District III**  
1000 Rio Brazos Rd., Aztec, NM 87410  
Phone:(505) 334-6178 Fax:(505) 334-6170  
**District IV**  
1220 S. St Francis Dr., Santa Fe, NM 87505  
Phone:(505) 476-3470 Fax:(505) 476-3462

State of New Mexico  
Energy, Minerals and Natural Resources  
Oil Conservation Division  
1220 S. St Francis Dr.  
Santa Fe, NM 87505

CONDITIONS

Action 245138

CONDITIONS

Operator: HILCORP ENERGY COMPANY 1111 Travis Street Houston, TX 77002	OGRID: 372171
	Action Number: 245138
	Action Type: [C-103] Sub. Plugging (C-103P)

CONDITIONS

Created By	Condition	Condition Date
john.harrison	Accepted for record - NMOCD 7/27/23. Well P&A'd 7/17/23	7/27/2023