

| | | |
|--------------------------------------|--|--|
| Well Name: SAN JUAN 27-4 UNIT | Well Location: T27N / R4W / SEC 31 / SWSW / 36.524841 / -107.296158 | County or Parish/State: RIO ARRIBA / NM |
| Well Number: 58 | Type of Well: CONVENTIONAL GAS WELL | Allottee or Tribe Name: |
| Lease Number: NMSF080670 | Unit or CA Name: SAN JUAN 27-4 UNIT--DK | Unit or CA Number: NMNM78408B |
| US Well Number: 3003920386 | Well Status: Producing Gas Well | Operator: HILCORP ENERGY COMPANY |

Notice of Intent

Sundry ID: 2738308

Type of Submission: Notice of Intent

Type of Action: Recompletion

Date Sundry Submitted: 06/27/2023

Time Sundry Submitted: 02:55

Date proposed operation will begin: 08/01/2023

Procedure Description: Hilcorp Energy would like to revise the recomplete NOI that was approved on 1/7/2020. Hilcorp Energy Company requests permission to recomplete the subject well in the Mancos and Mesaverde formations and downhole trimmingle with the existing Dakota. Please see the attached procedure, current and proposed wellbore diagram, plat and natural gas management plan. A closed loop system will be used.

Surface Disturbance

Is any additional surface disturbance proposed?: No

NOI Attachments

Procedure Description

San_Juan_27_4_Unit_58___Amended_NOI_20230627145421.pdf

Notify NMOCD 24 Hours Prior to beginning operations

DHC required

The CBL proposed in the procedures shall be submitted to the Division. If the cement sheath around the casing is not adequate to protect the casing and isolate strata from the top Mesaverde perforation to at least 150 feet above the top Mesaverde perforation, then Hilcorp shall conduct operations to remediate it prior to completing or producing from the formation.

Dean R. McIlure

08/16/2023

Well Name: SAN JUAN 27-4 UNIT

Well Location: T27N / R4W / SEC 31 /
SWSW / 36.524841 / -107.296158County or Parish/State: RIO
ARRIBA / NM

Well Number: 58

Type of Well: CONVENTIONAL GAS
WELL

Allottee or Tribe Name:

Lease Number: NMSF080670

Unit or CA Name: SAN JUAN 27-4
UNIT--DKUnit or CA Number:
NMNM78408B

US Well Number: 3003920386

Well Status: Producing Gas Well

Operator: HILCORP ENERGY
COMPANY**Operator**

I certify that the foregoing is true and correct. Title 18 U.S.C. Section 1001 and Title 43 U.S.C. Section 1212, make it a crime for any person knowingly and willfully to make to any department or agency of the United States any false, fictitious or fraudulent statements or representations as to any matter within its jurisdiction. Electronic submission of Sundry Notices through this system satisfies regulations requiring a

Operator Electronic Signature: CHERYLENE WESTON

Signed on: JUN 27, 2023 02:54 PM

Name: HILCORP ENERGY COMPANY

Title: Operations/Regulatory Tech - Sr

Street Address: 1111 TRAVIS STREET

City: HOUSTON

State: TX

Phone: (713) 289-2615

Email address: cweston@hilcorp.com

Field

Representative Name:

Street Address:

City:

State:

Zip:

Phone:

Email address:

BLM Point of Contact

BLM POC Name: MATTHEW H KADE

BLM POC Title: Petroleum Engineer

BLM POC Phone: 5055647736

BLM POC Email Address: MKADE@BLM.GOV

Disposition: Approved

Disposition Date: 06/27/2023

Signature: Matthew Kade



HILCORP ENERGY COMPANY
SAN JUAN 27-4 UNIT 58
Gallup & MESA VERDE RECOMPLETION SUNDRY

JOB PROCEDURES

1. MIRU service rig and associated equipment; test BOP.
2. TOOH with **2-3/8"** tubing set at **7,514'**.
3. Set a **4-1/2"** plug at +/- **7,404'** to isolate the **Dakota**.
4. RU Wireline. Run CBL. Record Top of Cement.
5. Load the hole and pressure test the casing.
6. N/D BOP, N/U frac stack and pressure test frac stack.
7. Perforate and frac the **Basin Mancos** formation (Top Perforation @ **7,435'**; Bottom Perforation @ **7,796'**).
8. Isolate frac stages with a plug.
9. Perforate and frac the **Mesa Verde** formation (Top Perforation @ **5,700'**; Bottom Perforation @ **6,650'**).
- 8 Isolate frac stages with a plug.
9. Nipple down frac stack, nipple up BOP and test.
10. TIH with a mill and drill out top isolation plug and **Mesa Verde/Basin Mancos** frac plugs.
11. Clean out to **Dakota** isolation plug.
12. Drill out **Dakota** isolation plug and cleanout to PBTD of **7,681'**. TOOH.
13. TIH and land production tubing. Get a commingled **Dakota/Basin Mancos/Mesa Verde** flow rate.



HILCORP ENERGY COMPANY
SAN JUAN 27-4 UNIT 58
Gallup & MESA VERDE RECOMPLETION SUNDRY

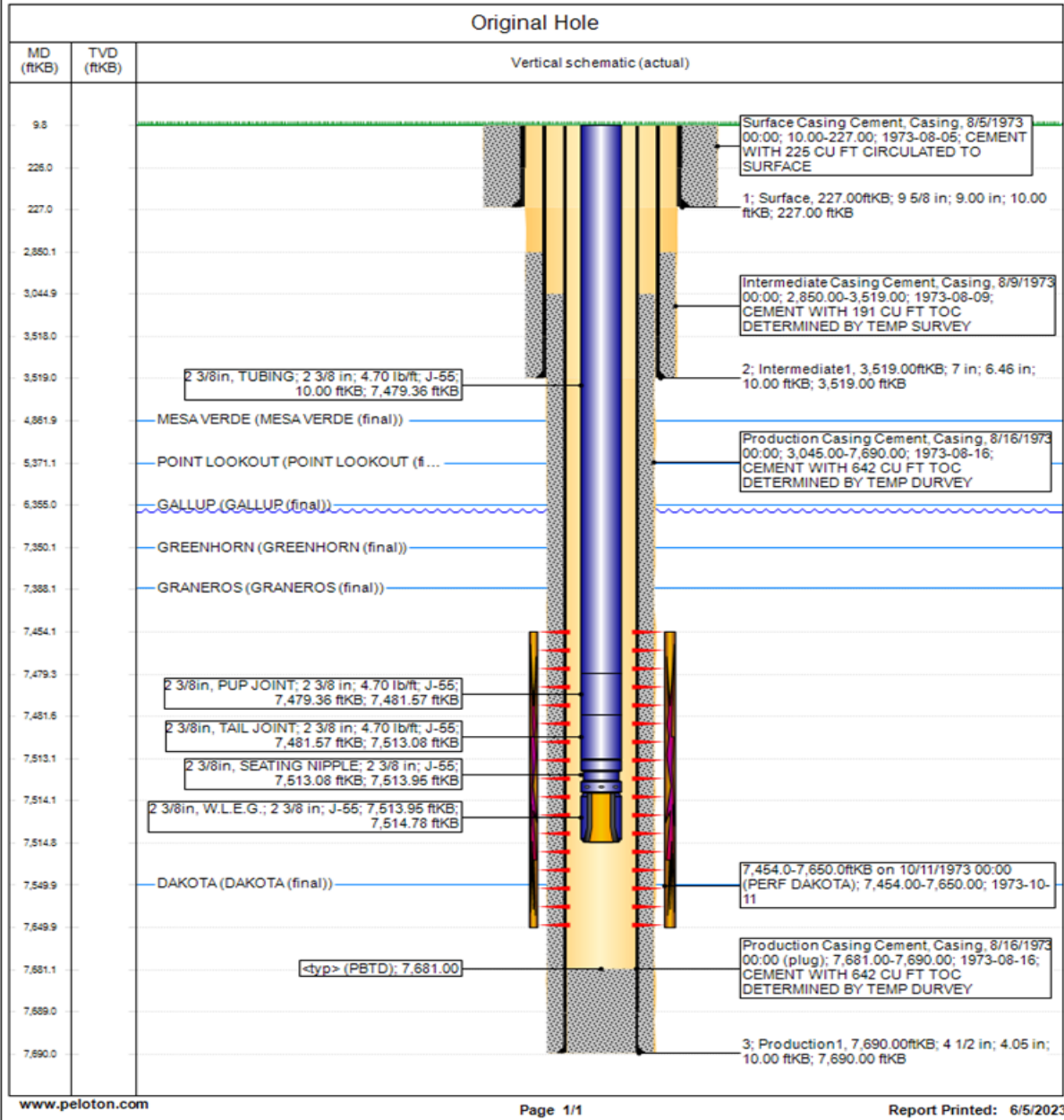
SAN JUAN 27-4 UNIT 58 - CURRENT WELLBORE SCHEMATIC



Current Schematic - Version 3

Well Name: SAN JUAN 27-5 UNIT #170

| | | | | | |
|-----------------------------------|---|---|--------------------------------|--------------------------------|-------------------------|
| API / UWI 3003920662 | Surface Legal Location 034-027N-005W-L | Field Name BASIN DAKOTA (PRORATED GAS) | Route 1402 | State/Province NEW MEXICO | Well Configuration Type |
| Ground Elevation (ft) 6,524.00 | Original KBRT Elevation (ft) 6,534.00 | KB-Ground Distance (ft) 10.00 | KB-Casing Flange Distance (ft) | KB-Tubing Hanger Distance (ft) | |





HILCORP ENERGY COMPANY
SAN JUAN 27-4 UNIT 58
Gallup & MESA VERDE RECOMPLETION SUNDRY

SAN JUAN 27-4 UNIT 58 - Proposed Schematic

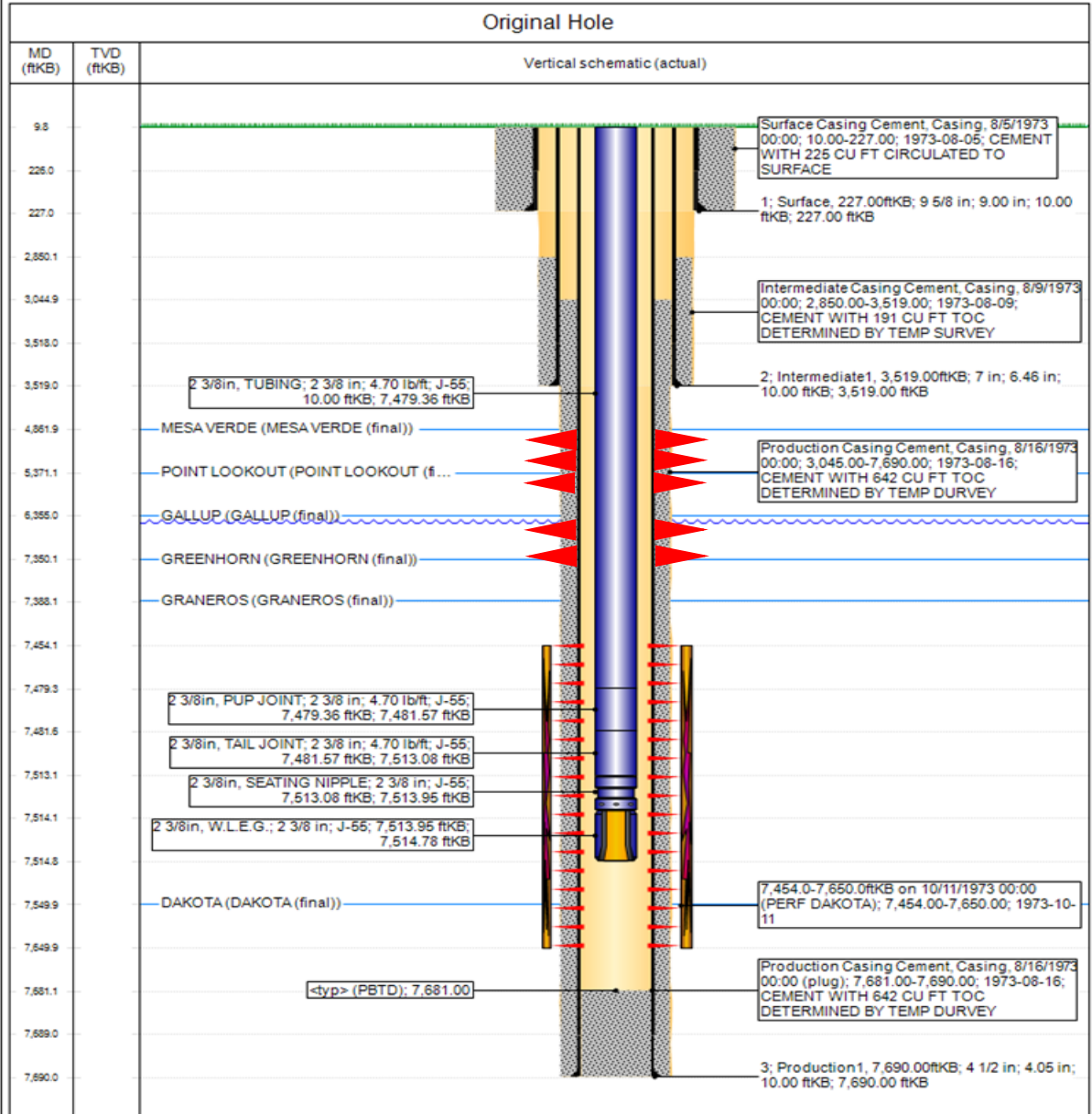


Hilcorp Energy Company

Proposed Schematic

Well Name: SAN JUAN 27-5 UNIT #170

| | | | | | |
|-----------------------------------|---|---|--------------------------------|--------------------------------|-------------------------|
| API / UWI 3003920662 | Surface Legal Location 034-027N-006W-L | Field Name BASIN DAKOTA (PRORATED GAS) | Route 1402 | State/Province NEW MEXICO | Well Configuration Type |
| Ground Elevation (ft) 6,524.00 | Original KBRT Elevation (ft) 6,534.00 | KB-Ground Distance (ft) 10.00 | KB-Casing Flange Distance (ft) | KB-Tubing Hanger Distance (ft) | |



www.peloton.com

Page 1/1

Report Printed: 6/5/2023

District I

1625 N. French Dr., Hobbs, NM 88240
Phone:(575) 393-6161 Fax:(575) 393-0720

District II

811 S. First St., Artesia, NM 88210
Phone:(575) 748-1283 Fax:(575) 748-9720

District III

1000 Rio Brazos Rd., Aztec, NM 87410
Phone:(505) 334-6178 Fax:(505) 334-6170

District IV

1220 S. St Francis Dr., Santa Fe, NM 87505
Phone:(505) 476-3470 Fax:(505) 476-3462

State of New Mexico
Energy, Minerals and Natural
Resources
Oil Conservation Division
1220 S. St Francis Dr.
Santa Fe, NM 87505

Form C-102
August 1, 2011

Permit 274112

WELL LOCATION AND ACREAGE DEDICATION PLAT

| | | |
|-------------------------------|--|------------------------------|
| 1. API Number 30-039-20386 | 2. Pool Code 97232 | 3. Pool Name BASIN-MANCOS |
| 4. Property Code 319210 | 5. Property Name SAN JUAN 27 4 UNIT | 6. Well No. 058 |
| 7. OGRID No. 372171 | 8. Operator Name HILCORP ENERGY COMPANY | 9. Elevation 7306 |

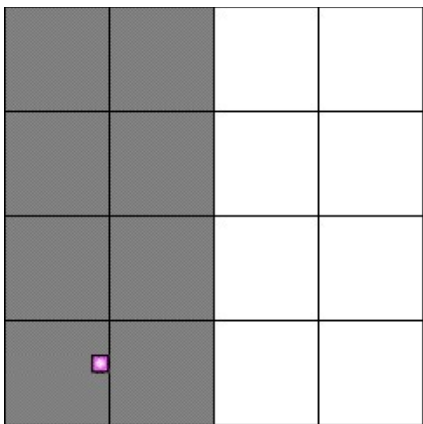
10. Surface Location

| | | | | | | | | | |
|---------------|---------------|-----------------|--------------|---------|------------------|---------------|-------------------|---------------|----------------------|
| UL - Lot M | Section 31 | Township 27N | Range 04W | Lot Idn | Feet From 790 | N/S Line S | Feet From 1190 | E/W Line W | County RIO ARriba |
|---------------|---------------|-----------------|--------------|---------|------------------|---------------|-------------------|---------------|----------------------|

11. Bottom Hole Location If Different From Surface

| | | | | | | | | | |
|-------------------------------|---------|----------|-------|---------------------|------------------------|----------|-----------|---------------|--------|
| UL - Lot | Section | Township | Range | Lot Idn | Feet From | N/S Line | Feet From | E/W Line | County |
| 12. Dedicated Acres 323.16 | | | | 13. Joint or Infill | 14. Consolidation Code | | | 15. Order No. | |

NO ALLOWABLE WILL BE ASSIGNED TO THIS COMPLETION UNTIL ALL INTERESTS HAVE BEEN CONSOLIDATED OR A NON-STANDARD UNIT HAS BEEN APPROVED BY THE DIVISION

| | |
|--|--|
|  | <p style="text-align: center;">OPERATOR CERTIFICATION</p> <p><i>I hereby certify that the information contained herein is true and complete to the best of my knowledge and belief, and that this organization either owns a working interest or unleased mineral interest in the land including the proposed bottom hole location(s) or has a right to drill this well at this location pursuant to a contract with an owner of such a mineral or working interest, or to a voluntary pooling agreement or a compulsory pooling order heretofore entered by the division.</i></p> <p style="text-align: right; color: purple;"><i>Released to Imaging: 8/16/2023 5:08:02 PM</i></p> <p>E-Signed By: <i>Cherylene Weston</i> Title: Operations/Regulatory Technician - Sr. Date: 6/27/2023</p> <hr/> <p style="text-align: center;">SURVEYOR CERTIFICATION</p> <p><i>I hereby certify that the well location shown on this plat was plotted from field notes of actual surveys made by me or under my supervision, and that the same is true and correct to the best of my belief.</i></p> <p>Surveyed By: David Kilven Date of Survey: 9/23/1968 Certificate Number: 1760</p> |
|--|--|

District I

1625 N. French Dr., Hobbs, NM 88240
Phone:(575) 393-6161 Fax:(575) 393-0720

District II

811 S. First St., Artesia, NM 88210
Phone:(575) 748-1283 Fax:(575) 748-9720

District III

1000 Rio Brazos Rd., Aztec, NM 87410
Phone:(505) 334-6178 Fax:(505) 334-6170

District IV

1220 S. St Francis Dr., Santa Fe, NM 87505
Phone:(505) 476-3470 Fax:(505) 476-3462

State of New Mexico
Energy, Minerals and Natural
Resources
Oil Conservation Division
1220 S. St Francis Dr.
Santa Fe, NM 87505

Form C-102

August 1, 2011

Permit 274112

WELL LOCATION AND ACREAGE DEDICATION PLAT

| | | |
|-------------------------------|--|---|
| 1. API Number 30-039-20386 | 2. Pool Code 72319 | 3. Pool Name BLANCO-MESAVERDE (PRORATED GAS) |
| 4. Property Code 319210 | 5. Property Name SAN JUAN 27 4 UNIT | 6. Well No. 058 |
| 7. OGRID No. 372171 | 8. Operator Name HILCORP ENERGY COMPANY | 9. Elevation 7306 |

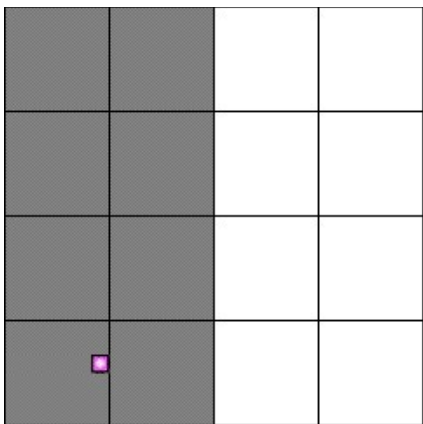
10. Surface Location

| | | | | | | | | | |
|---------------|---------------|-----------------|--------------|---------|------------------|---------------|-------------------|---------------|----------------------|
| UL - Lot M | Section 31 | Township 27N | Range 04W | Lot Idn | Feet From 790 | N/S Line S | Feet From 1190 | E/W Line W | County RIO ARriba |
|---------------|---------------|-----------------|--------------|---------|------------------|---------------|-------------------|---------------|----------------------|

11. Bottom Hole Location If Different From Surface

| | | | | | | | | | |
|-------------------------------|---------|----------|-------|---------------------|------------------------|----------|-----------|---------------|--------|
| UL - Lot | Section | Township | Range | Lot Idn | Feet From | N/S Line | Feet From | E/W Line | County |
| 12. Dedicated Acres 323.16 | | | | 13. Joint or Infill | 14. Consolidation Code | | | 15. Order No. | |

NO ALLOWABLE WILL BE ASSIGNED TO THIS COMPLETION UNTIL ALL INTERESTS HAVE BEEN CONSOLIDATED OR A NON-STANDARD UNIT HAS BEEN APPROVED BY THE DIVISION

| | |
|--|--|
|  | <p style="text-align: center;">OPERATOR CERTIFICATION</p> <p><i>I hereby certify that the information contained herein is true and complete to the best of my knowledge and belief, and that this organization either owns a working interest or unleased mineral interest in the land including the proposed bottom hole location(s) or has a right to drill this well at this location pursuant to a contract with an owner of such a mineral or working interest, or to a voluntary pooling agreement or a compulsory pooling order heretofore entered by the division.</i></p> <p style="text-align: right; color: purple;"><i>Released to Imaging: 8/16/2023 5:08:02 PM</i></p> <p>E-Signed By: Tammy Jones Title: Operations/Regulatory Technician - Sr. Date: 11/7/2019</p> <hr/> <p style="text-align: center;">SURVEYOR CERTIFICATION</p> <p><i>I hereby certify that the well location shown on this plat was plotted from field notes of actual surveys made by me or under my supervision, and that the same is true and correct to the best of my belief.</i></p> <p>Surveyed By: David Kilven Date of Survey: 9/23/1968 Certificate Number: 1760</p> |
|--|--|

State of New Mexico
Energy, Minerals and Natural Resources Department

Submit Electronically
Via E-permitting

Oil Conservation Division
1220 South St. Francis Dr.
Santa Fe, NM 87505

NATURAL GAS MANAGEMENT PLAN

This Natural Gas Management Plan must be submitted with each Application for Permit to Drill (APD) for a new or recompleted well.

Section 1 – Plan Description

Effective May 25, 2021

I. Operator: Hilcorp Energy Company **OGRID:** 372171 **Date:** 6/27/2023

II. Type: ☒ Original ☐ Amendment due to ☐ 19.15.27.9.D(6)(a) NMAC ☐ 19.15.27.9.D(6)(b) NMAC ☐ Other.

If Other, please describe: _____

III. Well(s): Provide the following information for each new or recompleted well or set of wells proposed to be drilled or proposed to be recompleted from a single well pad or connected to a central delivery point.

| Well Name | API | ULSTR | Footages | Anticipated Oil | Anticipated Gas MCF/D | Anticipated Produced Water BBL/D |
|-----------------------|------------|-------------|----------------------|-----------------|-----------------------|----------------------------------|
| San Juan 27-4 Unit 58 | 3003920386 | M-31-27N-4W | 790' FSL & 1190' FWL | 2 | 375 | .5 |
| | | | | | | |

IV. Central Delivery Point Name: Ignacio Processing Plant [See 19.15.27.9(D)(1) NMAC]

V. Anticipated Schedule: Provide the following information for each new or recompleted well or set of wells proposed to be drilled or proposed to be recompleted from a single well pad or connected to a central delivery point.

| Well Name | API | Spud Date | TD Reached Date | Completion Commencement Date | Initial Flow Back Date | First Production Date |
|------------------------------|-------------------|------------|-----------------|------------------------------|------------------------|--------------------------|
| <u>San Juan 27-4 Unit 58</u> | <u>3003920386</u> | <u>N/A</u> | <u>N/A</u> | <u>N/A</u> | <u>N/A</u> | <u>Not Yet Scheduled</u> |
| | | | | | | |

VI. Separation Equipment: ☒ Attach a complete description of how Operator will size separation equipment to optimize gas capture.

VII. Operational Practices: ☒ Attach a complete description of the actions Operator will take to comply with the requirements of Subsection A through F of 19.15.27.8 NMAC.

VIII. Best Management Practices: ☒ Attach a complete description of Operator's best management practices to minimize venting during active and planned maintenance.

Section 2 – Enhanced Plan
EFFECTIVE APRIL 1, 2022

Beginning April 1, 2022, an operator that is not in compliance with its statewide natural gas capture requirement for the applicable reporting area must complete this section.

☒ Operator certifies that it is not required to complete this section because Operator is in compliance with its statewide natural gas capture requirement for the applicable reporting area.

IX. Anticipated Natural Gas Production:

| Well | API | Anticipated Average Natural Gas Rate MCF/D | Anticipated Volume of Natural Gas for the First Year MCF |
|------|-----|--|--|
| | | | |
| | | | |

X. Natural Gas Gathering System (NGGS):

| Operator | System | ULSTR of Tie-in | Anticipated Gathering Start Date | Available Maximum Daily Capacity of System Segment Tie-in |
|----------|--------|-----------------|----------------------------------|---|
| | | | | |
| | | | | |

XI. Map. ☐ Attach an accurate and legible map depicting the location of the well(s), the anticipated pipeline route(s) connecting the production operations to the existing or planned interconnect of the natural gas gathering system(s), and the maximum daily capacity of the segment or portion of the natural gas gathering system(s) to which the well(s) will be connected.

XII. Line Capacity. The natural gas gathering system ☐ will ☐ will not have capacity to gather 100% of the anticipated natural gas production volume from the well prior to the date of first production.

XIII. Line Pressure. Operator ☐ does ☐ does not anticipate that its existing well(s) connected to the same segment, or portion, of the natural gas gathering system(s) described above will continue to meet anticipated increases in line pressure caused by the new well(s).

☐ Attach Operator's plan to manage production in response to the increased line pressure.

XIV. Confidentiality: ☐ Operator asserts confidentiality pursuant to Section 71-2-8 NMSA 1978 for the information provided in Section 2 as provided in Paragraph (2) of Subsection D of 19.15.27.9 NMAC, and attaches a full description of the specific information for which confidentiality is asserted and the basis for such assertion.

Section 3 - Certifications

Effective May 25, 2021

Operator certifies that, after reasonable inquiry and based on the available information at the time of submittal:

☒ Operator will be able to connect the well(s) to a natural gas gathering system in the general area with sufficient capacity to transport one hundred percent of the anticipated volume of natural gas produced from the well(s) commencing on the date of first production, taking into account the current and anticipated volumes of produced natural gas from other wells connected to the pipeline gathering system; or

☐ Operator will not be able to connect to a natural gas gathering system in the general area with sufficient capacity to transport one hundred percent of the anticipated volume of natural gas produced from the well(s) commencing on the date of first production, taking into account the current and anticipated volumes of produced natural gas from other wells connected to the pipeline gathering system.

If Operator checks this box, Operator will select one of the following:

Well Shut-In. ☐ Operator will shut-in and not produce the well until it submits the certification required by Paragraph (4) of Subsection D of 19.15.27.9 NMAC; or

Venting and Flaring Plan. ☐ Operator has attached a venting and flaring plan that evaluates and selects one or more of the potential alternative beneficial uses for the natural gas until a natural gas gathering system is available, including:

- (a) power generation on lease;
- (b) power generation for grid;
- (c) compression on lease;
- (d) liquids removal on lease;
- (e) reinjection for underground storage;
- (f) reinjection for temporary storage;
- (g) reinjection for enhanced oil recovery;
- (h) fuel cell production; and
- (i) other alternative beneficial uses approved by the division.

Section 4 - Notices

1. If, at any time after Operator submits this Natural Gas Management Plan and before the well is spud:

(a) Operator becomes aware that the natural gas gathering system it planned to connect the well(s) to has become unavailable or will not have capacity to transport one hundred percent of the production from the well(s), no later than 20 days after becoming aware of such information, Operator shall submit for OCD's approval a new or revised venting and flaring plan containing the information specified in Paragraph (5) of Subsection D of 19.15.27.9 NMAC; or

(b) Operator becomes aware that it has, cumulatively for the year, become out of compliance with its baseline natural gas capture rate or natural gas capture requirement, no later than 20 days after becoming aware of such information, Operator shall submit for OCD's approval a new or revised Natural Gas Management Plan for each well it plans to spud during the next 90 days containing the information specified in Paragraph (2) of Subsection D of 19.15.27.9 NMAC, and shall file an update for each Natural Gas Management Plan until Operator is back in compliance with its baseline natural gas capture rate or natural gas capture requirement.

2. OCD may deny or conditionally approve an APD if Operator does not make a certification, fails to submit an adequate venting and flaring plan which includes alternative beneficial uses for the anticipated volume of natural gas produced, or if OCD determines that Operator will not have adequate natural gas takeaway capacity at the time a well will be spud.

I certify that, after reasonable inquiry, the statements in and attached to this Natural Gas Management Plan are true and correct to the best of my knowledge and acknowledge that a false statement may be subject to civil and criminal penalties under the Oil and Gas Act.

| |
|--|
| Signature: <i>Cherylene Weston</i> |
| Printed Name: Cheryl Weston |
| Title: Operations/Regulatory Tech Sr. |
| E-mail Address: cweston@hilcorp.com |
| Date: 6/27/2023 |
| Phone: 713-289-2615 |
| OIL CONSERVATION DIVISION (Only applicable when submitted as a standalone form) |
| Approved By: |
| Title: |
| Approval Date: |
| Conditions of Approval: |

VI. Separation Equipment:

Hilcorp Energy Company (HEC or Operator) production facilities include separation equipment designed to efficiently separate gas from liquid phases to optimize gas capture based on projected and estimated volumes from the targeted pool of our recompleting project. HEC will utilize flowback separation equipment and production separation equipment designed and built to industry specifications after the recompleting to optimize gas capture and send gas to sales or flare based on analytical composition. HEC operates facilities that are typically one-well facilities. Production separation equipment is upgraded prior to well being completed, if determined to be undersized or inadequate. This equipment is already on-site and tied into our sales gas lines prior to the recompleting operations.

VII. Operational Practices:

1. Subsection (A) Venting and Flaring of Natural Gas
 - HEC understands the requirements of NMAC 19.15.27.8 which outlines that the venting and flaring of natural gas during drilling, completion or production operations that constitutes waste as defined in 19.15.2 are prohibited.
2. Subsection (B) Venting and Flaring during drilling operations
 - This gas capture plan isn't for a well being drilled.
3. Subsection (C) Venting and flaring during completion or recompleting
 - Flowlines will be routed for flowback fluids into a completion or storage tank and if feasible under well conditions, flare rather than vent and commence operation of a separator as soon as it is technically feasible for a separator to function.
 - At any point in the well life (completion, production, inactive) an audio, visual and olfactory inspection be performed at prescribed intervals (weekly or monthly) pursuant to Subsection D of 19.15.27.8 NMAC, to confirm that all production equipment is operating properly and there are no leaks or releases.
4. Subsection (D) Venting and flaring during production operations
 - At any point in the well life (completion, production, inactive) an audio, visual and olfactory inspection be performed at prescribed intervals (weekly or monthly) pursuant to Subsection D of 19.15.27.8 NMAC, to confirm that all production equipment is operating properly and there are no leaks or releases.
 - Monitor manual liquid unloading for wells on-site or in close proximity (<30 minutes' drive time), take reasonable actions to achieve a stabilized rate and pressure at the earliest practical time, and take reasonable actions to minimize venting to the maximum extent practicable.
 - HEC will not vent or flare except during the approved activities listed in NMAC 19.15.27.8 (D) 1-4.
5. Subsection (E) Performance standards
 - All tanks and separation equipment are designed for maximum throughput and pressure to minimize waste.
 - If a flare is utilized during production operations it will have a continuous pilot and is located more than 100 feet from any known well or storage tanks.
 - At any point in the well life (completion, production, inactive) an audio, visual and olfactory inspection be performed at prescribed intervals (weekly or monthly) pursuant to Subsection D of 19.15.27.8 NMAC, to confirm that all production equipment is operating properly and there are no leaks or releases.
6. Subsection (F) Measurement or estimation of vented and flared natural gas
 - Measurement equipment is installed to measure the volume of natural gas flared from process piping.
 - When measurement isn't practicable, estimation of vented and flared natural gas will be completed as noted in 19.15.27.8 (F) 5-6.

VIII. Best Management Practices:

1. Operator has adequate storage and takeaway capacity for wells it chooses to recomplete as the flowlines at the sites are already in place and tied into a gathering system.
2. Operator will flare rather than vent vessel blowdown gas when technically feasible during active and/or planned maintenance to equipment on-site.
3. Operator combusts natural gas that would otherwise be vented or flared, when technically feasible.
4. Operator will shut in wells in the event of a takeaway disruption, emergency situation, or other operations where venting or flaring may occur due to equipment failures.

District I
1625 N. French Dr., Hobbs, NM 88240
Phone:(575) 393-6161 Fax:(575) 393-0720
District II
811 S. First St., Artesia, NM 88210
Phone:(575) 748-1283 Fax:(575) 748-9720
District III
1000 Rio Brazos Rd., Aztec, NM 87410
Phone:(505) 334-6178 Fax:(505) 334-6170
District IV
1220 S. St Francis Dr., Santa Fe, NM 87505
Phone:(505) 476-3470 Fax:(505) 476-3462

State of New Mexico
Energy, Minerals and Natural Resources
Oil Conservation Division
1220 S. St Francis Dr.
Santa Fe, NM 87505

CONDITIONS

Action 233531

CONDITIONS

| | |
|--|---|
| Operator: HILCORP ENERGY COMPANY 1111 Travis Street Houston, TX 77002 | OGRID: 372171 |
| | Action Number: 233531 |
| | Action Type: [C-103] NOI Recompletion (C-103E) |

CONDITIONS

| Created By | Condition | Condition Date |
|------------|--|----------------|
| dmcclure | Notify NMOCD 24 Hours Prior to beginning operations | 8/16/2023 |
| dmcclure | DHC required | 8/16/2023 |
| dmcclure | The CBL proposed in the procedures shall be submitted to the Division. If the cement sheath around the casing is not adequate to protect the casing and isolate strata from the top Mesaverde perforation to at least 150 feet above the top Mesaverde perforation, then Hilcorp shall conduct operations to remediate it prior to completing or producing from the formation. | 8/16/2023 |