

<b>Well Name:</b> CHACON AMIGOS	<b>Well Location:</b> T22N / R3W / SEC 1 / SWSE /	<b>County or Parish/State:</b> SANDOVAL / NM
<b>Well Number:</b> 5	<b>Type of Well:</b> OIL WELL	<b>Allottee or Tribe Name:</b> JICARILLA APACHE
<b>Lease Number:</b> JIC360	<b>Unit or CA Name:</b>	<b>Unit or CA Number:</b>
<b>US Well Number:</b> 3004320536	<b>Well Status:</b> Producing Oil Well	<b>Operator:</b> DJR OPERATING LLC

### Notice of Intent

**Sundry ID:** 2744159

**Type of Submission:** Notice of Intent

**Type of Action:** Plug and Abandonment

**Date Sundry Submitted:** 08/02/2023

**Time Sundry Submitted:** 12:10

**Date proposed operation will begin:** 08/02/2023

**Procedure Description:** This NOI to P&A is being submitted for engineering & geological review prior to onsite inspection as approved by Dave M. of the BLM. A Reclamation Plan will be submitted on a subsequent sundry at a later date. DJR Operating, LLC requests permission to Plug & Abandon the subject well according to the attached Procedure, Current & Proposed Wellbore Diagram.

### Surface Disturbance

**Is any additional surface disturbance proposed?:** No

### NOI Attachments

#### Procedure Description

NOI\_PA\_BLM\_20230802120952.pdf

Well Name: CHACON AMIGOS	Well Location: T22N / R3W / SEC 1 / SWSE /	County or Parish/State: SANDOVAL / NM
Well Number: 5	Type of Well: OIL WELL	Allottee or Tribe Name: JICARILLA APACHE
Lease Number: JIC360	Unit or CA Name:	Unit or CA Number:
US Well Number: 3004320536	Well Status: Producing Oil Well	Operator: DJR OPERATING LLC

Conditions of Approval

Additional

PxA\_22N03W01OKd\_Chacon\_Amigos\_005\_20230809110538.pdf

Authorized

2744159\_NOIA\_5\_3004320536\_KR\_08092023\_20230809114907.pdf

General\_Requirement\_PxA\_20230809114540.pdf

Operator

I certify that the foregoing is true and correct. Title 18 U.S.C. Section 1001 and Title 43 U.S.C. Section 1212, make it a crime for any person knowingly and willfully to make to any department or agency of the United States any false, fictitious or fraudulent statements or representations as to any matter within its jurisdiction. Electronic submission of Sundry Notices through this system satisfies regulations requiring a

Operator Electronic Signature: SHAW-MARIE FORD	Signed on: AUG 02, 2023 12:09 PM
Name: DJR OPERATING LLC	
Title: Regulatory Specialist	
Street Address: 1 Road 3263	
City: Aztec	State: NM
Phone: (505) 632-3476	
Email address: sford@djrlc.com	

Field

Representative Name:		
Street Address:		
City:	State:	Zip:
Phone:		
Email address:		

BLM Point of Contact

BLM POC Name: KENNETH G RENNICK	BLM POC Title: Petroleum Engineer
BLM POC Phone: 5055647742	BLM POC Email Address: krennick@blm.gov
Disposition: Approved	Disposition Date: 08/09/2023
Signature: Kenneth Rennick	

**Plug and Abandonment Procedure  
DJR Operating, LLC  
Chacon Amigos 5  
API # 30-043-20536  
SW/SE, Unit O, Sec. 1, T22N, R3W  
Sandoval County, NM**

1. Hold Pre job meeting, comply with all NMOCD, BLM and environmental regulations.
2. MIRU P & A rig and equipment.
3. Check and record tubing, casing and bradenhead pressures.
4. Remove existing piping from casing valve, RU blow lines from casing valves and blow down casing pressure. Kill well as necessary. Ensure that well is dead or on a vacuum.
5. MIRU hot oil unit, pump hot water to clear tubing of paraffin.
6. TOO H with rods and pump. Lay down to be sent in for storage/salvage.
7. ND WH, unset TAC, NU BOP, function test BOP.
8. Trip out of hole with 2 3/8" tubing. LD tubing to be sent in for storage/salvage.
9. PU workstring. TIH with bit and scraper to 7028' or top of fill. TOO H.
10. TIH with tagging sub to 7028'.
11. Drop standing valve and pressure test tubing to 1000 psi. Recover standing valve.
12. Plug 1: Dakota formation top and perfs: Mix and pump a blind plug of 232' from 7028'.
13. Pull up hole, WOC. TIH, tag Plug 1. If Plug 1 is at 6846' or above, continue to step 14. .
14. Load and roll hole. PT casing if casing does not test contact engineering.
15. MIRU logging truck. Run CBL log from TOC to surface. Hold 600 psi on casing if possible. Electronic copy of CBL to be sent to; Monica Kuehling, NMOCD [mkuehling@state.nm.us](mailto:mkuehling@state.nm.us), Ken Rennick, [krenneck@blm.gov](mailto:krenneck@blm.gov), Scott Lindsay, DJR [slindsay@djrlc.com](mailto:slindsay@djrlc.com), and [Loren Diede, DJR ldiede@djrlc.com](mailto:Loren Diede, DJR ldiede@djrlc.com).
16. TIH to 5870'.
17. Plug 2: Gallup formation top: Spot a balanced plug of 150' from 5870'.
18. Pull up to 5030'.

19. Plug 3: Mancos formation top: Spot balanced plug of 150' from 5030'.
20. TOOH.
21. Plug 4: Mesa Verde formation top: Perforate at 4285'. TIH with retainer, set retainer near 4235'. Mix and pump inside plug of 150' and outside plug of 200' from 4285'.
22. TOOH.
23. Plug 5: Chacra formation top: Perforate at 3529'. TIH, set retainer near 3479'. Mix and pump inside plug of 150' and outside plug of 200' from 3529'.
24. TOOH.
25. Plug 6: Pictured Cliffs, Fruitland, Kirtland and Ojo Alamo formation tops: Spot a balanced plug of 508' from 2788'.
26. Pull up to 1180'.
27. Plug 7: Nacimiento formation top: Perforate at 1180'. TIH, set retainer near 1130'. Mix and pump inside plug of 150' and outside plug of 200' from 1180'.
28. TOOH.
29. Plug 8: Surface casing shoe to surface: Perforate holes at 318', establish circulation out BH. Mix and pump cement to fill casing and 9.625' x 7" casing annulus down casing and out BH.
30. RD cementing equipment. Cut off wellhead, fill any exposed annulus with cement, as necessary. **Install surface P&A marker as per BIA requirements.** Record GPS coordinates for P&A marker and the Final P&A Report. Photograph the P&A marker and attach to the report.
31. Top off casings and cellar with cement as required.
32. RD and MO all rig and cement equipment. Assure that location is free of trash before moving off.
33. Send all reports and attachments to DJR Aztec office for regulatory filings.

**Note: All cement is to be Class G mixed at 15.8 ppg, yield 1.15 cu ft / sx. Cement volumes are based on inside capacities + 50' excess and outside capacities + 100% excess.**

**Surface PxA marker is to be installed at surface, 12"x18", and exposed at the reclaimed GL surface.**

**DJR Operating, LLC****Chacon Amigos 5**

API: 30-043-20536

SW/SE, Unit O, Sec 1, T22N, R3W

Sandoval County, NM

GL 7256'  
 KB 7270'  
 Spud Date 4/10/1981

**SURF CSG**

Hole size 12.25"  
 Csg Size: 8.625"  
 Wt: 24#  
 Grade: J-55  
 ID: 8.097"  
 Depth 268'  
 Csg cap ft<sup>3</sup>: 0.3576  
 TOC: Surface

**FORMATION TOPS**

San Jose	Surface
Nacimiento	1130'
Ojo Alamo	2380'
Kirtland	2487'
Fruitland	2680'
Pictured Cliffs	2738'
Chacra	3479'
Mesa Verde	4235'
Mancos	4980'
Gallup	5820'
Dakota	6896'

**PROD CSG**

Hole size 7.875"  
 Csg Size: 4.5"  
 Wt: 10.5/11.6#  
 Grade: K-55  
 ID: 4.892"  
 Depth 7181'  
 Csg cap ft<sup>3</sup>: 0.1305  
 Csq/Csq Ann ft<sup>3</sup>: 0.1926  
 Csg/OH cap ft<sup>3</sup>: 0.1733  
 TOC: Stg 1 5477' (Calc)  
 TOC: Stg 2 2096' (Calc)

DV Tool at 2896'

TOC calc 5477'

Perfs 6912-6948'

Perfs 7018-7028'

2-13-2018: PBDT: 7116'  
 TD 7181'

**Prod Tubing 2-15-2018**

NC, MA, PS, SN (6930'), 6 jts 2-3/8" tbg, TAC (6741), 213 jts, 8' pup, 1 jt. (EOT 6967')

**Rod String**

2X1-1/4X10X14 RHAC-Z, 4x1-1/4" K bars,  
 19x3/4" rods with molded guides, 153x3/4"  
 plain rods, 96x7/8" guided rods, 4x plain rods,  
 4' pony, 18' polished rod with 1 1/2" 10' liner.

**DJR Operating, LLC****Chacon Amigos 5**

API: 30-043-20536

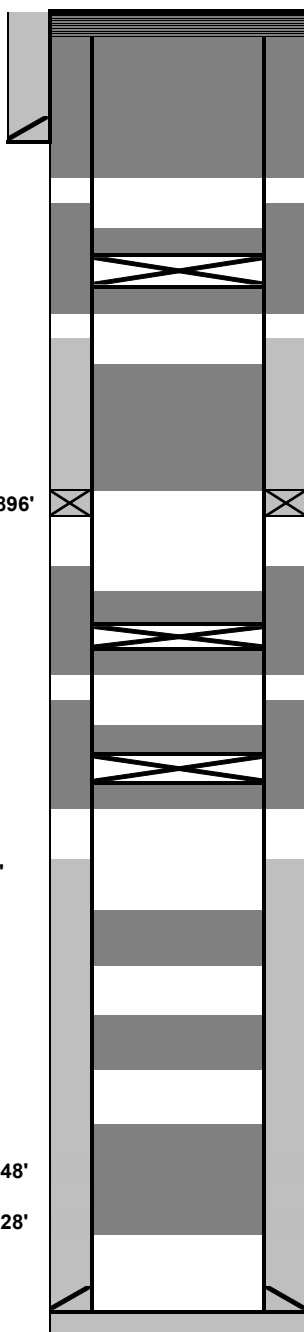
SW/SE, Unit O, Sec 1, T22N, R3W  
Sandoval County, NMGL 7256'  
KB 7270'  
Spud Date 4/10/1981**SURF CSG**Hole size 12.25"  
Csg Size: 8.625"  
Wt: 24#  
Grade: J-55  
ID: 8.097"  
Depth 268'  
Csg cap ft<sup>3</sup>: 0.3576  
TOC: Surface**FORMATION TOPS**San Jose Surface  
Nacimiento 1130'  
Ojo Alamo 2380'  
Kirtland 2487'  
Fruitland 2680'  
Pictured Cliffs 2738'  
Chacra 3479'  
Mesa Verde 4235'  
Mancos 4980'  
Gallup 5820'  
Dakota 6896'**PROD CSG**Hole size 7.875"  
Csg Size: 4.5"  
Wt: 10.5/11.6#  
Grade: K-55  
ID: 4.892"  
Depth 7181'  
Csq cap ft<sup>3</sup>: 0.1305  
Csq/Csq Ann ft<sup>3</sup>: 0.1926  
Csg/OH cap ft<sup>3</sup>: 0.1733  
TOC: Stg 1 5477' (Calc)  
TOC: Stg 2 2096' (Calc)

DV Tool at 2896'

TOC calc 5477'

Perfs 6912-6948'

Perfs 7018-7028'

PBTD 7116'  
TD 7181'Top off: Cut off WH, check TOC.  
Install P&A marker, top off casings and cellar as needed.Plug 8: Surface casing shoe:  
Perforate at 318', establish circulation down casing and out BH. Mix and pump cement down casing and out BH.Plug 7: Nacimiento formation top:  
Perforate at 1180'. Set retainer near 1130'. Mix and pump inside plug of 150' and outside plug of 200' from 1180'.Plug 6: Pictured Cliffs, Fruitland, Kirtland and Ojo Alamo formation tops:  
Mix and spot balanced plug of 508' from 2788'.Plug 5: Chacra formation top:  
Perforate at 3529'. Set retainer near 3479'. Mix and pump inside plug of 150' and outside plug of 200' from 3529'.Plug 4: Mesa Verde formation top:  
Perforate at 4285'. Set retainer near 4235'. Mix and pump inside plug of 150' and outside plug of 200' from 4285'.

Plug 3: Mancos formation top: Mix and spot a balanced plug of 150' from 5030'.

Plug 2: Gallup formation top: Mix and spot a balanced plug of 150' from 5870'.

Run CBL from TOC to surface

Load and roll hole, PT casing

Plug 1: Dakota perfs and formation top: Mix and pump a blind plug of 232' from 7028'.

## BLM FFO Fluid Minerals P&A Geologic Report

AFMSS ID: 2744159

Date Completed: 8/9/2023

Well No.	Chacon Amigos #005	SHL	790	FSL	1850	FEL
API No.	3004320536		Unit O	Sec. 01	T22N	R03W
Lease No.	JIC360	BHL	Same			
Operator	DJR Operating, LLC					
Elev. (KB)	7270	County	Sandoval	State	NM	
Total Depth	7181	PBTD	7116	Formation	Dakota	

Formation Top	MD (ft KB)	Remarks
San Jose Fm.	Surface	Surface/freshwater sands
Nacimiento Fm.	1130	Freshwater
Ojo Alamo Ss	2380	Freshwater
Kirtland Fm.	2487	Water/possible gas
Fruitland Fm.	2620	Coal/gas/water
Pictured Cliffs Ss	2738	Possible gas/water
Lewis Shale	2862	
Chacara	3479	Possible gas
Cliff House Ss	4235	Possible gas
Menefee Fm.	4315	Coal/possible gas/water
Point Lookout Fm.	4780	Possible gas/water
Mancos Shale	4980	Probable Oil & gas
Gallup	5820	Probable Oil & gas
Greenhorn Ls	6812	
Graneros Shale	6896	Oil & gas
Dakota Ss	6913	Oil & gas
Morrison Fm.		

Remarks:

Reference Well:

- Dakota/Graneros perfs 6912' - 7028'.

1) Formation Tops  
Same

Prepared by: Chris Wenman

**UNITED STATES DEPARTMENT OF THE INTERIOR  
BUREAU OF LAND MANAGEMENT  
FARMINGTON DISTRICT OFFICE  
6251 COLLEGE BLVD.  
FARMINGTON, NEW MEXICO 87402**

AFMSS 2 Sundry ID 2744159

Attachment to notice of Intention to Abandon

Well: Chacon Amigos 5

**CONDITIONS OF APPROVAL**

1. Plugging operations authorized are subject to the attached "General Requirements for Permanent Abandonment of Wells on Federal and Indian Lease."
2. Farmington Office is to be notified at least 24 hours before the plugging operations commence at (505) 564-7750.

You are also required to place cement excesses per 4.2 and 4.4 of the attached General Requirements.

Office Hours: 7:45 a.m. to 4:30 p.m.

K. Rennick 08/09/2023



**GENERAL REQUIREMENTS FOR  
PERMANENT ABANDONMENT OF WELLS ON FEDERAL AND INDIAN LEASES  
FARMINGTON FIELD OFFICE**

1.0 The approved plugging plans may contain variances from the following minimum general requirements.

1.1 Modification of the approved plugging procedure is allowed only with the prior approval of the Authorized Officer, Farmington Field Office.

1.2 Requirements may be added to address specific well conditions.

2.0 Materials used must be accurately measured. (densometer/scales)

3.0 A tank or lined pit must be used for containment of any fluids from the wellbore during plugging operations and all pits are to be fenced with woven wire. These pits will be fenced on three sides and once the rig leaves location, the fourth side will be fenced.

3.1 Pits are not to be used for disposal of any hydrocarbons. If hydrocarbons are present in the pit, the fluids must be removed prior to filling in.

4.0 All cement plugs are to be placed through a work string. Cement may be bull-headed down the casing with prior approval. Cement caps on top of bridge plugs or cement retainers may be placed by dump bailer.

4.1 The cement shall be as specified in the approved plugging plan.

4.2 All cement plugs placed inside casing shall have sufficient volume to fill a minimum of 100' of the casing, or annular void(s) between casings, plus an excess volume sufficient to provide for 50 linear feet of fill above the plug.

4.3 Surface plugs may be no less than 50' in length.

4.4 All cement plugs placed to fill annular void(s) between casing and the formation shall be of sufficient volume to fill a minimum of 100' of the annular space plus 100% excess, calculated using the bit size, or 100' of annular capacity, determined from a caliper log, plus an excess volume sufficient to provide for 50 linear feet of fill above the plug.

4.5 All cement plugs placed to fill an open hole shall be of sufficient volume to fill a minimum of 100' of hole, as calculated from a caliper log, plus an excess volume sufficient to provide for 50 linear feet of fill above the plug. In the absence of a caliper log, an excess of 100% shall be required.

**4.6 A cement bond log or other accepted cement evaluation tool is required to be run if one had not been previously ran or cement did not circulate to surface during the original casing cementing job or subsequent cementing jobs.**

5.0 All cement plugs spotted across, or above, any exposed zone(s), when; the wellbore is not full of fluid or the fluid level will not remain static, and in the case of lost circulation or partial returns during cement placement, shall be tested by tagging with the work string.

- 5.1 The top of any cement plug verified by tagging must be at or above the depth specified in the approved plan, without regard to any excess.
- 5.2 Testing will not be required for any cement plug that is mechanically contained by use of a bridge plug and/or cement retainer, if casing integrity has been established.
- 5.3 Any cement plug which is the only isolating medium, for a fresh water interval or a zone containing a prospectively valuable deposit of minerals, shall be tested by tagging.
- 5.4 If perforations are required below the surface casing shoe, a 30 minute minimum wait time will be required to determine if gas and/or water flows are present. If flow is present, the well will be shut-in for a minimum of one hour and the pressure recorded. Short or long term venting may be necessary to evacuate trapped gas. **If only a water flow occurs with no associated gas, shut well in and record the pressures. Contact the Engineer as it may be necessary to change the cement weight and additives.**

6.0 Before setting any cement plugs the hole needs to be rolled. All wells are to be controlled by means of a fluid that is to be of a weight and consistency necessary to stabilize the wellbore. This fluid shall be left in place as filler between all plugs.

- 6.1 Drilling mud may be used as the wellbore fluid in open hole plugging operations.
- 6.2 The wellbore fluid used in cased holes shall be of sufficient weight to balance known pore pressures in all exposed formations.

7.0 A blowout preventer and related equipment (BOPE) shall be installed and tested prior to working in a wellbore with any exposed zone(s); (1) that are over pressured, (2) where the pressures are unknown, or (3) known to contain H<sub>2</sub>S.

8.0 Within 30 days after plugging work is completed, file a Sundry Notice, Subsequent Report of Abandonment (Form 3160-5), through the Automated Fluid Minerals Support System (AFMSS) with the Field Manager, Bureau of Land Management, 6251 College Blvd., Suite A, Farmington, NM 87402. The report should show the manner in which the plugging work was carried out, the extent, by depth(s), of cement plugs placed, and the size and location, by depth(s), of casing left in the well. Show date well was plugged.

9.0 All permanently abandoned wells are to be marked with a permanent monument as specified in 43 CFR 3162.6(d). Unless otherwise approved.

10.0 If this well is located in a Specially Designated Area (SDA), compliance with the appropriate seasonal closure requirements will be necessary.

All of the above are minimum requirements. Failure to comply with the above conditions of approval may result in an assessment for noncompliance and/or a Shut-in Order being issued pursuant to 43 CFR 3163.1. You are further advised that any instructions, orders or decisions issued by the Bureau of Land Management are subject to administrative review pursuant to 43 CFR 3165.3 and appeal pursuant to 43 CFR 3165.4 and 43 CFR 4.700.

**District I**  
1625 N. French Dr., Hobbs, NM 88240  
Phone:(575) 393-6161 Fax:(575) 393-0720  
**District II**  
811 S. First St., Artesia, NM 88210  
Phone:(575) 748-1283 Fax:(575) 748-9720  
**District III**  
1000 Rio Brazos Rd., Aztec, NM 87410  
Phone:(505) 334-6178 Fax:(505) 334-6170  
**District IV**  
1220 S. St Francis Dr., Santa Fe, NM 87505  
Phone:(505) 476-3470 Fax:(505) 476-3462

State of New Mexico  
Energy, Minerals and Natural Resources  
Oil Conservation Division  
1220 S. St Francis Dr.  
Santa Fe, NM 87505

CONDITIONS  
  
Action 258177

CONDITIONS

Operator:  DJR OPERATING, LLC 1 Road 3263 Aztec, NM 87410	OGRID:  371838
	Action Number:  258177
	Action Type:  [C-103] NOI Plug & Abandon (C-103F)

CONDITIONS

Created By	Condition	Condition Date
mkuehling	for record only	8/28/2023