

Well Name: MISSION FED COM	Well Location: T25S / R35E / SEC 1 / LOT 2 / 32.16603 / -103.317267	County or Parish/State: LEA / NM
Well Number: 705H	Type of Well: OIL WELL	Allottee or Tribe Name:
Lease Number: NMNM138897	Unit or CA Name:	Unit or CA Number:
US Well Number: 3002548623	Well Status: Producing Oil Well	Operator: FRANKLIN MOUNTAIN ENERGY LLC

Subsequent Report

Sundry ID: 2509346

Type of Submission: Subsequent Report Type of Action: Other

Date Sundry Submitted: 07/22/2021 Time Sundry Submitted: 06:22

Date Operation Actually Began: 07/01/2021

Actual Procedure: Franklin Mountain Energy, LLC (FME), Operator of the above captioned well, respectfully submits the attached, updated, C-102 for BLM record.

SR Attachments

Actual Procedure

C_102_Mission_Fed_Com_705H_7_22_2021_20210722182155.pdf

Well Name: MISSION FED COM	Well Location: T25S / R35E / SEC 1 / LOT 2 / 32.16603 / -103.317267	County or Parish/State: LEA / NM
Well Number: 705H	Type of Well: OIL WELL	Allottee or Tribe Name:
Lease Number: NMNM138897	Unit or CA Name:	Unit or CA Number:
US Well Number: 3002548623	Well Status: Producing Oil Well	Operator: FRANKLIN MOUNTAIN ENERGY LLC

Operator

I certify that the foregoing is true and correct. Title 18 U.S.C. Section 1001 and Title 43 U.S.C. Section 1212, make it a crime for any person knowingly and willfully to make to any department or agency of the United States any false, fictitious or fraudulent statements or representations as to any matter within its jurisdiction. Electronic submission of Sundry Notices through this system satisfies regulations requiring a

Operator Electronic Signature: RACHAEL OVERBEY	Signed on: JUL 22, 2021 06:21 PM
Name: FRANKLIN MOUNTAIN ENERGY LLC	
Title: Director – Operations Planning and Regulatory	
Street Address: 44 COOK STREET, SUITE 1000	
City: Denver	State: CO
Phone: (720) 414-7868	
Email address: roverbey@fmellc.com	

Field

Representative Name:		
Street Address:		
City:	State:	Zip:
Phone:		
Email address:		

BLM Point of Contact

BLM POC Name: CHRISTOPHER WALLS	BLM POC Title: Petroleum Engineer
BLM POC Phone: 5752342234	BLM POC Email Address: cwalls@blm.gov
Disposition: Accepted	Disposition Date: 12/21/2021
Signature: Chris Walls	

District I
1625 N. French Dr., Hobbs, NM 88240
Phone: (575) 393-6161 Fax: (575) 393-0720
District II
811 S. First St., Artesia, NM 88210
Phone: (575) 748-1283 Fax: (575) 748-9720
District III
1000 Rio Brazos Road, Aztec, NM 87410
Phone: (505) 334-6178 Fax: (505) 334-6170
District IV
1220 S. St. Francis Dr., Santa Fe, NM 87505
Phone: (505) 476-3460 Fax: (505) 476-3462

State of New Mexico
Energy, Minerals & Natural Resources Department
OIL CONSERVATION DIVISION
1220 South St. Francis Dr.
Santa Fe, NM 87505

Form C-102
Revised August 1, 2011
Submit one copy to appropriate
District Office

☒ AMENDED REPORT

WELL LOCATION AND ACREAGE DEDICATION PLAT

¹ API Number 30-025-48623		² Pool Code 98187		³ Pool Name WC-025 G-09 S253502D; UPR WOLFCAMP	
⁴ Property Code 330443		⁵ Property Name MISSION FED COM			⁶ Well Number 705H
⁷ OGRID No. 373910		⁸ Operator Name FRANKLIN MOUNTAIN ENERGY LLC			⁹ Elevation 3329.1'

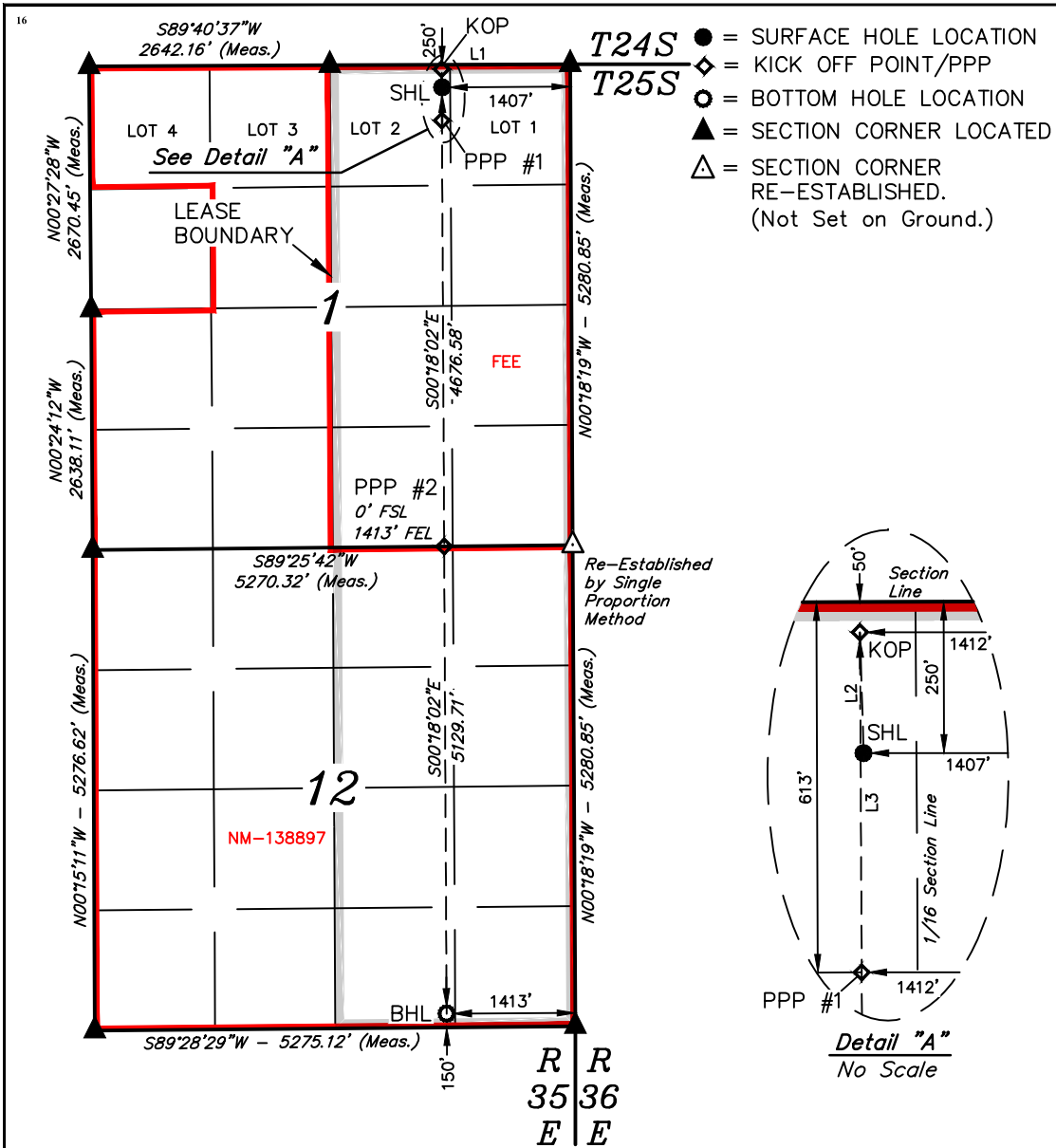
¹⁰ Surface Location

UL or lot no. 2	Section 1	Township 25S	Range 35E	Lot Idn	Feet from the 250	North/South line NORTH	Feet from the 1407	East/West line EAST	County LEA
--------------------	--------------	-----------------	--------------	---------	----------------------	---------------------------	-----------------------	------------------------	---------------

¹¹ Bottom Hole Location If Different From Surface

UL or lot no. O	Section 12	Township 25S	Range 35E	Lot Idn	Feet from the 150	North/South line SOUTH	Feet from the 1413	East/West line EAST	County LEA
¹² Dedicated Acres 640.4		¹³ Joint or Infill		¹⁴ Consolidation Code		¹⁵ Order No.			

No allowable will be assigned to this completion until all interests have been consolidated or a non-standard unit has been approved by the division.



- = SURFACE HOLE LOCATION
- ◆ = KICK OFF POINT/PPP
- = BOTTOM HOLE LOCATION
- ▲ = SECTION CORNER LOCATED
- △ = SECTION CORNER RE-ESTABLISHED. (Not Set on Ground.)

¹⁷ OPERATOR
CERTIFICATION

I hereby certify that the information contained herein is true and complete to the best of my knowledge and belief, and that this organization either owns a working interest or unleased mineral interest in the land including the proposed bottom hole location or has a right to drill this well at this location pursuant to a contract with an owner of such a mineral or working interest, or to a voluntary pooling agreement or a compulsory pooling order heretofore entered by the division.

Signature: *Shelly Albrecht* Date: 7/22/2021

Printed Name: Shelly Albrecht

E-mail Address: salbrecht@fmellc.com

¹⁸ SURVEYOR
CERTIFICATION

I hereby certify that the well location shown on this plat was plotted from field notes of actual surveys made by me or under my supervision, and that the same is true and correct to the best of my belief.

February 13, 2020

Date of Survey
Signature and Seal of Professional Surveyor:



Certificate Number:

LINE TABLE

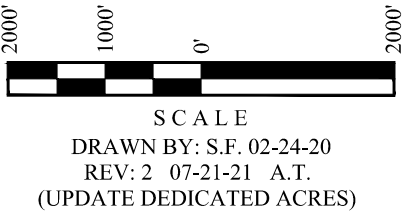
LINE	DIRECTION	LENGTH
L1	S89°46'55"W	2639.71'
L2	N01°45'58"W	200.15'
L3	S00°18'03"E	563.07'

- NOTE:
- Distances referenced on plat to section lines are perpendicular.
 - Basis of Bearing is a Transverse Mercator Projection with a Central Meridian of W103°53'00" (NAD 83)

NAD 83 (SURFACE HOLE LOCATION) LATITUDE = 32°09'57.71" (32.166030°) LONGITUDE = 103°19'02.16" (103.317267°)	NAD 83 (KICK OFF POINT) LATITUDE = 32°09'59.69" (32.166580°) LONGITUDE = 103°19'02.22" (103.317283°)
NAD 27 (SURFACE HOLE LOCATION) LATITUDE = 32°09'57.25" (32.165903°) LONGITUDE = 103°19'00.49" (103.316802°)	NAD 27 (KICK OFF POINT) LATITUDE = 32°09'59.23" (32.166453°) LONGITUDE = 103°19'00.55" (103.316819°)
STATE PLANE NAD 83 (N.M. EAST) N: 425620.89' E: 855744.26'	STATE PLANE NAD 83 (N.M. EAST) N: 425820.89' E: 855737.26'
STATE PLANE NAD 27 (N.M. EAST) N: 425562.08' E: 814557.78'	STATE PLANE NAD 27 (N.M. EAST) N: 425762.07' E: 814550.79'

NAD 83 (PPP #1) LATITUDE = 32°09'54.12" (32.165032°) LONGITUDE = 103°19'02.22" (103.317283°)	NAD 83 (PPP #2) LATITUDE = 32°09'07.85" (32.152180°) LONGITUDE = 103°19'02.22" (103.317284°)
NAD 27 (PPP #1) LATITUDE = 32°09'53.66" (32.164905°) LONGITUDE = 103°19'00.55" (103.316819°)	NAD 27 (PPP #2) LATITUDE = 32°09'07.39" (32.152053°) LONGITUDE = 103°19'00.55" (103.316820°)
STATE PLANE NAD 83 (N.M. EAST) N: 425257.93' E: 855742.57'	STATE PLANE NAD 83 (N.M. EAST) N: 420582.24' E: 855786.64'
STATE PLANE NAD 27 (N.M. EAST) N: 425199.13' E: 814556.07'	STATE PLANE NAD 27 (N.M. EAST) N: 420523.56' E: 814599.96'

NAD 83 (BOTTOM HOLE LOCATION) LATITUDE = 32°08'17.10" (32.138082°) LONGITUDE = 103°19'02.22" (103.317284°)	NAD 27 (BOTTOM HOLE LOCATION) LATITUDE = 32°08'16.64" (32.137955°) LONGITUDE = 103°19'00.55" (103.316820°)
STATE PLANE NAD 83 (N.M. EAST) N: 415453.50' E: 855834.96'	STATE PLANE NAD 27 (N.M. EAST) N: 415394.96' E: 814648.09'



District I
1625 N. French Dr., Hobbs, NM 88240
Phone:(575) 393-6161 Fax:(575) 393-0720
District II
811 S. First St., Artesia, NM 88210
Phone:(575) 748-1283 Fax:(575) 748-9720
District III
1000 Rio Brazos Rd., Aztec, NM 87410
Phone:(505) 334-6178 Fax:(505) 334-6170
District IV
1220 S. St Francis Dr., Santa Fe, NM 87505
Phone:(505) 476-3470 Fax:(505) 476-3462

State of New Mexico
Energy, Minerals and Natural Resources
Oil Conservation Division
1220 S. St Francis Dr.
Santa Fe, NM 87505

CONDITIONS

Action 246674

CONDITIONS

Operator: Franklin Mountain Energy LLC 44 Cook Street, Suite 1000 Denver, CO 80206	OGRID: 373910
	Action Number: 246674
	Action Type: [C-103] NOI Change of Plans (C-103A)

CONDITIONS

Created By	Condition	Condition Date
pkautz	None	9/7/2023