

Well Name: TATER TOT 2-35 FED COM	Well Location: T24S / R29E / SEC 2 / SWSE /	County or Parish/State:
Well Number: 332H	Type of Well: OIL WELL	Allottee or Tribe Name:
Lease Number: NMNM103604	Unit or CA Name:	Unit or CA Number:
US Well Number: 3001549054	Well Status: Approved Application for Permit to Drill	Operator: DEVON ENERGY PRODUCTION COMPANY LP

Notice of Intent

Sundry ID: 2742379

Type of Submission: Notice of Intent	Type of Action: APD Change
Date Sundry Submitted: 07/26/2023	Time Sundry Submitted: 12:03
Date proposed operation will begin: 07/24/2023	

**Procedure Description:** Devon Energy Production Co., L.P. (Devon) respectfully requests to change the well name, BHL, and dedicated spacing on the subject well. Please see attached revised C102, drill plan (break test variance included), and directional plan. Permitted Well name: TATER TOT 2-35 STATE FED COM 332H Proposed Well name: TATER TOT 2-35 FED COM 332H Permitted BHL: SESW 970 FSL, 2310 FWL, 35-23S-29E Proposed BHL: NENW 20 FNL, 1690 FWL, 35-23S-29E New leases have been added since approved APD and notification has been given.

NOI Attachments

Procedure Description

- WA018301885\_TATER\_TOT\_2\_35\_FED\_COM\_332H\_WL\_R2\_20230828105901.pdf
- Tater\_Tot\_2\_35\_\_Fed\_Com\_332H\_20230724095117.pdf
- Tater\_Tot\_2\_35\_\_Fed\_Com\_332H\_Directional\_Plan\_07\_18\_23\_20230724095118.pdf
- 5.5\_17lb\_P110RY\_DWC\_C\_20230724095116.pdf
- break\_test\_variance\_BOP\_20230724095117.pdf
- 8.625in\_32lb\_P110EC\_SPRINT\_FJ\_09.16.2022\_20230724095118.pdf
- 10.750\_45.5\_J55\_SEAH\_20230724095117.pdf

Received by OCD: 10/15/2023 10:44:50 AM

Page 2 of 32

Well Name: TATER TOT 2-35 FED COM	Well Location: T24S / R29E / SEC 2 / SWSE /	County or Parish/State:
Well Number: 332H	Type of Well: OIL WELL	Allottee or Tribe Name:
Lease Number: NMNM103604	Unit or CA Name:	Unit or CA Number:
US Well Number: 3001549054	Well Status: Approved Application for Permit to Drill	Operator: DEVON ENERGY PRODUCTION COMPANY LP

Conditions of Approval

Additional

2\_24\_29\_O\_Sundry\_ID\_2742379\_Tater\_Tot\_2\_35\_State\_Fed\_Com\_332H\_20230822071116.pdf  
Tater\_Tot\_2\_35\_State\_Fed\_Com\_332H\_Dr\_COA\_Sundry\_ID\_2742379\_20230822071116.pdf

Operator

I certify that the foregoing is true and correct. Title 18 U.S.C. Section 1001 and Title 43 U.S.C. Section 1212, make it a crime for any person knowingly and willfully to make to any department or agency of the United States any false, fictitious or fraudulent statements or representations as to any matter within its jurisdiction. Electronic submission of Sundry Notices through this system satisfies regulations requiring a

Operator Electronic Signature: SHAYDA OMOUMI  
Signed on: AUG 28, 2023 10:59 AM  
Name: DEVON ENERGY PRODUCTION COMPANY LP  
Title: Regulatory Compliance Associate 3  
Street Address: 333 W SHERIDAN AVE  
City: OKLAHOMA CITY State: OK  
Phone: (405) 235-3611  
Email address: SHAYDA.OMOUMI@DVN.COM

Field

Representative Name:  
Street Address:  
City: State: Zip:  
Phone:  
Email address:

BLM Point of Contact

BLM POC Name: CHRISTOPHER WALLS  
BLM POC Phone: 5752342234  
Disposition: Approved  
Signature: Chris Walls  
BLM POC Title: Petroleum Engineer  
BLM POC Email Address: cwalls@blm.gov  
Disposition Date: 10/13/2023

District I  
1625 N. French Dr., Hobbs, NM 88240  
Phone: (575) 393-6161 Fax: (575) 393-0720  
District II  
811 S. First St., Artesia, NM 88210  
Phone: (575) 748-1283 Fax: (575) 748-9720  
District III  
1000 Rio Brazos Road, Aztec, NM 87410  
Phone: (505) 334-6178 Fax: (505) 334-6170  
District IV  
1220 S. St. Francis Dr., Santa Fe, NM 87505  
Phone: (505) 476-3460 Fax: (505) 476-3462

State of New Mexico  
Energy, Minerals & Natural Resources Department  
OIL CONSERVATION DIVISION  
1220 South St. Francis Dr.  
Santa Fe, NM 87505

Form C-102  
Revised August 1, 2011  
Submit one copy to appropriate  
District Office  
☐ AMENDED REPORT

## WELL LOCATION AND ACREAGE DEDICATION PLAT

<sup>1</sup> API Number 30-015-49054	<sup>2</sup> Pool Code 11520	<sup>3</sup> Pool Name CEDAR CANYON;BONE SPRING
<sup>4</sup> Property Code 331701	<sup>5</sup> Property Name TATER TOT 2-35 FED COM	<sup>6</sup> Well Number 332H
<sup>7</sup> OGRID No. 6137	<sup>8</sup> Operator Name DEVON ENERGY PRODUCTION COMPANY, L.P.	<sup>9</sup> Elevation 3092.6

<sup>10</sup> Surface Location

UL or lot no.	Section	Township	Range	Lot Idn	Feet from the	North/South line	Feet from the	East/West line	County
O	2	24 S	29 E		200	SOUTH	2125	EAST	EDDY

<sup>11</sup> Bottom Hole Location If Different From Surface

UL or lot no.	Section	Township	Range	Lot Idn	Feet from the	North/South line	Feet from the	East/West line	County
C	35	23 S	29 E		20	NORTH	1690	WEST	EDDY

<sup>12</sup> Dedicated Acres 319.66	<sup>13</sup> Joint or Infill	<sup>14</sup> Consolidation Code	<sup>15</sup> Order No.
---	-------------------------------	----------------------------------	-------------------------

No allowable will be assigned to this completion until all interests have been consolidated or a non-standard unit has been approved by the division.

	<p><b>TATER TOT 2-35 FED COM 332H</b> EL. = 3092.6 GEODETIC COORDINATES NAD 83 NMSP EAST SURFACE LOCATION N. = 451245.86 E. = 658774.80 LAT. = 32.2399799°N LONG. = 103.9534973°W</p> <p>KICK OFF POINT CALLS 50' FSL 1690' FWL N. = 451089.1 E. = 657285.1 LAT. = 32.23947025°N LONG. = 103.95832130°W</p> <p>FIRST TAKE POINT (PPP 1) 100' FSL, 1690' FWL N. = 451137.97 E. = 657283.67 LAT. = 32.2396977°N LONG. = 103.9583213°W</p> <p>LAST TAKE POINT 100' FSL, 1690' FWL N. = 461550.06 E. = 657177.41 LAT. = 32.2683198°N LONG. = 103.9585474°W</p> <p>BOTTOM OF HOLE 20' FSL, 1690' FWL N. = 461630.04 E. = 657176.55 LAT. = 32.2685397°N LONG. = 103.9585493°W</p> <p>PPP 2 0' FSL, 1688' FWL N. = 456333.57 E. = 657230.65 LAT. = 32.2539801°N LONG. = 103.9584341°W</p> <p>PPP 3 1329' FSL, 1688' FWL N. = 457662.47 E. = 657217.08 LAT. = 32.2576331°N LONG. = 103.9584630°W</p> <p>PPP 4 1330' FSL, 1689' FWL N. = 460320.77 E. = 657189.96 LAT. = 32.2649406°N LONG. = 103.9585207°W</p> <p>CORNER COORDINATES TABLE NAD 83 NMSP EAST</p> <table border="1"> <tr><td>A - N. = 461665.81</td><td>E. = 660817.24</td></tr> <tr><td>B - N. = 461654.17</td><td>E. = 658151.73</td></tr> <tr><td>C - N. = 461642.89</td><td>E. = 655486.69</td></tr> <tr><td>D - N. = 458986.32</td><td>E. = 655515.09</td></tr> <tr><td>E - N. = 456329.76</td><td>E. = 655543.48</td></tr> <tr><td>F - N. = 453684.45</td><td>E. = 655569.24</td></tr> <tr><td>G - N. = 451030.14</td><td>E. = 655595.01</td></tr> <tr><td>H - N. = 451042.47</td><td>E. = 658249.35</td></tr> <tr><td>I - N. = 451059.78</td><td>E. = 660901.66</td></tr> <tr><td>J - N. = 453693.03</td><td>E. = 660870.74</td></tr> <tr><td>K - N. = 456341.71</td><td>E. = 660848.02</td></tr> <tr><td>L - N. = 459002.24</td><td>E. = 660831.98</td></tr> <tr><td>M - N. = 456335.75</td><td>E. = 658196.75</td></tr> </table> <p>LEGEND --- SECTION LINE --- QUARTER LINE --- LEASE LINE --- WELL PATH</p>	A - N. = 461665.81	E. = 660817.24	B - N. = 461654.17	E. = 658151.73	C - N. = 461642.89	E. = 655486.69	D - N. = 458986.32	E. = 655515.09	E - N. = 456329.76	E. = 655543.48	F - N. = 453684.45	E. = 655569.24	G - N. = 451030.14	E. = 655595.01	H - N. = 451042.47	E. = 658249.35	I - N. = 451059.78	E. = 660901.66	J - N. = 453693.03	E. = 660870.74	K - N. = 456341.71	E. = 660848.02	L - N. = 459002.24	E. = 660831.98	M - N. = 456335.75	E. = 658196.75	<p><b><sup>17</sup> OPERATOR CERTIFICATION</b> I hereby certify that the information contained herein is true and complete to the best of my knowledge and belief, and that this organization either owns a working interest or unleased mineral interest in the land including the proposed bottom hole location or has a right to drill this well at this location pursuant to a contract with an owner of such a mineral or working interest, or to a voluntary pooling agreement or a compulsory pooling order heretofore entered by the division.</p> <p><i>Shayda Omoumi</i> 7/19/2023 Signature Date Shayda Omoumi Printed Name shayda.omoumi@dvn.com E-mail Address</p> <p><b><sup>18</sup> SURVEYOR CERTIFICATION</b> I hereby certify that the well location shown on this plat was plotted from field notes of actual surveys made by me or under my supervision, and that the same is true and correct to the best of my belief.</p> <p>JUNE 20, 2023 Date of Survey</p> <p><i>Shayda Omoumi</i> Signature and Seal of Professional Surveyor Certificate Number: 12797 Surveyor No. 8842B</p>
	A - N. = 461665.81	E. = 660817.24																										
	B - N. = 461654.17	E. = 658151.73																										
C - N. = 461642.89	E. = 655486.69																											
D - N. = 458986.32	E. = 655515.09																											
E - N. = 456329.76	E. = 655543.48																											
F - N. = 453684.45	E. = 655569.24																											
G - N. = 451030.14	E. = 655595.01																											
H - N. = 451042.47	E. = 658249.35																											
I - N. = 451059.78	E. = 660901.66																											
J - N. = 453693.03	E. = 660870.74																											
K - N. = 456341.71	E. = 660848.02																											
L - N. = 459002.24	E. = 660831.98																											
M - N. = 456335.75	E. = 658196.75																											

Intent ☒ As Drilled ☐

API #		
Operator Name: DEVON ENERGY PRODUCTION COMPANY, L.P.	Property Name: TATER TOT 2-35 FED COM	Well Number 332H

## Kick Off Point (KOP)

UL	Section	Township	Range	Lot	Feet	From N/S	Feet	From E/W	County
N	2	24S	29E		50	SOUTH	1690	WEST	EDDY
Latitude 32.23947025					Longitude -103.95832130				NAD 83

## First Take Point (FTP)

UL	Section	Township	Range	Lot	Feet	From N/S	Feet	From E/W	County
N	2	24S	29E		100	SOUTH	1690	WEST	EDDY
Latitude 32.2396977					Longitude 103.9583213				NAD 83

## Last Take Point (LTP)

UL	Section	Township	Range	Lot	Feet	From N/S	Feet	From E/W	County
C	35	23S	29E		100	NORTH	1690	WEST	EDDY
Latitude 32.2683198					Longitude 103.9585474				NAD 83

Is this well the defining well for the Horizontal Spacing Unit?

☒

Is this well an infill well?

☐

If infill is yes please provide API if available, Operator Name and well number for Defining well for Horizontal Spacing Unit.

API #		
Operator Name:	Property Name:	Well Number

KZ 06/29/2018



10-3/4"   45.50#   0.400"   J-55

**Dimensions (Nominal)**

Outside Diameter	10.750	in.
Wall	0.400	in.
Inside Diameter	9.950	in.
Drift	9.875	in.
Weight, T&C	45.500	lbs/ft
Weight, PE	44.260	lbs/ft

**Internal Yield Pressure at Minimum Yield**

Collapse	2090	psi
----------	------	-----

**Internal Yields Pressure**

PE	3580	psi
STC	3580	psi
BTC	3580	psi

Yield Strength, Pipe Body	715	1000 lbs
---------------------------	-----	----------

**Joint Strength, STC**

STC	493	1000 lbs
BTC	796	1000 lbs

Note: SeAH Steel has produced this specification sheet for general information only. SeAH does not assume liability or responsibility for any loss or injury resulting from the use of information or data contained herein. All applications for the material described are at the customer's own risk and responsibility.

### Technical Specifications

Connection Type:	Size(O.D.):	Weight (Wall):	Grade:
DWC/C Casing standard	5-1/2 in	17.00 lb/ft (0.304 in)	P-110RY

	Material
P-110RY	Grade
110,000	Minimum Yield Strength (psi)
125,000	Minimum Ultimate Strength (psi)

	Pipe Dimensions
5.500	Nominal Pipe Body O.D. (in)
4.892	Nominal Pipe Body I.D.(in)
0.304	Nominal Wall Thickness (in)
17.00	Nominal Weight (lbs/ft)
16.89	Plain End Weight (lbs/ft)
4.962	Nominal Pipe Body Area (sq in)

	Pipe Body Performance Properties
546,000	Minimum Pipe Body Yield Strength (lbs)
7,480	Minimum Collapse Pressure (psi)
10,640	Minimum Internal Yield Pressure (psi)
9,700	Hydrostatic Test Pressure (psi)

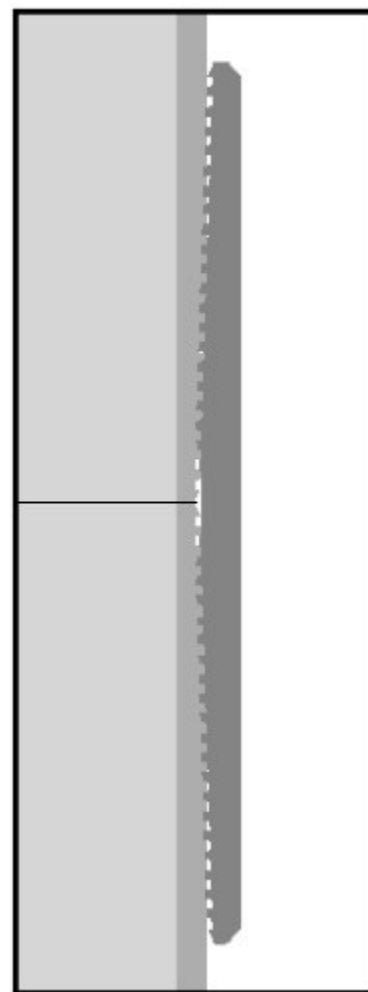
	Connection Dimensions
6.050	Connection O.D. (in)
4.892	Connection I.D. (in)
4.767	Connection Drift Diameter (in)
4.13	Make-up Loss (in)
4.962	Critical Area (sq in)
100.0	Joint Efficiency (%)

	Connection Performance Properties
546,000	Joint Strength (lbs)
22,940	Reference String Length (ft) 1.4 Design Factor
568,000	API Joint Strength (lbs)
546,000	Compression Rating (lbs)
7,480	API Collapse Pressure Rating (psi)
10,640	API Internal Pressure Resistance (psi)
91.7	Maximum Uniaxial Bend Rating [degrees/100 ft]

	Appoximated Field End Torque Values
12,000	Minimum Final Torque (ft-lbs)
13,800	Maximum Final Torque (ft-lbs)
15,500	Connection Yield Torque (ft-lbs)



VAM-USA  
4424 W. Sam Houston Pkwy. Suite 150  
Houston, TX 77041  
Phone: 713-479-3200  
Fax: 713-479-3234  
E-mail: [VAMUSAsales@vam-usa.com](mailto:VAMUSAsales@vam-usa.com)



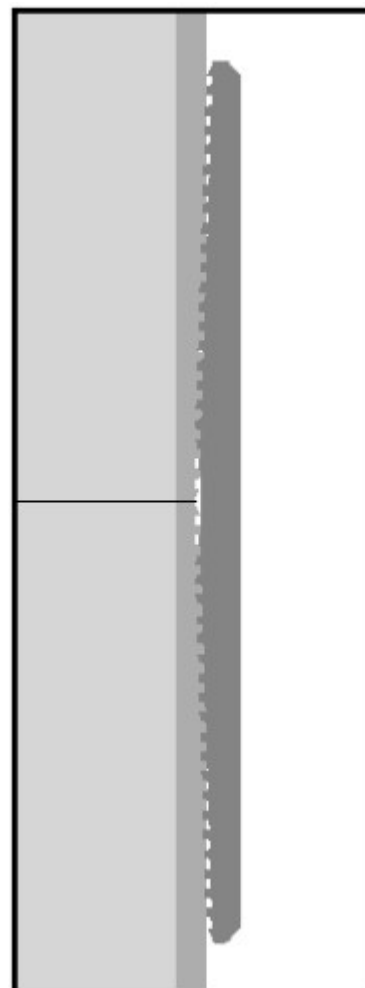
For detailed information on performance properties, refer to DWC Connection Data Notes on following page(s).

Connection specifications within the control of VAM-USA were correct as of the date printed. Specifications are subject to change without notice. Certain connection specifications are dependent on the mechanical properties of the pipe. Mechanical properties of mill proprietary pipe grades were obtained from mill publications and are subject to change. Properties of mill proprietary grades should be confirmed with the mill. Users are advised to obtain current connection specifications and verify pipe mechanical properties for each application.

11/13/2013 3:17:42 PM

**DWC Connection Data Notes:**

1. DWC connections are available with a seal ring (SR) option.
2. All standard DWC/C connections are interchangeable for a give pipe OD. DWC connections are interchangeable with DWC/C-SR connections of the same OD and wall.
3. Connection performance properties are based on nominal pipe body and connection dimensions.
4. DWC connection internal and external pressure resistance is calculated using the API rating for buttress connections. API Internal pressure resistance is calculated from formulas 31, 32, and 35 in the API Bulletin 5C3.
5. DWC joint strength is the minimum pipe body yield strength multiplied by the connection critical area.
6. API joint strength is for reference only. It is calculated from formulas 42 and 43 in the API Bulletin 5C3.
7. Bending efficiency is equal to the compression efficiency.
8. The torque values listed are recommended. The actual torque required may be affected by field conditions such as temperature, thread compound, speed of make-up, weather conditions, etc.
9. Connection yield torque is not to be exceeded.
10. Reference string length is calculated by dividing the joint strength by both the nominal weight in air and a design factor (DF) of 1.4. These values are offered for reference only and do not include load factors such as bending, buoyancy, temperature, load dynamics, etc.
11. DWC connections will accommodate API standard drift diameters.



Connection specifications within the control of VAM-USA were correct as of the date printed. Specifications are subject to change without notice. Certain connection specifications are dependent on the mechanical properties of the pipe. Mechanical properties of mill proprietary pipe grades were obtained from mill publications and are subject to change. Properties of mill proprietary grades should be confirmed with the mill. Users are advised to obtain current connection specifications and verify pipe mechanical properties for each application.

11/13/2013 3:17:42 PM



Issued on: 16 Sep. 2022 by Logan Van Gorp



## Connection Data Sheet

## HIGHER TORQUE VERSION

OD	Weight (lb/ft)	Wall Th.	Grade	Alt. Drift:	Connection
8 5/8 in.	Nominal: 32.00 Plain End: 31.13	0.352 in.	P110EC	7.875 in.	VAM® SPRINT-FJ

PIPE PROPERTIES		
Nominal OD	8.625	in.
Nominal ID	7.921	in.
Nominal Cross Section Area	9.149	sqin.
Grade Type	High Yield	
Min. Yield Strength	125	ksi
Max. Yield Strength	140	ksi
Min. Ultimate Tensile Strength	135	ksi

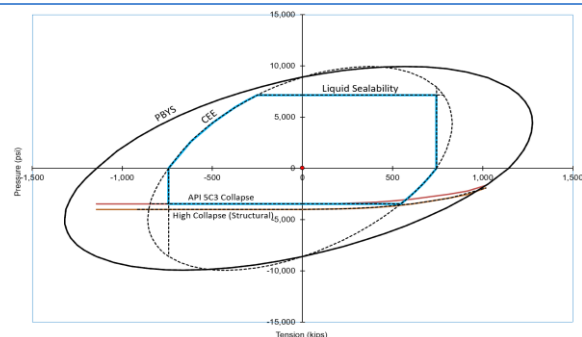
CONNECTION PROPERTIES		
Connection Type	Semi-Premium Integral Flush	
Connection OD (nom):	8.665	in.
Connection ID (nom):	7.954	in.
Make-Up Loss	2.614	in.
Critical Cross Section	5.978	sqin.
Tension Efficiency	65.0	% of pipe
Compression Efficiency	65.0	% of pipe
Internal Pressure Efficiency	80.0	% of pipe
External Pressure Efficiency	100	% of pipe

CONNECTION PERFORMANCES		
Tensile Yield Strength	744	klb
Compression Resistance	744	klb
Max. Internal Pressure	7,150	psi
Structural Collapse Resistance	4,000	psi
Max. Structural Bending	41	°/100ft
Max. Bending with Sealability	10	°/100ft

\* 87.5% RBW

TORQUE VALUES		
Min. Make-up torque	23,000	ft.lb
Opt. Make-up torque	25,500	ft.lb
Max. Make-up torque	28,000	ft.lb
Max. Torque with Sealability (MTS)	48,000	ft.lb

**VAM® SPRINT-FJ** is a semi-premium flush connection designed for shale applications, where maximum clearance and high tension capacity are required for intermediate casing strings.



canada@vamfieldservice.com  
usa@vamfieldservice.com  
mexico@vamfieldservice.com  
brazil@vamfieldservice.com

Do you need help on this product? - Remember no one knows VAM® like VAM®

uk@vamfieldservice.com  
dubai@vamfieldservice.com  
nigeria@vamfieldservice.com  
angola@vamfieldservice.com

china@vamfieldservice.com  
baku@vamfieldservice.com  
singapore@vamfieldservice.com  
australia@vamfieldservice.com

Over 140 VAM® Specialists available worldwide 24/7 for Rig Site Assistance





## Section 2 - Blowout Preventer Testing Procedure

### Variance Request

Devon Energy requests to only test BOP connection breaks after drilling out of surface casing and while skidding between wells which conforms to API Standard 53 and industry standards. This test will include the Top Pipe Rams, HCR, Kill Line Check Valve, QDC (quick disconnect to wellhead) and Shell of the 10M BOPE to 5M for 10 minutes. If a break to the flex hose that runs to the choke manifold is required due to repositioning from a skid, the HCR will remain open during the shell test to include that additional break. The variance only pertains to intermediate hole-sections and no deeper than the Bone Springs Formation where 5M BOP tests are required. The initial BOP test will follow OOGO2.III.A.2.i, and subsequent tests following a skid will only test connections that are broken. The annular preventer will be tested to 100% working pressure. This variance will meet or exceed OOGO2.III.A.2.i per the following: Devon Energy will perform a full BOP test per OOGO2.III.A.2.i before drilling out of the intermediate casing string(s) and starting the production hole, before starting any hole section that requires a 10M test, before the expiration of the allotted 14-days for 5M intermediate batch drilling or when the drilling rig is fully mobilized to a new well pad, whichever is sooner. We will utilize a 200' TVD tolerance between intermediate shoes as the cutoff for a full BOP test. The BLM will be contacted 4hrs prior to a BOPE test. The BLM will be notified if and when a well control event is encountered. Break test will be a 14 day interval and not a 30 day full BOPE test interval. If in the event break testing is not utilized, then a full BOPE test would be conducted.

1. Well Control Response:
  1. Primary barrier remains fluid
  2. In the event of an influx due to being underbalanced and after a realized gain or flow, the order of closing BOPE is as follows:
    - a) Annular first
    - b) If annular were to not hold, Upper pipe rams second (which were tested on the skid BOP test)
    - c) If the Upper Pipe Rams were to not hold, Lower Pipe Rams would be third

**Cactus**  
Wellhead

2-9-17  
E Bell

80.7 °F

15:49



50

Date 02-09-17

Tested By E.BELL

Transducer bay2

Transducer Serial 181504

Calibration Date 9/6/15

	Job#	Part#	Serial#	Description	Test Pressure
1	TRJ0006341-0007	116966	TRJ6341-7-1	ADPT,DRLG,CW,MBU-3T,13-5/8 10M	15000
2					
3					
4					
5				TRANSDUCER CALIBRATION DUE 03/13/2017	
6					
7					
8					



Start



Stop



Zero



Config



Save



Print

EXIT

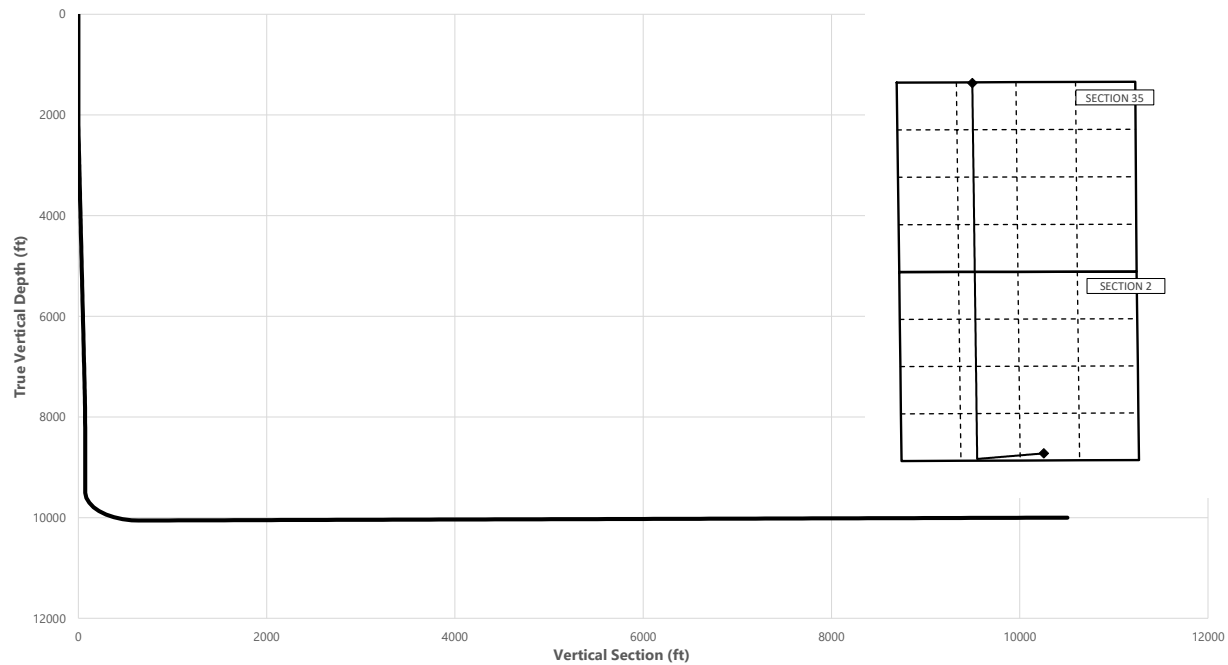
Tater Tot 2-35 Fed Com 332H



**Well:** Tater Tot 2-35 Fed Com 332H  
**County:** Eddy  
**Wellbore:** Permit Plan  
**Design:** Permit Plan #1

**Geodetic System:** US State Plane 1983  
**Datum:** North American Datum 1927  
**Ellipsoid:** Clarke 1866  
**Zone:** 3001 - NM East (NAD83)

MD (ft)	INC (°)	AZI (°)	TVD (ft)	NS (ft)	EW (ft)	VS (ft)	DLS (°/100ft)	Comment
0.00	0.00	0.00	0.00	0.00	0.00	0.00	0.00	SHL
2000.00	0.00	264.00	2000.00	0.00	0.00	0.00	0.00	Start Tangent
2500.00	15.00	264.00	2494.31	-6.80	-64.72	3.12	2.00	Hold Tangent
7658.87	15.00	264.00	7477.40	-146.37	-1392.62	67.18	0.00	Drop to Vertical
8408.87	0.00	264.00	8218.86	-156.57	-1489.70	71.86	2.00	Hold Vertical
9674.07	0.00	359.41	9484.05	-156.57	-1489.70	71.86	0.00	KOP
10577.34	90.33	359.41	10057.00	419.63	-1495.63	642.26	10.00	Landing Point
20542.59	90.33	359.41	10000.00	10384.18	-1598.25	10506.46	0.00	BHL



Key Depths	MD (ft)	TVD (ft)
Rustler	260.00	260.00
Salt	570.00	570.00
Base of Salt	3018.35	2995.00
Delaware	3228.52	3198.00
Cherry Canyon	4136.45	4075.00
Brushy Canyon	5780.47	5663.00
1st Bone Spring Lime	7051.79	6891.00
Bone Spring 1st	8133.59	7944.00
Bone Spring 2nd	8862.01	8672.00
3rd Bone Spring Lime	9261.01	9071.00
Bone Spring 3rd / Point of Penetration	10096.17	9869.00
exit	20462.59	10000.47

	MD (ft)	TVD (ft)	Lat (°)	Long (°)	Section Footages
SHL	0.00	0.00	32.2399	-103.9536	200' FSL, 2125' FEL of Sec 2 in T24S, R29E
KOP	9674.07	9484.05	32.2395	-103.9584	50' FSL, 1691' FWL of Sec 2 in T24S, R29E
Point of Penetration	10096.17	9869.00	32.2397	-103.9583	100' FSL, 1690' FWL of Sec 2 in T24S, R29E
Exit	20462.59	10000.47	32.2683	-103.9585	100' FNL, 1690' FWL of Sec 35 in T23S, R29E
BHL	20542.59	10000.00	32.2684	-103.9586	20' FSL, 1690' FWL of Sec 35 in T23S, R29E

Y X MD  
KOP 451089 657285.1 9674.07

Tater Tot 2-35 Fed Com 332H



Well: Tater Tot 2-35 Fed Com 332H

County: Eddy

Wellbore: Permit Plan

Design: Permit Plan #1

Geodetic System: US State Plane 1983

Datum: North American Datum 1927

Ellipsoid: Clarke 1866

Zone: 3001 - NM East (NAD83)

MD (ft)	INC (")	AZI (°)	TVD (ft)	NS (ft)	EW (ft)	VS (ft)	DLS (°/100ft)	Comment
0.00	0.00	0.00	0.00	0.00	0.00	0.00	0.00	SHL
100.00	0.00	264.00	100.00	0.00	0.00	0.00	0.00	
200.00	0.00	264.00	200.00	0.00	0.00	0.00	0.00	
260.00	0.00	264.00	260.00	0.00	0.00	0.00	0.00	Rustler
300.00	0.00	264.00	300.00	0.00	0.00	0.00	0.00	
400.00	0.00	264.00	400.00	0.00	0.00	0.00	0.00	
500.00	0.00	264.00	500.00	0.00	0.00	0.00	0.00	
570.00	0.00	264.00	570.00	0.00	0.00	0.00	0.00	Salt
600.00	0.00	264.00	600.00	0.00	0.00	0.00	0.00	
700.00	0.00	264.00	700.00	0.00	0.00	0.00	0.00	
800.00	0.00	264.00	800.00	0.00	0.00	0.00	0.00	
900.00	0.00	264.00	900.00	0.00	0.00	0.00	0.00	
1000.00	0.00	264.00	1000.00	0.00	0.00	0.00	0.00	
1100.00	0.00	264.00	1100.00	0.00	0.00	0.00	0.00	
1200.00	0.00	264.00	1200.00	0.00	0.00	0.00	0.00	
1300.00	0.00	264.00	1300.00	0.00	0.00	0.00	0.00	
1400.00	0.00	264.00	1400.00	0.00	0.00	0.00	0.00	
1500.00	0.00	264.00	1500.00	0.00	0.00	0.00	0.00	
1600.00	0.00	264.00	1600.00	0.00	0.00	0.00	0.00	
1700.00	0.00	264.00	1700.00	0.00	0.00	0.00	0.00	
1800.00	0.00	264.00	1800.00	0.00	0.00	0.00	0.00	
1900.00	0.00	264.00	1900.00	0.00	0.00	0.00	0.00	
2000.00	0.00	264.00	2000.00	0.00	0.00	0.00	0.00	Start Tangent
2100.00	3.00	264.00	2099.95	-0.27	-2.60	0.13	3.00	
2200.00	6.00	264.00	2199.63	-1.09	-10.41	0.50	3.00	
2300.00	9.00	264.00	2298.77	-2.46	-23.38	1.13	3.00	
2400.00	12.00	264.00	2397.08	-4.36	-41.51	2.00	3.00	
2500.00	15.00	264.00	2494.31	-6.80	-64.72	3.12	2.00	Hold Tangent
2600.00	15.00	264.00	2590.90	-9.51	-90.46	4.36	0.00	
2700.00	15.00	264.00	2687.49	-12.21	-116.20	5.61	0.00	
2800.00	15.00	264.00	2784.09	-14.92	-141.94	6.85	0.00	
2900.00	15.00	264.00	2880.68	-17.62	-167.68	8.09	0.00	
3000.00	15.00	264.00	2977.27	-20.33	-193.42	9.33	0.00	
3018.35	15.00	264.00	2995.00	-20.83	-198.15	9.56	0.00	Base of Salt
3100.00	15.00	264.00	3073.86	-23.04	-219.16	10.57	0.00	
3200.00	15.00	264.00	3170.46	-25.74	-244.90	11.81	0.00	
3228.52	15.00	264.00	3198.00	-26.51	-252.24	12.17	0.00	Delaware
3300.00	15.00	264.00	3267.05	-28.45	-270.64	13.06	0.00	
3400.00	15.00	264.00	3363.64	-31.15	-296.38	14.30	0.00	
3500.00	15.00	264.00	3460.23	-33.86	-322.12	15.54	0.00	
3600.00	15.00	264.00	3556.83	-36.56	-347.86	16.78	0.00	
3700.00	15.00	264.00	3653.42	-39.27	-373.60	18.02	0.00	
3800.00	15.00	264.00	3750.01	-41.97	-399.34	19.26	0.00	
3900.00	15.00	264.00	3846.60	-44.68	-425.08	20.50	0.00	
4000.00	15.00	264.00	3943.20	-47.38	-450.82	21.75	0.00	
4100.00	15.00	264.00	4039.79	-50.09	-476.56	22.99	0.00	
4136.45	15.00	264.00	4075.00	-51.08	-485.94	23.44	0.00	Cherry Canyon
4200.00	15.00	264.00	4136.38	-52.80	-502.30	24.23	0.00	
4300.00	15.00	264.00	4232.97	-55.50	-528.04	25.47	0.00	
4400.00	15.00	264.00	4329.57	-58.21	-553.78	26.71	0.00	
4500.00	15.00	264.00	4426.16	-60.91	-579.52	27.95	0.00	
4600.00	15.00	264.00	4522.75	-63.62	-605.26	29.20	0.00	
4700.00	15.00	264.00	4619.34	-66.32	-631.00	30.44	0.00	
4800.00	15.00	264.00	4715.94	-69.03	-656.74	31.68	0.00	
4900.00	15.00	264.00	4812.53	-71.73	-682.48	32.92	0.00	
5000.00	15.00	264.00	4909.12	-74.44	-708.22	34.16	0.00	
5100.00	15.00	264.00	5005.72	-77.15	-733.96	35.40	0.00	
5200.00	15.00	264.00	5102.31	-79.85	-759.70	36.65	0.00	
5300.00	15.00	264.00	5198.90	-82.56	-785.44	37.89	0.00	
5400.00	15.00	264.00	5295.49	-85.26	-811.18	39.13	0.00	
5500.00	15.00	264.00	5392.09	-87.97	-836.92	40.37	0.00	
5600.00	15.00	264.00	5488.68	-90.67	-862.66	41.61	0.00	
5700.00	15.00	264.00	5585.27	-93.38	-888.40	42.85	0.00	
5780.47	15.00	264.00	5663.00	-95.56	-909.12	43.85	0.00	Brushy Canyon
5800.00	15.00	264.00	5681.86	-96.08	-914.14	44.10	0.00	
5900.00	15.00	264.00	5778.46	-98.79	-939.88	45.34	0.00	
6000.00	15.00	264.00	5875.05	-101.49	-965.62	46.58	0.00	
6100.00	15.00	264.00	5971.64	-104.20	-991.36	47.82	0.00	
6200.00	15.00	264.00	6068.23	-106.91	-1017.10	49.06	0.00	
6300.00	15.00	264.00	6164.83	-109.61	-1042.84	50.30	0.00	

Tater Tot 2-35 Fed Com 332H



**Well:** Tater Tot 2-35 Fed Com 332H  
**County:** Eddy  
**Wellbore:** Permit Plan  
**Design:** Permit Plan #1

**Geodetic System:** US State Plane 1983  
**Datum:** North American Datum 1927  
**Ellipsoid:** Clarke 1866  
**Zone:** 3001 - NM East (NAD83)

MD (ft)	INC (")	AZI (")	TVD (ft)	NS (ft)	EW (ft)	VS (ft)	DLS (°/100ft)	Comment
6400.00	15.00	264.00	6261.42	-112.32	-1068.58	51.55	0.00	
6500.00	15.00	264.00	6358.01	-115.02	-1094.32	52.79	0.00	
6600.00	15.00	264.00	6454.60	-117.73	-1120.06	54.03	0.00	
6700.00	15.00	264.00	6551.20	-120.43	-1145.80	55.27	0.00	
6800.00	15.00	264.00	6647.79	-123.14	-1171.54	56.51	0.00	
6900.00	15.00	264.00	6744.38	-125.84	-1197.28	57.75	0.00	
7000.00	15.00	264.00	6840.97	-128.55	-1223.02	59.00	0.00	
7051.79	15.00	264.00	6891.00	-129.95	-1236.36	59.64	0.00	1st Bone Spring Lime
7100.00	15.00	264.00	6937.57	-131.26	-1248.76	60.24	0.00	
7200.00	15.00	264.00	7034.16	-133.96	-1274.50	61.48	0.00	
7300.00	15.00	264.00	7130.75	-136.67	-1300.24	62.72	0.00	
7400.00	15.00	264.00	7227.34	-139.37	-1325.98	63.96	0.00	
7500.00	15.00	264.00	7323.94	-142.08	-1351.72	65.20	0.00	
7600.00	15.00	264.00	7420.53	-144.78	-1377.46	66.44	0.00	
7658.87	15.00	264.00	7477.40	-146.37	-1392.62	67.18	0.00	Drop to Vertical
7700.00	14.18	264.00	7517.20	-147.45	-1402.92	67.68	2.00	
7800.00	12.18	264.00	7614.56	-149.84	-1425.59	68.77	2.00	
7900.00	10.18	264.00	7712.66	-151.86	-1444.87	69.70	2.00	
8000.00	8.18	264.00	7811.37	-153.53	-1460.73	70.47	2.00	
8100.00	6.18	264.00	7910.58	-154.84	-1473.16	71.07	2.00	
8133.59	5.51	264.00	7944.00	-155.19	-1476.56	71.23	2.00	Bone Spring 1st
8200.00	4.18	264.00	8010.17	-155.78	-1482.13	71.50	2.00	
8300.00	2.18	264.00	8110.01	-156.36	-1487.64	71.76	2.00	
8400.00	0.18	264.00	8209.99	-156.57	-1489.69	71.86	2.00	
8408.87	0.00	264.00	8218.86	-156.57	-1489.70	71.86	2.00	Hold Vertical
8500.00	0.00	359.41	8309.99	-156.57	-1489.70	71.86	0.00	
8600.00	0.00	359.41	8409.99	-156.57	-1489.70	71.86	0.00	
8700.00	0.00	359.41	8509.99	-156.57	-1489.70	71.86	0.00	
8800.00	0.00	359.41	8609.99	-156.57	-1489.70	71.86	0.00	
8862.01	0.00	359.41	8672.00	-156.57	-1489.70	71.86	0.00	Bone Spring 2nd
8900.00	0.00	359.41	8709.99	-156.57	-1489.70	71.86	0.00	
9000.00	0.00	359.41	8809.99	-156.57	-1489.70	71.86	0.00	
9100.00	0.00	359.41	8909.99	-156.57	-1489.70	71.86	0.00	
9200.00	0.00	359.41	9009.99	-156.57	-1489.70	71.86	0.00	
9261.01	0.00	359.41	9071.00	-156.57	-1489.70	71.86	0.00	3rd Bone Spring Lime
9300.00	0.00	359.41	9109.99	-156.57	-1489.70	71.86	0.00	
9400.00	0.00	359.41	9209.99	-156.57	-1489.70	71.86	0.00	
9500.00	0.00	359.41	9309.99	-156.57	-1489.70	71.86	0.00	
9600.00	0.00	359.41	9409.99	-156.57	-1489.70	71.86	0.00	
9674.07	0.00	359.41	9484.05	-156.57	-1489.70	71.86	0.00	KOP
9700.00	2.59	359.41	9509.98	-155.99	-1489.71	72.45	10.00	
9800.00	12.59	359.41	9608.97	-142.79	-1489.84	85.51	10.00	
9900.00	22.59	359.41	9704.18	-112.60	-1490.15	115.39	10.00	
10000.00	32.59	359.41	9792.69	-66.35	-1490.63	161.18	10.00	
10096.17	42.21	359.41	9869.00	-8.00	-1491.23	218.94	10.00	Bone Spring 3rd / Point of Penetration
10100.00	42.59	359.41	9871.82	-5.42	-1491.26	221.49	10.00	
10200.00	52.59	359.41	9939.18	68.32	-1492.02	294.49	10.00	
10300.00	62.59	359.41	9992.70	152.63	-1492.89	377.96	10.00	
10400.00	72.59	359.41	10030.77	244.96	-1493.84	469.36	10.00	
10500.00	82.59	359.41	10052.23	342.50	-1494.84	565.91	10.00	
10577.34	90.33	359.41	10057.00	419.63	-1495.63	642.26	10.00	Landing Point
10600.00	90.33	359.41	10056.87	442.29	-1495.87	664.69	0.00	
10700.00	90.33	359.41	10056.30	542.28	-1496.90	763.68	0.00	
10800.00	90.33	359.41	10055.73	642.27	-1497.93	862.66	0.00	
10900.00	90.33	359.41	10055.15	742.27	-1498.96	961.65	0.00	
11000.00	90.33	359.41	10054.58	842.26	-1499.99	1060.64	0.00	
11100.00	90.33	359.41	10054.01	942.25	-1501.02	1159.62	0.00	
11200.00	90.33	359.41	10053.44	1042.24	-1502.05	1258.61	0.00	
11300.00	90.33	359.41	10052.87	1142.24	-1503.08	1357.60	0.00	
11400.00	90.33	359.41	10052.30	1242.23	-1504.11	1456.58	0.00	
11500.00	90.33	359.41	10051.72	1342.22	-1505.14	1555.57	0.00	
11600.00	90.33	359.41	10051.15	1442.22	-1506.17	1654.55	0.00	
11700.00	90.33	359.41	10050.58	1542.21	-1507.20	1753.54	0.00	
11800.00	90.33	359.41	10050.01	1642.20	-1508.23	1852.53	0.00	
11900.00	90.33	359.41	10049.44	1742.20	-1509.26	1951.51	0.00	
12000.00	90.33	359.41	10048.86	1842.19	-1510.29	2050.50	0.00	
12100.00	90.33	359.41	10048.29	1942.18	-1511.32	2149.48	0.00	
12200.00	90.33	359.41	10047.72	2042.18	-1512.35	2248.47	0.00	
12300.00	90.33	359.41	10047.15	2142.17	-1513.38	2347.46	0.00	
12400.00	90.33	359.41	10046.58	2242.16	-1514.41	2446.44	0.00	

Tater Tot 2-35 Fed Com 332H



Well: Tater Tot 2-35 Fed Com 332H

County: Eddy

Wellbore: Permit Plan

Design: Permit Plan #1

Geodetic System: US State Plane 1983

Datum: North American Datum 1927

Ellipsoid: Clarke 1866

Zone: 3001 - NM East (NAD83)

MD (ft)	INC (")	AZI (")	TVD (ft)	NS (ft)	EW (ft)	VS (ft)	DLS (°/100ft)	Comment
12500.00	90.33	359.41	10046.01	2342.15	-1515.44	2545.43	0.00	
12600.00	90.33	359.41	10045.43	2442.15	-1516.47	2644.41	0.00	
12700.00	90.33	359.41	10044.86	2542.14	-1517.50	2743.40	0.00	
12800.00	90.33	359.41	10044.29	2642.13	-1518.53	2842.39	0.00	
12900.00	90.33	359.41	10043.72	2742.13	-1519.56	2941.37	0.00	
13000.00	90.33	359.41	10043.15	2842.12	-1520.59	3040.36	0.00	
13100.00	90.33	359.41	10042.57	2942.11	-1521.62	3139.34	0.00	
13200.00	90.33	359.41	10042.00	3042.11	-1522.65	3238.33	0.00	
13300.00	90.33	359.41	10041.43	3142.10	-1523.68	3337.32	0.00	
13400.00	90.33	359.41	10040.86	3242.09	-1524.71	3436.30	0.00	
13500.00	90.33	359.41	10040.29	3342.08	-1525.74	3535.29	0.00	
13600.00	90.33	359.41	10039.71	3442.08	-1526.78	3634.27	0.00	
13700.00	90.33	359.41	10039.14	3542.07	-1527.81	3733.26	0.00	
13800.00	90.33	359.41	10038.57	3642.06	-1528.84	3832.25	0.00	
13900.00	90.33	359.41	10038.00	3742.06	-1529.87	3931.23	0.00	
14000.00	90.33	359.41	10037.43	3842.05	-1530.90	4030.22	0.00	
14100.00	90.33	359.41	10036.86	3942.04	-1531.93	4129.20	0.00	
14200.00	90.33	359.41	10036.28	4042.04	-1532.96	4228.19	0.00	
14300.00	90.33	359.41	10035.71	4142.03	-1533.99	4327.18	0.00	
14400.00	90.33	359.41	10035.14	4242.02	-1535.02	4426.16	0.00	
14500.00	90.33	359.41	10034.57	4342.02	-1536.05	4525.15	0.00	
14600.00	90.33	359.41	10034.00	4442.01	-1537.08	4624.13	0.00	
14700.00	90.33	359.41	10033.42	4542.00	-1538.11	4723.12	0.00	
14800.00	90.33	359.41	10032.85	4641.99	-1539.14	4822.11	0.00	
14900.00	90.33	359.41	10032.28	4741.99	-1540.17	4921.09	0.00	
15000.00	90.33	359.41	10031.71	4841.98	-1541.20	5020.08	0.00	
15100.00	90.33	359.41	10031.14	4941.97	-1542.23	5119.06	0.00	
15200.00	90.33	359.41	10030.57	5041.97	-1543.26	5218.05	0.00	
15300.00	90.33	359.41	10029.99	5141.96	-1544.29	5317.04	0.00	
15400.00	90.33	359.41	10029.42	5241.95	-1545.32	5416.02	0.00	
15500.00	90.33	359.41	10028.85	5341.95	-1546.35	5515.01	0.00	
15600.00	90.33	359.41	10028.28	5441.94	-1547.38	5613.99	0.00	
15700.00	90.33	359.41	10027.71	5541.93	-1548.41	5712.98	0.00	
15800.00	90.33	359.41	10027.13	5641.93	-1549.44	5811.97	0.00	
15900.00	90.33	359.41	10026.56	5741.92	-1550.47	5910.95	0.00	
16000.00	90.33	359.41	10025.99	5841.91	-1551.50	6009.94	0.00	
16100.00	90.33	359.41	10025.42	5941.90	-1552.53	6108.92	0.00	
16200.00	90.33	359.41	10024.85	6041.90	-1553.56	6207.91	0.00	
16300.00	90.33	359.41	10024.27	6141.89	-1554.59	6306.90	0.00	
16400.00	90.33	359.41	10023.70	6241.88	-1555.62	6405.88	0.00	
16500.00	90.33	359.41	10023.13	6341.88	-1556.65	6504.87	0.00	
16600.00	90.33	359.41	10022.56	6441.87	-1557.68	6603.86	0.00	
16700.00	90.33	359.41	10021.99	6541.86	-1558.71	6702.84	0.00	
16800.00	90.33	359.41	10021.42	6641.86	-1559.74	6801.83	0.00	
16900.00	90.33	359.41	10020.84	6741.85	-1560.77	6900.81	0.00	
17000.00	90.33	359.41	10020.27	6841.84	-1561.80	6999.80	0.00	
17100.00	90.33	359.41	10019.70	6941.84	-1562.83	7098.79	0.00	
17200.00	90.33	359.41	10019.13	7041.83	-1563.86	7197.77	0.00	
17300.00	90.33	359.41	10018.56	7141.82	-1564.89	7296.76	0.00	
17400.00	90.33	359.41	10017.98	7241.81	-1565.92	7395.74	0.00	
17500.00	90.33	359.41	10017.41	7341.81	-1566.95	7494.73	0.00	
17600.00	90.33	359.41	10016.84	7441.80	-1567.98	7593.72	0.00	
17700.00	90.33	359.41	10016.27	7541.79	-1569.01	7692.70	0.00	
17800.00	90.33	359.41	10015.70	7641.79	-1570.05	7791.69	0.00	
17900.00	90.33	359.41	10015.13	7741.78	-1571.08	7890.67	0.00	
18000.00	90.33	359.41	10014.55	7841.77	-1572.11	7989.66	0.00	
18100.00	90.33	359.41	10013.98	7941.77	-1573.14	8088.65	0.00	
18200.00	90.33	359.41	10013.41	8041.76	-1574.17	8187.63	0.00	
18300.00	90.33	359.41	10012.84	8141.75	-1575.20	8286.62	0.00	
18400.00	90.33	359.41	10012.27	8241.74	-1576.23	8385.60	0.00	
18500.00	90.33	359.41	10011.69	8341.74	-1577.26	8484.59	0.00	
18600.00	90.33	359.41	10011.12	8441.73	-1578.29	8583.58	0.00	
18700.00	90.33	359.41	10010.55	8541.72	-1579.32	8682.56	0.00	
18800.00	90.33	359.41	10009.98	8641.72	-1580.35	8781.55	0.00	
18900.00	90.33	359.41	10009.41	8741.71	-1581.38	8880.53	0.00	
19000.00	90.33	359.41	10008.83	8841.70	-1582.41	8979.52	0.00	
19100.00	90.33	359.41	10008.26	8941.70	-1583.44	9078.51	0.00	
19200.00	90.33	359.41	10007.69	9041.69	-1584.47	9177.49	0.00	
19300.00	90.33	359.41	10007.12	9141.68	-1585.50	9276.48	0.00	
19400.00	90.33	359.41	10006.55	9241.68	-1586.53	9375.46	0.00	



Tater Tot 2-35 Fed Com 332H



**Well:** Tater Tot 2-35 Fed Com 332H  
**County:** Eddy  
**Wellbore:** Permit Plan  
**Design:** Permit Plan #1

**Geodetic System:** US State Plane 1983  
**Datum:** North American Datum 1927  
**Ellipsoid:** Clarke 1866  
**Zone:** 3001 - NM East (NAD83)

MD	INC	AZI	TVD	NS	EW	VS	DLS	Comment
(ft)	(°)	(°)	(ft)	(ft)	(ft)	(ft)	(°/100ft)	
19500.00	90.33	359.41	10005.98	9341.67	-1587.56	9474.45	0.00	
19600.00	90.33	359.41	10005.40	9441.66	-1588.59	9573.44	0.00	
19700.00	90.33	359.41	10004.83	9541.65	-1589.62	9672.42	0.00	
19800.00	90.33	359.41	10004.26	9641.65	-1590.65	9771.41	0.00	
19900.00	90.33	359.41	10003.69	9741.64	-1591.68	9870.39	0.00	
20000.00	90.33	359.41	10003.12	9841.63	-1592.71	9969.38	0.00	
20100.00	90.33	359.41	10002.54	9941.63	-1593.74	10068.37	0.00	
20200.00	90.33	359.41	10001.97	10041.62	-1594.77	10167.35	0.00	
20300.00	90.33	359.41	10001.40	10141.61	-1595.80	10266.34	0.00	
20400.00	90.33	359.41	10000.83	10241.61	-1596.83	10365.32	0.00	
20462.59	90.33	359.41	10000.47	10304.19	-1597.48	10427.28	0.00	exit
20500.00	90.33	359.41	10000.26	10341.60	-1597.86	10464.31	0.00	
20542.59	90.33	359.41	10000.00	10384.18	-1598.25	10506.46	0.00	BHL



Tater Tot 2-35 Fed Com 332H

**1. Geologic Formations**

TVD of target	10000	Pilot hole depth	N/A
MD at TD:	20543	Deepest expected fresh water	

**Basin**

Formation	Depth (TVD) from KB	Water/Mineral Bearing/Target Zone?	Hazards*
Rustler	260		
Salt	570		
Base of Salt	2995		
Delaware	3198		
Cherry Canyon	4075		
Brushy Canyon	5663		
1st Bone Spring Lime	6891		
Bone Spring 1st	7944		
Bone Spring 2nd	8672		
3rd Bone Spring Lime	9071		
Bone Spring 3rd	9869		

\*H2S, water flows, loss of circulation, abnormal pressures, etc.

Tater Tot 2-35 Fed Com 332H

**2. Casing Program (Primary Design)**

Hole Size	Csg. Size	Wt (PPF)	Grade	Conn	Casing Interval		Casing Interval	
					From (MD)	To (MD)	From (TVD)	To (TVD)
14 3/4	10 3/4	45 1/2	J-55	BTC	0	285	0	285
9 7/8	8 5/8	32	P110	Sprint FJ	0	9572	0	9572
7 7/8	5 1/2	17	P110	DWC/C-IS+	0	20543	0	10000

• All casing strings will be tested in accordance with Onshore Oil and Gas Order #2 IILB.1.h Must have table for contingency casing.

**3. Cementing Program (Primary Design)**

Casing	# Sks	TOC	Wt. ppg	Yld (ft3/sack)	Slurry Description
Surface	189	Surf	13.2	1.44	Lead: Class C Cement + additives
Int 1	281	Surf	9	3.27	2nd State: Bradenhead Squeeze - Lead: Class C Cement + additives
	455	5663	13.2	1.44	Tail: Class H / C + additives
Production	35	9072	9	3.27	Lead: Class H / C + additives
	1438	9674	13.2	1.44	Tail: Class H / C + additives

Assuming no returns are established while drilling, Devon requests to pump a two stage cement job on the intermediate casing string with the first stage being pumped conventionally with the calculated top of cement at the Brushy Canyon and the second stage performed as a bradenhead squeeze with planned cement from the Brushy Canyon to surface. The final cement top will be verified by Echo-meter. Devon will include the Echo-meter verified fluid top and the volume of displacement fluid above the cement slurry in the annulus in all post-drill sundries on wells utilizing this cement program. Devon will report to the BLM the volume of fluid (limited to 1 bbls) used to flush intermediate casing valves following backside cementing procedures.

Casing String	% Excess
Surface	50%
Intermediate 1	30%
Intermediate 1 (Two Stage)	25%
Prod	10%

Tater Tot 2-35 Fed Com 332H

**4. Pressure Control Equipment (Three String Design)**

BOP installed and tested before drilling which hole?		Size?	Min. Required WP	Type	✓	Tested to:
Int 1	13-58"	5M	Annular		X	50% of rated working pressure
			Blind Ram		X	5M
			Pipe Ram			
			Double Ram		X	
			Other*			
Production	13-5/8"	5M	Annular (5M)		X	50% of rated working pressure
			Blind Ram		X	5M
			Pipe Ram			
			Double Ram		X	
			Other*			
			Annular (5M)			
			Blind Ram			
			Pipe Ram			
			Double Ram			
			Other*			
N	A variance is requested for the use of a diverter on the surface casing. See attached for schematic.					
Y	A variance is requested to run a 5 M annular on a 10M system					

Tater Tot 2-35 Fed Com 332H

**5. Mud Program (Three String Design)**

Section	Type	Weight (ppg)
Surface	FW Gel	8.5-9
Intermediate	DBE / Cut Brine	10-10.5
Production	OBM	8.5-9

Sufficient mud materials to maintain mud properties and meet minimum lost circulation and weight increase requirements will be kept on location at all times.

What will be used to monitor the loss or gain of fluid?	PVT/Pason/Visual Monitoring
---	-----------------------------

**6. Logging and Testing Procedures**

Logging, Coring and Testing	
X	Will run GR/CNL from TD to surface (horizontal well - vertical portion of hole). Stated logs run will be in the Completion Report and submitted to the BLM.
	No logs are planned based on well control or offset log information.
	Drill stem test? If yes, explain.
	Coring? If yes, explain.

Additional logs planned		Interval
	Resistivity	Int. shoe to KOP
	Density	Int. shoe to KOP
X	CBL	Production casing
X	Mud log	Intermediate shoe to TD
	PEX	

**7. Drilling Conditions**

Condition	Specify what type and where?
BH pressure at deepest TVD	4680
Abnormal temperature	No

Mitigation measure for abnormal conditions. Describe. Lost circulation material/sweeps/mud scavengers.

Hydrogen Sulfide (H<sub>2</sub>S) monitors will be installed prior to drilling out the surface shoe. If H<sub>2</sub>S is detected in concentrations greater than 100 ppm, the operator will comply with the provisions of Onshore Oil and Gas Order #6. If Hydrogen Sulfide is encountered measured values and formations will be provided to the BLM.

N	H <sub>2</sub> S is present
Y	H <sub>2</sub> S plan attached.

## Tater Tot 2-35 Fed Com 332H

**8. Other facets of operation**

Is this a walking operation? Potentially

- 1 If operator elects, drilling rig will batch drill the surface holes and run/cement surface casing; walking the rig to next wells on the pad.
- 2 The drilling rig will then batch drill the intermediate sections and run/cement intermediate casing; the wellbore will be isolated with a blind flange and pressure gauge installed for monitoring the well before walking to the next well.
- 3 The drilling rig will then batch drill the production hole sections on the wells with OBM, run/cement production casing, and install TA caps or tubing heads for completions.

NOTE: During batch operations the drilling rig will be moved from well to well however, it will not be removed from the pad until all wells have production casing run/cemented.

Will be pre-setting casing? Potentially

- 1 Spudder rig will move in and batch drill surface hole.
  - a. Rig will utilize fresh water based mud to drill surface hole to TD. Solids control will be handled entirely on a closed loop basis.,
- 2 After drilling the surface hole section, the spudder rig will run casing and cement following all of the applicable rules and regulations (OnShore Order 2, all COAs and NMOCD regulations).
- 3 The wellhead will be installed and tested once the surface casing is cut off and the WOC time has been reached.
- 4 A blind flange with the same pressure rating as the wellhead will be installed to seal the wellbore. Pressure will be monitored with a pressure gauge installed on the wellhead.
- 5 Spudder rig operations is expected to take 4-5 days per well on a multi-well pad.
- 6 The NMOCD will be contacted and notified 24 hours prior to commencing spudder rig operations.
- 7 Drilling operations will be performed with drilling rig. At that time an approved BOP stack will be nipped up and tested on the wellhead before drilling operations commence on each well.
  - a. The NMOCD will be contacted / notified 24 hours before the drilling rig moves back on to the pad with the pre-set surface casing.

**Attachments**

<u>X</u>	Directional Plan
<u>          </u>	Other, describe

2-24-29-O Sundry ID 2742379 Tater Tot 2-35 State Fed Com 332H.xlsm

## Tater Tot 2-35 State Fed Com 332H

10 3/4	surface csg in a		14 3/4	inch hole.		Design Factors			Surface			
Segment	#/ft	Grade		Coupling	Body	Collapse	Burst	Length	B@s	a-B	a-C	Weight
"A"	45.50		j 55	btc	55.16	15.69	0.69	285	28	1.15	29.63	12,968
"B"				btc				0				0
w/8.4#/g mud, 30min Sfc Csg Test psig: 1,500				Tail Cmt	does not	circ to sfc.	Totals:	285				12,968
Comparison of Proposed to Minimum Required Cement Volumes												
Hole	Annular	1 Stage	1 Stage	Min	1 Stage	Drilling	Calc	Req'd				Min Dist
Size	Volume	Cmt Sx	CuFt Cmt	Cu Ft	% Excess	Mud Wt	MASP	BOPE				Hole-Cplg
14 3/4	0.5563	189	272	159	72	9.00	3115	5M				1.50
Burst Frac Gradient(s) for Segment(s) A, B = , b All > 0.70, OK.												
Site plot (pipe racks 3 or 4) as per D.O.D. 4.1 not found.												

8 5/8		casing inside the		10 3/4		Design Factors				Int 1		
Segment	#/ft	Grade		Coupling	Joint	Collapse	Burst	Length	B@s	a-B	a-C	Weight
"A"	32.00		p 110	vam sprint fj	2.43	0.77	1.53	9,572	1	2.89	1.28	306,304
"B"								0				0
w/8.4#/g mud, 30min Sfc Csg Test psig: 828								Totals:	9,572			306,304
The cement volume(s) are intended to achieve a top of 0 ft from surface or a								285				overlap.
Hole Size	Annular Volume	1 Stage Cmt Sx	1 Stage CuFt Cmt	Min Cu Ft	1 Stage % Excess	Drilling Mud Wt	Calc MASP	Req'd BOPE				Min Dist Hole-Cplg
9 7/8	0.1261	455	655	1210	-46	10.50	2475	3M				0.61
r D V Tool(s):			5663				sum of sx	Σ CuFt				Σ%excess
t by stage % :			33	28			736	1574				30
Class 'C' tail cmt yld > 1.35												

Tail cmt		casing inside the		8 5/8		Design Factors				Prod 1		
5 1/2												
Segment	#/ft	Grade		Coupling	Joint	Collapse	Burst	Length	B@s	a-B	a-C	Weight
"A"	17.00		p 110	dwc/c is+	3.21	1.6	2.28	20,543	2	4.30	3.02	349,231
"B"								0				0
"C"								0				0
"D"				0				0				0
w/8.4#/g mud, 30min Sfc Csg Test psig: 2,200								Totals:	20,543			349,231
The cement volume(s) are intended to achieve a top of								9072	ft from surface or a	500		overlap.
Hole	Annular	1 Stage	1 Stage	Min	1 Stage	Drilling	Calc	Req'd				Min Dist
Size	Volume	Cmt Sx	CuFt Cmt	Cu Ft	% Excess	Mud Wt	MASP	BOPE				Hole-Cplg
7 7/8	0.1733	1473	2185	1989	10	9.00						0.91
Class 'C' tail cmt yld > 1.35												

#N/A											
0	5 1/2										
Design Factors											
Segment	#/ft	Grade	Coupling	#N/A	Collapse	Burst	Length	<Choose Casing>			Weight
"A"			0.00				0	B@s	a-B	a-C	0
"B"			0.00				0				0
w/8.4#/g mud, 30min Sfc Csg Test psig:							Totals:	0	0		
Cmt vol calc below includes this csg, TOC intended							#N/A	ft from surface or a	#N/A		overlap.
Hole Size	Annular Volume	1 Stage Cmt Sx	1 Stage CuFt Cmt	Min Cu Ft	1 Stage % Excess	Drilling Mud Wt	Calc MASP	Req'd BOPE			Min Dist Hole-Cplg
0		#N/A	#N/A	0	#N/A						
#N/A Capitan Reef est top XXXX.											

## PECOS DISTRICT DRILLING CONDITIONS OF APPROVAL

<b>OPERATOR'S NAME:</b>	<b>Tater Tot 2-35 State Fed Com 332H</b>
<b>LEASE NO.:</b>	<b>NMNM103604</b>
<b>LOCATION:</b>	Section 2, T.24 S., R.29 E., NMPM
<b>COUNTY:</b>	Eddy County, New Mexico

<b>WELL NAME &amp; NO.:</b>	<b>Tater Tot 2-35 Fed Com 332H</b>
<b>SURFACE HOLE FOOTAGE:</b>	200'/S & 2125'/E
<b>BOTTOM HOLE FOOTAGE:</b>	20'/N & 1690'/W
<b>ATS/API ID:</b>	<b>3001549054</b>
<b>APD ID:</b>	<b>10400073916</b>
<b>Sundry ID:</b>	<b>2742379</b>

COA

H2S	No		
Potash	Secretary		
Cave/Karst Potential	Medium		
Cave/Karst Potential	<input type="checkbox"/> Critical		
Variance	<input checked="" type="checkbox"/> None	<input checked="" type="checkbox"/> Flex Hose	<input checked="" type="checkbox"/> Other
Wellhead	Conventional and Multibowl		
Other	<input type="checkbox"/> 4 String	Capitan Reef None	<input type="checkbox"/> WIPP
Other	Pilot Hole None	<input type="checkbox"/> Open Annulus	
Cementing	Contingency Squeeze None	Echo-Meter Int 1	Primary Cement Squeeze None
Special Requirements	<input type="checkbox"/> Water Disposal/Injection	<input checked="" type="checkbox"/> COM	<input type="checkbox"/> Unit
Special Requirements	<input type="checkbox"/> Batch Sundry		
Special Requirements Variance	<input checked="" type="checkbox"/> Break Testing	<input type="checkbox"/> Offline Cementing	<input type="checkbox"/> Casing Clearance



## A. HYDROGEN SULFIDE

Hydrogen Sulfide (H<sub>2</sub>S) monitors shall be installed prior to drilling out the surface shoe. If H<sub>2</sub>S is detected in concentrations greater than 100 ppm, the Hydrogen Sulfide area shall meet **43 CFR part 3170 Subpart 3176**, which includes equipment and personnel/public protection items. If Hydrogen Sulfide is encountered, provide measured values and formations to the BLM.

## B. CASING

1. The **10-3/4 inch** surface casing shall be set at approximately **285 feet** (a minimum of **70 feet (Eddy County)** into the Rustler Anhydrite, above the salt, and below usable fresh water) and cemented to the surface. The surface hole shall be **14 3/4 inch** in diameter.
  - a. If cement does not circulate to the surface, the appropriate BLM office shall be notified and a temperature survey utilizing an electronic type temperature survey with surface log readout will be used or a cement bond log shall be run to verify the top of the cement. Temperature survey will be run a minimum of six hours after pumping cement and ideally between 8-10 hours after completing the cement job.
  - b. Wait on cement (WOC) time for a primary cement job will be a minimum of **24 hours in the Potash Area** or 500 pounds compressive strength, whichever is greater. (This is to include the lead cement)
  - c. Wait on cement (WOC) time for a remedial job will be a minimum of 4 hours after bringing cement to surface or 500 pounds compressive strength, whichever is greater.
  - d. If cement falls back, remedial cementing will be done prior to drilling out that string.

**Intermediate casing must be kept fluid filled to meet BLM minimum collapse requirement.**

2. The minimum required fill of cement behind the **8-5/8 inch** intermediate casing is:

### **Option 1 (Single Stage):**

- Cement to surface. If cement does not circulate see B.1.a, c-d above. **Wait on cement (WOC) time for a primary cement job is to include the lead cement slurry due to cave/karst or potash.**

### **Option 2:**

Operator has proposed to cement in two stages by conventionally cementing the first stage and performing a bradenhead squeeze on the second stage, contingent upon no returns to surface.

- a. First stage: Operator will cement with intent to reach the top of the **Brushy Canyon at 5663'** (455 sxs Class H/C+ additives).
- b. Second stage:
  - Operator will perform bradenhead squeeze and top-out. Cement to surface. If cement does not reach surface, the appropriate BLM office shall be notified. (Squeeze 281 sxs Class C)  
**Wait on cement (WOC) time for a primary cement job is to include the lead cement slurry due to cave/karst or potash.**

**Operator has proposed to pump down 10-3/4" X 8-5/8" annulus after primary cementing stage. Operator must run Echo-meter to verify Cement Slurry/Fluid top in the annulus Or operator shall run a CBL from TD of the 8-5/8" casing to surface after the second stage BH to verify TOC.**

**Submit results to the BLM. No displacement fluid/wash out shall be utilized at the top of the cement slurry between second stage BH and top out. Operator must run one CBL per Well Pad.**

**If cement does not reach surface, the next casing string must come to surface.**

**Operator must use a limited flush fluid volume of 1 bbl following backside cementing procedures.**

- ❖ In Medium Cave/Karst Areas if cement does not circulate to surface on the first two casing strings, the cement on the 3rd casing string must come to surface.
  - ❖ In Secretary Potash Areas if cement does not circulate to surface on the first two casing strings, the cement on the 3rd casing string must come to surface.
3. The minimum required fill of cement behind the 5-1/2 inch production casing is:
    - Cement should tie-back at least **500 feet** into previous casing string. Operator shall provide method of verification.  
**Wait on cement (WOC) time for a primary cement job is to include the lead cement slurry due to cave/karst or potash.**  
**Cement excess is less than 25%, more cement is required if washout occurs. Adjust cement volume and excess based on a fluid caliper or similar method that reflects the as-drilled size of the wellbore.**

## C. PRESSURE CONTROL

1. Variance approved to use flex line from BOP to choke manifold. Manufacturer's specification to be readily available. No external damage to flex line. Flex line to be installed as straight as possible (no hard bends).'
- 2.

### Option 1:

- a. Minimum working pressure of the blowout preventer (BOP) and related equipment (BOPE) required for drilling below the surface casing shoe shall be **5000 (5M) psi. Annular which shall be tested to 3500 (70% Working Pressure) psi.**
- b. Minimum working pressure of the blowout preventer (BOP) and related equipment (BOPE) required for drilling below the **8-5/8** inch intermediate casing shoe shall be **5000 (5M) psi.**

### Option 2:

Operator has proposed a multi-bowl wellhead assembly. This assembly will only be tested when installed on the **10-3/4** inch surface casing. Minimum working pressure of the blowout preventer (BOP) and related equipment (BOPE) required for drilling below the surface casing shoe shall be **5000 (5M) psi.**

- a. Wellhead shall be installed by manufacturer's representatives, submit documentation with subsequent sundry.
- b. If the welding is performed by a third party, the manufacturer's representative shall monitor the temperature to verify that it does not exceed the maximum temperature of the seal.
- c. Manufacturer representative shall install the test plug for the initial BOP test.
- d. If the cement does not circulate and one inch operations would have been possible with a standard wellhead, the well head shall be cut off, cementing operations performed and another wellhead installed.
- e. Whenever any seal subject to test pressure is broken, all the tests in OOGO2.III.A.2.i must be followed.

## D. SPECIAL REQUIREMENT (S)

### Communitization Agreement

- The operator will submit a Communitization Agreement to the Santa Fe Office, 301 Dinosaur Trail Santa Fe, New Mexico 87508, at least 90 days before the anticipated date of first production from a well subject to a spacing order issued by the New Mexico Oil Conservation Division. The Communitization Agreement will include the signatures of all working interest owners in all Federal and Indian leases subject to

the Communitization Agreement (i.e., operating rights owners and lessees of record), or certification that the operator has obtained the written signatures of all such owners and will make those signatures available to the BLM immediately upon request.

- The operator will submit an as-drilled survey well plat of the well completion, but are not limited to, those specified in **43 CFR part 3170 Subpart 3171**
- If the operator does not comply with this condition of approval, the BLM may take enforcement actions that include, but are not limited to, those specified in 43 CFR 3163.1.
- In addition, the well sign shall include the surface and bottom hole lease numbers. When the Communitization Agreement number is known, it shall also be on the sign.

#### **BOPE Break Testing Variance (Approved)**

- BOPE Break Testing is ONLY permitted for 5M BOPE or less. (**Annular preventer must be tested to a minimum of 70% of BOPE working pressure and shall be higher than the MASP**)
- BOPE Break Testing is NOT permitted to drilling the production hole section.
- Variance only pertains to the intermediate hole-sections and no deeper than the Bone Springs formation.
- While in transfer between wells, the BOPE shall be secured by the hydraulic carrier or cradle.
- Any well control event while drilling require notification to the BLM Petroleum Engineer (**575-706-2779**) prior to the commencement of any BOPE Break Testing operations.
- A full BOPE test is required prior to drilling the first deep intermediate hole section. If any subsequent hole interval is deeper than the first, a full BOPE test will be required. (200' TVD tolerance between intermediate shoes is allowable).
- The BLM is to be contacted (**575-689-5981 Lea County**) 4 hours prior to BOPE tests.
- As a minimum, a full BOPE test shall be performed at **21-day** intervals.
- In the event any repairs or replacement of the BOPE is required, the BOPE shall test as per Onshore Oil and Gas Order No. 2.
- If in the event break testing is not utilized, then a full BOPE test would be conducted.

## GENERAL REQUIREMENTS

The BLM is to be notified in advance for a representative to witness:

- a. Spudding well (minimum of 24 hours)
- b. Setting and/or Cementing of all casing strings (minimum of 4 hours)
- c. BOPE tests (minimum of 4 hours)

☒ Eddy County

**EMAIL** or call the Carlsbad Field Office, 620 East Greene St., Carlsbad, NM 88220,

[BLM\\_NM\\_CFO\\_DrillingNotifications@BLM.GOV](mailto:BLM_NM_CFO_DrillingNotifications@BLM.GOV)

(575) 361-2822

☒ Lea County

Call the Hobbs Field Station, 414 West Taylor, Hobbs NM 88240,

(575) 689-5981

1. Unless the production casing has been run and cemented or the well has been properly plugged, the drilling rig shall not be removed from over the hole without prior approval.
  - a. In the event the operator has proposed to drill multiple wells utilizing a skid/walking rig. Operator shall secure the wellbore on the current well, after installing and testing the wellhead, by installing a blind flange of like pressure rating to the wellhead and a pressure gauge that can be monitored while drilling is performed on the other well(s).
  - b. When the operator proposes to set surface casing with Spudder Rig
    - Notify the BLM when moving in and removing the Spudder Rig.
    - Notify the BLM when moving in the 2<sup>nd</sup> Rig. Rig to be moved in within 90 days of notification that Spudder Rig has left the location.
    - BOP/BOPE test to be conducted per **43 CFR part 3170 Subpart 3172** as soon as 2nd Rig is rigged up on well.
2. Floor controls are required for 3M or Greater systems. These controls will be on the rig floor, unobstructed, readily accessible to the driller and will be operational at all times during drilling and/or completion activities. Rig floor is defined as the area immediately around the rotary table; the area immediately above the substructure on which the draw works are located, this does not include the dog house or stairway area.
3. The record of the drilling rate along with the GR/N well log run from TD to surface (horizontal well – vertical portion of hole) shall be submitted to the BLM office as well as all other logs run on the borehole 30 days from completion. If available, a

digital copy of the logs is to be submitted in addition to the paper copies. The Rustler top and top and bottom of Salt are to be recorded on the Completion Report.

A. CASING

1. Changes to the approved APD casing program need prior approval if the items substituted are of lesser grade or different casing size or are Non-API. The Operator can exchange the components of the proposal with that of superior strength (i.e. changing from J-55 to N-80, or from 36# to 40#). Changes to the approved cement program need prior approval if the altered cement plan has less volume or strength or if the changes are substantial (i.e. Multistage tool, ECP, etc.). The initial wellhead installed on the well will remain on the well with spools used as needed.
2. Wait on cement (WOC) for Potash Areas: After cementing but before commencing any tests, the casing string shall stand cemented under pressure until both of the following conditions have been met: 1) cement reaches a minimum compressive strength of 500 psi for all cement blends, 2) until cement has been in place at least 24 hours. WOC time will be recorded in the driller's log. The casing integrity test can be done (prior to the cement setting up) immediately after bumping the plug.
3. Wait on cement (WOC) for Water Basin: After cementing but before commencing any tests, the casing string shall stand cemented under pressure until both of the following conditions have been met: 1) cement reaches a minimum compressive strength of 500 psi at the shoe, 2) until cement has been in place at least 8 hours. WOC time will be recorded in the driller's log. See individual casing strings for details regarding lead cement slurry requirements. The casing integrity test can be done (prior to the cement setting up) immediately after bumping the plug.
4. Provide compressive strengths including hours to reach required 500 pounds compressive strength prior to cementing each casing string. Have well specific cement details onsite prior to pumping the cement for each casing string.
5. No pea gravel permitted for remedial or fall back remedial without prior authorization from the BLM engineer.
6. On that portion of any well approved for a 5M BOPE system or greater, a pressure integrity test of each casing shoe shall be performed. Formation at the shoe shall be tested to a minimum of the mud weight equivalent anticipated to control the formation pressure to the next casing depth or at total depth of the well. This test shall be performed before drilling more than 20 feet of new hole.
7. If hardband drill pipe is rotated inside casing, returns will be monitored for metal. If metal is found in samples, drill pipe will be pulled and rubber protectors which have a larger diameter than the tool joints of the drill pipe will be installed prior to continuing drilling operations.

8. Whenever a casing string is cemented in the R-111-P potash area, the NMOCD requirements shall be followed.

B. PRESSURE CONTROL

1. All blowout preventer (BOP) and related equipment (BOPE) shall comply with well control requirements as described in **43 CFR part 3170 Subpart 3172** and **API STD 53 Sec. 5.3**.
2. If a variance is approved for a flexible hose to be installed from the BOP to the choke manifold, the following requirements apply: The flex line must meet the requirements of API 16C. Check condition of flexible line from BOP to choke manifold, replace if exterior is damaged or if line fails test. Line to be as straight as possible with no hard bends and is to be anchored according to Manufacturer's requirements. The flexible hose can be exchanged with a hose of equal size and equal or greater pressure rating. Anchor requirements, specification sheet and hydrostatic pressure test certification matching the hose in service, to be onsite for review. These documents shall be posted in the company man's trailer and on the rig floor.
3. 5M or higher system requires an HCR valve, remote kill line and annular to match. The remote kill line is to be installed prior to testing the system and tested to stack pressure.
4. If the operator has proposed a multi-bowl wellhead assembly in the APD. The following requirements must be met:
  - a. Wellhead shall be installed by manufacturer's representatives, submit documentation with subsequent sundry.
  - b. If the welding is performed by a third party, the manufacturer's representative shall monitor the temperature to verify that it does not exceed the maximum temperature of the seal.
  - c. Manufacturer representative shall install the test plug for the initial BOP test.
  - d. Whenever any seal subject to test pressure is broken, all the tests in OOGO2.III.A.2.i must be followed.
  - e. If the cement does not circulate and one inch operations would have been possible with a standard wellhead, the well head shall be cut off, cementing operations performed and another wellhead installed.
5. The appropriate BLM office shall be notified a minimum of 4 hours in advance for a representative to witness the tests.
  - a. In a water basin, for all casing strings utilizing slips, these are to be set as soon as the crew and rig are ready and any fallback cement remediation has been done. The casing cut-off and BOP installation can be initiated four hours after



installing the slips, which will be approximately six hours after bumping the plug. For those casing strings not using slips, the minimum wait time before cut-off is eight hours after bumping the plug. BOP/BOPE testing can begin after cut-off or once cement reaches 500 psi compressive strength (including lead cement), whichever is greater. However, if the float does not hold, cut-off cannot be initiated until cement reaches 500 psi compressive strength (including lead when specified).

- b. In potash areas, for all casing strings utilizing slips, these are to be set as soon as the crew and rig are ready and any fallback cement remediation has been done. For all casing strings, casing cut-off and BOP installation can be initiated at twelve hours after bumping the cement plug. The BOPE test can be initiated after bumping the cement plug with the casing valve open. (only applies to single stage cement jobs, prior to the cement setting up.)
- c. The tests shall be done by an independent service company utilizing a test plug not a cup or J-packer and can be initiated immediately with the casing valve open. The operator also has the option of utilizing an independent tester to test without a plug (i.e. against the casing) pursuant to **43 CFR part 3170 Subpart 3172** with the pressure not to exceed 70% of the burst rating for the casing. Any test against the casing must meet the WOC time for water basin (8 hours) or potash (24 hours) or 500 pounds compressive strength, whichever is greater, prior to initiating the test (see casing segment as lead cement may be critical item).
- d. The test shall be run on a 5000 psi chart for a 2-3M BOP/BOP, on a 10000 psi chart for a 5M BOP/BOPE and on a 15000 psi chart for a 10M BOP/BOPE. If a linear chart is used, it shall be a one hour chart. A circular chart shall have a maximum 2 hour clock. If a twelve hour or twenty-four hour chart is used, tester shall make a notation that it is run with a two hour clock.
- e. The results of the test shall be reported to the appropriate BLM office.
- f. All tests are required to be recorded on a calibrated test chart. A copy of the BOP/BOPE test chart and a copy of independent service company test will be submitted to the appropriate BLM office.
- g. The BOP/BOPE test shall include a low pressure test from 250 to 300 psi. The test will be held for a minimum of 10 minutes if test is done with a test plug and 30 minutes without a test plug. This test shall be performed prior to the test at full stack pressure.
- h. BOP/BOPE must be tested by an independent service company within 500 feet of the top of the Wolfcamp formation if the time between the setting of the intermediate casing and reaching this depth exceeds 20 days. This test does not exclude the test prior to drilling out the casing shoe as per **43 CFR**

**part 3170 Subpart 3172.**

**C. DRILLING MUD**

Mud system monitoring equipment, with derrick floor indicators and visual and audio alarms, shall be operating before drilling into the Wolfcamp formation, and shall be used until production casing is run and cemented.

**D. WASTE MATERIAL AND FLUIDS**

All waste (i.e. drilling fluids, trash, salts, chemicals, sewage, gray water, etc.) created as a result of drilling operations and completion operations shall be safely contained and disposed of properly at a waste disposal facility. No waste material or fluid shall be disposed of on the well location or surrounding area.

Porto-johns and trash containers will be on-location during fracturing operations or any other crew-intensive operations.

LVO 8/22/2023

**District I**  
1625 N. French Dr., Hobbs, NM 88240  
Phone:(575) 393-6161 Fax:(575) 393-0720  
**District II**  
811 S. First St., Artesia, NM 88210  
Phone:(575) 748-1283 Fax:(575) 748-9720  
**District III**  
1000 Rio Brazos Rd., Aztec, NM 87410  
Phone:(505) 334-6178 Fax:(505) 334-6170  
**District IV**  
1220 S. St Francis Dr., Santa Fe, NM 87505  
Phone:(505) 476-3470 Fax:(505) 476-3462

**State of New Mexico**  
**Energy, Minerals and Natural Resources**  
**Oil Conservation Division**  
**1220 S. St Francis Dr.**  
**Santa Fe, NM 87505**

CONDITIONS  
  
Action 275708

CONDITIONS

Operator: DEVON ENERGY PRODUCTION COMPANY, LP 333 West Sheridan Ave. Oklahoma City, OK 73102	OGRID: 6137
	Action Number: 275708
	Action Type: [C-103] NOI Change of Plans (C-103A)

CONDITIONS

Created By	Condition	Condition Date
ward.rikala	If a bradenhead squeeze is used during the cementing of the casing, then a CBL is required to verify the integrity of the cement behind the casing. All other COA's still apply.	10/18/2023