



Orphan Well Pre Plugging Methane Quantification Report

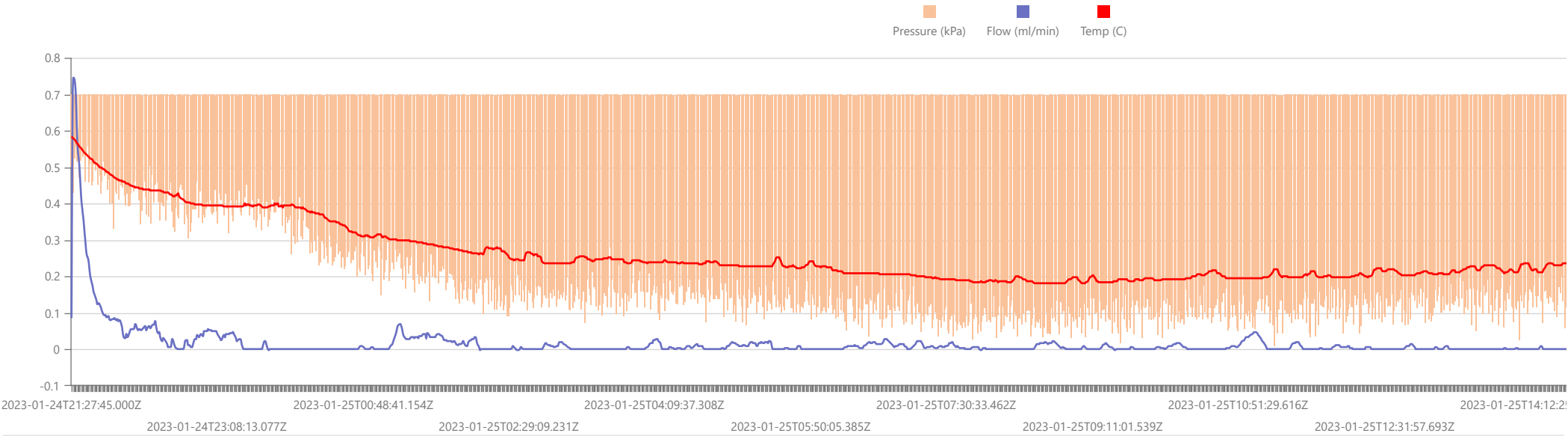
Start Date: Tue Jan 24 2023 21:27:45 GMT+0000 (Coordinated Universal Time) End Date: Wed Jan 25 2023 19:11:08 GMT+0000 (Coordinated Universal Time) Device: VB100-0029 Well Licensee: 30-005-27973 Well Name: Cato San Andres Unit 516 UWI: 30-005-27973 Well License Number: 30-005-27973 Surface Location: State of NM Bottom Hole Location: Unknown	Test Operator: Sean O. Jacobson Authorized By: State of NM Test Reason: IJJA Pre Plugging Scope Of Work: 12 Hour AFE Number: 52100-00000073108 GPS: 33.63806,-103.85864 Notes: GTG Prepared By: Curtis Shuck, QMS
--	--

Flow / Pressure Test

Flow Duration 21 hrs 42 minutes Duration	Average Flowrate 0.0155 m3/d	Average Pressure -4.9883 kPag	Average Flow Temperature -1.5355 °C	Average CH4 Mass 0.05 g/hr CH4 Concentration 106,720 ppm
--	------------------------------------	-------------------------------------	---	---

Methane Calculation: 717 grams CH4 per cubic meter (717 g/m³ x 0.0155 m³/day = 11.11 g/day total /24 = 0.46 g/hour x 0.10672 (methane concentration) = **0.05 g/hour CH4**). **Methane, gas** weighs 0.000717 *gram per cubic centimeter* or 0.717 *kilgram per cubic meter*, i.e. density of *methane, gas* is equal to 0.717 kg/m³; at 0°C (32°F or 273.15K) at standard atmospheric pressure. In imperial or US customary measurement system, the density is equal to 0.0448 *pound per cubic foot* [lb/ft³], or 0.0004144 *ounce per cubic inch* [oz/inch³].

Flow / Pressure / Temperature Timeseries



#	Date	Note
1	2023-01-25	Arrived 12:10pm January 25th, 2023. Rigged down flow test and secured location.
2	2023-01-24	Arrived 2:05pm January 24th, 2023. Performed field gas analysis and collected gas sample. Rigged up ventbuster #29 for flow testing.

Weather in Roswell, January 24

Weather Forecast for January 24 in Roswell, New Mexico - temperature, wind, atmospheric pressure, humidity and precipitations. Detailed hourly weather chart.

January 22	January 23	Select date: 📅	January 25	January 26
------------	------------	----------------	------------	------------

January 24, 2023

	Atmospheric conditions and temperature °F	RealFeel °F	Atmospheric pressure inHg	Wind speed mph	Humidity
Night	☁️ +34° ❄️❄️❄️	+27°	26.3	↗️ NE 8.5	81%
Morning	☁️ +28° ❄️❄️	+21°	26.3	▼ N 7.6	87%
Day	☀️ +41°	+39°	26.3	► W 5.1	50%
Evening	☁️ +36°	+30°	26.3	↖️ NW 6.5	53%

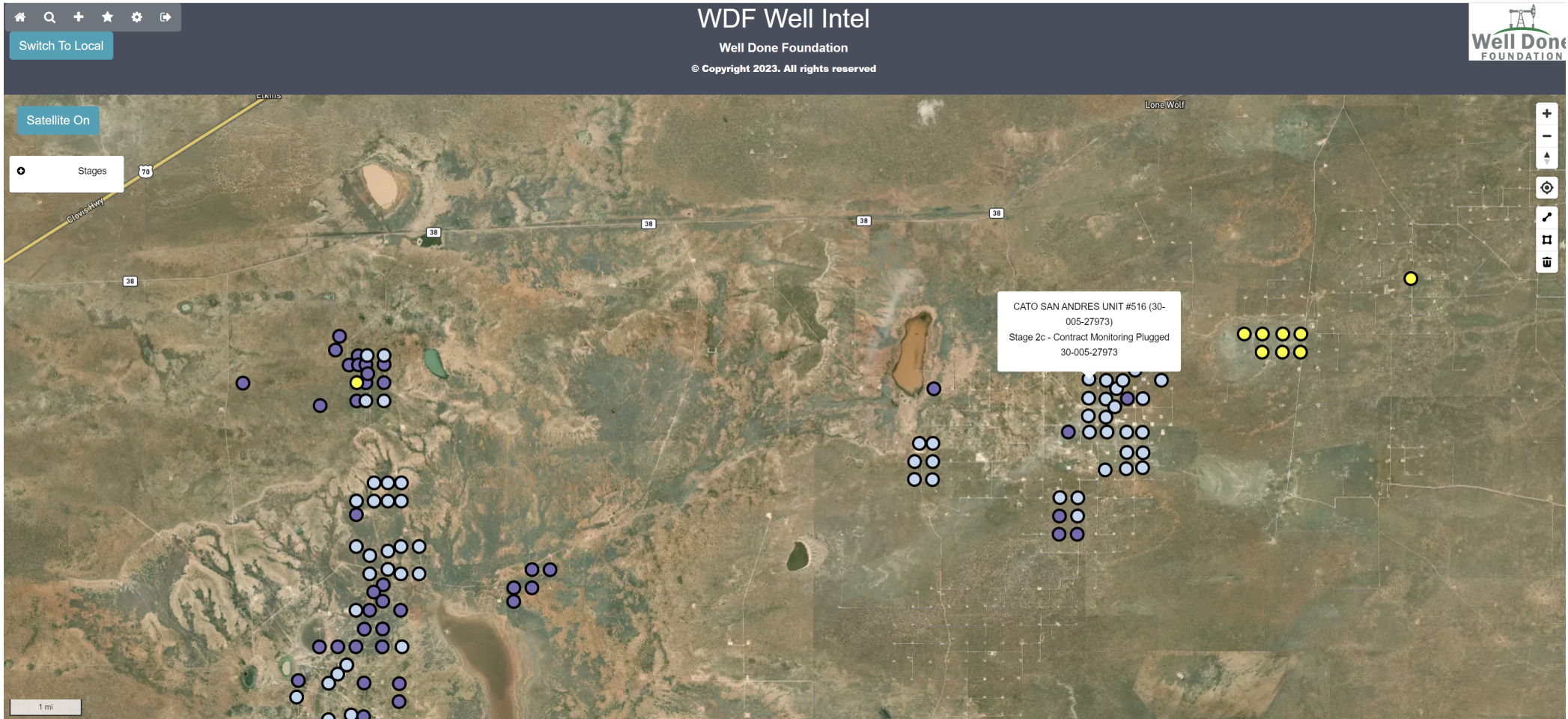
Weather in Roswell, January 25

Weather Forecast for January 25 in Roswell, New Mexico - temperature, wind, atmospheric pressure, humidity and precipitations. Detailed hourly weather chart.

January 23	January 24	Select date: 📅	January 26	January 27
------------	------------	----------------	------------	------------

January 25, 2023

	Atmospheric conditions and temperature °F	RealFeel °F	Atmospheric pressure inHg	Wind speed mph	Humidity
Night	🌑 +32°	+27°	26.4	↖️ NW 4.7	68%
Morning	☀️ +30°	+25°	26.5	▼ N 4	65%
Day	☀️ +43°	+36°	26.5	↖️ NW 12.8	22%
Evening	🌑 +36°	+30°	26.5	↗️ NE 4.9	53%





www.permianls.com
575.397.3713 2609 W Marland Hobbs NM 88240

C6+ Gas Analysis Report

15885G	CSAU #516 Pre Plug	CSA #516	
Sample Point Code	Sample Point Name	Sample Point Location	
Laboratory Services	2023063324	Tedlar Bag	SOJ - Spot
Source Laboratory	Lab File No	Container Identity	Sampler
USA	USA	USA	New Mexico
District	Area Name	Field Name	Facility Name
Jan 25, 2023 12:17	Jan 25, 2023 12:17	Jan 27, 2023 10:45	Jan 30, 2023
Date Sampled	Date Effective	Date Received	Date Reported
Torrance			
Ambient Temp (°F)	Flow Rate (Mcf)	Analyst	Press PSI @ Temp °F Source Conditions
Well Done Foundation		NG	
Operator		Lab Source Description	

Component	Normalized Mol %	Un-Normalized Mol %	GPM
H2S (H2S)	0.0000	0	
Nitrogen (N2)	75.2610	75.26069	
CO2 (CO2)	4.3290	4.32893	
Methane (C1)	10.6720	10.67226	
Ethane (C2)	3.2490	3.24938	0.8690
Propane (C3)	3.6030	3.60282	0.9920
I-Butane (IC4)	0.5640	0.5644	0.1850
N-Butane (NC4)	1.6330	1.63325	0.5150
I-Pentane (IC5)	0.1470	0.14664	0.0540
N-Pentane (NC5)	0.0640	0.06407	0.0230
Hexanes Plus (C6+)	0.4780	0.47756	0.2070
TOTAL	100.0000	100.0000	2.8450

Method(s): Gas C6+ - GPA 2261, Extended Gas - GPA 2286, Calculations - GPA 2172

Analyzer Information			
Device Type:	Gas Chromatograph	Device Make:	Shimadzu
Device Model:	GC-2014	Last Cal Date:	Jan 23, 2023

Source	Date	Notes
Brooke Rush	Jan 31, 2023 9:25 pm	Methane = 106,720 PPM

Gross Heating Values (Real, BTU/ft³)			
14.696 PSI @ 60.00 Å°F		14.73 PSI @ 60.00 Å°F	
Dry	Saturated	Dry	Saturated
361.8	356.5	362.6	357.3

Calculated Total Sample Properties	
GPA2145-16 *Calculated at Contract Conditions	
Relative Density Real	Relative Density Ideal
1.0070	1.0062
Molecular Weight	
29.1407	

C6+ Group Properties		
Assumed Composition		
C6 - 60.000%	C7 - 30.000%	C8 - 10.000%

Field H2S
0 PPM

PROTREND STATUS: Passed By Validator on Jan 31, 2023
DATA SOURCE: Imported

PASSED BY VALIDATOR REASON:
First sample taken @ this point, composition looks reasonable

VALIDATOR:
Brooke Rush

VALIDATOR COMMENTS:
OK

District I
1625 N. French Dr., Hobbs, NM 88240
Phone:(575) 393-6161 Fax:(575) 393-0720
District II
811 S. First St., Artesia, NM 88210
Phone:(575) 748-1283 Fax:(575) 748-9720
District III
1000 Rio Brazos Rd., Aztec, NM 87410
Phone:(505) 334-6178 Fax:(505) 334-6170
District IV
1220 S. St Francis Dr., Santa Fe, NM 87505
Phone:(505) 476-3470 Fax:(505) 476-3462

State of New Mexico
Energy, Minerals and Natural Resources
Oil Conservation Division
1220 S. St Francis Dr.
Santa Fe, NM 87505

DEFINITIONS

Action 278213

DEFINITIONS

Operator: CANO PETRO OF NEW MEXICO, INC. 801 Cherry Street Fort Worth, TX 76102	OGRID: 248802
	Action Number: 278213
	Action Type: [UF-OMA] Pre-Plug Methane Monitoring (UF-OMA-MMA)

DEFINITIONS

The Orphan Well Mitigation Activity (OMA) forms are a subset of the OCD's forms exclusively designed for activities related to State of New Mexico's contracted plugging and reclamation activities. Specifically, these forms are used for orphan wells or associated facilities which are in a "Reclamation Fund Approved" status. This status represents wells or facilities where the OCD has acquired a hearing order allowing the OCD to perform plugging or reclamation on wells and associated facilities that no longer have a viable operator to perform the necessary work. These forms are not to be utilized for any other purpose.

District I

1625 N. French Dr., Hobbs, NM 88240
 Phone:(575) 393-6161 Fax:(575) 393-0720

District II

811 S. First St., Artesia, NM 88210
 Phone:(575) 748-1283 Fax:(575) 748-9720

District III

1000 Rio Brazos Rd., Aztec, NM 87410
 Phone:(505) 334-6178 Fax:(505) 334-6170

District IV

1220 S. St Francis Dr., Santa Fe, NM 87505
 Phone:(505) 476-3470 Fax:(505) 476-3462

State of New Mexico
Energy, Minerals and Natural Resources
Oil Conservation Division
1220 S. St Francis Dr.
Santa Fe, NM 87505

QUESTIONS

Action 278213

QUESTIONS

Operator: CANO PETRO OF NEW MEXICO, INC. 801 Cherry Street Fort Worth, TX 76102	OGRID: 248802
	Action Number: 278213
	Action Type: [UF-OMA] Pre-Plug Methane Monitoring (UF-OMA-MMA)

QUESTIONS

Prerequisites	
[OGRID] Well Operator	[248802] CANO PETRO OF NEW MEXICO, INC.
[API] Well Name and Number	[30-005-27973] CATO SAN ANDRES UNIT #516
Well Status	Reclamation Fund Approved

Monitoring Event Information

Please answer all the questions in this group.

Reason For Filing	Pre-Plug Methane Monitoring
Date of monitoring	01/24/2023
Latitude	33.63806
Longitude	-103.85864

Monitoring Event Details

Please answer all the questions in this group.

Flow rate in cubic meters per day (m³/day)	0.02
Test duration in hours (hr)	21.6
Average flow temperature in degrees Celsius (°C)	-1.5
Average gauge flow pressure in kilopascals (kPag)	-4.9
Methane concentration in part per million (ppm)	106,720
Methane emission rate in grams per hour (g/hr)	0.05
Testing Method	Steady State

Monitoring Contractor

Please answer all the questions in this group.

Name of monitoring contractor	Well Done New Mexico LLC
-------------------------------	--------------------------