

Well Name: SKIP HIXON	Well Location: T26N / R3W / SEC 27 / NWSE / 36.455148 / -107.1298841	County or Parish/State: RIO ARRIBA / NM
Well Number: 1	Type of Well: OIL WELL	Allottee or Tribe Name: JICARILLA APACHE
Lease Number: JIC117	Unit or CA Name:	Unit or CA Number:
US Well Number: 3003924172	Well Status: Abandoned	Operator: DJR OPERATING LLC

Subsequent Report

Sundry ID: 2754583

Type of Submission: Subsequent Report	Type of Action: Plug and Abandonment
Date Sundry Submitted: 10/03/2023	Time Sundry Submitted: 10:24
Date Operation Actually Began: 09/18/2023	

Actual Procedure: The subject well was Plugged & Abandoned on 09/18/2023 per the attached End of Well Report, As Plugged Wellbore Diagram, and Marker.

SR Attachments

Actual Procedure

EOWR_BLM_Submittal_20231003102416.pdf

Well Name: SKIP HIXON	Well Location: T26N / R3W / SEC 27 / NWSE / 36.455148 / -107.1298841	County or Parish/State: RIO ARRIBA / NM
Well Number: 1	Type of Well: OIL WELL	Allottee or Tribe Name: JICARILLA APACHE
Lease Number: JIC117	Unit or CA Name:	Unit or CA Number:
US Well Number: 3003924172	Well Status: Abandoned	Operator: DJR OPERATING LLC

Operator

I certify that the foregoing is true and correct. Title 18 U.S.C. Section 1001 and Title 43 U.S.C. Section 1212, make it a crime for any person knowingly and willfully to make to any department or agency of the United States any false, fictitious or fraudulent statements or representations as to any matter within its jurisdiction. Electronic submission of Sundry Notices through this system satisfies regulations requiring a

Operator Electronic Signature: SHAW-MARIE FORD

Signed on: OCT 03, 2023 10:24 AM

Name: DJR OPERATING LLC

Title: Regulatory Specialist

Street Address: 1 ROAD 3263

City: AZTECState: NM

Phone: (505) 632-3476

Email address: SFORD@DJRLLC.COM

Field

Representative Name:

Street Address:

City:State:Zip:

Phone:

Email address:

BLM Point of Contact

BLM POC Name: MATTHEW H KADE

BLM POC Title: Petroleum Engineer

BLM POC Phone: 5055647736

BLM POC Email Address: MKADE@BLM.GOV

Disposition: Accepted

Disposition Date: 10/04/2023

Signature: Matthew Kade

DJR Operating, LLC
P&A End of Well Report
Skip Hixon 1
API # 30-039-24172
NW/SE, Unit J. Sec 27, T26N, R3W
Rio Arriba County, NM
Spud Date: 12-9-1987
Plug Date: 9-18-2023

9-1-2023:

MIRU rig and equipment. SITP = 470, SICP = 470, BH = 0. Blow down well. ND WH, NU BOP. TOO H with 121 jts 2 3/8" production string. SDFWE.

9-5 to 7-2023:

SITP = N/A, SICP = 450, BH = 0. MU bit, 4 – drill collars and TIH, tagged fill at 4081', clean out with air/foam, tagged cement plug at 4177'. (Cement plug was left from a plug back and squeeze operation from 2001). Drill out cement plug from 4177 to 4428'. TIH, tagged PBTD at 6997'. TOO H.

9-8-2023:

SITP = N/A, SICP = 250, BH = 0. Load hole to 2550'.

RIH, run CBL from 6736' to 2550' (top of fluid). TOC Stage 1 at DV tool at 6258', TOC Stage 2 at 4960', TOC from 2001 squeeze at 3790'. POOH.

TIH with workstring to 6335'. Load and roll hole. (Pictured Cliffs perforations will take some fluid, but can support a column of fluid for a short time.)

P&A Plug 1: Mancos formation top: Mix and spot a balanced plug of 20 sx from 6335'. WOC.

9-14-2023:

Tagged Plug 1 TOC at 6193'. Pull up to 5717'.

P&A Plug 2: Mesa Verde formation top: Mix and spot a balanced plug of 20 sx from 5717'.

WOC. Tagged Plug 2 at 5501'. TOO H.

9-15-2023:

RIH, perforate holes at 4922'. (Obtained BLM and NMOCD approval to perforate at formation top, due to TOC). POOH.

TIH with 5 1/2" cement retainer, set retainer at 4883'. Establish injection into perforations. Load and roll hole.

P&A Plug 3: Chacra formation top: Mix and pump a plug of 59 sx, (36 sx outside casing, 5 sx under retainer, sting out and spot a balanced plug of 18 sx above retainer).

TOOH, WOC. TIH, tagged Plug 3 at 4450'. Tagged a possible cement bridge caused as tubing was tripped out.

9-16-2023:

TIH with cement retainer, set retainer at 3968'. Establish injection into Pictured Cliffs perforations, sting out, load and roll hole.

P&A Plug 4: Pictured Cliffs perforations, Pictured Cliffs, Fruitland, and Kirtland formation tops: Mix and pump plug of 45 sx, (12 sx under retainer and into Pictured Cliffs perforations, sting out and place a balanced plug of 33 sx above retainer. Pull up to 3682', reverse out. TOO H. WOC.

RIH, run CBL from 2600' to surface, tie into previous CBL run on 9-8-2023.

TIH, tagged Plug 4 at 3682'. TOO H.

RIH, perforate holes at 3608'. POOH. Establish injection into perforations.

TIH, set cement retainer at 3556'.

P&A Plug 5: Ojo Alamo formation top: Mix and pump a plug of 56 sx, (38 sx outside casing, 6 sx under retainer, sting out and spot a balanced plug of 12 sx above retainer. Pull up hole, WOC. 9-17-2023:

TIH, tagged Plug 5 at 3417'. TOOH.

RIH, perforate holes at 1882' POOH. Establish injection into perforations.

TIH, set cement retainer at 1829'.

P&A Plug 6: Nacimiento formation top: Mix and pump plug of 62 sx, (44 sx outside casing, 6 sx under, sting out, spot balanced plug of 12 sx above retainer). Pull up hole, WOC.

Tagged Plug 6 at 1708'. TOOH.

RIH, perforate holes at 372'. POOH. Establish injection into perforations with returns out BH.

P&A Plug 7: Surface casing shoe: Mix and pump plug of 225 sx down casing and out BH.

Good cement returns out BH, continued pumping after getting cement out BH as we were getting formation "rocks", shale, clay, and sandstone pieces up to 1" in diameter. Stopped pumping due to concern of plugging flow lines, and the possibility of creating a wash-out under the surface casing shoe. SI with 100 psi on casing, WOC ON.

9-18-2023:

Cut off WH. TOC at surface in both casings. Installed P&A marker, top off cellar with 18 sx.

All cement used was Class G mixed at 15.8 ppg, yield 1.15 cu ft/sx.

Regulatory representative; Clayton Yazzie, BLM

GPS Coordinates: Lat; 36.178056 N, Long; 107.10144 W

DJR Operating, LLC
P&A Marker
Skip Hixon 1
API # 30-039-24172
NW/SE, Unit J, Sec 27, T26N, R3W
Rio Arriba County, NM
Spud Date: 12-9-1987
Plug Date: 9-18-2023





United States Department of the Interior

BUREAU OF INDIAN AFFAIRS

Jicarilla Agency

P.O. Box 167

Dulce, New Mexico 87528

IN REPLY REFER TO:

Branch of Real Estate Services

November 15, 2019

Memorandum

To: Robert Switzer, Environmental Protection Specialist
Bureau of Land Management, Farmington Field Office

From: Kurt Sandoval, Realty Officer
Bureau of Indian Affairs, Jicarilla Agency

Subject: BIA Concurrence concerning Well Pad Monument Makers

Let this serve as concurrence for the agreed upon preferred method to be used when constructing well pad monument markers on Jicarilla Apache Tribal Lands. We will eliminate the 6 ft. dry hole marker and use a permanent metal plate that will be installed at ground level, effective September 2019. The marker will contain the following information:

- Well Pad Lease Number
- Well Pad Location Name and Number
- Well Pad Legal Description, specifically Section, Township and Range
- Well Pad API Number
- Well Pad Plug Date
- Well Pad Operator Name

You may contact our office if you have any questions or concerns at (575) 759-3936. Thank you.


Realty Officer

cc: Jicarilla Oil and Gas Administration

12" x 18" MINIMUM

End of Well Report
DJR Operating, LLC
Skip Hixon 1
API # 30-039-24172
NW/SE, Unit J, Sec 27, T26N, R3W
Rio Arriba County, NM

GL 7390'
KB 7402'
Spud Date 12/9/1987

SURF CSG

Hole size 12.25"
Csg Size: 9.625"
Wt: 36#

Grade: J-55
ID: 8.921
Depth 322'
Csg cap ft³: 0.434
TOC: Surf

FORMATION TOPS

Nacimiento 1832'
Ojo Alamo 3560'

Kirtland 3744'
Fruitland 3830'
Pictured Cliffs 3977'
Chacra 4922'
Mesa Verde 5667'
Mancos 6285'

Gallup 7311'
Dakota 8198'

PROD CSG

Hole size 8.75/7.875"
Csg Size: 5.5"
Wt: 17#
Grade: K-55
ID: 4.892"
Depth 8524'
Csg cap ft³: 0.1305
8.75" OH to 5640'
7.875" OH to 8525'

TOC 3790' (CBL: 11/27/2001)

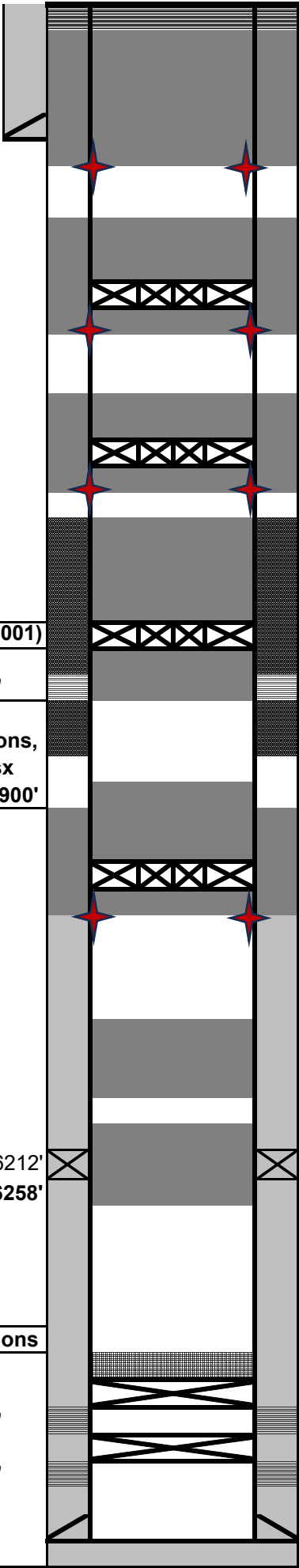
PC perfs 3984-4048'

2001: Prior to P&A Operations,
cement squeeze of 150 sx
through squeeze perfs at 3900'

DV Tool at 6212'
9-8-2023: Found to be at 6258'

2001: Prior to P&A Operations
74' cement on top of CIBP
CIBP 7050' (2001)
7080-7340'
CIBP 7350' (1988)
Dakota perfs 7638-7660'

Original PBTD 8430'
TD 8525'



9-18-2023: Cut off WH, TOC at surface, both casing strings. Install P&A marker, top off cellar with 18 sx.

9-17-2023: Plug 7: Surface casing shoe: Perforate at 372'. Establish circulation down casing and out BH. ND BOP, NU WH flange. Mix and pump plug of 225 sx down casing and out BH, good cement returns out BH.

9-17-2023: Plug 6, Nacimiento: Perf holes at 1882', Set CR at 1829'. Mix and pump plug of 62 sx (44 outside, 6 under and 12 above CR). WOC. Tagged Plug 6 at 1708'.

9-16-2023: Plug 5: Ojo Alamo: Perf holes at 3608'. Set CR at 3556'. Mix and pump plug of 56 sx, (38 outside, 6 under CR, 12 above CR).WOC. 9-17-2023: Tagged Plug 5 at 3417'.

9-16-2023: Run CBL from 2600' to surface, tie-in with CBL from 9-8-2023 while WOC.

9-16-2023: Plug 4: Pictured Cliffs perfs, Pictured Cliffs, Fruitland and Kirtland plug, Set CR at 3968', Pump plug of 45 sx, (12 under CR, 33 above CR), pull up to 3682', reverse out. WOC, tagged TOC at 3682'.

9-15-2023: Plug 3: Chacra: Perforate at 4922', (with BLM and NMOCD approval), set CR at 4883', Mix and pump 41 sx under CR, (36 outside, 5 under), sting out, spot balanced plug of 18 sx above CR. TOOH. WOC, tagged Plug 3 at 4450'.

9-14-2023: Plug 2: Mesa Verde: Mix and spot balanced plug of 20 sx from 5717', WOC. Tagged Plug 2 at 5501'.

9-8-2023: Plug 1: Mancos: Mix and spot balanced plug of 20 sx from 6335'. WOC. 9-14-2023: Tagged Plug 1 at 6193'.

9-8-2023: Load hole to 2550'. CBL log from 6736' to 2550': Stage 1 TOC at DV tool (6258'), Stage 2 TOC 4960' and 2001 squeeze TOC 3790'.

9-5 to 7-2023: TIH with bit and 2 3/8" workstring: tagged fill at 4081', clean out fill, tagged cement plug from 2001 squeeze at 4177'. Drilled out cement plug from 4177' to 4428'. TIH, tagged PBTD at 6997'.

All cement used was Class G mixed at 15.8 ppg, yield 1.15 cu ft/sx
Regulatory representative: Clay Yazzie, BLM
GPS Coordinates: 36.178056 N; 107.101944 W

District I
1625 N. French Dr., Hobbs, NM 88240
Phone:(575) 393-6161 Fax:(575) 393-0720
District II
811 S. First St., Artesia, NM 88210
Phone:(575) 748-1283 Fax:(575) 748-9720
District III
1000 Rio Brazos Rd., Aztec, NM 87410
Phone:(505) 334-6178 Fax:(505) 334-6170
District IV
1220 S. St Francis Dr., Santa Fe, NM 87505
Phone:(505) 476-3470 Fax:(505) 476-3462

State of New Mexico
Energy, Minerals and Natural Resources
Oil Conservation Division
1220 S. St Francis Dr.
Santa Fe, NM 87505

CONDITIONS

Action 272360

CONDITIONS

Operator: DJR OPERATING, LLC 1 Road 3263 Aztec, NM 87410	OGRID: 371838
	Action Number: 272360
	Action Type: [C-103] Sub. Plugging (C-103P)

CONDITIONS

Created By	Condition	Condition Date
mkuehling	well plugged 9/18/2023	10/27/2023