

Well Name: CARRACAS 14B	Well Location: T32N / R4W / SEC 15 / SWNE / 36.989239 / -107.239399	County or Parish/State: RIO ARRIBA / NM
Well Number: 2H	Type of Well: OTHER	Allottee or Tribe Name:
Lease Number: FEE	Unit or CA Name: 2H CARRACAS 14B - FRCL	Unit or CA Number: NMNM112654
US Well Number: 300393096200S1	Well Status: Abandoned	Operator: MORNINGSTAR OPERATING LLC

Subsequent Report

Sundry ID: 2754649

Type of Submission: Subsequent Report	Type of Action: Plug and Abandonment
Date Sundry Submitted: 10/03/2023	Time Sundry Submitted: 01:28
Date Operation Actually Began: 09/27/2023	

Actual Procedure: MorningStar Operating has plugged and abandoned the Carracas 14B 2H as of 09/27/2023. Attached are the Daily and Cement Reports and Final WBD. CBL was not required per BLM Engineer, M. Kade.

SR Attachments

Actual Procedure

- Carracas_14B_2H_WBD_Final_PA_20231003132657.pdf
- Carracas_14B_2H_Daily_Cement_Reports_20231003132614.pdf

Well Name: CARRACAS 14B	Well Location: T32N / R4W / SEC 15 / SWNE / 36.989239 / -107.239399	County or Parish/State: RIO ARRIBA / NM
Well Number: 2H	Type of Well: OTHER	Allottee or Tribe Name:
Lease Number: FEE	Unit or CA Name: 2H CARRACAS 14B - FRCL	Unit or CA Number: NMNM112654
US Well Number: 300393096200S1	Well Status: Abandoned	Operator: MORNINGSTAR OPERATING LLC

Operator

I certify that the foregoing is true and correct. Title 18 U.S.C. Section 1001 and Title 43 U.S.C. Section 1212, make it a crime for any person knowingly and willfully to make to any department or agency of the United States any false, fictitious or fraudulent statements or representations as to any matter within its jurisdiction. Electronic submission of Sundry Notices through this system satisfies regulations requiring a

Operator Electronic Signature: CONNIE BLAYLOCK	Signed on: OCT 03, 2023 01:27 PM
Name: MORNINGSTAR OPERATING LLC	
Title: Regulatory Technician	
Street Address: 400 W 7th St.	
City: Forth Worth	State: TX
Phone: (817) 334-7882	
Email address: CBLAYLOCK@MSPARTNERS.COM	

Field

Representative Name: Amy Byars		
Street Address:		
City:	State:	Zip:
Phone:		
Email address: abyars@txopartners.com		

BLM Point of Contact

BLM POC Name: MATTHEW H KADE	BLM POC Title: Petroleum Engineer
BLM POC Phone: 5055647736	BLM POC Email Address: MKADE@BLM.GOV
Disposition: Accepted	Disposition Date: 10/04/2023
Signature: Matthew Kade	

[illegible]

[illegible]



AZTEC WELL SERVICING CO.

CEMENT JOB DETAIL SHEET

CUSTOMER: MORNINGSTAR OPERATING, LLC.		DATE: September 27, 2023		API Number: 30-039-30962		TYPE OF JOB: P & A	
LEASE & WELL NAME: CARRACAS 14B #2H		LOCATION: Sec.15,T321N,R04W		SERVICE SUP: DEAN MESTAS			
SERVICE CONTRACTOR: RIG 450		OPERATOR: AZTEC WELL SERVICE		COUNTY: RIO ARriba		STATE: NEW MEXICO	

MATERIALS FURNISHED:	TYPE OF PLUGS:		LIST CSG. HARDWARE:	SQUEEZE MANIFOLD:	TOP OF EACH FLUID:	PHYSICAL SLURRY PROPERTIES:					
	TOP					SLURRY WEIGHT: Lb/gal	SLURRY YIELD: Cuft/sk	WATER REQ.: Gals/sk	PUMP TIME: hr:mm	SLURRY: bbls	MIX WATER: bbls
	BOTTOM										

PRE-FLUSH - FRESH WATER										
Plug 1: Pumped 13.3bbls cement slurry ((65sx; 15.8ppg, 1.15cuft/ft, 5.0gals/sk))					3318'	15.80	1.15	5.00	13.3	7.7
Plug 2: Pumped 12.5bbls cement slurry ((61sx; 15.8ppg, 1.15cuft/ft, 5.0gals/sk))					2674'	15.80	1.15	5.00	12.5	7.3
Plug 3: Pumped 6.8bbls cement slurry ((33sx; 15.8ppg, 1.15cuft/ft, 5.0gals/sk))					1382'	15.80	1.15	5.00	6.8	3.9
Plug 4: Pumped 16.0bbls cement slurry ((78sx; 15.8ppg, 1.15cuft/ft, 5.0gals/sk))					Surface	15.80	1.15	5.00	16.0	9.3
Top off: Pumped 5.1bbls cement slurry ((25sx; 15.8ppg, 1.15cuft/ft, 5.0gals/sk)) to top off 7" casing & fill cellar					Surface	15.80	1.15	5.00	5.1	3.0

AVAILABLE MIX WATER: 400.0 BBLs				AVAILABLE DISPLACEMENT WATER: 360.0 BBLs				TOTAL MIX WATER: 31.2			
HOLE				TBG.-CSG.-D.P.				COLLAR DEPTHS			
SIZE	% EXCESS	DEPTH		SIZE	WEIGHT	TYPE	DEPTH	SIZE	WEIGHT	TYPE	DEPTH
12 1/2	100%	234'		9 5/8	23.00	H-40	230'	2 3/8	4.70	J-55	3626'
LAST CASING				PKR-CMT RET-BR PL-LINER				TOP CONNECTION			
SIZE	WEIGHT	TYPE	DEPTH	BRAND & TYPE		DEPTH	TOP	BOTTOM	SIZE	THREAD	
7	23.00	J-55	4124'				4051'	5805'	2 3/8	8 ROUND	
CALCULATED DISPLACEMENT VOLUME: BBL				CAL. PSI		CAL. MAX PSI	OP. MAX	MAX TBG. PSI	MAX CASING PSI		
TUBING	CASING	CASING	TOTAL	BUMP PLUG	TO REVERSE		SQ. PSI	RATED	OPER	RATED	OPER
							650		1,100		650
									DISPLACEMENT FLUID		WATER
									TYPE		WEIGHT
									FRESH WATER		8.33
											CITY WATER

EXPLANATION: TROUBLE SETTING TOOL, RUNNING CASING, ETC., PRIOR TO CEMENTING:											
--	--	--	--	--	--	--	--	--	--	--	--

PUMP DETAILS:						DAILY SUMMARY:					
TIME	PRESSURE - PSI		RATE	BBL FLUID	FLUID	SAFETY MEETING: CREW <input checked="" type="checkbox"/> CO. REP. <input checked="" type="checkbox"/>					
HR: MIN:	PIPE	ANNULUS	BPM:	PUMPED:	TYPE:	TEST LINES: PSI					
						CIRCULATED THE WELL: RIG PUMP <input checked="" type="checkbox"/> CMT PUMP <input checked="" type="checkbox"/>					
5:00	-	-	-	-	-	Travel to location					
7:00	-	-	-	-	-	Pre-Start Inspection, Service & Start equipment					
7:15	0	0/0	-	-	-	Check PSI on Well: Tbg = 0psi; Csg = 0psi; BH = 0psi.					
7:30	-	-	-	-	-	TIH w/ tubing to top or retainer...tagged to verify depth...prepare for cement					
	350	0	2.00	2.00	H2O	Pumped 2.0bbls fresh water ahead to load casing					
	275	0	3.00	13.30	CEMENT	Pumped 13.3bbls cement slurry ((65sx; 15.8ppg, 1.15cuft/ft, 5.0gals/sk))					
	300	0	3.00	12.70	H2O	Pumped 12.7bbls water displacement... Estimated TOC @ 3289'					
9:30	-	-	-	-	-	SD...WOC 4hrs					
-	-	-	-	-	-	TOOH w/ tubing to 3091'...prepare to reverse circulate clean					
-	250	0	2.50	14.00	H2O	Pumped 14.0bbls water to reverse circulate clean...had 0.5bbl of cement returns at the pit					
-	-	-	-	-	-	SD...resume WIC time					
-	-	-	-	-	-	TIH w/ tubing to tag top of cement...Tagged TOC @ 3318'					
-	-	-	-	-	-	TOOH & LD tubig to 2996'...prepare for cement					
-	250	0	2.00	2.00	H2O	Pumped 2.0bbls fresh water ahead to load casing					
-	200	0	3.00	12.50	CEMENT	Pumped 12.5bbls cement slurry ((61sx; 15.8ppg, 1.15cuft/ft, 5.0gals/sk))					
-	225	0	3.00	10.30	H2O	Pumped 10.3bbls water displacement... Estimated TOC @ 2674'					
-	-	-	-	-	-	SD					
-	-	-	-	-	-	TOOH w/ tubing to 1556'...prepare for cement					
-	200	0	2.00	4.00	H2O	Pumped 4.0bbls fresh water ahead to load casing					
-	175	0	2.00	6.80	CEMENT	Pumped 6.8bbls cement slurry ((33sx; 15.8ppg, 1.15cuft/ft, 5.0gals/sk))					
-	175	0	2.00	5.30	H2O	Pumped 5.3bbls water displacement... Estimated TOC @ 1382'					
-	-	-	-	-	-	SD...Rig down all handling equipment and rig floor, ND and wash out BOP					
-	-	-	-	-	-	TOOH & LD tubing and LD tag sub...prepare for wireline					
-	-	-	-	-	-	MIRU wireline services					
-	-	-	-	-	-	RIH w/ perf gun & WL to perf depth of 255'...Monitored BH, had no action observed while perforating					
-	-	-	-	-	-	ROOH w/ wireline & LD perf gun...verified all shots fired...cont to Monitored BH for 30mins...no change, prepare for cement					
-	-	-	-	-	-	TIH w/ tubing to 288'...prepare for cement					
-	150	0	2.00	2.00	H2O	Pumped 2.0bbls fresh water ahead to load casing					
-	150	0	2.00	16.00	CEMENT	Pumped 16.0bbls cement slurry ((78sx; 15.8ppg, 1.15cuft/ft, 5.0gals/sk))...circulate 2.0bbls good cement to surface...shutdown					
-	-	-	-	-	-	TOOH & LD tubing...Rig down all handling equipment and rig floor, NDBOP and wash out & wash equipment...prepare to cutoff WH					
-	-	-	-	-	-	MIRU welder...cut wellhead off...had cement to surface on BH...TOC for 7" @ 19'					
-	-	-	-	-	-	Install dryhole marker					
-	-	-	2.00	5.10	CEMENT	Pumped 5.1bbls cement slurry ((25sx; 15.8ppg, 1.15cuft/ft, 5.0gals/sk)) to top off 7" casing & fill cellar					
-	-	-	-	-	-	SD					
-	-	-	-	-	-	Secure wellhead and equipment...SDON					
20:00	-	-	-	-	-	Travel to the yard					

BUMPED PLUG:	PSI TO BUMP PLUG:	TEST FLOAT EQUIPMENT:	TOTAL BBL PUMPED:	BBL CMT. RETURNS/ REVERSED:	PSI LEFT ON CSG.:	SPOT TOP CEMENT:	AZTEC WELL SERVICING CO REP.: DEAN MESTAS
			106.0		0	Surface	CUSTOMER REP.: JASON PEACE
							CUSTOMER REPR. SIGNATURE: _____
							CUSTOMER AUTHORIZING AGENT

MorningStar Operating, LLC

Current WBD - P&A
09/27/2023

Carracas 14B-2H Rio Arriba County, NM

Sec 15, 32N-4W

TD – 6,004' MD; 3,374' TVD
PBSD – 5,890'; 3,369' TVD

12 1/4" hole to 234'
Sfc Csg: 5 jts – 9 5/8" 32.3# H-40 ST&C
Setting Depth: 230 ft

Cement
125 sx Class G
circ. 10 bbls cmt to surface

8 3/4" hole to 4126'
Int. Csg: 97 jts 7" 23# J-55 LT&C
Setting Depth: 4124 ft

Cement
480 sx 65/35
Tail: 150 sx Class G
circ. 5 bbls cmt to surface

6 1/4" hole to 4,551' (09/01/2011)
Liner: 12 jts 4.5", 11.6#, J-55 LTC
Setting Depth: 4,551'
Top of Liner: 4,046'
No Cement

6-1/4" hole from Mill Window (3,972'-3,980')
Drill to 6,004' MD. Drilling BHA stuck.
Unsuccessful attempts to retrieve.
Drilling BHA Fish In Hole from 3,704' – 5,955'.
LINER: 4", 14#, S135 Drill Pipe w/ BHA

05/05/2012
CIBP @3990'
Whipstock on top.
Mill Window: 3,972' – 3,980'

Perforations 09/2011
4,051' – 4,464' (413 holes, 1 spf)

Acidized w/ 1200 gals 15% HCL. Flow back.
Acidize w/ 1,176 gals 15% HCL. Flow back.

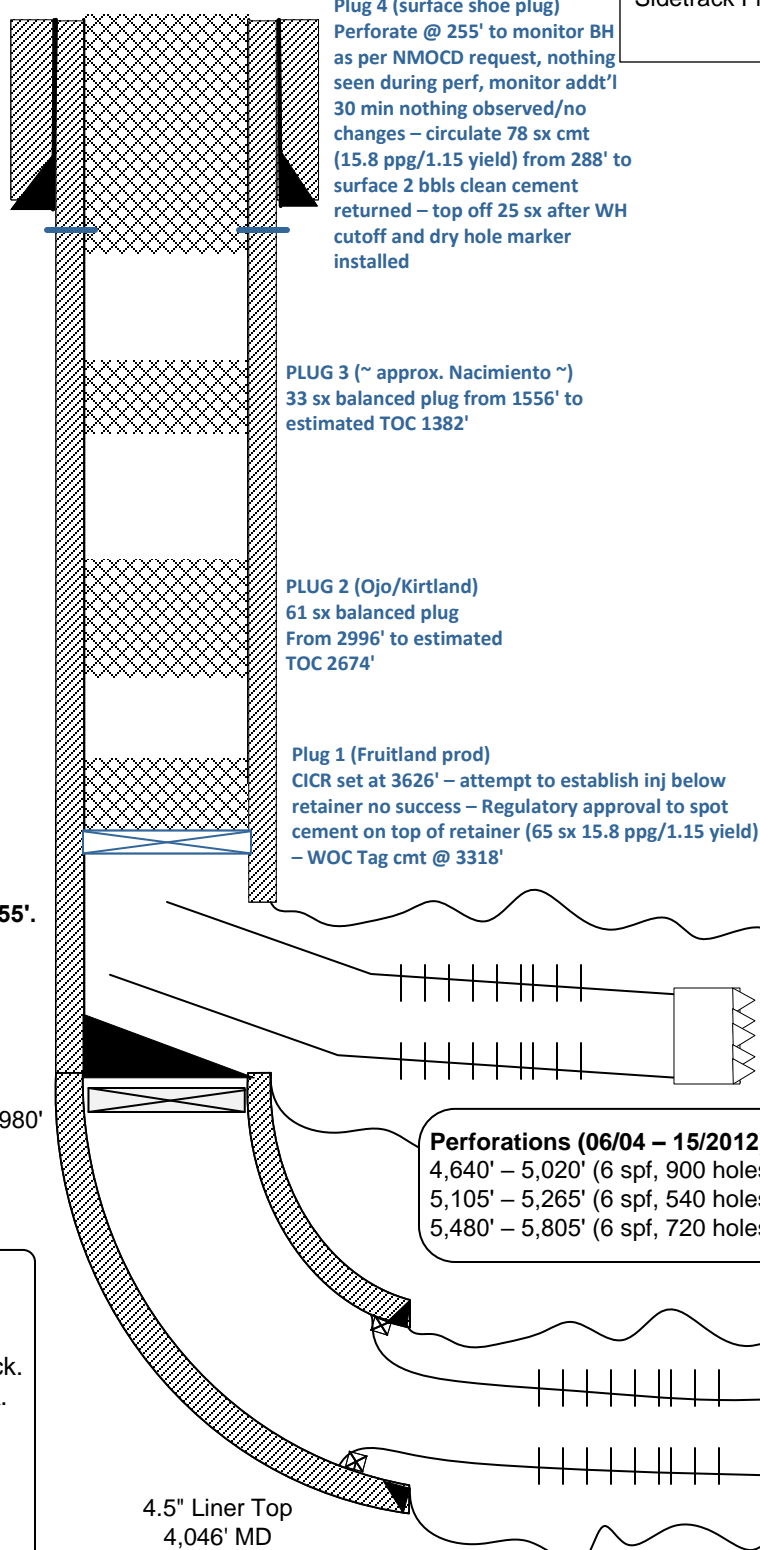
Re-Perforate (10/15/2011)
6 SPF, 360 holes
4,230' – 4,250'
4,354' – 4,374'
4,480' – 4,500'

Acidized w/ 1500 gals 15% HCL.

Prepared by MStodola2: 01/02/2018
B.Savage/BBerry: 07/20/2023
Updated BBerry 10/2/2023

KB = 13.5 ft
GL = 6,536 ft
API# 30-039-30962

Spud Date: 08/19/2011
First Delivered: 11/16/2011
Sidetrack: 05/05/2012
Sidetrack First Delivered: 07/20/2012
P&A: 09/27/2023



District I
1625 N. French Dr., Hobbs, NM 88240
Phone:(575) 393-6161 Fax:(575) 393-0720

District II
811 S. First St., Artesia, NM 88210
Phone:(575) 748-1283 Fax:(575) 748-9720

District III
1000 Rio Brazos Rd., Aztec, NM 87410
Phone:(505) 334-6178 Fax:(505) 334-6170

District IV
1220 S. St Francis Dr., Santa Fe, NM 87505
Phone:(505) 476-3470 Fax:(505) 476-3462

State of New Mexico
Energy, Minerals and Natural Resources
Oil Conservation Division
1220 S. St Francis Dr.
Santa Fe, NM 87505

CONDITIONS

Action 272466

CONDITIONS

Operator: MorningStar Operating LLC 400 W 7th St Fort Worth, TX 76102	OGRID: 330132
	Action Number: 272466
	Action Type: [C-103] Sub. Plugging (C-103P)

CONDITIONS

Created By	Condition	Condition Date
mkuehling	well plugged 9/27/2023	10/27/2023