

Office
 District I – (575) 393-6161
 1625 N. French Dr., Hobbs, NM 88240
 District II – (575) 748-1283
 811 S. First St., Artesia, NM 88210
 District III – (505) 334-6178
 1000 Rio Brazos Rd., Aztec, NM 87410
 District IV – (505) 476-3460
 1220 S. St. Francis Dr., Santa Fe, NM
 87505

State of New Mexico
 Energy, Minerals and Natural Resources

Form C-103
 Revised July 18, 2013

OIL CONSERVATION DIVISION
 1220 South St. Francis Dr.
 Santa Fe, NM 87505

SUNDRY NOTICES AND REPORTS ON WELLS (DO NOT USE THIS FORM FOR PROPOSALS TO DRILL OR TO DEEPEN OR PLUG BACK TO A DIFFERENT RESERVOIR. USE "APPLICATION FOR PERMIT" (FORM C-101) FOR SUCH PROPOSALS.)		WELL API NO. 30-045-34144
1. Type of Well: Oil Well <input type="checkbox"/> Gas Well <input checked="" type="checkbox"/> Other		5. Indicate Type of Lease STATE <input type="checkbox"/> FEE <input type="checkbox"/>
2. Name of Operator SIMCOE LLC		6. State Oil & Gas Lease No. E-3707-5
3. Address of Operator 1199 Main Ave, Durango, CO 81301		7. Lease Name or Unit Agreement Name NEBU
		8. Well Number 346
		9. OGRID Number 6137
		10. Pool name or Wildcat Basin Dakota
4. Well Location Unit Letter P : 1240 feet from the South line and 1205 feet from the East line Section 36 Township 31N Range 8W NMPM San Juan County		
11. Elevation (Show whether DR, RKB, RT, GR, etc.) 6414' GR		

12. Check Appropriate Box to Indicate Nature of Notice, Report or Other Data

NOTICE OF INTENTION TO:		SUBSEQUENT REPORT OF:	
PERFORM REMEDIAL WORK <input type="checkbox"/>	PLUG AND ABANDON <input type="checkbox"/>	REMEDIAL WORK <input type="checkbox"/>	ALTERING CASING <input type="checkbox"/>
TEMPORARILY ABANDON <input checked="" type="checkbox"/>	CHANGE PLANS <input type="checkbox"/>	COMMENCE DRILLING OPNS. <input type="checkbox"/>	P AND A <input type="checkbox"/>
PULL OR ALTER CASING <input type="checkbox"/>	MULTIPLE COMPL <input type="checkbox"/>	CASING/CEMENT JOB <input type="checkbox"/>	
DOWNHOLE COMMINGLE <input type="checkbox"/>			
CLOSED-LOOP SYSTEM <input type="checkbox"/>			
OTHER: <input type="checkbox"/>		OTHER: <input type="checkbox"/>	

13. Describe proposed or completed operations. (Clearly state all pertinent details, and give pertinent dates, including estimated date of starting any proposed work). SEE RULE 19.15.7.14 NMAC. For Multiple Completions: Attach wellbore diagram of proposed completion or recompletion.

MIRU service unit. Pull rodstring/pump/tubing if present in well. RIH cast iron bridge plug and set at 7900'. Top off casing with 2% KCl w/ biocide and corrosion inhibitor. Pressure test casing to 500 psi for 30 min. Pressure shall not decrease more than 50 psi over the 30 min period. Open casing valves to check for flow or pressure change. Test shall be recorded using a chart recorder with a maximum two hour clock and 1000 pound spring, calibrated within six months prior to MIT of casing. Submit chart, C-103, and wellbore diagram showing well details and plug set depth. Air gap and blind flange production flow lines. After a period not to exceed 5 years after the temporary abandonment has been completed, a workover rig will remove the cast iron bridge plug and monitor pressure buildup of the well for a two week period to determine if the well will return to a production status. If the decision is made to not produce the well, a request for plugging and abandonment will be submitted. If the decision is made to produce the well, all necessary flow and production lines will be reinstalled for a flow ready status up to and including any removed flowmeters and well ties. Surface facilities will be placed for production purposes.

Spud Date:

Rig Release Date:

I hereby certify that the information above is true and complete to the best of my knowledge and belief.

SIGNATURE Christy Kost TITLE Regulatory Analyst DATE 10/30/2023

Type or print name Christy Kost E-mail address: christy.kost@ikavenergy.com PHONE: 970-822-8931

For State Use Only

APPROVED BY: Monica Kuehling TITLE Deputy Oil and Gs Inspector DATE 11/3/2023

Conditions of Approval (if any):

Procedure - Temporary Abandonment

NEBU #346
(P) Sec 36, T31N, R8W
San Juan County
30-045-34144

MIRU service unit.

Pull rodstring/pump/tubing if present in well.

RIH cast iron bridge plug and set at 7900'

Top off casing with 2% KCl w/biocide and corrosion inhibitor

Pressure test casing to 500 psi for 30 min. Pressure shall not decrease more than 50 psi over the 30 min period

Open casing valves to check for flow or pressure change.

Test shall be recorded using a chart recorder with a maximum two hour clock and 1000 pound spring, calibrated within six months prior to MIT of casing

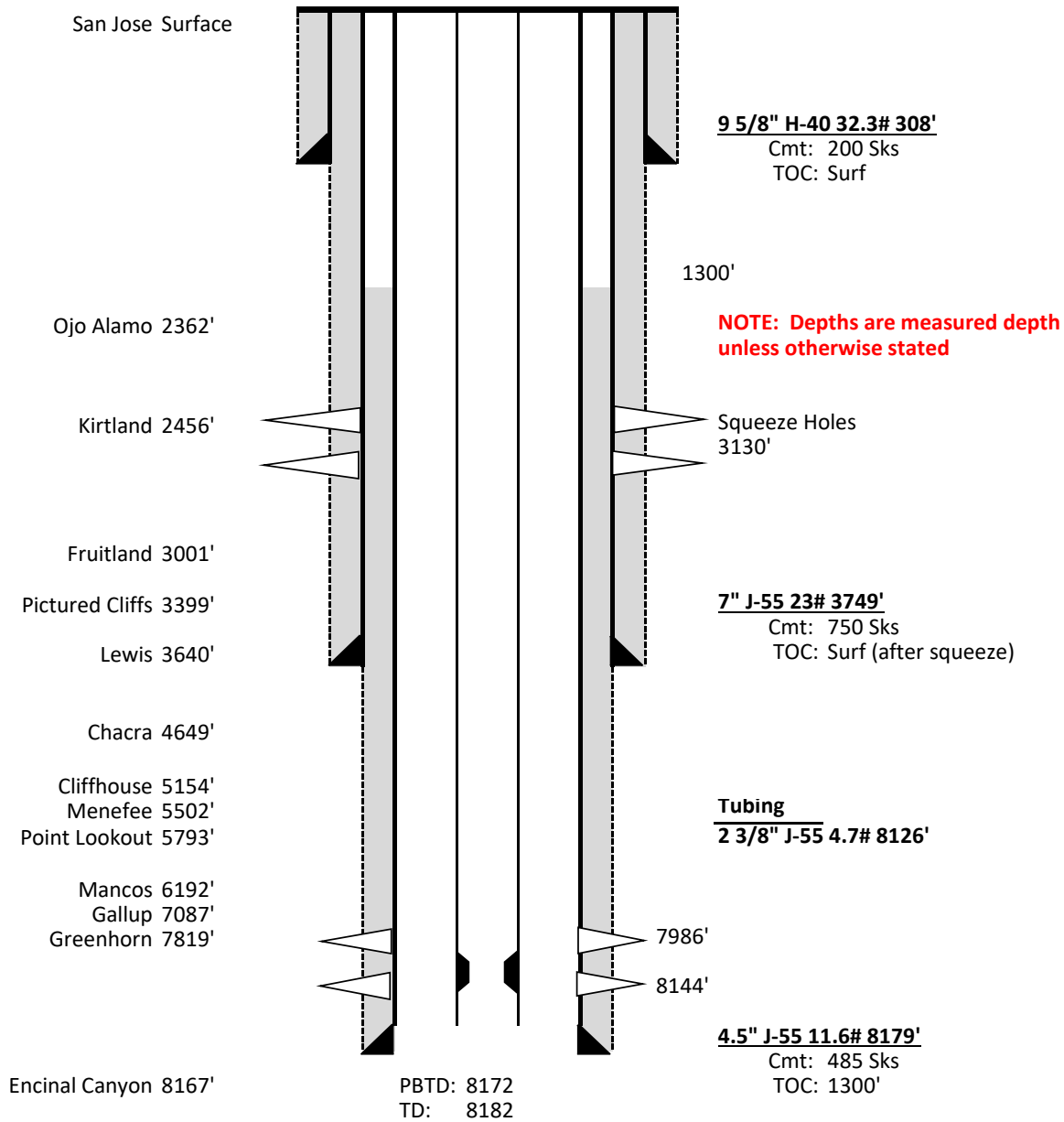
Submit chart, C-103, and wellbore diagram showing well details and plug set depth.

Air gap and blind flange production flow lines.

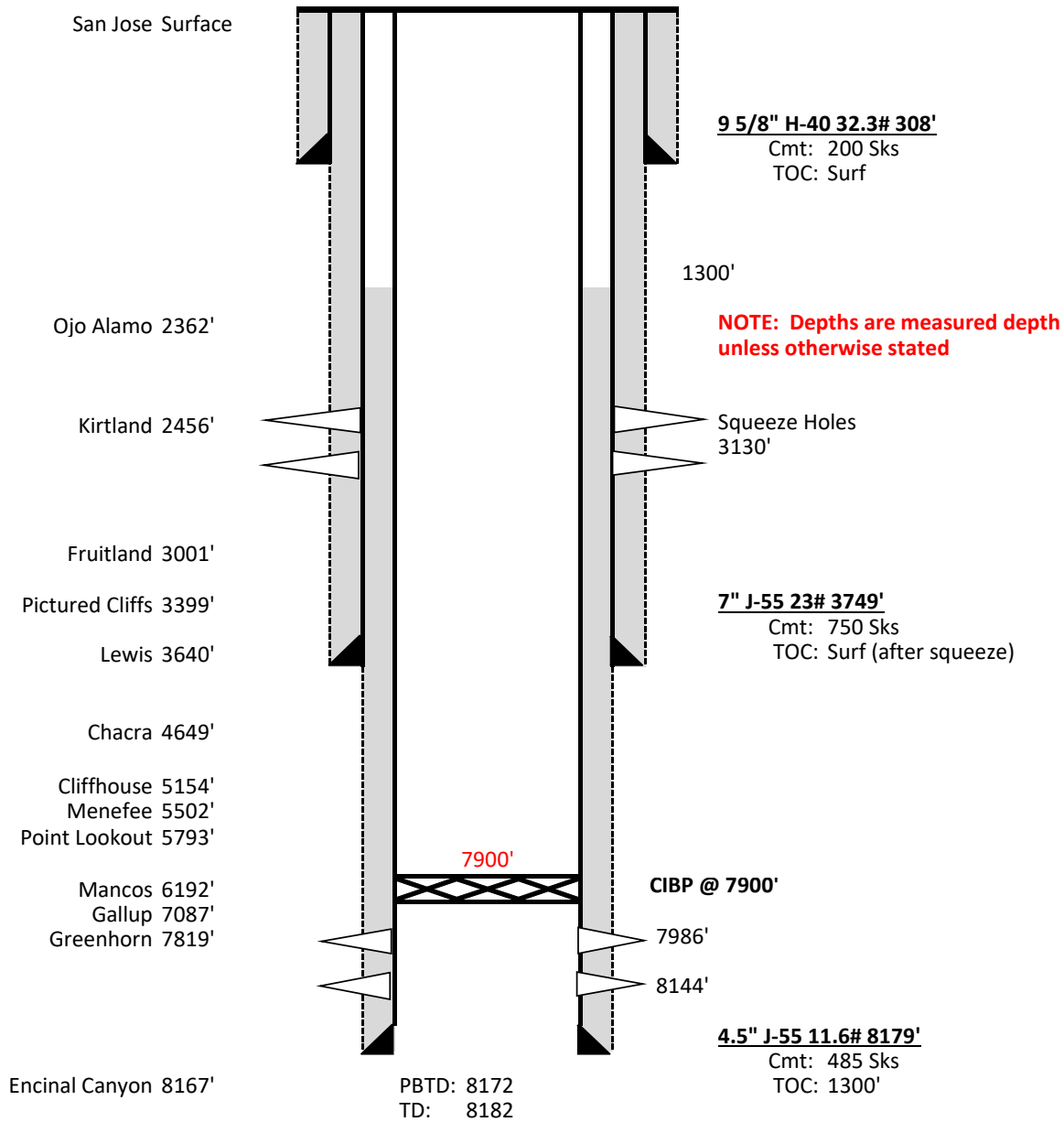
After a period not to exceed 5 years after the temporary abandonment has been completed, a workover rig will remove the cast iron bridge plug and monitor pressure buildup of the well for a two week period to determine if the well will return to a production status. If the decision is made to not produce the well, a request for plugging and abandonment will be submitted.

If the decision is made to produce the well, all necessary flow and production lines will be reinstalled for a flow ready status up to and including any removed flowmeters and well ties. Surface facilities will be placed for production purposes.

NEBU #346
(P) Sec 36, T31N, R8W
San Juan County
30-045-34144



**NEBU #346
(P) Sec 36, T31N, R8W
San Juan County
30-045-34144
Temporary Abandonment**



District I
1625 N. French Dr., Hobbs, NM 88240
Phone:(575) 393-6161 Fax:(575) 393-0720
District II
811 S. First St., Artesia, NM 88210
Phone:(575) 748-1283 Fax:(575) 748-9720
District III
1000 Rio Brazos Rd., Aztec, NM 87410
Phone:(505) 334-6178 Fax:(505) 334-6170
District IV
1220 S. St Francis Dr., Santa Fe, NM 87505
Phone:(505) 476-3470 Fax:(505) 476-3462

State of New Mexico
Energy, Minerals and Natural Resources
Oil Conservation Division
1220 S. St Francis Dr.
Santa Fe, NM 87505

CONDITIONS

Action 280845

CONDITIONS

Operator: SIMCOE LLC 1199 Main Ave., Suite 101 Durango, CO 81301	OGRID: 329736
	Action Number: 280845
	Action Type: [C-103] NOI Temporary Abandonment (C-103I)

CONDITIONS

Created By	Condition	Condition Date
mkuehling	Testing Pressure cannot drop below 500 psi on a ta'd well - Notify NMOCD 24 hours prior to testing. Bradenhead test required prior to MIT day of MIT	11/3/2023