

Submit a Copy To Appropriate District

Office
 District I – (575) 393-6161
 1625 N. French Dr., Hobbs, NM 88240
 District II – (575) 748-1283
 811 S. First St., Artesia, NM 88210
 District III – (505) 334-6178
 1000 Rio Brazos Rd., Aztec, NM 87410
 District IV – (505) 476-3460
 1220 S. St. Francis Dr., Santa Fe, NM
 87505

State of New Mexico
 Energy, Minerals and Natural Resources

Form C-103
 Revised July 18, 2013

OIL CONSERVATION DIVISION
 1220 South St. Francis Dr.
 Santa Fe, NM 87505

WELL API NO. 30 039 2696
5. Indicate Type of Lease STATE <input checked="" type="checkbox"/> FEE <input type="checkbox"/>
6. State Oil & Gas Lease No. E-347
7. Lease Name or Unit Agreement Name Rosa Unit
8. Well Number 24C
9. OGRID Number 289408
10. Pool name or Wildcat Basin Dakota / Blanco Mesaverde

SUNDRY NOTICES AND REPORTS ON WELLS (DO NOT USE THIS FORM FOR PROPOSALS TO DRILL OR TO DEEPEN OR PLUG BACK TO A DIFFERENT RESERVOIR. USE "APPLICATION FOR PERMIT" (FORM C-101) FOR SUCH PROPOSALS.)	
1. Type of Well: Oil Well <input type="checkbox"/> Gas Well <input checked="" type="checkbox"/> Other	
2. Name of Operator LOGOS Operating, LLC	
3. Address of Operator 2010 Afton Place, Farmington NM 87401	
4. Well Location Unit Letter <u>C</u> : <u>210</u> feet from the <u>L</u> line and <u>1905</u> feet from the <u>FWL</u> line Section <u>32</u> Township <u>31</u> Range <u>05W</u> NMPM County <u>Rio Arriba</u>	
11. Elevation (Show whether DR, RKB, RT, GR, etc.) 6500'	

12. Check Appropriate Box to Indicate Nature of Notice, Report or Other Data

NOTICE OF INTENTION TO: PERFORM REMEDIAL WORK <input type="checkbox"/> PLUG AND ABANDON <input type="checkbox"/> TEMPORARILY ABANDON <input type="checkbox"/> CHANGE PLANS <input type="checkbox"/> PULL OR ALTER CASING <input type="checkbox"/> MULTIPLE COMPL <input type="checkbox"/> DOWNHOLE COMMINGLE <input type="checkbox"/> CLOSED-LOOP SYSTEM <input type="checkbox"/> OTHER: Drill out bridge plug <input checked="" type="checkbox"/>	SUBSEQUENT REPORT OF: REMEDIAL WORK <input type="checkbox"/> ALTERING CASING <input type="checkbox"/> COMMENCE DRILLING OPNS. <input type="checkbox"/> P AND A <input type="checkbox"/> CASING/CEMENT JOB <input type="checkbox"/> OTHER: <input type="checkbox"/>
---	---

13. Describe proposed or completed operations. (Clearly state all pertinent details, and give pertinent dates, including estimated date of starting any proposed work). SEE RULE 19.15.7.14 NMAC. For Multiple Completions: Attach wellbore diagram of proposed completion or recompletion.

Well was isolated with CBP @ 4695' on 7/25/2023 due to PAD 31 completions.

LOGOS Operating, LLC request to drill out bridge plug and return well to production as a Mesaverde/Dakota commingle. See attached operations procedure.

Spud Date:

Rig Release Date:

I hereby certify that the information above is true and complete to the best of my knowledge and belief.

SIGNATURE Etta Trujillo TITLE Regulator Specialist DATE 10/17/2023

Type or print name Etta Trujillo E-mail address: etrujillo@logosresourcesllc.com PHONE: 505 258-2936

For State Use Only

APPROVED BY: Dean R McClure TITLE Petroleum Engineer DATE 11/07/2023

Conditions of Approval (if any):

LOGOS Operating, LLC
Rosa Unit 024C

RETURN TO PRODUCTION:

1. Hold safety meeting. MIRU workover rig. Place fire and safety equipment in strategic locations. Comply with all LOGOS, BLM, and NMOCD rules and regulations.
2. Lay flow lines. Check and record casing and tubing pressures.
3. ND WH. NU BOP.
4. TOOH standing back tubing.

Current tubing configuration:

NO.	DESCRIPTION
1	1.78" SN
1	2-3/8" 4.7# J-55 tubing joint
1	2-3/8" 4.7# J-55 marker joint (2')
~146	2-3/8" 4.7# J-55 tubing joints

5. Pick up mill and TIH with tubing as follows to ~2000' and utilize an air package to unload the well. Establish circulation w/ +/-500-1500 scfm and wait for pressure to normalize. After circulation has been achieved, begin pumping 1-2 bpm mist rate and unload hole.
6. PU power swivel, TIH to CBP (~4695'), and drill out the CBP. Establish and maintain good circulation and monitor returns while and after drilling out CBP. Continue cleaning out and pushing plug to bottom, short tripping if required, and adding foamer as necessary to carry returns. TOOH, standing back tubing, and LD power swivel and 4-3/4" float valve/bit/mill.
7. Drift in hole with tubing as follows. Land EOT at ~7989'.

NO.	DESCRIPTION
1	1/2 Muleshoe collar w/ exp check
1	1.78" SN
1	2-3/8" 4.7# J-55 tubing joint
1	2-3/8" 4.7# J-55 marker joint (2')
~248	2-3/8" 4.7# J-55 tubing joints

8. ND BOP, NU WH.
9. Unload well with air package.
10. Pump 2-3 bbls of water and drop ball, pressure test to 500psi and pump off expendable check. Record pressure.
11. After check is pumped off, reverse well and unload with air package up the tubing string.
12. **Notify manager that well is ready to be returned to plunger lift operations.**

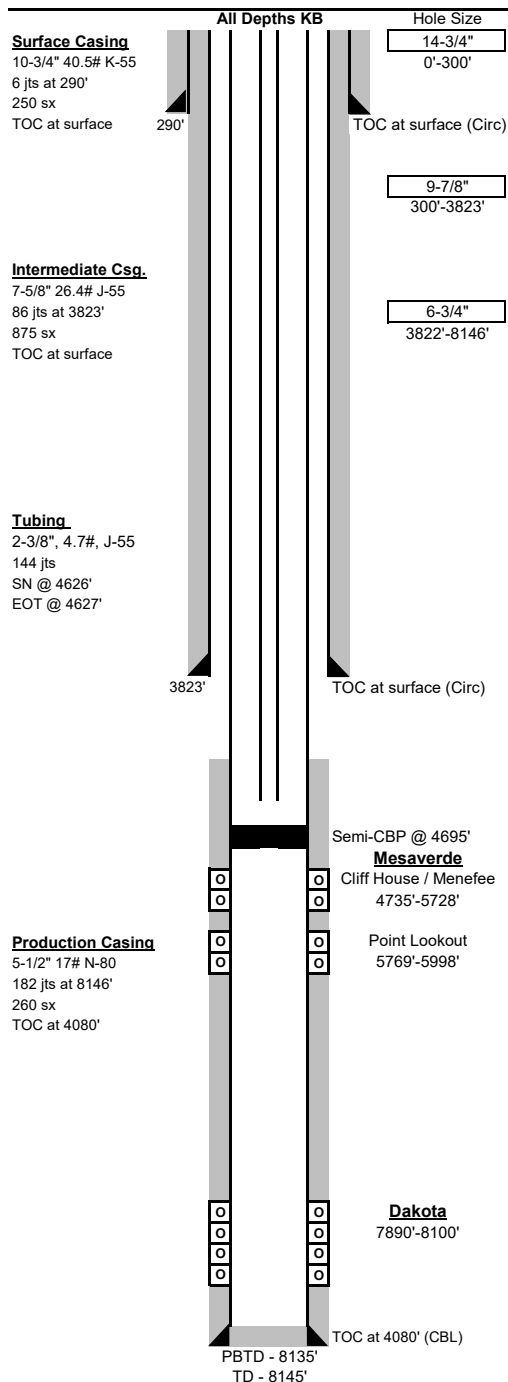
WELL MUST BE PURGED OF OXYGEN PRIOR TO SENDING TO PRODUCTION EQUIPMENT OR TO SALES.



Wellbore Schematic

Well Name: Rosa Unit 24C
 Location: Sec 32, T31N, R05W 210' FNL & 1905' FWL
 County: Rio Arriba
 API #: 30-039-26968
 Co-ordinates: Lat 36.8627319°, -107.388176° NAD 83
 Elevations: GROUND: 6500'
 KB: 6514'
 Depths (KB): PBTD: 8135'
 TD: 8145'

Date Prepared: 12/4/2020 Gomez
 Reviewed by: 12/15/2020 Moss
 Spud Date: 6/26/2002
 Completion Date: 7/26/2002
 Last Workover Date: 7/7/2021
 Last Updated: 8/1/2023 Peace

**Surface Casing: (6/26/2002)**

Drilled 14-3/4" surface hole to 300'. Ran 6 jts 10-3/4" 40.5# K-55 csg set at 290'.
 Cmt'd w/ 250 sx Type III RMS (350 cf). Circulated 13 bbls of cement to surface.

Intermediate Casing: (7/2/2002)

Drilled 9-7/8" intermediate hole to 3823'. Ran 86 jts 7-5/8" 26.4# J-55 csg set at 3823'.
 Cmt'd lead w/ 620 sx Type III 65/35 poz (1292 cf). Cmt'd tail w/ 255 sx Type III cmt (352 cf).
 Circulated 25 bbls of cement to surface.

Production Casing: (7/3/2002)

Drilled 6-3/4" production hole to 8146'. Ran 182 jts 5-1/2" 17# N-80 csg set at 8146'.
 Cmt'd w/ 30 sx Premium Lite HS (80 cf). Cmt tail w/ 230 sx Premium Lite HS (470 cf).
 TOC at 4080' CBL.

Tubing: (7/7/2021)

	Length (ft)
KB	14
(143) 2-3/8", 4.7#, J-55 tbg jnts	4578
(1) 2-3/8", 4.7#, J-55 tbg marker jt (2')	2
(1) 2-3/8", 4.7#, J-55 tbg jnt	32
(1) 1.78" Seat nipple	1
Set at:	4627 ft

Perforations: (7/26/2002)

Dakota: (7890'-8100') 1 SPF, 0.46" dia, 22.12" pen & 19 g charges; Acid 500 gal 15% HCl.

7890', 82', 87', 7992', 95', 8028', 32', 34', 38', 41', 45', 62', 65', 68', 74', 8100'.

Frac w/ 4500# 100 mesh ahead, 85,240# 20/40 Ottawa sand, 5240# FLEX sand in 20Q foam.

Mesaverde: Point Lookout- (5769'-5998') 1 SPF, 0.33" dia, 16.76" pen & 10 g charges.

5769', 73', 89', 92', 96', 5800', 5', 7', 13', 16', 22', 26', 33', 43', 47', 50', 54', 58', 76', 80', 5900', 17',
 44', 80', 98'. Acidize w/ 1000 gal 15% HCl. Frac w/ 81,000# 20/40 AZ sand in 1921 bbls FW.

Mesaverde: Cliff House/ Menefee- (4735'-5728') 1 SPF 0.33" dia, 16.8" pen & 10 g charges.

4735', 4839', 46', 5080', 84', 5293', 5311', 5425', 79', 88', 5528', 32', 56', 83', 86', 88', 92', 5654', 58',
 63', 67', 69', 73', 77', 5707', 10', 13', 28'. Acidize w/ 1000 gal 15% HCl.

Frac w/ 79,000# 20/40 AZ sand in 1851 bbl FW.

Formations:

Ojo Alamo-	2642'	Gallup-	7097'
Kirtland-	2762'	Dakota-	7977'
Pictured Cliffs-	3352'		
Lewis-	3642'		
Cliff House-	5509'		
Menefee-	5558'		
Point Lookout-	5787'		
Mancos-	6127'		

Additional Notes:

2008- Mesaverde tubing repair. Bottom 12 joints full of frac sand. Tagged sand at 5900' sand running.
 Cleaned out to 6085', 20' fill overnight, clean out to 6085'. Land tubing.

7/7/2021- Commingle DK and MV production zones. Heavy sand in the MV above the packer.

Tagged 25' of fill in DK (likely contributed to by the MV sand falling through DK tubing string). Cleaned
 out to 8134'. Ran a single 2-3/8" tbg string, landed at 7989'.

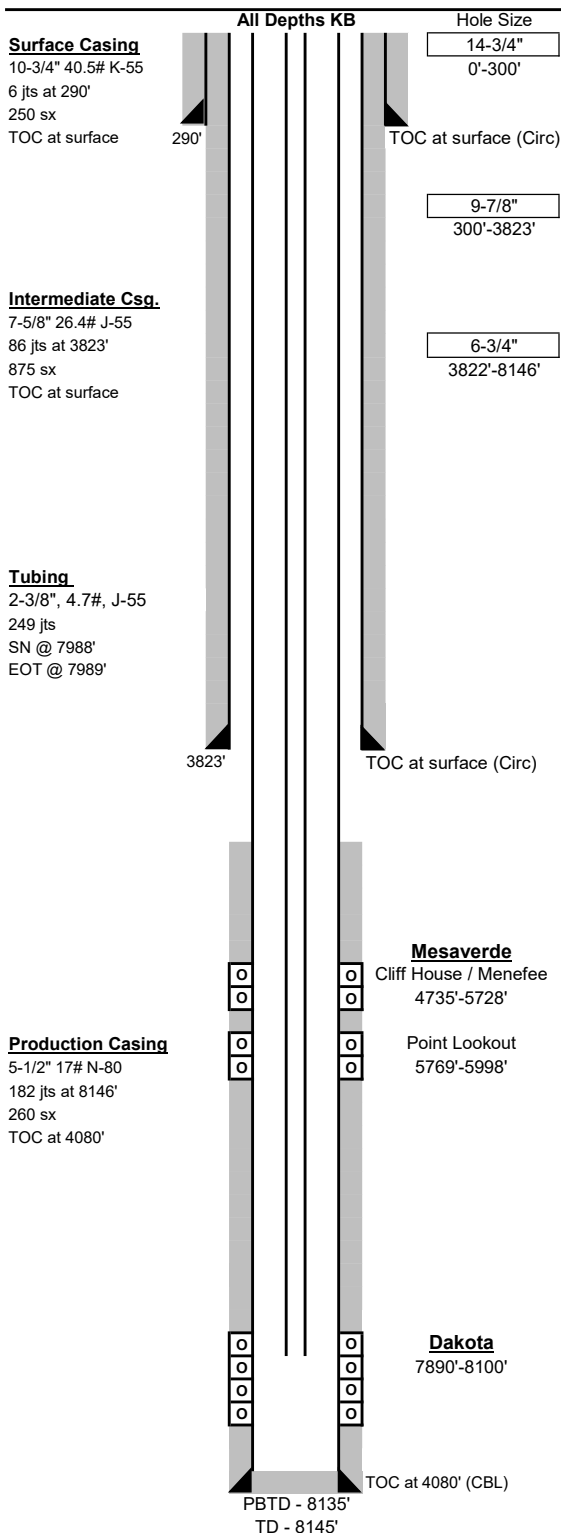
7/21/2023- Wellbore Isolation- Tagged fill at 8135'. Scanned tbg (222y, 14b, 6g, 7r). LD 74 joints and sent to
 Cave for storage. TIH w/ 5-1/2" Semi- CBP & pkr, set Semi-CBP @ 4695' & pkr @ 4664'. PT Semi-CBP, test
 leaked off. Released pkr, loaded well w/ 100bbls wtr, PT to 500psi for 10 mins, good test. TIH w/ TBG, landin
 4627". Circ pkr fluid in wellbore, PT second time for 30 mins, good test.

Max deviation 1 degree.

**Wellbore Schematic**

Well Name: Rosa Unit 24C
 Location: Sec 32, T31N, R05W 210' FNL & 1905' FWL
 County: Rio Arriba
 API #: 30-039-26968
 Co-ordinates: Lat 36.8627319°, -107.388176° NAD 83
 Elevations: GROUND: 6500'
 KB: 6514'
 Depths (KB): PBDT: 8135'
 TD: 8145'

Date Prepared: 12/4/2020 Gomez
 Reviewed by: 12/15/2020 Moss
 Spud Date: 6/26/2002
 Completion Date: 7/26/2002
 Last Workover Date: 7/7/2021
 Last Updated: 7/8/2021 Gomez

**Surface Casing: (6/26/2002)**

Drilled 14-3/4" surface hole to 300'. Ran 6 jts 10-3/4" 40.5# K-55 csg set at 290'.
 Cmt'd w/ 250 sx Type III RMS (350 cf). Circulated 13 bbls of cement to surface.

Intermediate Casing: (7/2/2002)

Drilled 9-7/8" intermediate hole to 3823'. Ran 86 jts 7-5/8" 26.4# J-55 csg set at 3823'.
 Cmt'd lead w/ 620 sx Type III 65/35 poz (1292 cf). Cmt'd tail w/ 255 sx Type III cmt (352 cf).
 Circulated 25 bbls of cement to surface.

Production Casing: (7/3/2002)

Drilled 6-3/4" production hole to 8146'. Ran 182 jts 5-1/2" 17# N-80 csg set at 8146'.
 Cmt'd w/ 30 sx Premium Lite HS (80 cf). Cmt tail w/ 230 sx Premium Lite HS (470 cf).
 TOC at 4080' CBL.

Tubing: (7/7/2021)

	Length (ft)
KB	14
(248) 2-3/8", 4.7#, J-55 tbg jnts	7940
(1) 2-3/8", 4.7#, J-55 tbg marker jt (2')	2
(1) 2-3/8", 4.7#, J-55 tbg jnt	32
(1) 1.78" Seat nipple	1
(1) Expendable check	1

Set at: 7989 ft

Perforations: (7/26/2002)

Dakota: (7890'-8100') 1 SPF, 0.46" dia, 22.12" pen & 19 g charges; Acid 500 gal 15% HCl.

7890', 82', 87', 7992', 95', 8028', 32', 34', 38', 41', 45', 62', 65', 68', 74', 8100'.

Frac w/ 4500# 100 mesh ahead, 85,240# 20/40 Ottawa sand, 5240# FLEX sand in 20Q foam.

Mesaverde: Point Lookout- (5769'-5998') 1 SPF, 0.33" dia, 16.76" pen & 10 g charges.

5769', 73', 89', 92', 96', 5800', 5', 7', 13', 16', 22', 26', 33', 43', 47', 50', 54', 58', 76', 80', 5900', 17', 44', 80', 98'. Acidize w/ 1000 gal 15% HCl. Frac w/ 81,000# 20/40 AZ sand in 1921 bbls FW.

Mesaverde: Cliff House/ Menefee- (4735'-5728') 1 SPF 0.33" dia, 16.8" pen & 10 g charges.

4735', 4839', 46', 5080', 84', 5293', 5311', 5425', 79', 88', 5528', 32', 56', 83', 86', 88', 92', 5654', 58', 63', 67', 69', 73', 77', 5707', 10', 13', 28'. Acidize w/ 1000 gal 15% HCl.

Frac w/ 79,000# 20/40 AZ sand in 1851 bbl FW.

Formations:

Ojo Alamo-	2642'	Gallup-	7097'
Kirtland-	2762'	Dakota-	7977'
Pictured Cliffs-	3352'		
Lewis-	3642'		
Cliff House-	5509'		
Menefee-	5558'		
Point Lookout-	5787'		
Mancos-	6127'		

Additional Notes:

2008- Mesaverde tubing repair. Bottom 12 joints full of frac sand. Tagged sand at 5900' sand running.

Cleaned out to 6085', 20' fill overnight, clean out to 6085'. Land tubing.

7/7/2021- Commingle DK and MV production zones. Heavy sand in the MV above the packer.

Tagged 25' of fill in DK (likely contributed to by the MV sand falling through DK tubing string). Cleaned out to 8134'. Ran a single 2-3/8" tbg string, landed at 7989'.

Max deviation 1 degree.

District I
1625 N. French Dr., Hobbs, NM 88240
Phone:(575) 393-6161 Fax:(575) 393-0720
District II
811 S. First St., Artesia, NM 88210
Phone:(575) 748-1283 Fax:(575) 748-9720
District III
1000 Rio Brazos Rd., Aztec, NM 87410
Phone:(505) 334-6178 Fax:(505) 334-6170
District IV
1220 S. St Francis Dr., Santa Fe, NM 87505
Phone:(505) 476-3470 Fax:(505) 476-3462

State of New Mexico
Energy, Minerals and Natural Resources
Oil Conservation Division
1220 S. St Francis Dr.
Santa Fe, NM 87505

CONDITIONS

Action 276494

CONDITIONS

Operator: LOGOS OPERATING, LLC 2010 Afton Place Farmington, NM 87401	OGRID: 289408
	Action Number: 276494
	Action Type: [C-103] NOI Workover (C-103G)

CONDITIONS

Created By	Condition	Condition Date
dmcclure	None	11/7/2023