

Office
 District I – (575) 393-6161
 1625 N. French Dr., Hobbs, NM 88240
 District II – (575) 748-1283
 811 S. First St., Artesia, NM 88210
 District III – (505) 334-6178
 1000 Rio Brazos Rd., Aztec, NM 87410
 District IV – (505) 476-3460
 1220 S. St. Francis Dr., Santa Fe, NM
 87505

State of New Mexico
 Energy, Minerals and Natural Resources

Form C-103
 Revised July 18, 2013

OIL CONSERVATION DIVISION
 1220 South St. Francis Dr.
 Santa Fe, NM 87505

WELL API NO. 30-015-34055
5. Indicate Type of Lease STATE <input type="checkbox"/> FEE <input checked="" type="checkbox"/>
6. State Oil & Gas Lease No.
7. Lease Name or Unit Agreement Name Tracy C 2
8. Well Number 443H
9. OGRID Number 372262
10. Pool name or Wildcat [98220] Purple Sage, Wolfcamp [Gas]

SUNDRY NOTICES AND REPORTS ON WELLS (DO NOT USE THIS FORM FOR PROPOSALS TO DRILL OR TO DEEPEN OR PLUG BACK TO A DIFFERENT RESERVOIR. USE "APPLICATION FOR PERMIT" (FORM C-101) FOR SUCH PROPOSALS.)	
1. Type of Well: Oil Well <input type="checkbox"/> Gas Well <input checked="" type="checkbox"/> Other	7. Lease Name or Unit Agreement Name Tracy C 2
2. Name of Operator SPC Resources, LLC	8. Well Number 443H
3. Address of Operator P.O. Box 1020, Artesia, NM 88210	9. OGRID Number 372262
4. Well Location Unit Letter <u>H</u> : <u>2469</u> feet from the <u>North</u> line and <u>440</u> feet from the <u>East</u> line Section <u>32</u> Township <u>21S</u> Range <u>27E</u> NMPM <u>Eddy</u> , <u>County</u>	10. Pool name or Wildcat [98220] Purple Sage, Wolfcamp [Gas]
11. Elevation (Show whether DR, RKB, RT, GR, etc.) 3119'	

12. Check Appropriate Box to Indicate Nature of Notice, Report or Other Data

NOTICE OF INTENTION TO:	SUBSEQUENT REPORT OF:
PERFORM REMEDIAL WORK <input type="checkbox"/> PLUG AND ABANDON <input type="checkbox"/> TEMPORARILY ABANDON <input type="checkbox"/> CHANGE PLANS <input type="checkbox"/> PULL OR ALTER CASING <input type="checkbox"/> MULTIPLE COMPL <input type="checkbox"/> DOWNHOLE COMMINGLE <input type="checkbox"/> CLOSED-LOOP SYSTEM <input type="checkbox"/> OTHER: <input type="checkbox"/>	REMEDIAL WORK <input type="checkbox"/> ALTERING CASING <input type="checkbox"/> COMMENCE DRILLING OPNS. <input type="checkbox"/> P AND A <input checked="" type="checkbox"/> CASING/CEMENT JOB <input type="checkbox"/> OTHER: <input type="checkbox"/>

13. Describe proposed or completed operations. (Clearly state all pertinent details, and give pertinent dates, including estimated date of starting any proposed work). SEE RULE 19.15.7.14 NMAC. For Multiple Completions: Attach wellbore diagram of proposed completion or recompletion.

SPC Resources is reporting the P&A plug back of the Tracy C Com 2 with the following operations:

- 8/20/22 - Cut tubing at 11,650' MD.
- 8/24/22 - Displace hole with 13.5 ppg kill mud and pull 2-3/8" tubing.
- 8/25/22 - Set CIBP at 11,640' MD – dump bail 100' of cement on top of CIBP. Set CIBP 10,922' MD.
- 8/26/22 - Ran CBL and found top of cement at 4875' MD
- 8/29/22 - Found 7" casing parted at 2962' MD.
- 8/31/22 - Pull 69 jts of 7" casing.
- 9/1/22 - Spot 25 sks of Class H cement on top of CIBP at 10,905' MD POOH 9300' to spot cement across liner top.
- 9/2/22 – Release work over crew and RDMO all equipment.
- 9/12/22 - Pump 100 sks of cement across 4-1/2" liner top. Attempt to pull tubing and tubing was stuck.
- 9/13/22 - Cut tubing 5' above the top of cement at 6715'.
- 9/14/22 - Pump 25 sks Class H cement plug from 5922' to 5822' – WOC 4 hrs – tag at 5800'.
- 9/14/22 - Pump 25 sks Class H cement plug from 5080' to 4980' – WOC 4 hrs – tag at 4934'.
- 9/15/22 - Attempt to perf top of 7" casing – could not get into 7" casing.
- 9/15/22 - Pump 250 sks Class H cement from 3200' to 2650' – WOC 6 hrs – tag at 2660' MD.
- 9/16/22 - SIW – leave production tree on well ready for side track operation.

Spud Date: 6/3/2005 Rig Release Date: 8/10/2005

I hereby certify that the information above is true and complete to the best of my knowledge and belief.

SIGNATURE [Signature] TITLE Vice President of Operations DATE 1/23/2023

Type or print name Lelan J Anders E-mail address: LAnders@SantoPetroleum.com PHONE: 575-736-3250

For State Use Only

APPROVED BY:

Accepted for record –NMOCD gc11/21/2023

DATE

Conditions of Approval (if any):

WELL: Tracy C 2 443H

WELL: Tracy C 2 443H

DAILY OPERATIONS			
FIELD:	Purple Sage, Wolfcamp Gas	Workover AFE Number	00351
COUNTY/STATE:	Eddy/New Mexico	TOTAL AFE:	\$0
PTD:			
LOCATION:	H-32-21S-27E 2469 FNL 440 FEL		
ELEVATION (RKB):			
API #:	30-015-34055		
SERIAL NO:			
SPUD DATE:			
OBJECTIVE:	Plug back from Morrow to BS1 for side track of 7" casing		
JOB NAME:	Prep for Drilling Rig		
CONTRACTOR/RIG#:	/		

Aug 17 2022	RIG SUPERVISOR:	Lelan J Anders	FW:	0.0
	PRESENT OPERATIONS:	Drive to location - line out valves to blow down tubing to tank. Open tubing with 1450 psi flowing pressure. Flow gas to tank till pressure reached 1000 psi 12:00. Open up tubing casing annulus to bleed down. No pressure gauge was on annulus - bleed down through 1/2" NPT from noon till 14:00. No change in flow. Remove 1/2" NPT valve and 2" coupling. Bleed well down through 2" valve from 14:15 to 18:30 - no pressure change seen. Flow tubing to tank until tubing went to 0 psi at 17:00.		
	DAILY JOB COST:	\$0	TOTAL JOB COST:	\$0
Aug 18 2022	RIG SUPERVISOR:	Benny Smith	FW:	0.0
	PRESENT OPERATIONS:	Drive to location, have safety meeting, SICP 1390psi, SITP 100psi, Spot reverse unit & open top tank w/ gas buster, Brigade WOU MI & spot, have dead man anchors tested (all tested good), frac tank rental set two 500bbl frac tanks & manifold together, mesquite trucking unload 1-load of 10# brine in open top gas buster & stand by w/ second load of 10# brine. Mesquite released @ 1200pm for the day, have second load of brine back in AM. @2030PM well has 20psi wide open to gas buster. Plugging supervisor watching well over night.		
	DAILY JOB COST:	\$0	TOTAL JOB COST:	\$0
Aug 19 2022	RIG SUPERVISOR:	Benny Smith	FW:	0.0
	PRESENT OPERATIONS:	Drive to location, have safety meeting, SICP 1390psi, SITP 100psi, Spot reverse unit & open top tank w/ gas buster, Brigade WOU MI & spot, have dead man anchors tested (all tested good), frac tank rental set two 500bbl frac tanks & manifold together, mesquite trucking unload 1-load of 10# brine in open top gas buster & stand by w/ second load of 10# brine. Mesquite released @ 1200pm for the day, have second load of brine back in AM. @2030PM well has 20psi wide open to gas buster. Plugging supervisor watching well over night.		
	DAILY JOB COST:	\$0	TOTAL JOB COST:	\$0
Aug 20 2022	RIG SUPERVISOR:	Benny Smith	FW:	0.0
	PRESENT OPERATIONS:	Drive to location, have safety meeting, SICP 20psi, SITP 0psi, Pump 315bbl 10# brine down csg to kill csg @ 2.5bpm 150psi, well pressured up to 200psi, SD pump & watch pressure. Pressure dropped to 40 psi in 1hr, open well to flow back tank blow down gas bubble, well is dead, ND production tree, tbq pick up weight 34-pts, NU 5k hydraulic BOP, worked tbq to unset PKR, unable to unset PKR, RU JSI WL & TIH w/ free point, Tbg shown to be free at @100% 6410', 50% free @ 6710', stuck at 8550', POOH w/ free point, PU & RIH w/ Chemical cutter to packer 11663', pick up to 11650', pull 68-pts into tbq & cut, tbq did not jump, POOH w/ WL, RU reverse unit to csg, pump 4bpm & start working tbq, pulled up to 72-pts & tbq came free, pull 10-stands, SWI, SDFD		
	DAILY JOB COST:	\$0	TOTAL JOB COST:	\$0
Aug 21 2022	RIG SUPERVISOR:	Benny Smith	FW:	0.0
	PRESENT OPERATIONS:	No Operations - well flowing to tank up casing.		
	DAILY JOB COST:	\$0	TOTAL JOB COST:	\$0

Aug 22 2022	RIG SUPERVISOR: Benny Smith	FW: 0.0
PRESENT OPERATIONS: Drive to location, have safety meeting, SICP 40psi, SITP 0psi, Pump 150bbl 10# brine, tbg started to circulate, SD SICP 380, SITP 80, let well set for 30min, tbg & csg dead, pull 4-stands & well started to flow, pumped 100bbl 10# brine, well pressured up to 480 on csg & 300 on tbg, flow back 43bbl 10# brine to open top pit w/ gas buster then turned to gas, (notified office) SD services ordered kill mud, leave well open to gas buster overnight, SDFD		
DAILY JOB COST: \$0		TOTAL JOB COST: \$0
Aug 23 2022	RIG SUPERVISOR: Benny Smith	FW: 0.0
PRESENT OPERATIONS: Drive to location, have safety meeting, SICP 0psi, SITP 0psi POOH w/ 206-jts 2 3/8" tbg,;WOU's Right angle drive broke, unable to continue POOH w/ tbg or TIH w/ tbg. Reverse pump will not start, Kill mud arrive on location, RD reverse pump, MI & RU WRH PZ-9 reverse pump, Roll mud in frac tank. leave well open to gas buster overnight, SDFD		
DAILY JOB COST: \$0		TOTAL JOB COST: \$0
Aug 24 2022	RIG SUPERVISOR: Benny Smith	FW: 0.0
PRESENT OPERATIONS: Drive to location, have safety meeting, SICP 0, SITP 0, Continue TIH w/ mill & scraper w/ 351-jts 2 3/8" tbg, 11640', POOH w/ mill & scraper, RU JSI WL & TIH w/ 4 1/2" CIBP set @ 11640', dump bail 50' class H cmt on top of CIBP, Run 2nd CIB & set @ 10922, POOH w/ WL, SWI SDFD Drive to location, wait on Brigade Mechanic, Mechanic replaced parts & bolts to RIGHT ANGLE DRIVE, WOU is operational, Pump 350bbl of 13# Calcium Carbonate Mud @ 2BPM 500psi, SWI & watch pressure, the pressure bleed off to 120psi, open tbg & bleed gas bubble to pit, csg pressure dropped to 40psi, open csg to pit & bleed down to 0psi, open BOP & POOH w/ remaining tbg, total jts 133-jts 2 3/8" tbg, lay down cut jt, PU WRH 3 1/2" mill & 4 1/2" CSG scraper, & TIH w/ 100-jts 2 3/8" tbg, SWI. SDFD BHA: Mill OD 3.5" ID 1" OAL 1.29' OX OD 2 15/16" ID19/16 OAL .94' CSG scraper OD 3 1/4" ID 1" OAL 2.65' XO 31/16 ID 1" OAL .70'		
ACTIVITY PLANNED: CBL from 9000' up to 4500'		
DAILY JOB COST: \$0		TOTAL JOB COST: \$0
Aug 25 2022	RIG SUPERVISOR: Benny Smith	FW: 0.0
PRESENT OPERATIONS: Drive to location, have safety meeting, SICP 0, SITP 0, Continue TIH w/ 3 1/2" Mill & 4 1/2" csg scraper to 11640' on 352-jts 2 3/8" tbg, POOH w/ scraper & mill, RU JSI WL & TIH w/ 4 1/2" CIBP to 11640' WL depth, set CIBP, POOH w/ baker 10 setting tool, PU dump bailer w/ extensions, TIH & dump bail cmt on top of CIBP, POOH w/ dump bailer, PU 2nd 4 1/2" CIBP & TIH to 10,922' & set, POOH w/ WL, SWI, prep to CBL in AM, SDFD		
DAILY JOB COST: \$0		TOTAL JOB COST: \$0
Aug 26 2022	RIG SUPERVISOR: Benny Smith	FW: 0.0
PRESENT OPERATIONS: Drive to location, have safety meeting, SICP 0, SITP 0, PU & RIH W/ JSI CBL, Log from top of liner up to 4000', RD WL, RIH open ended to 2960' tag solid, work tbg, unable to get pass spot, (notified office) POOH w/ tbg, found collar had marks on bottom due to obstruction in well bore, pick up 3 1/2" mill & TIH, tag at same place, SWI. SDFD		
DAILY JOB COST: \$0		TOTAL JOB COST: \$0
Aug 27 2022	RIG SUPERVISOR: Benny Smith	FW: 0.0
PRESENT OPERATIONS: Drive to location, have safety meeting, SICP 0, SITP 0, RU 2.5 power swivel, work through tight spot @ 2962' w/ 90-jts 2 3/8" tbg, POOH w/ BHA, PU & RIH w/ 6 1/8" flat bottom mill to tight spot make several runs through tight spot w/ tbg turning, unable to pass w/ tbg not turning, (notified office), call for a string/watermelon mill (6 1/8"), RD power swivel, lay down 2-jts 2 3/8" tbg, SWI, SDFD		
DAILY JOB COST: \$0		TOTAL JOB COST: \$0
Aug 29 2022	RIG SUPERVISOR: Benny Smith	FW: 0.0
PRESENT OPERATIONS: Drive to location, have safety meeting, SICP 20, SITP 0, blow down well, POOH w/ 6 1/8" mill, PU & RIH w/ 5 7/8" impression block, tag @ 2962', set 6-pts down, pulled 3-pts in to tbg to free, POOH w/ tbg & impression block, indication of csg parted, (notified office), SWI, SDFD Drive to location, have safety meeting, SICP 20, SITP 0, blow down well, POOH w/ 6 1/8" mill, PU & RIH w/ 5 7/8" impression block, tag @ 2962', set 6-pts down, pulled 3-pts in to tbg to free, POOH w/ tbg & impression block, indication of csg parted, (notified office), SWI, SDFD		
ACTIVITY PLANNED: Prep to Pull 7" csg		
DAILY JOB COST: \$8,150		TOTAL JOB COST: \$8,150
TOTAL WELL COST: \$8,150		

Aug 30 2022	MD: RIG SUPERVISOR: PRESENT OPERATIONS: DAILY JOB COST: TOTAL WELL COST:	TVD: \$4,575 \$12,725	FOOTAGE: Benny Smith SICP 100psi, SITP 0, TCB dig out around well head, Artesia field service removed bolts & installed new bolts to Brayden head. TOTAL JOB COST:	PTD: PBTD: \$12,725
Aug 31 2022	MD: RIG SUPERVISOR: PRESENT OPERATIONS: DAILY JOB COST: TOTAL WELL COST:	TVD: \$24,650 \$37,375	FOOTAGE: Benny Smith Drive to location, have safety meeting, SICP 1380psi, blow down well, Wait on csg crew, ND BOP, RU rotary csg jack spear 7" csg, hydraulic PU 90-pts, remove csg slips, stack out csg, release spear, RD csg jacks, NU 11" x 5K hydraulic BOP, spear back in to 7" csg, pick weight 73-pts, RU csg cew, POOH w/ 69-jts 7" csg laying down, SWI, SDFD TOTAL JOB COST:	PTD: PBTD: \$37,375
Sep 1 2022	MD: RIG SUPERVISOR: PRESENT OPERATIONS: DAILY JOB COST: TOTAL WELL COST:	TVD: \$0 \$37,375	FOOTAGE: Benny Smith Drive to location, have safety meeting, SICP 100psi, blow down well, ND 11" x 5K BOP, NU 7 1/16" x 5K BOP, PU & TIH w/ 3 1/2" flat bottom mill & TIH, work mill/tbg through 2962' (top of 7" csg), continue to 10922', RU Nextier cmt, pump 25sk of class H cmt mixed @ 16.4ppg, & displace w/ 42bbl, well would not balance, circulate cmt to surface w/ 450bbl fresh water, SWI, RD cmt, SDFD TOTAL JOB COST:	PTD: PBTD: \$37,375
Sep 12 2022	RIG SUPERVISOR: PRESENT OPERATIONS: WRH rolled mud at 2.5 bpm in frac tank for 4 hours. Sim-ops: Lucky's Well Service rig - spot in and rig up. ACTIVITY PLANNED: DAILY JOB COST: TOTAL WELL COST:	Benny Smith Role Mud Get new workover unit. \$0 \$37,375		FW: 0.0 TOTAL JOB COST: \$37,375
Sep 13 2022	RIG SUPERVISOR: PRESENT OPERATIONS: Drive to location, hold tailgate safety meeting. SICP=400 psi, SITP=100 psi. Finish RU of WOR Pick up on tubing and pull 10 pts over string wt tubing parted at surface - call for fishing tools. 5-3/8" overshot w/ 2-3/8" collar catch - latch on to fish by hand from surface. Pull tubing into slips, back off overshot. circulate well with 13# CaCO4 mud. RU WL and NexTier cement. Pump first plug 100 sks through tubing at 11905' MD. RIH w/ WL and tag cement at 6850' MD. POOH w/ WL to free point. RIH w/ free point, find 2-3/8" tubing free at 6720' MD. RIH w/ WL chemical cutter and cut tubing at 6715' MD. POOH w/ WL. Work tubing free - pull up to 80k over string weight to get tubing free. DAILY JOB COST: TOTAL WELL COST:	Benny Smith \$0 \$37,375		FW: 0.0 TOTAL JOB COST: \$37,375
Sep 14 2022	RIG SUPERVISOR: PRESENT OPERATIONS: Continue to pull out of the hole with 2-3/8" tubing. Lay down 40 jts of 2-3/8" tubing that was damaged. Call for Hydrostatic tubing testers and 30 stds of 2-3/8" tubing from Reno Equipment. Test tubing to 4500psi above the slips while tripping in to 5922' MD. No bad joints found while testing in hole. Pump 25 sks of Class H cement from 5922-5822'. Spot balanced plug, pull 5 stands - circulate clean w/ hole volume of 350 bbls. Wait on cement for 4 hours. GIH and tag cement at 5800' with 5 pts down. Pull up to 5080' MD pump 25 sks Class H plug. Spot plug from 5080' -4980' MD. Pull 5 stands and circulate hole volume of 300 bbls. Wait on cement 4 hours. RIH and tag cement at 4934' MD with 5 pts down. Start to POOH. DAILY JOB COST: TOTAL WELL COST:	Benny Smith \$0 \$37,375		FW: 0.0 TOTAL JOB COST: \$37,375

Sep 15 2022	RIG SUPERVISOR: Benny Smith	FW:	0.0
	PRESENT OPERATIONS:		
	Continue to pull out of the hole with tubing. RIH w/ WL to perforate 7" casing - could not get past 2448' MD. POOH w/ WL.		
	TIH w/ tubing open ended and work through tight spot at 2930' MD - work through tight spot at 2962' MD and continue to 3200' MD.		
	Pump 250 sks of Class H cement and spot cement at 3200'.		
	POOH - wait on cement for 6 hours. GIH to 2660' MD and tag cement with 5k down.		
	POOH with tubing laying down same.		
	DAILY JOB COST: \$0	TOTAL JOB COST:	\$37,375
	TOTAL WELL COST: \$37,375		
Sep 16 2022	RIG SUPERVISOR: Benny Smith	FW:	0.0
	PRESENT OPERATIONS:		
	Lay down all 2-3/8" tubing, release NexTier cementers, Rotary WL, and Lucky's Well Service rig.		
	RD all and clean and clear location. ND BOP's, Nipple up production tree, haul out all 13 ppg mud to commercial disposal.		
	Move out WRH PZ9 mud pump and open top tank. Remove all frac tanks from location.		
	DAILY JOB COST: \$0	TOTAL JOB COST:	\$37,375
	TOTAL WELL COST: \$37,375		

2001 - 2023 WellEz Information Management, LLC. All rights reserved

API #	30-015-34055	TRACY C COM 2	County, ST	Eddy County, NM
Operator	SPC Resources, LLC		Sec-Twn-Rng	H-32-21S-27E
Field	[73280] Burton Flat Morrow (Pro Gas)		Footage	2460 FNL, 440 FEL
Spud Date	6/2/2005		Survey	32.436915°, -104.204873°

Formation (MD)	
Delaware Sand	
Cherry Canyon	2711
Brushy Canyon	
Bone Springs	
First BS	5972
Second BS	6537
Third BS	7364
Wolfcamp	8715
Strawn	10440
Atoka	10670
Morrow	11395
Mississippian	

RKB	
GL	3098'
Surface Casing	
Hole Size	26"
TOC	surf
Method	Circ
Csg Depth	400'
Size	20"
Weight	
Grade	
Connections	
Cement	1220 sx

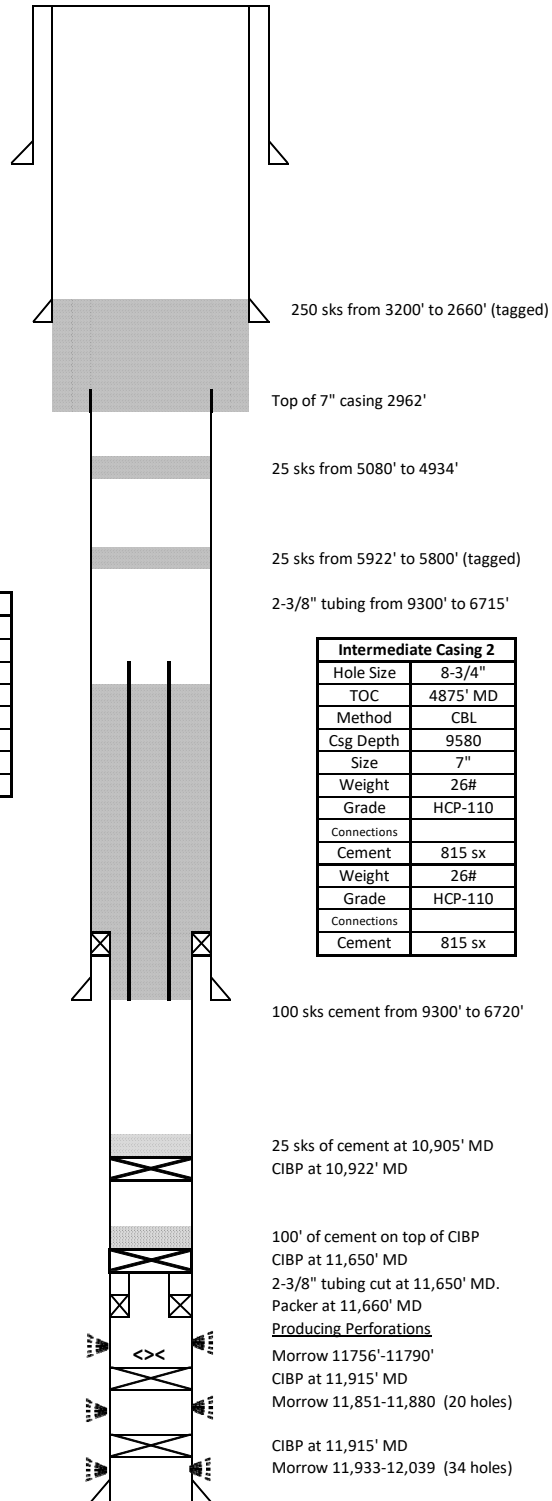
Intermediate Casing 1	
Hole Size	17-1/2"
TOC	surf
Method	circ returns
Csg Depth	2714'
Size	9-5/8"
Weight	40# & 36#
Grade	J-55
Connections	STC
Cement	1485 sx

Details	
All cement pumped in well Class H 16.4 ppg cement.	
Well was displaced with 13.5 ppg kill mud prior to pumping any cement.	

Production Liner	
Hole Size	6-1/4"
TOC	
Method	circ TOL
Csg Top	9258'
Csg Depth	12158'
Size	4-1/2"
Weight	11.6
Grade	P-110
Connections	LTC
Cement	285 sx

Last Update	1/23/2023
By	LJA

PBTD	11845'
TD MD	12161
TD TVD	



District I
1625 N. French Dr., Hobbs, NM 88240
Phone:(575) 393-6161 Fax:(575) 393-0720
District II
811 S. First St., Artesia, NM 88210
Phone:(575) 748-1283 Fax:(575) 748-9720
District III
1000 Rio Brazos Rd., Aztec, NM 87410
Phone:(505) 334-6178 Fax:(505) 334-6170
District IV
1220 S. St Francis Dr., Santa Fe, NM 87505
Phone:(505) 476-3470 Fax:(505) 476-3462

State of New Mexico
Energy, Minerals and Natural Resources
Oil Conservation Division
1220 S. St Francis Dr.
Santa Fe, NM 87505

CONDITIONS

Action 271930

CONDITIONS

Operator: SPC RESOURCES, LLC P.O. Box 1020 Artesia, NM 88211	OGRID: 372262
	Action Number: 271930
	Action Type: [C-103] Sub. Plugging (C-103P)

CONDITIONS

Created By	Condition	Condition Date
gcordero	None	11/21/2023