

Submit a Copy To Appropriate District  
Office  
District I – (575) 393-6161  
1625 N. French Dr., Hobbs, NM 88240  
District II – (575) 748-1283  
811 S. First St., Artesia, NM 88210  
District III – (505) 334-6178  
1000 Rio Brazos Rd., Aztec, NM 87410  
District IV – (505) 476-3460  
1220 S. St. Francis Dr., Santa Fe, NM  
87505

State of New Mexico  
Energy, Minerals and Natural Resources

Form C-103  
Revised July 18, 2013

OIL CONSERVATION DIVISION  
1220 South St. Francis Dr.  
Santa Fe, NM 87505

|   |    |
|---|----|
| WELL API NO.<br>30-025-05426  |    |
| 5. Indicate Type of Lease<br>STATE <input checked="" type="checkbox"/> FEE <input type="checkbox"/>   |    |
| 6. State Oil & Gas Lease No.  |    |
| 7. Lease Name or Unit Agreement Name<br>Lovington Paddock Unit  |    |
| 8. Well Number  | 51 |
| 9. OGRID Number<br>241333   |    |
| 10. Pool name or Wildcat<br>[40660] Lovington, Paddock  |    |
| 4. Well Location<br>Unit Letter <u>C</u> : <u>480</u> feet from the <u>NORTH</u> line and <u>3540</u> feet from the <u>EAST</u> line<br>Section <u>06</u> Township <u>17S</u> Range <u>37E</u> NMPM County <u>LEA</u> |    |
| 11. Elevation (Show whether DR, RKB, RT, GR, etc.)  |    |

12. Check Appropriate Box to Indicate Nature of Notice, Report or Other Data

NOTICE OF INTENTION TO:

PERFORM REMEDIAL WORK ☐ PLUG AND ABANDON ☐  
TEMPORARILY ABANDON ☐ CHANGE PLANS ☐  
PULL OR ALTER CASING ☐ MULTIPLE COMPL ☐  
DOWNHOLE COMMINGLE ☐  
CLOSED-LOOP SYSTEM ☐  
OTHER: ☐

SUBSEQUENT REPORT OF:

REMEDIAL WORK ☐ ALTERING CASING ☐  
COMMENCE DRILLING OPNS. ☐ P AND A ☒  
CASING/CEMENT JOB ☐  
OTHER: ☐

13. Describe proposed or completed operations. (Clearly state all pertinent details, and give pertinent dates, including estimated date of starting any proposed work). SEE RULE 19.15.7.14 NMAC. For Multiple Completions: Attach wellbore diagram of proposed completion or recompletion.

See attached plugging report and as plugged wellbore diagram.

Approved for plugging of well bore only. Liability under bond is retained pending Location cleanup & receipt of C-103Q (Subsequent Report of Well Plugging) which may be found at OCD Web Page, OCD Permitting @ [www.emnrd.state.nm.us](http://www.emnrd.state.nm.us)

Spud Date:

Rig Release Date:

I hereby certify that the information above is true and complete to the best of my knowledge and belief.

SIGNATURE Mark Torres TITLE Engineer DATE 11/21/2023

Type or print name Mark Torres E-mail address: marktorres@chevron.com PHONE: 989-264-2525

**For State Use Only**

APPROVED BY: [Signature] TITLE Staff Manager DATE 11/22/23

Conditions of Approval (if any):



P&A Operations Summary - External

|  |   |                                   |                                     |
|--|---|-----------------------------------|-------------------------------------|
| Well Name<br>LOVINGTON PADDOCK UNIT 051      | Field Name<br>Lovington   | Lease<br>Lovington Paddock Unit   | Area<br>Central Permian             |
| Business Unit<br>Mid-Continent               | County/ Parish<br>Lea   | Global Metrics Region<br>Lower 48 | Surface UWI<br>3002505426           |
| Basic Well Data                              |   |                                   |                                     |
| Current RKB Elevation<br>3,821.00, 8/23/2022 | Original RKB Elevation (ft)<br>3,821.00   | Latitude (°)<br>32° 52' 11.496" N | Longitude (°)<br>103° 17' 36.132" W |
| Daily Operations                             |   |                                   |                                     |
| Start Date                                   | Summary   |                                   |                                     |
| 8/23/2022                                    | Review JSA, check well for pressure, 180 PSI on production and 0 PSI on surface. Crew installed new risers on each string, broke concrete, and shut down until dirt could be delivered.   |                                   |                                     |
| 8/25/2022                                    | Review JSA, got dirt dumped on location, built pad over concrete pad and leveled location.  |                                   |                                     |
| 9/20/2022                                    | Moved WSU and cement equipment from LPU 100. Spot in equipment.   |                                   |                                     |
| 9/21/2022                                    | Rigged up WSU and cement equipment. Checked pressure's and bled down all strings. Circulate and kill well. N/D WH, N/U BOPE. Attempt to release TAC was unable to. Discussed results with engineer and recieved approval to leave packer in hole and set CIBP on top.   |                                   |                                     |
| 9/22/2022                                    | Checked pressure's 0 psi all strings. Finshed laying down 69 jts and on/off tool. MIRU WL and RIH with CIBP stacked out at 160'. Discussed results and recieved aproval from Kerry Fortner with NMOCD to spot cement open ended on packer. TIH tagged packer at 5993'. Spot 40 sx class C f/ 5993' t/ 5588'. Left EOT at 4100'.   |                                   |                                     |
| 9/23/2022                                    | Checked pressure's 0 psi all strings. Surface failed bubble test. TIH tagged cement at 5763'. Load and test casing 1000 psi 15 min. Circulate MLF. Spot 45 sx class C f/ 4650' t/ 4195'. Perf and squeeze 40 sx f/ 3882' t/ 3732'.  |                                   |                                     |
| 9/26/2022                                    | Checked pressure's and bled down all strings. Surface failed bubble test. TIH tagged cement at 3812'. Upgraded with 15 sx f/ 3812' t/ 3661'. Perforated at 2075' hit a gas pocket and shut in and monitored well built 250 psi 30 min. Bled down gas and well stayed dead monitored while waiting on WL. Perforated at 1975'. TIH with 5 1/2' AD1 packer set at 2000'. Attempt to circulate between perfs injected 8 bbls and pressured up to 1000 psi slow leak off. Attempt to reverse upper set of perfs holding 1000 psi. Lower set of perfs started flowing back saw gas and kill mud returns. Flowed down well. Discussed results with engineer and OCD decided to run cement retainer. |                                   |                                     |
| 9/27/2022                                    | Chcked pressure's and bled down all strings. Surface failed bubble test. Released packer and circulated gas out of well. Well continued to gas shut in well and monitored pressure for 30 min built 250 psi. Bled down gas head and well stayed static. TOH with packer and run cement retainer. Set retainer at 1945'. Squeeze 127 sx class C below retainer until pressured up to 1000 psi SIP 850 psi. Dumped 20 sx class C on top of retainer. WOC'd and tagged cement at 1851'. Spot 30 bbls MLF to 650'. Laid down tbq.   |                                   |                                     |
| 9/28/2022                                    | Checked pressure's production casing 0 psi surface casing 450 psi OL-LEL, 187-CO. N/D BOPE, N/U WH. RDMO.   |                                   |                                     |
| 12/3/2022                                    | Moved WSU and cement from LPU 46. MIRU. Ran CBL from 0-1850'.   |                                   |                                     |
| 12/5/2022                                    | Bubble tested all strings tested good. Load and test casing 1500 psi 15 min tested good. Perforated casing at 1180' and at 1080'. N/D WH, N/U BOPE. Pick up packer and set at 1105'. Attempt to circulate between perfs pressured up to 1000 psi no leak off. Spot 25 sx class C f/ 1230' t/ 977'.  |                                   |                                     |
| 12/6/2022                                    | Bubble tested alls trings. Surface failed bubble test 17-CO. Pressure test cemetrn plug 1000 psi tested good. TIH tagged cement at 917'. Spot MLF. Perforated at 380' adn 280' attempt to circulate across perfs was unable to circulate held 1500 psi. Recieved orders to RDMO. N/D BOPE, N/U WH. RDMO.  |                                   |                                     |
| 7/17/2023                                    | Knight P/U Valve, DSA & Spool, Travel to location, JSA, Held safety meeting, Hazard hunt, 0 psi on production csg, 0 psi on surface csg. ND well head flange, NU DSA, NU Frack vlave, NU spool, NU well head flange, CIW debrief.   |                                   |                                     |
| 7/18/2023                                    | RIH with 4.6 G/R W/junk basket tag @ 338', Work G/R no luck, POH, MU 4.5 G/R W/jink basket, RIH tag @338', Work G/R to 354', POH, Found 1 1/2" piece of rubber (Possible Element from Packer), RIH tag @354' work gauge ring got passed RIH to 550', POOH made passes by 354', MU 5.5 CIBP set @440', POH, MU 3 1/8" Circulation Charge' HMX 12 SPF (10' long), RIH perf from 430'-300', RIH gun did not go off, POOH, Load gun, CIW debrief.   |                                   |                                     |
| 7/19/2023                                    | MU 3 1/8" Circulation Charge' HMX 12 SPF (20' long), RIH perf from 300'-280' POOH, RD wireline, Move in spot CTU, Cement equip & TNT crane and set up, Secure loc debrief.  |                                   |                                     |
| 7/20/2023                                    | ND Spool, NU BOP & luricator, MU Acid Wash Tool, Attempt to test BOP and luricator, Coil TBG is plugged, RD CTU take to yard, CIW debrief.  |                                   |                                     |
| 7/21/2023                                    | Well safe drill   |                                   |                                     |
| 7/22/2023                                    | Spot CTU.   |                                   |                                     |
| 7/23/2023                                    | Pump 2.4 bbl full CT, NU lubricator, NU to BOP, Chart Test BOP, ND lubricator, MU wash tool, NU lubricator, Test lubracator, RIH depth meter stopped working, POOH zerow out & fix meter, Tag CIBP @446', Drop the ball, POOH to 214', Cups did not test, RIH pumping 2 BPM ball released, POOH to 240', Cups tested, Contact Kevin Cadale, CIW debrief..   |                                   |                                     |
| 7/24/2023                                    | Held safety meeting. Cup washed 5-1/2" 17# casing perforations from 280' - 397'. Tagged fill. Attempt to push. 30K. Pull 20K free. Poh. N/d cup tool and n/u bull nose. Shell pressure test. Can not get bullnose past well head  |                                   |                                     |
| 7/26/2023                                    | ND lubricator, Pull test Coil connector, MU 3-1/8" Mud Motor 4-1/2" jet mill with 1/8" jets, 90 degree, Test Pump & lines to 7000psi for 10min, TIH to 250', Engage pump, Pump could not keep up with PSI & rate, TOO, CIW debrief.   |                                   |                                     |
| 7/27/2023                                    | Test lubricator 250 psi 5 min & 2500psi 10min both held, RIH, Clean out with Mud Motor from 270'-430', with 710 bbl, Made continuous trips between 250'-430', POOH, ND Lubricator, Check mud motor, Install 3/8" jets, NU Lubricator and Test Lubricator 250psi 5 min & 2500psi 10min both held, Bebrief crew.  |                                   |                                     |
| 7/28/2023                                    | RIH, Clean out with 3-1/8" Mud Motor, Clean out the annulus between casings, Circulating 328 bbl , Made 11 trips fron 270'-430', Pump 10bbl gel sweep, Pump 5bbl Fresh, Pump 10 bbl Petrosol, POOH, ND Lubricator, Brake Mud motor, Make up Acid Wash Tool, NU Lubricator, Test Lubricator 250psi & 2500psi 10min each, Bebrief crew.   |                                   |                                     |
| 7/29/2023                                    | RIH, Test Casing with Acid Wash Tool while POOH, Stop and test every 2' from 429'-277', RIH to 429', Pump 34.5 sx class C from 429'-230', Circulate @230' with 15bbl with clean returns leaving TTOC @230', POOH, CIW debrief.  |                                   |                                     |
| 7/30/2023                                    | Pressure test Production casing 500 psi lost 40psi after 10 min, TIH tag TOC @231', POH, Pressure test production 875psi lost 150psi in 10min, N/D lubricator & BOP, R/D CTU & Pump, RD Crane, N/U wellhead, Bubble test passed in the production casing, Bubble test failed in the surface casing,   |                                   |                                     |
| 10/16/2023                                   | excavate, slope and break concrete, cut well, 235' low of cement panel and leave for rig.   |                                   |                                     |
| 10/22/2023                                   | JSA SWC SIF Review. MIRU Cementers. RIH with 1 inch PVC Pipe tagged at 231'. Place 30 SKS of Class C Cement from 230' to Surface. RDMO.   |                                   |                                     |
| 10/26/2023                                   | broke concrete all day.   |                                   |                                     |

## AS PLUGGED WELLBORE DIAGRAM

|             |                        |      |     |             |    |               |   |
|-------------|------------------------|------|-----|-------------|----|---------------|---|
| Created:    | 12/16/10               | By:  | PTB | Well #:     | 51 | St. Lse:      |   |
| Updated:    |                        | By:  |     | API:        |    | 30-025-05426  |   |
| Lease:      | Lovington Paddock Unit |      |     | Unit Ltr.:  | C  | Section:      | 6 |
| Field:      | Lovington Paddock      |      |     | TSHR/Rng:   |    | 17S 37E       |   |
| Surf. Loc.: | 480' FNL 3540' FEL     |      |     | Pool Code:  |    | OGRID:        |   |
| Bot. Loc.:  |                        |      |     |             |    |               |   |
| County:     | Lea                    | St.: | NM  | Directions: |    | Lovington, NM |   |
| Status:     | Active Injection Well  |      |     | Chevno:     |    | FA6553        |   |

## Surface Casing

Size: 8 5/8"  
 Wt., Grd.: 24 & 28#  
 Depth: 2025'  
 Sxs Cmt: 950  
 Circulate: yes  
 TOC: surface  
 Hole Size: 11"

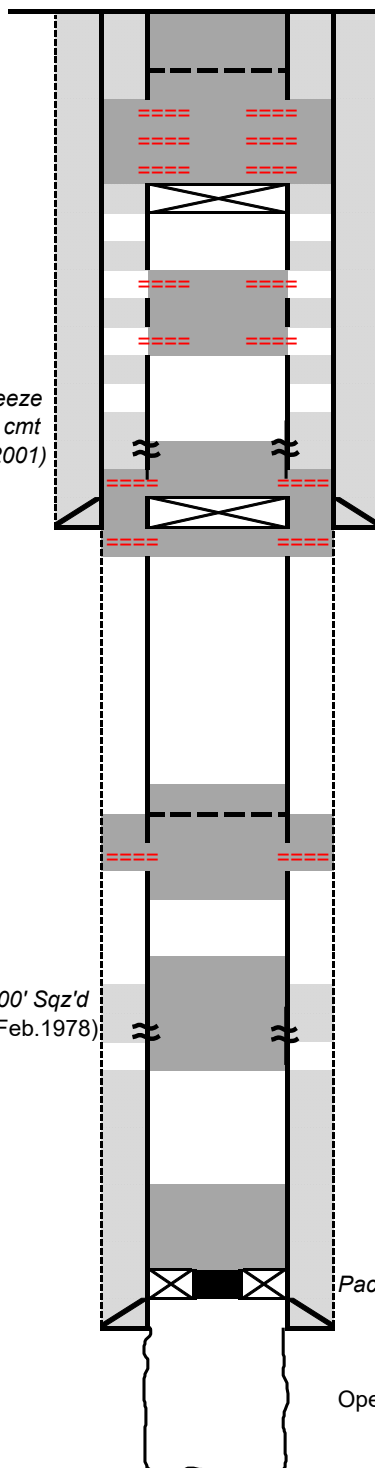
Perf @ 1,915' & 1,890'; squeeze  
 676 sx Class C; circ. cmt  
 to surface (Dec. 2001)

## Production Casing

Size: 5 1/2"  
 Wt., Grd.: 17#  
 Depth: 6080'  
 Sxs Cmt: 275  
 Circulate: no  
 TOC: 4,556' via CBL  
 Hole Size: 7 7/8"

Csg Lk 4570' - 4600' Sqz'd  
 w/ 75 sx (Feb. 1978)

KB: 3,821  
 DF: 3,820  
 GL: 3,811  
 Spud: 08/13/53  
 Fresh Water: 100'



10/22/23: Circulate 30 sx Class C f/ 230' - 0'

7/20-30/23: Wash perfs with Weatherford cup tool on  
 coiled tubing; circulate cement across perfs f/ 430' -  
 230' w/ 34.5 sx Class C. RD to monitor

7/18-19/23: Perf 5-1/2" csg 12 spf f/ 430' - 280'

7/18/23: Set CIBP @ 440'

12/5/22: Perf @ 1,180' & 1,080'; set pkr, unable to circ.  
 between perfs. Spot 25 sx Class C f/ 1,230' - 977'  
 Tag cmt @ 917'

12/3/22: Perform CBL on 5-1/2"; confirm cmt stringers

9/27/22: Set cmt retainer @ 1,945'; squeeze 127 sx  
 Class C below retainer and dump 20 sx on top  
 Tag cmt @ 1,850'

9/26/22: Perf @ 2,075' & 1,975'; set pkr @ 2,008' and  
 attempt to est. circ. behind pipe: no success

9/26/22: Spot add. 15 sx Class C f/ 3,812' - 3,661'

9/23/22: Perf @ 3,882'; spot & squeeze 58 sx  
 Class C f/ 3,882' - 3,447'; tag plug @ 3,812'

9/23/22: Spot 45 sx Class C f/ 4,650' - 4,195'

9/22/22: Release from On-Off Tool and Spot  
 40 sx Class C f/ 5,993' - 5,588'; tag plug @ 5,763'

Packer @ 6010' WITH 1.5" F" PROFILE NIPPLE

Open Hole Completion: 6080' - 6245' (San Andres)

**District I**  
1625 N. French Dr., Hobbs, NM 88240  
Phone:(575) 393-6161 Fax:(575) 393-0720

**District II**  
811 S. First St., Artesia, NM 88210  
Phone:(575) 748-1283 Fax:(575) 748-9720

**District III**  
1000 Rio Brazos Rd., Aztec, NM 87410  
Phone:(505) 334-6178 Fax:(505) 334-6170

**District IV**  
1220 S. St Francis Dr., Santa Fe, NM 87505  
Phone:(505) 476-3470 Fax:(505) 476-3462

State of New Mexico  
Energy, Minerals and Natural Resources  
Oil Conservation Division  
1220 S. St Francis Dr.  
Santa Fe, NM 87505

CONDITIONS

Action 287555

CONDITIONS

|  |  |
|--|--|
| Operator:<br>CHEVRON U S A INC<br>6301 Deauville Blvd<br>Midland, TX 79706 | OGRID:<br>4323                                 |
|  | Action Number:<br>287555                       |
|  | Action Type:<br>[C-103] Sub. Plugging (C-103P) |

CONDITIONS

| Created By | Condition | Condition Date |
|------------|-----------|----------------|
| gcordero   | None      | 11/22/2023     |