

Office  
 District I - (575) 393-6161  
 1625 N. French Dr., Hobbs, NM 88240  
 District II - (575) 748-1283  
 811 S. First St., Artesia, NM 88210  
 District III - (505) 334-6178  
 1000 Rio Brazos Rd., Aztec, NM 87410  
 District IV - (505) 476-3460  
 1220 S. St. Francis Dr., Santa Fe, NM  
 87505

State of New Mexico  
 Energy, Minerals and Natural Resources

Form C-103  
 Revised July 18, 2013

OIL CONSERVATION DIVISION  
 1220 South St. Francis Dr.  
 Santa Fe, NM 87505

<b>SUNDRY NOTICES AND REPORTS ON WELLS</b> (DO NOT USE THIS FORM FOR PROPOSALS TO DRILL OR TO DEEPEN OR PLUG BACK TO A DIFFERENT RESERVOIR. USE "APPLICATION FOR PERMIT" (FORM C-101) FOR SUCH PROPOSALS.) 1. Type of Well: Oil Well <input checked="" type="checkbox"/> Gas Well <input type="checkbox"/> Other <input type="checkbox"/>		WELL API NO. 30-025-02909 5. Indicate Type of Lease STATE <input checked="" type="checkbox"/> FEE <input type="checkbox"/> 6. State Oil & Gas Lease No.
2. Name of Operator Maverick Permian LLC		7. Lease Name or Unit Agreement Name East Vacuum (GSA) Unit 2801
3. Address of Operator 1000 Main Street, Suite 2900 Houston, TX 77002		8. Well Number 008
4. Well Location Unit Letter <u>M</u> : <u>660</u> feet from the <u>South</u> line and <u>660</u> feet from the <u>West</u> line Section <u>28</u> Township <u>17S</u> Range <u>35E</u> NMPM County <u>Lea</u>		9. OGRID Number 331199
11. Elevation (Show whether DR, RKB, RT, GR, etc.)		10. Pool name or Wildcat Vacuum; Grayburg - San Andres

12. Check Appropriate Box to Indicate Nature of Notice, Report or Other Data

NOTICE OF INTENTION TO:	SUBSEQUENT REPORT OF:
PERFORM REMEDIAL WORK <input type="checkbox"/>	REMEDIAL WORK <input type="checkbox"/>
TEMPORARILY ABANDON <input type="checkbox"/>	ALTERING CASING <input type="checkbox"/>
PULL OR ALTER CASING <input type="checkbox"/>	COMMENCE DRILLING OPNS. <input type="checkbox"/>
DOWNHOLE COMMINGLE <input type="checkbox"/>	CASING/CEMENT JOB <input type="checkbox"/>
CLOSED-LOOP SYSTEM <input type="checkbox"/>	
OTHER: <input type="checkbox"/>	OTHER: <input type="checkbox"/>

13. Describe proposed or completed operations. (Clearly state all pertinent details, and give pertinent dates, including estimated date of starting any proposed work). SEE RULE 19.15.7.14 NMAC. For Multiple Completions: Attach wellbore diagram of proposed completion or recompletion.

12/22/21 MIRU, dig out cellar. ND wellhead & NU BOP

12/23/21 RU equipment, set in and tally tbg. RIH open ended & tag BP 4100', circulate MLF and test csg. Good test. Mixed & spotted 50 sx class C cmt @ 4100' - 3600'. PU & spotted 40 sx class C cmt. @ 3182' - 2780', stand back 26 stands. secure well.

12/24/21 RIH and tag TOC @ 2750', stand back 26 stands and LD 47 jts, perforated @ 1623', ran 5 1/2" packer to 1200' and tried to establish injection rate, no circulation, mixed and squeezed 2/40 sx class C cmt @ 1623' - 1467', secured well and SDF Holiday

12/29/21 POOH w/ Pkr, RIH w/tbg tag TOC @ 1350', LD 20 jts, perfed @ 1350', established injection rate and pressured up, RIH w/ tbg and spotted 25 sx cmt, POOH LD 16 jts of tbg, WOC f/4 Hrs. Released pkr, LD 30 jts, RU WL and tag TOC @ 1098'. Perforated @ 292', ND BOP and flanged up 2' sub, mixed and circ cmt to surface.

12/30/21 Removed sub from top of wellhead and verified cmt to surface, RD Unit and equipment, moved unit to the East Vacuum (GSA) Unit 2622-041.

01/28/22 Dig out around wellhead, found wellhead still leaking.

03/04/22 Replace valves, RU Unit, install BOP, secure well.

3/7 - 3/21/22 - Drill out cement. Log Well. Circulate well, and LD WS. Run acoustic w/ temperature survey. RD

Spud Date:

Rig Release Date:

I hereby certify that the information above is true and complete to the best of my knowledge and belief.

SIGNATURE [Signature] TITLE Sr. Regulatory Analyst DATE 12/06/2023

Type or print name Lauri M. Stanfield E-mail address: Lauri.Stanfield@mavresources.com PHONE: 713-437-8052

**For State Use Only**

APPROVED BY: [Signature] TITLE Compliance Officer A DATE 12/19/23

Conditions of Approval (if any):

05/18/22 RU unit and equipment, held safety meeting w/ COP safety man David Whigham, dig out cellar, NU BOP, Secured well and SDFN

05/19/22 RU renegade WL, RIH w/ gamagun, junk basket and 4.5" gauge ring to 1305', RIH w/ 5 1/2" CIBP and set it @ 1305', POOH w/ WL, RIH and dump bail 30' of cmt with 2 runs, WOC f/ 4 hrs, RIH and tagged TOC @ 1275', POOH and PU guns. RIH and perfed at 1270', POOH and R/D WL, RIH w/ Pkr and would not go past 8' from Top of BOP. Called and ordered a casing scraper, RIH w/ scraper, scraper ran in just fine w/o hanging up. Tried to run in w/ Pkr again and would not go. Secured well and SDFN

05/20/22 RIH w/ 5 1/2" 23# Pkr to 1100' and set it. Pressure test annulus on top of Pkr and had fluid coming out of Tbg, did not hold, pressured up on tbg and held pressure. Could not squeeze, POOH w/ Pkr, RIH w/ WL and perfed w/ 2 shots @ 1270', RIH w/ Pk and set it @ 410', RU pump and tried to establish injection rate, PU to 1500 psi, cannot squeeze crew held H2S drill @ 1:15 pm. Secured well and SDFN.

05/23/22 Well pressure: 5 1/2" CP 5 psi, 7 5/8" CP - 20 psi, waited on renegade WL truck, RU Renegade WL truck, perfed @ 1140' w/ 24" 6 shot 6 cracken guns, RIH w/ Pkr to 410' and set it. RU pump and try to establish injection rate, Puto 2000' PSI, held pressure. No leak off, bled off pressure, POOH w/ Pkr, RU WL truck, perfed @ 1140' again w/ 24" 6 shot cracken guns, RIH w/ Pkr to 410' and set it. RU pump and try to establish injection rate, pressured up to 2000' psi, held pressure. No leak off, bled off pressure. POOH w/ Pkr, RU WL truck, perfed @ 1140' again w/ 24" 6 shot 6 cracken guns, RIH w/ Pkr to 410' and set it. RU pump and try to establish injection rate, PU to 2000' PSI. Held pressure, still no leak off, bled off pressure, POOH w/ Pkr, secured well and SDFN

05/24/22 RIH open ended to 1275', RU cudd acid truck and spotted 250 gal HCL, POOH w/tbg and ran back in hole w/ Pkr to 400', RU accid truck and begin to pump, broke down @ 1550 psi and pumped 30 bbls, unset Pkr and Rih to 1000', RU pump and begin missing and pumping Tendeka Material, mixed 73# w/73 bbls w/ 70 sx FW gel, mixed and spotted 60 sx cmt @ 1270' - 1100'. WOC F/2 hrs. RD WL truck and Cudd due to bad weather, secured well and SDFN

05/25/22 RIH w/ Tbg and tagged TOC @ 1071', perfed @ 1000' w/ 4 shots, RIH w/ Pkr to 410' to try and establish injection rate, could not squeeze, POOH w/ Pkr and RIH open ended to 1071' spotted 40 sx cmt @ 1071' - 671', POOH w/ Tbg RIH w/ Pkr and set it @ 410'. WOC f/ 4 hrs, POOH w/ Pkr, RIH w/ WL, and tagged TOC @ 698', PU and perfed w/ 4 shots @ 600', RIH and set Pkr @ 410' Established injection rate @ 1 BPM w/ 1500 psi, mixed and squeezed 50 sx cmt @ 600' x 500', secured well and SDFN

05/26/22 RU and pump and pressure test squeeze to 1000 psi. Held good, POOH w/ Pkr, RIH w/ WL and tagged TOC @ 416', Pulled up and perfed w/ 4 shots @ 400' RIH w/ Pkr and set it @ 192', Mixed and squeezed w/ 100 sx cmt @ 400' - 300'. WOC f/ 4 hrs. Held safety meeting w/ COP safety hand Rod Molina while WOC, RU pump and pressure test squeeze to 500 psi, held good. Crew held BOP drill, time 34 seconds, secured well and installed pressure gauges on csg valves.

05/27/22 POOH w/ Pkr, RIH open EDED and tagged TOC @ 270'. POOH w/ Tbg, RIH w/ Pkr, Looking hole in casing found hole right below slips on 5 1/2" csg. Held H2S drill while looking for hole in casing @ 9:30 am. Time 2 minutes 30 seconds. Installed 100# gauges on all three casings and will see if pressure will build up over the weekend, secured well and SDFN

05/31/22 Check pressure on well and all 3 csgs, had 0 pressure, POOH w/ Pkr perfed @ 270' w/ 1 shot, RIH W/ Pkr and 1 jnt, had an incident while rigging up 2" lines on rig floor, stopped operations and held safety mtg. RIH to 150' w/ 5 jts, mixed and squeezed 20 sx class C cmt through 5 1/2" csg, mixed and squeezed emt through 10 3/4" csg, squeezed 10 sx and locked up @ 800 psi, washed cement unit and equipment, secured well and SDFN



## EAST VACUUM GB-SA UNIT 2801-008

## Regulatory

Well Header				
API # 3002502909	State Drilling Permit #	Project EVGSAU	Region RG_SE_NEW_MEXICO	Area A_EVGSAU
Well Sub-Status PERMIAN-SE NEW MEXICO	Well Type Development	Well Status Suspended (I)	Well Lift Type N	Well Configuration Type VERTICAL
Spud Date 8/10/1939	KB Elevation (ft) 3,961.00	Ground Elevation (ft) 3,950.00	KB-Ground Distance (ft) 11.00	Total Depth (ftKB) 4,660.0

Daily Operations			
Rpt #	Start Date	End Date	Summary
1	12/21/2021	12/22/2021	PRE TRIP UNIT, MOVED UNIT AND EQUIPMENT TO LOCATION FOR P&A OPERATIONS, AOL, HSM & JSA, RIGGED UP UNIT AND EQUIPMENT, DIG OUT CELLAR, ND WELLHEAD AND NIPPLED UP BOP, SDFN.
2	12/22/2021	12/23/2021	CREW TO LOCATION, AOL AND HSM & JSA, FINISHED RIGGING UP EQUIPMENT, SET IN AND TALLIES TBG, RIH OPEN ENDED AND TAG BP @4100', CIRCULATE MLF AND TESTED CSG, GOOD TEST, MIXED AND SPOTTED 50 SX CLASS C CEMENT @4100-3600', PULLED UP AND SPOTTED 40 SX CLASS C CEMENT @3182'-2780', STAND BACK 26 STANDS, SECURED WELL AND SDFN.
3	12/23/2021	12/24/2021	CREW TO LOCATION, HSM & JSA, RIH AND TAG TOC @2750', STAND BACK 26 STANDS AND LD 47 JNTS, PERFORATED @1623', RAN 5 1/2" PACKER TO 1200' AND TRIED TO ESTABLISH INJECTION RATE, COULD NOT CIRCULATE, MIXED AND SQUEEZED W/ 40 SX CLASS C CEMENT @1623 - 1467', SECURED WELL AND SDF HOLLYDAY.
4	12/28/2021	12/29/2021	CREW TO LOCATION, HSM & JSA, POOH W/ PKR, RIH W/ TBG TAG TOC @ 1350', LD 20 JNTS, PERFORATED @1350, ESTABLISHED INJECTION RATE AND PRESURED UP, RIH W/ TBG AND SPOTTED 25 SX CEMENT, POOH LD 16 JNTS OF TBG, WOC F/4 HRS, RELEASED PKR, LD 30 JNTS, RU WL AND TAG TOC @1098', PERFORATED @292, ND BOP AND FLANGED UP 2' SUB, MIXED AND CIRC CEMENT TO SURFACE W/
5	12/29/2021	12/30/2021	CREW TO LOCATION, AOL HSM & JSA, REMOVED SUB FROM TOP OF WELLHEAD AND VERIFIED CEMENT TO SURFACE, RIGGED DOWN UNIT AND EQUIPMENT, MOVED UNIT TO THE EAST VACUUM SB-SA UNIT 2622-041.
6	1/28/2022	1/28/2022	DROVE TO LOCATION, HSM & JSA, DIG OUT AROUND WELLHEAD, FOUND WELLHEAD STILL LEAKING,
7	3/4/2022	3/4/2022	SAFETY MEETING/LOTO. REPLACE VALVES. RIG UP UNIT. INSTALL B.O.P. SECURE WELL.
8	3/7/2022	3/7/2022	SAFETY MEETING. DRILL OUT CEMENT.
9	3/8/2022	3/8/2022	SAFETY MEETING. DRILL OUT CEMENT
10	3/9/2022	3/9/2022	SAFETY MEETING. DRILL OUT CEMENT
11	3/10/2022	3/10/2022	SAFETY MEETING. DRILL OUT CEMENT
12	3/11/2022	3/11/2022	SAFETY MEETING. DRILL OUT CEMENT
13	3/14/2022	3/14/2022	SAFETY MEETING. DRILL OUT CEMENT
14	3/15/2022	3/15/2022	SAFETY MEETING. DRILL OUT CEMENT
15	3/16/2022	3/16/2022	SAFETY MEETING. DRILL OUT CEMENT
16	3/17/2022	3/17/2022	SAFETY MEETING. DRILL OUT CEMENT. LOG WELL.
17	3/18/2022	3/18/2022	SAFETY MEETING. CIRCULATE WELL, AND LAYDOWN WORKSTRING.
18	3/21/2022	3/21/2022	SAFETY MEETING. RUN ACOUSTIC WITH TEMPERATURE SURVEY. RIG DOWN.
19	5/18/2022	5/18/2022	PRE TRIP RIG, MOVED UNIT AND EQUIPMENT TO LOCATION, HSM & JSA, SPOT AND RIGGED UP UNIT AND EQUIPMENT, HELD SAFETY MEETING W/ COP SAFETY MAN DAVID WHIGHAM, DIG OUT CELLAR, NIPPLED UP BOP, SECURED WELL AND SDFN.
20	5/19/2022	5/19/2022	CREW TO LOCATION, CREW HSM & JSA W/ WIRELINE CREW, RIGGED UP RENEGADE WIRELINE, RIH W/ GAMAGUN, JUNK BASKET AND 4.5" GAUGE RING TO 1305', RIH W/ 5 1/2" CIBP AND SET IT @1305', POOH W/ WIRELINE, RIH AND DUMP BAIL 30' OF CEMENT WITH 2 RUNS, WOC F/4 HOURS, RIH AND TAGGED TOC @1275', POOH AND PICKED UP GUNS, RIH AND PERFORATED @1270', POOH AND R/D WIRELINE, RIH W/ PACKER AND WOULD NOT GO PAST 8' FROM TOP OF BOP, CALLED AND ORDERED AN CASING SCRAPER, RIH W/ SCRAPER, SCRAPER RAN IN JUST FINE WITHOUT HANGING UP, TRIED TO RUN IN W/ PACKER AGAIN AND WOULD NOT GO, SECURED WELL AND SDFN.
21	5/20/2022	5/20/2022	CREW TO LOC, HSM & JSA, RIH W/ 5 1/2" 23# PACKER TO 1100' AND SET IT, PRESSURE TEST ANNULUS ON TOP OF PACKER AND HAD FLUID COMING OUT OF TBG, DID NOT HOLD, PRESSURED UP ON TBG AND HELD PRESSURE, COULD NOT SQUEEZE, POOH W/ PACKER, RIH W/ WIRELINE AND PERFORATED W/ 2 SHOTS @1270', RIH W/ PACKER AND SET IT @410', RIGGED UP PUMP AND TRIED TO ESTABLISH INJECTION RATE, PRESSURED UP TO 1500 PSI, CANNOT SQUEEZE, CREW HELD H2S DRILL @1:15 PM, TIME 2 MINUTES 34 SECONDS, SECURED WELL AND SDFN,



## EAST VACUUM GB-SA UNIT 2801-008

## Regulatory

Well Header				
API # 3002502909	State Drilling Permit #	Project EVGSAU	Region RG_SE_NEW_MEXICO	Area A_EVGSAU
Well Sub-Status PERMIAN-SE NEW MEXICO	Well Type Development	Well Status Suspended (I)	Well Lift Type N	Well Configuration Type VERTICAL
Spud Date 8/10/1939	KB Elevation (ft) 3,961.00	Ground Elevation (ft) 3,950.00	KB-Ground Distance (ft) 11.00	Total Depth (ftKB) 4,660.0

Daily Operations			
Rpt #	Start Date	End Date	Summary
22	5/23/2022	5/23/2022	CREW TO LOCATION, HELD SAFETY MEETING AND JSA, WELL PRESSURE: 5 1/2" CP- 5 PSI, 7 5/8" CP - 20 PSI, WAITED ON RENEGADE WIRELINE TRUCK, RIGGED UP RENEGADE W/L TRUCK, PERFORATED @1140' W/ 24" 6 SHOT 6 CRACKEN GUNS, RIH W/ PACKER TO 410' AND SET IT, RIGGED UP PUMP AND TRY TO ESTABLISH INJECTION RATE, PRESSURED UP TO 2000' PSI, HELD PRESSURE, NO LEAK OFF, BLED OFF PRESSURE, POOH W/ PACKER, RIGGED UP W/L TRUCK, PERFORATED @1140' AGAIN W/ 24" 6 SHOT 6 CRACKEN GUNS, RIH W/ PACKER TO 410' AND SET IT, RIGGED UP PUMP AND TRY TO ESTABLISH INJECTION RATE, PRESSURED UP TO 2000' PSI, HELD PRESSURE, NO LEAK OFF, BLED OFF PRESSURE, POOH W/ PACKER, RIGGED UP W/L TRUCK, PERFORATED @1140' AGAIN W/ 24" 6 SHOT 6 CRACKEN GUNS, RIH W/ PACKER TO 410' AND SET IT, RIGGED UP PUMP AND TRY TO ESTABLISH INJECTION RATE, PRESSURED UP TO 2000' PSI, HELD PRESSURE, STILL NO LEAK OFF, BLED OFF PRESSURE, POOH W/ PACKER, SECURED WELL AND SDFN.
23	5/24/2022	5/24/2022	CREW TO LOCATION, HSM & JSA, RIH OPEN ENDED TO 1275', RIGGED UP CUDD ACID TRUCK AND SPOTTED 250 GAL HCL, POOH W/ TBG AND RAN BACK IN HOLE W/ PACKER TO 400', RIGGED UP ACID TRUCK AND BEGIN TO PUMP, BROKE DOWN @1550 PSI AND PUMPED 30 BBLS, UNSET PACKER AND RIH TO 1000', RIG UP PUMP AND BEGIN MIXING AND PUMPING TENDEKA MATERIAL, MIXED 73# W/ 73 BBLS W/ 60 SX FW GEL, MIXED AND SPOTTED 60 SX CMNT @1270' - 1100', WOC F/ 2 HOURS, RIGGED DOWN W/L TRUCK AND CUDD DUE TO BAD WEATHER, SECURED WELL AND SDFN.
24	5/25/2022	5/25/2022	CREW TO LOC, HSM & JSA, RIH W/ TBG AND TAGGED TOC @1071', PERFORATED @1000' W/ 4 SHOTS, RIH W/ PACKER TO 410' TO TRY AND ESTABLISH INJECTION RATE, COULD NOT SQUEEZE, POOH W/ PKR AND RIH OPEN ENDED TO 1071', SPOTTED 40 SX CMNT @1071' - 671', POOH W/ TBG RIH W/ PACKER AND SET IT @410', WOC F/ 4 HOURS, POOH W/ PACKER, RIH W/ WIRELINE AND TAGGED TOC @698', PULLED UP AND PERFORATED W/ 4 SHOTS @600', RIH AND SET PACKER @ 410', ESTABLISHED INJECTION RATE @1BPM W/ 1500 PSI, MIXED AND SQUEEZED 50 SX CMNT @600' - 500', SECURED WELL AND SDFN.
25	5/26/2022	5/26/2022	CREW TO LOCATION, HSM & JSA, RIGGED UP PUMP AND PESSURE TEST SQUEEZE TO 1000 PSI, HELD GOOD, POOH W/ PACKER, RIH W/ WIRELINE AND TAGGED TOC @416', PULLED UP AND PERFORATED W/4 SHOTS N@400', RIH W/ PACKER AND SET IT @192', MIXED AND SQUEEZED W/ 100 SX CMNT @400' - 300', WOC F/ 4 HOURS, HELD SAFETY MEETING W/ COP SAFETY HAND ROD MOLINA WHILE WOC, RIGGED UP PUMP AND PRSSURE TEST SQUEEZE TO 500 PSI, HELD GOOD, CREW HELD BOP DRILL, TIME 34 SECONDS, SECURED WELL AND INSTALLED PRESSURE GAUGES ON CASING VALVES.
26	5/27/2022	5/27/2022	CREW TO LOCATION, HSM & JSA, POOH W/ PACKER, RIH OPEN EDED AND TAGGED TOP OF CEMENT @270', POOH W/ TBG, RIH W/ PACKER LOOKING HOLE IN CASING, FOUND HOLE RIGHT BELOW SLIPS ON 5 1/2" CSG, HELD H2S DRILL WHILE LOOKING FOR HOLE IN CASING @9:30 AM, TIME 2 MINUTES 30 SECONDS, INSTALLED 100# GAUGES ON ALL THREE CASINGS AND WILL SEE IF PRESSURE WILL BUILD UP OVER THE WEEKEND, SECURED WELL AND SDFN.
27	5/31/2022	5/31/2022	CREW TO LOCATION, HSM & JSA, CHECK PRESSURE ON WELL AND ALL 3 CSGS HAD 0 PRESSURE, POOH W/ PACKER, PERFORATED @270' W/ 1 SHOT, RIH W/ PACKER AND 1 JNT, HAD AN INCIDENT WHILE RIGGING UP 2" LINES ON RIG FLOOR, STOPPED OPERATIONS AND HELD SAFETY MEETING, RIH TO 150' W/ 5 JNTS, MIXED AND SQUEEZED 20 SX CLASS C CEMENT THROUGH 5 1/2" CSG, MIXED AND SQUEEZED CEMENT THROUGH 10 3/4" CSG, SQUEEZED 10 SX AND LOCKED UP @800 PSI, WASHED CEMENT UNIT AND EQUIPMENT, SECURED WELL AND SDFN.



# EAST VACUUM GB-SA UNIT 2801-008

## Daily Workover Operations Detailed

Job - 12/21/2021  
Report #27

Well Header					
API # 3002502909	Division PERMIAN	Region RG_SE_NEW_MEXICO	Area A_EVGSAU		
Spud Date 8/10/1939	KB Elevation (ft) 3,961.00	Ground Elevation (ft) 3,950.00	KB-Ground Distance (ft) 11.00	Total Depth (ftKB) 4,660.0	
Well Sub-Status PERMIAN-SE NEW MEXICO	Well Type Development	Well Status Suspended (I)	Well Lift Type N	Well Configuration Type VERTICAL	

Tubing Strings & Components					
Tubing Description None	Weight/Length (lb/ft)	Set Depth (ftKB)	Run Date 5/26/2017	Wellbore MAIN HOLE	Pull Date

Pulled Rod String					
Rod Description Rod	Set Depth (ftKB) 4,594.0	Run Date 3/13/2015	Pull Date 5/24/2017	Pull Job ABANDONMENT T&A, 5/24/2017 09:00	Pull Reason Well uneconomic to operate

Rod Strings & Components					
Rod Description None	Set Depth (ftKB)	Weight/Length (lb/ft)	Run Date 5/24/2017	Wellbore MAIN HOLE	Pull Date
Item Des	Qty	Icon	OD (in)	Grade	Len (ft)
None					

Other in Hole Run (Bridge Plugs, etc)					
Run Date	Des	OD (in)	Top (ftKB)	Btm (ftKB)	Pull Date
9/17/2002 00:00	CIBP	4.8	4,104.0	4,107.0	1/13/2009 00:00
3/29/2010 00:00	FILL	4.8	4,623.0	4,660.0	
5/30/2017 10:00	Bridge Plug - Temporary	4.8	4,100.0	4,103.0	
12/22/2021 15:48	Cement Plug		3,600.0	4,100.0	
12/22/2021 15:48	Cement Plug		2,750.0	3,182.0	
12/28/2021 15:48	Cement Plug		0.0	292.0	3/14/2022 13:00
12/28/2021 15:48	Cement Plug		1,098.0	1,350.0	3/16/2022 14:00
3/17/2022 15:48	Cement Plug		1,500.0	1,623.0	3/16/2022 11:00
5/18/2022 11:00	Bridge Plug - Permanent	4.892	1,300.0	1,301.0	
5/18/2022 11:00	Cement Plug	4.892	1,270.0	1,300.0	
5/18/2022 11:00	Bridge Plug - Permanent	6.97	190.0	191.0	

Cement				
Start Date	Des	Type	String	Cement Comp
8/11/1939	Surface Casing Cement	Casing	Surface, 242.0ftKB	
8/14/1939	Intermediate Casing Cement	Casing	Intermediate, 1,573.0ftKB	
9/4/1939	Production Casing Cement	Casing	Production, 4,150.0ftKB	
1/9/2009	Cement Squeeze	Casing	Intermediate, 1,573.0ftKB	
12/22/2021	Cement Plug	Plug	Production, 4,150.0ftKB	
12/22/2021	Cement Plug	Plug	Production, 4,150.0ftKB	
12/23/2021	Cement Squeeze	Casing - Remedial	Production, 4,150.0ftKB	BCM
12/23/2021	Cement Plug	Plug	Production, 4,150.0ftKB	BCM
12/28/2021	Cement Plug	Plug	Production, 4,150.0ftKB	BCM
12/28/2021	Cement Squeeze	Casing - Remedial	Production, 4,150.0ftKB	BCM
12/28/2021	Cement Plug	Plug	Production, 4,150.0ftKB	BCM
5/18/2022	Cement Squeeze	Squeeze	Production, 4,150.0ftKB	BCM
5/18/2022	Cement Plug	Plug	Production, 4,150.0ftKB	BCM

Stimulations Summary					
Type Acidizing	Start Date 9/8/1939	End Date	Stim/Treat Company	# of S...	Comment

Stage					
Stage Number 1	Type Acidizing	Start Date 9/8/1939	End Date 9/8/1939	Top (ftKB) 4,260.0	Btm Depth (M...) 4,660.0

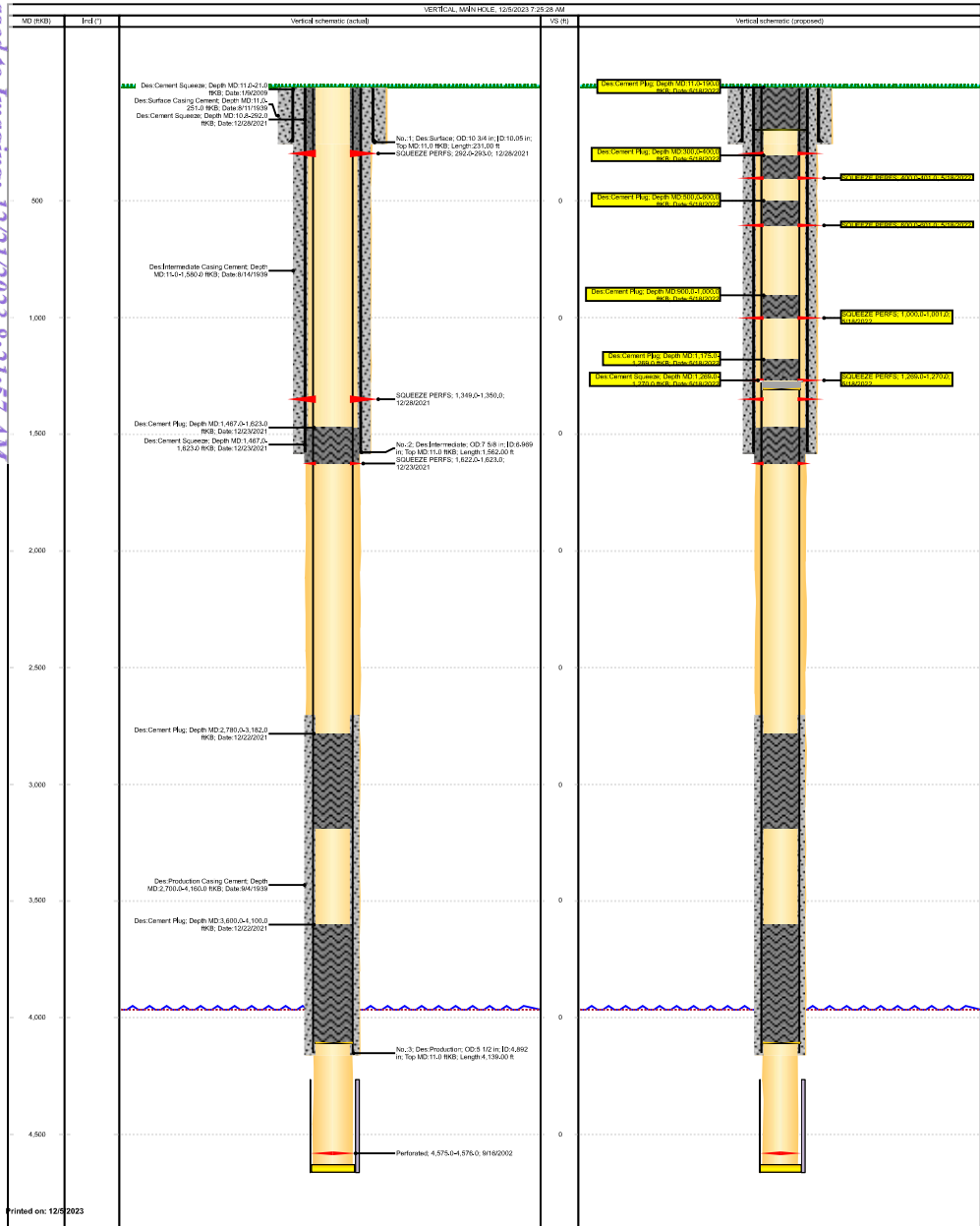
Swabs											
Date	Completion/Zone	Wellbore	Job	Swab Company	Comment						
Total Volume Recovered (bbl)		Total Gas Volume (MCF)			Total Oil Recovered (bbl)			Total BSW Recovered (bbl)			
Swab #	Start Date	Swab Time (hr)	P Tub (psi)	P Cas (psi)	T WH (°F)	Fdl Lvl (ftKB)	Pull Depth (ftKB)	Vol Recov (bbl)	Vol Gas (MCF)	Q Gas (MCF/day)	BS&W (%)
											Com





MAIN HOLE  
300250290900

KB: 11.00  
TD: 4,666.00



**District I**  
1625 N. French Dr., Hobbs, NM 88240  
Phone:(575) 393-6161 Fax:(575) 393-0720  
**District II**  
811 S. First St., Artesia, NM 88210  
Phone:(575) 748-1283 Fax:(575) 748-9720  
**District III**  
1000 Rio Brazos Rd., Aztec, NM 87410  
Phone:(505) 334-6178 Fax:(505) 334-6170  
**District IV**  
1220 S. St Francis Dr., Santa Fe, NM 87505  
Phone:(505) 476-3470 Fax:(505) 476-3462

**State of New Mexico**  
**Energy, Minerals and Natural Resources**  
**Oil Conservation Division**  
**1220 S. St Francis Dr.**  
**Santa Fe, NM 87505**

COMMENTS

Action 291945

COMMENTS

Operator: Maverick Permian LLC 1000 Main Street, Suite 2900 Houston, TX 77002	OGRID: 331199
	Action Number: 291945
	Action Type: [C-103] Sub. Plugging (C-103P)

COMMENTS

Created By	Comment	Comment Date
plmartinez	DATA ENTRY PM.	12/21/2023

**District I**  
1625 N. French Dr., Hobbs, NM 88240  
Phone:(575) 393-6161 Fax:(575) 393-0720  
**District II**  
811 S. First St., Artesia, NM 88210  
Phone:(575) 748-1283 Fax:(575) 748-9720  
**District III**  
1000 Rio Brazos Rd., Aztec, NM 87410  
Phone:(505) 334-6178 Fax:(505) 334-6170  
**District IV**  
1220 S. St Francis Dr., Santa Fe, NM 87505  
Phone:(505) 476-3470 Fax:(505) 476-3462

State of New Mexico  
Energy, Minerals and Natural Resources  
Oil Conservation Division  
1220 S. St Francis Dr.  
Santa Fe, NM 87505

CONDITIONS

Action 291945

CONDITIONS

Operator: Maverick Permian LLC 1000 Main Street, Suite 2900 Houston, TX 77002	OGRID: 331199
	Action Number: 291945
	Action Type: [C-103] Sub. Plugging (C-103P)

CONDITIONS

Created By	Condition	Condition Date
kfortner	Need C103Q and marker photo to release	12/20/2023