

U.S. Department of the Interior
BUREAU OF LAND MANAGEMENT

Well Name: SAN JUAN 30-5 UNIT

Well Location: T30N / R5W / SEC 17 /
NWSW / 36.809143 / -107.385712

County or Parish/State: RIO
ARRIBA / NM

Well Number: 47

Type of Well: CONVENTIONAL GAS
WELL

Allottee or Tribe Name:

Lease Number: NMSF078994

Unit or CA Name: SAN JUAN 30-5
UNIT--DK

Unit or CA Number:
NMNM78419B

US Well Number: 3003921070

Well Status: Abandoned

Operator: HILCORP ENERGY
COMPANY

Subsequent Report

Sundry ID: 2765412

Type of Submission: Subsequent Report

Type of Action: Plug and Abandonment

Date Sundry Submitted: 12/11/2023

Time Sundry Submitted: 10:16

Date Operation Actually Began: 11/16/2023

Actual Procedure: Hilcorp Energy Company has plugged and abandoned the subject well on 12/9/2023 per the attached report.

SR Attachments

Actual Procedure

SJ_30_5_UNIT_47_SR_20231211101547.pdf

Well Name: SAN JUAN 30-5 UNIT

Well Location: T30N / R5W / SEC 17 /
NWSW / 36.809143 / -107.385712County or Parish/State: RIO
ARRIBA / NM

Well Number: 47

Type of Well: CONVENTIONAL GAS
WELL

Allottee or Tribe Name:

Lease Number: NMSF078994

Unit or CA Name: SAN JUAN 30-5
UNIT--DKUnit or CA Number:
NMNM78419B

US Well Number: 3003921070

Well Status: Abandoned

Operator: HILCORP ENERGY
COMPANY**Operator**

I certify that the foregoing is true and correct. Title 18 U.S.C. Section 1001 and Title 43 U.S.C. Section 1212, make it a crime for any person knowingly and willfully to make to any department or agency of the United States any false, fictitious or fraudulent statements or representations as to any matter within its jurisdiction. Electronic submission of Sundry Notices through this system satisfies regulations requiring a

Operator Electronic Signature: PRISCILLA SHORTY

Signed on: DEC 11, 2023 10:16 AM

Name: HILCORP ENERGY COMPANY

Title: Regulatory Technician

Street Address: 382 ROAD 3100

City: AZTEC

State: NM

Phone: (505) 324-5188

Email address: PSHORTY@HILCORP.COM

Field

Representative Name:

Street Address:

City:

State:

Zip:

Phone:

Email address:

BLM Point of Contact

BLM POC Name: MATTHEW H KADE

BLM POC Title: Petroleum Engineer

BLM POC Phone: 5055647736

BLM POC Email Address: MKADE@BLM.GOV

Disposition: Accepted

Disposition Date: 12/11/2023

Signature: Matthew Kade

SAN JUAN 30-5 UNIT 47

30.039.21070

PLUG AND ABANDON

11/16/2023 – CHECK PSI ON WELL SITP 0#, SICP 0#, SIICP 560#, BH 50#, BDW 8 MIN. ND WH, NU BOP, PT & FUNCTION TEST BOPS. RU RIG FLOOR. PULL TBG HANGER @ 45K SW, TRY TO WORK PROD TBG FREE TO 60K SW MAX. PUMP DOWN BACKSIDE & UP TBG 40 BBLs BUT PRESSURED UP TO 800 PSI. **HEC ENGINEER SENT EMAIL REQUESTING TO JET CUT TBG @ 7,790'. KENNETH RENNICK, BLM, AND MONICA KUEHLING, NMOCD, APPROVED THE PROPOSAL.** RU WIRELINE, RIH W/ 1.75" GR TO 7,900 LD GR. LOAD TBG W/ FW. RIH W/ JET CUTTER TO 7,788' DO TO COLLAR @ 7,790' AND CUT. POOH & RD WIRELINE. PULL SW OF 60,000. DIDN'T COME FREE. SDFN.

11/17/2023 – CHECK PSI ON WELL SITP 0#, SICP 10#, SIICP 20#, BH 40#, BDW 1 MIN. RU WIRELINE. MU FREE POINT TOOL @ RIH TO 5,020 CALIBRATE TOOL. PULL TENSION 100% FREE, RIH TO 7,604, 4% FREE. BACK TRACK UP TO 7,263' & CUT 2.375" TBG @ DEPTH. POOH. RD WIRELINE. PULL TBG TO 26,000 SW. LD 229 JTS OF 2.375" 4.7# J-55 PROD TBG & CHEMICAL CUT JT. SDFWE.

11/20/2023 - CHECK PSI ON WELL SITP 0#, SICP 0#, SIICP 50#, BH 30#, BDW 1 MIN. FINISH PU 2.375" TBG. TALLY, STRAP & RABBIT TBG TO TOP OF FISH @ 7,263'. TIE BACK DRILL LINE. TIE ONTO FISH W/ OVERSHOT & 2-3/8" GRAPPLER @ 7,320'. FISH WAS ALMOST 60' LOWER THAN 7,263'. JARRED OUT OF 45' OF 2.375" PROD TBG. EST TOF @ 7,275'. TRY TO PUMP DOWN CSG UP TBG, NO CIRC PRESSURE UP TO 500 PSI. NO MORE PROGRESS ON JARRING OPS. TOO H 24 STDs OF 2.375" TBG. **HEC ENGINEER SENT KENNETH RENNICK, BLM, AND MONICA KUEHLING, NMOCD, AN UPDATE ON FISHING OPS.** SDFN.

11/21/2023 - CHECK PSI ON WELL SITP 0#, SICP 0#, SIICP 60#, BH 30#, BDW 1 MIN. TOO H 93 STDs OF 2.375" TBG. LD FISHING TOOLS. RU WIRELINE, RIH W/ 4-1/2" GR & TAG @ 7,240'. LD GD. RUN CBL FROM 7240' TO SURFACE. **HEC ENGINEER PROVIDED UPDATES OF FISHING JOB AND SENT CBL TO KENNETH RENNICK, BLM, AND MONICA KUEHLING, NMOCD. THEY APPROVED THE PROPOSAL TO START CEMENTING OPS.** TIH TO 7,240'. LW 3 BBLs PUMP 115 BBLs FW TO CIRC WELL CLEAN. SDFN.

11/22/2023 - CHECK PSI ON WELL SITP 0#, SICP 0#, SIICP 20#, BH 20#, BDW 1 MIN. CHECK 4-1/2" PROD & 7" INT CSG FOR COMMUNICATION. PT INT CSG TO 560 PSI & FAILED. **CEMENT PLUG #1 (COVER TOF) 13 SX 3.1BBL, 1.37, 14.8#, 6.64 GAL/SX. DISPLACE 27.2 BBL. BOC @ 7,240'. BLM REP DUSTIN PORCH ON LOCATION.** TOO H. MU 4-1/2" PKR, RIH SET @ 400' DEPTH. PT BACKSIDE FROM 400' TO SURF. PT GOOD @ 560 PSI. TEST @ 1,000'-3,000' PT GOOD TO 560 PSI. GOOD TEST. CIRC UP 7" CSG @ 4,395'. PT FROM 4,395' TO 7,040' @ 560 PSI FOR 15 MINS. GOOD TEST. HOLE AROUND 4,395'. **HEC ENGINEER NOTIFIED BLM AND MONICA KUEHLING, NMOCD, OF THE HIC BEING AT ~4,395, A HISTORICAL SQZ INTERVAL. BLM REP & NMOCD APPROVED PT TO NOT WOC FIRST 4 CMT PLUGS SINCE LEAK WAS FOUND IN 4-1/2" CSG.** TOO H & LD PKR. SD FOR HOLIDAY.

11/25/2023 - CHECK PSI ON WELL SITP 0#, SICP 0#, SIICP 30#, BH 30#, BDW 1 MIN. TIH AND TAG **CEMENT PLUG #1 @ 7,058'. CEMENT PLUG #2 (GALLUP TOP) 10 SX 2.3 BBL, 1.37, 14.8#, 6.64 GAL/SX. TOC @ 6,624', BOC @ 6,774'. DISPLACE 25.6 BBL. CEMENT PLUG #3 (MANCOS TOP) 10 SX 2.3 BBL, 1.37, 14.8#, 6.64 GAL/SX. TOC @ 5,799', BOC @ 5,949'. DISPLACE 22.4 BBL. CEMENT PLUG #4 (CLIFFHOUSE TOP) 10 SX 2.3 BBL, 1.37, 14.8#, 6.64 GAL/SX. TOC @ 5,319', BOC @ 5,469'. DISPLACE 20.5 BBL. CEMENT PLUG #5 (CHACRA TOP) 10 SX 2.3 BBL, 1.37, 14.8#, 6.64 GAL/SX. TOC @ 4,358', BOC @ 4,508'. DISPLACE 16.8 BBL. DUSTIN PORCH, BLM, ON LOCATION.** TOO H. RU WIRELINE, RIH & PERF SQUEEZE HOLES @ 3,617'. POOH & RD WIRELINE. MU 4-1/2" CIRC, TIH TO 3,567', SET @ DEPTH. LW 3 BBLs. COULD NOT GET INJECTION RATE. **HEC ENGINEER SENT AN EMAIL TO KENNETH RENNICK, BLM, AND**

SAN JUAN 30-5 UNIT 47

30.039.21070

PLUG AND ABANDON

MONICA KUEHLING, NMOCD, PROVIDING UPDATES ON CEMENT PLUGS AND PROPOSING TO SPOT 150' CMT ON TOP OF CIRC FROM 3,467'-3,567'. SDFN.

11/26/2023 - CHECK PSI ON WELL SITP 0#, SICP 0#, SIICP 0#, BH 0#, BDW 0 MIN. **CEMENT PLUG #6 (7" SHOE) 10 SX 2.3 BBL, 1.37, 14.8#, 6.64 GAL/SX. DISPLACE 13.2 BBL. BOC @ 3,567'. DUSTIN PORCH, BLM, ON LOCATION. TOO. WOC. TIH & TAG CEMENT PLUG #6 @ 3445'. TOO. RU WIRELINE, RIH & PERF SQUEEZE HOLES @ 3,240'. POOH & RD WIRELINE. HEC SENT KENNETH RENNICK, BLM, AND MONICA KUEHLING, NMOCD, AN EMAIL PROPOSING TO SETTING CIRC @ 3190', CIRC AND SPOT CEMENT PLUG. TIH TO 3,190'. SET @ DEPTH. INJECTION RATE UNDER CIRC, CIRC OUT 7" INT. PT 600 PSI & FAILED. CEMENT PLUG #7 (PC & FRD TOP) 47 SX 11.4 BBL, 1.37, 14.8#, 6.64 GAL/SX. 17 SX ABOVE AND 30 SX BELOW CIRC. BOC @ 3,240' DISPLACE 11.3 BBL. TOO. WOC OVERNIGHT. SDFN.**

11/27/2023 - CHECK PSI ON WELL SITP 0#, SICP 0#, SIICP 10#, BH 15#, BDW 1 MIN. TIH & TAG **CEMENT PLUG #7 @ 2811'. PT 2-1/2" CSG TO 560 PSI & PASSED. TIE ONTO 7" CSG LOAD 5 BBL, PT 300 PSI & PASSED. TOO. HEC ENGINEER SENT KENNETH RENNICK, BLM, AND MONICA KUEHLING, NMOCD, AN EMAIL PROPOSING TO PERF @ 2,770', SET CIRC @ 2,720', AND PLACING PLUG #8 FROM 2,670'-2,770'. RU WIRELINE, RIH & PERF 6 SQUEEZE HOLES @ 2,770'. POOH & RD WIRELINE. TIH AND SET CIRC @ 2,720'. INJECTION RATE UNDER CIRC, CIRC OUT 7" INT. CEMENT PLUG #8 (FRD TOP) 16 SX 3.9 BBL, 1.37, 14.8#, 6.64 GAL/SX. 3 SX ABOVE AND 13 SX BELOW CIRC. BOC @ 2,770'. DISPLACE 10.1 BBL. TOO. WOC. TIH & TAG CEMENT PLUG #8 @ 2,660'". TOO. BLM REP DUSTIN PORCH ON LOCATION. SDFN.**

11/28/2023 - CHECK PSI ON WELL SITP 0#, SICP 0#, SIICP 10#, BH 14#, BDW 1 MIN. NMOCD REQUESTED TO MONITOR BH OVER THE NEXT 48 HRS. GAS SAMPLES WERE REQUESTED. PLAN ON MOVING OFF LOCATION WHILE BH PRESURE IS BEING MONITORED. RD FLOOR, ND BOP, NU WH. **NOTIFIED MONICA KUEHLING, NMOCD, AND BLM OF RIG MOVE. RD RR @ 15:30 PM, 11/28/2023.**

11/30/2023 – THE BH PRESSURE OF 6 PSI AFTER A 24-HR SHUT-IN WAS REPORTED TO NMOCD AND BLM. GAS SAMPLES WERE TAKEN.

12/4/2023 – GAS SAMPLE RESULTS WERE SUBMITTED IN OCD PERMITTING, ACTION ID 290783. **HEC ENGINEER SENT NMOCD AND BLM A PROPOSAL TO MONITOR BH PRESSURES DURING THE ROSA MESA CLOSURE MONTHS. MONICA KUEHLING, NMOCD, REQUESTED ANOTHER 24-HR SHUT-IN BH PRESSURE.**

12/5/2023 – THE BH PRESSURE OF 2 PSI WAS REPORTED TO NMOCD. **MONICA KUEHLING, NMOCD, APPROVED TO MOVE BACK ON AND PLUG THE WELL.**

12/6/2023 - **VERBAL APPROVAL FROM BLM'S RYAN MCBEE AND JEFF TAFOYA TO MOVE BACK DURING CLOSURE TO FINISH THE P&A. HEC ENGINEER SENT A PROPOSAL FOR THE REMAINING PLUGS. MATTHEW KADE, BLM, APPROVED THE PROPOSED PLAN.**

12/7/2023 – MIRU. CHECK PSI ON WELL SITP 0#, SICP 0#, SIICP 10#, BH 0#. ND WH. NU BOP. PT & FUNCTION TEST BOPS, RU RIG FLOOR. RU WIRELINE, RIH & PERF 6 SQUEEZE HOLES @ 2,660'. POOH & RD WIRELINE. LW 3 BBL, CIRC OUT 7" CSG. SHUT IN, NO INJECTION RATE. PRESSURE UP TO 800 PSI. **RECEIVED BLM & NMOCD APPROVAL TO CEMENT 4-1/2" & 7" WITH BALANCE PLUG OF 150'. RIH TO 2510' TO SQUEEZE CMT DOWN 4-1/2" CSG THROUGH PERFS @ 2,660' & CIRC CMT UP 7" CSG TO 2,510'. CEMENT PLUG #9 (OJO TOP) 23 SX 5.6 BBL, 1.37, 14.8#, 6.64 GAL/SX. TOC @ 2,510', BOC @ 2,660'. 13**

SAN JUAN 30-5 UNIT 47

30.039.21070

PLUG AND ABANDON

SXS INSIDE 7" & 10 SXS INSIDE 4-1/2" CSG. BOC @ 2,660' DISPLACE 9.7 BBLS. LD 1 JTS & R/O 20 BBLS. TOOH. WOC OVERNIGHT. SDFN.

12/8/2023 - CHECK PSI ON WELL SITP 0#, SICP 0#, SIICP 10#, BH 0#. BDW 0 MIN. **TIH & TAG CEMENT PLUG #9 @ 2,480'. BLM & NMOCD REPS ARE GOOD WITH CMT TAG. TOOH. RU WIRELINE, RIH & PERF 6 SQUEEZE HOLES @ 1,151'. POOH & RD WIRELINE. LW 3 BBLS, INJ RATE @ 1.5 BBLS/ MIN, 550 PSI. MU 4-1/2" CICR, TIH AND SET @ 1,101'. CEMENT PLUG #10 (NACIMIENTO TOP) 56 SX 13.6 BBL, 1.37, 14.8#, 6.64 GAL/SX. BOC @ 1,151'. 7 SX ABOVE, AND 49 SX BELOW CIRC. DISPLACE 3.8 BBLS, R/O 10 BBLS. TOOH, LD STINGER. WOC. MUT TAG SUB TIH & CEMENT PLUG #10 @ 1,015'. LD TBG. RU WIRELINE, RIH & PERF 6 SQUEEZE HOLES @ 351' (SURFACE). POOH & RD WIRELINE. LW 15 BBLS, INJ RATE @ 1.9 BBLS/MIN, 115 PSI. PUMP CEMENT PLUG #11 (SURFACE SHOE) 133 SX 1.37, 14.8#, 6.64 GAL/SX. TOC @ 0', BOC @ 351'. RD FLOOR, ND BP & NU WH. PREP TO CUT OFF WH (WOC OVERNIGHT). NOTIFIED MONICA KUEHLING, NMOCD, AND BLM OF RIG MOVE. SDFN.**

12/9/2023 – CUT OFF WH. TOC IN 7" @ 0', 4-1/2" @ 9' & BH 0'. WELD P&A MARKER, FILL CASING AND CELLAR WITH 16 SX CMT. **DUSTIN PORCH, BLM, ON LOCATION. RD RR.**

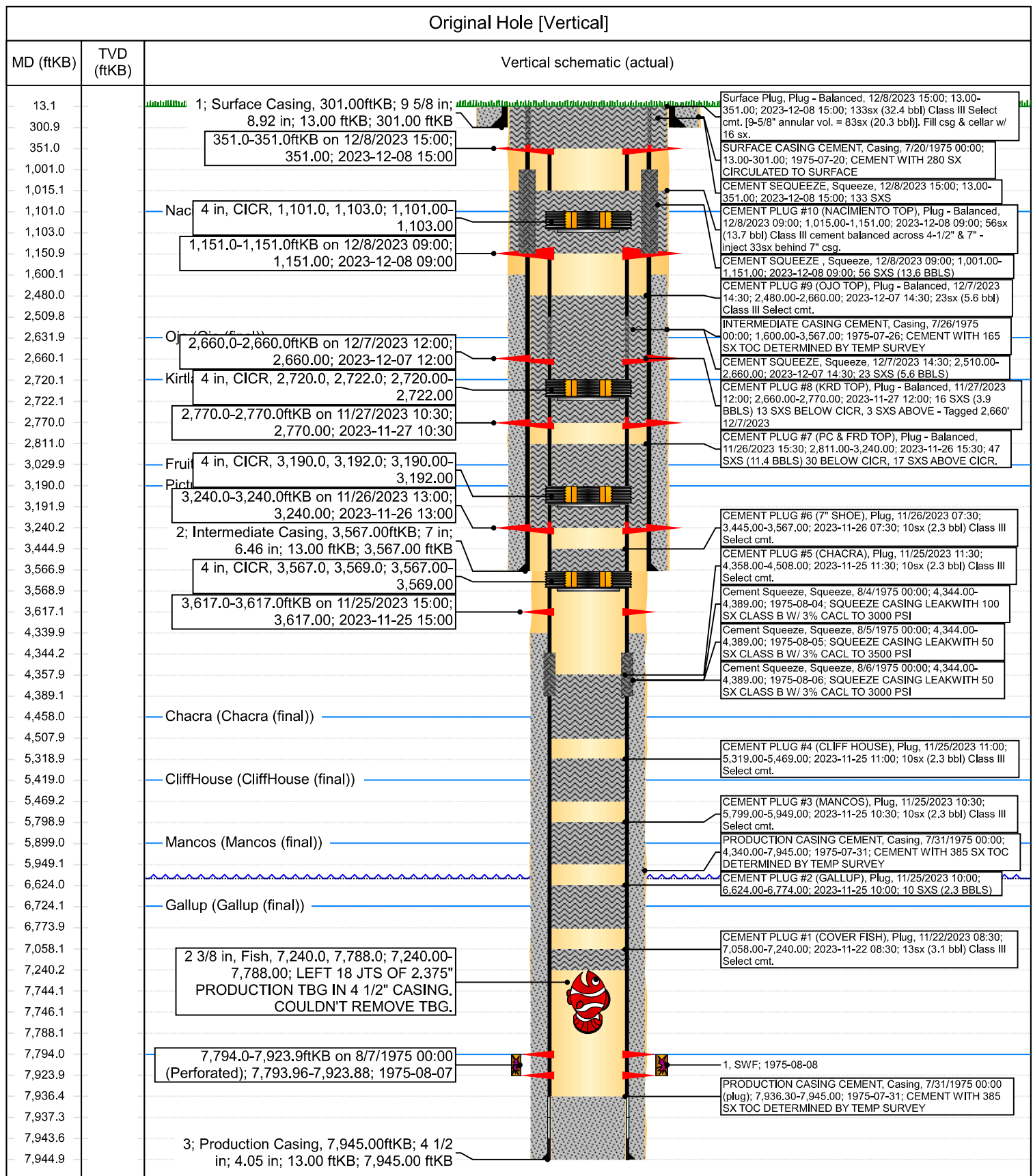
WELL PLUG & ABANDONED ON 12/9/2023.



Current Schematic - Completion Comments

Well Name: SAN JUAN 30-5 UNIT #47

API / UWI 3003921070	Surface Legal Location 017-030N-005W-L	Field Name DK	Route 1201	State/Province NEW MEXICO	Well Configuration Type Vertical
Ground Elevation (ft) 6,409.00	Original KB/RT Elevation (ft) 6,422.00	RKB to GL (ft) 13.00	KB-Casing Flange Distance (ft)	KB-Tubing Hanger Distance (ft)	



Priscilla Shorty

From: Rustin Mikeska
Sent: Thursday, December 7, 2023 12:21 PM
To: Kuehling, Monica, EMNRD; Priscilla Shorty; Kade, Matthew H; Rennick, Kenneth G
Cc: Max Weaver; Lee Murphy; Michael Wissing; Tammy Jones; Brice Clyde - (C); Porch, Dustin T; JP Knox; Clay Padgett; Brian Bradshaw; Ramon Hancock
Subject: RE: [EXTERNAL] Hilcorp P&A Variance Request: San Juan 30-5 Unit 47
Attachments: San Juan 30-5 Unit 47_P&A NOI OCD Approved.pdf; San Juan 30-5 Unit 47_Current WBD-12.7.2023.pdf; San Juan 30-5 Unit 47_Proposed WBD-12.7.2023.pdf

Good afternoon Monica – We moved back to the SJ 30-5 Unit 47 today and have the following update and proposal with BLM's prior approval..

Completed:

**Review attached current WBD, proposed WBD and original NOI as needed.*

- Pumped Plugs #1 - #8 as approved.
- Tagged TOC on KRD Plug #8 @ **2,660'**.
- Perf 4-1/2" & 7" csg w/ deep penetrating charges @ **2,660'** – pressure up to 800psi, minimal leakoff, no injection. Good circulation up 7" x 4-1/2".

Proposed:

1. RIH w/ tbg to +/-2,520', re-establish circulation up 7" x 4-1/2".
2. **Plug #9 [Ojo Top]** | Pump a 150' balanced cmt plug across the 4-1/2" & 7" from 2,510' – 2,660' using 21sx Class III cmt (1.37 yield)
 1. 23sx will be circulated for a 150' balanced cmt plug inside the 7" & 4-1/2" from 2,510' – 2,660'
4. Perf 4-1/2" & 7" csg w/ deep penetrating charges @ 1,151'.
5. Set CICR @ 1,101', establish injection behind 7" csg and circulation up 7" x 4-1/2" annulus.
6. **Plug #10 [Added Nacimiento]** | Pump a 150' balanced cmt plug across the 4-1/2" & 7" from 1,001' – 1,151' using 56sx Class III cmt (1.37 yield)
 1. 33sx will be sqz'd into the openhole annulus behind 7".
 2. 23sx will be circulated for a 150' balanced cmt plug inside the 7" & 4-1/2" from 1,001' – 1,151'.
7. Execute surface plug as approved in NOI.

We expect to be on location thru Saturday (12/9) to complete the remaining work.

Thanks,

Rustin Mikeska

P&A – Petroleum Engineer
 Hilcorp Energy

From: Rustin Mikeska <rmikeska@hilcorp.com>

Sent: Wednesday, December 6, 2023 12:44 PM

To: Kuehling, Monica, EMNRD <monica.kuehling@emnrd.nm.gov>; Priscilla Shorty <pshorty@hilcorp.com>; Kade, Matthew H <mkade@blm.gov>; Rennick, Kenneth G <krennick@blm.gov>

Cc: Max Weaver <mweaver@hilcorp.com>; Lee Murphy <lmurphy@hilcorp.com>; Michael Wissing <mwissing@hilcorp.com>; Tammy Jones <tajones@hilcorp.com>; Brice Clyde - (C) <Brice.Clyde@hilcorp.com>; Porch, Dustin T <dporch@blm.gov>; JP Knox <jknox@hilcorp.com>; Clay Padgett <cpadgett@hilcorp.com>; Brian Bradshaw <Brian.Bradshaw@hilcorp.com>; Ramon Hancock <Ramon.Hancock@hilcorp.com>

Subject: RE: [EXTERNAL] Hilcorp P&A Variance Request: San Juan 30-5 Unit 47

Good afternoon All – We have approval to move back to the SJ 30-5 Unit 47 tomorrow morning (12/7) and plan to execute the following proposal:

Completed: Abandoned up to the Ojo – see attached current WBD, proposed WBD and original NOI as needed.

- Pumped Plugs #1 - #8 as approved.
- Tagged TOC on KRD Plug #8 @ 2,676'.

Proposed

1. Perf 4-1/2" & 7" csg w/ deep penetrating charges @ 2,670'.
2. Set CICR @ 2,631', establish injection behind 7" csg and circulation up 7" x 4-1/2" annulus.
3. **Plug #9 [Ojo Top]** | Pump a 140' balanced cmt plug across the 4-1/2" & 7" from 2,530' – 2,670' using 52sx Class III cmt (1.37 yield)
 1. 31sx will be sqz'd into the openhole annulus behind 7".
 2. 21sx will be circulated for a 140' balanced cmt plug inside the 7" & 4-1/2" from 2,530' – 2,670'.
4. Perf 4-1/2" & 7" csg w/ deep penetrating charges @ 1,151'.
5. Set CICR @ 1,101', establish injection behind 7" csg and circulation up 7" x 4-1/2" annulus.
6. **Plug #10 [Added Nacimiento]** | Pump a 150' balanced cmt plug across the 4-1/2" & 7" from 1,001' – 1,151' using 56sx Class III cmt (1.37 yield)
 1. 33sx will be sqz'd into the openhole annulus behind 7".
 2. 23sx will be circulated for a 150' balanced cmt plug inside the 7" & 4-1/2" from 1,001' – 1,151'.
7. Execute surface plug as approved in NOI.

We expect to be on location thru Saturday (12/9) to complete the remaining work.

Thanks,

Rustin Mikeska

P&A – Petroleum Engineer

Cell: (254) 913-6777

Office: (713) 289-2931

rmikeska@hilcorp.com



From: Kuehling, Monica, EMNRD <monica.kuehling@emnrd.nm.gov>

Sent: Tuesday, December 5, 2023 4:12 PM

To: Rustin Mikeska <rmikeska@hilcorp.com>; Priscilla Shorty <pshorty@hilcorp.com>; Kade, Matthew H <mkade@blm.gov>; Rennick, Kenneth G <krennick@blm.gov>

Cc: Max Weaver <mweaver@hilcorp.com>; Lee Murphy <lmurphy@hilcorp.com>; Michael Wissing <mwissing@hilcorp.com>; Tammy Jones <tajones@hilcorp.com>; Brice Clyde - (C) <Brice.Clyde@hilcorp.com>; Porch, Dustin T <dporch@blm.gov>; JP Knox <jknox@hilcorp.com>; Clay Padgett <cpadgett@hilcorp.com>; Brian Bradshaw <Brian.Bradshaw@hilcorp.com>

Subject: RE: [EXTERNAL] Hilcorp P&A Variance Request: San Juan 30-5 Unit 47

CAUTION: External sender. DO NOT open links or attachments from UNKNOWN senders.

Thank you

From: Rustin Mikeska <rmikeska@hilcorp.com>

Sent: Tuesday, December 5, 2023 3:04 PM

To: Kuehling, Monica, EMNRD <monica.kuehling@emnrd.nm.gov>; Priscilla Shorty <pshorty@hilcorp.com>; Kade, Matthew H <mkade@blm.gov>; Rennick, Kenneth G <krennick@blm.gov>

Cc: Max Weaver <mweaver@hilcorp.com>; Lee Murphy <lmurphy@hilcorp.com>; Michael Wissing <mwissing@hilcorp.com>; Tammy Jones <tajones@hilcorp.com>; Brice Clyde - (C) <Brice.Clyde@hilcorp.com>; Porch, Dustin T <dporch@blm.gov>; JP Knox <jknox@hilcorp.com>; Clay Padgett <cpadgett@hilcorp.com>; Brian Bradshaw <Brian.Bradshaw@hilcorp.com>

Subject: RE: [EXTERNAL] Hilcorp P&A Variance Request: San Juan 30-5 Unit 47

Afternoon Monica – We have submitted a request for a work exemption to the BLM wildlife management representative and proposed to move back to the SJ 30-5 Unit 47 after we finish our current P&A job.

Brice and I will update everyone with an expected move-back date once approved.

Thanks,

Rustin Mikeska

P&A – Petroleum Engineer
Hilcorp Energy

From: Kuehling, Monica, EMNRD <monica.kuehling@emnrd.nm.gov>

Sent: Tuesday, December 5, 2023 3:11 PM

To: Priscilla Shorty <pshorty@hilcorp.com>; Rustin Mikeska <rmikeska@hilcorp.com>; Kade, Matthew H <mkade@blm.gov>; Rennick, Kenneth G <krennick@blm.gov>

Cc: Max Weaver <mweaver@hilcorp.com>; Lee Murphy <lmurphy@hilcorp.com>; Michael Wissing <mwissing@hilcorp.com>; Tammy Jones <tajones@hilcorp.com>; Brice Clyde - (C) <Brice.Clyde@hilcorp.com>; Porch, Dustin T <dporch@blm.gov>; JP Knox <jknox@hilcorp.com>; Clay Padgett <cpadgett@hilcorp.com>; Brian Bradshaw <Brian.Bradshaw@hilcorp.com>

Subject: RE: [EXTERNAL] Hilcorp P&A Variance Request: San Juan 30-5 Unit 47

CAUTION: External sender. DO NOT open links or attachments from UNKNOWN senders.

Thank you Priscilla

The well can be plugged

If the BLM agrees Hilcorp should move back to the well and finish plugging and not wait until spring.

Monica Kuehling
Compliance Officer Supervisor
Deputy Oil and Gas Inspector
New Mexico Oil Conservation Division
North District
Office Phone: 505-334-6178 ext. 123
Cell Phone: 505-320-0243
Email - monica.kuehling@emnrd.nm.gov

From: Priscilla Shorty <pshorty@hilcorp.com>
Sent: Tuesday, December 5, 2023 2:08 PM
To: Rustin Mikeska <rmikeska@hilcorp.com>; Kuehling, Monica, EMNRD <monica.kuehling@emnrd.nm.gov>; Kade, Matthew H <mkade@blm.gov>; Rennick, Kenneth G <krennick@blm.gov>
Cc: Max Weaver <mweaver@hilcorp.com>; Lee Murphy <lmurphy@hilcorp.com>; Michael Wissing <mwissing@hilcorp.com>; Tammy Jones <tajones@hilcorp.com>; Brice Clyde - (C) <Brice.Clyde@hilcorp.com>; Porch, Dustin T <dporch@blm.gov>; JP Knox <jknnox@hilcorp.com>; Clay Padgett <cpadgett@hilcorp.com>; Brian Bradshaw <Brian.Bradshaw@hilcorp.com>
Subject: RE: [EXTERNAL] Hilcorp P&A Variance Request: San Juan 30-5 Unit 47

Hi Monica,

The operator took a BH pressure reading at 1:57pm today and it was 2 psi. And the well was shut-in since last Thursday, November 30th.

Thanks,

Priscilla Shorty

Operations Regulatory Technician

Hilcorp Energy Company

505-324-5188

pshorty@hilcorp.com

From: Rustin Mikeska <rmikeska@hilcorp.com>
Sent: Tuesday, December 5, 2023 9:30 AM
To: Kuehling, Monica, EMNRD <monica.kuehling@emnrd.nm.gov>; Priscilla Shorty <pshorty@hilcorp.com>; Kade, Matthew H <mkade@blm.gov>; Rennick, Kenneth G <krennick@blm.gov>
Cc: Max Weaver <mweaver@hilcorp.com>; Lee Murphy <lmurphy@hilcorp.com>; Michael Wissing <mwissing@hilcorp.com>; Tammy Jones <tajones@hilcorp.com>; Brice Clyde - (C) <Brice.Clyde@hilcorp.com>; Porch, Dustin T <dporch@blm.gov>; JP Knox <jknnox@hilcorp.com>; Clay Padgett <cpadgett@hilcorp.com>; Brian Bradshaw <Brian.Bradshaw@hilcorp.com>
Subject: RE: [EXTERNAL] Hilcorp P&A Variance Request: San Juan 30-5 Unit 47

The operator will be going out this afternoon to take a pressure reading and report back. Priscilla will update everyone with the SI bradenhead pressure.

Thanks,

Rustin Mikeska

P&A – Petroleum Engineer

Hilcorp Energy

From: Kuehling, Monica, EMNRD <monica.kuehling@emnrd.nm.gov>
Sent: Tuesday, December 5, 2023 10:28 AM
To: Rustin Mikeska <rmikeska@hilcorp.com>; Priscilla Shorty <pshorty@hilcorp.com>; Kade, Matthew H <mkade@blm.gov>; Rennick, Kenneth G <krennick@blm.gov>
Cc: Max Weaver <mweaver@hilcorp.com>; Lee Murphy <lmurphy@hilcorp.com>; Michael Wissing <mwissing@hilcorp.com>; Tammy Jones <tajones@hilcorp.com>; Brice Clyde - (C) <Brice.Clyde@hilcorp.com>; Porch, Dustin T <dporch@blm.gov>; JP Knox <jknnox@hilcorp.com>; Clay Padgett <cpadgett@hilcorp.com>; Brian Bradshaw <Brian.Bradshaw@hilcorp.com>
Subject: RE: [EXTERNAL] Hilcorp P&A Variance Request: San Juan 30-5 Unit 47

CAUTION: External sender. DO NOT open links or attachments from UNKNOWN senders.

Rustin

Have we received a pressure check on the above well.

Monica

From: Kuehling, Monica, EMNRD
Sent: Monday, December 4, 2023 2:31 PM
To: Rustin Mikeska <rmikeska@hilcorp.com>; Priscilla Shorty <pshorty@hilcorp.com>; Kade, Matthew H <mkade@blm.gov>; Rennick, Kenneth G <krennick@blm.gov>
Cc: Max Weaver <mweaver@hilcorp.com>; Lee Murphy <lmurphy@hilcorp.com>; Michael Wissing <mwissing@hilcorp.com>; Tammy Jones <tajones@hilcorp.com>; Brice Clyde - (C) <Brice.Clyde@hilcorp.com>; Porch, Dustin T <dporch@blm.gov>; JP Knox <jknex@hilcorp.com>; Clay Padgett <cpadgett@hilcorp.com>; Brian Bradshaw <Brian.Bradshaw@hilcorp.com>
Subject: RE: [EXTERNAL] Hilcorp P&A Variance Request: San Juan 30-5 Unit 47

It has not been 7 days since last blow down.

Just check pressure tomorrow.

Thank you

Monica Kuehling
Compliance Officer Supervisor
Deputy Oil and Gas Inspector
New Mexico Oil Conservation Division
North District
Office Phone: 505-334-6178 ext. 123
Cell Phone: 505-320-0243
Email - monica.kuehling@emnrd.nm.gov

From: Rustin Mikeska <rmikeska@hilcorp.com>
Sent: Monday, December 4, 2023 2:09 PM
To: Kuehling, Monica, EMNRD <monica.kuehling@emnrd.nm.gov>; Priscilla Shorty <pshorty@hilcorp.com>; Kade, Matthew H <mkade@blm.gov>; Rennick, Kenneth G <krennick@blm.gov>
Cc: Max Weaver <mweaver@hilcorp.com>; Lee Murphy <lmurphy@hilcorp.com>; Michael Wissing <mwissing@hilcorp.com>; Tammy Jones <tajones@hilcorp.com>; Brice Clyde - (C) <Brice.Clyde@hilcorp.com>; Porch, Dustin T <dporch@blm.gov>; JP Knox <jknex@hilcorp.com>; Clay Padgett <cpadgett@hilcorp.com>; Brian Bradshaw <Brian.Bradshaw@hilcorp.com>
Subject: Re: [EXTERNAL] Hilcorp P&A Variance Request: San Juan 30-5 Unit 47

We have not. They bled it off 11/30, but shut it back in.

Thanks,
Rustin

From: Kuehling, Monica, EMNRD <monica.kuehling@emnrd.nm.gov>
Sent: Monday, December 4, 2023 3:04:08 PM
To: Rustin Mikeska <rmikeska@hilcorp.com>; Priscilla Shorty <pshorty@hilcorp.com>; Kade, Matthew H <mkade@blm.gov>; Rennick, Kenneth G <krennick@blm.gov>
Cc: Max Weaver <mweaver@hilcorp.com>; Lee Murphy <lmurphy@hilcorp.com>; Michael Wissing <mwissing@hilcorp.com>; Tammy Jones <tajones@hilcorp.com>; Brice Clyde - (C) <Brice.Clyde@hilcorp.com>; Porch, Dustin T <dporch@blm.gov>; JP Knox <jknox@hilcorp.com>; Clay Padgett <cpadgett@hilcorp.com>; Brian Bradshaw <Brian.Bradshaw@hilcorp.com>
Subject: RE: [EXTERNAL] Hilcorp P&A Variance Request: San Juan 30-5 Unit 47

CAUTION: External sender. DO NOT open links or attachments from UNKNOWN senders.

So you haven't been leaving it open after rig move.

From: Rustin Mikeska <rmikeska@hilcorp.com>
Sent: Monday, December 4, 2023 2:00 PM
To: Kuehling, Monica, EMNRD <monica.kuehling@emnrd.nm.gov>; Priscilla Shorty <pshorty@hilcorp.com>; Kade, Matthew H <mkade@blm.gov>; Rennick, Kenneth G <krennick@blm.gov>
Cc: Max Weaver <mweaver@hilcorp.com>; Lee Murphy <lmurphy@hilcorp.com>; Michael Wissing <mwissing@hilcorp.com>; Tammy Jones <tajones@hilcorp.com>; Brice Clyde - (C) <Brice.Clyde@hilcorp.com>; Porch, Dustin T <dporch@blm.gov>; JP Knox <jknox@hilcorp.com>; Clay Padgett <cpadgett@hilcorp.com>; Brian Bradshaw <Brian.Bradshaw@hilcorp.com>
Subject: RE: [EXTERNAL] Hilcorp P&A Variance Request: San Juan 30-5 Unit 47

Ok, we will follow the same procedure as last time: bleed off for 24hr, SI for 24hr BU. We will report the 24hr SI BH pressure on Wednesday, 12/6.

Thanks,
Rustin Mikeska
P&A – Petroleum Engineer
Hilcorp Energy

From: Kuehling, Monica, EMNRD <monica.kuehling@emnrd.nm.gov>
Sent: Monday, December 4, 2023 2:47 PM
To: Rustin Mikeska <rmikeska@hilcorp.com>; Priscilla Shorty <pshorty@hilcorp.com>; Kade, Matthew H <mkade@blm.gov>; Rennick, Kenneth G <krennick@blm.gov>
Cc: Max Weaver <mweaver@hilcorp.com>; Lee Murphy <lmurphy@hilcorp.com>; Michael Wissing <mwissing@hilcorp.com>; Tammy Jones <tajones@hilcorp.com>; Brice Clyde - (C) <Brice.Clyde@hilcorp.com>; Porch, Dustin T <dporch@blm.gov>; JP Knox <jknox@hilcorp.com>; Clay Padgett <cpadgett@hilcorp.com>; Brian Bradshaw <Brian.Bradshaw@hilcorp.com>
Subject: RE: [EXTERNAL] Hilcorp P&A Variance Request: San Juan 30-5 Unit 47

CAUTION: External sender. DO NOT open links or attachments from UNKNOWN senders.

Better yet have a 24 hour shut in and let me know what the pressure is.

Thank you

Monica

From: Kuehling, Monica, EMNRD
Sent: Monday, December 4, 2023 1:25 PM
To: Rustin Mikeska <rmikeska@hilcorp.com>; Priscilla Shorty <pshorty@hilcorp.com>; Kade, Matthew H <mkade@blm.gov>; Rennick, Kenneth G <krennick@blm.gov>
Cc: Max Weaver <mweaver@hilcorp.com>; Lee Murphy <lmurphy@hilcorp.com>; Michael Wissing <mwissing@hilcorp.com>; Tammy Jones <tajones@hilcorp.com>; Brice Clyde - (C) <Brice.Clyde@hilcorp.com>; Porch, Dustin T <dporch@blm.gov>; JP Knox <jknex@hilcorp.com>; Clay Padgett <cpadgett@hilcorp.com>; Brian Bradshaw <Brian.Bradshaw@hilcorp.com>
Subject: RE: [EXTERNAL] Hilcorp P&A Variance Request: San Juan 30-5 Unit 47

Rustin

11/28/2023 bh had 13 psi

11/30/2023 bh had 6 psi

What does it have today

Monica

From: Rustin Mikeska <rmikeska@hilcorp.com>
Sent: Monday, December 4, 2023 1:14 PM
To: Priscilla Shorty <pshorty@hilcorp.com>; Kuehling, Monica, EMNRD <monica.kuehling@emnrd.nm.gov>; Kade, Matthew H <mkade@blm.gov>; Rennick, Kenneth G <krennick@blm.gov>
Cc: Max Weaver <mweaver@hilcorp.com>; Lee Murphy <lmurphy@hilcorp.com>; Michael Wissing <mwissing@hilcorp.com>; Tammy Jones <tajones@hilcorp.com>; Brice Clyde - (C) <Brice.Clyde@hilcorp.com>; Porch, Dustin T <dporch@blm.gov>; JP Knox <jknex@hilcorp.com>; Clay Padgett <cpadgett@hilcorp.com>; Brian Bradshaw <Brian.Bradshaw@hilcorp.com>
Subject: RE: [EXTERNAL] Hilcorp P&A Variance Request: San Juan 30-5 Unit 47

Good Afternoon Monica – We moved the rig off the #47 due to the Rosa Mesa Closure (12/1 - 3/31) and sustained bradenhead pressure problem.

Due to the Rosa Mesa Closure and a 6psi 24hr Bradenhead test 11/30/2023, we'd like to propose the following:

- Execute & report a BH test monthly through March 2024 (as we have done in similar situations).
- Review gas analysis and compare to regional Dakota gas samples. Our bradenhead sample results show 99% methane.
- Review SIBHP at that time and trend over 4 months.
- Review regional geology of freshwater bearing zone – correlate the Ojo Top regionally.
- Explore options for shutting off gas on bradenhead.
 - Drilling out the Kirtland and “retrying” provides a low chance of success considering the temperature survey suggesting TOC ~1,600’.
 - We perforated for the Kirtland Plug using deep penetrating charges (21.5” penetration).
 - If there is cement in the annulus and tight formation at perf depth, injection will not be possible without fracking the formation.

With these considerations, please advise on a path forward. If NMOCD requires our return to the well, we will need to contact BLM and request an exemption to continue work during closure.

Thanks,
Rustin Mikeska
 P&A – Petroleum Engineer

Cell: (254) 913-6777
Office: (713) 289-2931
rmikeska@hilcorp.com



From: Priscilla Shorty <pshorty@hilcorp.com>
Sent: Monday, December 4, 2023 12:52 PM
To: Kuehling, Monica, EMNRD <monica.kuehling@emnrd.nm.gov>; Rustin Mikeska <rmikeska@hilcorp.com>; Kade, Matthew H <mkade@blm.gov>; Rennick, Kenneth G <krennick@blm.gov>
Cc: Max Weaver <mweaver@hilcorp.com>; Lee Murphy <lmurphy@hilcorp.com>; Michael Wissing <mwissing@hilcorp.com>; Tammy Jones <tajones@hilcorp.com>; Brice Clyde - (C) <Brice.Clyde@hilcorp.com>; Porch, Dustin T <dporch@blm.gov>; JP Knox <jknox@hilcorp.com>; Clay Padgett <cpadgett@hilcorp.com>; Brian Bradshaw <Brian.Bradshaw@hilcorp.com>
Subject: RE: [EXTERNAL] Hilcorp P&A Variance Request: San Juan 30-5 Unit 47

Monica ~

The gas analysis for the subject well (San Juan 30-5 Unit 47, 30-039-21070) has been submitted in OCD Permitting, **Action ID 290783**.

Thank you,

Priscilla Shorty
Operations Regulatory Technician
Hilcorp Energy Company
505-324-5188
pshorty@hilcorp.com

From: Kuehling, Monica, EMNRD <monica.kuehling@emnrd.nm.gov>
Sent: Monday, December 4, 2023 8:49 AM
To: Rustin Mikeska <rmikeska@hilcorp.com>; Priscilla Shorty <pshorty@hilcorp.com>; Kade, Matthew H <mkade@blm.gov>; Rennick, Kenneth G <krennick@blm.gov>
Cc: Max Weaver <mweaver@hilcorp.com>; Lee Murphy <lmurphy@hilcorp.com>; Michael Wissing <mwissing@hilcorp.com>; Tammy Jones <tajones@hilcorp.com>; Brice Clyde - (C) <Brice.Clyde@hilcorp.com>; Porch, Dustin T <dporch@blm.gov>; JP Knox <jknox@hilcorp.com>; Clay Padgett <cpadgett@hilcorp.com>; Brian Bradshaw <Brian.Bradshaw@hilcorp.com>
Subject: RE: [EXTERNAL] Hilcorp P&A Variance Request: San Juan 30-5 Unit 47

CAUTION: External sender. DO NOT open links or attachments from UNKNOWN senders.

You will need to drill out the 100 foot Kirtland plug and try perforating through everything to get cement on the outside and see if you can get the gas shut off.

Monica

From: Rustin Mikeska <rmikeska@hilcorp.com>
Sent: Monday, December 4, 2023 8:39 AM
To: Priscilla Shorty <pshorty@hilcorp.com>; Kade, Matthew H <mkade@blm.gov>; Rennick, Kenneth G <krennick@blm.gov>; Kuehling, Monica, EMNRD <monica.kuehling@emnrd.nm.gov>

Cc: Max Weaver <mweaver@hilcorp.com>; Lee Murphy <lmurphy@hilcorp.com>; Michael Wissing <mwissing@hilcorp.com>; Tammy Jones <tajones@hilcorp.com>; Brice Clyde - (C) <Brice.Clyde@hilcorp.com>; Porch, Dustin T <dporch@blm.gov>; JP Knox <jknox@hilcorp.com>; Clay Padgett <cpadgett@hilcorp.com>; Brian Bradshaw <Brian.Bradshaw@hilcorp.com>

Subject: RE: [EXTERNAL] Hilcorp P&A Variance Request: San Juan 30-5 Unit 47

Good morning Monica – The rig will be ready to leave the area tomorrow.

Do we have a determination on path forward for this well? The well is in a closure area, but we can ask for an exemption from BLM to finalize the P&A..

Thanks,
Rustin Mikeska
P&A – Petroleum Engineer
Hilcorp Energy

From: Priscilla Shorty <pshorty@hilcorp.com>

Sent: Thursday, November 30, 2023 1:57 PM

To: Kade, Matthew H <mkade@blm.gov>; Rennick, Kenneth G <krennick@blm.gov>; Kuehling, Monica, EMNRD <monica.kuehling@emnrd.nm.gov>

Cc: Max Weaver <mweaver@hilcorp.com>; Lee Murphy <lmurphy@hilcorp.com>; Michael Wissing <mwissing@hilcorp.com>; Tammy Jones <tajones@hilcorp.com>; Brice Clyde - (C) <Brice.Clyde@hilcorp.com>; Porch, Dustin T <dporch@blm.gov>; JP Knox <jknox@hilcorp.com>; Clay Padgett <cpadgett@hilcorp.com>; Brian Bradshaw <Brian.Bradshaw@hilcorp.com>; Rustin Mikeska <rmikeska@hilcorp.com>

Subject: RE: [EXTERNAL] Hilcorp P&A Variance Request: San Juan 30-5 Unit 47

Monica & Kenny,

Here is summary of the BH pressure for the subject well:

11-29-23 - BH shut @ 12:30 pm

11-30-23 - Tested BH @ 12:35 pm (after 24 hr shut-in), pressure was 6.1 psi. Opened 1" valve and pressure blew to zero within 30 seconds. Left BH valve open.

As soon as we receive the gas sample results, we will send it your way.

Thanks,

Priscilla Shorty
Operations Regulatory Technician
Hilcorp Energy Company
505-324-5188
pshorty@hilcorp.com

From: Kade, Matthew H <mkade@blm.gov>

Sent: Tuesday, November 28, 2023 9:18 AM

To: Rustin Mikeska <rmikeska@hilcorp.com>; Rennick, Kenneth G <krennick@blm.gov>; Kuehling, Monica, EMNRD <monica.kuehling@emnrd.nm.gov>

Cc: Max Weaver <mweaver@hilcorp.com>; Lee Murphy <lmurphy@hilcorp.com>; Michael Wissing <mwissing@hilcorp.com>; Priscilla Shorty <pshorty@hilcorp.com>; Tammy Jones <tajones@hilcorp.com>; Brice Clyde -

(C) <Brice.Clyde@hilcorp.com>; Porch, Dustin T <dporch@blm.gov>; JP Knox <jknox@hilcorp.com>; Clay Padgett <cpadgett@hilcorp.com>; Brian Bradshaw <Brian.Bradshaw@hilcorp.com>

Subject: Re: [EXTERNAL] Hilcorp P&A Variance Request: San Juan 30-5 Unit 47

CAUTION: External sender. DO NOT open links or attachments from UNKNOWN senders.

The BLM finds the proposal appropriate.

Matthew Kade

Petroleum Engineer
BLM - Farmington Field Office
6251 College Blvd
Farmington, NM 87402
Office: (505) 564-7736

From: Rustin Mikeska <rmikeska@hilcorp.com>

Sent: Tuesday, November 28, 2023 8:28 AM

To: Rennick, Kenneth G <krennick@blm.gov>; Kuehling, Monica, EMNRD <monica.kuehling@emnrd.nm.gov>

Cc: Max Weaver <mweaver@hilcorp.com>; Lee Murphy <lmurphy@hilcorp.com>; Michael Wissing <mwissing@hilcorp.com>; Priscilla Shorty <pshorty@hilcorp.com>; Tammy Jones <tajones@hilcorp.com>; Brice Clyde - (C) <Brice.Clyde@hilcorp.com>; Porch, Dustin T <dporch@blm.gov>; Kade, Matthew H <mkade@blm.gov>; JP Knox <jknox@hilcorp.com>; Clay Padgett <cpadgett@hilcorp.com>; Brian Bradshaw <Brian.Bradshaw@hilcorp.com>

Subject: RE: [EXTERNAL] Hilcorp P&A Variance Request: San Juan 30-5 Unit 47

Good morning All – Please approve the following path forward as discussed.

Completed:

- Fish tbg down to 7,263', tag fill on top of fish @ 7,240' – receive variance to begin plugging at this depth.
- Spot 200' cmt Plug #1 from 7,040' – 7,240' – tag TOC good @ 7,058'.
- Pump Plugs #2 - #5 without issue.
- Pump Plugs #6 - #7 as approved.
- Check pressures: SIBHP 15psi, SIICP 0psi, SICP 0psi.
- Split Ojo & Kirtland Plugs due to 15psi BH pressure.
 1. Perf holes w/ DP charges in 4-1/2" & 7" @ 2,770' – could not inject, pressure holding 600psi.
 2. Set CICR @ 2,720' – established circulation up 7" x 4-1/2".
 3. **Plug #8 [KRD]** | Pump a 100' balanced cmt plug across the 4-1/2" from 2,670' – 2,770' using 16sx Class III cmt (1.37 yield)
- WOC, tagged TOC good @ 2,676'. Bled off BH – built ~4psi in 1.5hr. Left BH SI overnight.
- [11/28/23] AOL, found BH pressure to be 15psi – notified NMOCD.

Path Forward per NMOCD:

1. Obtain gas sample on bradenhead, run analysis.
2. Leave bradenhead open to atmosphere for 24hrs.
3. SI bradenhead for 24hrs, return to check SIBHP.
4. Report to NMOCD.

Thanks,

Rustin Mikeska

P&A – Petroleum Engineer

Hilcorp Energy

From: Rennick, Kenneth G <krennick@blm.gov>
Sent: Monday, November 27, 2023 10:38 AM
To: Rustin Mikeska <rmikeska@hilcorp.com>; Kuehling, Monica, EMNRD <monica.kuehling@emnrd.nm.gov>
Cc: Max Weaver <mweaver@hilcorp.com>; Lee Murphy <lmurphy@hilcorp.com>; Michael Wissing <mwissing@hilcorp.com>; Priscilla Shorty <pshorty@hilcorp.com>; Tammy Jones <tajones@hilcorp.com>; Brice Clyde - (C) <Brice.Clyde@hilcorp.com>; Porch, Dustin T <dporch@blm.gov>; Kade, Matthew H <mkade@blm.gov>
Subject: Re: [EXTERNAL] Hilcorp P&A Variance Request: San Juan 30-5 Unit 47

CAUTION: External sender. DO NOT open links or attachments from UNKNOWN senders.

BLM finds the proposal appropriate.

Get [Outlook for iOS](#)

From: Rustin Mikeska <rmikeska@hilcorp.com>
Sent: Monday, November 27, 2023 9:32:16 AM
To: Rennick, Kenneth G <krennick@blm.gov>; Kuehling, Monica, EMNRD <monica.kuehling@emnrd.nm.gov>
Cc: Max Weaver <mweaver@hilcorp.com>; Lee Murphy <lmurphy@hilcorp.com>; Michael Wissing <mwissing@hilcorp.com>; Priscilla Shorty <pshorty@hilcorp.com>; Tammy Jones <tajones@hilcorp.com>; Brice Clyde - (C) <Brice.Clyde@hilcorp.com>; Porch, Dustin T <dporch@blm.gov>; Kade, Matthew H <mkade@blm.gov>
Subject: RE: [EXTERNAL] Hilcorp P&A Variance Request: San Juan 30-5 Unit 47

Good morning All – We are proposing the following after bradenhead pressure reappeared – 15psi this AM (previously Opsi).

Completed:

- Spot 200' cmt Plug #1 from 7,040' – 7,240' – tag TOC good @ 7,058'.
- Pump Plugs #2 - #5 without issue.
- Pump Plug #6 as approved.
- Perf, Set CICR, Pump Plug #7 as approved.
- WOC, tagged TOC good @ 2,811'.

Proposed: Split Kirtland & Ojo plugs due to 15psi bradenhead pressure:

1. Perf circ holes in 4-1/2" & 7" @ 2,770'.
2. Set CICR @ 2,720' – establish injection into annulus behind 7" & circulation up 7" x 4-1/2".
3. **Plug #8 [KRD]** | Pump a 100' balanced cmt plug across the 4-1/2" from 2,670' – 2,770' using 38sx Class III cmt (1.37 yield)
 1. 22sx will be sqz'd into the openhole annulus behind 7".
 2. 16sx will be circulated to spot 100' cmt inside 7" & 4-1/2".
4. WOC, Tag TOC. Monitor bradenhead pressure, report to NMOCD.
5. Continue executing proposal as approved.

Thanks,

Rustin Mikeska

P&A – Petroleum Engineer

Hilcorp Energy

From: Rennick, Kenneth G <krennick@blm.gov>
Sent: Monday, November 27, 2023 7:48 AM
To: Rustin Mikeska <rmikeska@hilcorp.com>; Kuehling, Monica, EMNRD <monica.kuehling@emnrd.nm.gov>
Cc: Max Weaver <mweaver@hilcorp.com>; Lee Murphy <lmurphy@hilcorp.com>; Michael Wissing <mwissing@hilcorp.com>; Priscilla Shorty <pshorty@hilcorp.com>; Tammy Jones <tajones@hilcorp.com>; Brice Clyde - (C) <Brice.Clyde@hilcorp.com>; Porch, Dustin T <dporch@blm.gov>; Kade, Matthew H <mkade@blm.gov>
Subject: Re: [EXTERNAL] Hilcorp P&A Variance Request: San Juan 30-5 Unit 47

CAUTION: External sender. DO NOT open links or attachments from UNKNOWN senders.

The BLM finds the proposal appropriate

Get [Outlook for iOS](#)

From: Rustin Mikeska <rmikeska@hilcorp.com>
Sent: Sunday, November 26, 2023 1:42:52 PM
To: Kuehling, Monica, EMNRD <monica.kuehling@emnrd.nm.gov>; Rennick, Kenneth G <krennick@blm.gov>
Cc: Max Weaver <mweaver@hilcorp.com>; Lee Murphy <lmurphy@hilcorp.com>; Michael Wissing <mwissing@hilcorp.com>; Priscilla Shorty <pshorty@hilcorp.com>; Tammy Jones <tajones@hilcorp.com>; Brice Clyde - (C) <Brice.Clyde@hilcorp.com>; Porch, Dustin T <dporch@blm.gov>
Subject: Re: [EXTERNAL] Hilcorp P&A Variance Request: San Juan 30-5 Unit 47

Afternoon All – We are proposing the following after being unable to inject outside the 7" csg into formation for Plug #7.

Completed:

- Spot 200' cmt Plug #1 from 7,040' – 7,240' – tag TOC good @ 7,058'.
- Pump Plugs #2 - #5 without issue.
- Pump Plug #6 as approved.
- Perf holes in 4-1/2" & 7" casing with DP charges @ 3,240' for Plug #7.
- Establish circulation up 7" x 4-1/2" annulus.
- SI 7" at surface - attempt to inject behind 7" into formation - pressured up to 600psi, holding.
- *Note: Temp survey [1975] suggests TOC at ~1,600'. (Only a consideration since not a CBL.)*

Proposed:

1. Set CICR at 3,190'. Establish circulation up 7" x 4-1/2" annulus.
2. **Plug #7 [PC/FRD]** | Circulate in and spot a 310' balanced cmt plug across the 4-1/2" from 2,930' - 3,240' using 47sx Class III cmt (1.37 yield).
3. WOC, tag TOC.
4. Continue executing proposal as approved.

Thanks,

Rustin Mikeska

P&A – Petroleum Engineer

Hilcorp Energy

Get [Outlook for iOS](#)

From: Rustin Mikeska

Sent: Saturday, November 25, 2023 6:55:16 PM

To: Kuehling, Monica, EMNRD <monica.kuehling@emnrd.nm.gov>; Rennick, Kenneth G <krennick@blm.gov>

Cc: Max Weaver <mweaver@hilcorp.com>; Lee Murphy <lmurphy@hilcorp.com>; Michael Wissing <mwissing@hilcorp.com>; Priscilla Shorty <pshorty@hilcorp.com>; Tammy Jones <tajones@hilcorp.com>; Brice Clyde - (C) <Brice.Clyde@hilcorp.com>; Porch, Dustin T <dporch@blm.gov>

Subject: RE: [EXTERNAL] Hilcorp P&A Variance Request: San Juan 30-5 Unit 47

Evening All – We are proposing the following after being unable to inject below the CICR for Plug #6.

Completed:

- Spot 200' cmt Plug #1 from 7,040' – 7,240' – tag TOC good @ 7,058'.
- Pump Plugs #2 - #5 without issue.
- Perf holes in 4-1/2" casing @ 3,617' for Plug #6.
- Set CICR @ 3,567' – Cannot establish injection into annulus.
 - Unsting, pressure test CICR and 4-1/2" csg good to 500psi.
 - Sting back into CICR, unable to establish injection into annulus.

Proposed:

1. **Plug #6 [IC Shoe]** | Spot 150' cmt on top of CICR from 3,467' – 3,567'.
2. WOC, tag TOC.
3. Continue executing proposal as approved.

Thanks,

Rustin Mikeska

P&A – Petroleum Engineer

Hilcorp Energy

From: Rustin Mikeska <rmikeska@hilcorp.com>

Sent: Wednesday, November 22, 2023 3:49 PM

To: Kuehling, Monica, EMNRD <monica.kuehling@emnrd.nm.gov>; Rennick, Kenneth G <krennick@blm.gov>

Cc: Max Weaver <mweaver@hilcorp.com>; Lee Murphy <lmurphy@hilcorp.com>; Michael Wissing

<mwissing@hilcorp.com>; Priscilla Shorty <pshorty@hilcorp.com>; Tammy Jones <tajones@hilcorp.com>; Brice Clyde - (C) <Brice.Clyde@hilcorp.com>; Porch, Dustin T <dporch@blm.gov>

Subject: Re: [EXTERNAL] Hilcorp P&A Variance Request: San Juan 30-5 Unit 47

Afternoon All - We were able to locate the HIC at ~4,395' (historical sqz interval).

We pressure tested the 4-1/2" csg above and below this depth good to 550psi.

We will continue the P&A as approved.

Thanks,
Rustin

Get [Outlook for iOS](#)

From: Rustin Mikeska

Sent: Wednesday, November 22, 2023 10:05:17 AM

To: Kuehling, Monica, EMNRD <monica.kuehling@emnrd.nm.gov>; Rennick, Kenneth G <krennick@blm.gov>

Cc: Max Weaver <mweaver@hilcorp.com>; Lee Murphy <lmurphy@hilcorp.com>; Michael Wissing <mwissing@hilcorp.com>; Priscilla Shorty <pshorty@hilcorp.com>; Tammy Jones <tajones@hilcorp.com>; Brice Clyde - (C) <Brice.Clyde@hilcorp.com>; Porch, Dustin T <dporch@blm.gov>

Subject: RE: [EXTERNAL] Hilcorp P&A Variance Request: San Juan 30-5 Unit 47

Yes, open-ended. If casing integrity cannot be proven at a given depth with the packer, we will WOC & tag. We will call & email an update on packer set depth if a good test is acquired.

Thanks,
Rustin Mikeska
P&A – Petroleum Engineer
Hilcorp Energy

From: Kuehling, Monica, EMNRD <monica.kuehling@emnrd.nm.gov>

Sent: Wednesday, November 22, 2023 9:57 AM

To: Rustin Mikeska <rmikeska@hilcorp.com>; Rennick, Kenneth G <krennick@blm.gov>

Cc: Max Weaver <mweaver@hilcorp.com>; Lee Murphy <lmurphy@hilcorp.com>; Michael Wissing <mwissing@hilcorp.com>; Priscilla Shorty <pshorty@hilcorp.com>; Tammy Jones <tajones@hilcorp.com>; Brice Clyde - (C) <Brice.Clyde@hilcorp.com>; Porch, Dustin T <dporch@blm.gov>

Subject: RE: [EXTERNAL] Hilcorp P&A Variance Request: San Juan 30-5 Unit 47

CAUTION: External sender. DO NOT open links or attachments from UNKNOWN senders.

Rustin

Approved to run first plug (open ended I take it?) and then to run packer to find hole and then test below – will need to keep NMOCD in the loop on casing test and where hole might be and where that packer was set. Casing test will have to pass in order to skip woc and tag on each formation chacra and below. All inside/outside above chacra.

Keep NMOCD posted via phone and email chain.

Thank you

Monica Kuehling
Compliance Officer Supervisor
Deputy Oil and Gas Inspector
New Mexico Oil Conservation Division
North District
Office Phone: 505-334-6178 ext. 123
Cell Phone: 505-320-0243
Email - monica.kuehling@emnrd.nm.gov

From: Rustin Mikeska <rmikeska@hilcorp.com>
Sent: Wednesday, November 22, 2023 8:38 AM
To: Kuehling, Monica, EMNRD <monica.kuehling@emnrd.nm.gov>; Rennick, Kenneth G <krennick@blm.gov>
Cc: Max Weaver <mweaver@hilcorp.com>; Lee Murphy <lmurphy@hilcorp.com>; Michael Wissing <mwissing@hilcorp.com>; Priscilla Shorty <pshorty@hilcorp.com>; Tammy Jones <tajones@hilcorp.com>; Brice Clyde - (C) <Brice.Clyde@hilcorp.com>; Porch, Dustin T <dporch@blm.gov>
Subject: RE: [EXTERNAL] Hilcorp P&A Variance Request: San Juan 30-5 Unit 47

Good morning Monica – BLM verbally approves the following, requesting your review:

Completed:

- Established full circulation of wellbore, conditioned hole.
- Pressure tested 4-1/2" to 550psi – comms w/ 7" csg apparent.
- Pressure tested 4-1/2" & 7" to 560psi – leakoff to 340psi, stabilized test pressure.

Proposed: Use packer to isolate the probable shallow HIC and prove 4-1/2" casing integrity below hole.

1. Pump & spot Plug #1 above TOF. WOC, Tag TOC.
2. Run pkr to locate HIC in 4-1/2".
3. Pump and spot Gallup, Mancos, Cliff House, Chacra cement plugs consecutively – no WOC after pressure test good.
4. Will begin WOC & Tag ops with the intermediate shoe plug, followed by Pictured Cliffs, Fruitland, Kirtland, Ojo, Surface.

Thanks,

Rustin Mikeska

P&A – Petroleum Engineer
Cell: (254) 913-6777
Office: (713) 289-2931
rmikeska@hilcorp.com



From: Kuehling, Monica, EMNRD <monica.kuehling@emnrd.nm.gov>
Sent: Tuesday, November 21, 2023 3:52 PM

To: Rennick, Kenneth G <krennick@blm.gov>; Rustin Mikeska <rmikeska@hilcorp.com>
Cc: Max Weaver <mweaver@hilcorp.com>; Lee Murphy <lmurphy@hilcorp.com>; Michael Wissing <mwissing@hilcorp.com>; Priscilla Shorty <pshorty@hilcorp.com>; Tammy Jones <tajones@hilcorp.com>; Brice Clyde - (C) <Brice.Clyde@hilcorp.com>; Porch, Dustin T <dporch@blm.gov>
Subject: RE: [EXTERNAL] Hilcorp P&A Variance Request: San Juan 30-5 Unit 47

CAUTION: External sender. DO NOT open links or attachments from UNKNOWN senders.

NMOCD agrees and approves below.

Note: any changes to below need to come through email and attached to email chain.

Thank you

Monica Kuehling
Compliance Officer Supervisor
Deputy Oil and Gas Inspector
New Mexico Oil Conservation Division
North District
Office Phone: 505-334-6178 ext. 123
Cell Phone: 505-320-0243
Email - monica.kuehling@emnrd.nm.gov

From: Rennick, Kenneth G <krennick@blm.gov>
Sent: Tuesday, November 21, 2023 2:47 PM
To: Rustin Mikeska <rmikeska@hilcorp.com>; Kuehling, Monica, EMNRD <monica.kuehling@emnrd.nm.gov>
Cc: Max Weaver <mweaver@hilcorp.com>; Lee Murphy <lmurphy@hilcorp.com>; Michael Wissing <mwissing@hilcorp.com>; Priscilla Shorty <pshorty@hilcorp.com>; Tammy Jones <tajones@hilcorp.com>; Brice Clyde - (C) <Brice.Clyde@hilcorp.com>; Porch, Dustin T <dporch@blm.gov>
Subject: Re: [EXTERNAL] Hilcorp P&A Variance Request: San Juan 30-5 Unit 47

The BLM finds the proposal appropriate.

Kenneth (Kenny) Rennick

Petroleum Engineer

Bureau of Land Management
Farmington Field Office
6251 College Blvd
Farmington, NM 87402

Email: krennick@blm.gov
Mobile & Text: 505.497.0019

From: Rustin Mikeska <rmikeska@hilcorp.com>

Sent: Tuesday, November 21, 2023 2:37 PM

To: Kuehling, Monica, EMNRD <monica.kuehling@emnrd.nm.gov>; Rennick, Kenneth G <krennick@blm.gov>

Cc: Max Weaver <mweaver@hilcorp.com>; Lee Murphy <lmurphy@hilcorp.com>; Michael Wissing <mwissing@hilcorp.com>; Priscilla Shorty <pshorty@hilcorp.com>; Tammy Jones <tajones@hilcorp.com>; Brice Clyde - (C) <Brice.Clyde@hilcorp.com>; Porch, Dustin T <dporch@blm.gov>

Subject: RE: [EXTERNAL] Hilcorp P&A Variance Request: San Juan 30-5 Unit 47

Good morning All – We are proposing the following as discussed:

Completed:

- See notes below in thread outlining previously completed work.
- RIH w/ overshot & fishing BHA, latch TOF @ 7,263' – jar for 6hrs, tbg not moving. Establish injection into formation.
- Release OS, check injection – cannot inject into formation. POOH w/ fishing BHA.
- Run GR, tag up 7,240' – loss of access to fish (and fish ID).
- Ran CBL from TOF @ 7,240' to surface. **Plug design proposal (attached is annotated CBL):*
 - Gallup – Inside plug, good bond
 - Mancos – Inside plug, ratty bond, but good isolation to Gallup below & Cliff House above
 - Cliff House – Inside plug, small area of poor bond, otherwise good
 - Chacra – Inside plug, good bond
 - Pictured Cliffs, Fruitland, Kirtland, Ojo, Nacimiento – Inside/Outside plugs, no bond.

Proposal:

1. **Pump Plug #1** | Spot 13sx (3.1 bbl) Class III, 1.37 yield, 14.6ppg cement
 - a. 200' of cmt in 4-1/2" 10.5# casing from 7,040' – 7,240'
2. WOC, tag, pressure test plug & 4-1/2" casing to 560psi for 30min to determine integrity.
3. Execute plug design as proposed above.

**BH pressure is 30psi as of this AM. Will separate OJO/KIRTLAND plugs if BH pressure remains.*

Thanks,

Rustin Mikeska

P&A – Petroleum Engineer
Hilcorp Energy

From: Rustin Mikeska

Sent: Monday, November 20, 2023 10:22 AM

To: Kuehling, Monica, EMNRD <monica.kuehling@emnrd.nm.gov>; krennick@blm.gov

Cc: Max Weaver <mweaver@hilcorp.com>; Lee Murphy <lmurphy@hilcorp.com>; Michael Wissing <mwissing@hilcorp.com>; Priscilla Shorty <pshorty@hilcorp.com>; Tammy Jones <tajones@hilcorp.com>; Brice Clyde - (C) <Brice.Clyde@hilcorp.com>; dporch@blm.gov

Subject: RE: [EXTERNAL] Hilcorp P&A Variance Request: San Juan 30-5 Unit 47

Good morning All – We have been unsuccessful at fishing the tbg thus far.

Completed:

- PU on tbg, stuck – stretch calcs suggested tbg is stuck in the open interval @ ~EOT.
- Jet cut tbg @ 7,790' below proposed Plug #1 – tbg stuck.
- Free point shows pipe 98% free @ 7,263', 4% free @ 7,604'
- Chemical cut tbg @ 7,263', POOH w/ tbg.
- RIH w/ overshot & fishing BHA – will attempt to jar out tbg fish today.

Proposed:

1. Fish remaining tbg down to cut @ 7,990'.
2. Execute NOI as proposed.

**Additionally, BH pressure of 50psi was found on the well after digging up valves and correctly identifying valves. We will monitor and stop at Kirtland to discuss path forward if BH pressure still exists.*

Call with any questions/concerns.

Thanks,

Rustin Mikeska

P&A – Petroleum Engineer

Cell: (254) 913-6777

Office: (713) 289-2931

rmikeska@hilcorp.com



Released to Imaging: 12/22/2023 11:26:15 AM

From: Kuehling, Monica, EMNRD <monica.kuehling@emnrd.nm.gov>
Sent: Monday, November 20, 2023 10:04 AM
To: Rustin Mikeska <rmikeska@hilcorp.com>; krennick@blm.gov
Cc: Max Weaver <mweaver@hilcorp.com>; Lee Murphy <lmurphy@hilcorp.com>; Michael Wissing <mwissing@hilcorp.com>; Priscilla Shorty <pshorty@hilcorp.com>; Tammy Jones <tajones@hilcorp.com>
Subject: RE: [EXTERNAL] Hilcorp P&A Variance Request: San Juan 30-5 Unit 47

Hello Rustin

Please send email with update on the above well. Our Division is not being kept in the loop

Thank you

Monica Kuehling
Compliance Officer Supervisor
Deputy Oil and Gas Inspector
New Mexico Oil Conservation Division
North District
Office Phone: 505-334-6178 ext. 123
Cell Phone: 505-320-0243
Email - monica.kuehling@emnrd.nm.gov

From: Rustin Mikeska <rmikeska@hilcorp.com>
Sent: Thursday, November 16, 2023 2:14 PM
To: krennick@blm.gov; Kuehling, Monica, EMNRD <monica.kuehling@emnrd.nm.gov>

Cc: Max Weaver <mweaver@hilcorp.com>; Lee Murphy <lmurphy@hilcorp.com>; Michael Wissing <mwissing@hilcorp.com>; Priscilla Shorty <pshorty@hilcorp.com>; Tammy Jones <tajones@hilcorp.com>

Subject: [EXTERNAL] Hilcorp P&A Variance Request: San Juan 30-5 Unit 47

Monica/Kenny,

We moved onto the following well this morning and found the tubing to be stuck deep in zone (stretch calcs).

We are requesting the following:

San Juan 30-5 Unit 47

3003921070

Completed:

- PU on tbg, stuck – stretch calcs suggest tbg is stuck in the open interval @ ~EOT.

Proposal:

1. Jet cut tbg @ 7,790' below proposed Plug #1.
2. Execute NOI as proposed.

*Will run CBL from CICR up to surface and submit proposed plugging design for approval.

No bradenhead pressure observed.

Thanks,

Rustin Mikeska

P&A – Petroleum Engineer

Cell: (254) 913-6777

Office: (713) 289-2931

rmikeska@hilcorp.com



District I
1625 N. French Dr., Hobbs, NM 88240
Phone:(575) 393-6161 Fax:(575) 393-0720
District II
811 S. First St., Artesia, NM 88210
Phone:(575) 748-1283 Fax:(575) 748-9720
District III
1000 Rio Brazos Rd., Aztec, NM 87410
Phone:(505) 334-6178 Fax:(505) 334-6170
District IV
1220 S. St Francis Dr., Santa Fe, NM 87505
Phone:(505) 476-3470 Fax:(505) 476-3462

State of New Mexico
Energy, Minerals and Natural Resources
Oil Conservation Division
1220 S. St Francis Dr.
Santa Fe, NM 87505

CONDITIONS

Action 293098

CONDITIONS

Operator: HILCORP ENERGY COMPANY 1111 Travis Street Houston, TX 77002	OGRID: 372171
	Action Number: 293098
	Action Type: [C-103] Sub. Plugging (C-103P)

CONDITIONS

Created By	Condition	Condition Date
mkuehling	well plugged 12/9/2023	12/22/2023