

Office
District I
1625 N. French Dr., Hobbs, NM 88240
District II
1301 W. Grand Ave., Artesia, NM 88210
District III
1000 Rio Brazos Rd., Aztec, NM 87410
District IV
1220 S. St. Francis Dr., Santa Fe, NM
87505

State of New Mexico
Energy, Minerals and Natural Resources

Form C-103
June 19, 2008

OIL CONSERVATION DIVISION
1220 South St. Francis Dr.
Santa Fe, NM 87505

WELL API NO. 30-025-21336
5. Indicate Type of Lease STATE <input checked="" type="checkbox"/> FEE <input type="checkbox"/>
6. State Oil & Gas Lease No. E-9141
7. Lease Name or Unit Agreement Name GR Unit
8. Well Number 01
9. OGRID Number 234255
10. Pool name or Wildcat Grama Ridge, Morrow
11. Elevation (Show whether DR, RKB, RT, GR, etc.) 3,664' GL

SUNDRY NOTICES AND REPORTS ON WELLS
(DO NOT USE THIS FORM FOR PROPOSALS TO DRILL OR TO DEEPEN OR PLUG BACK TO A DIFFERENT RESERVOIR. USE "APPLICATION FOR PERMIT" (FORM C-101) FOR SUCH PROPOSALS.)

1. Type of Well: Oil Well ☐ Gas Well ☒ Other: Storage

2. Name of Operator
Enstor Grama Ridge Transportation and Storage, LLC

3. Address of Operator
10375 Richmond Ave., Suite 1900, Houston, TX 77042

4. Well Location
Unit Letter **E** : **1980** feet from the **North** line and **660** feet from the **West** line
Section **3** Township **22S** Range **34E** NMPM **Lea** County

12. Check Appropriate Box to Indicate Nature of Notice, Report or Other Data

NOTICE OF INTENTION TO:

PERFORM REMEDIAL WORK ☐ PLUG AND ABANDON ☐
TEMPORARILY ABANDON ☐ CHANGE PLANS ☐
PULL OR ALTER CASING ☐ MULTIPLE COMPL ☐
DOWNHOLE COMMINGLE ☐

SUBSEQUENT REPORT OF:

REMEDIAL WORK ☐ ALTERING CASING ☐
COMMENCE DRILLING OPNS. ☐ P AND A ☐
CASING/CEMENT JOB ☐

OTHER: ☐

OTHER: **Workover** ☒


13. Describe proposed or completed operations. (Clearly state all pertinent details, and give pertinent dates, including estimated date of starting any proposed work). SEE RULE 1103. For Multiple Completions: Attach wellbore diagram of proposed completion or recompletion.

Workover Operation: Killed well; pulled tubing & packer; ran integrity log on cemented casing; ran new tubing & new packer; reperforated; re-fraced; cleaned out wellbore; put back into service. Performed Mechanical Integrity Test on Annulus, witnessed by NMOCD Compliance Officer Kerry Fortner.

Spud Date:

Rig Release Date:

I hereby certify that the information above is true and complete to the best of my knowledge and belief.

SIGNATURE  TITLE: **Sr. Production Engineer** DATE **01/10/2024**

Type or print name **Jory Coon** E-mail address: **Jory.Coon@enstorinc.com** PHONE: **281-374-3061**

For State Use Only

APPROVED BY:  TITLE **Compliance Officer A** DATE **1/16/24**

Conditions of Approval (if any):



End of Job Report

GRM

Well Number

Unit #001

Single Stage



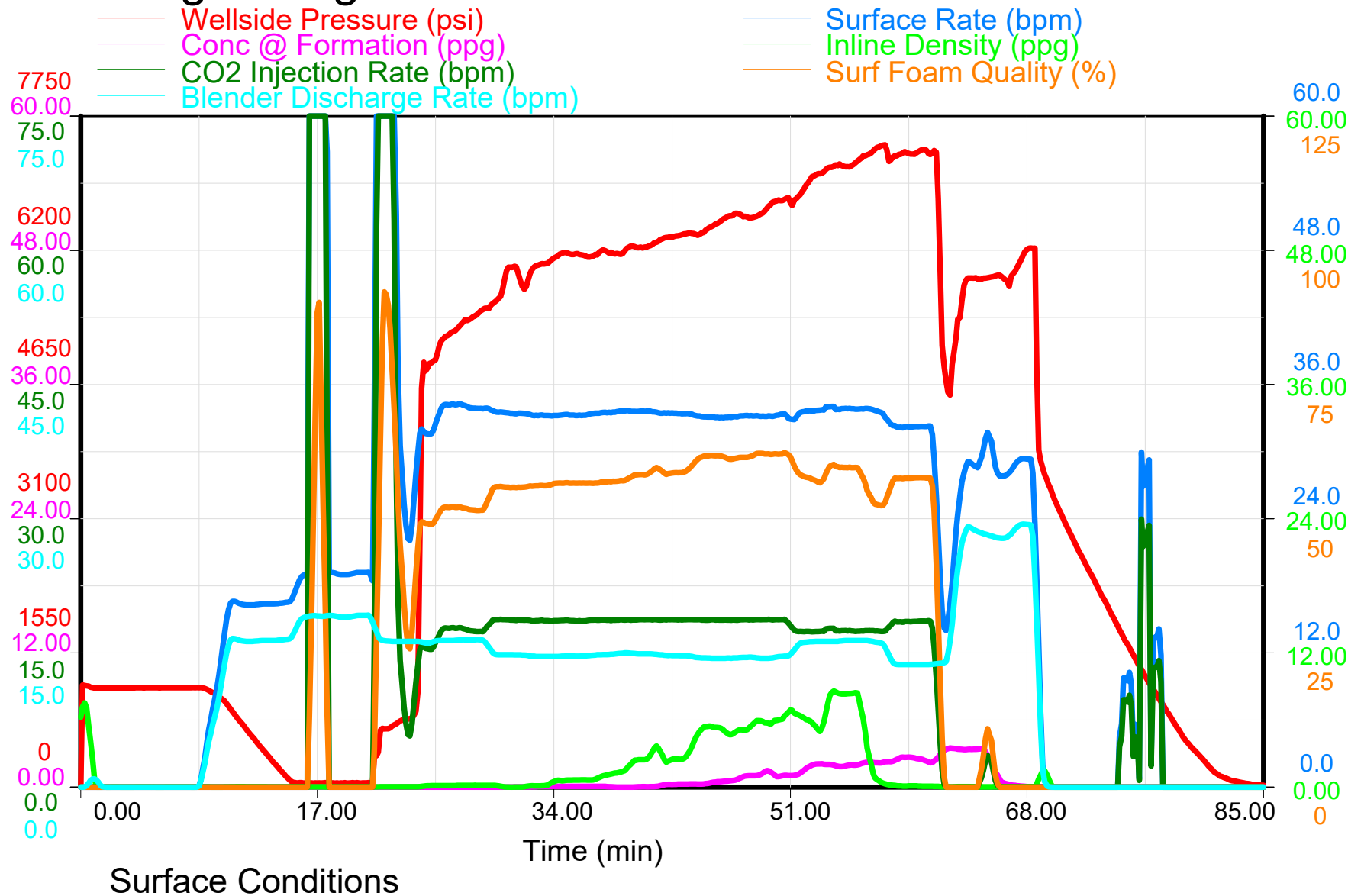
Prepared for

**Enstor Grama Ridge Storage and
Transportation**

5/10/2023

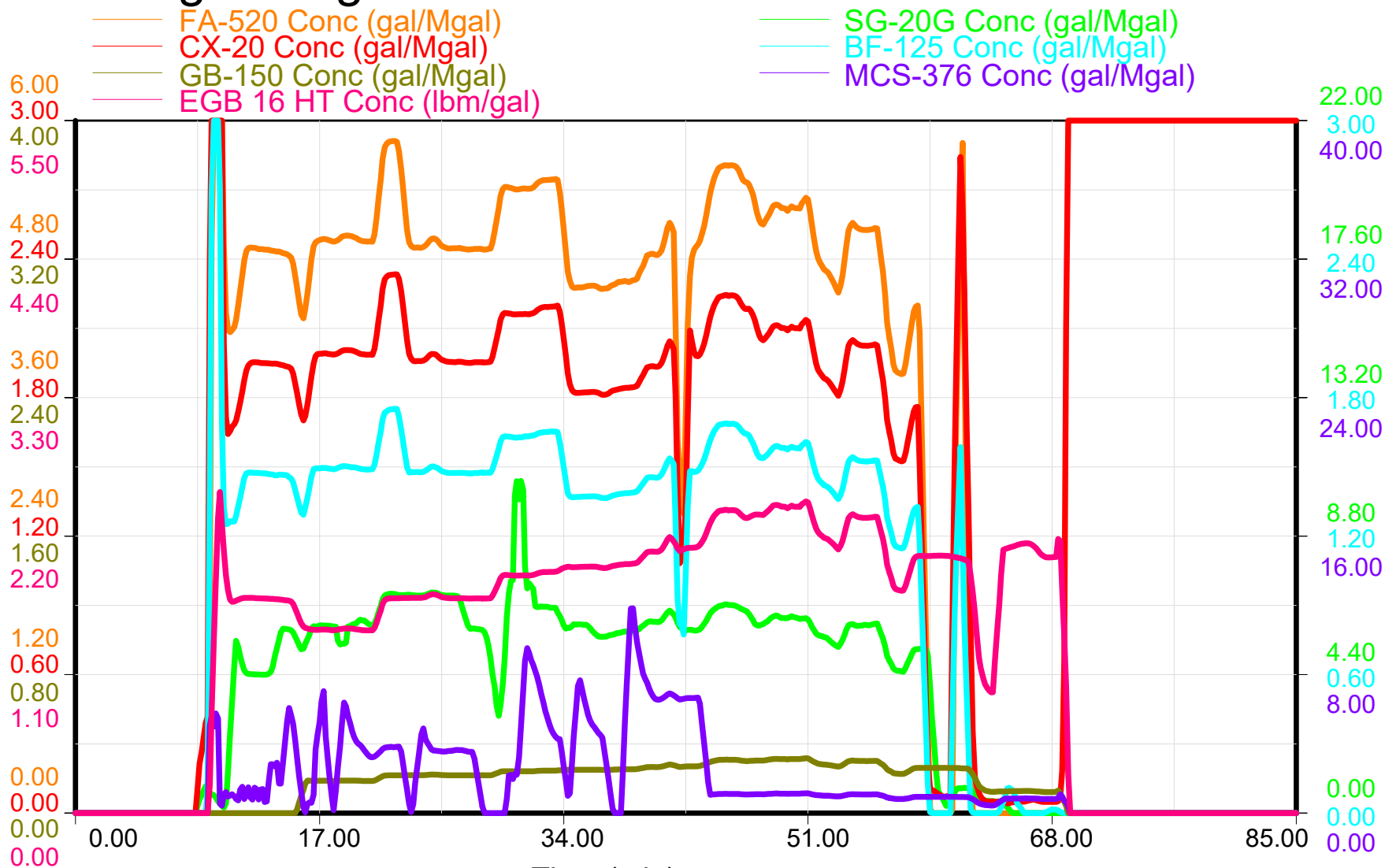
Enstor GRS & T - GRM Unit #001

Single Stage



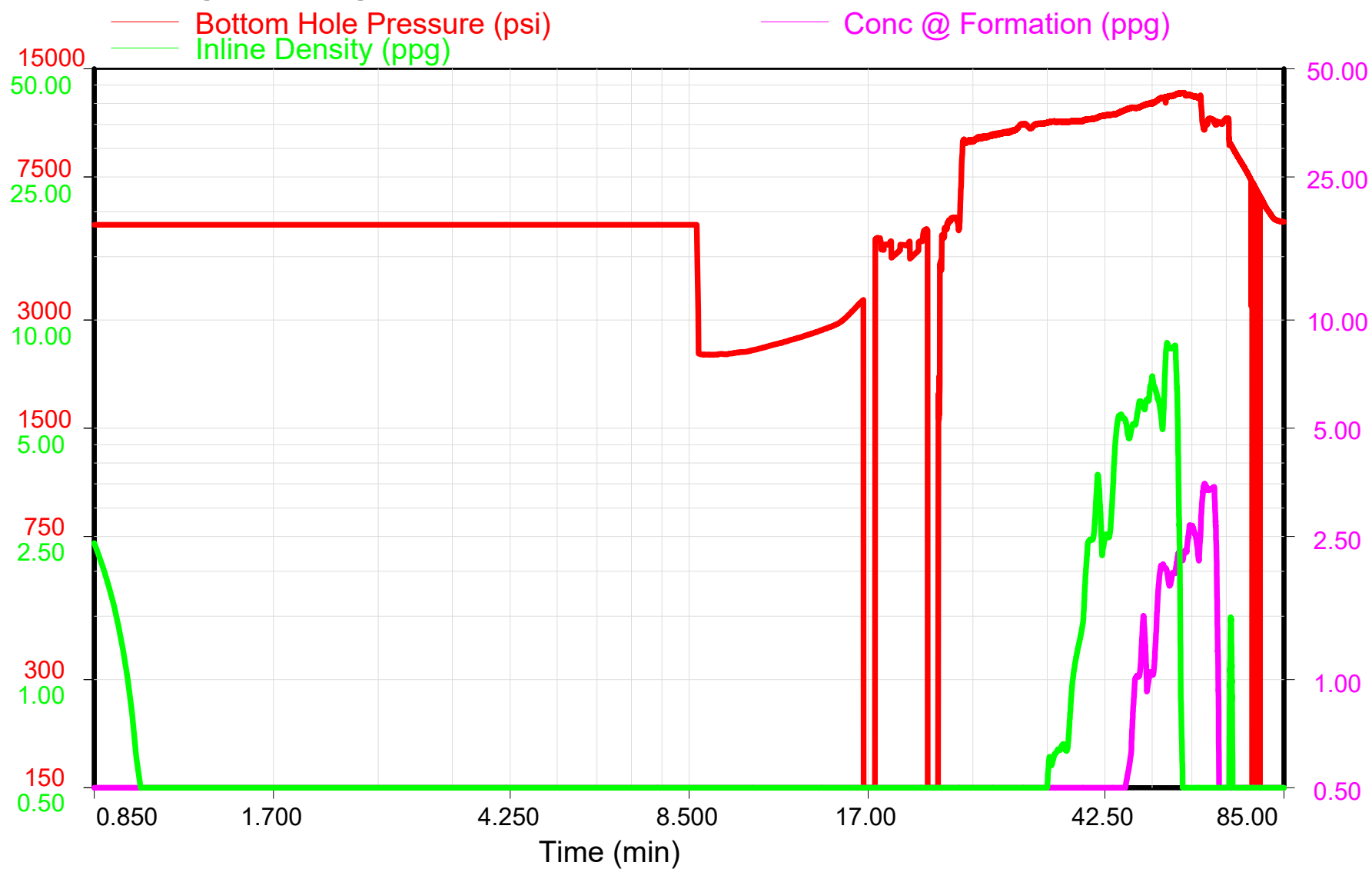
Enstor GRS & T - GRM Unit #001

Single Stage



Enstor GRS & T - GRM Unit #001

Single Stage



Nolte



Pump Schedule [As Pumped]

Stage 1

Treatment Schedule

Step #	Fluid	Step Type	Cln. Vol. (bbls)	Avg Pressure (psi)	Avg Rate (bpm)	Slurry Volume (bbls)	Proppant	Cum. Prop. (lbs)	Avg Conc. (ppga)	Step Pumping Time (min)	Cum. Pumping Time (min)
1	20# Linear Gel		48	895	12.6	48.0	<None>	2	0.020	3.800	3.800
2	ZFrac 20	Pad	324	2,243	19.0	324.3	<None>	781	0.032	19.083	22.883
3	ZFrac 20	Slurry	76	6,070	33.3	77.7	20/40 Carbobond Lite	2,084	0.178	5.300	28.183
4	ZFrac 20	Slurry	75	6,234	33.5	81.9	20/40 Carbobond Lite	8,330	0.840	5.517	33.700
5	ZFrac 20	Slurry	76	6,494	33.2	91.6	20/40 Carbobond Lite	22,775	1.780	6.317	40.017
6	ZFrac 20	Slurry	49	6,814	33.3	62.7	20/40 Carbobond Lite	35,373	2.420	4.133	44.150
7	ZFrac 20	Slurry	68	7,236	33.8	83.5	20/40 Carbobond Lite	49,924	2.266	5.133	49.283
8	20# Linear Gel	Flush	236	651	2.5	236.8	<None>	50,473	1.845	11.300	60.583



Enstor GRS&T
GRM Unit #001
Stage 1

Stage Data		
Date	5/10/2023	
Starting Time	6:31 PM	hh:mm
Opening Pressure	1,178	psi
Break Pressure	4,972	psi
Maximum Pressure	7,431	psi
Average Pressure	6,577	psi
Maximum Rate	34.3	bpm
Average Rate	33.4	bpm
20/40 Carbobond Lite	48,140	lbs
Max Sand Conc	3.62	ppg
ISIP	3,893	psi
Frac Gradient	0.73	psi/ft
Clean Total	952	bbls
Slurry Total	1443	bbls
BIO GQ 12-3	15	gal
CS-15	34	gal
CX-20	60	gal
EGB 16 HT	55	lbs
FA-520	149	gal
GB-150	10	gal
MCS-376	34	gal
SG-20G	161	gal
BF-125	51	gal
CO2	158	Tons
Ending Time	7:31 PM	hh:mm

RPT #	Report Date	24 Hour Description	ENSTOR GRAMA RIDGE STORAGE	GRMU #1
1	April 07, 2023	Force Pressure Control arrived onsite with the mixing plant. Hotshot trucks delivered the 1st load of equipment from Ranger. Hotshot trucks delivered Expro's casing/tubing pulling equipment. Hotshot trucks delivered Patterson / Prime's equipment and staged onsite. Hotshot trucks delivered the 2nd load of equipment from Ranger. RU Ranger's Pump & Tank, RU Force's Mixing plant, blend 30 bbl HEC pill and pump followed by 225 bbls of 6% KCL water. SITP: zero (0) psi.		
2	April 08, 2023	Monitored well: Zero (0) psi. Prime's BOP Technican arrived and prepared the 11" BOPs. KLX Wireline arrived onsite. Ranger's Crew & WO Rig arrived onsite. Ranger arrived onsite, spotted basebeam, and rigged up WO Rig. RU KLX Wireline, made a 4.625" OD JR/CCL run, then MU and RIH with 4.5" OD RBP and attempted to set at 1,520', but had a failure and fell to bottom, confirmed with GR/CCL run. Made up 4.625" OD RBP and set at 1,570', confirmed set. ND Tree, NU BOPs. Filled tbg with 35 bbls.		
3	April 09, 2023	Ran 2-7/8" work string and retrieved the RBP from 1,570'. Ranger stated that they had serious concerns with the rigs capabilities to lift the weight of full string of injection tubing. While Ranger worked on a new plan, Enstor implemented a "work-a-round" plan to cut the tubing string and pull out in two pulls. KLX Wireline rigged up and stripped through the spear, pulled 180K on the tubing and fired the jet cutter at 7,484'. POOH laying down 5-1/2" tubing.		
4	April 10, 2023	Weather Delay, Had trouble making up lift nubblings. Tubing looked as if it was damaged during the previous running. Fabricated a lift nubbing that could be made up with the tongs, continued pulling 5-1/2" tubing. Near Miss Incident occurred: nubbing was knocked out of joint of tubing being laid down by the elevators, then the jt slid out of the elevators and fell on the rig floor. A Safety Stand Down was called and an investigation was launched. Pulled 77 more jts (173 jts & cut jt), RD Expro, RU 2-7/8" tools.		
5	April 11, 2023	RIH with the 2-7/8" work string & 5-1/2" spear. Stabbed the top of the cut 5-1/2" tubing at approximately 7,584' with the 5-1/2" spear. Unset the packer utilizing Baker Hughes procedure, let the rubbers relax, confirmed packer unset. POOH with 241 jts of 2-7/8" work string. Changed out Ranger's tubing tongs to Expro's 5-1/2" tongs. POOH and laid down 94 joints of 5-1/2", 20 ppf, P-110, SLX tubing. Recovered 5-1/2 RBP & Jet Cutter. POOH and laid down 41 joints, 3-1/2" 9.3 ppf, L-80, UFJ tubing.		
6	April 12, 2023	POOH & laid down the 3-1/2" Hornet Packer, Rigged Down Expro's casing equipment, Hauled water, spotted & rigged up Empire Wireline, Ran GR to 13,025', POOH, pick up & RIH with caliper to 13,025', logged out at 12 fpm.		
7	April 13, 2023	Logged OOH at 12 fpm from 5,775' to Surface, Ran CBL, No fluid detected, POOH & rigged down Empire wireline, Changed out Ranger's Workover Rig Block & drill line, changed out BOP Rams, Waited and offloaded the new 5-1/2", 20 ppf, P-110 CY (Benteler) Cobra GT tubing, Waited on the remaining tubing, handling equipment, packer & wireline unit.		
8	April 14, 2023	Offloaded tubing, waited on KLX wireline, Changed out BOP Rams, Rigged up WL, ran 2 x GR, RIH & set Packer @ 12,741', POOH, Rigged down KLX WL, filled annulus w/ 100 bbls fluid, allow to invert, Rigged up KLX WL, RIH w/ CBL, Tagged fluid @ 7,500'; allowed to invert, tagged @ 7,650', allowed to invert, tagged aerated fluid at 7,650', found fluid at 8,079', allow to invert.		
9	April 15, 2023	Waiting, POOH & Rigged down KLX WL, Tallied 3-1/2" tubing, Orientated 3rd party vendors, Offloaded & Rigged up Southern Connection & Gatorhawk, TIH while torque turning to 3,500 ft-lbs & testing 33 joints of 3-1/2" tubing (1,340.84') to 3,500 psi for 30 seconds each. Changed out from 3-1/2" to 5-1/2" handling equipment, repaired rig, TIH while torque turning to 15,000 ft-lbs & testing the new 5-1/2" tubing to 3,500 psi for 30 seconds each to the depth of 3,445' at report time.		
10	April 16, 2023	TIH while torque turning to 15,000 ft-lbs & testing the 232 joints of 5-1/2" tubing to 3,500 psi for 30 seconds each to the depth of 11,070' at report time.		
11	April 17, 2023	TIH while torque turning to 15,000 ft-lbs & testing the additional 7 joints (total of 239 joints) of 5-1/2" tubing to 3,500 psi for 30 seconds each to the depth of 11,361'. Secured well, Stood down due excess string weight, Discussing alternative options to continue running remaining casing safely, Waiting on Orders.		
12	April 18, 2023	Waiting on Orders, Rigged down & Released Ranger Rig and equipment. Received & rigged up Pegaso Workover Rig #104 and equipment. Continued RIH with 5-1/2" tubing, tagged and worked the on/off tool into the 5-1/2" liner @ 11,474'. TIH while torque turning to 15,000 ft-lbs & testing the additional 36 joints (total of 275 joints) of 5-1/2" tubing to 3,500 psi for 30 seconds each and tagged the production packer @ 12,741', un-jayed from the packer & laid down 2 jts, and calculating spacing out at report time.		
13	April 19, 2023	Calculated & spaced out, speared hanger & landed out with 20K in compression on packer. Rigged down Gatorhawk & Southern Connection, pumped, lubricated & bleed 157 bbls of treated fluid into annulus, Performed MIT on annulus to 550 psi for 30 minutes (Good Test). Attempting to locate a wireline set RBP for the 5-1/2" tubing at report time.		
14	April 20, 2023	Locate RBP, Hauled off Patterson tools & Gatorhawk & Southern Connection equipment, Empire & KLX wireline Trucks arrived, waited on proper setting tool for RBP. Set 5-1/2" RBP @ 490', Nippled down the BOPs & installed the tree, Retrieved RBP, Rigged down PRIME's equipment. Rigged up & filled tbg with 100 bbls water, slight vacuum, monitored well, RIH with 1st 15' perforating gun.		
15	April 21, 2023	RIH w/ 15' perf gun tag at 12,746', pumped 29 bbls, applied 1,500 psi to ruptured disc, RIH Tag @ 12,819', POOH with live gun. R/D Force & Pegaso hauled off, waited on Fesco. Rigged up Fesco & lubricator, RIH w/ 2" bailer, tagged up at 13,050', POOH & R/D, Rigged up Empire, RIH with 15' perf gun, Perf from 13,002' to 13,010', POOH,		

RPT #	Report Date	24 Hour Description	ENSTOR GRAMA RIDGE STORAGE	GRMU #1
		RIH with 13' gun, perf from 12,994' to 12,981', POOH, RIH with 10' perf gun, perf from 12,921' to 12,911', POOH, RIH with 13' perf gun.		
16	April 22, 2023	Perforated 4th perforating run, 13' perfs with 6 spf from 12,859' to 12,846'. Perforated 5th perforating run, 20' perfs with 6 spf from 12,846' to 12,826'. Waited 30 mins before RIH to bottom. RIH with spent gun to 13,027' WLM, 500 psi tubing pressure. POOH, laid down tool string and rigged down Lubricator, Installed tree cap. Packed and tested void on the 11" 5M wellhead and the 11" 5M X 7-1/16" 5M Adaptor.		
17	May 08, 2023	Fesco arrived onsite and performed Site Specific Orientation. Spotted up Slickline truck and MU crossover and lubricator. Picked up bailer assembly and RIH and tagged fill at 13,050' WLM (13,036' RKB). [Bottom Perf @ 13,025' RKB]. POOH with slickline. RD Slickline and departed location. Cudd Pressure Control Frac equipment started arriving and spotting up on location. Laid out pressure lines from the Fluid pumps and from the CO2 Pumps to the wellhead.		
18	May 09, 2023	Wait on equip, Spotted and rigged up equipment, Nipped up the Goat head and lines, Installed restrains, Cudd having an issue with X-Link Gel, Tested all lines to 10K (Good Test), Shut down waiting on proper X-Link.		
19	May 10, 2023	Waited on proper X-Link gel, Tested cross linker and fluid on location, Held PJSM, opened well and had 1,178 psi, Frac'd well as procedure shown, ISITP = 3,893 psi, FSITP = 42 psi, rigged down and moved all Frac equipment off location, rigged up Cudd's coil tubing & Trionz's flow back iron, Nipped up CT BOPs, stabbed injector head, Rigging up CT at report time.		
20	May 11, 2023	Rigged up 2" CT, Moved flare stack, Pneumatic wing valves, test equipment, Finished rigging up CT & blew down reel, RIH while circulating & jetting with N2, tagged up @ 13,093', washed down to 13,188', circulated sweeps around, POOH with N2 to 11,398', gas at surface, swapped from frac tank to gas separator, RIH and jetted to 13,188', jetted on 12/64th choke, POOH jet to 11,398', Flowed well on various chokes from 12/64th to 20/64th.		
21	May 12, 2023	Flowed well on 20/64 choke, replaced flow meter & orifice plate, flowed well on 22/64th choke, RIH with CT to 13,188', pumped N2 @ 350 scf/min, continued to flow well on a 22/64th choke, POOH with CT to surface while pumping N2 @ 350 scf/min, continued to flow well on a 22/64th. Secured well, Nipped down CT, Nipped up the Crown valve, Finished Rigging down CT, Flow well on various chokes from 22/64th to 12/64th, 229 total bbls of fluid flowed back.		
22	May 13, 2023	Flowed well on various chokes from 16/64th to 30/64th, 191 total bbls of fluid flowed back.		
23	May 14, 2023	Flowed well on various chokes from 28/64th to 32/64th, 406 total bbls of fluid flowed back.		
24	May 15, 2023	Flowed well on various chokes from 32/64th to 36/64th, 487.5 total bbls fluid flowed back		
25	May 16, 2023	Flowed well on various chokes from 32/64th to 36/64th, 564.5 total bbls of fluid flowed back.		
26	May 17, 2023	Flowed well on 36/64th choke, 624.5 total bbls of fluid flowed back. Shut in well, read and recorded pressures, ISITP = 550 psi, FSITP @ 06:00 = 1,000 psi.		
27	May 18, 2023	Shut in well, read and recorded pressure, ISITP = 1,000 psi, FSITP = 1,200 psi. Performed MIT & Bradenhead test, Flow well on various chokes from 12/64th to 40/64th, 669.7 total bbls of fluid flowed back.		
28	May 19, 2023	Flowed well on various chokes from 32/64th to 36/64th, 741.4 total bbls of fluid flowed back.		
29	May 20, 2023	Flowed well on 34/64th choke, 806.1 total bbls of fluid flowed back.		
30	May 21, 2023	Flowed well on various chokes from 32/64th to 48/64th, 874 total bbls of fluid flowed back.		
31	May 22, 2023	Flowed well on various chokes from 42/64th to 48/64th, 934.9 total bbls of fluid flowed back.		
32	May 23, 2023	Flowed well on various chokes from 42/64th to 48/64th, 984.6 total bbls of fluid flowed back, Fluid weight 8.6 - 8.7 ppg.		
33	May 24, 2023	Flowed well on various chokes from 36/64th to 48/64th, 1,018 total bbls of fluid flowed back, Fluid weight 8.6 - 8.7 ppg. Problem with flare stack, Shut in well, read and record pressures, ISITP = 880 psi, FSITP = 1,000 psi.		
34	May 25, 2023	Repaired flare, flowed well, shut in well, rigged down & hauled off well testers equipment, prepared for remaining equipment to be hauled away tomorrow Facility personnel rigged up manifolds and flow line back to GRMU #1 wellhead. Turned over Operations.		

Hobbs District
 7431 N. Hobbs Dr., Hobbs, NM 88240
 Phone (505) 395-6131 Fax (505) 395-6725

State of New Mexico
 Energy, Minerals and Natural Resources Department
 Oil Conservation Division Hobbs District Office

BRADENHEAD TEST REPORT

Operator Name ENSTOR	API Number 30-025-21336
Property Name GRANA RIDGE	Well No. # 1

1. Surface Location

U.S. - Lat E	Section 3	Township 22S	Range 34E	Feet from 1980	NS Line FN	Feet from 660	EW Line FWL	County LEA
------------------------	---------------------	------------------------	---------------------	--------------------------	----------------------	-------------------------	-----------------------	----------------------

Well Status

T&D WELL YES	SHUT-IN YES	INJECTOR INJ	PRODUCER OIL	GAS	DATE 5-18-23
-----------------	----------------	-----------------	-----------------	-----	------------------------

OBSERVED DATA

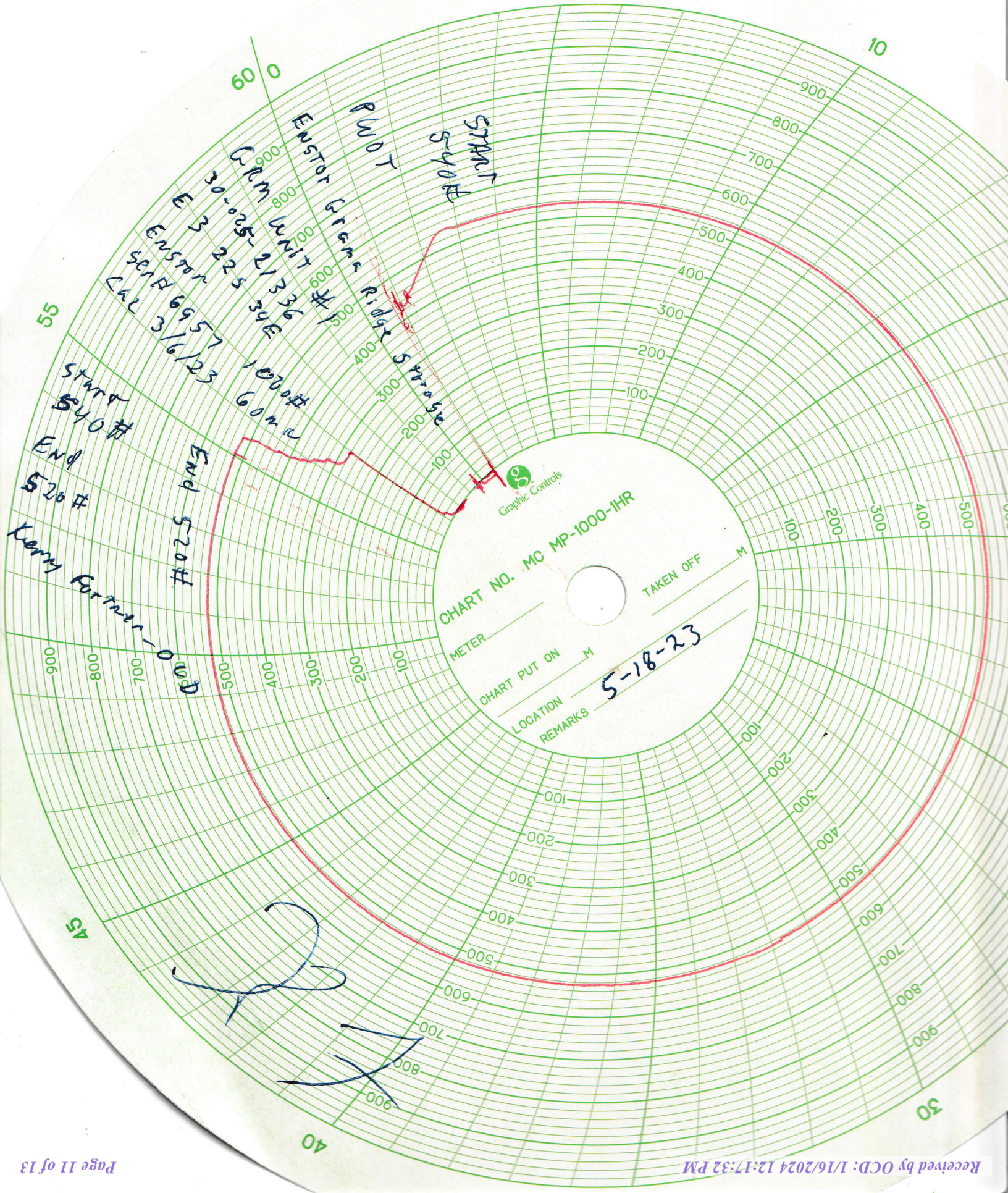
	(A) Surface	(B) Hole (1)	(C) Interval (2)	(D) Prod. Case	(E) Tubing
Pressure	0	0	N/A	0	1200
Flow Characteristics					
Puff	Y/N	Y/N	Y/N	Y/N	CO2
Steady Flow	Y/N	Y/N	Y/N	Y/N	WTR
Surges	Y/N	Y/N	Y/N	Y/N	GAS X
Down to nothing	Y/N	Y/N	Y/N	Y/N	Type of Fluid Exposed for Weathered & exposed
Gas or Oil	Y/N	Y/N	Y/N	Y/N	
Water	Y/N	Y/N	Y/N	Y/N	

Remarks - Please state for each string (A,B,C,D,E) pertinent information regarding bleed down or continuous build up if applies.

Signature: Librado M. Marquez Jr.	OIL CONSERVATION DIVISION
Printed name: LIBRADO M. MARQUEZ JR.	Entered into RBDMS
Title: ENSTOR	Re-test
E-mail Address: jr.marquez@enstorinc.com	
Date: 5-18-23	
Phone: 575-704-4575	
Witness: Kerry Fortner - OCD	

INSTRUCTIONS ON BACK OF THIS FORM

5



Enstor

Field: Grama Ridge Morrow

WELL

01

Page 12 of 13

Lease/County: GRA State/Lea County

DATE

04/19/2023

Location: E Unit, Section 3, Township 22S, Range 34E

API #:

30-025-21336

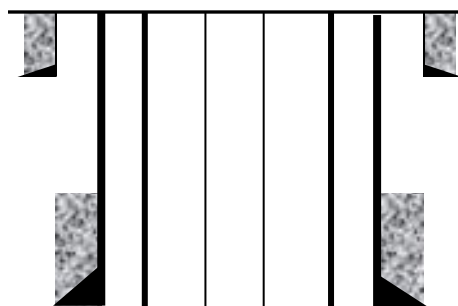
DRAWING STATUS

CURRENT

DRAWING BY

J. Coon – Sr. Production Engr.

RKB	14'
Annular Fluid	8.3 ppg 6% KCL
Elev	3,644'
Well Head	Cameron: 16" S/900 x 16" CIW Csg Hd, 16" S/900 x 10" 1,500# WP CIW csg hd spool, 10" 5M WPx10" WP CIW type SJ tbg spool c/w 2 - 2" 10M std outlets, Type F CIW 10" BTM flange w/ 2 - 2 9/16" master valve & 1 - 1-13/16" bore wing valve, HB-A tbg hanger, 2-7/8" EUE x 2-7/8" hydril tbg



16" 65# J-55 8rd @ 370'
CTOC @ surface, tested to
1,000 psi for 30 min on
06/02/1965.

SITP: 3,400 psi
MASP: 5,100 psi
BHP: 4,500 psi
BHT: 176 °F

Completion Detail		
	Type	Depth
1	270 jts 5-1/2" 20# P-110 CY Cobra GT	11,397'
2	Crossover - 5-1/2", 20 ppf, P-110 CY Cobra GT Box x 3-1/2", 9.2 ppf, P-110 EY UFJ Pin	11,398'
3	33 jts 3-1/2" 9.2# P-110 EY, Ultra FJ tbg & 3-1/2", 9.2 ppf P-110 EY UFJ Box x 2-7/8" EUE 8rd Pin	12,735'
4	Crossover - 4-1/2" x 2-7/8" EUE 8rd BXP Blank Profile L-10 On/Off Tool	12,737'
5	450-237 Hornet Retrievable Packer	12,741'
6	2-7/8" L-80 EUE 8rd X 6" Pup Joint	12,744'
7	2-7/8" Wireline Re-Entry Guide with Pump-out-Plug / EOT @ 12,745'	12,745'

10-3/4" 51# / 55.5# J-55 / N-80 8rd @ 5,643', TOC @ 3,615', tested to 3,000 psi for 30 min.

On 11/27/1990 Halliburton pumped 60,000 gallons of Alcofoam with 29,000 lbs sand. Average rate was 33.5 BPM with WHTP of 8,510 psi ISIP of 7,046 psi.

MicroVertilog indicates 7-5/8" casing w/ 64% DOP (OD) at 6,395' - 6,427' & 69% DOP (OD) at 5,927' - 5,960' & 64% DOP (OD) at 6,093' - 6,126'

On 05/10/2023 CUDD pumped 952 bbls of 24 ppg Linear / Cross-linked Gel along with 160 tons of CO₂ and 48,000 lbs resin coated Carbobond Lite 20/40 Ceramic Proppant. Average rate was 34 BPM with WHTP of 8,510 psi ISIP = 3,893 psi; 15 min SIP = 42 psi.

7-5/8" 29.7# / 33.7# N-80 / P-110 8rd @ 11,820', TOC @ 7,340' by CBL on 12/28/2005.
Tested csg to 2,500 psi for 30 min on 07/08/1965.

Baker 450-237 Model Hornet Retrievable Packer @ 12,741'

Morrow Perfs: 12,826' - 12,859' MD

Re-Perf: 04/22/2023: 12,826' - 12,846' MD

Re-Perf: 04/22/2023: 12,846' - 12,859' MD

Morrow: 04/22/2023: 12,911' - 12,921' MD

Morrow Perfs: 12,981' - 12,994' MD

Re-Perf: 04/22/2023: 12,981' - 12,994' MD

Morrow Perfs: 13,009' - 13,025' MD

Re-Perf: 04/22/2023: 13,010' - 13,025' MD

5-1/2" 23# P-110 liner f/ 11,474' - 13,252'
Tested to 5,000 psi for 30 min on 08/13/1965. CTOC @ TOL

TD 13,257' RKB
PBTD: 13,207'

Tubing Information		
Size	5-1/2"	3-1/2"
Weight	20#	9.2#
Grade	P-110 CY	P-110 EY
Thread	Cobra GT	Ultra FJ
Depth	11,397'	11,397' - 12,737'

Casing Information				Liner
Size	16"	10-3/4"	7-5/8"	5-1/2"
Weight	65#	51# / 55.5#	29.7# / 33.7#	23#
Grade/Thrd	J-55 8rd	J-55 / N-80	N-80 LTC	P-110 LTC
Hole Size	20"	13-3/4"	9-5/8"	6-5/8"
Depth	362'	5,643'	11,820'	11,474' - 13,252'
CMT	432 ft ³	1,080 ft ³	1,296 ft ³	281 ft ³
TOC	Surface	3,615'	7,270'	TOL

District I
1625 N. French Dr., Hobbs, NM 88240
Phone:(575) 393-6161 Fax:(575) 393-0720

District II
811 S. First St., Artesia, NM 88210
Phone:(575) 748-1283 Fax:(575) 748-9720

District III
1000 Rio Brazos Rd., Aztec, NM 87410
Phone:(505) 334-6178 Fax:(505) 334-6170

District IV
1220 S. St Francis Dr., Santa Fe, NM 87505
Phone:(505) 476-3470 Fax:(505) 476-3462

State of New Mexico
Energy, Minerals and Natural Resources
Oil Conservation Division
1220 S. St Francis Dr.
Santa Fe, NM 87505

CONDITIONS

Action 302277

CONDITIONS

Operator: ENSTOR GRAMA RIDGE STORAGE AND TRANSPORTATION 10375 Richmond Ave Houston, TX 77042	OGRID: 234255
	Action Number: 302277
	Action Type: [C-103] Sub. Workover (C-103R)

CONDITIONS

Created By	Condition	Condition Date
kfortner	None	1/16/2024