

Form 3160-3
(June 2015)FORM APPROVED
OMB No. 1004-0137
Expires: January 31, 2018

UNITED STATES
DEPARTMENT OF THE INTERIOR
BUREAU OF LAND MANAGEMENT
APPLICATION FOR PERMIT TO DRILL OR REENTER

| | | |
|--|---------------------------------------|---|
| 1a. Type of work: <input type="checkbox"/> DRILL <input type="checkbox"/> REENTER 1b. Type of Well: <input type="checkbox"/> Oil Well <input type="checkbox"/> Gas Well <input type="checkbox"/> Other 1c. Type of Completion: <input type="checkbox"/> Hydraulic Fracturing <input type="checkbox"/> Single Zone <input type="checkbox"/> Multiple Zone | | 5. Lease Serial No. 6. If Indian, Allottee or Tribe Name 7. If Unit or CA Agreement, Name and No. 8. Lease Name and Well No. |
| 2. Name of Operator | | 9. API Well No. 30-015-54636 |
| 3a. Address | 3b. Phone No. (include area code) | 10. Field and Pool, or Exploratory |
| 4. Location of Well (Report location clearly and in accordance with any State requirements. *) At surface At proposed prod. zone | | 11. Sec., T. R. M. or Blk. and Survey or Area |
| 14. Distance in miles and direction from nearest town or post office* | | 12. County or Parish |
| 13. State | | |
| 15. Distance from proposed* location to nearest property or lease line, ft. (Also to nearest drig. unit line, if any) | 16. No of acres in lease | 17. Spacing Unit dedicated to this well |
| 18. Distance from proposed location* to nearest well, drilling, completed, applied for, on this lease, ft. | 19. Proposed Depth | 20. BLM/BIA Bond No. in file |
| 21. Elevations (Show whether DF, KDB, RT, GL, etc.) | 22. Approximate date work will start* | 23. Estimated duration |
| 24. Attachments | | |

The following, completed in accordance with the requirements of Onshore Oil and Gas Order No. 1, and the Hydraulic Fracturing rule per 43 CFR 3162.3-3 (as applicable)

- | | |
|---|---|
| 1. Well plat certified by a registered surveyor. 2. A Drilling Plan. 3. A Surface Use Plan (if the location is on National Forest System Lands, the SUPO must be filed with the appropriate Forest Service Office). | 4. Bond to cover the operations unless covered by an existing bond on file (see Item 20 above). 5. Operator certification. 6. Such other site specific information and/or plans as may be requested by the BLM. |
|---|---|

| | | |
|-------------------------|----------------------|------|
| 25. Signature | Name (Printed/Typed) | Date |
| Title | | |
| Approved by (Signature) | Name (Printed/Typed) | Date |
| Title | | |
| Office | | |

Application approval does not warrant or certify that the applicant holds legal or equitable title to those rights in the subject lease which would entitle the applicant to conduct operations thereon.
 Conditions of approval, if any, are attached.

Title 18 U.S.C. Section 1001 and Title 43 U.S.C. Section 1212, make it a crime for any person knowingly and willfully to make to any department or agency of the United States any false, fictitious or fraudulent statements or representations as to any matter within its jurisdiction.

(Continued on page 2)

*(Instructions on page 2)



District I
1625 N. French Dr., Hobbs, NM 88240
Phone: (575) 393-6161 Fax: (575) 393-0720
District II
811 S. First St., Artesia, NM 88210
Phone: (575) 748-1283 Fax: (575) 748-9720
District III
1000 Rio Brazos Road, Aztec, NM 87410
Phone: (505) 334-6178 Fax: (505) 334-6170
District IV
1220 S. St. Francis Dr., Santa Fe, NM 87505
Phone: (505) 476-3460 Fax: (505) 476-3462

State of New Mexico
Energy, Minerals & Natural Resources
Department
OIL CONSERVATION DIVISION
1220 South St. Francis Dr.
Santa Fe, NM 87505

FORM C-102
Revised August 1, 2011
Submit one copy to appropriate
District Office
☐ AMENDED REPORT

WELL LOCATION AND ACREAGE DEDICATION PLAT

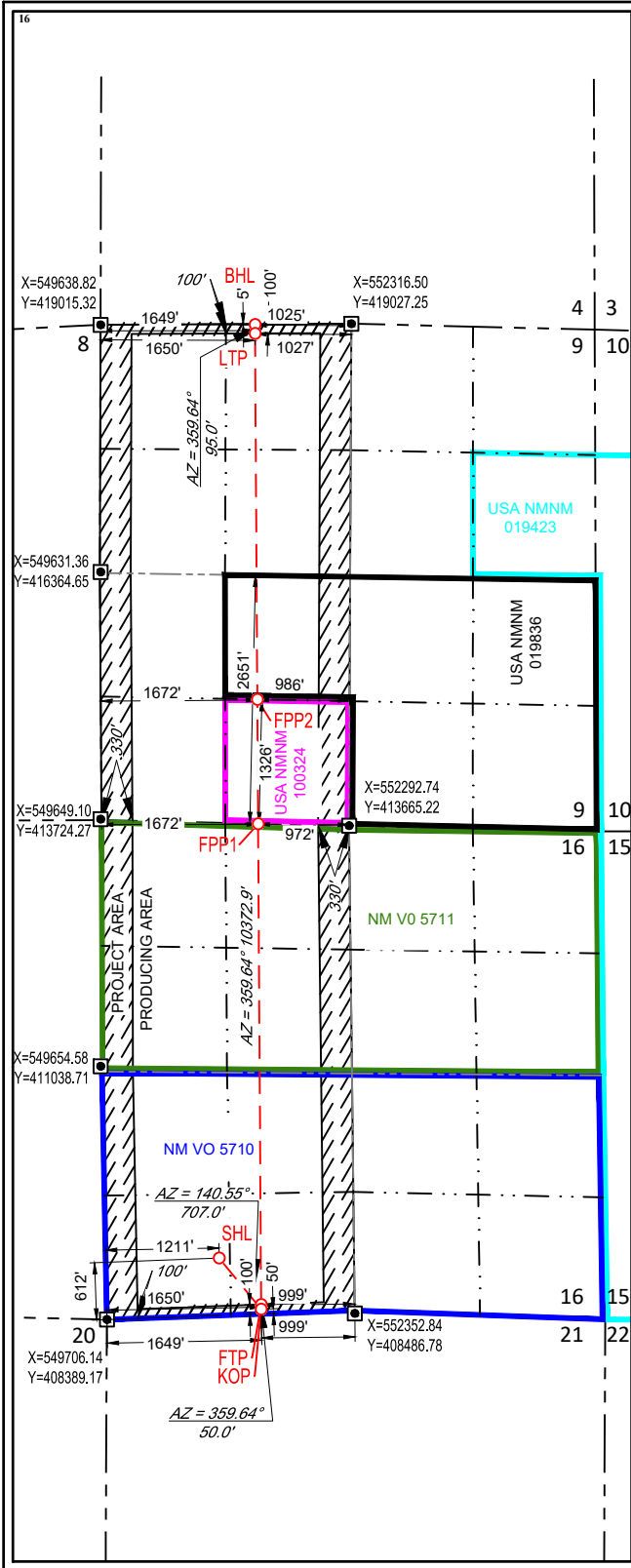
| | | |
|---|--|--|
| ¹ API Number 30-015-54636 | ² Pool Code 97494 | ³ Pool Name COTTONWOOD DRAW; BONE SPRING (O) |
| ⁴ Property Code 329796 | ⁵ Property Name SCHLITZ FED COM | ⁶ Well Number 142H |
| ⁷ OGRID No. 372043 | ⁸ Operator Name TAP ROCK OPERATING, LLC. | ⁹ Elevation 3427' |

| | | | | | | | | | |
|--------------------------------|---------------|------------------|---------------|--------------|-----------------------|---------------------------|------------------------|------------------------|----------------|
| ¹⁰ Surface Location | | | | | | | | | |
| UL or lot no. M | Section 16 | Township 25-S | Range 26-E | Lot Idn - | Feet from the 612' | North/South line SOUTH | Feet from the 1211' | East/West line WEST | County EDDY |

| | | | | | | | | | |
|--|--------------|------------------|---------------|--------------|---------------------|---------------------------|------------------------|------------------------|----------------|
| ¹¹ Bottom Hole Location If Different From Surface | | | | | | | | | |
| UL or lot no. C | Section 9 | Township 25-S | Range 26-E | Lot Idn - | Feet from the 5' | North/South line NORTH | Feet from the 1649' | East/West line WEST | County EDDY |

| | | | |
|--------------------------------------|-------------------------------|----------------------------------|-------------------------|
| ¹² Dedicated Acres 640 | ¹³ Joint or Infill | ¹⁴ Consolidation Code | ¹⁵ Order No. |
|--------------------------------------|-------------------------------|----------------------------------|-------------------------|

No allowable will be assigned to this completion until all interests have been consolidated or a non-standard unit has been approved by the division.



NEW MEXICO EAST
NAD 1983

SURFACE LOCATION (SHL)

612' FSL - SEC. 16
1211' FWL - SEC. 16
X=550904 Y=409046
LAT.: N 32.1245423
LONG.: W 104.3024293

KICK OFF POINT (KOP)

50' FSL - SEC. 16
1649' FWL - SEC. 16
X=551354 Y=408500
LAT.: N 32.1230413
LONG.: W 104.3009787

FIRST TAKE POINT (FTP)

100' FSL - SEC. 16
1650' FWL - SEC. 16
X=551353 Y=408550
LAT.: N 32.1231788
LONG.: W 104.3009797

FED. PERF. POINT (FPP1)

0' FNL - SEC. 16
1672' FWL - SEC. 16
X=551321 Y=413687
LAT.: N 32.1373000
LONG.: W 104.3010783

FED. PERF. POINT (FPP2)

1326' FSL - SEC. 9
1672' FWL - SEC. 9
X=551313 Y=415013
LAT.: N 32.1409453
LONG.: W 104.3011037

LAST TAKE POINT (LTP)

100' FNL - SEC. 9
1650' FWL - SEC. 9
X=551289 Y=418923
LAT.: N 32.1516928
LONG.: W 104.3011788

BOTTOM HOLE LOCATION (BHL)

5' FNL - SEC. 9
1649' FWL - SEC. 9
X=551288 Y=419018
LAT.: N 32.1519539
LONG.: W 104.3011806

¹⁷OPERATOR CERTIFICATION

I hereby certify that the information contained herein is true and complete to the best of my knowledge and belief, and that this organization either owns a working interest or unleased mineral interest in the land including the proposed bottom hole location or has a right to drill this well at this location pursuant to a contract with an owner of such a mineral or working interest, or to a voluntary pooling agreement or a compulsory pooling order heretofore entered by the division.

Cory Walk 7-28-23
Signature Date

Cory Walk
Printed Name

cory@permitswest.com
E-mail Address

¹⁸SURVEYOR CERTIFICATION

I hereby certify that the well location shown on this plat was plotted from field notes of actual surveys made by me or under my supervision, and that the same is true to the best of my belief.

04/06/2023

Date of Survey
Signature and Seal of Professional Surveyor

RAMON DOMINGUEZ
NEW MEXICO
24508
PROFESSIONAL SURVEYOR

6/7/2023 12:19:18 PM
Certificate Number



State of New Mexico
Energy, Minerals and Natural Resources Department

Submit Electronically
Via E-permitting

Oil Conservation Division
1220 South St. Francis Dr.
Santa Fe, NM 87505

NATURAL GAS MANAGEMENT PLAN

This Natural Gas Management Plan must be submitted with each Application for Permit to Drill (APD) for a new or recompleted well.

Section 1 – Plan Description

Effective May 25, 2021

I. Operator: _____ Tap Rock Operating LLC _____ **OGRID:** _____ 372043 _____ **Date:** _11/6/2023

II. Type: ☒ Original ☐ Amendment due to ☐ 19.15.27.9.D(6)(a) NMAC ☐ 19.15.27.9.D(6)(b) NMAC ☐ Other.

If Other, please describe: _____

III. Well(s): Provide the following information for each new or recompleted well or set of wells proposed to be drilled or proposed to be recompleted from a single well pad or connected to a central delivery point.

| Well Name | API | ULSTR | Footages | Anticipated Oil BBL/D | Anticipated Gas MCF/D | Anticipated Produced Water |
|----------------------|-----|--------------------|-------------------|-----------------------|-----------------------|----------------------------|
| Schlitz Fed Com 142H | | Sec 16, T25S R 26E | 612 FSL, 1211 FWL | 1589 | 4500 | 7500 |
| | | | | | | |

IV. Central Delivery Point Name: ___ Schlitz Fed Com CDP ___ [See 19.15.27.9(D)(1) NMAC]

V. Anticipated Schedule: Provide the following information for each new or recompleted well or set of wells proposed to be drilled or proposed to be recompleted from a single well pad or connected to a central delivery point.

| Well Name | API | Spud Date | TD Reached Date | Completion Commencement Date | Initial Flow Back Date | First Production Date |
|----------------------|-----|-----------|-----------------|------------------------------|------------------------|-----------------------|
| Schlitz Fed Com 142H | | 2/1/23 | 2/20/23 | 4/1/23 | 4/30/23 | 4/30/23 |
| | | | | | | |

VI. Separation Equipment: ☒ Attach a complete description of how Operator will size separation equipment to optimize gas capture.

VII. Operational Practices: ☒ Attach a complete description of the actions Operator will take to comply with the requirements of Subsection A through F of 19.15.27.8 NMAC.

VIII. Best Management Practices: ☒ Attach a complete description of Operator's best management practices to minimize venting during active and planned maintenance.

Section 2 – Enhanced Plan**EFFECTIVE APRIL 1, 2022**

Beginning April 1, 2022, an operator that is not in compliance with its statewide natural gas capture requirement for the applicable reporting area must complete this section.

☒ Operator certifies that it is not required to complete this section because Operator is in compliance with its statewide natural gas capture requirement for the applicable reporting area.

IX. Anticipated Natural Gas Production:

| Well | API | Anticipated Average Natural Gas Rate MCF/D | Anticipated Volume of Natural Gas for the First Year MCF |
|------|-----|--|--|
| | | | |
| | | | |

X. Natural Gas Gathering System (NGGS):

| Operator | System | ULSTR of Tie-in | Anticipated Gathering Start Date | Available Maximum Daily Capacity of System Segment Tie-in |
|----------|--------|-----------------|----------------------------------|---|
| | | | | |
| | | | | |

XI. Map. ☐ Attach an accurate and legible map depicting the location of the well(s), the anticipated pipeline route(s) connecting the production operations to the existing or planned interconnect of the natural gas gathering system(s), and the maximum daily capacity of the segment or portion of the natural gas gathering system(s) to which the well(s) will be connected.

XII. Line Capacity. The natural gas gathering system ☐ will ☐ will not have capacity to gather 100% of the anticipated natural gas production volume from the well prior to the date of first production.

XIII. Line Pressure. Operator ☐ does ☐ does not anticipate that its existing well(s) connected to the same segment, or portion, of the natural gas gathering system(s) described above will continue to meet anticipated increases in line pressure caused by the new well(s).

☐ Attach Operator's plan to manage production in response to the increased line pressure.

XIV. Confidentiality: ☐ Operator asserts confidentiality pursuant to Section 71-2-8 NMSA 1978 for the information provided in Section 2 as provided in Paragraph (2) of Subsection D of 19.15.27.9 NMAC, and attaches a full description of the specific information for which confidentiality is asserted and the basis for such assertion.

Section 3 - Certifications

Effective May 25, 2021

Operator certifies that, after reasonable inquiry and based on the available information at the time of submittal:

☒ Operator will be able to connect the well(s) to a natural gas gathering system in the general area with sufficient capacity to transport one hundred percent of the anticipated volume of natural gas produced from the well(s) commencing on the date of first production, taking into account the current and anticipated volumes of produced natural gas from other wells connected to the pipeline gathering system; or

☐ Operator will not be able to connect to a natural gas gathering system in the general area with sufficient capacity to transport one hundred percent of the anticipated volume of natural gas produced from the well(s) commencing on the date of first production, taking into account the current and anticipated volumes of produced natural gas from other wells connected to the pipeline gathering system.

If Operator checks this box, Operator will select one of the following:

Well Shut-In. ☐ Operator will shut-in and not produce the well until it submits the certification required by Paragraph (4) of Subsection D of 19.15.27.9 NMAC; or

Venting and Flaring Plan. ☐ Operator has attached a venting and flaring plan that evaluates and selects one or more of the potential alternative beneficial uses for the natural gas until a natural gas gathering system is available, including:

- (a) power generation on lease;
- (b) power generation for grid;
- (c) compression on lease;
- (d) liquids removal on lease;
- (e) reinjection for underground storage;
- (f) reinjection for temporary storage;
- (g) reinjection for enhanced oil recovery;
- (h) fuel cell production; and
- (i) other alternative beneficial uses approved by the division.

Section 4 - Notices


1. If, at any time after Operator submits this Natural Gas Management Plan and before the well is spud:

(a) Operator becomes aware that the natural gas gathering system it planned to connect the well(s) to has become unavailable or will not have capacity to transport one hundred percent of the production from the well(s), no later than 20 days after becoming aware of such information, Operator shall submit for OCD's approval a new or revised venting and flaring plan containing the information specified in Paragraph (5) of Subsection D of 19.15.27.9 NMAC; or

(b) Operator becomes aware that it has, cumulatively for the year, become out of compliance with its baseline natural gas capture rate or natural gas capture requirement, no later than 20 days after becoming aware of such information, Operator shall submit for OCD's approval a new or revised Natural Gas Management Plan for each well it plans to spud during the next 90 days containing the information specified in Paragraph (2) of Subsection D of 19.15.27.9 NMAC, and shall file an update for each Natural Gas Management Plan until Operator is back in compliance with its baseline natural gas capture rate or natural gas capture requirement.

2. OCD may deny or conditionally approve an APD if Operator does not make a certification, fails to submit an adequate venting and flaring plan which includes alternative beneficial uses for the anticipated volume of natural gas produced, or if OCD determines that Operator will not have adequate natural gas takeaway capacity at the time a well will be spud.

I certify that, after reasonable inquiry, the statements in and attached to this Natural Gas Management Plan are true and correct to the best of my knowledge and acknowledge that a false statement may be subject to civil and criminal penalties under the Oil and Gas Act.

| |
|--|
| Signature:  |
| Printed Name: Jeff Trlica |
| Title: Regulatory Specialist |
| E-mail Address: jtrlica@taprk.com |
| Date: 12/1/2023 |
| Phone: 720-772-5910 |
| OIL CONSERVATION DIVISION (Only applicable when submitted as a standalone form) |
| Approved By: |
| Title: |
| Approval Date: |
| Conditions of Approval: |

VI. Separation Equipment: Attach a complete description of how Operator will size separation equipment to optimize gas capture:

Each surface facility design includes the following process equipment: 3-phase separators (1 separator per well), a sales gas scrubber, one or two 3-phase heater treaters, a vapor recovery tower (VRT), a VRU compressor, multiple water and oil tanks, as well as flare knockouts (HP & LP), and flares (HP & LP). All process vessels will be sized to separate oil, water, gas based upon typical/historical & predicted well performance. Each process vessel will be fitted with an appropriately sized PSV as per ASME code requirements to mitigate vessel rupture and loss of containment. Additionally, the process vessels will be fitted with pressure transmitters tied to the facility control system which will allow operations to monitor pressures and when necessary, shut-in the facility to avoid vessel over-pressure and the potential vent of natural gas. Natural gas will preferentially be sold to pipeline, and only during upset/emergency conditions will gas be directed to the HP flare system. Flash gas from both the 3-phase heater treater and the VRT will be recompressed using a VRU compressor and this gas will also preferentially be directed to the gas sales pipeline. Oil tanks & water tanks will be fitted with 16 oz thief hatches as well as PVRVs to protect the tanks from rupture/collapse. Additionally, the tank vapor outlets and tank vapor capture system will be sized to keep tank pressures below 12 oz. The tank vapor capture system will include a tank vapor blower & knockout as well as a low-pressure flare and knockout. Tank vapors will preferentially be directed to the VRU and the sales gas pipeline. Only during process upsets/emergency conditions will tank vapors be directed to the LP flare system.

VII. Operational Practices: Attach a complete description of the actions Operator will take to comply with the requirements of Subsection A through F of 19.15.27.8 NMAC. ← See attached reg for requirements.

- During drilling operations- Gas meters will be installed at the shakers and Volume Totalizers will be installed on the pits. In the event that elevated gas levels, or a pit gain are observed, returns will be diverted to a gas buster. Gas coming off the gas buster will be combusted at the flare stack. A 10' or taller flare will be located at least 100' from the SHL.
- During completions operations, including stimulation and frac plug drill out operations, hydrocarbon production to surface is minimized. When gas production does occur, gas will be combusted at a flare stack. A 10' or taller flare will be located at least 100' from the SHL.
- During production operations, all process vessels (separators, heater treaters, VRTs, Tanks) will recompress (where necessary) and route gas outlets into the natural gas gathering pipeline. Gas will preferentially be routed to natural gas gathering pipeline and the flare system will be used only during emergency, malfunction, or if the gas does not meet pipeline specifications. In the event of flaring off-specification gas, operations will pull gas samples twice a week and will also route gas back to pipeline as soon as the gas meets specification. Exceptions to this will include only those qualified exceptions per the regulation 19.15.27.8 Subsection D.

- To comply with state performance standards, separation and storage equipment will be designed to handle the maximum anticipated throughput and pressure to minimize waste and reduce the likelihood of venting gas to atmosphere. Additionally, each storage atmospheric tank (Oil & Water) will be fitted with a level transmitter to facilitate gauging of the tank without opening of the thief hatch. Any gas collected through the tank vent system is expected to be recompressed and routed to sales. However, in the event of an emergency, the tank vapor capture system will be designed to combust the gas using a flare stack fitted with a continuous or automatic ignitor. The flare stack will be properly anchored and will be located a minimum of 100 feet from the well and storage tanks. Operators will conduct weekly AVO inspections. These AVO inspection records will be stored for the required 5-year period and will be made available upon Division request.

VIII. Best Management Practices: Attach a complete description of Operator's best management practices to minimize venting during active and planned maintenance.

- When performing routine or preventive maintenance on a vessel or tank, initially all inlet valves are closed, and the vessel or tank is allowed to depressurize through the normal outlet connections to gas sales and/or liquid tanks. Once the vessel or tank is depressurized to lowest acceptable sales outlet pressure, usually around 20 psig, a temporary low-pressure flowline is connected from the vessel or tank to the Vapor Recovery Unit (VRU) for further pressure reduction. Once depressurized to less than 1-2 psig, the remaining natural gas in the vessel or tank is vented to atmosphere through a controlled pressure relief valve. Once the vessel or tank is depressurized to atmospheric pressure, the vessel or tank can be safely opened, and maintenance performed.



Drilling Operations Plan
 Schlitz Fed Com #142H
 Tap Rock Operating, LLC
 SHL 612' FSL & 1211' FWL, Sec. 16
 BHL 5' FNL & 1649' FEL, Sec. 9
 T. 25S., R. 26E Eddy County, NM

Elevation above Sea Level: 3427'

DRILLING PROGRAM

1. Estimated Tops

| Formation | TVD | MD | Lithologies | Bearing |
|---------------------|------------|-----------|--------------------|----------------|
| Quaternary Deposits | 0 | 0 | Surface | None |
| Rustler | 105 | 105 | Salt | Salt |
| Top Salt | 455 | 455 | Salt | Salt |
| Base Salt | 1,690 | 1,698 | Salt | Salt |
| DMG | 1,905 | 1,915 | Sandstone | None |
| Lamar | 1,905 | 1,915 | Sandstone | Hydrocarbons |
| Bell Canyon | 1,935 | 1,946 | Sandstone | Hydrocarbons |
| Ramsey Sand | 1,950 | 1,961 | Sandstone | Hydrocarbons |
| Cherry Canyon | 2,915 | 2,938 | Carbonate | Hydrocarbons |
| Brushy Canyon | 3,790 | 3,824 | Sandstone | Hydrocarbons |
| Bone Spring Lime | 5,440 | 5,487 | Carbonate | Hydrocarbons |
| Upper Avalon | 5,585 | 5,632 | Carbonate | Hydrocarbons |
| Middle Avalon | 5,845 | 5,892 | Carbonate | Hydrocarbons |
| 1st BS Sand | 6,330 | 6,411 | Sandstone | Hydrocarbons |
| 2nd BS Carb | 6,520 | 6,799 | Carbonate | Hydrocarbons |
| KOP | 5956 | 6003 | Sandstone | Hydrocarbons |
| TD | 6530 | 16856 | Sandstone | Hydrocarbons |

2. Notable Zones

2nd BS Carb is the formation target.

3. Pressure Control

Pressure Control Equipment (See Schematics):

At 16,856', a 5M pressure control system is required. The BOP stack consisting of 3 rams with 2 pipe rams, 1 blind ram, and 1 annular preventer will be used below surface casing to TD. See attachments for BOP and choke manifold diagrams. Also present will be an accumulator that meets the requirements of 43 CFR 3172 for the pressure rating of the BOP stack. A rotating head will also be installed as needed. BOP will be inspected and operated as recommended in 43 CFR 3172. A top drive check valve and sub equipped with a full opening valve sized to fit the drill pipe and collars will be available on the rig floor in the open position. The wellhead will be a multi-bowl speed head.



Drilling Operations Plan
 Schlitz Fed Com #142H
 Tap Rock Operating, LLC
 SHL 612' FSL & 1211' FWL, Sec. 16
 BHL 5' FNL & 1649' FEL, Sec. 9
 T. 25S., R. 26E Eddy County, NM

BOP Test procedure will be as follows:

After surface casing is set and the BOP is nipped up, the BOP pressure tests will be made with a third party tester to 250 psi low, 5000 psi high, and the annular preventer will be tested to 250 psi low, 2500 psi high.

Variance Requests:

Tap Rock requests a variance to run a multi-bowl speed head for setting the Intermediate and Production Strings. Tap Rock requests a variance to drill this well using a co-flex line between the BOP and choke manifold. Certification for proposed co-flex hose is attached. The hose is not required by the manufacturer to be anchored. In the event the specific hose is not available, one of equal or higher rating will be used. Tap Rock requests a variance to have the option of batch drilling this well with other wells on the same pad. If this well is batch drilled, after cementing a casing string, a 5M dry hole cap with bleed off valve will be installed. The rig will then walk to another well on the pad. Tap Rock Operating requests to only test BOP connection breaks after rig walks per the procedures and stipulations set forth in the "BOP Shell Test Procedure" document emailed to the BLM on 8/11/22.

4. Casing & Cement

All Casing will be new.

Casing Design:

| Section | Drilled Interval | | | Casing Size | Standard | Tapered | Casing Set Depths | | | | Casing Details | | | | | |
|--------------|------------------|------|-------|-------------|----------|---------|-------------------|-----------|---------|---------|----------------|--------|--------|----------|-------|---------|
| | Hole Size | Top | Btm | | | | Top MD | Bottom MD | Top TVD | BTM TVD | Grade | Weight | Thread | Collapse | Burst | Tension |
| Surface | 14-3/4 | 0 | 350 | 11 3/4 | API | No | 0 | 350 | 0 | 350 | J-55 | 42 | BUTT | 1.13 | 1.15 | 1.6 |
| Intermediate | 11 | 350 | 1990 | 8 5/8 | API | No | 0 | 1990 | 0 | 1955 | J-55 | 32 | BUTT | 1.13 | 1.15 | 1.6 |
| Production | 7 7/8 | 1990 | 6003 | 5 1/2 | NON API | No | 0 | 6003 | 0 | 5956 | P-110 | 20 | TXP | 1.13 | 1.15 | 1.6 |
| | 7 7/8 | 6003 | 16856 | 5 1/2 | NON API | No | 6003 | 16856 | 5956 | 6530 | P-110 | 20 | TXP | 1.13 | 1.15 | 1.6 |

Cement Volumes:

| Name | Type | Top MD | Sacks | Yield | Cu. Ft | Weight | Excess | Cement | Additives |
|--------------|------|--------|-------|-------|--------|--------|--------|--------|--|
| Surface | Tail | 0 | 226 | 1.34 | 303 | 14.8 | 100% | C | 5% NCI + LCM |
| Intermediate | Lead | 0 | 113 | 3.21 | 361 | 11.0 | 65% | C | Bentonite + 1% CaCL2 + 8% NaCl + LCM |
| | Tail | 990 | 316 | 1.33 | 420 | 14.8 | 65% | C | 5% NaCl + LCM |
| Production | Lead | 1790 | 211 | 4.13 | 871 | 10.5 | 20% | H | Fluid Loss + Dispersant + Retarder + LCM |
| | Tail | 6003 | 2023 | 1.53 | 3095 | 13.2 | 20% | H | Fluid Loss + Dispersant + Retarder + LCM |

5. Mud Program

Mud Design:

| Name | Top | Bottom | Type | Mud Weight | Visc | Fluid Loss |
|--------------|------|--------|-------------|------------|-------|------------|
| Surface | 0 | 350 | FW Spud Mud | 8.40 | 28 | NC |
| Intermediate | 350 | 1990 | Brine Water | 10.00 | 27-30 | NC |
| Production | 1990 | 16856 | Cut Brine | 9.00 | 27-30 | NC |



Drilling Operations Plan
Schlitz Fed Com #142H
Tap Rock Operating, LLC
SHL 612' FSL & 1211' FWL, Sec. 16
BHL 5' FNL & 1649' FEL, Sec. 9
T. 25S., R. 26E Eddy County, NM

Electronic Pason mud monitor system complying with 43 CFR 3172 will be used. All necessary mud products (i.e., barite, pac) for weight addition and fluid loss control will always be on site. Mud program is subject to change due to hole conditions. A closed loop system will be used.

6. Cores, Tests, & Logs

- Electric Logging Program: No open-hole logs are planned at this time for the pilot hole.
- GR will be collected while drilling through the MWD tools from KOP to TD.
- A 2-person mud logging program will be used from KOP to TD.
- No DSTs or cores are planned at this time.
- CBL w/ CCL from as far as gravity will let it fall to TOC.

7. Down Hole Conditions

No abnormal pressure or temperature is expected. Maximum expected bottom hole pressure is ≈ 3056 psi. Expected bottom hole temperature is $\approx 175^{\circ}$ F.

Tap Rock does not anticipate that there will be enough H₂S from the surface to the 1st Bone Spring Sand formations to meet the 43 CFR 3176 requirements for the submission of an "H₂S Drilling Operation Plan" or "Public Protection Plan" for drilling and completing this well. Tap Rock has an H₂S safety package on all wells and an "H₂S Drilling Operations Plan" is attached. Adequate flare lines will be installed off the mud/gas separator where gas may be safely flared. All personnel will be familiar with all aspects of safe operation of equipment being used.

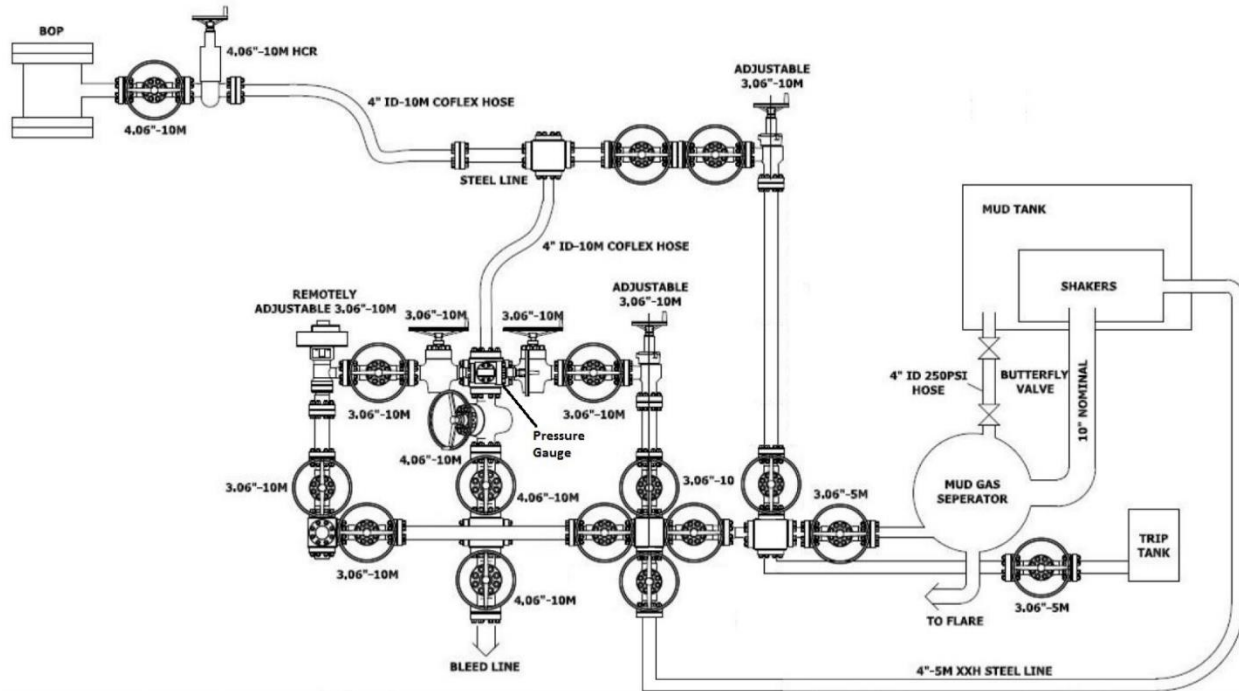
8. Other Information

Road and location construction will begin after BLM approval of APD. Anticipated spud date as soon as approved. Drilling expected to take 15 days. If production casing is run an additional 60 days will be required to complete and construct surface facilities.



Drilling Operations Plan
 Schlitz Fed Com #142H
 Tap Rock Operating, LLC
 SHL 612' FSL & 1211' FWL, Sec. 16
 BHL 5' FNL & 1649' FEL, Sec. 9
 T. 25S., R. 26E Eddy County, NM

10M Choke Layout

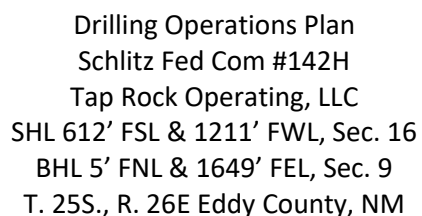




Drilling Operations Plan
Schlitz Fed Com #142H
Tap Rock Operating, LLC
SHL 612' FSL & 1211' FWL, Sec. 16
BHL 5' FNL & 1649' FEL, Sec. 9
T. 25S., R. 26E Eddy County, NM

10,000 psi BOP Stack

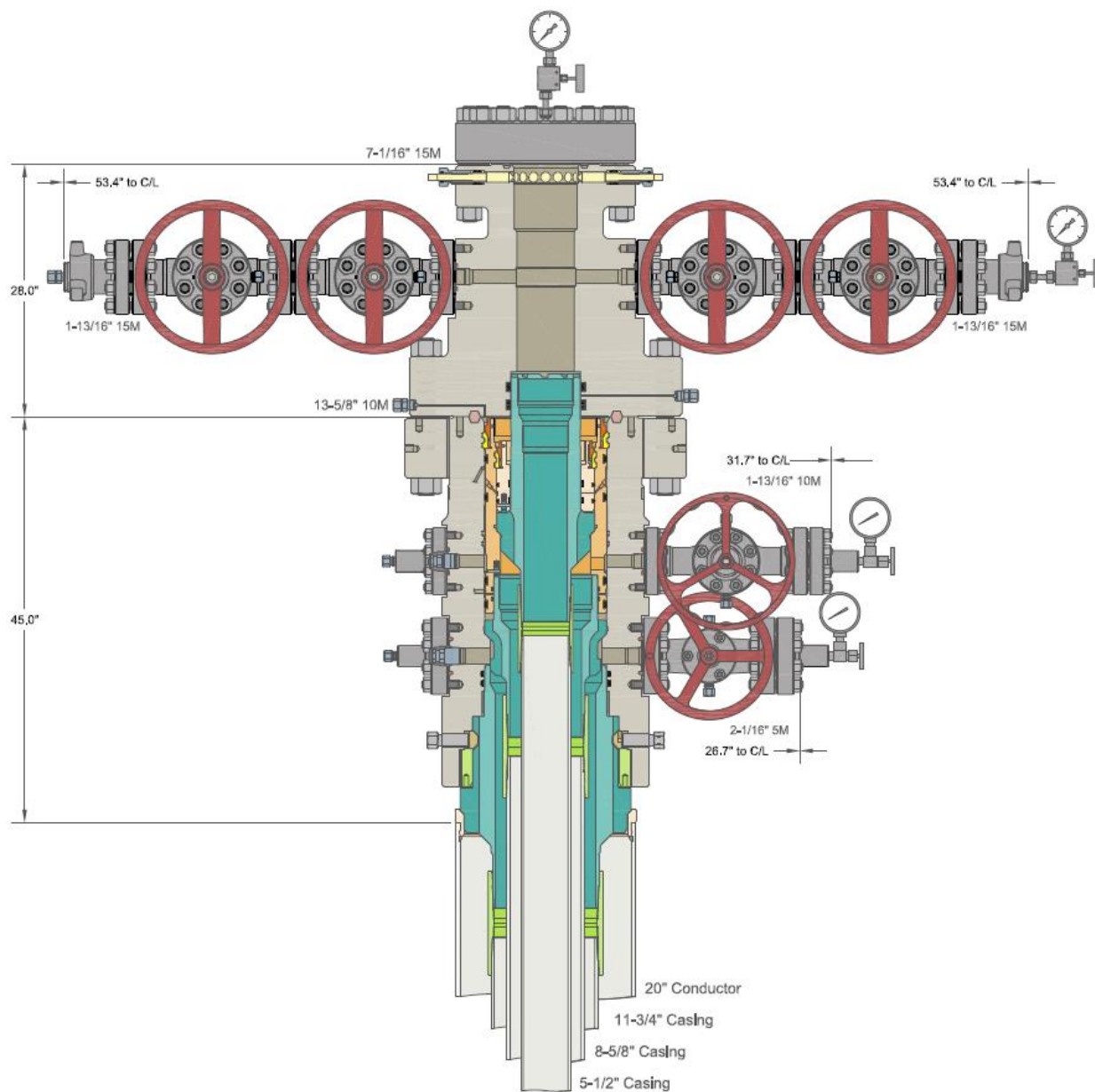






Drilling Operations Plan
Schlitz Fed Com #142H
Tap Rock Operating, LLC
SHL 612' FSL & 1211' FWL, Sec. 16
BHL 5' FNL & 1649' FEL, Sec. 9
T. 25S., R. 26E Eddy County, NM

Multi-bowl Wellhead Design





Tap Rock Resources, LLC

**Eddy County, NM (NAD 83 NME)
(Schlitz Fed Com) Sec-16_T-25-S_R-26-E
Schlitz Fed Com #142H**

OWB

Plan: Plan #1

Standard Planning Report

24 June, 2023





Intrepid Planning Report



| | | | |
|------------------|--|-------------------------------------|----------------------------|
| Database: | EDM 5000.15 Single User Db | Local Co-ordinate Reference: | Well Schlitz Fed Com #142H |
| Company: | Tap Rock Resources, LLC | TVD Reference: | KB @ 3453.0usft |
| Project: | Eddy County, NM (NAD 83 NME) | MD Reference: | KB @ 3453.0usft |
| Site: | (Schlitz Fed Com) Sec-16_T-25-S_R-26-E | North Reference: | Grid |
| Well: | Schlitz Fed Com #142H | Survey Calculation Method: | Minimum Curvature |
| Wellbore: | OWB | | |
| Design: | Plan #1 | | |

| | | | |
|--------------------|------------------------------|----------------------|----------------|
| Project | Eddy County, NM (NAD 83 NME) | | |
| Map System: | US State Plane 1983 | System Datum: | Mean Sea Level |
| Geo Datum: | North American Datum 1983 | | |
| Map Zone: | New Mexico Eastern Zone | | |

| | | | | | |
|-----------------------|----------|--|-----------------|-------------------|------------------|
| Site | | (Schlitz Fed Com) Sec-16_T-25-S_R-26-E | | | |
| Site Position: | | Northing: | 409,046.00 usft | Latitude: | 32° 7' 28.354 N |
| From: | Map | Easting: | 550,854.00 usft | Longitude: | 104° 18' 9.332 W |
| Position Uncertainty: | 0.0 usft | Slot Radius: | 13-3/16 " | Grid Convergence: | 0.02 ° |

| | | | | | | |
|----------------------|-----------------------|---------------------|-----------|-----------------|--------------|------------------|
| Well | Schlitz Fed Com #142H | | | | | |
| Well Position | +N-S | 0.0 usft | Northing: | 409,046.00 usft | Latitude: | 32° 7' 28.354 N |
| | +E-W | 50.0 usft | Easting: | 550,904.00 usft | Longitude: | 104° 18' 8.750 W |
| Position Uncertainty | 0.0 usft | Wellhead Elevation: | | Ground Level: | 3,427.0 usft | |

| | | | | | |
|------------------|-------------------|--------------------|------------------------|----------------------|----------------------------|
| Wellbore | OWB | | | | |
| Magnetics | Model Name | Sample Date | Declination (°) | Dip Angle (°) | Field Strength (nT) |
| | IGRF2015 | 06/21/23 | 6.63 | 59.78 | 47,187.39207232 |

| | | | | |
|--------------------------|--------------------------------|--------------------|----------------------|----------------------|
| Design | Plan #1 | | | |
| Audit Notes: | | | | |
| Version: | Phase: | PLAN | Tie On Depth: | 0.0 |
| Vertical Section: | Depth From (TVD) (usft) | +N-S (usft) | +E-W (usft) | Direction (°) |
| | 0.0 | 0.0 | 0.0 | 359.64 |

| | | | | |
|---------------------------------|------------------------|--------------------------|---------------------|----------------|
| Plan Survey Tool Program | Date | 06/24/23 | | |
| Depth From (usft) | Depth To (usft) | Survey (Wellbore) | Tool Name | Remarks |
| 1 | 0.0 | 16,855.6 Plan #1 (OWB) | MWD | |
| | | | OWSG MWD - Standard | |



Intrepid Planning Report



| | | | |
|------------------|--|-------------------------------------|----------------------------|
| Database: | EDM 5000.15 Single User Db | Local Co-ordinate Reference: | Well Schlitz Fed Com #142H |
| Company: | Tap Rock Resources, LLC | TVD Reference: | KB @ 3453.0usft |
| Project: | Eddy County, NM (NAD 83 NME) | MD Reference: | KB @ 3453.0usft |
| Site: | (Schlitz Fed Com) Sec-16_T-25-S_R-26-E | North Reference: | Grid |
| Well: | Schlitz Fed Com #142H | Survey Calculation Method: | Minimum Curvature |
| Wellbore: | OWB | | |
| Design: | Plan #1 | | |

| Plan Sections | | | | | | | | | | |
|-----------------------------|--------------------|----------------|-----------------------------|-----------------|-----------------|-------------------------------|------------------------------|-----------------------------|------------|---------------------|
| Measured Depth (usft) | Inclination (°) | Azimuth (°) | Vertical Depth (usft) | +N/-S (usft) | +E/-W (usft) | Dogleg Rate (°/100usft) | Build Rate (°/100usft) | Turn Rate (°/100usft) | TFO (°) | Target |
| 0.0 | 0.00 | 0.00 | 0.0 | 0.0 | 0.0 | 0.00 | 0.00 | 0.00 | 0.00 | |
| 500.0 | 0.00 | 0.00 | 500.0 | 0.0 | 0.0 | 0.00 | 0.00 | 0.00 | 0.00 | |
| 1,413.2 | 9.13 | 148.47 | 1,409.4 | -61.9 | 38.0 | 1.00 | 1.00 | 0.00 | 148.47 | |
| 4,534.0 | 9.13 | 148.47 | 4,490.6 | -484.1 | 297.0 | 0.00 | 0.00 | 0.00 | 0.00 | |
| 5,447.3 | 0.00 | 0.01 | 5,400.0 | -546.0 | 335.0 | 1.00 | -1.00 | 0.00 | 180.00 | |
| 6,002.8 | 0.00 | 0.01 | 5,955.5 | -546.0 | 335.0 | 0.00 | 0.00 | 0.00 | 0.01 | |
| 6,452.8 | 45.00 | 11.00 | 6,360.6 | -381.3 | 367.0 | 10.00 | 10.00 | 0.00 | 11.00 | |
| 6,906.5 | 90.00 | 4.50 | 6,530.0 | 23.7 | 418.1 | 10.00 | 9.92 | -1.43 | -9.15 | |
| 7,111.5 | 90.00 | 4.50 | 6,530.0 | 228.1 | 434.2 | 0.00 | 0.00 | 0.00 | 0.00 | |
| 7,354.2 | 90.00 | 359.64 | 6,530.0 | 470.6 | 443.0 | 2.00 | 0.00 | -2.00 | -90.00 | |
| 16,855.8 | 90.00 | 359.64 | 6,530.0 | 9,972.0 | 384.0 | 0.00 | 0.00 | 0.00 | 0.00 | PBHL (Schlitz Fed C |



Intrepid Planning Report



Database: EDM 5000.15 Single User Db
Company: Tap Rock Resources, LLC
Project: Eddy County, NM (NAD 83 NME)
Site: (Schlitz Fed Com) Sec-16_T-25-S_R-26-E
Well: Schlitz Fed Com #142H
Wellbore: OWB
Design: Plan #1

Local Co-ordinate Reference: Well Schlitz Fed Com #142H
TVD Reference: KB @ 3453.0usft
MD Reference: KB @ 3453.0usft
North Reference: Grid
Survey Calculation Method: Minimum Curvature

| Planned Survey | | | | | | | | | |
|-----------------------------------|-----------------|-------------|-----------------------|--------------|--------------|-------------------------|-------------------------|------------------------|-----------------------|
| Measured Depth (usft) | Inclination (°) | Azimuth (°) | Vertical Depth (usft) | +N/-S (usft) | +E/-W (usft) | Vertical Section (usft) | Dogleg Rate (°/100usft) | Build Rate (°/100usft) | Turn Rate (°/100usft) |
| 0.0 | 0.00 | 0.00 | 0.0 | 0.0 | 0.0 | 0.0 | 0.00 | 0.00 | 0.00 |
| 100.0 | 0.00 | 0.00 | 100.0 | 0.0 | 0.0 | 0.0 | 0.00 | 0.00 | 0.00 |
| 200.0 | 0.00 | 0.00 | 200.0 | 0.0 | 0.0 | 0.0 | 0.00 | 0.00 | 0.00 |
| 300.0 | 0.00 | 0.00 | 300.0 | 0.0 | 0.0 | 0.0 | 0.00 | 0.00 | 0.00 |
| 400.0 | 0.00 | 0.00 | 400.0 | 0.0 | 0.0 | 0.0 | 0.00 | 0.00 | 0.00 |
| 500.0 | 0.00 | 0.00 | 500.0 | 0.0 | 0.0 | 0.0 | 0.00 | 0.00 | 0.00 |
| NUDGE - Build 1.00 | | | | | | | | | |
| 600.0 | 1.00 | 148.47 | 600.0 | -0.7 | 0.5 | -0.7 | 1.00 | 1.00 | 0.00 |
| 700.0 | 2.00 | 148.47 | 700.0 | -3.0 | 1.8 | -3.0 | 1.00 | 1.00 | 0.00 |
| 800.0 | 3.00 | 148.47 | 799.9 | -6.7 | 4.1 | -6.7 | 1.00 | 1.00 | 0.00 |
| 900.0 | 4.00 | 148.47 | 899.7 | -11.9 | 7.3 | -11.9 | 1.00 | 1.00 | 0.00 |
| 1,000.0 | 5.00 | 148.47 | 999.4 | -18.6 | 11.4 | -18.7 | 1.00 | 1.00 | 0.00 |
| 1,100.0 | 6.00 | 148.47 | 1,098.9 | -26.8 | 16.4 | -26.9 | 1.00 | 1.00 | 0.00 |
| 1,200.0 | 7.00 | 148.47 | 1,198.3 | -36.4 | 22.3 | -36.5 | 1.00 | 1.00 | 0.00 |
| 1,300.0 | 8.00 | 148.47 | 1,297.4 | -47.5 | 29.2 | -47.7 | 1.00 | 1.00 | 0.00 |
| 1,400.0 | 9.00 | 148.47 | 1,396.3 | -60.1 | 36.9 | -60.4 | 1.00 | 1.00 | 0.00 |
| 1,413.2 | 9.13 | 148.47 | 1,409.4 | -61.9 | 38.0 | -62.1 | 1.00 | 1.00 | 0.00 |
| HOLD - 3120.8 at 1413.2 MD | | | | | | | | | |
| 1,500.0 | 9.13 | 148.47 | 1,495.0 | -73.6 | 45.2 | -73.9 | 0.00 | 0.00 | 0.00 |
| 1,600.0 | 9.13 | 148.47 | 1,593.8 | -87.2 | 53.5 | -87.5 | 0.00 | 0.00 | 0.00 |
| 1,700.0 | 9.13 | 148.47 | 1,692.5 | -100.7 | 61.8 | -101.1 | 0.00 | 0.00 | 0.00 |
| 1,800.0 | 9.13 | 148.47 | 1,791.2 | -114.2 | 70.1 | -114.7 | 0.00 | 0.00 | 0.00 |
| 1,900.0 | 9.13 | 148.47 | 1,890.0 | -127.8 | 78.4 | -128.2 | 0.00 | 0.00 | 0.00 |
| 2,000.0 | 9.13 | 148.47 | 1,988.7 | -141.3 | 86.7 | -141.8 | 0.00 | 0.00 | 0.00 |
| 2,100.0 | 9.13 | 148.47 | 2,087.4 | -154.8 | 95.0 | -155.4 | 0.00 | 0.00 | 0.00 |
| 2,200.0 | 9.13 | 148.47 | 2,186.2 | -168.3 | 103.3 | -169.0 | 0.00 | 0.00 | 0.00 |
| 2,300.0 | 9.13 | 148.47 | 2,284.9 | -181.9 | 111.6 | -182.6 | 0.00 | 0.00 | 0.00 |
| 2,400.0 | 9.13 | 148.47 | 2,383.6 | -195.4 | 119.9 | -196.1 | 0.00 | 0.00 | 0.00 |
| 2,500.0 | 9.13 | 148.47 | 2,482.4 | -208.9 | 128.2 | -209.7 | 0.00 | 0.00 | 0.00 |
| 2,600.0 | 9.13 | 148.47 | 2,581.1 | -222.5 | 136.5 | -223.3 | 0.00 | 0.00 | 0.00 |
| 2,700.0 | 9.13 | 148.47 | 2,679.8 | -236.0 | 144.8 | -236.9 | 0.00 | 0.00 | 0.00 |
| 2,800.0 | 9.13 | 148.47 | 2,778.6 | -249.5 | 153.1 | -250.5 | 0.00 | 0.00 | 0.00 |
| 2,900.0 | 9.13 | 148.47 | 2,877.3 | -263.0 | 161.4 | -264.0 | 0.00 | 0.00 | 0.00 |
| 3,000.0 | 9.13 | 148.47 | 2,976.0 | -276.6 | 169.7 | -277.6 | 0.00 | 0.00 | 0.00 |
| 3,100.0 | 9.13 | 148.47 | 3,074.8 | -290.1 | 178.0 | -291.2 | 0.00 | 0.00 | 0.00 |
| 3,200.0 | 9.13 | 148.47 | 3,173.5 | -303.6 | 186.3 | -304.8 | 0.00 | 0.00 | 0.00 |
| 3,300.0 | 9.13 | 148.47 | 3,272.2 | -317.2 | 194.6 | -318.4 | 0.00 | 0.00 | 0.00 |
| 3,400.0 | 9.13 | 148.47 | 3,371.0 | -330.7 | 202.9 | -331.9 | 0.00 | 0.00 | 0.00 |
| 3,500.0 | 9.13 | 148.47 | 3,469.7 | -344.2 | 211.2 | -345.5 | 0.00 | 0.00 | 0.00 |
| 3,600.0 | 9.13 | 148.47 | 3,568.4 | -357.7 | 219.5 | -359.1 | 0.00 | 0.00 | 0.00 |
| 3,700.0 | 9.13 | 148.47 | 3,667.2 | -371.3 | 227.8 | -372.7 | 0.00 | 0.00 | 0.00 |
| 3,800.0 | 9.13 | 148.47 | 3,765.9 | -384.8 | 236.1 | -386.3 | 0.00 | 0.00 | 0.00 |
| 3,900.0 | 9.13 | 148.47 | 3,864.6 | -398.3 | 244.4 | -399.8 | 0.00 | 0.00 | 0.00 |
| 4,000.0 | 9.13 | 148.47 | 3,963.3 | -411.8 | 252.7 | -413.4 | 0.00 | 0.00 | 0.00 |
| 4,100.0 | 9.13 | 148.47 | 4,062.1 | -425.4 | 261.0 | -427.0 | 0.00 | 0.00 | 0.00 |
| 4,200.0 | 9.13 | 148.47 | 4,160.8 | -438.9 | 269.3 | -440.6 | 0.00 | 0.00 | 0.00 |
| 4,300.0 | 9.13 | 148.47 | 4,259.5 | -452.4 | 277.6 | -454.2 | 0.00 | 0.00 | 0.00 |
| 4,400.0 | 9.13 | 148.47 | 4,358.3 | -466.0 | 285.9 | -467.7 | 0.00 | 0.00 | 0.00 |
| 4,500.0 | 9.13 | 148.47 | 4,457.0 | -479.5 | 294.2 | -481.3 | 0.00 | 0.00 | 0.00 |
| 4,534.0 | 9.13 | 148.47 | 4,490.6 | -484.1 | 297.0 | -486.0 | 0.00 | 0.00 | 0.00 |
| DROP - -1.00 | | | | | | | | | |
| 4,600.0 | 8.47 | 148.47 | 4,555.8 | -492.7 | 302.3 | -494.6 | 1.00 | -1.00 | 0.00 |
| 4,700.0 | 7.47 | 148.47 | 4,654.8 | -504.5 | 309.6 | -506.5 | 1.00 | -1.00 | 0.00 |



Intrepid Planning Report



Database: EDM 5000.15 Single User Db
Company: Tap Rock Resources, LLC
Project: Eddy County, NM (NAD 83 NME)
Site: (Schlitz Fed Com) Sec-16_T-25-S_R-26-E
Well: Schlitz Fed Com #142H
Wellbore: OWB
Design: Plan #1

Local Co-ordinate Reference: Well Schlitz Fed Com #142H
TVD Reference: KB @ 3453.0usft
MD Reference: KB @ 3453.0usft
North Reference: Grid
Survey Calculation Method: Minimum Curvature

| Planned Survey | | | | | | | | | |
|---------------------------------------|-----------------|-------------|-----------------------|--------------|--------------|-------------------------|-------------------------|------------------------|-----------------------|
| Measured Depth (usft) | Inclination (°) | Azimuth (°) | Vertical Depth (usft) | +N/-S (usft) | +E/-W (usft) | Vertical Section (usft) | Dogleg Rate (°/100usft) | Build Rate (°/100usft) | Turn Rate (°/100usft) |
| 4,800.0 | 6.47 | 148.47 | 4,754.1 | -514.9 | 315.9 | -516.8 | 1.00 | -1.00 | 0.00 |
| 4,900.0 | 5.47 | 148.47 | 4,853.5 | -523.7 | 321.3 | -525.7 | 1.00 | -1.00 | 0.00 |
| 5,000.0 | 4.47 | 148.47 | 4,953.2 | -531.1 | 325.9 | -533.2 | 1.00 | -1.00 | 0.00 |
| 5,100.0 | 3.47 | 148.47 | 5,052.9 | -537.0 | 329.5 | -539.1 | 1.00 | -1.00 | 0.00 |
| 5,200.0 | 2.47 | 148.47 | 5,152.8 | -541.5 | 332.2 | -543.5 | 1.00 | -1.00 | 0.00 |
| 5,300.0 | 1.47 | 148.47 | 5,252.7 | -544.4 | 334.0 | -546.5 | 1.00 | -1.00 | 0.00 |
| 5,400.0 | 0.47 | 148.47 | 5,352.7 | -545.8 | 334.9 | -547.9 | 1.00 | -1.00 | 0.00 |
| 5,447.3 | 0.00 | 0.01 | 5,400.0 | -546.0 | 335.0 | -548.1 | 1.00 | -1.00 | 0.00 |
| HOLD - 555.5 at 5447.3 MD | | | | | | | | | |
| 5,500.0 | 0.00 | 0.00 | 5,452.7 | -546.0 | 335.0 | -548.1 | 0.00 | 0.00 | 0.00 |
| 5,600.0 | 0.00 | 0.00 | 5,552.7 | -546.0 | 335.0 | -548.1 | 0.00 | 0.00 | 0.00 |
| 5,700.0 | 0.00 | 0.00 | 5,652.7 | -546.0 | 335.0 | -548.1 | 0.00 | 0.00 | 0.00 |
| 5,800.0 | 0.00 | 0.00 | 5,752.7 | -546.0 | 335.0 | -548.1 | 0.00 | 0.00 | 0.00 |
| 5,900.0 | 0.00 | 0.00 | 5,852.7 | -546.0 | 335.0 | -548.1 | 0.00 | 0.00 | 0.00 |
| 6,002.8 | 0.00 | 0.00 | 5,955.5 | -546.0 | 335.0 | -548.1 | 0.00 | 0.00 | 0.00 |
| KOP - Build 10.00 | | | | | | | | | |
| 6,050.0 | 4.72 | 11.00 | 6,002.7 | -544.1 | 335.4 | -546.2 | 10.00 | 10.00 | 0.00 |
| 6,100.0 | 9.72 | 11.00 | 6,052.3 | -537.9 | 336.6 | -540.0 | 10.00 | 10.00 | 0.00 |
| 6,150.0 | 14.72 | 11.00 | 6,101.1 | -527.5 | 338.6 | -529.7 | 10.00 | 10.00 | 0.00 |
| 6,200.0 | 19.72 | 11.00 | 6,148.8 | -513.0 | 341.4 | -515.1 | 10.00 | 10.00 | 0.00 |
| 6,250.0 | 24.72 | 11.00 | 6,195.1 | -494.5 | 345.0 | -496.6 | 10.00 | 10.00 | 0.00 |
| 6,300.0 | 29.72 | 11.00 | 6,239.6 | -472.0 | 349.4 | -474.2 | 10.00 | 10.00 | 0.00 |
| 6,350.0 | 34.72 | 11.00 | 6,281.9 | -445.8 | 354.5 | -448.1 | 10.00 | 10.00 | 0.00 |
| 6,400.0 | 39.72 | 11.00 | 6,321.7 | -416.2 | 360.2 | -418.4 | 10.00 | 10.00 | 0.00 |
| 6,452.8 | 45.00 | 11.00 | 6,360.6 | -381.3 | 367.0 | -383.6 | 10.00 | 10.00 | 0.00 |
| BLD/TRN - DLS 10.00 TFO -9.15 | | | | | | | | | |
| 6,500.0 | 49.67 | 10.02 | 6,392.6 | -347.1 | 373.3 | -349.5 | 10.00 | 9.88 | -2.08 |
| 6,550.0 | 54.61 | 9.11 | 6,423.3 | -308.2 | 379.9 | -310.6 | 10.00 | 9.90 | -1.81 |
| 6,600.0 | 59.57 | 8.31 | 6,450.5 | -266.7 | 386.2 | -269.2 | 10.00 | 9.91 | -1.60 |
| 6,650.0 | 64.53 | 7.59 | 6,473.9 | -223.0 | 392.3 | -225.5 | 10.00 | 9.92 | -1.44 |
| 6,700.0 | 69.49 | 6.93 | 6,493.4 | -177.4 | 398.1 | -179.9 | 10.00 | 9.92 | -1.33 |
| 6,750.0 | 74.46 | 6.30 | 6,508.9 | -130.2 | 403.6 | -132.7 | 10.00 | 9.93 | -1.24 |
| 6,800.0 | 79.42 | 5.71 | 6,520.2 | -81.7 | 408.7 | -84.3 | 10.00 | 9.93 | -1.19 |
| 6,850.0 | 84.39 | 5.14 | 6,527.2 | -32.5 | 413.4 | -35.1 | 10.00 | 9.94 | -1.15 |
| 6,900.0 | 89.36 | 4.57 | 6,529.9 | 17.3 | 417.6 | 14.6 | 10.00 | 9.94 | -1.13 |
| 6,906.5 | 90.00 | 4.50 | 6,530.0 | 23.7 | 418.1 | 21.1 | 10.00 | 9.94 | -1.12 |
| EOC - 205.0 hold at 6906.5 MD | | | | | | | | | |
| 7,000.0 | 90.00 | 4.50 | 6,530.0 | 117.0 | 425.5 | 114.3 | 0.00 | 0.00 | 0.00 |
| 7,100.0 | 90.00 | 4.50 | 6,530.0 | 216.7 | 433.3 | 213.9 | 0.00 | 0.00 | 0.00 |
| 7,111.5 | 90.00 | 4.50 | 6,530.0 | 228.1 | 434.2 | 225.3 | 0.00 | 0.00 | 0.00 |
| Start DLS 2.00 TFO -90.00 | | | | | | | | | |
| 7,200.0 | 90.00 | 2.73 | 6,530.0 | 316.4 | 439.8 | 313.7 | 2.00 | 0.00 | -2.00 |
| 7,300.0 | 90.00 | 0.73 | 6,530.0 | 416.4 | 442.8 | 413.6 | 2.00 | 0.00 | -2.00 |
| 7,354.2 | 90.00 | 359.64 | 6,530.0 | 470.6 | 443.0 | 467.8 | 2.00 | 0.00 | -2.00 |
| Start 9501.6 hold at 7354.2 MD | | | | | | | | | |
| 7,400.0 | 90.00 | 359.64 | 6,530.0 | 516.4 | 442.7 | 513.6 | 0.00 | 0.00 | 0.00 |
| 7,500.0 | 90.00 | 359.64 | 6,530.0 | 616.4 | 442.1 | 613.6 | 0.00 | 0.00 | 0.00 |
| 7,600.0 | 90.00 | 359.64 | 6,530.0 | 716.4 | 441.5 | 713.6 | 0.00 | 0.00 | 0.00 |
| 7,700.0 | 90.00 | 359.64 | 6,530.0 | 816.4 | 440.8 | 813.6 | 0.00 | 0.00 | 0.00 |
| 7,800.0 | 90.00 | 359.64 | 6,530.0 | 916.4 | 440.2 | 913.6 | 0.00 | 0.00 | 0.00 |
| 7,900.0 | 90.00 | 359.64 | 6,530.0 | 1,016.4 | 439.6 | 1,013.6 | 0.00 | 0.00 | 0.00 |
| 8,000.0 | 90.00 | 359.64 | 6,530.0 | 1,116.4 | 439.0 | 1,113.6 | 0.00 | 0.00 | 0.00 |
| 8,100.0 | 90.00 | 359.64 | 6,530.0 | 1,216.4 | 438.4 | 1,213.6 | 0.00 | 0.00 | 0.00 |



Intrepid Planning Report



Database: EDM 5000.15 Single User Db
Company: Tap Rock Resources, LLC
Project: Eddy County, NM (NAD 83 NME)
Site: (Schlitz Fed Com) Sec-16_T-25-S_R-26-E
Well: Schlitz Fed Com #142H
Wellbore: OWB
Design: Plan #1

Local Co-ordinate Reference: Well Schlitz Fed Com #142H
TVD Reference: KB @ 3453.0usft
MD Reference: KB @ 3453.0usft
North Reference: Grid
Survey Calculation Method: Minimum Curvature

| Planned Survey | | | | | | | | | |
|-----------------------|-----------------|-------------|-----------------------|--------------|--------------|-------------------------|-------------------------|------------------------|-----------------------|
| Measured Depth (usft) | Inclination (°) | Azimuth (°) | Vertical Depth (usft) | +N/-S (usft) | +E/-W (usft) | Vertical Section (usft) | Dogleg Rate (°/100usft) | Build Rate (°/100usft) | Turn Rate (°/100usft) |
| 8,200.0 | 90.00 | 359.64 | 6,530.0 | 1,316.4 | 437.7 | 1,313.6 | 0.00 | 0.00 | 0.00 |
| 8,300.0 | 90.00 | 359.64 | 6,530.0 | 1,416.4 | 437.1 | 1,413.6 | 0.00 | 0.00 | 0.00 |
| 8,400.0 | 90.00 | 359.64 | 6,530.0 | 1,516.4 | 436.5 | 1,513.6 | 0.00 | 0.00 | 0.00 |
| 8,500.0 | 90.00 | 359.64 | 6,530.0 | 1,616.4 | 435.9 | 1,613.6 | 0.00 | 0.00 | 0.00 |
| 8,600.0 | 90.00 | 359.64 | 6,530.0 | 1,716.4 | 435.2 | 1,713.6 | 0.00 | 0.00 | 0.00 |
| 8,700.0 | 90.00 | 359.64 | 6,530.0 | 1,816.4 | 434.6 | 1,813.6 | 0.00 | 0.00 | 0.00 |
| 8,800.0 | 90.00 | 359.64 | 6,530.0 | 1,916.4 | 434.0 | 1,913.6 | 0.00 | 0.00 | 0.00 |
| 8,900.0 | 90.00 | 359.64 | 6,530.0 | 2,016.4 | 433.4 | 2,013.6 | 0.00 | 0.00 | 0.00 |
| 9,000.0 | 90.00 | 359.64 | 6,530.0 | 2,116.4 | 432.8 | 2,113.6 | 0.00 | 0.00 | 0.00 |
| 9,100.0 | 90.00 | 359.64 | 6,530.0 | 2,216.4 | 432.1 | 2,213.6 | 0.00 | 0.00 | 0.00 |
| 9,200.0 | 90.00 | 359.64 | 6,530.0 | 2,316.3 | 431.5 | 2,313.6 | 0.00 | 0.00 | 0.00 |
| 9,300.0 | 90.00 | 359.64 | 6,530.0 | 2,416.3 | 430.9 | 2,413.6 | 0.00 | 0.00 | 0.00 |
| 9,400.0 | 90.00 | 359.64 | 6,530.0 | 2,516.3 | 430.3 | 2,513.6 | 0.00 | 0.00 | 0.00 |
| 9,500.0 | 90.00 | 359.64 | 6,530.0 | 2,616.3 | 429.7 | 2,613.6 | 0.00 | 0.00 | 0.00 |
| 9,600.0 | 90.00 | 359.64 | 6,530.0 | 2,716.3 | 429.0 | 2,713.6 | 0.00 | 0.00 | 0.00 |
| 9,700.0 | 90.00 | 359.64 | 6,530.0 | 2,816.3 | 428.4 | 2,813.6 | 0.00 | 0.00 | 0.00 |
| 9,800.0 | 90.00 | 359.64 | 6,530.0 | 2,916.3 | 427.8 | 2,913.6 | 0.00 | 0.00 | 0.00 |
| 9,900.0 | 90.00 | 359.64 | 6,530.0 | 3,016.3 | 427.2 | 3,013.6 | 0.00 | 0.00 | 0.00 |
| 10,000.0 | 90.00 | 359.64 | 6,530.0 | 3,116.3 | 426.6 | 3,113.6 | 0.00 | 0.00 | 0.00 |
| 10,100.0 | 90.00 | 359.64 | 6,530.0 | 3,216.3 | 425.9 | 3,213.6 | 0.00 | 0.00 | 0.00 |
| 10,200.0 | 90.00 | 359.64 | 6,530.0 | 3,316.3 | 425.3 | 3,313.6 | 0.00 | 0.00 | 0.00 |
| 10,300.0 | 90.00 | 359.64 | 6,530.0 | 3,416.3 | 424.7 | 3,413.6 | 0.00 | 0.00 | 0.00 |
| 10,400.0 | 90.00 | 359.64 | 6,530.0 | 3,516.3 | 424.1 | 3,513.6 | 0.00 | 0.00 | 0.00 |
| 10,500.0 | 90.00 | 359.64 | 6,530.0 | 3,616.3 | 423.5 | 3,613.6 | 0.00 | 0.00 | 0.00 |
| 10,600.0 | 90.00 | 359.64 | 6,530.0 | 3,716.3 | 422.8 | 3,713.6 | 0.00 | 0.00 | 0.00 |
| 10,700.0 | 90.00 | 359.64 | 6,530.0 | 3,816.3 | 422.2 | 3,813.6 | 0.00 | 0.00 | 0.00 |
| 10,800.0 | 90.00 | 359.64 | 6,530.0 | 3,916.3 | 421.6 | 3,913.6 | 0.00 | 0.00 | 0.00 |
| 10,900.0 | 90.00 | 359.64 | 6,530.0 | 4,016.3 | 421.0 | 4,013.6 | 0.00 | 0.00 | 0.00 |
| 11,000.0 | 90.00 | 359.64 | 6,530.0 | 4,116.3 | 420.4 | 4,113.6 | 0.00 | 0.00 | 0.00 |
| 11,100.0 | 90.00 | 359.64 | 6,530.0 | 4,216.3 | 419.7 | 4,213.6 | 0.00 | 0.00 | 0.00 |
| 11,200.0 | 90.00 | 359.64 | 6,530.0 | 4,316.3 | 419.1 | 4,313.6 | 0.00 | 0.00 | 0.00 |
| 11,300.0 | 90.00 | 359.64 | 6,530.0 | 4,416.3 | 418.5 | 4,413.6 | 0.00 | 0.00 | 0.00 |
| 11,400.0 | 90.00 | 359.64 | 6,530.0 | 4,516.3 | 417.9 | 4,513.6 | 0.00 | 0.00 | 0.00 |
| 11,500.0 | 90.00 | 359.64 | 6,530.0 | 4,616.3 | 417.2 | 4,613.6 | 0.00 | 0.00 | 0.00 |
| 11,600.0 | 90.00 | 359.64 | 6,530.0 | 4,716.3 | 416.6 | 4,713.6 | 0.00 | 0.00 | 0.00 |
| 11,700.0 | 90.00 | 359.64 | 6,530.0 | 4,816.3 | 416.0 | 4,813.6 | 0.00 | 0.00 | 0.00 |
| 11,800.0 | 90.00 | 359.64 | 6,530.0 | 4,916.3 | 415.4 | 4,913.6 | 0.00 | 0.00 | 0.00 |
| 11,900.0 | 90.00 | 359.64 | 6,530.0 | 5,016.3 | 414.8 | 5,013.6 | 0.00 | 0.00 | 0.00 |
| 12,000.0 | 90.00 | 359.64 | 6,530.0 | 5,116.3 | 414.1 | 5,113.6 | 0.00 | 0.00 | 0.00 |
| 12,100.0 | 90.00 | 359.64 | 6,530.0 | 5,216.3 | 413.5 | 5,213.6 | 0.00 | 0.00 | 0.00 |
| 12,200.0 | 90.00 | 359.64 | 6,530.0 | 5,316.3 | 412.9 | 5,313.6 | 0.00 | 0.00 | 0.00 |
| 12,300.0 | 90.00 | 359.64 | 6,530.0 | 5,416.3 | 412.3 | 5,413.6 | 0.00 | 0.00 | 0.00 |
| 12,400.0 | 90.00 | 359.64 | 6,530.0 | 5,516.3 | 411.7 | 5,513.6 | 0.00 | 0.00 | 0.00 |
| 12,500.0 | 90.00 | 359.64 | 6,530.0 | 5,616.3 | 411.0 | 5,613.6 | 0.00 | 0.00 | 0.00 |
| 12,600.0 | 90.00 | 359.64 | 6,530.0 | 5,716.3 | 410.4 | 5,713.6 | 0.00 | 0.00 | 0.00 |
| 12,700.0 | 90.00 | 359.64 | 6,530.0 | 5,816.3 | 409.8 | 5,813.6 | 0.00 | 0.00 | 0.00 |
| 12,800.0 | 90.00 | 359.64 | 6,530.0 | 5,916.3 | 409.2 | 5,913.6 | 0.00 | 0.00 | 0.00 |
| 12,900.0 | 90.00 | 359.64 | 6,530.0 | 6,016.3 | 408.6 | 6,013.6 | 0.00 | 0.00 | 0.00 |
| 13,000.0 | 90.00 | 359.64 | 6,530.0 | 6,116.3 | 407.9 | 6,113.6 | 0.00 | 0.00 | 0.00 |
| 13,100.0 | 90.00 | 359.64 | 6,530.0 | 6,216.3 | 407.3 | 6,213.6 | 0.00 | 0.00 | 0.00 |
| 13,200.0 | 90.00 | 359.64 | 6,530.0 | 6,316.3 | 406.7 | 6,313.6 | 0.00 | 0.00 | 0.00 |
| 13,300.0 | 90.00 | 359.64 | 6,530.0 | 6,416.3 | 406.1 | 6,413.6 | 0.00 | 0.00 | 0.00 |
| 13,400.0 | 90.00 | 359.64 | 6,530.0 | 6,516.3 | 405.5 | 6,513.6 | 0.00 | 0.00 | 0.00 |
| 13,500.0 | 90.00 | 359.64 | 6,530.0 | 6,616.3 | 404.8 | 6,613.6 | 0.00 | 0.00 | 0.00 |



Intrepid Planning Report



Database: EDM 5000.15 Single User Db
Company: Tap Rock Resources, LLC
Project: Eddy County, NM (NAD 83 NME)
Site: (Schlitz Fed Com) Sec-16_T-25-S_R-26-E
Well: Schlitz Fed Com #142H
Wellbore: OWB
Design: Plan #1

Local Co-ordinate Reference: Well Schlitz Fed Com #142H
TVD Reference: KB @ 3453.0usft
MD Reference: KB @ 3453.0usft
North Reference: Grid
Survey Calculation Method: Minimum Curvature

| Planned Survey | | | | | | | | | |
|-----------------------|-----------------|-------------|-----------------------|--------------|--------------|-------------------------|-------------------------|------------------------|-----------------------|
| Measured Depth (usft) | Inclination (°) | Azimuth (°) | Vertical Depth (usft) | +N/-S (usft) | +E/-W (usft) | Vertical Section (usft) | Dogleg Rate (°/100usft) | Build Rate (°/100usft) | Turn Rate (°/100usft) |
| 13,600.0 | 90.00 | 359.64 | 6,530.0 | 6,716.3 | 404.2 | 6,713.6 | 0.00 | 0.00 | 0.00 |
| 13,700.0 | 90.00 | 359.64 | 6,530.0 | 6,816.3 | 403.6 | 6,813.6 | 0.00 | 0.00 | 0.00 |
| 13,800.0 | 90.00 | 359.64 | 6,530.0 | 6,916.3 | 403.0 | 6,913.6 | 0.00 | 0.00 | 0.00 |
| 13,900.0 | 90.00 | 359.64 | 6,530.0 | 7,016.3 | 402.3 | 7,013.6 | 0.00 | 0.00 | 0.00 |
| 14,000.0 | 90.00 | 359.64 | 6,530.0 | 7,116.3 | 401.7 | 7,113.6 | 0.00 | 0.00 | 0.00 |
| 14,100.0 | 90.00 | 359.64 | 6,530.0 | 7,216.3 | 401.1 | 7,213.6 | 0.00 | 0.00 | 0.00 |
| 14,200.0 | 90.00 | 359.64 | 6,530.0 | 7,316.3 | 400.5 | 7,313.6 | 0.00 | 0.00 | 0.00 |
| 14,300.0 | 90.00 | 359.64 | 6,530.0 | 7,416.2 | 399.9 | 7,413.6 | 0.00 | 0.00 | 0.00 |
| 14,400.0 | 90.00 | 359.64 | 6,530.0 | 7,516.2 | 399.2 | 7,513.6 | 0.00 | 0.00 | 0.00 |
| 14,500.0 | 90.00 | 359.64 | 6,530.0 | 7,616.2 | 398.6 | 7,613.6 | 0.00 | 0.00 | 0.00 |
| 14,600.0 | 90.00 | 359.64 | 6,530.0 | 7,716.2 | 398.0 | 7,713.6 | 0.00 | 0.00 | 0.00 |
| 14,700.0 | 90.00 | 359.64 | 6,530.0 | 7,816.2 | 397.4 | 7,813.6 | 0.00 | 0.00 | 0.00 |
| 14,800.0 | 90.00 | 359.64 | 6,530.0 | 7,916.2 | 396.8 | 7,913.6 | 0.00 | 0.00 | 0.00 |
| 14,900.0 | 90.00 | 359.64 | 6,530.0 | 8,016.2 | 396.1 | 8,013.6 | 0.00 | 0.00 | 0.00 |
| 15,000.0 | 90.00 | 359.64 | 6,530.0 | 8,116.2 | 395.5 | 8,113.6 | 0.00 | 0.00 | 0.00 |
| 15,100.0 | 90.00 | 359.64 | 6,530.0 | 8,216.2 | 394.9 | 8,213.6 | 0.00 | 0.00 | 0.00 |
| 15,200.0 | 90.00 | 359.64 | 6,530.0 | 8,316.2 | 394.3 | 8,313.6 | 0.00 | 0.00 | 0.00 |
| 15,300.0 | 90.00 | 359.64 | 6,530.0 | 8,416.2 | 393.7 | 8,413.6 | 0.00 | 0.00 | 0.00 |
| 15,400.0 | 90.00 | 359.64 | 6,530.0 | 8,516.2 | 393.0 | 8,513.6 | 0.00 | 0.00 | 0.00 |
| 15,500.0 | 90.00 | 359.64 | 6,530.0 | 8,616.2 | 392.4 | 8,613.6 | 0.00 | 0.00 | 0.00 |
| 15,600.0 | 90.00 | 359.64 | 6,530.0 | 8,716.2 | 391.8 | 8,713.6 | 0.00 | 0.00 | 0.00 |
| 15,700.0 | 90.00 | 359.64 | 6,530.0 | 8,816.2 | 391.2 | 8,813.6 | 0.00 | 0.00 | 0.00 |
| 15,800.0 | 90.00 | 359.64 | 6,530.0 | 8,916.2 | 390.6 | 8,913.6 | 0.00 | 0.00 | 0.00 |
| 15,900.0 | 90.00 | 359.64 | 6,530.0 | 9,016.2 | 389.9 | 9,013.6 | 0.00 | 0.00 | 0.00 |
| 16,000.0 | 90.00 | 359.64 | 6,530.0 | 9,116.2 | 389.3 | 9,113.6 | 0.00 | 0.00 | 0.00 |
| 16,100.0 | 90.00 | 359.64 | 6,530.0 | 9,216.2 | 388.7 | 9,213.6 | 0.00 | 0.00 | 0.00 |
| 16,200.0 | 90.00 | 359.64 | 6,530.0 | 9,316.2 | 388.1 | 9,313.6 | 0.00 | 0.00 | 0.00 |
| 16,300.0 | 90.00 | 359.64 | 6,530.0 | 9,416.2 | 387.5 | 9,413.6 | 0.00 | 0.00 | 0.00 |
| 16,400.0 | 90.00 | 359.64 | 6,530.0 | 9,516.2 | 386.8 | 9,513.6 | 0.00 | 0.00 | 0.00 |
| 16,500.0 | 90.00 | 359.64 | 6,530.0 | 9,616.2 | 386.2 | 9,613.6 | 0.00 | 0.00 | 0.00 |
| 16,600.0 | 90.00 | 359.64 | 6,530.0 | 9,716.2 | 385.6 | 9,713.6 | 0.00 | 0.00 | 0.00 |
| 16,700.0 | 90.00 | 359.64 | 6,530.0 | 9,816.2 | 385.0 | 9,813.6 | 0.00 | 0.00 | 0.00 |
| 16,800.0 | 90.00 | 359.64 | 6,530.0 | 9,916.2 | 384.3 | 9,913.6 | 0.00 | 0.00 | 0.00 |
| 16,855.8 | 90.00 | 359.64 | 6,530.0 | 9,972.0 | 384.0 | 9,969.4 | 0.00 | 0.00 | 0.00 |
| TD at 16855.8 | | | | | | | | | |



Intrepid Planning Report



| | | | |
|------------------|--|-------------------------------------|----------------------------|
| Database: | EDM 5000.15 Single User Db | Local Co-ordinate Reference: | Well Schlitz Fed Com #142H |
| Company: | Tap Rock Resources, LLC | TVD Reference: | KB @ 3453.0usft |
| Project: | Eddy County, NM (NAD 83 NME) | MD Reference: | KB @ 3453.0usft |
| Site: | (Schlitz Fed Com) Sec-16_T-25-S_R-26-E | North Reference: | Grid |
| Well: | Schlitz Fed Com #142H | Survey Calculation Method: | Minimum Curvature |
| Wellbore: | OWB | | |
| Design: | Plan #1 | | |

| Design Targets | | | | | | | | | |
|--|-----------|----------|---------|---------|--------|------------|------------|-----------------|------------------|
| Target Name | | | | | | | | | |
| - hit/miss target | Dip Angle | Dip Dir. | TVD | +N/-S | +E/-W | Northing | Easting | Latitude | Longitude |
| - Shape | (°) | (°) | (usft) | (usft) | (usft) | (usft) | (usft) | | |
| KOP (Schlitz Fed Com - plan misses target center by 114.7usft at 6048.2usft MD (6000.8 TVD, -544.2 N, 335.3 E) - Point | 0.00 | 0.00 | 6,000.0 | -546.0 | 450.0 | 408,500.00 | 551,354.00 | 32° 7' 22.949 N | 104° 18' 3.519 W |
| FPP1 (Schlitz Fed Cor - plan misses target center by 0.1usft at 11524.7usft MD (6530.0 TVD, 4641.0 N, 417.1 E) - Point | 0.00 | 0.00 | 6,530.0 | 4,641.0 | 417.0 | 413,687.00 | 551,321.00 | 32° 8' 14.281 N | 104° 18' 3.885 W |
| FPP2 (Schlitz Fed Cor - plan misses target center by 0.1usft at 12850.7usft MD (6530.0 TVD, 5967.0 N, 408.9 E) - Point | 0.00 | 0.00 | 6,530.0 | 5,967.0 | 409.0 | 415,013.00 | 551,313.00 | 32° 8' 27.403 N | 104° 18' 3.973 W |
| FTP (Schlitz Fed Com - plan misses target center by 216.0usft at 6495.6usft MD (6389.8 TVD, -350.4 N, 372.8 E) - Point | 0.00 | 0.00 | 6,530.0 | -496.0 | 449.0 | 408,550.00 | 551,353.00 | 32° 7' 23.444 N | 104° 18' 3.531 W |
| LTP (Schlitz Fed Com - plan misses target center by 0.4usft at 16760.8usft MD (6530.0 TVD, 9877.0 N, 384.6 E) - Point | 0.00 | 0.00 | 6,530.0 | 9,877.0 | 385.0 | 418,923.00 | 551,289.00 | 32° 9' 6.097 N | 104° 18' 4.239 W |
| PBHL (Schlitz Fed Cor - plan hits target center - Rectangle (sides W100.0 H10,468.0 D30.0) | 0.00 | 359.64 | 6,530.0 | 9,972.0 | 384.0 | 419,018.00 | 551,288.00 | 32° 9' 7.037 N | 104° 18' 4.250 W |

| Formations | | | | | | |
|-----------------------|-----------------------|----------------------|-----------|---------|-------------------|--|
| Measured Depth (usft) | Vertical Depth (usft) | Name | Lithology | Dip (°) | Dip Direction (°) | |
| 105.0 | 105.0 | Rustler Anhydrite | | | | |
| 455.0 | 455.0 | Top Salt | | | | |
| 1,697.5 | 1,690.0 | Base Salt | | | | |
| 1,915.2 | 1,905.0 | Delaware Mountain Gp | | | | |
| 1,915.2 | 1,905.0 | Lamar | | | | |
| 1,945.6 | 1,935.0 | Bell Canyon | | | | |
| 1,960.8 | 1,950.0 | Ramsey Sand | | | | |
| 2,938.2 | 2,915.0 | Cherry Canyon | | | | |
| 3,824.4 | 3,790.0 | Brushy Canyon | | | | |
| 5,487.3 | 5,440.0 | Bone Spring Lime | | | | |
| 5,632.3 | 5,585.0 | Upper Avalon | | | | |
| 5,892.3 | 5,845.0 | Middle Avalon | | | | |
| 6,410.9 | 6,330.0 | 1st Bone Spring Sand | | | | |
| 6,799.0 | 6,520.0 | 2nd Bone Spring Carb | | | | |



Intrepid Planning Report



| | | | |
|------------------|--|-------------------------------------|----------------------------|
| Database: | EDM 5000.15 Single User Db | Local Co-ordinate Reference: | Well Schlitz Fed Com #142H |
| Company: | Tap Rock Resources, LLC | TVD Reference: | KB @ 3453.0usft |
| Project: | Eddy County, NM (NAD 83 NME) | MD Reference: | KB @ 3453.0usft |
| Site: | (Schlitz Fed Com) Sec-16_T-25-S_R-26-E | North Reference: | Grid |
| Well: | Schlitz Fed Com #142H | Survey Calculation Method: | Minimum Curvature |
| Wellbore: | OWB | | |
| Design: | Plan #1 | | |

| Plan Annotations | | | | |
|-----------------------|-----------------------|-------------------|--------------|--------------------------------|
| Measured Depth (usft) | Vertical Depth (usft) | Local Coordinates | | Comment |
| | | +N/-S (usft) | +E/-W (usft) | |
| 500.0 | 500.0 | 0.0 | 0.0 | NUDGE - Build 1.00 |
| 1,413.2 | 1,409.4 | -61.9 | 38.0 | HOLD - 3120.8 at 1413.2 MD |
| 4,534.0 | 4,490.6 | -484.1 | 297.0 | DROP - -1.00 |
| 5,447.3 | 5,400.0 | -546.0 | 335.0 | HOLD - 555.5 at 5447.3 MD |
| 6,002.8 | 5,955.5 | -546.0 | 335.0 | KOP - Build 10.00 |
| 6,452.8 | 6,360.6 | -381.3 | 367.0 | BLD/TRN - DLS 10.00 TFO -9.15 |
| 6,906.5 | 6,530.0 | 23.7 | 418.1 | EOC - 205.0 hold at 6906.5 MD |
| 7,111.5 | 6,530.0 | 228.1 | 434.2 | Start DLS 2.00 TFO -90.00 |
| 7,354.2 | 6,530.0 | 470.6 | 443.0 | Start 9501.6 hold at 7354.2 MD |
| 16,855.8 | 6,530.0 | 9,972.0 | 384.0 | TD at 16855.8 |

PECOS DISTRICT DRILLING CONDITIONS OF APPROVAL

| | |
|-----------------------------|-------------------------|
| OPERATOR'S NAME: | Tap Rock Operating LLC |
| WELL NAME & NO.: | Schlitz Fed Com 142H |
| LOCATION: | Sec 16-25S-26E-NMP |
| COUNTY: | Eddy County, New Mexico |

COA

| | | | | |
|--|---|--|---|---|
| H₂S | <input type="radio"/> No | <input checked="" type="radio"/> Yes | | |
| Potash / WIPP | <input checked="" type="radio"/> None | <input type="radio"/> Secretary | <input type="radio"/> R-111-P | <input type="checkbox"/> WIPP |
| Cave / Karst | <input type="radio"/> Low | <input type="radio"/> Medium | <input type="radio"/> High | <input checked="" type="radio"/> Critical |
| Wellhead | <input type="radio"/> Conventional | <input checked="" type="radio"/> Multibowl | <input type="radio"/> Both | <input type="radio"/> Diverter |
| Cementing | <input type="checkbox"/> Primary Squeeze | <input type="checkbox"/> Cont. Squeeze | <input type="checkbox"/> EchoMeter | <input type="checkbox"/> DV Tool |
| Special Req | <input type="checkbox"/> Break Testing | <input type="checkbox"/> Water Disposal | <input checked="" type="checkbox"/> COM | <input type="checkbox"/> Unit |
| Variance | <input checked="" type="checkbox"/> Flex Hose | <input type="checkbox"/> Casing Clearance | <input type="checkbox"/> Pilot Hole | <input type="checkbox"/> Capitan Reef |
| Variance | <input type="checkbox"/> Four-String | <input type="checkbox"/> Offline Cementing | <input type="checkbox"/> Fluid-Filled | <input type="checkbox"/> Open Annulus |
| <input type="checkbox"/> Batch APD / Sundry | | | | |

A. HYDROGEN SULFIDE

A Hydrogen Sulfide (H₂S) Drilling Plan shall be activated 500 feet prior to drilling into the **Delaware & Bone Spring** formations. As a result, the Hydrogen Sulfide area must meet all requirements from 43 CFR 3176, which includes equipment and personnel/public protection items. If Hydrogen Sulfide is encountered, please provide measured values and formations to the BLM.

B. CASING

1. The **11 ¾** inch surface casing shall be set at approximately 350 feet (a minimum of 70 feet (Eddy County) into the Rustler Anhydrite, above the salt, and below usable fresh water) and cemented to the surface.
 - a. If cement does not circulate to the surface, the appropriate BLM office shall be notified and a temperature survey utilizing an electronic type temperature survey with surface log readout will be used or a cement bond log shall be run to verify the top of the cement. Temperature survey will be run a minimum of six hours after pumping cement and ideally between 8-10 hours after completing the cement job.
 - b. Wait on cement (WOC) time for a primary cement job will be a minimum of **8 hours** or 500 pounds compressive strength, whichever is greater. (This is to

- include the lead cement)
- c. Wait on cement (WOC) time for a remedial job will be a minimum of 4 hours after bringing cement to surface or 500 pounds compressive strength, whichever is greater.
 - d. If cement falls back, remedial cementing will be done prior to drilling out that string.
2. The minimum required fill of cement behind the **8-5/8** inch intermediate casing (*set at 1910 per BLM geologist*) is:
 - Cement to surface. If cement does not circulate see B.1.a, c-d above. **Wait on cement (WOC) time for a primary cement job is to include the lead cement slurry due to cave/karst, Capitan Reef, or potash.**
 - ❖ In Critical Cave/Karst Areas cement must come to surface on the first three casing strings.
 3. The minimum required fill of cement behind the **5-1/2** inch production casing is:
 - Cement to surface. If cement does not circulate, contact the appropriate BLM office. **Wait on cement (WOC) time for a primary cement job is to include the lead cement slurry due to cave/karst, Capitan Reef, or potash.**

C. PRESSURE CONTROL

1. Variance approved to use flex line from BOP to choke manifold. Manufacturer's specification to be readily available. No external damage to flex line. Flex line to be installed as straight as possible (no hard bends).'
2. Operator has proposed a multi-bowl wellhead assembly. Minimum working pressure of the blowout preventer (BOP) and related equipment (BOPE) required for drilling below the surface casing shoe shall be **5000 (5M)** psi.
 - a. Wellhead shall be installed by manufacturer's representatives, submit documentation with subsequent sundry.
 - b. If the welding is performed by a third party, the manufacturer's representative shall monitor the temperature to verify that it does not exceed the maximum temperature of the seal.
 - c. Manufacturer representative shall install the test plug for the initial BOP test.
 - d. If the cement does not circulate and one inch operations would have been possible with a standard wellhead, the well head shall be cut off, cementing operations performed and another wellhead installed.
 - e. Whenever any seal subject to test pressure is broken, all the tests in 43 CFR 3172 must be followed.

D. SPECIAL REQUIREMENT (S)**Communitization Agreement**

- The operator will submit a Communitization Agreement to the Santa Fe Office, 301 Dinosaur Trail Santa Fe, New Mexico 87508, at least 90 days before the anticipated date of first production from a well subject to a spacing order issued by the New Mexico Oil Conservation Division. The Communitization Agreement will include the signatures of all working interest owners in all Federal and Indian leases subject to the Communitization Agreement (i.e., operating rights owners and lessees of record), or certification that the operator has obtained the written signatures of all such owners and will make those signatures available to the BLM immediately upon request.
- The operator will submit an as-drilled survey well plat of the well completion, but are not limited to, those specified in 43 CFR 3171 and 3172.
- If the operator does not comply with this condition of approval, the BLM may take enforcement actions that include, but are not limited to, those specified in 43 CFR 3163.1.
- In addition, the well sign shall include the surface and bottom hole lease numbers. When the Communitization Agreement number is known, it shall also be on the sign.

GENERAL REQUIREMENTS

The BLM is to be notified in advance for a representative to witness:

- a. Spudding well (minimum of 24 hours)
- b. Setting and/or Cementing of all casing strings (minimum of 4 hours)
- c. BOPE tests (minimum of 4 hours)

☒ Eddy County

Email **or** call the Carlsbad Field Office, 620 East Greene St., Carlsbad, NM 88220, **BLM_NM_CFO_DrillingNotifications@BLM.GOV**
(575) 361-2822

☒ Lea County

Call the Hobbs Field Station, 414 West Taylor, Hobbs NM 88240,
(575) 689-5981

1. Unless the production casing has been run and cemented or the well has been properly plugged, the drilling rig shall not be removed from over the hole without prior approval.
 - a. In the event the operator has proposed to drill multiple wells utilizing a skid/walking rig. Operator shall secure the wellbore on the current well, after installing and testing the wellhead, by installing a blind flange of like pressure

- rating to the wellhead and a pressure gauge that can be monitored while drilling is performed on the other well(s).
- b. When the operator proposes to set surface casing with Spudder Rig
 - Notify the BLM when moving in and removing the Spudder Rig.
 - Notify the BLM when moving in the 2nd Rig. Rig to be moved in within 90 days of notification that Spudder Rig has left the location.
 - BOP/BOPE test to be conducted per **43 CFR part 3170 Subpart 3172** as soon as 2nd Rig is rigged up on well.
 2. Floor controls are required for 3M or Greater systems. These controls will be on the rig floor, unobstructed, readily accessible to the driller and will be operational at all times during drilling and/or completion activities. Rig floor is defined as the area immediately around the rotary table; the area immediately above the substructure on which the draw works are located, this does not include the dog house or stairway area.
 3. The record of the drilling rate along with the GR/N well log run from TD to surface (horizontal well – vertical portion of hole) shall be submitted to the BLM office as well as all other logs run on the borehole 30 days from completion. If available, a digital copy of the logs is to be submitted in addition to the paper copies. The Rustler top and top and bottom of Salt are to be recorded on the Completion Report.

A. CASING

1. Changes to the approved APD casing program need prior approval if the items substituted are of lesser grade or different casing size or are Non-API. The Operator can exchange the components of the proposal with that of superior strength (i.e. changing from J-55 to N-80, or from 36# to 40#). Changes to the approved cement program need prior approval if the altered cement plan has less volume or strength or if the changes are substantial (i.e. Multistage tool, ECP, etc.). The initial wellhead installed on the well will remain on the well with spools used as needed.
2. Wait on cement (WOC) for Potash Areas: After cementing but before commencing any tests, the casing string shall stand cemented under pressure until both of the following conditions have been met: 1) cement reaches a minimum compressive strength of 500 psi for all cement blends, 2) until cement has been in place at least 24 hours. WOC time will be recorded in the driller's log. The casing integrity test can be done (prior to the cement setting up) immediately after bumping the plug.
3. Wait on cement (WOC) for Water Basin: After cementing but before commencing any tests, the casing string shall stand cemented under pressure until both of the following conditions have been met: 1) cement reaches a minimum compressive strength of 500 psi at the shoe, 2) until cement has been in place at least 8 hours. WOC time will be recorded in the driller's log. See individual casing strings for details regarding lead cement slurry requirements. The casing integrity test can be done (prior to the cement setting up) immediately after bumping the plug.

4. Provide compressive strengths including hours to reach required 500 pounds compressive strength prior to cementing each casing string. Have well specific cement details onsite prior to pumping the cement for each casing string.
5. No pea gravel permitted for remedial or fall back remedial without prior authorization from the BLM engineer.
6. On that portion of any well approved for a 5M BOPE system or greater, a pressure integrity test of each casing shoe shall be performed. Formation at the shoe shall be tested to a minimum of the mud weight equivalent anticipated to control the formation pressure to the next casing depth or at total depth of the well. This test shall be performed before drilling more than 20 feet of new hole.
7. If hardband drill pipe is rotated inside casing, returns will be monitored for metal. If metal is found in samples, drill pipe will be pulled and rubber protectors which have a larger diameter than the tool joints of the drill pipe will be installed prior to continuing drilling operations.
8. Whenever a casing string is cemented in the R-111-P potash area, the NMOCD requirements shall be followed.

B. PRESSURE CONTROL

1. All blowout preventer (BOP) and related equipment (BOPE) shall comply with well control requirements as described in **43 CFR part 3170 Subpart 3172** and **API STD 53 Sec. 5.3**.
2. If a variance is approved for a flexible hose to be installed from the BOP to the choke manifold, the following requirements apply: The flex line must meet the requirements of API 16C. Check condition of flexible line from BOP to choke manifold, replace if exterior is damaged or if line fails test. Line to be as straight as possible with no hard bends and is to be anchored according to Manufacturer's requirements. The flexible hose can be exchanged with a hose of equal size and equal or greater pressure rating. Anchor requirements, specification sheet and hydrostatic pressure test certification matching the hose in service, to be onsite for review. These documents shall be posted in the company man's trailer and on the rig floor.
3. 5M or higher system requires an HCR valve, remote kill line and annular to match. The remote kill line is to be installed prior to testing the system and tested to stack pressure.
4. If the operator has proposed a multi-bowl wellhead assembly in the APD. The following requirements must be met:

- a. Wellhead shall be installed by manufacturer's representatives, submit documentation with subsequent sundry.
 - b. If the welding is performed by a third party, the manufacturer's representative shall monitor the temperature to verify that it does not exceed the maximum temperature of the seal.
 - c. Manufacturer representative shall install the test plug for the initial BOP test.
 - d. Whenever any seal subject to test pressure is broken, all the tests in **43 CFR part 3170 Subpart 3172** must be followed.
 - e. If the cement does not circulate and one inch operations would have been possible with a standard wellhead, the well head shall be cut off, cementing operations performed and another wellhead installed.
5. The appropriate BLM office shall be notified a minimum of 4 hours in advance for a representative to witness the tests.
 - a. In a water basin, for all casing strings utilizing slips, these are to be set as soon as the crew and rig are ready and any fallback cement remediation has been done. The casing cut-off and BOP installation can be initiated four hours after installing the slips, which will be approximately six hours after bumping the plug. For those casing strings not using slips, the minimum wait time before cut-off is eight hours after bumping the plug. BOP/BOPE testing can begin after cut-off or once cement reaches 500 psi compressive strength (including lead cement), whichever is greater. However, if the float does not hold, cut-off cannot be initiated until cement reaches 500 psi compressive strength (including lead when specified).
 - b. In potash areas, for all casing strings utilizing slips, these are to be set as soon as the crew and rig are ready and any fallback cement remediation has been done. For all casing strings, casing cut-off and BOP installation can be initiated at twelve hours after bumping the cement plug. The BOPE test can be initiated after bumping the cement plug with the casing valve open. (only applies to single stage cement jobs, prior to the cement setting up.)
 - c. The tests shall be done by an independent service company utilizing a test plug not a cup or J-packer and can be initiated immediately with the casing valve open. The operator also has the option of utilizing an independent tester to test without a plug (i.e. against the casing) pursuant to **43 CFR part 3170 Subpart 3172** with the pressure not to exceed 70% of the burst rating for the casing. Any test against the casing must meet the WOC time for water basin (8 hours) or potash (24 hours) or 500 pounds compressive strength, whichever is greater, prior to initiating the test (see casing segment as lead cement may be critical item).
 - d. The test shall be run on a 5000 psi chart for a 2-3M BOP/BOP, on a 10000 psi chart for a 5M BOP/BOPE and on a 15000 psi chart for a 10M BOP/BOPE.

If a linear chart is used, it shall be a one hour chart. A circular chart shall have a maximum 2 hour clock. If a twelve hour or twenty-four hour chart is used, tester shall make a notation that it is run with a two hour clock.

- e. The results of the test shall be reported to the appropriate BLM office.
- f. All tests are required to be recorded on a calibrated test chart. A copy of the BOP/BOPE test chart and a copy of independent service company test will be submitted to the appropriate BLM office.
- g. The BOP/BOPE test shall include a low pressure test from 250 to 300 psi. The test will be held for a minimum of 10 minutes if test is done with a test plug and 30 minutes without a test plug. This test shall be performed prior to the test at full stack pressure.
- h. BOP/BOPE must be tested by an independent service company within 500 feet of the top of the Wolfcamp formation if the time between the setting of the intermediate casing and reaching this depth exceeds 20 days. This test does not exclude the test prior to drilling out the casing shoe as per **43 CFR part 3170 Subpart 3172**.

C. DRILLING MUD

Mud system monitoring equipment, with derrick floor indicators and visual and audio alarms, shall be operating before drilling into the Wolfcamp formation, and shall be used until production casing is run and cemented.

D. WASTE MATERIAL AND FLUIDS

All waste (i.e. drilling fluids, trash, salts, chemicals, sewage, gray water, etc.) created as a result of drilling operations and completion operations shall be safely contained and disposed of properly at a waste disposal facility. No waste material or fluid shall be disposed of on the well location or surrounding area.

Porto-johns and trash containers will be on-location during fracturing operations or any other crew-intensive operations.



Hydrogen Sulfide Drilling

Operations Plan

Tap Rock Resources

1 H2S safety instructions to the following:

- Characteristics of H2S
- Physical effects and hazards
- Principal and operation of H2S detectors, warning system and briefing areas
- Evacuation procedures, routes and first aid
- Proper use of safety equipment & life support systems
- Essential personnel meeting medical evaluation criteria will receive additional training on the proper use of 30min pressure demand air packs

2 H2S Detection and Alarm Systems:

- H2S sensor/detectors to be located on the drilling rig floor, in the base of the sub structure / cellar area, on the mud pits in the shale shaker area. Additional H2S detectors may be placed as deemed necessary
- An audio alarm system will be installed on the derrick floor and in the doghouse

3 Windssocks and / Wind Streamers:

- Windssocks at mud pit area should be high enough to be visible
- Windssock on the rig floor and / top of doghouse should be high enough to be visible

4 Condition Flags and Signs:

- Warning sign on access road to location
- Flags to be displayed on sign at entrance to location
 - Green Flag – Normal Safe Operation Condition
 - Yellow Flag – Potential Pressure and Danger
 - Red Flag – Danger (H2S present in dangerous concentrations) Only H2S trained personnel admitted on location

5 Well Control Equipment:

- See Drilling Operations Plan Schematics

6 Communication:

- While working under masks chalkboards will be used for communications
- Hand signals will be used where chalk board is inappropriate
- Two way radio will be used to communicate off location in case of emergency help is required. In most cases cellular telephones will be available at most drilling foreman's trailer or living quarters.



7 Drilling Stem Testing:

- No DST cores are planned at this time

8 Drilling contractor supervisor will be required to be familiar with the effects H₂S has on tubulars good and other mechanical equipment

9 If H₂S is encountered, mud system will be altered if necessary to maintain control of formation. A mud gas separator will be brought into service along with H₂S scavengers if necessary

11 Emergency Contacts

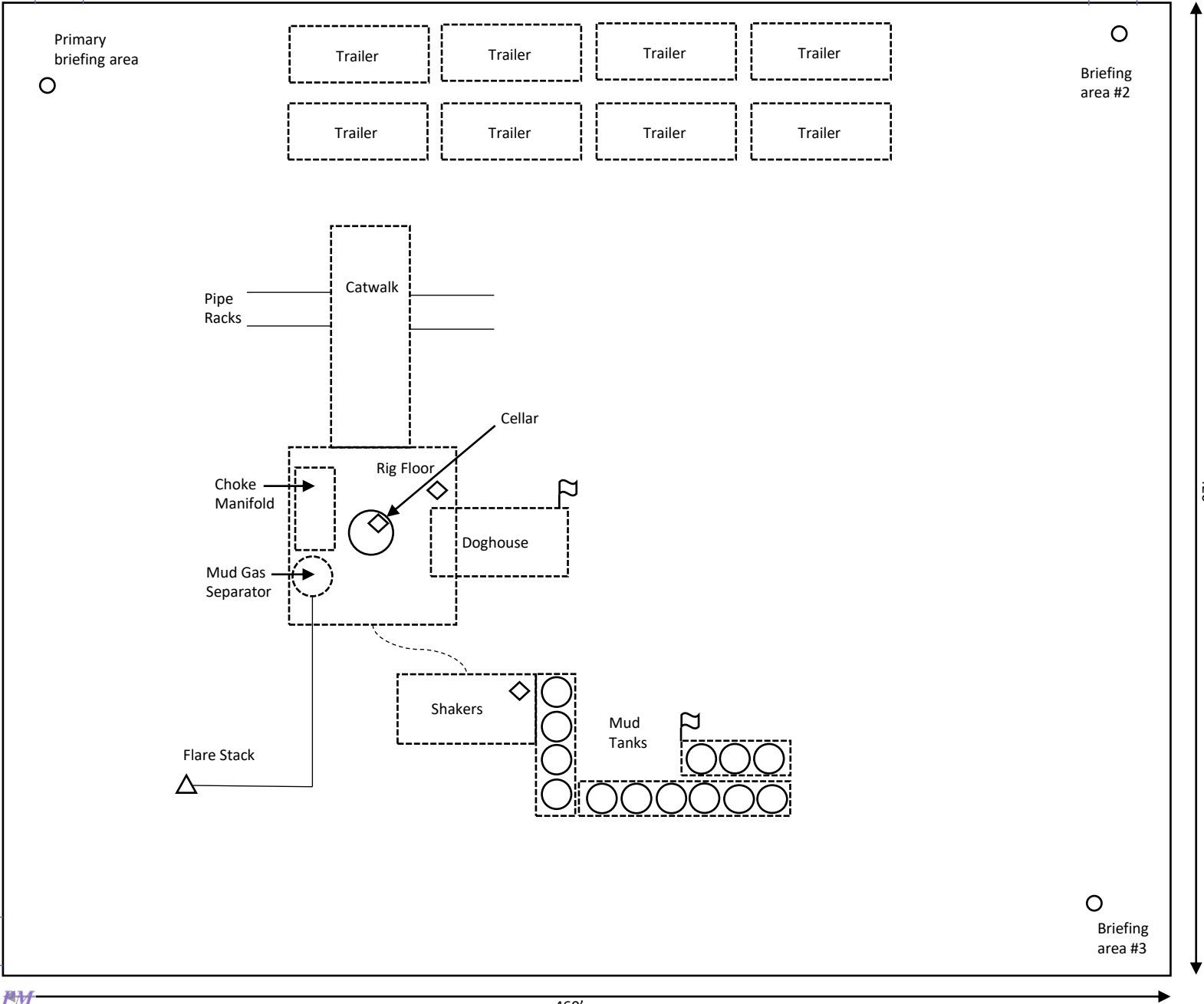
| Emergency Contacts | | |
|----------------------------|--------------|-----|
| Carlsbad Police Department | 575.887.7551 | 911 |
| Carlsbad Medical Center | 575.887.4100 | 911 |
| Eddy County Fire Service | 575.628.5450 | 911 |
| Eddy County Sherriff | 575.887.7551 | 911 |
| Lea County Fire Service | 575.391.2983 | 911 |
| Lea County Sherriff | 575.396.3611 | 911 |
| Jal Police Department | 575.395.2121 | 911 |
| Jal Fire Department | 575.395.2221 | 911 |
| Tap Rock Resources | 720.772.5090 | |

Rig Diagram
Schlitz Fed Com W2 Pad
Tap Rock Operating, LLC
16-25S-26E
Eddy County, NM

- N ↑
- Briefing Area
- Current Well
- △ Flare Stack
- ◇ H2S Monitor
- ⤿ Wind Indicator
- Mud Gas Separator

Condition
Warning
Sign

Access
Road



Tap Rock Operating LLC

Schlitz Fed Com W2 Pad
H2S Contingency Plan:
2 Mile Radius Map

Sec. 16, Township 25S, Range 26E
Eddy County, New Mexico

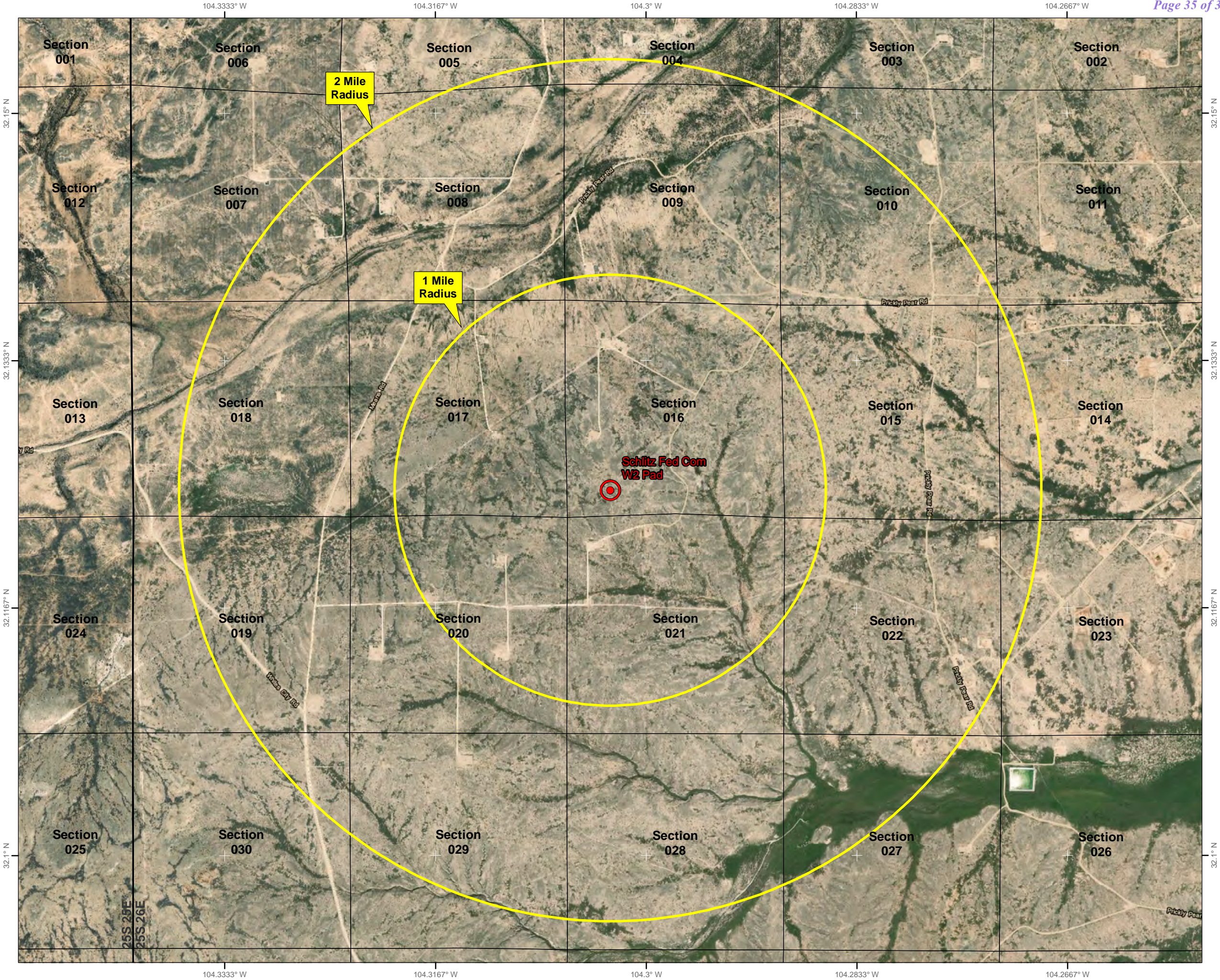
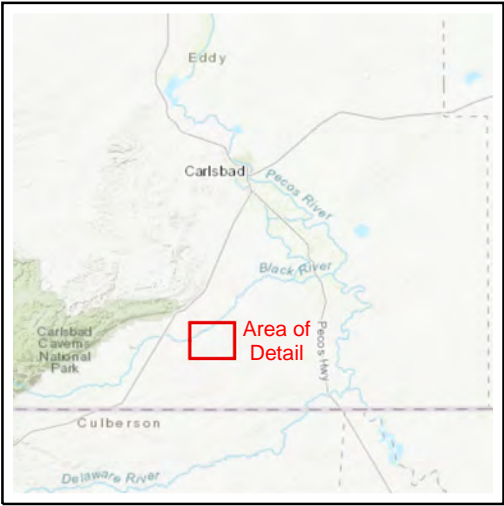
 Well Pad Location



NAD 1983 New Mexico State Plane East
FIPS 3001 Feet



Prepared by Permits West, Inc., November 3, 2020
for Tap Rock Operating, LLC



District I
1625 N. French Dr., Hobbs, NM 88240
Phone:(575) 393-6161 Fax:(575) 393-0720
District II
811 S. First St., Artesia, NM 88210
Phone:(575) 748-1283 Fax:(575) 748-9720
District III
1000 Rio Brazos Rd., Aztec, NM 87410
Phone:(505) 334-6178 Fax:(505) 334-6170
District IV
1220 S. St Francis Dr., Santa Fe, NM 87505
Phone:(505) 476-3470 Fax:(505) 476-3462

State of New Mexico
Energy, Minerals and Natural Resources
Oil Conservation Division
1220 S. St Francis Dr.
Santa Fe, NM 87505

CONDITIONS

Action 298049

CONDITIONS

| | |
|--|---|
| Operator: TAP ROCK OPERATING, LLC 523 Park Point Drive Golden, CO 80401 | OGRID: |
| | 372043 |
| | Action Number: 298049 |
| | Action Type: [C-101] BLM - Federal/Indian Land Lease (Form 3160-3) |

CONDITIONS

| Created By | Condition | Condition Date |
|-------------|--|----------------|
| ward.rikala | Notify OCD 24 hours prior to casing & cement | 1/25/2024 |
| ward.rikala | Will require a File As Drilled C-102 and a Directional Survey with the C-104 | 1/25/2024 |
| ward.rikala | Once the well is spud, to prevent ground water contamination through whole or partial conduits from the surface, the operator shall drill without interruption through the fresh water zone or zones and shall immediately set in cement the water protection string | 1/25/2024 |
| ward.rikala | Cement is required to circulate on both surface and intermediate1 strings of casing | 1/25/2024 |
| ward.rikala | If cement does not circulate on any string, a CBL is required for that string of casing | 1/25/2024 |
| ward.rikala | Oil base muds are not to be used until fresh water zones are cased and cemented providing isolation from the oil or diesel. This includes synthetic oils. Oil based mud, drilling fluids and solids must be contained in a steel closed loop system | 1/25/2024 |