

Well Name: PHANTOM BANK 31 FED	Well Location: T26S / R31E / SEC 32 / LOT D / 32.004657 / -103.807627	County or Parish/State: EDDY / NM
Well Number: 506H	Type of Well: OIL WELL	Allottee or Tribe Name:
Lease Number: NMNM138868	Unit or CA Name:	Unit or CA Number:
US Well Number: 300154702300S1	Well Status: Producing Gas Well	Operator: FLAT CREEK RESOURCES LLC

Notice of Intent

Sundry ID: 2156594

Type of Submission: Notice of Intent	Type of Action: Other
Date Sundry Submitted: 04/13/2021	Time Sundry Submitted: 08:41
Date proposed operation will begin: 05/10/2021	

Procedure Description: Change the surface location on the same pad, change the bottom hole location, and change the formation drilled. Revised the casing and cementing programs.

Surface Disturbance

Is any additional surface disturbance proposed?: No

NOI Attachments

Procedure Description

- Phantom_Bank_31_Fed_Com_Pad_1_SUP_New_R1_Cert_4_12_21_20210413084129.pdf
- Phantom_Bank_31_Fed_Com_Pad_1_No.506H__Well_Plat_Cert_4_12_21_20210413084117.pdf
- Phantom_Bank_31_Fed_Com_Pad_1_No.506H__Road_Plat_Cert_4_12_21_20210413084104.pdf
- PHANTOM_BANK_31_FED_COM_506H_C_102_New_R_Cert_4_12_21_20210413084055.pdf
- Compass_Cementing_Program_revised_20210412144526.pdf
- ULTRA____DQX_5.000_0.362_P110_03122021__1__20210412144452.pdf
- 5.5_x_20___.361__USS_RYS110_USS_TALON_HTQ_RD5.900_03_11_21_20210412144445.pdf
- 506H_Casing_design_20210412144435.xlsx

Well Name: PHANTOM BANK 31 FED

Well Location: T26S / R31E / SEC 32 /
LOT D / 32.004657 / -103.807627

County or Parish/State: EDDY /
NM

Well Number: 506H

Type of Well: OIL WELL

Allottee or Tribe Name:

Lease Number: NMNM138868

Unit or CA Name:

Unit or CA Number:

US Well Number: 300154702300S1

Well Status: Producing Gas Well

Operator: FLAT CREEK
RESOURCES LLC

506H_Formation_Tops_20210412144359.xlsx

506H_Directional_Plan_20210412144351.xlsx

Sundry_506H_Surface_Use_Plan_of_Operations_20210412144342.docx

Sundry_506H_Produced_Water_Disposal_20210412144334.docx

Sundry_506H_Drilling_Plan_20210412144326.docx

Sundry_506H_Application_20210412144315.docx

Conditions of Approval

Additional

Phantom_Bank_31_Fed_Com_506H_Sundry_ID_2156594_20210414141241.pdf

Operator

I certify that the foregoing is true and correct. Title 18 U.S.C. Section 1001 and Title 43 U.S.C. Section 1212, make it a crime for any person knowingly and willfully to make to any department or agency of the United States any false, fictitious or fraudulent statements or representations as to any matter within its jurisdiction. Electronic submission of Sundry Notices through this system satisfies regulations requiring a

Operator Electronic Signature: RODNEY LITTLETON

Signed on: APR 13, 2021 08:46 AM

Name: FLAT CREEK RESOURCES LLC

Title: Vice President – Operations

Street Address: 777 Main Street, Suite 3600

City: Fort Worth

State: TX

Phone: (817) 310-8578

Email address: rodney.littleton@flatcreekresources.com

Field

Representative Name:

Street Address:

City:

State:

Zip:

Phone:

Email address:

BLM Point of Contact

BLM POC Name: CHRISTOPHER WALLS

BLM POC Title: Petroleum Engineer

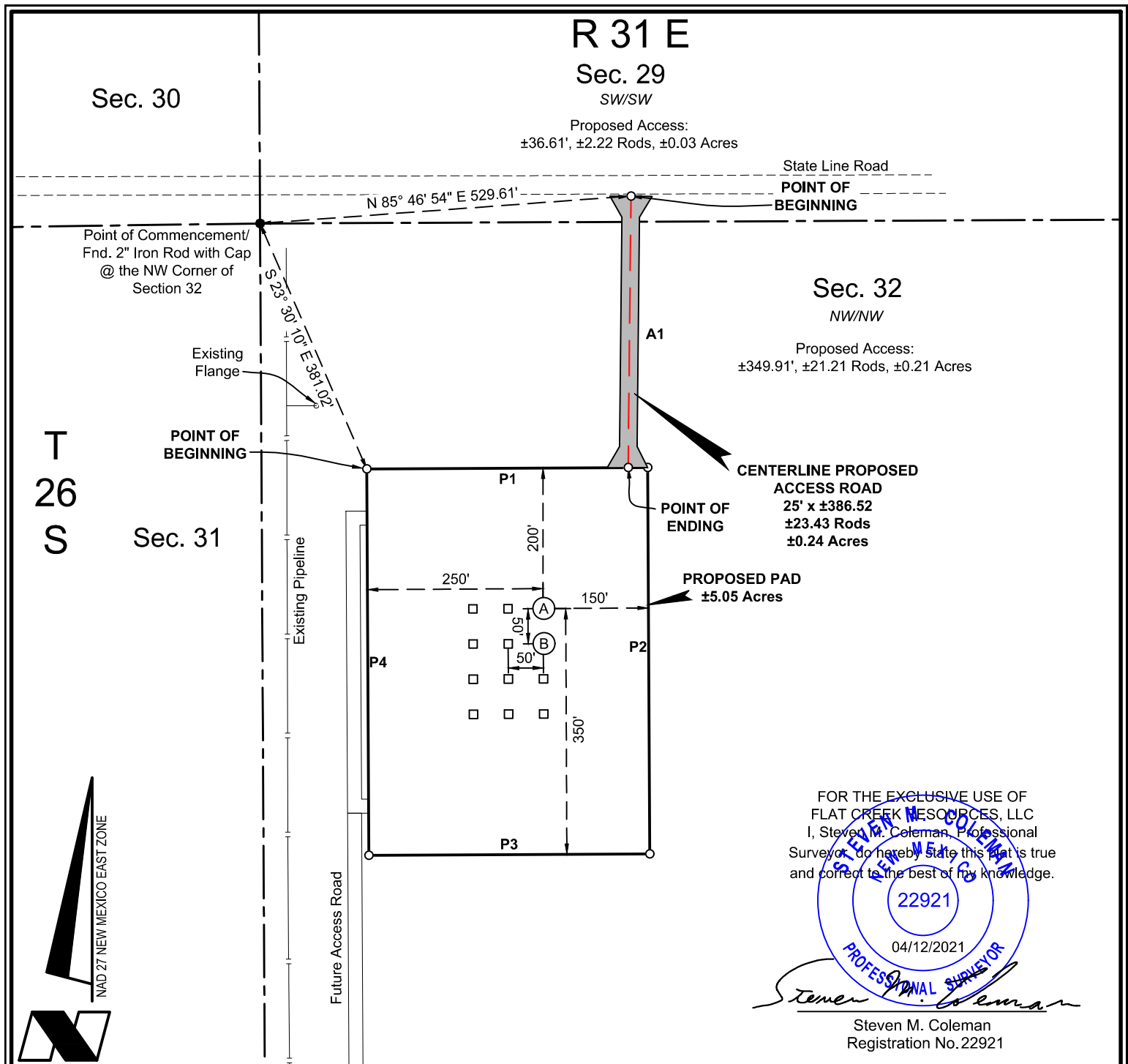
BLM POC Phone: 5752342234

BLM POC Email Address: cwalls@blm.gov

Disposition: Approved

Disposition Date: 04/14/2021

Signature: Chris Walls



SURFACE USE PLAT

Scale: 1" = 200'

200' 0 100' 200'

Page 1 of 2

FLAT CREEK RESOURCES, LLC
PROPOSED PAD & ACCESS ROADS
PHANTOM BANK 31 FED COM NORTH PAD
SECTIONS 29 & 32, T26S-R31E
EDDY COUNTY, NEW MEXICO



C. H. Fenstermaker & Associates, L.L.C.
 135 Regency Sq. Lafayette, LA 70508
 Ph. 337-237-2200 Fax. 337-232-3299
www.fenstermaker.com

REVISIONS				
DRAWN BY:	#	BY:	DATE:	DESCRIPTION:
PROJ. MGR.: GDG	1	DMB	04/06/2021	Revise access and wells
DATE: 09/05/2019				
FILENAME: T:\2019\2199965\DWG\Phantom Bank 31 Fed Com Pad 1 SUP_New.dwg				

NW PAD CORNER		NE PAD CORNER	
X=	662,855	X=	663,255
Y=	365,972	Y=	365,974
LAT.	32.005082° N	LAT.	32.005082° N
LONG.	103.807960° W	LONG.	103.806669° W
X=	704,042	X=	704,442
Y=	366,029	Y=	366,031
LAT.	32.005207° N	LAT.	32.005207° N
LONG.	103.808434° W	LONG.	103.807143° W
ELEV.	+3,129' NAVD88	ELEV.	+3,135' NAVD88
SW PAD CORNER		SE PAD CORNER	
X=	662,858	X=	663,258
Y=	365,422	Y=	365,424
LAT.	32.003570° N	LAT.	32.003570° N
LONG.	103.807958° W	LONG.	103.806668° W
X=	704,045	X=	704,445
Y=	365,479	Y=	365,481
LAT.	32.003695° N	LAT.	32.003695° N
LONG.	103.808432° W	LONG.	103.807142° W
ELEV.	+3,120' NAVD88	ELEV.	+3,125' NAVD88

POINT OF BEGINNING ACCESS ROAD		POINT OF ENDING ACCESS ROAD	
X=	663,231'	X=	663,227'
Y=	366,360'	Y=	365,973'
LAT.	32.006144° N	LAT.	32.005082° N
LONG.	103.806740° W	LONG.	103.806759° W
X=	704,418'	X=	704,414'
Y=	366,417'	Y=	366,031'
LAT.	32.006270° N	LAT.	32.005207° N
LONG.	103.807214° W	LONG.	103.807233° W

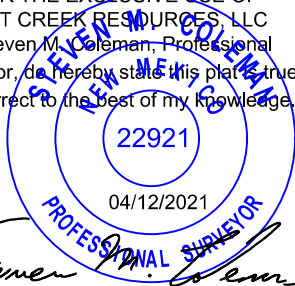
PROPOSED PAD		
COURSE	BEARING	DISTANCE
P1	N 89° 42' 47" E	400.00'
P2	S 00° 19' 09" E	550.00'
P3	S 89° 42' 47" W	400.00'
P4	N 00° 19' 09" W	550.00'

① PHANTOM BANK 31 FED COM NO. 506H WELL	
X=	663,106'
Y=	365,773'
LAT.	32.004532° N
LONG.	103.807153° W
X=	704,293'
Y=	365,830'
LAT.	32.004657° N
LONG.	103.807627° W
ELEV.	+3,135' NAVD88
CALLS	550' FNL / 400' FWL

② PHANTOM BANK 31 FED COM NO. 502 WELL	
X=	663,106'
Y=	365,723'
LAT.	32.004395° N
LONG.	103.807152° W
X=	704,293'
Y=	365,780'
LAT.	32.004520° N
LONG.	103.807626° W
ELEV.	+3,130' NAVD88
CALLS	600' FNL / 400' FWL

PROPOSED ACCESS ROAD		
COURSE	BEARING	DISTANCE
A1	S 00° 35' 32" W	386.52'

FOR THE EXCLUSIVE USE OF
FLAT CREEK RESOURCES, LLC
I, Steven M. Coleman, Professional
Surveyor, do hereby state this plat is true
and correct to the best of my knowledge.



Steven M. Coleman
Registration No. 22921

DISCLAIMER: At this time, C. H. Fenstermaker & Associates, L.L.C. has not performed nor was asked to perform any type of engineering, hydrological modeling, flood plain, or "No Rise" certification analyses, including but not limited to determining whether the project will impact flood hazards in connection with federal/FEMA, state, and/or local laws, ordinances and regulations. Accordingly, Fenstermaker makes no warranty or representation of any kind as to the foregoing issues, and persons or entities using this information shall do so at their own risk.

NOTE:

Please be advised, that while reasonable efforts are made to locate and verify pipelines and anomalies using our standard pipeline locating equipment, it is impossible to be 100 % effective. As such, we advise using caution when performing work as there is a possibility that pipelines and other hazards, such as fiber optic cables, PVC pipelines, etc. may exist undetected on site.

NOTE:

Many states maintain information centers that establish links between those who dig (excavators) and those who own and operate underground facilities (operators). It is advisable and in most states, law, for the contractor to contact the center for assistance in locating and marking underground utilities. For guidance, New Mexico One Call www.nm811.org.

SURFACE USE PLAT

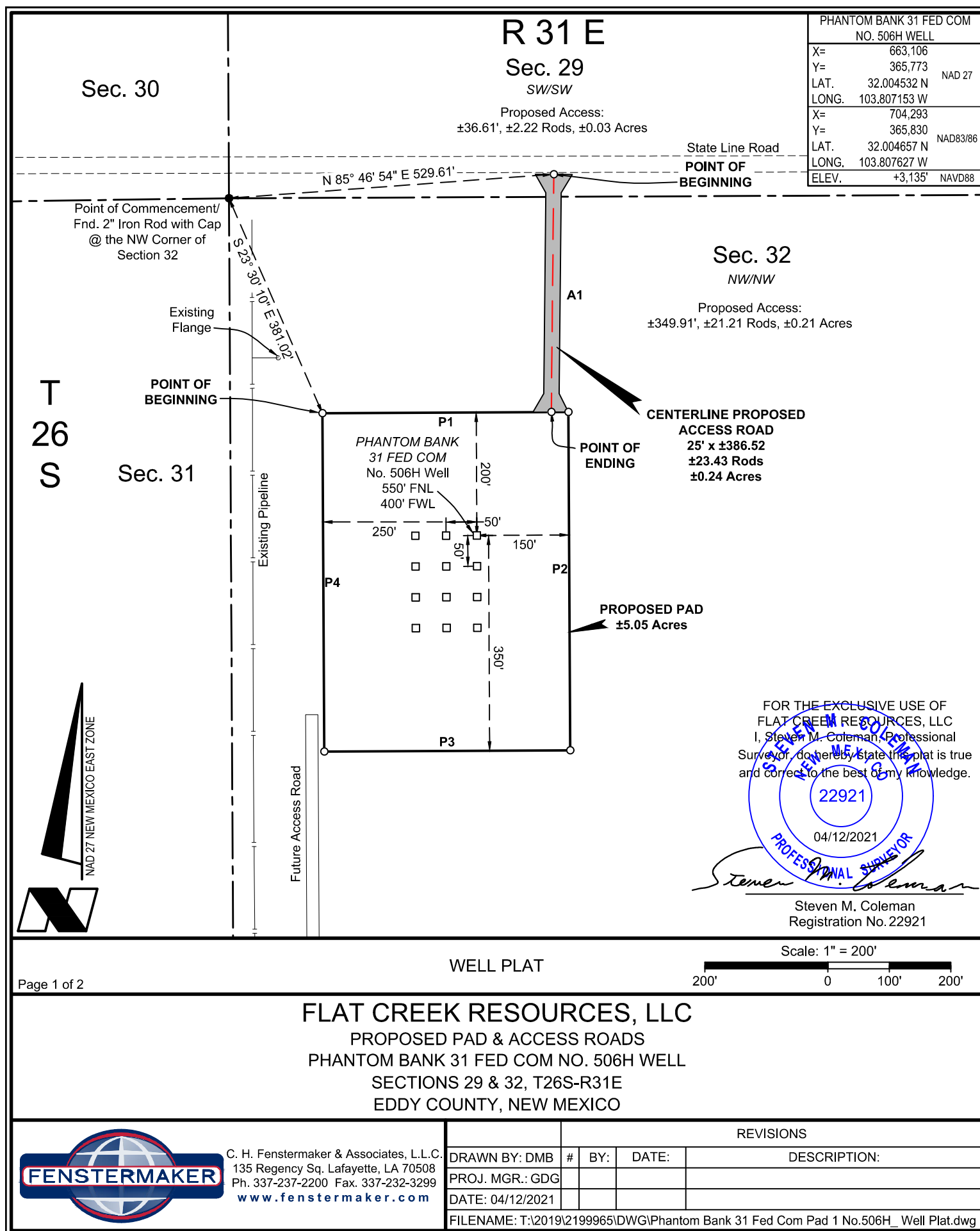
Page 2 of 2

FLAT CREEK RESOURCES, LLC
PROPOSED PAD & ACCESS ROADS
PHANTOM BANK 31 FED COM NORTH PAD
SECTIONS 29 & 32, T26S-R31E
EDDY COUNTY, NEW MEXICO



C. H. Fenstermaker & Associates, L.L.C.
135 Regency Sq. Lafayette, LA 70508
Ph. 337-237-2200 Fax. 337-232-3299
www.fenstermaker.com

REVISIONS				
DRAWN BY:	#	BY:	DATE:	DESCRIPTION:
PROJ. MGR.: GDG	1	DMB	04/06/2021	Revise access and wells
DATE: 09/05/2019				
FILENAME: T:\2019\2199965\DWG\Phantom Bank 31 Fed Com Pad 1 SUP_New.dwg				



NW PAD CORNER		NE PAD CORNER	
X=	662,855	X=	663,255
Y=	365,972	Y=	365,974
LAT.	32.005082 N	LAT.	32.005082 N
LONG.	103.807960 W	LONG.	103.806669 W
NAD 27		NAD 27	
X=	704,042	X=	704,442
Y=	366,029	Y=	366,031
LAT.	32.005207 N	LAT.	32.005207 N
LONG.	103.808434 W	LONG.	103.807143 W
NAD83/86		NAD83/86	
ELEV.	+3,129' NAVD88	ELEV.	+3,135' NAVD88
SW PAD CORNER		SE PAD CORNER	
X=	662,858	X=	663,258
Y=	365,422	Y=	365,424
LAT.	32.003570 N	LAT.	32.003570 N
LONG.	103.807958 W	LONG.	103.806668 W
NAD 27		NAD 27	
X=	704,045	X=	704,445
Y=	365,479	Y=	365,481
LAT.	32.003695 N	LAT.	32.003695 N
LONG.	103.808432 W	LONG.	103.807142 W
NAD83/86		NAD83/86	
ELEV.	+3,120' NAVD88	ELEV.	+3,125' NAVD88

POINT OF BEGINNING ACCESS ROAD		POINT OF ENDING ACCESS ROAD	
X=	663,231'	X=	663,227'
Y=	366,360'	Y=	365,973'
LAT.	32.006144° N	LAT.	32.005082° N
LONG.	103.806740° W	LONG.	103.806759° W
NAD 27		NAD 27	
X=	704,418'	X=	704,414'
Y=	366,417'	Y=	366,031'
LAT.	32.006270° N	LAT.	32.005207° N
LONG.	103.807214° W	LONG.	103.807233° W
NAD83/86		NAD83/86	

PROPOSED ACCESS ROAD		
COURSE	BEARING	DISTANCE
A1	S 00° 35' 32" W	386.52'

PROPOSED PAD		
COURSE	BEARING	DISTANCE
P1	N 89° 42' 47" E	400.00'
P2	S 00° 19' 09" E	550.00'
P3	S 89° 42' 47" W	400.00'
P4	N 00° 19' 09" W	550.00'

DISCLAIMER: At this time, C. H. Fenstermaker & Associates, L.L.C. has not performed nor was asked to perform any type of engineering, hydrological modeling, flood plain, or "No Rise" certification analyses, including but not limited to determining whether the project will impact flood hazards in connection with federal/FEMA, state, and/or local laws, ordinances and regulations. Accordingly, Fenstermaker makes no warranty or representation of any kind as to the foregoing issues, and persons or entities using this information shall do so at their own risk.

NOTE:

Please be advised, that while reasonable efforts are made to locate and verify pipelines and anomalies using our standard pipeline locating equipment, it is impossible to be 100 % effective. As such, we advise using caution when performing work as there is a possibility that pipelines and other hazards, such as fiber optic cables, PVC pipelines, etc. may exist undetected on site.

NOTE:

Many states maintain information centers that establish links between those who dig (excavators) and those who own and operate underground facilities (operators). It is advisable and in most states, law, for the contractor to contact the center for assistance in locating and marking underground utilities. For guidance, New Mexico One Call www.nm811.org.

FOR THE EXCLUSIVE USE OF
FLAT CREEK RESOURCES, LLC
I, Steven M. Coleman, Professional
Surveyor, do hereby state this plat is true
and correct to the best of my knowledge.

22921

04/12/2021

PROFESSIONAL SURVEYOR

Steven M. Coleman

Steven M. Coleman
Registration No. 22921

WELL PLAT

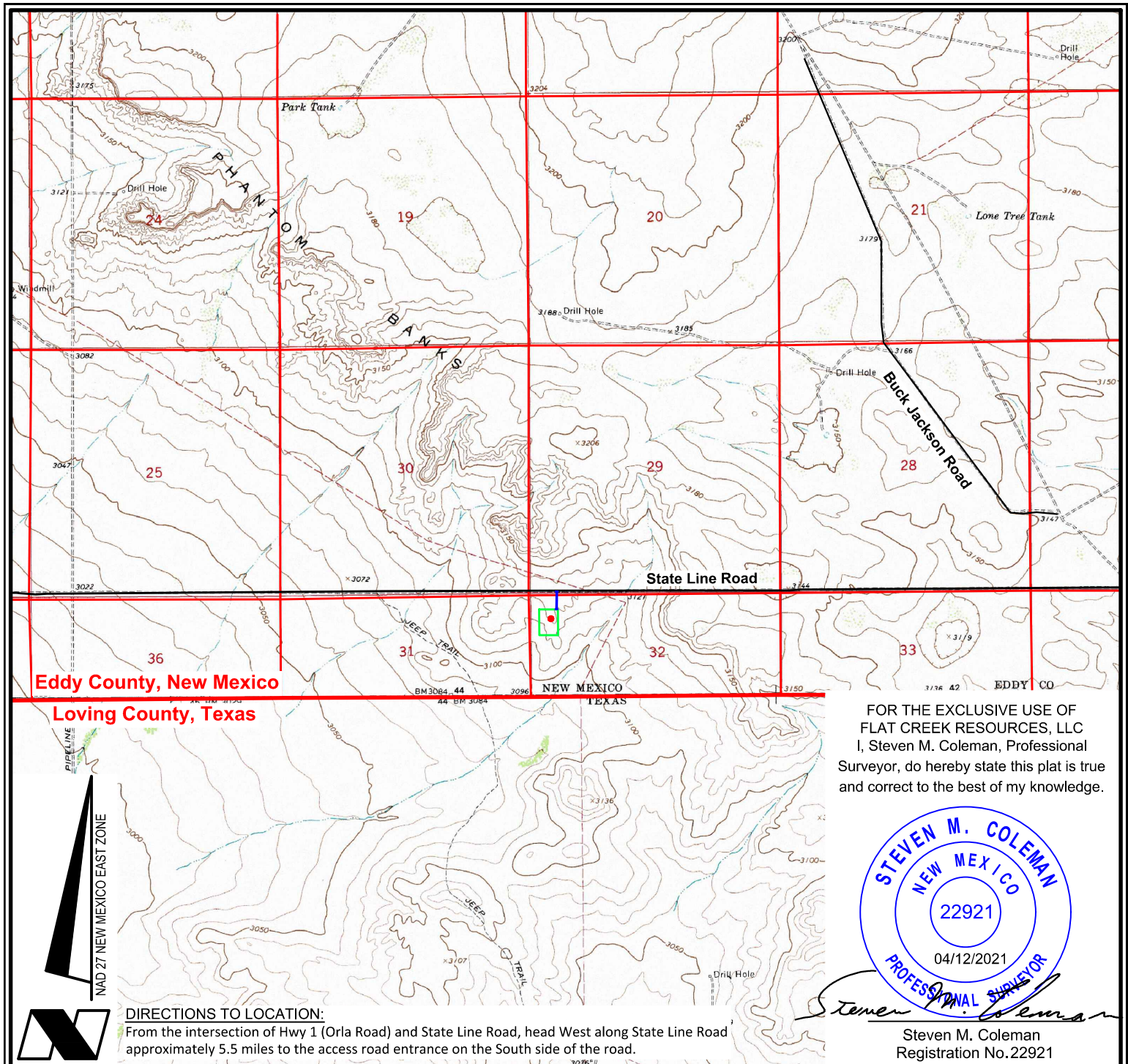
Page 2 of 2

FLAT CREEK RESOURCES, LLC
PROPOSED PAD & ACCESS ROADS
PHANTOM BANK 31 FED COM NO. 506H WELL
SECTIONS 29 & 32, T26S-R31E
EDDY COUNTY, NEW MEXICO



C. H. Fenstermaker & Associates, L.L.C.
135 Regency Sq. Lafayette, LA 70508
Ph. 337-237-2200 Fax. 337-232-3299
www.fenstermaker.com

REVISIONS				
DRAWN BY:	#	BY:	DATE:	DESCRIPTION:
PROJ. MGR.: GDG				
DATE: 04/12/2021				
FILENAME: T:\2019\2199965\DWG\Phantom Bank 31 Fed Com Pad 1 No.506H_ Well Plat.dwg				



ROAD PLAT

Scale: 1" = 3000'

3000' 0 1500' 3000'

LEGEND

- Proposed Well
- Proposed Access Road
- Proposed Drillsite
- Existing Road
- Section Line
- Township & Range

FLAT CREEK RESOURCES, LLC
PHANTOM BANK 31 FED COM NO. 506H WELL
LOCATED 550' FNL AND 400' FWL
SECTION 32, T26S-R31E
EDDY COUNTY, NEW MEXICO



C. H. Fenstermaker & Associates, L.L.C.
 135 Regency Sq. Lafayette, LA 70508
 Ph. 337-237-2200 Fax. 337-232-3299
www.fenstermaker.com

REVISIONS

DRAWN BY: DMB	#	BY:	DATE:	DESCRIPTION:
PROJ. MGR.: GDG				
DATE: 04/12/2021				
FILENAME: T:\2019\2199965\DWG\Phantom Bank 31 Fed Com Pad 1 No.506H_Road Plat.dwg				

District I
1625 N. French Dr., Hobbs, NM 88240
Phone: (505) 393-6161 Fax: (575) 393-0720

District II
811 S. First St., Artesia, NM 88210
Phone: (575) 748-1283 Fax: (575) 748-9720

District III
1000 Rio Brazos Road, Aztec, NM 87410
Phone: (505) 334-6178 Fax: (505) 334-6170

District IV
1220 S. St. Francis Dr., Santa Fe, NM 87505
Phone: (505) 476-3460 Fax: (505) 476-3462

State of New Mexico
Energy, Minerals & Natural Resources Department
OIL CONSERVATION DIVISION
1220 South St. Francis Dr.
Santa Fe, NM 87505

Form C-102
Revised August 1, 2011
Submit one copy to appropriate
District Office

☐ AMENDED REPORT

WELL LOCATION AND ACREAGE DEDICATION PLAT

¹ API Number		² Pool Code 97814	³ Pool Name PURPLE SAGE: WOLFCAMP
⁴ Property Code	⁵ Property Name PHANTOM BANK 31 FED COM		⁶ Well Number 506H
⁷ OGRID No.	⁸ Operator Name FLAT CREEK RESOURCES, LLC		⁹ Elevation 3135'

¹⁰ Surface Location

UL or lot no.	Section	Township	Range	Lot Idn	Feet from the	North/South line	Feet from the	East/West line	County
D	32	26 SOUTH	31 EAST, N.M.P.M.		550'	NORTH	400'	WEST	EDDY

¹¹ Bottom Hole Location If Different From Surface

UL or lot no.	Section	Township	Range	Lot Idn	Feet from the	North/South line	Feet from the	East/West line	County
L1	31	26 SOUTH	31 EAST, N.M.P.M.		330'	NORTH	100'	WEST	EDDY

¹² Dedicated Acres	¹³ Joint or Infill	¹⁴ Consolidation Code	¹⁵ Order No.
264.48			

No allowable will be assigned to this completion until all interests have been consolidated or a non-standard unit has been approved by the division.

16

PROPOSED LAST TAKE POINT		
X=	657,702'	NAD 27
Y=	365,920'	
LAT.	32.005007° N	
LONG.	103.824584° W	
X=	698,889'	NAD83/86
Y=	365,977'	
LAT.	32.005132° N	
LONG.	103.825059° W	

CORNER COORDINATES
TABLE (NAD 27)

A - Y=366245.06, X=657370.11
 B - Y=366283.60, X=660040.51
 C - Y=366321.04, X=662703.16
 D - Y=366332.89, X=665368.25
 E - Y=364109.66, X=657381.51
 F - Y=364123.23, X=660052.17
 G - Y=364137.17, X=662715.32

PROPOSED BOTTOM HOLE LOCATION		
X=	657,472'	NAD 27
Y=	365,916'	
LAT.	32.005001° N	
LONG.	103.825326° W	
X=	698,659'	NAD83/86
Y=	365,974'	
LAT.	32.005126° N	
LONG.	103.825801° W	

PROPOSED FIRST TAKE POINT		
X=	662,375'	NAD 27
Y=	365,986'	
LAT.	32.005129° N	
LONG.	103.809508° W	
X=	703,562'	NAD83/86
Y=	366,044'	
LAT.	32.005254° N	
LONG.	103.809982° W	

PHANTOM BANK 31 FED COM NO. 506H WELL		
X=	663,106'	NAD 27
Y=	365,773'	
LAT.	32.004532° N	
LONG.	103.807153° W	
X=	704,293'	NAD83/86
Y=	365,830'	
LAT.	32.004657° N	
LONG.	103.807627° W	
ELEV.	+3135'	NAVD88

17 OPERATOR CERTIFICATION

I hereby certify that the information contained herein is true and complete to the best of my knowledge and belief, and that this organization either owns a working interest or unleased mineral interest in the land including the proposed bottom hole location or has a right to drill this well at this location pursuant to a contract with an owner of such a mineral or working interest, or to a voluntary pooling agreement or a compulsory pooling order heretofore entered by the division.

Rodney Littleton

04/13/2021

Signature

Date

Rodney Littleton

Printed Name

rodney.littleton@flatcreekresources.com

E-mail Address

18 SURVEYOR CERTIFICATION

I hereby certify that the well location shown on this plat was plotted from field notes of actual surveys made by me or under my supervision, and that the same is true and correct to the best of my belief.

02/26/2019

Date of Survey

Signature and Seal of Professional Surveyor:

Certificate Number

Flat Creek

Submitted by:

Cesar Acosta

cacosta@compasswellservices.com

432-561-5970

3/12/2021



Prepared for:

Mr. Robert Brosig

Consulting Engineer

FLAT CREEK - EDDY COUNTY GENERIC WELL - SURFACE

Flat Creek - Eddy County Generic Well - Surface

WELL BORE DETAILS

Hole Size

Size	Depth (ft)	
14 3/4	1000	TMD
	1000	TVD

Previous Casing

Size	Depth (ft)	Grade	Weight
20	120		

Casing

Size	Depth (ft)	Grade	Weight	Thread
10 3/4	1000		45.5	

Formation

Mud Weight/Type	BH Temp	
8.4 ppg FW	87 °F	BHST
	81 °F	BHCT



Flat Creek - Eddy County Generic Well - Surface

JOB AND FLUID DETAILS

Job Details

Pump 40 bbls of fresh water Spacer

Mix and pump 450 sks of Lead slurry mixed @ 13.5 ppg, yielding 787.5 ft³ (140.2 bbls)

Mix and pump 250 sks of Tail slurry mixed @ 14.8 ppg, yielding 335 ft³ (59.6 bbls)

Displace Top Wiper plug with approximately 92.3 bbls of water (actual volume determined on location)

Slurry Properties	Yield	Density	Mix Water
Lead Cement	1.74	13.5	8.83
Tail Cement	1.34	14.8	6.35

Lead Cement Slurry - 450 sks (93% Excess) TOC Surface

100 Class C Premium	
Premium Gel (Bentonite)	2.00 %
C-51 Suspension Agent	0.05 %
Kol Seal	5.00 #/sk
C-503P Defoamer	0.30 %
Calcium Chloride	0.50 %

Tail Cement Slurry - 250 sks (85% Excess) TOC 700

100 Class C Premium	
C-45 Econolite	0.10 %
Calcium Chloride	1.00 %

550

Subtotal for Pumping & Equipment Charges				\$14,184.00		\$3,405.20
Class C Premium	700	\$35.92	sacks	\$25,144.00	24.00%	\$6,034.00
Premium Gel (Bentonite)	846	\$0.98	lb	\$829.08		\$203.04
Kol Seal	2,250	\$0.97	lb	\$2,182.50	24.00%	\$517.50
C-503P Defoamer	127	\$5.93	lb	\$753.11		\$180.34
C-45 Econolite	24	\$3.34	lb	\$80.16	24.00%	\$19.20
C-51 Suspension Agent	22	\$38.04	lb	\$836.88		\$200.86
Calcium Chloride	447	\$2.11	lb	\$943.17	24.00%	\$227.97
					24.00%	
					24.00%	
					24.00%	
					24.00%	
					24.00%	
					24.00%	
					24.00%	
C-503L Defoamer	-	\$120.42	gal	\$0.00	24.00%	\$0.00
Sugar	-	\$4.20	lb	\$0.00	0.00%	\$0.00
Materials Handling	765	\$3.75	CF	\$2,868.75	24.00%	\$688.50
Drayage	35,000	\$0.09	sacks x miles	\$3,150.00		\$756.00
Subtotal for Materials Charges				\$36,787.65		\$8,827.41
Gross Price Subtotal						\$50,971.65
Discount					76.0%	(\$38,739.04)
Pre-tax Total						\$12,232.61

Flat Creek

Submitted by:
Jonathan Croitz
432-561-5970
4/8/2021

Prepared for:
Mr. Robert Brosig
Consulting Engineer



FLAT CREEK - EDDY COUNTY GENERIC WELL - INTERMEDIATE - VERSION 2

REVISED FOR INCREASED EXCESS

WELL BORE DETAILS

Hole Size

Size	Depth (ft)	
9 7/8	1000 - 10500	TMD
	10500	TVD

Previous Casing

Size	Depth (ft)	Grade	Weight
10 3/4	1000		40.5

Casing

Size	Depth (ft)	Grade	Weight	Thread
7 5/8	0 - 10500	HCP-110	29.7	

Formation

Mud Weight/Type	BH Temp	
9 ppg Brine	157 °F	BHST
	123 °F	BHCT

JOB AND FLUID DETAILS

Job Details

Pump 20 bbls of fresh water

Pump 20 bbls of gel spacer

Mix and pump 560 sks of Primary slurry mixed @ 13.5 ppg, yielding 851.2 ft³ (151.6 bbls)

Displace Top Wiper plug with approximately 477.8 bbls of water (actual fluid type and volume determined on location)

Check floats. Wait on cement +/- 2 hrs before starting bradenhead squeeze.

Tie into bradenhead valve.

Pump 20 bbls of gel spacer

Pump 840 gal of Sodium Silicate 102

Pump 20 bbls of fresh water spacer

Mix and pump 1600 sks of Bradenhead Cement mixed @ 14.8 ppg, yielding 2128 ft³ (379 bbls) (calculated cement volume equals the annular volume from 7,550' back to surface, plus 25%)

Displace with 2 bbls of water.

Shut-in backside and wash truck to the pit.

Slurry Properties	Yield	Density	Mix Water
Primary Cement	1.52	13.5	7.78
Bradenhead Cement	1.33	14.8	6.33

Primary Cement Slurry - 560 sks (30% Excess) TOC 7550

100 HSLD 100 Cement	
C-51 Suspension Agent	0.10 %
C-45 Econolite	0.10 %
STE	4.00 %
Citric Acid	0.15 %
CFL-1	0.20 %

Bradenhead Cement Slurry - 1600 sks (25% Excess) TOC Surface

100 Class C Premium

COST ESTIMATE

Description	Quantity	Units	Gross Amount	Net Amount
Pump Charge 10001' to 11000'	1	\$8,315.00 each	\$8,315.00	\$2,078.75
Pump Charge - Additional Hours	-	\$1,700.00 hour	\$0.00	\$0.00
Reserve Pump Truck	1	\$9,640.00 each	\$9,640.00	\$2,410.00
Reserve Pump Truck after 10 hrs	-	\$1,700.00 hour	\$0.00	\$0.00
HV Mileage	200	\$11.40 mile	\$2,280.00	\$570.00
LV Mileage	200	\$6.74 mile	\$1,348.00	\$338.00
Field Storage Bin delivery	200	\$11.40 mile	\$2,280.00	\$570.00
Field Storage Bin - 3 Days	2	\$1,700.00 each	\$3,400.00	\$850.00
Cementing Head Rental	1	\$2,500.00 each	\$2,500.00	\$625.00
Top Rubber Plug: 9 5/8"	-	\$410.00 each	\$0.00	\$0.00
Data Acquisition	1	\$1,130.00 each	\$1,130.00	\$282.50
Thickening Time Test, Field Blend	1	\$2,180.00 each	\$2,180.00	\$545.00
Centrifugal Pump		\$1,130.00 each	\$0.00	\$0.00
Circulating Equipment		\$6,000.00 each	\$0.00	\$0.00
Derrick Charge		\$1,000.00 each	\$0.00	\$0.00
Citric Acid	4	\$14.06 lb	\$56.24	\$14.08
C-51 Suspension Agent	80	\$38.04 lb	\$3,043.20	\$760.80
Soda Ash - PH Buffer	100	\$1.50 lb	\$150.00	\$38.00
Subtotal for Pumping & Equipment Charges			\$36,322.44	\$9,082.13
Class C Premium	1,600	\$40.00 sacks	\$64,000.00	\$16,000.00
HSLD 100 Cement	560	\$46.68 sacks	\$26,140.80	\$6,535.20
Citric Acid	71	\$14.06 lb	\$998.26	\$249.92
CFL-1	95	\$63.70 lb	\$6,051.50	\$1,513.35
C-45 Econolite	48	\$3.52 lb	\$168.96	\$42.24
C-51 Suspension Agent	48	\$38.04 lb	\$1,825.92	\$456.48
STE	1,893	\$1.29 lb	\$2,441.97	\$605.76
Sodium Silicate 102	840	\$10.42 gal	\$8,752.80	\$2,192.40
C-503L Defoamer	-	\$120.42 gal	\$0.00	\$0.00
Sugar	-	\$4.20 lb	\$0.00	\$0.00
Materials Handling	2,196	\$3.75 CF	\$8,235.00	\$2,058.75
Drayage	216,000	\$0.09 sacks x miles	\$19,440.00	\$4,860.00
Subtotal for Materials Charges			\$138,055.21	\$34,514.10
Gross Price Subtotal				\$174,377.65
Discount			75.0%	(\$130,781.42)
Pre-tax Total				\$43,596.23

Flat Creek

Submitted by:
Cesar Acosta
cacosta@compasswellservices.com
432-561-5970
3/11/2021

Prepared for:
Mr. Robert Brosig
Drilling Manager



EDDY COUNTY GENERIC WELL - PRODUCTION

Eddy County Generic Well - Production

Page 2

WELL BORE DETAILS

Hole Size

Size	Depth (ft)	
6 3/4	16,500	TMD
	11,100	TVD
	10600	KOP

Previous Casing

Size	Depth (ft)	Grade	Weight
9 7/8	10500	HCP-110	20

Casing

Size	Depth (ft)	Grade	Weight	Thread
5 1/2	0-10,400	HCP-110	20	USF
5	10,400-16,500	HCP-110	18	DWC

Tubing

Size	Depth (ft)	Grade	Weight
------	------------	-------	--------

Formation

Mud Weight/Type	BH Temp	
12.5 ppg OBM	161°F	BHST
	158°F	BHCT

Eddy County Generic Well - Production

JOB AND FLUID DETAILS

Job Details

Mix and pump weighed spacer w/ surfactants at 13.5 ppg (based on final mud density)

Mix and pump 665 sks of Primary slurry mixed @ 14.2 ppg, yielding 837.0 ft³ (149.2 bbls) 5-8 bpm

Displace Top Wiper plug with approximately 292.3 bbls of water (actual volume determined on location) 5-8 bpm

Land plug, pressure 500 psi over landing pressure, check floats. (final pressure determined on location)

Slurry Properties	Yield	Density	Mix Water
Primary Cement	1.26	14.2	5.95

Primary Cement Slurry - 665 sks (10% Excess) TOC 10000

50:50 Class H Premium:Compass Poz-Mix

Citric Acid	0.05 %
CSA-1000 - Fluid Loss Additive	0.05 %
C-49 Expanding Gas Flow Con	0.20 %



Eddy County Generic Well - Production

COST ESTIMATE

Description	Quantity		Units	Gross Amount	Net Amount
Pump Charge 16001' to 17000'	1	\$25,955.00	each	\$25,955.00	\$5,710.10
Pump Charge - Additional Hours	-	\$1,700.00	hour	\$0.00	\$0.00
Reserve Pump Truck	1	\$9,640.00	each	\$9,640.00	\$2,120.80
Reserve Pump Truck after 10 hrs	-	\$1,700.00	hour	\$0.00	\$0.00
Batch Mixer - First 10 hours	1	\$4,920.00	each	\$4,920.00	\$1,082.40
Batch Mixer - Additional hours	-	\$720.00	hour	\$0.00	\$0.00
HV Mileage	300	\$11.40	mile	\$3,420.00	\$753.00
LV Mileage	100	\$6.74	mile	\$674.00	\$148.00
Field Storage Bin delivery	100	\$11.40	mile	\$1,140.00	\$251.00
Field Storage Bin - 3 Days	1	\$1,700.00	each	\$1,700.00	\$374.00
Cementing Head Rental	1	\$2,500.00	each	\$2,500.00	\$550.00
Data Acquisition	1	\$1,130.00	each	\$1,130.00	\$248.60
Thickening Time Test, Field Blend	1	\$2,180.00	each	\$2,180.00	\$479.60
Centrifugal Pump	-	\$1,130.00	each	\$0.00	\$0.00
Circulating Equipment	-	\$6,000.00	each	\$0.00	\$0.00
Derrick Charge	-	\$1,000.00	each	\$0.00	\$0.00
Barite	131	\$70.56	sack	\$9,243.36	\$2,033.12
CSG-1	40	\$98.79	lb	\$3,951.60	\$869.20
Plexaid - 803	50	\$58.56	gal	\$2,928.00	\$644.00
Plexaid - 840 Surfactant	25	\$169.54	gal	\$4,238.50	\$932.50
Subtotal for Pumping & Equipment Charges				\$73,620.46	\$16,196.32
Class H Premium	333	\$35.92	sacks	\$11,961.36	\$2,630.70
Compass Poz-Mix	333	\$20.30	sacks	\$6,759.90	\$1,488.51
Citric Acid	28	\$13.94	lb	\$390.32	\$85.96
CSA-1000 - Fluid Loss Additive	28	\$60.48	Lb	\$1,693.44	\$372.68
C-49 Expanding Gas Flow Control	112	\$45.35	lb	\$5,079.20	\$1,117.76
C-503L Defoamer	-	\$120.42	gal	\$0.00	\$0.00
Sugar	-	\$4.20	lb	\$0.00	\$0.00
Materials Handling	669	\$3.75	CF	\$2,508.75	\$551.93
Drayage	46,400	\$0.09	sacks x miles	\$4,176.00	\$918.72
Subtotal for Materials Charges				\$32,568.97	\$7,166.26
Gross Price Subtotal					\$106,189.43
Discount				78.0%	(\$82,826.86)
Pre-tax Total					\$23,362.58



ULTRA™ DQX



Coupling	Pipe Body
Grade: P110	Grade: P110
Body: White	1st Band: White
1st Band: -	2nd Band: -
2nd Band: -	3rd Band: -
3rd Band: -	4th Band: -
	5th Band: -
	6th Band: -

Outside Diameter	5.000 in.	Wall Thickness	0.362 in.	Grade	P110
Min. Wall Thickness	87.50 %	Drift	API Standard	Type	Casing
Connection OD Option	REGULAR				

Pipe Body Data

Geometry				Performance	
Nominal OD	5.000 in.	Wall Thickness	0.362 in.	Body Yield Strength	580 x1000 lb
Nominal Weight	18 lb/ft	Plain End Weight	17.95 lb/ft	Min. Internal Yield Pressure	13,940 psi
Drift	4.151 in.	OD Tolerance	API	SMYS	110,000 psi
Set Drift	4.151 in.			Collapse Pressure	13,470 psi
Nominal ID	4.276 in.				

Connection Data

Geometry		Performance		Make-Up Torques	
Connection OD	5.800 in.	Tension Efficiency	100 %	Minimum	9800 ft-lb
Coupling Length	8.194 in.	Joint Yield Strength	580 x1000 lb	Optimum	10,900 ft-lb
Connection ID	4.276 in.	Internal Pressure Capacity	13,940 psi	Maximum	12,000 ft-lb
Make-up Loss	4.097 in.	Compression Efficiency	100 %	Operation Limit Torques	
Threads per inch	5	Compression Strength	580 x1000 lb	Operating Torque	14,900 ft-lb
Connection OD Option	Regular	Max. Allowable Bending	101 °/100 ft	Yield Torque	17,500 ft-lb

Notes

For the latest performance data, always visit our website: www.tenaris.com

Tenaris has issued this document for general information only, and the information in this document, including, without limitation, any pictures, drawings or designs ("Information") is not intended to constitute professional or any other type of advice or recommendation and is provided on an "as is" basis. No warranty is given. Tenaris has not independently verified any information –if any- provided by the user in connection with, or for the purpose of, the Information contained hereunder. The use of the Information is at user's own risk and Tenaris does not assume any responsibility or liability of any kind for any loss, damage or injury resulting from, or in connection with any Information contained hereunder or any use thereof. The Information in this document is subject to change or modification without notice. Tenaris's products and services are subject to Tenaris's standard terms and conditions or otherwise to the terms resulting from the respective contracts of sale or services, as the case may be, between petitioner and Tenaris. For more complete information please contact a Tenaris's representative or visit our website at www.tenaris.com . ©Tenaris 2021. All rights reserved.



U. S. Steel Tubular Products

5.500 20.00 (0.361)

USS RYS110

USS-TALON HTQ™

RD5.900



	Pipe	Connection		
MECHANICAL PROPERTIES				
Minimum Yield Strength	110,000		psi	[6]
Maximum Yield Strength	125,000		psi	[6]
Minimum Tensile Strength	120,000		psi	[6]
DIMENSIONS				
Outside Diameter	5.500	5.900	in.	
Wall Thickness	0.361		in.	
Inside Diameter	4.778	4.778	in.	
Drift - API	4.653		in.	
Nominal Linear Weight, T&C	20.00		lb/ft	
Plain End Weight	19.83	19.83	lb/ft	
SECTION AREA				
Cross Sectional Area Critical Area	5.828	5.828	sq. in.	
Joint Efficiency		100.0	%	[2]
PERFORMANCE				
Minimum Collapse Pressure	11,100	11,100	psi	
Minimum Internal Yield Pressure	12,640	12,640	psi	
Minimum Pipe Body Yield Strength	641,000		lb	
API Joint Strength		641,000	lb	
Compression Rating		641,000	lb	
Reference Length		21,370	ft	[5]
Maximum Uniaxial Bend Rating		91.7	deg/100 ft	[3]
MAKE-UP DATA				
Minimum Make-Up Torque		17,000	ft-lb	[4]
Maximum Make-Up Torque		20,000	ft-lb	[4]
Maximum Operating Torque		39,500	ft-lb	[4]
Make-Up Loss		5.58	in.	

UNCONTROLLED

- Notes: 1) Other than proprietary collapse and connection values, performance properties have been calculated using standard equations defined by API 5C3 and do not incorporate any additional design or safety factors. Calculations assume nominal pipe OD, nominal wall thickness, and Specified Minimum Yield Strength (SMYS).
- 2) Joint Efficiencies are calculated by dividing the connection critical area by the pipe body area.
- 3) Uniaxial bend rating shown is structural only.
- 4) Torques have been calculated assuming a thread compound friction factor of 1.0 and are recommended only. Field make-up torques may require adjustment based on actual field conditions (e.g. make-up speed, temperature, thread compound, etc.).
- 5) Reference length is calculated by joint strength divided by Nominal Linear Weight, T&C with 1.5 safety factor.
- 6) Coupling must meet minimum mechanical properties of the pipe.

UNCONTROLLED

Legal Notice: USS-TALON HTQ™ (High Torque Casing Drilling Connection) is a trademark of U. S. Steel Corporation. All material contained in this publication is for general information only. This material should not therefore be used or relied upon for any specific application without independent competent professional examination and verification of accuracy, suitability, and applicability. Anyone making use of this material does so at their own risk and assumes any and all liability resulting from such use. U. S. Steel disclaims any and all expressed or implied warranties of fitness for a ny general or particular application.

USS Product Data Sheet 2021 - PE Design Sheet

Phantom Bank 31 Fed Com

Well: 506H

Casing Design Data

Surface

Top Setting Depth MD	0
Top Setting Depth TVD	0
Top Setting Depth MSL	3116
Bottom Setting Depth MD	1150
Bottom Setting Depth TVD	1150
Bottom Setting Depth MSL	1966
Calculated Casing Length MD	1150
Size	10.75
Grade	J-55
Weight	54.5
Joint	STC
Condition (new or used)	New
Standard (API, Non-API)	API
Tapered (Yes, No)	No
Collapse Design Safety Factor	3.9
Burst Design Safety Factor	6.7
Body Tensile Design Safety Factor type (Dry or Buoyant)	Dry
Body Tensile Design Safety Factor type	13.7
Joint Tensile Design Safety Factor type (Dry or Buoyant)	Dry
Joint Tensile Design Safety Factor type	15.2

Intermediate 1	Intermediate 2 or Liner	Production or Liner	Production 2
0	None	0	10400
0		0	10400
3116		3116	-7284
10500		10400	16473
10500		10400	10980
-7384		-7284	13357
10500		10400	6073
7.625		5.5	5.0
HCL-80		RYS-110	P-110
29.7		20	18
Butt		Talon	DQX
New		New	New
API		API	API
No		Yes	Yes
1.3		1.9	2.1
1.3		2.1	2.2
Dry		Dry	
2.2		2.1	Horizontal
Dry		Dry	
2.5		2.1	Horizontal

District I

1625 N. French Dr., Hobbs, NM 88240
Phone: (575) 393-6161 Fax: (575) 393-0720

District II

811 S. First St., Artesia, NM 88210
Phone: (575) 748-1283 Fax: (575) 748-9720

District III

1000 Rio Brazos Road, Aztec, NM 87410
Phone: (505) 334-6178 Fax: (505) 334-6170

District IV

1220 S. St. Francis Dr., Santa Fe, NM 87505
Phone: (505) 476-3460 Fax: (505) 476-3462

State of New Mexico
Energy, Minerals & Natural Resources Department

OIL CONSERVATION DIVISION

1220 South St. Francis Dr.

Santa Fe, NM 87505

Form C-102

Revised August 1, 2011

Submit one copy to appropriate

District Office

☐ AMENDED REPORT

AS-DRILLED
WELL LOCATION AND ACREAGE DEDICATION PLAT

¹ API Number 30-015-47023	² Pool Code 97814	³ Pool Name PURPLE SAGE: WOLFCAMP (Gas)
⁴ Property Code 327168	⁵ Property Name PHANTOM BANK 31 FED	⁶ Well Number 506H
⁷ OGRID No. 374034	⁸ Operator Name FLAT CREEK RESOURCES, LLC	⁹ Elevation 3135'

¹⁰ Surface Location

UL or lot no.	Section	Township	Range	Lot Idn	Feet from the	North/South line	Feet from the	East/West line	County
D	32	26 SOUTH	31 EAST, N.M.P.M.		550'	NORTH	400'	WEST	EDDY

¹¹ Bottom Hole Location If Different From Surface

UL or lot no.	Section	Township	Range	Lot Idn	Feet from the	North/South line	Feet from the	East/West line	County
L1	31	26 SOUTH	31 EAST, N.M.P.M.		358'	NORTH	95'	WEST	EDDY

¹² Dedicated Acres 264.48	¹³ Joint or Infill	¹⁴ Consolidation Code	¹⁵ Order No.
---	-------------------------------	----------------------------------	-------------------------

No allowable will be assigned to this completion until all interests have been consolidated or a non-standard unit has been approved by the division.

<p>¹⁶</p> <div style="display: flex; justify-content: space-between;"> <div style="width: 30%;"> <p>FINAL BOTTOM TAKE POINT</p> <p>X= 657,702' Y= 365,895' NAD 27 LAT. 32.004940° N LONG. 103.824584° W</p> <p>X= 698,889' Y= 365,953' NAD83/86 LAT. 32.005066° N LONG. 103.825059° W</p> </div> <div style="width: 30%;"> <p>FINAL TOP TAKE POINT</p> <p>X= 662,375' Y= 365,971' NAD 27 LAT. 32.005086° N LONG. 103.809508° W</p> <p>X= 703,562' Y= 366,028' NAD83/86 LAT. 32.005212° N LONG. 103.809982° W</p> </div> <div style="width: 30%;"> <p>FINAL KICK-OFF POINT</p> <p>X= 663,065' Y= 365,949' NAD 27 LAT. 32.005018° N LONG. 103.807282° W</p> <p>X= 704,252' Y= 366,007' NAD83/86 LAT. 32.005143° N LONG. 103.807756° W</p> </div> </div> <div style="display: flex; justify-content: space-between; margin-top: 10px;"> <div style="width: 30%;"> <p>ACTUAL BOTTOM HOLE LOCATION</p> <p>X= 657,467' Y= 365,889' NAD 27 LAT. 32.004924° N LONG. 103.825341° W</p> <p>X= 698,654' Y= 365,946' NAD83/86 LAT. 32.005050° N LONG. 103.825816° W</p> </div> <div style="width: 30%;"> <p>CORNER COORDINATES TABLE (NAD 27)</p> <p>A - Y=366245.06, X=657370.11 B - Y=366283.60, X=660040.51 C - Y=366321.04, X=662703.16 D - Y=366332.89, X=665368.25 E - Y=364109.66, X=657381.51 F - Y=364123.23, X=660052.17 G - Y=364137.17, X=662715.32</p> </div> <div style="width: 30%;"> <p>PHANTOM BANK 31 FED COM NO. 506H WELL</p> <p>X= 663,106' Y= 365,773' NAD 27 LAT. 32.004532° N LONG. 103.807153° W</p> <p>X= 704,293' Y= 365,830' NAD83/86 LAT. 32.004657° N LONG. 103.807627° W ELEV. +3135' NAVD88</p> </div> </div>	<p>¹⁷ OPERATOR CERTIFICATION</p> <p>I hereby certify that the information contained herein is true and complete to the best of my knowledge and belief, and that this organization either owns a working interest or unleased mineral interest in the land including the proposed bottom hole location or has a right to drill this well at this location pursuant to a contract with an owner of such a mineral or working interest, or to a voluntary pooling agreement or a compulsory pooling order heretofore entered by the division.</p> <p><i>Rodney Littleton</i> 8/18/2023</p> <p>Signature Date</p> <p>Rodney Littleton</p> <p>Printed Name</p> <p>rodney.littleton@flatcreekresources.com</p> <p>E-mail Address</p> <p>¹⁸ SURVEYOR CERTIFICATION</p> <p>I hereby certify that the well location shown on this plat was plotted from field notes of actual surveys made by me or under my supervision, and that the same is true and correct to the best of my belief.</p> <p>04/22/2021</p> <p>Date of Survey</p> <p>Signature and Seal of Professional Surveyor:</p> <p><i>Steven M. Coleman</i></p> <p>Certificate Number 08/15/2023</p>
--	--

Actual Bottom Hole Location @ 16,485' MD

Final Bottom Take Point @ 16,250' MD 354.34' FNL, 330.00' FWL

Final Top Take Point @ 11,574' MD 345.50' FNL, 330.00' FEL

Final Kick-Off Point @ 10,524' MD 373.19' FNL, 359.96' FWL

Sec. 31 Sec. 32

EDDY COUNTY, NEW MEXICO LOVING COUNTY, TEXAS

District I
1625 N. French Dr., Hobbs, NM 88240
Phone:(575) 393-6161 Fax:(575) 393-0720
District II
811 S. First St., Artesia, NM 88210
Phone:(575) 748-1283 Fax:(575) 748-9720
District III
1000 Rio Brazos Rd., Aztec, NM 87410
Phone:(505) 334-6178 Fax:(505) 334-6170
District IV
1220 S. St Francis Dr., Santa Fe, NM 87505
Phone:(505) 476-3470 Fax:(505) 476-3462

State of New Mexico
Energy, Minerals and Natural Resources
Oil Conservation Division
1220 S. St Francis Dr.
Santa Fe, NM 87505

CONDITIONS

Action 278404

CONDITIONS

Operator: Flat Creek Resources, LLC 777 Main St. Fort Worth, TX 76102	OGRID: 374034
	Action Number: 278404
	Action Type: [C-103] NOI Change of Plans (C-103A)

CONDITIONS

Created By	Condition	Condition Date
ward.rikala	Accepted for record. Contains C102 As Drilled.	2/5/2024