

Well Name: LOCO HILLS SWD 34	Well Location: T17S / R30E / SEC 34 / SENW /	County or Parish/State: EDDY / NM
Well Number: 5	Type of Well: INJECTION - ENHANCED RECOVERY	Allottee or Tribe Name:
Lease Number: NMLC028992H	Unit or CA Name:	Unit or CA Number:
US Well Number: 3001539477	Well Status: Water Disposal Well	Operator: SPUR ENERGY PARTNERS LLC

Notice of Intent

Sundry ID: 2630256

Type of Submission: Notice of Intent

Date Sundry Submitted: 08/24/2021

Date proposed operation will begin: 08/23/2021

Type of Action: Workover Operations

Time Sundry Submitted: 12:16

Procedure Description: Spur Energy Partners LLC respectfully requests to perform workover operations to repair a leak. Attached is the procedure for your use.

Surface Disturbance

Is any additional surface disturbance proposed?: No

NOI Attachments

Procedure Description

Loco_Hills_34_5_SWD_Proposed_Operations_20211104132238.pdf

Well Number: 5

Type of Well: INJECTION - ENHANCED
RECOVERY

Allottee or Tribe Name:

Lease Number: NMLC028992H

Unit or CA Name:

Unit or CA Number:

US Well Number: 3001539477

Well Status: Water Disposal Well

Operator: SPUR ENERGY
PARTNERS LLC

Conditions of Approval

Specialist Review

Workover_or_Vertical_Deepen_COA_20211207130335.pdf

Operator Certification

I certify that the foregoing is true and correct. Title 18 U.S.C. Section 1001 and Title 43 U.S.C. Section 1212, make it a crime for any person knowingly and willfully to make to any department or agency of the United States any false, fictitious or fraudulent statements or representations as to any matter within its jurisdiction. Electronic submission of Sundry Notices through this system satisfies regulations requiring a submission of Form 3160-5 or a Sundry Notice.

Operator Electronic Signature: SARAH CHAPMAN

Signed on: NOV 04, 2021 01:22 PM

Name: SPUR ENERGY PARTNERS LLC

Title: Regulatory Directory

Street Address: 9655 KATY FREEWAY, SUITE 500

City: Houston

State: TX

Phone: (832) 930-8613

Email address: SCHAPMAN@SPUREPLLC.COM

Field Representative

Representative Name:

Street Address:

City:

State:

Zip:

Phone:

Email address:

BLM Point of Contact

BLM POC Name: Jonathon W Shepard

BLM POC Title: Petroleum Engineer

BLM POC Phone: 5752345972

BLM POC Email Address: jshepard@blm.gov

Disposition: Approved

Disposition Date: 12/07/2021

Signature: Jonathon Shepard

Loco Hills SWD 34 #5

HIT or Packer Leak

AFE - X21439

Laurel Marsh 832-646-8568


NW Shelf
Eddy County, NM
OBJECTIVES

The Loco Hills SWD 34 # 5 has TP / CP = 1820 / 1660, indicating a hole in tubing or a leaking packer.

- RIH w/ plug on slickline and test tbg to 1,000 psi
- If tubing does not test, get off O/O tool and POOH
- If tubing does test, POOH with tubing and packer
- RBIH while hydrotesting tubing to 6,000 lbs below slips
- Set packer, get off O/O tool, circulate packer fluid and test backside to 500 psi for 15 minutes

Current Tubing Detail

Tubing Strings												
Tubing Description Production Tubing							Set Depth (ftKB) 8,836.6		Run Date 6/20/2012			
Tubing Components												
Jts	Item Des	OD (in)	ID (in)	Wt (lb/ft)	Grade	Top Thread	Top Connection Type	Len (ft)	Cum Len (ft)	Top (ftKB)	Btm (ftKB)	Incl Max (°)
	KELLY BUSHING							18.00	8,836.55	0.0	18.0	
	PUP JOINT	3 1/2						20.91	8,818.55	18.0	38.9	
1	TUBING	3 1/2						8,777.37	8,797.64	38.9	8,816.3	
	CROSS OVER DOWN	3 1/2						0.50	20.27	8,816.3	8,816.8	0.82
	ON/OFF TOOL	2 7/8						1.82	19.77	8,816.8	8,818.6	0.83
	F NIPPLE	2 7/8						2.80	17.95	8,818.6	8,821.4	0.83
	PRODUCTION PACKER	7						7.45	15.15	8,821.4	8,828.9	0.85
	PUP JOINT	2 7/8						6.21	7.70	8,828.9	8,835.1	0.86
	R NIPPLE							1.01	1.49	8,835.1	8,836.1	0.86
	PUMP OUT PLUG							0.48	0.48	8,836.1	8,836.6	0.86

7x2-7/8" TYPE T-2 ON OFF TOOL. 2.31F NIPPLE, 7x2-7/8" ARROWSET 1-X PACKER

PROCEDURE

Spur Energy Partners LLC is committed to providing a safe working environment for all personnel. A safety meeting will be held prior to commencing each operation in order to define/clarify objectives, roles and responsibilities, identify all potential risk/hazards and establish a work procedure that is safe and environmentally sound. Meetings are to be documented on the reports returned to Spur Energy Partners LLC.

PERFORM SAFETY CHECKS AND SAFETY MEETING

1. Perform a safety meeting prior to rigging up **ANY** equipment on location. Discuss the job procedure and objective with all personnel on location. Document the safety meeting on the daily report sent to Spur. Make note of all potential risks/hazards, and clearly identify an emergency route and emergency vehicle. Also make note of any new or inexperienced personnel on location. Ensure proper Personal Protective Equipment (PPE) is used during the job. Minimums are hard hats, steel toes, safety glasses, H₂S monitors, and FR certified clothing as required. Designate a smoking area off location and 100' from any potential hydrocarbons.

PROCEDURE

Spur Energy Partners LLC is committed to providing a safe working environment for all personnel. A safety meeting will be held prior to commencing each operation in order to define/clarify objectives, roles and responsibilities, identify all potential risk/hazards and establish a work procedure that is safe and environmentally sound. Meetings are to be documented on the reports returned to Spur Energy Partners LLC.

PERFORM SAFETY CHECKS AND SAFETY MEETING

2. Perform a safety meeting prior to rigging up ANY equipment on location. Discuss the job procedure and objective with all personnel on location. Document the safety meeting on the daily report sent to Spur. Make note of all potential risks/hazards, and clearly identify an emergency route and emergency vehicle. Also make note of any new or inexperienced personnel on location. Ensure proper Personal Protective Equipment (PPE) is used during the job. Minimums are hard hats, steel toes, safety glasses, H₂S monitors, and FR certified clothing as required. Designate a smoking area off location and 100' from any potential hydrocarbons.

REPORTING STANDARDS

1. Communicate with the Spur Workovers group at a minimum of every 2 hrs including any critical operations.
2. Record **ALL** costs and input into WellView. If you are unable to get the cost from the vendor, use an estimate and put in the comments that it is an estimated cost.

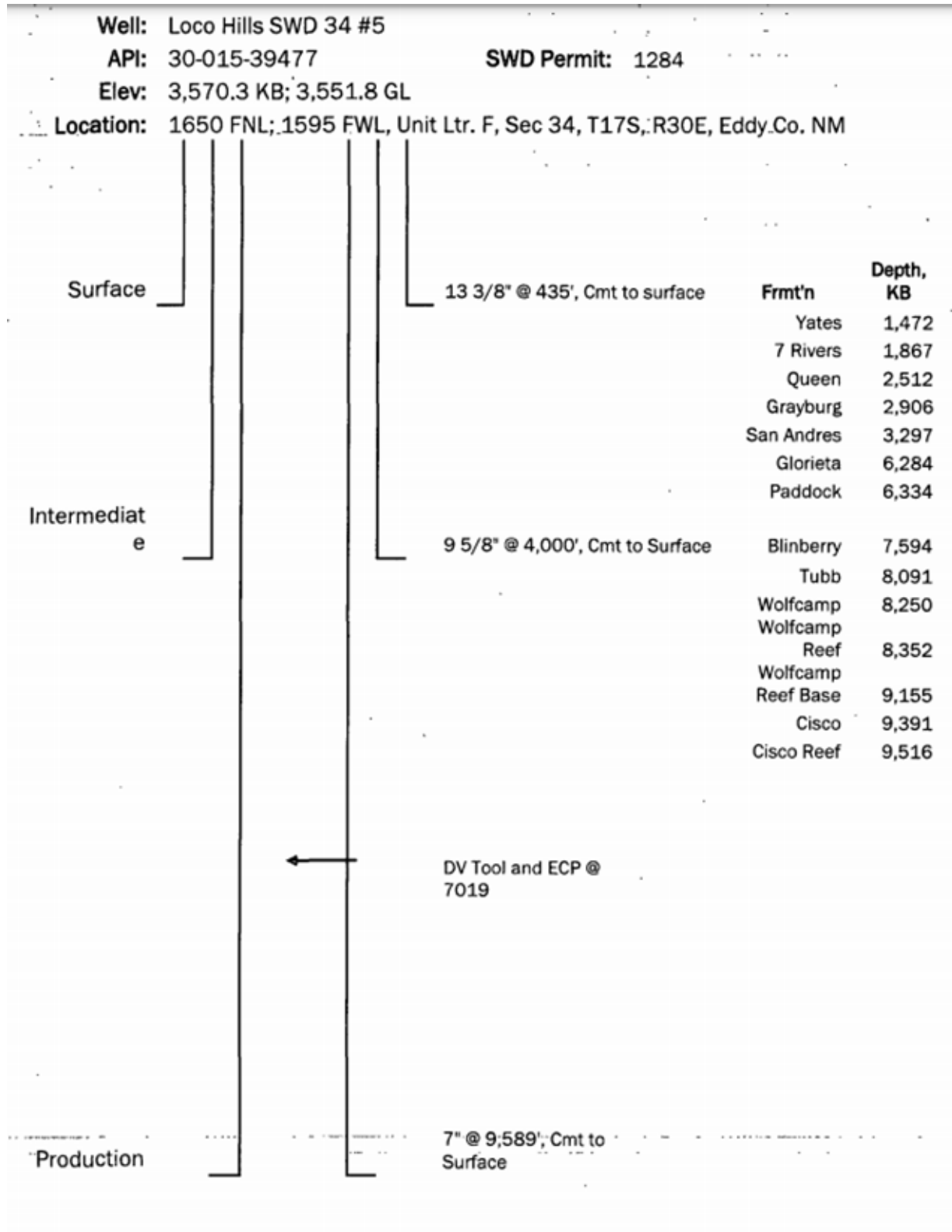
MIRU WOR AND SL Unit

1. Shut-in the well on the flowlines. Ensure that the H-Pump is shut off. Check the pressure on the tubing, production casing, & surface casing and record in WellView.
3. MIRU workover rig and kill truck.
4. Bull-head the minimum amount of **Fresh Water (8.33 ppg)** down the tubing to maintain safe control of the well.
 - a) **Treat all fluid pumped into the well with 5 gals biocide per 130 bbls fresh water.**
 - b) Ensure that the well is dead. If tubing pressures up, test the tubing to 500 psi for 5 minutes.
 - c) Record the volume of fluid pumped in WellView.
5. RIH w/ F profile nipple and set in packer profile. **2.31 F Nipple.**
6. Pressure up on the tubing to 1000 psi and note any leakoff
7. If tubing does not hold get off the O/O tool **(It is a T-2 tool but well files are unclear)**
8. If tubing holds, unset the packer and POOH

RIH w/ 3-1/2" IPC TUBING (AND PACKER IF TUBING TESTED GOOD)

9. MI 3-1/2" IPC from the BKU yard to replace bad joints as needed
10. RU 3-1/2" tubing tongs and elevators.
11. MIRU tubing testers and pressure test the tubing RIH to 6,000 psi Below Slips.
 - a) Ensure tubing is loaded with FW while testing in to maintain control of the well.
12. RIH with the tubing as shown in the **TUBING DESIGN ON PAGE 1.**

13. Set the packer at +/- 8,821'
14. Get off the O/O tool and circulate packer fluid
15. Latch back onto the O/O tool and test the backside to 500 psi for 15 Minutes
16. Inform the Foreman that the work has been completed and the well is ready to resume injection.
 - a) SWD Foreman: Hilario Jimenez - 575.703.4925
 - b) Loco Hills Foreman: Kipper Folmar - 832.470.4757
 - c) Loco Hills SWD Tech: Brian Thompson - 575.703.4565



District I
1625 N. French Dr., Hobbs, NM 88240
Phone:(575) 393-6161 Fax:(575) 393-0720
District II
811 S. First St., Artesia, NM 88210
Phone:(575) 748-1283 Fax:(575) 748-9720
District III
1000 Rio Brazos Rd., Aztec, NM 87410
Phone:(505) 334-6178 Fax:(505) 334-6170
District IV
1220 S. St Francis Dr., Santa Fe, NM 87505
Phone:(505) 476-3470 Fax:(505) 476-3462

State of New Mexico
Energy, Minerals and Natural Resources
Oil Conservation Division
1220 S. St Francis Dr.
Santa Fe, NM 87505

CONDITIONS

Action 65150

CONDITIONS

Operator: Spur Energy Partners LLC 9655 Katy Freeway Houston, TX 77024	OGRID: 328947
	Action Number: 65150
	Action Type: [C-103] NOI Workover (C-103G)

CONDITIONS

Created By	Condition	Condition Date
mgebremichael	should tubing replacement be required, the same tube size shall be replaced as prescribed by the respective order. The packer shall be set not more than 100 ft. above the top perf or top part of the injection interval.	2/22/2024