

Submit 1 Copy To Appropriate District Office

District I – (575) 393-6161
1625 N. French Dr., Hobbs, NM 88240
District II – (575) 748-1283
811 S. First St., Artesia, NM 88210
District III – (505) 334-6178
1000 Rio Brazos Rd., Aztec, NM 87410
District IV – (505) 476-3460
1220 S. St. Francis Dr., Santa Fe, NM 87505

State of New Mexico
Energy, Minerals and Natural Resources

OIL CONSERVATION DIVISION
1220 South St. Francis Dr.
Santa Fe, NM 87505

Form C-103
Revised July 18, 2013

SUNDRY NOTICES AND REPORTS ON WELLS (DO NOT USE THIS FORM FOR PROPOSALS TO DRILL OR TO DEEPEN OR PLUG BACK TO A DIFFERENT RESERVOIR. USE "APPLICATION FOR PERMIT" (FORM C-101) FOR SUCH PROPOSALS.)		WELL API NO. 30-025-04232
1. Type of Well: Oil Well <input type="checkbox"/> X Gas Well <input type="checkbox"/> Other <input type="checkbox"/>		5. Indicate Type of Lease STATE <input type="checkbox"/> FEE <input checked="" type="checkbox"/>
2. Name of Operator APACHE CORPORATION		6. State Oil & Gas Lease No.
3. Address of Operator 303 VETERANS AIRPARK LANE, STE. 3000, MIDLAND TX 79705		7. Lease Name or Unit Agreement Name W.P. BYRD
4. Well Location Unit Letter B : 660 feet from the N line and 1980 feet from the E line Section 12 Township 20S Range 36E NMPM County LEA		8. Well Number 1
11. Elevation (Show whether DR, RKB, RT, GR, etc.) 3556' GR		9. OGRID Number 873
10. Pool name or Wildcat EUNICE MONUMENT; G/SA		

12. Check Appropriate Box to Indicate Nature of Notice, Report or Other Data

NOTICE OF INTENTION TO:

PERFORM REMEDIAL WORK ☐ **PLUG AND ABANDON** ☐
 TEMPORARILY ABANDON ☐ CHANGE PLANS ☐
 PULL OR ALTER CASING ☐ MULTIPLE COMPL ☐
 DOWNHOLE COMMINGLE ☐
 CLOSED-LOOP SYSTEM ☐
 OTHER: ☐

SUBSEQUENT REPORT OF:

REMEDIAL WORK ☐ ALTERING CASING ☐
 COMMENCE DRILLING OPNS. ☐ **P AND A** ☒
 CASING/CEMENT JOB ☐
 OTHER: ☐

13. Describe proposed or completed operations. (Clearly state all pertinent details, and give pertinent dates, including estimated date of starting any proposed work). SEE RULE 19.15.7.14 NMAC. For Multiple Completions: Attach wellbore diagram of proposed completion or recompletion.

2/1/24 - NOTIFIED NMOCD. MIRU.

2/2/24 - 3RD PARTY WIRELINE SET CIBP @ 3505'.

2/5/24 - TAGGED CIBP @ 3505'. CIRCULATE MLF. SPOTTED 35 SX CLASS "C" CEMENT FROM 3505' - 3263'. PERF'D @ 2409'. SPOTTED 50 SX CLASS "C" CEMENT FROM 2458' - 2129'.

2/6/24 - TAGGED @ 2161'. PERF'D @ 1088'. SPOTTED 50 SX CLASS "C" CEMENT FROM 1138' - 835'. APPROVED BY KERRY FORTNER.

2/7/24 - PERF'D @ 258'. PUMPED 233 SX CLASS "C" CEMENT FROM 258' - SURFACE. VERIFIED CEMENT AT SURFACE.

Approved for plugging of well bore only. Liability under bond is retained pending receipt of C-103 (Subsequent Report of Well Plugging) which may be found at OCD Web Page under Forms,

Spud Date:

Rig Release Date:

I hereby certify that the information above is true and complete to the best of my knowledge and belief.

SIGNATURE Kelton Woodard TITLE P & A ENGINEER DATE

Type or print name KELTON WOODARD E-mail address: kelton@jmrsservices.com PHONE: (432)618-1050

For State Use Only

APPROVED BY: Kerry Fortner TITLE Compliance Officer A DATE 2/28/24
 Conditions of Approval (if any):

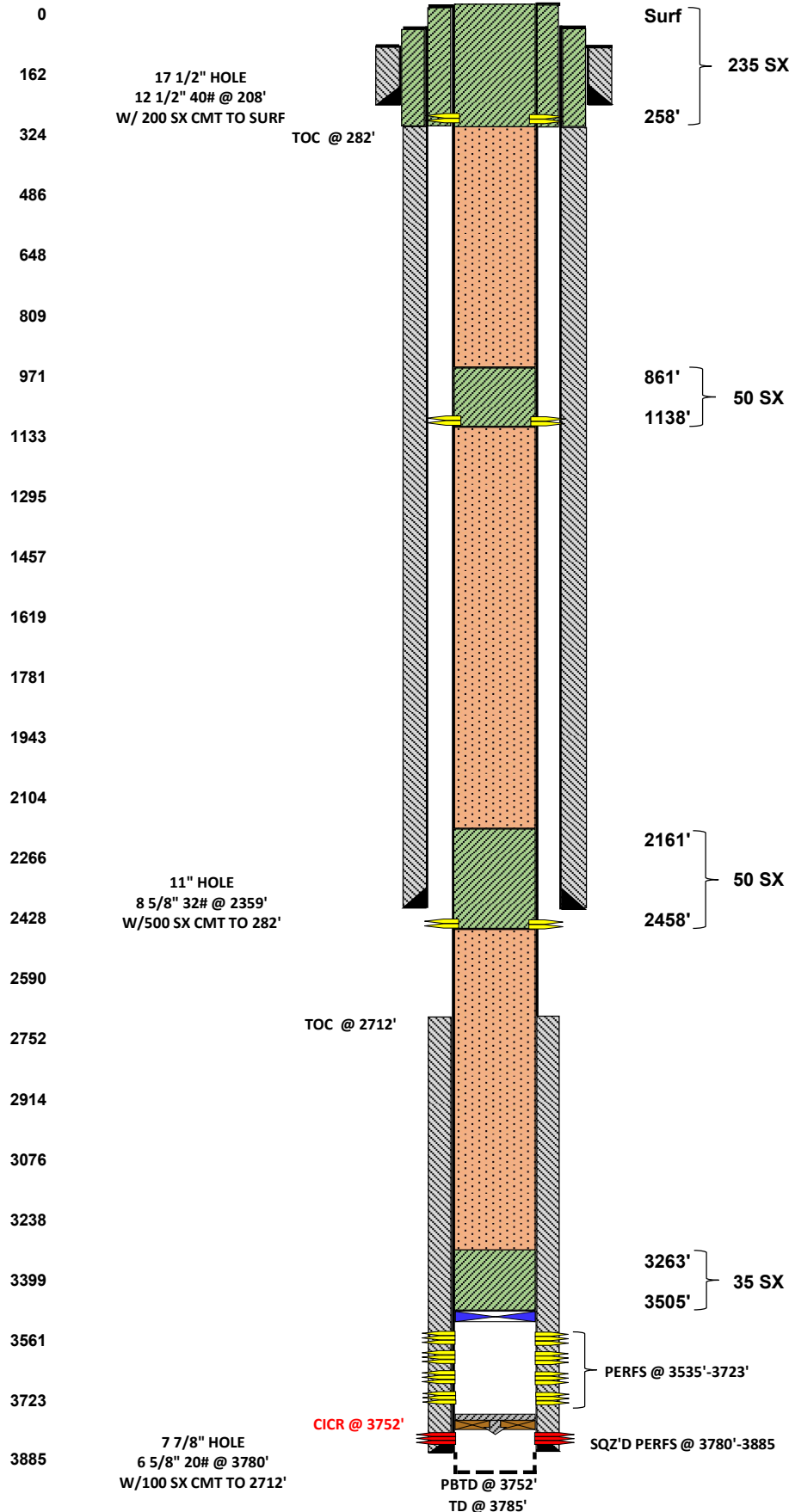


LEASE NAME	W.P. Byrd
WELL #	1
API #	30-025-04232
COUNTY	Lea, NM

WELL BORE INFO.

DEPTH SX/CMT

FINALE P&A WB DIAGRAM



Surf

235 SX

258'

PLUG #4.
2/7/2024 PUH & PERF'D @ 258', CIRC'D 5 1/2" & 8 5/8" W/235 SX CLASS "C" CMT TO SURF, FILL'D UP. RDMO, CUT OFF WH, INSTALL DRY HOLE MARKER, CLEAN LOCATION, P&A COMPLETE.

861'

1138'

50 SX

PLUG #3.
2/6/2024 PUH & PERF'D @ 1088'. UNABLE TO EIR. NOTIFIED KERRY FORTNER W/OCD. SPOTTED 50 SX CLASS "C" CMT FROM 1138'-835'.
2/7/2024 TAGGED TOC @ 861'. KERRY FORTNER W/OCD APPROVED TAG.

2161'

2458'

50 SX

PLUG #2.
2/5/2024 PUH & PERF'D @ 2409'. UNABLE TO EIR. NOTIFIED KERRY FORTNER W/OCD. SPOTTED 50 SX CLASS "C" CMT FROM 2458'-2129'.
2/6/2024 TAGGED TOC @ 2161'. KERRY FORTNER W/OCD APPROVED TAG.

3263'

3505'

35 SX

PLUG #1.
2/1/2024 MIRU P&A RIG.
2/2/2024 RIH W/WL & SET CIBP @ 3505'. RAN CBL & DETERMINED POOR CMT BEHIND 6 5/8" CSG. CONTACTED KERRY FORTNER W/OCD. HE ADVISED TO FOLLOW APPR. PROCEDURE.
2/5/2024 RIH CIRC'D W/MLF, & SPOTTED 35 SX CLASS "C" CMT FROM 3505'-3263'.

District I
1625 N. French Dr., Hobbs, NM 88240
Phone:(575) 393-6161 Fax:(575) 393-0720
District II
811 S. First St., Artesia, NM 88210
Phone:(575) 748-1283 Fax:(575) 748-9720
District III
1000 Rio Brazos Rd., Aztec, NM 87410
Phone:(505) 334-6178 Fax:(505) 334-6170
District IV
1220 S. St Francis Dr., Santa Fe, NM 87505
Phone:(505) 476-3470 Fax:(505) 476-3462

State of New Mexico
Energy, Minerals and Natural Resources
Oil Conservation Division
1220 S. St Francis Dr.
Santa Fe, NM 87505

COMMENTS

Action 314457

COMMENTS

Operator: APACHE CORPORATION 303 Veterans Airpark Ln Midland, TX 79705	OGRID: 873
	Action Number: 314457
	Action Type: [C-103] Sub. Plugging (C-103P)

COMMENTS

Created By	Comment	Comment Date
plmartinez	DATA ENTRY PM.	2/28/2024

District I
1625 N. French Dr., Hobbs, NM 88240
Phone:(575) 393-6161 Fax:(575) 393-0720
District II
811 S. First St., Artesia, NM 88210
Phone:(575) 748-1283 Fax:(575) 748-9720
District III
1000 Rio Brazos Rd., Aztec, NM 87410
Phone:(505) 334-6178 Fax:(505) 334-6170
District IV
1220 S. St Francis Dr., Santa Fe, NM 87505
Phone:(505) 476-3470 Fax:(505) 476-3462

State of New Mexico
Energy, Minerals and Natural Resources
Oil Conservation Division
1220 S. St Francis Dr.
Santa Fe, NM 87505

CONDITIONS

Action 314457

CONDITIONS

Operator: APACHE CORPORATION 303 Veterans Airpark Ln Midland, TX 79705	OGRID: 873
	Action Number: 314457
	Action Type: [C-103] Sub. Plugging (C-103P)

CONDITIONS

Created By	Condition	Condition Date
kfortner	Need C103Q and marker photo to release	2/28/2024