

Well Name: SHARP NOSE FED	Well Location: T20S / R33E / SEC 13 / NWSE / 32.5724353 / -103.6148983	County or Parish/State: LEA / NM
Well Number: 01	Type of Well: OIL WELL	Allottee or Tribe Name:
Lease Number: NMLC065447	Unit or CA Name:	Unit or CA Number:
US Well Number: 3002531397	Well Status: Abandoned	Operator: XTO ENERGY INCORPORATED

Accepted for Record Only

SUBJECT TO LINE APPROVAL BY BLM

NMOCD 2/28/24

X F

Subsequent Report

Sundry ID: 2773565

Type of Submission: Subsequent Report	Type of Action: Plug and Abandonment
Date Sundry Submitted: 02/06/2024	Time Sundry Submitted: 07:48
Date Operation Actually Began: 12/28/2023	

Actual Procedure: XTO Energy Inc., has P&A'd the above mentioned well per the attached summary report and WBD.

SR Attachments

Actual Procedure

Sharp_Nose_Federal_1_P_A_Summary_Report_w_WBD_20240206074652.pdf

Received by OCD: 2/12/2024 12:23:43 PM

Page 2 of 9

Well Name: SHARP NOSE FED	Well Location: T20S / R33E / SEC 13 / NWSE / 32.5724353 / -103.6148983	County or Parish/State: LEA / NM
Well Number: 01	Type of Well: OIL WELL	Allottee or Tribe Name:
Lease Number: NMLC065447	Unit or CA Name:	Unit or CA Number:
US Well Number: 3002531397	Well Status: Abandoned	Operator: XTO ENERGY INCORPORATED

Operator

I certify that the foregoing is true and correct. Title 18 U.S.C. Section 1001 and Title 43 U.S.C. Section 1212, make it a crime for any person knowingly and willfully to make to any department or agency of the United States any false, fictitious or fraudulent statements or representations as to any matter within its jurisdiction. Electronic submission of Sundry Notices through this system satisfies regulations requiring a

Operator Electronic Signature: SHERRY MORROW	Signed on: FEB 06, 2024 07:47 AM
Name: XTO ENERGY INCORPORATED	
Title: Regulatory Analyst	
Street Address: 6401 HOLIDAY HILL ROAD BLDG 5	
City: MIDLAND	State: TX
Phone: (432) 218-3671	
Email address: SHERRY.MORROW@EXXONMOBIL.COM	

Field

Representative Name:		
Street Address:		
City:	State:	Zip:
Phone:		
Email address:		

BLM Point of Contact

BLM POC Name: JAMES A AMOS	BLM POC Title: Acting Assistant Field Manager
BLM POC Phone: 5752345927	BLM POC Email Address: jamos@blm.gov
Disposition: Accepted	Disposition Date: 02/12/2024
Signature: James A Amos	

Sharp Nose Federal 001
API 3002531397
P&A Summary Report

12/28/23: Held tgsm and review JSA/PSMS w/ crew. Spot in all equipment in gated in location. Pick up tools and shut in overnight.

12/29/23: Rig up pulling unit and reverse unit. Change equipment to rods. Bleed down tbg and csg to flowback tank. Appeared tbg had bled down to 0 psi. Load and test tbg to 800 psi. Leaked off 200 psi in 1 min. Bleed off pressure. Closed tbg in and tbg regained 400 psi. Continue to bleed down csg and tbg. Begin pumping 10# brine down csg and caught pressure w/ 40 bbls pumped. Continue to circulate well w/ total of 250 bbls 10# brine. Csg static. Tbg slightly running over. Secure well and shut in overnight. SDFHWE.

1/2/24: Open well and bleed down pressure to 0 psi. Went to bleed down csg pressure and saw tbg quickly gained 500 psi. Appears to possibly have paraffin. Bleed down tbg to 0 psi. Unseat pump. Lay down 1 1/2"x26' polish rod. Lay down 9' and 18' 1 1/4" FG pony rods and 3- 1 1/4" FG rods. Install 1 1/2"x26' polish rod and stuffing box. Rig up Lobo hot oiler. Circulate well w/ 230 bbls f/w treated w/ biocide @ 200 degrees down csg. Circulated around wellbore. Rig down hot oiler. Pump 30 bbls 10# brine down tbg to lower pressure in tbg overnight. Secure well and shut in overnight.

1/3/24: Circ 60 bbls 10# brine down tbg. Tbg 0 psi. Lay down 1 1/2"x26' polish rod and 2 7/8" stuffing box. TOH & LD 113 - 1- 1/4" FG rods, 243 - 7/8" rods, 20 - 1 -1/2" SB's, 4' guided stabilizer sub, and 1- 3/4" x 30' pmp. Change equipment from rods to 2-7/8" tbg. Tie back rig. SWI. SDFN.

1/4/24: Circulate total of 300 bbls 10# brine around wellbore. Pumping 10.1# brine and receive 10.1# in returns. Allow couple minutes to relax. Shut well in to determine SIP. SIP: 180 psi in 30 min. Open csg to monitor flow rate. Tbg will go on vac and csg occasionally burps out fluid/gas. Circulate an additional csg volume of 155 bbls 10# brine down tbg. Close csg in and attempt to bullhead. Pressure rises in both csg and tbg to 1000 psi. Shut down and pressure bled off very slowly. Down to 500 in 5 min. Order 10.7# CaCl. Will circulate kill fluid in morning. Secure well and shut in overnight.

1/5/24: Circulate well w/ 275 bbls 10.9# CaCl. Monitor well for 30 min. Tbg and csg 0 psi. Function test hydraulic bops. Nipple down wellhead. Install tbg hanger and land in wellhead. Nipple up hydraulic bop. Torque up Bop. Was question on whether hanger installed would seal appropriately to pressure test with the style of wellhead. Attempt to pressure test and would not hold pressure. Is an oddball style wellhead and Sonic does not have access to hanger for type of wellhead. Call Thunderbird to order 5 1/2" cup style packer to pressure test. Wait on packer to be delivered to location. Cup packer arrived. Pick up on tbg string. TAC was free. Install 5 1/2" cup packer below top jt 2 7/8" and drop pkr down. Pressure test Bop. Low- 250 psi. Held. No visible leaks. High- 2200 psi. Held. No visible leaks. Pick up on tbg string and lay down 5 1/2" cup packer. Secure well and shut in overnight. SDFWE.

1/8/24: Shut down due to high wind.

1/9/24: Had issue w/ rig brake not releasing properly. Possibly ice plug in air lines. Rig is equipped w/ air brake system. Begin pulling tbg. Pulled top jt and 10' of 2nd jt of tbg and TAC hung up. Work TAC to get free. Unable to free TAC. Power swivel has been called for. Rig up power swivel. Work tbg and get TAC free. Rig down power swivel. Begin pooh and hung up once again w/ 13 jts 2 7/8" out of hole. TAC approx @ 9883'. Work tbg and could not get free w/ tbg tongs. Rig up power swivel. Work TAC free. Rig down power swivel. Continue pooh w/ total of 122 jts 2 7/8" L-80. Secure well and shut in overnight.

1/10/24: Open well. Bleed down pressure. Pooh w/ 194 jts 2 7/8" L-80, 5 1/2" TAC, 16 jts 2 7/8" L-80, 1 jt 2 7/8" IPC, 2 7/8" sn, 2 7/8"x4' tbg sub, 2 7/8" slotted mud anchor, and 4 mud jts w/ bullplug. Rig up Renegade wireline equipment. Rih w/ 4.36" GRJB and tag @ 12,880'. Intent was to dump bail cmt @ 13,012'. Notify BLM and received approval to proceed to next plug. Setting CIBP @ 11,330'. Pooh w/ GRJB. Rih w/ weight bar to confirm tag. Tag once again @ 12,880'. Pooh w/ tools. Rih with 5 1/2" CIBP and set @ 11,330'. Pooh w/ tools. Rig down wireline equipment. Secure well and shut in overnight.

1/11/24: Shut down due to high wind forecast.

1/12/24: Open well and bleed down pressure. Rig up Hydrostatic testing equipment. Rih w/ 300 jts 2 7/8" L-80 testing to 7000 psi. Begin having issues w/ test bars due to paraffin in last 30 jts to run. Had to remove bars and clean up in several occasions. Rig down hydrotesting equipment. Decided to lay down last 30 jts and replace w/ other tbg. RDMO hydrotest equipment. Rih w/ 30 jts 2 7/8". Total 330 jts in well. Spot in lay down machine and pipe racks. Secure well and shut in over weekend.

1/15/24: Open well and bleed down pressure. Pooh laying down 26 jts 2 7/8" w/ paraffin on ID. Pick up 44 jts 2 7/8" L-80. Tag 5 1/2" CIBP @ 11,330' w/ 348 jts total. Rig up Big E cement equipment. Circulate 260 bbls 10# brine gel. Pump 1 bbls f/w spacer. Pump 55 Sx Class H Cmt (11.5 bbls 15.6#). Displace with 1 bbls f/w spacer and 61 bbls 10# brine. Shut down. Well balanced. Pooh laying down 4 jts 2 7/8" and tbg began pulling wet. Continue to pull total of 20 jts to get EOT above anticipated cement top and intended to reverse out. Pump on csg but pressuring up and no returns. Pump down tbg to get tbg unplugged. Not successful. Pooh w/ 40 jts 2 7/8" to make sure tbg is out of cement in csg. EOT @ 9255 w/ 284 jts. Secure well and shut in overnight.

1/16/24: Open well and bleed down. Gas and oil at surface. Well dead. Rih and TTOC @ 11,211' w/ 344 jts 2 7/8" total. Pooh w/ 60 jts 2 7/8". Tbg full of fluid at that point. Will be rigging up wireline to shoot drain holes. Wait on TWG wireline to get to location. Held hold point w/ wireline crew. Rig up TWG wireline equipment. Rih with 1 9/16" gun and tag @ 7822'. EOT @ 9255'. Shoot drain holes @ 7774'. Pooh w/tools. Rig down wireline equipment. Csg began running over slightly w/ gas and fluid. Will circulate well to remove gas in morning before Pooh. Held AAR w/ crew. Secure well and shut in overnight.

1/17/24: Circulate well w/ 170 bbls 10# brine to get gas out. Pooh w/ 239 jts 2 7/8" L-80. Lay down jt 239 w/ drain holes. Lay down 1 jt free, and 44 jts 2 7/8" plugged w/ cmt. Break for lunch. Move tbg off of pipe racks and move pipe racks to side of location. Rig up Renegade wireline equipment. Rih w/ 4.4" GRJB to 11,000. Pooh w/ tools. Rih and set 5 1/2" CIBP @ 10,980'. Pooh w/ tools. Rig down wireline equipment. Load well w/ 11 bbls 10# brine. Test CIBP/Csg to 700 psi. Held. Bleed off pressure. Secure well and shut in overnight.

1/18/24: Open well. Bleed down gas/oil until 0 psi. Rig up Renegade wireline equipment. PT Lubricator to 1500 psi. Held, no leaks. Rih w/ bailer and dump 35' Class H Cmt on to of CIBP @ 10,980'. Anticipated TOC @ 10,945'. Made 2 runs. Pooh w/ bailer and lay down. Rig down wireline equipment. Re-spot pipe racks and load 40 jts 2 7/8" on racks and tally. Break for lunch. Rih open ended w/ 298 jts 2 7/8" L-80 from derrick. Pick up 38 jts 2 7/8" L-80 from racks. Tag TOC @ 10,942' w/ 336 jts total. Lay down 1 jt 2 7/8". Pump 10 bbls 10# Brine down tbg to ensure tbg clear of cmt. Secure well and shut in overnight.

1/19/24: Circulate w/ 230 bbls 10# brine around wellbore. Test CIBP/Csg to 700 psi. Held. Pooh laying down 32 jts 2 7/8". While laying down tbg, transmission on rig was kicked out of gear on rig and could not put rig back in gear. Had issue w/ electronic shifter. Repair shifter and continued laying down tbg. EOT @ 9876' w/ 303 jts 2 7/8". Rig up Big E cmt equipment. Had issue w/ centrifugal/discharge pump on pump truck. Able to resolve and working properly. Prime up and test lines to 2000 psi. Held, no visible leaks. Break circulation w/ 5 bbls 10# brine. Pump 10 bbls f/w spacer and follow w/ 35 Sx Class H Cmt (7 bbls 15.6#). Displace with 4 bbls f/w spacer and 51 bbls 10# brine. Shut down. Pooh laying down 16 jts 2 7/8" and stand back 30 jts 2 7/8" to derrick. EOT @ 8371' w/ 257 jts 2 7/8". Reverse out w/ 70 bbls 10# brine. Rig down Big E cmt equipment. Secure well and shut in over weekend.

1/22/24: TIH 37 jts 2 7/8" tbg. Tag TOC @ 9,576'. TOH 294 jts 2 7/8" tbg. MIRU Renegade WL trk. RIH & set 5 1/2" CIBP @ 9,360'. POH w/setting tl.. RDMO WL trk. Load csg w/ 22 bbls 10# brine. Test CIBP/Csg to 500 psi for 30 min. Tst OK. TIH 287 jts 2 7/8" tbg open ended. Tag CIBP @ 9,350'. MIRU Big E cement equipment. PT lines to 2,000 psi. Break circ and pump 10 BFW spacer. Pump 35 sxs Class H Cmt (mixed @ 15.6 ppg, 1.06 cu/ft sx). SD. Washout lines. Tie back on to tbg. Displace w/ 4 BFW & 48 bbls 10# brine. Shut down after 46 bbls pumped to allow to balance. Calc cmt plg fr/9,350' - 9,052'. TOH & LD 10 jts 2 7/8" tbg. EOT (9,006') above cement. Rig shut off at this point and did not immediately turn back on. Was down for approx 5 min then able to turn rig back on. TOH 9 jts 2-7/8" tbg. After 8th jt tbg started pulling weight. TOH an additional 6 jts tbg, pulling wet. Attempt to reverse out, pressuring up w/ no returns. Tie on to tbg and pressure up to 2,000 psi plugged. TOH 28 jts tbg. 20 stands in derrick. EOT @ 7705' w/ 236 jts 2 7/8". RD Big E cmt equip. SWI. SDFN.

1/23/24: Rih w/ 42 jts 2 7/8". Tag TOC @ 9065' w/ 278 jts total. Pooh w/ 145 jts 2 7/8". Rig transmission began shifting on its own to different gears. Would shift to neutral and unable to shift back into gear. Change out electronic gear shifter and had same result. Mechanic on location working on rig. 133 jts in well. EOT @ 4344'. Secure well and shut in overnight.

1/24/24: Mechanic on location. Rig working properly. Had mechanic on location while rig working to ensure rig transmission would not do same. Pooh w/ 133 jts 2 7/8". Lay down 10 jts plugged w/ cmt. Rih w/ 257 jts 2 7/8" L-80. EOT @ 8405'. Ready to spot 35 Sx Class H. Secure well and shut in overnight.

1/25/24: Load well w/ 57 bbls 10# brine. Test csg to 500 psi. Held. Bleed off pressure. Wait on Big E cement equipment. Cement crew was going to be unable to make job today, got held up on prior job. Secure well and shut in overnight.

1/26/24: Rig up Big E cement equipment. Prime and test lines to 2000 psi. Held, no leaks. Pump 6 bbls f/w spacer. Went to mix cement but could not push cement from bulk truck to pump truck. System pressurized appropriately but would not push cement out of pod. Wait on driver to take bulk truck back to Midland yard and pick up other alternate bulk truck. On way back, truck driver was pulled over by DOT and truck was put out of service. Secure well and shut in overnight. SDFWE.

1/29/24: MIRU Big E cement equip. Prime and PT to 2,000 psi. Held, no leaks. Break circulation and pmp 6 BFW spacer. Plg w/35 sxs Class H cmt (mixed @ 15.6 ppg, 1.06 cu ft/sx, 37.1 cu ft). Pmp dwn tbg w/6.6 bbls cmt, 4 BFW & 42 bbls 10# brine. Calc cmt plg fr/8,405' - 8,107'. TOH & LD 2 7/8" tbg subs & 9 jts tbg to be at TOC. Found tbg full when breaking connection on 9th jt.. Pmp dwn csg to reverse out w/ cmt pump truck. Casing pressure climbed to 1,000 psi and no returns. Pmp dwn tbg and caught pressure @ 800 psi and drpd to 500 psi w/full circ. Switch to reverse out. Pmp dwn csg w/ 80 bbls 10# brine. Approx 1/4 bbl cmt. to surf. TOC calculated to be at 8,090'. Procedure calls for minimum TOC @ 8,193'. TOH & LD 82 jts 2 7/8". EOT @ 5,519'. RU Big E. Break circ & pmp 10 bbls 10# brine. Pmp 7 BFW spacer. Mix Plug w/50 sxs Class C cmt (mixed @ 14.8 ppg, 1.32 cu ft/sx, 66 cu ft). Pmp 11.7 bbls cmt, 3 BFW spacer & 25 bbls 10# brine. Calc cmt plg fr/5,519' - 4,999'. TOH & LD 16 jts tbg. TOH 10 jts tbg. Reverse out w/ 50 bbls 10# brine. TOH 30 jts tbg. EOT @ 3,693'. SWI. SDFN.

1/30/24: TIH 45 jts 2 7/8" tbg. Tag TOC @ 5,120' w/ 157 jts. TOH & LD 37 jts 2 7/8" tbg. TOH 120 jts tbg. Inspected tbg to ensure no restriction in tbg before pumping larger cement plugs. TIH 120 jts 2 7/8" tbg and 18' of 2 7/8" tbg subs. EOT @ 3,940'. RU Big E cement equip. Prime and PT to 2,000 psi. Held, no leaks. Break circ and pmp 5 BFW spacer. Plg w/75 sxs Class C cmt (mixed @ 14.8 ppg, 1.32 cu ft/sx 99 cu ft). Pmp dwn tbg w/17.6 bbls cmt, 2 BFW spacer and 16 bbls 10# brine. Calc cmt plg fr/3,940' - 3,144'. TOH & LD tbg subs & 25 jts 2 7/8" tbg. TOH 40 jts tbg. EOT @ 1,803'. SWI. SDFN.

1/31/24: TIH 33 jts 2 7/8" tbg. Tag TOC @ 3,183' w/ 98 jts. TOH & LD 1 jt. tbg. TIH 10' tbg sub. EOT @ 3,183'. RU Big E equip. PT lines to 2,000 psi. Held OK. Estb circ w/5 BFW spacer. Pmp 75 Sx Class C (Mixed @ 14.8 ppg, 1.32 cu fr/sx, 99 cu ft). Pmp 17.6 bbls cmt, 1.5 BFW & 12 bbls 10# brine. Calc cmt plg fr/3,183' - 2,387'. TOH & LD 25 jts tbg. TOH 80 jts tbg. EOT @ 1,055'. Reverse out w/ 25 bbls 10# brine. WOC. TIH 43 jts tbg. Tg TOC @ 2,440'. RU Big E cmt equip. PT lines to 2,000 psi. Estb circ w/5 bbls 10# brine. Pump 3.5 BFW spacer. Pump 85 Sx Class C cmt (mixed @ 14.8 ppg, 1.32 cu ft/sx 112.2 cu ft). Pmp 20 bbls cmt, 1.5 BFW & 7.5 bbls 10# brine. Calc cmt plg fr/2,440' - 1,536'. TOH & tbg subs & 30 jts tbg. TOH 40 jts tbg. EOT @ 782'. Reverse out w/25 bbls 10# brine. RD Big E equip. SWI. SDFN.

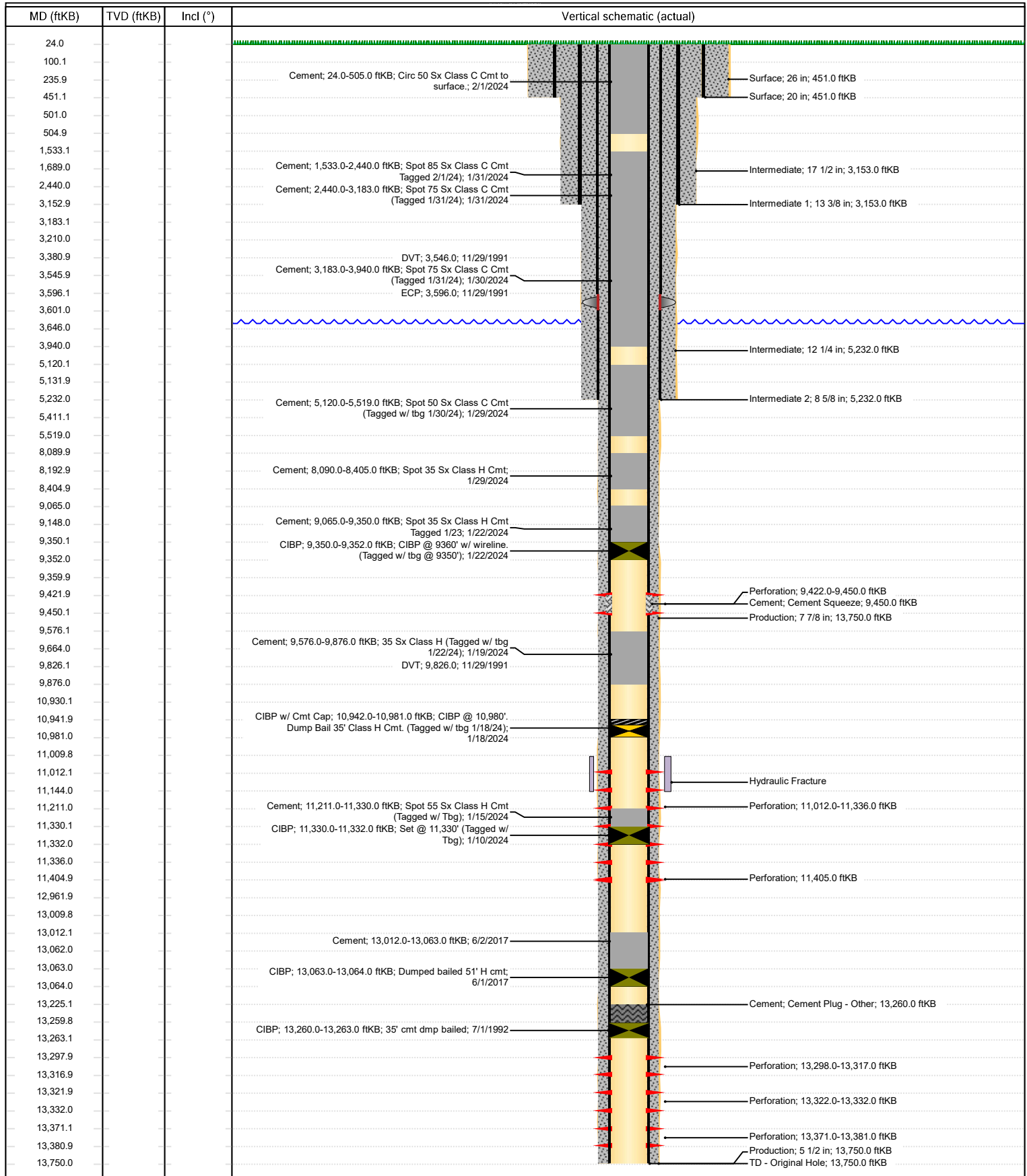
2/1/24: Rih w/ 22 jts 2 7/8". Tag TOC @ 1533' w/ 47 jts total. Pooh laying down 32 jts 2 7/8". EOT @ 505' w/ 15 jts 2 7/8" and 18' tbg subs. Rig up Big E cmt equipment. Prime and test lines to 1000 psi. Held, no leaks. Break circulation and pump 5 bbls f/w. Mix and pump 50 Sx Class C cmt and receive good 14.8# cmt at surface. Shut down and break off hose. Pooh laying down tbg subs and 15 jts 2 7/8". Rinse off Bop and 2 7/8" tbg with f/w. Rig down tbg tongs and work floor. Nipple down hydraulic bop. Fill csg w/ 14.8# cmt to surface. Rig down Big E cement equipment. Rig down pulling unit and reverse unit. Clean up location and prep all equipment to move. Secure well and shut in overnight. P&A complete. XTO to cutoff wellhead & install DHM.



Schematic - Vertical with Perfs

Well Name: Sharp Nose Federal 001

API/UWI 3002531397	SAP Cost Center ID 1684681001	Permit Number	State/Province New Mexico	County Lea
Surface Location T20S-R33E-S13	Spud Date 11/29/1991 00:00	Original KB Elevation (ft) 3,634.00	Ground Elevation (ft) 3,610.00	KB-Ground Distance (ft) 24.00



District I
1625 N. French Dr., Hobbs, NM 88240
Phone:(575) 393-6161 Fax:(575) 393-0720
District II
811 S. First St., Artesia, NM 88210
Phone:(575) 748-1283 Fax:(575) 748-9720
District III
1000 Rio Brazos Rd., Aztec, NM 87410
Phone:(505) 334-6178 Fax:(505) 334-6170
District IV
1220 S. St Francis Dr., Santa Fe, NM 87505
Phone:(505) 476-3470 Fax:(505) 476-3462

State of New Mexico
Energy, Minerals and Natural Resources
Oil Conservation Division
1220 S. St Francis Dr.
Santa Fe, NM 87505

COMMENTS

Action 313532

COMMENTS

Operator: XTO ENERGY, INC 6401 Holiday Hill Road Midland, TX 79707	OGRID: 5380
	Action Number: 313532
	Action Type: [C-103] Sub. Plugging (C-103P)

COMMENTS

Created By	Comment	Comment Date
plmartinez	DATA ENTRY PM.	2/28/2024

District I
1625 N. French Dr., Hobbs, NM 88240
Phone:(575) 393-6161 Fax:(575) 393-0720
District II
811 S. First St., Artesia, NM 88210
Phone:(575) 748-1283 Fax:(575) 748-9720
District III
1000 Rio Brazos Rd., Aztec, NM 87410
Phone:(505) 334-6178 Fax:(505) 334-6170
District IV
1220 S. St Francis Dr., Santa Fe, NM 87505
Phone:(505) 476-3470 Fax:(505) 476-3462

State of New Mexico
Energy, Minerals and Natural Resources
Oil Conservation Division
1220 S. St Francis Dr.
Santa Fe, NM 87505

CONDITIONS

Action 313532

CONDITIONS

Operator: XTO ENERGY, INC 6401 Holiday Hill Road Midland, TX 79707	OGRID: 5380
	Action Number: 313532
	Action Type: [C-103] Sub. Plugging (C-103P)

CONDITIONS

Created By	Condition	Condition Date
kfortner	Like approval from BLM	2/28/2024