

Well Name: MCDANIEL B	Well Location: T29N / R11W / SEC 17 / NWNW / 36.729691 / -108.01915	County or Parish/State: SAN JUAN / NM
Well Number: 1E	Type of Well: CONVENTIONAL GAS WELL	Allottee or Tribe Name:
Lease Number: NMSF078813	Unit or CA Name: DANIEL	Unit or CA Number: NMNM73638
US Well Number: 3004524435	Well Status: Abandoned	Operator: HILCORP ENERGY COMPANY

Subsequent Report

Sundry ID: 2779227

Type of Submission: Subsequent Report

Date Sundry Submitted: 03/12/2024

Date Operation Actually Began: 02/21/2024

Type of Action: Plug and Abandonment

Time Sundry Submitted: 08:35

Actual Procedure: Hilcorp Energy Company plugged and abandoned the subject well on 3/7/2024 per the attached report.

SR Attachments

Actual Procedure

McDANIEL_B_1E_PA_Subsequent_20240312083336.pdf

HILCORP_MCDANIEL_B_1E_CBL_20240312083324.pdf

Well Name: MCDANIEL B	Well Location: T29N / R11W / SEC 17 / NWNW / 36.729691 / -108.01915	County or Parish/State: SAN JUAN / NM
Well Number: 1E	Type of Well: CONVENTIONAL GAS WELL	Allottee or Tribe Name:
Lease Number: NMSF078813	Unit or CA Name: DANIEL	Unit or CA Number: NMNM73638
US Well Number: 3004524435	Well Status: Abandoned	Operator: HILCORP ENERGY COMPANY

Operator

I certify that the foregoing is true and correct. Title 18 U.S.C. Section 1001 and Title 43 U.S.C. Section 1212, make it a crime for any person knowingly and willfully to make to any department or agency of the United States any false, fictitious or fraudulent statements or representations as to any matter within its jurisdiction. Electronic submission of Sundry Notices through this system satisfies regulations requiring a

Operator Electronic Signature: TAMMY JONES

Signed on: MAR 12, 2024 08:35 AM

Name: HILCORP ENERGY COMPANY

Title: Regulatory Compliance Specialist

Street Address: 382 ROAD 3100

City: AZTECState: NM

Phone: (505) 324-5185

Email address: TAJONES@HILCORP.COM

Field

Representative Name:

Street Address:

City:State:Zip:

Phone:

Email address:

BLM Point of Contact

BLM POC Name: MATTHEW H KADE

BLM POC Title: Petroleum Engineer

BLM POC Phone: 5055647736

BLM POC Email Address: MKADE@BLM.GOV

Disposition: Accepted

Disposition Date: 03/12/2024

Signature: Matthew Kade

McDANIEL B 1E

30.045.24435

PLUG & ABANDONMENT

2/21/2024 – MIRU. CK PRESSURES. SITP = 380 PSI, SICP = 405 PSI, SIICP = 0 PSI, SIBHP = 14 PSI. B/D WELL, 28 MINS. ND WH. NU BOP. PRESSURE TEST & FUNCTION TEST BOPs. RU RIG FLOOR. PULL TBG HANGER @ 12K SW, SUPPOSE TO BE 29,800 ON SW. 2.375" 4.7# TBG. AFTER PULLING HANGER WELL STARTED FLOWING UP TBG. (NOTE SLICK LINE ONLY GOT TO 2546' IN 2.375" TBG WITH COMPRESSION BLOCK BEFORE RIG CAME ON) MAY HAVE PARTED TBG @ THAT DEPTH. RU CEMENTERS. PT PUMP & LINES. PUMP DOWN TBG W/45 BBLS FW. STARTED CIRCULATING UP CASING. WELL FINALLY STATIC. STARTED LD 2.375" PRODUCTION TBG ONTO TRAILOR. LD 79 JTS. HEAVY SCALE & HOLES IN TBG. WELL STARTED FLOW AGAIN, WHILE LD TBG. TBG PARTED @ 2487'. TOTAL OF 3859' OF FISH STILL IN HOLE. DRAIN & WINTERIZE EQUIPMENT. SISW. DEBRIEF CREW. SDFN.

2/22/2024 – CK PRESSURES. SITP = 0 PSI, SICP = 450 PSI, SIICP = 0 PSI, SIBHP = 14 PSI. B/D WELL, 5 MINS. RU SELECT TOOL HAND. TALLEY & STRAP WORK STRING. MU FISHING BHA. 4-11/16 OVERSHOT, 3 1/16" GR. OVERSHOT XO WASH PIPE BUSHING. 2 JTS OF 4.5" WASH PIPE, XO TO 2.375" EUE & 1 PUP JT. BHA LENGTH 28.5'. PU 79 JTS W/BHA TO TOP OF FISH @ 2488'. TAG FISH @ 2488', LD 1 JT & PU SWIVEL TO ROTATE AS WE SLACK OFF OVER FISH WITH OVER SHOT. CHASE FISH DOWN 32' TO 2522'. SLIGHT CHANGE IN WEIGHT FROM 7K TO 9.5K. LD SWIVEL, LD 2 JTS & TOO H TO CHECK WASHOVER PIPE & GRAPPLER. PULLED 15' & 8" OF FISH. ALOT OF SCALE AND 3" TO 5" HOLES AROUND FISH. LD WASHOVER PIPE EXTENSIONS. WAITING ON FULL JTS OF WASHOVER PIPE & NEW GRAPPLER. MU NEW BHA W/ 2 JTS OF WASH OVER PIPE. STAND BACK BHA. RIH IN THE MORNING. DRAIN & WINTERIZE EQUIPMENT. SISW. DEBRIEF CREW. SDFN.

2/23/2024 – CK PRESSURES. SITP = 0 PSI, SICP = 415 PSI, SIICP = 0 PSI, SIBHP = 12 PSI. B/D WELL, 5 MINS. FINISH RU SELECT FISHING TOOLS. BHA 4-11/16 OVERSHOT, 3 1/16" GR. OVERSHOT XO WASH PIPE BUSHING. 2 JTS OF 4.5" WASH PIPE EXTENSIONS, 2 FULL JTS OF WASHOVER PIPE XO TO 2.375" EUE & 1 PUP JT. BHA TOTAL 84.23'. TIH 5 STDS. WELL, STARTED FLOWING UP TBG. RU CEMETERS, PUMP DOWN TBG TO GET WELL BALANCED. TIH & SWIVEL UP. LATCH ONTO COLLAR @ 2551'. SW @ 9K & PULLED TO 14K. HOLD PJSM. RU DRAKE WIRELINE. RU LUBRICATOR. RIH W/1.437" ROPE SOCKET 1.375" W/SINKER BAR & CCL 1.437 TO 2478'. COULD NOT GET THROUGH 1.5" RESTRICTION ON BHA. LD GR. MU 1" TOOLS. RIH W/1" SINKER BAR & CCL. STILL TAGGING WITH E-LINE @ 2548'. END OF BHA IS @ 2551'. POOH & RD WIRELINE. TIE BACK ON TO TBG. SW @ 9K & PULL TO 58K. WORK TBG & NO CHANGE. DECIDED TO BACK OFF FISH & TOO H. COULD NOT RELEASE FISH OFF OF GRAPPLER. SWIVEL UP TO BACK OFF GRAPPLER, STILL NOT RELEASING. WORKED TBG UP & DOWN. NO RELEASE. HANG SWIVEL. SHUT IN TBG W/VALVE & NEEDLE VALVE. DRAIN & WINTERIZE EQUIPMENT. SISW. DEBRIEF CREW. SDFN.

2/26/2024 – CK PRESSURES. SITP = 500 PSI, SICP = 500 PSI, SIICP = 0 PSI, SIBHP = 12 PSI. B/D WELL, 10 MINS. RU CEMENTERS. PT PUMP & LINES. PUMP 60 BBLS TO CIRCULATE OUT GAS & MAKE WELL STATIC ENOUGH TO RU WIRELINE. HOLD PJSM. RU DRAKE WIRELINE. RU LUBRICATOR. RIH W/1-11/16" CHEMICAL CUTTER TO 2475' & CHEMICAL CUT 2' ABOVE BHA ON 2-3/8" PUP JT. TBG CAME FREE. POOH W/WIRELINE & RD. LD 79 JTS OF 2.375" TBG ONTO TRAILOR. PLUS, CHEMICAL CUT JT. MOVE AROUND TBG TRAILORS. SPOT IN TRAILOR W/ P-110 HYD CS IJ. 206 JTS TOTAL ON TRAILOR. MU FISHING BHA W/4-11/16" OVERSHOT W/EXTENSION AN 3-7/16" GR, 2-3/8" REG X 2-3/8" IF & 2-3/8" CS HYD X 2-3/8" REG. TOTAL BHA 11.46'. PU 79 JTS OF 2-3/8" P-110 HYD CS TO 2475'. TAG TOP OF FISH @ 2475' ABOVE ORGINAL BHA. WALKED UP SW FROM 10.5K TO 110K. WORKED TBG UP & DOWN & NO MOVEMENT. PROD. TBG & BHA STILL @ SAME DEPTH. LEFT 85K ON TBG, SET SLIPS, SHUT IN BOP & LEAVE IT OVERNIGHT. DRAIN & WINTERIZE EQUIPMENT. SISW. DEBRIEF CREW. SDFN.

McDANIEL B 1E

30.045.24435

PLUG & ABANDONMENT

2/27/2024 – CK PRESSURES. SITP = 350 PSI, SICP = 350 PSI, SIICP = 0 PSI, SIBHP = 8 PSI. B/D WELL, 5 MINS. RU CEMENTERS. PT PUMP & LINES. PUMP 60 BBLS TO CIRCULATE OUT GAS & MAKE WELL STATIC. CHECK SW OFF SLIPS STILL @ 85K FROM YESTERDAY EVENING. START WORKING TBG UP & DOWN FROM 28K TO 110K. SD DUE TO BRAKE ADJUSTER CAME APART ON RIG, WAITING ON PARTS & MECHANIC FROM TOWN. COULD NOT FIND THE PARTS IN TOWN & HAD TO ORDER PARTS. SISW. SDFN.

2/29/2024 – CK PRESSURES. SITP = 610 PSI, SICP = 610 PSI, SIICP = 0 PSI, SIBHP = 0 PSI. B/D WELL, 8 MINS. RU CEMENTERS. PT PUMP & LINES. PUMP 60 BBLS TO CIRCULATE OUT GAS & RU POWER SWIVEL. HOLD PJSM, WITH CREW & SELECT HAND. FOR DOING A BLIND BACK OFF. SET BACK TORQUE ON POWER SWIVEL @ 200. STARTED TURNING TO THE LEFT. WORKED PIPE FROM 16K TO 25K. TURNED 4 ROUNDS & JUMPED @ 17K SW BUT SW IS @ 8K AFTER. GOT ORDERS TO TOO H & SEE WHERE PIPE BROKE. RACK BACK SWIVEL. UN-TIE BACK DRILL LINE. TOO H 35 STDS OF P-110 CS HYD & 1 JT. CHECK PIN ON LAST JT, WHERE IT UNSCREWED @ 2194'. INSPECT PIN & THREADS STILL GOOD. STILL HAVE 9 JTS OF P-110 ON TOP OF BHA @ 2194'. GOT ORDERS TO RUN BACK IN & TRY TO SCREW BACK INTO PIPE. TIH 35 STDS OF P-110 CS HYD, PLUS 2 JTS & TRY TO SCREW BACK ONTO PIPE. TAG @2194' & SCREWED BACK ONTO FISH. PU SWIVEL & ATTEMPT TO REALEASE TOP BHA FROM BOTTOM BHA. WORKED PIPE FROM 20K TO 40K & RELEASED AFTER A FEW ATTEMPTS. LD SWIVEL & TOO H 39 STDS & 1 JT. LD BHA OVER SHOT & GRAPPLE NOT IN BAD CONDITION. MU NEW BHA. 4-11/16" OVERSHOT & EXTENSION W/3-7/16" GR. BUMPER SUB, JARS, 6 COLLARS & INTENSIFIER. XO SUB TO 2-3/8" CS HYD. TOTAL BHA 219'. TIH 37 STDS TO TOP FISH @ 2475'. TIE BACK DRILL LINE. START JARRING OPERATIONS FROM 40K & WORK UP TO 60K. STILL STUCK @ SAME DEPTH. SWIVEL UP & RELEASE FISH. UN-TIE BACK DRILL LINE. TOO H 10 STDS. (WAIT ON ORDERS TO PROCEED. GOT ONE APPROVAL FROM BLM TO START CEMENTING OPS. JUST WAITING ON NMOCD's APPROVAL) SISW. SDFN.

3/2/2024 – CK PRESSURES. SITP = 860 PSI, SICP = 860 PSI, SIICP = 0 PSI, SIBHP = 8 PSI. B/D WELL, 8 MINS. (NMOCD DENIED APPROVAL TO START CEMENTING OPS) SPOT IN PUMP & RIG PIT. RU EQUIPMENT FOR MILLING OPERATIONS. FINISH TOO H WITH 2.375" P-110 & 3 STDS OF COLLARS. LD SELECT BHA. MU 4-3/4" PILOTED PIRANHA MILL, TIH W/COLLARS & 2.375" P-110 TBG TO TOP OF FISH @ 2475'. SWIVEL UP, PUT PUMP ONLINE @ 3 BBLS/MIN @ 260# & START MILLING OPERATIONS. FROM TOP OF FIRST BHA @ 2475'. GETTING STEADY METAL SHAVINGS BACK, AFTER BOTTOMS UP. MILL THROUGH 3' EUE PUP 1 HR, 1.2' CROSSOVER IN 1.5 HRS & NOW MILLING THROUGH WASH OVER PIPE TOTAL 4.5 HRS. SLOW MILLING ONCE TO WASH OVER PIPE. 5' TOTAL FOR THE DAY. CIRC WELL. RACK BACK SWIVEL. LD 1 JT, TOO H 10 STDS OF 2.375" P-110. SISW, DEBRIEF CREW. SDFN.

3/4/2024 – CK PRESSURES. SITP = 660 PSI, SICP = 660 PSI, SIICP = 0 PSI, SIBHP = 8 PSI. B/D WELL, 6 MINS. TIH 10 STDS & 1 JT OF 2.375" P-110 & TAG @ 2480'. SWIVEL UP & PUT PUMP ONLINE @ 3BBLS/MIN W/270#. CONSISTENT METAL COMING BACK, BUT SLOW MILLING THROUGH WASHOVER PIPE. TOTAL OF 2.5' OF MILLING FOR THE DAY. TOTAL FROM START TO FINISH WAS 7.5'/ 2475' TO 2482.5'. **(GOT VERBAL APPROVAL FROM MONICA K. TO SET CICR & START CEMENTING OPERATIONS)** CIRCULATE WELL. RD SWIVEL. LD 55 JTS OF 2.375" P-110 CS HYD. SISW, DEBRIEF CREW. SDFN.

3/5/2024 – CK PRESSURES. SITP = 340 PSI, SICP = 700 PSI, SIICP = 0 PSI, SIBHP = 8 PSI. B/D WELL, 6 MINS. FINISH LD 19 JTS OF 2.375" P-110, LD 6 COLLARS & BHA. MOVE AROUND TRAILORS. SPOT IN 2.375" J55 WORK STRING. RU RIG PUMP. ESTABLISH INJECTION RATE @ 1200 PSI W/1.3 BBLS/MIN. PUMP TOTAL OF 10 BBLS. **WAITING ON ORDERS TO PROCEED FROM NMOCD. GOT APPROVALS.** MU 5.5" CICR. PU 77 JTS OF 2.375" J-55 WORKSTRING. TALLEY, STRAP & RABBIT TBG TO 2430'. SET CICR @ 2430'. WAITING ON CEMENT CREW. HOLD PJSM WITH DRAKE ENERGY. RU CEMENT CREW. PT TEST PUMP & LINES TO 2500 PSI. ESTABLISH ANOTHER INJECTION RATE @ 1275 PSI W/ 1.4 BBLS/MIN. STING OUT PT TO 600 PSI

McDANIEL B 1E

30.045.24435

PLUG & ABANDONMENT

FROM 2430'/CICR TO SURFACE. GOOD PT. STING BACK IN CICR. **PUMP CEMENT PLUG #1 (CICR & DK PERFS)** 800 SXS 163 BBL, 1.15, 15.8#, 5 GAL/SX. TOC @ 2280', BOC @ 2430'. 782 SXS UNDER CICR TO DK PERFS @ 6379', WHICH IS 70% EXCESS. 18 SXS ON TOP OF CICR. DISP. 5.8 BBLS & STING OUT 3 BBLS. LD 5 JTS. TOO H 36 STDS OF 2.375" TBG. WOC PLUG OVERNIGHT. SISW, DEBRIEF CREW. SDFN. **(BLM REP. TYLER OFFERLE ON LOCATION)**

3/6/2024 – CK PRESSURES. SITP = 0 PSI, SICP = 0 PSI, SIICP = 0 PSI, SIBHP = 8 PSI. B/D WELL, 0 MINS. MU TAG SUB, TIH 36 STDS OF 2.375" TBG & TAG CEMENT PLUG # 1 @ 2255'. LD 4 JTS. **PUMP CEMENT PLUG #2 (DV, PC & FRD TOPS)** 87 SXS 17.8 BBL, 1.15, 15.8#, 5 GAL/SX. TOC @ 1429', BOC @ 2176'. DISP. 5.5 BBLS. LD 51 JTS OF 2.375" TBG ONTO TRAILOR. TOO H 9 STDS. WOC COUPLE HRS BEFORE RUNNING CBL FROM TOC TO SURFACE. RU WIRELINE, RIH & TAG TOC @ 1413'. START RUNNING CBL FROM 1413' TO SURFACE. POOH R/D WIRELINE. SISW, DEBRIEF CREW. SDFN. **(BLM REP. TYLER OFFERLE ON LOCATION)**

3/7/2024 – CK PRESSURES. SITP = 0 PSI, SICP = 0 PSI, SIICP = 0 PSI, SIBHP = 4 PSI. B/D WELL, 0 MINS. (WAIT ON APPROVAL TO PROCEED AFTER CHECKING BH PSI) **GOT APPROVAL TO FINISH P&A OPERATIONS ON WELL.** RU WIRELINE, RIH & PERF SQUEEZES HOLES @ 647' (OJO & SURFACE). POOH & RD WIRELINE. LW 3.5 BBLS, PUMP 60/BBLS. INJECTION RATE @ 1.5 BBLS/MIN, 610 PSI DOWN 5.5" CASING UP BH TO SURFACE. MU TAG SUB, TIH 9 STDS & 4 JTS TO 700'. 53' BELOW PERFS @ 647'. ANOTHER INJECTION RATE 1.5 BBLS/MIN @ 605 PSI. **PUMP CEMENT PLUG #3 (OJO & SURFACE)** 252 SXS 51 BBL, 1.15, 15.8#, 5 GAL/SX. TOC @ 0', BOC @ 700'. 81 SXS INSIDE 5.5" & 171 SXS OUTSIDE TO SURFACE. LD 22 JTS OF 2.375" TBG ONTO TRAILER. WOC SURFACE PLUG. WASH OUT BOP OF CEMENT & WASH OUT TBG OF CEMENT. (NOTIFIED NMOCD MONICA KUEHLING AND BLM OF RIG MOVE TOMORROW FROM MCDANIEL B 1E TO NV NAVAVJO 20 #4) RD RIG FLOOR, ND BOP & NU WH. PREP TO CUT OFF WH. CUT OFF WH, (TOC IN 5.5" PROD 64' & 8-5/8" SURFACE 16') WELD ON P&A MARKER, FILL CASING AND CELLAR WITH 42 SXS CEMENT. RIG DOWN RIG AND EQUIPMENT. MOVE RIG TO CCWS YARD TODAY. **(RIG RELEASED @ 17:00 3/7/24). (BLM REP. TYLER OFFERLE ON LOCATION)**

3/8/2024 – (CREW YARD UP @ 5:30 AM) HOLD PJSM FOR RIG MOVE. LOADING EQUIPMENT FOR RIG MOVE ON MCDANIEL B 1E. CHECK P&A MAKER & CEMENT IN CELLAR. NOTICED PEN SIZE HOLE IN CEMENT BY MARKER. HOLE WAS BUBBLING. LET ENGINEER KNOW. PUT RIG MOVE ON HOLD. THEY **CONTACTED BLM & NMOCD OF ISSUE. ORDERED TO MONITOR IT UNTIL MONDAY MORNING AND TO DISCUSS FURTHER STEPS TO TAKE.** CANCELED RIG MOVE TO NEW LOCATION. TURNED AROUND RIG & MOVED IT BACK TO CCWS YARD UNTIL FURTHER NOTICE.

3/11/2024 – TRAVEL TO LOCATION. HILCORP & **NMOCD REP. THOMAS VERMERSCH ON LOCATION.** CHECKED AROUND CELLAR & PEN SIZE HOLE W/FLIR CAMERA. DID NOT PICK UP ANY ANOMALIES. **GOT NMOCD MONICA K. & KENNETH R. APPROVAL TO TOP OFF HOLE WITH CEMENT & MOVE OFF LOCATION. P&A WELL IS COMPLETED.**

Tammy Jones

From: Kuehling, Monica, EMNRD <monica.kuehling@emnrd.nm.gov>
Sent: Monday, March 11, 2024 3:24 PM
To: Rennick, Kenneth G; John LaMond; Kade, Matthew H
Cc: Farmington Regulatory Techs; Brice Clyde - (C); Clay Padgett; Lee Murphy; Max Weaver; Rustin Mikeska; John LaMond
Subject: RE: [EXTERNAL] P&A Revision for Hilcorp's MCDANIEL B 1E (API # 3004524435)

CAUTION: External sender. DO NOT open links or attachments from UNKNOWN senders.

NMOCD approves below

Thank you

Monica Kuehling
Compliance Officer Supervisor
Deputy Oil and Gas Inspector
New Mexico Oil Conservation Division
North District
Office Phone: 505-334-6178 ext. 123
Cell Phone: 505-320-0243
Email - monica.kuehling@emnrd.nm.gov

From: Rennick, Kenneth G <krennick@blm.gov>
Sent: Monday, March 11, 2024 7:55 AM
To: John LaMond <jlamond@hilcorp.com>; Kuehling, Monica, EMNRD <monica.kuehling@emnrd.nm.gov>; Kade, Matthew H <mkade@blm.gov>
Cc: Farmington Regulatory Techs <FarmingtonRegulatoryTechs@hilcorp.com>; Brice Clyde - (C) <Brice.Clyde@hilcorp.com>; Clay Padgett <cpadgett@hilcorp.com>; Lee Murphy <lmurphy@hilcorp.com>; Max Weaver <mweaver@hilcorp.com>; Rustin Mikeska <rmikeska@hilcorp.com>; John LaMond <jlamond@hilcorp.com>
Subject: Re: [EXTERNAL] P&A Revision for Hilcorp's MCDANIEL B 1E (API # 3004524435)

To confirm, the BLM finds the procedure appropriate.

Please include this email conversation in the subsequent report of the work completed.

Get [Outlook for iOS](#)

From: John LaMond <jlamond@hilcorp.com>
Sent: Monday, March 11, 2024 7:47:14 AM
To: Kuehling, Monica, EMNRD <monica.kuehling@emnrd.nm.gov>; Rennick, Kenneth G <krennick@blm.gov>; Kade, Matthew H <mkade@blm.gov>
Cc: Farmington Regulatory Techs <FarmingtonRegulatoryTechs@hilcorp.com>; Brice Clyde - (C) <Brice.Clyde@hilcorp.com>; Clay Padgett <cpadgett@hilcorp.com>; Lee Murphy <lmurphy@hilcorp.com>; Max Weaver <mweaver@hilcorp.com>; Rustin Mikeska <rmikeska@hilcorp.com>; John LaMond <jlamond@hilcorp.com>
Subject: RE: [EXTERNAL] P&A Revision for Hilcorp's MCDANIEL B 1E (API # 3004524435)

Good morning Kenny and Monica,

As discussed in our conversations on Friday, we discovered a pen-hole sized hole in the cement by the P&A marker on the McDaniel B 1E on Friday morning. We then filled the hole with a 1/4 cup of water, and the hole proceeded to start slightly bubbling. At the time of this discovery the surface plug cement had been curing for less than 24 hours. After conversations with both the BLM & NMOCD, it was decided to wait over the weekend, monitor the situation, and meet on location Monday morning (3/11/2024) to see if the problem persisted.

This morning (3/11/2024), Hilcorp & NMOCD arrived on location to find that the hole had stopped bubbling. Additionally, a FLIR camera was used and did not pick up any anomalies around the hole. Hilcorp received verbal approval from both the NMOCD & BLM that the McDaniel B 1E is properly P&A'd, and we are good to move off of location.

One final step that Hilcorp plans to execute is to fill a 5 gallon bucket of cement and fill the aforementioned hole with that cement.

Please let me know if you have any questions or concerns.

Thanks,

John LaMond

Operations Engineer – Technical Services

Hilcorp Energy Company

1111 Travis

Houston, TX 77002

346-237-2210 (Office)

832-754-9692 (Cell)

jlamond@hilcorp.com

From: Kuehling, Monica, EMNRD <monica.kuehling@emnrd.nm.gov>

Sent: Thursday, March 7, 2024 7:54 AM

To: John LaMond <jlamond@hilcorp.com>; Rennick, Kenneth G <krennick@blm.gov>; Kade, Matthew H <mkade@blm.gov>

Cc: Farmington Regulatory Techs <FarmingtonRegulatoryTechs@hilcorp.com>; Brice Clyde - (C) <Brice.Clyde@hilcorp.com>; Clay Padgett <cpadgett@hilcorp.com>; Lee Murphy <lmurphy@hilcorp.com>; Max Weaver <mweaver@hilcorp.com>; Rustin Mikeska <rmikeska@hilcorp.com>

Subject: RE: [EXTERNAL] P&A Revision for Hilcorp's MCDANIEL B 1E (API # 3004524435)

CAUTION: External sender. DO NOT open links or attachments from UNKNOWN senders.

Thank you and yes you have approval to continue on

Monica Kuehling

Compliance Officer Supervisor

Deputy Oil and Gas Inspector

New Mexico Oil Conservation Division

North District

Office Phone: 505-334-6178 ext. 123

Cell Phone: 505-320-0243

Email - monica.kuehling@emnrd.nm.gov

From: John LaMond <jlamond@hilcorp.com>

Sent: Thursday, March 7, 2024 6:47 AM

To: Rennick, Kenneth G <krennick@blm.gov>; Kade, Matthew H <mkade@blm.gov>; Kuehling, Monica, EMNRD <monica.kuehling@emnrd.nm.gov>

Cc: Farmington Regulatory Techs <FarmingtonRegulatoryTechs@hilcorp.com>; Brice Clyde - (C) <Brice.Clyde@hilcorp.com>; Clay Padgett <cpadgett@hilcorp.com>; Lee Murphy <lmurphy@hilcorp.com>; Max Weaver <mweaver@hilcorp.com>; Rustin Mikeska <rmikeska@hilcorp.com>; John LaMond <jlamond@hilcorp.com>

Subject: RE: [EXTERNAL] P&A Revision for Hilcorp's MCDANIEL B 1E (API # 3004524435)

Good morning Monica,

The BH pressure reading was ~4 psi on the McDaniel B 1E this morning (3/7/2024).

Do we have approval to proceed with the operations outlined below?

Thanks,

John LaMond

Operations Engineer – Technical Services

Hilcorp Energy Company

1111 Travis

Houston, TX 77002

346-237-2210 (Office)

832-754-9692 (Cell)

jlamond@hilcorp.com

From: Rennick, Kenneth G <krennick@blm.gov>

Sent: Wednesday, March 6, 2024 3:45 PM

To: John LaMond <jlamond@hilcorp.com>; Kade, Matthew H <mkade@blm.gov>; Kuehling, Monica, EMNRD <monica.kuehling@emnrd.nm.gov>

Cc: Farmington Regulatory Techs <FarmingtonRegulatoryTechs@hilcorp.com>; Brice Clyde - (C) <Brice.Clyde@hilcorp.com>; Clay Padgett <cpadgett@hilcorp.com>; Lee Murphy <lmurphy@hilcorp.com>; Max Weaver <mweaver@hilcorp.com>; Rustin Mikeska <rmikeska@hilcorp.com>

Subject: Re: [EXTERNAL] P&A Revision for Hilcorp's MCDANIEL B 1E (API # 3004524435)

CAUTION: External sender. DO NOT open links or attachments from UNKNOWN senders.

To confirm, the BLM finds the proposal appropriate.

Kenneth (Kenny) Rennick

Petroleum Engineer

Bureau of Land Management

Farmington Field Office

6251 College Blvd

Farmington, NM 87402

Email: krennick@blm.gov

Mobile & Text: 505.497.0019

From: John LaMond <jlamond@hilcorp.com>

Sent: Wednesday, March 6, 2024 1:28 PM

To: Kade, Matthew H <mkade@blm.gov>; Kuehling, Monica, EMNRD <monica.kuehling@emnrd.nm.gov>; Rennick, Kenneth G <krennick@blm.gov>

Cc: Farmington Regulatory Techs <FarmingtonRegulatoryTechs@hilcorp.com>; Brice Clyde - (C) <Brice.Clyde@hilcorp.com>; Clay Padgett <cpadgett@hilcorp.com>; Lee Murphy <lmurphy@hilcorp.com>; Max Weaver <mweaver@hilcorp.com>; Rustin Mikeska <rmikeska@hilcorp.com>; John LaMond <jlamond@hilcorp.com>

Subject: RE: [EXTERNAL] P&A Revision for Hilcorp's MCDANIEL B 1E (API # 3004524435)

Good afternoon,

Please find the attached the CBL run 2024-03-06 on the McDaniel B 1E. The CBL shows an estimated TOC @ ~1,284'.

Additionally: BH pressure on morning of 3/6/2024 was 8 psi. A 6 hour build up test was performed, and the BH pressure read 1 psi.

Moving forward, Hilcorp has been provided verbal approval from the NMOCD and BLM for the following:

- Note and report morning BH pressure to NMOCD prior to perforating.
- RIH & perforate @ 647'. Attempt to establish circulation to surface.
- If circulation to surface is successful:
 - Combine PLUG #5 and PLUG #6 as originally approved in the attached NOI. This will now be called "PLUG #3".
 - PLUG #3: 184sx Class G (1.15 yield) – KRD @ 597', OJO @ 465', Surface Shoe @ 235':
 - RIH w/ work string to 697'
 - Circulate 103sx of cement on the outside of the 5.5" casing from the squeeze holes at 647' to surface.
 - Pump an 81 sack inside plug from 697' to surface.
 - Cut wellhead & top off cement as needed.
 - ***Please note that no retainer is set during this process***
- If circulation to surface is UNSUCCESSFUL:
 - Proceed with pumping PLUG #5 and PLUG #6 as separate plugs as originally stated in the approved NOI. No Changes outside of pumping Class G cement as opposed to Class III cement. These plugs will now be called "PLUG #3" and "PLUG #4".

Please let me know if you have any questions.

Thanks,

John LaMond

Operations Engineer – Technical Services

Hilcorp Energy Company

1111 Travis

Houston, TX 77002

346-237-2210 (Office)

832-754-9692 (Cell)

jlamond@hilcorp.com

From: Kade, Matthew H <mkade@blm.gov>

Sent: Tuesday, March 5, 2024 10:44 AM

To: Kuehling, Monica, EMNRD <monica.kuehling@emnrd.nm.gov>; John LaMond <jlamond@hilcorp.com>; Rennick, Kenneth G <krennick@blm.gov>

Cc: Farmington Regulatory Techs <FarmingtonRegulatoryTechs@hilcorp.com>; Brice Clyde - (C) <Brice.Clyde@hilcorp.com>; Clay Padgett <cpadgett@hilcorp.com>; Lee Murphy <lmurphy@hilcorp.com>; Max Weaver <mweaver@hilcorp.com>; Rustin Mikeska <rmikeska@hilcorp.com>

Subject: Re: [EXTERNAL] P&A Revision for Hilcorp's MCDANIEL B 1E (API # 3004524435)

CAUTION: External sender. DO NOT open links or attachments from UNKNOWN senders.

The BLM approves of pumping 70% excess below the retainer.

Matthew Kade

Petroleum Engineer
BLM - Farmington Field Office
6251 College Blvd
Farmington, NM 87402
Office: (505) 564-7736

From: Kuehling, Monica, EMNRD <monica.kuehling@emnrd.nm.gov>

Sent: Tuesday, March 5, 2024 9:27 AM

To: John LaMond <jlamond@hilcorp.com>; Kade, Matthew H <mkade@blm.gov>; Rennick, Kenneth G <krennick@blm.gov>

Cc: Farmington Regulatory Techs <FarmingtonRegulatoryTechs@hilcorp.com>; Brice Clyde - (C) <Brice.Clyde@hilcorp.com>; Clay Padgett <cpadgett@hilcorp.com>; Lee Murphy <lmurphy@hilcorp.com>; Max Weaver <mweaver@hilcorp.com>; Rustin Mikeska <rmikeska@hilcorp.com>

Subject: RE: [EXTERNAL] P&A Revision for Hilcorp's MCDANIEL B 1E (API # 3004524435)

NMOCD approves below with prior approval from the BLM

Thank you

Monica Kuehling
Compliance Officer Supervisor
Deputy Oil and Gas Inspector
New Mexico Oil Conservation Division
North District
Office Phone: 505-334-6178 ext. 123
Cell Phone: 505-320-0243
Email - monica.kuehling@emnrd.nm.gov

From: John LaMond <jlamond@hilcorp.com>

Sent: Tuesday, March 5, 2024 9:21 AM

To: Kade, Matthew H <mkade@blm.gov>; Kuehling, Monica, EMNRD <monica.kuehling@emnrd.nm.gov>; Rennick, Kenneth G <krennick@blm.gov>

Cc: Farmington Regulatory Techs <FarmingtonRegulatoryTechs@hilcorp.com>; Brice Clyde - (C) <Brice.Clyde@hilcorp.com>; Clay Padgett <cpadgett@hilcorp.com>; Lee Murphy <lmurphy@hilcorp.com>; Max Weaver <mweaver@hilcorp.com>; Rustin Mikeska <rmikeska@hilcorp.com>

Subject: RE: [EXTERNAL] P&A Revision for Hilcorp's MCDANIEL B 1E (API # 3004524435)

Good morning,

Monica, per our conversation, the NMOCd has provided verbal approval to pump 70% excess beneath the retainer instead of 100%. Casing capacity to bottom DK perf is ~459 sacks Class G. Adding the 323 sacks Class G (70% excess), that results in 782 total sacks being pumped beneath the retainer. We will then pump 18 sacks on top of the retainer for a 150' plug on top of the CICR @ 2,430'.

Additionally, we successfully established an injection rate from surface: 1.3 BPM @ 1200 psi. I will also give you a call to provide this information.

Please let me know if you have any questions.

Thanks,

John LaMond

Operations Engineer – Technical Services
Hilcorp Energy Company
1111 Travis
Houston, TX 77002
346-237-2210 (Office)
832-754-9692 (Cell)
jlamond@hilcorp.com

From: Kade, Matthew H <mkade@blm.gov>

Sent: Tuesday, March 5, 2024 8:13 AM

To: Kuehling, Monica, EMNRD <monica.kuehling@emnrd.nm.gov>; John LaMond <jlamond@hilcorp.com>; Rennick, Kenneth G <krennick@blm.gov>

Cc: Farmington Regulatory Techs <FarmingtonRegulatoryTechs@hilcorp.com>; Brice Clyde - (C) <Brice.Clyde@hilcorp.com>; Clay Padgett <cpadgett@hilcorp.com>; Lee Murphy <lmurphy@hilcorp.com>; Max Weaver <mweaver@hilcorp.com>; Rustin Mikeska <rmikeska@hilcorp.com>

Subject: Re: [EXTERNAL] P&A Revision for Hilcorp's MCDANIEL B 1E (API # 3004524435)

CAUTION: External sender. DO NOT open links or attachments from UNKNOWN senders.

The BLM approves of the proposed changes to the original/updated procedure.

Thanks,

Matthew Kade

Petroleum Engineer
BLM - Farmington Field Office
6251 College Blvd
Farmington, NM 87402
Office: (505) 564-7736

From: Kuehling, Monica, EMNRD <monica.kuehling@emnrd.nm.gov>

Sent: Monday, March 4, 2024 6:27 PM

To: John LaMond <jlamond@hilcorp.com>; Kade, Matthew H <mkade@blm.gov>; Rennick, Kenneth G <krennick@blm.gov>

Cc: Farmington Regulatory Techs <FarmingtonRegulatoryTechs@hilcorp.com>; Brice Clyde - (C) <Brice.Clyde@hilcorp.com>; Clay Padgett <cpadgett@hilcorp.com>; Lee Murphy <lmurphy@hilcorp.com>; Max Weaver <mweaver@hilcorp.com>; Rustin Mikeska <rmikeska@hilcorp.com>; John LaMond <jlamond@hilcorp.com>

Subject: Re: [EXTERNAL] P&A Revision for Hilcorp's MCDANIEL B 1E (API # 3004524435)

Nmocd approves setting cr at 2430 with prior approval from blm

In addition test injection prior to setting retainer - contact this office with results prior to running retainer -if injection run capacity plus 100% all with prior approval from blm
 Keep this office informed on how it goes
 Thank you
 Monica Kuehling
 NMOCD

Get [Outlook for iOS](#)

From: John LaMond <jlamond@hilcorp.com>

Sent: Monday, March 4, 2024 4:37:08 PM

To: Kuehling, Monica, EMNRD <monica.kuehling@emnrd.nm.gov>; Kade, Matthew H <mkade@blm.gov>; Rennick, Kenneth G <kreennick@blm.gov>

Cc: Farmington Regulatory Techs <FarmingtonRegulatoryTechs@hilcorp.com>; Brice Clyde - (C) <Brice.Clyde@hilcorp.com>; Clay Padgett <cpadgett@hilcorp.com>; Lee Murphy <lmurphy@hilcorp.com>; Max Weaver <mweaver@hilcorp.com>; Rustin Mikeska <rmikeska@hilcorp.com>; John LaMond <jlamond@hilcorp.com>

Subject: RE: [EXTERNAL] P&A Revision for Hilcorp's MCDANIEL B 1E (API # 3004524435)

Good afternoon Monica,

Thank you for your time today. Per your request, below is a summary of the work that has been completed on the McDaniel B 1E since Saturday milling operations began:

3/2/2024:

- Milled from 2,475' to 2,480':
 - Milled through 3' 2-3/8" pup joint & 1.21' 3-7/16" sub in 2.5 hrs (4.2' total).
 - Milled through 0.8' of 4-1/2" wash pipe in 4.5 hrs.

3/4/2024:

- Milled from 2,480' to 2,482.5'
 - Milled through 2.5' of 4-1/2" wash pipe in 9 hrs.
 -

In total we drilled 3.3' of wash pipe in 13.5hrs, or ~0.24'/hr of milling.

Given the results from above, Hilcorp was provided verbal approval by the NMOCD for the following adjustments to the approved NOI:

PLUG #1:

- RIH w/ a 5/5" CICR and set the CICR at 2,430'.
- Sting into CICR and establish injection.
- Pump 459sx Class G (1.15 yield) cement beneath the CICR inside the 5.5" casing (Estimated TOC @ 2,430' and estimated BOC @ 6,379'). This will cover cement through the bottom DK perforation at 6,379'.
 - *Please note that Hilcorp will call the NMOCD to discuss the requested excess cement volume on Tuesday morning 3/5/2024 before any cement is pumped.
- Sting out the CICR. Spot an 18 sack Class G (1.15 yield) balanced cement plug (Estimated TOC @ 2,280' and Estimated BOC @ 2,430').

PLUG #2, PLUG #3, and PLUG #4:

- After pumping Plug #1, Hilcorp will then proceed with pumping Plug #4, Plug #5, and Plug #6 as named, outlined, and described in the originally approved NOI. These plugs will be renamed to Plug #2, Plug #3, and Plug #4.

Kenny and Monica, do the BLM and NMOCD approve of the highlighted request above?

Please let me know if you have any questions.

Thanks,

John LaMond

Operations Engineer – Technical Services
Hilcorp Energy Company
1111 Travis
Houston, TX 77002
346-237-2210 (Office)
832-754-9692 (Cell)
jlamond@hilcorp.com

From: Kuehling, Monica, EMNRD <monica.kuehling@emnrd.nm.gov>

Sent: Friday, March 1, 2024 2:06 PM

To: John LaMond <jlamond@hilcorp.com>; Kade, Matthew H <mkade@blm.gov>; Rennick, Kenneth G <krennick@blm.gov>

Cc: Farmington Regulatory Techs <FarmingtonRegulatoryTechs@hilcorp.com>; Brice Clyde - (C) <Brice.Clyde@hilcorp.com>; Clay Padgett <cpadgett@hilcorp.com>; Lee Murphy <lmurphy@hilcorp.com>; Max Weaver <mweaver@hilcorp.com>; Rustin Mikeska <rmikeska@hilcorp.com>

Subject: RE: [EXTERNAL] P&A Revision for Hilcorp's MCDANIEL B 1E (API # 3004524435)

CAUTION: External sender. DO NOT open links or attachments from UNKNOWN senders.

Thank you for update

From: John LaMond <jlamond@hilcorp.com>

Sent: Friday, March 1, 2024 9:09 AM

To: Kuehling, Monica, EMNRD <monica.kuehling@emnrd.nm.gov>; Kade, Matthew H <mkade@blm.gov>; Rennick, Kenneth G <krennick@blm.gov>

Cc: Farmington Regulatory Techs <FarmingtonRegulatoryTechs@hilcorp.com>; Brice Clyde - (C) <Brice.Clyde@hilcorp.com>; Clay Padgett <cpadgett@hilcorp.com>; Lee Murphy <lmurphy@hilcorp.com>; Max Weaver <mweaver@hilcorp.com>; Rustin Mikeska <rmikeska@hilcorp.com>

Subject: RE: [EXTERNAL] P&A Revision for Hilcorp's MCDANIEL B 1E (API # 3004524435)

Monica,

Thank you for taking the time this morning to talk and for passing along Ward's number. I did speak with Ward this morning. Moving forward we will run in hole with a piloted piranha mill and begin to mill. He asked us circle back with the NMOCD after 2 days of milling to review progress and determine next steps.

Please let me know if you have any questions.

Thanks,

John LaMond

Operations Engineer – Technical Services
Hilcorp Energy Company
1111 Travis
Houston, TX 77002
346-237-2210 (Office)
832-754-9692 (Cell)
jlamond@hilcorp.com

From: Kuehling, Monica, EMNRD <monica.kuehling@emnrd.nm.gov>

Sent: Friday, March 1, 2024 8:41 AM

To: Kade, Matthew H <mkade@blm.gov>; John LaMond <jlamond@hilcorp.com>; Rennick, Kenneth G <krennick@blm.gov>

Cc: Farmington Regulatory Techs <FarmingtonRegulatoryTechs@hilcorp.com>; Brice Clyde - (C) <Brice.Clyde@hilcorp.com>; Clay Padgett <cpadgett@hilcorp.com>; Lee Murphy <lmurphy@hilcorp.com>; Max Weaver <mweaver@hilcorp.com>; Rustin Mikeska <rmikeska@hilcorp.com>

Subject: RE: [EXTERNAL] P&A Revision for Hilcorp's MCDANIEL B 1E (API # 3004524435)

CAUTION: External sender. DO NOT open links or attachments from UNKNOWN senders.

Hello all

NMOCD denies below – More work needs to be done. Milling is suggested.

Monica Kuehling
Compliance Officer Supervisor
Deputy Oil and Gas Inspector
New Mexico Oil Conservation Division
North District
Office Phone: 505-334-6178 ext. 123
Cell Phone: 505-320-0243
Email - monica.kuehling@emnrd.nm.gov

From: Kade, Matthew H <mkade@blm.gov>

Sent: Friday, March 1, 2024 7:13 AM

To: John LaMond <jlamond@hilcorp.com>; Rennick, Kenneth G <krennick@blm.gov>; Kuehling, Monica, EMNRD <monica.kuehling@emnrd.nm.gov>

Cc: Farmington Regulatory Techs <FarmingtonRegulatoryTechs@hilcorp.com>; Brice Clyde - (C) <Brice.Clyde@hilcorp.com>; Clay Padgett <cpadgett@hilcorp.com>; Lee Murphy <lmurphy@hilcorp.com>; Max Weaver <mweaver@hilcorp.com>; Rustin Mikeska <rmikeska@hilcorp.com>

Subject: Re: [EXTERNAL] P&A Revision for Hilcorp's MCDANIEL B 1E (API # 3004524435)

The BLM approves of the depth change to the CICR.

Thanks,

Matthew Kade
Petroleum Engineer
BLM - Farmington Field Office
6251 College Blvd
Farmington, NM 87402
Office: (505) 564-7736

From: John LaMond <jlamond@hilcorp.com>

Sent: Friday, March 1, 2024 6:41 AM

To: Rennick, Kenneth G <krennick@blm.gov>; Kuehling, Monica, EMNRD <monica.kuehling@emnrd.nm.gov>; Kade, Matthew H <mkade@blm.gov>

Cc: Farmington Regulatory Techs <FarmingtonRegulatoryTechs@hilcorp.com>; Brice Clyde - (C) <Brice.Clyde@hilcorp.com>; Clay Padgett <cpadgett@hilcorp.com>; Lee Murphy <lmurphy@hilcorp.com>; Max Weaver <mweaver@hilcorp.com>; Rustin Mikeska <rmikeska@hilcorp.com>

Subject: RE: [EXTERNAL] P&A Revision for Hilcorp's MCDANIEL B 1E (API # 3004524435)

Good morning Kenny and Monica,

One slight adjustment to the requested CICR set depth for Plug #1: Hilcorp requests to set the **CICR @ 2,430'** instead of 2,450'. This will insure we are a full casing joint above our Fish Top @ 2,475' and the area where we start to have known casing issues.

Please let me know if you have any questions or concerns with this plan.

Thanks,

John LaMond

Operations Engineer – Technical Services
Hilcorp Energy Company
1111 Travis
Houston, TX 77002
346-237-2210 (Office)
832-754-9692 (Cell)
jlamond@hilcorp.com

From: Rennick, Kenneth G <krennick@blm.gov>

Sent: Thursday, February 29, 2024 8:06 PM

To: John LaMond <jlamond@hilcorp.com>; Kuehling, Monica, EMNRD <monica.kuehling@emnrd.nm.gov>; Kade, Matthew H <mkade@blm.gov>

Cc: Farmington Regulatory Techs <FarmingtonRegulatoryTechs@hilcorp.com>; Brice Clyde - (C) <Brice.Clyde@hilcorp.com>; Clay Padgett <cpadgett@hilcorp.com>; Lee Murphy <lmurphy@hilcorp.com>; Max Weaver <mweaver@hilcorp.com>; Rustin Mikeska <rmikeska@hilcorp.com>

Subject: Re: [EXTERNAL] P&A Revision for Hilcorp's MCDANIEL B 1E (API # 3004524435)

CAUTION: External sender. DO NOT open links or attachments from UNKNOWN senders.

The BLM finds the updated procedure considering possible casing failure appropriate.

Get [Outlook for iOS](#)

From: John LaMond <jlamond@hilcorp.com>

Sent: Thursday, February 29, 2024 4:45:52 PM

To: Kuehling, Monica, EMNRD <monica.kuehling@emnrd.nm.gov>; Rennick, Kenneth G <krennick@blm.gov>; Kade, Matthew H <mkade@blm.gov>

Cc: Farmington Regulatory Techs <FarmingtonRegulatoryTechs@hilcorp.com>; Brice Clyde - (C) <Brice.Clyde@hilcorp.com>; Clay Padgett <cpadgett@hilcorp.com>; Lee Murphy <lmurphy@hilcorp.com>; Max Weaver <mweaver@hilcorp.com>; Rustin Mikeska <rmikeska@hilcorp.com>

Subject: RE: [EXTERNAL] P&A Revision for Hilcorp's MCDANIEL B 1E (API # 3004524435)

Good afternoon Kenny and Monica,

Thank you both for your time on the phone this afternoon. Below summarizes the events that have taken place over the past week on the McDaniel B 1E as well as Hilcorp's requested action plan moving forward:

2/19/2024:

- MIRU slickline to determine tubing condition. Could not RIH w/ 2" pulling tool & 1-3/4" impression block past 2,546'.
- TIH w/ 3-slip stop and not get past 2,479'. Set tubing stop at 2,479'.

2/21/2024:

- MIRU on McDaniel B 1E.
- Pull tubing hanger, string weight @ ~7,000 lbs (Entire string weight supposed to be ~29,800 lbs). Well began flowing steady water at ~6 barrels per hour.
- POOH w/ 2,487' of tubing (tubing parted @ ~2,487'). Recovered the 3 slip stop set at 2,479'. Evidence of severe corrosion at bottom of tubing. ~3,859' of J-55 tubing remaining in the well.



•

2/22/2024:

- TIH w/ overshot & latch onto fish top @ 2,488'. Chase fish top down to 2,522'. Slight change in weight. TOOH w/ 15' 8" of fish. Evidence of severe corrosion.



•

2/23/2024:

- RIH w/ new fishing tools, including 2 full joints of washover pipe in attempt to get a latch onto a good collar. Latch onto collar at ~2,551'.
- Attempt to cut and pull fish: RU wireline and TIH w/ 1" sinker bar, could not get past to 2,548'. Attempt to cut and pull failed.
- Attempt to part 2-3/8" - 4.7# - J-55 fish: Pull to 58,000 lbs. J-55 would not part. Decision made to release overshot to pick up stronger work string. Overshot did NOT release. BHA stuck.

2/26/2024:

- RU Wireline, TIH w/ chemical cutter and cut BHA @ 2,475'. POOH w/ J-55 tubing.
- TIH w/ 2-3/8" P-110 w/ OS and latch onto fish top @ 2,475'. Worked tubing with pull weight from 10,500 lbs to 110,000 lbs. Attempt to part J-55 tubing deeper failed.
- Left tubing in tension overnight at 85,000 lbs.

2/27/2024:

- Release tubing from 85,000 lb tension. No budge.

2/29/2024:

- Attempted to perform blind backoff (left handed turn). No success at releasing J-55 tubing.
- TIH w/ jars & collars. Latch onto fish top @ 2,475'. Attempt to Jar fish free. No success

Given the results from efforts above, Hilcorp believes that there is likely a severe casing failure at ~2,551'. As a result, Hilcorp requests the following adjustments to the approved NOI:

PLUG #1:

- RIH w/ a 5/5" CICR and set the CICR at 2,450'.
- Sting into CICR and establish injection.
- Pump 457sx Class G (1.15 yield) cement beneath the CICR inside the 5.5" casing (Estimated TOC @ 2,450' and estimated BOC @ 6,379'). This will cover cement through the bottom DK perforation at 6,379'.
- Sting out the CICR. Spot an 18 sack Class G (1.15 yield) balanced cement plug (Estimated TOC @ 2,300' and Estimated BOC @ 2,450').

PLUG #2, PLUG #3, and PLUG #4:

- After pumping Plug #1, Hilcorp will then proceed with pumping Plug #4, Plug #5, and Plug #6 as named, outlined, and described in the originally approved NOI. These plugs will be renamed to Plug #2, Plug #3, and Plug #4.

Kenny and Monica, does the BLM and NMOCD approve of the highlighted request above?

Please let me know if you have any questions.

Thanks,

John LaMond

Operations Engineer – Technical Services

Hilcorp Energy Company

1111 Travis

Houston, TX 77002

346-237-2210 (Office)

832-754-9692 (Cell)

jlamond@hilcorp.com

From: Kuehling, Monica, EMNRD <monica.kuehling@emnrd.nm.gov>

Sent: Wednesday, February 21, 2024 7:52 AM

To: Rennick, Kenneth G <krennick@blm.gov>; John LaMond <jlamond@hilcorp.com>; Kade, Matthew H <mkade@blm.gov>

Cc: Farmington Regulatory Techs <FarmingtonRegulatoryTechs@hilcorp.com>; Brice Clyde - (C) <Brice.Clyde@hilcorp.com>; Clay Padgett <cpadgett@hilcorp.com>; Lee Murphy <lmurphy@hilcorp.com>; Max Weaver <mweaver@hilcorp.com>; Rustin Mikeska <rmikeska@hilcorp.com>

Subject: RE: [EXTERNAL] P&A Revision for Hilcorp's MCDANIEL B 1E (API # 3004524435)

CAUTION: External sender. DO NOT open links or attachments from UNKNOWN senders.

NMOCD approves below

Thank you

Monica Kuehling
Compliance Officer Supervisor
Deputy Oil and Gas Inspector
New Mexico Oil Conservation Division
North District
Office Phone: 505-334-6178 ext. 123
Cell Phone: 505-320-0243
Email - monica.kuehling@emnrd.nm.gov

From: Rennick, Kenneth G <krennick@blm.gov>

Sent: Tuesday, February 20, 2024 5:14 PM

To: John LaMond <jlamond@hilcorp.com>; Kuehling, Monica, EMNRD <monica.kuehling@emnrd.nm.gov>; Kade, Matthew H <mkade@blm.gov>

Cc: Farmington Regulatory Techs <FarmingtonRegulatoryTechs@hilcorp.com>; Brice Clyde - (C) <Brice.Clyde@hilcorp.com>; Clay Padgett <cpadgett@hilcorp.com>; Lee Murphy <lmurphy@hilcorp.com>; Max Weaver <mweaver@hilcorp.com>; Rustin Mikeska <rmikeska@hilcorp.com>

Subject: Re: [EXTERNAL] P&A Revision for Hilcorp's MCDANIEL B 1E (API # 3004524435)

To confirm, the BLM finds the proposal appropriate.

Kenneth (Kenny) Rennick

Petroleum Engineer

Bureau of Land Management
Farmington Field Office
6251 College Blvd
Farmington, NM 87402

Email: krennick@blm.gov
Mobile & Text: 505.497.0019

From: John LaMond <jlamond@hilcorp.com>

Sent: Tuesday, February 20, 2024 4:49 PM

To: Kuehling, Monica, EMNRD <monica.kuehling@emnrd.nm.gov>; Rennick, Kenneth G <krennick@blm.gov>; Kade, Matthew H <mkade@blm.gov>

Cc: Farmington Regulatory Techs <FarmingtonRegulatoryTechs@hilcorp.com>; Brice Clyde - (C) <Brice.Clyde@hilcorp.com>; Clay Padgett <cpadgett@hilcorp.com>; John LaMond <jlamond@hilcorp.com>; Lee Murphy <lmurphy@hilcorp.com>; Max Weaver <mweaver@hilcorp.com>; Rustin Mikeska <rmikeska@hilcorp.com>

Subject: [EXTERNAL] P&A Revision for Hilcorp's MCDANIEL B 1E (API # 3004524435)

This email has been received from outside of DOI - Use caution before clicking on links, opening attachments, or responding.

Good afternoon Monica and Kenny,

Hilcorp is planning to move the MCDANIEL B 1E (API # 3004524435) for P&A tomorrow.

- Pressures were checked today (2/20/2024): The bradenhead reads 15 psi and the 5.5" production casing reads 364 psi. We will monitor pressure on the bradenhead and report as we plug up the hole per the approved NOI.

Ahead of moving onto the well, Hilcorp requests the following:

- PLUG#1: (DK PERFS & GALLUP PLUG)
 - The approved NOI states that Hilcorp intends to set a 5.5" CIBP @ 6,208'. We would instead request to set a CICR @ 6,208' and proceed with pumping Plug #1 cement as approved in the NOI.
 - BLM has provided verbal approval for this adjustment.
 - If the pressure test on the 5.5" casing against the CICR @ 6,208' is good before pumping Plug #1, Hilcorp requests to not WOC or tag PLUG #1 after it is pumped.
- Cement for all remaining plugs will be pumped with Class G (1.15 yield) instead of Class III "Select" cement. Please let us know if there are any issues with this.
- PLUG #2: (DV TOOL#1 & MANCOS PLUG)
 - If the pressure test on the 5.5" casing against the CICR @ 6,208' is good before pumping Plug #1, Hilcorp requests to not WOC or tag PLUG #2 after it is pumped.

Please let me know if there is any concern with this plan.

Thanks,

John LaMond

Operations Engineer – Technical Services

Hilcorp Energy Company

1111 Travis

Houston, TX 77002

346-237-2210 (Office)

832-754-9692 (Cell)

jlamond@hilcorp.com

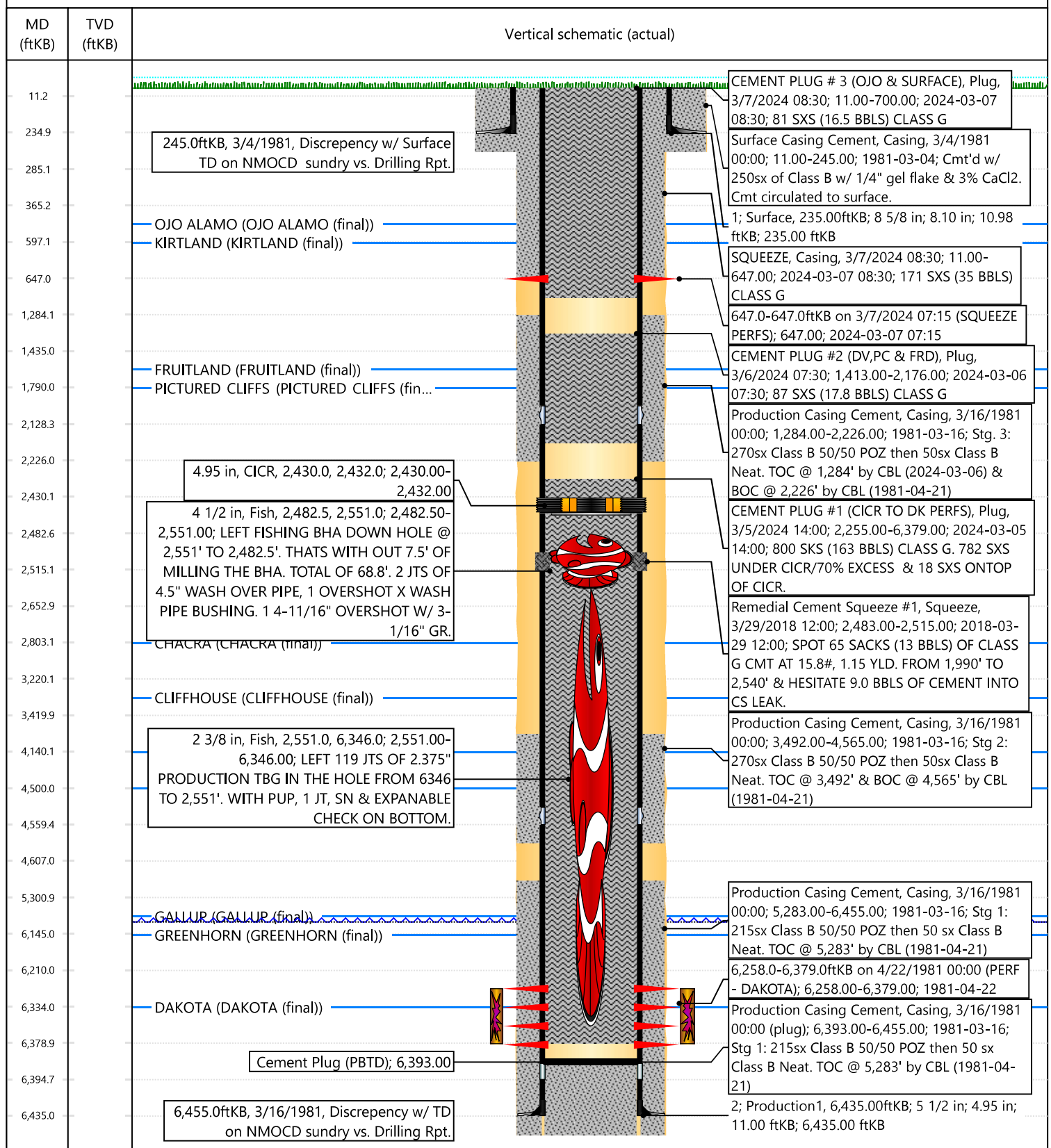


Current Schematic - Version 3

Well Name: MCDANIEL B #1E

API / UWI 3004524435	Surface Legal Location 017-029N-011W-D	Field Name BASIN DAKOTA (PRORATED GAS)	Route 0703	State/Province NEW MEXICO	Well Configuration Type
Ground Elevation (ft) 5,623.00	Original KB/RT Elevation (ft) 5,634.00	RKB to GL (ft) 11.00	KB-Casing Flange Distance (ft)	KB-Tubing Hanger Distance (ft)	

Original Hole



District I
1625 N. French Dr., Hobbs, NM 88240
Phone:(575) 393-6161 Fax:(575) 393-0720

District II
811 S. First St., Artesia, NM 88210
Phone:(575) 748-1283 Fax:(575) 748-9720

District III
1000 Rio Brazos Rd., Aztec, NM 87410
Phone:(505) 334-6178 Fax:(505) 334-6170

District IV
1220 S. St Francis Dr., Santa Fe, NM 87505
Phone:(505) 476-3470 Fax:(505) 476-3462

State of New Mexico
Energy, Minerals and Natural Resources
Oil Conservation Division
1220 S. St Francis Dr.
Santa Fe, NM 87505

CONDITIONS

Action 322491

CONDITIONS

Operator: HILCORP ENERGY COMPANY 1111 Travis Street Houston, TX 77002	OGRID: 372171
	Action Number: 322491
	Action Type: [C-103] Sub. Plugging (C-103P)

CONDITIONS

Created By	Condition	Condition Date
mkuehling	well plugged 3/11/2024	3/28/2024