

Well Name: QUERECHO PLAINS	Well Location: T18S / R32E / SEC 22 / SESW / 32.7277945 / -103.7565047	County or Parish/State: LEA / NM
Well Number: 03	Type of Well: OIL WELL	Allottee or Tribe Name:
Lease Number: NMNM94190	Unit or CA Name:	Unit or CA Number:
US Well Number: 300253672400X1	Well Status: Abandoned	Operator: CHEVRON USA INCORPORATED

For record only Needs like approval from BLM NMOCD 3/27/24 ㄻㄣ

Subsequent Report

Sundry ID: 2775550

Type of Submission: Subsequent Report	Type of Action: Plug and Abandonment
Date Sundry Submitted: 02/17/2024	Time Sundry Submitted: 02:09
Date Operation Actually Began: 01/25/2024	

Actual Procedure: Please see attached As Plugged WBD, plugging summary, and BLM communications.

SR Attachments

Actual Procedure

Querecho\_Plains\_Fed\_Com\_3\_\_\_\_BLM\_SR\_20240217140930.pdf

Received by OCD: 2/29/2024 6:22:24 AM

Page 2 of 9

Well Name: QUERECHO PLAINS	Well Location: T18S / R32E / SEC 22 / SESW / 32.7277945 / -103.7565047	County or Parish/State: LEA / NM
Well Number: 03	Type of Well: OIL WELL	Allottee or Tribe Name:
Lease Number: NMNM94190	Unit or CA Name:	Unit or CA Number:
US Well Number: 300253672400X1	Well Status: Abandoned	Operator: CHEVRON USA INCORPORATED

Operator

I certify that the foregoing is true and correct. Title 18 U.S.C. Section 1001 and Title 43 U.S.C. Section 1212, make it a crime for any person knowingly and willfully to make to any department or agency of the United States any false, fictitious or fraudulent statements or representations as to any matter within its jurisdiction. Electronic submission of Sundry Notices through this system satisfies regulations requiring a

Operator Electronic Signature: MARK TORRES	Signed on: FEB 17, 2024 02:09 PM
Name: CHEVRON USA INCORPORATED	
Title: Well Abandonment Engineer	
Street Address: 6301 DEAUVILLE BLVD	
City: MIDLAND	State: TX
Phone: (989) 264-2525	
Email address: MARKTORRES@CHEVRON.COM	

Field

Representative Name:		
Street Address:		
City:	State:	Zip:
Phone:		
Email address:		

BLM Point of Contact

BLM POC Name: JAMES A AMOS	BLM POC Title: Acting Assistant Field Manager
BLM POC Phone: 5752345927	BLM POC Email Address: jamos@blm.gov
Disposition: Accepted	Disposition Date: 02/28/2024
Signature: James A Amos	



P&A Operations Summary - External

Well Name QUERECHO PLAINS FED COM 003	Field Name Querecho Plains	Lease QUERECHO PLAINS UNIT	Area Central
Business Unit Mid-Continent	County/ Parish Lea	Global Metrics Region Lower 48	Surface UWI 3002536724
Basic Well Data			
Current RKB Elevation	Original RKB Elevation (ft) 3,775.00	Latitude (°) 32° 43' 39.432" N	Longitude (°) 103° 45' 21.996" W
Daily Operations			
Start Date	Summary		
1/25/2024	Move from Saddle back 42-4 to Q plains 3 MI with equipment		
1/26/2024	Held safety meeting, check pressure. Dig out cellar test tubing MIRU rig TOH with rods		
1/29/2024	Held safety meeting, check pressure. TOH with rods ND WH NU BOP test TOH with tubing		
1/30/2024	Held safety meeting, check pressure RUWL set CIBP at 9600' dump bail 4 sacks H cement at 9600'-9565' WOC		
1/31/2024	Held safery meeting, check pressure. RUWL tag TOC at 8560' Set CIBP at 8560' RDWL TIH to 3000'		
2/1/2024	Held safety meeting, check pressure. TIH tag CIBP at 8560' load and test Spot MLF and 30 sacks H cement at 8560'-8288' TOH WOC tag 8326' TOH to 6925'		
2/2/2024	Held safety meeting, check pressure. Pump MLF and 30 sacks of cement at 6925'-6621 TOH Pump MLF and 50 sacks C cement at 4814'-4307' WOC tag TOC at 4328 TOH		
2/5/2024	Held safety meeting, check pressure. MIRU WL perf at 2750 unable to EIR perf at 2650 circlate clean TIH OE to 2800 Pump 132 sacks C cement at 2800-1463' TOH displace cement to 2150'		
2/6/2024	Held safety meeting, check pressure. TIH tag TOC at 2048 TOH RUWL cut casing at 1750' ND BOP ND WH Unable to pull casing NU WH		
2/7/2024	Held safety meeting, check pressure. Stand by for casing jacks		
2/8/2024	Held safety meeting, check pressure. ND WH NU BOP TOH LD casing TIH with scraper to 1750 TOH RUWL log RDWL		
2/9/2024	Held safety meeting, check pressure. TIH Pump 35 sacks C cement at 1800'-1650' TOH WOC tag TOC at 1669' Pump 200 sacks C cement at 1669'-927' TOH RUWL perf at 129' unable to establish circulation.		
2/12/2024	Held safety meeting, Check pressure. TIH tag TOC @ 916'. Pump 50 bbl MLF. L/D 2 7/8" tbg. Perferate @ 100'. Unable to circulate.		
2/13/2024	Held safety meeting, check pressure. RUWL perf at 100' RDWL TIH spot 240 sacks C cement at 917-0 TOH squeeze 185 sacks C cement at 100-0 RD equipment		
2/14/2024	Held safety meeting, check pressure. ND BOP NU WH		

## Querecho Plains Federal Com #003 - As Plugged Wellbore Diagram

Created: 04/11/23	By: GJPU	Well #: 3	Fd./St. #: N/A	KB: 3775.5'
Updated: 04/11/23	By: GJPU	API 30-025-36724	DF:	
Lease: QUERECHO PLAINS FED COM 3		Surface Tshp/Rng: S-18 & E-32	GL: 3,757'	
Field: Querecho Plain		Unit Ltr.: N	Section: 22	Ini. Spud: 06/17/04
Surf. Loc.: 760' FSL & 1,930' FWL		Bottom hole Tshp/Rng:		Ini. Comp.: 08/25/04
Bot. Loc.:		Section:		<b>Base of FW:</b> 450'
County: Lea	St.: NM	Cost Code: UCKY42410	<b>Potash:</b> NO	
Status: Shut-in		Chevron: HP6205		

## Surface Casing

Size: 13 3/8  
Wt., Grd.: 48# H-40  
Depth: 727'  
Sxs Cmt: 600  
Circulate: Yes - 25 bbls  
TOC: Surface  
Hole Size: 17 1/2"

## Intermediate Casing

Size: 8 5/8  
Wt., Grd.: 32# J55  
Depth: 4,500'  
Sxs Cmt: 1,450  
Circulate: Yes - 250 sx  
TOC: Surface  
Hole Size: 11"

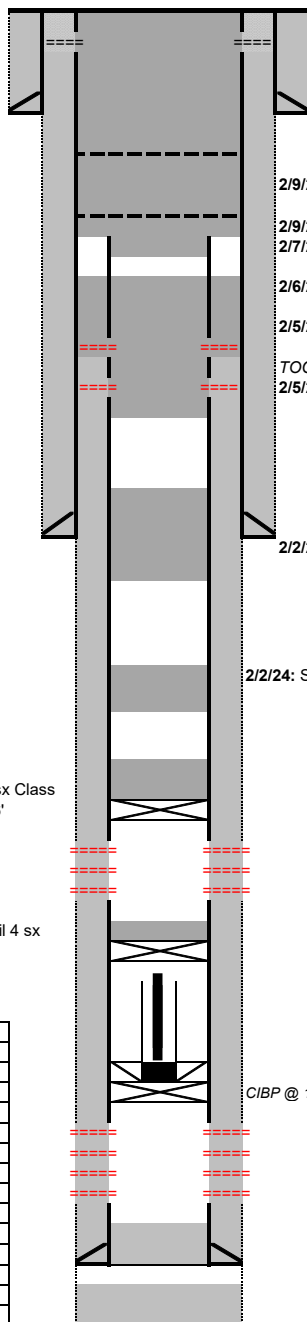
## Production Casing

Size: 5 1/2  
Wt., Grd.: 17# N80  
Depth: 10,820'  
Sxs Cmt: 1,120  
Circulate: No  
TOC: 2,700' via CBL 8/9/04  
Hole Size: 7-7/8"  
DV Tool: N/A

1/31/24: Set CIBP @ 8,560'; spot 30 sx Class H f/ 8,560' - 8,288'. WOC/tag @ 8,326'

1/30/24: Set CIBP @ 9,600'; dump bail 4 sx Class H to 9,565'

Formation	Top (MD)
Rustler	1,100'
Salt Top	1,427'
Salt Bottom	2,482'
Yates	2,700'
Seven Rivers	3,069'
Queen	3,860'
Grayburg	4,330'
Delaware	4,764'
Top of Bone Spring	6,875'
1st Bone Spring	8,330'
2nd Bone Spring	9,010'
3rd Bone Spring	9,885'
Wolfcamp	10,186'
Strawn	11,540'



2/13/24: Spot 240 sx Class C f/ 916' - 0' and squeeze additional 185 sx  
2/13/24: Perf @ 129, 124', 100', 100' (unable to establish circ), only injection - communicate w/ Long Vo BLM

2/9/24: Spot 200 sx Class C f/ 1,669' - 927'; tag plug @ 916'

2/9/24: Spot 35 sx Class C f/ 1,800' - 1,650'; WOC& tag plug @ 1,669'  
2/7/24: Cut/pull 5-1/2" prod csg f/ 1,750'; perform CBL on 8-5/8"

2/6/24: Tag Cement @ 2,048'

2/5/24: Perf @ 2,650' and est circulation to surface. Spot 132 sx Class C f/ 2,800' - 1,463'; TOH and displace to 2,150'

TOC @ 2,700' per well records

2/5/24: Perf @ 2,750' and unable to establish circulation

H2S Concentration >100 PPM? NO  
NORM Present in Area? YES

2/2/24: Spot 50 sx Class C f/ 4,814' - 4,307'; WOC/tag plug @ 4,328'

2/2/24: Spot 30 sx Class C f/ 6,925' - 6,621'

## Bone Spring Perforations

8,660'-8,687'	2SPF, .43" holes	Acidize w/ 2,500 gals acid + BS. (8,660' to 8,687')
8,801'-8,818'	2SPF, .43" holes	Acidize w/ 4,000 gals acid + BS. (8,801' to 8,842')
8,836'-8,842'	2SPF, .43" holes	

## Top of Fish @ 9,788' (2/23/2005)

Tubing Components				Rod Components			
Item Des	Jts	OD (in)	Len (ft)	Item Des	Jts	OD (in)	Len (ft)
Tubing	21	2 7/8	661.5	Sinker Bars	18	1 1/2	450
Seat Nipple	1	2 7/8		Pump	1	1 1/2	30
Slotted Joint	1	2 7/8	4				
TAC	1	2 7/8	3				

CIBP @ 10,495'

## Wolfcamp Perforations

10,556' to 10,558'	2SPF, .43" holes	Acidize w/ 4,000 gals acid + BS. (10,556' to 10,604')
10,567' to 10,569'	2SPF, .43" holes	
10,587' to 10,589'	2SPF, .43" holes	
10,601' to 10,604'	2SPF, .43" holes	

PBTD: 10,685'  
PC Shoe @ 10,820'

Cement 11,300' to 11,540'  
TD: 11,900'

**From:** [Vo, Long T](#)  
**To:** [Torres, Mark](#)  
**Cc:** [Savala, Jorge \[Airsift\]](#)  
**Subject:** [\*\*EXTERNAL\*\*] Re: [EXTERNAL] Querecho Plains Fed Com 3 - Operational Update  
**Date:** Tuesday, February 13, 2024 1:05:15 PM  
**Attachments:** [image001.png](#)

---

**Be aware this external email contains an attachment and/or link.**

Ensure the email and contents are expected. If there are concerns, please submit suspicious messages to the Cyber Intelligence Center using the Report Phishing button.

Mark,

You are approved to proceed with the balance plug from 916' to surface. After TOH you can top off down the annulus with a 1" if you cannot squeeze down the annulus.

Regards,

Long Vo, EIT, M.Sc.

Petroleum Engineer SME  
Carlsbad Field Office  
Land and Minerals  
Bureau of Land Management  
Department of Interior  
575-988-5402 Cell

---

**From:** Torres, Mark <MarkTorres@chevron.com>  
**Sent:** Tuesday, February 13, 2024 12:08 PM  
**To:** Vo, Long T <lvo@blm.gov>  
**Cc:** Savala, Jorge [Airsift] <jorgesavala@chevron.com>  
**Subject:** RE: [EXTERNAL] Querecho Plains Fed Com 3 - Operational Update

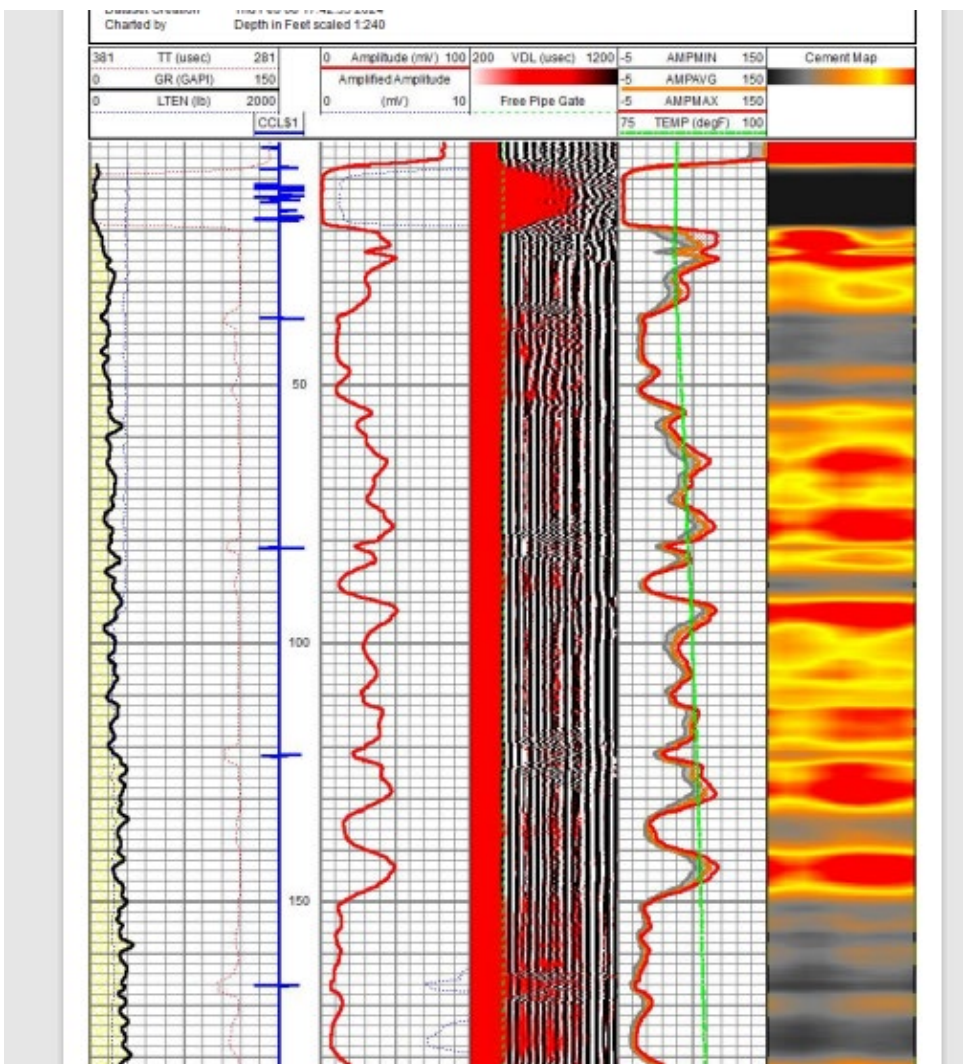
Hey Long,

Update on progress on this well:

- We have cut/pulled the 5-1/2" production casing from 1,750'
- Spotted a stub plug from 1,800' – 1,650' (WOC & tagged at 1,669')
- Spotted a plug from 1,669' – 927' (WOC & tagged at 916')
- Ran a CBL on the 8-5/8" confirming solid cement in annulus up to approx. 150'
- Perforated the 8-5/8" at 129', 124', and 100' (twice) and have been unable to establish circulation up the annulus to surface. It is currently injecting at 1 bpm and 900 psi

We propose the following:

- TIH to 916' and circulate cement to surface (calculated 240 sx Class C)
- TOH and down squeeze the remaining cement on location (110 additional sx Class C) leaving cement at surface



Thanks,

Mark

**From:** Vo, Long T <lvo@blm.gov>

**Sent:** Monday, February 5, 2024 1:47 PM

**To:** Torres, Mark <MarkTorres@chevron.com>

**Cc:** Savala, Jorge [Airsift] <jorgesavala@chevron.com>

**Subject:** **[\*\*EXTERNAL\*\*]** Re: [EXTERNAL] Querecho Plains Fed Com 3 - Operational Update

Mark,

You are approved with the proposed plan.

Regards,

Long Vo, EIT, M.Sc.

Petroleum Engineer SME  
Carlsbad Field Office  
Land and Minerals  
Bureau of Land Management  
Department of Interior  
575-988-5402 Cell

---

**From:** Torres, Mark <[MarkTorres@chevron.com](mailto:MarkTorres@chevron.com)>  
**Sent:** Monday, February 5, 2024 11:28 AM  
**To:** Vo, Long T <[lvo@blm.gov](mailto:lvo@blm.gov)>  
**Cc:** Savala, Jorge [Airsift] <[jorgesavala@chevron.com](mailto:jorgesavala@chevron.com)>  
**Subject:** [EXTERNAL] Querecho Plains Fed Com 3 - Operational Update

**This email has been received from outside of DOI - Use caution before clicking on links, opening attachments, or responding.**

Long,

Following up on our conversation to update the team. Forward plan on the Querecho Plains Fed Com 3 P&A.

1. Perf the 5-1/2" again at 2,650' and attempt to establish circulation to surface.
2. If we can circulate, we will spot 15 sx Class C f/ 2,800' (50' below perfs at 2,750') up to 2,650' as a balanced plug inside the 5-1/2" followed by circulating 117 sx Class C in place from 2,650' – 2,150'.
3. If we cannot circulate, we will stop and perform a CBL to identify the true TOC behind the 5-1/2"

Thanks,

**Mark Torres**  
Well Abandonment Engineer

**Chevron North America Exploration and Production**  
Mid-Continent Business Unit  
6301 Deauville Blvd  
Midland, TX 79706  
Mobile: 989.264.2525  
[marktorres@chevron.com](mailto:marktorres@chevron.com)



**District I**  
1625 N. French Dr., Hobbs, NM 88240  
Phone:(575) 393-6161 Fax:(575) 393-0720  
**District II**  
811 S. First St., Artesia, NM 88210  
Phone:(575) 748-1283 Fax:(575) 748-9720  
**District III**  
1000 Rio Brazos Rd., Aztec, NM 87410  
Phone:(505) 334-6178 Fax:(505) 334-6170  
**District IV**  
1220 S. St Francis Dr., Santa Fe, NM 87505  
Phone:(505) 476-3470 Fax:(505) 476-3462

State of New Mexico  
Energy, Minerals and Natural Resources  
Oil Conservation Division  
1220 S. St Francis Dr.  
Santa Fe, NM 87505

COMMENTS  
  
Action 318770

COMMENTS

Operator: CHEVRON U S A INC 6301 Deauville Blvd Midland, TX 79706	OGRID: 4323
	Action Number: 318770
	Action Type: [C-103] Sub. Plugging (C-103P)

COMMENTS

Created By	Comment	Comment Date
plmartinez	DATA ENTRY PM.	4/1/2024



**District I**  
1625 N. French Dr., Hobbs, NM 88240  
Phone:(575) 393-6161 Fax:(575) 393-0720

**District II**  
811 S. First St., Artesia, NM 88210  
Phone:(575) 748-1283 Fax:(575) 748-9720

**District III**  
1000 Rio Brazos Rd., Aztec, NM 87410  
Phone:(505) 334-6178 Fax:(505) 334-6170

**District IV**  
1220 S. St Francis Dr., Santa Fe, NM 87505  
Phone:(505) 476-3470 Fax:(505) 476-3462

State of New Mexico  
Energy, Minerals and Natural Resources  
Oil Conservation Division  
1220 S. St Francis Dr.  
Santa Fe, NM 87505

CONDITIONS

Action 318770

CONDITIONS

Operator: CHEVRON U S A INC 6301 Deauville Blvd Midland, TX 79706	OGRID: 4323
	Action Number: 318770
	Action Type: [C-103] Sub. Plugging (C-103P)

CONDITIONS

Created By	Condition	Condition Date
kfortner	Like approval from BLM	3/27/2024