

Well Name: NAVAJO 13	Well Location: T29N / R14W / SEC 13 / NENE / 36.730217 / -108.256611	County or Parish/State: SAN JUAN / NM
Well Number: 1	Type of Well: OTHER	Allottee or Tribe Name: SHIPROCK
Lease Number: 14206032198	Unit or CA Name: 1 NAVAJO 13 - FRCL	Unit or CA Number: NMNM108235
US Well Number: 3004530652	Well Status: Abandoned	Operator: HILCORP ENERGY COMPANY

Subsequent Report

Sundry ID: 2781983

Type of Submission: Subsequent Report	Type of Action: Plug and Abandonment
Date Sundry Submitted: 03/27/2024	Time Sundry Submitted: 12:52
Date Operation Actually Began: 03/26/2024	

Actual Procedure: Hilcorp Energy Company plugged and abandoned the subject well on 3/26/2024 per the attached report.

SR Attachments

Actual Procedure

naVAJO_13_1_PA_Subsequent_20240327125101.pdf

HILCORP_NAVAJO_13_1_CBL_20240327125050.pdf

Received by OCD: 3/27/2024 1:42:51 PM

Page 2 of 9

Well Name: NAVAJO 13	Well Location: T29N / R14W / SEC 13 / NENE / 36.730217 / -108.256611	County or Parish/State: SAN JUAN / NM
Well Number: 1	Type of Well: OTHER	Allottee or Tribe Name: SHIPROCK
Lease Number: 14206032198	Unit or CA Name: 1 NAVAJO 13 - FRCL	Unit or CA Number: NMNM108235
US Well Number: 3004530652	Well Status: Abandoned	Operator: HILCORP ENERGY COMPANY

Operator

I certify that the foregoing is true and correct. Title 18 U.S.C. Section 1001 and Title 43 U.S.C. Section 1212, make it a crime for any person knowingly and willfully to make to any department or agency of the United States any false, fictitious or fraudulent statements or representations as to any matter within its jurisdiction. Electronic submission of Sundry Notices through this system satisfies regulations requiring a

Operator Electronic Signature: TAMMY JONES	Signed on: MAR 27, 2024 12:51 PM
Name: HILCORP ENERGY COMPANY	
Title: Regulatory Compliance Specialist	
Street Address: 382 ROAD 3100	
City: AZTEC	State: NM
Phone: (505) 324-5185	
Email address: TAJONES@HILCORP.COM	

Field

Representative Name:		
Street Address:		
City:	State:	Zip:
Phone:		
Email address:		

BLM Point of Contact

BLM POC Name: MATTHEW H KADE	BLM POC Title: Petroleum Engineer
BLM POC Phone: 5055647736	BLM POC Email Address: MKADE@BLM.GOV
Disposition: Accepted	Disposition Date: 03/27/2024
Signature: Matthew Kade	

NAVAJO 13 1

30.045.30652

PLUG & ABANDONMENT

3/26/2024 – MIRU. CK PRESSURES. SITP = 50 PSI, SICP = 50 PSI, SIICP = N/A, SIBHP = 0 PSI. B/D WELL, 2 MINS. LD POLISH ROD. 1 JT OF 5/8" SUB, LD 35 5/8" RODS, 2 SINKER BARS & PUMP ONTO TRAILOR. ND WH. NU BOP, PRESSURE TEST & FUNCTION TEST BOP'S. RU RIG FLOOR. PULL TBG HANGER @ 4.5K SW. LD 28 JTS OF 2.375" PROD. TBG & TBG BHA ONTO TRAILER. MOVE AROUND TRAILERS. SPOT IN WORK STRING. MU 4.5" CICR RIH TO 732'. TALLEY, STRAP & RABBIT TBG. SET CICR @ 732'. WAITING ON CEMENT TRUCK TO BE FIXED. RU CEMENTERS, PT PUMP & LINES. LD TBG W/3 BBLS. INJECTION RATE UNDER CICR @ 1.7 BBL/MIN W/75 PSI. **PUMP CEMENT PLUG #1A UNDER CICR (PC & FRD PERFS)** 28 SXS 5.7 BBLS, 1.15, 15.8#, 5 GAL/SX. TOC @ 732', BOC @ 908'. STING OUT. LW W/8 BBLS & PUMP 13 BBLS. PT TO 610 PSI & PASSED. BLM REP. GOOD W/TEST. TOO H 11 STD OF 2.375" TBG. LD STINGER. RU WIRELINE, RUN CBL FROM 732' TO SURFACE. POOH R/D WIRELINE. TIH 11 STDs OF 2.375" TBG TO 732'. RU CEMENTERS. **PUMP CEMENT PLUG #1B (FRD TOP & CICR)** 19 SXS 3.8 BBLS, 1.15, 15.8#, 5 GAL/SX. TOC @ 490', BOC @ 732'. LD 18 JTS. **PUMP CEMENT PLUG #2 (SURFACE)** 14 SXS 2.8 BBLS, 1.15, 15.8#, 5 GAL/SX. TOC @ 0', BOC @ 170'. LD 5 JTS. WASH OUT BOP OF CEMENT & WASH OUT TBG OF CEMENT. (NOTIFIED NMOCD MONICA KUEHLING AND BLM OF RIG MOVE TOMORROW MORNING FROM NAVAJO 13 #1 TO NV NAVAJO 13 #4) RD RIG FLOOR. ND BOP & NU WH. CUT OFF WH (TOC IN 4.5" PROD 70' & 7" SURFACE 15') WELD ON P&A MARKER. RU 1" POLY LINE, RUN IN 4.5" CASING. FILL CASING AND CELLAR WITH 30 SXS CEMENT. RIG DOWN RIG AND EQUIPMENT. **(RIG RELEASED @ 19:30PM 3/26/24)**

(BLM REP. VALJEAN UENTILLIE ON LOCATION)

Tammy Jones

From: Kuehling, Monica, EMNRD <monica.kuehling@emnrd.nm.gov>
Sent: Tuesday, March 26, 2024 4:15 PM
To: Rennick, Kenneth G; John LaMond; Kade, Matthew H
Cc: Farmington Regulatory Techs; Brice Clyde - (C); Clay Padgett; Lee Murphy; Max Weaver; Rustin Mikeska
Subject: RE: [EXTERNAL] P&A Revision for Hilcorp's NAVAJO 13 1 (API # 3004530652)

CAUTION: External sender. DO NOT open links or attachments from UNKNOWN senders.

NMOCD approves for record only

Thank you

Monica Kuehling
Compliance Officer Supervisor
Deputy Oil and Gas Inspector
New Mexico Oil Conservation Division
North District
Office Phone: 505-334-6178 ext. 123
Cell Phone: 505-320-0243
Email - monica.kuehling@emnrd.nm.gov

From: Rennick, Kenneth G <krennick@blm.gov>
Sent: Tuesday, March 26, 2024 3:30 PM
To: John LaMond <jlamond@hilcorp.com>; Kuehling, Monica, EMNRD <monica.kuehling@emnrd.nm.gov>; Kade, Matthew H <mkade@blm.gov>
Cc: Farmington Regulatory Techs <FarmingtonRegulatoryTechs@hilcorp.com>; Brice Clyde - (C) <Brice.Clyde@hilcorp.com>; Clay Padgett <cpadgett@hilcorp.com>; Lee Murphy <lmurphy@hilcorp.com>; Max Weaver <mweaver@hilcorp.com>; Rustin Mikeska <rmikeska@hilcorp.com>
Subject: Re: [EXTERNAL] P&A Revision for Hilcorp's NAVAJO 13 1 (API # 3004530652)

To confirm, the BLM does not have any issues with the procedure.

Kenneth (Kenny) Rennick

Petroleum Engineer

Bureau of Land Management
Farmington Field Office
6251 College Blvd
Farmington, NM 87402

Email: krennick@blm.gov
Mobile & Text: 505.497.0019

From: John LaMond <jlamond@hilcorp.com>
Sent: Tuesday, March 26, 2024 3:25 PM
To: Rennick, Kenneth G <krennick@blm.gov>; Kuehling, Monica, EMNRD <monica.kuehling@emnrd.nm.gov>; Kade, Matthew H <mkade@blm.gov>
Cc: Farmington Regulatory Techs <FarmingtonRegulatoryTechs@hilcorp.com>; Brice Clyde - (C) <Brice.Clyde@hilcorp.com>; Clay Padgett <cpadgett@hilcorp.com>; Lee Murphy <lmurphy@hilcorp.com>; Max Weaver <mweaver@hilcorp.com>; Rustin Mikeska <rmikeska@hilcorp.com>; John LaMond <jlamond@hilcorp.com>
Subject: RE: [EXTERNAL] P&A Revision for Hilcorp's NAVAJO 13 1 (API # 3004530652)

Good afternoon Kenny & Monica,

Attached is the CBL run this afternoon (3/26/2024). The log shows TOC @ ~24'. Surface casing shoe is at ~120'.

Additionally, the following was performed/discovered:

- Pressure tested the 4.5" casing above the CICR to 560 psi (Good Test).

Hilcorp plans to move forward with the procedure outlined below in this email chain.

Please let us know if you have any issues with this.

Thanks,

John LaMond

Operations Engineer – Technical Services
Hilcorp Energy Company
1111 Travis
Houston, TX 77002
346-237-2210 (Office)
832-754-9692 (Cell)
jlamond@hilcorp.com

From: Rennick, Kenneth G <krennick@blm.gov>
Sent: Monday, March 25, 2024 10:08 AM
To: John LaMond <jlamond@hilcorp.com>; Kuehling, Monica, EMNRD <monica.kuehling@emnrd.nm.gov>; Kade, Matthew H <mkade@blm.gov>
Cc: Farmington Regulatory Techs <FarmingtonRegulatoryTechs@hilcorp.com>; Brice Clyde - (C) <Brice.Clyde@hilcorp.com>; Clay Padgett <cpadgett@hilcorp.com>; Lee Murphy <lmurphy@hilcorp.com>; Max Weaver <mweaver@hilcorp.com>; Rustin Mikeska <rmikeska@hilcorp.com>
Subject: Re: [EXTERNAL] P&A Revision for Hilcorp's NAVAJO 13 1 (API # 3004530652)

CAUTION: External sender. DO NOT open links or attachments from UNKNOWN senders.

To confirm, BLM finds the procedure appropriate.

Kenneth (Kenny) Rennick

Petroleum Engineer

Bureau of Land Management
Farmington Field Office
6251 College Blvd
Farmington, NM 87402

Email: krennick@blm.gov
Mobile & Text: 505.497.0019

From: John LaMond <jlamond@hilcorp.com>

Sent: Monday, March 25, 2024 9:01 AM

To: Kuehling, Monica, EMNRD <monica.kuehling@emnrd.nm.gov>; Rennick, Kenneth G <krennick@blm.gov>; Kade, Matthew H <mkade@blm.gov>

Cc: Farmington Regulatory Techs <FarmingtonRegulatoryTechs@hilcorp.com>; Brice Clyde - (C) <Brice.Clyde@hilcorp.com>; Clay Padgett <cpadgett@hilcorp.com>; Lee Murphy <lmurphy@hilcorp.com>; Max Weaver <mweaver@hilcorp.com>; Rustin Mikeska <rmikeska@hilcorp.com>; John LaMond <jlamond@hilcorp.com>

Subject: [EXTERNAL] P&A Revision for Hilcorp's NAVAJO 13 1 (API # 3004530652)

This email has been received from outside of DOI - Use caution before clicking on links, opening attachments, or responding.

Good morning Kenny and Monica,

Hilcorp is planning to move onto the NAVAJO 13 1 (API # 3004530652) tomorrow (3/26/2024) for P&A.

Moving forward, Hilcorp requests the following adjustments to the approved NOI (attached):

- **For the following plugs, Hilcorp received verbal approval from the BLM to not tag or WOC if the pressure test against the CICR set above the perfs is good.**
- PLUG #1a: 28sx of Class G Cement (15.8 PPG, 1.15 yield); PC Perfs @ 898' | FRD Perfs @ 782':
 - Set 4-1/2" CICR @ 732' per approved NOI. Establish Injection
 - Pump a 28 sack cement plug beneath the 4-1/2" CICR (est. TOC @ +/- 732' & est. BOC @ +/- 908'). ***Please note that we are pumping the cement beneath the retainer prior to pressure testing and running our CBL. Hilcorp received verbal approval from the BLM to perform this operation.***
 - Sting out, reverse circulate
 - Pressure test 4-1/2" casing to 560 psi
 - TOOH w/ work string
- MIRU wireline, Run CBL, report findings prior to proceeding with remaining cement operations.
- PLUG #1b: 19sx of Class G Cement (15.8 PPG, 1.15 yield); FRD Top @ 590':
 - TIH w/ work string
 - Pump a 19 sack balanced cement plug inside the 4-1/2" casing on top of the CICR (est. TOC @ +/- 490' & est. BOC @ +/- 732').
- PLUG #2: 14sx of Class G Cement (15.8 PPG, 1.15 yield); Surf. Casing Shoe @ 120':
 - POOH w/ tubing to 170'
 - Pump a 14 sack balanced cement plug inside the 4-1/2" casing (est. TOC @ +/- 0' & est. BOC @ +/- 170').
 - Top off as needed

- If the initial pressure test against the CICR @ 732' fails, we will combine Plug #1b & Plug #2.

Please let me know if there are any questions or concerns.

Thanks,

John LaMond

Operations Engineer – Technical Services

Hilcorp Energy Company

1111 Travis

Houston, TX 77002

346-237-2210 (Office)

832-754-9692 (Cell)

jlamond@hilcorp.com

The information contained in this email message is confidential and may be legally privileged and is intended only for the use of the individual or entity named above. If you are not an intended recipient or if you have received this message in error, you are hereby notified that any dissemination, distribution, or copy of this email is strictly prohibited. If you have received this email in error, please immediately notify us by return email or telephone if the sender's phone number is listed above, then promptly and permanently delete this message.

While all reasonable care has been taken to avoid the transmission of viruses, it is the responsibility of the recipient to ensure that the onward transmission, opening, or use of this message and any attachments will not adversely affect its systems or data. No responsibility is accepted by the company in this regard and the recipient should carry out such virus and other checks as it considers appropriate.

The information contained in this email message is confidential and may be legally privileged and is intended only for the use of the individual or entity named above. If you are not an intended recipient or if you have received this message in error, you are hereby notified that any dissemination, distribution, or copy of this email is strictly prohibited. If you have received this email in error, please immediately notify us by return email or telephone if the sender's phone number is listed above, then promptly and permanently delete this message.

While all reasonable care has been taken to avoid the transmission of viruses, it is the responsibility of the recipient to ensure that the onward transmission, opening, or use of this message and any attachments will not adversely affect its systems or data. No responsibility is accepted by the company in this regard and the recipient should carry out such virus and other checks as it considers appropriate.

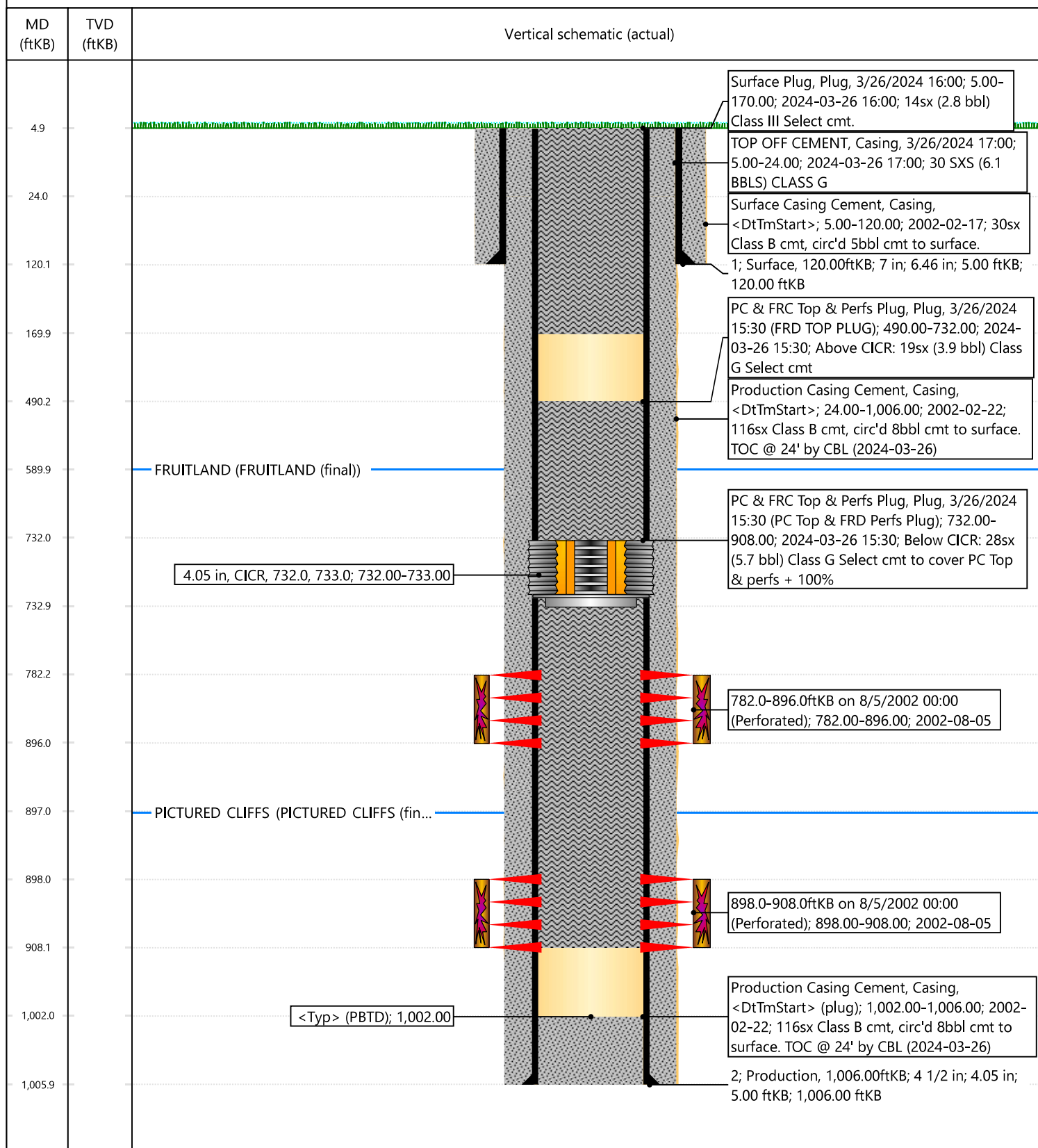


Current Schematic - Version 3

Well Name: NAVAJO 13 #1

API / UWI 3004530652	Surface Legal Location T29N-R14W-S13	Field Name Kutz W Pictured Cliffs	Route 0207	State/Province New Mexico	Well Configuration Type Vertical
Ground Elevation (ft) 5,240.00	Original KB/RT Elevation (ft) 5,245.00	RKB to GL (ft) 5.00	KB-Casing Flange Distance (ft)	KB-Tubing Hanger Distance (ft)	

Original Hole [Vertical]



District I
1625 N. French Dr., Hobbs, NM 88240
Phone:(575) 393-6161 Fax:(575) 393-0720
District II
811 S. First St., Artesia, NM 88210
Phone:(575) 748-1283 Fax:(575) 748-9720
District III
1000 Rio Brazos Rd., Aztec, NM 87410
Phone:(505) 334-6178 Fax:(505) 334-6170
District IV
1220 S. St Francis Dr., Santa Fe, NM 87505
Phone:(505) 476-3470 Fax:(505) 476-3462

State of New Mexico
Energy, Minerals and Natural Resources
Oil Conservation Division
1220 S. St Francis Dr.
Santa Fe, NM 87505

CONDITIONS

Action 327386

CONDITIONS

Operator: HILCORP ENERGY COMPANY 1111 Travis Street Houston, TX 77002	OGRID: 372171
	Action Number: 327386
	Action Type: [C-103] Sub. Plugging (C-103P)

CONDITIONS

Created By	Condition	Condition Date
mkuehling	approved for record - well plugged 3/26/24	3/29/2024