

Office
 District I – (575) 393-6161
 1625 N. French Dr., Hobbs, NM 88240
 District II – (575) 748-1283
 811 S. First St., Artesia, NM 88210
 District III – (505) 334-6178
 1000 Rio Brazos Rd., Aztec, NM 87410
 District IV – (505) 476-3460
 1220 S. St. Francis Dr., Santa Fe, NM
 87505

State of New Mexico
 Energy, Minerals and Natural Resources

Form C-103
 Revised July 18, 2013

OIL CONSERVATION DIVISION
 1220 South St. Francis Dr.
 Santa Fe, NM 87505

WELL API NO.	
Maljamar AGI#1	30-025-40420
Maljamar AGI#2	30-025-42628
5. Indicate Type of Lease STATE <input type="checkbox"/> FEE <input type="checkbox"/> FEDERAL <input checked="" type="checkbox"/>	
6. State Oil & Gas Lease No. NMLC029509A	
7. Lease Name or Unit Agreement Name Maljamar AGI	
8. Well Number	#1 and #2
9. OGRID Number 221115	
10. Pool name or Wildcat AGI: Wolfcamp	

SUNDRY NOTICES AND REPORTS ON WELLS
 (DO NOT USE THIS FORM FOR PROPOSALS TO DRILL OR TO DEEPEN OR PLUG BACK TO A
 DIFFERENT RESERVOIR. USE "APPLICATION FOR PERMIT" (FORM C-101) FOR SUCH
 PROPOSALS.)

1. Type of Well: Oil Well ☐ Gas Well ☐ Other: Acid Gas Injection Well ☒

2. Name of Operator
 Frontier Field Services, LLC

3. Address of Operator 10077 Grogans Mill Rd. Suite 300
 The Woodlands, TX 77380

4. Well Location AGI#1 Unit Letter O : 130 feet from the SOUTH line and 1,813 feet from the EAST line
 AGI#2 Unit Letter O : 400 feet from the SOUTH line and 2,100 feet from the EAST line
 Section 21 Township 17S Range 32E NMPM County Lea

11. Elevation (Show whether DR, RKB, RT, GR, etc.)
 AGI#1 4,016 (GR) AGI#2 4,019 (GR)

12. Check Appropriate Box to Indicate Nature of Notice, Report or Other Data

NOTICE OF INTENTION TO:

PERFORM REMEDIAL WORK ☐ PLUG AND ABANDON ☐
 TEMPORARILY ABANDON ☐ CHANGE PLANS ☐
 PULL OR ALTER CASING ☐ MULTIPLE COMPL ☐
 DOWNHOLE COMMINGLE ☐
 CLOSED-LOOP SYSTEM ☐
 OTHER: ☐

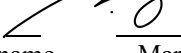
SUBSEQUENT REPORT OF:

REMEDIAL WORK ☐ ALTERING CASING ☐
 COMMENCE DRILLING OPNS. ☐ P AND A ☐
 CASING/CEMENT JOB ☐
 OTHER: 1Q 2024 Report ☒
 per NMOCC Order R-13443

13. Describe proposed or completed operations. (Clearly state all pertinent details, and give pertinent dates, including estimated date of starting any proposed work). SEE RULE 19.15.7.14 NMAC. For Multiple Completions: Attach wellbore diagram of proposed completion or recompletion.

This represents the Q1 2024 report for the AGI#1 and AGI#2 dual well AGI system at Frontier Field Services LLC's Maljamar Gas Processing Plant pursuant to the quarterly reporting required under NMOCC Order R-13443. AGI#2 has bottom-hole PT sensors which provide data on reservoir pressure and temperature that have been performing well and providing good insights into reservoir behavior. This report includes an analysis of the surface and bottom-hole data from AGI#2 and is also the Q1 report for the two well system, as required under the order referenced above.

For Q1 2024, the flow from the plant was sent to both AGI#1 and AGI#2. When both wells are in operation, flow is kept constant at about 1.2 MMSCFD to AGI #2 while allowing AGI #1 to take the fluctuations in overall plant flow (see Figure 1). Average flow rate for the AGI #1 during the entire reporting period was 696 MSCFD. Average flow rate for the AGI #2 for the entire period was 1,226 MSCFD. The surface injection parameters for both wells are shown on Figures 2 and 3, respectively. These two figures show the correlative behavior of injection pressure, injection temperature and annular pressure when both wells are operating and clearly demonstrate the continued integrity of both wells. During the period AGI #1 and AGI #2 showed average injection pressures of 2,294 psig and 2,216 psig, average injection temperatures of 93°F and 100°F and average surface annular pressures of 542 psig and 622 psig, respectively (see Figures 2 and 3). AGI #2 bottom-hole pressure and temperature for the entire period averaged 5,046 psig and 123°F, respectively (see Figure 4). Finally, during the period the differential pressure (surface injection pressure vs. annular pressure) for AGI #1 averaged 1,751 psig, and 1,593 psig for AGI #2 (see Figure 5). The overall period average bottom-hole pressure values of 5,046 psig and temperature of 123°F are reflective of current actual conditions in the reservoir and demonstrate ongoing favorable reservoir conditions. All of the graphs in Figures 1-5 further confirm the continued integrity of both Maljamar AGI#1 and Maljamar AGI#2, and the overall analysis demonstrates that both wells are fully in compliance with all applicable requirements of the NMOCC orders governing operation of this AGI system.

SIGNATURE  TITLE Environmental Manager DATE 4/1/2024
 Type or print name Mary I. Taylor E-mail address: MTaylor@DurangoMidstream.com PHONE: 346-224-2459

For State Use Only

APPROVED

BY: _____ TITLE _____ DATE _____ Conditions _____
 of Approval (if any):

Figure 1: Maljamar AGI #1 and #2 Injection Rates

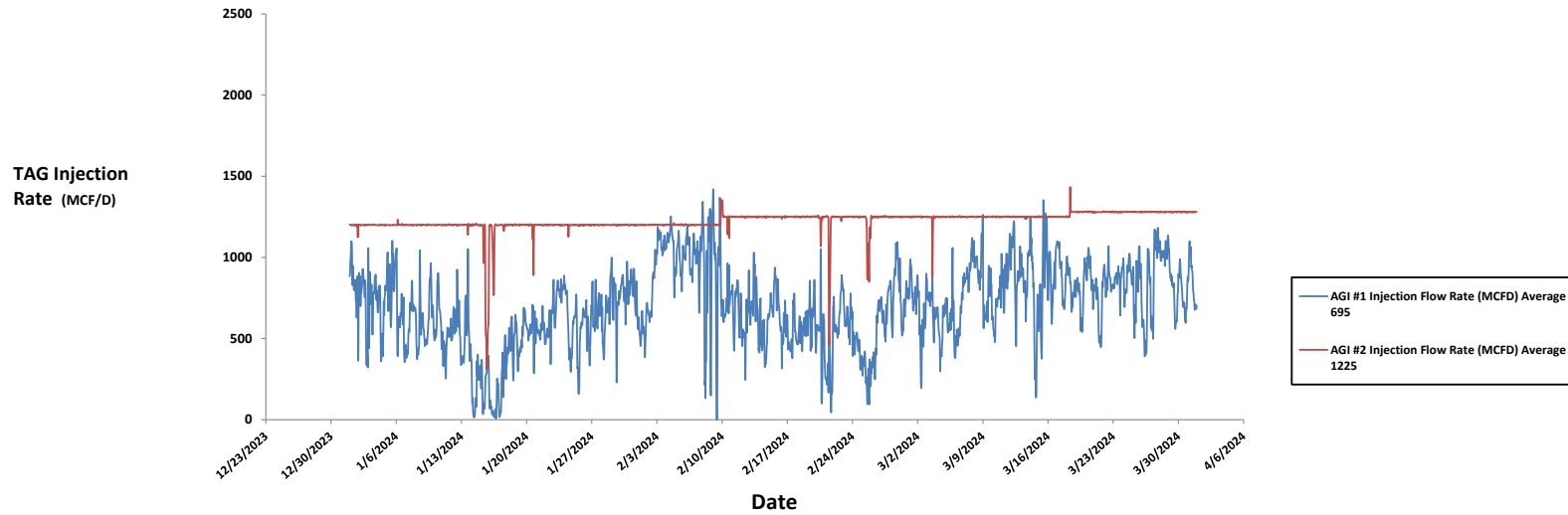


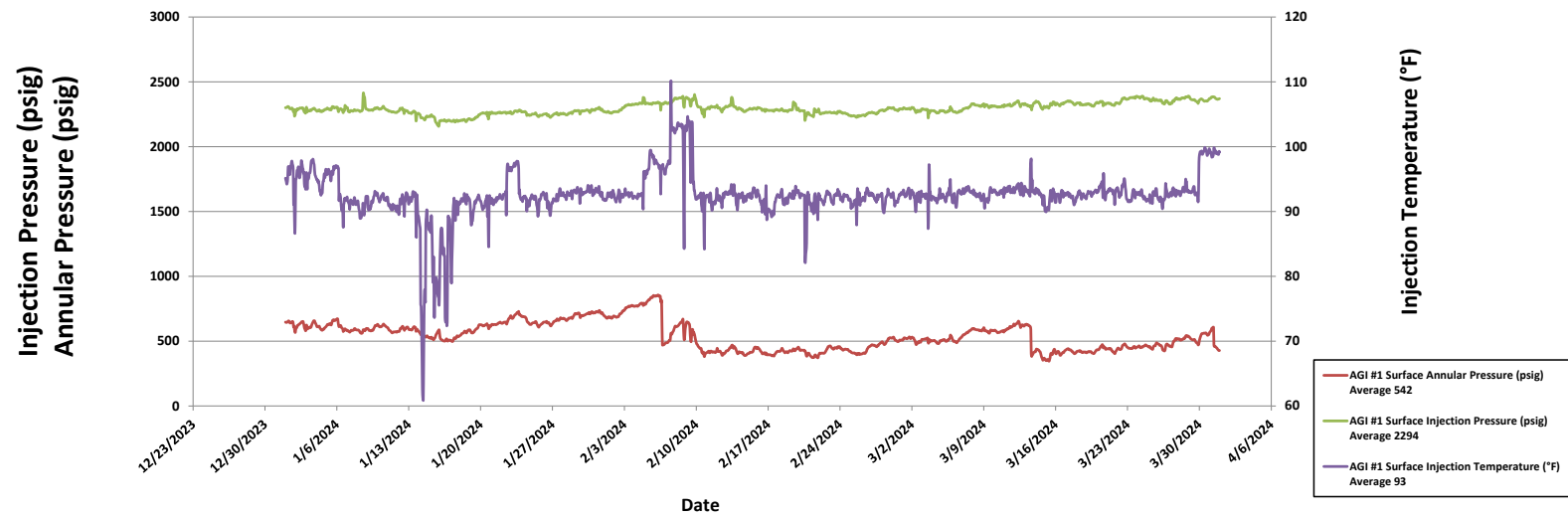
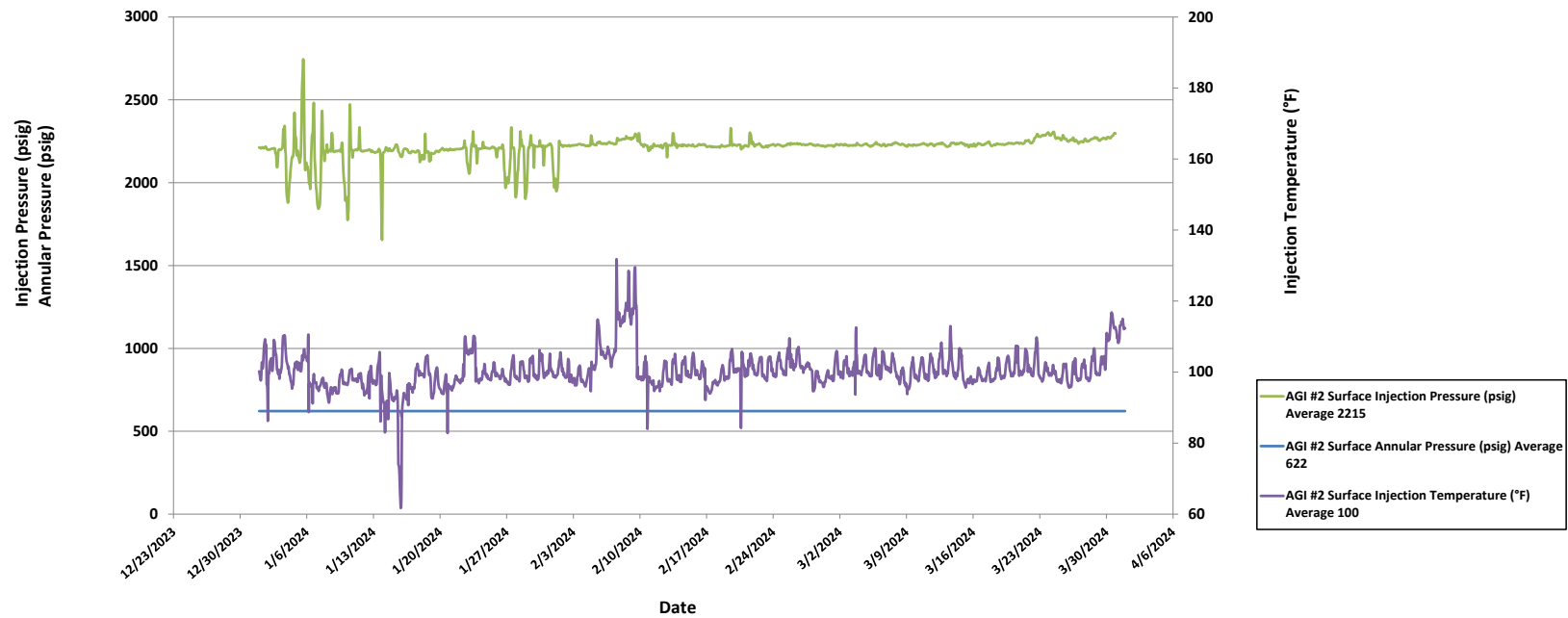
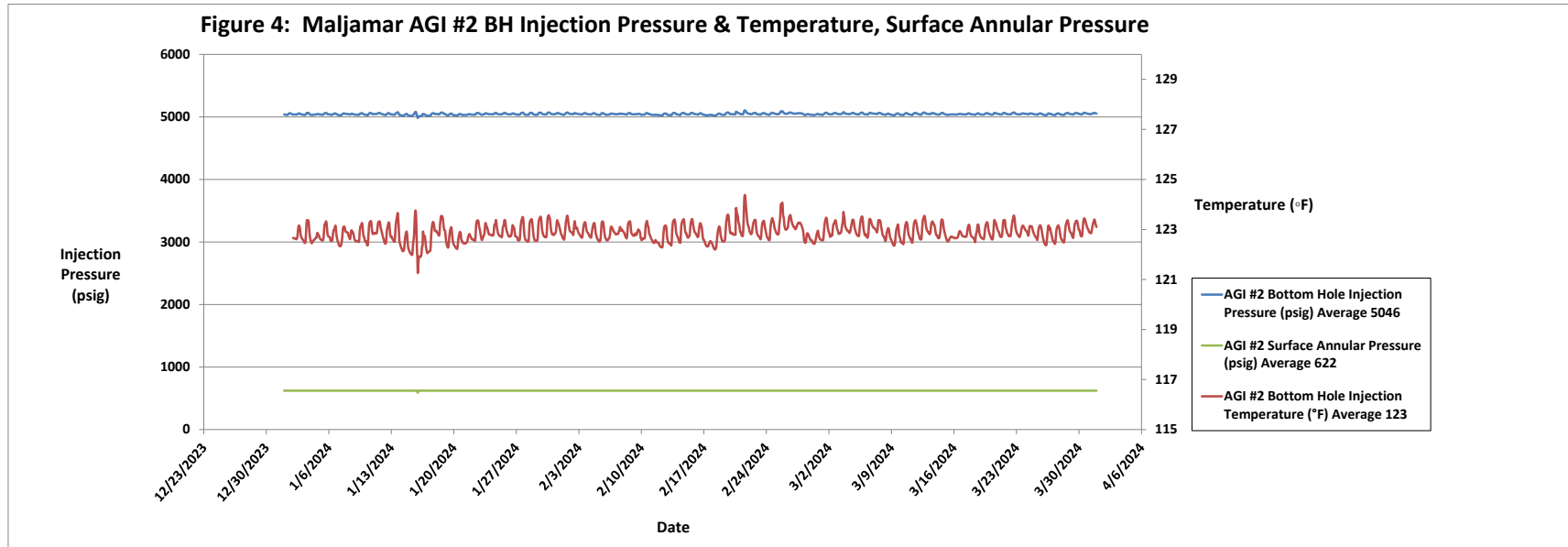
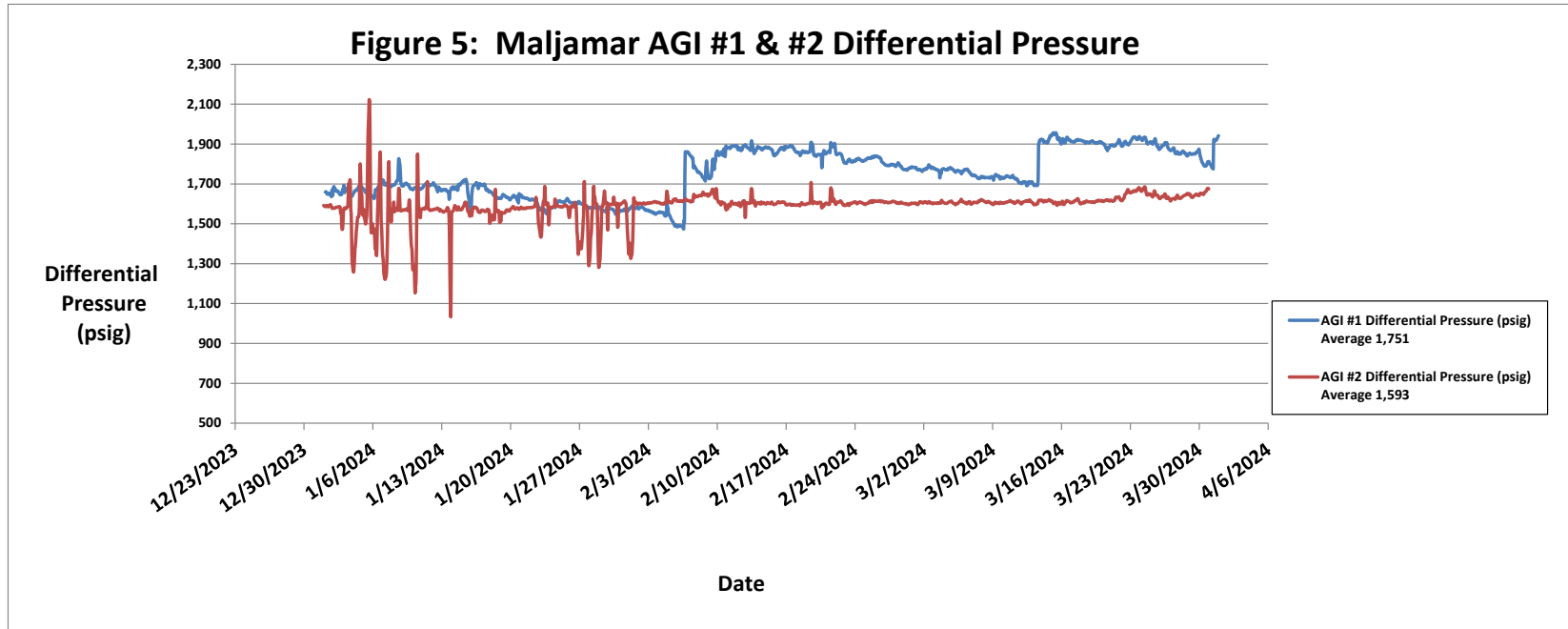
Figure 2: Maljamar AGI #1 Surface Injection Parameters

Figure 3: Maljamar AGI #2 Surface Injection Parameters





District I
1625 N. French Dr., Hobbs, NM 88240
Phone:(575) 393-6161 Fax:(575) 393-0720
District II
811 S. First St., Artesia, NM 88210
Phone:(575) 748-1283 Fax:(575) 748-9720
District III
1000 Rio Brazos Rd., Aztec, NM 87410
Phone:(505) 334-6178 Fax:(505) 334-6170
District IV
1220 S. St Francis Dr., Santa Fe, NM 87505
Phone:(505) 476-3470 Fax:(505) 476-3462

State of New Mexico
Energy, Minerals and Natural Resources
Oil Conservation Division
1220 S. St Francis Dr.
Santa Fe, NM 87505

CONDITIONS

Action 328259

CONDITIONS

Operator: FRONTIER FIELD SERVICES, LLC 10077 Grogans Mill Rd. The Woodlands, TX 77380	OGRID: 221115
	Action Number: 328259
	Action Type: [C-103] Sub. General Sundry (C-103Z)

CONDITIONS

Created By	Condition	Condition Date
anthony.harris	None	4/15/2024