

Well Name: SAN JUAN	Well Location: T29N / R9W / SEC 33 / SWNW / 36.684418 / -107.79126	County or Parish/State: SAN JUAN / NM
Well Number: 22	Type of Well: CONVENTIONAL GAS WELL	Allottee or Tribe Name:
Lease Number: NMNM029146	Unit or CA Name:	Unit or CA Number:
US Well Number: 3004507687	Operator: HILCORP ENERGY COMPANY	

Subsequent Report

Sundry ID: 2786794

Type of Submission: Subsequent Report Type of Action: Plug and Abandonment

Date Sundry Submitted: 04/24/2024 Time Sundry Submitted: 01:31

Date Operation Actually Began: 04/18/2024

Actual Procedure: Hilcorp Energy Company plugged and abandoned the subject well on 4/20/2024 per the attached report.

SR Attachments

- Actual Procedure
- hilcorp_san_juan_22_cbl_20240424133133.pdf
 - SAN_JUAN_22_PA_Subsequent_20240424133054.pdf

Well Name: SAN JUAN	Well Location: T29N / R9W / SEC 33 / SWNW / 36.684418 / -107.79126	County or Parish/State: SAN JUAN / NM
Well Number: 22	Type of Well: CONVENTIONAL GAS WELL	Allottee or Tribe Name:
Lease Number: NMNM029146	Unit or CA Name:	Unit or CA Number:
US Well Number: 3004507687	Operator: HILCORP ENERGY COMPANY	

Operator

I certify that the foregoing is true and correct. Title 18 U.S.C. Section 1001 and Title 43 U.S.C. Section 1212, make it a crime for any person knowingly and willfully to make to any department or agency of the United States any false, fictitious or fraudulent statements or representations as to any matter within its jurisdiction. Electronic submission of Sundry Notices through this system satisfies regulations requiring a

Operator Electronic Signature: TAMMY JONES

Signed on: APR 24, 2024 01:31 PM

Name: HILCORP ENERGY COMPANY

Title: Regulatory Compliance Specialist

Street Address: 382 ROAD 3100

City: AZTECState: NM

Phone: (505) 324-5185

Email address: TAJONES@HILCORP.COM

Field

Representative Name:

Street Address:

City:State:Zip:

Phone:

Email address:

BLM Point of Contact

BLM POC Name: MATTHEW H KADE

BLM POC Title: Petroleum Engineer

BLM POC Phone: 5055647736

BLM POC Email Address: MKADE@BLM.GOV

Disposition: Accepted

Disposition Date: 04/24/2024

Signature: Matthew Kade

SAN JUAN 22

30.045.07687

PLUG & ABANDONMENT

4/18/2024 – MIRU. CK PRESSURES. SITP = 80 PSI, SICP = 80 PSI, SIICP = N/A, SIBHP = 0 PSI. B/D WELL. SDFN.

4/19/2024 – CK PRESSURES. SITP = 67 PSI, SICP = 67 PSI, SIICP = N/A, SIBHP = 0 PSI, BDW 5 HRS. ND WH. NU BOP, PRESSURE TEST & FUNCTION TEST BOP'S. RU RIG FLOOR. PULL TBG HANGER @ 9K SW, 1.90" 2.9# TBG. LD 74 JTS OF 1.90" PROD TBG ONTO TRAILER. XO HANDLING TOOLS & PIPE RAMS TO 2.375". MU 5.5" CICR. PU 75 JTS OF 2.375 TBG TO 2350'. SET CICR @ 2350'. LW W/55 BBLS & PUMP 58 BBLS. PT TO 560 PSI & PASSED. BLM REP GOOD WTH TEST. TOO H 37 STDS OF 2.375" TBG. RU WIRELINE, RUN CBL FROM 2350' TO SURFACE. POOH R/D WIRELINE. MU TAG SUB. TIH 37 STDS OF 2.375" TBG & 1 JT TO 2350'. **PUMP CEMENT PLUG #1 (PC TOP & CICR)** 18 SXS 3.6 BBLS, 1.15, 15.8#, 5 GAL/SX. TOC @ 2200', BOC @ 2350'. LD 6 JTS. R/O 10 BBLS. TOO H 10 STDS OF 2.375" TBG & WOC OVERNIGHT. SISW, DEBRIEF CREW. SDFN. **(BLM REP. CLAY YAZZIE ON LOCATION)**

4/20/2024 – CK PRESSURES. SITP = 0 PSI, SICP = 0 PSI, SIICP = N/A, SIBHP = 0 PSI. B/D WELL, 0 MINS. TIH 10 STDS OF 2.375" TBG & TAG PLUG #1 @ 2195'. LD 4 JTS. **PUMP CEMENT PLUG #2 (FRD TOP)** 18 SXS 3.6 BBLS, 1.15, 15.8#, 5 GAL/SX. TOC @ 1926', BOC @ 2076'. LD 19 JTS. **PUMP CEMENT PLUG #3 (KRD & OJO TOP)** 54 SXS 10.9 BBLS, 1.15, 15.8#, 5 GAL/SX. TOC @ 1026', BOC @ 1488'. LD 47 JTS. RU WIRELINE, RIH & PERF SQUEEZES HOLES @ 202' (SURFACE). POOH & RD WIRELINE. LW W/5 BBLS & PUMP 20 BBLS. INJECTION RATE @ 2 BBLS/MIN, 110 PSI. **PUMP CEMENT PLUG #4 (SURFACE)** 69 SXS 14.1 BBLS, 1.15, 15.8#, 5 GAL/SX. TOC @ 0', BOC @ 202'. 24 SX IN 5.5" CASING & 45 SX IN 8-5/8" CASING. WASH OUT BOP OF CEMENT & WOC SURFACE PLUG. (NOTIFIED NMOC MONICA KUEHLING AND BLM OF RIG MOVE TOMORROW MORNING FROM SAN JUAN 22 TO JOHNSTON LS 13) RD RIG FLOOR, ND BOP. CUT OFF WH, (TOC IN 5.5" PROD 25' & 8-5/8" SURFACE 16') WELD ON P&A MARKER. RU 1" POLY LINE RUN IN 8-5/8 & 5.5" CASING. FILL CASING AND CELLAR WITH 21 SXS CEMENT. RIG DOWN RIG AND EQUIPMENT. **(RIG RELEASED @ 17:00 4/20/24)**

(BLM REP. CLAY YAZZIE NOT ON LOCATION TODAY, UPDATES OVER PHONE)

Tammy Jones

From: Rennick, Kenneth G <krennick@blm.gov>
Sent: Saturday, April 20, 2024 7:35 AM
To: John LaMond; Monica Kuehling
Cc: Kade, Matthew H; Farmington Regulatory Techs; Brice Clyde - (C); Clay Padgett; Lee Murphy; Rustin Mikeska; John LaMond
Subject: Re: [EXTERNAL] P&A Revision Request for Hilcorp's SAN JUAN 22 (API # 3004507687)

CAUTION: External sender. DO NOT open links or attachments from UNKNOWN senders.

The BLM finds the procedure appropriate.

Get [Outlook for iOS](#)

From: John LaMond <jlamond@hilcorp.com>
Sent: Friday, April 19, 2024 5:27:07 PM
To: Rennick, Kenneth G <krennick@blm.gov>; Monica Kuehling <monica.kuehling@emnrd.nm.gov>
Cc: Kade, Matthew H <mkade@blm.gov>; Farmington Regulatory Techs <FarmingtonRegulatoryTechs@hilcorp.com>; Brice Clyde - (C) <Brice.Clyde@hilcorp.com>; Clay Padgett <cpadgett@hilcorp.com>; Lee Murphy <lmurphy@hilcorp.com>; Rustin Mikeska <rmikeska@hilcorp.com>; John LaMond <jlamond@hilcorp.com>
Subject: Re: [EXTERNAL] P&A Revision Request for Hilcorp's SAN JUAN 22 (API # 3004507687)

Good afternoon Monica and Kenny,

One adjustment Hilcorp would like to make from the approvals below is to split PLUG #3 (KRD & OJO) into two separate inside plugs. These will now be called PLUG #3 & PLUG #4 (outlined below). Do we have approval to split these plugs into two separate inside plugs?

- PLUG #3: 18sx Class G (1.15 yld) KRD Top @ 1,438':
-Pump an 18 sack balanced cement plug inside the 5-1/2" casing (Est. TOC @ 1,338' & Est. BOC @ 1,488')
- PLUG #4: 18sx Class G (1.15 yld) OJO Top @ 1,126':
-Pump an 18 sack balanced cement plug inside the 5-1/2" casing (Est. TOC @ 1,026' & Est. BOC @ 1,176')
- Additionally the surface casing shoe plug will now be called "PLUG #5" and will be pumped as outlined in the previous email (Perf @ 202', pump 58sx).

Please let me know if you have any questions or concerns with this plan.

Thanks,

John LaMond

Sent from my iPhone

On Apr 19, 2024, at 5:12 PM, Rennick, Kenneth G <krennick@blm.gov> wrote:

CAUTION: External sender. DO NOT open links or attachments from UNKNOWN senders.

To confirm, the BLM finds the procedure appropriate.

Get [Outlook for iOS](#)

From: Kuehling, Monica, EMNRD <monica.kuehling@emnrd.nm.gov>
Sent: Friday, April 19, 2024 4:06:38 PM
To: John LaMond <jlamond@hilcorp.com>; Rennick, Kenneth G <krennick@blm.gov>; Kade, Matthew H <mkade@blm.gov>
Cc: Farmington Regulatory Techs <FarmingtonRegulatoryTechs@hilcorp.com>; Brice Clyde - (C) <Brice.Clyde@hilcorp.com>; Clay Padgett <cpadgett@hilcorp.com>; Lee Murphy <lmurphy@hilcorp.com>; Rustin Mikeska <rmikeska@hilcorp.com>
Subject: RE: [EXTERNAL] P&A Revision Request for Hilcorp's SAN JUAN 22 (API # 3004507687)

NMOCD approves below with prior approval from the BLM

Thank you

Monica Kuehling
Compliance Officer Supervisor
Deputy Oil and Gas Inspector
New Mexico Oil Conservation Division
North District
Office Phone: 505-334-6178 ext. 123
Cell Phone: 505-320-0243
Email - monica.kuehling@emnrd.nm.gov

From: John LaMond <jlamond@hilcorp.com>
Sent: Friday, April 19, 2024 4:00 PM
To: Kuehling, Monica, EMNRD <monica.kuehling@emnrd.nm.gov>; Rennick, Kenneth G <krennick@blm.gov>; Kade, Matthew H <mkade@blm.gov>
Cc: Farmington Regulatory Techs <FarmingtonRegulatoryTechs@hilcorp.com>; Brice Clyde - (C) <Brice.Clyde@hilcorp.com>; Clay Padgett <cpadgett@hilcorp.com>; Lee Murphy <lmurphy@hilcorp.com>; Rustin Mikeska <rmikeska@hilcorp.com>; John LaMond <jlamond@hilcorp.com>
Subject: RE: [EXTERNAL] P&A Revision Request for Hilcorp's SAN JUAN 22 (API # 3004507687)

Good afternoon Monica & Kenny,

Attached is the CBL run this afternoon (4/19/2024) that was run from 2,350' to surface. I have also attached the approved NOI as well as the updated procedure based on the COAs as outlined and approved in the email chain below (neither of these procedures reflect the results of the attached CBL).

Hilcorp received verbal approval from both the BLM and NMOCD to perform the following adjustments:

- PLUG #1: 18sx of Class G Cement (15.8 PPG, 1.15 yield); PC Perfs @ 2,400' | PC Top @ 2,316':
 - NO CHANGES
 - Pump an 18 sack balanced cement plug inside the 5-1/2" casing (est. TOC @ +/- 2,200' & est. BOC @ +/- 2,350'). *Note cement plug lengths and volumes account for excess.
 - WOC & Tag
 - Once plug is pumped, pressure test 4.5" casing to 560 psi

- PLUG #2: 18sx of Class G Cement (15.8 PPG, 1.15 yield); FRD Top @ 2,026':
 - CBL shows good cement from 1,850' to 2,350' (bottom of log).
 - No need for an outside plug. Adjusting to inside plug only.
 - Pump an 18 sack balanced cement plug inside the 5-1/2" casing (est. TOC @ +/- 1,926' & est. BOC @ +/- 2,076'). *Note cement plug lengths and volumes account for excess.
- PLUG #3: 54sx of Class G Cement (15.8 PPG, 1.15 yield); KRD Top @ 1,438' | OJO Top @ 1,126':
 - CBL shows cement from 214' to 1,442'.
 - No need for an outside plug. Adjusting to inside plug only.
 - Pump a 54 sack balanced cement plug inside the 5-1/2" casing (est. TOC @ +/- 1,026' & est. BOC @ +/- 1,488'). *Note cement plug lengths and volumes account for excess.
- PLUG #4: 58sx of Class G Cement (15.8 PPG, 1.15 yield); Surf. Casing Shoe @ 152':
 - NO CHANGES
 - TIH & perforate squeeze holes @ +/- 202'. Establish circulation.
 - Pump 8sx of cement in the 5-1/2" casing X 7-7/8" open hole annulus (est. TOC @ +/- 152' & est. BOC @ +/- 202'). Continue pumping 26sx of cement in the 5-1/2" casing X 8-5/8" casing annulus (est. TOC @ +/- 0' & est. BOC @ +/- 152'). Pump a 24 sack balanced cement plug inside the 5-1/2" casing (est. TOC @ +/- 0' & est. BOC @ +/- 202'). WOC for 4 hrs, tag TOC w/ work string.

Please also note that a clerical error was previously made in the subject of this email, labeling the incorrect API number. The SAN JUAN 22's correct API # is **3004507687**. This correct number is now in the email chain. All occurrences in the email chain below have been corrected and highlighted.

Please let me know if you have any questions.

Thanks,

John LaMond

Operations Engineer – Technical Services
 Hilcorp Energy Company
 1111 Travis
 Houston, TX 77002
 346-237-2210 (Office)
 832-754-9692 (Cell)
jlamond@hilcorp.com

From: Kuehling, Monica, EMNRD <monica.kuehling@emnrd.nm.gov>
Sent: Tuesday, March 26, 2024 5:05 PM
To: Rennick, Kenneth G <krennick@blm.gov>; John LaMond <jlamond@hilcorp.com>; Kade, Matthew H <mkade@blm.gov>
Cc: Farmington Regulatory Techs <FarmingtonRegulatoryTechs@hilcorp.com>; Brice Clyde - (C) <Brice.Clyde@hilcorp.com>; Clay Padgett <cpadgett@hilcorp.com>; Lee Murphy <lmurphy@hilcorp.com>; Max Weaver <mweaver@hilcorp.com>; Rustin Mikeska <rmikeska@hilcorp.com>
Subject: RE: [EXTERNAL] P&A Revision Request for Hilcorp's SAN JUAN 22 (API # **3004507687**)

CAUTION: External sender. DO NOT open links or attachments from UNKNOWN senders.

NMOCD approves below.

Thank you

Monica Kuehling
Compliance Officer Supervisor
Deputy Oil and Gas Inspector
New Mexico Oil Conservation Division
North District
Office Phone: 505-334-6178 ext. 123
Cell Phone: 505-320-0243
Email - monica.kuehling@emnrd.nm.gov

From: Rennick, Kenneth G <krennick@blm.gov>
Sent: Monday, March 25, 2024 3:20 PM
To: John LaMond <jlamond@hilcorp.com>; Kuehling, Monica, EMNRD <monica.kuehling@emnrd.nm.gov>; Kade, Matthew H <mkade@blm.gov>
Cc: Farmington Regulatory Techs <FarmingtonRegulatoryTechs@hilcorp.com>; Brice Clyde - (C) <Brice.Clyde@hilcorp.com>; Clay Padgett <cpadgett@hilcorp.com>; Lee Murphy <lmurphy@hilcorp.com>; Max Weaver <mweaver@hilcorp.com>; Rustin Mikeska <rmikeska@hilcorp.com>
Subject: Re: [EXTERNAL] P&A Revision Request for Hilcorp's SAN JUAN 22 (API # **3004507687**)

The BLM finds the proposed procedure appropriate.

Kenneth (Kenny) Rennick

Petroleum Engineer

Bureau of Land Management
Farmington Field Office
6251 College Blvd
Farmington, NM 87402

Email: krennick@blm.gov
Mobile & Text: 505.497.0019

From: John LaMond <jlamond@hilcorp.com>
Sent: Monday, March 25, 2024 3:05 PM
To: Kuehling, Monica, EMNRD <monica.kuehling@emnrd.nm.gov>; Rennick, Kenneth G <krennick@blm.gov>; Kade, Matthew H <mkade@blm.gov>
Cc: Farmington Regulatory Techs <FarmingtonRegulatoryTechs@hilcorp.com>; Brice Clyde - (C) <Brice.Clyde@hilcorp.com>; Clay Padgett <cpadgett@hilcorp.com>; Lee Murphy <lmurphy@hilcorp.com>; Max Weaver <mweaver@hilcorp.com>; Rustin Mikeska <rmikeska@hilcorp.com>; John LaMond <jlamond@hilcorp.com>
Subject: [EXTERNAL] P&A Revision Request for Hilcorp's SAN JUAN 22 (API # **3004507687**)

This email has been received from outside of DOI - Use caution before clicking on links, opening attachments, responding.

Good afternoon Monica and Kenny,

Hilcorp is planning to work on the SAN JUAN 22 (API # **3004507687**) P&A in the near future.

I have attached the approved P&A NOI, as well as an updated procedure based on the COAs in the approved NOI.

Based on the COAs, Hilcorp requests the following adjustments to the approved procedure:

- PLUG #1: The CICR/CIBP will be set @ 2,350' (PC Top @ 2,316', PC Perfs @ 2,400'). (**NMOCD provided verbal approval for this after discussing the depths compared to the original COAs**)
 - Pump 150' of cement on top of the CICR/CIBP from 2,200' to 2,350'.
- All other plugs have been adjusted according to the BLM & NMOCD formation tops.



HILCORP ENERGY COMPANY
SAN JUAN 22
P&A NOI

API #: 3004507687

JOB PROCEDURES

1. Contact NMOCD and BLM (where applicable) 24 hours prior to MIRU.
2. Hold pre-job safety meeting. Verify cathodic is off. Comply with all NMOCD, BLM, and HEC safety and environmental regulations.
3. MIRU service rig and associated equipment; NU and test BOP.
4. TOOH w/ 1.9" tubing string.
5. Set a 5-1/2" CIBP or CICR at +/- 2,350' to isolate the PC Perfs.
6. Load the well as needed. Pressure test the casing above the plug to 560 psig.
7. RU Wireline. Run CBL. Record Top of Cement. All subsequent plugs below are subject to change pending CBL results.
8. PU & TIH w/ work string to +/- 2,350'.
9. **PLUG #1: 18sx of Class G Cement (15.8 PPG, 1.15 yield); PC Perfs @ 2,400' | PC Top @ 2,316':**
 Pump an 18 sack balanced cement plug inside the 5-1/2" casing (est. **TOC @ +/- 2,200'** & est. **BOC @ +/- 2,350'**).
10. TOOH w/ work string. TIH & perforate squeeze holes @ +/- 2,076'. RIH w/ 5-1/2" CICR and set CICR @ +/- 2,026'. TIH w/ work string & sting into C injection.
11. **PLUG #2: 49sx of Class G Cement (15.8 PPG, 1.15 yield); FRD Top @ 2,026':**
 Pump 31sx of cement in the 5-1/2" casing X 7-7/8" open hole annulus (est. **TOC @ +/- 1,876'** & est. **BOC @ +/- 2,076'**). Pump an additional 6sx of ce the 5-1/2" CICR (est. **TOC @ +/- 2,026'** & est. **BOC @ +/- 2,076'**). Sting out of retainer, pump a 12 sack balanced cement plug on top of the CICR. (**1,926'** & est. **BOC @ +/- 2,026'**). WOC for 4 hrs, tag TOC w/ work string. *Note cement plug lengths and volumes account for excess.
12. TOOH w/ work string. TIH & perforate squeeze holes @ +/- 1,488'. RIH w/ 5-1/2" CICR and set CICR @ +/- 1,438'. TIH w/ work string & sting into C injection.
13. **PLUG #3: 132sx of Class G Cement (15.8 PPG, 1.15 yield); KRD Top @ 1,438' | OJO Top @ 1,126':**
 Pump 78sx of cement in the 5-1/2" casing X 7-7/8" open hole annulus (est. **TOC @ +/- 976'** & est. **BOC @ +/- 1,488'**). Pump an additional 6sx of ce the 5-1/2" CICR (est. **TOC @ +/- 1,438'** & est. **BOC @ +/- 1,488'**). Sting out of retainer, pump a 48 sack balanced cement plug on top of the CICR. (**1,026'** & est. **BOC @ +/- 1,438'**). WOC for 4 hrs, tag TOC w/ work string. *Note cement plug lengths and volumes account for excess.
14. TOOH w/ work string. TIH & perforate squeeze holes @ +/- 202'. Establish circulation.
15. **PLUG #4: 58sx of Class G Cement (15.8 PPG, 1.15 yield); Surf. Casing Shoe @ 152':**
 Pump 8sx of cement in the 5-1/2" casing X 7-7/8" open hole annulus (est. **TOC @ +/- 152'** & est. **BOC @ +/- 202'**). Continue pumping 26sx of ceme casing X 8-5/8" casing annulus (est. **TOC @ +/- 0'** & est. **BOC @ +/- 152'**). Pump an 24 sack balanced cement plug inside the 5-1/2" casing (est. **T** est. **BOC @ +/- 202'**). WOC for 4 hrs, tag TOC w/ work string.
16. ND BOP, cut off casing below casing flange. Top off cement in surface casing annulus, if needed. Install a P&A marker with cement to comply with r down, move off location, cut off anchors, and restore location.

Do the NMOCD and BLM approve of the revised procedure?

Thanks,

John LaMond

Operations Engineer – Technical Services
 Hilcorp Energy Company
 1111 Travis
 Houston, TX 77002

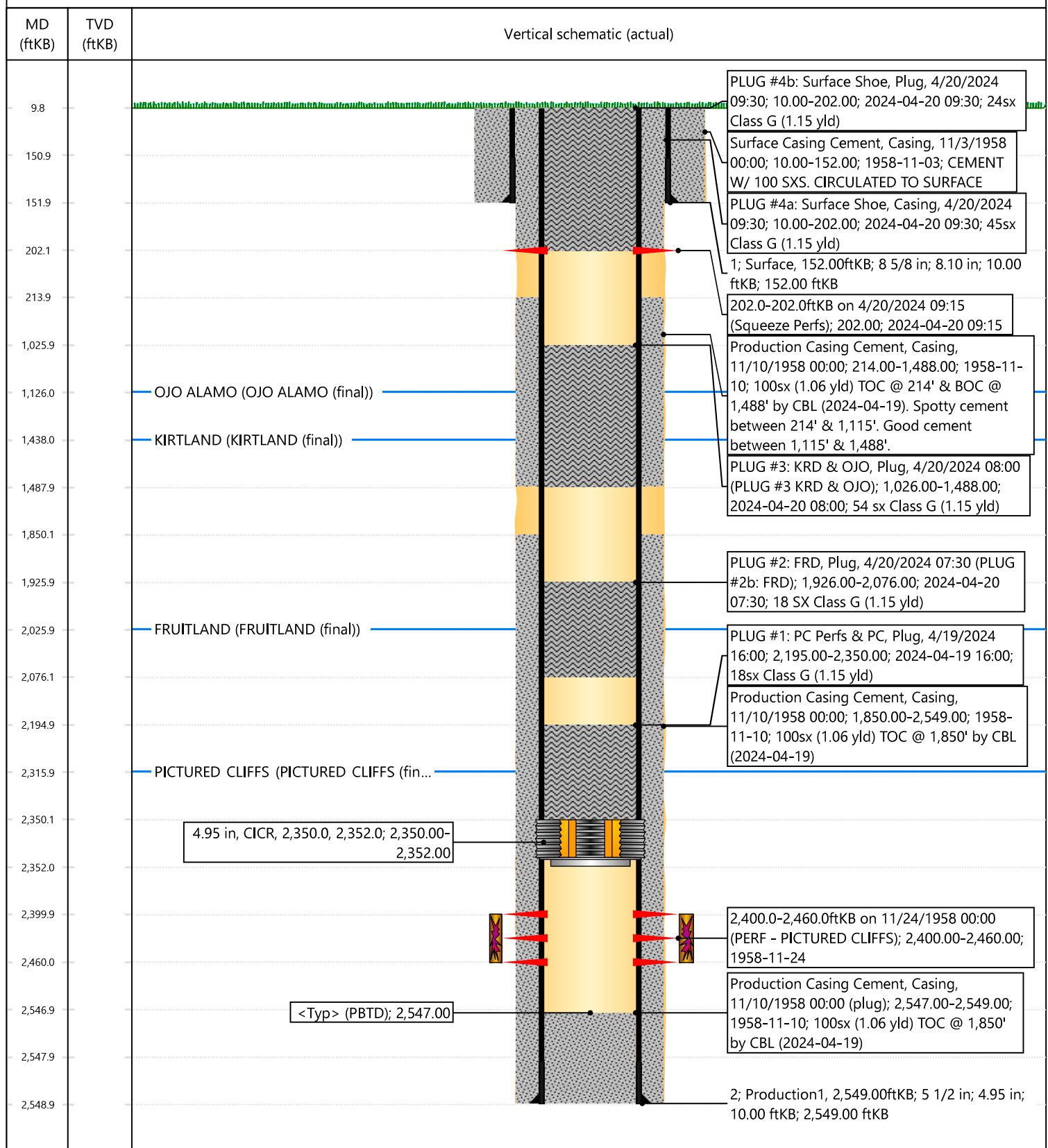


Current Schematic - Version 3

Well Name: SAN JUAN #22

API / UWI 3004507687	Surface Legal Location 033-029N-009W-H	Field Name AZTEC PICTURED CLIFFS (GAS)	Route 0805	State/Province NEW MEXICO	Well Configuration Type
Ground Elevation (ft) 6,060.00	Original KB/RT Elevation (ft) 6,070.00	Tubing Hanger Elevation (ft)	RKB to GL (ft) 10.00	KB-Casing Flange Distance (ft)	KB-Tubing Hanger Distance (ft)

Original Hole



District I
1625 N. French Dr., Hobbs, NM 88240
Phone:(575) 393-6161 Fax:(575) 393-0720

District II
811 S. First St., Artesia, NM 88210
Phone:(575) 748-1283 Fax:(575) 748-9720

District III
1000 Rio Brazos Rd., Aztec, NM 87410
Phone:(505) 334-6178 Fax:(505) 334-6170

District IV
1220 S. St Francis Dr., Santa Fe, NM 87505
Phone:(505) 476-3470 Fax:(505) 476-3462

State of New Mexico
Energy, Minerals and Natural Resources
Oil Conservation Division
1220 S. St Francis Dr.
Santa Fe, NM 87505

CONDITIONS

Action 337478

CONDITIONS

Operator: HILCORP ENERGY COMPANY 1111 Travis Street Houston, TX 77002	OGRID: 372171
	Action Number: 337478
	Action Type: [C-103] Sub. Plugging (C-103P)

CONDITIONS

Created By	Condition	Condition Date
mkuehling	well plugged 4/20/2024	4/25/2024