

Submit Copy To Appropriate District Office
District I - (575) 393-6161
1625 N. French Dr., Hobbs, NM 88240
District II - (575) 748-1283
811 S. First St., Artesia, NM 88210
District III - (505) 334-6178
1000 Rio Brazos Rd., Aztec, NM 87410
District IV - (505) 476-3460
1220 S. St. Francis Dr., Santa Fe, NM 87505

State of New Mexico
Energy, Minerals and Natural Resources

Form C-103
Revised July 18, 2013

OIL CONSERVATION DIVISION
1220 South St. Francis Dr.
Santa Fe, NM 87505

WELL API NO. 30-015-53185
5. Indicate Type of Lease STATE [] FEE [] FED X
6. State Oil & Gas Lease No.
7. Lease Name or Unit Agreement Name CORRAL 16-4 STATE FED COM
8. Well Number 124H
9. OGRID Number 005380
10. Pool name or Wildcat WILLOW LAKE; BONESPRING, SOUTHEAST
11. Elevation (Show whether DR, RKB, RT, GR, etc.) 2,977'

SUNDRY NOTICES AND REPORTS ON WELLS
(DO NOT USE THIS FORM FOR PROPOSALS TO DRILL OR TO DEEPEN OR PLUG BACK TO A DIFFERENT RESERVOIR. USE "APPLICATION FOR PERMIT" (FORM C-101) FOR SUCH PROPOSALS.)
1. Type of Well: Oil Well [] Gas Well [X] Other
2. Name of Operator XTO ENERGY, INC
3. Address of Operator 6401 HOLIDAY HILL ROAD BUILDING 5, MIDLAND, TX 79707
4. Well Location Unit Letter N : 868 feet from the SOUTH line and 2,012 feet from the WEST line
Section 16 Township 25S Range 29E NMPM County EDDY
11. Elevation (Show whether DR, RKB, RT, GR, etc.) 2,977'

12. Check Appropriate Box to Indicate Nature of Notice, Report or Other Data

NOTICE OF INTENTION TO:
PERFORM REMEDIAL WORK [] PLUG AND ABANDON []
TEMPORARILY ABANDON [] CHANGE PLANS [X]
PULL OR ALTER CASING [] MULTIPLE COMPL []
DOWNHOLE COMMINGLE []
CLOSED-LOOP SYSTEM []
OTHER: []
SUBSEQUENT REPORT OF:
REMEDIAL WORK [] ALTERING CASING []
COMMENCE DRILLING OPNS. [] P AND A []
CASING/CEMENT JOB []
OTHER: []

13. Describe proposed or completed operations. (Clearly state all pertinent details, and give pertinent dates, including estimated date of starting any proposed work). SEE RULE 19.15.7.14 NMAC. For Multiple Completions: Attach wellbore diagram of proposed completion or recompletion.

XTO Energy, Inc. respectfully submits this Sundry for the well above to change the dedicated acreage of the well.

Spud Date: []

Rig Release Date: []

I hereby certify that the information above is true and complete to the best of my knowledge and belief.

SIGNATURE [Signature] TITLE Regulatory Analyst DATE 3/7/2024

Type or print name Jean A. Cooper E-mail address: jean.cooper@exxonmobil.com PHONE: N/A

For State Use Only

APPROVED BY: [] TITLE [] DATE []

Conditions of Approval (if any):

District I
1625 N. French Dr., Hobbs, NM 88240
Phone: (575) 393-6161 Fax: (575) 393-0720
District II
811 S. First St., Artesia, NM 88210
Phone: (575) 748-1283 Fax: (575) 748-9720
District III
1000 Rio Brazos Road, Aztec, NM 87410
Phone: (505) 334-6178 Fax: (505) 334-6170
District IV
1220 S. St. Francis Dr., Santa Fe, NM 87505
Phone: (505) 476-3460 Fax: (505) 476-3462

State of New Mexico
Energy, Minerals & Natural Resources Department
OIL CONSERVATION DIVISION
1220 South St. Francis Dr.
Santa Fe, NM 87505

Form C-102
Revised August 1, 2011
Submit one copy to appropriate
District Office
[] AMENDED REPORT

WELL LOCATION AND ACREAGE DEDICATION PLAT

Table with 3 columns: API Number (30-015-53185), Pool Code (96217), Pool Name (WILLOW LAKE; BONE SPRING, SOUTHEAST), Property Code, Property Name (CORRAL 16-4 STATE FED COM), Well Number (124H), OGRID No. (005380), Operator Name (XTO ENERGY, INC.), Elevation (2,977')

Surface Location

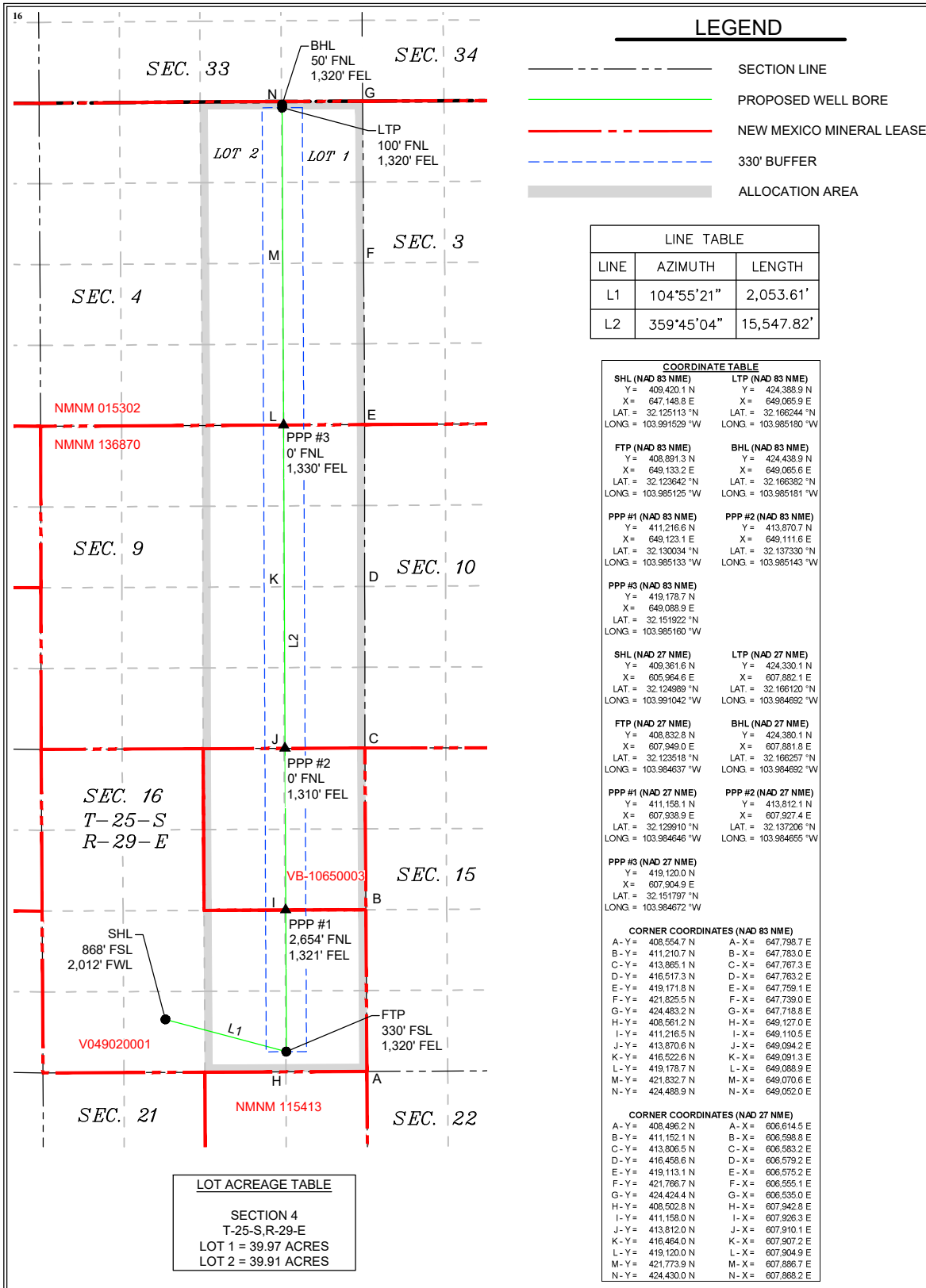
Table with 10 columns: UL or lot no. (N), Section (16), Township (25 S), Range (29 E), Lot Idn, Feet from the (868), North/South line (SOUTH), Feet from the (2,012), East/West line (WEST), County (EDDY)

Bottom Hole Location If Different From Surface

Table with 10 columns: UL or lot no. (1), Section (4), Township (25 S), Range (29 E), Lot Idn, Feet from the (50), North/South line (NORTH), Feet from the (1,320), East/West line (EAST), County (EDDY)

Table with 5 columns: Dedicated Acres (959.88), Joint or Infill, Consolidation Code, Order No.

No allowable will be assigned to this completion until all interests have been consolidated or a non-standard unit has been approved by the division.



LINE TABLE
LINE AZIMUTH LENGTH
L1 104°55'21" 2,053.61'
L2 359°45'04" 15,547.82'

COORDINATE TABLE
SHL (NAD 83 NME) LTP (NAD 83 NME)
Y = 409,420.1 N Y = 424,438.9 N
X = 647,148.8 E X = 649,065.9 E
LAT. = 32.125113 °N LAT. = 32.166244 °N
LONG. = 103.991529 °W LONG. = 103.985180 °W
FTP (NAD 83 NME) BHL (NAD 83 NME)
Y = 408,891.3 N Y = 424,438.9 N
X = 649,133.2 E X = 649,065.6 E
LAT. = 32.123642 °N LAT. = 32.166382 °N
LONG. = 103.985125 °W LONG. = 103.985181 °W
PPP #1 (NAD 83 NME) PPP #2 (NAD 83 NME)
Y = 411,216.6 N Y = 413,870.7 N
X = 649,123.1 E X = 649,111.6 E
LAT. = 32.130034 °N LAT. = 32.137330 °N
LONG. = 103.985133 °W LONG. = 103.985143 °W
PPP #3 (NAD 83 NME)
Y = 419,178.7 N
X = 649,088.9 E
LAT. = 32.151922 °N
LONG. = 103.985160 °W
SHL (NAD 27 NME) LTP (NAD 27 NME)
Y = 409,361.6 N Y = 424,330.1 N
X = 605,964.6 E X = 607,882.1 E
LAT. = 32.124989 °N LAT. = 32.166120 °N
LONG. = 103.991042 °W LONG. = 103.984692 °W
FTP (NAD 27 NME) BHL (NAD 27 NME)
Y = 408,832.8 N Y = 424,380.1 N
X = 607,949.0 E X = 607,881.8 E
LAT. = 32.123518 °N LAT. = 32.166257 °N
LONG. = 103.984637 °W LONG. = 103.984692 °W
PPP #1 (NAD 27 NME) PPP #2 (NAD 27 NME)
Y = 411,158.1 N Y = 413,812.1 N
X = 607,938.9 E X = 607,927.4 E
LAT. = 32.129910 °N LAT. = 32.137206 °N
LONG. = 103.984646 °W LONG. = 103.984656 °W
PPP #3 (NAD 27 NME)
Y = 419,120.0 N
X = 607,904.9 E
LAT. = 32.151797 °N
LONG. = 103.984672 °W

CORNER COORDINATES (NAD 83 NME)
A-Y = 408,554.7 N A-X = 647,798.7 E
B-Y = 411,216.7 N B-X = 647,783.0 E
C-Y = 413,865.1 N C-X = 647,757.3 E
D-Y = 416,517.3 N D-X = 647,763.2 E
E-Y = 419,171.8 N E-X = 647,759.1 E
F-Y = 421,825.5 N F-X = 647,739.0 E
G-Y = 424,483.2 N G-X = 647,718.8 E
H-Y = 408,561.2 N H-X = 649,127.0 E
I-Y = 411,216.5 N I-X = 649,110.5 E
J-Y = 413,870.6 N J-X = 649,094.2 E
K-Y = 416,522.6 N K-X = 649,091.3 E
L-Y = 419,178.7 N L-X = 649,088.9 E
M-Y = 421,832.7 N M-X = 649,070.6 E
N-Y = 424,488.9 N N-X = 649,052.0 E
CORNER COORDINATES (NAD 27 NME)
A-Y = 408,496.2 N A-X = 606,614.5 E
B-Y = 411,152.1 N B-X = 606,598.8 E
C-Y = 413,806.5 N C-X = 606,583.2 E
D-Y = 416,458.6 N D-X = 606,579.2 E
E-Y = 419,113.1 N E-X = 606,575.2 E
F-Y = 421,766.7 N F-X = 606,555.1 E
G-Y = 424,424.4 N G-X = 606,535.0 E
H-Y = 408,502.8 N H-X = 607,942.8 E
I-Y = 411,158.0 N I-X = 607,926.3 E
J-Y = 413,812.0 N J-X = 607,910.1 E
K-Y = 416,464.0 N K-X = 607,907.2 E
L-Y = 419,120.0 N L-X = 607,904.9 E
M-Y = 421,773.9 N M-X = 607,886.7 E
N-Y = 424,430.0 N N-X = 607,868.2 E

LOT ACREAGE TABLE
SECTION 4
T-25-S, R-29-E
LOT 1 = 39.97 ACRES
LOT 2 = 39.91 ACRES

17 OPERATOR CERTIFICATION
I hereby certify that the information contained herein is true and complete to the best of my knowledge and belief, and that this organization either owns a working interest or unleased mineral interest in the land including the proposed bottom hole location or has a right to drill this well at this location pursuant to a contract with an owner of such a mineral or working interest, or to a voluntary pooling agreement or a compulsory pooling order heretofore entered by the division.
Signature: Jean A. Cooper
Date: 3/7/2024

Printed Name: Jean A. Cooper
E-mail Address: jean.cooper@exxonmobil.com

18 SURVEYOR CERTIFICATION
I hereby certify that the well location shown on this plat was plotted from field notes of actual surveys made by me or under my supervision, and that the same is true and correct to the best of my belief.
Date of Survey: 3/6/2024
Signature and Seal of Professional Surveyor:



P:\618.013 XTO Energy - NM\013 Corral Canyon Unit - Eddy\04 - Corral Canyon 16-9 - Eddy\Wells\10 - 16-4 124H\DWG\124H C-102.dwg

District I
 1625 N. French Dr., Hobbs, NM 88240
 Phone:(575) 393-6161 Fax:(575) 393-0720

District II
 811 S. First St., Artesia, NM 88210
 Phone:(575) 748-1283 Fax:(575) 748-9720

District III
 1000 Rio Brazos Rd., Aztec, NM 87410
 Phone:(505) 334-6178 Fax:(505) 334-6170

District IV
 1220 S. St Francis Dr., Santa Fe, NM 87505
 Phone:(505) 476-3470 Fax:(505) 476-3462

State of New Mexico
Energy, Minerals and Natural Resources
Oil Conservation Division
1220 S. St Francis Dr.
Santa Fe, NM 87505

CONDITIONS

Action 321233

CONDITIONS

Operator: XTO ENERGY, INC 6401 Holiday Hill Road Midland, TX 79707	OGRID: 5380
	Action Number: 321233
	Action Type: [C-103] NOI Change of Plans (C-103A)

CONDITIONS

Created By	Condition	Condition Date
ward.rikala	None	5/14/2024