

Well Name: SAN JUAN 28-6 UNIT	Well Location: T27N / R6W / SEC 14 / NENE / 36.57925 / -107.42999	County or Parish/State: RIO ARRIBA / NM
Well Number: 67	Type of Well: CONVENTIONAL GAS WELL	Allottee or Tribe Name:
Lease Number: FEE	Unit or CA Name: SAN JUAN 28-6 UNIT--MV	Unit or CA Number: NMNM78412A
US Well Number: 3003907097	Operator: HILCORP ENERGY COMPANY	

Subsequent Report

Sundry ID: 2789530

Type of Submission: Subsequent Report	Type of Action: Plug and Abandonment
Date Sundry Submitted: 05/10/2024	Time Sundry Submitted: 10:52
Date Operation Actually Began: 05/01/2024	

Actual Procedure: Hilcorp Energy Company plugged and abandoned the subject well on 5/9/2024 per the attached report.

SR Attachments

Actual Procedure

SJ_28_6_UNIT_67_C103_SR_20240510105132.pdf

Well Name: SAN JUAN 28-6 UNIT

Well Location: T27N / R6W / SEC 14 / NENE / 36.57925 / -107.42999

County or Parish/State: RIO ARRIBA / NM

Well Number: 67

Type of Well: CONVENTIONAL GAS WELL

Allottee or Tribe Name:

Lease Number: FEE

Unit or CA Name: SAN JUAN 28-6 UNIT--MV

Unit or CA Number: NMNM78412A

US Well Number: 3003907097

Operator: HILCORP ENERGY COMPANY

Operator

I certify that the foregoing is true and correct. Title 18 U.S.C. Section 1001 and Title 43 U.S.C. Section 1212, make it a crime for any person knowingly and willfully to make to any department or agency of the United States any false, fictitious or fraudulent statements or representations as to any matter within its jurisdiction. Electronic submission of Sundry Notices through this system satisfies regulations requiring a

Operator Electronic Signature: TAMMY JONES

Signed on: MAY 10, 2024 10:52 AM

Name: HILCORP ENERGY COMPANY

Title: Regulatory Compliance Specialist

Street Address: 382 ROAD 3100

City: AZTEC

State: NM

Phone: (505) 324-5185

Email address: TAJONES@HILCORP.COM

Field

Representative Name:

Street Address:

City:

State:

Zip:

Phone:

Email address:

BLM Point of Contact

BLM POC Name: MATTHEW H KADE

BLM POC Title: Petroleum Engineer

BLM POC Phone: 5055647736

BLM POC Email Address: MKADE@BLM.GOV

Disposition: Accepted

Disposition Date: 05/10/2024

Signature: Matthew Kade

Submit 1 Copy To Appropriate District

Office

District I – (575) 393-6161

1625 N. French Dr., Hobbs, NM 88240

District II – (575) 748-1283

811 S. First St., Artesia, NM 88210

District III – (505) 334-6178

1000 Rio Brazos Rd., Aztec, NM 87410

District IV – (505) 476-3460

1220 S. St. Francis Dr., Santa Fe, NM

87505

State of New Mexico
Energy, Minerals and Natural ResourcesForm C-103
Revised July 18, 2013OIL CONSERVATION DIVISION
1220 South St. Francis Dr.
Santa Fe, NM 87505

WELL API NO.

30-039-07097

5. Indicate Type of Lease

STATE ☐ FEE ☒

6. State Oil & Gas Lease No.

FEE

7. Lease Name or Unit Agreement Name

SAN JUAN 28-6 UNIT

8. Well Number 67

9. OGRID Number

372171

10. Pool name or Wildcat

Blanco Mesaverde

SUNDRY NOTICES AND REPORTS ON WELLS

(DO NOT USE THIS FORM FOR PROPOSALS TO DRILL OR TO DEEPEN OR PLUG BACK TO A DIFFERENT RESERVOIR. USE "APPLICATION FOR PERMIT" (FORM C-101) FOR SUCH PROPOSALS.)

1. Type of Well: Oil Well ☐ Gas Well ☒ Other

2. Name of Operator

HILCORP ENERGY COMPANY

3. Address of Operator

382 Road 3100, Aztec, NM 87410

4. Well Location

Unit Letter A : 790 feet from the North line and 865 feet from the East lineSection 14 Township 27N Range 6W NMPM Rio Arriba County

11. Elevation (Show whether DR, RKB, RT, GR, etc.)

6293' GR

12. Check Appropriate Box to Indicate Nature of Notice, Report or Other Data

NOTICE OF INTENTION TO:

PERFORM REMEDIAL WORK

PLUG AND ABANDON ☐TEMPORARILY ABANDON ☐CHANGE PLANS ☐PULL OR ALTER CASING ☐MULTIPLE COMPL ☐DOWNHOLE COMMINGLE ☐CLOSED-LOOP SYSTEM ☐OTHER: ☐

SUBSEQUENT REPORT OF:

REMEDIAL WORK

ALTERING CASING ☐COMMENCE DRILLING OPNS. ☐P AND A ☒CASING/CEMENT JOB ☐OTHER: ☐

13. Describe proposed or completed operations. (Clearly state all pertinent details, and give pertinent dates, including estimated date of starting any proposed work). SEE RULE 19.15.7.14 NMAC. For Multiple Completions: Attach wellbore diagram of proposed completion or recompletion.

Hilcorp Energy Company plugged and abandoned the subject well on 5/9/2024 per the attached report.

Spud Date:

Rig Release Date:

I hereby certify that the information above is true and complete to the best of my knowledge and belief.

SIGNATURE Tammy Jones TITLE Operations/Regulatory Technician – Sr. DATE: 5/10/2024Type or print name Tammy Jones E-mail address: tajones@hilcorp.com PHONE: (505) 324-5185**For State Use Only**

APPROVED BY: _____ TITLE _____ DATE _____

Conditions of Approval (if any):

SAN JUAN 28-6 UNIT 67

30.039.07097

PLUG & ABANDON

5/1/2024 – MIRU.CHECK PSI ON WELL SITP 86#, SICP 72#, SIICP 80#, BH 38#, BDW 20 MINS. ND WH, NU BOP, PRESSURE TEST & FUNCTION TEST BOP'S & RU RIG FLOOR. PULL TBG HANGER @ 22K. LD 169 JTS OF 2.375" PROD TBG. SISW. SDFN.

5/2/2024 – CHECK PSI ON WELL SITP N/A, SICP 75#, SIICP 75#, BH 21#, BDW 10 MINS. MU 5.5" CICR. PU 147 JTS OF 2.375" TBG TO 4624'. TALLEY, STRAP & RABBIT TBG. SET CICR @ 4624'. LW W/105 BBLS & PUMP 110 BBLS. PT TO 600 PSI & FAILED TEST. LOST 10 PSI EVERY MINUTE. **PUMP CEMENT PLUG #1 (MV PERFS)** 18 SXS 3.6 BBLS, 1.15, 15.8#, 5 GAL/SX. TOC @ 4474', BOC @ 4624'. LD 7 JTS. TOO H 70 STDS OF 2.375" TBG & LD SETTING TOOL. WOC. BIG RED TESTED SEALS ON WELLHEAD. TO SEE IF THERE IS COMMUNICATION BETWEEN IC & PC. (GOOD TEST). TIH & TAG PLUG #1 @ 4435'. LD 13 OF 2.375" TBG. RU CEMENTERS. LW W/5 BBLS. PT TO 600 PSI FOR 30 MINS & FAILED. LOST 10 PSI EVERY MINUTE. SIICP WAS SHOWING 5 PSI DURING TEST. BH 0 PSI. **PUMP CEMENT PLUG #2 (CHACRA TOP)** 18 SXS 3.6 BBLS, 1.15, 15.8#, 5 GAL/SX. TOC @ 3901', BOC @ 4051'. LD 5 JTS. TOO H 62 STDS OF 2.375" TBG. WOC #2 PLUG OVERNIGHT. SISW, DEBRIEF CREW. SDFN. **(NMOCD REP EILEEN MEDRANO ON LOCATION)**

5/3/2024 – CHECK PSI ON WELL SITP N/A, SICP 30#, SIICP 52#, BH 0#, BDW 3 MINS. MU TAG SUB. TIH 62 STDS & TAG PLUG #2 @ 3920'. LD 26 JTS. TOO H 50 STDS OF 2.375" TBG. RU WIRELINE, RIH & PERF SQUEEZES HOLES @ 3180'. POOH & RD WIRELINE. INJECTION RATE TO SURFACE OUT INTER. @ 1.8 BBLS/MIN, 45 PSI. PUMPED 10 BBLS TOTAL. CIRCULATION TO SURFACE OUT INTER. CASING AFTER PERFORATIONS @ 3180'. MU 5.5" CICR. TIH & SET CICR @ 3150'. LW TO SURFACE & STING INTO CICR. INJECTION RATE UNDERNEATH @ 1.8 BBLS/MIN & 45 PSI. **PUMP CEMENT PLUG #3 (INTER. SHOE)** 82 SXS 16.7 BBLS, 1.15, 15.8#, 5 GAL/SX. TOC @ 3100', BOC @ 3180'. LD 1 JTS. R/O 15 BBLS. 76 SXS UNDER CICR & 6 SXS ON TOP OF CICR. TOO H 49 STDS & LD SETTING TOOL. WOC. TIH & TAG PLUG #3 @ 3901'. LD 22 JTS. TOO H 38 STDS OF 2.375" TBG. WAIT ON ORDERS TO PROCEED WITH PLUG #4. **OFFICE & NMOCD DECIDED TO MONITOR PRESSURES OVER THE WEEKEND BEFORE PLUG #4.** SISW, DEBRIEF CREW, SDFN. **(NMOCD REP EILEEN MEDRANO ON LOCATION)**

5/6/2024 – CHECK PSI ON WELL SITP N/A, SICP 0#, SIICP 0#, BH 0#, BDW 0 MINS. RU WIRELINE, RIH & PERF SQUEEZES HOLES @ 3082'. INJECTION RATE @ 1.3 BBLS/MIN, 850 PSI. PUMPED 20 BBLS TOTAL. NO CIRC. OUT INTER. CASING @ SURFACE. OFFICE WANTS TO PERF HIGHER @ 3032'. RIH & PERF SQUEEZES HOLES @ 3032'. POOH & RD WIRELINE. SAME RATE. MU CICR 5.5". TIH 38 STDS OF 2.375" TBG & PU 19 JTS TO 2982'. SET 5.5" CICR @ 2982'. **PUMP CEMENT PLUG #4 (PC TOP)** 209 SXS 42.8 BBLS, 1.15, 15.8#, 5 GAL/SX. TOC @ 2900', BOC @ 3032'. LD 3 JTS. R/O 14 BBLS. 193 SXS BETWEEN 9-7/8 & 7-5/8, 6 SXS UNDER CICR & 10 SXS ON TOP OF CICR. TOO H 46 STDS OF 2.375" TBG. WOC. TIH & TAG PLUG #4 @ 2897'. LD 25 JTS. TOO H 34 STDS OF 2.375" TBG. RU WIRELINE, RIH & PERF CIRC HOLES @ 2834'. POOH & RD WIRELINE. NO INJECTION RATE OUT INTER. CASING @ SURFACE. **(GOT APPROVAL FROM NMOCD TO DUE INSIDE PLUG (FRD TOP)** TIH 34 STDS & PU 24 JTS TO 2884'. **PUMP CEMENT PLUG #5 (FRD TOP)** 27 SXS 5.5 BBLS, 1.15, 15.8#, 5 GAL/SX. TOC @ 2650', BOC @ 2884'. LD 9 JTS. R/O 15 BBLS. TOO H 10 STDS OF 2.375" TBG. WOC #5 PLUG OVERNIGHT. SISW, DEBRIEF CREW. SDFN. **(NMOCD REP EILEEN MEDRANO ON LOCATION)**

5/7/2024 – CHECK PSI ON WELL SITP N/A, SICP 0#, SIICP 0#, BH 0#, BDW 0 MINS. TIH & TAG #5 PLUG @ 2687'. LD 18 JTS & TOO H. RU WIRELINE, RIH & PERF CIRC HOLES @ 2538'. POOH & RD WIRELINE. NO INJECTION RATE OUT INTER. CASING @ SURFACE. **(GOT APPROVAL FROM NMOCD TO DO INSIDE PLUG (KRD TOP)** TIH 34 STDS OF 2.375" TBG & 14 JTS TO 2588'. **PUMP CEMENT PLUG #6 (KRD TOP)** 27 SXS 5.5 BBLS, 1.15, 15.8#, 5 GAL/SX. TOC @ 2360', BOC @ 2588'. LD 7 JTS. R/O 10 BBLS. TOO H 10 STDS. WOC #6 PLUG. TIH & TAG PLUG #6 @ 2368'. LD 2 JTS TOO H W/37 STDS OF 2.375" TBG. RU WIRELINE, RIH & PERF CIRC HOLES @ 2322'. POOH & RD WIRELINE. GOOD INJECTION RATE OUT INTER. CASING @ SURFACE.

SAN JUAN 28-6 UNIT 67

30.039.07097

PLUG & ABANDON

1.4 BBLS/MIN @ 50 PSI. TIH 37 STDS OF 2.375" TBG. LD 5 JTS TO 2172'. **PUMP CEMENT PLUG #7 (OJO TOP)** 36 SXS 7.3 BBLS, 1.15, 15.8#, 5 GAL/SX. TOC @ 2172', BOC @ 2322'. R/O 10 BBLS. TOO H 10 STDS & WOC OVERNIGHT. SHUT DOWN DUE TO HIGH WINDS. SISW, DEBRIEF CREW. SDFN. **(NMOCD REP EILEEN MEDRANO ON LOCATION)**

5/8/2024 – CHECK PSI ON WELL SITP 0#, SICP 0#, SIICP 0#, BH 0#, BDW 0 MINS. TIH & TAG #7 PLUG @ 2082'. LD 41 JTS OF 2.375" TBG. TOO H 13 STDS. RU WIRELINE, RIH & PERF SQUEEZES HOLES @ 911'. POOH & RD WIRELINE. INJECTION RATE OUT INTO FORMATION @ 1000 PSI & 1.2 BBLS/MIN. GOOD CIRC. OUT INTER. CASING @ SURFACE. MU 5.5" CIRC. TIH 13 STDS & 1 JT TO 861'. SET CIRC @ 861'. **PUMP CEMENT PLUG #8 (NAC TOP)** 74 SXS 15.1 BBLS, 1.15, 15.8#, 5 GAL/SX. TOC @ 761', BOC @ 911'. LD 5 JTS. 18 SXS BETWEEN 9-7/8 & 7-5/8, 6 SXS UNDER CIRC & 12 SXS ON TOP OF CIRC. 38 SXS OUT INTO FORMATION. TOO H 11 STDS. WOC TIH & TAG PLUG #8 @ 856'. HAVE TO RE-PUMP PLUG #8 TO COVER NAC TOP. **PUMP CEMENT PLUG #8B (NAC TOP)** 18 SXS 3.5 BBLS, 1.15, 15.8#, 5 GAL/SX. TOC @ 706', BOC @ 856'. LD 5 JTS. TOO H 11 STDS. WOC OVERNIGHT. SISW, DEBRIEF CREW. SDFN. **(NMOCD REP EILEEN MEDRANO ON LOCATION)**

5/9/2024 – CHECK PSI ON WELL SITP 0#, SICP 0#, SIICP 0#, BH 0#, BDW 0 MINS. TIH 8 STDS OF 2.375" TBG & TAG PLUG #8B @ 446'. LD 22 JTS. RU WIRELINE, RIH & PERF SQUEEZES HOLES @ 222'. POOH & RD WIRELINE. LW W/24 BBLS & PUMP 58 BBLS. GOOD CIRC OUT BH & INTER CASING. **PUMP CEMENT PLUG #9 (SURFACE)** 252 SXS 51.6 BBLS, 1.15, 15.8#, 5 GAL/SX. TOC @ 0', BOC @ 222'. LOST CIRC OUT BH ABOUT 75% THROUGH SURFACE PLUG. **NOTIFIED NMOCD & APPROVED TO RUN POLY PIPE WHEN TOPPING OFF.** WASH OUT BOP OF CEMENT. (NOTIFIED NMOCD MONICA KUEHLING AND BLM OF RIG MOVE YESTERDAY FROM SAN JUAN 28-6 UNIT 67 TO MICHENER LS 2) RD RIG FLOOR. ND BOP & PREP TO CUT OFF WH. CUT OFF WH (TOC IN 5.5" CAS. 14', 7-5/8" INTER 14' & 10.75" SURFACE CAS. 27') WELD ON P&A MARKER. RU 1" POLY LINE & RIH. FILL CASING AND CELLAR WITH 26 SXS OF CEMENT. RIG DOWN RIG AND EQUIPMENT. **(RIG RELEASED @ 14:00 5/09/24)** MOVE OFF LOCATION.

(NMOCD REP EILEEN MEDRANO ON LOCATION)

Tammy Jones

From: Kuehling, Monica, EMNRD <monica.kuehling@emnrd.nm.gov>
Sent: Tuesday, May 7, 2024 1:18 PM
To: John LaMond
Cc: Clay Padgett; Lee Murphy; Farmington Regulatory Techs; Brice Clyde - (C); Rustin Mikeska; Medrano, Eileen, EMNRD
Subject: RE: [EXTERNAL] Hilcorp P&A Variance Request: SAN JUAN 28-6 UNIT 67 (API # 3003907097)

CAUTION: External sender. DO NOT open links or attachments from UNKNOWN senders.

NMOCD approves below

Thank you

Monica Kuehling
Compliance Officer Supervisor
Deputy Oil and Gas Inspector
New Mexico Oil Conservation Division
North District
Office Phone: 505-334-6178 ext. 123
Cell Phone: 505-320-0243
Email - monica.kuehling@emnrd.nm.gov

From: John LaMond <jlamond@hilcorp.com>
Sent: Tuesday, May 7, 2024 11:44 AM
To: Kuehling, Monica, EMNRD <monica.kuehling@emnrd.nm.gov>
Cc: Clay Padgett <cpadgett@hilcorp.com>; Lee Murphy <lmurphy@hilcorp.com>; Farmington Regulatory Techs <FarmingtonRegulatoryTechs@hilcorp.com>; Brice Clyde - (C) <Brice.Clyde@hilcorp.com>; Rustin Mikeska <rmikeska@hilcorp.com>; Medrano, Eileen, EMNRD <Eileen.Medrano@emnrd.nm.gov>
Subject: RE: [EXTERNAL] Hilcorp P&A Variance Request: SAN JUAN 28-6 UNIT 67 (API # 3003907097)

Good afternoon Monica,

After perforating circ holes @ 2,538', we were unable to establish circulation up the 5-1/2" x 7-5/8" casing annulus. As a result, Hilcorp received verbal approval from the NMOCD to adjust Plug #6 to be an inside plug only covering only the KRD, and forego the KRD's 5-1/2" x 7-5/8" casing annulus plug. This plug was pumped with 27sx from 2,360' to 2,588' (KRD top @ 2,488').

This afternoon, we will RIH and tag cement. If we get a good tag, Hilcorp requests to pump the following plug:

- PLUG #7: 36sx of Class G Cement (15.8 PPG, 1.15 yield); OJO Top @ 2,272':
 - TIH and perforate circ perms in the 5-1/2" casing @ 2,322'. Establish circulation up the 5-1/2" x 7-5/8" casing annulus.
 - Circulate 18sx of cement in the 5-1/2" casing X 7-5/8" casing annulus (est. TOC @ +/- 2,122' & est. BOC @ +/- 2,322').
 - Continue pumping an 18 sack balanced cement plug inside the 5-1/2" casing (est. TOC @ +/- 2,172' & est. BOC @ +/- 2,322').
 - WOC for 4 hrs, tag TOC w/ work string. *Note cement plug lengths and volumes account for excess.

The Nacimiento and Surface Casing Shoe plugs will be pumped as approved in the NOI but adjusted for Class G cement.

Please let me know if you have any questions or concerns.

Thanks,

John LaMond

Operations Engineer – Technical Services
Hilcorp Energy Company
1111 Travis
Houston, TX 77002
346-237-2210 (Office)
832-754-9692 (Cell)
jlamond@hilcorp.com

From: Kuehling, Monica, EMNRD <monica.kuehling@emnrd.nm.gov>

Sent: Tuesday, May 7, 2024 7:46 AM

To: John LaMond <jlamond@hilcorp.com>

Cc: Clay Padgett <cpadgett@hilcorp.com>; Lee Murphy <lmurphy@hilcorp.com>; Farmington Regulatory Techs <FarmingtonRegulatoryTechs@hilcorp.com>; Brice Clyde - (C) <Brice.Clyde@hilcorp.com>; Rustin Mikeska <rmikeska@hilcorp.com>; Medrano, Eileen, EMNRD <Eileen.Medrano@emnrd.nm.gov>

Subject: RE: [EXTERNAL] Hilcorp P&A Variance Request: SAN JUAN 28-6 UNIT 67 (API # 3003907097)

CAUTION: External sender. DO NOT open links or attachments from UNKNOWN senders.

NMOCD approval is given to below as long as injection is established otherwise will have to run Kirtland and ojo plug separately.

Thank you

Monica Kuehling
Compliance Officer Supervisor

Deputy Oil and Gas Inspector
New Mexico Oil Conservation Division
North District
Office Phone: 505-334-6178 ext. 123
Cell Phone: 505-320-0243
Email - monica.kuehling@emnrd.nm.gov

From: John LaMond <jlamond@hilcorp.com>

Sent: Tuesday, May 7, 2024 6:38 AM

To: Kuehling, Monica, EMNRD <monica.kuehling@emnrd.nm.gov>

Cc: Clay Padgett <cpadgett@hilcorp.com>; Lee Murphy <lmurphy@hilcorp.com>; Farmington Regulatory Techs <FarmingtonRegulatoryTechs@hilcorp.com>; Brice Clyde - (C) <Brice.Clyde@hilcorp.com>; Rustin Mikeska <rmikeska@hilcorp.com>; John LaMond <jlamond@hilcorp.com>

Subject: RE: [EXTERNAL] Hilcorp P&A Variance Request: SAN JUAN 28-6 UNIT 67 (API # 3003907097)

Good morning Monica,

After perforating circ holes @ 2,834', we were unable to establish circulation up the 5-1/2" x 7-5/8" casing annulus. As a result, Hilcorp received verbal approval from the NMOCD to adjust Plug #5 to be an inside plug only covering only the FRD, and forego the FRD's 5-1/2" x 7-5/8" casing annulus plug. This plug was pumped with 27sx from 2,650' to 2,884' (FRD top @ 2,784').

This morning, we will RIH and tag cement. If we get a good tag, Hilcorp requests to pump the following plug:

- PLUG #6: 80sx of Class G Cement (15.8 PPG, 1.15 yield); KRD Top @ 2,488' | OJO Top @ 2,272':
 - TIH and perforate circ perfs in the 5-1/2" casing @ 2,538. Establish circulation up the 5-1/2" x 7-5/8" casing annulus.
 - Circulate 37sx of cement in the 5-1/2" casing X 7-5/8" casing annulus (est. TOC @ +/- 2,122' & est. BOC @ +/- 2,538').
 - Continue pumping a 43 sack balanced cement plug inside the 5-1/2" casing (est. TOC @ +/- 2,172' & est. BOC @ +/- 2,538').
 - WOC for 4 hrs, tag TOC w/ work string. *Note cement plug lengths and volumes account for excess.

The Nacimiento and Surface Casing Shoe plugs will be pumped as approved in the NOI but adjusted for Class G cement.

Please let me know if you have any questions or concerns.

Thanks,

John LaMond

Operations Engineer – Technical Services
Hilcorp Energy Company
1111 Travis

Houston, TX 77002
346-237-2210 (Office)
832-754-9692 (Cell)
jlamond@hilcorp.com

From: Kuehling, Monica, EMNRD <monica.kuehling@emnrd.nm.gov>

Sent: Monday, May 6, 2024 3:13 PM

To: John LaMond <jlamond@hilcorp.com>

Cc: Clay Padgett <cpadgett@hilcorp.com>; Lee Murphy <lmurphy@hilcorp.com>; Farmington Regulatory Techs <FarmingtonRegulatoryTechs@hilcorp.com>; Brice Clyde - (C) <Brice.Clyde@hilcorp.com>; Rustin Mikeska <rmikeska@hilcorp.com>

Subject: RE: [EXTERNAL] Hilcorp P&A Variance Request: SAN JUAN 28-6 UNIT 67 (API # 3003907097)

CAUTION: External sender. DO NOT open links or attachments from UNKNOWN senders.

NMOCD approves below with circulation through annulus between intermediate string and production string otherwise will need to perforate each formation.

Thank you

Monica Kuehling
Compliance Officer Supervisor
Deputy Oil and Gas Inspector
New Mexico Oil Conservation Division
North District
Office Phone: 505-334-6178 ext. 123
Cell Phone: 505-320-0243
Email - monica.kuehling@emnrd.nm.gov

From: John LaMond <jlamond@hilcorp.com>

Sent: Monday, May 6, 2024 1:56 PM

To: Kuehling, Monica, EMNRD <monica.kuehling@emnrd.nm.gov>

Cc: Clay Padgett <cpadgett@hilcorp.com>; Lee Murphy <lmurphy@hilcorp.com>; Farmington Regulatory Techs <FarmingtonRegulatoryTechs@hilcorp.com>; Brice Clyde - (C) <Brice.Clyde@hilcorp.com>; Rustin Mikeska <rmikeska@hilcorp.com>; John LaMond <jlamond@hilcorp.com>

Subject: RE: [EXTERNAL] Hilcorp P&A Variance Request: SAN JUAN 28-6 UNIT 67 (API # 3003907097)

Good afternoon Monica,

We were successful at pumping Plug #4 as planned. At 3:30 PM we will be tagging our estimated cement top at 2,900'.

If we get a good tag, Hilcorp requests to pump the following plug:

- PLUG #5: 141sx of Class G Cement (15.8 PPG, 1.15 yield); FRD Top @ 2,784' | KRD Top @ 2,488' | OJO Top @ 2,272':
 - TIH and perforate circ perms in the 5-1/2" casing @ 2,834'. Establish circulation up the 5-1/2" x 7-5/8" casing annulus.
 - Circulate 64sx of cement in the 5-1/2" casing X 7-5/8" casing annulus (est. TOC @ +/- 2,100' & est. BOC @ +/- 2,834').
 - Continue pumping a 77 sack balanced cement plug inside the 5-1/2" casing (est. TOC @ +/- 2,172' & est. BOC @ +/- 2,834').
 - WOC for 4 hrs, tag TOC w/ work string. *Note cement plug lengths and volumes account for excess.

The Nacimiento and Surface Casing Shoe plugs will be pumped as approved in the NOI.

Please let me know if you have any questions or concerns.

Thanks,

John LaMond

Operations Engineer – Technical Services

Hilcorp Energy Company

1111 Travis

Houston, TX 77002

346-237-2210 (Office)

832-754-9692 (Cell)

jlamond@hilcorp.com

From: Kuehling, Monica, EMNRD <monica.kuehling@emnrd.nm.gov>

Sent: Monday, May 6, 2024 11:26 AM

To: John LaMond <jlamond@hilcorp.com>

Cc: Clay Padgett <cpadgett@hilcorp.com>; Lee Murphy <lmurphy@hilcorp.com>; Farmington Regulatory Techs <FarmingtonRegulatoryTechs@hilcorp.com>; Brice Clyde - (C) <Brice.Clyde@hilcorp.com>; Rustin Mikeska <rmikeska@hilcorp.com>

Subject: RE: [EXTERNAL] Hilcorp P&A Variance Request: SAN JUAN 28-6 UNIT 67 (API # 3003907097)

CAUTION: External sender. DO NOT open links or attachments from UNKNOWN senders.

OK Thank you

From: John LaMond <jlamond@hilcorp.com>

Sent: Monday, May 6, 2024 9:52 AM

To: Kuehling, Monica, EMNRD <monica.kuehling@emnrd.nm.gov>

Cc: Clay Padgett <cpadgett@hilcorp.com>; Lee Murphy <lmurphy@hilcorp.com>; Farmington Regulatory Techs <FarmingtonRegulatoryTechs@hilcorp.com>; Brice Clyde - (C) <Brice.Clyde@hilcorp.com>; Rustin Mikeska <rmikeska@hilcorp.com>; John LaMond <jlamond@hilcorp.com>

Subject: RE: [EXTERNAL] Hilcorp P&A Variance Request: SAN JUAN 28-6 UNIT 67 (API # 3003907097)

Monica,

I noticed that the subject line contained the incorrect unit name. I updated the subject line to the correct unit name and added the API number for reference.

This is for record only.

Thanks,

John LaMond

Operations Engineer – Technical Services

Hilcorp Energy Company

1111 Travis

Houston, TX 77002

346-237-2210 (Office)

832-754-9692 (Cell)

jlamond@hilcorp.com

From: Kuehling, Monica, EMNRD <monica.kuehling@emnrd.nm.gov>

Sent: Monday, May 6, 2024 10:46 AM

To: John LaMond <jlamond@hilcorp.com>

Cc: Clay Padgett <cpadgett@hilcorp.com>; Lee Murphy <lmurphy@hilcorp.com>; Farmington Regulatory Techs <FarmingtonRegulatoryTechs@hilcorp.com>; Brice Clyde - (C) <Brice.Clyde@hilcorp.com>; Rustin Mikeska <rmikeska@hilcorp.com>

Subject: RE: [EXTERNAL] Hilcorp P&A Variance Request: San Juan 28-7 Unit 67

CAUTION: External sender. DO NOT open links or attachments from UNKNOWN senders.

NMOCD approves the addition of the retainer at 2982 with additional cement

Thank you

Monica Kuehling

Compliance Officer Supervisor

Deputy Oil and Gas Inspector

New Mexico Oil Conservation Division

North District

Office Phone: 505-334-6178 ext. 123

Cell Phone: 505-320-0243

Email - monica.kuehling@emnrd.nm.gov

From: John LaMond <jlamond@hilcorp.com>

Sent: Monday, May 6, 2024 9:42 AM

To: Kuehling, Monica, EMNRD <monica.kuehling@emnrd.nm.gov>

Cc: Clay Padgett <cpadgett@hilcorp.com>; Lee Murphy <lmurphy@hilcorp.com>; Farmington Regulatory Techs <FarmingtonRegulatoryTechs@hilcorp.com>; Brice Clyde - (C) <Brice.Clyde@hilcorp.com>; Rustin Mikeska <rmikeska@hilcorp.com>

Subject: RE: [EXTERNAL] Hilcorp P&A Variance Request: San Juan 28-7 Unit 67

Good morning Monica,

After further discussion, Hilcorp received verbal approval from the NMOCD to adjust the plug outlined in the previous email to include setting a CICR. The new plug design was verbally approved by the NMOCD as follows:

- PLUG #4: 209sx of Class G Cement (15.8 PPG, 1.15 yield); PC Top @ 3,032' | FRD Top @ 2,784' | KRD Top @ 2,488' | OJO Top @ 2,272':
 - TIH w/ **5-1/2"** CICR and set @ **2,982'**.
 - Pump 193sx of cement in the 7-5/8" casing X 9-7/8" open hole annulus (est. **TOC @ +/- 2,000'** & est. **BOC @ +/- 3,032'**).
 - Pump an additional 6sx of cement beneath the 5-1/2" CICR (est. **TOC @ +/- 2,982'** & est. **BOC @ +/- 3,032'**).
 - Sting out of retainer, pump a 10 sack balanced cement plug on top of the CICR. (est. **TOC @ +/- 2,900'** & est. **BOC @ +/- 2,982'**).
 - WOC for 4 hrs, tag TOC w/ work string. *Note cement plug lengths and volumes account for excess.
 - Note that the outside plug here covers the PC, FRD, KRD, & OJO. The inside plug here only covers the PC, and verbal approval was given by the NMOCD to forego the PC's 5-1/2" x 7-5/8" casing annulus plug.
 - After WOC, Hilcorp will perforate @ 2,834' (50' below the FRD top) to attempt to establish circulation up the 5-1/2" x 7-5/8" casing annulus.

Please let me know if you have any questions or concerns.

Thanks,

John LaMond

Operations Engineer – Technical Services

Hilcorp Energy Company

1111 Travis

Houston, TX 77002

346-237-2210 (Office)

832-754-9692 (Cell)

From: John LaMond <jlamond@hilcorp.com>

Sent: Monday, May 6, 2024 10:24 AM

To: Kuehling, Monica, EMNRD <monica.kuehling@emnrd.nm.gov>

Cc: Clay Padgett <cpadgett@hilcorp.com>; Lee Murphy <lmurphy@hilcorp.com>; Farmington Regulatory Techs <FarmingtonRegulatoryTechs@hilcorp.com>; Brice Clyde - (C) <Brice.Clyde@hilcorp.com>; Rustin Mikeska <rmikeska@hilcorp.com>; John LaMond <jlamond@hilcorp.com>

Subject: RE: [EXTERNAL] Hilcorp P&A Variance Request: San Juan 28-7 Unit 67

Good morning Monica,

As discussed on the phone this morning, we waited on cement over the weekend. This morning we showed up on location to find that all strings of casing read 0 psi. Hilcorp received verbal approval from the NMCOD to combine the PC, FRD, KRD, & OJO plugs.

After perforating @ 3,082', Hilcorp was able to establish injection outside of the 7-5/8" intermediate casing but were unable to establish circulation up the 5-1/2" x 7-5/8" casing annulus. Hilcorp then received verbal approval from the NMOCD to perforate @ 3,032' to attempt to establish circulation up the 5-1/2" x 7-5/8" casing annulus. This yielded the same results.

Moving forward, Hilcorp received verbal approval to perform the following:

- PLUG #4: 215sx of Class G Cement (15.8 PPG, 1.15 yield); PC Top @ 3,032' | FRD Top @ 2,784' | KRD Top @ 2,488' | OJO Top @ 2,272':
 - TIH w/ work string to 3,082'. Spot 6sx of cement inside the 5-1/2" (est. **TOC @ +/- 3,032'** & est. **BOC @ +/- 3,082'**).
 - TOO H w/ work string to 2,900'.
 - Pump 193sx of cement in the 7-5/8" casing X 9-7/8" open hole annulus (est. **TOC @ +/- 2,050'** & est. **BOC @ +/- 3,082'**).
 - Leave an additional 16 sack balanced cement plug inside the 5-1/2" casing string. (est. **TOC @ +/- 2,900'** & est. **BOC @ +/- 3,032'**).
 - WOC for 4 hrs, tag TOC w/ work string. *Note cement plug lengths and volumes account for excess.
 - Note that the outside plug here covers the PC, FRD, KRD, & OJO. The inside plug here only covers the PC, and verbal approval was given by the NMOCD to forego the PC's 5-1/2" x 7-5/8" casing annulus plug.
 - After WOC, Hilcorp will perforate @ 2,834' (50' below the FRD top) to attempt to establish circulation up the 5-1/2" x 7-5/8" casing annulus.

Please let me know if you have any questions or concerns.

Thanks,

John LaMond

Operations Engineer – Technical Services

Hilcorp Energy Company

1111 Travis

Houston, TX 77002

346-237-2210 (Office)

832-754-9692 (Cell)

jlamond@hilcorp.com

From: Rustin Mikeska <rmikeska@hilcorp.com>

Sent: Thursday, May 2, 2024 8:51 AM

To: Kuehling, Monica, EMNRD <monica.kuehling@emnrd.nm.gov>

Cc: Clay Padgett <cpadgett@hilcorp.com>; Lee Murphy <lmurphy@hilcorp.com>; John LaMond <jlamond@hilcorp.com>; Farmington Regulatory Techs <FarmingtonRegulatoryTechs@hilcorp.com>; Brice Clyde - (C) <Brice.Clyde@hilcorp.com>

Subject: RE: [EXTERNAL] Hilcorp P&A Variance Request: San Juan 28-7 Unit 67

As discussed, we will execute Plugs #1 - #3 then communicate SIPs on all strings and go from there.

Thanks,

Rustin

From: Kuehling, Monica, EMNRD <monica.kuehling@emnrd.nm.gov>

Sent: Thursday, May 2, 2024 8:39 AM

To: Rustin Mikeska <rmikeska@hilcorp.com>

Cc: Clay Padgett <cpadgett@hilcorp.com>; Lee Murphy <lmurphy@hilcorp.com>; John LaMond <jlamond@hilcorp.com>; Farmington Regulatory Techs <FarmingtonRegulatoryTechs@hilcorp.com>; Brice Clyde - (C) <Brice.Clyde@hilcorp.com>

Subject: RE: [EXTERNAL] Hilcorp P&A Variance Request: San Juan 28-7 Unit 67

CAUTION: External sender. DO NOT open links or attachments from UNKNOWN senders.

Plugs cannot be combined – there is pressure on the bradenhead

Perforating will have to happen – what is your plan on perforating

I don't need sxs – thank you

There may be cement at the collars from 3490 up but nothing else

Monica Kuehling

Compliance Officer Supervisor

Deputy Oil and Gas Inspector

New Mexico Oil Conservation Division

North District

Office Phone: 505-334-6178 ext. 123

Cell Phone: 505-320-0243

Email - monica.kuehling@emnrd.nm.gov

From: Rustin Mikeska <rmikeska@hilcorp.com>

Sent: Thursday, May 2, 2024 6:45 AM

To: Kuehling, Monica, EMNRD <monica.kuehling@emnrd.nm.gov>

Cc: Clay Padgett <cpadgett@hilcorp.com>; Lee Murphy <lmurphy@hilcorp.com>; John LaMond <jlamond@hilcorp.com>; Farmington Regulatory Techs <FarmingtonRegulatoryTechs@hilcorp.com>; Brice Clyde - (C) <Brice.Clyde@hilcorp.com>

Subject: [EXTERNAL] Hilcorp P&A Variance Request: San Juan 28-7 Unit 67

CAUTION: This email originated outside of our organization. Exercise caution prior to clicking on links or opening attachments.

Good morning Monica – The original NOI was submitted when we were using Class III (1.37 yield). The revisions below reflect Class G sack counts.

San Juan 28-6 Unit 67

3003907097

The following cement sack counts reflect Class G (1.15 yield):

- Plug #1: 18sx
- Plug #2: 18sx
- Plug #3: 81sx (16.6 bbl) Class G cmt [75sx pumped below CICR]
- Plug #4: 231sx (47.3 bbl) Class G cmt [38sx sqz in OH annulus, 83sx in csg annulus, 110sx inside csg]
- Plug #5: 72sx (14.7 bbl) Class G cmt [38sx, 7.8 bbl OH squeeze]
- Plug #6: 89sx (18.2 bbl) Class G cmt - top off as needed after cutting wellhead.

We will begin cementing ops today.

Thanks,

Rustin Mikeska

P&A – Petroleum Engineer

Cell: (254) 913-6777

Office: (713) 289-2931

rmikeska@hilcorp.com



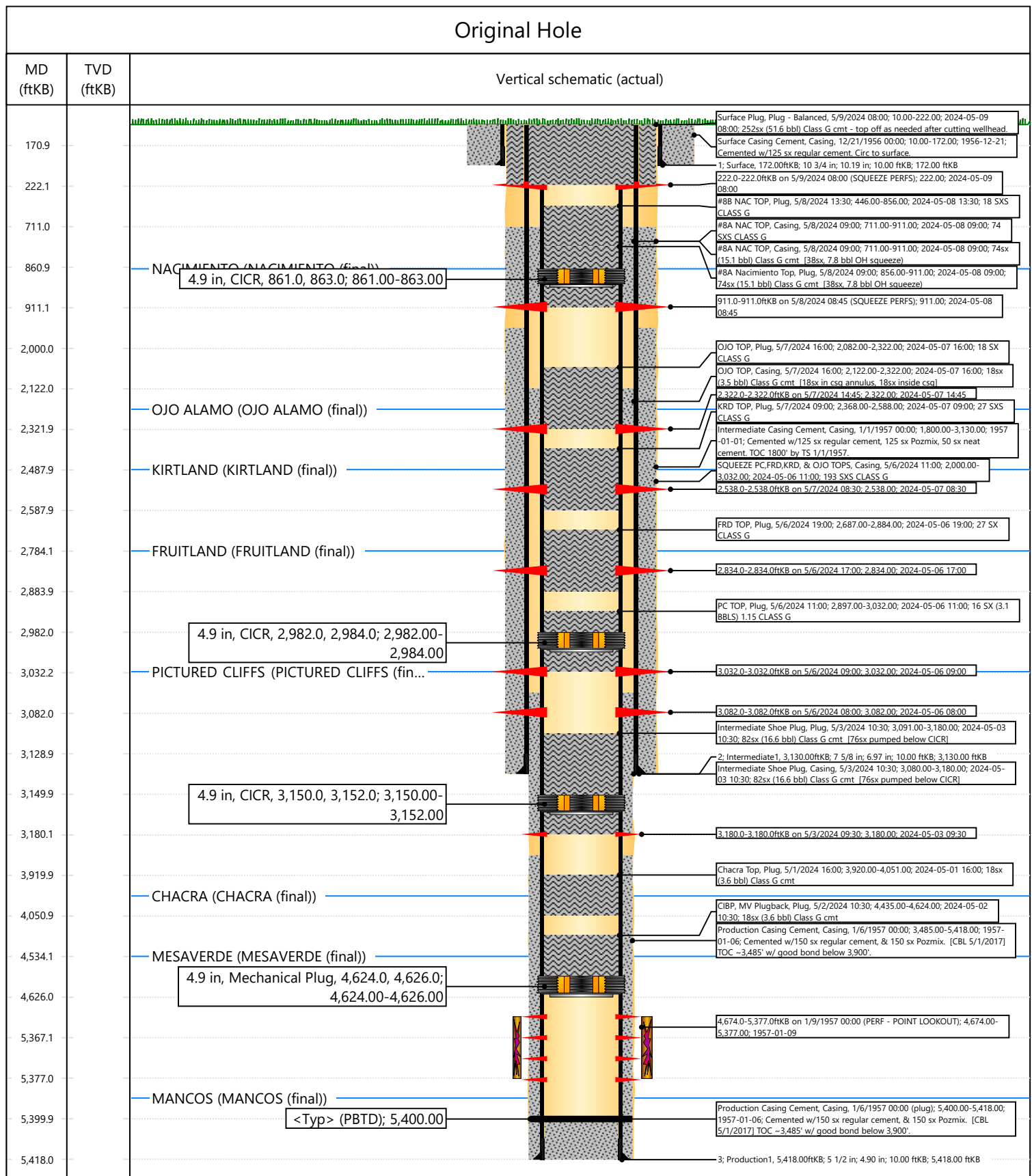
The information contained in this email message is confidential and may be legally privileged and is intended only for the use of the individual or entity named above. If you are not an intended recipient or if you have received this message in error, you are hereby notified that any dissemination, distribution, or copy of this email is strictly prohibited. If you have received this email in error, please immediately notify us by return email or telephone if the



Current Schematic - Version 3

Well Name: SAN JUAN 28-6 UNIT #67

API / UWI 3003907097	Surface Legal Location 014-027N-006W-A	Field Name BLANCO MESAVERDE (PRORATED GAS)	Route 1301	State/Province NEW MEXICO	Well Configuration Type
Ground Elevation (ft) 6,293.00	Original KB/RT Elevation (ft) 6,303.00	Tubing Hanger Elevation (ft)	RKB to GL (ft) 10.00	KB-Casing Flange Distance (ft)	KB-Tubing Hanger Distance (ft)



District I
1625 N. French Dr., Hobbs, NM 88240
Phone:(575) 393-6161 Fax:(575) 393-0720
District II
811 S. First St., Artesia, NM 88210
Phone:(575) 748-1283 Fax:(575) 748-9720
District III
1000 Rio Brazos Rd., Aztec, NM 87410
Phone:(505) 334-6178 Fax:(505) 334-6170
District IV
1220 S. St Francis Dr., Santa Fe, NM 87505
Phone:(505) 476-3470 Fax:(505) 476-3462

State of New Mexico
Energy, Minerals and Natural Resources
Oil Conservation Division
1220 S. St Francis Dr.
Santa Fe, NM 87505

CONDITIONS

Action 342976

CONDITIONS

Operator: HILCORP ENERGY COMPANY 1111 Travis Street Houston, TX 77002	OGRID: 372171
	Action Number: 342976
	Action Type: [C-103] Sub. Plugging (C-103P)

CONDITIONS

Created By	Condition	Condition Date
mkuehling	well plugged 5/9/2024	5/15/2024