

U.S. Department of the Interior
BUREAU OF LAND MANAGEMENT

Well Name: MICHENER LS

Well Location: T28N / R9W / SEC 15 /
SENW / 36.665237 / -107.77829

County or Parish/State: SAN
JUAN / NM

Well Number: 2

Type of Well: CONVENTIONAL GAS
WELL

Allottee or Tribe Name:

Lease Number: NMSF077107B

Unit or CA Name:

Unit or CA Number:

US Well Number: 3004507493

Operator: HILCORP ENERGY
COMPANY

Subsequent Report

Sundry ID: 2789899

Type of Submission: Subsequent Report

Type of Action: Plug and Abandonment

Date Sundry Submitted: 05/14/2024

Time Sundry Submitted: 07:08

Date Operation Actually Began: 05/11/2024

Actual Procedure: Hilcorp Energy has plugged and abandoned the subject well on 5/13/2024 per the attached daily reports.

SR Attachments

Actual Procedure

Michener_LS_2_P_A_SR_BLM_Submitted_20240514070733.pdf

Well Name: MICHENER LS

Well Location: T28N / R9W / SEC 15 /
SEW / 36.665237 / -107.77829County or Parish/State: SAN
JUAN / NM

Well Number: 2

Type of Well: CONVENTIONAL GAS
WELL

Allottee or Tribe Name:

Lease Number: NMSF077107B

Unit or CA Name:

Unit or CA Number:

US Well Number: 3004507493

Operator: HILCORP ENERGY
COMPANY**Operator**

I certify that the foregoing is true and correct. Title 18 U.S.C. Section 1001 and Title 43 U.S.C. Section 1212, make it a crime for any person knowingly and willfully to make to any department or agency of the United States any false, fictitious or fraudulent statements or representations as to any matter within its jurisdiction. Electronic submission of Sundry Notices through this system satisfies regulations requiring a

Operator Electronic Signature: PRISCILLA SHORTY

Signed on: MAY 14, 2024 07:08 AM

Name: HILCORP ENERGY COMPANY

Title: Regulatory Technician

Street Address: 382 ROAD 3100

City: AZTEC

State: NM

Phone: (505) 324-5188

Email address: PSHORTY@HILCORP.COM

Field

Representative Name:

Street Address:

City:

State:

Zip:

Phone:

Email address:

BLM Point of Contact

BLM POC Name: MATTHEW H KADE

BLM POC Title: Petroleum Engineer

BLM POC Phone: 5055647736

BLM POC Email Address: MKADE@BLM.GOV

Disposition: Accepted

Disposition Date: 05/14/2024

Signature: Matthew Kade

MICHENER LS 2

30.045.07493

PLUG AND ABANDONMENT

3/20/2024 – HEC ENGINEER EMAILED KENNY RENNICK, BLM, AND MONICA KUEHLING, NMOCD, REQUESTING ADJUSTMENTS TO THE APPROVED P&A PROCEDURE BASED ON COAs: PLUG #1A WILL BE PUMPED BENEATH THE CICR FROM 2,270' TO 2,370' (50' BENEATH TH PC TOP @ 2,320' PER NMOCD), PLUG #1B WILL BE FROM 1,900' TO 2,270' TO COVER BLM FRUITLAND TOP @ 2,000'. KIRTLAND AND OJO ALAMO WILL BE SEPARATED DUE TO BH PRESSURE. PLUG WILL BE COMBINED IF BH PRESSURE IS SHUT OFF BEFORE PUMPING KIRTLAND PLUG. NACIMIENTO PLUG IS ELIMINATED SINCE FORMATION IS AT SURFACE. BLM AND NMOCD APPROVED CHANGES. BLM RECOMMENDED PRESSURE TESTING AFTER PLUG 1A.

5/11/2024 – MIRU. CHECK PSI ON WELL SITP 50#, SICP 50#, BH 22#, BDW 8 MINS. ND WH, NU BOP, PRESSURE TEST & FUNCTION TEST BOP'S & RU RIG FLOOR. PULL TBG HANGER @ 5.8K. LD 114 JTS OF 1.66". XO HANDLING TOOLS & PIPE RAMS TO 2.375". MU 5.5" CICR. PU 72 JTS OF 2.375" TBG TO 2,270'. TALLY, STRAP & RABBIT TBG. SET CICR @ 2,270'. LOAD TBG. GOOD INJ RATE UNDER CICR @ 1.7BBLS/MIN & 36 PSI. PUMP CEMENT PLUG #1A (PC PERFS) 17 SXS 3.4 BBLS, 1.15, 15.8#, 5 GAL/SX TOC @ 2,270', BOC @ 2,370'. 17 SXS UNDER CICR. STING OUT CICR. LW. PT TO 560 PSI & FAILED. TOO H 36 STDS OF 2.375" TBG. LD SETTING TOOL. RU WIRELINE, RUN CBL FROM 2,270' TO SURFACE. POOH R/D WIRELINE. MU TAG SUB. TIH 36 STDS TO 2,270'. PUMP CEMENT PLUG #1B (PC & FRD TOPS) 49 SXS 9.9 BBLS, 1.15, 15.8#, 5 GAL/SX BOC @ 2,270'. BLM REP. MONTY GOMEZ NOT ON LOCATION JUST UPDATES BY PHONE. LD 14 JTS & R/O 15 BBLS. TOO H & WOC #1B PLUG OVER THE WEEKEND. SDFN.

5/12/2024 – HEC ENGINEER SENT KENNY RENNICK, BLM, AND MONICA KUEHLING, NMOCD, THE CBL THAT WAS RUN ON 5/11/2024. VERBAL APPROVAL WAS GIVEN BY BLM & NMOCD TO PROCEED WITH PLUG 1A & 1B BASED ON THE RESULTS OF THE CBL.

5/13/2024 - CHECK PSI ON WELL SITP 0#, SICP 0#, BH 0#, BDW 0 MINS. TIH & TAG PLUG #1B @ 1,925'. LW. PT TO 560 PSI & FAILED. LOST 10 PSI EVERY 30 SEC. LD 15 JTS TO 1,465'. HEC ENGINEER SENT AN EMAIL TO KENNY RENNICK, BLM, AND MONICA KUEHLING, NMOCD, NOTING NO BH PRESSURE, TAGGED TOC OF THE PC/FRD PLUG @ 1,925', AND FAILED PT. VERBAL APPROVAL WAS DOCUMENTED TO COMBINE KRD & OJO INSIDE PLUG BASED ON CBL. PUMP CEMENT PLUG #2(KRD, OJO TOPS) 82 SXS 16.7 BBLS, 1.15, 15.8#, 5 GAL/SX BOC @ 1,465'. LD 22 JTS. TOO H & WOC. TIH & TAG PLUG #2 @ 835'. LD 27 JTS. RU WIRELINE, RIH & PERF SQUEEZES HOLES @ 183'. POOH & RD WIRELINE. LW. GOOD CIRC OUT BH @ SURFACE. 2.8 BBLS/MIN @ 100 PSI. PUMP CEMENT PLUG #3 (SURFACE) 72 SXS 14.7 BBLS, 1.15, 15.8#, 5 GAL/SX. TOC @ 0', BOC @ 183'. WOC. RD RIG FLOOR, ND BOP. CUT OFF WH, (TOC IN 5.5" CSG 9' & 9-5/8" SURFACE CSG. 0') WELD ON P&A MARKER. FILL CASING AND CELLAR WITH 21 SXS OF CEMENT. MONTY GOMEZ, BLM REP ON LOCATION. RD RR.

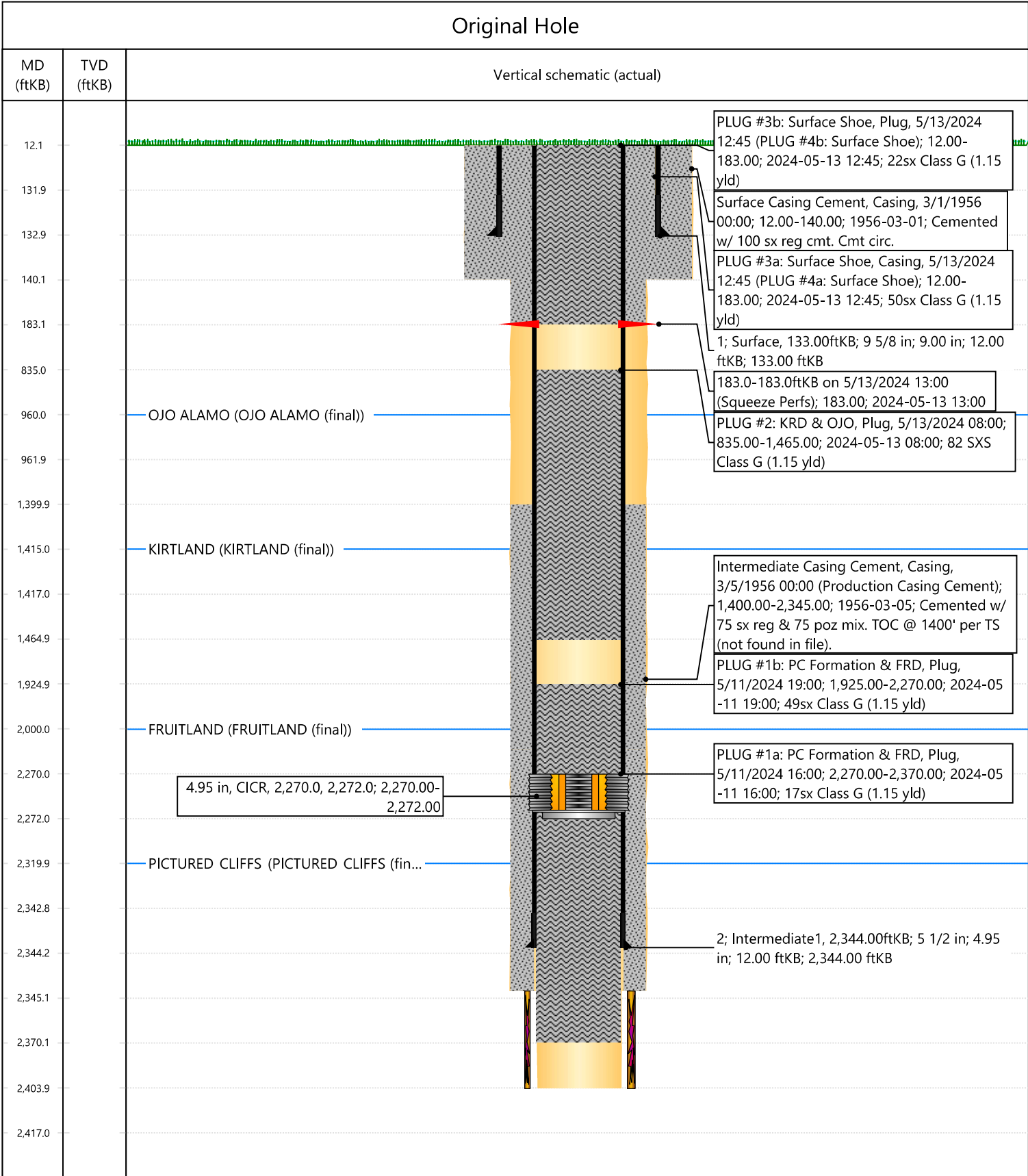
WELL WAS PLUGGED AND ABANDONED ON 5/13/2024.



Current Schematic - Version 3

Well Name: MICHENER LS 2

API / UWI 3004507493	Surface Legal Location 015-028N-009W-F	Field Name PC	Route 0805	State/Province NEW MEXICO	Well Configuration Type
Ground Elevation (ft) 6,017.00	Original KB/RT Elevation (ft) 6,029.00	Tubing Hanger Elevation (ft)	RKB to GL (ft) 12.00	KB-Casing Flange Distance (ft)	KB-Tubing Hanger Distance (ft)



Priscilla Shorty

From: Kuehling, Monica, EMNRD <monica.kuehling@emnrd.nm.gov>
Sent: Monday, May 13, 2024 11:28 AM
To: Rennick, Kenneth G; John LaMond; Kade, Matthew H
Cc: Farmington Regulatory Techs; Brice Clyde - (C); Clay Padgett; Lee Murphy; Rustin Mikeska
Subject: RE: [EXTERNAL] P&A Revision Request for Hilcorp's MICHENER LS 2 (API # 3004507493)

CAUTION: External sender. DO NOT open links or attachments from UNKNOWN senders.

NMOCD approved below verbally

Thank you

Monica Kuehling
Compliance Officer Supervisor
Deputy Oil and Gas Inspector
New Mexico Oil Conservation Division
North District
Office Phone: 505-334-6178 ext. 123
Cell Phone: 505-320-0243
Email - monica.kuehling@emnrd.nm.gov

From: Rennick, Kenneth G <krennick@blm.gov>
Sent: Monday, May 13, 2024 9:55 AM
To: John LaMond <jlamond@hilcorp.com>; Kuehling, Monica, EMNRD <monica.kuehling@emnrd.nm.gov>; Kade, Matthew H <mkade@blm.gov>
Cc: Farmington Regulatory Techs <FarmingtonRegulatoryTechs@hilcorp.com>; Brice Clyde - (C) <Brice.Clyde@hilcorp.com>; Clay Padgett <cpadgett@hilcorp.com>; Lee Murphy <lmurphy@hilcorp.com>; Rustin Mikeska <rmikeska@hilcorp.com>
Subject: Re: [EXTERNAL] P&A Revision Request for Hilcorp's MICHENER LS 2 (API # 3004507493)

To confirm, the BLM finds the procedure appropriate.

Get [Outlook for iOS](#)

From: John LaMond <jlamond@hilcorp.com>
Sent: Monday, May 13, 2024 7:53:20 AM
To: Rennick, Kenneth G <krennick@blm.gov>; Kuehling, Monica, EMNRD <monica.kuehling@emnrd.nm.gov>; Kade, Matthew H <mkade@blm.gov>
Cc: Farmington Regulatory Techs <FarmingtonRegulatoryTechs@hilcorp.com>; Brice Clyde - (C) <Brice.Clyde@hilcorp.com>; Clay Padgett <cpadgett@hilcorp.com>; Lee Murphy <lmurphy@hilcorp.com>; Rustin Mikeska <rmikeska@hilcorp.com>
Subject: RE: [EXTERNAL] P&A Revision Request for Hilcorp's MICHENER LS 2 (API # 3004507493)

Good morning Monica and Kenny,

This morning we showed up on location and determined the following:

- 0 psi on the BH and 0 psi on the production casing. NO BRADENHEAD PRESSURE PRESENT
- Tagged TOC of the PC/FRD inside plug @ 1,925'
- Performed a pressure test (Test failed)

Furthermore, Hilcorp received verbal approval from the NMOCD and BLM to combine the KRD & OJO plugs and make this an inside plug only based on the results of the CBL. The CBL shows good cement 1,366' to 2,270', and then descent cement with some spotty spots between 250' to 1,366'.

- PLUG #2: 71sx of Class G Cement (15.8 PPG, 1.15 yield); KRD Top @ 1,415' | OJO Top @ 960':
 - Pump a 71 sack balanced cement plug inside the 5-1/2" casing (est. **TOC @ +/- 860'** & est. **BOC @ +/- 1,465'**).
 - WOC & Tag
- PLUG #3: 67sx of Class G Cement (15.8 PPG, 1.15 yield); Surf. Casing Shoe @ 133':
 - TIH & perforate circ holes @ +/- 183'. Establish circulation.
 - Pump 8sx of cement in the 5-1/2" casing X 7-7/8" open hole annulus (est. **TOC @ +/- 133'** & est. **BOC @ +/- 183'**). Continue pumping 37sx of cement in the 5-1/2" casing X 9-5/8" casing annulus (est. **TOC @ +/- 0'** & est. **BOC @ +/- 133'**). Pump a 22 sack balanced cement plug inside the 5-1/2" casing (est. **TOC @ +/- 0'** & est. **BOC @ +/- 183'**).
 - WOC & Tag.

Please let me know if you have any questions or concerns with this plan.

Thanks,

John LaMond

Operations Engineer – Technical Services
Hilcorp Energy Company
1111 Travis
Houston, TX 77002
346-237-2210 (Office)
832-754-9692 (Cell)
jlamond@hilcorp.com

From: Rennick, Kenneth G <krennick@blm.gov>

Sent: Sunday, May 12, 2024 4:46 PM

To: John LaMond <jlamond@hilcorp.com>; Kuehling, Monica, EMNRD <monica.kuehling@emnrd.nm.gov>; Kade, Matthew H <mkade@blm.gov>

Cc: Farmington Regulatory Techs <FarmingtonRegulatoryTechs@hilcorp.com>; Brice Clyde - (C) <Brice.Clyde@hilcorp.com>; Clay Padgett <cpadgett@hilcorp.com>; Lee Murphy <lmurphy@hilcorp.com>; Rustin Mikeska <rmikeska@hilcorp.com>; John LaMond <jlamond@hilcorp.com>

Subject: Re: [EXTERNAL] P&A Revision Request for Hilcorp's MICHENER LS 2 (API # 3004507493)

CAUTION: External sender. DO NOT open links or attachments from UNKNOWN senders.

To confirm, the BLM finds the proposal appropriate.

Get [Outlook for iOS](#)

From: John LaMond <jlamond@hilcorp.com>
Sent: Sunday, May 12, 2024 2:38:17 PM
To: Kuehling, Monica, EMNRD <monica.kuehling@emnrd.nm.gov>; Rennick, Kenneth G <krennick@blm.gov>; Kade, Matthew H <mkade@blm.gov>
Cc: Farmington Regulatory Techs <FarmingtonRegulatoryTechs@hilcorp.com>; Brice Clyde - (C) <Brice.Clyde@hilcorp.com>; Clay Padgett <cpadgett@hilcorp.com>; Lee Murphy <lmurphy@hilcorp.com>; Rustin Mikeska <rmikeska@hilcorp.com>; John LaMond <jlamond@hilcorp.com>
Subject: RE: [EXTERNAL] P&A Revision Request for Hilcorp's MICHENER LS 2 (API # 3004507493)

Good afternoon Monica and Kenny,

Please find attached the CBL that was run on 5/11/2024 on the MICHENER LS 2.

Additionally, upon MIRU on the well, the MICHENER LS 2 showed 22 psi on the BH and 50 psi on the production casing. After setting the CICR @ 2,270', a pressure test was performed and failed.

We received verbal approval from the NMOCD & BLM to proceed with PLUG #1a & PLUG #1b based on the results of the CBL.

Moving forward we will tag TOC for Plug #1b in the morning in addition to report whether or not BH pressure is still present. We will contact the BLM and NMOCD with our path forward in the morning after those two steps.

Thanks,

John LaMond

Operations Engineer – Technical Services
Hilcorp Energy Company
1111 Travis
Houston, TX 77002
346-237-2210 (Office)
832-754-9692 (Cell)
jlamond@hilcorp.com

From: Kuehling, Monica, EMNRD <monica.kuehling@emnrd.nm.gov>
Sent: Tuesday, March 26, 2024 5:02 PM
To: Rennick, Kenneth G <krennick@blm.gov>; John LaMond <jlamond@hilcorp.com>; Kade, Matthew H <mkade@blm.gov>
Cc: Farmington Regulatory Techs <FarmingtonRegulatoryTechs@hilcorp.com>; Brice Clyde - (C) <Brice.Clyde@hilcorp.com>; Clay Padgett <cpadgett@hilcorp.com>; Lee Murphy <lmurphy@hilcorp.com>; Max Weaver <mweaver@hilcorp.com>; Rustin Mikeska <rmikeska@hilcorp.com>
Subject: RE: [EXTERNAL] P&A Revision Request for Hilcorp's MICHENER LS 2 (API # 3004507493)

CAUTION: External sender. DO NOT open links or attachments from UNKNOWN senders.

Disregard previous approval email 10:37 March 20, 2024

NMOCD approves below dated email March 25, 2024 at 2:59 p.m.

Thank you

Monica Kuehling
Compliance Officer Supervisor
Deputy Oil and Gas Inspector
New Mexico Oil Conservation Division
North District
Office Phone: 505-334-6178 ext. 123
Cell Phone: 505-320-0243
Email - monica.kuehling@emnrd.nm.gov

From: Rennick, Kenneth G <krennick@blm.gov>
Sent: Monday, March 25, 2024 2:59 PM
To: John LaMond <jlamond@hilcorp.com>; Kuehling, Monica, EMNRD <monica.kuehling@emnrd.nm.gov>; Kade, Matthew H <mkade@blm.gov>
Cc: Farmington Regulatory Techs <FarmingtonRegulatoryTechs@hilcorp.com>; Brice Clyde - (C) <Brice.Clyde@hilcorp.com>; Clay Padgett <cpadgett@hilcorp.com>; Lee Murphy <lmurphy@hilcorp.com>; Max Weaver <mweaver@hilcorp.com>; Rustin Mikeska <rmikeska@hilcorp.com>
Subject: Re: [EXTERNAL] P&A Revision Request for Hilcorp's MICHENER LS 2 (API # 3004507493)

The BLM finds pressure testing after pumping Plug 1a instead of before.

Kenny Rennick

Kenneth (Kenny) Rennick

Petroleum Engineer

Bureau of Land Management
Farmington Field Office
6251 College Blvd
Farmington, NM 87402

Email: krennick@blm.gov
Mobile & Text: 505.497.0019

From: John LaMond <jlamond@hilcorp.com>
Sent: Monday, March 25, 2024 2:40 PM
To: Kuehling, Monica, EMNRD <monica.kuehling@emnrd.nm.gov>; Rennick, Kenneth G <krennick@blm.gov>; Kade, Matthew H <mkade@blm.gov>
Cc: Farmington Regulatory Techs <FarmingtonRegulatoryTechs@hilcorp.com>; Brice Clyde - (C) <Brice.Clyde@hilcorp.com>; Clay Padgett <cpadgett@hilcorp.com>; Lee Murphy <lmurphy@hilcorp.com>; Max Weaver <mweaver@hilcorp.com>; Rustin Mikeska <rmikeska@hilcorp.com>; John LaMond <jlamond@hilcorp.com>
Subject: RE: [EXTERNAL] P&A Revision Request for Hilcorp's MICHENER LS 2 (API # 3004507493)

Monica,

Thank you for your time on the phone. Per our discussion, the only change we plan to make from below is that we will plan to pressure test after pumping Plug 1a instead of before.

Updated Procedure attached.

Kenny, please let me know if the BLM approves of that plan.

Please let me know if you have any concerns with this.

Thanks,

John LaMond

Operations Engineer – Technical Services
Hilcorp Energy Company
1111 Travis
Houston, TX 77002
346-237-2210 (Office)
832-754-9692 (Cell)
jlamond@hilcorp.com

From: Kuehling, Monica, EMNRD <monica.kuehling@emnrd.nm.gov>

Sent: Monday, March 25, 2024 3:19 PM

To: Rennick, Kenneth G <krennick@blm.gov>; John LaMond <jlamond@hilcorp.com>; Kade, Matthew H <mkade@blm.gov>

Cc: Farmington Regulatory Techs <FarmingtonRegulatoryTechs@hilcorp.com>; Brice Clyde - (C) <Brice.Clyde@hilcorp.com>; Clay Padgett <cpadgett@hilcorp.com>; Lee Murphy <lmurphy@hilcorp.com>; Max Weaver <mweaver@hilcorp.com>; Rustin Mikeska <rmikeska@hilcorp.com>

Subject: RE: [EXTERNAL] P&A Revision Request for Hilcorp's MICHENER LS 2 (API # 3004507493)

CAUTION: External sender. DO NOT open links or attachments from UNKNOWN senders.

NMOCD approval is given to below.

Submit log for review prior to continuing after plug 1a

Thank you

Monica Kuehling
Compliance Officer Supervisor
Deputy Oil and Gas Inspector
New Mexico Oil Conservation Division
North District
Office Phone: 505-334-6178 ext. 123
Cell Phone: 505-320-0243
Email - monica.kuehling@emnrd.nm.gov

From: Rennick, Kenneth G <krennick@blm.gov>
Sent: Wednesday, March 20, 2024 10:37 AM
To: John LaMond <jlamond@hilcorp.com>; Kuehling, Monica, EMNRD <monica.kuehling@emnrd.nm.gov>; Kade, Matthew H <mkade@blm.gov>
Cc: Farmington Regulatory Techs <FarmingtonRegulatoryTechs@hilcorp.com>; Brice Clyde - (C) <Brice.Clyde@hilcorp.com>; Clay Padgett <cpadgett@hilcorp.com>; Lee Murphy <lmurphy@hilcorp.com>; Max Weaver <mweaver@hilcorp.com>; Rustin Mikeska <rmikeska@hilcorp.com>
Subject: Re: [EXTERNAL] P&A Revision Request for Hilcorp's MICHENER LS 2 (API # 3004507493)

The BLM finds the proposal appropriate.

Kenneth (Kenny) Rennick

Petroleum Engineer

Bureau of Land Management
Farmington Field Office
6251 College Blvd
Farmington, NM 87402

Email: krennick@blm.gov
Mobile & Text: 505.497.0019

From: John LaMond <jlamond@hilcorp.com>
Sent: Wednesday, March 20, 2024 9:21 AM
To: Kuehling, Monica, EMNRD <monica.kuehling@emnrd.nm.gov>; Rennick, Kenneth G <krennick@blm.gov>; Kade, Matthew H <mkade@blm.gov>
Cc: Farmington Regulatory Techs <FarmingtonRegulatoryTechs@hilcorp.com>; Brice Clyde - (C) <Brice.Clyde@hilcorp.com>; Clay Padgett <cpadgett@hilcorp.com>; Lee Murphy <lmurphy@hilcorp.com>; Max Weaver <mweaver@hilcorp.com>; Rustin Mikeska <rmikeska@hilcorp.com>; John LaMond <jlamond@hilcorp.com>
Subject: [EXTERNAL] P&A Revision Request for Hilcorp's MICHENER LS 2 (API # 3004507493)

This email has been received from outside of DOI - Use caution before clicking on links, opening attachments, or responding.

Good afternoon Monica and Kenny,

Hilcorp is planning to work on the MICHENER LS 2 (API # 3004507493) P&A in the near future.

I have attached the approved P&A NOI, as well as an updated procedure based on the COAs in the approved NOI.

Based on the COAs, Hilcorp requests the following adjustments to the approved procedure:

- Plug #1a will be pumped beneath the CICR set at 2,270' from 2,270' to 2,370' (50' beneath the PC Top @ 2,320' as requested by NMOCD).
- Plug #1b will be now be pumped from 1,900' to 2,270' to cover the BLM Fruitland Top @ 2,000'.
- The Kirtland and Ojo Alamo plugs are now separated due to BH pressure. This plug will potentially be combined if the BH pressure is shut off before pumping the Kirtland plug.
- The Nacimiento plug is now eliminated since the formation is at surface. The surface plug now begins at 183' (Surface casing shoe @ 133').
- Please see details below (and attached) for the new Plug design based on the COAs.



HILCORP ENERGY COMPANY
MICHENER LS 2
P&A NOI

API #: 3004507493

JOB PROCEDURES

1. Contact NMOCD and BLM (where applicable) 24 hours prior to MIRU.
2. Hold pre-job safety meeting. Verify cathodic is off. Comply with all NMOCD, BLM, and HEC safety and environmental regulations.
3. MIRU service rig and associated equipment; NU and test BOP.
4. POOH w/ 1-1/4" tubing.
5. Set a 5-1/2" CICR at +/- 2,270' to isolate the **PC Formation**.
6. Load the well as needed. Pressure test the casing above the plug to **560 psig**.
7. Sting into 5-1/2" CICR at +/- 2,270'.
8. **PLUG #1a: 17sx of Class G Cement (15.8 PPG, 1.15 yield); PC Perfs @ 2,345' | PC Top @ 2,320' | FRD Top @ 2,000'**:
 Pump 8sx of cement beneath the 5-1/2" CICR into the 7-7/8" open hole (est. **TOC @ +/- 2,344'** & est. **BOC @ +/- 2,370'**). Continue pumping 9sx of cement beneath the 5-1/2" CICR inside the 5-1/2" casing (est. **TOC @ +/- 2,270'** & est. **BOC @ +/- 2,344'**). *Note - If the pressure test against the CICR (Step #6) fails, PLUG #1a will be pumped after running the CBL (Step #10).
9. POOH w/ work string.
10. RU Wireline. Run CBL. Record Top of Cement. All subsequent plugs below are subject to change pending CBL results.
11. PU & TIH w/ work string to CICR @ +/- 2,270'.
12. **PLUG #1b: 43sx of Class G Cement (15.8 PPG, 1.15 yield); PC Perfs @ 2,345' | PC Top @ 2,320' | FRD Top @ 2,000'**:
 Pump a 43 sack balanced cement plug on top of the CICR. (est. **TOC @ +/- 1,900'** & est. **BOC @ +/- 2,270'**). WOC for 4 hrs, tag TOC w/ work string. *Note cement plug lengths and volumes account for excess.
13. POOH w/ work string. TIH & perforate squeeze holes @ +/- 1,465'. RIH w/ 5-1/2" CICR and set CICR @ +/- 1,415'. TIH w/ work string & sting into CICR. Establish injection.
14. **PLUG #2: 49sx of Class G Cement (15.8 PPG, 1.15 yield); KRD Top @ 1,415'**:
 Pump 31sx of cement in the 5-1/2" casing X 7-7/8" open hole annulus (est. **TOC @ +/- 1,265'** & est. **BOC @ +/- 1,465'**). Pump an additional 6sx of cement beneath the 5-1/2" CICR (est. **TOC @ +/- 1,415'** & est. **BOC @ +/- 1,465'**). Sting out of retainer, pump a 12 sack balanced cement plug on top of the CICR. (est. **TOC @ +/- 1,315'** & est. **BOC @ +/- 1,415'**). WOC for 4 hrs, tag TOC w/ work string. *Note cement plug lengths and volumes account for excess.
15. POOH w/ work string. TIH & perforate squeeze holes @ +/- 1,010'. RIH w/ 5-1/2" CICR and set CICR @ +/- 960'. TIH w/ work string & sting into CICR. Establish injection.
16. **PLUG #3: 49sx of Class G Cement (15.8 PPG, 1.15 yield); OJO Top @ 960'**:
 Pump 31sx of cement in the 5-1/2" casing X 7-7/8" open hole annulus (est. **TOC @ +/- 810'** & est. **BOC @ +/- 1,010'**). Pump an additional 6sx of cement beneath the 5-1/2" CICR (est. **TOC @ +/- 960'** & est. **BOC @ +/- 1,010'**). Sting out of retainer, pump a 12 sack balanced cement plug on top of the CICR. (est. **TOC @ +/- 860'** & est. **BOC @ +/- 960'**). WOC for 4 hrs, tag TOC w/ work string. *Note cement plug lengths and volumes account for excess.
17. POOH w/ work string. TIH & perforate squeeze holes @ +/- 183'. Establish circulation.
18. **PLUG #4: 67sx of Class G Cement (15.8 PPG, 1.15 yield); Surf. Casing Shoe @ 133'**:
 Pump 8sx of cement in the 5-1/2" casing X 7-7/8" open hole annulus (est. **TOC @ +/- 133'** & est. **BOC @ +/- 183'**). Continue pumping 37sx of cement in the 5-1/2" casing X 9-5/8" casing annulus (est. **TOC @ +/- 0'** & est. **BOC @ +/- 133'**). Pump an 22 sack balanced cement plug inside the 5-1/2" casing (est. **TOC @ +/- 0'** & est. **BOC @ +/- 183'**). WOC for 4 hrs, tag TOC w/ work string.
19. ND BOP, cut off casing below casing flange. Top off cement in surface casing annulus, if needed. Install a P&A marker with cement to comply with regulations. Rig down, move off location, cut off anchors, and restore location.

Do the NMOCD and BLM approve of the revised procedure?

Thanks,

John LaMond

Operations Engineer – Technical Services

District I
1625 N. French Dr., Hobbs, NM 88240
Phone:(575) 393-6161 Fax:(575) 393-0720

District II
811 S. First St., Artesia, NM 88210
Phone:(575) 748-1283 Fax:(575) 748-9720

District III
1000 Rio Brazos Rd., Aztec, NM 87410
Phone:(505) 334-6178 Fax:(505) 334-6170

District IV
1220 S. St Francis Dr., Santa Fe, NM 87505
Phone:(505) 476-3470 Fax:(505) 476-3462

State of New Mexico
Energy, Minerals and Natural Resources
Oil Conservation Division
1220 S. St Francis Dr.
Santa Fe, NM 87505

CONDITIONS

Action 344302

CONDITIONS

Operator: HILCORP ENERGY COMPANY 1111 Travis Street Houston, TX 77002	OGRID: 372171
	Action Number: 344302
	Action Type: [C-103] Sub. Plugging (C-103P)

CONDITIONS

Created By	Condition	Condition Date
mkuehling	schematic doesn't show cement on outside at ojo - log showed cement - well plugged 5/13/2024	5/16/2024