

Well Name: CARSON SRC	Well Location: T30N / R5W / SEC 2 / SWNW / 36.84505 / -107.333375	County or Parish/State: RIO ARRIBA / NM
Well Number: 4	Type of Well: CONVENTIONAL GAS WELL	Allottee or Tribe Name:
Lease Number: NMNM4454	Unit or CA Name:	Unit or CA Number:
US Well Number: 3003926461	Operator: HILCORP ENERGY COMPANY	

Subsequent Report

Sundry ID: 2789737

Type of Submission: Subsequent Report	Type of Action: Recompletion
Date Sundry Submitted: 05/13/2024	Time Sundry Submitted: 11:35
Date Operation Actually Began: 04/16/2024	

Actual Procedure: The following well has been recompleted into the Mesaverde and is now producing as a DHC with the existing Dakota. Please see the attached for the recompletion operations.

SR Attachments

Actual Procedure

CARSON_SRC_4_RC_SR_Writeup_20240513113509.pdf

Well Name: CARSON SRC	Well Location: T30N / R5W / SEC 2 / SWNW / 36.84505 / -107.333375	County or Parish/State: RIO ARRIBA / NM
Well Number: 4	Type of Well: CONVENTIONAL GAS WELL	Allottee or Tribe Name:
Lease Number: NMNM4454	Unit or CA Name:	Unit or CA Number:
US Well Number: 3003926461	Operator: HILCORP ENERGY COMPANY	

Operator

I certify that the foregoing is true and correct. Title 18 U.S.C. Section 1001 and Title 43 U.S.C. Section 1212, make it a crime for any person knowingly and willfully to make to any department or agency of the United States any false, fictitious or fraudulent statements or representations as to any matter within its jurisdiction. Electronic submission of Sundry Notices through this system satisfies regulations requiring a

Operator Electronic Signature: AMANDA WALKER

Signed on: MAY 13, 2024 11:35 AM

Name: HILCORP ENERGY COMPANY

Title: Operations/Regulatory Technician

Street Address: 1111 TRAVIS ST

City: HOUSTONState: TX

Phone: (346) 237-2177

Email address: MWALKER@HILCORP.COM

Field

Representative Name:

Street Address:

City:State:Zip:

Phone:

Email address:

BLM Point of Contact

BLM POC Name: MATTHEW H KADE

BLM POC Title: Petroleum Engineer

BLM POC Phone: 5055647736

BLM POC Email Address: MKADE@BLM.GOV

Disposition: Accepted

Disposition Date: 05/14/2024

Signature: Matthew Kade



Well Operations Summary

Well Name: CARSON SRC #4

API: 3003926461

Field: BASIN DAKOTA (PRORATED GAS)

State: NEW MEXICO

Permit to Drill (PTD) #:

Sundry #:

Rig/Service: DWS 30

Jobs

Actual Start Date: 4/16/2024

End Date:

Report Number

1

Report Start Date

4/16/2024

Report End Date

4/16/2024

Operation

MOVE FROM THE SAN JUAN 30-5 #97 TO THE CARSON SRC #4 (14 MILE FIELD MOVE). SPOT RIG AND EQUIPMENT.

RIG UP

SITP: 100 PSI

SICP: 150 PSI

SIIC: 33 PSI

SIBH: 0 PSI

BLOW DOWN WELL 5 MIN.

SLICKLINE SET 3-SLIP STOP AND PUNCH HOLE ON TUBING

NIPPLE DOWN WELLHEAD, NIPPLE UP BOPE. RIG UP FLOOR.

FUNCTION TEST BOPE (GOOD).

SECURE WELL AND LOCATION.

TRAVEL TO YARD

Report Number

2

Report Start Date

4/17/2024

Report End Date

4/17/2024

Operation

CREW TRAVELED TO LOCATION.

SERVICE AND START EQUIPMENT

SITP: 240 PSI

SICP: 240 PSI

SIIC: 48 PSI

SIBH: 0 PSI

BLOW DOWN 5 MIN.

RIG UP FLOOR.

PULL AND LAY DOWN TUBING HANGER.

DID NOT TAG FOR FILL.

SAFETY MEETING, RIG UP TUBOSCOPE LAY DOWN TOOL

TRIP OUT OF HOLE INSPECTING 2 3/8" PRODUCTION TUBING.

4- YELLOW

11- BLUE

6- GREEN

234- RED

WAIT ON REPLACEMENT PARTS FOR SCAN UNIT.

RIG DOWN TUBOSCOPE SCANNING EQUIPMENT.

DOWNGRADES DUE PITTING. AND PIN EROSION

NO HOLES FOUND

PICK UP 3 7/8" BIT AND STRING MILL AND TRIP IN THE HOLE WITH THE RIG STOCK TUBING.

WAIT ON AND CHANGE OUT TUBING FLOAT, TRIP IN HOLE PICKING UP REPLACEMENT TUBING TO 2500'.

SECURE WELL AND LOCATION

TRAVEL TO YARD

Report Number

3

Report Start Date

4/18/2024

Report End Date

4/18/2024

Operation

CREW TRAVELED TO LOCATION.

SERVICE AND START EQUIPMENT

SITP: 40 PSI

SICP: 0 PSI

SIIC: 0 PSI

SIBH: 0 PSI

BLOW DOWN 1 MIN

CONTINUE TO TRIP IN HOLE PICKING UP 172 JOINTS OF TUBING WITH STRING MILL TO 7935'.

TRIP OUT OF THE HOLE, LAY DOWN STRING MILL

PICK UP 4 1/2" CIBP AND TRIP IN THE HOLE.

SET CIBP AT 7885'. LOAD HOLE AND CIRCULATE OUT GAS CUT FLUID WITH 110 BBLs OF BIOCIDAL WATER.

PRESSURE TEST CASING TO 600 PSI, PRESSURE CONTINUED TO CLIMB.

TRIP OUT OF THE HOLE LAYING DOWN 84 JOINTS TUBING.

SECURE WELL AND LOCATION



Well Operations Summary

Well Name: CARSON SRC #4

API: 3003926461

Field: BASIN DAKOTA (PRORATED GAS)

State: NEW MEXICO

Sundry #:

Rig/Service: DWS 30

Operation

TRAVEL TO YARD

Report Number
4Report Start Date
4/19/2024Report End Date
4/19/2024

Operation

CREW TRAVELED TO LOCATION.

SERVICE AND START EQUIPMENT

SITP: 0 PSI
SICP: 0 PSI
SIIC: 20 PSI
SIBH: 0 PSI
NO BLOW DOWN

FINISH TRIP OUT OF THE HOLE.

RIG UP THE WIRELINE GROUP AND SHOOT 4 SQUEEZE HOLES AT 5205'

ESTABLISH INJECTION RATE , 1000 PSI AT 1.5 BPM.

INCREASE RATE 1000 PSI AT 2.5 BPM. PUMP 120 BBLS OF WATER WITH NO RETURNS OUT 7" CASING CAPACITY IS 105 BBLS.

PICK UP CEMENT RETAINER AND TRIP IN THE HOLE, **SET RETAINER AT 5180'**.

RIG UP AND PUMP ANOTHER 20 BBLS OF WATER INTO SQUEEZE HOLES WITH OUT RETURNS.

PUMP A TOTAL OF 140 BBLS OUT OF SQUEEZE HOLES, CAPACITY IS 105 BBLS.

RIG UP A PLUS.

START TO PUMP WATER AHEAD PRESSURED UP TO 1500 PSI, ATTEMPT TO UNPLUG TUBING WITHOUT SUCCESS

TRIP OUT OF THE HOLE PULLING WET TUBING STRING.

CEMENT RETAINER STINGER PLUGGED WITH COAL FINES.

CLEAN OUT STINGER AND TRIP IN THE HOLE.

CIRCULATE ON TOP OF RETAINER TO FLUSH ANY TRASH, STING INTO RETAINER AND ESTABLISH INJECTION RATE OF 800 PSI AT 2 BPM.

SECURE WELL AND LOCATION

TRAVEL TO YARD

Report Number
5Report Start Date
4/20/2024Report End Date
4/20/2024

Operation

CREW TRAVELED TO LOCATION.

SERVICE AND START EQUIPMENT

SITP: 0 PSI
SICP: 0 PSI
SIIC: 20 PSI
SIBH: 0 PSI
NO BLOW DOWN

CIRCULATE ON TOP OF RETAINER TO FLUSH ANY TRASH, STING INTO RETAINER AND ESTABLISH INJECTION RATE OF 800 PSI AT 2 BPM.

MIX AND PUMP CEMENT SQUEEZE AS FOLLOWS:

PUMP 10 BBLS OF WATER AHEAD

170 SACKS CLASS G NEAT CEMENT 15.9# 1.15 YIELD 34.7 BBLS OF SLURRY

PUMP SLURRY WITH TUBING PRESSURE AT 0 PSI, GO TO DISPLACEMENT, PUMP 1/2 BBL AND CEMENT

LOCKED UP, PUMP TO 1400 PSI.

STING OUT OF RETAINER AND BALANCE PLUG. TRIP OUT OF THE HOLE 10 STANDS, 600' TO 4500'

REVERSE OUT AT 1300 PSI WITH 40 BBLS OF WATER RETURNING 9.6 BBLS OF CEMENT.

TRIP IN HOLE TO 4800' AND REVERSE OUT, TUBING IS PLUGGED.

TRIP OUT OF THE HOLE PULLING WET TUBING STRING. 8 JOINTS OF TUBING PLUGGED WITH CEMENT.

ESTIMATE 13.9 BBLS OF CEMENT BELOW RETAINER, 762' OF CEMENT.

CEMENT TOP AT 4443' IF CEMENT WENT UP THE HOLE.

ESTIMATED CEMENT TOP IN 4 1/2" CASING AT 4500'.

SECURE WELL AND LOCATION

TRAVEL TO YARD

Report Number
6Report Start Date
4/22/2024Report End Date
4/22/2024

Operation

CREW TRAVELED TO LOCATION.



Well Operations Summary

Well Name: **CARSON SRC #4**

API: 3003926461

Field: BASIN DAKOTA (PRORATED GAS)

State: NEW MEXICO

Sundry #:

Rig/Service: DWS 30

Operation

SERVICE AND START EQUIPMENT

SITP: 0 PSI
SICP: 0 PSI
SIIC: 80 PSI
SIBH: 0 PSI
NO BLOW DOWN

SPOT IN FLOAT, PICK UP 3 7/8" BLADE BIT WITH 6 - 3 1/8" DRILL COLLARS AND TRIP IN THE HOLE, TAG CEMENT AT 4598'.
PICK UP AND RIG UP POWER SWIVEL.

DRILL 582' OF CEMENT FROM 4598 TO 5180'.

HANG SWIVEL IN THE DERRICK. TRIP OUT LAYING DOWN DRILL OUT JOINTS.

SECURE WELL AND LOCATION

TRAVEL TO YARD

Report Number
7Report Start Date
4/23/2024Report End Date
4/23/2024

Operation

RIG CREW TRAVEL TO LOCATION

SERVICE & START EQUIPMENT

SITP: 0 PSI
SICP: 0 PSI
SIIC: 16 PSI
SIBHP: 0 PSI
NO BLOW DOWN

TOOH PU 3-7/8 BIT TIH TAG CMT RETAINER @5180'. PU & RIG UP PWR SWVL MAKE CONNECTION, ESTAB CIRC W/ FRESH BIO

DRILL OUT CMT RETAINER @ 5180' DRILL OUT CMT & STRINGERS F/ 5,182 - 5,225 FELL THRU GO DOWN TO 5,285, RIG DOWN PWR SWVL

PRESSURE TEST 4.5 CSG TO 560 PSI FOR 30 MINUTES

LAY DOWN 20 JOINTS TOOH

RIG UP THE WIRELINE GROUP RUN CBL W/ 500 PSI FROM 6,100' TO SURFACE RIG DOWN WIRELINE

SHUT IN SECURE WELL & LOCATION

RIG CREW TRAVEL TO YARD

Report Number
8Report Start Date
4/24/2024Report End Date
4/24/2024

Operation

RIG CREW TRAVEL TO LOCATION

SERVICE AND START EQUIPMENT.

SITP: 0 PSI
SICP: 0 PSI
SIIC: 0 PSI
SIBH: 0 PSI
NO BLOW DOWN

LAY DOWN PWR SWVL, RIG MAINTENANCE

PRE MIT TEST, A.BUNNY WITNESSED CHARTED MIT TEST TO 560 PSI FOR 30 MIN GOOD TEST, BH & INT CSG TESTED GOOD

TIH W/ DRILL COLLARS TOOH LAYING DOWN DRILL COLLARS, PU 3.875 STRG MILL TIH WITH TUBING TOOH LAYING DOWN TUBING & STRG MILL

K6160269 to 1708198: 2/3/2024 8:10:30 AM LOGGING RIH W/ 4.5 CBP & **SET CBP @ 6024'** ROH RIG DOWN WIRELINE Page 9 of 33

SECURE WELL AND LOCATION

RIG CREW TRAVEL TO YARD

Report Number
9Report Start Date
4/25/2024Report End Date
4/25/2024


Operation

RIG CREW TRAVEL TO LOCATION

SERVICE AND START EQUIPMENT.

SITP: 0 PSI
SICP: 0 PSI
SIIC: 0 PSI
SIBH: 0 PSI
NO BLOW DOWN

RIG UP BASIN WELL LOGGING, RIH W/ GAMMA RAY & LOG F/ 6,024 TO 3,000'. ROH PICK UP 3.125 X 17.5 (BHC) **PERF POINT LOOKOUT / LOWER MENEFFEE (5695'-5974) 3 SPF 0.35"**. F/ 5973-5974 (2 SPF) 5956-5958 (3 SPF) 5934-5935 (2 SPF) 5880-5881 (2 SPF) 5825-5826 (2 SPF) 5813-5814 (2 SPF) 5788-5790 (3 SPF) 5775-5776 (2 SPF) 5765-5767 (3 SPF) 5706-5708 (3 SPF) 5695-5697 (3 SPF) ROH, RIH W/ 4.5 FRAC THRU PLUG & **SET FRAC THRU PLUG @ 5678'** ROH, PICK UP 3.125 X 17.5 (BHC) **PERF CLIFFHOUSE / UPPER MENEFFEE (5492' - 5660') 3 SPF 0.35"** F/ 5658-5660 (3 SPF) 5646-5648 (3 SPF) 5636-5637 (2 SPF) 5621-5622 (2 SPF) 5591-5594 (4 SPF) 5564-5567 (4 SPF) 5555-5557 (3 SPF) 5514-5515 (2 SPF) 5501-5502 (2 SPF) 5492-5493 (2 SPF) ROH, RIG DOWN WIRELINE



Hilcorp Energy Company

Well Operations Summary

Well Name: CARSON SRC #4

API: 3003926461

Field: BASIN DAKOTA (PRORATED GAS)

State: NEW MEXICO

Sundry #:

Rig/Service: DWS 30

Operation

XO PIPE RAMS & HANDLING TOOLS TO 2-7/8, PU 2-3/8 WL RE-ENTRY GUIDE, 2-7/8 DUAL DISK SUB & 4.5 ASX-1, 4.5 10K FRAC PKR TALLY & START PU 2-7/8, 6.5, P-110 RTS8 FRAC STRG 91 JTS TO 2841'

SHUT IN SECURE WELL & LOCATION

RIG CREW TRAVEL TO YARD

Report Number10

Report Start Date4/26/2024

Report End Date4/26/2024

Operation

RIG CREW TRAVEL TO LOCATION

SERVICE AND START EQUIPMENT.

SITP: 0 PSI
SICP: 0 PSI
SIIC: 0 PSI
SIBH: 0 PSI
NO BLOW DOWN

CONTINUE TO TRIP IN THE HOLE PICKING UP 2 7/8" FRAC STRING
MAKE UP HANGER, PRESSURE TEST HANGER AND FRAC STRING TO 7500 PSI.

LAND HANGER, SET PACKER WITH 15 K COMPRESSION.

FRAC STRING LANDED AS FOLLOWS:

(1)- 2 7/8" X 5K TUBING HANGER (.85")
(1)- 2 7/8"" X 10', PUP JOINT
(1)- 2 7/8"" EUE X RTS8 CHANGE OVER (.64')
(174)- 2 7/8"RTS-8 6.5# P110 (5390.49')
(1)- 2 7/8" X 2' MARKER JOINT
(1)- 2 7/8"RTS-8 6.5# P110 (30.95')
(1)- 2 7/8" EUE X 2 7/8"RTS-8 CHANGE OVER (.69')
(1)- 2 3/8" EUE X 2 7/8" EUE SWEDGE (.38')
(1)- 2 3/8" X 4 1/2" AS1-X 10K FRAC PACKER.(8.02')
(1)- 2 3/8" WIRELINE ENTRY GUIDE (.46")

EOT @ 5455
PACKER TOP @ 5446

LAND HANGER, SET PACKER WITH 15 K COMPRESSION.

FRAC STRING LANDED AS FOLLOWS:

(1)- 2 7/8" X 5K TUBING HANGER (.85")
(1)- 2 7/8"" X 10', PUP JOINT
(1)- 2 7/8"" EUE X RTS8 CHANGE OVER (.64')
(174)- 2 7/8"RTS-8 6.5# P110 (5390.49')
(1)- 2 7/8" X 2' MARKER JOINT
(1)- 2 7/8"RTS-8 6.5# P110 (30.95')
(1)- 2 7/8" EUE X 2 7/8"RTS-8 CHANGE OVER (.69')
(1)- 2 3/8" EUE X 2 7/8" EUE SWEDGE (.38')
(1)- 2 3/8" X 4 1/2" AS1-X 10K FRAC PACKER.(8.02')
(1)- 2 3/8" WIRELINE ENTRY GUIDE (.46")

EOT @ 5455
PACKER TOP @ 5446

RIG DOWN FLOOR, NIPPLE DOWN BOPE,
NIPPLE UP FRAC STACK. PRESSURE TEST TO 8000 PSI.

RU SLICKLINE RIH W/ SPEAR & 1.90 GR BREAK DUAL DISK ROH RD SLICKLINE

RIG DOWN, RIG RELEASED TO THE SAN JUAN 30-5 #92

RIG DOWN, RIG RELEASED TO THE SAN JUAN 30-5 #92

MOVE RIG TO SAN JUAN 30-5 #53M STAGING LOCATION PRIOR TO FRAC.

RIG CREW TRAVEL TO YARD

Report Number11

Report Start Date5/3/2024

Report End Date5/3/2024

Well Name: CARSON SRC #4

API: 3003926461	Field: BASIN DAKOTA (PRORATED GAS)	State: NEW MEXICO
	Sundry #:	Rig/Service: DWS 30

Operation		
MOVE IN AND SPOT GORE N2 SERVICES.		
RIG UP FRAC AND N2 EQUIPMENT. COOL DOWN N2 PUMPS.		
PRIME EQUIPMENT. PRESSURE TEST FLUID LINES TO 7800 PSI. GOOD TEST. PRESSURE TEST N2 LINES TO 7800 PSI. GOOD TEST.		
HELD PRE JOB SAFETY MEETING WITH ALL PERSONAL ON LOCATION.		
POINT LOOKOUT / LOWER MENEFEE STIMULATION: (5695' TO 5974')		
FRAC AT 45 BPM W/ 70 Q N2 FOAM. TOTAL LOAD: 781 BBLS TOTAL SLICKWATER: 769 BBLS TOTAL ACID: 12 BBLS TOTAL 20/40 SAND: 101,768 LBS TOTAL N2: 1,288,000 SCF AVERAGE RATE: 43.7 BPM MAX RATE: 51.3 BPM AVERAGE PRESSURE: 4,925 PSI MAX PRESSURE: 7,500 PSI MAX SAND CONC: 2.0 PPG DOWNHOLE. ISIP: SCREENED OFF		
WELL SCREENED OUT ON 2.0 PPG SAND WITH 101,766 LBS AWAY.		
CALL OUT BLEED DOWN CREW. WAIT ON CREW TO ARRIVE ON LOCATION.		
R/U BLEED DOWN CREW. BLEED DOWN WELL.		
SITP: 2700 PSI 15:20 - OPENED WELL ON 64/64 CHOKE 15:30 - 820 PSI FLOWING PRESSURE 16:30 - 310 PSI FLOWING PRESSURE 17:30 - 260 PSI FLOWING PRESSURE 18:00 - SHUT IN WELL		
RETURNED HEAVY SAND DURING BLEED DOWN. RECOVERED 160 BBLS.		
R/D BLEED DOWN CREW. CREW TRAVELED HOME.		
Report Number 12	Report Start Date 5/4/2024	Report End Date 5/4/2024
Operation		
CREW TRAVELED TO LOCATION.		
HELD SAFETY MEETING.		
R/U DOWN JT. PT LINES TO 7800 PSI. GOOD TEST. FLUSHED WELL TO BOTTOM PERF (GOOD).		
R/U SKLN. RIH TAG PLUG AT 5678'. POH. R/D SLICKLINE.		
DROP BALL. TEST FRAC AND N2 LINES TO 7800 PSI. GOOD TEST. SEAT BALL IN PLUG (GOOD).		
CLIFFHOUSE / UPPER MENEFEE STIMULATION: (5492' TO 5660')		
FRAC AT 50 BPM W/ 70 Q N2 FOAM. TOTAL LOAD: 1272 BBLS TOTAL SLICKWATER: 1260 BBLS TOTAL ACID: 12 BBLS TOTAL 20/40 SAND: 150,994 LBS TOTAL N2: 2,112,000 SCF AVERAGE RATE: 49.8 BPM MAX RATE: 53 BPM AVERAGE PRESSURE: 5,745 PSI MAX PRESSURE: 7,498 PSI MAX SAND CONC: 2.25 PPG DOWNHOLE. ISIP: 2326 PSI 5 MIN: 1417 PSI 10 MIN: 1417 PSI 15 MIN: 1353 PSI		
STAGE PLANNED FOR 100,000 LBS 20/40 SAND.		
SHUT IN WELL. SECURE LOCATION.		
RIG DOWN FRAC, N2 AND WIRELINE EQUIPMENT.		



Well Operations Summary

Well Name: CARSON SRC #4

API: 3003926461

Field: BASIN DAKOTA (PRORATED GAS)

State: NEW MEXICO

Sundry #:

Rig/Service: DWS 30

Report Number 13	Report Start Date 5/4/2024	Report End Date 5/4/2024
---------------------	-------------------------------	-----------------------------

Operation

CREW TRAVEL TO LOCATION. SERVICE AND START EQUIPMENT.
MOVE FROM THE SAN JUAN 30-5 #92 TO THE CARSON SRC #4 (8 MILE FIELD MOVE). SPOT RIG AND EQUIPMENT. STAGE OUT AND WAIT ON FRAC.

RIG UP.

SITP: 2100 PSI

SICP: 0 PSI

SIIC: 53 PSI

SIBH: 0 PSI

BLEED DOWN WELL 2 HOURS

RIG UP BIG RED TO FRAC STACK, EQUIPMENT WASHING OUT, RIG DOWN AND RELEASE FROM LOCATION.

SECURE WELL AND LOCATION. TRAVEL TO YARD.

Report Number 14	Report Start Date 5/5/2024	Report End Date 5/5/2024
---------------------	-------------------------------	-----------------------------

Operation

RIG CREW TRAVEL TO LOCATION

SERVICE AND START EQUIPMENT.

SITP: 240 PSI

SICP: 0 PSI

SIIC: 70 PSI

SIBH: 0 PSI

NO BLEED DOWN

PUMP 20 BBL KILL ON TUBING, INSTALL BPV IN TUBING HANGER.

NIPPLE DOWN FRAC STACK, NIPPLE UP BOPE, RIG UP FLOOR.

PRESSURE TEST BLIND AND PIPE RAMS 250 PSI LOW AND 2500 PSI HIGH.

RELEASE PACKER, PULL TUBING HANGER TO FLOOR.

LUBRICATE BPV OUT. PUMP 40 BBLS KILL, LAY DOWN HANGER WITH 8' PUP JOINT ON HANGER.

TRIP OUT OF HOLE LAYING DOWN 175 JOINTS OF 2 7/8" RTS-8 TUBING.

INSTALL PROTECTORS ON ALL JOINTS.

PUMP 60 BBLS OF WATER TO KEEP TUBING DEAD

CHANGE OUT HANDLING TOOLS TO 2 3/8"

PICK UP 3 7/8" MILL AND TRIP IN THE HOLE PICKING UP 2 3/8" TUBING TO 2990'

RIG CREW TRAVEL TO YARD

RIG CREW TRAVEL TO YARD

Report Number 15	Report Start Date 5/6/2024	Report End Date 5/6/2024
---------------------	-------------------------------	-----------------------------

Operation

CREW TRAVEL TO LOCATION.

SERVICE AND START EQUIPMENT

SITP: 0 PSI

SICP: 300 PSI

SIIC: 50 PSI

SIBH: 0 PSI

BLEED DOWN WELL 1 MINUTE

TRIP IN THE HOLE PICKING UP TUBING, TAG SAND AT 5234'. PLUG #1 IS SET AT 5678'.

UNLOAD WATER AND ESTABLISH CIRCULATION WITH AIR MIST 1300 CFM

WITH 14 BBLS WATER 2 GALLONS OF FOAMER, 2 GALLONS INHIBITOR PER HOUR.

THE WELL STARTED TO UNLOAD CLEANING OUT THE REMAINING SAND.

DRILL PLUG #1 @ 5677', PUMP THRU PLUG AT 5660'. WELL MAKING UP TO 1/2 BUCKET OF SAND DOWN TO 2 CUPS PER SAMPLE.

CLEAN OUT SAND FROM 5680' TO 6024, PLUG #2

DRILL PLUG #2 @ 6023' WITH AIR MIST 1300 CFM

WITH 14 BBLS WATER 1.5 GALLONS OF FOAMER, 1.5 GALLONS INHIBITOR PER HOUR.

F-485 FOAMER- 14 GALLONS.

CRW-9152A INHIB - 14 GALLONS.

DIESEL FUEL - 240 GALLONS.

80 BBLS OF WATER

TRIP OUT OF HOLE TO 5297'.

SECURE WELL AND TRAVEL TO YARD.



Well Operations Summary

Well Name: CARSON SRC #4

API: 3003926461

Field: BASIN DAKOTA (PRORATED GAS)

State: NEW MEXICO

Sundry #:

Rig/Service: DWS 30

Report Number 16	Report Start Date 5/7/2024	Report End Date 5/7/2024
---------------------	-------------------------------	-----------------------------

Operation

CREW TRAVEL TO LOCATION.

SERVICE AND START EQUIPMENT

SITP: 0 PSI

SICP: 1200 PSI

SIBH: 0 PSI

BLEED DOWN WELL 30 MINUTES

TRIP IN HOLE WITH 14 STANDS, TAG PLUG PARTS AT 6871'. PICK UP SWIVEL.
PUSH PLUG PARTS DOWN, HANG BACK SWIVEL,
CONTINUE TO TRIP IN THE HOLE PICKING UP TUBING.
ESTABLISH CIRCULATION WITH AIR MIST 1300 CFM
WITH 14 BBLS WATER 1 GALLON OF FOAMER, 1 GALLON INHIBITOR PER HOUR.
RETURNS ARE UP TO ARE 3 CUPS OF SAND DOWN 1 CUP.
DRILL PLUG #3 AT 7885' CHASE DOWN HOLE AND CLEANOUT TO 8055'
PBTD AT 8061'.

HANG SWIVEL BACK, TRIP OUT OF THE HOLE WITH MILLING ASSEMBLY.

PICK UP BHA AND TRIP IN HOLE DRIFTING TUBING.

LAND TUBING AS FOLLOWS:

- (1)- 2 3/8" PUMP OUT PLUG (.50')
- (1)- 2 3/8" X 1.78 SEAT NIPPLE (1.10')
- (1)- 2 3/8" 4.7# J-55 TBG (31.34')
- (1)- 2 3/8" X 2' MARKER JOINT.
- (251)- 2 3/8" 4.7# J-55 TBG (7904.05')
- (2)- 2 3/8" X 12' PUP JOINT.
- (1)- 2 3/8" 4.7# J-55 TBG (31.50')
- (1)- 2 3/8" X 5K TUBING HANGER

EOT @ 7995'

SEAT NIPPLE @ 7993'

PBTD @ 8061'

CLEANED OUT TO 8055'

RIG DOWN FLOOR, NIPPLE DOWN BOPE, NIPPLE UP WELLHEAD.

PUMP 7 GALLON CORROSION INHIBITOR SWEEP, PRESSURE TEST TUBING
TO 500 PSI FOR 10 MINUTES, GOOD TEST
PUMP OFF PUMP OUT PLUG AT 1050PSI.

SECURE WELL AND LOCATION

CREW TRAVEL TO TOWN.

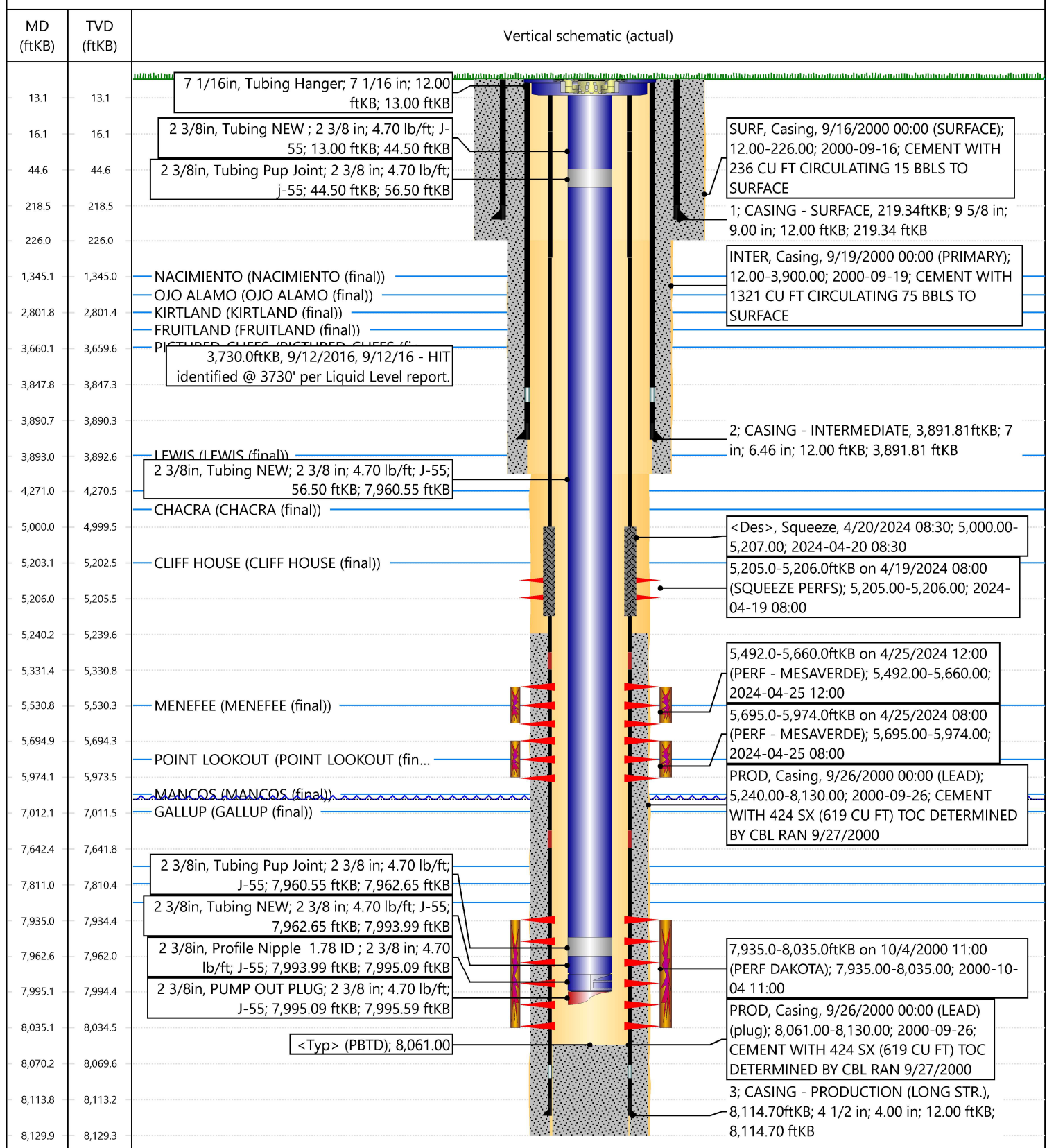


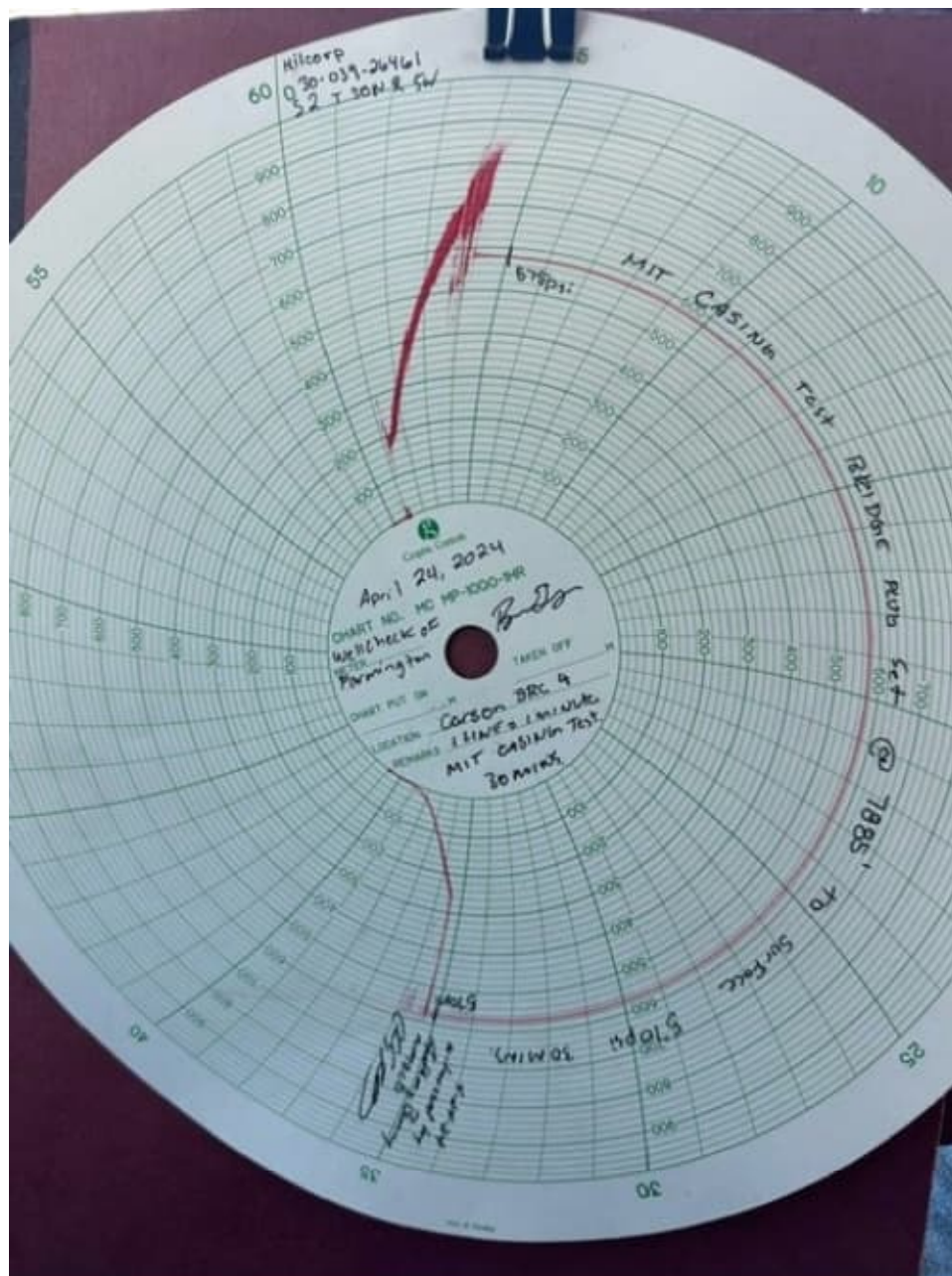
Current Schematic - Version 3

Well Name: CARSON SRC #4

API / UWI 3003926461	Surface Legal Location 002-030N-005W-E	Field Name BASIN DAKOTA (PRORATED GAS)	Route 1203	State/Province NEW MEXICO	Well Configuration Type Vertical
Ground Elevation (ft) 6,483.00	Original KB/RT Elevation (ft) 6,495.00	Tubing Hanger Elevation (ft)	RKB to GL (ft) 12.00	KB-Casing Flange Distance (ft)	KB-Tubing Hanger Distance (ft)

Original Hole [Vertical]





Mandi Walker

From: Kuehling, Monica, EMNRD <monica.kuehling@emnrd.nm.gov>
Sent: Wednesday, April 24, 2024 4:29 PM
To: Amanda Atencio; Rennick, Kenneth G; Mandi Walker; Kade, Matthew H
Cc: Joe McElreath - (C)
Subject: RE: [EXTERNAL] Carson SRC 4 (3003926461)

Categories: NMOCD

CAUTION: External sender. DO NOT open links or attachments from UNKNOWN senders.

NMOCD approves continuing recompletion in MV formation through perforations from 5203 to 6247. Verified cement on two different logs.

Thank you

Monica Kuehling
Compliance Officer Supervisor
Deputy Oil and Gas Inspector
New Mexico Oil Conservation Division
North District
Office Phone: 505-334-6178 ext. 123
Cell Phone: 505-320-0243
Email - monica.kuehling@emnrd.nm.gov

From: Amanda Atencio <Amanda.Atencio@hilcorp.com>
Sent: Wednesday, April 24, 2024 1:46 PM
To: Kuehling, Monica, EMNRD <monica.kuehling@emnrd.nm.gov>; Rennick, Kenneth G <krennick@blm.gov>; Mandi Walker <mwalker@hilcorp.com>; Kade, Matthew H <mkade@blm.gov>
Cc: Joe McElreath - (C) <jmcelreath@hilcorp.com>
Subject: RE: [EXTERNAL] Carson SRC 4 (3003926461)

Thank you, Monica.

Verbal approval received by Monica Kuehling/NMOCD to continue with recompleat through perforation range: 5203' – 6247'.

From: Kuehling, Monica, EMNRD <monica.kuehling@emnrd.nm.gov>
Sent: Wednesday, April 24, 2024 2:00 PM
To: Amanda Atencio <Amanda.Atencio@hilcorp.com>; Rennick, Kenneth G <krennick@blm.gov>; Mandi Walker <mwalker@hilcorp.com>; Kade, Matthew H <mkade@blm.gov>
Cc: Joe McElreath - (C) <jmcelreath@hilcorp.com>
Subject: RE: [EXTERNAL] Carson SRC 4 (3003926461)

CAUTION: External sender. DO NOT open links or attachments from UNKNOWN senders.

That is what I have found as well concerning original cement job circulated to surface. Thank you for looking

Monica Kuehling
Compliance Officer Supervisor
Deputy Oil and Gas Inspector
New Mexico Oil Conservation Division
North District
Office Phone: 505-334-6178 ext. 123
Cell Phone: 505-320-0243
Email - monica.kuehling@emnrd.nm.gov

From: Amanda Atencio <Amanda.Atencio@hilcorp.com>
Sent: Wednesday, April 24, 2024 11:29 AM
To: Kuehling, Monica, EMNRD <monica.kuehling@emnrd.nm.gov>; Rennick, Kenneth G <krennick@blm.gov>; Mandi Walker <mwalker@hilcorp.com>; Kade, Matthew H <mkade@blm.gov>
Cc: Joe McElreath - (C) <jmcelreath@hilcorp.com>
Subject: RE: [EXTERNAL] Carson SRC 4 (3003926461)

Hello Monica,

I don't show that there was any prior remediation work done on the intermediate string. I am also showing that cement was circulated to surface behind the intermediate 9/19/2000.

During wellbore prep we circulated cement from squeeze holes at 5205' (per approved NOI) up the production – intermediate annulus to achieve cement coverage across the entirety of the Mesaverde interval. However, we only circulated cement up to ~5000'.

The witnessed MIT was passed (witnessed by Anthony Bunny/NMOCD).

Please let me know if you have any other questions and if we may proceed with perforating.

Thank you,

Amanda Atencio

Operations Engineer – SJE
Hilcorp Energy Company
Office: (346) 237-2160
Cell: (719) 393-2721

From: Kuehling, Monica, EMNRD <monica.kuehling@emnrd.nm.gov>
Sent: Wednesday, April 24, 2024 11:10 AM
To: Rennick, Kenneth G <krennick@blm.gov>; Amanda Atencio <Amanda.Atencio@hilcorp.com>; Mandi Walker <mwalker@hilcorp.com>; Kade, Matthew H <mkade@blm.gov>
Subject: RE: [EXTERNAL] Carson SRC 4 (3003926461)

CAUTION: External sender. DO NOT open links or attachments from UNKNOWN senders.

Thank you Kenny for catching that – I believe I am getting logs mixed up

Amanda

I cannot find any documentation on when the cement was ran on the intermediate that is showing on the CBL – The CBL shows cement from 142 to surface - The original well report noted that they circulated cement to surface on the intermediate –

When was remediation on the intermediate performed?

Bradenhead tests in 2010 show intermediate with 313 psi – 2013 intermediate shows 116 – 2016 intermediate shows 0

If you have a record of that repair in your files, please submit through ours so that we will have a record of it.

Also in addition approval for recompleting is dependent on MIT passing that was being ran at 10 a.m. this morning

Thank you

Monica Kuehling
Compliance Officer Supervisor
Deputy Oil and Gas Inspector
New Mexico Oil Conservation Division
North District
Office Phone: 505-334-6178 ext. 123
Cell Phone: 505-320-0243
Email - monica.kuehling@emnrd.nm.gov

From: Rennick, Kenneth G <krennick@blm.gov>
Sent: Wednesday, April 24, 2024 9:20 AM
To: Amanda Atencio <Amanda.Atencio@hilcorp.com>; Mandi Walker <mwalker@hilcorp.com>; Kuehling, Monica, EMNRD <monica.kuehling@emnrd.nm.gov>; Kade, Matthew H <mkade@blm.gov>
Subject: Re: [EXTERNAL] Carson SRC 4 (3003926461)

Thank you for the information.

The BLM finds the proposed perforation interval appropriate.

Kenneth (Kenny) Rennick

Petroleum Engineer

Bureau of Land Management
Farmington Field Office
6251 College Blvd
Farmington, NM 87402

Email: krennick@blm.gov
Mobile & Text: 505.497.0019

From: Amanda Atencio <Amanda.Atencio@hilcorp.com>
Sent: Wednesday, April 24, 2024 8:44 AM
To: Rennick, Kenneth G <krennick@blm.gov>; Mandi Walker <mwalker@hilcorp.com>;
Monica.Kuehling@emnrd.nm.gov <Monica.Kuehling@emnrd.nm.gov>; Kade, Matthew H <mkade@blm.gov>
Subject: RE: [EXTERNAL] Carson SRC 4 (3003926461)

Good morning Kenny,

A CBL was ran 9/27/2000 from 3700' to plug back. The latest CBL was only ran over the interval that our squeeze work was performed across. The original CBL is attached here and is also uploaded on the OCD website.

Please let me know if additional information is needed.

Thanks!

Amanda Atencio

Operations Engineer – SJE
Hilcorp Energy Company
Office: (346) 237-2160
Cell: (719) 393-2721

From: Rennick, Kenneth G <krennick@blm.gov>
Sent: Wednesday, April 24, 2024 9:05 AM
To: Mandi Walker <mwalker@hilcorp.com>; Monica.Kuehling@emnrd.nm.gov; Kade, Matthew H <mkade@blm.gov>
Cc: Amanda Atencio <Amanda.Atencio@hilcorp.com>
Subject: Re: [EXTERNAL] Carson SRC 4 (3003926461)

CAUTION: External sender. DO NOT open links or attachments from UNKNOWN senders.

Hello Mandi,

Was there a reason why the CBL was only ran down to about 6100. Even though the requested interval is down to 6247.

Thank you, in advance!

Kenny Rennick

Kenneth (Kenny) Rennick

Petroleum Engineer

Bureau of Land Management
Farmington Field Office
6251 College Blvd
Farmington, NM 87402

Email: krennick@blm.gov

Mobile & Text: 505.497.0019

From: Mandi Walker <mwalker@hilcorp.com>

Sent: Wednesday, April 24, 2024 7:13 AM

To: Monica.Kuehling@emnrd.nm.gov <Monica.Kuehling@emnrd.nm.gov>; Kade, Matthew H <mkade@blm.gov>;
Rennick, Kenneth G <krennick@blm.gov>

Cc: Amanda Atencio <Amanda.Atencio@hilcorp.com>; Mandi Walker <mwalker@hilcorp.com>

Subject: [EXTERNAL] Carson SRC 4 (3003926461)

This email has been received from outside of DOI - Use caution before clicking on links, opening attachments, or responding.

Monica/Kenny/Matthew,

Attached is the CBL that was ran during the recompleat wellbore prep for the subject well. Hilcorp is requesting permission to move forward with our recompleat as outlined in the approved NOI (Perf range: 5203' – 6247'), see OCD link below. Please let me know if you need any additional information.

Thank you,

Mandi Walker

SJE/SJN (1,2,7) Regulatory Technician Sr.

Hilcorp Energy Company

1111 Travis Street / 12.215

Houston, TX 77002

Office: 346.237.2177

mwalker@hilcorp.com

The information contained in this email message is confidential and may be legally privileged and is intended only for the use of the individual or entity named above. If you are not an intended recipient or if you have received this message in error, you are hereby notified that any dissemination, distribution, or copy of this email is strictly prohibited. If you have received this email in error, please immediately notify us by return email or telephone if the sender's phone number is listed

above, then promptly and permanently delete this message.

While all reasonable care has been taken to avoid the transmission of viruses, it is the responsibility of the recipient to ensure that the onward transmission, opening, or use of this message and any attachments will not adversely affect its systems or data. No responsibility is accepted by the company in this regard and the recipient should carry out such virus and other checks as it considers appropriate.

The information contained in this email message is confidential and may be legally privileged and is intended only for the use of the individual or entity named above. If you are not an intended recipient or if you have received this message in error, you are hereby notified that any dissemination, distribution, or copy of this email is strictly prohibited. If you have received this email in error, please immediately notify us by return email or telephone if the sender's phone number is listed above, then promptly and permanently delete this message.

While all reasonable care has been taken to avoid the transmission of viruses, it is the responsibility of the recipient to ensure that the onward transmission, opening, or use of this message and any attachments will not adversely affect its systems or data. No responsibility is accepted by the company in this regard and the recipient should carry out such virus and other checks as it considers appropriate.

The information contained in this email message is confidential and may be legally privileged and is intended only for the use of the individual or entity named above. If you are not an intended recipient or if you have received this message in error, you are hereby notified that any dissemination, distribution, or copy of this email is strictly prohibited. If you have received this email in error, please immediately notify us by return email or telephone if the sender's phone number is listed above, then promptly and permanently delete this message.

While all reasonable care has been taken to avoid the transmission of viruses, it is the responsibility of the recipient to ensure that the onward transmission, opening, or use of this message and any attachments will not adversely affect its systems or data. No responsibility is accepted by the company in this regard and the recipient should carry out such virus and other checks as it considers appropriate.

The information contained in this email message is confidential and may be legally privileged and is intended only for the use of the individual or entity named above. If you are not an intended recipient or if you have received this message in error, you are hereby notified that any dissemination, distribution, or copy of this email is strictly prohibited. If you have received this email in error, please immediately notify us by return email or telephone if the sender's phone number is listed above, then promptly and permanently delete this message.

While all reasonable care has been taken to avoid the transmission of viruses, it is the responsibility of the recipient to ensure that the onward transmission, opening, or use of this message and any attachments will not adversely affect its systems or data. No responsibility is accepted by the company in this regard and the recipient should carry out such virus and other checks as it considers appropriate.

UNITED STATES
DEPARTMENT OF THE INTERIOR
BUREAU OF LAND MANAGEMENT

FORM APPROVED
OMB No. 1004-0137
Expires: July 31, 2018

WELL COMPLETION OR RECOMPLETION REPORT AND LOG

1a. Type of Well	<input type="checkbox"/> Oil Well	<input checked="" type="checkbox"/> Gas Well	<input type="checkbox"/> Dry	<input type="checkbox"/> Other	
b. Type of Completion:	<input type="checkbox"/> New Well	<input type="checkbox"/> Work Over	<input type="checkbox"/> Deepen	<input type="checkbox"/> Plug Back	<input checked="" type="checkbox"/> Diff. Resvr.,
Other: <u>Recomplete</u>					

5. Lease Serial No.
NMNM4453

6. If Indian, Allottee or Tribe Name

7. Unit or CA Agreement Name and No.

2. Name of Operator
Hilcorp Energy Company

8. Lease Name and Well No.
Carson SRC 4

3. Address	3a. Phone No. (include area code)
382 Road 3100, Aztec, NM 87410	(505) 599-3400

9. API Well No.
30-039-26461

4. Location of Well (Report location clearly and in accordance with Federal requirements)*
--

10. Field and Pool or Exploratory
Blanco Mesaverde

11. Sec., T., R., M., on Block and Survey or Area
Sec. 2, T30N, R05W

12. County or Parish	13. State
Rio Arriba	New Mexico

At surface
E (SWNW) 1380' FNL & 660' FWL

At top prod. Interval reported below

At total depth

14. Date Spudded	15. Date T.D. Reached	16. Date Completed
9/15/2000	9/24/2000	<input type="checkbox"/> D & A <input checked="" type="checkbox"/> Ready to Prod.

17. Elevations (DF, RKB, RT, GL)*
6483' GL

18. Total Depth:	19. Plug Back T.D.:	20. Depth Bridge Plug Set:
8130'	8071'	MD TVD

21. Type Electric & Other Mechanical Logs Run (Submit copy of each)
CBL

22. Was well cored?	<input checked="" type="checkbox"/> No <input type="checkbox"/> Yes (Submit analysis)
Was DST run?	<input checked="" type="checkbox"/> No <input type="checkbox"/> Yes (Submit report)
Directional Survey?	<input checked="" type="checkbox"/> No <input type="checkbox"/> Yes (Submit copy)

23. Casing and Liner Record (Report all strings set in well)
--

Hole Size	Size/Grade	Wt. (#/ft.)	Top (MD)	Bottom (MD)	Stage Cementer Depth	No. of Sk. & Type of Cement	Slurry Vol. (BBL)	Cement top*	Amount Pulled
12 1/4"	9 5/8", H-40	32.3#		219'		200			
8 3/4"	7", J-55	20#		3892'		505			
6 1/4"	4 1/2", J-55	11.6#		8115'		424			

24. Tubing Record

Size	Depth Set (MD)	Packer Depth (MD)	Size	Depth Set (MD)	Packer Depth (MD)	Size	Depth Set (MD)	Packer Depth (MD)
2 3/8"	7995'							

25. Producing Intervals	26. Perforation Record
-------------------------	------------------------

Formation	Top	Bottom	Perforated Interval	Size	No. Holes	Perf. Status
A) Squeeze Job	5205'	5205'	4 SPF		4	Squeezed
B) Cliffhouse/Upper Menefee	5492'	5660'	3 SPF	0.35	27	Open
C) Point Lookout/Lwr Menefee	5695'	5974'	3 SPF	0.35	27	Open
D)						

27. Acid, Fracture, Treatment, Cement Squeeze, etc.

Depth Interval	Amount and Type of Material
Squeeze Job	MIX AND PUMP CEMENT SQUEEZE AS FOLLOWS: PUMP 10 BBLS OF WATER AHEAD 170 SACKS CLASS G NEAT CEMENT 15.9# 1.15 YIELD 34.7 BBLS OF SLURRY PUMP SLURRY WITH TUBING PRESSURE AT 0 PSI,
Cliffhouse/Upper Menefee (5492' - 5660')	FRAC AT 50 BPM W/ 70 Q N2 FOAM. TOTAL LOAD: 1272 BBLS TOTAL SLICKWATER: 1260 BBLS TOTAL ACID: 12 BBLS TOTAL 20/40 SAND: 150,994 LBS TOTAL N2: 2,112,000 SCF
Point Lookout/Lwr Menefee (5695' - 5974')	FRAC AT 45 BPM W/ 70 Q N2 FOAM. TOTAL LOAD: 781 BBLS TOTAL SLICKWATER: 769 BBLS TOTAL ACID: 12 BBLS TOTAL 20/40 SAND: 101,768 LBS TOTAL N2: 1,288,000 SCF

28. Production - Interval A

Date First Produced	Test Date	Hours Tested	Test Production	Oil BBL	Gas MCF	Water BBL	Oil Gravity Corr. API	Gas Gravity	Production Method
5/9/2024		20	➡	0	675	0			Flowing
Choke Size	Tbg. Press. Flwg.	Csg. Press.	24 Hr. Rate	Oil BBL	Gas MCF	Water BBL	Gas/Oil Ratio	Well Status	
16/64"	SI - 927	SI - 1100	➡	0	810	0		Producing	

28a. Production - Interval B

Date First Produced	Test Date	Hours Tested	Test Production	Oil BBL	Gas MCF	Water BBL	Oil Gravity Corr. API	Gas Gravity	Production Method
			➡						
Choke Size	Tbg. Press. Flwg.	Csg. Press.	24 Hr. Rate	Oil BBL	Gas MCF	Water BBL	Gas/Oil Ratio	Well Status	
SI			➡						

*(See instructions and spaces for additional data on page 2)

28b. Production - Interval C									
Date First Produced	Test Date	Hours Tested	Test Production	Oil BBL	Gas MCF	Water BBL	Oil Gravity Corr. API	Gas Gravity	Production Method
Choke Size	Tbg. Press. Flwg. SI	Csg. Press.	24 Hr. Rate	Oil BBL	Gas MCF	Water BBL	Gas/Oil Ratio	Well Status	

28c. Production - Interval D									
Date First Produced	Test Date	Hours Tested	Test Production	Oil BBL	Gas MCF	Water BBL	Oil Gravity Corr. API	Gas Gravity	Production Method
Choke Size	Tbg. Press. Flwg. SI	Csg. Press.	24 Hr. Rate	Oil BBL	Gas MCF	Water BBL	Gas/Oil Ratio	Well Status	

29. Disposition of Gas (Sold, used for fuel, vented, etc.)

SOLD

30. Summary of Porous Zones (Include Aquifers):	31. Formation (Log) Markers
Show all important zones of porosity and contents thereof: Cored intervals and all drill-stem test, including depth interval tested, cushion used, time tool open, flowing and shut-in pressures and recoveries.	

Formation	Top	Bottom	Descriptions, Contents, etc.	Name	Top
					Meas. Depth
Ojo Alamo	2566'	2802'	White, cr-gr ss	Ojo Alamo	2566'
Kirtland	2802'	3330'	Gry sh interbedded w/tight, gry, fine-gr ss.	Kirtland	2802'
Fruitland	3330'	3660'	Dk gry-gry carb sh, coal, grn silts, light-med gry, tight, fine gr ss.	Fruitland	3330'
Pictured Cliffs	3660'	3893'	Bn-Gry, fine grn, tight ss.	Pictured Cliffs	3660'
Lewis	3893'	4656'	Shale w/ siltstone stingers	Lewis	3893'
Chacra	4656'	5203'	Gry fn grn silty, glauconitic sd stone w/ drk gry shale	Chacra	4656'
Cliffhouse	5203'	5531'	Light gry, med-fine gr ss, carb sh & coal	Mesaverde	5203'
Menefee	5531'	5754'	Med-dark gry, fine gr ss, carb sh & coal	Menefee	5531'
Point Lookout	5754'	6247'	Med-light gry, very fine gr ss w/ frequent sh breaks in lower part of formation	Point Lookout	5754'
Mancos	6247'	7012'	Dark gry carb sh.	Mancos	6247'
Gallup	7012'	7758'	Lt. gry to brn calc carb micac glucac silts & very fine gry gry ss w/ irreg. interbed sh.	Gallup	7012'
Greenhorn	7758'	7811'	Highly calc gry sh w/ thin lmst.	Greenhorn	7758'
Graneros	7811'	7933'	Dk gry shale, fossil & carb w/ pyrite incl.	Graneros	7811'
Dakota	7933'		Lt to dark gry foss carb sl calc sl sity ss w/ pyrite incl thin sh bands cly Y shale breaks	Dakota	7933'
Morrison			Interbed grn, brn & red waxy sh & fine to coard grn ss	Morrison	

32. Additional remarks (include plugging procedure):

This well is now producing as a MV/DK Commingle under DHC 5369

33. Indicate which items have been attached by placing a check in the appropriate boxes:

☒ Electrical/Mechanical Logs (1 full set req'd.)

☐ Geologic Report

☐ DST Report

☐ Directional Survey

☐ Sundry Notice for plugging and cement verification

☐ Core Analysis

☐ Other:

34. I hereby certify that the foregoing and attached information is complete and correct as determined from all available records (see attached instructions)*


Name (please print)

Amanda Walker

Title

Operations/Regulatory Technician - Sr.

Signature



Date

5/13/2024

Title 18 U.S.C. Section 1001 and Title 43 U.S.C. Section 1212, make it a crime for any person knowingly and willfully to make to any department or agency of the United States any false, fictitious or fraudulent statements or representations as to any matter within its jurisdiction.

Mandi Walker

From: blm-afmss-notifications@blm.gov
Sent: Tuesday, May 14, 2024 9:02 AM
To: Mandi Walker
Subject: [EXTERNAL] Well Name: CARSON SRC, Well Number: 4, Notification of Well Completion Acceptance

CAUTION: External sender. DO NOT open links or attachments from UNKNOWN senders.

The Bureau of Land Management

Notice of Acceptance for Well Completion Report

- Operator Name: **HILCORP ENERGY COMPANY**
- Well Name: **CARSON SRC**
- Well Number: **4**
- US Well Number: **3003926461**
- Well Completion Report Id: **WCR2024051491764**

This notification is automatically generated. Please do not reply to this message as this account is not monitored.

District I
1625 N. French Dr., Hobbs, NM 88240
Phone:(575) 393-6161 Fax:(575) 393-0720
District II
811 S. First St., Artesia, NM 88210
Phone:(575) 748-1283 Fax:(575) 748-9720
District III
1000 Rio Brazos Rd., Aztec, NM 87410
Phone:(505) 334-6178 Fax:(505) 334-6170
District IV
1220 S. St Francis Dr., Santa Fe, NM 87505
Phone:(505) 476-3470 Fax:(505) 476-3462

State of New Mexico
Energy, Minerals and Natural Resources
Oil Conservation Division
1220 S. St Francis Dr.
Santa Fe, NM 87505

ACKNOWLEDGMENTS

Action 344304

ACKNOWLEDGMENTS

Operator: HILCORP ENERGY COMPANY 1111 Travis Street Houston, TX 77002	OGRID: 372171
	Action Number: 344304
	Action Type: [C-104] Completion Packet (C-104C)

ACKNOWLEDGMENTS

<input checked="" type="checkbox"/>	I hereby certify that the required Water Use Report has been, or will be, submitted for this wells completion.
<input checked="" type="checkbox"/>	I hereby certify that the required FracFocus disclosure has been, or will be, submitted for this wells completion.

District I
1625 N. French Dr., Hobbs, NM 88240
Phone:(575) 393-6161 Fax:(575) 393-0720
District II
811 S. First St., Artesia, NM 88210
Phone:(575) 748-1283 Fax:(575) 748-9720
District III
1000 Rio Brazos Rd., Aztec, NM 87410
Phone:(505) 334-6178 Fax:(505) 334-6170
District IV
1220 S. St Francis Dr., Santa Fe, NM 87505
Phone:(505) 476-3470 Fax:(505) 476-3462

State of New Mexico
Energy, Minerals and Natural Resources
Oil Conservation Division
1220 S. St Francis Dr.
Santa Fe, NM 87505

CONDITIONS

Action 344304

CONDITIONS

Operator: HILCORP ENERGY COMPANY 1111 Travis Street Houston, TX 77002	OGRID: 372171
	Action Number: 344304
	Action Type: [C-104] Completion Packet (C-104C)

CONDITIONS

Created By	Condition	Condition Date
smcgrath	None	5/23/2024