

U.S. Department of the Interior  
BUREAU OF LAND MANAGEMENT

**Well Name:** CANYON LARGO UNIT

**Well Location:** T25N / R6W / SEC 7 /  
NESW / 36.410446 / -107.511566

**County or Parish/State:** RIO  
ARRIBA / NM

**Well Number:** 61

**Type of Well:** CONVENTIONAL GAS  
WELL

**Allottee or Tribe Name:**

**Lease Number:** NMSF078883

**Unit or CA Name:** CANYON LARGO  
UNIT--PC

**Unit or CA Number:**  
NMNM78383A

**US Well Number:** 3003923820

**Operator:** HILCORP ENERGY  
COMPANY

## Subsequent Report

**Sundry ID:** 2792301

**Type of Submission:** Subsequent Report

**Type of Action:** Plug and Abandonment

**Date Sundry Submitted:** 05/24/2024

**Time Sundry Submitted:** 06:04

**Date Operation Actually Began:** 05/22/2024

**Actual Procedure:** Hilcorp Energy Company has plugged and abandoned the subject well on 5/23/2024 per the attached daily report.

## SR Attachments

### Actual Procedure

Canyon\_Largo\_Unit\_61\_P\_A\_SR\_BLM\_Submitted\_20240524060419.pdf

Well Name: CANYON LARGO UNIT

Well Location: T25N / R6W / SEC 7 /  
NESW / 36.410446 / -107.511566County or Parish/State: RIO  
ARRIBA / NM

Well Number: 61

Type of Well: CONVENTIONAL GAS  
WELL

Allottee or Tribe Name:

Lease Number: NMSF078883

Unit or CA Name: CANYON LARGO  
UNIT--PCUnit or CA Number:  
NMNM78383A

US Well Number: 3003923820

Operator: HILCORP ENERGY  
COMPANY**Operator**

I certify that the foregoing is true and correct. Title 18 U.S.C. Section 1001 and Title 43 U.S.C. Section 1212, make it a crime for any person knowingly and willfully to make to any department or agency of the United States any false, fictitious or fraudulent statements or representations as to any matter within its jurisdiction. Electronic submission of Sundry Notices through this system satisfies regulations requiring a

Operator Electronic Signature: PRISCILLA SHORTY

Signed on: MAY 24, 2024 06:04 AM

Name: HILCORP ENERGY COMPANY

Title: Regulatory Technician

Street Address: 382 ROAD 3100

City: AZTEC

State: NM

Phone: (505) 324-5188

Email address: PSHORTY@HILCORP.COM

**Field**

Representative Name:

Street Address:

City:

State:

Zip:

Phone:

Email address:

**BLM Point of Contact**

BLM POC Name: MATTHEW H KADE

BLM POC Title: Petroleum Engineer

BLM POC Phone: 5055647736

BLM POC Email Address: MKADE@BLM.GOV

Disposition: Accepted

Disposition Date: 05/28/2024

Signature: Matthew Kade

**CANYON LARGO UNIT 61****30.039.23820****PLUG AND ABANDONMENT**

**5/22/2024 – HEC ENGINEER SENT AN EMAIL TO KENNY RENNICK, BLM, AND MONICA KUEHLING ON 5/8/2024 DOCUMENTING CHANGES TO THE PROCEDURE BASED ON COAs. BOTH AGENCIES GAVE APPROVALS. MIRU. CHECK PSI ON WELL SITP 0#, SICP 10#, SIICP N/A, BH 0#, BDW 3 MINS. ND WH, NU BOP, PRESSURE TEST & FUNCTION TEST BOP'S & RU RIG FLOOR. RU WIRELINE, MU 2.44" CIBP & RIH TO 2,749'. SET CIBP @ 2,749'. POOH. LW W/19 BBLS. MU CBL TOOLS & RUN CBL FROM 2,749' TO SURFACE. POOH R/D WIRELINE. PU 84 JTS OF 1.66" TBG TO 2,749'. TALLEY, STRAP & RABBIT TBG. LW W/2 BBLS & PUMP 16 BBLS. PT TO 560 PSI & FAILED. HEC ENGINEER SENT THE CBL TO KENNY RENNICK, BLM, AND MONICA KUEHLING, NMOC, AND DOCUMENTED VERBAL APPROVAL TO CHANGE PLUG #2 TO AN INSIDE PLUG ONLY. GETTING INJ RATE @ 1 BBL/MIN & 85 PSI. PUMP CEMENT PLUG #1 (PC, FRD & KRD TOPS) 24 SXS 4.9 BBLS, 1.15, 15.8#, 5 GAL/SX BOC @ 2,749'. TOOH & WOC OVERNIGHT. (BLM REP. DUSTIN PORCH NOT ON LOCATION JUST PHONE UPDATES). SDFN.**

**5/23/2024 - CHECK PSI ON WELL SITP 0#, SICP 0#, SIICP N/A, BH 0#, BDW 0 MINS. TIH & TAG #1 PLUG @ 2,070'. LW W/2 BBLS & PUMP 5 BBLS. PT TO 560 PSI & FAILED. STILL GETTING INJ RATE. 1 BBLS/MIN @ 78 PSI. LD 36 JTS OF 1.66" TBG TO 900'. PUMP CEMENT PLUG #2 (NAC TOP) 12 SXS 2.3 BBLS, 1.15, 15.8# & 5 GAL/SX. BOC @ 900'. LD 14 JTS. TOOH & WOC. TIH & TAG #2 PLUG @ 783'. RU WIRELINE, RIH & PERF SQUEEZES HOLES @ 190'. POOH & RD WIRELINE. LW W/14 BBLS & PUMP 30 BBLS. GOOD CIRC OUT BH @ SURFACE. 2.4BBLS/MIN @ 80 PSI. PUMP CEMENT PLUG #3 (SURFACE) 93 SXS 19 BBLS, 1.15, 15.8# & 5 GAL/SX. TOC @ 0', BOC @ 190'. WOC. RD RIG FLOOR, ND BOP & PREP TO CUT OFF WH. CUT OFF WH. (TOC IN 2-7/8" CAS. 79' & 8-5/8" SURFACE CAS. 36') WELD ON P&A MARKER. FILL CASING AND CELLAR WITH 26 SXS OF CEMENT. RIG DOWN RIG AND EQUIPMENT. (RIG RELEASED @ 20:00 PM 5/23/24) (BLM REP. DUSTIN PORCH NOT ON LOCATION JUST PHONE UPDATES)**

**WELL WAS PLUGGED AND ABANDONED ON 5/23/2024.**

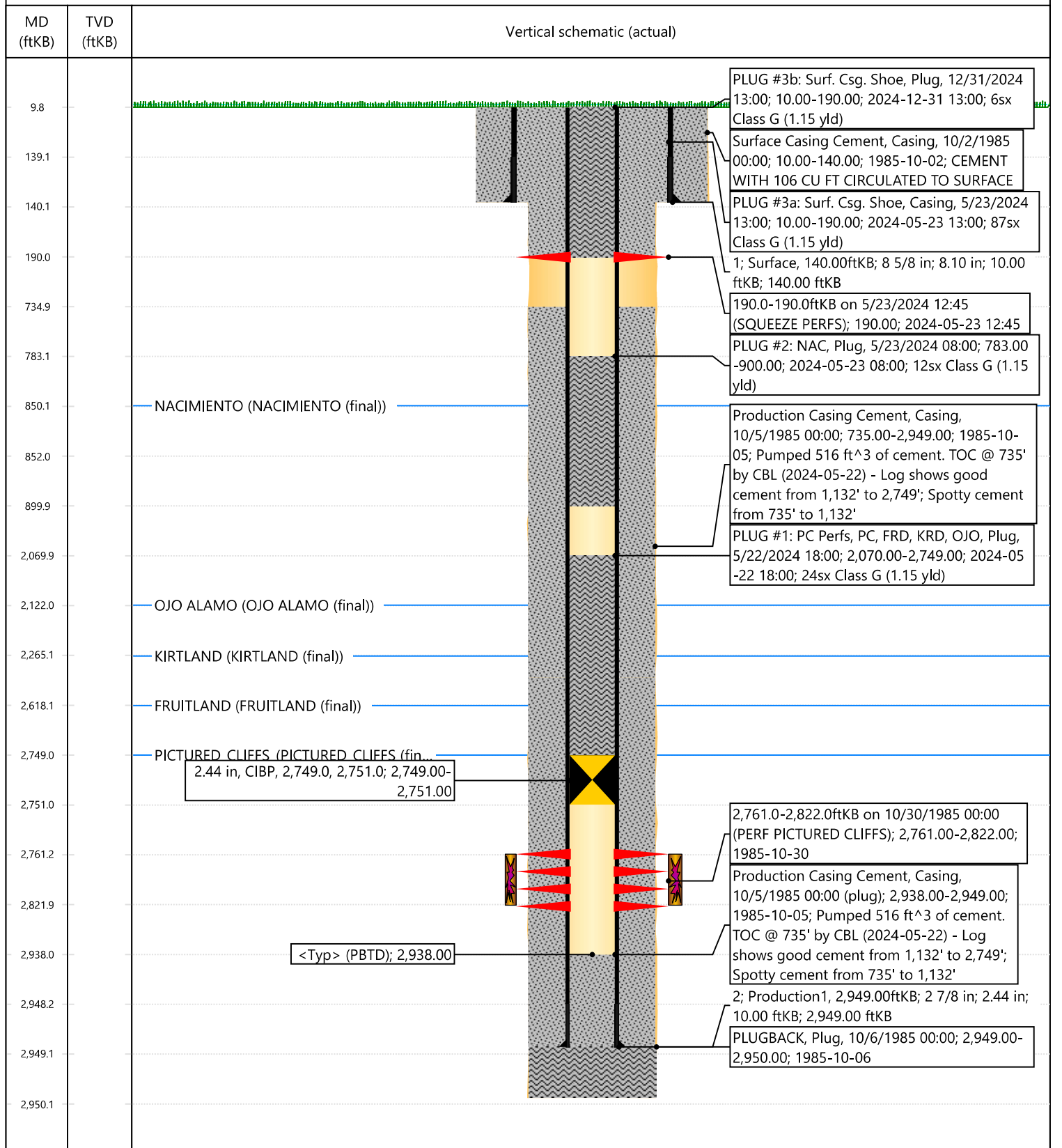


## Current Schematic - Version 3

Well Name: CANYON LARGO UNIT #61

API / UWI 3003923820	Surface Legal Location 007-025N-006W-K	Field Name BLANCO P.C. SOUTH (GAS)	Route 0910	State/Province NEW MEXICO	Well Configuration Type
Ground Elevation (ft) 6,803.00	Original KB/RT Elevation (ft) 6,813.00	Tubing Hanger Elevation (ft)	RKB to GL (ft) 10.00	KB-Casing Flange Distance (ft)	KB-Tubing Hanger Distance (ft)

## Original Hole



**Priscilla Shorty**

---

**From:** Kuehling, Monica, EMNRD <monica.kuehling@emnrd.nm.gov>  
**Sent:** Thursday, May 23, 2024 6:55 AM  
**To:** Rennick, Kenneth G; John LaMond; Kade, Matthew H  
**Cc:** Farmington Regulatory Techs; Brice Clyde - (C); Clay Padgett; Lee Murphy; Rustin Mikeska; John LaMond  
**Subject:** RE: [EXTERNAL] P&A Revision Request for Hilcorp's CANYON LARGO UNIT 61 (API # 3003923820)

**CAUTION:** External sender. DO NOT open links or attachments from UNKNOWN senders.

NMOCD approved verbally 5/22/2024

Thank you

Monica Kuehling  
Compliance Officer Supervisor  
Deputy Oil and Gas Inspector  
New Mexico Oil Conservation Division  
North District  
Office Phone: 505-334-6178 ext. 123  
Cell Phone: 505-320-0243  
Email - monica.kuehling@emnrd.nm.gov

---

**From:** Rennick, Kenneth G <krennick@blm.gov>  
**Sent:** Thursday, May 23, 2024 5:07 AM  
**To:** John LaMond <jlamond@hilcorp.com>; Kuehling, Monica, EMNRD <monica.kuehling@emnrd.nm.gov>; Kade, Matthew H <mkade@blm.gov>  
**Cc:** Farmington Regulatory Techs <FarmingtonRegulatoryTechs@hilcorp.com>; Brice Clyde - (C) <Brice.Clyde@hilcorp.com>; Clay Padgett <cpadgett@hilcorp.com>; Lee Murphy <lmurphy@hilcorp.com>; Rustin Mikeska <rmikeska@hilcorp.com>; John LaMond <jlamond@hilcorp.com>  
**Subject:** Re: [EXTERNAL] P&A Revision Request for Hilcorp's CANYON LARGO UNIT 61 (API # 3003923820)

To confirm, the BLM finds the procedure appropriate

Get [Outlook for iOS](#)

---

**From:** John LaMond <jlamond@hilcorp.com>  
**Sent:** Wednesday, May 22, 2024 7:05:14 PM  
**To:** Kuehling, Monica, EMNRD <[monica.kuehling@emnrd.nm.gov](mailto:monica.kuehling@emnrd.nm.gov)>; Rennick, Kenneth G <[krennick@blm.gov](mailto:krennick@blm.gov)>; Kade, Matthew H <[mkade@blm.gov](mailto:mkade@blm.gov)>  
**Cc:** Farmington Regulatory Techs <[FarmingtonRegulatoryTechs@hilcorp.com](mailto:FarmingtonRegulatoryTechs@hilcorp.com)>; Brice Clyde - (C) <[Brice.Clyde@hilcorp.com](mailto:Brice.Clyde@hilcorp.com)>; Clay Padgett <[cpadgett@hilcorp.com](mailto:cpadgett@hilcorp.com)>; Lee Murphy <[lmurphy@hilcorp.com](mailto:lmurphy@hilcorp.com)>; Rustin Mikeska <[rmikeska@hilcorp.com](mailto:rmikeska@hilcorp.com)>; John LaMond <[jlamond@hilcorp.com](mailto:jlamond@hilcorp.com)>  
**Subject:** RE: [EXTERNAL] P&A Revision Request for Hilcorp's CANYON LARGO UNIT 61 (API # 3003923820)

Good evening Monica and Kenny,

Attached is the CBL run today (2024-05-22).

Based on the results of the CBL, Hilcorp received verbal approval from the NMOCD and BLM to make the following revisions:

- PLUG #1: 21sx of Class G Cement (15.8 PPG, 1.15 yield); PC Perfs @ 2,761' | PC Top @ 2,749' | FRD Top @ 2,618' | KRD Top @ 2,265' | OJO Top @ 2,122':
  - No changes - Pump as outlined and approved in the email chain below
- PLUG #2: 5sx of Class G Cement (15.8 PPG, 1.15 yield); NAC Top @ 850':
  - **Hilcorp received verbal approval from the NMOCD and BLM to make this an inside plug ONLY**
  - Pump a 5 sack balanced cement plug inside the 2-7/8" casing (est. **TOC @ +/- 750'** & est. **BOC @ +/- 900'**).
- PLUG #3: 54sx of Class G Cement (15.8 PPG, 1.15 yield); Surf. Casing Shoe @ 140':
  - No changes - Pump as outlined and approved in the email chain below

Please let me know if you have any questions.

Thanks,

### John LaMond

Operations Engineer – Technical Services  
Hilcorp Energy Company  
1111 Travis  
Houston, TX 77002  
346-237-2210 (Office)  
832-754-9692 (Cell)  
[jlamond@hilcorp.com](mailto:jlamond@hilcorp.com)

---

**From:** Kuehling, Monica, EMNRD <[monica.kuehling@emnrd.nm.gov](mailto:monica.kuehling@emnrd.nm.gov)>

**Sent:** Wednesday, May 8, 2024 9:52 AM

**To:** Rennick, Kenneth G <[krennick@blm.gov](mailto:krennick@blm.gov)>; John LaMond <[jlamond@hilcorp.com](mailto:jlamond@hilcorp.com)>; Kade, Matthew H <[mkade@blm.gov](mailto:mkade@blm.gov)>

**Cc:** Farmington Regulatory Techs <[FarmingtonRegulatoryTechs@hilcorp.com](mailto:FarmingtonRegulatoryTechs@hilcorp.com)>; Brice Clyde - (C) <[Brice.Clyde@hilcorp.com](mailto:Brice.Clyde@hilcorp.com)>; Clay Padgett <[cpadgett@hilcorp.com](mailto:cpadgett@hilcorp.com)>; Lee Murphy <[lmurphy@hilcorp.com](mailto:lmurphy@hilcorp.com)>; Rustin Mikeska <[rmikeska@hilcorp.com](mailto:rmikeska@hilcorp.com)>

**Subject:** RE: [EXTERNAL] P&A Revision Request for Hilcorp's CANYON LARGO UNIT 61 (API # 3003923820)

**CAUTION:** External sender. DO NOT open links or attachments from UNKNOWN senders.

NMOCD approves below

Thank you

Monica Kuehling  
Compliance Officer Supervisor

Deputy Oil and Gas Inspector  
New Mexico Oil Conservation Division  
North District  
Office Phone: 505-334-6178 ext. 123  
Cell Phone: 505-320-0243  
Email - [monica.kuehling@emnrd.nm.gov](mailto:monica.kuehling@emnrd.nm.gov)

---

**From:** Rennick, Kenneth G <[krennick@blm.gov](mailto:krennick@blm.gov)>  
**Sent:** Wednesday, May 8, 2024 8:33 AM  
**To:** John LaMond <[jlamond@hilcorp.com](mailto:jlamond@hilcorp.com)>; Kuehling, Monica, EMNRD <[monica.kuehling@emnrd.nm.gov](mailto:monica.kuehling@emnrd.nm.gov)>; Kade, Matthew H <[mkade@blm.gov](mailto:mkade@blm.gov)>  
**Cc:** Farmington Regulatory Techs <[FarmingtonRegulatoryTechs@hilcorp.com](mailto:FarmingtonRegulatoryTechs@hilcorp.com)>; Brice Clyde - (C) <[Brice.Clyde@hilcorp.com](mailto:Brice.Clyde@hilcorp.com)>; Clay Padgett <[cpadgett@hilcorp.com](mailto:cpadgett@hilcorp.com)>; Lee Murphy <[lmurphy@hilcorp.com](mailto:lmurphy@hilcorp.com)>; Rustin Mikeska <[rmikeska@hilcorp.com](mailto:rmikeska@hilcorp.com)>  
**Subject:** Re: [EXTERNAL] P&A Revision Request for Hilcorp's CANYON LARGO UNIT 61 (API # 3003923820)

The BLM finds the updated procedure appropriate.

Kenneth (Kenny) Rennick

Petroleum Engineer

Bureau of Land Management  
Farmington Field Office  
6251 College Blvd  
Farmington, NM 87402

Email: [krennick@blm.gov](mailto:krennick@blm.gov)  
Mobile & Text: 505.497.0019

---

**From:** John LaMond <[jlamond@hilcorp.com](mailto:jlamond@hilcorp.com)>  
**Sent:** Wednesday, May 8, 2024 8:09 AM  
**To:** Kuehling, Monica, EMNRD <[monica.kuehling@emnrd.nm.gov](mailto:monica.kuehling@emnrd.nm.gov)>; Rennick, Kenneth G <[krennick@blm.gov](mailto:krennick@blm.gov)>; Kade, Matthew H <[mkade@blm.gov](mailto:mkade@blm.gov)>  
**Cc:** Farmington Regulatory Techs <[FarmingtonRegulatoryTechs@hilcorp.com](mailto:FarmingtonRegulatoryTechs@hilcorp.com)>; Brice Clyde - (C) <[Brice.Clyde@hilcorp.com](mailto:Brice.Clyde@hilcorp.com)>; Clay Padgett <[cpadgett@hilcorp.com](mailto:cpadgett@hilcorp.com)>; John LaMond <[jlamond@hilcorp.com](mailto:jlamond@hilcorp.com)>; Lee Murphy <[lmurphy@hilcorp.com](mailto:lmurphy@hilcorp.com)>; Rustin Mikeska <[rmikeska@hilcorp.com](mailto:rmikeska@hilcorp.com)>  
**Subject:** [EXTERNAL] P&A Revision Request for Hilcorp's CANYON LARGO UNIT 61 (API # 3003923820)

**This email has been received from outside of DOI - Use caution before clicking on links, opening attachments, or responding.**

Good morning Monica and Kenny,

Hilcorp is planning to work on the CANYON LARGO UNIT 61 (API # 3003923820) P&A in the near future.

I have attached the approved P&A NOI, as well as an updated procedure based on the COAs in the approved NOI.

Based on the COAs, Hilcorp requests the following adjustments to the approved procedure:

- PLUG #1: The CIBP will be set at 2,749' (PC Perfs @ 2,761', PC Top @ 2,749'). **(NMOCD provided verbal approval for this after discussing the COAs)**
  - Pump 727" of cement on top of the CIBP from 2,022' to 2,749'.
- PLUG #2: (NAC Top @ 850')
  - This will now be an inside/outside plug (pending CBL) with an added CICR set @ 850'. See procedure attached and below.
- All other plugs have been adjusted according to the BLM & NMOCD formation tops. Please see the revised procedure attached and below.





**HILCORP ENERGY COMPANY**  
**CANYON LARGO UNIT 61**  
**P&A NOI**

API #: 3003923820

**JOB PROCEDURES**

1. Contact NMOCD and BLM (where applicable) 24 hours prior to MIRU.
2. Hold pre-job safety meeting. Verify cathodic is off. Comply with all NMOCD, BLM, and HEC safety and environmental regulations.
3. MIRU service rig and associated equipment; NU and test BOP.
4. Set a 2-7/8" CIBP at +/- 2,749' to isolate the PC Perfs.
5. Load the well as needed. Pressure test the casing above the plug to 560 psig.
6. RU Wireline. Run CBL. Record Top of Cement. All subsequent plugs below are subject to change pending CBL results.
7. PU & TIH w/ work string to +/- 2,749'.
8. **PLUG #1: 21sx of Class G Cement (15.8 PPG, 1.15 yield); PC Perfs @ 2,761' | PC Top @ 2,749' | FRD Top @ 2,618' | KRD Top @ 2,265' | O.**  
 Pump a 21 sack balanced cement plug inside the 2-7/8" casing (est. TOC @ +/- 2,022' & est. BOC @ +/- 2,749'). Wait on Cement for 4 hours, tag T cement plug lengths & volumes account for excess.
9. Load the well as needed. Pressure test the casing above the plug to 560 psig. If pressure test passes, no need to WOC or Tag on Subsequent Plug
10. TOOH w/ work string. TIH & perforate squeeze holes @ +/- 900'. RIH w/ 2-7/8" CICR and set CICR @ +/- 850'. TIH w/ work string & sting into CICR
11. **PLUG #2: 41sx of Class G Cement (15.8 PPG, 1.15 yield); NAC Top @ 850':**  
 Pump 36sx of cement in the 2-7/8" casing X 6-3/4" open hole annulus (est. TOC @ +/- 700' & est. BOC @ +/- 900'). Pump an additional 2sx of ceme CICR (est. TOC @ +/- 850' & est. BOC @ +/- 900'). Sting out of retainer, pump a 3 sack balanced cement plug on top of the CICR. (est. TOC @ +/- 850'). WOC for 4 hrs, tag TOC w/ work string. \*Note cement plug lengths and volumes account for excess.
12. POOH w/ work string.
13. TIH & perforate squeeze holes @ +/- 190'. Establish circulation.
14. **PLUG #3: 54sx of Class G Cement (15.8 PPG, 1.15 yield); Surf. Casing Shoe @ 140':**  
 Pump 9sx of cement in the 2-7/8" casing X 6-3/4" open hole annulus (est. TOC @ +/- 140' & est. BOC @ +/- 190'). Continue pumping 39sx of ceme 5/8" casing annulus (est. TOC @ +/- 0' & est. BOC @ +/- 140'). Pump an 8 sack balanced cement plug inside the 2-7/8" casing (est. TOC @ +/- 0'
15. ND BOP, cut off casing below casing flange. Top off cement in surface casing annulus, if needed. Install a P&A marker with cement to comply with r move off location, cut off anchors, and restore location.

Do the NMOCD and BLM approve of the revised procedure?

Thanks,

**John LaMond**

Operations Engineer – Technical Services

Hilcorp Energy Company

1111 Travis

Houston, TX 77002

346-237-2210 (Office)

832-754-9692 (Cell)

**District I**  
1625 N. French Dr., Hobbs, NM 88240  
Phone:(575) 393-6161 Fax:(575) 393-0720  
**District II**  
811 S. First St., Artesia, NM 88210  
Phone:(575) 748-1283 Fax:(575) 748-9720  
**District III**  
1000 Rio Brazos Rd., Aztec, NM 87410  
Phone:(505) 334-6178 Fax:(505) 334-6170  
**District IV**  
1220 S. St Francis Dr., Santa Fe, NM 87505  
Phone:(505) 476-3470 Fax:(505) 476-3462

State of New Mexico  
Energy, Minerals and Natural Resources  
Oil Conservation Division  
1220 S. St Francis Dr.  
Santa Fe, NM 87505

CONDITIONS  
  
Action 348343

CONDITIONS

Operator: HILCORP ENERGY COMPANY 1111 Travis Street Houston, TX 77002	OGRID: 372171
	Action Number: 348343
	Action Type: [C-103] Sub. Plugging (C-103P)

CONDITIONS

Created By	Condition	Condition Date
mkuehling	well plugged 5/23/2024	5/28/2024