

U.S. Department of the Interior
BUREAU OF LAND MANAGEMENT

Well Name: HUERFANO UNIT

Well Location: T26N / R9W / SEC 9 / SESE / 36.497955 / -107.787781

County or Parish/State: SAN JUAN / NM

Well Number: 28

Type of Well: CONVENTIONAL GAS WELL

Allottee or Tribe Name:

Lease Number: NMSF078000

Unit or CA Name: HUERFANO UNIT--PC

Unit or CA Number: NMNM78395A

US Well Number: 3004505911

Operator: HILCORP ENERGY COMPANY

Subsequent Report

Sundry ID: 2791815

Type of Submission: Subsequent Report

Type of Action: Plug and Abandonment

Date Sundry Submitted: 05/21/2024

Time Sundry Submitted: 01:41

Date Operation Actually Began: 05/16/2024

Actual Procedure: Hilcorp Energy Company plugged and abandoned the subject well on 5/20/2024 per the attached report.

SR Attachments

Actual Procedure

HUERFANO_UNIT_28_PA_Subsequent_20240521134058.pdf

Well Name: HUERFANO UNIT

Well Location: T26N / R9W / SEC 9 /
SESE / 36.497955 / -107.787781County or Parish/State: SAN
JUAN / NM

Well Number: 28

Type of Well: CONVENTIONAL GAS
WELL

Allottee or Tribe Name:

Lease Number: NMSF078000

Unit or CA Name: HUERFANO UNIT--
PCUnit or CA Number:
NMNM78395A

US Well Number: 3004505911

Operator: HILCORP ENERGY
COMPANY**Operator**

I certify that the foregoing is true and correct. Title 18 U.S.C. Section 1001 and Title 43 U.S.C. Section 1212, make it a crime for any person knowingly and willfully to make to any department or agency of the United States any false, fictitious or fraudulent statements or representations as to any matter within its jurisdiction. Electronic submission of Sundry Notices through this system satisfies regulations requiring a

Operator Electronic Signature: TAMMY JONES

Signed on: MAY 21, 2024 01:41 PM

Name: HILCORP ENERGY COMPANY

Title: Regulatory Compliance Specialist

Street Address: 382 ROAD 3100

City: AZTEC

State: NM

Phone: (505) 324-5185

Email address: TAJONES@HILCORP.COM

Field

Representative Name:

Street Address:

City:

State:

Zip:

Phone:

Email address:

BLM Point of Contact

BLM POC Name: MATTHEW H KADE

BLM POC Title: Petroleum Engineer

BLM POC Phone: 5055647736

BLM POC Email Address: MKADE@BLM.GOV

Disposition: Accepted

Disposition Date: 05/22/2024

Signature: Matthew Kade

HUERFANO UNIT 28

30.045.05911

PLUG & ABANDONMENT

5/16/2024 – MIRU. CK PRESSURES ON WELL, SITP 0#, SICP 52#, SIICP 0#, BH 0#, BDW 3 MINS. ND WH. NU BOP. PRESSURE TEST & FUNCTION TEST BOP'S & RU RIG FLOOR. RU WIRELINE, MU 2.97" CICR & RIH TO 2024'. COLLAR @ 2024'. COME UP 5' & SET CICR @ 2019'. POOH R/D WIRELINE. MU STINGER. PU 62 JTS OF 1.66" TBG TO 2019'. STING INTO CICR. RATE UNDER CICR @ 2 BBLS/MIN & 150 PSI. **PUMP CEMENT PLUG #1A (PC TOP & PERFS)** 5 SXS 1 BBLS, 1.15, 15.8#, 5 GAL/SX. TOC @ 2019', BOC @ 2126'. 5 SXS UNDER CICR. STING OUT CIR 20 BBLS. TOO H 31 STDS OF 1.66 TBG. RU WIRELINE, MU 2.97" CIBP & RIH TO 2014'. SET CIBP @ 2014'. POOH R/D WIRELINE. TIH 31 STDS OF 1.66" TBG TO 2014'. LW W/14 BBLS & PUMP 20 BBLS. PT TO 560 PSI & PASSED. **PUMP CEMENT PLUG #1B (CSG SHOE, PC TOP, & PC PERFS)** 7 SXS 1.3 BBLS, 1.15, 15.8#, 5 GAL/SX. TOC @ 2014', BOC @ 1864'. R/O 10 BBLS. TOO H 10 STDS OF 1.66" TBG. SISW. DEBRIEF CREW. SDFN. **(BLM REP. BILL DIERS ON LOCATION)**

5/17/2024 – CK PRESSURES ON WELL, SITP 0#, SICP 0#, SIICP 0#, BH 0#, BDW 0 MINS. TIH 10 STDS OF 1.66" TBG & TAG PLUG #1B @ 1817'. LD 6 JTS. **PUMP CEMENT PLUG #2 (FRD TOP)** 7 SXS 1.3 BBLS, 1.15, 15.8#, 5 GAL/SX. TOC @ 1511', BOC @ 1661'. R/O 5 BBLS. LD 11 JTS. TOO H 20 STDS OF 1.66" TBG. RU WIRELINE, RIH & PERF SQUEEZES HOLES @ 1386'. POOH & RD WIRELINE. LW W/1 BBLS & PUMP 5 BBLS. NO INJECT. RATE PRESSURE UP TO 1000 PSI. **(BLM & NMOC D APPROVED TO DUE INSIDE PLUG)** TIH 20 STDS OF 1.66" TBG & 4 JTS TO 1436'. **PUMP CEMENT PLUG #3 (KRD, OJO TOPS)** 21 SXS 4.1 BBLS, 1.15, 15.8#, 5 GAL/SX. TOC @ 955', BOC @ 1436'. LD 16 JTS. R/O 5 BBLS. TOO H 10 STDS & WOC. TIH & TAG PLUG #3 @ 1244'. TAG TO LOW. PT 3-1/2" CASING TO 580 PSI & FAILED. **(GOT APPROVAL TO RE-PUMP #3 PLUG FROM 1244' TO 907')** **PUMP CEMENT PLUG #3B (OJO TOP)** 22 SXS 4.3 BBLS, 1.15, 15.8#, 5 GAL/SX. TOC @ 907', BOC @ 1244'. LD 10 JTS. R/O 5 BBLS. TOO H 10 STDS OF 1.66" TBG. WOC. TIH & TAG PLUG #3B @ 937'. LD 29 JTS. RU WIRELINE, RIH & PERF SQUEEZES HOLES @ 156' (SURFACE). POOH & RD WIRELINE. LW W/5 BBLS & PUMP 20 BBLS. GOOD CIRC OUT INTER & BH @ SURFACE. **PUMP CEMENT PLUG #4 (SURFACE)** 60 SXS 12.2 BBLS, 1.15, 15.8#, 5 GAL/SX. TOC @ 0', BOC @ 156'. (NOTIFIED NMOC D MONICA KUEHLING AND BLM OF RIG MOVE MONDAY FROM HUERFANO UNIT 28 TO CANYON LARGO UNIT 174) RD RIG FLOOR. ND BOP & NU WELL HEAD. PREP TO CUT OFF WH. WAITED ON WELDER BUT GOT TOO LATE TO CUT OFF. SISW, DEBRIEF CREW. SDFN. **(BLM REP. BILL DIERS ON LOCATION)**

5/20/2024 – CK PRESSURES ON WELL, SITP 0#, SICP 0#, SIICP 0#, BH 0#, BDW 0 MINS. CUT OFF WH (TOC IN 3-1/2" CAS. 5', 5-1/2" INTER CAS 0' & 8-5/8" SURFACE CAS. 1') WELD ON P&A MARKER. FILL CASING AND CELLAR WITH 13 SXS OF CEMENT TOTAL. RIG DOWN RIG AND EQUIPMENT. **(RIG RELEASED @ 9:00 AM 5/20/24)**

(BLM REP. BILL DIERS ON LOCATION)

Tammy Jones

From: John LaMond
Sent: Sunday, May 19, 2024 5:43 PM
To: Rennick, Kenneth G; Kuehling, Monica, EMNRD; Kade, Matthew H
Cc: Farmington Regulatory Techs; Brice Clyde - (C); Clay Padgett; Lee Murphy; Rustin Mikeska; John LaMond
Subject: RE: [EXTERNAL] P&A Revision Request for Hilcorp's HUERFANO UNIT 28 (API # 3004505911)

Good evening,

This is a follow up email from verbal approvals and operations that took place Friday (5/17/2024).

After pumping Plug #3 (outlined in the email chain below), we RIH to tag and tagged TOC @ 1,244'. The NMOCD and BLM then provided verbal approval to pump another inside plug (PLUG #3b) to cover to OJO. This plug was pumped from 907' to 1,244'. This plug was then tagged at 937', allowing us to proceed to pumping the surface plug.

Please let me know if you have any questions or concerns.

Thanks,

John LaMond

Operations Engineer – Technical Services

Hilcorp Energy Company

1111 Travis

Houston, TX 77002

346-237-2210 (Office)

832-754-9692 (Cell)

jlamond@hilcorp.com

From: Rennick, Kenneth G <krennick@blm.gov>

Sent: Friday, May 17, 2024 10:40 AM

To: John LaMond <jlamond@hilcorp.com>; Kuehling, Monica, EMNRD <monica.kuehling@emnrd.nm.gov>; Kade, Matthew H <mkade@blm.gov>

Cc: Farmington Regulatory Techs <FarmingtonRegulatoryTechs@hilcorp.com>; Brice Clyde - (C) <Brice.Clyde@hilcorp.com>; Clay Padgett <cpadgett@hilcorp.com>; Lee Murphy <lmurphy@hilcorp.com>; Rustin Mikeska <rmikeska@hilcorp.com>

Subject: Re: [EXTERNAL] P&A Revision Request for Hilcorp's HUERFANO UNIT 28 (API # 3004505911)

CAUTION: External sender. DO NOT open links or attachments from UNKNOWN senders.

To confirm the BLM finds the proposed procedure appropriate.

Kenneth (Kenny) Rennick

Petroleum Engineer

Bureau of Land Management
Farmington Field Office
6251 College Blvd
Farmington, NM 87402

Email: krennick@blm.gov
Mobile & Text: 505.497.0019

From: John LaMond <jlamond@hilcorp.com>
Sent: Friday, May 17, 2024 9:38 AM
To: Kuehling, Monica, EMNRD <monica.kuehling@emnrd.nm.gov>; Rennick, Kenneth G <krennick@blm.gov>; Kade, Matthew H <mkade@blm.gov>
Cc: Farmington Regulatory Techs <FarmingtonRegulatoryTechs@hilcorp.com>; Brice Clyde - (C) <Brice.Clyde@hilcorp.com>; Clay Padgett <cpadgett@hilcorp.com>; Lee Murphy <lmurphy@hilcorp.com>; Rustin Mikeska <rmikeska@hilcorp.com>; John LaMond <jlamond@hilcorp.com>
Subject: RE: [EXTERNAL] P&A Revision Request for Hilcorp's HUERFANO UNIT 28 (API # 3004505911)

Good morning Monica and Kenny,

Per our conversation on the phone, after successfully pumping PLUG #2 (FRD), we RIH and perforated @ 1,386' in preparation to pump PLUG #3 (KRD & OJO). After perforating, we were unsuccessful at establishing an injection rate outside the intermediate string.

Moving forward, Hilcorp received verbal approval from the NMOCD and BLM to pump an inside plug only for PLUG #3 to cover the KRD & OJO and forego pumping outside the intermediate string since we are unable to establish an injection rate on the outside and the production string shows cement to 580' by the CBL run on 12-12-1997.

- PLUG #3: 18sx of Class G Cement (15.8 PPG, 1.15 yield); KRD Top @ 1,336' | OJO Top @ 1,105':
 - TIH to 1,436' with work string
 - Pump an 18 sack balanced cement plug inside the 3-1/2" casing (est. **TOC @ +/- 1,005'** & est. **BOC @ +/- 1,436'**).
 - WOC for 4 hrs, tag WOC w/ work string. *Note cement plug lengths and volumes account for excess.

Please let me know if you have any questions or concerns.

Thanks,

John LaMond

Operations Engineer – Technical Services
Hilcorp Energy Company
1111 Travis
Houston, TX 77002
346-237-2210 (Office)
832-754-9692 (Cell)
jlamond@hilcorp.com

From: Kuehling, Monica, EMNRD <monica.kuehling@emnrd.nm.gov>
Sent: Thursday, May 16, 2024 4:14 PM
To: Rennick, Kenneth G <krennick@blm.gov>; John LaMond <jlamond@hilcorp.com>; Kade, Matthew H <mkade@blm.gov>
Cc: Farmington Regulatory Techs <FarmingtonRegulatoryTechs@hilcorp.com>; Brice Clyde - (C) <Brice.Clyde@hilcorp.com>; Clay Padgett <cpadgett@hilcorp.com>; Lee Murphy <lmurphy@hilcorp.com>; Rustin Mikeska <rmikeska@hilcorp.com>
Subject: RE: [EXTERNAL] P&A Revision Request for Hilcorp's HUERFANO UNIT 28 (API # 3004505911)

CAUTION: External sender. DO NOT open links or attachments from UNKNOWN senders.

NMOCD approves

Thank you

Monica Kuehling
Compliance Officer Supervisor
Deputy Oil and Gas Inspector
New Mexico Oil Conservation Division
North District
Office Phone: 505-334-6178 ext. 123
Cell Phone: 505-320-0243
Email - monica.kuehling@emnrd.nm.gov

From: Rennick, Kenneth G <krennick@blm.gov>
Sent: Thursday, May 16, 2024 3:04 PM
To: John LaMond <jlamond@hilcorp.com>; Kuehling, Monica, EMNRD <monica.kuehling@emnrd.nm.gov>; Kade, Matthew H <mkade@blm.gov>
Cc: Farmington Regulatory Techs <FarmingtonRegulatoryTechs@hilcorp.com>; Brice Clyde - (C) <Brice.Clyde@hilcorp.com>; Clay Padgett <cpadgett@hilcorp.com>; Lee Murphy <lmurphy@hilcorp.com>; Rustin Mikeska <rmikeska@hilcorp.com>
Subject: Re: [EXTERNAL] P&A Revision Request for Hilcorp's HUERFANO UNIT 28 (API # 3004505911)

To confirm, the BLM finds the procedure appropriate.

Kenneth (Kenny) Rennick

Petroleum Engineer

Bureau of Land Management
Farmington Field Office
6251 College Blvd
Farmington, NM 87402

Email: krennick@blm.gov
Mobile & Text: 505.497.0019

From: John LaMond <jlamond@hilcorp.com>
Sent: Thursday, May 16, 2024 2:57 PM
To: Kuehling, Monica, EMNRD <monica.kuehling@emnrd.nm.gov>; Rennick, Kenneth G <krennick@blm.gov>; Kade, Matthew H <mkade@blm.gov>
Cc: Farmington Regulatory Techs <FarmingtonRegulatoryTechs@hilcorp.com>; Brice Clyde - (C) <Brice.Clyde@hilcorp.com>; Clay Padgett <cpadgett@hilcorp.com>; Lee Murphy <lmurphy@hilcorp.com>; Rustin Mikeska <rmikeska@hilcorp.com>; John LaMond <jlamond@hilcorp.com>
Subject: RE: [EXTERNAL] P&A Revision Request for Hilcorp's HUERFANO UNIT 28 (API # 3004505911)

Good afternoon Monica and Kenny,

Upon MIRU on the HUERFANO UNIT 28, we RIH to set our CICR @ 2,024' as approved in the email chain below. Upon running in hole we found that there was a casing collar located at 2024'.

Moving forward, the NMOCD and BLM provided verbal approval to set the CICR @ 2,019' instead.

The remainder of the approved procedure outlined and approved below will remain the same.

Please let me know if you have any questions.

Thanks,

John LaMond

Operations Engineer – Technical Services
Hilcorp Energy Company
1111 Travis
Houston, TX 77002
346-237-2210 (Office)
832-754-9692 (Cell)
jlamond@hilcorp.com

From: Kuehling, Monica, EMNRD <monica.kuehling@emnrd.nm.gov>

Sent: Tuesday, March 26, 2024 2:11 PM

To: Rennick, Kenneth G <krennick@blm.gov>; John LaMond <jlamond@hilcorp.com>; Kade, Matthew H <mkade@blm.gov>

Cc: Farmington Regulatory Techs <FarmingtonRegulatoryTechs@hilcorp.com>; Brice Clyde - (C) <Brice.Clyde@hilcorp.com>; Clay Padgett <cpadgett@hilcorp.com>; Lee Murphy <lmurphy@hilcorp.com>; Max Weaver <mweaver@hilcorp.com>; Rustin Mikeska <rmikeska@hilcorp.com>

Subject: RE: [EXTERNAL] P&A Revision Request for Hilcorp's HUERFANO UNIT 28 (API # 3004505911)

CAUTION: External sender. DO NOT open links or attachments from UNKNOWN senders.

NMOCD agrees

Thank you

Monica Kuehling
Compliance Officer Supervisor
Deputy Oil and Gas Inspector
New Mexico Oil Conservation Division
North District
Office Phone: 505-334-6178 ext. 123
Cell Phone: 505-320-0243
Email - monica.kuehling@emnrd.nm.gov

From: Rennick, Kenneth G <krennick@blm.gov>

Sent: Tuesday, March 26, 2024 12:18 PM

To: John LaMond <jlamond@hilcorp.com>; Kuehling, Monica, EMNRD <monica.kuehling@emnrd.nm.gov>; Kade, Matthew H <mkade@blm.gov>

Cc: Farmington Regulatory Techs <FarmingtonRegulatoryTechs@hilcorp.com>; Brice Clyde - (C) <Brice.Clyde@hilcorp.com>; Clay

Padgett <cpadgett@hilcorp.com>; Lee Murphy <lmurphy@hilcorp.com>; Max Weaver <mweaver@hilcorp.com>; Rustin Mikeska <rmikeska@hilcorp.com>

Subject: Re: [EXTERNAL] P&A Revision Request for Hilcorp's HUERFANO UNIT 28 (API # 3004505911)

The BLM has no issues with perforating at 156'.

Kenneth (Kenny) Rennick

Petroleum Engineer

Bureau of Land Management
Farmington Field Office
6251 College Blvd
Farmington, NM 87402

Email: krennick@blm.gov
Mobile & Text: 505.497.0019

From: John LaMond <jlamond@hilcorp.com>

Sent: Tuesday, March 26, 2024 12:14 PM

To: Kuehling, Monica, EMNRD <monica.kuehling@emnrd.nm.gov>; Rennick, Kenneth G <krennick@blm.gov>; Kade, Matthew H <mkade@blm.gov>

Cc: Farmington Regulatory Techs <FarmingtonRegulatoryTechs@hilcorp.com>; Brice Clyde - (C) <Brice.Clyde@hilcorp.com>; Clay Padgett <cpadgett@hilcorp.com>; Lee Murphy <lmurphy@hilcorp.com>; Max Weaver <mweaver@hilcorp.com>; Rustin Mikeska <rmikeska@hilcorp.com>

Subject: RE: [EXTERNAL] P&A Revision Request for Hilcorp's HUERFANO UNIT 28 (API # 3004505911)

Monica and Kenny,

Thank you for bringing that to my attention. We will plan to perforate at **156'** instead of 408' and circulate to surface. The 408' perf depth is no longer necessary since the BLM determined the NACIMIENTO to be at surface.

Please let me know if you have any issues with this.

Thanks,

John LaMond

Operations Engineer – Technical Services
Hilcorp Energy Company
1111 Travis
Houston, TX 77002
346-237-2210 (Office)
832-754-9692 (Cell)
jlamond@hilcorp.com

From: Kuehling, Monica, EMNRD <monica.kuehling@emnrd.nm.gov>

Sent: Tuesday, March 26, 2024 1:04 PM

To: Rennick, Kenneth G <krennick@blm.gov>; John LaMond <jlamond@hilcorp.com>; Kade, Matthew H <mkade@blm.gov>

Cc: Farmington Regulatory Techs <FarmingtonRegulatoryTechs@hilcorp.com>; Brice Clyde - (C) <Brice.Clyde@hilcorp.com>; Clay Padgett <cpadgett@hilcorp.com>; Lee Murphy <lmurphy@hilcorp.com>; Max Weaver <mweaver@hilcorp.com>; Rustin

Mikeska <rmikeska@hilcorp.com>

Subject: RE: [EXTERNAL] P&A Revision Request for Hilcorp's HUERFANO UNIT 28 (API # 3004505911)

CAUTION: External sender. DO NOT open links or attachments from UNKNOWN senders.

NMOCD approves below with exception – If circulation to surface is not achieved at perforation at 408 feet – perforating at 156 feet will be required.

Thank you

Monica Kuehling
Compliance Officer Supervisor
Deputy Oil and Gas Inspector
New Mexico Oil Conservation Division
North District
Office Phone: 505-334-6178 ext. 123
Cell Phone: 505-320-0243
Email - monica.kuehling@emnrd.nm.gov

From: Rennick, Kenneth G <krennick@blm.gov>

Sent: Tuesday, March 26, 2024 11:00 AM

To: John LaMond <jlamond@hilcorp.com>; Kuehling, Monica, EMNRD <monica.kuehling@emnrd.nm.gov>; Kade, Matthew H <mkade@blm.gov>

Cc: Farmington Regulatory Techs <FarmingtonRegulatoryTechs@hilcorp.com>; Brice Clyde - (C) <Brice.Clyde@hilcorp.com>; Clay Padgett <cpadgett@hilcorp.com>; Lee Murphy <lmurphy@hilcorp.com>; Max Weaver <mweaver@hilcorp.com>; Rustin Mikeska <rmikeska@hilcorp.com>

Subject: Re: [EXTERNAL] P&A Revision Request for Hilcorp's HUERFANO UNIT 28 (API # 3004505911)

The BLM finds this procedure, with the corrected diagram, appropriate.

Kenneth (Kenny) Rennick

Petroleum Engineer

Bureau of Land Management
Farmington Field Office
6251 College Blvd
Farmington, NM 87402

Email: krennick@blm.gov

Mobile & Text: 505.497.0019

From: John LaMond <jlamond@hilcorp.com>

Sent: Tuesday, March 26, 2024 10:44 AM

To: Kuehling, Monica, EMNRD <monica.kuehling@emnrd.nm.gov>; Rennick, Kenneth G <krennick@blm.gov>; Kade, Matthew H <mkade@blm.gov>

Cc: Farmington Regulatory Techs <FarmingtonRegulatoryTechs@hilcorp.com>; Brice Clyde - (C) <Brice.Clyde@hilcorp.com>; Clay Padgett <cpadgett@hilcorp.com>; Lee Murphy <lmurphy@hilcorp.com>; Max Weaver <mweaver@hilcorp.com>; Rustin

Mikeska <rmikeska@hilcorp.com>; John LaMond <jamond@hilcorp.com>

Subject: [EXTERNAL] P&A Revision Request for Hilcorp's HUERFANO UNIT 28 (API # 3004505911)

This email has been received from outside of DOI - Use caution before clicking on links, opening attachments, or responding.

Good morning Monica and Kenny,

Hilcorp is planning to work on the HUERFANO UNIT 28 (API # 3004505911) P&A in the near future.

I have attached the approved P&A NOI, as well as an updated procedure based on the COAs in the approved NOI.

Based on the COAs, Hilcorp requests the following adjustments to the approved procedure:

- PLUG #1a: The CICR will be set at 2,024' (Int. Surface Shoe @ 2,076', PC Perfs @ 2,364', PC Top @ 2,371'). **(NMOCD provided verbal approval for this after discussing the depths compared to the original COAs)**
 - Pump 102' of cement beneath the CICR from 2,024' to 2,126' (50' beneath the intermediate shoe).
- PLUG #1b: The CIBP will be set at 2,014' (Int. Surface Shoe @ 2,076', PC Perfs @ 2,364', PC Top @ 2,371') as stated in the original NOI. **(NMOCD provided verbal approval for this after discussing the depths compared to the original COAs)**
 - Pump 150' of cement on top of the CIBP from 1,864' to 2,014'.
- All other plugs have been adjusted according to the BLM & NMOCD formation tops. Please see the revised procedure attached and below.



HILCORP ENERGY COMPANY
HUERFANO UNIT 28
P&A NOI

API #: 3004505911

JOB PROCEDURES

1. Contact NMOCD and BLM (where applicable) 24 hours prior to MIRU.
2. Hold pre-job safety meeting. Verify cathodic is off. Comply with all NMOCD, BLM, and HEC safety and environmental regulations.
3. MIRU service rig and associated equipment; NU and test BOP.
4. *NOTE: The following plugs (Plug #1, #2, #3, & #4) are designed based on the **CBL run on 12-12-1997**.
5. Set a **3-1/2" CICR** at **+/- 2,024'** to isolate the **PC Perfs**. Establish injection.
6. **PLUG #1a: 5sx of Class G Cement (15.8 PPG, 1.15 yield); Int. Casing Shoe @ 2,076' | PC Top @ 2,071' | PC Perfs @ 2,064':**
 Pump a 5 sack cement plug beneath the 3-1/2" CICR inside the 3-1/2" casing (est. **TOC @ +/- 2,024'** & est. **BOC @ +/- 2,126'**).
7. Set a **3-1/2" CIBP** at **+/- 2,014'** to isolate the **PC Perfs**.
8. Load the well as needed. Pressure test the casing above the plug set @ **2,014'** to **560 psig**.
9. TIH w/ tubing/work string to **+/- 2,014'**.
10. **PLUG #1b: 7sx of Class G Cement (15.8 PPG, 1.15 yield); Int. Casing Shoe @ 2,076' | PC Top @ 2,071' | PC Perfs @ 2,064':**
 Pump a 7 sack balanced cement plug inside the 3-1/2" casing (est. **TOC @ +/- 1,864'** & est. **BOC @ +/- 2,014'**). *Note cement plug lengths & volume excess.
11. POOH w/ work string to **+/- 1,661'**.
12. **PLUG #2: 7sx of Class G Cement (15.8 PPG, 1.15 yield); FRD Top @ 1,611':**
 Pump a 7 sack balanced cement plug inside the 3-1/2" casing (est. **TOC @ +/- 1,511'** & est. **BOC @ +/- 1,661'**). *Note cement plug lengths & volume excess.
13. POOH w/ work string. TIH & perforate squeeze holes @ **+/- 1,386'**. RIH w/ **3-1/2" CICR** and set CICR @ **+/- 1,336'**. TIH w/ work string & sting into CIC injection.
14. **PLUG #3: 82sx of Class G Cement (15.8 PPG, 1.15 yield); KRD Top @ 1,336' | OJO Top @ 1,105':**
 Pump 65sx of cement in the 5-1/2" casing X 7-7/8" open hole annulus (est. **TOC @ +/- 955'** & est. **BOC @ +/- 1,386'**). Pump an additional 3sx of cement in the 3-1/2" CICR (est. **TOC @ +/- 1,336'** & est. **BOC @ +/- 1,386'**). Sting out of retainer, pump a 14 sack balanced cement plug on top of the CICR. (est. **TOC @ +/- 1,005'** & est. **BOC @ +/- 1,336'**). WOC for 4 hrs, tag WOC w/ work string. *Note cement plug lengths and volumes account for excess.
15. POOH w/ work string. TIH & perforate squeeze holes @ **+/- 408'**. Establish circulation.
16. **PLUG #4: 43sx of Class G Cement (15.8 PPG, 1.15 yield); Surf. Casing Shoe @ 106':**
 Pump 8sx of cement in the 5-1/2" casing X 7-7/8" open hole annulus (est. **TOC @ +/- 106'** & est. **BOC @ +/- 156'**). Continue pumping 18sx of cement in the 5-1/2" casing X 8-5/8" casing annulus (est. **TOC @ +/- 0'** & est. **BOC @ +/- 106'**). Continue pumping 10sx of cement in the 5-1/2" casing X 3-1/2" casing annulus (est. **TOC @ +/- 0'** & est. **BOC @ +/- 156'**). Pump an 7 sack balanced cement plug inside the 3-1/2" casing (est. **TOC @ +/- 0'** & est. **BOC @ +/- 156'**). WOC for 4 hrs, tag WOC w/ work string.
17. ND BOP, cut off casing below casing flange. Top off cement in surface casing annulus, if needed. Install a P&A marker with cement to comply with regulatory requirements. Rig down, move off location, cut off anchors, and restore location.

Do the NMOCD and BLM approve of the revised procedure?

Thanks,

John LaMond

Operations Engineer – Technical Services
Hilcorp Energy Company
1111 Travis
Houston, TX 77002
346-237-2210 (Office)
832-754-9692 (Cell)
jlamond@hilcorp.com

The information contained in this email message is confidential and may be legally privileged and is intended only for the use of the individual or entity named above. If you are not an intended recipient or if you have received this message in error, you are hereby notified that any dissemination, distribution, or copy of this email is strictly prohibited. If you have received this email in error, please immediately notify us by return email or telephone if the sender's phone number is listed above, then promptly and permanently delete this message.

While all reasonable care has been taken to avoid the transmission of viruses, it is the responsibility of the recipient to ensure that the onward transmission, opening, or use of this message and any attachments will not adversely affect its systems or data. No responsibility is accepted by the company in this regard and the recipient should carry out such virus and other checks as it considers appropriate.

The information contained in this email message is confidential and may be legally privileged and is intended only for the use of the individual or entity named above. If you are not an intended recipient or if you have received this message in error, you are hereby notified that any dissemination, distribution, or copy of this email is strictly prohibited. If you have received this email in error, please immediately notify us by return email or telephone if the sender's phone number is listed above, then promptly and permanently delete this message.

While all reasonable care has been taken to avoid the transmission of viruses, it is the responsibility of the recipient to ensure that the onward transmission, opening, or use of this message and any attachments will not adversely affect its systems or data. No responsibility is accepted by the company in this regard and the recipient should carry out such virus and other checks as it considers appropriate.

The information contained in this email message is confidential and may be legally privileged and is intended only for the use of the individual or entity named above. If you are not an intended recipient or if you have received this message in error, you are hereby notified that any dissemination, distribution, or copy of this email is strictly prohibited. If you have received this email in error, please immediately notify us by return email or telephone if the sender's phone number is listed above, then promptly and permanently delete this message.

While all reasonable care has been taken to avoid the transmission of viruses, it is the responsibility of the recipient to ensure that the onward transmission, opening, or use of this message and any attachments will not adversely affect its systems or data. No responsibility is accepted by the company in this regard and the recipient should carry out such virus and other checks as it considers appropriate.

The information contained in this email message is confidential and may be legally privileged and is intended only for the use of the individual or entity named above. If you are not an intended recipient or if you have received this message in error, you are hereby notified that any dissemination, distribution, or copy of this email is strictly prohibited. If you have received this email in error, please immediately notify us by return email or telephone if the sender's phone number is listed above, then promptly and permanently delete this message.

While all reasonable care has been taken to avoid the transmission of viruses, it is the responsibility of the recipient to ensure that the onward transmission, opening, or use of this message and any attachments will not adversely affect its systems or data. No responsibility is accepted by the company in this regard and the recipient should carry out such virus and other checks as it considers appropriate.

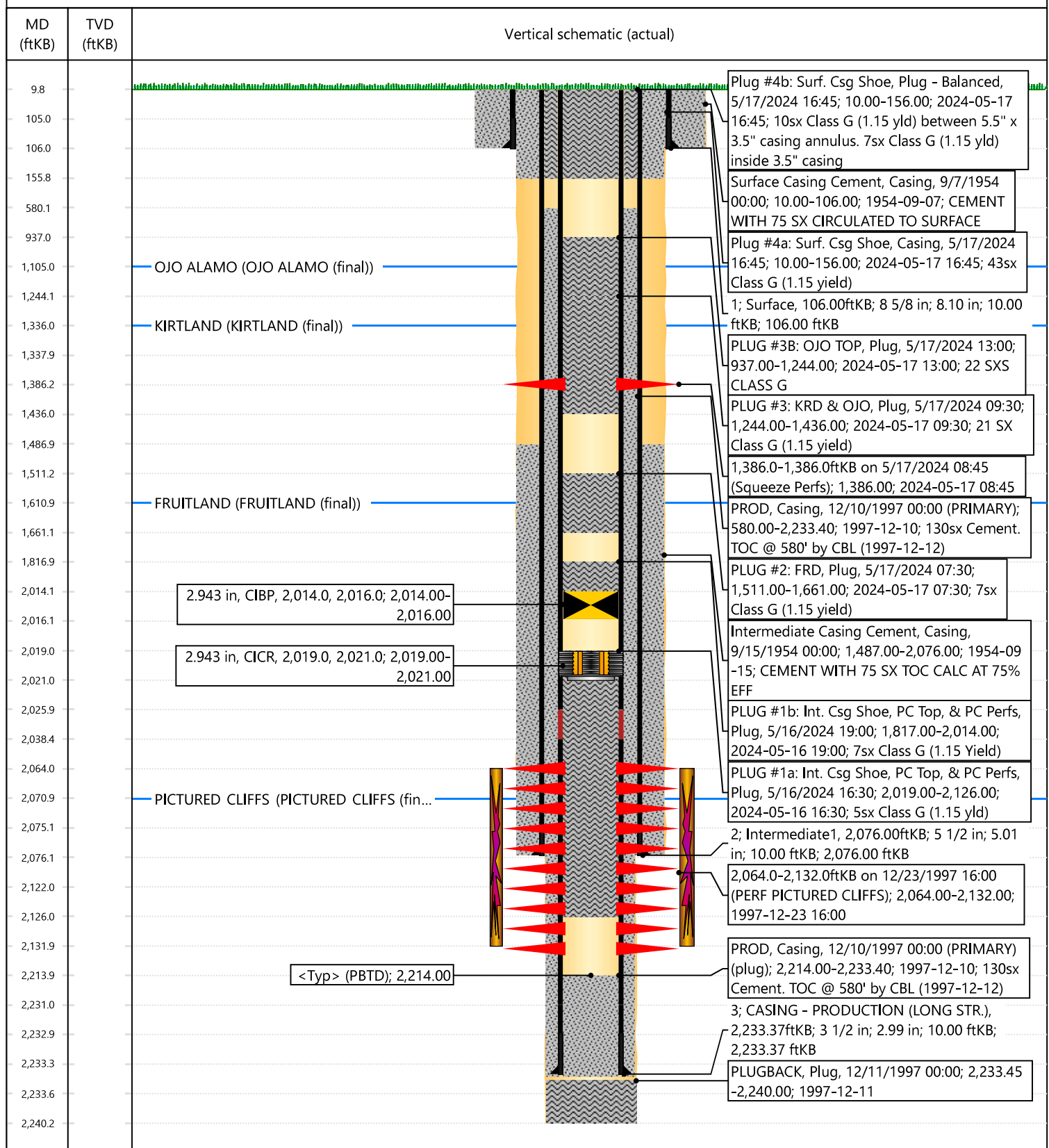


Current Schematic - Version 3

Well Name: HUERFANO UNIT #28

API / UWI 3004505911	Surface Legal Location 009-026N-009W-P	Field Name BALLARD PICTURED CLIFFS #0060	Route 0907	State/Province NEW MEXICO	Well Configuration Type VERTICAL
Ground Elevation (ft) 6,385.00	Original KB/RT Elevation (ft) 6,395.00	Tubing Hanger Elevation (ft)	RKB to GL (ft) 10.00	KB-Casing Flange Distance (ft)	KB-Tubing Hanger Distance (ft)

Original Hole [VERTICAL]



District I
1625 N. French Dr., Hobbs, NM 88240
Phone:(575) 393-6161 Fax:(575) 393-0720
District II
811 S. First St., Artesia, NM 88210
Phone:(575) 748-1283 Fax:(575) 748-9720
District III
1000 Rio Brazos Rd., Aztec, NM 87410
Phone:(505) 334-6178 Fax:(505) 334-6170
District IV
1220 S. St Francis Dr., Santa Fe, NM 87505
Phone:(505) 476-3470 Fax:(505) 476-3462

State of New Mexico
Energy, Minerals and Natural Resources
Oil Conservation Division
1220 S. St Francis Dr.
Santa Fe, NM 87505

COMMENTS

Action 346935

COMMENTS

Operator: HILCORP ENERGY COMPANY 1111 Travis Street Houston, TX 77002	OGRID: 372171
	Action Number: 346935
	Action Type: [C-103] Sub. Plugging (C-103P)

COMMENTS

Created By	Comment	Comment Date
plmartinez	DATA ENTRY PM	5/28/2024

District I
1625 N. French Dr., Hobbs, NM 88240
Phone:(575) 393-6161 Fax:(575) 393-0720
District II
811 S. First St., Artesia, NM 88210
Phone:(575) 748-1283 Fax:(575) 748-9720
District III
1000 Rio Brazos Rd., Aztec, NM 87410
Phone:(505) 334-6178 Fax:(505) 334-6170
District IV
1220 S. St Francis Dr., Santa Fe, NM 87505
Phone:(505) 476-3470 Fax:(505) 476-3462

State of New Mexico
Energy, Minerals and Natural Resources
Oil Conservation Division
1220 S. St Francis Dr.
Santa Fe, NM 87505

CONDITIONS

Action 346935

CONDITIONS

Operator: HILCORP ENERGY COMPANY 1111 Travis Street Houston, TX 77002	OGRID: 372171
	Action Number: 346935
	Action Type: [C-103] Sub. Plugging (C-103P)

CONDITIONS

Created By	Condition	Condition Date
mkuehling	well plugged 5/20/2024	5/28/2024