

I. REQUEST FOR ALLOWABLE AND AUTHORIZATION TO TRANSPORT

¹ Operator name and Address Hilcorp Energy Company 382 Road 3100 Aztec, NM 87410		² OGRID Number 372171
		³ Reason for Filing Code/ Effective Date RC
⁴ API Number 30-045-21199	⁵ Pool Name Basin Mancos	
⁶ Pool Code 97232		
⁷ Property Code 318608	⁸ Property Name LIVELY	⁹ Well Number 12

II. ¹⁰ Surface Location

Ul or lot no. L	Section 36	Township 28N	Range 08W	Lot Idn	Feet from the 1650	North/South Line South	Feet from the 990	East/West Line West	County San Juan
--------------------	---------------	-----------------	--------------	---------	-----------------------	---------------------------	----------------------	------------------------	--------------------

¹¹ Bottom Hole Location

UL or lot no.	Section	Township	Range	Lot Idn	Feet from the	North/South Line	Feet from the	East/West Line	County Choose an item.
¹² Lse Code F	¹³ Producing Method Code F	¹⁴ Gas Connection Date	¹⁵ C-129 Permit Number	¹⁶ C-129 Effective Date	¹⁷ C-129 Expiration Date				

III. Oil and Gas Transporters

¹⁸ Transporter OGRID	¹⁹ Transporter Name and Address	²⁰ O/G/W
248440	Western Refinery	O
151618	Enterprise	G

IV. Well Completion Data

4/25/2024: Email approval by Sarah McGrath to extend C-104 expiration date to 5/31/2024.

²¹ Spud Date 4/20/1973	²² Ready Date 5/12/2024	²³ TD 7,310'	²⁴ PBTD 7,283'	²⁵ Perforations 6,171' – 6,445'	²⁶ DHC, MC DHC-5366
²⁷ Hole Size	²⁸ Casing & Tubing Size	²⁹ Depth Set	³⁰ Sacks Cement		
13 3/4"	9 5/8" H-40, 32#	302'	210 sx		
8 3/4"	7", J-55, 20# & 17#	3,052'	250 sx		
6 1/4"	4 1/2" K-55, 11.6# & 10.5#	7,310'	200 sx		
	2 3/8", J-55, 4.7#	7,101'			

V. Well Test Data

³¹ Date New Oil	³² Gas Delivery Date 5/12/2024	³³ Test Date 5/12/2024	³⁴ Test Length 4 hrs	³⁵ Tbg. Pressure 420 psi	³⁶ Csg. Pressure 275 psi
³⁷ Choke Size 20/64"	³⁸ Oil 0 bbl	³⁹ Water 0 bbl	⁴⁰ Gas 81 mcf		⁴¹ Test Method

⁴² I hereby certify that the rules of the Oil Conservation Division have been complied with and that the information given above is true and complete to the best of my knowledge and belief. Signature: Cherylene Weston		OIL CONSERVATION DIVISION	
		Approved by:	
		Title:	
		Approval Date:	
Printed name: Cherylene Weston			
Title: Operations Regulatory Tech Sr.			
E-mail Address: cweston@hilcorp.com			
Date: 5/24/2024	Phone: 713-289-2615		

I. REQUEST FOR ALLOWABLE AND AUTHORIZATION TO TRANSPORT

¹ Operator name and Address Hilcorp Energy Company 382 Road 3100 Aztec, NM 87410		² OGRID Number 372171
		³ Reason for Filing Code/ Effective Date RC
⁴ API Number 30-045-21199	⁵ Pool Name Blanco Mesaverde	⁶ Pool Code 72319
⁷ Property Code 318608	⁸ Property Name LIVELY	⁹ Well Number 12

II. ¹⁰ Surface Location

Ul or lot no. L	Section 36	Township 28N	Range 08W	Lot Idn	Feet from the 1650	North/South Line South	Feet from the 990	East/West Line West	County San Juan
--------------------	---------------	-----------------	--------------	---------	-----------------------	---------------------------	----------------------	------------------------	--------------------

¹¹ Bottom Hole Location

UL or lot no.	Section	Township	Range	Lot Idn	Feet from the	North/South Line	Feet from the	East/West Line	County Choose an item.
¹² Lse Code F	¹³ Producing Method Code F	¹⁴ Gas Connection Date	¹⁵ C-129 Permit Number	¹⁶ C-129 Effective Date	¹⁷ C-129 Expiration Date				

III. Oil and Gas Transporters

¹⁸ Transporter OGRID	¹⁹ Transporter Name and Address	²⁰ O/G/W
248440	Western Refinery	O
151618	Enterprise	G

IV. Well Completion Data 4/25/2024: Email approval by Sarah McGrath to extend C-104 expiration date to 5/31/2024.

²¹ Spud Date 4/20/1973	²² Ready Date 5/12/2024	²³ TD 7,310'	²⁴ PBTD 7,283'	²⁵ Perforations 4,413' – 5,328'	²⁶ DHC, MC DHC-5366
²⁷ Hole Size	²⁸ Casing & Tubing Size	²⁹ Depth Set	³⁰ Sacks Cement		
13 3/4"	9 5/8" H-40, 32#	302'	210 sx		
8 3/4"	7", J-55, 20# & 17#	3,052'	250 sx		
6 1/4"	4 1/2" K-55, 11.6# & 10.5#	7,310'	200 sx		
	2 3/8", J-55, 4.7#	7,101'			

V. Well Test Data

³¹ Date New Oil	³² Gas Delivery Date 5/12/2024	³³ Test Date 5/12/2024	³⁴ Test Length 4 hrs	³⁵ Tbg. Pressure 420 psi	³⁶ Csg. Pressure 275 psi
³⁷ Choke Size 20/64	³⁸ Oil 0 bbl	³⁹ Water 0 bbl	⁴⁰ Gas 81 mcf		⁴¹ Test Method
⁴² I hereby certify that the rules of the Oil Conservation Division have been complied with and that the information given above is true and complete to the best of my knowledge and belief. Signature: Cherylene Weston			OIL CONSERVATION DIVISION		
Printed name: Cherylene Weston			Approved by:		
Title: Operations Regulatory Tech Sr.			Title:		
E-mail Address: cweston@hilcorp.com			Approval Date:		
Date: 5/24/2024		Phone: 713-289-2615			

Well Name: LIVELY

Well Location: T28N / R8W / SEC 36 /
NWSW / 36.6152 / -107.63745

County or Parish/State: SAN
JUAN / NM

Well Number: 12

Type of Well: CONVENTIONAL GAS
WELL

Allottee or Tribe Name:

Lease Number: NMNM015150

Unit or CA Name:

Unit or CA Number:

US Well Number: 3004521199

Operator: HILCORP ENERGY
COMPANY

Subsequent Report

Sundry ID: 2790472

Type of Submission: Subsequent Report

Type of Action: Recompletion

Date Sundry Submitted: 05/24/2024

Time Sundry Submitted: 08:53

Date Operation Actually Began: 03/01/2024

Actual Procedure: The subject well was recompleted into the Mesaverde and Mancos formations per the attached reports.

SR Attachments

Actual Procedure

Lively_12_RC_Well_Operations_Summary_20240524085209.pdf

Well Name: LIVELY

Well Location: T28N / R8W / SEC 36 /
NWSW / 36.6152 / -107.63745

County or Parish/State: SAN
JUAN / NM

Well Number: 12

Type of Well: CONVENTIONAL GAS
WELL

Allottee or Tribe Name:

Lease Number: NMNM015150

Unit or CA Name:

Unit or CA Number:

US Well Number: 3004521199

Operator: HILCORP ENERGY
COMPANY

Operator

I certify that the foregoing is true and correct. Title 18 U.S.C. Section 1001 and Title 43 U.S.C. Section 1212, make it a crime for any person knowingly and willfully to make to any department or agency of the United States any false, fictitious or fraudulent statements or representations as to any matter within its jurisdiction. Electronic submission of Sundry Notices through this system satisfies regulations requiring a

Operator Electronic Signature: CHERYLENE WESTON

Signed on: MAY 24, 2024 08:52 AM

Name: HILCORP ENERGY COMPANY

Title: Operations/Regulatory Tech - Sr

Street Address: 1111 TRAVIS STREET

City: HOUSTON

State: TX

Phone: (713) 289-2615

Email address: CWESTON@HILCORP.COM

Field

Representative Name:

Street Address:

City:

State:

Zip:

Phone:

Email address:

BLM Point of Contact

BLM POC Name: KENNETH G RENNICK

BLM POC Title: Petroleum Engineer

BLM POC Phone: 5055647742

BLM POC Email Address: krennick@blm.gov

Disposition: Accepted

Disposition Date: 05/24/2024

Signature: Kenneth Rennick



Well Operations Summary L48

Well Name: LIVELY #12

API: 3004521199

Field: BASIN DAKOTA (PRORATED GAS)

State: NEW MEXICO

Permit to Drill (PTD) #:

Sundry #:

Rig/Service: DWS 34

Jobs

Actual Start Date: 3/1/2024

End Date:

Report Number

Report Start Date

Report End Date

1

3/1/2024

3/1/2024

Operation

MOVE IN, RIG UP EXPERT SLICKLINE SERVICES. SITP- 220 PSI. SICP- 220 PSI.
MADE 2- RUNS.
CYCLE PLUNGER TO SURFACE AND RECOVERED.
1ST RUN: 2.00" O.D. R.B. TOOL TO 7,114' SLM, RECOVER BUMPER SPRING.
2ND RUN: 1.50" O.D. IMPRESSION BLOCK TO 7,275' SLM, TAGGED FILL (PBSD @ 7,285').
NO FLUID DETECTED IN WELL.

Report Number

Report Start Date

Report End Date

2

3/4/2024

3/4/2024

Operation

TRAVEL TO O'KELLEY #1H WELLSITE. CREW ON HILCORP YARD AT 0500 HOURS.

PJSA WITH CREWS.

START RIG MOVE OPERATIONS. MOBILIZED HEC RIG EQUIPMENT FROM THE O'KELLEY #1H TO THE
LIVELY #12 WELLSITE (42.5 MILE MOVE). LEASE ROADS VERY ROUGH.

RIG UP SERVICE UNIT. CONTINUE TO MOVE IN RIG EQUIPMENT. LEASE ROAD VERY ROUGH AND LOCATION IS SMALL. HAD TO PULL SEVERAL TRUCKS
UP STEEP HILL TO WELLSITE, SLOWING RIG MOVE DOWN.

CHECK WELL PRESSURES. SITP-90 PSI. SICP-90 PSI. SIICP-0 PSI. SIBHP-0 PSI. OPEN WELL. BLOWDOWN IN 10 MINUTES TO A LIGHT BLOW.

NIPPLE DOWN WELLHEAD. WELLHEAD BOLTS NEED TO BE REPLACED. LOCKDOWN PINS IN POOR CONDITION. NIPPLE UP BOP ASSEMBLY. FUNCTION
TESTED GOOD.

MOVE IN WELLCHECK SERVICES FOR MONTHLY BOP TEST.
PRESSURE TEST BOP. TESTED BLIND RAMS TO 250 PSI LOW AND 2,500 PSI HIGH (GOOD). TESTED 2 3/8" PIPE RAMS TO 250 PSI LOW AND 2,500 PSI HIGH
(GOOD).
CHARTED BY WELLCHECK SERVICES. RIG DOWN, RELEASED WELLCHECK SERVICES.

RIG UP FLOOR & TUBING HANDLING TOOLS. UNSET TBG HANGER AT 40,000 LBS. PULL TUBING HANGER TO THE FLOOR & REMOVE. TUBING WAS
DRAGGING WHILE PULLING PULLING UP. WILL NOT TAG FOR FILL.

MOVE IN, RIG UP PREMIER NDT SERVICES.
BEGIN TUBING SCAN OPERATIONS.
SCANNED 230 - 2 3/8" TUBING JOINTS:
134 JOINTS - YELLOW BAND.
54 JOINTS - BLUE BAND (PITTING).
30 JOINTS - GREEN BAND (PITTING).
12 JOINTS - RED BAND (PITTING & 1- CRIMPED).
134 JOINTS PASSED SCAN INSPECTION, 96 JOINTS FAILED (PITTING & 1- CRIMPED). THE BAD JOINTS WERE PRIMARILY IN THE MIDDLE PORTION OF THE
STRING. ALSO HAD SOME EXTERNAL SCALE COATING ON LOWER PART OF STRING. RIG DOWN, MOVE OUT PREMIER SERVICES.
ORDERED OUT 100- REPLACEMENT TUBING JOINTS FROM TUBOSCOPE TO BE LOADED AND DELIVERED AS SOON AS POSSIBLE TOMORROW.

SHUT IN, SECURED WELL. WINTERIZED & SECURED RIG AND ALL EQUIPMENT. SHUTDOWN JOB OPERATIONS FOR THE NIGHT.

CREW TRAVEL TO YARD.

Report Number

Report Start Date

Report End Date

3

3/5/2024

3/5/2024

Operation

CREW TRAVEL TO WELLSITE. CREW ON HILCORP YARD AT 0500 HOURS.

PJSA WITH CREW. SERVICE, START AND WARM UP SERVICE RIG & PUMP.

CHECK WELL PRESSURES. SICP-140 PSI. SIICP- 0 PSI. SIBHP- 0 PSI.
OPEN WELL. BLOWDOWN IN 15 MINUTES TO CONTINUOUS FLOW.

MAKE UP 4 1/2" CASING CLEANOUT BHA ASSEMBLY. PREPARE TO TALLY & TRIP IN.
1- 3.75" O.D. X .40' ROLLER BIT.
1- 3.75" O.D. X 3.20 STRING MILL.
1- 3.125" O.D. X 1.33' BIT SUB.

TALLY & TRIP IN WITH 2 3/8" YELLOW BAND WELL TUBING FROM THE DERRICK. TRIPPED TO 4,483'. WAIT ON REPLACEMENT TUBING.

WAIT ON REPLACEMENT TUBING TO BE LOADED AND DELIVERED. CNJ TRACK HOE FILLED IN CRATER ON LEASE ROAD JUST BEFORE THE WELLSITE.

MOVE IN, UNLOAD REPLACEMENT TUBING. RECEIVED 100- JOINTS (3,146.90') OF 2 3/8" 4.7# J-55 WHITE BAND TUBING FROM TUBOSCOPE PIPE YARD.
SEND IN 96- JOINTS OF 2 3/8" 4.7# J-55 WELL TUBING THAT FAILED SCAN TESTING TO TUBOSCOPE PIPE YARD.
HAD TO USE 2-RIG UP TRUCKS DUE TO STEEP HILL INTO WELLSITE.



Well Operations Summary L48

Well Name: LIVELY #12

API: 3004521199	Field: BASIN DAKOTA (PRORATED GAS)	State: NEW MEXICO
	Sundry #:	Rig/Service: DWS 34

Operation		
CONTINUE TO TALLY & TRIP IN WITH REPLACEMENT 2 3/8" WHITE BAND TUBING. TRIPPED TO 7,015' (TOP DAKOTA PERF AT 7,014'). TRIP OUT STANDING BACK TUBING INTO THE DERRICK.		
MAKE UP HILCORP 4 1/2" CAST IRON BRIDGE PLUG.		
TRIP IN WITH 4 1/2" CIBP TO 6,989' AND SET. APPEARED TO HAVE A GOOD SET.		
RIG UP LINE TO THE TUBING AND LOAD 4 1/2" CASING ABOVE THE CIBP AND BELOW THE BOTTOM CHACRA PERFORATION WITH 42 BBLS OF WATER. LAYDOWN 4 JOINTS OF TUBING.		
SHUT IN, SECURED WELL. WINTERIZED & SECURED RIG AND ALL EQUIPMENT. SHUTDOWN JOB OPERATIONS FOR THE NIGHT.		
CREW TRAVEL TO YARD.		
Report Number 4	Report Start Date 3/6/2024	Report End Date 3/6/2024

Operation		
CREW TRAVEL TO WELLSITE. CREW ON HILCORP YARD AT 0500 HOURS.		
PJSA WITH CREW. SERVICE, START AND WARM UP SERVICE RIG & PUMP.		
CHECK WELL PRESSURES. SITP-100 PSI. SICP-110 PSI. SIIICP- 0 PSI. SIBHP- 0 PSI.		
OPEN WELL. BLOWDOWN IN 5 MINUTES TO SLIGHT CONTINUOUS FLOW.		
CONTINUE TRIP OUT OF WELL WITH TUBING/SETTING TOOL.		
MAKE UP HILCORP 4 1/2" CAST IRON CEMENT RETAINER.		
TRIP IN WITH 4 1/2" CEMENT RETAINER TO 3,298' AND SET. APPEARED TO HAVE A GOOD SET.		
RIG UP LINE TO THE TUBING AND LOAD 2 3/8" & 4 1/2" CASING ANNULUS ABOVE THE RETAINER WITH 47 BBLS OF WATER.		
WAIT ON CEMENT CREW & EQUIPMENT.		
MOVE IN, RIG UP HEC CEMENT EQUIPMENT & LINES. TEST LINES TO 2,500 PSI.		
ESTABLISH INJECTION RATE THRU CEMENT RETAINER INTO CHACRA PERFS (3,344'- 4,066') @ 3.0 BPM @ 50 PSI. PUMPED 15 BBLS WATER.		
MIX & PUMP 126 SACKS (26 BBLS) OF CLASS "G" CEMENT AT 15.8 PPG WITH 1.15 FT3 YIELD.		
CAUGHT PRESSURE AT 11 BBLS OF DISPLACEMENT. DISPLACED CEMENT WITH 12.5 BBLS OF WATER. STING OUT OF RETAINER. REVERSED OUT WITH 13 BBLS WATER.		
PUMP RATE MIN: 1.0 BPM.		
PUMP RATE MAX: 3.0 BPM.		
PUMP PSI MIN: 50 PSI.		
PUMP PSI MAX: 400 PSI.		
BBLS SLURRY INTO CHACRA PERFS: 13.2 BBLS.		
RIG DOWN, RELEASED CEMENT EQUIPMENT & CREW.		
TRIP OUT OF WELL WITH TUBING/RETAINER STINGER.		
SHUT IN, SECURED WELL. WINTERIZED & SECURED RIG AND ALL EQUIPMENT. SHUTDOWN JOB OPERATIONS FOR THE NIGHT.		
CREW TRAVEL TO YARD.		
Report Number 5	Report Start Date 3/7/2024	Report End Date 3/7/2024

Operation		
CREW TRAVEL TO WELLSITE. CREW ON HILCORP YARD AT 0500 HOURS.		
PJSA WITH CREW. SERVICE, START AND WARM UP SERVICE RIG & PUMP.		
CHECK WELL PRESSURES. SICP-0 PSI. SIIICP- 0 PSI. SIBHP- 0 PSI.		
OPEN WELL. NO PRESSURE ON WELL TO BLOWDOWN.		
MEASURE & MAKE UP CEMENT DRILLOUT ASSEMBLY FOR 4 1/2" CASING: 1- 3.875" O.D. X .30' ROLLER BIT. 1- 3.75" O.D. X 2.00' BIT SUB. 1- 3.00" O.D. X 30.01' DRILL COLLAR (20 LBS/FT). 1- 3.00" O.D. X 30.53' DRILL COLLAR (20 LBS/FT). 1- 3.00" O.D. X 30.81' DRILL COLLAR (20 LBS/FT). 1- 3.00" O.D. X 29.98' DRILL COLLAR (20 LBS/FT). 1- 3.00" O.D. X 30.25' DRILL COLLAR (20 LBS/FT). 1- 3.00" O.D. X 30.27' DRILL COLLAR (20 LBS/FT). 1- 3.0625" O.D. X 1.50' TUBING CROSSOVER.		
START TRIP INTO WELL WITH 2 3/8" TUBING/BIT BHA. TAGGED CEMENT AT 3,270' (CEMENT RETAINER AT 3,298').		
RIG UP POWER SWIVEL ASSEMBLY. PREPARE TO BEGIN DRILLING OUT CEMENT & CEMENT RETAINER.		
BREAK CIRCULATION WITH 5.0 BBLS OF RIG PIT WATER, BEGIN DRILLING OUT CEMENT ABOVE CR FROM 3,270' - 3,298'. DRILLED THRU CEMENT RETAINER @ 3,298' (2 HOUR DRILL TIME).		
CONTINUE DRILLING HARD CEMENT BELOW RETAINER TO 3,446' (CHACRA PERFS: 3,344'-4,066'). CIRCULATE UNTIL RETURNS WERE CLEAN.		
SHUTDOWN CIRCULATION, HANG BACK POWER SWIVEL INTO DERRICK. LAYDOWN 1 TUBING JOINT.		
SHUT IN, SECURED WELL. WINTERIZED & SECURED RIG AND ALL EQUIPMENT. SHUTDOWN JOB OPERATIONS FOR THE EVENING.		
CREW TRAVEL TO YARD.		



Well Operations Summary L48

Well Name: LIVELY #12

API: 3004521199

Field: BASIN DAKOTA (PRORATED GAS)

State: NEW MEXICO

Sundry #:

Rig/Service: DWS 34

Report Number 6	Report Start Date 3/8/2024	Report End Date 3/8/2024
--------------------	-------------------------------	-----------------------------

Operation

CREW TRAVEL TO WELLSITE. CREW ON HILCORP YARD AT 0500 HOURS.
 PJSA WITH CREW. SERVICE, START AND WARM UP SERVICE RIG & PUMP.
 CHECK WELL PRESSURES. SITP-0 PSI. SICP-0 PSI. SIIICP- 0 PSI. SIBHP- 0 PSI.
 OPEN WELL. NO PRESSURE ON WELL TO BLOWDOWN.
 RIG UP POWER SWIVEL ASSEMBLY. PREPARE TO CONTINUE DRILLING OUT CEMENT.
 BREAK CIRCULATION WITH 1.0 BBL OF RIG PIT WATER, CONTINUE DRILLING HARD CEMENT BELOW RETAINER TO 3,727' (CHACRA PERFS: 3,344'-4,066').
 CIRCULATED UNTIL RETURNS WERE CLEAN.
 SHUTDOWN CIRCULATION. HANG BACK POWER SWIVEL INTO DERRICK. LAYDOWN 1 TUBING JOINT.
 SHUT IN, SECURED WELL. WINTERIZED & SECURED RIG AND ALL EQUIPMENT. SHUTDOWN JOB OPERATIONS FOR THE WEEKEND.
 CREW TRAVEL TO YARD.

Report Number 7	Report Start Date 3/11/2024	Report End Date 3/11/2024
--------------------	--------------------------------	------------------------------

Operation

CREW TRAVEL TO WELLSITE. CREW ON HILCORP YARD AT 0500 HOURS.
 PJSA WITH CREW. SERVICE, START AND WARM UP SERVICE RIG & PUMP.
 CHECK WELL PRESSURES. SITP-0 PSI. SICP-0 PSI. SIIICP- 0 PSI. SIBHP- 0 PSI.
 OPEN WELL. NO PRESSURE ON WELL TO BLOWDOWN.
 RIG UP POWER SWIVEL ASSEMBLY. PREPARE TO CONTINUE DRILLING OUT CEMENT.
 BREAK CIRCULATION WITH 1.0 BBL OF RIG PIT WATER, CONTINUE DRILLING OUT HARD CEMENT BELOW RETAINER FROM 3,727' TO 3,852' (CHACRA PERFS: 3,344'-4,066'). LOST FLUID CIRCULATION AT THIS DEPTH (3,852'). ATTEMPT TO PRESSURE TEST 4 1/2" CASING TO 500 PSI. LOST ALL PRESSURE IN LESS THAN 1 MINUTE.
 CALL HEC ENGINEERING. WILL SWITCH TO AIR/MIST AND DRILL OUT ANY CEMENT STRINGERS TO THE BOTTOM PERF (4,066') OF THE CHACRA ZONE.
 CALL FOR A LOAD OF WATER.

RIG UP AIR UNIT. LAY OUT LINE TO TUBING MANIFOLD. TEST LINES TO 1,600 PSI.

START AIR UNIT AT 1,200 CFM AT 1,000 TO 1,700 PSI WITHOUT MIST. WELL UNLOADED 40 BBLS OF WATER TO TANK. START MIST AT 15 BPH. CONTINUE DRILLING ON CEMENT. WENT THRU CEMENT AT 4,008'. CONTINUE DOWN TO 4,088'. CIRCULATED UNTIL RETURNS WERE CLEAN.
 1 - 3 GAL PER 10 BBLS: CL-299 (CORROSION INHIBITOR).
 1 - 1 1/2 GAL PER 10 BBLS: F-86 (FOAMER).

SHUTDOWN AIR/MIST CIRCULATION. RIG DOWN & HANG BACK POWER SWIVEL INTO DERRICK. LAYDOWN 24 JOINTS ONTO THE FLOAT. PULL TUBING ABOVE CHACRA PERFS TO 3,290'.

SHUT IN, SECURED WELL. WINTERIZED & SECURED RIG AND ALL EQUIPMENT. SHUTDOWN JOB OPERATIONS FOR THE NIGHT.

CREW TRAVEL TO YARD.

Report Number 8	Report Start Date 3/12/2024	Report End Date 3/12/2024
--------------------	--------------------------------	------------------------------

Operation

CREW TRAVEL TO WELLSITE. CREW ON HILCORP YARD AT 0500 HOURS.
 PJSA WITH CREW. SERVICE, START AND WARM UP SERVICE RIG & PUMP.
 CHECK WELL PRESSURES. SITP-5 PSI. SICP-5 PSI. SIIICP- 0 PSI. SIBHP- 0 PSI.
 OPEN WELL. BLOWDOWN IN LESS THAN 1 MINUTE.
 CONTINUE TRIP OUT OF WELL WITH DRILLING ASSEMBLY/TUBING.
 MAKE UP MULE COLLAR. TRIP IN WITH TUBING FOR CEMENT JOB. TRIPPED TO 4,106'.
 WAIT ON CEMENT CREW & EQUIPMENT.
 MOVE IN, RIG UP DRAKE CEMENT EQUIPMENT & LINES. TEST LINES TO 1,500 PSI.
 BREAK CIRCULATION ON WELL WITH 51 BBLS WATER. PUMPED 60 BBLS WATER.
MIX & PUMP 26 SACKS (6.3 BBLS) OF "TYPE III" CEMENT AT 14.8 PPG WITH 1.37 FT3 YIELD.
 DISPLACED CEMENT WITH 14.0 BBLS OF WATER. PULL TUBING TO 3,610'.
 REVERSED OUT WITH 20 BBLS WATER.
 SHUT IN WELL AND PRESSURED UP TO 200 PSI. SQUEEZE 1 BBL.
 PUMP RATE MIN: 1.0 BPM.
 PUMP RATE MAX: 2.5 BPM.
 PUMP PSI MIN: 50 PSI.
 PUMP PSI MAX: 200 PSI.
 BBLS SLURRY INSIDE 4 1/2" CASING: 6.3 BBLS.
 RIG DOWN, RELEASED CEMENT EQUIPMENT & CREW.



Well Operations Summary L48

Well Name: LIVELY #12

API: 3004521199

Field: BASIN DAKOTA (PRORATED GAS)

State: NEW MEXICO

Sundry #:

Rig/Service: DWS 34

Operation

SHUT IN, SECURED WELL. WINTERIZED & SECURED RIG AND ALL EQUIPMENT. SHUTDOWN JOB OPERATIONS FOR THE EVENING.
CREW TRAVEL TO YARD.

Report Number
9

Report Start Date
3/13/2024

Report End Date
3/13/2024

Operation

NO JOB OPERATIONS, GAVE CEMENT ADDITIONAL CURING TIME.

Report Number
10

Report Start Date
3/14/2024

Report End Date
3/14/2024

Operation

CREW TRAVEL TO WELLSITE. CREW ON HILCORP YARD AT 0500 HOURS. LEASE ROADS VERY MUDDY FROM OVERNIGHT STORMS.
PJSA WITH CREW. SERVICE, START AND WARM UP SERVICE RIG & PUMP.
CHECK WELL PRESSURES, SITP-0 PSI, SICP-0 PSI, SIIICP- 0 PSI, SIBHP- 0 PSI.
OPEN WELL. SLIGHT VACUUM ON WELL.
CONTINUE TRIP OUT OF WELL WITH CEMENTING BHA/TUBING.

MAKE UP CEMENT DRILLOUT ASSEMBLY:

1- 3.875" O.D. X .30' ROLLER BIT.
1- 3.75" O.D. X 2.00' BIT SUB.
1- 3.00" O.D. X 30.01' DRILL COLLAR (20 LBS/FT).
1- 3.00" O.D. X 30.53' DRILL COLLAR (20 LBS/FT).
1- 3.00" O.D. X 30.81' DRILL COLLAR (20 LBS/FT).
1- 3.00" O.D. X 29.98' DRILL COLLAR (20 LBS/FT).
1- 3.00" O.D. X 30.25' DRILL COLLAR (20 LBS/FT).
1- 3.00" O.D. X 30.27' DRILL COLLAR (20 LBS/FT).
1- 3.0625" O.D. X 1.50' TUBING CROSSOVER.

TRIP INTO WELL WITH 2 3/8" TUBING/BIT BHA. TAGGED **CEMENT AT 3,758'**.

RIG UP POWER SWIVEL ASSEMBLY. PREPARE TO BEGIN DRILLING OUT CEMENT FROM SQUEEZE JOB.

BREAK CIRCULATION WITH 5.0 BBLs OF RIG PIT WATER, BEGIN DRILLING OUT CEMENT.

DRILLED FROM 3,758' TO 3,976'. (CHACRA PERFS: 3,344'-4,066'), CIRCULATE UNTIL RETURNS WERE CLEAN.

SHUTDOWN CIRCULATION. HANG BACK POWER SWIVEL INTO DERRICK. LAYDOWN 1 TUBING JOINT.

SHUT IN, SECURED WELL. WINTERIZED & SECURED RIG AND ALL EQUIPMENT. SHUTDOWN JOB OPERATIONS FOR THE NIGHT.

CREW TRAVEL TO YARD.

Report Number
11

Report Start Date
3/15/2024

Report End Date
3/15/2024

Operation

CREW TRAVEL TO WELLSITE. CREW ON HILCORP YARD AT 0500 HOURS. LEASE ROADS VERY MUDDY FROM OVERNIGHT RAIN/SNOW STORM.
PJSA WITH CREW. SERVICE, START AND WARM UP SERVICE RIG & PUMP.
CHECK WELL PRESSURES, SITP-0 PSI, SICP-0 PSI, SIIICP- 0 PSI, SIBHP- 0 PSI.
OPEN WELL. SLIGHT VACUUM ON WELL.

PICK UP 1 TUBING JOINT, RIG UP POWER SWIVEL ASSEMBLY. PREPARE TO CONTINUE DRILLING OUT CEMENT FROM SQUEEZE JOB.
BREAK CIRCULATION WITH 2.0 BBLs OF RIG PIT WATER, BEGIN DRILLING OUT CEMENT.

DRILLED FROM 3,976' TO 4,108'. WENT THRU CEMENT AT THIS DEPTH. CIRCULATED UNTIL RETURNS WERE CLEAN.

ATTEMPT TO PRESSURE TEST 4 1/2" CASING TO 600 PSI. LOSING 25 PSI/MINUTE. RETRY WITH THE SAME RESULTS.
CALL HEC ENGINEERING. WILL RUN IN WITH PACKER TO TEST WELLHEAD & SQUEEZE PERFS.

WAIT ON TOOLS/PACKER & SERVICEMAN.

MAKE UP 4 1/2" AS1-X PACKER TO 2 3/8" DRILLING TUBING AS TAILPIPE. SET PACKER AT 32'.
LOAD & ATTEMPT TO TEST THE 4 1/2" CASING AND WELLHEAD ABOVE THE PACKER TO 600 PSI. LEAKING OFF AT 10 PSI/MINUTE. RETRY TEST WITH THE SAME RESULTS.
ATTEMPT TO TEST THE 4 1/2" CASING/CHACRA SQUEEZE PERFS BELOW THE PACKER TO 600 PSI, LEAKING OFF AT 25 PSI/MINUTE. RETRY TEST WITH THE SAME RESULTS.
CALL HEC ENGINEERING WITH TESTING RESULTS.
PLANS FORWARD: CHANGE OUT 2K WELLHEAD ASSEMBLY AND NIPPLE UP 3K WELLHEAD. TEST ABOVE AND BELOW CHACRA PERFS WITH PACKER. EVALUATE RESULTS.

UNSET PACKER AND TRIP OUT WITH 2 3/8" TUBING/DRILLING ASSEMBLY. STAND BACK COLLARS INTO THE DERRICK.

SHUT IN, SECURED WELL. WINTERIZED & SECURED RIG AND ALL EQUIPMENT. SHUTDOWN JOB OPERATIONS FOR THE WEEKEND.

CREW TRAVEL TO YARD.

Report Number
12

Report Start Date
3/18/2024

Report End Date
3/18/2024

Operation

NO JOB OPERATIONS, GAVE LEASE ROADS TIME TO DRY OUT. ROAD GRADER WORKED ON SEVERAL AREAS.

Report Number
13

Report Start Date
3/19/2024

Report End Date
3/19/2024

Operation

CREW TRAVEL TO WELLSITE. CREW ON HILCORP YARD AT 0500 HOURS. LEASE ROADS MUDDY.



Well Operations Summary L48

Well Name: LIVELY #12

API: 3004521199

Field: BASIN DAKOTA (PRORATED GAS)

State: NEW MEXICO

Sundry #:

Rig/Service: DWS 34

Operation

PJSA WITH CREW. SERVICE, START AND WARM UP SERVICE RIG & PUMP.

CHECK WELL PRESSURES. SICP-0 PSI. SIIICP- 0 PSI. SIBHP- 0 PSI. OPEN WELL. SLIGHT VACUUM ON WELL.

RIG DOWN FLOOR & TUBING TOOLS. NIPPLE DOWN BOP ASSEMBLY. NIPPLE DOWN TUBING HEAD. CUT, WELD & DRESS UP 4 1/2" CASING STUB. INSTALL NEW TUBING HEAD ASSEMBLY. TEST VOID SEALS TO 1,750 PSI. TESTED GOOD. RIG DOWN RELEASED BIG RED & CF&M SERVICES. NIPPLE UP BOP ASSEMBLY & FUNCTION TEST. TESTED GOOD. RIG UP FLOOR & TUBING TOOLS.

MAKE UP 4 1/2" AS1-X PACKER. TRIP IN WITH 2 3/8" TUBING. CIRCULATE WELL WITH 10 BBLs OF WATER. SET PACKER AT 3,123'. LOAD & TEST THE 4 1/2" CASING AND WELLHEAD ABOVE THE PACKER TO 600 PSI FOR 30 MINUTES. TEST WAS GOOD.

UNSET PACKER AND TRIP DOWN TO 4,115'. ATTEMPT TO TEST THE 4 1/2" CASING BELOW THE PACKER TO 600 PSI. LEAKING OFF AT 10 PSI/MINUTE. RETRY TEST WITH THE SAME RESULTS.

UNSET PACKER AND TRIP DOWN TO 4,178'. SET PACKER AND ATTEMPT TO TEST THE 4 1/2" CASING BELOW THE PACKER TO 600 PSI. LEAKING OFF AT 10 PSI/MINUTE. RETRY TEST WITH THE SAME RESULTS.

UNSET PACKER AND TRIP DOWN TO 6,915' AND TAGGED CEMENT FILL (CIBP AT 6,989').

RIG UP TO TUBING AND CIRCULATE WELL WITH 110 BBLs OF FRESH WATER.

SET PACKER AND ATTEMPT TO TEST THE 4 1/2" CASING BELOW THE PACKER TO 600 PSI. STARTED GAINING PRESSURE DUE TO WATER HEATING. BLEED OFF PRESSURE. UNSET PACKER AND TRIP OUT TO 6,240'.

SHUT IN, SECURED WELL. WINTERIZED & SECURED RIG AND ALL EQUIPMENT. SHUTDOWN JOB OPERATIONS FOR THE NIGHT.

CREW TRAVEL TO YARD.

Report Number
14Report Start Date
3/20/2024Report End Date
3/20/2024

Operation

CREW TRAVEL TO WELLSITE.

PJSA WITH CREW. SERVICE, START AND WARM UP SERVICE RIG & PUMP.

CHECK WELL PRESSURES. SITP-0 SPI. SICP-0 PSI. SIIICP- 0 PSI. SIBHP- 0 PSI. OPEN WELL. VERY SLIGHT VACUUM ON WELL.

MOVE IN, RIG UP M & R TRUCKING HYDRO-VAC UNIT TO CLEAN OUT RIG PIT. SPOT IN CNJ TRUCKING WATER TRUCK FOR PRESSURE TESTING OPERATION.

CIRCULATE WELL WITH 5 BBLs OF WATER. SET PACKER AT 6,240'. LOAD & TEST THE 4 1/2" CASING AND CIBP BELOW THE PACKER TO 600 PSI FOR 35 MINUTES. LOST 10 PSI. TEST LEVELED OFF IN THE LAST 10 MINUTES. TEST WAS GOOD.

UNSET PACKER AND TRIP UP TO 5,615'. TEST THE 4 1/2" CASING BELOW THE PACKER TO 640 PSI. LEAKING OFF AT 2 PSI/MINUTE. LEVELED OFF DURING LAST 10 MINUTES. TEST WAS GOOD.

UNSET PACKER AND TRIP UP TO 4,989'. SET PACKER AND ATTEMPT TO TEST THE 4 1/2" CASING BELOW THE PACKER TO 635 PSI. LEAKING OFF AT 8 PSI/MINUTE. RETRY TEST WITH THE SAME RESULTS. NO TEST.

UNSET PACKER AND TRIP OUT OF WELL TO INSPECT PACKER.

TRIP OUT WITH PACKER. ALL THE PACKER RUBBERS WERE INTACT WITH NO APPARENT DAMAGE. MADE UP 2 3/8" SEAT NIPPLE ONTO 2ND AS1-X PACKER.

TRIP BACK IN WITH PACKER TO 4,364'.

SET PKR AT 4,364'. ATTEMPT TEST TO 590 PSI. LEAK OFF AT 5 PSI/MINUTE. RETRY WITH THE SAME RESULTS.

UNSET PKR & TRIP DOWN TO 4,989'. TEST TO 610 PSI FOR 30 MINUTES. TEST WAS GOOD.

UNSET PKR & PULL TO 4,706'. ATTEMPT TO TEST TO 590 PSI. LEAK OFF AT 1 PSI/MINUTE. RETRY WITH SAME RESULTS.

UNSET PKR & TRIP DOWN TO 4,801'. TEST TO 585 PSI FOR 30 MINUTES. LOST 10 PSI. LEVELED OFF IN LAST 10 MINUTES. UNSET PKR & TRIP OUT TO 4,177'.

SHUT IN, SECURED WELL. WINTERIZED & SECURED RIG AND ALL EQUIPMENT. SHUTDOWN JOB OPERATIONS FOR THE NIGHT.

CREW TRAVEL TO YARD.

Report Number
15Report Start Date
3/21/2024Report End Date
3/21/2024

Operation

CREW TRAVEL TO WELLSITE. CREW ON HILCORP YARD AT 0500 HOURS.

PJSA WITH CREWS. SERVICE, START AND WARM UP SERVICE RIG & RIG PUMP.

CHECK WELL PRESSURES. SITP-0 SPI. SICP-0 PSI. SIIICP-0 PSI. SIBHP- 0 PSI. OPEN WELL. VERY SLIGHT VACUUM ON WELL.

CONTINUE TRIP OUT OF WELL WITH AS1-X PACKER.

MAKE UP 4 1/2" RETRIEVABLE BRIDGE PLUG WITH 4 1/2" AS1-X PACKER. TRIP INTO WELL WITH TOOLS.

SET RBP AT 4,403'. PULL OFF RBP AND SET PKR AT 4,371'. TEST BETWEEN RBP AND PKR TO 610 PSI. TEST GOOD.

RELEASED PKR, PULL UP AND RESET PKR AT 4,085'. TEST BETWEEN PKR AND RBP TO 620 PSI FOR 40 MINUTES. LEAK OFF AT 1/2 PSI/MINUTE. LEVELED OFF IN LAST 10 MINUTES. TEST WAS GOOD.

UNSET PKR & TRIP DOWN TO RBP AT 4,403'. UNSET RBP.



Well Operations Summary L48

Well Name: LIVELY #12

API: 3004521199

Field: BASIN DAKOTA (PRORATED GAS)

State: NEW MEXICO

Sundry #:

Rig/Service: DWS 34

Operation

TRIP OUT OF WELL WITH TOOLS.

LUNCH/WATER BREAK.

MOVE IN, RIG UP BASIN WIRELINE UNIT & LOGGING TOOLS. TOP OFF WELL WITH 7 BBLs WATER.

RUN GR/CBL/CCL FROM 6,898' WLM TO SURFACE. CEMENT EVALUATION TO BE DETERMINED BY HEC ENGINEERING GROUP.

SEND RESULTS TO HEC ENGINEERING. RIG DOWN, RELEASED BASIN WIRELINE UNIT & TOOLS.

MAKE UP 4 1/2" RETRIEVABLE BRIDGE PLUG WITH 4 1/2" AS1-X PACKER. TRIP INTO WELL WITH TOOLS.

TRIPPED TO 4,980'.

SHUT IN, SECURED WELL. WINTERIZED & SECURED RIG AND ALL EQUIPMENT. SHUTDOWN JOB OPERATIONS FOR THE NIGHT.

CREW TRAVEL TO YARD.

Report Number

16

Report Start Date

3/22/2024

Report End Date

3/22/2024

Operation

CREW TRAVEL TO WELLSITE. CREW ON HILCORP YARD AT 0500 HOURS.

PJSA WITH CREWS. SERVICE, START AND WARM UP SERVICE RIG & RIG PUMP.

CHECK WELL PRESSURES. SITP-0 PSI. SICP-0 PSI. SIIICP-0 PSI. SIBHP- 0 PSI. OPEN WELL.

SET PACKER AT 4,989'. LOAD TUBING.

MOVE IN, RIG UP WELLCHECK SERVICES. PRESSURE TEST UNIT, TEST GOOD. PERFORM PRELIMINARY TEST ON 4 1/2" CASING BELOW PACKER TO CIBP. TEST WAS GOOD.

WAIT ON NM OCD INSPECTOR TO ARRIVE.

CONDUCTED 3 MITS ON WELL. ALSO CONDUCTED BRADENHEAD TEST.

1ST TEST: PKR AT 4,989'. TEST 4 1/2" CSG & CIBP BELOW PACKER TO 580 PSI FOR 30 MINUTES. TEST GOOD.**2ND TEST: SET RBP AT 4,403', PULL PKR TO 4,085'. TEST 4 1/2" CSG BETWEEN RBP & PKR TO 560 PSI FOR 30 MINUTES. TEST WAS GOOD.****3RD TEST: PULL PKR TO 3,303'. TEST 4 1/2" CSG ABOVE PKR TO SURFACE TO 560 PSI FOR 30 MINUTES. TEST GOOD.****WITNESSED BY ANTHONY BUNNY OF NMOCD.**

RELEASED PRESSURE, RIG DOWN WELLCHECK SERVICES. NOTIFY HEC ENGINEERING OF TEST RESULTS.

TRIP OUT OF WELL WITH RBP & PKR ASSEMBLY. STAND BACK TUBING INTO THE DERRICK.

SHUT IN, SECURED WELL. WINTERIZED & SECURED RIG AND ALL EQUIPMENT. SHUTDOWN JOB OPERATIONS FOR THE WEEKEND.

CREW TRAVEL TO YARD.

Report Number

17

Report Start Date

3/25/2024

Report End Date

3/25/2024

Operation

NO JOB OPERATIONS. WAIT ON ORDERS.

Report Number

18

Report Start Date

3/26/2024

Report End Date

3/26/2024

Operation

CREW TRAVEL TO WELLSITE. CREW ON HILCORP YARD AT 0500 HOURS.

PJSA WITH CREW. SERVICE, START AND WARM UP SERVICE RIG.

CHECK WELL PRESSURES. SICP-0 PSI. SIIICP-0 PSI. SIBHP- 0 PSI. OPEN WELL. NO PRESSURE TO BLOWDOWN.

TRIP IN WITH 3" DRILL COLLARS FROM THE DERRICK. TRIP OUT LAYING DOWN ONTO HOT SHOT FLOAT.

TRIP INTO WELL WITH 2 3/8" WELL TUBING FROM THE DERRICK. TRIP OUT LAYING DOWN ONTO FLOAT.

WILL SEND IN 240 JOINTS OF 2 3/8" 4.7# J-55 WELL TUBING TO TUBOSCOPE FOR STORAGE.

(100- JOINTS WHITE BAND, 140- JOINTS YELLOW BAND).

MOVE IN, RIG UP BASIN WIRELINE UNIT & PERFORATING TOOLS.

MAKE UP AND RUN IN SET SELECT 4 1/2" **COMPOSITE BRIDGE PLUG @ 6,536' WLM.**

CORRELATED OFF OF CORRECTED GR/CCL/CBL LOG DATED 3-21-24.

PERFORATE PART OF THE 1ST STAGE MANCOS INTERVAL (6,371'-6,445') WITH 62- .37" DIA. PERFORATIONS. CORRELATED OFF OF CORRECTED GR/CCL/CBL DATED 3-21-24.

PERFORATING GUNS: OWEN 3 1/8" HSC, .37" DIAMETER PERFS, 90 DEGREE PHASE, 35" PENETRATION, 23.0 GRAM CHARGES. MADE 2 GUN RUNS. ALL PERFORATIONS WERE SHOT.

RIG DOWN BASIN TOOLS OFF WELLHEAD.

SHUT IN, SECURED WELL. WINTERIZED & SECURED RIG AND ALL EQUIPMENT. SHUTDOWN JOB OPERATIONS FOR THE NIGHT.

CREW TRAVEL TO YARD.

Report Number


19


Report Start Date

3/27/2024

Report End Date

3/27/2024

<div><div><div>Hilcorp Energy Company</div></div><div>Well Operations Summary L48</div></div>		
Well Name: LIVELY #12		
API: 3004521199	Field: BASIN DAKOTA (PRORATED GAS)	State: NEW MEXICO
	Sundry #:	Rig/Service: DWS 34
Operation		
CREW TRAVEL TO WELLSITE. CREW ON HILCORP YARD AT 0500 HOURS.		
PJSA WITH CREWS. SERVICE, START AND WARM UP SERVICE RIG & WIRELINE UNIT.		
CHECK WELL PRESSURES. SICP-0 PSI. SIIICP-0 PSI. SIBHP- 0 PSI. OPEN WELL. NO PRESSURE TO BLOWDOWN. SLIGHT VACUUM.		
RIG UP BASIN PERFORATING TOOLS. PERFORATE REMAINDER OF THE 1ST STAGE MANCOS INTERVAL (6,171'-6,356') WITH 62- .37" DIA. PERFORATIONS. CORRELATED OFF OF CORRECTED GR/CCL/CBL DATED 3-21-24. PERFORATING GUNS: OWEN 3 1/8" HSC, .37" DIAMETER PERFS, 90 DEGREE PHASE, 35" PENETRATION, 23.0 GRAM CHARGES. MADE 2 GUN RUNS. ALL PERFORATIONS WERE SHOT. MAKE UP AND RIH WITH HILCORP 4 1/2" PUMP THRU FRAC PLUG, SET @ 5,390' WLM. CORRELATED OFF OF CORRECTED GR/CCL/CBL LOG DATED 3-21-24. MAKE UP & RUN IN WITH 4 1/2" TARGET MODEL "D" FRAC PACKER WITH 6.11' X 2 7/8" PUP JOINT AND DUAL DISC SUB. SET PACKER ASSEMBLY AT 4,370' WLM. CORRELATE OFF OF CORRECTED GR/CBL/CCL LOG DATED 3-21-2024. RIG DOWN, MOVE OUT BASIN WIRELINE.		
MOVE IN, SPOT FRAC STRING FLOAT. MOVE OUT WELL TUBING FLOAT. RECEIVED 162 JOINTS (5,003.21') OF HILCORP 2 7/8" 6.5# P-110 RTS-8 I.J. TUBING FROM TUBOSCOPE YARD. SEND IN 240 JOINTS OF 2 3/8" 4.7# J-55 WELL TUBING FOR STORAGE AT TUBOSCOPE YARD UNTIL NEEDED FOR AFTER FRAC RECOMPLETION OPERATIONS. (100- JOINTS WHITE BAND & 140- JOINTS OF YELLOW BAND).		
MOVE IN, RIG UP WELL CHECK SERVICES HYDRO TESTING UNIT & TOOLS. MAKE UP MODEL "D" PACKER SEAL ASSEMBLY. TALLY, RABBIT, TRIP AND HYDRO TEST IN WITH 2 7/8" RTS-8 FRAC STRING. TRIPPED TO 1,576'. (TESTED TO 8,000 PSI.)		
SHUT IN, SECURED WELL. WINTERIZED & SECURED RIG AND ALL EQUIPMENT. SHUTDOWN JOB OPERATIONS FOR THE NIGHT.		
CREW TRAVEL TO YARD.		
Report Number 20	Report Start Date 3/28/2024	Report End Date 3/28/2024
Operation		
CREW TRAVEL TO WELLSITE. CREW ON HILCORP YARD AT 0500 HOURS.		
PJSA WITH CREWS. SERVICE, START AND WARM UP SERVICE RIG & HYDRO TESTING UNIT.		
CHECK WELL PRESSURES. SITP-0 PSI. SICP-0 PSI. SIIICP-0 PSI. SIBHP- 0 PSI. OPEN WELL. NO PRESSURE TO BLOWDOWN.		
CONTINUE TO TALLY, RABBIT, TRIP AND HYDRO TEST IN WITH 2 7/8" RTS-8 FRAC STRING. TAG FRAC PACKER AND SPACE OUT WITH PUP JOINTS. INSTALL FRAC TUBING HANGER AND LAND INTO FRAC PACKER WITH 12K COMPRESSION. FRAC TUBING ASSEMBLY: 1- 7 1/16" X 2 7/8" 3K TBG HANGER (.50'). 1- 2 7/8" L-80 PUP JOINT (9.72'). 1- 2 7/8" L-80 PUP JOINT (4.08'). 1- 2 7/8" L-80 PUP JOINT (1.05'). 1- 2 7/8" EUE X 2 7/8" RTS-8 CROSSOVER (1.32'). 141- 2 7/8" P-110 RTS-8 TUBING JOINTS (4,309.59'). 1- 3 1/4" P-110 RTS-8 MARKER PUP JOINT (2.0') 1- 2 7/8" P-110 RTS-8 TUBING JOINT (30.48') 1- 2 7/8" RTS-8 X 2 7/8" EUE CROSSOVER (1.25'). 1- 2 7/8" LATCH TYPE SEAL ASSEMBLY (1.74'). K.B.- 12' DUAL DISC SUB- 4,383.23'. ANCHOR LATCH SEAL ASSEMBLY- 4,372.67'. HILCORP PUMP THRU FRAC PLUG- 5,390'.		
MOVE IN BIG RED & WELLCHECK. RIG DOWN FLOOR AND TUBING TOOLS. NIPPLE DOWN BOP ASSEMBLY. NIPPLE UP 10K FRAC STACK ASSEMBLY. TEST VOID SEALS. TEST GOOD. TEST 2 7/8" FRAC STRING & 10K FRAC STACK ASSEMBLY TO 8,000 PSI FOR 30 MINUTES. TEST GOOD. RIG DOWN BIG RED & WELLCHECK.		
MOVE IN, RIG UP EXPERT SLICKLINE SERVICES. 1ST RUN: 2.25" O.D. SPEAR TO 4,375' SLM. BREAK DISC WITH 11 HITS. TBG WENT ON VACUUM. CONTINUE DOWN TO 4,500' SLM. NO OBSTRUCTION SEEN. RIG DOWN, RELEASE EXPERT.		
SHUT IN, SECURED WELL. SECURED RIG AND ALL EQUIPMENT. SHUTDOWN OPERATIONS FOR THE NIGHT. WILL RIG DOWN SERVICE UNIT & EQUIPMENT IN THE MORNING TO PREPARE FOR RIG MOVE TO THE S.J. 28-7 #132 WELLSITE.		
CREW TRAVEL TO YARD.		
Report Number 21	Report Start Date 3/29/2024	Report End Date 3/29/2024
www.peloton.com		
Page 7/13		
Report Printed: 5/13/2024		

<div><div>Hilcorp Energy Company</div><div>Well Operations Summary L48</div></div>		
Well Name: LIVELY #12		
<div><div>API: 3004521199</div><div>Field: BASIN DAKOTA (PRORATED GAS)</div><div>State: NEW MEXICO</div><div>Sundry #:</div><div>Rig/Service: DWS 34</div></div>		
Operation		
CREW TRAVEL TO WELLSITE. CREW ON HILCORP YARD AT 0500 HOURS.		
PJSA WITH CREWS.		
RIG DOWN SERVICE UNIT. LOAD UP AND MOBILIZE RIG & ALL EQUIPMENT TO THE S.J. 28-7 #132 FOR FRAC PREP OPERATIONS.		
Report Number 22	Report Start Date 4/8/2024	Report End Date 4/8/2024
Operation		
SPOT IN AND RIG UP FRAC AND WIRELINE CREWS FROM STAGING AREA. PRIME, COOL DOWN, TEST, SAFETY MEETING. PUT 200 PSI ON FRAC STRING ANNULUS. LOAD BALL GUN.		
FRAC STAGE 1: BROKE DOWN WELL WITH WATER AND 1000 GAL 15% HCL. FOAM FRAC'D MANCOS WITH 200,190 LBS 20/40 ARIZONA AND 110,502 GAL SLICKWATER AND 4.17 MILLION SCF N2. 60 QUALITY. AVG RATE = 44 BPM, AVG PSI = 5259. ISIP WAS 1549 PSI. PUMPED TWO 100,000 LB SAND RAMPS AND DROPPED 60 7/8" RCN BALLS IN BETWEEN RAMPS.		
DROP BALL ON FRAC BAFFLE. CHECK FOR BALL ACTION (SAW BALL ACTION AFTER PUMPING 54 BBLS, 13 BBLS OVER). RIH WITH 2" GUN AND TAGGED UP AT 4760', UP/DOWN SEVERAL TIMES AND TAGGING UP AT 4750'. POOH. PUMPED ANOTHER 54 BBLS (5 BPM @ 1750 PSI). RIH WITH 2" GUN AND TAGGED UP AT 4738', POOH. PUMPED ANOTHER 100 BBLS OF SLICKWATER (19 BPM @ 2150 PSI). RIH WITH 2" GUN AND TAGGED UP AT 4724', POOH.		
SHUT IN WELL AND RIG DOWN CREWS.		
Report Number 23	Report Start Date 4/10/2024	Report End Date 4/11/2024
Operation		
TRAVEL TO S.J. 28-7 #132 WELLSITE.		
PJSA WITH CREWS.		
START RIG MOVE OPERATIONS. MOBILIZED HEC RIG EQUIPMENT FROM THE S.J. 28-7 #132 TO THE LIVELY #12 WELLSITE (9.5 MILE MOVE). LEASE ROADS ROUGH. MOVE IN ALL EQUIPMENT. RIG UP SERVICE UNIT ONTO BASE BEAM.		
MOVE IN BIG RED SERVICES. RIG UP LINE OFF FRAC STACK/WELLHEAD TO BLEED PRESSURE. INSTALLED ADJUSTABLE CHOKE INTO LINE.		
CHECK WELL PRESSURES. SITP-2,200 PSI. SICP-0 PSI. SIICP-0 PSI. SIBHP- 0 PSI.		
BEGIN BLEED DOWN OPERATION: 10:45: OPEN WELL ON 18/64" CHOKE AT 2,200 PSI. MAKING N2 GAS. 11:30: 18/64" CHOKE AT 750 PSI. WELL START FLOWING FOAM FLUID & N2 GAS. 12:30: 18/64" CHOKE AT 1,300 PSI. FLOWING FOAM FLUID & N2 GAS, NO SAND. 13:30: 18/64" CHOKE AT 1,400 PSI. FLOWING FOAM FLUID & N2 GAS, NO SAND, MADE 10 BBLS/HR. 14:00: 20/64" CHOKE AT 1,350 PSI. FOAM FLUID, N2 GAS AND NO SAND. 15:00: 22/64" CHOKE AT 1,300 PSI. FOAM FLUID, N2 GAS AND NO SAND. 16:00: 22/64" CHOKE AT 1,350 PSI. FOAM FLUID, N2 GAS AND NO SAND. 80 BBLS WATER MADE. 16:30: SHUT IN WELL. RIG DOWN BIG RED BLEED DOWN IRON. PJSA WITH IDEAL SERVICES. RIG UP IDEAL SERVICES BLEED DOWN IRON. CONTINUE BLEED DOWN OPERATIONS. WINTERIZE & SECURE RIG. 17:30: OPEN WELL ON 16/64" CHOKE AT 1,450 PSI.		
CONTINUE BLEED DOWN OPERATION: 19:00: 20/64" CHOKE AT 1,000 PSI. FLOWING FOAM FLUID & N2 GAS. 20:00: 24/64" CHOKE AT 950 PSI. FLOWING FOAM FLUID & N2 GAS. 21:00: 28/64" CHOKE AT 800 PSI. FLOWING FOAM FLUID & N2 GAS, NO SAND. 22:00: 30/64" CHOKE AT 600 PSI. FLOWING FOAM FLUID & N2 GAS, NO SAND. 23:00: 34/64" CHOKE AT 500 PSI. FOAM FLUID, N2 GAS AND NO SAND. 24:00: 38/64" CHOKE AT 400 PSI. FOAM FLUID, N2 GAS AND NO SAND. 01:00: 44/64" CHOKE AT 220 PSI. FOAM FLUID, N2 GAS AND NO SAND. 02:00: 48/64" CHOKE AT 160 PSI. FOAM FLUID, N2 GAS AND NO SAND. SHUT IN WELL. TANK FULL AT 400 BBLS. CONTINUE TO MONITOR PRESSURES.		
Report Number 24	Report Start Date 4/11/2024	Report End Date 4/11/2024
Operation		
CONTINUE TO MONITOR PRESSURE. 03:00: SITP- 200 PSI. 04:00: SITP- 640 PSI. 05:00: SITP- 900 PSI.		
CREW TRAVEL TO WELLSITE. CREW ON HILCORP YARD AT 0500 HOURS.		
PJSA WITH CREWS.		
MOVE IN WATER TRUCK, START UNLOADING TANK. CONTINUE BLEED DOWN OPERATION. 08:00: 20/64" CHOKE AT 1,100 PSI. FLOWING FOAM FLUID & N2 GAS. 09:00: 48/64" CHOKE AT 140 PSI. FLOWING FOAM FLUID & N2 GAS. MOVE IN, UP BIG RED TOOLS WITH 2-WAY CHECK. SHUT IN WELL. TUBING PRESSURE BUILD TO 250 PSI.		
KILL TUBING PRESSURE WITH 20 BBLS 2% KCL WATER. LUBRICATE IN 2-WAY CHECK INTO FRAC HANGER. TUBING PRESSURE AT 0 PSI. NIPPLE DOWN FRAC STACK ASSEMBLY. NIPPLE UP BOP ASSEMBLY. LAY OUT FLOW LINE.		
WAIT ON WELLCHECK TEST UNIT. STUCK IN WASH ENROUTE TO WELLSITE.		
www.peloton.com		
Page 8/13		
Report Printed: 5/13/2024		



Well Operations Summary L48

Well Name: LIVELY #12

API: 3004521199

Field: BASIN DAKOTA (PRORATED GAS)

State: NEW MEXICO

Sundry #:

Rig/Service: DWS 34

Operation

MOVE IN WELLCHECK SERVICES FOR BOP TEST.
PRESSURE TEST BOP. TESTED BLIND RAMS TO 250 PSI LOW AND 2,500 PSI HIGH (GOOD). TESTED 2 7/8" PIPE RAMS TO 250 PSI LOW AND 2,500 PSI HIGH (GOOD). HAD TO FIX SEVERAL LEAKS.
CHARTED BY WELLCHECK SERVICES.

UNSET 2 7/8" FRAC TUBING FROM MODEL "D" FRAC PACKER. PULL TO RIG FLOOR. LUBRICATE 2-WAY CHECK OUT OF HANGER. KILL TUBING WITH 20 BBLS 2% KCL WATER.
LAYDOWN FRAC HANGER. RIG DOWN, RELEASED WELLCHECK SERVICES.

INSTALL STRIPPING RUBBER. START TRIP OUT OF WELL WITH 2 7/8" FRAC STRING. STAND BACK INTO THE DERRICK. TRIPPED TO 2,170'.
INSTALLED 8' - 2 7/8" EUE PUP JOINT JUST BELOW PIPE RAMS. PULL COUPLING TO JUST BELOW PIPE RAMS.

SHUT IN, SECURED WELL. WINTERIZED RIG PUMP, SECURED RIG AND ALL EQUIPMENT. SHUTDOWN JOB OPERATIONS FOR THE EVENING.
CREW TRAVEL TO YARD.

Report Number
25Report Start Date
4/12/2024Report End Date
4/12/2024

Operation

CREW TRAVEL TO WELLSITE. CREW ON HILCORP YARD AT 0500 HOURS.

PJSA WITH CREWS.

CHECK WELL PRESSURES. SITP-1,300 PSI. SICP-1,300 PSI. SIIICP-0 PSI. SIBHP- 0 PSI. OPEN WELL TO TANK. FLOWING BACK WATER AND N2 GAS.

KILL CASING WITH 15 BBLS 2% KCL WATER.

CONTINUE OUT OF WELL WITH 2 7/8" FRAC STRING. STAND BACK 142- JOINTS OF FRAC STRING INTO THE DERRICK.

MAKE UP PACKER MILLING ASSEMBLY:

1- 3.875" O.D. (3.25" I.D.) X 4.53' MILLING SHOE (4.53').
1- 3.75" O.D. (1.0" I.D.) X 1.51' CANFIELD BUSHING (1.51').
1- 3.1875" O.D. (1.0" I.D.) X 8.45' HYDRAULIC JARS (8.45').
6- 3.125" O.D. (26 LBS/FT) DRILL COLLARS (OVERALL LENGTH-186.12').
1- 3.0625" O.D. (1.0625" I.D.) 2 3/8" I.F. X 2 3/8" EUE CROSSOVER (.50').
2 3/8" 4.7# J-55 WORK STRING TUBING.

START TALLY & TRIP IN WITH 2 3/8" WORK STRING & MILLING ASSEMBLY. TRIPPED TO 2,850'. WILL UNLOAD WELL.

RIG UP AIR UNIT TO TUBING. TEST LINES TO 1,600 PSI.

START AIR UNIT AT 1,200 CFM AT 1,000 TO 900 PSI WITHOUT MIST. WELL UNLOADED 40 BBLS OF WATER TO TANK.

SHUTDOWN AIR UNIT. CONTINUE TALLY AND TRIP INTO WELL. TAG FRAC PACKER AT 4,370'.

RIG UP POWER SWIVEL ASSEMBLY. PREPARE TO BEGIN MILLING OUT SLIPS ON FRAC PACKER.

START AIR UNIT AT 1,200 CFM AT 900 TO 1,100 PSI WITH MIST AT 15 BPH. BEGIN MILLING ON FRAC PACKER. MILLED 6" IN 1 HOUR, STARTED LOSING SOME TORQUE, POSSIBLY SPINNING PACKER TOP OR MAYBE BREAK SLIPS OF FRAC PACKER. CONTINUED MILLING MADE ADDITIONAL 1 1/2'. MAKING SMALL METAL PIECES, SHAVINGS AND SOME FRAC SAND. CIRCULATED UNTIL RETURNS WERE CLEANER.
USED 60 BBLS WATER FOR MIST.

1 - 3 GAL PER 10 BBLS: CL-299 (CORROSION INHIBITOR).

1 - 1 1/2 GAL PER 10 BBLS: F-86 (FOAMER).

SHUTDOWN AIR MIST. RIG DOWN & HANG BACK POWER SWIVEL ASSEMBLY. LAYDOWN 4- JOINTS OF TUBING. MILLING ASSEMBLY AT 4,246'.

SHUT IN, SECURED WELL. WINTERIZED RIG PUMP & AIR UNIT. SECURED RIG AND ALL EQUIPMENT. SHUTDOWN JOB OPERATIONS FOR THE WEEKEND.

CREW TRAVEL TO YARD.

Report Number

26

Report Start Date

4/15/2024

Report End Date

4/15/2024

Operation

CREW TRAVEL TO WELLSITE. CREW ON HILCORP YARD AT 0500 HOURS.

PJSA WITH CREWS.

CHECK WELL PRESSURES. SITP-0 PSI (STRING FLOAT). SICP-1,050 PSI. SIIICP-0 PSI. SIBHP- 0 PSI. OPEN WELL TO TANK. FLOWING BACK MIST/WATER AND N2 GAS.

PICK UP AND RUN IN WITH 4 JOINTS OF TUBING. RIG UP POWER SWIVEL ASSEMBLY.

RIG UP POWER SWIVEL ASSEMBLY.

START AIR UNIT AT 1,200 CFM AT 900 TO 1,100 PSI WITH MIST AT 15 BPH. CONTINUE MILLING ON FRAC PACKER. MADE ADDITIONAL 2'. MAKING SMALL METAL PIECES & LIGHT SAND. STARTED GETTING SMALL RUBBER PIECES. WENT THRU PACKER. TOTAL OF 6 HOURS TO MILL THRU INCLUDING FRIDAY. CIRCULATED UNTIL RETURNS WERE CLEANER.

1 - 3 GAL PER 10 BBLS: CL-299 (CORROSION INHIBITOR).

1 - 1 1/2 GAL PER 10 BBLS: F-86 (FOAMER).

SHUTDOWN AIR/MIST. HANG BACK POWER SWIVEL. TRIP IN WITH MILL/SHOE. TAG FILL/SAND AT 4,980'.

RESTART AIR UNIT AT 1,200 CFM AT 900 TO 1,100 PSI WITH MIST AT 15 BPH. CONTINUE CLEANING DOWN. UNABLE TO GET ANY DEEPER (4,985'). MAKING LIGHT SAND. CIRCULATED UNTIL RETURNS WERE CLEANER.

1 - 3 GAL PER 10 BBLS: CL-299 (CORROSION INHIBITOR).

1 - 1 1/2 GAL PER 10 BBLS: F-86 (FOAMER).

SHUTDOWN AIR/MIST. HANG BACK POWER SWIVEL.



Well Operations Summary L48

Well Name: LIVELY #12

API: 3004521199	Field: BASIN DAKOTA (PRORATED GAS)	State: NEW MEXICO
	Sundry #:	Rig/Service: DWS 34

Operation		
TRIP OUT OF WELL WITH TUBING MILL/SHOE ASSEMBLY. MAKE UP PACKER SPEAR ASSEMBLY: 1- 1.875" O.D. (.25" I.D.) X 3.70' SPEAR DRESSED WITH 2,398" O.D. GRAPPLE (3.70'). 1- 3.125" O.D. (1.125" I.D.) X 1.17' CIRCULATING SUB (1.17'). 1- 3.125" O.D. (1.0" I.D.) X 4.59' BUMPER SUB (4.59'). 1- 3.125" O.D. (1.0625" I.D.) X 1.38' FLOAT SUB (1.38'). 1- 3.1875" O.D. X (1.0" I.D.) X 8.45' HYDRAULIC JARS (8.45'). 6- 3.125" O.D. (26 LBS/FT) DRILL COLLARS (OVERALL LENGTH-186.12'). 1- 3.1875" O.D. (1.0" I.D.) X 8.60' INTENSIFIER (8.60'). 1- 3.0625" O.D. (1.0625" I.D.) 2 3/8" I.F. X 2 3/8" EUE CROSSOVER (.50'). 2 3/8" 4.7# J-55 WORK STRING TUBING.		
TRIP IN WITH 2 3/8" WORK STRING & PACKER SPEAR ASSEMBLY. TRIPPED TO 3,279'.		
SHUT IN, SECURED WELL. WINTERIZED RIG PUMP & AIR UNIT. SECURED RIG AND ALL EQUIPMENT. SHUTDOWN JOB OPERATIONS FOR THE EVENING.		
CREW TRAVEL TO YARD.		
Report Number 27	Report Start Date 4/16/2024	Report End Date 4/16/2024
Operation		
CREW TRAVEL TO WELLSITE. CREW ON HILCORP YARD AT 0500 HOURS.		
PJSA WITH CREWS.		
CHECK WELL PRESSURES. SITP-0 PSI (STRING FLOAT). SICP-950 PSI. SIIICP-0 PSI. SIBHP- 0 PSI. OPEN WELL TO TANK. FLOWING BACK MIST/WATER AND N2 GAS.		
CONTINUE TRIP IN WITH SPEAR ASSEMBLY. TAG FILL AT 4,963'.		
START AIR UNIT AT 1,200 CFM AT 800 TO 1,000 PSI WITH MIST AT 15 BPH. CLEAN DOWN TO PACKER. LATCHED INTO PACKER WITH SPEAR. BEGIN JARRING ON PACKER. PULLING TO 50,000 LBS. SETTING OF JARS AND JARRING DOWN WITH THE STRING WEIGHT. STARTED HAVING MORE DRAG WHILE COMING UP WITH THE STRING. APPEARED TO HAVE PACKER. CIRCULATE UNTIL RETURNS WERE CLEANER. 1 - 3 GAL PER 10 BBLS: CL-299 (CORROSION INHIBITOR). 1 - 1 1/2 GAL PER 10 BBLS: F-86 (FOAMER).		
SHUTDOWN AIR/MIST. HANG BACK POWER SWIVEL ASSEMBLY. TRIP OUT OF WELL WITH TUBING & TOOLS. RECOVERED FRAC PACKER ASSEMBLY. WIRELINE REENTRY GUIDE WAS NOT SCARRED OR MARKED.		
MAKE UP JUNK MILL ASSEMBLY: 1- 3.875" O.D. (1.0" I.D.) X 2.11' 5-BLADE JUNK MILL (2.11'). 1- 3.0625" O.D. (1.125" I.D.) X 1.34' BIT SUB (1.34'). 1- 3.1875" O.D. X (1.0" I.D.) X 8.45' HYDRAULIC JARS (8.45'). 6- 3.125" O.D. (26 LBS/FT) DRILL COLLARS (OVERALL LENGTH-186.12'). 1- 3.0625" O.D. (1.0625" I.D.) 2 3/8" I.F. X 2 3/8" EUE CROSSOVER (.50'). 2 3/8" 4.7# J-55 WORK STRING TUBING.		
TRIP IN WITH 2 3/8" WORK STRING & JUNK MILLPACKER ASSEMBLY. TAGGED FILL/JUNK AT 4,988'.		
RIG UP POWER SWIVEL ASSEMBLY.		
START AIR UNIT AT 1,200 CFM AT 900 TO 1,100 PSI WITH MIST AT 15 BPH. START CLEANING OUT FILL/JUNK. MAKING SMALL METAL PIECES & HEAVY FRAC SAND AT 1/4 OF A 5-GAL BUCKET DOWN TO A CUP. CLEANED DOWN TO 5,066'. CIRCULATED UNTIL RETURNS WERE CLEANER. 1 - 3 GAL PER 10 BBLS: CL-299 (CORROSION INHIBITOR). 1 - 1 1/2 GAL PER 10 BBLS: F-86 (FOAMER).		
SHUTDOWN AIR/MIST. HANG BACK POWER SWIVEL. TRIP MILL ASSEMBLY/TUBING TO 4,970'.		
SHUT IN, SECURED WELL. WINTERIZED RIG PUMP & AIR UNIT. SECURED RIG AND ALL EQUIPMENT. SHUTDOWN JOB OPERATIONS FOR THE EVENING.		
CREW TRAVEL TO YARD.		
Report Number 28	Report Start Date 4/17/2024	Report End Date 4/17/2024
Operation		
CREW TRAVEL TO WELLSITE. CREW ON HILCORP YARD AT 0500 HOURS.		
PJSA WITH CREWS.		
CHECK WELL PRESSURES. SITP-0 PSI (STRING FLOAT). SICP-850 PSI. SIIICP-0 PSI. SIBHP- 0 PSI. OPEN WELL TO TANK. FLOWING BACK MIST/WATER AND N2 GAS. START & SERVICE EQUIPMENT.		
TRIP IN WITH 2 3/8" WORK STRING & JUNK MILLPACKER ASSEMBLY. TAGGED FILL AT 5,060' (6' OF FILL FROM YESTERDAYS CLEANOUT RUN).		
RIG UP POWER SWIVEL ASSEMBLY.		
START AIR UNIT AT 1,200 CFM AT 900 TO 1,100 PSI WITH MIST AT 15 BPH. START CLEANING OUT SAND FILL/JUNK. MADE SOME SMALL METAL PIECES & FRAC SAND AT 1/4 OF A 5-GAL BUCKET DOWN TO 1/2 CUP. CLEANED DOWN TO 5,390'. MILLED OUT FRAC BAFFLE AT 5,390'. CIRCULATED UNTIL RETURNS WERE CLEAN. MADE ADDITIONAL WATER AT 2 BBLS PER HOUR OVER THE MIST RATE. 1 - 3 GAL PER 10 BBLS: CL-299 (CORROSION INHIBITOR). 1 - 1 1/2 GAL PER 10 BBLS: F-86 (FOAMER).		
SHUTDOWN AIR/MIST. SWIVEL IN WITH 4 TUBING JOINTS TO 5,533'. NO OBSTRUCTIONS. HANG BACK POWER SWIVEL. PULL TUBING/MILL TO 5,060'.		
SHUT IN, SECURED WELL. SECURED RIG AND ALL EQUIPMENT. SHUTDOWN JOB OPERATIONS FOR THE EVENING.		



Well Operations Summary L48

Well Name: LIVELY #12

API: 3004521199

Field: BASIN DAKOTA (PRORATED GAS)

State: NEW MEXICO

Sundry #:

Rig/Service: DWS 34

Operation

CREW TRAVEL TO YARD.

Report Number 29	Report Start Date 4/18/2024	Report End Date 4/18/2024
---------------------	--------------------------------	------------------------------

Operation

CREW TRAVEL TO WELLSITE. CREW ON HILCORP YARD AT 0500 HOURS.

PJSA WITH CREWS.

CHECK WELL PRESSURES. SITP-0 PSI (STRING FLOAT). SICP-750 PSI. SIIICP-0 PSI. SIBHP- 0 PSI. OPEN WELL TO TANK. FLOWING BACK MIST/WATER AND N2 GAS. START & SERVICE EQUIPMENT.

TRIP INTO WELL WITH TUBING/MILL TO 5,533'. NO OBSTRUCTIONS SEEN. TRIP OUT OF WELL LAYING DOWN WELL TUBING STRING ONTO TUBING FLOAT. LAYDOWN DRILL COLLARS AND TOOLS.

WILL SEND IN 240 JOINTS OF 2 3/8" 4.7# J-55 WELL TUBING TO TUBOSCOPE FOR STORAGE.

(100- JOINTS WHITE BAND, 140- JOINTS YELLOW BAND).

MOVE IN, RIG UP BASIN WIRELINE UNIT & PERFORATING TOOLS.

MAKE UP AND RUN IN WITH 3.75" O.D. GAUGE RING TO 5,450' (NO FLUID LEVEL DETECTED).

MAKE UP AND RUN IN WITH SELECT 4 1/2" COMPOSITE BRIDGE PLUG. SET AT 5,360' WLM.

CORRELATED OFF OF GR/CCL/CBL LOG DATED 3-21-24. (NO FLUID LEVEL DETECTED).

LOAD 4 1/2" WITH 25 BBLS OF 2% KCL WATER.

BASIN HAVING TROUBLE WITH FIRING HEAD OF PERFORATING GUN. WAIT ON REPLACEMENT TO BE DELIVERED TO LOCATION.

PERFORATE MESAVERDE INTERVAL: 4,413', 4,421', 4,436', 4,440', 4,458', 4,476', 4,484', 4,491', 4,499', 4,511', 4,525', 4,536', 4,548', 4,556', 4,578', 4,596', 4,615', 4,634', 4,660', 4,669', 4,690', 4,722', 4,756', 4,826', 4,841', 4,866', 4,899', 4,927', 4,955', 4,980', 4,990', 5,003', 5,011', 5,019', 5,029', 5,039', 5,048', 5,071', 5,086', 5,114', 5,132', 5,158', 5,237', 5,292', 5,314', 5,328' WITH 46-.34" DIA. PERFORATIONS. CORRELATED OFF OF GR/CCL/CBL DATED 3-21-24. MADE 2- GUN RUNS.

PERFORATING GUNS: DYNA 2 3/4" HSC, .34" DIAMETER PERFS, 0 DEGREE PHASE, 26" PENETRATION, 15.0 GRAM CHARGES. FLUID LEVEL DROPPED IN CASING AFTER 1ST GUN RUN.

RIG DOWN, MOVE OUT BASIN WIRELINE.

SHUT IN, SECURED WELL. SECURED RIG AND ALL EQUIPMENT. SHUTDOWN JOB OPERATIONS FOR THE EVENING.

CREW TRAVEL TO YARD.

Report Number 30	Report Start Date 4/19/2024	Report End Date 4/19/2024
---------------------	--------------------------------	------------------------------

Operation

CREW TRAVEL TO WELLSITE. CREW ON HILCORP YARD AT 0500 HOURS.

PJSA WITH CREWS.

CHECK WELL PRESSURES. SICP-750 PSI. SIIICP-0 PSI. SIBHP- 0 PSI. OPEN WELL TO TANK. FLOWING BACK MIST/WATER. BLOWDOWN 15 MINUTES.

MAKE UP SELECT OIL TOOLS 4 1/2" AS1-X FRAC PACKER WITH DUAL DISC ASSEMBLY.

FRAC PACKER BHA:

- 1- 3.1875" O.D. (2.0" I.D.) X .4' WIRELINE REENTRY GUIDE (.40').
- 1- 3.1875" O.D. (2.0" I.D.) X 1.30' DUAL DISC SUB (1.30').
- 1- 3.750" O.D. (2.0" I.D.) X 6.47' AS1-X FRAC PACKER (6.47').

TRIP INTO WELL WITH FRAC PACKER AND 2 7/8" RTS-8 FRAC TUBING STRING. SPACE OUT STRING WITH PUP JOINTS. INSTALL FRAC TUBING HANGER, SET AND LAND FRAC PACKER WITH 12K COMPRESSION.

FRAC TUBING ASSEMBLY:

- 1- 7 1/16" X 2 7/8" 3K TBG HANGER (.50').
- 1- 2 7/8" L-80 PUP JOINT (9.72').
- 1- 2 7/8" L-80 PUP JOINT (4.08').
- 1- 2 7/8" L-80 PUP JOINT (1.05').
- 1- 2 7/8" EUE X 2 7/8" RTS-8 CROSSOVER (1.32').
- 140- 2 7/8" P-110 RTS-8 TUBING JOINTS (4,289.19').
- 1- 3 1/4" P-110 RTS-8 MARKER PUP JOINT (2.0')
- 1- 2 7/8" P-110 RTS-8 TUBING JOINT (30.48')
- 1- 2 7/8" RTS-8 X 2 7/8" EUE CROSSOVER (1.25').
- 1- 2 7/8" EUE X 2 3/8" EUE CROSSOVER (.41').
- 1- 3.750" O.D. (2.0" I.D.) X 6.47' AS1-X FRAC PACKER (6.47').
- 1- 3.1875" O.D. (2.0" I.D.) X 1.30' DUAL DISC SUB (1.30').
- 1- 3.1875" O.D. (2.0" I.D.) X .4' WIRELINE REENTRY GUIDE (.40').

K.B.- 12'

DUAL DISC SUB- 4,359.77'.

SELECT OIL TOOLS 4 1/2" COMPOSITE BRIDGE PLUG- 5,360'.



Well Operations Summary L48

Well Name: LIVELY #12

API: 3004521199

Field: BASIN DAKOTA (PRORATED GAS)

State: NEW MEXICO

Sundry #:

Rig/Service: DWS 34

Operation

MOVE IN BIG RED & WELLCHECK. RIG DOWN FLOOR AND TUBING TOOLS. NIPPLE DOWN BOP ASSEMBLY. NIPPLE UP 10K FRAC STACK ASSEMBLY. LOAD 4 1/2" CASING/TUBING ANNULUS WITH 40 BBLs. TEST TO 200 PSI. TEST GOOD. TEST VOID SEALS. TEST GOOD. TEST 2 7/8" FRAC STRING & 10K FRAC STACK ASSEMBLY TO 8,000 PSI FOR 30 MINUTES. TEST GOOD. RIG DOWN BIG RED & WELLCHECK.

MOVE IN, RIG UP EXPERT SLICKLINE SERVICES. MAKE UP AND RUN IN WITH 1.875" O.D. SPEAR TO 4,355' SLM. BREAK DISC WITH 8 HITS. TBG WENT ON SLIGHT VACUUM. CONTINUE DOWN TO 4,550' SLM. NO OBSTRUCTION SEEN. RIG DOWN, RELEASE EXPERT.

RIG DOWN SERVICE UNIT AND ALL EQUIPMENT. PREPARE FOR RIG MOVE OPERATIONS.

CREW TRAVEL TO YARD.

Report Number 31	Report Start Date 5/4/2024	Report End Date 5/4/2024
---------------------	-------------------------------	-----------------------------

Operation

MIRU FRAC AND WIRELINE CREWS. PRIME, COOL DOWN, TEST, SAFETY MEETING. PUT 500 PSI ON FRAC STRING ANNULUS. LOAD BALL GUN.

FRAC STAGE 2: BROKE DOWN WELL WITH WATER AND 1000 GAL 15% HCL. FOAM FRAC'D MESAVERDE WITH 250,400 LBS 20/40 ARIZONA AND 83,916 GAL SLICKWATER AND 2.90 MILLION SCF N2. 70 QUALITY. AVG RATE = 60 BPM, AVG PSI = 4,922. ISIP WAS 1523 PSI (1103 PSI IN 5 MINUTES). PUMPED TWO 125,000 LB SAND RAMPS AND DROPPED 23 7/8" RCN BALLS IN BETWEEN RAMPS.

SHUT IN WELL AND RIG DOWN CREWS. TOTAL FRAC LOAD FOR BOTH STAGES = 4,887 BBLs (INCLUDING 48 BBLs OF ACID). TOTAL SAND = 450,590 LBS. TOTAL N2 = 7.1 MILLION SCF.

Report Number 32	Report Start Date 5/6/2024	Report End Date 5/6/2024
---------------------	-------------------------------	-----------------------------

Operation

LOAD UP EQUIP AT SJ 29-7 U534 AND MOVE.

MIRU WSU AND SPOT IN EQUIP.

MIRU IDEAL AND BLEED DOWN WELL PRESS OVERNIGHT.

TRAVE TIME BACK TO THE YARD.

Report Number 33	Report Start Date 5/7/2024	Report End Date 5/7/2024
---------------------	-------------------------------	-----------------------------

Operation

TRAVEL TIME TO LOCATION.

PJSM, START AND WARM UP EQUIP.

TBG PRESS 200 PSI

CSG PRESS 0 PSI

BH 0 PSI

KILL TBG WITH 30 BBL OF WATER.

KILL TBG W/35 BBL, INSTALL 2 WAY CHECK, ND FRAC STACK, NU BOP TEST IT BY WELLCHECK-ALL GOOD, RU RIG FLOOR, UNSET PKR, PULLED OUT TBG HANGER, RU WELLCHECK LUBRICATOR, PULL OUT 2 WAY CHECK, TBG PRESS 300 PSI, KILL TBG W/50 BBL, RD WELLCHECK.

LD FRAC STRING, 2 7/8" RTS-8, 10', 4', 1' TBG SUBS L-80, XO, 140 JTS, MJ, 1 JT, XO, PKR. CHANGE OUT TOOLS FOR 2 3/8" TBG.

SWAP OUT TBG TRAILERS, RUN IN W/3 7/8" JUNK MILL, FLOAT SUB, 6 DC 3 1/8", XO, 120 JTS 2 3/8" J-55.

SHUT IN AND SECURED WELL W/TIW VALVE AND LOCKED PIPE RAMS.

TRAVEL TIME BACK TO THE YARD.

Report Number 34	Report Start Date 5/8/2024	Report End Date 5/8/2024
---------------------	-------------------------------	-----------------------------

Operation

TRAVEL TIME TO LOCATION.

PJSM, START AND WARM UP EQUIP.

SICP 800 PSI

TBG 0 PSI

BH 0 PSI

BDT 30 MIN

PICK UP 54 JTS, TAG FILL AT 5122' (238' OF FILL TO CBP). RU SWIVEL.

KI AIR UNIT-10 BBL P/HR-1 GAL OF SOAP AND 1 GAL OF INH. CLEAN OUT 238' OF FILL-**DRILL OUT CBP AT 6360'** ON 40 MIN- TAG AGAIN PLUG AT 6015' MILL ON IT FOR 10 MIN AND FALL DOWN, TAG FIL AT 6511' (25' OF FILL ON TOP OF CBP AT 6536'), MILL OUT CBP IN 1 HR, TAG PLUG AGAIN AT 6560', MILL IT OUT ON 30 MIN, CLEAN OUT FILL AND CHASE PLUG DOWN TO 6825', CIRCULATE WELL CLEAN (JUST ABOUT 2 SPOON OF SAND ON 5 GAL SAMPLES).

KO AIR UNIT, LD 3 JTS W/ SWIVEL, HANG BACK SWIVEL, TOH W/37 STS ABOVE PERFS.

SHUT IN AND SECURED WELL.

TRAVEL TIME BACK TO THE YARD.

Report Number 35	Report Start Date 5/9/2024	Report End Date 5/9/2024
---------------------	-------------------------------	-----------------------------

Operation

TRAVEL TIME TO LOCATION.

www.peloton.com



Well Operations Summary L48

Well Name: LIVELY #12

API: 3004521199	Field: BASIN DAKOTA (PRORATED GAS)	State: NEW MEXICO
	Sundry #:	Rig/Service: DWS 34

Operation		
PJSM, START AND WARM UP EQUIP.		
SICP 700 PSI SITP 500 PSI BH 0 PSI BDT 20 MIN.		
TIH W/37 STS, PICK UP 3 JTS, TAG 5' OF ADDITIONAL FILL AT 6820', RU SWIVEL.		
CLEAN OUT AND MILL OUT PARTS FROM PLUG- FROM 6820' TO TOP OF CIBP AT 6989' (169').		
MILL OUT CIBP ON 2.5 HRS, CLEAN OUT FILL AND MILL ON PLUG TO BOTTOM AT 7283', CIRCULATED CLEAN.		
LD 2 JTS W/ SWIVEL, HANG BACK SWIVEL, TOH W/46 STS.		
SHUT IN AND SECURED WELL.		
TRAVEL TIME BACK TO THE YARD.		
Report Number 36	Report Start Date 5/10/2024	Report End Date 5/10/2024
Operation		
TRAVEL FROM YARD TO WELLSITE		
PRE JOB SAFETY MEETING, DISCUSS TRIPPING AND LAYING DOWN DRILL COLLARS, BRADENHEAD 0 PSI, CASING 600 PSI, TUBING 0-PSI, BD 10 MINUTES		
TRIP OUT TO DRILL COLLARS, KILL WELL WITH 35 BBLS WATER, CONTINUE TRIP OUT, LD 3 COLLARS WELL COMING AROUND, KILL WELL WITH 50 BBLS WATER FINISH LD DRILL COLLARS		
RIG UP WIRELINE GROUP, RUN SINGLE SHOT PERFORATING GUNS, PERF CHACRA 4066', 4062', 4036', 4024', 3981', 3893', 3863', 3852', 3842', 3831', 3772', 3749', 3747', 3734', 3724', 3722', 3720', 3715', 3713', 3611', 3574', 3483', 3470', 3384', 3344' , RIG DOWN THE WIRELINE GROUP		
TRIP IN HOLE, LAY DOWN 12 JOINTS WHILE TRIPPING, WOULD NOT DRIFT. RUN ALL PIPE IN THE DERRICK		
SHUT IN SECURE WELL		
TRAVEL FROM WELL SITE TO DRAKE YARD		
Report Number 37	Report Start Date 5/11/2024	Report End Date 5/11/2024
Operation		
GATHER RIG SUPPLIES, TRAVEL FROM DRAKE YARD TO WELLSITE		
PRE JOB SAFETY MEETING, DISCUSS TRIPPING, BRADENHEAD 0 PSI, CASING 575 PSI, TUBING 0 PSI, BD 10 MIN		
TRIP IN HOLE, TAG FILL @ 7281', 2' FILL, LAND 227 JTS 2 3/8", 4.7# J-55 TUBING @ 7101' .		
NIPPLE DOWN BOPE, SEPERATE MUD CROSS FROM BOP, NIPPLE UP WELLHEAD		
DROP BALL ON CHECK, USING AIR PRESSURE TEST TUBING TO 500 PSI 10 MINUTES, GOOD TEST, PUMP OFF CHECK @ 1500 PSI		
RIG DOWN TO MOVE OFF, RIG RELEASED @ 14:00 HRS 5/11/24		

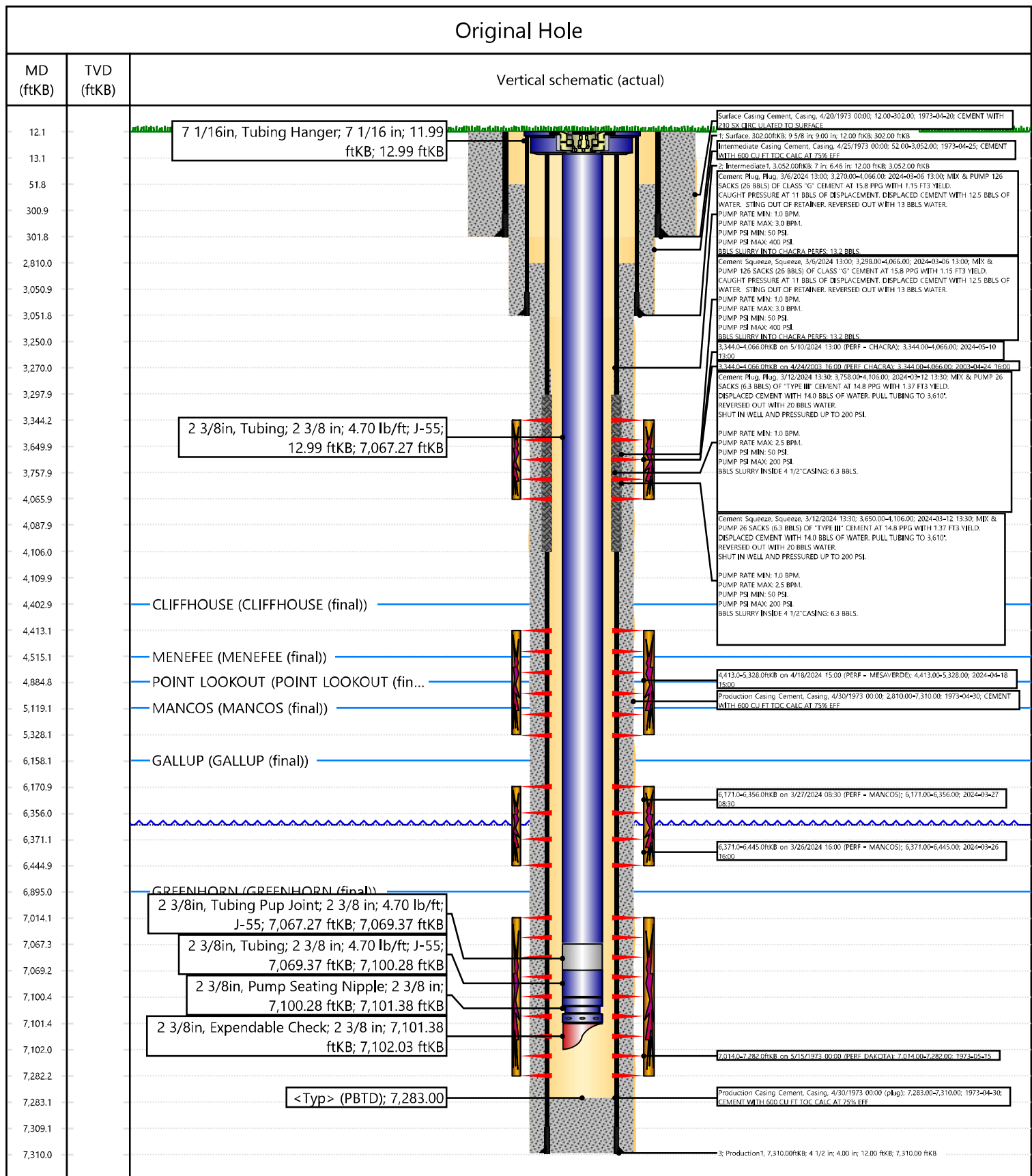
The well is producing as a MV/MC/CH/DK quadmingle on Test Allowable waiting on RC C-104 approval.

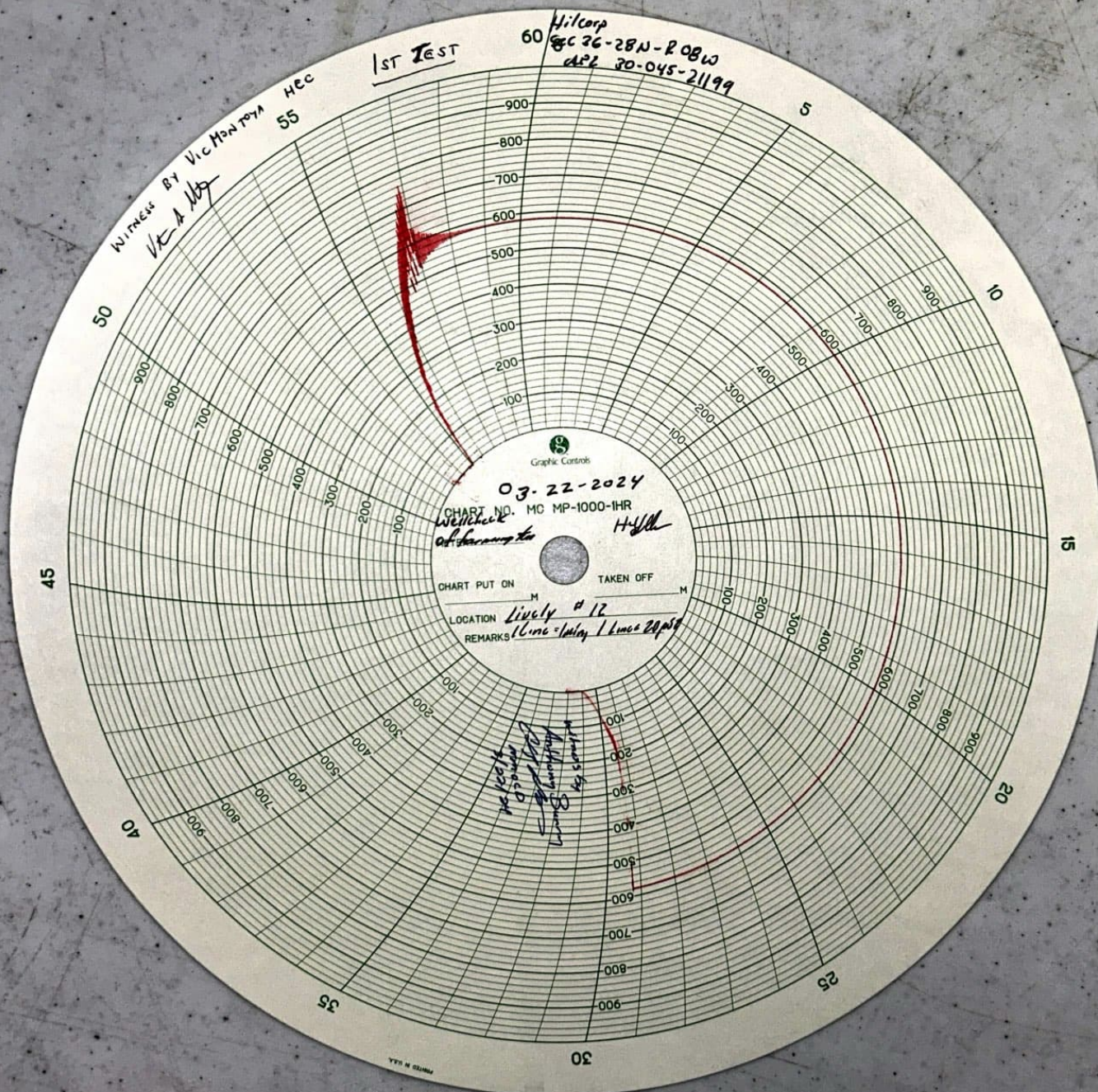


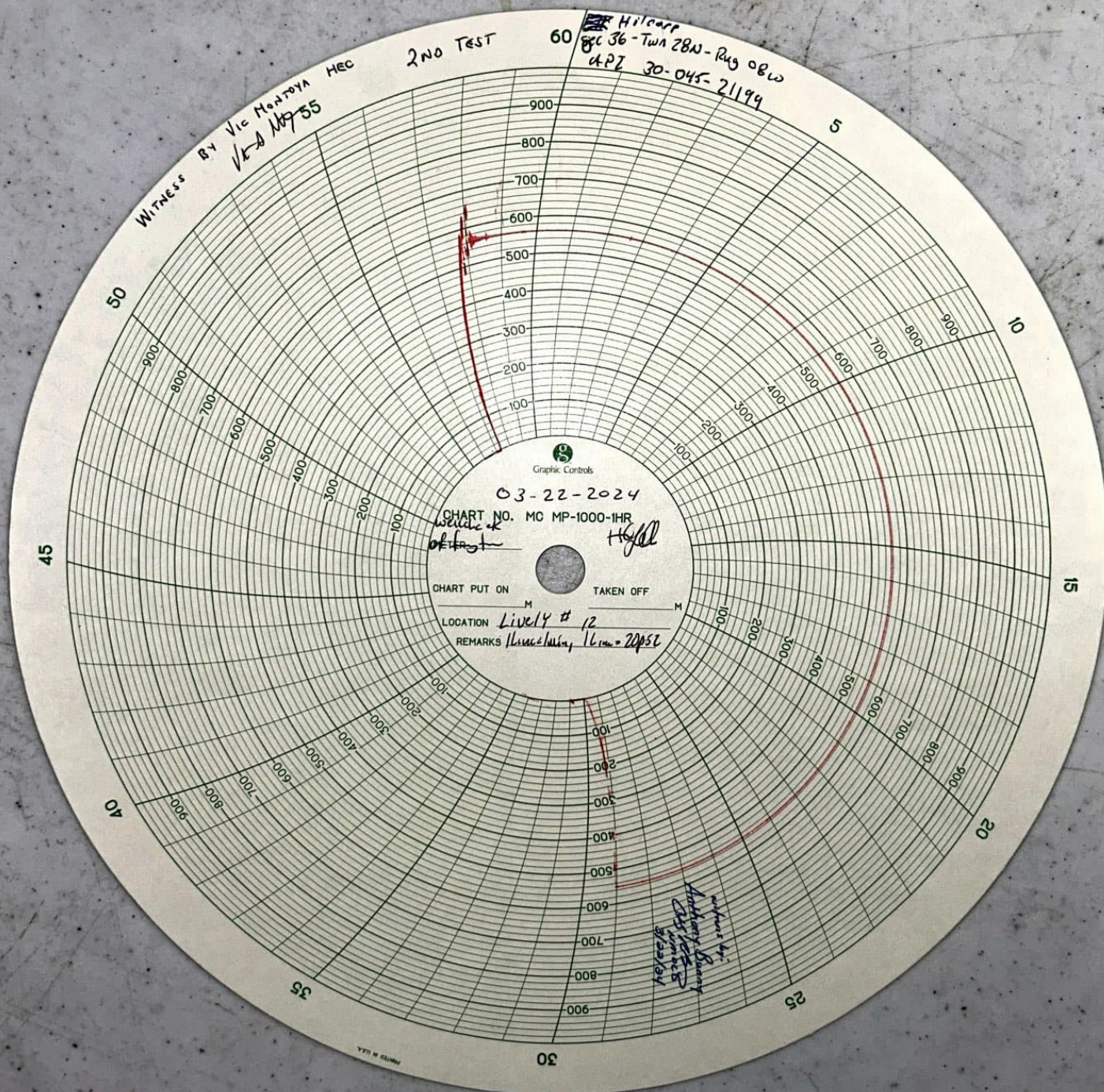
Current Schematic - Version 3

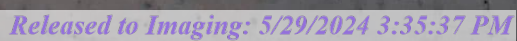
Well Name: **LIVELY #12**

API / UWI 3004521199	Surface Legal Location 036-028N-008W-L	Field Name BASIN DAKOTA (PRORATED GAS)	Route 0901	State/Province NEW MEXICO	Well Configuration Type
Ground Elevation (ft) 6,351.00	Original KB/RT Elevation (ft) 6,363.00	Tubing Hanger Elevation (ft)	RKB to GL (ft) 12.00	KB-Casing Flange Distance (ft)	KB-Tubing Hanger Distance (ft)









Cheryl Weston

From: blm-afmss-notifications@blm.gov
Sent: Friday, May 24, 2024 10:12 AM
To: Cheryl Weston
Subject: [EXTERNAL] Well Name: LIVELY, Well Number: 12, Notification of Well Completion Acceptance

CAUTION: External sender. DO NOT open links or attachments from UNKNOWN senders.

The Bureau of Land Management

Notice of Acceptance for Well Completion Report

- Operator Name: **HILCORP ENERGY COMPANY**
- Well Name: **LIVELY**
- Well Number: **12**
- US Well Number: **3004521199**
- Well Completion Report Id: **WCR2024052491860**

This notification is automatically generated. Please do not reply to this message as this account is not monitored.

UNITED STATES
DEPARTMENT OF THE INTERIOR
BUREAU OF LAND MANAGEMENT

FORM APPROVED
OMB No. 1004-0137
Expires: July 31, 2018

WELL COMPLETION OR RECOMPLETION REPORT AND LOG

5. Lease Serial No.

NMNM015150

1a. Type of Well ☐ Oil Well ☒ Gas Well ☐ Dry ☐ Other
b. Type of Completion: ☐ New Well ☐ Work Over ☐ Deepen ☐ Plug Back ☐ Diff. Resvr.,

6. If Indian, Allottee or Tribe Name

7. Unit or CA Agreement Name and No.

Other: RECOMPLETE

2. Name of Operator

Hilcorp Energy Company

8. Lease Name and Well No.

Lively 12

3. Address

382 Rd 3100, Aztec NM 87410

3a. Phone No. (include area code)

(505) 333-1700

30-045-21199

4. Location of Well (Report location clearly and in accordance with Federal requirements)*

At surface Unit L (NWSW), 1650' FSL & 990' FWL

10. Field and Pool or Exploratory

Blanco Mesaverde

At top prod. Interval reported below

Same as above

11. Sec., T., R., M., on Block and

Survey or Area

Sec. 36, T28N, R08W

At total depth

Same as above

12. County or Parish

San Juan

13. State

New Mexico

14. Date Spudded

4/20/1973

15. Date T.D. Reached

4/30/1973

16. Date Completed

5/12/2024

☐ D & A

☒ Ready to Prod.

17. Elevations (DF, RKB, RT, GL)*

6,351'

18. Total Depth:

7,310'

19. Plug Back T.D.:

7,283'

20. Depth Bridge Plug Set:

MD

4570'

TVD

21. Type Electric & Other Mechanical Logs Run (Submit copy of each)

CBL

22. Was well cored?

☒ No

☐ Yes (Submit analysis)

Was DST run?

☒ No

☐ Yes (Submit report)

Directional Survey?

☒ No

☐ Yes (Submit copy)

23. Casing and Liner Record (Report all strings set in well)

Hole Size	Size/Grade	Wt. (#/ft.)	Top (MD)	Bottom (MD)	Stage Cementer Depth	No. of Sk. & Type of Cement	Slurry Vol. (BBL)	Cement top*	Amount Pulled
13 3/4"	9 5/8" H-40	32#	0	302'	n/a	210 sx			
8 3/4"	7" J-55	20#, 17#	0	3,052'	n/a	250 sx			
6 1/4"	4 1/2" K-55	11.6#, 10.5#	3,284'	7,310'	n/a	200 sx			

24. Tubing Record

Size	Depth Set (MD)	Packer Depth (MD)	Size	Depth Set (MD)	Packer Depth (MD)	Size	Depth Set (MD)	Packer Depth (MD)
2 3/8"	7,101'							

25. Producing Intervals

Formation	Top	Bottom	Perforated Interval	Size	No. Holes	Perf. Status
A) Mesaverde	4,413'	5,328'	1 SPF	.34"	46	open
B)						
C)						
D)						
TOTAL					46	

26. Perforation Record

27. Acid, Fracture, Treatment, Cement Squeeze, etc.

Depth Interval	Amount and Type of Material
4413-5328	BDW w/ water & 1000 gal 15% HCl. Foam Frac w/ 250,400# 20/40 sand, 83,916 gal slickwater & 2.90M SCF N2 70 Q
-	
-	

28. Production - Interval A

Date First Produced	Test Date	Hours Tested	Test Production	Oil BBL	Gas MCF	Water BBL	Oil Gravity Corr. API	Gas Gravity	Production Method
5/12/2024	5/12/2024	4	➡	0	81	0	n/a	n/a	Flowing
Choke Size	Tbg. Press. Flwg.	Csg. Press.	24 Hr. Rate	Oil BBL	Gas MCF	Water BBL	Gas/Oil Ratio	Well Status	
20/64"	420 psi	275 psi	➡	0	81	0	n/a	Producing	

28a. Production - Interval B

Date First Produced	Test Date	Hours Tested	Test Production	Oil BBL	Gas MCF	Water BBL	Oil Gravity Corr. API	Gas Gravity	Production Method
			➡						
Choke Size	Tbg. Press. Flwg. SI	Csg. Press.	24 Hr. Rate	Oil BBL	Gas MCF	Water BBL	Gas/Oil Ratio	Well Status	
			➡						

*(See instructions and spaces for additional data on page 2)

28b. Production - Interval C									
Date First Produced	Test Date	Hours Tested	Test Production	Oil BBL	Gas MCF	Water BBL	Oil Gravity Corr. API	Gas Gravity	Production Method
			➡						
Choke Size	Tbg. Press. Flwg. SI	Csg. Press.	24 Hr. Rate	Oil BBL	Gas MCF	Water BBL	Gas/Oil Ratio	Well Status	
			➡						

28c. Production - Interval D									
Date First Produced	Test Date	Hours Tested	Test Production	Oil BBL	Gas MCF	Water BBL	Oil Gravity Corr. API	Gas Gravity	Production Method
			➡						
Choke Size	Tbg. Press. Flwg. SI	Csg. Press.	24 Hr. Rate	Oil BBL	Gas MCF	Water BBL	Gas/Oil Ratio	Well Status	
			➡						

29. Disposition of Gas (Solid, used for fuel, vented, etc.)

Sold

30. Summary of Porous Zones (Include Aquifers):	31. Formation (Log) Markers
Show all important zones of porosity and contents thereof: Cored intervals and all drill-stem test, including depth interval tested, cushion used, time tool open, flowing and shut-in pressures and recoveries.	

Formation	Top	Bottom	Descriptions, Contents, etc.	Name	Top
					Meas. Depth
Ojo Alamo			White, cr-gr ss	Ojo Alamo	
Kirtland			Gry sh interbedded w/tight, gry, fine-gr ss.	Kirtland	
Fruitland			Dk gry-gry carb sh, coal, grn silts, light-med gry, tight, fine gr ss.	Fruitland	
Pictured Cliffs			Bn-Gry, fine grn, tight ss.	Pictured Cliffs	
Lewis			Shale w/ siltstone stingers	Lewis	
Huerfanito Bentonite			White, waxy chalky bentonite	Huerfanito Bentonite	
Chacra	3,344'	4403'	Gry fn grn silty, glauconitic sd stone w/ drk gry shale	Chacra	3,344'
Cliff House	4,403'	4515'	Light gry, med-fine gr ss, carb sh & coal	Cliff House	4,403'
Menefee	4,515'	4885'	Med-dark gry, fine gr ss, carb sh & coal	Menefee	4,515'
Point Lookout	4,885'	5119'	Med-light gry, very fine gr ss w/ frequent sh breaks in lower part of formation	Point Lookout	4,885'
Mancos	5,119'	6158'	Dark gry carb sh.	Mancos	5,119'
Gallup	6,158'	6895'	Lt. gry to brn calc carb micac gluc silts & very fine gry gry ss w/ irreg. interbed sh.	Gallup	6,158'
Greenhorn	6,895'	6962'	Highly calc gry sh w/ thin lmst.	Greenhorn	6,895'
Graneros	6,962'	6992'	Dk gry shale, fossil & carb w/ pyrite incl.	Graneros	6,962'
Dakota	6,992'		Lt to dark gry foss carb sl calc sl sitty ss w/ pyrite incl thin sh bands cly Y shale breaks	Dakota	6,992'
Morrison			Interbed grn, brn & red waxy sh & fine to coard grn ss	Morrison	

32. Additional remarks (include plugging procedure):

This well is currently producing as a MV/MC/CH/DK quadmingle per DHC-5366.

33. Indicate which items have been attached by placing a check in the appropriate boxes:			
<input type="checkbox"/> Electrical/Mechanical Logs (1 full set req'd.)	<input type="checkbox"/> Geologic Report	<input type="checkbox"/> DST Report	<input type="checkbox"/> Directional Survey
<input type="checkbox"/> Sundry Notice for plugging and cement verification	<input type="checkbox"/> Core Analysis	<input type="checkbox"/> Other:	

34. I hereby certify that the foregoing and attached information is complete and correct as determined from all available records (see attached instructions)*

Name (please print)	Cherylene Weston	Title	Operations/Regulatory Technician
Signature	Cherylene Weston	Date	5/24/2024

Title 18 U.S.C. Section 1001 and Title 43 U.S.C. Section 1212, make it a crime for any person knowingly and willfully to make to any department or agency of the United States any false, fictitious or fraudulent statements or representations as to any matter within its jurisdiction.

UNITED STATES
DEPARTMENT OF THE INTERIOR
BUREAU OF LAND MANAGEMENTFORM APPROVED
OMB No. 1004-0137
Expires: July 31, 2018

WELL COMPLETION OR RECOMPLETION REPORT AND LOG

1a. Type of Well ☐ Oil Well ☒ Gas Well ☐ Dry ☐ Other
b. Type of Completion: ☐ New Well ☐ Work Over ☐ Deepen ☐ Plug Back ☐ Diff. Resvr.,

Other: RECOMPLETE

2. Name of Operator

Hilcorp Energy Company

3. Address

382 Rd 3100, Aztec NM 87410

3a. Phone No. (include area code)

(505) 333-1700

4. Location of Well (Report location clearly and in accordance with Federal requirements)*

At surface Unit L (NWSW), 1650' FSL & 990' FWL

At top prod. Interval reported below

Same as above

At total depth

Same as above

14. Date Spudded

4/20/1973

15. Date T.D. Reached

4/30/1973

16. Date Completed

5/12/2024

☐ D & A☒ Ready to Prod.

17. Elevations (DF, RKB, RT, GL)*

6,351'

18. Total Depth:

7,310'

19. Plug Back T.D.:

7,283'

20. Depth Bridge Plug Set:

MD

4570'

TVD

21. Type Electric & Other Mechanical Logs Run (Submit copy of each)

CBL

22. Was well cored?

☒ No☐ Yes (Submit analysis)

Was DST run?

☒ No☐ Yes (Submit report)

Directional Survey?

☒ No☐ Yes (Submit copy)

23. Casing and Liner Record (Report all strings set in well)

Hole Size	Size/Grade	Wt. (#/ft.)	Top (MD)	Bottom (MD)	Stage Cementer Depth	No. of Sks. & Type of Cement	Slurry Vol. (BBL)	Cement top*	Amount Pulled
13 3/4"	9 5/8" H-40	32#	0	302'	n/a	210 sx			
8 3/4"	7" J-55	20#, 17#	0	3,052'	n/a	250 sx			
6 1/4"	4 1/2" K-55	11.6#, 10.5#	3,284'	7,310'	n/a	200 sx			

24. Tubing Record

Size	Depth Set (MD)	Packer Depth (MD)	Size	Depth Set (MD)	Packer Depth (MD)	Size	Depth Set (MD)	Packer Depth (MD)
2 3/8"	7,101'							

25. Producing Intervals

Formation	Top	Bottom	Perforated Interval	Size	No. Holes	Perf. Status
A) Mancos	6,171'	6,445'	1 SPF	.37"	124	open
B)						
C)						
D)						
TOTAL					124	

27. Acid, Fracture, Treatment, Cement Squeeze, etc.

Depth Interval	Amount and Type of Material
6171-6445	BDW w/ water & 1000 gal 15% HCl. Foam Frac w/ 200,190# 20/40 sand, 110,502 gal slickwater & 4.17M SCF N2 60 Q
-	
-	

28. Production - Interval A

Date First Produced	Test Date	Hours Tested	Test Production	Oil BBL	Gas MCF	Water BBL	Oil Gravity Corr. API	Gas Gravity	Production Method
5/12/2024	5/12/2024	4	➡	0	81	0	n/a	n/a	Flowing
Choke Size	Tbg. Press. Flwg.	Csg. Press.	24 Hr. Rate	Oil BBL	Gas MCF	Water BBL	Gas/Oil Ratio	Well Status	
20/64"	420 psi	275 psi	➡	0	81	0	n/a	Producing	

28a. Production - Interval B

Date First Produced	Test Date	Hours Tested	Test Production ➡	Oil BBL	Gas MCF	Water BBL	Oil Gravity Corr. API	Gas Gravity	Production Method
Choke Size	Tbg. Press. Flwg. SI	Csg. Press.	24 Hr. Rate ➡	Oil BBL	Gas MCF	Water BBL	Gas/Oil Ratio	Well Status	

*(See instructions and spaces for additional data on page 2)

28b. Production - Interval C

Date First Produced	Test Date	Hours Tested	Test Production	Oil BBL	Gas MCF	Water BBL	Oil Gravity Corr. API	Gas Gravity	Production Method
			➡						
Choke Size	Tbg. Press. Flwg. SI	Csg. Press.	24 Hr. Rate	Oil BBL	Gas MCF	Water BBL	Gas/Oil Ratio	Well Status	
			➡						

28c. Production - Interval D

Date First Produced	Test Date	Hours Tested	Test Production	Oil BBL	Gas MCF	Water BBL	Oil Gravity Corr. API	Gas Gravity	Production Method
			➡						
Choke Size	Tbg. Press. Flwg. SI	Csg. Press.	24 Hr. Rate	Oil BBL	Gas MCF	Water BBL	Gas/Oil Ratio	Well Status	
			➡						

29. Disposition of Gas (Solid, used for fuel, vented, etc.)

Sold

30. Summary of Porous Zones (Include Aquifers):

Show all important zones of porosity and contents thereof: Cored intervals and all drill-stem test, including depth interval tested, cushion used, time tool open, flowing and shut-in pressures and recoveries.

31. Formation (Log) Markers

Formation	Top	Bottom	Descriptions, Contents, etc.	Name	Top
					Meas. Depth
Ojo Alamo			White, cr-gr ss	Ojo Alamo	
Kirtland			Gry sh interbedded w/tight, gry, fine-gr ss.	Kirtland	
Fruitland			Dk gry-gry carb sh, coal, grn silts, light-med gry, tight, fine gr ss.	Fruitland	
Pictured Cliffs			Bn-Gry, fine grn, tight ss.	Pictured Cliffs	
Lewis			Shale w/ siltstone stingers	Lewis	
Huerfanito Bentonite			White, waxy chalky bentonite	Huerfanito Bentonite	
Chacra	3,344'	4403'	Gry fn grn silty, glauconitic sd stone w/ drk gry shale	Chacra	3,344'
Cliff House	4,403'	4515'	Light gry, med-fine gr ss, carb sh & coal	Cliff House	4,403'
Menefee	4,515'	4885'	Med-dark gry, fine gr ss, carb sh & coal	Menefee	4,515'
Point Lookout	4,885'	5119'	Med-light gry, very fine gr ss w/ frequent sh breaks in lower part of formation	Point Lookout	4,885'
Mancos	5,119'	6158'	Dark gry carb sh.	Mancos	5,119'
Gallup	6,158'	6895'	Lt. gry to brn calc carb micac gluac silts & very fine gry gry ss w/ irreg. interbed sh.	Gallup	6,158'
Greenhorn	6,895'	6962'	Highly calc gry sh w/ thin lmst.	Greenhorn	6,895'
Graneros	6,962'	6992'	Dk gry shale, fossil & carb w/ pyrite incl.	Graneros	6,962'
Dakota	6,992'		Lt to dark gry foss carb sl calc sl sitty ss w/ pyrite incl thin sh bands cly Y shale breaks	Dakota	6,992'
Morrison			Interbed grn, brn & red waxy sh & fine to coard grn ss	Morrison	

32. Additional remarks (include plugging procedure):

This well is currently producing as a MV/MC/CH/DK quadmingle per DHC-5366.

33. Indicate which items have been attached by placing a check in the appropriate boxes:

☐ Electrical/Mechanical Logs (1 full set req'd.)

☐ Geologic Report

☐ DST Report

☐ Directional Survey

☐ Sundry Notice for plugging and cement verification

☐ Core Analysis

☐ Other:

34. I hereby certify that the foregoing and attached information is complete and correct as determined from all available records (see attached instructions)*

Name (please print)

Cherylene Weston

Title

Operations/Regulatory Technician

Signature

Cherylene Weston

Date

5/24/2024

District I
1625 N. French Dr., Hobbs, NM 88240
Phone:(575) 393-6161 Fax:(575) 393-0720
District II
811 S. First St., Artesia, NM 88210
Phone:(575) 748-1283 Fax:(575) 748-9720
District III
1000 Rio Brazos Rd., Aztec, NM 87410
Phone:(505) 334-6178 Fax:(505) 334-6170
District IV
1220 S. St Francis Dr., Santa Fe, NM 87505
Phone:(505) 476-3470 Fax:(505) 476-3462

State of New Mexico
Energy, Minerals and Natural Resources
Oil Conservation Division
1220 S. St Francis Dr.
Santa Fe, NM 87505

ACKNOWLEDGMENTS

Action 348865

ACKNOWLEDGMENTS

Operator: HILCORP ENERGY COMPANY 1111 Travis Street Houston, TX 77002	OGRID: 372171
	Action Number: 348865
	Action Type: [C-104] Completion Packet (C-104C)

ACKNOWLEDGMENTS

<input checked="" type="checkbox"/>	I hereby certify that the required Water Use Report has been, or will be, submitted for this wells completion.
<input checked="" type="checkbox"/>	I hereby certify that the required FracFocus disclosure has been, or will be, submitted for this wells completion.

District I
1625 N. French Dr., Hobbs, NM 88240
Phone:(575) 393-6161 Fax:(575) 393-0720
District II
811 S. First St., Artesia, NM 88210
Phone:(575) 748-1283 Fax:(575) 748-9720
District III
1000 Rio Brazos Rd., Aztec, NM 87410
Phone:(505) 334-6178 Fax:(505) 334-6170
District IV
1220 S. St Francis Dr., Santa Fe, NM 87505
Phone:(505) 476-3470 Fax:(505) 476-3462

State of New Mexico
Energy, Minerals and Natural Resources
Oil Conservation Division
1220 S. St Francis Dr.
Santa Fe, NM 87505

CONDITIONS

Action 348865

CONDITIONS

Operator: HILCORP ENERGY COMPANY 1111 Travis Street Houston, TX 77002	OGRID: 372171
	Action Number: 348865
	Action Type: [C-104] Completion Packet (C-104C)

CONDITIONS

Created By	Condition	Condition Date
smcgrath	None	5/29/2024