

Well Name: POKER LAKE UNIT	Well Location: T24S / R29E / SEC 12 / SWSE / 32.2257927 / -103.9369148	County or Parish/State: EDDY / NM
Well Number: 274	Type of Well: OIL WELL	Allottee or Tribe Name:
Lease Number: NMNM05912	Unit or CA Name: POKER LAKE DELAWARE C	Unit or CA Number: NMNM71016G
US Well Number: 3001535138	Operator: XTO PERMIAN OPERATING LLC	

Subsequent Report

Sundry ID: 2784524

Type of Submission: Subsequent Report Type of Action: Plug and Abandonment

Date Sundry Submitted: 04/11/2024 Time Sundry Submitted: 08:55

Date Operation Actually Began: 03/05/2024

Actual Procedure: XTO Permian Operating LLC., has P&A'd the above mentioned well per the attached summary report and WBD.

SR Attachments

Actual Procedure

Poker_Lake_Unit_274_PA_Summary_Rpt_and_WBD_20240411084655.pdf

Received by OCD: 4/25/2024 9:06:58 AM

Page 2 of 6

Well Name: POKER LAKE UNIT	Well Location: T24S / R29E / SEC 12 / SWSE / 32.2257927 / -103.9369148	County or Parish/State: EDDY / NM
Well Number: 274	Type of Well: OIL WELL	Allottee or Tribe Name:
Lease Number: NMNM05912	Unit or CA Name: POKER LAKE DELAWARE C	Unit or CA Number: NMNM71016G
US Well Number: 3001535138	Operator: XTO PERMIAN OPERATING LLC	

Operator

I certify that the foregoing is true and correct. Title 18 U.S.C. Section 1001 and Title 43 U.S.C. Section 1212, make it a crime for any person knowingly and willfully to make to any department or agency of the United States any false, fictitious or fraudulent statements or representations as to any matter within its jurisdiction. Electronic submission of Sundry Notices through this system satisfies regulations requiring a

Operator Electronic Signature: SHERRY MORROW

Signed on: APR 11, 2024 08:48 AM

Name: XTO PERMIAN OPERATING LLC

Title: Regulatory Analyst

Street Address: 6401 HOLIDAY HILL ROAD BLDG 5

City: MIDLANDState: TX

Phone: (432) 218-3671

Email address: SHERRY.MORROW@EXXONMOBIL.COM

Field

Representative Name:

Street Address:

City:State:Zip:

Phone:

Email address:

BLM Point of Contact

BLM POC Name: JAMES A AMOS

BLM POC Title: Acting Assistant Field Manager

BLM POC Phone: 5752345927

BLM POC Email Address: jamos@blm.gov

Disposition: Approved

Disposition Date: 04/24/2024

Signature: James A Amos

Poker Lake Unit 274
API Number 3001535138
P&A Summary Report

3/5/24: MIRU

3/6/24: BD csg from 420 psi to 0. Tbg is communicated w/csg and BD at the same time. All others @ 0 psi. Pumped 105 bbls 10# brine down csg. Started to see psi drop on tbg. Tbg gained psi. Pumped 70 bbls 10# brine. Pumped 40 bbls 10# brine down tbg. Both went on vacuum. RU work floor and rod table and pump in Tee. PU 2 rods and screwed onto rods in hole. Unseat rod pump. TOH LD 152 ea 7/8 EL rods. TOH LD 176 ea 7/8 EL rods, 13 K bars and 1 rod pump. Secured well. Verified well secure SDFN.

3/7/24: Pumped 30 bbls 10# brine down tbg and 30 bbls 10# brine down csg. Both went on vacuum. NP FT AND PT BOP. Pipes and blinds tested to 3500 on the high sid4 and 250 on the low. Held PSI for 10 minutes each. Test good and charted. Attempted to unset TAC. Pumped 30 bbls 10# brine down tbg and 30 bbls 10# brine down the csg. Both went on vacuum. TBG parted. Lost weight from 38 pts to 11 pts. TOH LD 82 jnts 2-3/8 8 round. Total length 2,695.89'. Tbg avg is 32.92. Secured well. Verified well secure. SDFN.

3/8/24: Move in ad spot bolsters, catwalk and pipe racks. Unload tbg from trucks and set in bolsters. KW. Pumped 100 bbls 10# brine down csg. Went on vacuum. Tally tbg, make up BHA, PU and TIH. Attempt to latch onto fish. Secured well. Verified well secure. SDFN.

3/14/24: KW. Pumped 60 bbls 10# brine down csg and 40 bbls down tbg. Both went on vacuum. Attempted to latch onto fish using tngs. Not able to latch on so we RU PS and attempted to latch on. We would get on and slip off as soon as we tried to pull up. RD PS. TOH (bit run). Changed out guide and grapple. Added 2.63' length, OD 3-3/4, ID 3-1/16. TIH and RU PS. Attempted to latch onto fish. PS would whip. Torquing between 800 and 1500 ft pounds. Would seem like we would get a bite and lose weight when we attempted to pull up on it. RD PS. TOH std back tbg. LD BHA. Believe we are on a collar. Secured well. Verified well secure. SDFN.

3/15/24: Pump 90 bbls 10# brine down csg. Went on vacuum. Make up BHA. TIH to top of fish. Worked to get on fish. Pulled 20 pts over and didn't lose it. Wait on BES WLU to arrive from Rig 34. MIRU WLU. RIH w/GRJB. Tagged @ 2646'. Could not get through top of fish. POOH. RDMO WLU. Came off of fish. TOH std back tbg and LD BHA. SDFWE

3/18/24: BD csg from 180 psi to 0. All others @ 0. BH 80 bbls 10# brine down csg. Went on vacuum. Make up BHA (X-Over, 2 ea DC, X-Over, BS, X-Over, 2 ea DC, Tri Conn Bush, 3-1/8 Con Mill, 4-3/4 shoe), TIH 81 jnts. RU PS. Mill TOF. Made ~5'. RD PS. TOH LD 4 jnts. Secured well. Verified well secure. SDFN.

3/19/24: TOH 80 jnts. LD BHA. Make up BHA. TIH 84 jnts. PU 1 jnt and tagged @ 2698'. Attempted to latch onto fish and were unable. Make up BHA. TIH 84 jnts. PU 1 jnt and tagged @ 2698'. Made up BHA TIH 84 jnts. PU 1 jnt and tagged @ 2698'. Attempted to latch on and were unsuccessful. TOH std back 84 jnts. LD 1 jnts and BHA. Secured well. Verified well secure SDFN.

3/20/24: BD csg from 50 psi to 0. BH 50 bbls 10# brine down csg. Went on vacuum. Made up BHA (3-3/4 impression block w/2' sub). TIH 84 jnts and PU 1 jnt. Tagged @ 2698'. Set down 4 pts on TOF. TOH 84 jnts. LD 1 jnt and BHA. Made up BHA and TIH 85 jnts. Tagged @ 2698'. Attempted to latch onto fish. Unsuccessful. TOH std back 84 jnts. LD 1 jnt and BHA. Secured well. Verified well secure. SDFN.

3/21/24: BD KW. Pump 60 bbls 10# brine down csg. Went on vacuum. Make up BHA (top bushing, upper ext, OS bowl, XO bushing, 3-3/4 WP dressed to 2-3/8), 8' sub, TIH 84 jnts and tagged TOF @ 2876'. RU PS. Latched on to fish. Pulled 20 pts over neutral. Wait on WLU to arrive from PLU 197Q.

MIRU WLU. RIH w/1.81 GR. Could not make through TOF. POOH. RIH w/1.63 CL could not make it through. POOH. RIH w/1.55 weight bar. Could not make it through. POOH. RDMO WLU. Attempt to pump down tbg. Pumped 9 bbls and pressured up to 1000 psi.

3/22/24: Pumped 45 bbls down csg. Went on vacuum. MIRU WLU. RIH w/1.43 weight bar and tagged @ 2646' (tbg tally 2696'). POOH. RDMO WLU. Attempt to pump down tbg. Pressured up and dropped very slowly. RU PS and attempt to unset TAC. Pulled 60 pts and turned right w/swivel. Worked tbg several times and were unsuccessful. TOH std back 84 jnts. LD 2 subs and BHA. Secured well. Verified well secure. SDFN

3/25/24: BD csg from 200 psi to 0. BH 80 bbls down csg. Went on vacuum. Make up BHA, TIH BHA and 84 jnts. Got on fish. Warmed up jars. Worked tbg. Jarred and got loose on bottom. Dragging 44 pts up hole. TOH LD tbg 20 jnts. Started dragging 61 pts. Believe we may have some scale or TAC is hanging up. TOH Std LD 4 jnts. Std back 64 jnts. LD BHA and 1 jnt. Secured well. Verified well secure. SDFN

3/26/24: BD csg from 50 psi to 0. KW. Pumped 60 bbls 10# brine down tbg. TOH LD 183 jnts, TAC, seat nipple, 4 jnts, perforated sub and bull plug. Wait on WLU. WLU was getting inspected by XTO QA/QC @ TWG yard. MIRU WLU. RIH w/GRJB to 7570' (3.50 GR). POOH. RIH w/3.42 CIBP and set @ 7548' due to collar @ 7538. POOH. RDMO WLU. TIH 56 jnts. Secured well. Verified well secure. SDFN.

3/27/24: BD csg from 40 psi to 0 and tbg from 20 psi to 0. BH 50 bbls 10# brine down tbg. Went on vacuum. Tally, PU tbg and TIH 180 jnts, total 236 jnts. (tagged CIBP @ 7536') tbg avg 31.84'. EOT @ 7533'. 28 bbls 10# brine. Swapped to Class H CMT and spotted over CIBP. (6.25 bbls FW mix, FOF 607', Slurry vol 9.43, CTOC 6933'). Displaced w/26.75 bbls 10# brine. TOH std back 204 jnts and LD 32 jnts. WOC. Class H CMT. MIRU WLU during WOC. RIH TTOC @ 6798'. SET CIBP @ 6495'. Tag top of CIBP. POOH. RDMO WLU. Secure well. Verify well secure. SDFN

3/28/24: TIH 203 jnts and 20' 204. Tagged CIBP @ 6478' w/tbg. Load w/100 bbls Salt gel mud (25 sks). PT CIBP to 500 psi for 30 minutes. PT good. Spotted 25 sks Class C CMT (3.75 bbls FW mix, 5.87 Slurry vol, CTOC 6117'). Displaced w/25.5 bbls 10# brine. WOC. TIH 18 jnts (total in hole to tag 191) and tagged @ 6081'. TOH LD 82 jnts. (EOT @ 3470). Spot 30 sks Class c CMT (FW mix 4 bbls, Slurry vol 7.05, FOF 453', CTOC 3024'). TOH LD 109 jnts. (no tbg in the hole.). Secured well. Verified well secure. SDFN.

3/29/24: Wait on WLU. MIRU WLU. RIH and TTOC @ 3044'. Log coming out the hole. RDMO WLU. MIRU Brigade WLU. RIH TTOC @ 3044' and perf @ 3043'. RDMO WLU. Put 1000 psi on csg. Held firm. PU 79 jnts and 16 jnts from derrick and TIH to EOT @ 3031'. Spotted 20 sks Class C CMT (FW mix 3 bbls, Slurry vol 4.70 bbls, FOF 302', CTOC 2745'). Displaced w/10.5 bbls 10# brine. TOH 40 jnts. Reversed out 22 bbls 10# brine. Secured well. Verified well secure. SDFN.

4/1/24: TOH and LD 35 jnts. MIRU WLU. RIH TTOC @ 2708'. PUH and perf @ 925'. RDMO WLU. Put 500 psi. No movement from glove, released pressure to pit. TOH LD 20 jnts. Pumped 48 bbls 10# brine @ 2bpm got 1000 psi. Pumped 1 bbl down intermediate and got 500 psi. Shutdown and released psi. Pumped 1 bbls got 1000 psi. Held steady. Shutdown and released psi. Shutdown due to wind. Secured well. Verified well secure. SDFN.

4/2/24: Perf @ 350'. SD due to bad tbg line on rig. NPT. Tbg line replaced. SDFN.

4/3/24: Sqz CMT to 366'. WOC Sqz to surface. Rig crew has 1 RS, 1 RO, 1 DH and 2 FH.

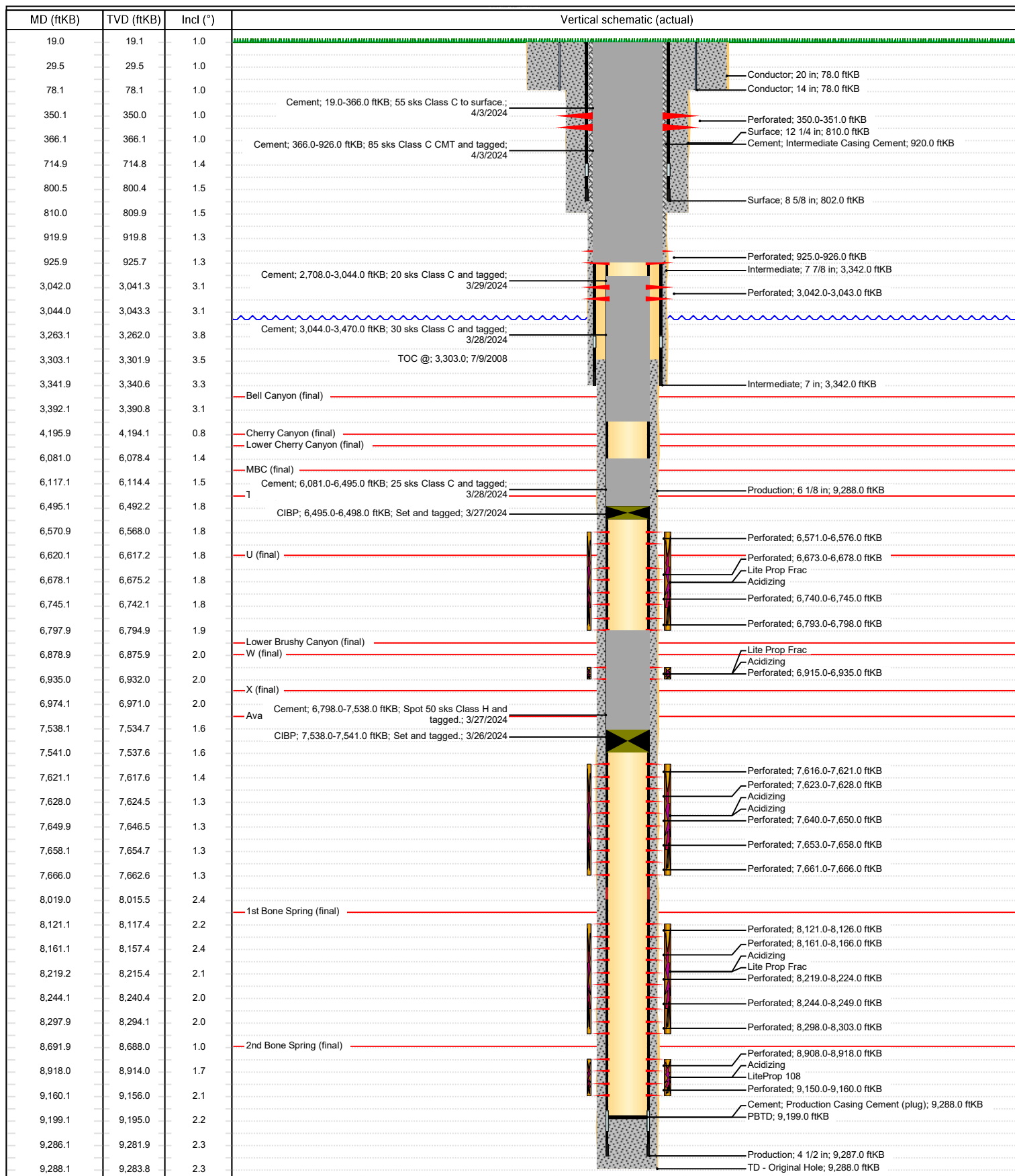
4/9/24: Cut off WH & install DHM.



Schematic - Vertical with Perfs

Well Name: Poker Lake Unit 274

API/UWI 3001535138	SAP Cost Center ID 1138412001	Permit Number	State/Province New Mexico	County Eddy
Surface Location T24S-R29E-S12	Spud Date 6/4/2008 18:45	Original KB Elevation (ft) 3,129.80	Ground Elevation (ft) 3,110.70	KB-Ground Distance (ft) 19.10



District I
1625 N. French Dr., Hobbs, NM 88240
Phone:(575) 393-6161 Fax:(575) 393-0720
District II
811 S. First St., Artesia, NM 88210
Phone:(575) 748-1283 Fax:(575) 748-9720
District III
1000 Rio Brazos Rd., Aztec, NM 87410
Phone:(505) 334-6178 Fax:(505) 334-6170
District IV
1220 S. St Francis Dr., Santa Fe, NM 87505
Phone:(505) 476-3470 Fax:(505) 476-3462

State of New Mexico
Energy, Minerals and Natural Resources
Oil Conservation Division
1220 S. St Francis Dr.
Santa Fe, NM 87505

CONDITIONS

Action 337552

CONDITIONS

Operator: XTO PERMIAN OPERATING LLC. 6401 HOLIDAY HILL ROAD MIDLAND, TX 79707	OGRID: 373075
	Action Number: 337552
	Action Type: [C-103] Sub. Plugging (C-103P)

CONDITIONS

Created By	Condition	Condition Date
gcordero	well head cut off 4/9/24. CBL in Well File	5/31/2024