



Souder, Miller & Associates ♦ 201 S. Halagueno St. ♦ Carlsbad, NM 88220
(575) 689-8801

May 6, 2024

Oil Conservation Division
1000 Rio Brazos Road
Aztec, NM 87410

SUBJECT: Reclamation Report for the Artesia Metex Unit #019, Eddy County, New Mexico

1.0 Introduction

On behalf of the New Mexico Energy, Minerals and Natural Resources Department, Oil Conservation Division (OCD), Souder, Miller and Associates (SMA) has prepared five separate Reclamation Reports that describe the reclamation of the land related to oil and gas production activities at the Artesia Metex (AM) Units. The project area consists of five Unit Locations: AM #005, AM #006, AM #017, AM #018, and AM #019, all located on private land approximately 12 miles southeast of Artesia, within Eddy County, New Mexico. All five well locations have been plugged and abandoned, though residual equipment, piping, and debris remained on site.

This Reclamation Report details reclamation activities for AM Unit #019, located in Unit Letter O, Section 24, Township 18S, Range 27E, (32.72641, -104.22887) Eddy County, New Mexico. A summary of the site is detailed in Table 1.

Table 1. Summary of Artesia Metex Unit				
Site Name (Type of Well)	API	Surface Location Latitude, Longitude	Plug and Abandonment Date	Notes (Pre-Reclamation, per OCD)
Artesia Metex Unit #019 (Oil)	30-015-00946	Unit O, S24, T18S, R27E 32.72641, -104.22887	8/27/2018	Suspected former pit, no environmental orders, visible non- reportable operational staining, piping, unvegetated area, cement washout area, electrical panel/telephone pole

2.0 Site Background and Information

Artesia Metex Unit #019 is located approximately 12 miles southeast of Artesia, NM on private land at an elevation of approximately 3,574 feet above mean sea level (amsl). This unit was plugged and abandoned on August 27, 2018.

3.0 Reclamation Activities

Initial site activities included marking the site for a New Mexico One Call (811) to be performed, and an overview of the site. Marking for the 811 was conducted on January 1, 2024, with 811 activities commencing in the days

Artesia Metex Unit #019 Reclamation Report

May 6, 2024

following. The initial overview of the site indicated that electrical equipment had been found on site, but upon further inspection, the equipment was not connected to power.

NORM Assessment

Following the initial inspection of the site, a Naturally Occurring Radioactive Material (NORM) assessment of the residual petroleum production infrastructure was performed on January 8, and January 9, 2024. This assessment was performed to determine if equipment and flowlines left after the cessation of production activities measured NORM readings greater than the disposal threshold of 50 microroentgens per hour (mR/hr) (20.3.14.1403 NMAC). The NORM assessment was performed using a Geiger counter with a scintillometer probe. All equipment of similar NORM reading and size, namely already cut cable wire, T-posts, or fencing wire, were marked, and labeled as one. Flowlines were marked, and labeled every 100 ft, as the NORM readings remained fairly stable. A total of 16 readings were performed and catalogued at AM Unit #019. None of the flowlines or equipment exceeded the disposal threshold. The highest exposure rate observed was 1,700 counts per minute (cpm), or 9.71 mR/hr.

All NORM values and equipment locations can be found in the field notes and photographic log in Appendix B. The Geiger counter calibration record is included in Appendix E.

Polyline Flushing, Scrap Removal, and Surface Scraping

SMA and J&H Services, Inc (J&H) met onsite on February 26, 2024, to begin initial reclamation activities, starting with a surface scrape of the operationally stained areas around the wellhead, and collection of scrap metal and debris within the area. They took all scrap metal to Sandpoint Landfill, a landfill maintained by Eddy County.

On February 28, 2024, the crew utilized a freshwater truck and vacuum truck to flush the polyline, estimated at 4,000 feet across all five sites. The freshwater truck was connected to the polyline at AM Unit #019 and used to the line to the vacuum truck located at AM Unit #005. Approximately 50 barrels (bbls) of freshwater were pumped into the polyline, and approximately 60 bbls of liquid were flushed out of the polyline, indicating there was approximately 10 bbls of petroleum product still in the line.

On February 29, 2024, J&H pulled the flushed polyline to AM Unit #018. AM Unit #018 was used as a consolidation location for all five of the Artesia Metex locations for polyline cutting and loading prior to removal and disposal. During flushing, cutting, and loading of the polyline, residual flush water leaked onto the pad and road areas of AM Unit #018. The subsequent soil was scraped with a backhoe and stockpiled with the non-reportable operationally stained soil. On March 1, 2024, J&H completed cutting and loading of all the polyline and began transferring all the scraped soil from AM Unit #019 to AM Unit #018.

On February 29, 2024, approximately 53 cubic yards of non-reportable operationally stained soil from Unit #019 was scraped and temporarily stockpiled. On March 1, 2024, J&H began transferring all the scraped soil from AM Unit #019 to AM Unit #018 for stockpiling. On March 4, 2024, the stockpiled soil was transported to Lea Land LLC, an OCD-permitted surface waste facility, for disposal. Approximately 160 cubic yards of soil were disposed, which included scraped soil from the other AM Units. The surface scraped areas were backfilled with clean, imported material and graded to match the surrounding topography.

Photos of the polyline flushing, scrap metal removal, and surface scraping are included in Appendix B. Copies of the soil waste manifests from Lea Land LLC are included in Appendix D. Sandpoint Landfill did not provide waste manifests for the scrap metal or polylines.

Artesia Metex Unit #019 Reclamation Report

May 6, 2024

Ripping and Seeding

Preparation for tilling and seeding of AM Unit #019 and the corresponding access roads began on March 13, 2024, continuing to March 14, 2024, and included ripping areas with little vegetation. Tilling and seeding of AM Unit #019 and the access roads took place on March 20, 2024. All seeded areas were mulched with straw blankets to promote seed growth by reducing evaporation, weed growth, and erosion. J&H laid straw blankets over the seeded ground on March 20, 2024. Application of the straw blankets to AM Unit #019 and access roads was completed on March 22, 2024. The area of reclamation corresponding with AM Unit #019 totals 29,870 square feet.

Photos of ripping, seeding, and application of the straw blankets are included in Appendix B. The seed mix list can be found in Appendix C.

Drone Sweep

Along with the NORM assessment, on January 9, 2024, SMA performed a drone sweep of the area to get an aerial image prior to reclamation, as shown in Figure 1. Upon completion of reclamation activities, a second drone sweep was completed on April 3, 2024, as shown in Figure 2. Figures 3 and 4 display post-reclamation of the access roads to and from AM Unit #019.

4.0 Scope and Limitations

Reclamation activities for AM Unit #019 began on January 1, 2024, and concluded on March 22, 2024. The scope of our services included: environmental assessment; regulatory liaison; reclamation guidance; and preparation of this report. All work has been performed in accordance with generally accepted professional environmental consulting practices for oil and gas reclamation in the Permian Basin in New Mexico.

This report concludes the reclamation activities at AM Unit #019 under the direction of OCD.

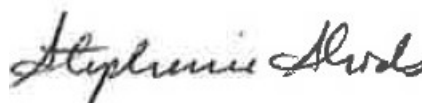
If there are any questions regarding this report, please contact Sarahmay Schlea at (330) 958-5689 or Stephanie Hinds at (505) 793-7079.

Submitted by:
SOUDER, MILLER & ASSOCIATES



Sarahmay Schlea, GIT
Staff Geoscientist

Reviewed by:



Stephanie Hinds, P.E.
Senior Engineer

ATTACHMENTS:

Artesia Metex Unit #019 Reclamation Report

May 6, 2024

Figures:

Figure 1: Aerial Site Map Pre-Reclamation

Figure 2: Aerial Site Map Post-Reclamation

Figure 3: Aerial Access Roads Map Post-Reclamation

Figure 4: Aerial Access Roads Map Post-Reclamation

Appendices:

Appendix A: Correspondence

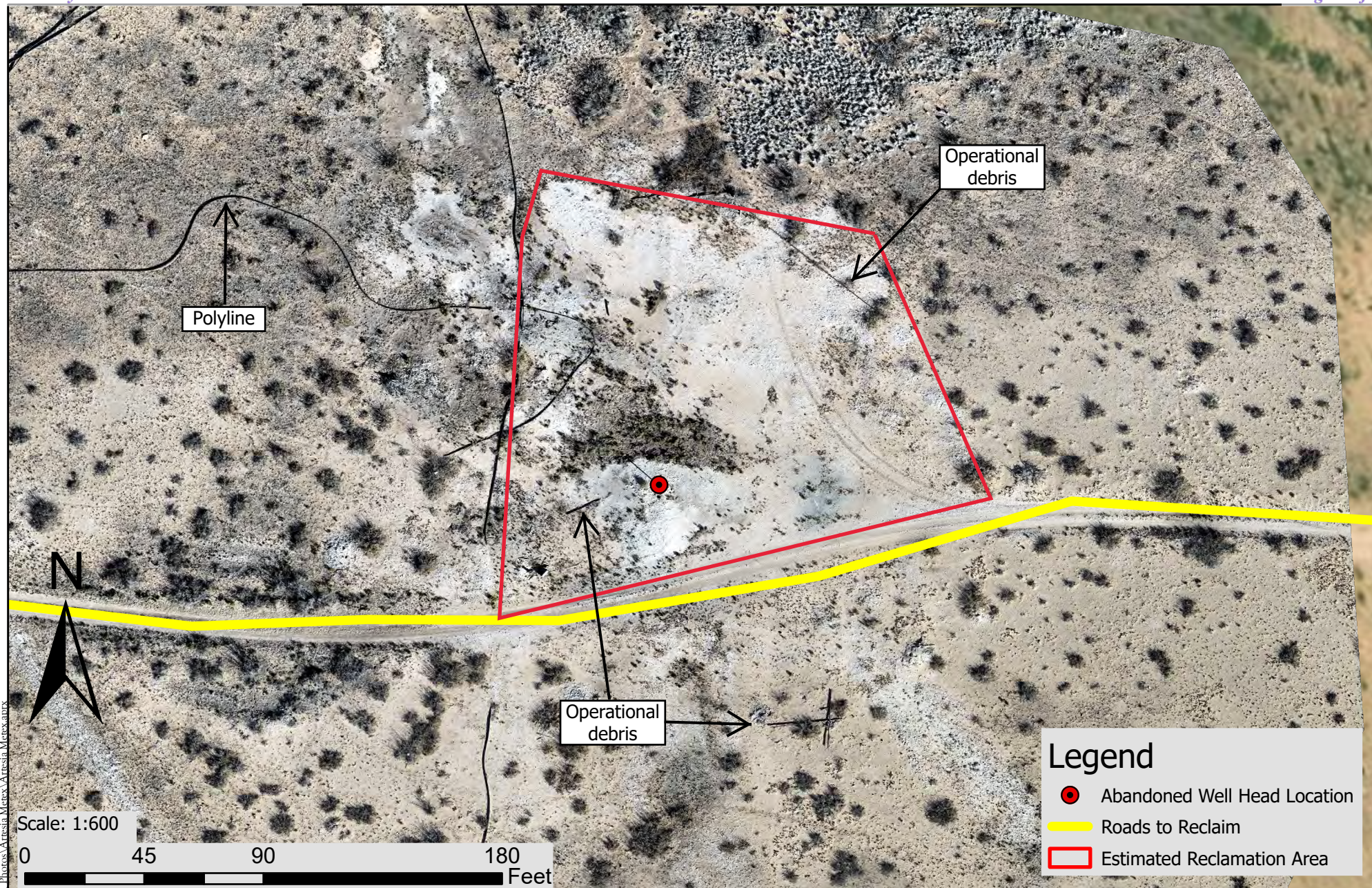
Appendix B: Field Notes and Photographic Log

Appendix C: Seed Mix List

Appendix D: Waste Manifests

Appendix E: Geiger Counter Calibration Record

FIGURES



Legend

- Abandoned Well Head Location
- Roads to Reclaim
- Estimated Reclamation Area

SOUDER, MILLER & ASSOCIATES
 201 S Halagueno St
 Carlsbad, NM 88220



(575) 689-7040

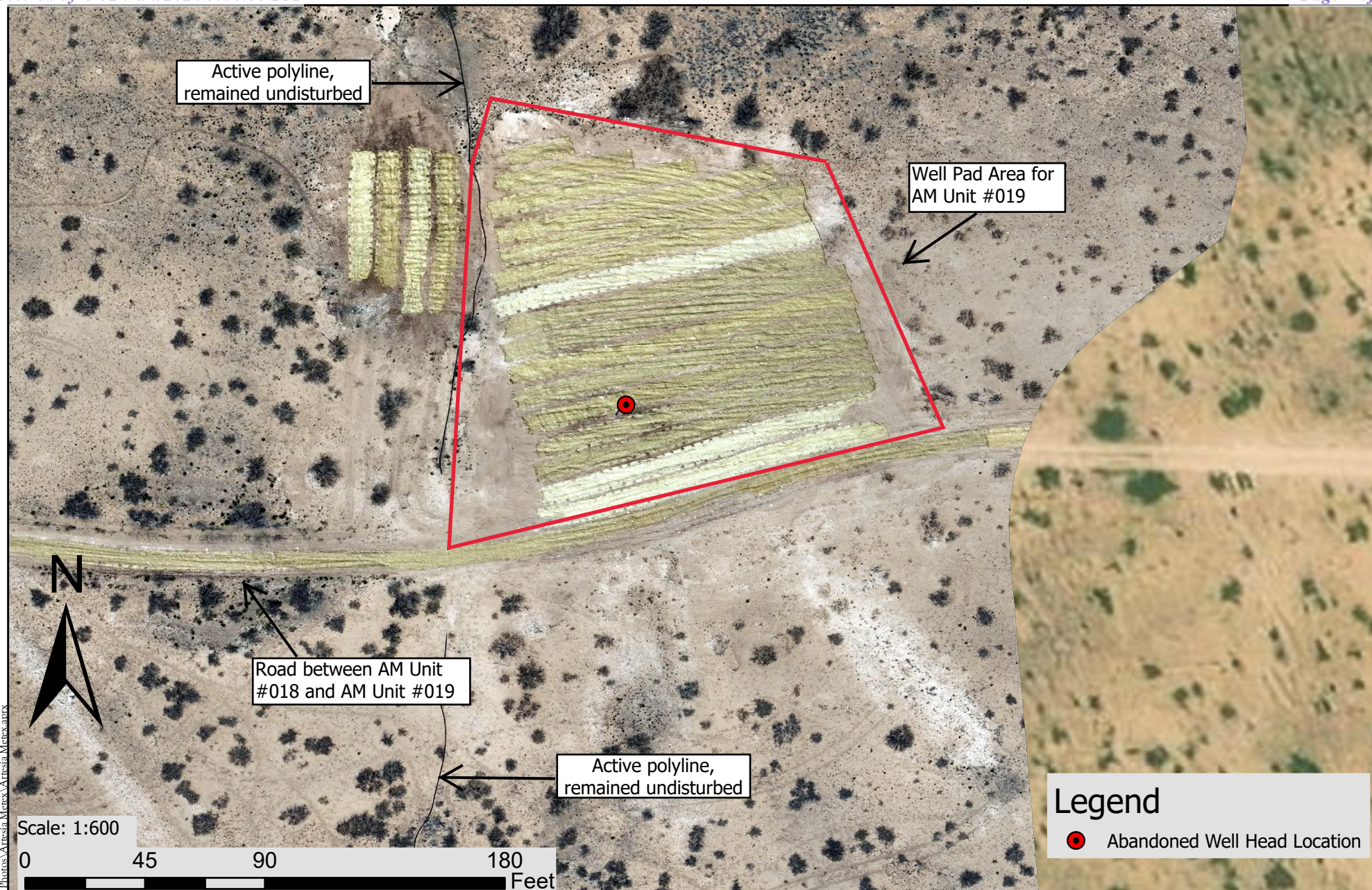
Serving the Southwest & Rocky Mountains
www.soudermiller.com

Site Map

Artesia Metex Unit #019
 Pre-Reclamation and Reseeding

Figure 1

Designed SKS	Drawn SKS	Checked SAH
Date: 4/19/2024		
Scale:		
Project No: 5E31796		
Sheet:		



SOUDER, MILLER & ASSOCIATES

201 S Halagueno St
Carlsbad, NM 88220

(575) 689-7040

Serving the Southwest & Rocky Mountains
www.soudermiller.com

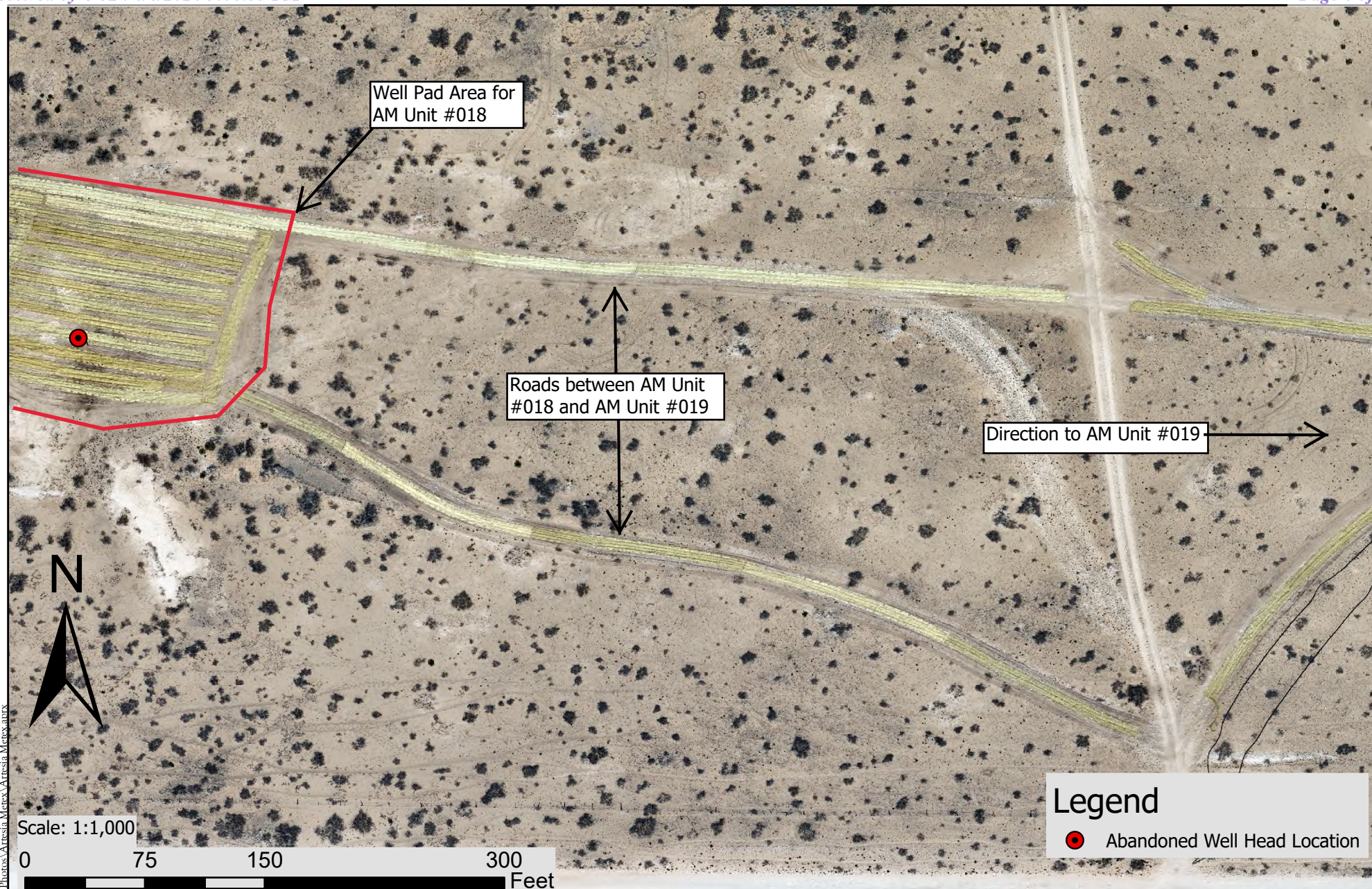


Site Map

Artesia Metex Unit #019
Post - Reclamation and Reseeding

Figure 2

Designed SKS	Drawn SKS	Checked SAH
Date: 4/8/2024		
Scale:		
Project No: 5E31796		
Sheet:		



SOUDER, MILLER & ASSOCIATES

201 S Halagueno St
Carlsbad, NM 88220

(575) 689-7040

Serving the Southwest & Rocky Mountains
www.soudermiller.com

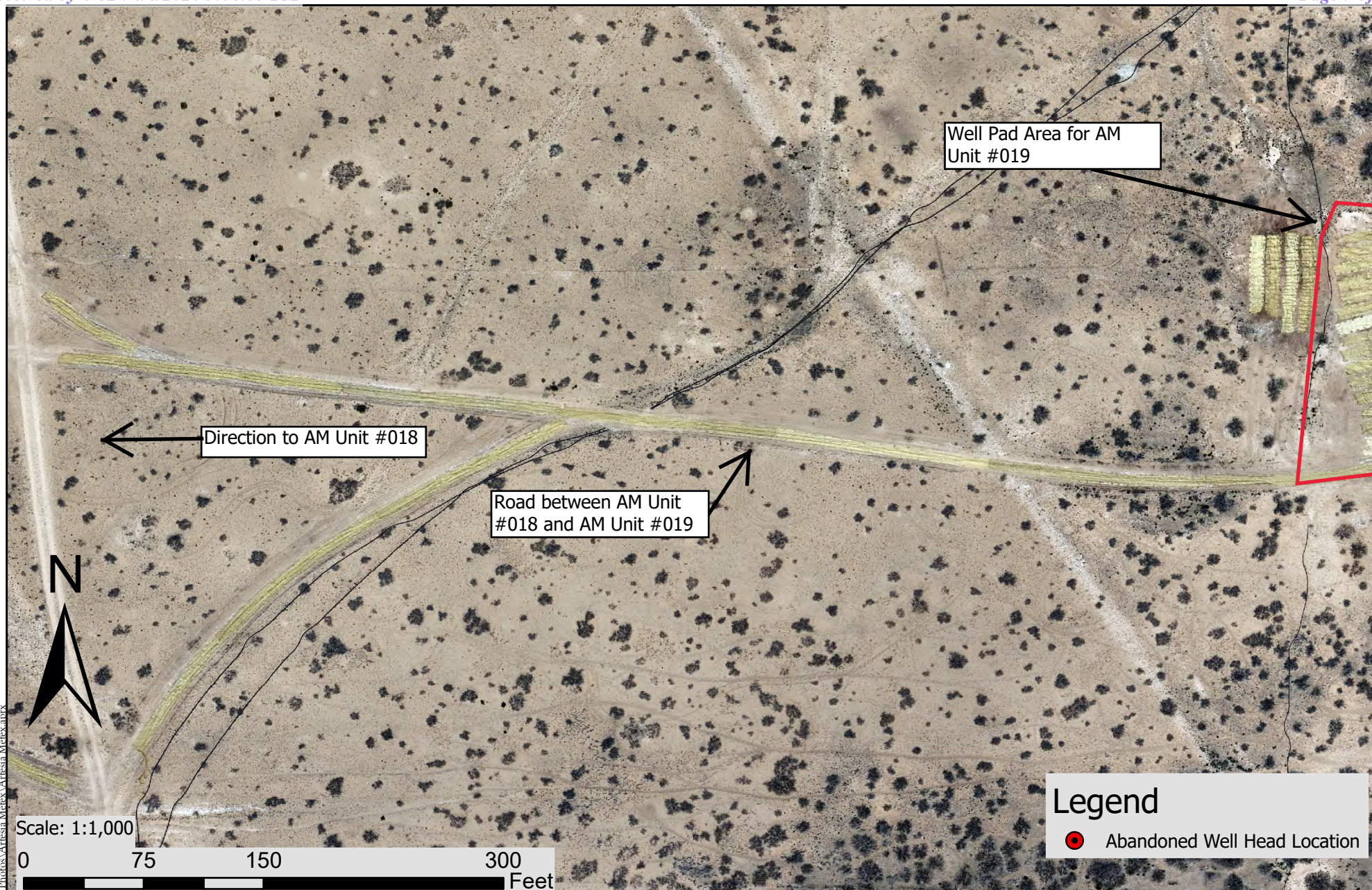


Site Map

Artesia Metex Unit #018
Road Between AM 018 to AM 019
Post - Reclamation and Reseeding

Figure 3

Designed SKS	Drawn SKS	Checked SAH
Date: 4/8/2024		
Scale:		
Project No: 5E31796		
Sheet:		



SOUDER, MILLER & ASSOCIATES

201 S Halagueno St
Carlsbad, NM 88220

(575) 689-7040

Serving the Southwest & Rocky Mountains
www.soudermiller.com



Site Map

Artesia Metex Unit #019
Road Between AM 018 to AM 019
Post - Reclamation and Reseeding

Figure 4

Designed SKS	Drawn SKS	Checked SAH
-----------------	--------------	----------------

Date: 4/8/2024

Scale:

Project No: 5E31796

Sheet:

APPENDIX A: CORRESPONDENCE

From: [Maxwell, Ashley, EMNRD](#)
To: [Stephanie Hinds](#)
Cc: [Smith, Cory, EMNRD](#); [Hall, Brittany, EMNRD](#); [Scott McKittrick](#); [Reid Allan](#)
Subject: [EXTERNAL]Artesia Metex Seeding Mix and NORM Surveying
Date: Monday, September 25, 2023 9:29:22 AM
Attachments: [Seed Mix.kmz](#)
[Turkey Track ROW Seed Mix.pdf](#)

Good Morning Steph,

We are working with the Artesia Metex surface owner, Conoco, on the preferred seeding mix. I have attached a KMZ file that details where the preferred seed mix is used. I am also including a pdf file of the preferred seed mix. I will handle the communication with Conoco. If you have any questions for them, please send them to me.

As far as NORM surveying is concerned, we received some additional guidance from NMED. In your report, provide all calibration records for the equipment that you will be using. Include a site map, identifying the equipment surveyed and the corresponding equipment readouts. If the equipment reads in picocuries per minute, also include the conversion for picocuries per hour. Also, include pictures of the equipment surveyed.

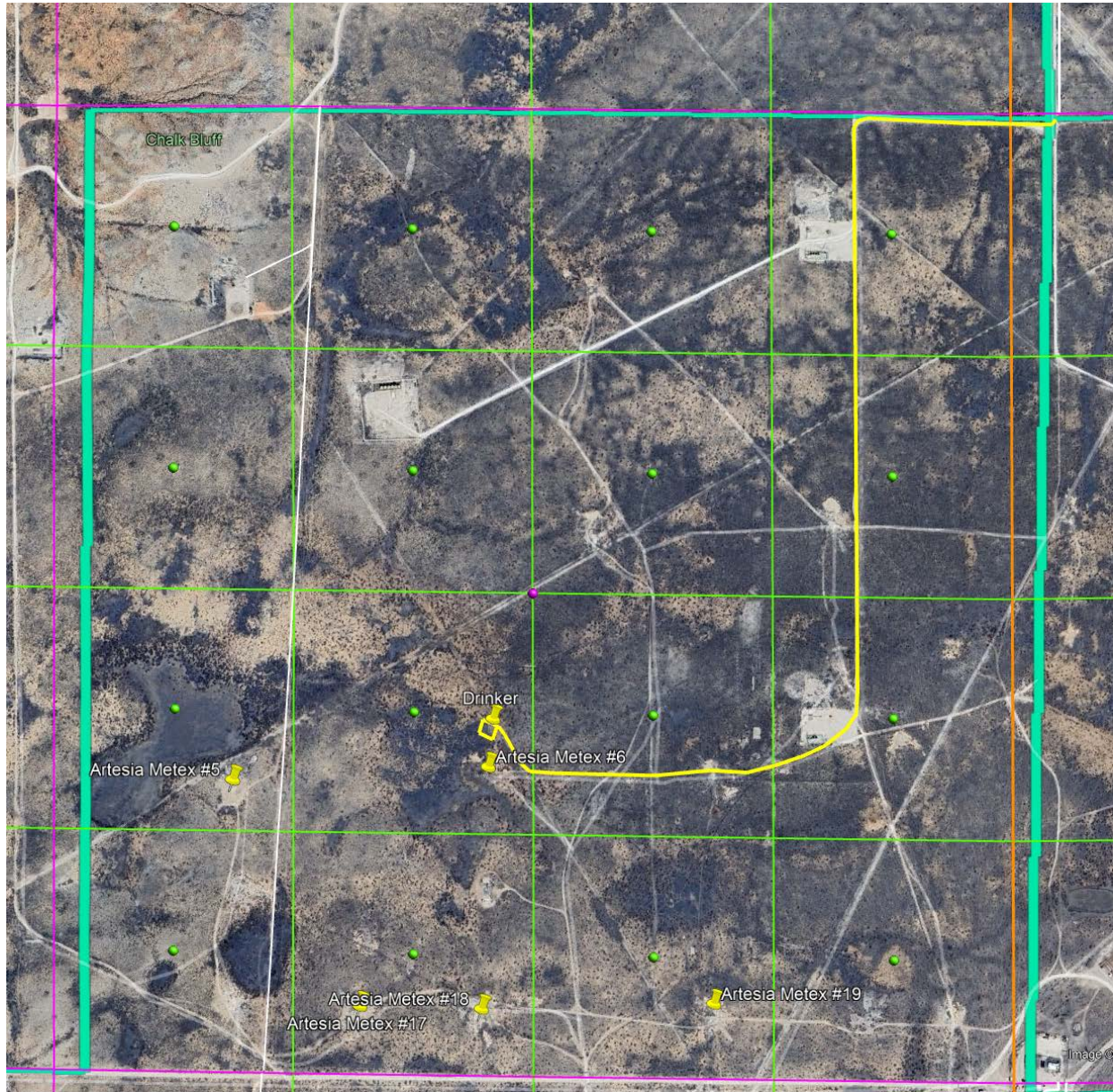
Prior to work starting, let's set up a meeting to establish a timeline and to answer any questions.

Ashley Maxwell • Environmental Specialist
Environmental Bureau Projects Group
EMNRD - Oil Conservation Division
1000 Rio Brazos Road | Aztec, NM 87110
505.635.5000 | Ashley.Maxwell@emnrd.nm.gov
<http://www.emnrd.state.nm.us/OCD/>

From: Maxwell, Ashley, EMNRD
To: Stephanie Hinds; Reid Allan
Cc: Smith, Cory, EMNRD; Hall, Brittany, EMNRD; Walker, Crystal, EMNRD
Subject: [EXTERNAL]Artesia Metex Land Owner Request
Date: Friday, February 16, 2024 11:54:34 AM
Attachments: image001.png
Importance: High

Steph,

Per the land owner, **DO NOT** disturb the yellow highlighted road below:



Ashley Maxwell • Environmental Specialist
Environmental Bureau Projects Group
EMNRD - Oil Conservation Division
1000 Rio Brazos Road | Aztec, NM 87110
505.635.5000 | Ashley.Maxwell@emnrd.nm.gov
<http://www.emnrd.state.nm.us/OCD/>

Please be advised that the new Digital C-141 is live as of December 1, 2023. Please review the new Digital C-141 submission Dec 1, 2023 Guidance document posted on the EMNRD Website prior to submitting any C-141s. The guidance documents can be found at <https://www.emnrd.nm.gov/ocd/ocd-announcements-and-notifications/> or <https://www.emnrd.nm.gov/ocd/ocd-forms/>.

From: [Maxwell, Ashley, EMNRD](#)
To: [Stephanie Hinds](#); [Reid Allan](#)
Subject: FW: [EXTERNAL] Google Earth Placemark: Seed Mix.kmz
Date: Friday, February 16, 2024 11:53:41 AM
Attachments: [Needed ROAD.kmz](#)

Steph, please see the email below from Brian Hall. Keep a copy of this email on site for your records. I am following up with a their request regarding the Drinker road.

Ashley Maxwell • Environmental Specialist
Environmental Bureau Projects Group
EMNRD - Oil Conservation Division
1000 Rio Brazos Road | Aztec, NM 87110
505.635.5000 | Ashley.Maxwell@emnrd.nm.gov
<http://www.emnrd.state.nm.us/OCD/>

Please be advised that the new Digital C-141 is live as of December 1, 2023. Please review the new Digital C-141 submission Dec 1, 2023 Guidance document posted on the EMNRD Website prior to submitting any C-141s. The guidance documents can be found at <https://www.emnrd.nm.gov/ocd/ocd-announcements-and-notifications/> or <https://www.emnrd.nm.gov/ocd/ocd-forms/>.

From: Hall, Brian <Brian.Hall@conocophillips.com>
Sent: Friday, February 16, 2024 11:46 AM
To: Smith, Cory, EMNRD <cory.smith@emnrd.nm.gov>
Cc: Sitka, Brooks <Brooks.Sitka@conocophillips.com>; Jonnes, Ryan <Ryan.Jonnes@conocophillips.com>; Sellers, Joshua E <Joshua.E.Sellers@conocophillips.com>; Valdez, Dani <Dani.Valdez@conocophillips.com>; Wood, Jesse <Jesse.Wood@conocophillips.com>; Maxwell, Ashley, EMNRD <Ashley.Maxwell@emnrd.nm.gov>; Hall, Brittany, EMNRD <Brittany.Hall@emnrd.nm.gov>; Walker, Crystal, EMNRD <Crystal.Walker@emnrd.nm.gov>
Subject: RE: [EXTERNAL] Google Earth Placemark: Seed Mix.kmz

Cory-

We have a drinker just north of the AM#6. We are requesting that the drinker is not disturbed and the road outlined in the attached .kmz remains in place.

Outside of that, you have permission to start the reclamation process.

Regards,

Brian Hall, MBA, CPL | Senior Surface Land Negotiator | Permian Non-OP Surface Land |
ConocoPhillips

C: 432-638-8932 | **O:** 432-688-6913 | 600 W. Illinois Ave, 1CC-934, Midland, Texas 79701

APPENDIX B: FIELD NOTES AND PHOTOGRAPHIC LOG

SUBJECT NORM SWEEP

PROJECT Artesia Muter

PAGE 1 of 1

CLIENT NMOC.

DATE 01/08/24

BY SS

CHECKED

BY

General field notes:

Weather: hi ~46, high winds ~ 30-40 mph; ^{high} wind warning
Erin arrived onsite @ Artesia Muter Unit #005 @ ~0900
Sarahman arrived onsite @ ~0915.

Gathered equipment; PID x2, 4-gas monitor x2, geiger counter, gps.

watched a brief video on how to work the geiger counter & ran a quick test to ensure proper functioning.

signed ~~some~~ HASP & JHA/JSA and began work @ ~1000.

Geiger Counter: model 3 serial # 83222

~~some~~ → w/ high winds, we could not reasonably ~~fly~~ fly the drone, will try again tomorrow.

no readings on geiger counter above 2500 cpm (~14.29 μ R/hr)
→ counter was set @ x1 scale.

ran a quick test w/ the drone's software to see general length of time it would take to fly the area under optimal conditions.

left site @ ~1135

SUBJECT NORM Sweep & Drone Imaging

PROJECT Artesia Metex

PAGE 1 of 1

CLIENT

DATE 01/09/2024

BY SS

CHECKED

BY

General field notes:

weather: hi ~55, morning temp ~35, winds ~10-15 mph

Erin arrived onsite @ Artesia Metex unit #0005 @ ~0800

Sarahmay arrived onsite @ ~0830

@ 0830

Erin was working on getting the drone in the air for the aerial photography. The whole Metex reclamation area is large enough that the drone might need a battery recharge part way through.

→ the battery last around 20 min and the program said the flight would take 20 min, but with lift off, return, and landing it would likely take longer than 20 min.

@ 0830 → signed daily JHA/JSA and then had drone lift off. waited for the Drone to finish.

→ ~0900 the drone's battery died and needed recharging before it could finish its flight.

instead of waiting for the battery to recharge, we plugged it in and then went and finished the NORM sweep.

NORM sweep notes on the field log for each individual site ~~(0001)~~
~~0002~~ ~~0003~~ ~~0004~~ ~~0005~~ ~~0006~~ ~~0007~~ ~~0008~~ ~~0009~~ ~~0010~~ ~~0011~~ ~~0012~~ ~~0013~~ ~~0014~~ ~~0015~~ ~~0016~~ ~~0017~~ ~~0018~~ ~~0019~~ ~~0020~~ ~~0021~~ ~~0022~~ ~~0023~~ ~~0024~~ ~~0025~~ ~~0026~~ ~~0027~~ ~~0028~~ ~~0029~~ ~~0030~~ ~~0031~~ ~~0032~~ ~~0033~~ ~~0034~~ ~~0035~~ ~~0036~~ ~~0037~~ ~~0038~~ ~~0039~~ ~~0040~~ ~~0041~~ ~~0042~~ ~~0043~~ ~~0044~~ ~~0045~~ ~~0046~~ ~~0047~~ ~~0048~~ ~~0049~~ ~~0050~~ ~~0051~~ ~~0052~~ ~~0053~~ ~~0054~~ ~~0055~~ ~~0056~~ ~~0057~~ ~~0058~~ ~~0059~~ ~~0060~~ ~~0061~~ ~~0062~~ ~~0063~~ ~~0064~~ ~~0065~~ ~~0066~~ ~~0067~~ ~~0068~~ ~~0069~~ ~~0070~~ ~~0071~~ ~~0072~~ ~~0073~~ ~~0074~~ ~~0075~~ ~~0076~~ ~~0077~~ ~~0078~~ ~~0079~~ ~~0080~~ ~~0081~~ ~~0082~~ ~~0083~~ ~~0084~~ ~~0085~~ ~~0086~~ ~~0087~~ ~~0088~~ ~~0089~~ ~~0090~~ ~~0091~~ ~~0092~~ ~~0093~~ ~~0094~~ ~~0095~~ ~~0096~~ ~~0097~~ ~~0098~~ ~~0099~~ ~~0100~~ ~~0101~~ ~~0102~~ ~~0103~~ ~~0104~~ ~~0105~~ ~~0106~~ ~~0107~~ ~~0108~~ ~~0109~~ ~~0110~~ ~~0111~~ ~~0112~~ ~~0113~~ ~~0114~~ ~~0115~~ ~~0116~~ ~~0117~~ ~~0118~~ ~~0119~~ ~~0120~~ ~~0121~~ ~~0122~~ ~~0123~~ ~~0124~~ ~~0125~~ ~~0126~~ ~~0127~~ ~~0128~~ ~~0129~~ ~~0130~~ ~~0131~~ ~~0132~~ ~~0133~~ ~~0134~~ ~~0135~~ ~~0136~~ ~~0137~~ ~~0138~~ ~~0139~~ ~~0140~~ ~~0141~~ ~~0142~~ ~~0143~~ ~~0144~~ ~~0145~~ ~~0146~~ ~~0147~~ ~~0148~~ ~~0149~~ ~~0150~~ ~~0151~~ ~~0152~~ ~~0153~~ ~~0154~~ ~~0155~~ ~~0156~~ ~~0157~~ ~~0158~~ ~~0159~~ ~~0160~~ ~~0161~~ ~~0162~~ ~~0163~~ ~~0164~~ ~~0165~~ ~~0166~~ ~~0167~~ ~~0168~~ ~~0169~~ ~~0170~~ ~~0171~~ ~~0172~~ ~~0173~~ ~~0174~~ ~~0175~~ ~~0176~~ ~~0177~~ ~~0178~~ ~~0179~~ ~~0180~~ ~~0181~~ ~~0182~~ ~~0183~~ ~~0184~~ ~~0185~~ ~~0186~~ ~~0187~~ ~~0188~~ ~~0189~~ ~~0190~~ ~~0191~~ ~~0192~~ ~~0193~~ ~~0194~~ ~~0195~~ ~~0196~~ ~~0197~~ ~~0198~~ ~~0199~~ ~~0200~~ ~~0201~~ ~~0202~~ ~~0203~~ ~~0204~~ ~~0205~~ ~~0206~~ ~~0207~~ ~~0208~~ ~~0209~~ ~~0210~~ ~~0211~~ ~~0212~~ ~~0213~~ ~~0214~~ ~~0215~~ ~~0216~~ ~~0217~~ ~~0218~~ ~~0219~~ ~~0220~~ ~~0221~~ ~~0222~~ ~~0223~~ ~~0224~~ ~~0225~~ ~~0226~~ ~~0227~~ ~~0228~~ ~~0229~~ ~~0230~~ ~~0231~~ ~~0232~~ ~~0233~~ ~~0234~~ ~~0235~~ ~~0236~~ ~~0237~~ ~~0238~~ ~~0239~~ ~~0240~~ ~~0241~~ ~~0242~~ ~~0243~~ ~~0244~~ ~~0245~~ ~~0246~~ ~~0247~~ ~~0248~~ ~~0249~~ ~~0250~~ ~~0251~~ ~~0252~~ ~~0253~~ ~~0254~~ ~~0255~~ ~~0256~~ ~~0257~~ ~~0258~~ ~~0259~~ ~~0260~~ ~~0261~~ ~~0262~~ ~~0263~~ ~~0264~~ ~~0265~~ ~~0266~~ ~~0267~~ ~~0268~~ ~~0269~~ ~~0270~~ ~~0271~~ ~~0272~~ ~~0273~~ ~~0274~~ ~~0275~~ ~~0276~~ ~~0277~~ ~~0278~~ ~~0279~~ ~~0280~~ ~~0281~~ ~~0282~~ ~~0283~~ ~~0284~~ ~~0285~~ ~~0286~~ ~~0287~~ ~~0288~~ ~~0289~~ ~~0290~~ ~~0291~~ ~~0292~~ ~~0293~~ ~~0294~~ ~~0295~~ ~~0296~~ ~~0297~~ ~~0298~~ ~~0299~~ ~~0300~~ ~~0301~~ ~~0302~~ ~~0303~~ ~~0304~~ ~~0305~~ ~~0306~~ ~~0307~~ ~~0308~~ ~~0309~~ ~~0310~~ ~~0311~~ ~~0312~~ ~~0313~~ ~~0314~~ ~~0315~~ ~~0316~~ ~~0317~~ ~~0318~~ ~~0319~~ ~~0320~~ ~~0321~~ ~~0322~~ ~~0323~~ ~~0324~~ ~~0325~~ ~~0326~~ ~~0327~~ ~~0328~~ ~~0329~~ ~~0330~~ ~~0331~~ ~~0332~~ ~~0333~~ ~~0334~~ ~~0335~~ ~~0336~~ ~~0337~~ ~~0338~~ ~~0339~~ ~~0340~~ ~~0341~~ ~~0342~~ ~~0343~~ ~~0344~~ ~~0345~~ ~~0346~~ ~~0347~~ ~~0348~~ ~~0349~~ ~~0350~~ ~~0351~~ ~~0352~~ ~~0353~~ ~~0354~~ ~~0355~~ ~~0356~~ ~~0357~~ ~~0358~~ ~~0359~~ ~~0360~~ ~~0361~~ ~~0362~~ ~~0363~~ ~~0364~~ ~~0365~~ ~~0366~~ ~~0367~~ ~~0368~~ ~~0369~~ ~~0370~~ ~~0371~~ ~~0372~~ ~~0373~~ ~~0374~~ ~~0375~~ ~~0376~~ ~~0377~~ ~~0378~~ ~~0379~~ ~~0380~~ ~~0381~~ ~~0382~~ ~~0383~~ ~~0384~~ ~~0385~~ ~~0386~~ ~~0387~~ ~~0388~~ ~~0389~~ ~~0390~~ ~~0391~~ ~~0392~~ ~~0393~~ ~~0394~~ ~~0395~~ ~~0396~~ ~~0397~~ ~~0398~~ ~~0399~~ ~~0400~~ ~~0401~~ ~~0402~~ ~~0403~~ ~~0404~~ ~~0405~~ ~~0406~~ ~~0407~~ ~~0408~~ ~~0409~~ ~~0410~~ ~~0411~~ ~~0412~~ ~~0413~~ ~~0414~~ ~~0415~~ ~~0416~~ ~~0417~~ ~~0418~~ ~~0419~~ ~~0420~~ ~~0421~~ ~~0422~~ ~~0423~~ ~~0424~~ ~~0425~~ ~~0426~~ ~~0427~~ ~~0428~~ ~~0429~~ ~~0430~~ ~~0431~~ ~~0432~~ ~~0433~~ ~~0434~~ ~~0435~~ ~~0436~~ ~~0437~~ ~~0438~~ ~~0439~~ ~~0440~~ ~~0441~~ ~~0442~~ ~~0443~~ ~~0444~~ ~~0445~~ ~~0446~~ ~~0447~~ ~~0448~~ ~~0449~~ ~~0450~~ ~~0451~~ ~~0452~~ ~~0453~~ ~~0454~~ ~~0455~~ ~~0456~~ ~~0457~~ ~~0458~~ ~~0459~~ ~~0460~~ ~~0461~~ ~~0462~~ ~~0463~~ ~~0464~~ ~~0465~~ ~~0466~~ ~~0467~~ ~~0468~~ ~~0469~~ ~~0470~~ ~~0471~~ ~~0472~~ ~~0473~~ ~~0474~~ ~~0475~~ ~~0476~~ ~~0477~~ ~~0478~~ ~~0479~~ ~~0480~~ ~~0481~~ ~~0482~~ ~~0483~~ ~~0484~~ ~~0485~~ ~~0486~~ ~~0487~~ ~~0488~~ ~~0489~~ ~~0490~~ ~~0491~~ ~~0492~~ ~~0493~~ ~~0494~~ ~~0495~~ ~~0496~~ ~~0497~~ ~~0498~~ ~~0499~~ ~~0500~~ ~~0501~~ ~~0502~~ ~~0503~~ ~~0504~~ ~~0505~~ ~~0506~~ ~~0507~~ ~~0508~~ ~~0509~~ ~~0510~~ ~~0511~~ ~~0512~~ ~~0513~~ ~~0514~~ ~~0515~~ ~~0516~~ ~~0517~~ ~~0518~~ ~~0519~~ ~~0520~~ ~~0521~~ ~~0522~~ ~~0523~~ ~~0524~~ ~~0525~~ ~~0526~~ ~~0527~~ ~~0528~~ ~~0529~~ ~~0530~~ ~~0531~~ ~~0532~~ ~~0533~~ ~~0534~~ ~~0535~~ ~~0536~~ ~~0537~~ ~~0538~~ ~~0539~~ ~~0540~~ ~~0541~~ ~~0542~~ ~~0543~~ ~~0544~~ ~~0545~~ ~~0546~~ ~~0547~~ ~~0548~~ ~~0549~~ ~~0550~~ ~~0551~~ ~~0552~~ ~~0553~~ ~~0554~~ ~~0555~~ ~~0556~~ ~~0557~~ ~~0558~~ ~~0559~~ ~~0560~~ ~~0561~~ ~~0562~~ ~~0563~~ ~~0564~~ ~~0565~~ ~~0566~~ ~~0567~~ ~~0568~~ ~~0569~~ ~~0570~~ ~~0571~~ ~~0572~~ ~~0573~~ ~~0574~~ ~~0575~~ ~~0576~~ ~~0577~~ ~~0578~~ ~~0579~~ ~~0580~~ ~~0581~~ ~~0582~~ ~~0583~~ ~~0584~~ ~~0585~~ ~~0586~~ ~~0587~~ ~~0588~~ ~~0589~~ ~~0590~~ ~~0591~~ ~~0592~~ ~~0593~~ ~~0594~~ ~~0595~~ ~~0596~~ ~~0597~~ ~~0598~~ ~~0599~~ ~~0600~~ ~~0601~~ ~~0602~~ ~~0603~~ ~~0604~~ ~~0605~~ ~~0606~~ ~~0607~~ ~~0608~~ ~~0609~~ ~~0610~~ ~~0611~~ ~~0612~~ ~~0613~~ ~~0614~~ ~~0615~~ ~~0616~~ ~~0617~~ ~~0618~~ ~~0619~~ ~~0620~~ ~~0621~~ ~~0622~~ ~~0623~~ ~~0624~~ ~~0625~~ ~~0626~~ ~~0627~~ ~~0628~~ ~~0629~~ ~~0630~~ ~~0631~~ ~~0632~~ ~~0633~~ ~~0634~~ ~~0635~~ ~~0636~~ ~~0637~~ ~~0638~~ ~~0639~~ ~~0640~~ ~~0641~~ ~~0642~~ ~~0643~~ ~~0644~~ ~~0645~~ ~~0646~~ ~~0647~~ ~~0648~~ ~~0649~~ ~~0650~~ ~~0651~~ ~~0652~~ ~~0653~~ ~~0654~~ ~~0655~~ ~~0656~~ ~~0657~~ ~~0658~~ ~~0659~~ ~~0660~~ ~~0661~~ ~~0662~~ ~~0663~~ ~~0664~~ ~~0665~~ ~~0666~~ ~~0667~~ ~~0668~~ ~~0669~~ ~~0670~~ ~~0671~~ ~~0672~~ ~~0673~~ ~~0674~~ ~~0675~~ ~~0676~~ ~~0677~~ ~~0678~~ ~~0679~~ ~~0680~~ ~~0681~~ ~~0682~~ ~~0683~~ ~~0684~~ ~~0685~~ ~~0686~~ ~~0687~~ ~~0688~~ ~~0689~~ ~~0690~~ ~~0691~~ ~~0692~~ ~~0693~~ ~~0694~~ ~~0695~~ ~~0696~~ ~~0697~~ ~~0698~~ ~~0699~~ ~~0700~~ ~~0701~~ ~~0702~~ ~~0703~~ ~~0704~~ ~~0705~~ ~~0706~~ ~~0707~~ ~~0708~~ ~~0709~~ ~~0710~~ ~~0711~~ ~~0712~~ ~~0713~~ ~~0714~~ ~~0715~~ ~~0716~~ ~~0717~~ ~~0718~~ ~~0719~~ ~~0720~~ ~~0721~~ ~~0722~~ ~~0723~~ ~~0724~~ ~~0725~~ ~~0726~~ ~~0727~~ ~~0728~~ ~~0729~~ ~~0730~~ ~~0731~~ ~~0732~~ ~~0733~~ ~~0734~~ ~~0735~~ ~~0736~~ ~~0737~~ ~~0738~~ ~~0739~~ ~~0740~~ ~~0741~~ ~~0742~~ ~~0743~~ ~~0744~~ ~~0745~~ ~~0746~~ ~~0747~~ ~~0748~~ ~~0749~~ ~~0750~~ ~~0751~~ ~~0752~~ ~~0753~~ ~~0754~~ ~~0755~~ ~~0756~~ ~~0757~~ ~~0758~~ ~~0759~~ ~~0760~~ ~~0761~~ ~~0762~~ ~~0763~~ ~~0764~~ ~~0765~~ ~~0766~~ ~~0767~~ ~~0768~~ ~~0769~~ ~~0770~~ ~~0771~~ ~~0772~~ ~~0773~~ ~~0774~~ ~~0775~~ ~~0776~~ ~~0777~~ ~~0778~~ ~~0779~~ ~~0780~~ ~~0781~~ ~~0782~~ ~~0783~~ ~~0784~~ ~~0785~~ ~~0786~~ ~~0787~~ ~~0788~~ ~~0789~~ ~~0790~~ ~~0791~~ ~~0792~~ ~~0793~~ ~~0794~~ ~~0795~~ ~~0796~~ ~~0797~~ ~~0798~~ ~~0799~~ ~~0800~~ ~~0801~~ ~~0802~~ ~~0803~~ ~~0804~~ ~~0805~~ ~~0806~~ ~~0807~~ ~~0808~~ ~~0809~~ ~~0810~~ ~~0811~~ ~~0812~~ ~~0813~~ ~~0814~~ ~~0815~~ ~~0816~~ ~~0817~~ ~~0818~~ ~~0819~~ ~~0820~~ ~~0821~~ ~~0822~~ ~~0823~~ ~~0824~~ ~~0825~~ ~~0826~~ ~~0827~~ ~~0828~~ ~~0829~~ ~~0830~~ ~~0831~~ ~~0832~~ ~~0833~~ ~~0834~~ ~~0835~~ ~~0836~~ ~~0837~~ ~~0838~~ ~~0839~~ ~~0840~~ ~~0841~~ ~~0842~~ ~~0843~~ ~~0844~~ ~~0845~~ ~~0846~~ ~~0847~~ ~~0848~~ ~~0849~~ ~~0850~~ ~~0851~~ ~~0852~~ ~~0853~~ ~~0854~~ ~~0855~~ ~~0856~~ ~~0857~~ ~~0858~~ ~~0859~~ ~~0860~~ ~~0861~~ ~~0862~~ ~~0863~~ ~~0864~~ ~~0865~~ ~~0866~~ ~~0867~~ ~~0868~~ ~~0869~~ ~~0870~~ ~~0871~~ ~~0872~~ ~~0873~~ ~~0874~~ ~~0875~~ ~~0876~~ ~~0877~~ ~~0878~~ ~~0879~~ ~~0880~~ ~~0881~~ ~~0882~~ ~~0883~~ ~~0884~~ ~~0885~~ ~~0886~~ ~~0887~~ ~~0888~~ ~~0889~~ ~~0890~~ ~~0891~~ ~~0892~~ ~~0893~~ ~~0894~~ ~~0895~~ ~~0896~~ ~~0897~~ ~~0898~~ ~~0899~~ ~~0900~~ ~~0901~~ ~~0902~~ ~~0903~~ ~~0904~~ ~~0905~~ ~~0906~~ ~~0907~~ ~~0908~~ ~~0909~~ ~~0910~~ ~~0911~~ ~~0912~~ ~~0913~~ ~~0914~~ ~~0915~~ ~~0916~~ ~~0917~~ ~~0918~~ ~~0919~~ ~~0920~~ ~~0921~~ ~~0922~~ ~~0923~~ ~~0924~~ ~~0925~~ ~~0926~~ ~~0927~~ ~~0928~~ ~~0929~~ ~~0930~~ ~~0931~~ ~~0932~~ ~~0933~~ ~~0934~~ ~~0935~~ ~~0936~~ ~~0937~~ ~~0938~~ ~~0939~~ ~~0940~~ ~~0941~~ ~~0942~~ ~~0943~~ ~~0944~~ ~~0945~~ ~~0946~~ ~~0947~~ ~~0948~~ ~~0949~~ ~~0950~~ ~~0951~~ ~~0952~~ ~~0953~~ ~~0954~~ ~~0955~~ ~~0956~~ ~~0957~~ ~~0958~~ ~~0959~~ ~~0960~~ ~~0961~~ ~~0962~~ ~~0963~~ ~~0964~~ ~~0965~~ ~~0966~~ ~~0967~~ ~~0968~~ ~~0969~~ ~~0970~~ ~~0971~~ ~~0972~~ ~~0973~~ ~~0974~~ ~~0975~~ ~~0976~~ ~~0977~~ ~~0978~~ ~~0979~~ ~~0980~~ ~~0981~~ ~~0982~~ ~~0983~~ ~~0984~~ ~~0985~~ ~~0986~~ ~~0987~~ ~~0988~~ ~~0989~~ ~~0990~~ ~~0991~~ ~~0992~~ ~~0993~~ ~~0994~~ ~~0995~~ ~~0996~~ ~~0997~~ ~~0998~~ ~~0999~~ ~~1000~~ ~~1001~~ ~~1002~~ ~~1003~~ ~~1004~~ ~~1005~~ ~~1006~~ ~~1007~~ ~~1008~~ ~~1009~~ ~~1010~~ ~~1011~~ ~~1012~~ ~~1013~~ ~~1014~~ ~~1015~~ ~~1016~~ ~~1017~~ ~~1018~~ ~~1019~~ ~~1020~~ ~~1021~~ ~~1022~~ ~~1023~~ ~~1024~~ ~~1025~~ ~~1026~~ ~~1027~~ ~~1028~~ ~~1029~~ ~~1030~~ ~~1031~~ ~~1032~~ ~~1033~~ ~~1034~~ ~~1035~~ ~~1036~~ ~~1037~~ ~~1038~~ ~~1039~~ ~~1040~~ ~~1041~~ ~~1042~~ ~~1043~~ ~~1044~~ ~~1045~~ ~~1046~~ ~~1047~~ ~~1048~~ ~~1049~~ ~~1050~~ ~~1051~~ ~~1052~~ ~~1053~~ ~~1054~~ ~~1055~~ ~~1056~~ ~~1057~~ ~~1058~~ ~~1059~~ ~~1060~~ ~~1061~~ ~~1062~~ ~~1063~~ ~~1064~~ ~~1065~~ ~~1066~~ ~~1067~~ ~~1068~~ ~~1069~~ ~~1070~~ ~~1071~~ ~~1072~~ ~~1073~~ ~~1074~~ ~~1075~~ ~~1076~~ ~~1077~~ ~~1078~~ ~~1079~~ ~~1080~~ ~~1081~~ ~~1082~~ ~~1083~~ ~~1084~~ ~~1085~~ ~~1086~~ ~~1087~~ ~~1088~~ ~~1089~~ ~~1090~~ ~~1091~~ ~~1092~~ ~~1093~~ ~~1094~~ ~~1095~~ ~~1096~~ ~~1097~~ ~~1098~~ ~~1099~~ ~~1100~~ ~~1101~~ ~~1102~~ ~~1103~~ ~~1104~~ ~~1105~~ ~~1106~~ ~~1107~~ ~~1108~~ ~~1109~~ ~~1110~~ ~~1111~~ ~~1112~~ ~~1113~~ ~~1114~~ ~~1115~~ ~~1116~~ ~~1117~~ ~~1118~~ ~~1119~~ ~~1120~~ ~~1121~~ ~~1122~~ ~~1123~~ ~~1124~~ ~~1125~~ ~~1126~~ ~~1127~~ ~~1128~~ ~~1129~~ ~~1130~~ ~~1131~~ ~~1132~~ ~~1133~~ ~~1134~~ ~~1135~~ ~~1136~~ ~~1137~~ ~~1138~~ ~~1139~~ ~~1140~~ ~~1141~~ ~~1142~~ ~~1143~~ ~~1144~~ ~~1145~~ ~~1146~~ ~~1147~~ ~~1148</~~

SUBJECT Reclamation

PROJECT Artesia Nitex

PAGE 1

CLIENT NMOC

DATE Feb 26, 2024

BY SS

CHECKED

BY

SMA arrived on site at unit #005 @ 0805

→ set up law posters and got JSA & HASP ready for signing
J&H onsite @ ~0825

had everyone sign the HASP and JSA (paper) @ 0830

talked over general plan for removing any contaminated soil and polyline/piping.
plus gave an overview of which roads to reclaim.

@ ~0850 J&H began collecting scrap metal and loading in the back of their pickup.

once they collected all the equipment from unit #005 they began a surface scrape of the gravel and concrete washout.

→ revealed some steel staining in which Zach w/ J&H suggested it might be asphaltene (?) or rust from the metal

as the removal of polyline commences, and once they are able to get dirt haulers out here, we will have them scrape a little more off the surface, not to exceed 6in, to try and remove that staining.

after completing the surface scraping @ unit #005, we moved to unit #017 arriving @ 0945 and repeated the process.

~~continuing to #013 and #019 @ 1115 and 1215 respectively.~~

@ ~1355 the operator & spotter took their pickup truck w/ the scrap metal in it to the County landfill to dispose of.

→ they returned @ ~1510 for a second load

Steph arrived onsite @ ~1415

Everyone offsite @ 1540.

SUBJECT Artesia Metex - Field Notes

PROJECT

PAGE

CLIENT NMOC

DATE 2/27/2024

BY SH

CHECKED

BY

2/27/2024

0800 - SMA arrived onsite. At Unit 19.

0805 - J+H onsite.

Reviewed the day's scope and safety items. Signed JSA.

0815 - J+H sets up at Unit 19. W/ surface scrape a bit more.
Stained areas have definite oil odor. Not super strong though.0925 - J+H (Zach) heading to pick up / pull ^{metal cables} ~~polyline~~ from middle of field.
Cable is long. Crew pulled cable towards road. Trying to figure out how to cut without fraying and potential to impact face.

1010 - J+H crew off to town to pick up safety masks / shields to safely cut cable.

1015 - Steph + Zach to Unit 006 to see what is there.

1100 - Back at Unit 9. J+H starting to cut ^{short} poly lines into 3 ft sections.

1130 - Finished cutting

1200 - J+H crew back from town. Marking poly lines every 3 ft. Too windy to scrape soil.

1330 - At Unit 6, picking up ~~barred~~ partially barred piping w/ tractor

1400 - At Unit 19, picking up cut poly lines.

1415 - Offsite. J+H also off site.

0800 - SMA arrived on site

0805 - JSA reviewed safety measures and ~~for~~ scope of work
Signed JSA.

0830 - waiting for vac truck adapter to flush flow lines

0900 - Second vac truck showed up

0930 - Steph on site

1100 - Started pump out on flow line

SUBJECT Artesia Metex - Field Work

PROJECT

PAGE

CLIENT NMCO

DATE 2/28/2024

BY

CHECKED

BY

11:00 - Georgetown offsite.

J+H prepping for flushing polyline, starting with long one from Unit 19 to Unit 5. Approximately 50 barrels of fresh water pumped through. Approximately ~~400~~ 60 bbls of petroleum liquid coming from poly line. ^{6+ flush water}
So total of about 10 bbls of petroleum liquid was in the line.

12:00 - Finished flushing line. Began cutting poly into 3-ft sections.

13:00 - Move over to Unit 18 and pulled polyline to that pad area.

15:25 - Begin cutting the multiple polylines into 3-ft sections. Will come back tomorrow with generator and extra cutting tools.

16:00 - Offsite. J+H offsite too.

0800 On site
0800 Signed JSA
0820 Cutting pipe
0845 Break to warm up
0930 J+J brought trash trailers to haul off pipe
1000 Back to cutting pipe and loading into trash bin
1215 lunch break
1240 Back to work cutting pipe
1500 left site

32°degrees
Cloudy/wet

Artesia Metex - NMOCB March 1, 2024

Field Notes:SMA onsite @ ~~0755~~ @ unit # 018

JSA @ 0800

J+H onsite @ 0700 w/ 2 hacksaws and began work on cutting the poly line

when SMA arrived onsite J+H had ~80% of the poly line cut but still has some metal pipe all over the units that needed to be collected & cut.

→ J+H is going to split cut poly between two trash trailers for weight

Completed cutting poly @ 0330

Started loading poly into trash trailers @ 0840

Miguel w/ J+H arrived onsite @ 0900

→ signed JSA

→ gave me more of a game plan

* J+H will finish loading poly in trash trailers and then scrape in areas where there was liquid release after poly flushing & cutting.

They will then work on gathering all of the spoil piles to one location to the belly with haul to travel to all 4 locations w/ piles.

once that is complete (which is their #1 priority because they will be hauling it off on Monday) they will then gather any metal piping and begin cutting that.

@ 0945 They began moving dirt piles & scraping dirty areas

SMA left site @ 1100

0800 - Arrived on site Filled out JSA

0815 - Signed JSA with J+H

0830 - J+H had piled Contaminated Soil onto ^{Unit} D18 From all units

1000 - Semi brought one load of top soil

1030 - Semi hauled one load of ~~top soil~~ Contaminated Soil. Miguel ~~and~~ estimated 40yds (2 loads) hauled out

1200 - lunch - Semi had a blow out ~~address~~

300 - Continued to scrap the rest of the day.

- Going to continue hauling in the morning.

3-5-2024

- Miguel - Hauled in' 20 yds hauled out 40 yds

3-6-2024

- dozer arrived on site First thing.

1200 - Started ripping ~~prod~~ unit 005

~~3-11-2024~~

- NO Contamination observed on any unit

3-11-2024

J+H OFF back to work on 3-12-24

- 1030 - Filled out JSA
- J+H Crew Signed JSA
- When I Arrived guys were working on unit 018 'Ripping'
- Unit 005, Access road to unit ~~017~~ 017, Unit 017, Access road to Unit 018 were complete.
- 1300 - started Ripping Unit 019.

3-13-24

- J+H Continued Ripping Unit 019. And plan to do Access road in the morning

3-14-24

- 1100 Arrived on site Filled out JSA J+H signed JSA
- 1130 J+H were Ripping access roads from unit 019.
- 1200 Walked around Unit 019 and observed darker colored soil was ripped up with the dozer. It also contained a smell.
- 1215 Notified Steph of findings
- J+H notified as well as OCD
- 1300 Miguel and I walked ~~past~~ unit 006 made a plan to only rip bare spots. Miguel said we may rip up more Contamination due to reserve pad.
- As for now no contamination has been ~~observed~~ observed.

- J+H are moving equipment for seeding in.
- J+H are moving equipment out that is no longer needed
- Bringing in straw rolls to unit sites.

3-19-24

- J+H started seeding and finished up Unit 006 and unit 08 plus access roads.

3-20-24

- J+H finished seeding all units and access roads @ noon and started laying straw.



NORM SCREENING FORM

LOCATION NAME: Artesia Metex Unit #019				DATE: 01/09/2024	
SMA PERSONNEL: Sarahmay Schlea & Erin Berry				TIME ON SITE: 1145	
INSTRUMENT: Geiger Counter Ludlum Model 3 Serial Number 83222				TIME OFF SITE: 1225	
EQUIPMENT ID	Time	Instrument Reading (cpm)	Exposure Rate ($\mu\text{R/hr}$)	Photo taken	NOTES/REMARKS (e.g. GPS)
AM19_001	1145	1500	8.57	<input checked="" type="checkbox"/> Yes	32.726654, -104.229317
AM19_002	1148	1700	9.71	<input checked="" type="checkbox"/> Yes	32.726639, -104.229410
AM19_003	1150	1500	8.57	<input checked="" type="checkbox"/> Yes	32.726302, -104.229224
AM19_004	1151	1100	6.29	<input checked="" type="checkbox"/> Yes	camera malfunction
AM19_005	1153	1300	7.43	<input checked="" type="checkbox"/> Yes	32.726616, -104.229047
AM19_006	1155	1400	8.00	<input checked="" type="checkbox"/> Yes	32.726535, -104.229015
AM19_007	1156	1600	9.14	<input checked="" type="checkbox"/> Yes	32.726555, -104.228977
AM19_008	1158	1400	8.00	<input checked="" type="checkbox"/> Yes	32.726412, -104.228942
AM19_009	1200	1500	8.57	<input checked="" type="checkbox"/> Yes	32.726635, -104.228901
AM19_010	1201	1500	8.57	<input checked="" type="checkbox"/> Yes	32.726729, -104.228845
AM19_011	1202	1500	8.57	<input checked="" type="checkbox"/> Yes	32.726661, -104.228741
AM19_012	1024	1400	8.00	<input checked="" type="checkbox"/> Yes	camera malfunction
AM19_013	1026	1400	8.00	<input checked="" type="checkbox"/> Yes	32.726196, -104.228995
AM19_014	1027	1400	8.00	<input checked="" type="checkbox"/> Yes	32.726166, -104.228945
AM19_015	1209	1500	8.57	<input checked="" type="checkbox"/> Yes	32.726247, -104.228747
AM19_016	1210	1500	8.57	<input checked="" type="checkbox"/> Yes	32.726221, -104.228738
				<input type="checkbox"/> Yes	

Conversion rate: 175 cpm per $\mu\text{R/hr}$. Example: If instrument reading was 2000 cpm, then $2000/175 = 11.43 \mu\text{R/hr}$.

NORM disposal threshold = 50 $\mu\text{R/hr}$. If exceeds, then notify SMA project manager/safety officer/OCD.

Photograph Log**SITE: Artesia Metex Unit #019****CLIENT: New Mexico OCD**

Photograph #1	A photograph showing a black polyline running through a dry, rocky desert landscape. The polyline is a thick, black, flexible tube. A scale bar at the top of the image shows distances from 30 to 150 feet, with a green vertical line at the 90-foot mark. Below the scale bar, the following metadata is displayed: 85°E (T), 32.726656°N, 104.229817°W ±13ft, and 3584ft. A green tag is attached to the polyline. The date and time '01/09/2024 11:46:51 AM' are printed in green at the bottom right of the photo.
Client: New Mexico OCD	
Site Name: Artesia Metex Unit #019	
Date Photo Taken: 01.09.2024	
Equipment Location: 32.726656N -104.229817W S: 24 T: 18S R: 27E Eddy County, New Mexico	
Photo Taken by: Sarahmay Schlea	Description: Unit #019 debris, polyline, NORM = 1500 cpm.

Photograph Log**SITE: Artesia Metex Unit #019****CLIENT: New Mexico OCD**

Photograph #2	A photograph showing a black polyline (a type of geotextile) laid out on dry, sandy, and sparsely vegetated ground. A yellow tag is attached to the polyline. At the top of the image is a scale bar with markings for North (N), Northeast (NE), and East (E), with distances in feet (0, 30, 60, 90, 120). Below the scale bar is a metadata overlay showing a bearing of 54°NE (T), coordinates 32.726639°N, 104.229410°W ±13ft, and an elevation of 3574ft. In the bottom right corner of the photo, a green timestamp reads '07/09/2024 11:48:34 MST'.
Client: New Mexico OCD	
Site Name: Artesia Metex Unit #019	
Date Photo Taken: 01.09.2024	
Equipment Location: 32.726639N -104.229410W S: 24 T: 18S R: 27E Eddy County, New Mexico	
Photo Taken by: Sarahmay Schlea	Description: Unit #019 debris, polyline, NORM = 1700 cpm.

Photograph Log**SITE: Artesia Metex Unit #019****CLIENT: New Mexico OCD**

Photograph #3	A photograph showing a black polyline pipe lying on a gravelly, desert floor. A surveying instrument is positioned next to the pipe. Above the photo is a scale bar with markings for 210, 240, 270, and 300 feet, and directional indicators SW, W, and NW. Below the scale bar is a text overlay: "251°W (T) 32.726302°N, 104.229224°W ±462ft ▲ 3565ft". A green timestamp "01/09/2024 11:53:12 MST" is visible in the bottom right corner of the photo.
Client: New Mexico OCD	
Site Name: Artesia Metex Unit #019	
Date Photo Taken: 01.09.2024	
Equipment Location: 32.726302N -104.229224W S: 24 T: 18S R: 27E Eddy County, New Mexico	
Photo Taken by: Sarahmay Schlea	Description: Unit #019 debris, polyline, NORM = 1500 cpm.

Photograph Log**SITE: Artesia Metex Unit #019****CLIENT: New Mexico OCD**

Photograph #4	
Client: New Mexico OCD	
Site Name: Artesia Metex Unit #019	
Date Photo Taken: 01.09.2024	
Equipment Location: 32.726616N -104.229047W S: 24 T: 18S R: 27E Eddy County, New Mexico	
Photo Taken by: Sarahmay Schlea	Description: Unit #019 debris, polyline and metal piping, NORM = 1100 cpm.

Photograph Log**SITE: Artesia Metex Unit #019****CLIENT: New Mexico OCD**

Photograph #5	A photograph showing a piece of rusted metal debris on a gravelly ground. A yellow tag is attached to the debris. A scale bar at the top indicates distances from 0 to 120 feet. A GPS overlay at the top shows a bearing of 65°NE (T) and coordinates 32.726585°N, 104.229015°W at an elevation of ±4796ft and 3574ft. A timestamp in the bottom right corner reads '01/09/2024, 13:57:01 MST'. The legs of a person wearing blue jeans and black boots are visible in the upper right corner of the photo.
Client: New Mexico OCD	
Site Name: Artesia Metex Unit #019	
Date Photo Taken: 01.09.2024	
Equipment Location: 32.726585N -104.229015W S: 24 T: 18S R: 27E Eddy County, New Mexico	
Photo Taken by: Sarahmay Schlea	Description: Unit #019 debris, metal piping, NORM = 1400 cpm.

Photograph Log**SITE: Artesia Metex Unit #019****CLIENT: New Mexico OCD**

Photograph #6	A photograph showing a black polyline pipe lying on the ground in a desert environment. The ground is sandy and rocky with sparse, dry vegetation. A yellow tag is attached to the pipe. At the top of the image is a scale bar with markings for 120, 150, 180, 210, and 240 feet, with 'SE', 'S', and 'SW' labels. Below the scale bar is a metadata line: '174°S (T) 32.726555°N, 104.228977°W ±1866ft ▲ 3570ft'. In the bottom right corner of the photo, a green timestamp reads '05/09/2024 11:58:15 MST'.
Client: New Mexico OCD	
Site Name: Artesia Metex Unit #019	
Date Photo Taken: 01.09.2024	
Equipment Location: 32.726555N -104.228977W S: 24 T: 18S R: 27E Eddy County, New Mexico	
Photo Taken by: Sarahmay Schlea	Description: Unit #019 debris, polyline, NORM = 1600 cpm.

Photograph Log**SITE: Artesia Metex Unit #019****CLIENT: New Mexico OCD**

Photograph #7	
Client: New Mexico OCD	
Site Name: Artesia Metex Unit #019	
Date Photo Taken: 01.09.2024	
Equipment Location: 32.726612N -104.228962W S: 24 T: 18S R: 27E Eddy County, New Mexico	
Photo Taken by: Sarahmay Schlea	Description: Unit #019 debris, polyline, NORM = 1400 cpm.

Photograph Log**SITE: Artesia Metex Unit #019****CLIENT: New Mexico OCD**

Photograph #8	A photograph showing a close-up of a rusty metal pipe or debris on a rocky, dry ground. A yellow tag is attached to the pipe. Above the photo is a scale bar with markings for 30, 60, 90, and 120 feet, and directional indicators for NE, E, and SE. Below the scale bar is a geotag showing coordinates: 75°E (T), 32.726685°N, 104.228901°W, ±6020ft, and an elevation of 3575ft. A green timestamp '01/09/2024 12:03:17 M6T' is visible in the bottom right corner of the photo.
Client: New Mexico OCD	
Site Name: Artesia Metex Unit #019	
Date Photo Taken: 01.09.2024	
Equipment Location: 32.726685N -104.228901W S: 24 T: 18S R: 27E Eddy County, New Mexico	
Photo Taken by: Sarahmay Schlea	Description: Unit #019 debris, metal piping, NORM = 1500 cpm.

Photograph Log**SITE: Artesia Metex Unit #019****CLIENT: New Mexico OCD**

Photograph #9	A photograph of a long, rusted metal pipe lying on the ground in a desert environment. The pipe is oriented vertically in the frame. Above the pipe, there is a scale bar with markings from 30 to 120 feet and a compass rose showing North (N), East (E), and South (S). Below the scale bar, the following text is displayed: 73°E (T) 32.726729°N, 104.228845°W ±9ft ▲ 3583ft. A yellow tag is attached to the pipe. In the bottom right corner of the photo, the date and time '01/09/2024 12:03:29 MST' are printed in green.
Client: New Mexico OCD	
Site Name: Artesia Metex Unit #019	
Date Photo Taken: 01.09.2024	
Equipment Location: 32.726729N -104.228845W S: 24 T: 18S R: 27E Eddy County, New Mexico	
Photo Taken by: Sarahmay Schlea	Description: Unit #019 debris, metal piping, NORM = 1500 cpm.

Photograph Log**SITE: Artesia Metex Unit #019****CLIENT: New Mexico OCD**

Photograph #10	A photograph showing a rusty metal pipe lying diagonally across a dry, sandy desert landscape with sparse vegetation. A yellow tag is attached to the pipe. At the top of the image is a scale bar with markings for 30, 60, 90, 120, and 150 feet, with 'NE', 'E', and 'SE' labels. Below the scale bar is a text overlay: '82°E (T) 32.726661°N, 104.228741°W ±13ft ▲ 3581ft'. In the bottom right corner of the photo, a green timestamp reads '01/09/2024, 12:03:44 MST'.
Client: New Mexico OCD	
Site Name: Artesia Metex Unit #019	
Date Photo Taken: 01.09.2024	
Equipment Location: 32.726661N -104.228741W S: 24 T: 18S R: 27E Eddy County, New Mexico	
Photo Taken by: Sarahmay Schlea	Description: Unit #019 debris, metal piping, NORM = 1500 cpm.

Photograph Log**SITE: Artesia Metex Unit #019****CLIENT: New Mexico OCD**

Photograph #11	A photograph of a rusty, rectangular metal box, likely an electrical control unit, lying on the ground in a desert environment. The box is surrounded by sparse, dry vegetation and a dirt path. A scale bar at the top of the image shows distances from 0 to 120 feet, with a green vertical line at 60 feet. Below the scale bar, coordinates are displayed: 54°NE (T), 32.726196°N, 104.228995°W ±13ft, and an elevation of 3587ft. A timestamp in the bottom right corner of the photo reads '01/09/2024 12:08:46 MST'. The photo is taken from a slightly elevated angle, showing the box and its surroundings in detail.
Client: New Mexico OCD	
Site Name: Artesia Metex Unit #019	
Date Photo Taken: 01.09.2024	
Equipment Location: 32.726196N -104.228995W S: 24 T: 18S R: 27E Eddy County, New Mexico	
Photo Taken by: Sarahmay Schlea	Description: Unit #019 debris, electrical equipment, NORM = 1400 cpm.

Photograph Log**SITE: Artesia Metex Unit #019****CLIENT: New Mexico OCD**

Photograph #12	A photograph showing a person's legs and feet standing on dry, reddish-brown soil. A long, dark metal pipe lies on the ground, curving from the left towards the center. A yellow tag is attached to the pipe. In the background, there is some dry, gnarled wood. A compass overlay at the top of the photo shows directions E, SE, and S with degree markings. Below the compass, coordinates are displayed: 123°SE (T), 32.726166°N, 104.228945°W ±13ft, and an elevation of 3574ft. A green timestamp in the bottom right corner of the photo reads 01/09/2024 12:09:07 MST.
Client: New Mexico OCD	
Site Name: Artesia Metex Unit #019	
Date Photo Taken: 01.09.2024	
Equipment Location: 32.726166N -104.228945W S: 24 T: 18S R: 27E Eddy County, New Mexico	
Photo Taken by: Sarahmay Schlea	Description: Unit #019 debris, metal piping, NORM = 1400 cpm.

Photograph Log**SITE: Artesia Metex Unit #019****CLIENT: New Mexico OCD**

Photograph #13	A photograph showing a long, rusted metal pipe lying on dry, sandy ground. A yellow tag is attached to the pipe. In the background, there is a scale bar with markings for 0, 30, 60, and 90 feet. Above the scale bar, there are orientation markers for North (N), Northeast (NE), and East (E). Below the scale bar, there is a line of text: "47°NE (T) 32.726247°N, 104.228747°W ±16ft 3580ft". A clipboard with a pen is also visible on the ground. In the bottom right corner of the photo, there is a green timestamp: "01/09/2024 12:13:23 MST".
Client: New Mexico OCD	
Site Name: Artesia Metex Unit #019	
Date Photo Taken: 01.09.2024	
Equipment Location: 32.726247N -104.228747W S: 24 T: 18S R: 27E Eddy County, New Mexico	
Photo Taken by: Sarahmay Schlea	Description: Unit #019 debris, metal piping, NORM = 1500 cpm.

Photograph Log**SITE: Artesia Metex Unit #019****CLIENT: New Mexico OCD**

Photograph #14	A photograph of a long, dark brown metal pipe lying on dry, sandy ground. A yellow tag is attached to the pipe. At the top of the image is a scale bar with markings for 90, 120, 150, 180, and 210 feet. Above the scale bar are labels for 'E', 'SE', and 'S'. Below the scale bar is a line of location data: '139°SE (T) 32.726221°N, 104.228738°W ±13ft ▲ 3589ft'. In the bottom right corner of the photo, there is a green timestamp: '01/09/2024 12:13:36 MST'.
Client: New Mexico OCD	
Site Name: Artesia Metex Unit #019	
Date Photo Taken: 01.09.2024	
Equipment Location: 32.726221N -104.228738W S: 24 T: 18S R: 27E Eddy County, New Mexico	
Photo Taken by: Sarahmay Schlea	Description: Unit #019 debris, metal piping, NORM = 1500 cpm.

Photograph Log**SITE: Artesia Metex Unit #019****CLIENT: New Mexico OCD**

Photograph #15	<p>The photograph shows a wide, flat, sandy area under a clear blue sky. In the distance, two people are standing near a small structure. A backhoe loader is visible on the right side of the frame. A compass overlay at the top of the photo indicates a bearing of 299°NW (T) and coordinates 32.726334°N, 104.228714°W ±19ft, with an elevation of 3578ft. The compass also shows cardinal directions (W, NW, N) and degree markings (240, 270, 300, 330, 0). A green timestamp '02/26/2024 13:22:58 MST' is visible in the bottom right corner of the photo.</p>
Client: New Mexico OCD	
Site Name: Artesia Metex Unit #019	
Date Photo Taken: 02.26.2024	
Site Location: 32.72641N -104.22887W S: 24 T: 18S R: 27E Eddy County, New Mexico	
Photo Taken by: Sarahmay Schlea	Description: Backhoe surface scraping area.

Photograph Log**SITE: Artesia Metex Unit #019****CLIENT: New Mexico OCD**

Photograph #16	A photograph showing a yellow and black Deere backhoe loader in a flat, arid desert landscape. The machine is positioned in the middle ground, facing left, with its rear-mounted backhoe arm extended. The ground is dry and sandy with sparse, low-lying desert vegetation. In the background, a line of wind turbines is visible on the horizon under a heavy, overcast sky with grey and white clouds.
Client: New Mexico OCD	
Site Name: Artesia Metex Unit #019	
Date Photo Taken: 02.27.2024	
Site Location: 32.72641N -104.22887W S: 24 T: 18S R: 27E Eddy County, New Mexico	
Photo Taken by: Stephanie Hinds	Description: Backhoe surface scraping the operational staining.

Photograph Log**SITE: Artesia Metex Unit #019****CLIENT: New Mexico OCD**

Photograph #17	A photograph showing a large number of cut, dark-colored, flexible piles (likely polypropylene) scattered on the ground in a desert environment. A vertical metal post with a small, rectangular metal plate at the top stands in the center of the pile. The ground is dry, sandy, and covered with sparse, low-lying vegetation. The background shows a flat, open landscape under a cloudy sky.
Client: New Mexico OCD	
Site Name: Artesia Metex Unit #019	
Date Photo Taken: 02.28.2024	
Site Location: 32.72641N -104.22887W S: 24 T: 18S R: 27E Eddy County, New Mexico	
Photo Taken by: Stephanie Hinds	Description: Cut polyline piles accumulated at Unit #019.


Photograph Log**SITE: Artesia Metex Unit #019****CLIENT: New Mexico OCD**

Photograph #18	
Client: New Mexico OCD	
Site Name: Artesia Metex Unit #019	
Date Photo Taken: 02.28.2024	
Site Location: 32.72641N -104.22887W S: 24 T: 18S R: 27E Eddy County, New Mexico	
Photo Taken by: Stephanie Hinds	Description: Process of polyline cutting using cordless reciprocating saw.


Photograph Log**SITE: Artesia Metex Unit #019****CLIENT: New Mexico OCD**

Photograph #19	
Client: New Mexico OCD	
Site Name: Artesia Metex Unit #019	
Date Photo Taken: 02.28.2024	
Site Location: 32.72641N -104.22887W S: 24 T: 18S R: 27E Eddy County, New Mexico	
Photo Taken by: Stephanie Hinds	Description: Polyline flushing connection at Unit #019. Stained soil from flushing was later scraped using a backhoe, removed from location, and disposed.

Photograph Log**SITE: Artesia Metex Unit #019****CLIENT: New Mexico OCD**

Photograph #20	
Client: New Mexico OCD	
Site Name: Artesia Metex Unit #019	
Date Photo Taken: 02.28.2024	
Site Location: 32.72641N -104.22887W S: 24 T: 18S R: 27E Eddy County, New Mexico	
Photo Taken by: Stephanie Hinds	Description: Polyline flushing connection to the freshwater truck. Freshwater truck was staged at Unit #019.

Photograph Log**SITE: Artesia Metex Unit #019****CLIENT: New Mexico OCD**

Photograph #21	
Client: New Mexico OCD	
Site Name: Artesia Metex Unit #019	
Date Photo Taken: 03.14.2024	
Release Location: 32.725752N -104.231078W S:24 T:18S R:27E Eddy County, New Mexico	
Photo Taken by: Georgeann Goodman	Description: Continued surface scraping of operational staining.

Photograph Log**SITE: Artesia Metex Unit #019****CLIENT: New Mexico OCD**

Photograph #22	<p>The photograph shows a wide, flat desert landscape under a blue sky with scattered white clouds. The ground is dry and sandy with sparse, low-lying vegetation. A compass overlay at the top of the image indicates a bearing of 252°SW (T) and coordinates 32.726574, -104.228776 ±4m, with an elevation of 1070m. The compass also shows cardinal and ordinal directions: S (180), SW (210), W (270), and NW (330). In the bottom right corner of the photo, the text 'Unit 019' and '04 Mar 2024, 10:56:03 AM' is visible.</p>
Client: New Mexico OCD	
Site Name: Artesia Metex Unit #019	
Date Photo Taken: 03.04.2024	
Release Location: 32.725752N -104.231078W S:24 T:18S R:27E Eddy County, New Mexico	
Photo Taken by: Georgeann Goodman	Description: Unit #019 wellpad area, post surface scraping.

Photograph Log**SITE: Artesia Metex Unit #019****CLIENT: New Mexico OCD**

Photograph #23		
Client: New Mexico OCD		
Site Name: Artesia Metex Unit #019		
Date Photo Taken: 03.14.2024		
Release Location: 32.725752N -104.231078W S:24 T:18S R:27E Eddy County, New Mexico		
Photo Taken by: Georgeann Goodman	Description: Ripping wellpad for Unit #019.	

Photograph Log**SITE: Artesia Metex Unit #019****CLIENT: New Mexico OCD**

Photograph #24	
Client: New Mexico OCD	
Site Name: Artesia Metex Unit #019	
Date Photo Taken: 03.14.2024	
Release Location: 32.726677N -104.229075W S:24 T:18S R:27E Eddy County, New Mexico	
Photo Taken by: Georgeann Goodman	Description: Ripping lines along Unit #019 wellpad and access road. Polyline in background is tied to another wellpad/operator not related to the Artesia Metex Units.

Photograph Log**SITE: Artesia Metex Unit #019****CLIENT: New Mexico OCD**

Photograph #25	<p>The photograph shows a wide, unpaved dirt road stretching into the distance under a clear blue sky. The terrain is arid with sparse, low-lying desert vegetation. A digital compass overlay at the top of the image indicates a bearing of 284°W (T) and coordinates of 32.725752, -104.231078 ±3m, with an elevation of 1061m. The compass also shows cardinal directions (SW, W, NW, N) and degree markings (210, 240, 270, 300, 330, 0). At the bottom of the image, text reads 'Ripping complete-road approaching 019' and 'Unit 019 14 Mar 2024, 11:46:10 AM'.</p>
Client: New Mexico OCD	
Site Name: Artesia Metex Unit #019	
Date Photo Taken: 03.14.2024	
Release Location: 32.725752N -104.231078W S:24 T:18S R:27E Eddy County, New Mexico	
Photo Taken by: Georgeann Goodman	Description: Ripping access road to Unit #019 completed.

Photograph Log**SITE: Artesia Metex Unit #019****CLIENT: New Mexico OCD**

Photograph #26	<p>The photograph shows a wide, flat, arid landscape under a clear blue sky. A dirt road or track runs across the middle ground. A compass overlay at the top of the image shows directions N, NE, E, and SE with degree markings. Below the compass, text reads: "58°NE (T) • 32.726025, -104.230997 ±5m ▲ 1062m". At the bottom of the image, text reads: "Ripping complete-road approaching 019" and "Unit 019 14 Mar 2024, 11:47:06 AM".</p>
Client: New Mexico OCD	
Site Name: Artesia Metex Unit #019	
Date Photo Taken: 03.14.2024	
Release Location: 32.726025N -104.230997W S:24 T:18S R:27E Eddy County, New Mexico	
Photo Taken by: Georgeann Goodman	Description: Ripping access road to Unit #019 completed.

Photograph Log**SITE: Artesia Metex Unit #019****CLIENT: New Mexico OCD**

Photograph #27	
Client: New Mexico OCD	
Site Name: Artesia Metex Unit #019	
Date Photo Taken: 03.20.2024	
Release Location: 32.725997N -104.231233W S:24 T:18S R:27E Eddy County, New Mexico	
Photo Taken by: Georgeann Goodman	Description: Distant view of Unit #019 wellpad and access road. Seeding process complete.

Photograph Log**SITE: Artesia Metex Unit #019****CLIENT: New Mexico OCD**

Photograph #28	
Client: New Mexico OCD	
Site Name: Artesia Metex Unit #019	
Date Photo Taken: 03.24.2024	
Release Location: S:24 T:18S R:27E Eddy County, New Mexico	
Photo Taken by: Miguel Ramirez	Description: Seed and straw blanket applied to Unit #019 wellpad.

APPENDIX C: SEED MIX LIST

Worksheet for Determining Seeding Rates and Amounts

Client: Turkey Track
 Planned by: RSJ

Field Office: Artesia W
 Date: 10/30/2020

Field No.	Acres to be Planted	Species	Planting Rate per Acre	% of Mix	Amount Required per Acre	Total Amount Required
1	1.0	Grama, Blue (Native)	10.0 Pls lb	40%	4.0 Pls lb	4.0 Pls lb
		Dropseed, Sand	1.0 Pls lb	10%	0.1 Pls lb	0.1 Pls lb
		Bluestem, Cane	6.0 Pls lb	5%	0.3 Pls lb	0.3 Pls lb
		Grama, Sideoats (Haskell)	4.5 Pls lb	40%	1.8 Pls lb	1.8 Pls lb
		Plains Bristlegrass, Native	3.0 Pls lb	15%	0.5 Pls lb	0.5 Pls lb
		Total		110%	6.7	6.7
Field No.	Acres to be Planted	Species	Planting Rate per Acre	% of Mix	Amount Required per Acre	Total Amount Required
2	1.0	Bluestem, Sand (Woodward)	5.0 Pls lb	20%	1.0 Pls lb	1.0 Pls lb
		Bluestem, Little (Native)	3.4 Pls lb	30%	1.0 Pls lb	1.0 Pls lb
		Plains Bristlegrass, Native	5.0 Pls lb	20%	1.0 Pls lb	1.0 Pls lb
		Dropseed, Sand	1.0 Pls lb	10%	0.1 Pls lb	0.1 Pls lb
		Grama, Blue (Native)	10.0 Pls lb	20%	2.0 Pls lb	2.0 Pls lb
		Bluestem, Cane	6.0 Pls lb	5%	0.3 Pls lb	0.3 Pls lb
		Grama, Sideoats (Haskell)	4.5 Pls lb	10%	0.5 Pls lb	0.5 Pls lb
		Total		115%	5.9	5.9
Field No.	Acres to be Planted	Species	Planting Rate per Acre	% of Mix	Amount Required per Acre	Total Amount Required
3	1.0	Grama, Sideoats (Haskell)	4.5 Pls lb	40%	1.8 Pls lb	1.8 Pls lb
		Bluestem, Little (Native)	3.4 Pls lb	25%	0.9 Pls lb	0.9 Pls lb
		Grama, Blue (Native)	10.0 Pls lb	40%	4.0 Pls lb	4.0 Pls lb
		Dropseed, Sand	1.0 Pls lb	10%	0.1 Pls lb	0.1 Pls lb
		Bluestem, Cane	6.0 Pls lb	5%	0.3 Pls lb	0.3 Pls lb
		Total		120%	7.1	7.1
Field No.	Acres to be Planted	Species	Planting Rate per Acre	% of Mix	Amount Required per Acre	Total Amount Required
4	1.0	Sacaton, Alkali	1.0 Pls lb	50%	0.5 Pls lb	0.5 Pls lb
		Saltbush, Fourwing	5.0 Pls lb	40%	2.0 Pls lb	2.0 Pls lb
		Grama, Sideoats (Haskell)	4.5 Pls lb	10%	0.5 Pls lb	0.5 Pls lb

Artesia Metex seed mix

Total				100%	3.0	3.0
Field No.	Acres to be Planted	Species	Planting Rate per Acre	% of Mix	Amount Required per Acre	Total Amount Required
5	1.0	Sacaton, Alkali	1.0 Pls lb	40%	0.4 Pls lb	0.4 Pls lb
		Saltbush, Fourwing	5.0 Pls lb	15%	0.8 Pls lb	0.8 Pls lb
		Grama, Sideoats (Haskell)	4.5 Pls lb	50%	2.3 Pls lb	2.3 Pls lb
Total				105%	3.4	3.4
Field No.	Acres to be Planted	Species	Planting Rate per Acre	% of Mix	Amount Required per Acre	Total Amount Required
Total						

APPENDIX D: WASTE MANIFESTS, DISPOSAL RECORDS



Waste manifests indicates all operationally stained soil was removed from AM Unit #019. Operationally stained soil was stockpiled from all units onto AM Unit #018, and was removed from AM Unit #018

LEA LAND, LLC SURFACE WASTE LANDFILL

MILE MARKER #64 US HWY 62/180 • 30 MILES EAST OF CARLSBAD, NM • PHONE (575) 887-4048

NON-HAZARDOUS WASTE MANIFEST		No. 201875		Trailer No. J&H SERVICES 682	
GENERATOR	Company Name: J & H Services		Address: 6616 Gulton Ct NE #190 Albuquerque, NM 87109		Disposal Date: 03-04-2024 12:06 PM
	Phone: 505-896-9428				
	Name Or Description Of Waste Shipped:				
	<input checked="" type="checkbox"/> RCRA Exempt <input type="checkbox"/> RCRA Non-Exempt				
	Weight (lbs): 35780, 36140 TA 71920				
TRANSPORTER	Lease/Job Name: ARTISIA METEX UNIT #19				
	Generator's Representative: Zach Conder				
	Name: J&H Services, Inc.				
	Emergency Contact:				
	Emergency Contact Phone:				
DISPOSAL FACILITY	Transporter: Acknowledgment of Delivery of Material				
	Printed/Typed Name (Impreso/Mecanografico): Raul R Cardenas				
	Signature (Firma): X [Signature] Date: 03-04-2024 12:06 PM				
	Lea Land, LLC		Mile Marker 64, U.S. Hwy 62/180, 30 Miles East Of Carlsbad, NM		(575) 887-4048
	Permit No: NM-1-0035-New Mexico		Comments:		
Disposal Facility's Certification: I Hereby Certify That The Above-Described Wastes Were Delivered To This Facility.					
Authorized Signature: [Signature]		Unit No: IIA	Date: 03-04-2024	Time: 12:06 PM	

LEA LAND, LLC

1300 WEST MAIN STREET • OKLAHOMA CITY, OK 73106 • PHONE (405) 236-4257

**LEA LAND, LLC SURFACE WASTE LANDFILL**

MILE MARKER #64 US HWY 62/180 • 30 MILES EAST OF CARLSBAD, NM • PHONE (575) 887-4048

NON-HAZARDOUS WASTE MANIFEST		No. 201902	Trailer No. J&H 682		
GENERATOR	Company Name: J & H Services		Address: 6616 Gulton Ct NE #190 Albuquerque, NM 87109		Disposal Date: 03-05-2024 09:22 AM
	Phone: 505-896-9428				
	Name Or Description Of Waste Shipped:				
	<input checked="" type="checkbox"/> RCRA Exempt <input type="checkbox"/> RCRA Non-Exempt				
	Weight (lbs): 42540, 43160, 43740 Total 129440				
TRANSPORTER	Lease/Job Name: ARTISIA METEX UNIT # 19				
	Generator's Representative: Zach Conder				
	Name: J&H Services, Inc.				
	Emergency Contact:				
	Emergency Contact Phone:				
DISPOSAL FACILITY	Transporter: Acknowledgment of Delivery of Material				
	Printed/Typed Name (Impreso/Mecanografico): <u>Raul R Cardenas</u>				
	Signature (Firma): <u>[Signature]</u> Date: 03-05-2024 09:22 AM				
	Lea Land, LLC		Mile Marker 64, U.S. Hwy 62/180, 30 Miles East Of Carlsbad, NM		(575) 887-4048
	Permit No: NM-1-0035-New Mexico		Comments:		
DISPOSAL FACILITY	Disposal Facility's Certification: I Hereby Certify That The Above-Described Wastes Were Delivered To This Facility.				
	Authorized Signature: <u>[Signature]</u>		Unit No: IIA	Date: 03-05-2024	Time: 09:22 AM

LEA LAND, LLC
1300 WEST MAIN STREET • OKLAHOMA CITY, OK 73106 • PHONE (405) 236-4257

APPENDIX E: GEIGER COUNTER CALIBRATION RECORD

Scientific and Industrial
Instruments

www.ludlums.com

CERTIFICATE OF CALIBRATION

LUDLUM MEASUREMENTS, INC.

501 Oak Street

325-235-5494

Sweetwater, TX 79556, U.S.A.



CERT # 4084.01

Customer JAKD SOLUTIONS LLCORDER NO. 20456634/547544Mfg. Ludlum Measurements, Inc. Model 3Serial No. 83222Mfg. Ludlum Measurements, Inc. Model 44-2Serial No. PR3S4334Cal. Date 24-Oct-23 Cal Due Date 24-Oct-24 Cal. Interval 1 Year Meterface 202-002Check mark ☒ applies to applicable instr. and/or detector IAW mfg. spec. T. 72 °F RH 43 % Alt 702.3 mm Hg☐ New Instrument ☐ Instrument Received ☒ Within Toler. $\pm 10\%$ ☐ 10-20% ☐ Out of Tol. ☐ Requiring Repair ☐ Other-See comments☒ Mechanical ck.☒ Meter Zeroed☐ Background Subtract☒ Input Sens. Linearity☒ F/S Resp. ck☒ Reset ck.☒ Window Operation☒ Geotropism☒ Audio ck.☐ Alarm Setting ck.☒ Batt. ck.☒ Calibrated in accordance with LMI SOP 14.8☐ Calibrated in accordance with LMI SOP 14.9Instrument Volt Set 750 V Input Sens. 26 mV Det. Oper. 750 V at 26 mV Threshold = mV☐ HV Readout (2 points) Ref./Inst. / V Ref./Inst. / V

COMMENTS:

Cs-137 ≈ 0.5 μ Ci check source SN N/A reads ≈ 700 cpm (70 kcpm @ x100) with flat end of 44-2 placed on the label side of the check source.

Gamma Calibration: GM detectors positioned perpendicular to source except for M 44-9 in which the front of probe faces source.

Multimeter uncertainty within 1.3% of reading, Gamma uncertainty within 3.0% of reading, Neutron uncertainty within 7.0% of reading, Count rate uncertainty within 5.4% of reading

RANGE/MULTIPLIER	REFERENCE CAL. POINT	INSTRUMENT REC'D "AS FOUND READING"	INSTRUMENT METER READING
X 100	400K cpm	4 1k cpm	4 1k cpm
X 100	100K cpm	4	4
X 10	40K cpm	4	4
X 10	10K cpm	4	4
X 1	4K cpm	4	4
X 1	1K cpm	4	4
X 0.1	400 cpm	4	4
X 0.1	100 cpm	4	4

ALL Range(s) Calibrated Electronically

Digital	REFERENCE CAL. POINT	INSTRUMENT RECEIVED	INSTRUMENT METER READING	Log	REFERENCE CAL. POINT	INSTRUMENT RECEIVED	INSTRUMENT METER READING
Readout				Scale			

Ludlum Measurements, Inc. certifies that the above instrument has been calibrated by standards traceable to the National Institute of Standards and Technology, or to the calibration facilities of other International Standards Organization members, or have been derived from accepted values of natural physical constants or have been derived by the ratio type of calibration techniques.

All pass/fail determinations are based on the manufacturer's specifications without considering uncertainty factors.

Measurement results represent expanded uncertainties expressed at approximately the 95% level of confidence, using a coverage factor of k=2.

ISO/IEC 17025:2017(E)
State of Texas Calibration License No. LO-1963Reference Instruments and/or Sources: Cs-137 S/N: ☐ 059 ☐ 2171CP ☐ 2261CP ☐ 720 ☐ 734 ☐ 781 ☐ 1131 ☐ 1616 ☐ 1696 ☐ 1909 ☐ 1916CP ☐ 2324/2521
☐ 5717CO ☐ 5719CO ☐ 60646 ☐ 70897 ☐ 73410 ☐ E552 ☐ G112 ☐ 2168CP ☐ S-394 ☐ S-1054 ☐ T10081 ☐ T10082 Neutron Am-241 Be ☐ T-304 Ra-226 ☐ Y982
☐ E551 ☐ 5105 ☐ CSV280☐ Alpha S/N ☐ Beta S/N ☐ Other ☒ m 500 S/N 189509 ☐ Oscilloscope S/N ☒ Multimeter S/N 50970100Calibrator Heather Crain Title Calibrator Date 24-Oct-23QC'd By Rudolph Title Final QC Date 25 Oct 23This certificate shall not be reproduced except in full, without the written approval of Ludlum Measurements, Inc.
FORM C22A 01/07/2020 Page 1 of 2AC Inst. ☐ Passed Dielectric (Hi-Pot) and Continuity Test
Only ☐ Failed:

District I
1625 N. French Dr., Hobbs, NM 88240
Phone:(575) 393-6161 Fax:(575) 393-0720
District II
811 S. First St., Artesia, NM 88210
Phone:(575) 748-1283 Fax:(575) 748-9720
District III
1000 Rio Brazos Rd., Aztec, NM 87410
Phone:(505) 334-6178 Fax:(505) 334-6170
District IV
1220 S. St Francis Dr., Santa Fe, NM 87505
Phone:(505) 476-3470 Fax:(505) 476-3462

State of New Mexico
Energy, Minerals and Natural Resources
Oil Conservation Division
1220 S. St Francis Dr.
Santa Fe, NM 87505

CONDITIONS

Action 351704

CONDITIONS

Operator: CANYON E & P COMPANY 251 O'Connor Ridge Blvd. Irving, TX 75038	OGRID: 269864
	Action Number: 351704
	Action Type: [IM-SD] Well File Support Doc (ENV) (IM-BWF)

CONDITIONS

Created By	Condition	Condition Date
crystal.walker	None	6/6/2024