

District I

1625 N. French Dr., Hobbs, NM 88240
Phone:(575) 393-6161 Fax:(575) 393-0720

District II

811 S. First St., Artesia, NM 88210
Phone:(575) 748-1283 Fax:(575) 748-9720

District III

1000 Rio Brazos Rd., Aztec, NM 87410
Phone:(505) 334-6178 Fax:(505) 334-6170

District IV

1220 S. St Francis Dr., Santa Fe, NM 87505
Phone:(505) 476-3470 Fax:(505) 476-3462

State of New Mexico
Energy, Minerals and Natural Resources
Oil Conservation Division
1220 S. St Francis Dr.
Santa Fe, NM 87505

Form C-101
August 1, 2011

Permit 365234

APPLICATION FOR PERMIT TO DRILL, RE-ENTER, DEEPEN, PLUGBACK, OR ADD A ZONE

1. Operator Name and Address Permian Resources Operating, LLC 300 N. Marienfeld St Ste 1000 Midland, TX 79701		2. OGRID Number 372165
		3. API Number 30-015-55143
4. Property Code 335406	5. Property Name BARNEY	6. Well No. 223H

7. Surface Location

UL - Lot F	Section 4	Township 22S	Range 27E	Lot Idn	Feet From 1419	N/S Line N	Feet From 1635	E/W Line W	County Eddy
---------------	--------------	-----------------	--------------	---------	-------------------	---------------	-------------------	---------------	----------------

8. Proposed Bottom Hole Location

UL - Lot L	Section 6	Township 22S	Range 27E	Lot Idn 6	Feet From 2310	N/S Line S	Feet From 100	E/W Line W	County Eddy
---------------	--------------	-----------------	--------------	--------------	-------------------	---------------	------------------	---------------	----------------

9. Pool Information

PURPLE SAGE;WOLFCAMP (GAS)	98220
----------------------------	-------

Additional Well Information

11. Work Type New Well	12. Well Type GAS	13. Cable/Rotary	14. Lease Type State	15. Ground Level Elevation 3163
16. Multiple N	17. Proposed Depth 17852	18. Formation Wolfcamp	19. Contractor	20. Spud Date 8/2/2024
Depth to Ground water		Distance from nearest fresh water well		Distance to nearest surface water

☒ We will be using a closed-loop system in lieu of lined pits

21. Proposed Casing and Cement Program

Type	Hole Size	Casing Size	Casing Weight/ft	Setting Depth	Sacks of Cement	Estimated TOC
Surf	17.5	13.375	54.5	300	250	0
Int1	12.25	9.625	40	1810	510	0
Prod	8.75	5.5	20	17853	2430	0

Casing/Cement Program: Additional Comments

--

22. Proposed Blowout Prevention Program

Type	Working Pressure	Test Pressure	Manufacturer
Double Ram	5000	5000	

23. I hereby certify that the information given above is true and complete to the best of my knowledge and belief. I further certify I have complied with 19.15.14.9 (A) NMAC <input checked="" type="checkbox"/> and/or 19.15.14.9 (B) NMAC <input checked="" type="checkbox"/> if applicable. Signature: Printed Name: Electronically filed by Stephanie Rabadue Title: Regulatory Manager Email Address: stephanie.rabadue@permianres.com Date: 5/14/2024	OIL CONSERVATION DIVISION		
		Phone: 432-260-4388	Approved By: Ward Rikala
			Title:
		Approved Date: 6/10/2024	Expiration Date: 6/10/2026
			Conditions of Approval Attached

District I
1625 N. French Dr., Hobbs, NM 88240
District II
811 S. First St., Artesia, NM 88210
District III
1000 Rio Brazos Road, Artec, NM 87410
District IV
1220 S. St Francis Dr., NM 87505
Phone: (505) 476-3460 Fax (505) 476-3462

State of New Mexico
Energy, Minerals & Natural Resources Department
OIL CONSERVATION DIVISION
1220 South St. Francis Dr.
Santa Fe, NM 87505

Form C-102

Revised August 1, 2011

Submit one copy to appropriate
District Office

☐ AMENDED REPORT

WELL LOCATION AND ACREAGE DEDICATION PLAT

¹ API Number 30-015-55143	² Pool Code 98220	³ Pool Name Purple Sage; Wolfcamp (GAS)
⁴ Property Code 335406	⁵ Property Name BARNEY	⁶ Well Number 223H
⁷ OGRID No. 372165	⁸ Operator Name PERMIAN RESOURCES OPERATING, LLC	⁹ Elevation 3,163'

¹⁰ Surface Location

UL or lot no.	Section	Township	Range	Lot Idn	Feet from the	North/South line	Feet from the	East/West line	County
F	4	22 S	27 E		1,419'	NORTH	1,635'	WEST	EDDY

¹¹ Bottom Hole Location If Different From Surface

UL or lot no.	Section	Township	Range	Lot Idn	Feet from the	North/South line	Feet from the	East/West line	County
LOT 6	6	22 S	27 E		2,310'	SOUTH	100'	WEST	EDDY

¹² Dedicated Acres 478.44	¹³ Joint or Infill	¹⁴ Consolidation Code	¹⁵ Order No.
--	-------------------------------	----------------------------------	-------------------------

No allowable will be assigned to this completion until all interests have been consolidated or a non-standard unit has been approved by the division.

¹⁶ SURFACE HOLE LOCATION
& KICK-OFF POINT
1,419' FNL & 1,635' FWL
ELEV. = 3,163.00'

NAD 83 X = 583,076.32'
NAD 83 Y = 518,438.98"
NAD 83 LAT = 32.425183°
NAD 83 LONG = -104.198059°
NAD 27 X = 541,895.08'
NAD 27 Y = 518,379.00'
NAD 27 LAT = 32.425064°
NAD 27 LONG = -104.197556°

FIRST TAKE POINT &
PENETRATION POINT 1
2,310' FSL & 2,540' FWL

NAD 83 X = 578,693.06'
NAD 83 Y = 516,898.36"
NAD 83 LAT = 32.420962°
NAD 83 LONG = -104.212271°
NAD 27 X = 537,511.83'
NAD 27 Y = 516,838.46"
NAD 27 LAT = 32.420844°
NAD 27 LONG = -104.211767°

LAST TAKE POINT &
BOTTOM HOLE LOCATION
2,310' FSL & 100' FWL

NAD 83 X = 570,993.78'
NAD 83 Y = 516,833.78"
NAD 83 LAT = 32.420806°
NAD 83 LONG = -104.237223°
NAD 27 X = 529,812.63'
NAD 27 Y = 516,773.96"
NAD 27 LAT = 32.420688°
NAD 27 LONG = -104.236718°

CORNER COORDINATES NEW MEXICO EAST - NAD 83	
A - CALCULATED CORNER	N:519,685.71' E:570,880.76'
B - CALCULATED CORNER	N:519,766.44' E:573,482.44'
C - 1/2" IRON ROD	N:519,847.17' E:576,084.12'
D - CALCULATED CORNER	N:519,859.02' E:578,746.76'
E - IRON PIPE W/ BRASS CAP	N:519,870.86' E:581,409.40'
F - 1/2" IRON ROD	N:517,282.02' E:581,466.79'
G - IRON PIPE W/ BRASS CAP	N:514,624.77' E:581,530.34'
H - CALCULATED CORNER	N:514,590.43' E:578,868.47'
I - CALCULATED CORNER	N:514,556.09' E:576,206.59'
J - CALCULATED CORNER	N:514,539.63' E:573,555.46'
K - CALCULATED CORNER	N:514,523.18' E:570,904.33'
L - CALCULATED CORNER	N:517,104.44' E:570,892.54'
M - CALCULATED CORNER	N:517,201.63' E:576,145.36'

¹⁷ OPERATOR CERTIFICATION

I hereby certify that the information contained herein is true and complete to the best of my knowledge and belief, and that this organization either owns a working interest or unleased mineral interest in the land including the proposed bottom hole location or has a right to drill this well at this location pursuant to a contract with an owner of such a mineral or working interest, or to a voluntary pooling agreement or a compulsory pooling order heretofore entered by the division.

Cassie Evans

5/9/24

Signature

Date

Cassie Evans

Printed Name

Cassie.Evans@permianres.com

Email Address

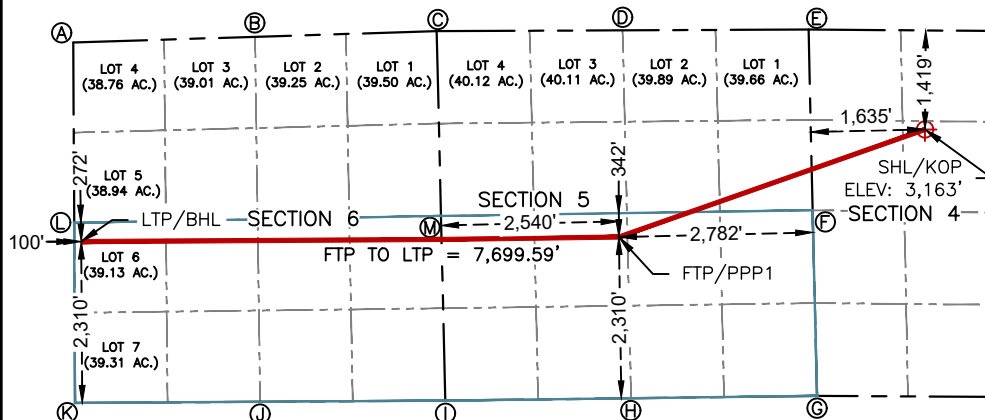
¹⁸ SURVEYOR CERTIFICATION

I hereby certify that the well location shown on this plat was plotted from field notes of actual surveys made by me or under my supervision, and that the same is true and correct to the best of my belief.

Date: 5/7/2024



MARK J. MURRAY P.L.S. NO. 12177



Intent ☒ As Drilled ☐

API #		
Operator Name: PERMIAN RESOURCES OPERATING, LLC	Property Name: BARNEY	Well Number 223H

Kick Off Point (KOP)

UL	Section	Township	Range	Lot	Feet	From N/S	Feet	From E/W	County
F	4	22 S	27 E		1,419'	N	1,635'	W	EDDY
Latitude 32.425183					Longitude -104.198059				NAD 83

First Take Point (FTP)

UL	Section	Township	Range	Lot	Feet	From N/S	Feet	From E/W	County
K	5	22 S	27 E		2,310'	S	2,782'	W	EDDY
Latitude 32.420962					Longitude -104.212271				NAD 83

Last Take Point (LTP)

UL	Section	Township	Range	Lot	Feet	From N/S	Feet	From E/W	County
L6	6	22 S	27 E		2,310'	S	100'	W	EDDY
Latitude 32.420806					Longitude -104.237223				NAD 83

Is this well the defining well for the Horizontal Spacing Unit?

☐ NO

Is this well an infill well?

☐ Yes

If infill is yes please provide API if available, Operator Name and well number for Defining well for Horizontal Spacing Unit.

API # 30-015-49097		
Operator Name: Permian Resources Operating LLC	Property Name: Barney	Well Number 404H

KZ 06/29/2018

District I
1625 N. French Dr., Hobbs, NM 88240
Phone:(575) 393-6161 Fax:(575) 393-0720

District II
811 S. First St., Artesia, NM 88210
Phone:(575) 748-1283 Fax:(575) 748-9720

District III
1000 Rio Brazos Rd., Aztec, NM 87410
Phone:(505) 334-6178 Fax:(505) 334-6170

District IV
1220 S. St Francis Dr., Santa Fe, NM 87505
Phone:(505) 476-3470 Fax:(505) 476-3462

State of New Mexico
Energy, Minerals and Natural Resources
Oil Conservation Division
1220 S. St Francis Dr.
Santa Fe, NM 87505

Form APD Comments

Permit 365234

PERMIT COMMENTS

Operator Name and Address: Permian Resources Operating, LLC [372165] 300 N. Marienfeld St Ste 1000 Midland, TX 79701		API Number: 30-015-55143
		Well: BARNEY #223H
Created By	Comment	Comment Date
ward.rikala	Given the close proximity to the Canyon Reef, if the Canyon Reef is encountered during the drilling of this well, then an additional intermediate casing string will be required. Additionally, only fresh water system can be used until well is below the aquifer. Then okay to swap to produced water system.	6/10/2024

District I
1625 N. French Dr., Hobbs, NM 88240
Phone:(575) 393-6161 Fax:(575) 393-0720
District II
811 S. First St., Artesia, NM 88210
Phone:(575) 748-1283 Fax:(575) 748-9720
District III
1000 Rio Brazos Rd., Aztec, NM 87410
Phone:(505) 334-6178 Fax:(505) 334-6170
District IV
1220 S. St Francis Dr., Santa Fe, NM 87505
Phone:(505) 476-3470 Fax:(505) 476-3462

State of New Mexico
Energy, Minerals and Natural Resources
Oil Conservation Division
1220 S. St Francis Dr.
Santa Fe, NM 87505

Form APD Conditions
Permit 365234

PERMIT CONDITIONS OF APPROVAL

Operator Name and Address: Permian Resources Operating, LLC [372165] 300 N. Marienfeld St Ste 1000 Midland, TX 79701		API Number: 30-015-55143
		Well: BARNEY #223H
OCD Reviewer	Condition	
ward.rikala	Notify OCD 24 hours prior to casing & cement	
ward.rikala	Will require a File As Drilled C-102 and a Directional Survey with the C-104	
ward.rikala	Once the well is spud, to prevent ground water contamination through whole or partial conduits from the surface, the operator shall drill without interruption through the fresh water zone or zones and shall immediately set in cement the water protection string	
ward.rikala	Cement is required to circulate on both surface and intermediate1 strings of casing	
ward.rikala	If cement does not circulate on any string, a CBL is required for that string of casing	
ward.rikala	Oil base muds are not to be used until fresh water zones are cased and cemented providing isolation from the oil or diesel. This includes synthetic oils. Oil based mud, drilling fluids and solids must be contained in a steel closed loop system	
ward.rikala	The Operator is to notify NMOCD by sundry (Form C-103) within ten (10) days of the well being spud	
ward.rikala	See comments. An additional intermediate casing string may be required if the Canyon Reef is encountered while drilling. Additionally, only fresh water system can be used until below Canyon Reef interval, then can swap to produced water system.	

State of New Mexico
Energy, Minerals and Natural Resources Department
Oil Conservation Division
1220 South St. Francis Dr.
Santa Fe, NM 87505

Submit Electronically
Via E-permitting

NATURAL GAS MANAGEMENT PLAN

This Natural Gas Management Plan must be submitted with each Application for Permit to Drill (APD) for a new or recompleted well.

Section 1 – Plan Description

Effective May 25, 2021

I. Operator: Permian Resources Operating, LLC **OGRID:** 372165 **Date:** 05/10/2024

II. Type: ☒ Original ☐ Amendment due to ☐ 19.15.27.9.D(6)(a) NMAC ☐ 19.15.27.9.D(6)(b) NMAC ☐ Other.

If Other, please describe: _____

III. Well(s): Provide the following information for each new or recompleted well or set of wells proposed to be drilled or proposed to be recompleted from a single well pad or connected to a central delivery point.

Well Name	API	ULSTR	Footages	Anticipated Oil BBL/D	Anticipated Gas MCF/D	Anticipated Produced Water BBL/D
██████████	██████	██████████	██████████	██████	██████	██████
██████████	██████	██████████	██████████	██████	██████	██████
██████████	██████	██████████	██████████	██████	██████	██████
██████████	██████	██████████	██████████	██████	██████	██████
██████████	██████	██████████	██████████	██████	██████	██████

IV. Central Delivery Point Name: Betty/Barney CTB [See 19.15.27.9(D)(1) NMAC]

V. Anticipated Schedule: Provide the following information for each new or recompleted well or set of wells proposed to be drilled or proposed to be recompleted from a single well pad or connected to a central delivery point.

Well Name	API	Spud Date	TD Reached Date	Completion Commencement Date	Initial Flow Back Date	First Production Date
Barney 223H	TBD	<u>8/5/24</u>	<u>TBD</u>	<u>TBD</u>	<u>TBD</u>	<u>TBD</u>
Barney 423H	TBD	<u>8/5/24</u>	<u>TBD</u>	<u>TBD</u>	<u>TBD</u>	<u>TBD</u>
Betty 221H	TBD	<u>8/5/24</u>	<u>TBD</u>	<u>TBD</u>	<u>TBD</u>	<u>TBD</u>
Betty 222H	TBD	<u>8/5/24</u>	<u>TBD</u>	<u>TBD</u>	<u>TBD</u>	<u>TBD</u>
Betty 421H	TBD	<u>8/5/24</u>	<u>TBD</u>	<u>TBD</u>	<u>TBD</u>	<u>TBD</u>

VI. Separation Equipment: ☒ Attach a complete description of how Operator will size separation equipment to optimize gas capture.

VII. Operational Practices: ☒ Attach a complete description of the actions Operator will take to comply with the requirements of Subsection A through F of 19.15.27.8 NMAC.

VIII. Best Management Practices: ☒ Attach a complete description of Operator's best management practices to minimize venting during active and planned maintenance.

Section 2 – Enhanced Plan
EFFECTIVE APRIL 1, 2022

Beginning April 1, 2022, an operator that is not in compliance with its statewide natural gas capture requirement for the applicable reporting area must complete this section.

☐ Operator certifies that it is not required to complete this section because Operator is in compliance with its statewide natural gas capture requirement for the applicable reporting area.

IX. Anticipated Natural Gas Production:

Well	API	Anticipated Average Natural Gas Rate MCF/D	Anticipated Volume of Natural Gas for the First Year MCF
██████████		████	██████
██████████		████	██████
██████████		████	██████
██████████		████	██████
██████████		████	██████

X. Natural Gas Gathering System (NGGS):

Operator	System	ULSTR of Tie-in	Anticipated Gathering Start Date	Available Maximum Daily Capacity of System Segment Tie-in

XI. Map. ☒ Attach an accurate and legible map depicting the location of the well(s), the anticipated pipeline route(s) connecting the production operations to the existing or planned interconnect of the natural gas gathering system(s), and the maximum daily capacity of the segment or portion of the natural gas gathering system(s) to which the well(s) will be connected.

XII. Line Capacity. The natural gas gathering system ☐ will ☒ will not have capacity to gather 100% of the anticipated natural gas production volume from the well prior to the date of first production.

XIII. Line Pressure. Operator ☒ does ☐ does not anticipate that its existing well(s) connected to the same segment, or portion, of the natural gas gathering system(s) described above will continue to meet anticipated increases in line pressure caused by the new well(s).

☒ Attach Operator's plan to manage production in response to the increased line pressure.

XIV. Confidentiality: ☒ Operator asserts confidentiality pursuant to Section 71-2-8 NMSA 1978 for the information provided in Section 2 as provided in Paragraph (2) of Subsection D of 19.15.27.9 NMAC, and attaches a full description of the specific information for which confidentiality is asserted and the basis for such assertion.

Section 3 - Certifications

Effective May 25, 2021

Operator certifies that, after reasonable inquiry and based on the available information at the time of submittal:

☐ Operator will be able to connect the well(s) to a natural gas gathering system in the general area with sufficient capacity to transport one hundred percent of the anticipated volume of natural gas produced from the well(s) commencing on the date of first production, taking into account the current and anticipated volumes of produced natural gas from other wells connected to the pipeline gathering system; or

☒ Operator will not be able to connect to a natural gas gathering system in the general area with sufficient capacity to transport one hundred percent of the anticipated volume of natural gas produced from the well(s) commencing on the date of first production, taking into account the current and anticipated volumes of produced natural gas from other wells connected to the pipeline gathering system.

If Operator checks this box, Operator will select one of the following:

Well Shut-In. ☒ Operator will shut-in and not produce the well until it submits the certification required by Paragraph (4) of Subsection D of 19.15.27.9 NMAC; or

Venting and Flaring Plan. ☐ Operator has attached a venting and flaring plan that evaluates and selects one or more of the potential alternative beneficial uses for the natural gas until a natural gas gathering system is available, including:

- (a) power generation on lease;
- (b) power generation for grid;
- (c) compression on lease;
- (d) liquids removal on lease;
- (e) reinjection for underground storage;
- (f) reinjection for temporary storage;
- (g) reinjection for enhanced oil recovery;
- (h) fuel cell production; and
- (i) other alternative beneficial uses approved by the division.

Section 4 - Notices

1. If, at any time after Operator submits this Natural Gas Management Plan and before the well is spud:

(a) Operator becomes aware that the natural gas gathering system it planned to connect the well(s) to has become unavailable or will not have capacity to transport one hundred percent of the production from the well(s), no later than 20 days after becoming aware of such information, Operator shall submit for OCD's approval a new or revised venting and flaring plan containing the information specified in Paragraph (5) of Subsection D of 19.15.27.9 NMAC; or

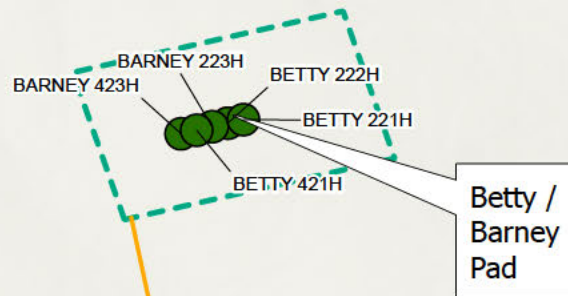
(b) Operator becomes aware that it has, cumulatively for the year, become out of compliance with its baseline natural gas capture rate or natural gas capture requirement, no later than 20 days after becoming aware of such information, Operator shall submit for OCD's approval a new or revised Natural Gas Management Plan for each well it plans to spud during the next 90 days containing the information specified in Paragraph (2) of Subsection D of 19.15.27.9 NMAC, and shall file an update for each Natural Gas Management Plan until Operator is back in compliance with its baseline natural gas capture rate or natural gas capture requirement.

2. OCD may deny or conditionally approve an APD if Operator does not make a certification, fails to submit an adequate venting and flaring plan which includes alternative beneficial uses for the anticipated volume of natural gas produced, or if OCD determines that Operator will not have adequate natural gas takeaway capacity at the time a well will be spud.

I certify that, after reasonable inquiry, the statements in and attached to this Natural Gas Management Plan are true and correct to the best of my knowledge and acknowledge that a false statement may be subject to civil and criminal penalties under the Oil and Gas Act.

Signature: <i>Cassie Evans</i>
Printed Name: Cassie Evans
Title: Regulatory Specialist
E-mail Address: Cassie.Evans@permianres.com
Date: 5/10/24
Phone: 432-313-1732
OIL CONSERVATION DIVISION (Only applicable when submitted as a standalone form)
Approved By:
Title:
Approval Date:
Conditions of Approval:

167244



22S
27E
Sec: 4

3126 ft

3124 ft

Betty /
Barney CTB

Maximum Daily
Capacity: TBD

Location Map



- CTB Facility
- SHL
- Flowlines
- Well Pad
- Est. Gas Takeaway



0 100 200 400 Feet

Spatial Reference
Name: GCS North American 1983
GCS: GCS North American 1983
Datum: North American 1983
Map Units: Degree

This map and its contents are not a legal surveyed document. It is meant for the use of Permian Resources and its employees and cannot be shared without expressed written authorization.

PERMIAN
RESOURCES



NM APD NGMP
Betty 221H/222H/421H
Barney 223H/423H

Eddy County, New Mexico

Created Date: 5/8/2024 Revised Date: 5/8/2024

Author: A. Brown Drafter: T. Douglass

File: 167244.ctb

NEW MEXICO

**(SP) EDDY
BETTY & BARNEY
BARNEY 223H**

OWB

Plan: PWP0

Standard Planning Report - Geographic

02 May, 2024

Planning Report - Geographic

Database:	Compass	Local Co-ordinate Reference:	Well BARNEY 223H
Company:	NEW MEXICO	TVD Reference:	KB @ 3155.0usft
Project:	(SP) EDDY	MD Reference:	KB @ 3155.0usft
Site:	BETTY & BARNEY	North Reference:	Grid
Well:	BARNEY 223H	Survey Calculation Method:	Minimum Curvature
Wellbore:	OWB		
Design:	PWP0		

Project	(SP) EDDY		
Map System:	US State Plane 1983	System Datum:	Mean Sea Level
Geo Datum:	North American Datum 1983		
Map Zone:	New Mexico Eastern Zone		

Site	BETTY & BARNEY		
Site Position:		Northing:	515,425.82 usft
From:	Map	Easting:	580,274.89 usft
Position Uncertainty:	0.0 usft	Slot Radius:	13-3/16 "
		Latitude:	32° 25' 0.874 N
		Longitude:	104° 12' 25.739 W

Well	BARNEY 223H		
Well Position	+N/-S	0.0 usft	Northing:
	+E/-W	0.0 usft	Easting:
Position Uncertainty	0.0 usft	Wellhead Elevation:	
Grid Convergence:	0.07 °		
		Latitude:	32° 25' 30.657 N
		Longitude:	104° 11' 53.012 W
		Ground Level:	3,125.0 usft

Wellbore	OWB		
Magnetics	Model Name	Sample Date	Declination
			(°)
	IGRF200510	12/31/2009	8.05
			Dip Angle
			(°)
			60.32
			Field Strength
			(nT)
			48,846.08696647

Design	PWP0		
Audit Notes:			
Version:	Phase:	PROTOTYPE	Tie On Depth:
			0.0
Vertical Section:	Depth From (TVD)	+N/-S	+E/-W
	(usft)	(usft)	(usft)
	0.0	0.0	0.0
			Direction
			(°)
			262.44

Plan Survey Tool Program	Date 5/2/2024		
Depth From	Depth To	Survey (Wellbore)	Tool Name
(usft)	(usft)		
1	0.0	17,852.5 PWP0 (OWB)	MWD
			OWSG_Rev2_ MWD - Star

Plan Sections										
Measured	Inclination	Azimuth	Vertical	+N/-S	+E/-W	Dogleg	Build	Turn	TFO	Target
Depth	(°)	(°)	Depth	(usft)	(usft)	Rate	Rate	Rate	(°)	
(usft)			(usft)			(°/100usft)	(°/100usft)	(°/100usft)		
0.0	0.00	0.00	0.0	0.0	0.0	0.00	0.00	0.00	0.00	
1,000.0	0.00	0.00	1,000.0	0.0	0.0	0.00	0.00	0.00	0.00	
2,682.5	33.65	250.66	2,587.4	-159.0	-452.9	2.00	2.00	0.00	250.66	
9,933.0	33.65	250.66	8,623.0	-1,489.4	-4,243.9	0.00	0.00	0.00	0.00	
10,419.4	90.00	269.52	8,845.0	-1,540.6	-4,650.0	12.00	11.58	3.88	22.31	
17,852.5	90.00	269.52	8,845.0	-1,603.0	-12,082.8	0.00	0.00	0.00	0.00	BHL-BARNEY 223

Permian Resources

Planning Report - Geographic

Database:	Compass	Local Co-ordinate Reference:	Well BARNEY 223H
Company:	NEW MEXICO	TVD Reference:	KB @ 3155.0usft
Project:	(SP) EDDY	MD Reference:	KB @ 3155.0usft
Site:	BETTY & BARNEY	North Reference:	Grid
Well:	BARNEY 223H	Survey Calculation Method:	Minimum Curvature
Wellbore:	OWB		
Design:	PWPO		

Planned Survey									
Measured Depth (usft)	Inclination (°)	Azimuth (°)	Vertical Depth (usft)	+N/-S (usft)	+E/-W (usft)	Map Northing (usft)	Map Easting (usft)	Latitude	Longitude
0.0	0.00	0.00	0.0	0.0	0.0	518,438.98	583,076.32	32° 25' 30.657 N	104° 11' 53.012 W
100.0	0.00	0.00	100.0	0.0	0.0	518,438.98	583,076.32	32° 25' 30.657 N	104° 11' 53.012 W
200.0	0.00	0.00	200.0	0.0	0.0	518,438.98	583,076.32	32° 25' 30.657 N	104° 11' 53.012 W
300.0	0.00	0.00	300.0	0.0	0.0	518,438.98	583,076.32	32° 25' 30.657 N	104° 11' 53.012 W
400.0	0.00	0.00	400.0	0.0	0.0	518,438.98	583,076.32	32° 25' 30.657 N	104° 11' 53.012 W
500.0	0.00	0.00	500.0	0.0	0.0	518,438.98	583,076.32	32° 25' 30.657 N	104° 11' 53.012 W
600.0	0.00	0.00	600.0	0.0	0.0	518,438.98	583,076.32	32° 25' 30.657 N	104° 11' 53.012 W
700.0	0.00	0.00	700.0	0.0	0.0	518,438.98	583,076.32	32° 25' 30.657 N	104° 11' 53.012 W
800.0	0.00	0.00	800.0	0.0	0.0	518,438.98	583,076.32	32° 25' 30.657 N	104° 11' 53.012 W
900.0	0.00	0.00	900.0	0.0	0.0	518,438.98	583,076.32	32° 25' 30.657 N	104° 11' 53.012 W
1,000.0	0.00	0.00	1,000.0	0.0	0.0	518,438.98	583,076.32	32° 25' 30.657 N	104° 11' 53.012 W
Start Build 2.00									
1,100.0	2.00	250.66	1,100.0	-0.6	-1.6	518,438.40	583,074.68	32° 25' 30.651 N	104° 11' 53.031 W
1,200.0	4.00	250.66	1,199.8	-2.3	-6.6	518,436.67	583,069.74	32° 25' 30.634 N	104° 11' 53.089 W
1,300.0	6.00	250.66	1,299.5	-5.2	-14.8	518,433.78	583,061.51	32° 25' 30.606 N	104° 11' 53.185 W
1,400.0	8.00	250.66	1,398.7	-9.2	-26.3	518,429.75	583,050.02	32° 25' 30.566 N	104° 11' 53.319 W
1,500.0	10.00	250.66	1,497.5	-14.4	-41.1	518,424.57	583,035.26	32° 25' 30.515 N	104° 11' 53.491 W
1,600.0	12.00	250.66	1,595.6	-20.7	-59.1	518,418.25	583,017.25	32° 25' 30.453 N	104° 11' 53.701 W
1,700.0	14.00	250.66	1,693.1	-28.2	-80.3	518,410.80	582,996.03	32° 25' 30.379 N	104° 11' 53.949 W
1,800.0	16.00	250.66	1,789.6	-36.8	-104.7	518,402.23	582,971.61	32° 25' 30.295 N	104° 11' 54.234 W
1,900.0	18.00	250.66	1,885.3	-46.4	-132.3	518,392.55	582,944.02	32° 25' 30.199 N	104° 11' 54.556 W
2,000.0	20.00	250.66	1,979.8	-57.2	-163.0	518,381.77	582,913.30	32° 25' 30.093 N	104° 11' 54.915 W
2,100.0	22.00	250.66	2,073.2	-69.1	-196.8	518,369.90	582,879.49	32° 25' 29.976 N	104° 11' 55.310 W
2,200.0	24.00	250.66	2,165.2	-82.0	-233.7	518,356.96	582,842.62	32° 25' 29.848 N	104° 11' 55.740 W
2,300.0	26.00	250.66	2,255.8	-96.0	-273.6	518,342.97	582,802.75	32° 25' 29.710 N	104° 11' 56.205 W
2,400.0	28.00	250.66	2,344.9	-111.0	-316.4	518,327.93	582,759.91	32° 25' 29.562 N	104° 11' 56.705 W
2,500.0	30.00	250.66	2,432.4	-127.1	-362.2	518,311.88	582,714.17	32° 25' 29.404 N	104° 11' 57.239 W
2,600.0	32.00	250.66	2,518.1	-144.2	-410.7	518,294.82	582,665.58	32° 25' 29.236 N	104° 11' 57.806 W
2,682.5	33.65	250.66	2,587.4	-159.0	-452.9	518,280.01	582,623.38	32° 25' 29.090 N	104° 11' 58.299 W
Start 7250.5 hold at 2682.5 MD									
2,700.0	33.65	250.66	2,602.0	-162.2	-462.1	518,276.80	582,614.23	32° 25' 29.058 N	104° 11' 58.406 W
2,800.0	33.65	250.66	2,685.2	-180.5	-514.4	518,258.45	582,561.94	32° 25' 28.877 N	104° 11' 59.016 W
2,900.0	33.65	250.66	2,768.5	-198.9	-566.7	518,240.10	582,509.66	32° 25' 28.696 N	104° 11' 59.626 W
3,000.0	33.65	250.66	2,851.7	-217.2	-618.9	518,221.75	582,457.37	32° 25' 28.515 N	104° 12' 0.237 W
3,100.0	33.65	250.66	2,935.0	-235.6	-671.2	518,203.40	582,405.09	32° 25' 28.334 N	104° 12' 0.847 W
3,200.0	33.65	250.66	3,018.2	-253.9	-723.5	518,185.05	582,352.80	32° 25' 28.153 N	104° 12' 1.457 W
3,300.0	33.65	250.66	3,101.5	-272.3	-775.8	518,166.70	582,300.52	32° 25' 27.972 N	104° 12' 2.068 W
3,400.0	33.65	250.66	3,184.7	-290.6	-828.1	518,148.35	582,248.23	32° 25' 27.791 N	104° 12' 2.678 W
3,500.0	33.65	250.66	3,267.9	-309.0	-880.4	518,130.00	582,195.95	32° 25' 27.610 N	104° 12' 3.288 W
3,600.0	33.65	250.66	3,351.2	-327.3	-932.7	518,111.65	582,143.66	32° 25' 27.429 N	104° 12' 3.898 W
3,700.0	33.65	250.66	3,434.4	-345.7	-984.9	518,093.30	582,091.38	32° 25' 27.249 N	104° 12' 4.509 W
3,800.0	33.65	250.66	3,517.7	-364.0	-1,037.2	518,074.95	582,039.09	32° 25' 27.068 N	104° 12' 5.119 W
3,900.0	33.65	250.66	3,600.9	-382.4	-1,089.5	518,056.60	581,986.81	32° 25' 26.887 N	104° 12' 5.729 W
4,000.0	33.65	250.66	3,684.2	-400.7	-1,141.8	518,038.25	581,934.52	32° 25' 26.706 N	104° 12' 6.340 W
4,100.0	33.65	250.66	3,767.4	-419.1	-1,194.1	518,019.90	581,882.24	32° 25' 26.525 N	104° 12' 6.950 W
4,200.0	33.65	250.66	3,850.7	-437.4	-1,246.4	518,001.55	581,829.95	32° 25' 26.344 N	104° 12' 7.560 W
4,300.0	33.65	250.66	3,933.9	-455.8	-1,298.7	517,983.20	581,777.67	32° 25' 26.163 N	104° 12' 8.171 W
4,400.0	33.65	250.66	4,017.1	-474.1	-1,350.9	517,964.85	581,725.38	32° 25' 25.982 N	104° 12' 8.781 W
4,500.0	33.65	250.66	4,100.4	-492.5	-1,403.2	517,946.50	581,673.10	32° 25' 25.801 N	104° 12' 9.391 W
4,600.0	33.65	250.66	4,183.6	-510.8	-1,455.5	517,928.15	581,620.81	32° 25' 25.620 N	104° 12' 10.001 W
4,700.0	33.65	250.66	4,266.9	-529.2	-1,507.8	517,909.80	581,568.53	32° 25' 25.439 N	104° 12' 10.612 W
4,800.0	33.65	250.66	4,350.1	-547.5	-1,560.1	517,891.45	581,516.24	32° 25' 25.258 N	104° 12' 11.222 W
4,900.0	33.65	250.66	4,433.4	-565.9	-1,612.4	517,873.10	581,463.95	32° 25' 25.077 N	104° 12' 11.832 W
5,000.0	33.65	250.66	4,516.6	-584.2	-1,664.7	517,854.75	581,411.67	32° 25' 24.896 N	104° 12' 12.443 W

Permian Resources

Planning Report - Geographic

Database:	Compass	Local Co-ordinate Reference:	Well BARNEY 223H
Company:	NEW MEXICO	TVD Reference:	KB @ 3155.0usft
Project:	(SP) EDDY	MD Reference:	KB @ 3155.0usft
Site:	BETTY & BARNEY	North Reference:	Grid
Well:	BARNEY 223H	Survey Calculation Method:	Minimum Curvature
Wellbore:	OWB		
Design:	PWPO		

Planned Survey										
Measured Depth (usft)	Inclination (°)	Azimuth (°)	Vertical Depth (usft)	+N/-S (usft)	+E/-W (usft)	Map Northing (usft)	Map Easting (usft)	Latitude	Longitude	
5,100.0	33.65	250.66	4,599.9	-602.6	-1,716.9	517,836.40	581,359.38	32° 25' 24.715 N	104° 12' 13.053 W	
5,200.0	33.65	250.66	4,683.1	-620.9	-1,769.2	517,818.05	581,307.10	32° 25' 24.534 N	104° 12' 13.663 W	
5,300.0	33.65	250.66	4,766.3	-639.3	-1,821.5	517,799.70	581,254.81	32° 25' 24.353 N	104° 12' 14.273 W	
5,400.0	33.65	250.66	4,849.6	-657.6	-1,873.8	517,781.35	581,202.53	32° 25' 24.172 N	104° 12' 14.884 W	
5,500.0	33.65	250.66	4,932.8	-676.0	-1,926.1	517,763.00	581,150.24	32° 25' 23.991 N	104° 12' 15.494 W	
5,600.0	33.65	250.66	5,016.1	-694.3	-1,978.4	517,744.65	581,097.96	32° 25' 23.810 N	104° 12' 16.104 W	
5,700.0	33.65	250.66	5,099.3	-712.7	-2,030.6	517,726.30	581,045.67	32° 25' 23.629 N	104° 12' 16.715 W	
5,800.0	33.65	250.66	5,182.6	-731.0	-2,082.9	517,707.95	580,993.39	32° 25' 23.448 N	104° 12' 17.325 W	
5,900.0	33.65	250.66	5,265.8	-749.4	-2,135.2	517,689.60	580,941.10	32° 25' 23.267 N	104° 12' 17.935 W	
6,000.0	33.65	250.66	5,349.0	-767.7	-2,187.5	517,671.25	580,888.82	32° 25' 23.086 N	104° 12' 18.545 W	
6,100.0	33.65	250.66	5,432.3	-786.1	-2,239.8	517,652.90	580,836.53	32° 25' 22.906 N	104° 12' 19.156 W	
6,200.0	33.65	250.66	5,515.5	-804.4	-2,292.1	517,634.55	580,784.25	32° 25' 22.725 N	104° 12' 19.766 W	
6,300.0	33.65	250.66	5,598.8	-822.8	-2,344.4	517,616.20	580,731.96	32° 25' 22.544 N	104° 12' 20.376 W	
6,400.0	33.65	250.66	5,682.0	-841.1	-2,396.6	517,597.84	580,679.68	32° 25' 22.363 N	104° 12' 20.986 W	
6,500.0	33.65	250.66	5,765.3	-859.5	-2,448.9	517,579.49	580,627.39	32° 25' 22.182 N	104° 12' 21.597 W	
6,600.0	33.65	250.66	5,848.5	-877.8	-2,501.2	517,561.14	580,575.11	32° 25' 22.001 N	104° 12' 22.207 W	
6,700.0	33.65	250.66	5,931.8	-896.2	-2,553.5	517,542.79	580,522.82	32° 25' 21.820 N	104° 12' 22.817 W	
6,800.0	33.65	250.66	6,015.0	-914.5	-2,605.8	517,524.44	580,470.54	32° 25' 21.639 N	104° 12' 23.428 W	
6,900.0	33.65	250.66	6,098.2	-932.9	-2,658.1	517,506.09	580,418.25	32° 25' 21.458 N	104° 12' 24.038 W	
7,000.0	33.65	250.66	6,181.5	-951.2	-2,710.4	517,487.74	580,365.97	32° 25' 21.277 N	104° 12' 24.648 W	
7,100.0	33.65	250.66	6,264.7	-969.6	-2,762.6	517,469.39	580,313.68	32° 25' 21.096 N	104° 12' 25.258 W	
7,200.0	33.65	250.66	6,348.0	-987.9	-2,814.9	517,451.04	580,261.40	32° 25' 20.915 N	104° 12' 25.869 W	
7,300.0	33.65	250.66	6,431.2	-1,006.3	-2,867.2	517,432.69	580,209.11	32° 25' 20.734 N	104° 12' 26.479 W	
7,400.0	33.65	250.66	6,514.5	-1,024.6	-2,919.5	517,414.34	580,156.83	32° 25' 20.553 N	104° 12' 27.089 W	
7,500.0	33.65	250.66	6,597.7	-1,043.0	-2,971.8	517,395.99	580,104.54	32° 25' 20.372 N	104° 12' 27.699 W	
7,600.0	33.65	250.66	6,680.9	-1,061.3	-3,024.1	517,377.64	580,052.25	32° 25' 20.191 N	104° 12' 28.310 W	
7,700.0	33.65	250.66	6,764.2	-1,079.7	-3,076.4	517,359.29	579,999.97	32° 25' 20.010 N	104° 12' 28.920 W	
7,800.0	33.65	250.66	6,847.4	-1,098.0	-3,128.6	517,340.94	579,947.68	32° 25' 19.829 N	104° 12' 29.530 W	
7,900.0	33.65	250.66	6,930.7	-1,116.4	-3,180.9	517,322.59	579,895.40	32° 25' 19.648 N	104° 12' 30.141 W	
8,000.0	33.65	250.66	7,013.9	-1,134.7	-3,233.2	517,304.24	579,843.11	32° 25' 19.467 N	104° 12' 30.751 W	
8,100.0	33.65	250.66	7,097.2	-1,153.1	-3,285.5	517,285.89	579,790.83	32° 25' 19.286 N	104° 12' 31.361 W	
8,200.0	33.65	250.66	7,180.4	-1,171.4	-3,337.8	517,267.54	579,738.54	32° 25' 19.105 N	104° 12' 31.971 W	
8,300.0	33.65	250.66	7,263.7	-1,189.8	-3,390.1	517,249.19	579,686.26	32° 25' 18.924 N	104° 12' 32.582 W	
8,400.0	33.65	250.66	7,346.9	-1,208.1	-3,442.3	517,230.84	579,633.97	32° 25' 18.743 N	104° 12' 33.192 W	
8,500.0	33.65	250.66	7,430.1	-1,226.5	-3,494.6	517,212.49	579,581.69	32° 25' 18.562 N	104° 12' 33.802 W	
8,600.0	33.65	250.66	7,513.4	-1,244.8	-3,546.9	517,194.14	579,529.40	32° 25' 18.381 N	104° 12' 34.412 W	
8,700.0	33.65	250.66	7,596.6	-1,263.2	-3,599.2	517,175.79	579,477.12	32° 25' 18.200 N	104° 12' 35.023 W	
8,800.0	33.65	250.66	7,679.9	-1,281.5	-3,651.5	517,157.44	579,424.83	32° 25' 18.019 N	104° 12' 35.633 W	
8,900.0	33.65	250.66	7,763.1	-1,299.9	-3,703.8	517,139.09	579,372.55	32° 25' 17.838 N	104° 12' 36.243 W	
9,000.0	33.65	250.66	7,846.4	-1,318.2	-3,756.1	517,120.74	579,320.26	32° 25' 17.657 N	104° 12' 36.853 W	
9,100.0	33.65	250.66	7,929.6	-1,336.6	-3,808.3	517,102.39	579,267.98	32° 25' 17.476 N	104° 12' 37.464 W	
9,200.0	33.65	250.66	8,012.8	-1,354.9	-3,860.6	517,084.04	579,215.69	32° 25' 17.295 N	104° 12' 38.074 W	
9,300.0	33.65	250.66	8,096.1	-1,373.3	-3,912.9	517,065.69	579,163.41	32° 25' 17.114 N	104° 12' 38.684 W	
9,400.0	33.65	250.66	8,179.3	-1,391.6	-3,965.2	517,047.34	579,111.12	32° 25' 16.933 N	104° 12' 39.294 W	
9,500.0	33.65	250.66	8,262.6	-1,410.0	-4,017.5	517,028.99	579,058.84	32° 25' 16.752 N	104° 12' 39.905 W	
9,600.0	33.65	250.66	8,345.8	-1,428.3	-4,069.8	517,010.64	579,006.55	32° 25' 16.571 N	104° 12' 40.515 W	
9,700.0	33.65	250.66	8,429.1	-1,446.7	-4,122.1	516,992.29	578,954.27	32° 25' 16.390 N	104° 12' 41.125 W	
9,800.0	33.65	250.66	8,512.3	-1,465.0	-4,174.3	516,973.94	578,901.98	32° 25' 16.209 N	104° 12' 41.736 W	
9,900.0	33.65	250.66	8,595.6	-1,483.4	-4,226.6	516,955.59	578,849.70	32° 25' 16.028 N	104° 12' 42.346 W	
9,933.0	33.65	250.66	8,623.0	-1,489.4	-4,243.9	516,949.54	578,832.46	32° 25' 15.968 N	104° 12' 42.547 W	
Start DLS 12.00 TFO 22.31										
9,950.0	35.55	252.00	8,637.0	-1,492.5	-4,253.0	516,946.44	578,823.30	32° 25' 15.938 N	104° 12' 42.654 W	
9,975.0	38.36	253.74	8,657.0	-1,497.0	-4,267.4	516,942.02	578,808.93	32° 25' 15.894 N	104° 12' 42.822 W	
10,000.0	41.19	255.29	8,676.2	-1,501.2	-4,282.8	516,937.76	578,793.52	32° 25' 15.852 N	104° 12' 43.001 W	

Permian Resources

Planning Report - Geographic

Database:	Compass	Local Co-ordinate Reference:	Well BARNEY 223H
Company:	NEW MEXICO	TVD Reference:	KB @ 3155.0usft
Project:	(SP) EDDY	MD Reference:	KB @ 3155.0usft
Site:	BETTY & BARNEY	North Reference:	Grid
Well:	BARNEY 223H	Survey Calculation Method:	Minimum Curvature
Wellbore:	OWB		
Design:	PWPO		

Planned Survey										
Measured Depth (usft)	Inclination (°)	Azimuth (°)	Vertical Depth (usft)	+N/-S (usft)	+E/-W (usft)	Map Northing (usft)	Map Easting (usft)	Latitude	Longitude	
10,025.0	44.04	256.67	8,694.6	-1,505.3	-4,299.2	516,933.67	578,777.10	32° 25' 15.812 N	104° 12' 43.193 W	
10,050.0	46.91	257.91	8,712.1	-1,509.2	-4,316.6	516,929.75	578,759.71	32° 25' 15.773 N	104° 12' 43.396 W	
10,075.0	49.79	259.04	8,728.7	-1,513.0	-4,334.9	516,926.02	578,741.41	32° 25' 15.737 N	104° 12' 43.610 W	
10,100.0	52.68	260.08	8,744.4	-1,516.5	-4,354.1	516,922.49	578,722.24	32° 25' 15.702 N	104° 12' 43.833 W	
10,125.0	55.57	261.04	8,759.0	-1,519.8	-4,374.1	516,919.17	578,702.26	32° 25' 15.669 N	104° 12' 44.066 W	
10,150.0	58.48	261.94	8,772.6	-1,522.9	-4,394.8	516,916.07	578,681.52	32° 25' 15.639 N	104° 12' 44.308 W	
10,175.0	61.39	262.78	8,785.2	-1,525.8	-4,416.2	516,913.20	578,660.08	32° 25' 15.611 N	104° 12' 44.559 W	
10,200.0	64.30	263.58	8,796.6	-1,528.4	-4,438.3	516,910.56	578,637.99	32° 25' 15.585 N	104° 12' 44.816 W	
10,225.0	67.22	264.34	8,806.8	-1,530.8	-4,461.0	516,908.16	578,615.33	32° 25' 15.561 N	104° 12' 45.081 W	
10,250.0	70.15	265.06	8,815.9	-1,533.0	-4,484.2	516,906.01	578,592.14	32° 25' 15.540 N	104° 12' 45.351 W	
10,275.0	73.07	265.76	8,823.8	-1,534.9	-4,507.8	516,904.11	578,568.49	32° 25' 15.522 N	104° 12' 45.627 W	
10,300.0	76.00	266.44	8,830.5	-1,536.5	-4,531.9	516,902.48	578,544.46	32° 25' 15.506 N	104° 12' 45.908 W	
10,325.0	78.93	267.11	8,835.9	-1,537.9	-4,556.2	516,901.10	578,520.10	32° 25' 15.493 N	104° 12' 46.192 W	
10,350.0	81.86	267.76	8,840.1	-1,539.0	-4,580.8	516,900.00	578,495.47	32° 25' 15.482 N	104° 12' 46.479 W	
10,375.0	84.79	268.40	8,843.0	-1,539.8	-4,605.7	516,899.17	578,470.66	32° 25' 15.474 N	104° 12' 46.769 W	
10,400.0	87.72	269.03	8,844.6	-1,540.4	-4,630.6	516,898.61	578,445.72	32° 25' 15.469 N	104° 12' 47.060 W	
10,419.4	90.00	269.52	8,845.0	-1,540.6	-4,650.0	516,898.36	578,426.32	32° 25' 15.467 N	104° 12' 47.286 W	
Start 7433.1 hold at 10419.4 MD										
10,500.0	90.00	269.52	8,845.0	-1,541.3	-4,730.6	516,897.69	578,345.73	32° 25' 15.461 N	104° 12' 48.226 W	
10,600.0	90.00	269.52	8,845.0	-1,542.1	-4,830.6	516,896.85	578,245.74	32° 25' 15.454 N	104° 12' 49.393 W	
10,700.0	90.00	269.52	8,845.0	-1,543.0	-4,930.6	516,896.01	578,145.74	32° 25' 15.446 N	104° 12' 50.560 W	
10,800.0	90.00	269.52	8,845.0	-1,543.8	-5,030.6	516,895.17	578,045.74	32° 25' 15.439 N	104° 12' 51.726 W	
10,900.0	90.00	269.52	8,845.0	-1,544.7	-5,130.6	516,894.33	577,945.75	32° 25' 15.432 N	104° 12' 52.893 W	
11,000.0	90.00	269.52	8,845.0	-1,545.5	-5,230.6	516,893.49	577,845.75	32° 25' 15.425 N	104° 12' 54.060 W	
11,100.0	90.00	269.52	8,845.0	-1,546.3	-5,330.6	516,892.65	577,745.75	32° 25' 15.418 N	104° 12' 55.226 W	
11,200.0	90.00	269.52	8,845.0	-1,547.2	-5,430.6	516,891.81	577,645.76	32° 25' 15.410 N	104° 12' 56.393 W	
11,300.0	90.00	269.52	8,845.0	-1,548.0	-5,530.6	516,890.98	577,545.76	32° 25' 15.403 N	104° 12' 57.560 W	
11,400.0	90.00	269.52	8,845.0	-1,548.8	-5,630.6	516,890.14	577,445.76	32° 25' 15.396 N	104° 12' 58.726 W	
11,500.0	90.00	269.52	8,845.0	-1,549.7	-5,730.6	516,889.30	577,345.77	32° 25' 15.389 N	104° 12' 59.893 W	
11,600.0	90.00	269.52	8,845.0	-1,550.5	-5,830.6	516,888.46	577,245.77	32° 25' 15.381 N	104° 13' 1.060 W	
11,700.0	90.00	269.52	8,845.0	-1,551.4	-5,930.5	516,887.62	577,145.77	32° 25' 15.374 N	104° 13' 2.226 W	
11,800.0	90.00	269.52	8,845.0	-1,552.2	-6,030.5	516,886.78	577,045.78	32° 25' 15.367 N	104° 13' 3.393 W	
11,900.0	90.00	269.52	8,845.0	-1,553.0	-6,130.5	516,885.94	576,945.78	32° 25' 15.360 N	104° 13' 4.560 W	
12,000.0	90.00	269.52	8,845.0	-1,553.9	-6,230.5	516,885.10	576,845.78	32° 25' 15.353 N	104° 13' 5.726 W	
12,100.0	90.00	269.52	8,845.0	-1,554.7	-6,330.5	516,884.27	576,745.79	32° 25' 15.345 N	104° 13' 6.893 W	
12,200.0	90.00	269.52	8,845.0	-1,555.6	-6,430.5	516,883.43	576,645.79	32° 25' 15.338 N	104° 13' 8.060 W	
12,300.0	90.00	269.52	8,845.0	-1,556.4	-6,530.5	516,882.59	576,545.79	32° 25' 15.331 N	104° 13' 9.226 W	
12,400.0	90.00	269.52	8,845.0	-1,557.2	-6,630.5	516,881.75	576,445.80	32° 25' 15.324 N	104° 13' 10.393 W	
12,500.0	90.00	269.52	8,845.0	-1,558.1	-6,730.5	516,880.91	576,345.80	32° 25' 15.316 N	104° 13' 11.560 W	
12,600.0	90.00	269.52	8,845.0	-1,558.9	-6,830.5	516,880.07	576,245.81	32° 25' 15.309 N	104° 13' 12.726 W	
12,700.0	90.00	269.52	8,845.0	-1,559.7	-6,930.5	516,879.23	576,145.81	32° 25' 15.302 N	104° 13' 13.893 W	
12,800.0	90.00	269.52	8,845.0	-1,560.6	-7,030.5	516,878.39	576,045.81	32° 25' 15.295 N	104° 13' 15.060 W	
12,900.0	90.00	269.52	8,845.0	-1,561.4	-7,130.5	516,877.56	575,945.82	32° 25' 15.287 N	104° 13' 16.226 W	
13,000.0	90.00	269.52	8,845.0	-1,562.3	-7,230.5	516,876.72	575,845.82	32° 25' 15.280 N	104° 13' 17.393 W	
13,100.0	90.00	269.52	8,845.0	-1,563.1	-7,330.5	516,875.88	575,745.82	32° 25' 15.273 N	104° 13' 18.560 W	
13,200.0	90.00	269.52	8,845.0	-1,563.9	-7,430.5	516,875.04	575,645.83	32° 25' 15.266 N	104° 13' 19.726 W	
13,300.0	90.00	269.52	8,845.0	-1,564.8	-7,530.5	516,874.20	575,545.83	32° 25' 15.258 N	104° 13' 20.893 W	
13,400.0	90.00	269.52	8,845.0	-1,565.6	-7,630.5	516,873.36	575,445.83	32° 25' 15.251 N	104° 13' 22.059 W	
13,500.0	90.00	269.52	8,845.0	-1,566.5	-7,730.5	516,872.52	575,345.84	32° 25' 15.244 N	104° 13' 23.226 W	
13,600.0	90.00	269.52	8,845.0	-1,567.3	-7,830.5	516,871.68	575,245.84	32° 25' 15.236 N	104° 13' 24.393 W	
13,700.0	90.00	269.52	8,845.0	-1,568.1	-7,930.5	516,870.85	575,145.84	32° 25' 15.229 N	104° 13' 25.559 W	
13,800.0	90.00	269.52	8,845.0	-1,569.0	-8,030.5	516,870.01	575,045.85	32° 25' 15.222 N	104° 13' 26.726 W	
13,900.0	90.00	269.52	8,845.0	-1,569.8	-8,130.5	516,869.17	574,945.85	32° 25' 15.215 N	104° 13' 27.893 W	
14,000.0	90.00	269.52	8,845.0	-1,570.7	-8,230.5	516,868.33	574,845.85	32° 25' 15.207 N	104° 13' 29.059 W	

Permian Resources

Planning Report - Geographic

Database:	Compass	Local Co-ordinate Reference:	Well BARNEY 223H
Company:	NEW MEXICO	TVD Reference:	KB @ 3155.0usft
Project:	(SP) EDDY	MD Reference:	KB @ 3155.0usft
Site:	BETTY & BARNEY	North Reference:	Grid
Well:	BARNEY 223H	Survey Calculation Method:	Minimum Curvature
Wellbore:	OWB		
Design:	PWPO		

Planned Survey										
Measured Depth (usft)	Inclination (°)	Azimuth (°)	Vertical Depth (usft)	+N/-S (usft)	+E/-W (usft)	Map Northing (usft)	Map Easting (usft)	Latitude	Longitude	
14,100.0	90.00	269.52	8,845.0	-1,571.5	-8,330.5	516,867.49	574,745.86	32° 25' 15.200 N	104° 13' 30.226 W	
14,200.0	90.00	269.52	8,845.0	-1,572.3	-8,430.5	516,866.65	574,645.86	32° 25' 15.193 N	104° 13' 31.393 W	
14,300.0	90.00	269.52	8,845.0	-1,573.2	-8,530.5	516,865.81	574,545.87	32° 25' 15.185 N	104° 13' 32.559 W	
14,400.0	90.00	269.52	8,845.0	-1,574.0	-8,630.5	516,864.97	574,445.87	32° 25' 15.178 N	104° 13' 33.726 W	
14,500.0	90.00	269.52	8,845.0	-1,574.8	-8,730.5	516,864.14	574,345.87	32° 25' 15.171 N	104° 13' 34.893 W	
14,600.0	90.00	269.52	8,845.0	-1,575.7	-8,830.4	516,863.30	574,245.88	32° 25' 15.163 N	104° 13' 36.059 W	
14,700.0	90.00	269.52	8,845.0	-1,576.5	-8,930.4	516,862.46	574,145.88	32° 25' 15.156 N	104° 13' 37.226 W	
14,800.0	90.00	269.52	8,845.0	-1,577.4	-9,030.4	516,861.62	574,045.88	32° 25' 15.149 N	104° 13' 38.393 W	
14,900.0	90.00	269.52	8,845.0	-1,578.2	-9,130.4	516,860.78	573,945.89	32° 25' 15.142 N	104° 13' 39.559 W	
15,000.0	90.00	269.52	8,845.0	-1,579.0	-9,230.4	516,859.94	573,845.89	32° 25' 15.134 N	104° 13' 40.726 W	
15,100.0	90.00	269.52	8,845.0	-1,579.9	-9,330.4	516,859.10	573,745.89	32° 25' 15.127 N	104° 13' 41.893 W	
15,200.0	90.00	269.52	8,845.0	-1,580.7	-9,430.4	516,858.26	573,645.90	32° 25' 15.120 N	104° 13' 43.059 W	
15,300.0	90.00	269.52	8,845.0	-1,581.6	-9,530.4	516,857.43	573,545.90	32° 25' 15.112 N	104° 13' 44.226 W	
15,400.0	90.00	269.52	8,845.0	-1,582.4	-9,630.4	516,856.59	573,445.90	32° 25' 15.105 N	104° 13' 45.393 W	
15,500.0	90.00	269.52	8,845.0	-1,583.2	-9,730.4	516,855.75	573,345.91	32° 25' 15.098 N	104° 13' 46.559 W	
15,600.0	90.00	269.52	8,845.0	-1,584.1	-9,830.4	516,854.91	573,245.91	32° 25' 15.090 N	104° 13' 47.726 W	
15,700.0	90.00	269.52	8,845.0	-1,584.9	-9,930.4	516,854.07	573,145.91	32° 25' 15.083 N	104° 13' 48.893 W	
15,800.0	90.00	269.52	8,845.0	-1,585.7	-10,030.4	516,853.23	573,045.92	32° 25' 15.075 N	104° 13' 50.059 W	
15,900.0	90.00	269.52	8,845.0	-1,586.6	-10,130.4	516,852.39	572,945.92	32° 25' 15.068 N	104° 13' 51.226 W	
16,000.0	90.00	269.52	8,845.0	-1,587.4	-10,230.4	516,851.55	572,845.93	32° 25' 15.061 N	104° 13' 52.393 W	
16,100.0	90.00	269.52	8,845.0	-1,588.3	-10,330.4	516,850.72	572,745.93	32° 25' 15.053 N	104° 13' 53.559 W	
16,200.0	90.00	269.52	8,845.0	-1,589.1	-10,430.4	516,849.88	572,645.93	32° 25' 15.046 N	104° 13' 54.726 W	
16,300.0	90.00	269.52	8,845.0	-1,589.9	-10,530.4	516,849.04	572,545.94	32° 25' 15.039 N	104° 13' 55.893 W	
16,400.0	90.00	269.52	8,845.0	-1,590.8	-10,630.4	516,848.20	572,445.94	32° 25' 15.031 N	104° 13' 57.059 W	
16,500.0	90.00	269.52	8,845.0	-1,591.6	-10,730.4	516,847.36	572,345.94	32° 25' 15.024 N	104° 13' 58.226 W	
16,600.0	90.00	269.52	8,845.0	-1,592.5	-10,830.4	516,846.52	572,245.95	32° 25' 15.017 N	104° 13' 59.393 W	
16,700.0	90.00	269.52	8,845.0	-1,593.3	-10,930.4	516,845.68	572,145.95	32° 25' 15.009 N	104° 14' 0.559 W	
16,800.0	90.00	269.52	8,845.0	-1,594.1	-11,030.4	516,844.84	572,045.95	32° 25' 15.002 N	104° 14' 1.726 W	
16,900.0	90.00	269.52	8,845.0	-1,595.0	-11,130.4	516,844.01	571,945.96	32° 25' 14.994 N	104° 14' 2.893 W	
17,000.0	90.00	269.52	8,845.0	-1,595.8	-11,230.4	516,843.17	571,845.96	32° 25' 14.987 N	104° 14' 4.059 W	
17,100.0	90.00	269.52	8,845.0	-1,596.7	-11,330.4	516,842.33	571,745.96	32° 25' 14.980 N	104° 14' 5.226 W	
17,200.0	90.00	269.52	8,845.0	-1,597.5	-11,430.4	516,841.49	571,645.97	32° 25' 14.972 N	104° 14' 6.393 W	
17,300.0	90.00	269.52	8,845.0	-1,598.3	-11,530.4	516,840.65	571,545.97	32° 25' 14.965 N	104° 14' 7.559 W	
17,400.0	90.00	269.52	8,845.0	-1,599.2	-11,630.3	516,839.81	571,445.97	32° 25' 14.958 N	104° 14' 8.726 W	
17,500.0	90.00	269.52	8,845.0	-1,600.0	-11,730.3	516,838.97	571,345.98	32° 25' 14.950 N	104° 14' 9.893 W	
17,600.0	90.00	269.52	8,845.0	-1,600.8	-11,830.3	516,838.13	571,245.98	32° 25' 14.943 N	104° 14' 11.059 W	
17,700.0	90.00	269.52	8,845.0	-1,601.7	-11,930.3	516,837.30	571,145.98	32° 25' 14.935 N	104° 14' 12.226 W	
17,800.0	90.00	269.52	8,845.0	-1,602.5	-12,030.3	516,836.46	571,045.99	32° 25' 14.928 N	104° 14' 13.393 W	
17,852.5	90.00	269.52	8,845.0	-1,603.0	-12,082.8	516,836.02	570,993.49	32° 25' 14.924 N	104° 14' 14.005 W	
TD at 17852.5										

Design Targets										
Target Name										
- hit/miss target	Dip Angle	Dip Dir.	TVD	+N/-S	+E/-W	Northing	Easting		Latitude	Longitude
- Shape	(°)	(°)	(usft)	(usft)	(usft)	(usft)	(usft)			
FTP-BARNEY 223 H	0.00	0.00	8,845.0	-1,540.6	-4,383.3	516,898.36	578,693.06		32° 25' 15.464 N	104° 12' 44.174 W
- plan misses target center by 69.9usft at 10175.0usft MD (8785.2 TVD, -1525.8 N, -4416.2 E)										
- Point										
BHL-BARNEY 223 H	0.00	0.00	8,845.0	-1,605.2	-12,082.5	516,833.78	570,993.78		32° 25' 14.902 N	104° 14' 14.002 W
- plan misses target center by 2.2usft at 17852.2usft MD (8845.0 TVD, -1603.0 N, -12082.6 E)										
- Point										

Planning Report - Geographic

Database:	Compass	Local Co-ordinate Reference:	Well BARNEY 223H
Company:	NEW MEXICO	TVD Reference:	KB @ 3155.0usft
Project:	(SP) EDDY	MD Reference:	KB @ 3155.0usft
Site:	BETTY & BARNEY	North Reference:	Grid
Well:	BARNEY 223H	Survey Calculation Method:	Minimum Curvature
Wellbore:	OWB		
Design:	PWP0		

Plan Annotations				
Measured Depth (usft)	Vertical Depth (usft)	Local Coordinates		Comment
		+N/-S (usft)	+E/-W (usft)	
1,000.0	1,000.0	0.0	0.0	Start Build 2.00
2,682.5	2,587.4	-159.0	-452.9	Start 7250.5 hold at 2682.5 MD
9,933.0	8,623.0	-1,489.4	-4,243.9	Start DLS 12.00 TFO 22.31
10,419.4	8,845.0	-1,540.6	-4,650.0	Start 7433.1 hold at 10419.4 MD
17,852.5	8,845.0	-1,603.0	-12,082.8	TD at 17852.5

PERMIAN

R E S O U R C E S

H₂S CONTINGENCY PLAN

FOR

Permian Resources Corporation

Barney 223H & 423H

Eddy County, New Mexico

04-04-2024

This plan is subject to updating

Permian Resources Corporation	H ₂ S Contingency Plan Barney 223H & 423H	Eddy County, New Mexico
-------------------------------	---	-------------------------

Table of Contents

Section 1.0 – Introduction 3

 I. Purpose

 II. Scope & Applicability

Section 2.0 - Plan Implementation.....3

 I. Activation Requirements

 II. Emergency Evacuation

 III. Emergency Response Activities

Section 3.0 - Potential Hazardous Conditions.....4

Section 4.0 - Notification of H₂S Release Event.....6

 I. Local & State Law Enforcement

 II. General Public

 III. New Mexico Oil Conservation Division

 IV. New Mexico Environment Department

 V. Bureau of Land Management

Section 5.0 - Emergency Contact List.....7

 I. Permian Resources Management Personnel

 II. Eddy County Sheriff

 III. New Mexico State Highway Patrol

 IV. Fire / EMS

 V. Carlsbad Memorial Hospital

 VI. Emergency Response Contractors

 VII. New Mexico Oil Conservation Division

 VIII. New Mexico Environment Department

 IX. Bureau of Land Management

 X. Other Agencies

Section 6.0 – Drilling Location Information.....9-12

 I. Site Safety Information

 II. Directions to Location

 III. Plat of Location including GPS Coordinates

 IV. Routes of Ingress & Egress (MAP)

 V. ROE Map

 VI. Residences in ROE

 VII. Public Roads in ROE

Section 7.0 – Hazard Communication.....13-15

 I. Physical Characteristics of Hydrogen Sulfide Gas

 II. Human Health Hazards / Toxicological Information

 III. Environmental Hazards

Section 8.0 - Regulatory Information.....15-17

 I. OSHA Information

 II. New Mexico Oil Conservation Division & Bureau of Land Management

Section 9.0 - Training Requirements.....17

Section 10.0 - Personal Protective Equipment.....18

Appendices

 I. Appendix A – H₂S SDS

 II. Appendix B – SO₂ SDS

Permian Resources Corporation	H ₂ S Contingency Plan Barney 223H & 423H	Eddy County, New Mexico
-------------------------------	---	-------------------------

Section 1.0 – Introduction

I. Purpose

The purpose of this contingency plan (Plan) is to provide Permian Resources Corporation. (Permian Resources) with an organized plan of action for alerting and protecting Permian Resources employees, the general public, and any potential first responders prior to any intentional release or immediately following the accidental / unintentional release of a potentially hazardous volume / concentration of Hydrogen Sulfide Gas (H₂S).

II. Scope & Applicability

This Plan applies to all planned, unplanned, uncontrolled and/or unauthorized releases of hazardous concentrations of H₂S or any associated hazardous byproducts of combustion, occurring at any Permian Resources owned or operated facilities including but not limited to: wells, flowlines, pipelines, tank batteries, production facilities, SWD facilities, compressor stations, gas processing plants, drilling / completions / workover operations, and any other applicable company owned property.

Section 2.0 - Plan Implementation

I. Activation Requirements

In accordance with the requirements of Bureau of Land Management Onshore Order #6 and NMAC 19.15.11, this Plan shall be activated in advance of any authorized, planned, unplanned, uncontrolled, or unauthorized release of a hazardous volume / concentration of H₂S gas, or SO₂, which could potentially adversely impact the workers, general public or the environment.

II. Emergency Evacuation

In the event of an unplanned, uncontrolled, or unauthorized release of a hazardous volume / concentration of H₂S gas, the first priority is to ensure the safety of the workers and general public. Upon discovery and subsequent determination of an applicable release, which cannot be quickly mitigated, immediately by using 911, notify local authorities to begin the process of alerting the general public, evacuate any residents within the Radius of Exposure (ROE), and limit any general public or employee access to any areas within the ROE of the affected facility.

III. Emergency Response Activities

The purpose of emergency response actions is to take steps to quickly mitigate / stop the ongoing release of the hazardous source of H₂S. Upon discovery of any hazardous release, immediately notify Permian Resources management to activate the Emergency Response Team (ERT). Once Permian Resources supervision arrives and assesses the situation, a work plan identifying the proper procedures shall be developed to stop the release.

Section 3.0 - Potential Hazardous Conditions & Response Actions

During a planned or unplanned release of H₂S, there are several hazardous conditions that are presented both to employees, the general public, and emergency responders. These specific hazardous conditions are identified in the tables below.

Permian Resources Corporation	H ₂ S Contingency Plan Barney 223H & 423H	Eddy County, New Mexico
-------------------------------	---	-------------------------

H ₂ S OPERATING CONDITIONS – RESPONSE ACTIONS TO CONSIDER		✓
H₂S CONDITION 1: POTENTIAL DANGER TO LIFE AND HEALTH → WARNING SIGN GREEN		
H₂S concentration <10 ppm detected by location monitors		<input type="checkbox"/>
General Actions During Condition 1		<input type="checkbox"/>
Notify Site Supervisor / Permian Resources Person-in-Charge (PIC) of any observed increase in ambient H ₂ S concentrations		<input type="checkbox"/>
All personnel check safety equipment is in adequate working order & store in accessible location		<input type="checkbox"/>
Sensitize crews with safety meetings.		<input type="checkbox"/>
Limit visitors and non-essential personnel on location		<input type="checkbox"/>
Continuously monitor H ₂ S concentrations and check calibration of sensors		<input type="checkbox"/>
Ensure H ₂ S scavenger is on location.		<input type="checkbox"/>
H₂S CONDITION 2: MODERATE DANGER TO LIFE AND HEALTH → WARNING SIGN YELLOW		
H₂S concentration >10 ppm and < 30 ppm in atmosphere detected by location monitors:		<input type="checkbox"/>
General Actions During Condition 2		<input type="checkbox"/>
Sound H ₂ S alarm and/or display yellow flag.		<input type="checkbox"/>
Account for on-site personnel		<input type="checkbox"/>
Upon sounding of an area or personal H ₂ S monitor alarm when 10 ppm is reached, proceed to a safe briefing area upwind of the location immediately (see MA-4, Figure 5-1).		<input type="checkbox"/>
Don proper respiratory protection.		<input type="checkbox"/>
Alert other affected personnel		<input type="checkbox"/>
If trained and safe to do so undertake measures to control source H ₂ S discharge and eliminate possible ignition sources. Initiate Emergency Shutdown procedures as deemed necessary to correct or control the specific situation.		<input type="checkbox"/>
Account for on-site personnel at safe briefing area.		<input type="checkbox"/>
Stay in safe briefing area if not working to correct the situation.		<input type="checkbox"/>
Keep Site Supervisor / Permian Resources PIC informed. Notify applicable government agencies (Appendix A) If off-site impact; notify any neighbors within Radius of Exposure (ROE), Fig 5.11		<input type="checkbox"/>
Continuously monitor H ₂ S until readings below 10 ppm.		<input type="checkbox"/>
Evacuated area shall not be re-entered except by trained and authorized personnel utilizing appropriate respiratory protection; or until “all clear” sounded by Permian Resources PIC / Site Supervisor.		

Permian Resources Corporation	H ₂ S Contingency Plan Barney 223H & 423H	Eddy County, New Mexico
-------------------------------	---	-------------------------

H₂S CONDITION 3: EXTREME DANGER TO LIFE AND HEALTH → WARNING SIGN RED	
> 30 ppm H ₂ S concentration in air detected by location monitors: Extreme danger to life	<input type="checkbox"/>
General Actions During Condition 3	<input type="checkbox"/>
Sound H ₂ S alarm and/or display red flag.	<input type="checkbox"/>
Account for on-site personnel	<input type="checkbox"/>
Move away from H ₂ S source and get out of the affected area.	<input type="checkbox"/>
Proceed to designated safe briefing area; alert other affected personnel.	<input type="checkbox"/>
Account for personnel at safe briefing area.	<input type="checkbox"/>
If trained and safe to do so undertake measures to control source H ₂ S discharge and eliminate possible ignition sources. Initiate Emergency Shutdown procedures as deemed necessary to correct or control the specific situation.	<input type="checkbox"/>
Notify vehicles or situation and divert all traffic away from location.	<input type="checkbox"/>
Permian Resources Person-in-Charge will make appropriate community notifications.	<input type="checkbox"/>
Red warning flag must be on display until the situation has been corrected and the Permian Resources Person-in-Charge determines it is safe to resume operations under Condition 1 .	<input type="checkbox"/>
Notify management of the condition and action taken. If H ₂ S concentration is increasing and steps to correct the situation are not successful – or at any time if well control is questionable – alert all responsible parties for possible activation of the H ₂ S Contingency Plan. If well control at the surface is lost, determine if situation warrants igniting the well.	<input type="checkbox"/>
If uncontrolled flow at the surface occurs, the Permian Resources PIC, with approval, if possible, from those coordinating the emergency (as specified in the site-specific H₂S Contingency Plan) are responsible for determining if the situation warrants igniting the flow of the uncontrolled well. This decision should be made only as a last resort and in a situation where it is obvious that human life is in danger and there is no hope of controlling the flow under prevailing conditions.	<input type="checkbox"/>
If the flow is ignited, burning H ₂ S will be converted to sulfur dioxide (SO ₂), which is also highly toxic. Do not assume that area is safe after the flow is ignited. If the well is ignited, evacuation of the area is mandatory, because SO ₂ will remain in low-lying places under no-wind conditions.	<input type="checkbox"/>
Keep Site Supervisor / Permian Resources PIC informed. Notify applicable government agencies and local law enforcement (Appendix A) If off-site impact; notify any neighbors within the Radius of Exposure (ROE), see example in Figure 5-11 .	<input type="checkbox"/>
Continuously monitor H ₂ S until readings fall below 10 ppm.	<input type="checkbox"/>
Evacuated area shall not be re-entered except by trained and authorized personnel utilizing appropriate respiratory protection; or until “all clear” sounded by Permian Resources PIC / Site Supervisor.	<input type="checkbox"/>
IF ABOVE ACTIONS CANNOT BE ACCOMPLISHED IN TIME TO PREVENT EXPOSURE TO THE PUBLIC	
Alert public (directly or through appropriate government agencies) who may be subject to potentially harmful exposure levels.	<input type="checkbox"/>
Make recommendations to public officials regarding blocking unauthorized access to the unsafe area and assist as appropriate.	<input type="checkbox"/>

Permian Resources Corporation	H ₂ S Contingency Plan Barney 223H & 423H	Eddy County, New Mexico
-------------------------------	---	-------------------------

Make recommendations to public officials regarding evacuating the public and assist as appropriate.	<input type="checkbox"/>
Monitor ambient air in the area of exposure (after following abatement measures) to determine when it is safe for re-entry.	<input type="checkbox"/>

Section 4.0 - Notification of H₂S Release Event

I. Local & State Law Enforcement

Prior to the planned / controlled release of a hazardous concentration of H₂S gas or any associated byproducts of the combustion of H₂S gas, notify local law enforcement agencies regarding the contents of this plan.

In the event of the discovery of an unplanned/uncontrolled release of a hazardous concentration of H₂S gas or any associated byproducts of combustion, immediately notify local and/or state law enforcement agencies of the situation and ask for their assistance.

II. General Public

In the event of a planned or unplanned release of a hazardous concentration of H₂S gas or any associated byproducts of combustion, notify local law enforcement agencies and ask for their assistance in alerting the general public and limiting access to any public roads that may be impacted by such a release.

III. New Mexico Oil Conservation Division

The Permian Resources HSE Department will make any applicable notification to the New Mexico OCD regarding any release of a hazardous concentration of H₂S Gas or any associated byproducts of combustion.

IV. New Mexico Environment Department

The Permian Resources HSE Department will make any applicable notifications to the NMED regarding any release of a hazardous concentration of H₂S gas or any associated byproducts of combustion.

V. Bureau of Land Management

The Permian Resources Regulatory Department will make any applicable notifications to the BLM regarding any release of a hazardous concentration of H₂S gas or any associated byproducts of combustion.

Permian Resources Corporation	H ₂ S Contingency Plan Barney 223H & 423H	Eddy County, New Mexico
-------------------------------	---	-------------------------

Section 5.0 - Emergency Contact List

EMERGENCY CONTACT LIST				
PERMIAN RESOURCES CORPORATION.				
POSITION	NAME	OFFICE	CELL	ALT PHONE
Operations				
Operations Superintendent	Rick Lawson		432.530.3188	
TX Operations Superintendent	Josh Graham	432.940.3191	432.940.3191	
NM Operations Superintendent	Manual Mata	432.664.0278	575.408.0216	
Drilling Manager	Jason Fitzgerald	432.315.0146	318.347.3916	
Drilling Engineer	Parker Simmons	432.400.1038	281.536.9813	
Production Manager	Levi Harris	432.219.8568	720.261.4633	
SVP Development Ops	Clayton Smith	720.499.1416	361.215.2494	
SVP Production Ops	Casey McCain	432.695.4239	432.664.6140	
HSE & Regulatory				
H&S Manager	Adam Hicks	720.499.2377	903.426.4556	
Regulatory Manager	Stephanie Rabadue		432.260.4388	
Environmental Manager	Montgomery Floyd	432-315-0123	432-425-8321	
HSE Consultant	Blake Wisdom		918-323-2343	
Local, State, & Federal Agencies				
Eddy County Sheriff		575-887-7551		911
New Mexico State Highway Patrol		505-757-2297		911
Carlsbad Fire / EMS		575-885-3125		911
Carlsbad Memorial Hospital		575-887-4100		
Secorp – Safety Contractor	Ricky Stephens		(325)-262-0707	
New Mexico Oil Conservation Division – District 1 Office – Hobbs, NM.		575-393-6161		
New Mexico Environment Department – District III Office – Hobbs, NM		575-397-6910		
New Mexico Oil Conservation Division – Hobbs, NM	24 Hour Emergency	575-393-6161		
Bureau of Land Management – Carlsbad, NM		575-234-5972		
U.S. Fish & Wildlife		502-248-6911		

Section 6.0 – Drilling Location Information**I. Site Safety Information****1. Safe Briefing Area**

- a. There shall be two areas that will be designated as "SAFE BRIEFING AREAS". If H₂S is detected in concentrations equal to or in excess of 10 ppm all personnel not assigned emergency duties are to assemble in the designated Safe Briefing area for instructions. These two areas shall be positioned in accessible locations to facilitate the availability of self-contained breathing air devices. The briefing areas shall be positioned no less than 250' from the wellhead and in such locations that at least one briefing area will be up-wind from the well at all times.

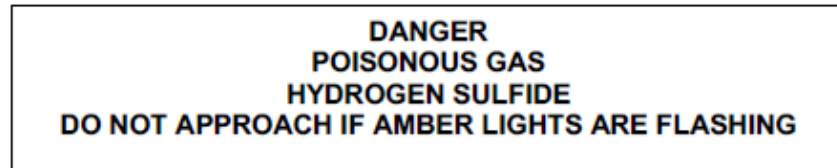
Permian Resources Corporation	H ₂ S Contingency Plan Barney 223H & 423H	Eddy County, New Mexico
-------------------------------	---	-------------------------

2. Wind Indicators

- a. 4 Windsocks will be installed at strategic points on the facility.

3. Danger Signs

- a. A warning sign indicating the possible well conditions will be displayed at the location entrance.



4. H₂S Detectors and Alarms

- a. Continuous monitoring type H₂S detectors, capable of sensing a minimum of 5ppm H₂S in air will be located centrally located at the tanks, heater treater, and combustor. Continuous monitoring type SO₂ detector will also be located at the combustor. The automatic H₂S alarm/flashing light will be located at the site entrance and in front of tank battery.

5. Safety Trailer

- a. A safety trailer equipped with an emergency cascade breathing air system with 2 ea. Work/escape packs, a stretcher, 2 OSHA approved full body harnesses, and a 20# Class ABC fire extinguisher shall be available at the site in close proximity to the safe briefing area. The cascade system shall be able to be deployed to the drill floor when needed to provide safe breathing air to the workers as needed.

6. Well Control Equipment

- a. The location shall have a flare line to a remote automatic ignitor and back up flare gun, placed 150' from the wellhead.
- b. The location shall be equipped with a remotely operated choke system and a mud gas separator.

7. Mud Program

- a. Company shall have a mud program that contains sufficient weight and additives to control H₂S.

8. Metallurgy

- a. All drill strings, casing, tubing, wellhead, BOP, spools, kill lines, choke manifold and lines, and valves shall be suitable for anticipated H₂S volume and pressure.

9. Communication

- a. The location shall be equipped with a means of effective communication such as a cell phones, intercoms, satellite phones or landlines.

Permian Resources Corporation	H ₂ S Contingency Plan Barney 223H & 423H	Eddy County, New Mexico
-------------------------------	---	-------------------------

II. Directions to Location

BEGINNING AT THE INTERSECTION OF U.S. HIGHWAY 62 AND GREENE ST IN CARLSBAD, PROCEED EAST ON US-62 FOR 1.4 MILES THEN TURN RIGHT ONTO LEASE ROAD. TRAVEL SOUTH APPROX. 125' TO LEASE ROAD ON RIGHT. TURN RIGHT AND TRAVLE APPROX. 0.3 MILES AND TAKE A SLIGHT RIGHT. CONTINUE FOR 0.1 MILES THEN TURN RIGHT AND TRAVEL 0.2 MILES TO LOCATION ON LEFT.

Permian Resources Corporation

H₂S Contingency Plan
Barney 223H & 423H

Eddy County, New Mexico

Plat of Location

District I 1625 N. French Dr., Hobbs, NM 88240 District II 811 S. First St., Artesia, NM 88210 District III 1000 Rio Brazos Road, Artec, NM 87410 District IV 1220 S. St Francis Dr., NM 87505 Phone: (505) 476-3460 Fax (505) 476-3462	State of New Mexico Energy, Minerals & Natural Resources Department OIL CONSERVATION DIVISION 1220 South St. Francis Dr. Santa Fe, NM 87505	Form C-102 Revised August 1, 2011 Submit one copy to appropriate District Office <input type="checkbox"/> AMENDED REPORT
---	--	---

WELL LOCATION AND ACREAGE DEDICATION PLAT									
1 API Number		2 Pool Code		3 Pool Name					
4 Property Code		5 Property Name BARNEY						6 Well Number 223H	
7 OGRID No.		8 Operator Name PERMIAN RESOURCES OPERATING, LLC						9 Elevation 3,124.81'	

"Surface Location									
UL or lot no. P	Section 5	Township 22 S	Range 27 E	Lot Idn	Feet from the 817'	North/South line SOUTH	Feet from the 1,236'	East/West line EAST	County EDDY

"Bottom Hole Location If Different From Surface									
UL or lot no. L	Section 6	Township 22 S	Range 27 E	Lot Idn	Feet from the 2,310'	North/South line SOUTH	Feet from the 100'	East/West line WEST	County EDDY

10 Dedicated Acres 480	11 Joint or Infill	12 Consolidation Code	13 Order No.
----------------------------------	--------------------	-----------------------	--------------


No allowable will be assigned to this completion until all interests have been consolidated or a non-standard unit has been approved by the division.

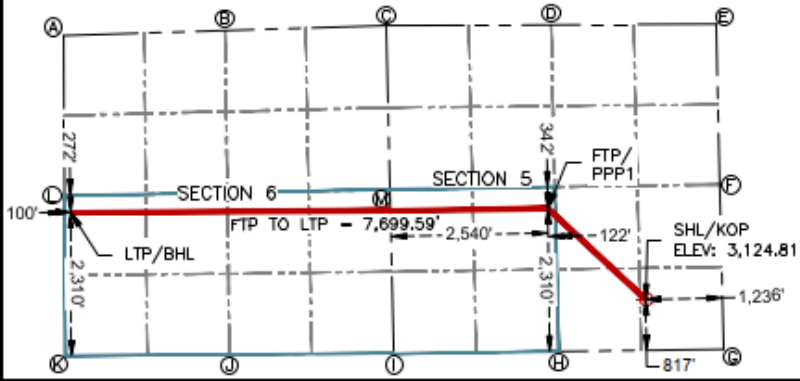
" SURFACE HOLE LOCATION & KICK-OFF POINT 817' FSL & 1,236' FEL ELEV. = 3,124.81' NAD 83 X = 580,274.89' NAD 83 Y = 515,425.82' NAD 83 LAT = 32.416909" NAD 83 LONG = -104.207150" NAD 27 X = 539,093.61' NAD 27 Y = 515,365.95' NAD 27 LAT = 32.416791" NAD 27 LONG = -104.206646"	FIRST TAKE POINT & PENETRATION POINT 1 2,310' FSL & 2,540' FWL NAD 83 X = 578,693.06' NAD 83 Y = 516,898.36' NAD 83 LAT = 32.420962" NAD 83 LONG = -104.212271" NAD 27 X = 537,511.83' NAD 27 Y = 516,838.46' NAD 27 LAT = 32.420844" NAD 27 LONG = -104.211767"	CORNER COORDINATES NEW MEXICO EAST - NAD 83 A - CALCULATED CORNER N-519,685.21' E-570,880.76' B - CALCULATED CORNER N-519,766.44' E-573,482.44' C - 1/2" IRON ROD N-519,847.17' E-576,084.12' D - CALCULATED CORNER N-519,859.02' E-578,746.76' E - IRON PIPE W/ BRASS CAP N-519,870.80' E-581,400.60' F - 1/2" IRON ROD N-517,282.02' E-581,466.79' G - IRON PIPE W/ BRASS CAP N-514,624.77' E-581,530.34' H - CALCULATED CORNER N-514,590.43' E-578,868.67' I - CALCULATED CORNER N-514,556.09' E-576,206.59' J - CALCULATED CORNER N-514,539.63' E-573,555.46' K - CALCULATED CORNER N-514,523.18' E-570,904.33' L - CALCULATED CORNER N-517,104.44' E-570,892.54' M - CALCULATED CORNER N-517,201.63' E-576,145.36'
---	--	--

" SURFACE HOLE LOCATION & KICK-OFF POINT 817' FSL & 1,236' FEL ELEV. = 3,124.81' NAD 83 X = 580,274.89' NAD 83 Y = 515,425.82' NAD 83 LAT = 32.416909" NAD 83 LONG = -104.207150" NAD 27 X = 539,093.61' NAD 27 Y = 515,365.95' NAD 27 LAT = 32.416791" NAD 27 LONG = -104.206646"	" OPERATOR CERTIFICATION I hereby certify that the information contained herein is true and complete to the best of my knowledge and belief, and that this organization either owns a working interest or unleased mineral interest in the land including the proposed bottom hole location or has a right to drill this well at this location pursuant to a contract with an owner of such a mineral or working interest, or to a voluntary pooling agreement or a compulsory pooling order heretofore entered by the division.
---	--

" SURFACE HOLE LOCATION & KICK-OFF POINT 817' FSL & 1,236' FEL ELEV. = 3,124.81' NAD 83 X = 580,274.89' NAD 83 Y = 515,425.82' NAD 83 LAT = 32.416909" NAD 83 LONG = -104.207150" NAD 27 X = 539,093.61' NAD 27 Y = 515,365.95' NAD 27 LAT = 32.416791" NAD 27 LONG = -104.206646"	" SURVEYOR CERTIFICATION I hereby certify that the well location shown on this plat was plotted from field notes of actual surveys made by me or under my supervision, and that the same is true and correct to the best of my belief.
---	--

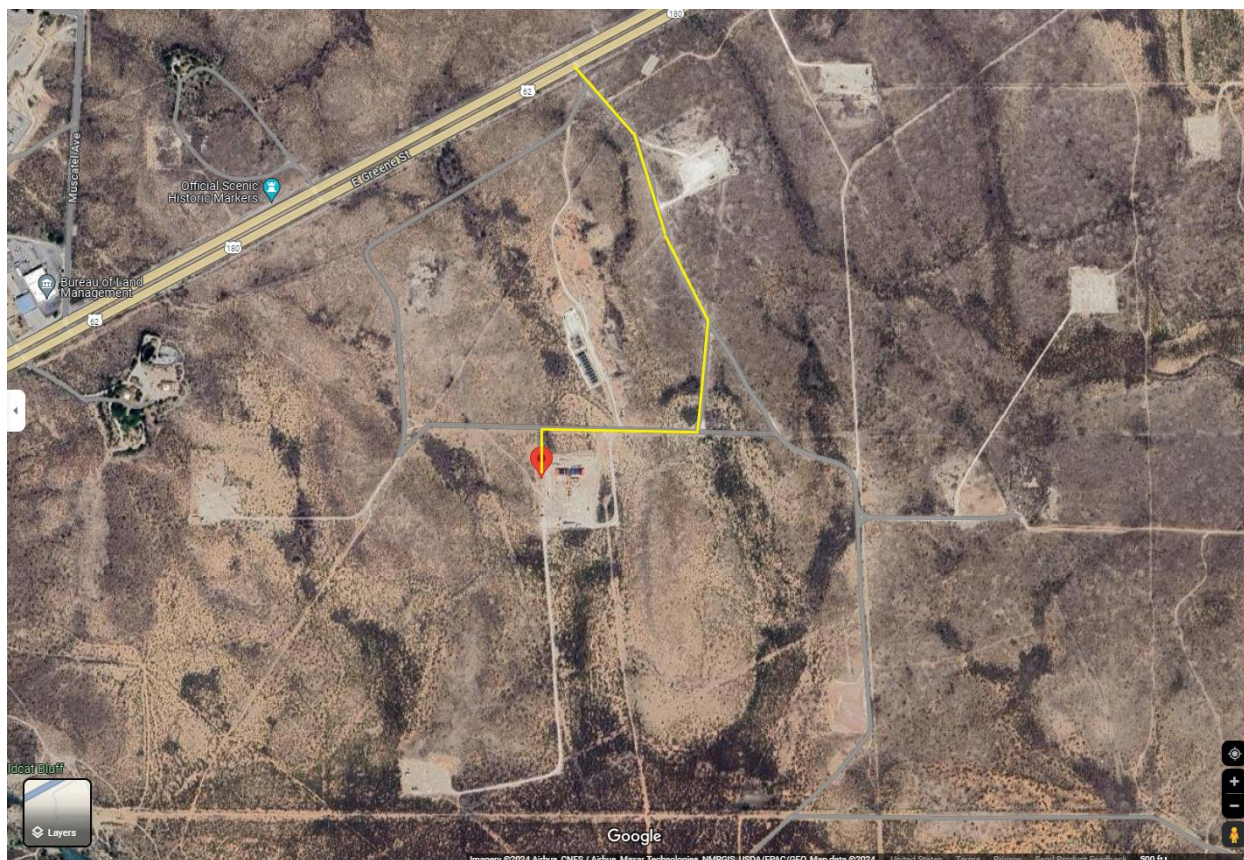
" SURFACE HOLE LOCATION & KICK-OFF POINT 817' FSL & 1,236' FEL ELEV. = 3,124.81' NAD 83 X = 580,274.89' NAD 83 Y = 515,425.82' NAD 83 LAT = 32.416909" NAD 83 LONG = -104.207150" NAD 27 X = 539,093.61' NAD 27 Y = 515,365.95' NAD 27 LAT = 32.416791" NAD 27 LONG = -104.206646"	Signature _____ Date _____ Printed Name _____ Email Address _____
---	---

" SURFACE HOLE LOCATION & KICK-OFF POINT 817' FSL & 1,236' FEL ELEV. = 3,124.81' NAD 83 X = 580,274.89' NAD 83 Y = 515,425.82' NAD 83 LAT = 32.416909" NAD 83 LONG = -104.207150" NAD 27 X = 539,093.61' NAD 27 Y = 515,365.95' NAD 27 LAT = 32.416791" NAD 27 LONG = -104.206646"	Date: 4/3/2024  MARK J. MURRAY P.L.S. NO. 12177
---	--



Permian Resources Corporation	H ₂ S Contingency Plan Barney 223H & 423H	Eddy County, New Mexico
-------------------------------	---	-------------------------

1. Routes of Ingress & Egress (MAP)

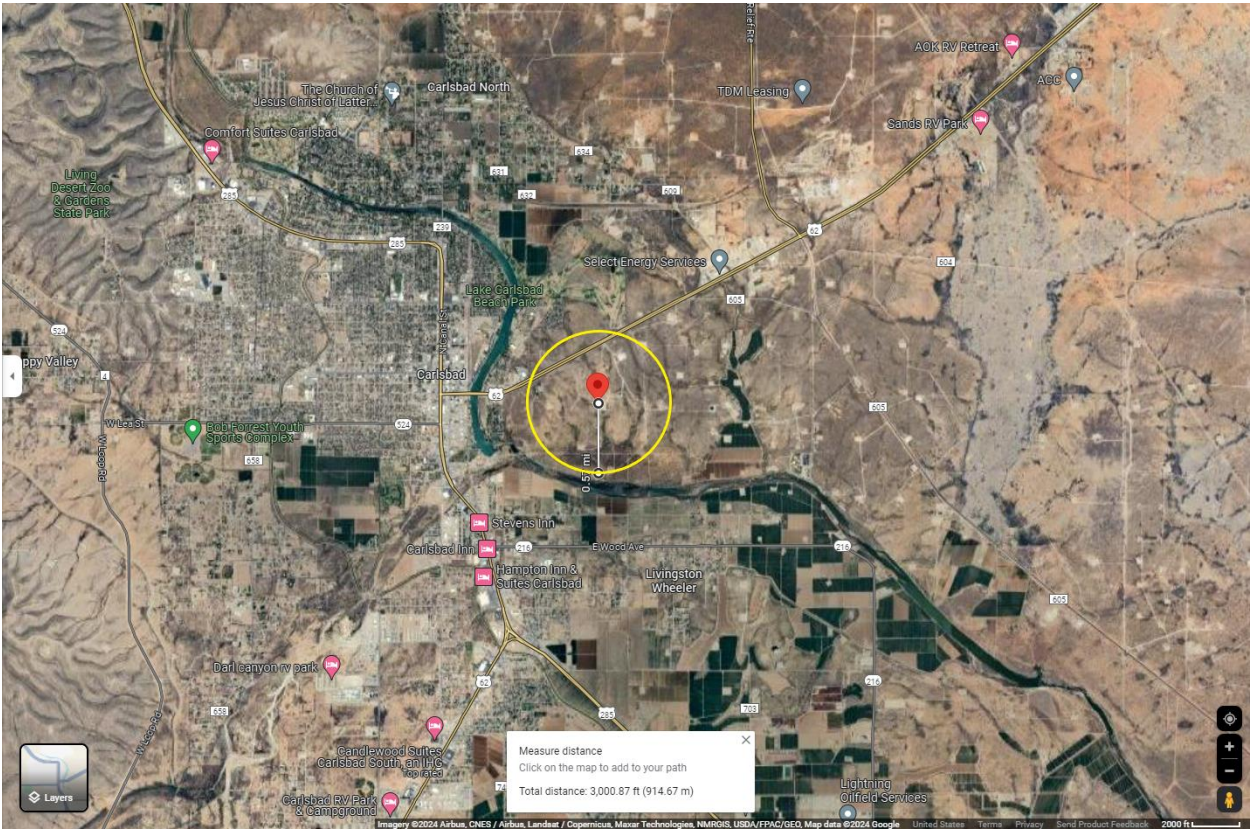


2. Residences in proximity to the 3000' Radius of Exposure (ROE) (MAP)

There are no residences or public gathering places with the 3000' ROE, 100 PPM, 300 PPM, or 500 PPM ROE.

Permian Resources Corporation	H ₂ S Contingency Plan Barney 223H & 423H	Eddy County, New Mexico
-------------------------------	---	-------------------------

Map of 3000' ROE Perimeter



100 PPM, 300 PPM, & 500 PPM Max ROE under worst case scenario

Enter H ₂ S in PPM	1500	
Enter Gas flow in mcf/day (maximum worst case conditions)	2500	
500 ppm radius of exposure (public road)	<u>105</u>	feet
300 ppm radius of exposure	<u>146</u>	feet
100 ppm radius of exposure (public area)	<u>230</u>	feet

- Location NAD 83 GPS Coordinates **Lat: 32.416909, Long: -104.207150**

3. Public Roads in proximity of the Radius of Exposure (ROE)

There are no public roads that would be within the 500 PPM ROE. The closest public road is U.S. Highway 62, which is 2200' from the location.

Permian Resources Corporation	H ₂ S Contingency Plan Barney 223H & 423H	Eddy County, New Mexico
-------------------------------	---	-------------------------

Section 7.0 – Hazard Communication

I. Physical Characteristics of Hydrogen Sulfide Gas

Hydrogen sulfide (H₂S) is a colorless, poisonous gas that is soluble in water. It can be present in crude oils, condensates, natural gas and wastewater streams.

H₂S is heavier than air with a vapor density of 1.189 (air = 1.0); however, H₂S is most often mixed with other gases. These mixtures of H₂S and other gases can be heavier or lighter than air. If the H₂S-containing mixture is heavier, it can collect in low areas such as ditches, ravines, firewalls, and pits; in storage tanks; and in areas of poor ventilation. Please see physical properties in **Table 7.0**.

With H₂S the sense of smell is rapidly lost allowing lethal concentrations to be accumulated without warning. The toxicity of hydrogen sulfide at varying concentrations is indicated in the **Table 7.1**.

Warning: Do not use the mouth-to-mouth method if a victim ingested or inhaled hydrogen sulfide. Give artificial respiration with the aid of a pocket mask equipped with a one-way valve or other proper respiratory medical device.

Table 7.0. Physical Properties of H₂S

Properties of H ₂ S	Description
Vapor Density > 1 = 1.189 Air = 1	<ul style="list-style-type: none">H₂S gas is slightly heavier than air, which can cause it to settle in low places and build in concentration.Produced as a mixture with other gases associated with oil and gas production.
Flammable Range 4.3%-46% 43000 ppm – 460000 ppm	<ul style="list-style-type: none">H₂S can be extremely flammable / explosive when these concentrations are reached by volume in air.

Although H₂S is primarily a respiratory hazard, it is also flammable and forms an explosive mixture at concentrations of 4.3%–46.0% (40,000ppm – 460,000 ppm) by volume in air.

H₂S can be encountered when:

- Venting and draining equipment.
- Opening equipment (separators, pumps, and tanks).
- Opening piping connections (“line breaking”).
- Gauging and sampling storage tanks.
- Entering confined spaces.
- Working around wastewater pits, skimmers, and treatment facilities.

II. Human Health Hazards - Toxicological Information

Table 7.1. Hazards & Toxicity

Concentration (ppm)	Symptoms/Effects
------------------------	------------------

Permian Resources Corporation	H ₂ S Contingency Plan Barney 223H & 423H	Eddy County, New Mexico
-------------------------------	---	-------------------------

0.00011-0.00033 ppm	Typical background concentrations
0.01-1.5 ppm	Odor threshold (when rotten egg smell is first noticeable to some). Odor becomes more offensive at 3-5 ppm. Above 30 ppm, odor described as sweet or sickeningly sweet.
2-5 ppm	Prolonged exposure may cause nausea, tearing of the eyes, headaches or loss of sleep. Airway problems (bronchial constriction) in some asthma patients.
20 ppm	Possible fatigue, loss of appetite, headache, irritability, poor memory, dizziness.
50-100 ppm	Slight conjunctivitis ("gas eye") and respiratory tract irritation after 1 hour. May cause digestive upset and loss of appetite.
100 ppm	Coughing, eye irritation, loss of smell after 2-15 minutes (olfactory fatigue). Altered breathing, drowsiness after 15-30 minutes. Throat irritation after 1 hour. Gradual increase in severity of symptoms over several hours. Death may occur after 48 hours.
100-150 ppm	Loss of smell (olfactory fatigue or paralysis).
200-300 ppm	Marked conjunctivitis and respiratory tract irritation after 1 hour. Pulmonary edema may occur from prolonged exposure.
500-700 ppm	Staggering, collapse in 5 minutes. Serious damage to the eyes in 30 minutes. Death after 30-60 minutes.
700-1000 ppm	Rapid unconsciousness, "knockdown" or immediate collapse within 1 to 2 breaths, breathing stops, death within minutes.
1000-2000 ppm	Nearly instant death

III. Environmental Hazards

H₂S and its associated byproducts from combustion presents a serious environmental hazard. Sulphur Dioxide SO₂ is produced as a constituent of flaring H₂S Gas and can present hazards associated, which are similar to H₂S. Although SO₂ is heavier than air, it will be picked up by a breeze and carried downwind at elevated temperatures. Since Sulfur Dioxide is extremely irritating to the eyes and mucous membranes of the upper respiratory tract, it has exceptionally good warning powers in this respect. The following table indicates the toxic nature of the gas. Please see the attached SDS in Appendix B for reference.

Permian Resources Corporation	H ₂ S Contingency Plan Barney 223H & 423H	Eddy County, New Mexico
-------------------------------	---	-------------------------

SULFUR DIOXIDE TOXICITY		
Concentration		Effects
%SO ₂	PPM	
0.0005	3 to 5	Pungent odor-normally a person can detect SO ₂ in this range.
0.0012	12	Throat irritation, coughing, and constriction of the chest tearing and smarting of eyes.
0.15	150	So irritating that it can only be endured for a few minutes.
0.05	500	Causes a sense of suffocation, even with first breath.

Section 8.0 - Regulatory Information

I. OSHA & NIOSH Information

II. Table 8.0. OSHA & NIOSH H₂S Information

PEL, IDLH, TLV	Description
NIOSH PEL 10 PPM	<ul style="list-style-type: none"> PEL is the Permissible Exposure Limit that an employee may be exposed up to 8 hr / day.
OSHA General Industry Ceiling PEL – 20 PPM	<ul style="list-style-type: none"> The maximum exposure limit, which cannot be exceeded for any length of time.
IDLH 100 PPM	<ul style="list-style-type: none"> Immediately Dangerous to Life and Health
Permian Resources PEL 10 PPM	<ul style="list-style-type: none"> Permian Resources Policy Regarding H₂S for employee safety

III. New Mexico OCD & BLM – H₂S Concentration Threshold Requirements

New Mexico NMAC 19.15.11 and Onshore Order #6 identify two Radii of Exposure (ROE) that identify potential danger to the public and require additional compliance measures. Permian Resources is required to install safety devices, establish safety procedures and develop a written H₂S contingency plan for sites where the H₂S concentrations are as follows.

Table 8.1. Calculating H₂S Radius of Exposure

H ₂ S Radius of Exposure	Description	Control and Equipment Requirements
100 ppm	Distance from a release to where the H ₂ S concentration in the air will dilute below 100ppm	ROE > 50-ft and includes any part of a “public area” (residence, school, business, etc., or any area that can be expected to be populated). ROE > 3,000-ft
500 ppm	Distance from a release to where the H ₂ S concentration in the air will dilute below 500ppm	ROE > 50-ft and includes any part of a public road (public roads are tax supported roads or any road used for public access or use)

Calculating H₂S Radius of Exposure

Permian Resources Corporation	H ₂ S Contingency Plan Barney 223H & 423H	Eddy County, New Mexico
-------------------------------	---	-------------------------

The ROE of an H₂S release is calculated to determine if a potentially hazardous volume of H₂S gas at 100 or 500 parts per million (ppm) is within a regulated distance requiring further action. If information about the concentration of H₂S and the potential gas release volume is known, the location of the Muster Areas will be set, and safety measures will be implemented based on the calculated radius of exposure (ROE). NMAC 19.15.11 – Hydrogen Sulfide Safety defines the ROE as the radius constructed with the gas’s point of escape as its center and its length calculated by the following Pasquill-Gifford equations:

To determine the extent of the **100 ppm ROE**:

$$x = [(1.589) (\text{mole fraction H}_2\text{S})(Q)]^{(.6258)}.$$

To determine the extent of the **500 ppm ROE**:

$$x = [(0.4546) (\text{mole fraction H}_2\text{S})(Q)]^{(.6258)}.$$

Table 8.2. Calculating H2S Radius of Exposure

ROE Variable	Description
X =	ROE in feet
Q =	Max volume of gas released determined to be released in cubic feet per day (ft³/d) normalized to standard temperature and pressure, 60°F and 14.65 psia
Mole fraction H ₂ S =	Mole fraction of H ₂ S in the gaseous mixture released.

The volume used as the escape rate in determining the ROE is specified in the rule as follows:

- The maximum daily volume rate of gas containing H₂S handled by that system element for which the ROE is calculated.
- For existing gas wells, the current adjusted open-flow rate, or the operator's estimate of the well's capacity to flow against zero back-pressure at the wellhead.

New Mexico Oil Conservation Division & BLM Site Requirements under NMAC 19.15.11 & Onshore Order #6

- Two cleared areas will be designated as Safe Briefing Areas. During an emergency, personnel will assemble in one of these areas for instructions from the Permian Resources Person-in-Charge. Prevailing wind direction should be considered in locating the briefing areas 200’ or more on either side of the well head. One area should offset the other at an angle of 45° to 90° with respect to prevailing wind direction to allow for wind shifts during the work period.
- In the event of either an intentional or accidental releases of hydrogen sulfide, safeguards to protect the general public from the harmful effects of hydrogen sulfide must be in place for operations. A summary of the provisions in each of three H₂S ROE cases is included in **Table 8.3**.
 - **CASE 1** -100 ppm ROE < 50’
 - **CASE 2** - 100 ppm ROE is 50’ or greater, but < 3000’ and does not penetrate public area.
 - **CASE 3** -100 ppm ROE is 50’ or greater and penetrates a public area or 500 ppm ROE includes a public road. Also if 100 ppm ROE > 3000’ regardless of public area.

Table 8.3. NMAC 19.15.11 Compliance Requirements Drilling & Production

NMAC 19.15.11 & BLM COMPLIANCE REQUIREMENTS – DRILLING & PRODUCTION

Permian Resources Corporation	H ₂ S Contingency Plan Barney 223H & 423H	Eddy County, New Mexico
-------------------------------	---	-------------------------

PROVISION	CASE 1	CASE 2	CASE 3
H ₂ S Concentration Test	X	X	X
H-9	X	X	X
Training	X	X	X
District Office Notification	X	X	X
Drill Stem Tests Restricted	X*	X*	X
BOP Test	X*	X*	X
Materials		X	X
Warning and Marker		X	X
Security		X	X
Contingency Plan			X
Control and Equipment Safety			X
Monitors		X**	X**
Mud (ph Control or Scavenger)			X*
Wind Indicators		X**	X
Protective Breathing Equipment		X**	X
Choke Manifold, Secondary Remote Control, and Mud-Gas Separator			X
Flare Stacks			X*

Section 9.0 - Training Requirements

Training

The following elements are considered a minimum level of training for personnel assigned to operations who may encounter H₂S as part of routine or maintenance work.

- The hazards, characteristics, and properties of hydrogen sulfide (H₂S) and (SO₂).
- Sources of H₂S and SO₂.
- Proper use of H₂S and SO₂ detection methods used at the workplace.
- Recognition of, and proper response to, the warning signals initiated by H₂S and SO₂ detection systems in use at the workplace.
- Symptoms of H₂S exposure; symptoms of SO₂ exposure
- Rescue techniques and first aid to victims of H₂S and SO₂ exposure.
- Proper use and maintenance of breathing equipment for working in H₂S and SO₂ atmospheres, as appropriate theory and hands-on practice, with demonstrated proficiency (29 CFR Part 1910.134).
- Workplace practices and relevant maintenance procedures that have been established to protect personnel from the hazards of H₂S and SO₂.
- Wind direction awareness and routes of egress.
- Confined space and enclosed facility entry procedures (if applicable).
- Emergency response procedures that have been developed for the facility or operations.
- Locations and use of safety equipment.
- Locations of safe briefing areas.

Refresher training will be conducted annually.

Permian Resources Corporation	H ₂ S Contingency Plan Barney 223H & 423H	Eddy County, New Mexico
-------------------------------	---	-------------------------

Section 10.0 - Personal Protective Equipment

I. Personal H₂S Monitors

All personnel engaged in planned or unplanned work activity to mitigate the release of a hazardous concentration of H₂S shall have on their person a personal H₂S monitor.

II. Fixed H₂S Detection and Alarms

- 4 channel H₂S monitor
- 4 wireless H₂S monitors
- H₂S alarm system (Audible/Red strobe)
- Personal gas monitor for each person on location
- Gas sample tubes

III. Flame Resistant Clothing

All personnel engaged in planned or unplanned work activity associated with this Plan shall have on the appropriate level of FRC clothing.

IV. Respiratory Protection

The following respiratory protection equipment shall be available at each drilling location.

- Working cascade system available on rig floor and pit system & 750' of air line hose
- Four (4) breathing air manifolds
- Four (4) 30-minute rescue packs
- Five (5) work/Escape units
- Five (5) escape units
- One (1) filler hose for the work/escape/rescue units


Supplied air (airline or SCBA) respiratory protection against hydrogen sulfide exposure is required in the following situations:

- When routine or maintenance work tasks involve exposure to H₂S concentrations of 10 ppm or greater.
- When a fixed location area monitor alarms, and re-entry to the work area is required to complete a job.
- When confined spaces are to be entered without knowledge of H₂S levels present, or if initial measurements are to be taken of H₂S levels.
- During rescue of employees suspected of H₂S overexposure.
- For specific tasks identified with significant exposure potential and outlined in local program guidelines.
- All respiratory equipment for hydrogen sulfide must be of the supplied-air type, equipped with pressure-demand regulators and operated in the pressure-demand mode only. This is the only type of respiratory protection recommended for hydrogen sulfide application. Equipment should be approved by NIOSH/MSHA or other recognized national authority as required. If airline units are used, a five-minute egress bottle should also be carried.
- Gas masks or other air-purifying respirators MUST NEVER BE USED FOR HYDROGEN SULFIDE due to the poor warning properties of the gas.
- Use of respiratory protection should be accompanied by a written respiratory protection program.

Permian Resources Corporation	H ₂ S Contingency Plan Barney 223H & 423H	Eddy County, New Mexico
-------------------------------	---	-------------------------

Appendix A
H₂S SDS

Permian Resources Corporation	H ₂ S Contingency Plan Barney 223H & 423H	Eddy County, New Mexico
-------------------------------	---	-------------------------



Hydrogen sulfide
Safety Data Sheet E-4611
according to the Hazardous Products Regulation (February 11, 2015)
Date of issue: 10-15-1979 Revision date: 08-10-2016 Supersedes: 10-15-2013

SECTION 1: Identification

1.1. Product identifier

Product form

:

Substance

Name

:

Hydrogen sulfide

CAS No

:

7783-06-4

Formula

:

H₂S

Other means of identification

:

Hydrogen sulfide

Product group

:

Core Products

1.2. Recommended use and restrictions on use

Recommended uses and restrictions

:

Industrial use
Use as directed

1.3. Supplier

Praxair Canada inc.

1200 – 1 City Centre Drive

Mississauga - Canada L5B 1M2

T 1-905-803-1600 - F 1-905-803-1682

www.praxair.ca

1.4. Emergency telephone number

Emergency number

:

1-800-363-0042

Call emergency number 24 hours a day only for spills, leaks, fire, exposure, or accidents involving this product.

For routine information, contact your supplier or Praxair sales representative.

SECTION 2: Hazard identification

2.1. Classification of the substance or mixture

GHS-CA classification

Flam. Gas 1

H220

Liquefied gas

H280

Acute Tox. 2 (Inhalation: gas)

H330

STOT SE 3


H335


2.2. GHS Label elements, including precautionary statements


GHS-CA labelling


Hazard pictograms

:









GHS02

GHS04

GHS06

GHS07

Signal word

:

DANGER

Hazard statements

:

EXTREMELY FLAMMABLE GAS
CONTAINS GAS UNDER PRESSURE; MAY EXPLODE IF HEATED
FATAL IF INHALED
MAY CAUSE RESPIRATORY IRRITATION
MAY FORM EXPLOSIVE MIXTURES WITH AIR
SYMPTOMS MAY BE DELAYED
EXTENDED EXPOSURE TO GAS REDUCES THE ABILITY TO SMELL SULFIDES

Precautionary statements

:

Do not handle until all safety precautions have been read and understood
Keep away from heat, hot surfaces, sparks, open flames and other ignition sources. No smoking

This document is only controlled while on the Praxair Canada Inc. website and a copy of this controlled version is available for download. Praxair cannot assure the integrity or accuracy of any version of this document after it has been downloaded or removed from our website.

EN (English)

SDS ID : E-4611

1/9

Released to Imaging: 6/10/2024 9:04:08 AM

22

Permian Resources Corporation	H ₂ S Contingency Plan Barney 223H & 423H	Eddy County, New Mexico
-------------------------------	---	-------------------------



Hydrogen sulfide

Safety Data Sheet E-4611

according to the Hazardous Products Regulation (February 11, 2015)

Date of issue: 10-15-1979

Revision date: 08-10-2016

Supersedes: 10-15-2013

Do not breathe gas
Use and store only outdoors or in a well-ventilated area
Avoid release to the environment
Wear protective gloves, protective clothing, eye protection, respiratory protection, and/or face protection
Leaking gas fire: Do not extinguish, unless leak can be stopped safely
In case of leakage, eliminate all ignition sources
Store locked up
Dispose of contents/container in accordance with container Supplier/owner instructions
Protect from sunlight when ambient temperature exceeds 52°C (125°F)
Close valve after each use and when empty
Do not open valve until connected to equipment prepared for use
When returning cylinder, install leak tight valve outlet cap or plug
Do not depend on odour to detect the presence of gas

2.3. Other hazards

Other hazards not contributing to the classification : Contact with liquid may cause cold burns/frostbite.

2.4. Unknown acute toxicity (GHS-CA)

No data available

SECTION 3: Composition/information on ingredients

3.1. Substances

Name	CAS No.	% (Vol.)	Common Name (synonyms)
Hydrogen sulfide (Main constituent)	(CAS No) 7783-06-4	100	Hydrogen sulfide (H ₂ S) / Hydrogen sulphide / Sulfur hydride / Sulfureted hydrogen / Dihydrogen sulphide / Hydrogensulfide

3.2. Mixtures

Not applicable

SECTION 4: First-aid measures

4.1. Description of first aid measures

First-aid measures after inhalation : Remove to fresh air and keep at rest in a position comfortable for breathing. If not breathing, give artificial respiration. If breathing is difficult, trained personnel should give oxygen. Call a physician.

First-aid measures after skin contact : The liquid may cause frostbite. For exposure to liquid, immediately warm frostbite area with warm water not to exceed 105°F (41°C). Water temperature should be tolerable to normal skin. Maintain skin warming for at least 15 minutes or until normal coloring and sensation have returned to the affected area. In case of massive exposure, remove clothing while showering with warm water. Seek medical evaluation and treatment as soon as possible.

First-aid measures after eye contact : Immediately flush eyes thoroughly with water for at least 15 minutes. Hold the eyelids open and away from the eyeballs to ensure that all surfaces are flushed thoroughly. Contact an ophthalmologist immediately.

First-aid measures after ingestion : Ingestion is not considered a potential route of exposure.

4.2. Most important symptoms and effects (acute and delayed)

No additional information available

4.3. Immediate medical attention and special treatment, if necessary

Other medical advice or treatment : Obtain medical assistance. Treat with corticosteroid spray as soon as possible after inhalation.

SECTION 5: Fire-fighting measures

5.1. Suitable extinguishing media

Suitable extinguishing media : Carbon dioxide, Dry chemical, Water spray or fog. Use extinguishing media appropriate for surrounding fire.

5.2. Unsuitable extinguishing media

No additional information available

This document is only controlled while on the Praxair Canada Inc. website and a copy of this controlled version is available for download. Praxair cannot assure the integrity or accuracy of any version of this document after it has been downloaded or removed from our website.

EN (English)

SDS ID : E-4611

2/9

Permian Resources Corporation	H ₂ S Contingency Plan Barney 223H & 423H	Eddy County, New Mexico
-------------------------------	---	-------------------------



Hydrogen sulfide

Safety Data Sheet E-4611

according to the Hazardous Products Regulation (February 11, 2015)

Date of issue: 10-15-1979

Revision date: 08-10-2016

Supersedes: 10-15-2013

5.3. Specific hazards arising from the hazardous product

- Fire hazard : **EXTREMELY FLAMMABLE GAS**. If venting or leaking gas catches fire, do not extinguish flames. Flammable vapors may spread from leak, creating an explosive reignition hazard. Vapors can be ignited by pilot lights, other flames, smoking, sparks, heaters, electrical equipment, static discharge, or other ignition sources at locations distant from product handling point. Explosive atmospheres may linger. Before entering an area, especially a confined area, check the atmosphere with an appropriate device.
- Explosion hazard : **EXTREMELY FLAMMABLE GAS**. Forms explosive mixtures with air and oxidizing agents.
- Reactivity : No reactivity hazard other than the effects described in sub-sections below.
- Reactivity in case of fire : No reactivity hazard other than the effects described in sub-sections below.

5.4. Special protective equipment and precautions for fire-fighters

- Firefighting instructions : **DANGER! Toxic, flammable liquefied gas**
- Evacuate all personnel from the danger area. Use self-contained breathing apparatus (SCBA) and protective clothing. Immediately cool containers with water from maximum distance. Stop flow of gas if safe to do so, while continuing cooling water spray. Remove ignition sources if safe to do so. Remove containers from area of fire if safe to do so. On-site fire brigades must comply with their provincial and local fire code regulations.
- Special protective equipment for fire fighters : Standard protective clothing and equipment (Self Contained Breathing Apparatus) for fire fighters.
- Other information : Containers are equipped with a pressure relief device. (Exceptions may exist where authorized by TC.).

SECTION 6: Accidental release measures

6.1. Personal precautions, protective equipment and emergency procedures

- General measures : **DANGER! Toxic, flammable liquefied gas**. Forms explosive mixtures with air and oxidizing agents. Immediately evacuate all personnel from danger area. Use self-contained breathing apparatus where needed. Remove all sources of ignition if safe to do so. Reduce vapors with fog or fine water spray, taking care not to spread liquid with water. Shut off flow if safe to do so. Ventilate area or move container to a well-ventilated area. Flammable vapors may spread from leak and could explode if reignited by sparks or flames. Explosive atmospheres may linger. Before entering area, especially confined areas, check atmosphere with an appropriate device.

6.2. Methods and materials for containment and cleaning up

- Methods for cleaning up : Try to stop release. Reduce vapour with fog or fine water spray. Prevent waste from contaminating the surrounding environment. Prevent soil and water pollution. Dispose of contents/container in accordance with local/regional/national/international regulations. Contact supplier for any special requirements.

6.3. Reference to other sections

For further information refer to section 8: Exposure controls/personal protection

SECTION 7: Handling and storage

7.1. Precautions for safe handling

- Precautions for safe handling : Leak-check system with soapy water; never use a flame
- All piped systems and associated equipment must be grounded
- Keep away from heat, hot surfaces, sparks, open flames and other ignition sources. No smoking. Use only non-sparking tools. Use only explosion-proof equipment
- Wear leather safety gloves and safety shoes when handling cylinders. Protect cylinders from physical damage; do not drag, roll, slide or drop. While moving cylinder, always keep in place removable valve cover. Never attempt to lift a cylinder by its cap; the cap is intended solely to protect the valve. When moving cylinders, even for short distances, use a cart (trolley, hand truck, etc.) designed to transport cylinders. Never insert an object (e.g. wrench, screwdriver, pry bar) into cap openings; doing so may damage the valve and cause a leak. Use an adjustable strap wrench to remove over-tight or rusted caps. Slowly open the valve. If the valve is hard to open, discontinue use and contact your supplier. Close the container valve after each use; keep closed even when empty. Never apply flame or localized heat directly to any part of the container. High temperatures may damage the container and could cause the pressure relief device to fail prematurely, venting the container contents. For other precautions in using this product, see section 16.

This document is only controlled while on the Praxair Canada Inc. website and a copy of this controlled version is available for download. Praxair cannot assure the integrity or accuracy of any version of this document after it has been downloaded or removed from our website.

EN (English)

SDS ID : E-4611

3/9

Permian Resources Corporation	H ₂ S Contingency Plan Barney 223H & 423H	Eddy County, New Mexico
-------------------------------	---	-------------------------



Hydrogen sulfide

Safety Data Sheet E-4611

according to the Hazardous Products Regulation (February 11, 2015)

Date of issue: 10-15-1979

Revision date: 08-10-2016

Supersedes: 10-15-2013

7.2. Conditions for safe storage, including any incompatibilities

Storage conditions

: Store only where temperature will not exceed 125°F (52°C). Post "No Smoking/No Open Flames" signs in storage and use areas. There must be no sources of ignition. Separate packages and protect against potential fire and/or explosion damage following appropriate codes and requirements (e.g. NFPA 30, NFPA 55, NFPA 70, and/or NFPA 221 in the U.S.) or according to requirements determined by the Authority Having Jurisdiction (AHJ). Always secure containers upright to keep them from falling or being knocked over. Install valve protection cap, if provided, firmly in place by hand when the container is not in use. Store full and empty containers separately. Use a first-in, first-out inventory system to prevent storing full containers for long periods. For other precautions in using this product, see section 16

OTHER PRECAUTIONS FOR HANDLING, STORAGE, AND USE: When handling product under pressure, use piping and equipment adequately designed to withstand the pressures to be encountered. Never work on a pressurized system. Use a back flow preventive device in the piping. Gases can cause rapid suffocation because of oxygen deficiency; store and use with adequate ventilation. If a leak occurs, close the container valve and blow down the system in a safe and environmentally correct manner in compliance with all international, federal/national, state/provincial, and local laws; then repair the leak. Never place a container where it may become part of an electrical circuit.

SECTION 8: Exposure controls/personal protection

8.1. Control parameters

Hydrogen sulfide (7783-06-4)		
USA - ACGIH	ACGIH TLV-TWA (ppm)	1 ppm
USA - ACGIH	ACGIH TLV-STEL (ppm)	5 ppm
USA - OSHA	OSHA PEL (Ceiling) (ppm)	20 ppm
Canada (Quebec)	VECD (mg/m ³)	21 mg/m ³
Canada (Quebec)	VECD (ppm)	15 ppm
Canada (Quebec)	VEMP (mg/m ³)	14 mg/m ³
Canada (Quebec)	VEMP (ppm)	10 ppm
Alberta	OEL Ceiling (mg/m ³)	21 mg/m ³
Alberta	OEL Ceiling (ppm)	15 ppm
Alberta	OEL TWA (mg/m ³)	14 mg/m ³
Alberta	OEL TWA (ppm)	10 ppm
British Columbia	OEL Ceiling (ppm)	10 ppm
Manitoba	OEL STEL (ppm)	5 ppm
Manitoba	OEL TWA (ppm)	1 ppm
New Brunswick	OEL STEL (mg/m ³)	21 mg/m ³
New Brunswick	OEL STEL (ppm)	15 ppm
New Brunswick	OEL TWA (mg/m ³)	14 mg/m ³
New Brunswick	OEL TWA (ppm)	10 ppm
New Foundland & Labrador	OEL STEL (ppm)	5 ppm
New Foundland & Labrador	OEL TWA (ppm)	1 ppm
Nova Scotia	OEL STEL (ppm)	5 ppm
Nova Scotia	OEL TWA (ppm)	1 ppm
Nunavut	OEL Ceiling (mg/m ³)	28 mg/m ³
Nunavut	OEL Ceiling (ppm)	20 ppm
Nunavut	OEL STEL (mg/m ³)	21 mg/m ³
Nunavut	OEL STEL (ppm)	15 ppm
Nunavut	OEL TWA (mg/m ³)	14 mg/m ³
Nunavut	OEL TWA (ppm)	10 ppm
Northwest Territories	OEL STEL (ppm)	15 ppm

This document is only controlled while on the Praxair Canada Inc. website and a copy of this controlled version is available for download. Praxair cannot assure the integrity or accuracy of any version of this document after it has been downloaded or removed from our website.

EN (English)

SDS ID : E-4611

4/9

Permian Resources Corporation	H ₂ S Contingency Plan Barney 223H & 423H	Eddy County, New Mexico
-------------------------------	---	-------------------------



Hydrogen sulfide

Safety Data Sheet E-4611

according to the Hazardous Products Regulation (February 11, 2015)
Date of issue: 10-15-1979 Revision date: 08-10-2016 Supersedes: 10-15-2013




Hydrogen sulfide (7783-06-4)		
Northwest Territories	OEL TWA (ppm)	10 ppm
Ontario	OEL STEL (ppm)	15 ppm
Ontario	OEL TWA (ppm)	10 ppm
Prince Edward Island	OEL STEL (ppm)	5 ppm
Prince Edward Island	OEL TWA (ppm)	1 ppm
Québec	VECD (mg/m³)	21 mg/m³
Québec	VECD (ppm)	15 ppm
Québec	VEMP (mg/m³)	14 mg/m³
Québec	VEMP (ppm)	10 ppm
Saskatchewan	OEL STEL (ppm)	15 ppm
Saskatchewan	OEL TWA (ppm)	10 ppm
Yukon	OEL STEL (mg/m³)	27 mg/m³
Yukon	OEL STEL (ppm)	15 ppm
Yukon	OEL TWA (mg/m³)	15 mg/m³
Yukon	OEL TWA (ppm)	10 ppm

8.2. Appropriate engineering controls

Appropriate engineering controls : Use corrosion-resistant equipment. Use an explosion-proof local exhaust system. Local exhaust and general ventilation must be adequate to meet exposure standards. **MECHANICAL (GENERAL): Inadequate - Use only in a closed system.** Use explosion proof equipment and lighting.

8.3. Individual protection measures/Personal protective equipment

Personal protective equipment : Safety glasses. Face shield. Gloves.



Hand protection : Wear work gloves when handling containers. Wear heavy rubber gloves where contact with product may occur.

Eye protection : Wear goggles and a face shield when transfilling or breaking transfer connections. Select in accordance with the current CSA standard Z94.3, "Industrial Eye and Face Protection", and any provincial regulations, local bylaws or guidelines.

Respiratory protection : **Respiratory protection:** Use respirable fume respirator or air supplied respirator when working in confined space or where local exhaust or ventilation does not keep exposure below TLV. Select in accordance with provincial regulations, local bylaws or guidelines. Selection should be based on the current CSA standard Z94.4, "Selection, Care, and Use of Respirators." Respirators should also be approved by NIOSH and MSHA. For emergencies or instances with unknown exposure levels, use a self-contained breathing apparatus (SCBA).

Thermal hazard protection : Wear cold insulating gloves when transfilling or breaking transfer connections. Standard EN 511 - Cold insulating gloves.

Other information : **Other protection :** Safety shoes for general handling at customer sites. Metatarsal shoes and cuffless trousers for cylinder handling at packaging and filling plants. Select in accordance with the current CSA standard Z195, "Protective Foot Wear", and any provincial regulations, local bylaws or guidelines. For working with flammable and oxidizing materials, consider the use of flame resistant anti-static safety clothing.

SECTION 9: Physical and chemical properties	
9.1. Information on basic physical and chemical properties	
Physical state	: Gas
Appearance	: Colorless gas. Colorless liquid at low temperature or under high pressure.
Molecular mass	: 34 g/mol
Colour	: Colourless.
Odour	: Odour can persist. Poor warning properties at low concentrations. Rotten eggs.
Odour threshold	: Odour threshold is subjective and inadequate to warn of overexposure.

Permian Resources Corporation	H ₂ S Contingency Plan Barney 223H & 423H	Eddy County, New Mexico
-------------------------------	---	-------------------------



Hydrogen sulfide

Safety Data Sheet E-4611

according to the Hazardous Products Regulation (February 11, 2015)

Date of issue: 10-15-1979 Revision date: 08-10-2016 Supersedes: 10-15-2013

pH	: Not applicable.
pH solution	: No data available
Relative evaporation rate (butylacetate=1)	: No data available
Relative evaporation rate (ether=1)	: Not applicable.
Melting point	: -86 °C
Freezing point	: -82.9 °C
Boiling point	: -60.3 °C
Flash point	: Not applicable.
Critical temperature	: 100.4 °C
Auto-ignition temperature	: 260 °C
Decomposition temperature	: No data available
Vapour pressure	: 1880 kPa
Vapour pressure at 50 °C	: No data available
Critical pressure	: 8940 kPa
Relative vapour density at 20 °C	: >=
Relative density	: No data available
Relative density of saturated gas/air mixture	: No data available
Density	: No data available
Relative gas density	: 1.2
Solubility	: Water: 3980 mg/l
Log Pow	: Not applicable.
Log Kow	: Not applicable.
Viscosity, kinematic	: Not applicable.
Viscosity, dynamic	: Not applicable.
Viscosity, kinematic (calculated value) (40 °C)	: No data available
Explosive properties	: Not applicable.
Oxidizing properties	: None.
Flammability (solid, gas)	: 4.3 - 46 vol %

9.2. Other information

Gas group	: Liquefied gas
Additional information	: Gas/vapour heavier than air. May accumulate in confined spaces, particularly at or below ground level

SECTION 10: Stability and reactivity

10.1. Reactivity

Reactivity	: No reactivity hazard other than the effects described in sub-sections below.
Chemical stability	: Stable under normal conditions.
Possibility of hazardous reactions	: May react violently with oxidants. Can form explosive mixture with air.
Conditions to avoid	: Avoid moisture in installation systems. Keep away from heat/sparks/open flames/hot surfaces. – No smoking.
Incompatible materials	: Ammonia. Bases. Bromine pentafluoride. Chlorine trifluoride. chromium trioxide. (and heat). Copper. (powdered). Fluorine. Lead. Lead oxide. Mercury. Nitric acid. Nitrogen trifluoride. nitrogen sulfide. Organic compounds. Oxidizing agents. Oxygen difluoride. Rubber. Sodium. (and moisture). Water.
Hazardous decomposition products	: Thermal decomposition may produce : Sulfur. Hydrogen.

SECTION 11: Toxicological information

11.1. Information on toxicological effects

Acute toxicity (oral)	: Not classified
Acute toxicity (dermal)	: Not classified

Permian Resources Corporation

H₂S Contingency Plan
Barney 223H & 423H

Eddy County, New Mexico



Hydrogen sulfide

Safety Data Sheet E-4611

according to the Hazardous Products Regulation (February 11, 2015)

Date of issue: 10-15-1979

Revision date: 08-10-2016

Supersedes: 10-15-2013

Acute toxicity (inhalation) : Inhalation:gas: FATAL IF INHALED.

Hydrogen sulfide (f)7783-06-4

LC50 inhalation rat (mg/l)	0.99 mg/l (Exposure time: 1 h)
LC50 inhalation rat (ppm)	356 ppm/4h
ATE CA (gases)	356.00000000 ppmv/4h
ATE CA (vapours)	0.99000000 mg/l/4h
ATE CA (dust,mist)	0.99000000 mg/l/4h

Skin corrosion/irritation : Not classified

pH: Not applicable.

Serious eye damage/irritation : Not classified

pH: Not applicable.

Respiratory or skin sensitization : Not classified

Germ cell mutagenicity : Not classified

Carcinogenicity : Not classified

Reproductive toxicity : Not classified

Specific target organ toxicity (single exposure) : MAY CAUSE RESPIRATORY IRRITATION.

Specific target organ toxicity (repeated exposure) : Not classified

Aspiration hazard : Not classified

SECTION 12: Ecological information

12.1. Toxicity

Ecology - general : VERY TOXIC TO AQUATIC LIFE.

Hydrogen sulfide (7783-06-4)

LC50 fish 1	0.0448 mg/l (Exposure time: 96 h - Species: Lepomis macrochirus [flow-through])
LC50 fish 2	0.016 mg/l (Exposure time: 96 h - Species: Pimephales promelas [flow-through])

12.2. Persistence and degradability

Hydrogen sulfide (7783-06-4)

Persistence and degradability	Not applicable for inorganic gases.
-------------------------------	-------------------------------------

12.3. Bioaccumulative potential

Hydrogen sulfide (7783-06-4)

BCF fish 1	(no bioaccumulation expected)
Log Pow	Not applicable.
Log Kow	Not applicable.
Bioaccumulative potential	No data available.

12.4. Mobility in soil

Hydrogen sulfide (7783-06-4)

Mobility in soil	No data available.
Log Pow	Not applicable.
Log Kow	Not applicable.
Ecology - soil	Because of its high volatility, the product is unlikely to cause ground or water pollution.

12.5. Other adverse effects

Other adverse effects : May cause pH changes in aqueous ecological systems.

Effect on the ozone layer : None

Effect on global warming : No known effects from this product

This document is only controlled while on the Praxair Canada Inc. website and a copy of this controlled version is available for download. Praxair cannot assure the integrity or accuracy of any version of this document after it has been downloaded or removed from our website.

EN (English)

SDS ID : E-4611

7/9

Permian Resources Corporation	H ₂ S Contingency Plan Barney 223H & 423H	Eddy County, New Mexico
-------------------------------	---	-------------------------



Hydrogen sulfide

Safety Data Sheet E-4611

according to the Hazardous Products Regulation (February 11, 2015)

Date of issue: 10-15-1979

Revision date: 08-10-2016

Supersedes: 10-15-2013

SECTION 13: Disposal considerations

13.1. Disposal methods

Waste disposal recommendations : Do not attempt to dispose of residual or unused quantities. Return container to supplier.

SECTION 14: Transport information

14.1. Basic shipping description

In accordance with TDG

TDG

UN-No. (TDG) : UN1053
 TDG Primary Hazard Classes : 2.3 - Class 2.3 - Toxic Gas.
 TDG Subsidiary Classes : 2.1
 Proper shipping name : HYDROGEN SULPHIDE

ERAP Index : 500
 Explosive Limit and Limited Quantity Index : 0
 Passenger Carrying Ship Index : Forbidden
 Passenger Carrying Road Vehicle or Passenger : Forbidden
 Carrying Railway Vehicle Index

14.3. Air and sea transport

IMDG

UN-No. (IMDG) : 1053
 Proper Shipping Name (IMDG) : HYDROGEN SULPHIDE
 Class (IMDG) : 2 - Gases
 MFAG-No : 117

IATA

UN-No. (IATA) : 1053
 Proper Shipping Name (IATA) : Hydrogen sulphide
 Class (IATA) : 2

SECTION 15: Regulatory information

15.1. National regulations

Hydrogen sulfide (7783-06-4)

Listed on the Canadian DSL (Domestic Substances List)

15.2. International regulations

Hydrogen sulfide (7783-06-4)

Listed on the AICS (Australian Inventory of Chemical Substances)
 Listed on IECSC (Inventory of Existing Chemical Substances Produced or Imported in China)
 Listed on the EEC inventory EINECS (European Inventory of Existing Commercial Chemical Substances)
 Listed on the Japanese ENCS (Existing & New Chemical Substances) inventory
 Listed on the Korean ECL (Existing Chemicals List)
 Listed on NZIoC (New Zealand Inventory of Chemicals)
 Listed on PICCS (Philippines Inventory of Chemicals and Chemical Substances)
 Listed on the United States TSCA (Toxic Substances Control Act) inventory
 Listed on INSQ (Mexican national Inventory of Chemical Substances)

SECTION 16: Other information

Date of issue : 15/10/1979
 Revision date : 10/08/2016
 Supersedes : 15/10/2013

Indication of changes:

Training advice : Users of breathing apparatus must be trained. Ensure operators understand the toxicity hazard.
 Ensure operators understand the flammability hazard.

This document is only controlled while on the Praxair Canada Inc. website and a copy of this controlled version is available for download. Praxair cannot assure the integrity or accuracy of any version of this document after it has been downloaded or removed from our website.

EN (English)

SDS ID : E-4611

8/9

Permian Resources Corporation

H₂S Contingency Plan
Barney 223H & 423H

Eddy County, New Mexico



Hydrogen sulfide

Safety Data Sheet E-4611

according to the Hazardous Products Regulation (February 11, 2015)

Date of issue: 10-15-1979

Revision date: 08-10-2016

Supersedes: 10-15-2013

Other information

: When you mix two or more chemicals, you can create additional, unexpected hazards. Obtain and evaluate the safety information for each component before you produce the mixture. Consult an industrial hygienist or other trained person when you evaluate the end product. Before using any plastics, confirm their compatibility with this product

Praxair asks users of this product to study this SDS and become aware of the product hazards and safety information. To promote safe use of this product, a user should (1) notify employees, agents, and contractors of the information in this SDS and of any other known product hazards and safety information, (2) furnish this information to each purchaser of the product, and (3) ask each purchaser to notify its employees and customers of the product hazards and safety information

The opinions expressed herein are those of qualified experts within Praxair Canada Inc. We believe that the information contained herein is current as of the date of this Safety Data Sheet. Since the use of this information and the conditions of use are not within the control of Praxair Canada Inc, it is the user's obligation to determine the conditions of safe use of the product. Praxair Canada Inc, SDSs are furnished on sale or delivery by Praxair Canada Inc, or the independent distributors and suppliers who package and sell our products. To obtain current SDSs for these products, contact your Praxair sales representative, local distributor, or supplier, or download from www.praxair.ca. If you have questions regarding Praxair SDSs, would like the document number and date of the latest SDS, or would like the names of the Praxair suppliers in your area, phone or write Praxair Canada Inc, (Phone: 1-888-257-5149; Address: Praxair Canada Inc, 1 City Centre Drive, Suite 1200, Mississauga, Ontario, L5B 1M2).

PRAXAIR and the Flowing Airstream design are trademarks or registered trademarks of Praxair Technology, Inc. in the United States and/or other countries.

NFPA health hazard

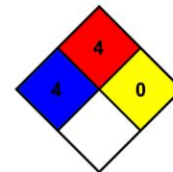
: 4 - Very short exposure could cause death or serious residual injury even though prompt medical attention was given.

NFPA fire hazard

: 4 - Will rapidly or completely vaporize at normal pressure and temperature, or is readily dispersed in air and will burn readily.

NFPA reactivity

: 0 - Normally stable, even under fire exposure conditions, and are not reactive with water.



HMS III Rating

Health

: 2 Moderate Hazard - Temporary or minor injury may occur

Flammability

: 4 Severe Hazard - Flammable gases, or very volatile flammable liquids with flash points below 73 F, and boiling points below 100 F. Materials may ignite spontaneously with air. (Class IA)

Physical

: 2 Moderate Hazard - Materials that are unstable and may undergo violent chemical changes at normal temperature and pressure with low risk for explosion. Materials may react violently with water or form peroxides upon exposure to air.

SDS Canada (GHS) - Praxair

This information is based on our current knowledge and is intended to describe the product for the purposes of health, safety and environmental requirements only. It should not therefore be construed as guaranteeing any specific property of the product.

This document is only controlled while on the Praxair Canada Inc. website and a copy of this controlled version is available for download. Praxair cannot assure the integrity or accuracy of any version of this document after it has been downloaded or removed from our website.

EN (English)

SDS ID : E-4611

9/9

Appendix B

Permian Resources Corporation	H ₂ S Contingency Plan Barney 223H & 423H	Eddy County, New Mexico
-------------------------------	---	-------------------------

SO₂ SDS

Safety Data Sheet

Material Name: SULFUR DIOXIDE

SDS ID: MAT22290

Section 1 - PRODUCT AND COMPANY IDENTIFICATION**Material Name**

SULFUR DIOXIDE

Synonyms

MTG MSDS 80; SULFUROUS ACID ANHYDRIDE; SULFUROUS OXIDE; SULPHUR DIOXIDE;
SULFUROUS ANHYDRIDE; FERMENTICIDE LIQUID; SULFUR DIOXIDE(SO₂); SULFUR OXIDE;
SULFUR OXIDE(SO₂)

Chemical Family

inorganic, gas

Product Description

Classification determined in accordance with Compressed Gas Association standards.

Product Use

Industrial and Specialty Gas Applications.

Restrictions on Use

None known.

Details of the supplier of the safety data sheet

MATHESON TRI-GAS, INC.

3 Mountainview Road

Warren, NJ 07059

General Information: 1-800-416-2505

Emergency #: 1-800-424-9300 (CHEMTREC)

Outside the US: 703-527-3887 (Call collect)

Section 2 - HAZARDS IDENTIFICATION**Classification in accordance with paragraph (d) of 29 CFR 1910.1200.**

Gases Under Pressure - Liquefied gas

Acute Toxicity - Inhalation - Gas - Category 3

Skin Corrosion/Irritation - Category 1B

Serious Eye Damage/Eye Irritation - Category 1

Simple Asphyxiant

GHS Label Elements**Symbol(s)****Signal Word**

Danger

Hazard Statement(s)

Contains gas under pressure; may explode if heated.

Toxic if inhaled.

Causes severe skin burns and eye damage.

May displace oxygen and cause rapid suffocation.

Precautionary Statement(s)**Prevention**

Use only outdoors or in a well-ventilated area.

Wear protective gloves/protective clothing/eye protection/face protection.

Permian Resources Corporation	H ₂ S Contingency Plan Barney 223H & 423H	Eddy County, New Mexico
-------------------------------	---	-------------------------



Safety Data Sheet

Material Name: SULFUR DIOXIDE

SDS ID: MAT22290

Wash thoroughly after handling.

Do not breathe dusts or mists.

Response

IF INHALED: Remove person to fresh air and keep comfortable for breathing.

IF IN EYES: Rinse cautiously with water for several minutes. Remove contact lenses, if present and easy to do.

Continue rinsing.

IF ON SKIN (or hair): Remove/take off immediately all contaminated clothing. Rinse skin with water/shower.

Wash contaminated clothing before reuse.

IF SWALLOWED: Rinse mouth. Do NOT induce vomiting.

Immediately call a POISON CENTER or doctor.

Specific treatment (see label).

Storage

Store in a well-ventilated place. Keep container tightly closed.

Store locked up.

Protect from sunlight.

Disposal

Dispose of contents/container in accordance with local/regional/national/international regulations.

Other Hazards

Contact with liquified gas may cause frostbite.

Section 3 - COMPOSITION / INFORMATION ON INGREDIENTS

CAS	Component Name	Percent
7446-09-5	Sulfur dioxide	100.0

Section 4 - FIRST AID MEASURES

Inhalation

IF INHALED: Remove person to fresh air and keep at rest in a position comfortable for breathing. Get immediate medical attention.

Skin

IF ON SKIN (or hair): Remove/take off immediately all contaminated clothing. Rinse skin with water/shower. Wash contaminated clothing before reuse. If frostbite or freezing occur, immediately flush with plenty of lukewarm water (105-115°F; 41-46°C). If warm water is not available, gently wrap affected parts in blankets. DO NOT induce vomiting. Get immediate medical attention.

Eyes

IF IN EYES: Rinse cautiously with water for several minutes. Remove contact lenses, if present and easy to do.

Continue rinsing. Get immediate medical attention.

Ingestion

IF SWALLOWED: Rinse mouth. Do NOT induce vomiting. Get immediate medical attention.

Most Important Symptoms/Effects

Acute

Toxic if inhaled, frostbite, suffocation, respiratory tract burns, skin burns, eye burns

Delayed

No information on significant adverse effects.

Indication of any immediate medical attention and special treatment needed

Treat symptomatically and supportively.

Note to Physicians

For inhalation, consider oxygen.

Permian Resources Corporation	H ₂ S Contingency Plan Barney 223H & 423H	Eddy County, New Mexico
-------------------------------	---	-------------------------



Safety Data Sheet

Material Name: SULFUR DIOXIDE

SDS ID: MAT22290

Section 5 - FIRE FIGHTING MEASURES

Extinguishing Media

Suitable Extinguishing Media

carbon dioxide, regular dry chemical, Large fires: Use regular foam or flood with fine water spray.

Unsuitable Extinguishing Media

None known.

Special Hazards Arising from the Chemical

Negligible fire hazard.

Hazardous Combustion Products

sulfur oxides

Fire Fighting Measures

Move container from fire area if it can be done without risk. Cool containers with water spray until well after the fire is out. Stay away from the ends of tanks. Keep unnecessary people away, isolate hazard area and deny entry.

Special Protective Equipment and Precautions for Firefighters

Wear full protective fire fighting gear including self contained breathing apparatus (SCBA) for protection against possible exposure.

Section 6 - ACCIDENTAL RELEASE MEASURES

Personal Precautions, Protective Equipment and Emergency Procedures

Wear personal protective clothing and equipment, see Section 8.

Methods and Materials for Containment and Cleaning Up

Keep unnecessary people away, isolate hazard area and deny entry. Stay upwind and keep out of low areas.

Ventilate closed spaces before entering. Evacuation radius: 150 feet. Stop leak if possible without personal risk.

Reduce vapors with water spray. Do not get water directly on material.

Environmental Precautions

Avoid release to the environment.

Section 7 - HANDLING AND STORAGE

Precautions for Safe Handling

Do not get in eyes, on skin, or on clothing. Do not breathe gas, fumes, vapor, or spray. Wash hands thoroughly after handling. Use only outdoors or in a well-ventilated area. Wear protective gloves/protective clothing/eye protection/face protection. Contaminated work clothing should not be allowed out of the workplace. Do not eat, drink or smoke when using this product. Keep only in original container. Avoid release to the environment.

Conditions for Safe Storage, Including any Incompatibilities

Store in a well-ventilated place. Keep container tightly closed.

Store locked up.

Protect from sunlight.

Store and handle in accordance with all current regulations and standards. Protect from physical damage. Store outside or in a detached building. Keep separated from incompatible substances.

Incompatible Materials

bases, combustible materials, halogens, metal carbide, metal oxides, metals, oxidizing materials, peroxides, reducing agents

Section 8 - EXPOSURE CONTROLS / PERSONAL PROTECTION

Component Exposure Limits

Sulfur dioxide	7446-09-5
ACGIH:	0.25 ppm STEL

Permian Resources Corporation	H ₂ S Contingency Plan Barney 223H & 423H	Eddy County, New Mexico
-------------------------------	---	-------------------------

**MATHESON**

ask...The Gas Professionals™

Safety Data Sheet**Material Name: SULFUR DIOXIDE****SDS ID: MAT22290**

NIOSH:	2 ppm TWA ; 5 mg/m ³ TWA
	5 ppm STEL ; 13 mg/m ³ STEL
	100 ppm IDLH
OSHA (US):	5 ppm TWA ; 13 mg/m ³ TWA
Mexico:	0.25 ppm STEL [PPT-CT]

ACGIH - Threshold Limit Values - Biological Exposure Indices (BEI)

There are no biological limit values for any of this product's components.

Engineering Controls

Provide local exhaust or process enclosure ventilation system. Ensure compliance with applicable exposure limits.

Individual Protection Measures, such as Personal Protective Equipment**Eye/face protection**

Wear splash resistant safety goggles with a faceshield. Contact lenses should not be worn. Provide an emergency eye wash fountain and quick drench shower in the immediate work area.

Skin Protection

Wear appropriate chemical resistant clothing. Wear chemical resistant clothing to prevent skin contact.

Respiratory Protection

Any self-contained breathing apparatus that has a full facepiece and is operated in a pressure-demand or other positive-pressure mode.

Glove Recommendations

Wear appropriate chemical resistant gloves.

Section 9 - PHYSICAL AND CHEMICAL PROPERTIES

Appearance	colorless gas	Physical State	gas
Odor	irritating odor	Color	colorless
Odor Threshold	3 - 5 ppm	pH	(Acidic in solution)
Melting Point	-73 °C (-99 °F)	Boiling Point	-10 °C (14 °F)
Boiling Point Range	Not available	Freezing point	Not available
Evaporation Rate	>1 (Butyl acetate = 1)	Flammability (solid, gas)	Not available
Autoignition Temperature	Not available	Flash Point	(Not flammable)
Lower Explosive Limit	Not available	Decomposition temperature	Not available
Upper Explosive Limit	Not available	Vapor Pressure	2432 mmHg @ 20 °C
Vapor Density (air=1)	2.26	Specific Gravity (water=1)	1.462 at -10 °C

Permian Resources Corporation	H ₂ S Contingency Plan Barney 223H & 423H	Eddy County, New Mexico
-------------------------------	---	-------------------------

**MATHESON**

ask...The Gas Professionals™

Safety Data Sheet**Material Name: SULFUR DIOXIDE****SDS ID: MAT22290**

Water Solubility	22.8 % (@ 0 °C)	Partition coefficient: n-octanol/water	Not available
Viscosity	Not available	Kinematic viscosity	Not available
Solubility (Other)	Not available	Density	Not available
Physical Form	liquified gas	Molecular Formula	S-O ₂
Molecular Weight	64.06		

Solvent Solubility**Soluble**

alcohol, acetic acid, sulfuric acid, ether, chloroform, Benzene, sulfuryl chloride, nitrobenzenes, Toluene, acetone

Section 10 - STABILITY AND REACTIVITY**Reactivity**

No reactivity hazard is expected.

Chemical Stability

Stable at normal temperatures and pressure.

Possibility of Hazardous Reactions

Will not polymerize.

Conditions to Avoid

Minimize contact with material. Containers may rupture or explode if exposed to heat.

Incompatible Materials

bases, combustible materials, halogens, metal carbide, metal oxides, metals, oxidizing materials, peroxides, reducing agents

Hazardous decomposition products

oxides of sulfur

Section 11 - TOXICOLOGICAL INFORMATION**Information on Likely Routes of Exposure****Inhalation**

Toxic if inhaled. Causes damage to respiratory system, burns, difficulty breathing

Skin Contact

skin burns

Eye Contact

eye burns

Ingestion

burns, nausea, vomiting, diarrhea, stomach pain

Acute and Chronic Toxicity**Component Analysis - LD50/LC50**

The components of this material have been reviewed in various sources and the following selected endpoints are published:

Sulfur dioxide (7446-09-5)

Inhalation LC50 Rat 965 - 1168 ppm 4 h

Product Toxicity Data**Acute Toxicity Estimate**

No data available.

Immediate Effects

Permian Resources Corporation	H ₂ S Contingency Plan Barney 223H & 423H	Eddy County, New Mexico
-------------------------------	---	-------------------------

**MATHESON**

ask...The Gas Professionals™

Safety Data Sheet**Material Name: SULFUR DIOXIDE****SDS ID: MAT22290**

Toxic if inhaled, frostbite, suffocation, respiratory tract burns, skin burns, eye burns

Delayed Effects

No information on significant adverse effects.

Irritation/Corrosivity Data

respiratory tract burns, skin burns, eye burns

Respiratory Sensitization

No data available.

Dermal Sensitization

No data available.

Component Carcinogenicity

Sulfur dioxide	7446-09-5
ACGIH:	A4 - Not Classifiable as a Human Carcinogen
IARC:	Monograph 54 [1992] (Group 3 (not classifiable))

Germ Cell Mutagenicity

No data available.

Tumorigenic Data

No data available.

Reproductive Toxicity

No data available.

Specific Target Organ Toxicity - Single Exposure

No target organs identified.

Specific Target Organ Toxicity - Repeated Exposure

No target organs identified.

Aspiration hazard

Not applicable.

Medical Conditions Aggravated by Exposure

respiratory disorders

Section 12 - ECOLOGICAL INFORMATION**Component Analysis - Aquatic Toxicity**

No LOLI ecotoxicity data are available for this product's components.

Persistence and Degradability

No data available.

Bioaccumulative Potential

No data available.

Mobility

No data available.

Section 13 - DISPOSAL CONSIDERATIONS**Disposal Methods**

Dispose of contents/container in accordance with local/regional/national/international regulations.

Component Waste Numbers

The U.S. EPA has not published waste numbers for this product's components.

Section 14 - TRANSPORT INFORMATION**US DOT Information:****Shipping Name:** SULFUR DIOXIDE

Permian Resources Corporation	H ₂ S Contingency Plan Barney 223H & 423H	Eddy County, New Mexico
-------------------------------	---	-------------------------



Safety Data Sheet

Material Name: SULFUR DIOXIDE

SDS ID: MAT22290

Hazard Class: 2.3

UN/NA #: UN1079

Required Label(s): 2.3

IMDG Information:

Shipping Name: SULPHUR DIOXIDE

Hazard Class: 2.3

UN#: UN1079

Required Label(s): 2.3

TDG Information:

Shipping Name: SULFUR DIOXIDE

Hazard Class: 2.3

UN#: UN1079

Required Label(s): 2.3

International Bulk Chemical Code

This material does not contain any chemicals required by the IBC Code to be identified as dangerous chemicals in bulk.

Section 15 - REGULATORY INFORMATION

U.S. Federal Regulations

This material contains one or more of the following chemicals required to be identified under SARA Section 302 (40 CFR 355 Appendix A), SARA Section 313 (40 CFR 372.65), CERCLA (40 CFR 302.4), TSCA 12(b), and/or require an OSHA process safety plan.

Sulfur dioxide	7446-09-5
SARA 302:	500 lb TPQ
OSHA (safety):	1000 lb TQ (Liquid)
SARA 304:	500 lb EPCRA RQ

SARA Section 311/312 (40 CFR 370 Subparts B and C) reporting categories

Gas Under Pressure; Acute toxicity; Skin Corrosion/Irritation; Serious Eye Damage/Eye Irritation; Simple Asphyxiant

U.S. State Regulations

The following components appear on one or more of the following state hazardous substances lists:

Component	CAS	CA	MA	MN	NJ	PA
Sulfur dioxide	7446-09-5	Yes	Yes	Yes	Yes	Yes

California Safe Drinking Water and Toxic Enforcement Act (Proposition 65)



WARNING

This product can expose you to chemicals including Sulfur dioxide , which is known to the State of California to cause birth defects or other reproductive harm. For more information go to www.P65Warnings.ca.gov.

Permian Resources Corporation	H ₂ S Contingency Plan Barney 223H & 423H	Eddy County, New Mexico
-------------------------------	---	-------------------------

**MATHESON**

ask. . . The Gas Professionals™

Safety Data Sheet**Material Name: SULFUR DIOXIDE****SDS ID: MAT22290**

Sulfur dioxide	7446-09-5
Repro/Dev. Tox	developmental toxicity , 7/29/2011

Component Analysis - Inventory
Sulfur dioxide (7446-09-5)

US	CA	AU	CN	EU	JP - ENCS	JP - ISHL	KR KECI - Annex 1	KR KECI - Annex 2
Yes	DSL	Yes	Yes	EIN	Yes	Yes	Yes	No

KR - REACH CCA	MX	NZ	PH	TH-TECI	TW, CN	VN (Draft)
No	Yes	Yes	Yes	Yes	Yes	Yes

Section 16 - OTHER INFORMATION**NFPA Ratings**

Health: 3 Fire: 0 Instability: 0

Hazard Scale: 0 = Minimal 1 = Slight 2 = Moderate 3 = Serious 4 = Severe

Summary of Changes

SDS update: 02/10/2016

Key / Legend

ACGIH - American Conference of Governmental Industrial Hygienists; ADR - European Road Transport; AU - Australia; BOD - Biochemical Oxygen Demand; C - Celsius; CA - Canada; CA/MA/MN/NJ/PA - California/Massachusetts/Minnesota/New Jersey/Pennsylvania*; CAS - Chemical Abstracts Service; CERCLA - Comprehensive Environmental Response, Compensation, and Liability Act; CFR - Code of Federal Regulations (US); CLP - Classification, Labelling, and Packaging; CN - China; CPR - Controlled Products Regulations; DFG - Deutsche Forschungsgemeinschaft; DOT - Department of Transportation; DSD - Dangerous Substance Directive; DSL - Domestic Substances List; EC - European Commission; EEC - European Economic Community; EIN - European Inventory of (Existing Commercial Chemical Substances); EINECS - European Inventory of Existing Commercial Chemical Substances; ENCS - Japan Existing and New Chemical Substance Inventory; EPA - Environmental Protection Agency; EU - European Union; F - Fahrenheit; F - Background (for Venezuela Biological Exposure Indices); IARC - International Agency for Research on Cancer; IATA - International Air Transport Association; ICAO - International Civil Aviation Organization; IDL - Ingredient Disclosure List; IDLH - Immediately Dangerous to Life and Health; IMDG - International Maritime Dangerous Goods; ISHL - Japan Industrial Safety and Health Law; IUCLID - International Uniform Chemical Information Database; JP - Japan; Kow - Octanol/water partition coefficient; KR KECI Annex 1 - Korea Existing Chemicals Inventory (KECI) / Korea Existing Chemicals List (KECL); KR KECI Annex 2 - Korea Existing Chemicals Inventory (KECI) / Korea Existing Chemicals List (KECL); KR - Korea; LD50/LC50 - Lethal Dose/ Lethal Concentration; KR REACH CCA - Korea Registration and Evaluation of Chemical Substances Chemical Control Act; LEL - Lower Explosive Limit; LLV - Level Limit Value; LOLI - List Of Lists™ - ChemADVISOR's Regulatory Database; MAK - Maximum Concentration Value in the Workplace; MEL - Maximum Exposure Limits; MX - Mexico; Ne- Non-specific; NFPA - National Fire Protection Agency; NIOSH - National Institute for Occupational Safety and Health; NJTSR - New Jersey Trade Secret Registry; Nq - Non-quantitative; NSL - Non-Domestic Substance List (Canada); NTP - National Toxicology Program; NZ - New Zealand; OSHA - Occupational Safety and Health Administration; PEL - Permissible Exposure Limit; PH - Philippines; RCRA - Resource Conservation and Recovery Act; REACH - Registration, Evaluation, Authorisation, and restriction of Chemicals; RID - European Rail Transport; SARA - Superfund Amendments and Reauthorization Act; Sc - Semi-quantitative; STEL - Short-term Exposure Limit;