

District I  
1625 N. French Dr., Hobbs, NM 88240  
District II  
811 S. First St., Artesia, NM 88210  
District III  
1000 Rio Brazos Rd., Aztec, NM 87410  
District IV  
1220 S. St. Francis Dr., Santa Fe, NM 87505

State of New Mexico  
Energy, Minerals & Natural Resources

Form C-104  
Revised August 1, 2011

Oil Conservation Division  
1220 South St. Francis Dr.  
Santa Fe, NM 87505

Submit one copy to appropriate District Office

☐ AMENDED REPORT

I. REQUEST FOR ALLOWABLE AND AUTHORIZATION TO TRANSPORT

<sup>1</sup> Operator name and Address Hilcorp Energy Company 382 Road 3100 Aztec, NM 87410		<sup>2</sup> OGRID Number 372171	
		<sup>3</sup> Reason for Filing Code/ Effective Date RC	
<sup>4</sup> API Number 30-04526586	<sup>5</sup> Pool Name Basin Fruitland Coal		<sup>6</sup> Pool Code 71629
<sup>7</sup> Property Code 318631	<sup>8</sup> Property Name Morris A		<sup>9</sup> Well Number 13A

II. <sup>10</sup> Surface Location

UI or lot no. I	Section 15	Township 30N	Range 11W	Lot Idn 3	Feet from the 1500	North/South Line South	Feet from the 1190	East/West Line East	County San Juan
--------------------	---------------	-----------------	--------------	--------------	-----------------------	---------------------------	-----------------------	------------------------	--------------------

<sup>11</sup> Bottom Hole Location

UL or lot no.	Section	Township	Range	Lot Idn	Feet from the	North/South Line	Feet from the	East/West Line	County Choose an item.
<sup>12</sup> Lse Code F	<sup>13</sup> Producing Method Code F		<sup>14</sup> Gas Connection Date		<sup>15</sup> C-129 Permit Number		<sup>16</sup> C-129 Effective Date		<sup>17</sup> C-129 Expiration Date

III. Oil and Gas Transporters


<sup>18</sup> Transporter OGRID	<sup>19</sup> Transporter Name and Address	<sup>20</sup> O/G/W
248440	Western Refinery	O
151618	Enterprise	G

IV. Well Completion Data

<sup>21</sup> Spud Date 11/16/1985	<sup>22</sup> Ready Date 5/11/2024	<sup>23</sup> TD 5155'	<sup>24</sup> PBTD 5040'	<sup>25</sup> Perforations 2041' – 2256'	<sup>26</sup> DHC, MC DHC 5381
<sup>27</sup> Hole Size		<sup>28</sup> Casing & Tubing Size		<sup>29</sup> Depth Set	
12 1/4"		9 5/8", 32.3#, H-40		206'	
8 3/4"		7", 20#, K-55		2658'	
6 1/4"		4 1/2", 10.5#, K-55		TOL: 2494' BOL: 5058"	
		2 3/8", 4.7#, J-55		5008'	

V. Well Test Data

<sup>31</sup> Date New Oil	<sup>32</sup> Gas Delivery Date 5/11/2024	<sup>33</sup> Test Date	<sup>34</sup> Test Length 4	<sup>35</sup> Tbg. Pressure SI - 166	<sup>36</sup> Csg. Pressure SI - 167
<sup>37</sup> Choke Size 20/64"	<sup>38</sup> Oil 0	<sup>39</sup> Water 0	<sup>40</sup> Gas 1		<sup>41</sup> Test Method

<sup>42</sup> I hereby certify that the rules of the Oil Conservation Division have been complied with and that the information given above is true and complete to the best of my knowledge and belief. Signature: 	OIL CONSERVATION DIVISION	
Printed name: Amanda Walker	Approved by:	
Title: Operations Regulatory Tech Sr.	Title:	
E-mail Address: <a href="mailto:mwalker@hilcorp.com">mwalker@hilcorp.com</a>	Approval Date:	
Date: 6/13/2024	Phone: 346-237-2177	

Well Name: MORRIS A	Well Location: T30N / R11W / SEC 15 / NESE / 36.80916 / -107.97296	County or Parish/State: SAN JUAN / NM
Well Number: 13A	Type of Well: CONVENTIONAL GAS WELL	Allottee or Tribe Name:
Lease Number: NMSF078138	Unit or CA Name: MORRIS A	Unit or CA Number: NMNM103026, NMNM88351
US Well Number: 3004526586	Operator: HILCORP ENERGY COMPANY	

Subsequent Report

Sundry ID: 2795291

Type of Submission: Subsequent Report

Date Sundry Submitted: 06/13/2024

Date Operation Actually Began: 04/09/2024

Type of Action: Recompletion

Time Sundry Submitted: 12:33

**Actual Procedure:** The following well has been recompleted into the Fruitland Coal and is now producing as a DHC with the existing CH/MV. Please see the attached for the recompletion operations.

SR Attachments

Actual Procedure

MORRIS\_A\_13A\_RC\_Writeup\_20240613123250.pdf

Received by OCD: 6/14/2024 11:16:39 AM

Page 3 of 21

Well Name: MORRIS A	Well Location: T30N / R11W / SEC 15 / NESE / 36.80916 / -107.97296	County or Parish/State: SAN JUAN / NM
Well Number: 13A	Type of Well: CONVENTIONAL GAS WELL	Allottee or Tribe Name:
Lease Number: NMSF078138	Unit or CA Name: MORRIS A	Unit or CA Number: NMNM103026, NMNM88351
US Well Number: 3004526586	Operator: HILCORP ENERGY COMPANY	

Operator

I certify that the foregoing is true and correct. Title 18 U.S.C. Section 1001 and Title 43 U.S.C. Section 1212, make it a crime for any person knowingly and willfully to make to any department or agency of the United States any false, fictitious or fraudulent statements or representations as to any matter within its jurisdiction. Electronic submission of Sundry Notices through this system satisfies regulations requiring a

Operator Electronic Signature: AMANDA WALKER	Signed on: JUN 13, 2024 12:32 PM
Name: HILCORP ENERGY COMPANY	
Title: Operations/Regulatory Technician	
Street Address: 1111 TRAVIS ST	
City: HOUSTON	State: TX
Phone: (346) 237-2177	
Email address: MWALKER@HILCORP.COM	

Field

Representative Name:		
Street Address:		
City:	State:	Zip:
Phone:		
Email address:		

BLM Point of Contact

BLM POC Name: KENNETH G RENNICK	BLM POC Title: Petroleum Engineer
BLM POC Phone: 5055647742	BLM POC Email Address: krennick@blm.gov
Disposition: Accepted	Disposition Date: 06/14/2024
Signature: Kenneth Rennick	



## Well Operations Summary L48

Well Name: MORRIS A #13A

API: 3004526586

Field: BLANCO MESAVERDE (PRORAT #0078

State: NEW MEXICO

Permit to Drill (PTD) #:

Sundry #:

Rig/Service: 105

## Jobs

Actual Start Date: 4/9/2024

End Date: 6/5/2024

Report Number  
1Report Start Date  
4/9/2024Report End Date  
4/9/2024

## Operation

ACCEPT HEC #105 AT 06:00 ON 4/9/2024. CREW TRAVELED TO LOCATION.

MOB FROM THE ATLANTIC C #4A TO MORRIS A #13A (10 MILE MOVE). EXTRA TIME DO TO CONSTRUCTION.

SPOT RIG AND EQUIPMENT. RIG UP RIG AND EQUIPMENT. BDW.

SITP: 55 PSI  
SICP: 55 PSI  
SIBHP: 0 PSI  
BDW: 10 MIN

N/D WH. N/U BOP. R/U RIG FLOOR. FUNCTION TEST AND PRESSURE TEST BOP (GOOD). EXTRA TIME DO TO CORROTED LOCKING PINS.

PULL TUBING HANGER.

R/U PREMIER NDT SCANNING EQUIPMENT. TOH SCANNING 2-3/8" TUBING.

12 - YELLOW  
86 - BLUE  
30 - GREEN  
33 - REDDOWNGRADE DUE TO PITTING. SCALE ON OUTSIDE OF TBG FROM 1500'.  
R/D PREMIER NDT SCANNING EQUIPMENT.

P/U 3-7/8" STRING MILL. TALLY AND TIH WITH 600'. W/O TBG (1HR). SWAP TBG TRAILERS. P/U 7" SCRAPPER. TALLY AND P/U TBG TO TOP OF LINER.

TOH L/D 7" SCRAPPER AND 3 7/8" STRING MILL.

SHUT IN WELL. SECURED LOCATION. DEBRIEFED CREW. SERVICE RIG.  
SDFN.

CREW TRAVELED HOME.

Report Number  
2Report Start Date  
4/10/2024Report End Date  
4/10/2024

## Operation

CREW TRAVELED TO LOCATION (EARLY)

HELD PJSM WITH RIG CREW ON TODAY'S OPERATIONS. BDW.

SITP: 0 PSI  
SICP: 25 PSI  
SIBHP: 0 PSI  
BDW: 5 MIN

P/U HEC 4-1/2" CIBP. TIH W/ ALL TBG IN DERRICK.

SET 4-1/2" CIBP AT 3050'.

LOAD CSG W/ 110BBL WATER. CIRCULATE 20 BBL.

PRESSURE TEST CASING TO 560 PSI. CLIMBED TO 750 PSI IN 30 MIN.

L/D TUBING STRING (166 JTS TOTAL ON FLOAT). L/D SETTING TOOL.

PJSM. N/D BOP. N/D TUBING HEAD. N/U NEW 5K TUBING HEAD. VOID TEST TO 1500 PSI (GOOD). N/U BOP. N/D STRIPPING HEAD. N/U WRLN LUBRICATOR.

R/U WIRELINE GROUP. RIH W/ CBL. PRESSURE CASING TO 500 PSI. POOH LOGGING FROM CIBP (3050'). CBL RAN FROM 0' TO 3050'. RIH W/ CNL. POOH LOGGING FROM 2500' TO 1500'. SEND CBL/CNL TO ENGINEER. R/D WIRELINE GROUP.

SHUT IN WELL. SECURED LOCATION. DEBRIEFED CREW. SERVICE RIG.  
SDFN.

CREW TRAVELED HOME. EXTRA TIME ADDED FOR 05:00 SAFETY MEETING

Report Number  
3Report Start Date  
4/11/2024Report End Date  
4/11/2024

## Operation

CREW TRAVELED TO LOCATION (EARLY)

HELD PJSM WITH RIG CREW. NO PRESSURE ON WELL.

SITP: 0 PSI  
SICP: 0 PSI  
SIBHP: 0 PSI  
BDW: 0 MIN

MIRU WILSON SERVICE. CONDUCT BRADENHEAD TEST AND MIT FROM SURFACE TO 3050'. BOTH TEST WITNESSED AND PASSED BY JOHN DURAM NMOCD.

W/O PERFS DEPTHS FROM ENGINEER AND WIRELINE GROUP TO BUILT PERFS GUNS.

R/U THE WIRELINE GROUP. P/U HEC 7" CBP. RIH. SET CBP AT 2300'. POOH.



Well Operations Summary L48

Well Name: MORRIS A #13A

API: 3004526586	Field: BLANCO MESAVERDE (PRORAT #0078	State: NEW MEXICO
	Sundry #:	Rig/Service: 105

Operation		
RIH AND PERF STAGE #1 (FRUITLAND) INTERVAL WITH 8 SHOTS, 0.42" DIA, 3-1/8" GUN,1 SPF AT 2245'-2249', 2252'-2256'.		
ALL SHOTS FIRED.		
POH.		
RIH. PERF STAGE #1 (FRC) INTERVAL WITH 100 SHOTS, 0.42" DIA, 3-1/8" GUN, SELECT FIRE 4 SPF 90 DEGREE PHASING AT 2191'-2202', 2207'-2221'.		
ALL SHOTS FIRED.		
POOH.		
RIH W/ HEC COMPOSITE 7" FRAC-TRU PLUG. SET PLUG AT 2178' (BALL NOT IN PLACE). POOH. R/D/R WL.		
HOLD PJSM ON HYDRO-TESTING. X/O TO 3 1/2" HANDLING TOOLS. P/U 7" AS1-X PCKR (DRIFT 2.937") AND X-OVER. TEST TO 8000 PSI (GOOD). TALLY AND P/U 3 1/2" FRAC STRING TO 1779.46' (HYDRO TESTING TO 8000 PSI). R/D WILSON SERVICES.		
SET PACKER.		
LAND FRAC STRING AS FOLLOWS.		
TUBING HANGER		
1- 3 1/2"x10' L-80 PUP JT (9.75')		
53 JTS- 3 1/2" 9.3 L-80 EUE YB (1714.02')		
1- 3 1/2"x2' L-80 PUP JT (2.45')		
1 JT- 9.3 L-80 EUE YB (31.66')		
1- 3 1/2"x7" AS1-X PCKR (8.00')		
1- 3 1/2" WIRELINE RE-ENTRY GUIDE (0.58)		
EOT: 1779.64		
TOP OF PCKR: 1770.88'		
PT CSG TO 500 PSI (GOOD).		
LOAD CSG W/ 30 BBL. PT TO 550 PSI (GOOD). PUMP DOWN TBG W/ 90 BBL 2% KCL AT 900 PSI AND 6 BPM. NO COMMUNICATION PAST PACKER.		
SHUT IN WELL. SECURED LOCATION. DEBRIEFED CREW. SDFN.		
CREW TRAVELED HOME.		

Report Number	Report Start Date	Report End Date
4	4/12/2024	4/12/2024

Operation		
CREW TRAVELED TO LOCATION.		
HELD PJSM WITH ALL ON LOCATION ON TODAY'S OPERATIONS. NO PRESSURE ON WELL.		
SITP: VAC		
SICP: 0 PSI		
SIBHP: 0 PSI		
BDW: 0 MIN		
R/D RIG FLOOR. N/D BOP. N/U FRAC STACK. VOID TEST WH TO STACK CONNECTION TO 5000 PSI, (GOOD)		
INSTALL 2 WAY CHECK. PRESSURE TEST FRAC STACK TO 9000 PSI(GOOD).		
R/D RIG AND EQUIPMENT. PREP FOR RIG MOVE. RIG RELEASED TO THE HARTMAN 23 #1M ON 4/12/24 AT 10:00. MOVE OF RIG.		

Report Number	Report Start Date	Report End Date
5	5/7/2024	5/7/2024

Operation		
MOVE IN AND SPOT GORE N2 SERVICES.		
RIG UP FRAC AND N2 EQUIPMENT. COOL DOWN N2 PUMPS.		
PRIME EQUIPMENT. PRESSURE TEST FLUID LINES TO 7800 PSI. GOOD TEST. PRESSURE TEST N2 LINES TO 7800 PSI. GOOD TEST.		
HELD PRE JOB SAFETY MEETING WITH ALL PERSONAL ON LOCATION.		



Well Operations Summary L48

Well Name: MORRIS A #13A

API: 3004526586	Field: BLANCO MESAVERDE (PRORAT #0078	State: NEW MEXICO
	Sundry #:	Rig/Service: 105

Operation

FRUITLAND COAL STIMULATION: (2191' TO 2256')

FRAC AT 50 BPM W/ 70Q FRUITLAND STAGE #1 STIMULATION:

FRAC AT 50 BPM W/ 70 Q N2 FOAM.

TOTAL LOAD: 625 BBLS

TOTAL SLICKWATER: 601 BBLS

TOTAL ACID: 24 BBLS

TOTAL 100 MESH SAND: 7,521 LBS

TOTAL 40/70 SAND: 46,254 LBS

TOTAL N2: 737,000 SCF

AVERAGE RATE: 50 BPM

MAX RATE: 51.6 BPM

AVERAGE PRESSURE: 1,910 PSI

MAX PRESSURE: 2,133 PSI

MAX SAND CONC: 1.25 PPG DOWNHOLE.

ISIP: 1014 PSI

54 7/8" RCN BALLS DROPPED FOR DIVERSION.

DROP 2.25" BALL. GOOD BALL ACTION. PT PLUG TO 1400 PSI (GOOD).

**PERF STAGE #2 (FRC) INTERVAL (2041' - 2164') IN 3 RUNS WITH 236 SHOTS, 0.29" DIA, 2" RTG GUN, SELECT FIRE 4 SPF 90 DEGREE PHASING AT 2041'-2043', 2045'-2051', 2053'-2057', 2059'-2064', 2067'-2074', 2086'-2094', 2116'-2121', 2142'-2164'.**

ALL SHOTS FIRED.

POOH. R/D WRLN LUBRICATOR.

FRUITLAND COAL STIMULATION: (2041' TO 2164')

FRAC AT 50 BPM W/ 70Q N2 FOAM.

TOTAL LOAD: 1,300 BBLS

TOTAL SLICKWATER: 1,276 BBLS

TOTAL ACID: 24 BBLS

TOTAL 100 MESH SAND: 14,496 LBS

TOTAL 40/70 SAND: 105,558 LBS

TOTAL N2: 1,231,000 SCF

AVERAGE RATE: 50.1 BPM

MAX RATE: 52.8 BPM

AVERAGE PRESSURE: 1,980 PSI

MAX PRESSURE: 2,427 PSI

MAX SAND CONC: 1.50 PPG DOWNHOLE.

ISIP: 1094 PSI

DROPPED (154) TTS PERF PODS IN THE MIDDLE OF THE STAGE. PRESSURE RESPONSE SEEN.

SHUT IN WELL. SECURED LOCATION.

RIG DOWN FRAC, N2 AND WIRELINE EQUIPMENT.

Report Number	Report Start Date	Report End Date
6	5/8/2024	5/8/2024

Operation

ACCEPT HEC #105 AT 06:00 ON 5/8/2024. CREW TRAVEL TO LOCATION (EARLY).

HOLD PJSM.

MOB FROM THE BOLIN A #1 TO THE MORRIS A #13A (36 MILE MOVE). EXTRA TIME TAKEN DUE TO ROUGH ROAD CONDITIONS.

SPOT RIG AND EQUIPMENT. RIG UP RIG EQUIPMENT. R/U IDEAL COMPLETIONS PLUG CATCHER. BLEED DOWN WELL. MOVE FRAC TANKS TO CNJ YARD.

SITP: 1000 PSI

SICP: 0 PSI

SIBHP: 0 PSI

BDW: 60 MIN

LUBRICATE IN TWC (HOLDING). N/D FRAC STACK. N/U BOP. R/U RIG FLOOR. CHANGE OVER TO 3-1/2" HANDLING TOOLS. FUNCTION TEST BOP (GOOD).

R/U WELLCHECK. PRESSURE TEST PIPE RAMS AND BLIND RAMS. 250 PSI LOW FOR 5 MINUTES AND 2500 PSI HIGH FOR 10 MINUTES. TEST CHARTED. R/D WELLCHECK.

RELEASE PCKR. PULL HANGER. LUBRICATE OUT TWC (500 PSI ON TBG). PUMP 30 BBL KILL TBG. L/D LUBRICATOR. RELEASE WELL CHECK. WELL UNLOADED 140 BBL UP CASING.

SHUT IN WELL. SECURED LOCATION. DEBRIEFED CREW. SDFN.

CREW TRAVEL HOME.

Report Number	Report Start Date	Report End Date
7	5/9/2024	5/9/2024

Operation

CREW TRAVEL TO LOCATION.



Well Operations Summary L48

Well Name: MORRIS A #13A

API: 3004526586	Field: BLANCO MESAVERDE (PRORAT #0078	State: NEW MEXICO
	Sundry #:	Rig/Service: 105

Operation		
HELD PJSM WITH RIG CREW ON TODAY'S OPERATIONS. R/U HARD LINE TO TBG. BDW. MAKING ~1.3 BBL/MIN WATER.		
SITP: 425 PSI SICP: 450 PSI SIBHP: 0 PSI BDW: 60 MIN		
PUMP 60 BBL KILL (30 TBG AND 30 CSG). TBG STARTED UNLOADING. PUMP 30 BBL KILL DOWN TBG. L/D 3-1/2" FRAC STRING. L/D PCKR. SWAP TUBING FLOATS. SPOT DRILL COLLARS.		
P/U 6-3/4" JUNK MILL, BIT SUB. TALLY AND P/U 6-3-1/8" DC, AND X-OVER. TALLY AND P/U 2-3/8" TUBING. TAG PLUG #1 AT 2178'		
BHA AS FOLLOWS: 6-1/4" BIT BIT SUB (2', 4.31"OD) DC 1 (31.53',3.065 OD) DC 2 (31.30',3.083 OD) DC 3 (31.14',3.145 OD) DC 4 (30.82',3.145 OD) DC 5 (31.14',3.130 OD) DC 6 (31.20',3.108 OD) X-OVER (1.75')		
P/U SWIVEL. R/U SWIVEL.		
KI AIR. UNLOAD WELL. EST CIRC W/ AIR/FOAM UNIT. WITH 1350 CFM & 13 BBL/HR WATER. 1 GAL/HR SOAP & 1 GAL/HR INHIBITOR. <b>DRILL PLUG #1 (CFP) AT 2178'</b> .		
CIRC WELL CLEAN. TALLY AND P/U TBG W/ SWIVEL. TAG FILL AT 2240' (60' FILL).		
EST CIRC W/ AIR/FOAM UNIT. 1600 CFM & 12 BBL/HR WATER. 1 GAL/HR SOAP & 2 GAL/HR INHIBITOR. C/O SAND AND PLUG PARTS F/2240' T/2300'. <b>DRILL PLUG #2 (CBP) AT 2300'</b> .		
CIRC WELL CLEAN. PUMP SWEEPS. TRASH STICKING TBG. WORK TBG FREE. KILL TUBING. L/D 3 JTS. RACK BACK POWER SWIVEL.		
L/D TUBING TO ABOVE TOP PERFS. EOT AT 2015'.		
SHUT IN WELL. SECURED LOCATION. DEBRIEFED CREW. SDFN.		
CREW TRAVEL HOME.		
Report Number 8	Report Start Date 5/10/2024	Report End Date 5/10/2024
Operation		
CREW TRAVEL TO LOCATION.		
HELD PRE JOB SAFETY MEETING. BDW.		
SITP: 0PSI SICP: 300 PSI SIBHP: 0 PSI BDW: 10 MIN		
P/U TBG. TAG FILL ON TOP OF LINER AT 2491' (2' FILL). P/U POWER SWIVEL.		
EST CIRC W/ AIR/FOAM UNIT. 1600 CFM & 12 BBL/HR WATER. 1 GAL/HR SOAP & 2 GAL/HR INHIBITOR. C/O SAND AND PLUG PARTS F/2491' T/2493'. MILL TO TOP OF LINER.		
CIRC WELL CLEAN. PUMP SWEEPS. SAND DOWN TO TRACE PER 5 GAL SAMPLE. KILL TBG. L/D 3JT. RACK BACK POWER SWIVEL.		
TOOH W/ ALL TBG. L/D DRILL COLLARS AND 4-1/4" MILL. L/D POWER SWIVEL.		
P/U PRODUCTION BHA. DRIFT AND TIH WITH TUBING. P/U PUP JTS.		
P/U TUBING HANGER LAND TUBING AS FOLLOWS:  TUBING HANGER 1 - 2-3/8" J-55 YELLOW TUBING (29.7') 2 - 2-3/8" X 10' J-55 PUP JOINT (12.1') 69 - 2-3/8" J-55 YELLOW TUBING (2166.7') 1 - 2-3/8" X 2' J-55 PUP JOINT (2.1') 1 - 2-3/8" J-55 YELLOW TUBING (31.16') 1 - SEAT NIPPLE (1.78" ID) 1 - EXP CHECK  PBTD - 5040' TOL - 2494' EOT - 2256.36' SEAT NIPPLE TOP - 2254.76' KB - 12'		
R/D FLOOR. NIPPLE DOWN BOP. NIPPLE UP NEW WELLHEAD.		
PUMP 3 BBLS WATER W/ 5 GAL INHIBITOR DOWN TUBING. PRESSURE TEST TUBING WITH AIR TO 500 PSI (GOOD). PUMPED OFF EXPENDABLE PLUG AT 950 PSI. UNLOAD AND SHUT IN WELL.		



## Well Operations Summary L48

Well Name: MORRIS A #13A

API: 3004526586

Field: BLANCO MESAVERDE (PRORAT #0078

State: NEW MEXICO

Sundry #:

Rig/Service: 105

## Operation

R/D HEC #105. PREP FOR RIG MOVE. R/D AIR. M/O RIG. RIG RELEASED TO THE ATLANTIC COM B #8A ON 5/10/2024 AT 14:30.

## Operation

Report Number  
10Report Start Date  
6/3/2024Report End Date  
6/3/2024

## Operation

ACCEPT HEC #105 AT 13:00 ON 6/3/2024. MOB FROM THE BEAVER LODGE COM 1 MTO THE MORRIS A #13A (28.5 MILE MOVE).

SPOT RIG AND EQUIPMENT. RIG UP RIG EQUIPMENT.

SITP: 94 PSI  
SICP: 94 PSI  
SIBHP: 0 PSI  
BDW: 15 MIN

N/D TREE. SET TWC IN HANGER. N/U BOP. R/U RIG FLOOR. FUNCTION TEST BOP (GOOD).

R/U WELLCHECK. PRESSURE TEST BLIND RAMS . 250 PSI LOW FOR 5 MINUTES AND 2500 PSI HIGH FOR 10 MINUTES (CHARTED, GOOD). CLOSE PIPE RAMS PRESSURE UP. DID NOT TEST. CHANGE OUT RUBBERS, INSTALL IN BOP. PRESSURE UP FAILED AGAIN. ORDERED REPLACEMENT RAMS FROM HIGH TECH. INSTALL AND TEST 250 LOW 10 MIN, 2500 HIGH 10 MIN (CHARTED, GOOD). BLEED OFF PRESSURE.

UNLOCK HANGER. PULL HANGER. LUBRICATE OUT TWC . LOAD OUT BIG RED

SHUT IN WELL. SECURED LOCATION. DEBRIEFED CREW. SDFN. LEAVE CASING OPEN TO SALES.

CREW TRAVEL HOME.

Report Number  
11Report Start Date  
6/4/2024Report End Date  
6/4/2024

## Operation

CREW TRAVEL TO LOCATION.

CREW TRAVEL TO LOCATION.

CREW TRAVEL TO LOCATION.

HELD PJSM WITH RIG CREW ON TODAY'S OPERATIONS. BDW.

SITP: 40 PSI  
FCP: 40 PSI  
SIBHP: 0 PSI  
BDW: 5 MIN

HELD PJSM WITH RIG CREW ON TODAY'S OPERATIONS. BDW.

SITP: 40 PSI  
FCP: 40 PSI  
SIBHP: 0 PSI  
BDW: 5 MIN

HELD PJSM WITH RIG CREW ON TODAY'S OPERATIONS. BDW.

SITP: 40 PSI  
FCP: 40 PSI  
SIBHP: 0 PSI  
BDW: 5 MIN

TOOH W/ ALL TUBING.

TOOH W/ ALL TUBING.

L/D PRODUCTION BHA. P/U 3-7/8" JUNK MILL. TALLY AND P/U 3-1/8" DRILL COLLARS.

BHA AS FOLLOWS:

3-7/8" JUNK MILL

BIT SUB (1.40', 3.25"OD)

DC 1 (31.53', 3.000 OD)

DC 2 (31.30', 3.110 OD)

DC 3 (31.14', 2.990 OD)


DC 4 (30.82', 3.145 OD)

DC 5 (31.14', 3.100 OD)

DC 6 (31.20', 3.115 OD)

X-OVER (1.75')



<div><div>Hilcorp Energy Company</div><div>Well Operations Summary L48</div></div>		
Well Name: MORRIS A #13A		
API: 3004526586	Field: BLANCO MESAVERDE (PRORAT #0078	State: NEW MEXICO
	Sundry #:	Rig/Service: 105
Operation		
L/D PRODUCTION BHA. P/U NEW 3-7/8" JUNK MILL. TALLY AND P/U 3-1/8" DRILL COLLARS. BHA AS FOLLOWS: 3-7/8" JUNK MILL BIT SUB (1.4', 3.25"OD) DC 1 (31.53',3.000 OD) DC 2 (31.30',3.110 OD) DC 3 (31.14',2.990 OD) DC 4 (30.82',3.145 OD) DC 5 (31.14',3.100 OD) DC 6 (31.20',3.115 OD) X-OVER (1.75')		
TIH W/ ALL TBG.		
TIH W/ ALL TBG.		
TALLY AND P/U 2-3/8" TUBING. TAG FILL ON TOP OF LINER AT 2493' (1' FILL).		
TALLY AND P/U 2-3/8" TUBING. TAG FILL ON TOP CIBP AT 3015' (35' FILL). P/U POWER SWIVEL.		
P/U POWER SWIVEL,R/U SWIVEL.		
KI AIR. UNLOAD WELL. EST CIRC W/ AIR/FOAM UNIT. WITH 1650 CFM & 12 BBL/HR WATER. 1 GAL/SOAP & 1.5 GAL/HR INHIBITOR. C/O PLUG PARTS AND SAND TO 2494' (TOL).		
KI AIR. UNLOAD WELL. EST CIRC W/ AIR/FOAM UNIT. WITH 1650 CFM & 14 BBL/HR WATER. 1 GAL/HR SOAP & 1.5 GAL/HR INHIBITOR. C/O PLUG PARTS TO 3050'. MILL CIBP AT 3050'.		
PUMP SWEEPS. CIRC WELL CLEAN. RACK BACK SWIVEL.		
PUMP SWEEPS. CIRC WELL CLEAN. RACK BACK SWIVEL.		
TALLY AND P/U 2-3/8" TUBING. TAG FILL ON TOP CIBP@ 3015' (35' FILL). P/U POWER SWIVEL.		
KI AIR. UNLOAD WELL. EST CIRC W/ AIR/FOAM UNIT. 1650 CFM & 14 BBL/HR WATER, 1 GAL/SOAP & 1.5 GAL/HR INHIBITOR. C/O PLUG PARTS TO 3050'. <b>MILL CIBP @3050'</b>		
CIRCULATE WELL CLEAN. PUMP SWEEP. RACK BACK SWIVEL.		
TALLY AND P/U 2-3/8" TUBING. TAG FILL ON TOP PBTD@ 5020' (20' FILL). P/U POWER SWIVEL.		
KI AIR. UNLOAD WELL. EST CIRC (.75HR) W/ AIR/FOAM UNIT. 1650 CFM & 14 BBL/HR WATER, 1 GAL/SOAP & 1.5 GAL/HR INHIBITOR. C/O SCALE AND PLUG PARTS TO 5026' (14' FILL), HARD MILLING. CALL ENGINEER. CALL IT GOOD.		
CIRCULATE WELL CLEAN. PUMP SWEEP. RACK BACK SWIVEL.		
TOOH W/ TUBING TO ABOVE TOP OF LINER. EOT AT 2456'.		
SHUT IN WELL. SECURED LOCATION. DEBRIEFED CREW. SDFN. LEAVE CASING OPEN TO SALES.		
CREW TRAVEL HOME.		
Report Number 12	Report Start Date 6/5/2024	Report End Date 6/5/2024
Operation		
CREW TRAVEL TO LOCATION.		
HELD PJSM WITH RIG CREW ON TODAY'S OPERATIONS. BDW.		
SITP: 180 PSI SICP: 180PSI SIBHP: 0 PSI BDW: 30 MIN		
M/U WEATHERFORD 7" RBP. RIH SET AT 150'. LOAD AND TEST TO 500 PSI. POH W / SETTING TOOL		
N/D BOP. N/D TBG HEAD. REMOVE AND TURN 90 DEG. N/U TBG HEAD. TEST CAVITIY TO 1500 PSI (GOOD). N/U BOP F/P AND P/T (GOOD).		
RIH W/ RETIEVING HEAD. LATCH AND RELEASE RBP. LET WELL EQUILIZE. KILL WELL W /80 BBL FRESH WATER. TOOH W/ TBG. L/D WEATHERFORD 7" RBP. CONTINUE TO TOOH W/ ALL TUBING. L/D 3-1/8" DC. L/D 3-7/8" MILL. MILL WORE DOWN.		
P/U PRODUCTION BHA. TIH W/ TBG.		
1- 2-3/8 4.7# J-55 (31.60) 2- 2-3/8 PUP JTS (18.30) 155- 2-3/8 4.7# J-55 (4880.19) 1- 2-3/8 PUP JT J-55 (2.10) 1- 1.78 SN (1.00) 1-2-3/8 PRICE TYPE W/WEEP HOLE (30.47)		
www.peloton.com		
Page 6/7		
Report Printed: 6/12/2024		



Well Operations Summary L48

Well Name: MORRIS A #13A

API: 3004526586	Field: BLANCO MESAVERDE (PRORAT #0078	State: NEW MEXICO
	Sundry #:	Rig/Service: 105

Operation

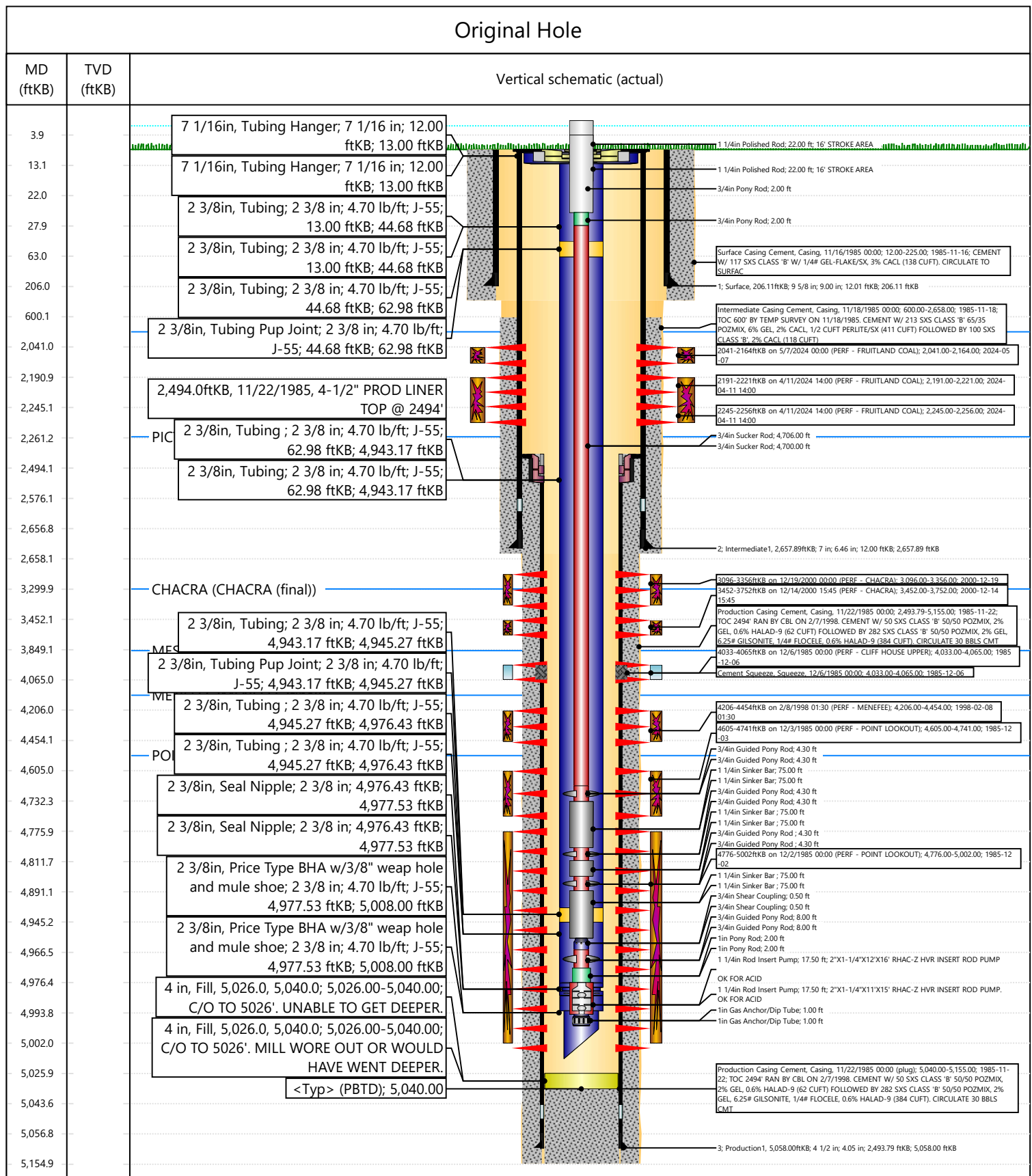
<p>P/U TUBING HANGER. LAND TUBING AS FOLLOWS:</p> <p>TUBING HANGER</p> <p>1 - 2-3/8" J-55 YELLOW TUBING (31.68')</p> <p>2 - 2-3/8" J-55 PUP JOINTS (18.30')</p> <p>155 - 2-3/8" J-55 YELLOW TUBING (4880.19')</p> <p>1 - 2-3/8" J-55 PUP JOINT (2.1')</p> <p>1 - 2-3/8" J-55 YELLOW TUBING (31.16')</p> <p>1 - SEAT NIPPLE (1.78" ID)</p> <p>1 - PRICE TYPE MUD ANCHOR W/ 3/8" WEAP HOLE (30.47')</p> <p>PBTD - 5040'</p> <p>FILL - 5026'</p> <p>EOT - 5008'</p> <p>SEAT NIPPLE TOP - 4976.43'</p> <p>KB - 12'</p>
<p>L/D POWER SWIVEL (VERY TIGHT). R/D FLOOR. N/D BOP. N/U B1. R/U ROD BOP AND PUMPING-T. X/O TO ROD HANDLING TOOLS. SWAP TRAILERS.</p> <p>P/U NEW PUMP. BUCKET TEST (GOOD). P/U ROD STRING AS FOLLOWS:</p> <p>1- 1-1/4"X 22' POLISHED ROD (16' STROKE)</p> <p>1- 2/3" x 2' PONY ROD</p> <p>188 - 3/4" GRADE K/D SUCKER ROD</p> <p>1- 4'X3/4" GUIDED PONY ROD</p> <p>3- 1-1/4" SINKER BAR</p> <p>1- 4'X3/4" GUIDED PONY ROD</p> <p>3- 1-1/4" SINKER BAR</p> <p>1- 4'X3/4" GUIDED PONY ROD</p> <p>3- 1-1/4" SINKER BAR</p> <p>1- 3/4" 21K SHEAR TOOL</p> <p>1- 8'X3/4" GUIDED PONY ROD</p> <p>1- 1" LIFTING SUB</p> <p>1- 2"X1-1/4"X11'X15' RHAC-Z HVR INSERT ROD PUMP (SN HIL 973, OK FOR ACID)</p> <p>R/U STUFFING BOX.</p> <p>SEAT PUMP. SPACE OUT. LOAD TUBING, P-TEST TO 1000 PSI (GOOD). BLEED OFF PRESSURE. LONG STROKE PUMP BACK UP TO 1000 PSI. GOOD.</p> <p>R/D HEC #105. PREP FOR RIG MOVE. R/D AIR. CREW TRAVEL HOME. RIG RELEASED TO THE ZACHRY#50.</p>



## Current Schematic - Version 3

Well Name: MORRIS A #13A

API / UWI 3004526586	Surface Legal Location 015-030N-011W-I	Field Name BLANCO MESAVERDE (PRORAT #0078)	Route 0700	State/Province NEW MEXICO	Well Configuration Type
Ground Elevation (ft) 5,868.00	Original KB/RT Elevation (ft) 5,880.00	Tubing Hanger Elevation (ft)	RKB to GL (ft) 12.00	KB-Casing Flange Distance (ft)	KB-Tubing Hanger Distance (ft)







# NEW MEXICO ENERGY, MINERALS and NATURAL RESOURCES DEPARTMENT

## MECHANICAL INTEGRITY TEST REPORT

(TA OR UIC)

Date of Test 11-APR-2024 Operator HIL CORP API # 30-0 415-26586Property Name MORRIS A Well # 13A Location: Unit 1 Sec 5 Twn 30 Rge 11

Land Type:

State \_\_\_\_\_  
Federal \_\_\_\_\_  
Private \_\_\_\_\_  
Indian \_\_\_\_\_

Well Type:

Water Injection \_\_\_\_\_  
Salt Water Disposal \_\_\_\_\_  
Gas Injection \_\_\_\_\_  
Producing Oil/Gas ✓  
Pressure observation \_\_\_\_\_

Temporarily Abandoned Well (Y/N): \_\_\_\_\_ TA Expires: \_\_\_\_\_

Casing Pres. 540 Tbg. SI Pres. \_\_\_\_\_ Max. Inj. Pres. \_\_\_\_\_  
Bradenhead Pres. 0 Tbg. Inj. Pres. \_\_\_\_\_  
Tubing Pres. N/A  
Int. Casing Pres. N/A

Pressured annulus up to 540 psi. for 30 mins. Test passed/failed

REMARKS: TESTED FROM 3050 TO SURFACE.  
1000 PSI SPRING BY MINUTE CLOCK.  
THE CASING WAS PRESSURED UP TO 540 PSI AND  
PRESSURE HELD FOR THE ENTIRE TEST.

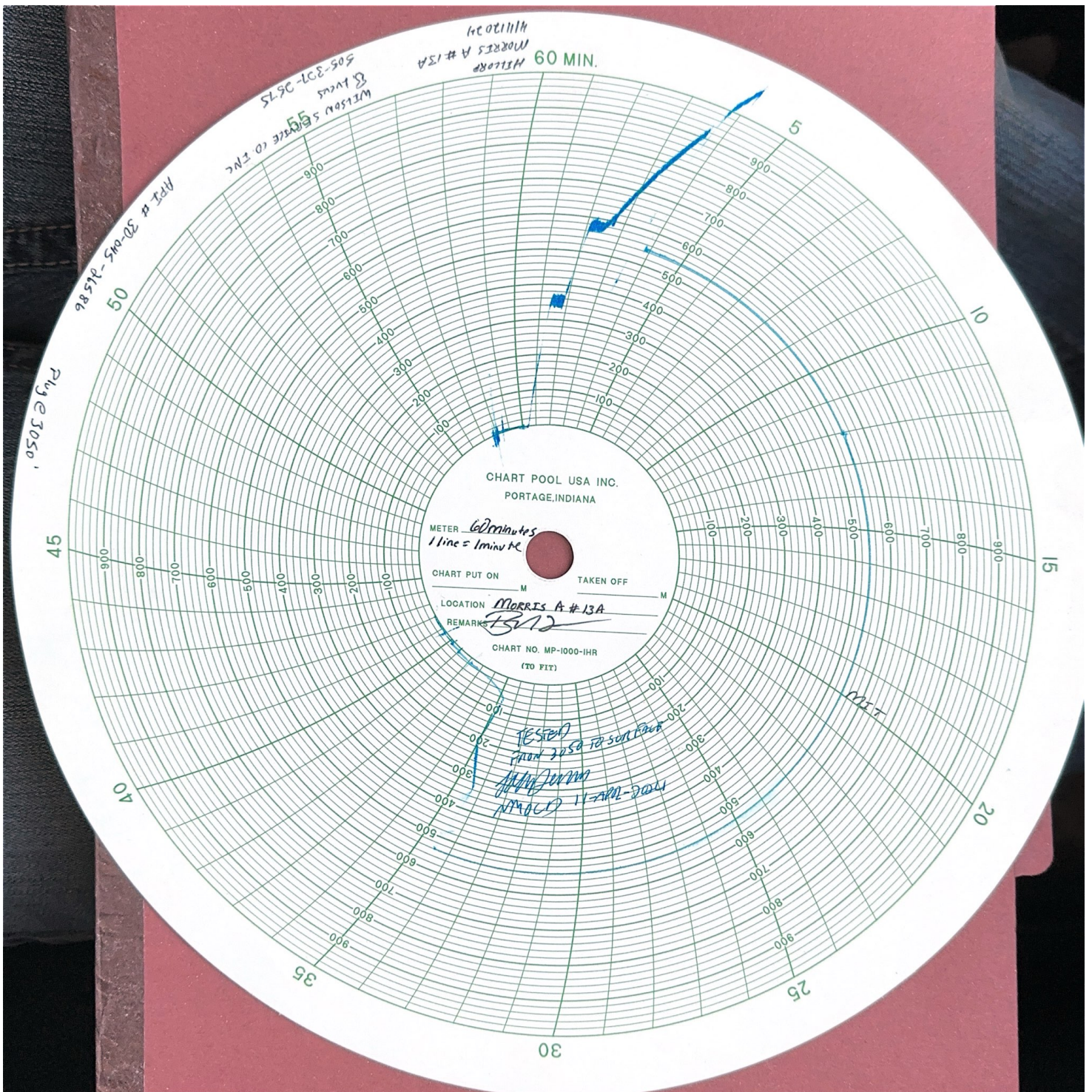
By [Signature]  
(Operator Representative)Witness [Signature]  
(NMOCD)

Supervisor  
(Position)

Revised 02-11-02

Oil Conservation Division \* 1000 Rio Brazos Road \* Aztec, New Mexico 87410  
Phone: (505) 334-6178 \* Fax (505) 334-6170 \* <http://www.emnrd.state.nm.us>









# NEW MEXICO ENERGY, MINERALS & NATURAL RESOURCES DEPARTMENT

OLC CONSERVATION DIVISION  
1200 SOUTH 20TH AVENUE  
ALBUQUERQUE, NEW MEXICO 87102  
AZTEC NM 87105  
(505) 334-6178 FAX: (505) 334-6179  
<http://enrmd.state.nm.us/ocd/division/llm3dstatic.htm>

## BRADENHEAD TEST REPORT

(submit 1 copy to above address)

Date of Test 11-APR-2024 Operator HILCAP API # 30-045-26584

Property Name WILKINS A Well No 1314 Location: Unit 1 Section 15 Township 20 Range 11

Well Status (Shut-In or Producing) Initial PSI: Tubing NA Intermediate NA Casing 0 Bradenhead 0

OPEN BRADENHEAD AND INTERMEDIATE TO ATMOSPHERE INDIVIDUALLY FOR 15 MINUTES EACH

Testing TIME	PRESSURE		INTERM		FLOW CHARACTERISTICS	
	BH	Bradenhead	Int	Csg	BRADENHEAD	INTERMEDIATE
5 min	0	NA	0			
10 min	0		0			
15 min	0		0			
20 min						
25 min						
30 min						

Steady Flow \_\_\_\_\_  
Surges \_\_\_\_\_  
Down to Nothing \_\_\_\_\_  
Nothing X \_\_\_\_\_  
Gas \_\_\_\_\_  
Gas & Water \_\_\_\_\_  
Water \_\_\_\_\_

If bradenhead flowed water, check all of the descriptions that apply below:

CLEAR \_\_\_\_\_ FRESH \_\_\_\_\_ SALTY \_\_\_\_\_ SULFUR \_\_\_\_\_ BLACK \_\_\_\_\_

5 MINUTE SHUT-IN PRESSURE BRADENHEAD 0 INTERMEDIATE NA

REMARKS:

By [Signature]

Witness

[Signature]

Supervisor  
(Position)

E-mail address \_\_\_\_\_

Mandi Walker

---

From: Kuehling, Monica, EMNRD <monica.kuehling@emnrd.nm.gov>  
Sent: Thursday, April 11, 2024 9:30 AM  
To: Rennick, Kenneth G; Trey Misuraca; Kade, Matthew H  
Cc: Farmington Regulatory Techs; John Brown; Austin Harrison; Mandi Walker; Griffin Selby  
Subject: RE: [EXTERNAL] Morris A 13A FRC Recompletion CBL API: 3004526586  
  
Categories: NMOCD

**CAUTION:** External sender. DO NOT open links or attachments from UNKNOWN senders.

NMOCD approves to continue recomplete operations in MV formation through perforations 2040 to 2261- with a prior passing MIT

Thank you

Monica Kuehling  
Compliance Officer Supervisor  
Deputy Oil and Gas Inspector  
New Mexico Oil Conservation Division  
North District  
Office Phone: 505-334-6178 ext. 123  
Cell Phone: 505-320-0243  
Email - monica.kuehling@emnrd.nm.gov

---

From: Rennick, Kenneth G <krennick@blm.gov>  
Sent: Wednesday, April 10, 2024 4:55 PM  
To: Trey Misuraca <Trey.Misuraca@hilcorp.com>; Kuehling, Monica, EMNRD <monica.kuehling@emnrd.nm.gov>; Kade, Matthew H <mkade@blm.gov>  
Cc: Farmington Regulatory Techs <FarmingtonRegulatoryTechs@hilcorp.com>; John Brown <jbrown@hilcorp.com>; Austin Harrison <aharrison@hilcorp.com>; Mandi Walker <mwalker@hilcorp.com>; Griffin Selby <Griffin.Selby@hilcorp.com>  
Subject: Re: [EXTERNAL] Morris A 13A FRC Recompletion CBL API: 3004526586

The BLM finds the proposed perforations appropriate.

Kenneth (Kenny) Rennick

Petroleum Engineer

Bureau of Land Management  
Farmington Field Office

6251 College Blvd  
Farmington, NM 87402

Email: [krennick@blm.gov](mailto:krennick@blm.gov)  
Mobile & Text: 505.497.0019

---

From: Trey Misuraca <[Trey.Misuraca@hilcorp.com](mailto:Trey.Misuraca@hilcorp.com)>  
Sent: Wednesday, April 10, 2024 4:13 PM  
To: [Monica.Kuehling@emnrd.nm.gov](mailto:Monica.Kuehling@emnrd.nm.gov) <[Monica.Kuehling@emnrd.nm.gov](mailto:Monica.Kuehling@emnrd.nm.gov)>; Kade, Matthew H <[mkade@blm.gov](mailto:mkade@blm.gov)>;  
Rennick, Kenneth G <[krennick@blm.gov](mailto:krennick@blm.gov)>  
Cc: Farmington Regulatory Techs <[FarmingtonRegulatoryTechs@hilcorp.com](mailto:FarmingtonRegulatoryTechs@hilcorp.com)>; John Brown <[jbrown@hilcorp.com](mailto:jbrown@hilcorp.com)>;  
Austin Harrison <[aharrison@hilcorp.com](mailto:aharrison@hilcorp.com)>; Mandi Walker <[mwalker@hilcorp.com](mailto:mwalker@hilcorp.com)>; Griffin Selby  
<[Griffin.Selby@hilcorp.com](mailto:Griffin.Selby@hilcorp.com)>  
Subject: [EXTERNAL] Morris A 13A FRC Recompletion CBL API: 3004526586

**This email has been received from outside of DOI - Use caution before clicking on links, opening attachments, or responding.**

Monica, Kenny, Matthew,

Please see attached the CBL run on the Morris A 13A (API: 3004526586) today and the approved NOI. Per this CBL showing adequate cement coverage 150' above and 100' below the NOI interval as stated in the COA's, I would propose to continue forward with perforating the approved NOI interval from 2,040' – 2,261'.

Before moving forward, let me know if you are in agreement with the plan to proceed.

Kind Regards,

Trey Misuraca  
Operations Engineer | San Juan North  
Hilcorp Energy Company | 1111 Travis Street | Houston, TX 77002  
M: 225.610.7136  
[Trey.Misuraca@hilcorp.com](mailto:Trey.Misuraca@hilcorp.com)

---

The information contained in this email message is confidential and may be legally privileged and is intended only for the use of the individual or entity named above. If you are not an intended recipient or if you have received this message in error, you are hereby notified that any dissemination, distribution, or copy of this email is strictly prohibited. If you have received this email in error, please immediately notify us by return email or telephone if the sender's phone number is listed above, then promptly and permanently delete this message.

While all reasonable care has been taken to avoid the transmission of viruses, it is the responsibility of the recipient to ensure that the onward transmission, opening, or use of this message and any attachments will not adversely affect its systems or data. No responsibility is accepted by the company in this regard and the recipient should carry out such virus and other checks as it considers appropriate.

---



UNITED STATES  
DEPARTMENT OF THE INTERIOR  
BUREAU OF LAND MANAGEMENTFORM APPROVED  
OMB No. 1004-0137  
Expires: July 31, 2018

## WELL COMPLETION OR RECOMPLETION REPORT AND LOG

5. Lease Serial No.

**NMSF078138**1a. Type of Well ☐ Oil Well ☒ Gas Well ☐ Dry ☐ Other  
b. Type of Completion: ☐ New Well ☐ Work Over ☐ Deepen ☐ Plug Back ☒ Diff. Resvr.,Other: **Recomplete**

6. If Indian, Allottee or Tribe Name

7. Unit or CA Agreement Name and No.

2. Name of Operator

**Hilcorp Energy Company**

8. Lease Name and Well No.

**Morris A 13A**

3. Address

**382 Road 3100, Aztec, NM 87410**

3a. Phone No. (include area code)

**(505) 599-3400**

9. API Well No.

**30-045-26586**

4. Location of Well (Report location clearly and in accordance with Federal requirements)\*

At surface

**I (NE/SE) 1500' FSL & 1190' FEL**

At top prod. Interval reported below

At total depth

14. Date Spudded  
**11/16/1985**15. Date T.D. Reached  
**11/22/1985**16. Date Completed **5/11/2024**  
☐ D & A ☒ Ready to Prod.17. Elevations (DF, RKB, RT, GL)\*  
**5866' GR**18. Total Depth:  
**5155'**19. Plug Back T.D.:  
**5040'**20. Depth Bridge Plug Set: MD  
TVD21. Type Electric & Other Mechanical Logs Run (Submit copy of each)  
**CBL**22. Was well cored? ☒ No ☐ Yes (Submit analysis)  
Was DST run? ☒ No ☐ Yes (Submit report)  
Directional Survey? ☒ No ☐ Yes (Submit copy)

23. Casing and Liner Record (Report all strings set in well)

Hole Size	Size/Grade	Wt. (#/ft.)	Top (MD)	Bottom (MD)	Stage Cementer Depth	No. of Sk. & Type of Cement	Slurry Vol. (BBL)	Cement top*	Amount Pulled
12 1/4"	9 5/8", H-40	32.3		206'		117 sx			
8 3/4"	7", K-55	20		2658'		313 sx			
6 1/4"	4 1/2", K-55	10.5	2494'	5058'		332 sx			

24. Tubing Record

Size	Depth Set (MD)	Packer Depth (MD)	Size	Depth Set (MD)	Packer Depth (MD)	Size	Depth Set (MD)	Packer Depth (MD)
2 3/8"	5008'							

25. Producing Intervals

Formation	Top	Bottom	Perforated Interval	Size	No. Holes	Perf. Status
A) Fruitland Coal	2041'	2164'	4 SPF	0.29	236	Open
B)	2191'	2221'	4 SPF	0.42	100	Open
C)	2245'	2256'	1 SPF	0.42	8	Open
D)					344 Total	

26. Perforation Record

27. Acid, Fracture, Treatment, Cement Squeeze, etc.

Depth Interval	Amount and Type of Material
Fruitland Coal (2041' - 2164')	FRAC AT 50 BPM W/ 70Q N2 FOAM. TOTAL LOAD: 1,300 BBLs TOTAL SLICKWATER: 1,276 BBLs TOTAL ACID: 24 BBLs TOTAL 100 MESH SAND: 14,496 LBS TOTAL 40/70 SAND: 105,558 LBS TOTAL N2: 1,231,000 SCF
Fruitland Coal (2191' - 2256')	FRAC AT 50 BPM W/ 70Q FRAC AT 50 BPM W/ 70 Q N2 FOAM. TOTAL LOAD: 625 BBLs TOTAL SLICKWATER: 601 BBLs TOTAL ACID: 24 BBLs TOTAL 100 MESH SAND: 7,521 LBS TOTAL 40/70 SAND: 46,254 LBS TOTAL N2: 737,000 SCF

28. Production - Interval A

Date First Produced	Test Date	Hours Tested	Test Production	Oil BBL	Gas MCF	Water BBL	Oil Gravity Corr. API	Gas Gravity	Production Method
Standalone Rate 5/11/2024		4	➡	0	1	0			Flowing
Choke Size	Tbg. Press. Flwg.	Csg. Press.	24 Hr. Rate	Oil BBL	Gas MCF	Water BBL	Gas/Oil Ratio	Well Status	
20/64"	SI - 166	SI - 167	➡	0	6	0			Producing

28a. Production - Interval B

Date First Produced	Test Date	Hours Tested	Test Production	Oil BBL	Gas MCF	Water BBL	Oil Gravity Corr. API	Gas Gravity	Production Method
Commingled Rate 6/7/2024			➡	0	248	0			
Choke Size	Tbg. Press. Flwg.	Csg. Press.	24 Hr. Rate	Oil BBL	Gas MCF	Water BBL	Gas/Oil Ratio	Well Status	
SI			➡	0	248	0			

\*(See instructions and spaces for additional data on page 2)

28b. Production - Interval C

Date First Produced	Test Date	Hours Tested	Test Production	Oil BBL	Gas MCF	Water BBL	Oil Gravity Corr. API	Gas Gravity	Production Method
Choke Size	Tbg. Press. Flwg. SI	Csg. Press.	24 Hr. Rate	Oil BBL	Gas MCF	Water BBL	Gas/Oil Ratio	Well Status	

28c. Production - Interval D

Date First Produced	Test Date	Hours Tested	Test Production	Oil BBL	Gas MCF	Water BBL	Oil Gravity Corr. API	Gas Gravity	Production Method
Choke Size	Tbg. Press. Flwg. SI	Csg. Press.	24 Hr. Rate	Oil BBL	Gas MCF	Water BBL	Gas/Oil Ratio	Well Status	

29. Disposition of Gas (Sold, used for fuel, vented, etc.)

SOLD

30. Summary of Porous Zones (Include Aquifers):

Show all important zones of porosity and contents thereof: Cored intervals and all drill-stem test, including depth interval tested, cushion used, time tool open, flowing and shut-in pressures and recoveries.

31. Formation (Log) Markers

Formation	Top	Bottom	Descriptions, Contents, etc.	Name	Top
					Meas. Depth
Ojo Alamo	882'	1002'	White, cr-gr ss	Ojo Alamo	882'
Kirtland	1002'	1958'	Gry sh interbedded w/tight, gry, fine-gr ss.	Kirtland	1002'
Fruitland	1958'	2261'	Dk gry-gry carb sh, coal, grn silts, light-med gry, tight, fine gr ss.	Fruitland	1958'
Pictured Cliffs	2261'	3300'	Bn-Gry, fine grn, tight ss.	Pictured Cliffs	2261'
Chacra	3300'	4102'	Gry fn grn silty, glauconitic sd stone w/ drk gry shale	Chacra	3300'
Menefee	4102'	4600'	Med-dark gry, fine gr ss, carb sh & coal	Menefee	4102'
Point Lookout	4600'	'	Med-light gry, very fine gr ss w/ frequent sh breaks in lower part of formation	Point Lookout	4600'
Mancos	'	'	Dark gry carb sh.	Mancos	'
Gallup	'	'	Lt. gry to brn calc carb micac gluac silts & very fine gry gry ss w/ irreg. interbed sh.	Gallup	'
Greenhorn	'	'	Highly calc gry sh w/ thin lmst.	Greenhorn	'
Graneros	'	'	Dk gry shale, fossil & carb w/ pyrite incl.	Graneros	'
Dakota	'		Lt to dark gry foss carb sl calc sl sitty ss w/ pyrite incl thin sh bands cly Y shale breaks	Dakota	'
Morrison			Interbed grn, brn & red waxy sh & fine to coard grn ss	Morrison	'

32. Additional remarks (include plugging procedure):

This well is now producing as a FC/CH/MV Commingle under DHC 5381  
FC CA# NMNM 085782

33. Indicate which items have been attached by placing a check in the appropriate boxes:

- ☒ Electrical/Mechanical Logs (1 full set req'd.)
- ☐ Geologic Report
- ☐ DST Report
- ☐ Directional Survey
- ☐ Sundry Notice for plugging and cement verification
- ☐ Core Analysis
- ☐ Other:

34. I hereby certify that the foregoing and attached information is complete and correct as determined from all available records (see attached instructions)\*


Name (please print)

Amanda Walker

Title

Operations/Regulatory Technician - Sr.

Signature



Date

6/13/2024

**From:** Rennick, Kenneth G <krennick@blm.gov>  
**Sent:** Friday, June 14, 2024 9:57 AM  
**To:** Cheryl Weston <cweston@hilcorp.com>  
**Subject:** [EXTERNAL] BLM Farmington NM -- WCR ID 92025 Morris A 13 A 3004526586 Accepted for the Record

**CAUTION:** External sender. DO NOT open links or attachments from UNKNOWN senders.

The reference completion report was accepted for the record. See below.

WCR ID	APD ID	Operator	Well Name	Well Numb.	US Well Nu.	Date Accepted
					3004526586	<div>From: mm/dd/yyyy</div> <div>To: mm/dd/yyyy</div>
92025	96AIR4443BFEF	HILCORP ENERGY COMPANY	MORRIS A	13A	3004526586	2024-06-14 12:19

Kenneth (Kenny) Rennick  
  
Petroleum Engineer  
  
Bureau of Land Management  
Farmington Field Office  
6251 College Blvd  
Farmington, NM 87402  
  
Email: krennick@blm.gov  
Mobile & Text: 505.497.0019

**District I**  
1625 N. French Dr., Hobbs, NM 88240  
Phone:(575) 393-6161 Fax:(575) 393-0720  
**District II**  
811 S. First St., Artesia, NM 88210  
Phone:(575) 748-1283 Fax:(575) 748-9720  
**District III**  
1000 Rio Brazos Rd., Aztec, NM 87410  
Phone:(505) 334-6178 Fax:(505) 334-6170  
**District IV**  
1220 S. St Francis Dr., Santa Fe, NM 87505  
Phone:(505) 476-3470 Fax:(505) 476-3462

**State of New Mexico**  
**Energy, Minerals and Natural Resources**  
**Oil Conservation Division**  
**1220 S. St Francis Dr.**  
**Santa Fe, NM 87505**

ACKNOWLEDGMENTS  
  
Action 354268

ACKNOWLEDGMENTS

Operator: HILCORP ENERGY COMPANY 1111 Travis Street Houston, TX 77002	OGRID: 372171
	Action Number: 354268
	Action Type: [C-104] Completion Packet (C-104C)

ACKNOWLEDGMENTS

<input checked="" type="checkbox"/>	I hereby certify that the required Water Use Report has been, or will be, submitted for this wells completion.
<input checked="" type="checkbox"/>	I hereby certify that the required FracFocus disclosure has been, or will be, submitted for this wells completion.

**District I**  
1625 N. French Dr., Hobbs, NM 88240  
Phone:(575) 393-6161 Fax:(575) 393-0720  
**District II**  
811 S. First St., Artesia, NM 88210  
Phone:(575) 748-1283 Fax:(575) 748-9720  
**District III**  
1000 Rio Brazos Rd., Aztec, NM 87410  
Phone:(505) 334-6178 Fax:(505) 334-6170  
**District IV**  
1220 S. St Francis Dr., Santa Fe, NM 87505  
Phone:(505) 476-3470 Fax:(505) 476-3462

**State of New Mexico**  
**Energy, Minerals and Natural Resources**  
**Oil Conservation Division**  
**1220 S. St Francis Dr.**  
**Santa Fe, NM 87505**

CONDITIONS  
  
Action 354268

CONDITIONS

Operator: HILCORP ENERGY COMPANY 1111 Travis Street Houston, TX 77002	OGRID: 372171
	Action Number: 354268
	Action Type: [C-104] Completion Packet (C-104C)

CONDITIONS

Created By	Condition	Condition Date
smcgrath	None	6/21/2024