

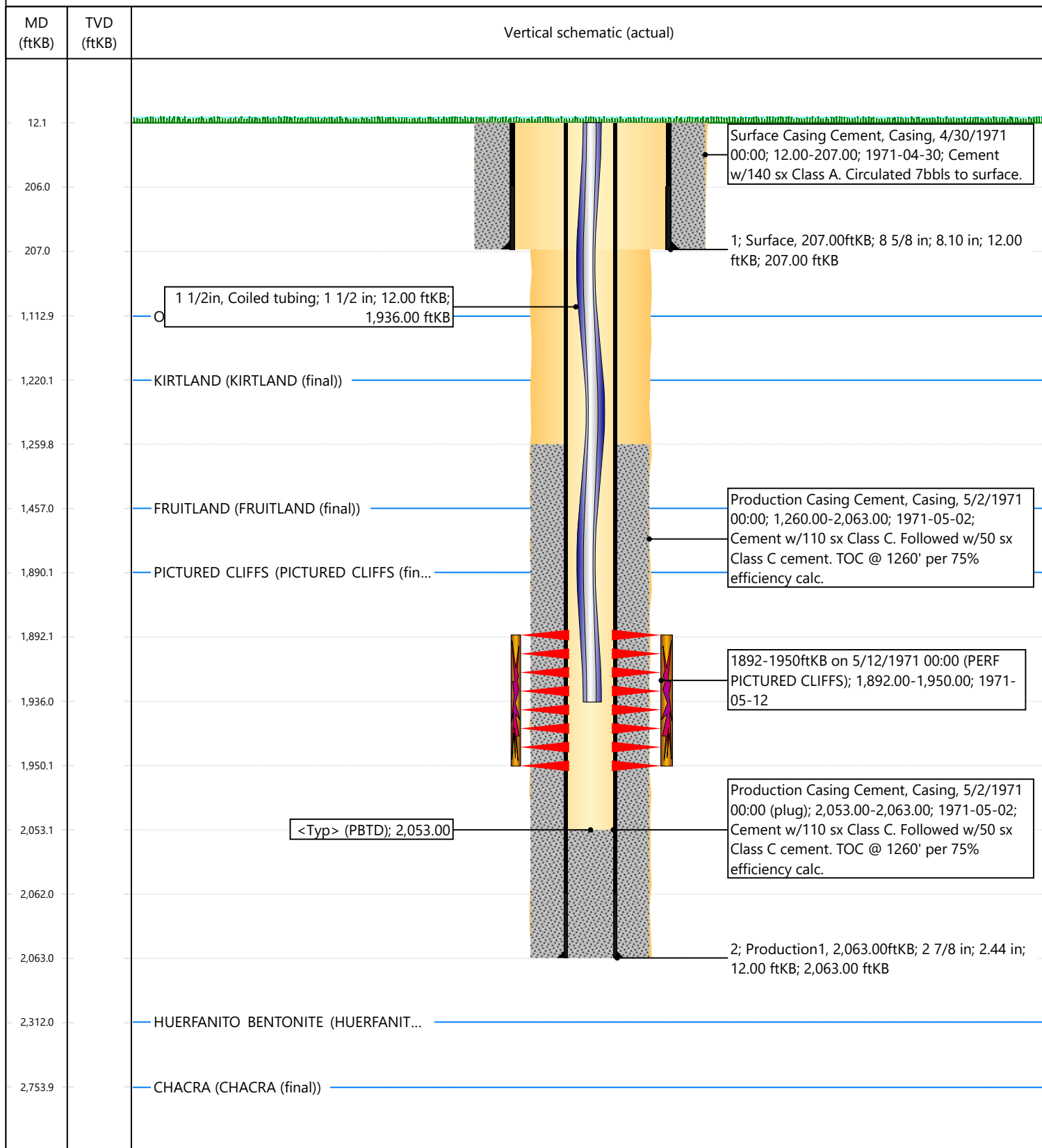


### Current Schematic - Version 3

Well Name: **KAH DES PAH #1R**

API / UWI 3004520763	Surface Legal Location 018-026N-008W-L	Field Name BALLARD PC (GAS #0060)	Route 0908	State/Province NEW MEXICO	Well Configuration Type
Ground Elevation (ft) 6,183.00	Original KB/RT Elevation (ft) 6,195.00	Tubing Hanger Elevation (ft)	RKB to GL (ft) 12.00	KB-Casing Flange Distance (ft)	KB-Tubing Hanger Distance (ft)

### Original Hole



**District I**  
 1625 N. French Dr., Hobbs, NM 88240  
 Phone:(575) 393-6161 Fax:(575) 393-0720

**District II**  
 811 S. First St., Artesia, NM 88210  
 Phone:(575) 748-1283 Fax:(575) 748-9720

**District III**  
 1000 Rio Brazos Rd., Aztec, NM 87410  
 Phone:(505) 334-6178 Fax:(505) 334-6170

**District IV**  
 1220 S. St Francis Dr., Santa Fe, NM 87505  
 Phone:(505) 476-3470 Fax:(505) 476-3462

**State of New Mexico**  
**Energy, Minerals and Natural Resources**  
**Oil Conservation Division**  
**1220 S. St Francis Dr.**  
**Santa Fe, NM 87505**

CONDITIONS

Action 355238

**CONDITIONS**

Operator: HILCORP ENERGY COMPANY 1111 Travis Street Houston, TX 77002	OGRID: 372171
	Action Number: 355238
	Action Type: [UF-WBS] Wellbore Schematic (WELLBORE SCHEMATICS)

**CONDITIONS**

Created By	Condition	Condition Date
mkuehling	None	7/5/2024