

Well Name: MCMANUS	Well Location: T25N / R8W / SEC 4 / NENE / 36.433701 / -107.68071	County or Parish/State: SAN JUAN / NM
Well Number: 10	Type of Well: CONVENTIONAL GAS WELL	Allottee or Tribe Name:
Lease Number: NMNM04226	Unit or CA Name:	Unit or CA Number:
US Well Number: 3004505564	Operator: HILCORP ENERGY COMPANY	

Subsequent Report

Sundry ID: 2795590

Type of Submission: Subsequent Report

Date Sundry Submitted: 06/17/2024

Date Operation Actually Began: 06/11/2024

Type of Action: Plug and Abandonment

Time Sundry Submitted: 09:10

Actual Procedure: Hilcorp Energy Company plugged and abandoned the subject well on 6/14/2024 per the attached report.

SR Attachments

- Actual Procedure
- hilcorp\_mcmanus\_10\_cbl\_20240617090951.pdf
  - McManus\_10\_SR\_20240617090941.pdf

Received by OCD: 6/17/2024 9:51:32 AM

Page 2 of 11

Well Name: MCMIANUS	Well Location: T25N / R8W / SEC 4 / NENE / 36.433701 / -107.68071	County or Parish/State: SAN JUAN / NM
Well Number: 10	Type of Well: CONVENTIONAL GAS WELL	Allottee or Tribe Name:
Lease Number: NMNM04226	Unit or CA Name:	Unit or CA Number:
US Well Number: 3004505564	Operator: HILCORP ENERGY COMPANY	

Operator

I certify that the foregoing is true and correct. Title 18 U.S.C. Section 1001 and Title 43 U.S.C. Section 1212, make it a crime for any person knowingly and willfully to make to any department or agency of the United States any false, fictitious or fraudulent statements or representations as to any matter within its jurisdiction. Electronic submission of Sundry Notices through this system satisfies regulations requiring a

Operator Electronic Signature: TAMMY JONES	Signed on: JUN 17, 2024 09:10 AM
Name: HILCORP ENERGY COMPANY	
Title: Regulatory Compliance Specialist	
Street Address: 382 ROAD 3100	
City: AZTEC	State: NM
Phone: (505) 324-5185	
Email address: TAJONES@HILCORP.COM	

Field

Representative Name:		
Street Address:		
City:	State:	Zip:
Phone:		
Email address:		

BLM Point of Contact

BLM POC Name: MATTHEW H KADE	BLM POC Title: Petroleum Engineer
BLM POC Phone: 5055647736	BLM POC Email Address: MKADE@BLM.GOV
Disposition: Accepted	Disposition Date: 06/17/2024
Signature: Matthew Kade	

MCMANUS 10

30.045.05564

PLUG AND ABANDONMENT

**6/11/2024** – MIRU. CHECK PSI ON WELL SITP 0#, SICP 36#, SIICP 0#, BH 0#, BDW 5 MINS. XO HANDLING TOOLS & PIPE RAMS TO 1.66" TBG. ND WH, NU BOP, PRESSURE TEST & FUNCTION TEST BOP & RU RIG FLOOR. RU WIRELINE, MU 2.44" CIRC & RIH TO 2320'. SET CIRC @ 2320'. POOH R/D WIRELINE. MU STINGER. PU 71 JTS OF 1.66" TBG TO 2320'. TALLEY, STRAP & RABBIT TBG. WAIT ON WASH UP TANK & FRAC TANK FROM OLD LOCATION BEFORE PUMPING CMT PLUG UNDERNEATH CIRC. STING INTO CIRC @ 2320. INJECT RATE @ 1.2 BBLS/MIN W/79 PSI. PUMP 6 BBLS TOTAL. **PUMP CEMENT PLUG #1A (PC PERFS)** 3 SXS 0.5 BBLS, 1.15 Y, 15.8# & 5 GAL/SX. TOC @ 2230', BOC @ 2411'. DISPLACE TO CIRC & STING OUT. HAD TO CIRC WELL DUE STILL HOLDING PRESSURE AFTER STING OUT. LD 1 JT & TOO H 35 STDS OF 1.66" TBG. RU WIRELINE, MU 2.44" CIBP & TRYED RIH TO 2311'. TAGGED @ 2305' W/CIBP. **(BLM & NMOCD APPROVE TO SET CIBP @ 2305')** SET CIBP @ 2305'. TOP-OFF WELL W/FW TO RUN CBL. POOH. RUN CBL FROM 2305' TO SURFACE. R/D WIRELINE. SISW, DEBRIEF CREW & SDFN. **(BLM REP CASEY ARNETT ON LOCATION)**

**6/12/2024** – CHECK PSI ON WELL SITP 0#, SICP 0#, SIICP 0#, BH 0#, BDW 0 MINS. TIH 35 STDS OF 1.66" TBG & 1 JT TO 2305'. **PUMP CEMENT PLUG #1B (PC PERFS, PC & FRD TOPS)** 14 SXS 2.7 BBLS, 1.15 Y, 15.8# & 5 GAL/SX. TOC @ 1837', BOC @ 2305'. LD 15 JTS & R/O 10 BBLS. TOO H 10 STDS & WOC PLUG #1B. TIH & TAG PLUG @ 1881'. LD 7 JTS. LW 2 BBLS & PUMP 5 BBLS. PT TO 620 PSI & FAILED. LOST 15 PSI IN 15 MINS. TOO H 26 STDS OF 1.66" TBG. RU WIRELINE, RIH & PERF SQUEEZES HOLES @ 1747'. POOH & RD WIRELINE. LW W/2 BBLS. DID INJECTION RATE BUT PRESSURE UP TO 970 PSI. **(NMOCD & BLM APPROVE TO SET INSIDE PLUG)** TIH 26 STDS & 3 JTS TO 1797'. 50' PASS THE PERFS @ 1747'. **PUMP CEMENT PLUG #2 (KRD & OJO TOPS)** 17 SXS 3.3 BBLS, 1.15 Y, 15.8# & 5 GAL/SX. TOC @ 1227', BOC @ 1797'. LD 19 JTS. TOO H 18 STDS OF 1.66" TBG & WOC. TIH & TAG PLUG #2 @ 1290'. LD 40 JTS OF 1.66" TBG ONTO TRAILER. RU WIRELINE, RIH & PERF SQUEEZES HOLES @ 154'. POOH & RD WIRELINE. LW W/12 BBLS & PUMP 25 BBLS. GETTING GOOD CIRC DOWN CASING & OUT BH @ 2.3 BBLS/MIN W/68 PSI. SISW, DEBRIEF CREW & SDFN. **(BLM REP CASEY ARNETT ON LOCATION)**

**6/13/2024** – CHECK PSI ON WELL SITP 0#, SICP 0#, SIICP 0#, BH 0#, BDW 0 MINS. **PUMP CEMENT PLUG #3 (SURFACE)** 51 SXS 10.4 BBLS, 1.15 Y, 15.8# & 5 GAL/SX. TOC @ 0', BOC @ 154'. TOTAL OF 5 SXS INSIDE 2-7/8" CASING & 46 SXS INSIDE 8-5/8" X 5.5" ANNULUS. WASH OUT BOP OF CEMENT & WOC #3 PLUG. RD RIG FLOOR. ND BOP, NU WH & PREP TO CUT OFF WH. RIG DOWN RIG AND EQUIPMENT. SISW, DEBRIEF CREW & SDFN. **(BLM REP CASEY ARNETT ON LOCATION)**

**6/14/2024** – CHECK PSI ON WELL SITP 0#, SICP 0#, SIICP 0#, BH 0#, BDW 0 MINS. WAIT ON SECOND DOZER TO PULL OUT RIG. HAD TO TIE BOTH DOZERS TO GET RIG UNSTUCK & BACK ON THE ROAD. START MOVING EQUIPMENT OFF LOCATION. DOZER HAD TO PULL ALL RIG UP TRUCKS IN & OUT OF LOCATION. CUT OFF WH. (TOC IN 2-7/8" CAS. 17', 5.5" INTER CAS 11' & 8-5/8" SURFACE CAS. 10') WELD ON P&A MARKER. FILL CASING AND CELLAR WITH 26 SXS OF CEMENT. RD CEMENT EQUIPMENT MOVE OFF LOCATION. **(RIG RELEASED @ 9:00 AM 6/14/24)**

**(BLM REP CASEY ARNETT ON LOCATION)**

**WELL WAS PLUGGED AND ABANDONED ON 06/14/2024.**

**Tammy Jones**

---

**From:** Kuehling, Monica, EMNRD <monica.kuehling@emnrd.nm.gov>  
**Sent:** Thursday, June 13, 2024 6:47 AM  
**To:** Rennick, Kenneth G; John LaMond; Kade, Matthew H  
**Cc:** Farmington Regulatory Techs; Brice Clyde - (C); Clay Padgett; Lee Murphy; Rustin Mikeska  
**Subject:** RE: [EXTERNAL] P&A Revision Request for Hilcorp's MCMANUS 10 (API # 3004505564)

**CAUTION:** External sender. DO NOT open links or attachments from UNKNOWN senders.

NMOCD approved verbally

Thank you

Monica Kuehling  
Compliance Officer Supervisor  
Deputy Oil and Gas Inspector  
New Mexico Oil Conservation Division  
North District  
Office Phone: 505-334-6178 ext. 123  
Cell Phone: 505-320-0243  
Email - [monica.kuehling@emnrd.nm.gov](mailto:monica.kuehling@emnrd.nm.gov)

---

**From:** Rennick, Kenneth G <krennick@blm.gov>  
**Sent:** Wednesday, June 12, 2024 4:12 PM  
**To:** John LaMond <jlamond@hilcorp.com>; Kuehling, Monica, EMNRD <monica.kuehling@emnrd.nm.gov>; Kade, Matthew H <mkade@blm.gov>  
**Cc:** Farmington Regulatory Techs <FarmingtonRegulatoryTechs@hilcorp.com>; Brice Clyde - (C) <Brice.Clyde@hilcorp.com>; Clay Padgett <cpadgett@hilcorp.com>; Lee Murphy <lmurphy@hilcorp.com>; Rustin Mikeska <rmikeska@hilcorp.com>  
**Subject:** Re: [EXTERNAL] P&A Revision Request for Hilcorp's MCMANUS 10 (API # 3004505564)

To confirm the BLM finds the procedure appropriate.

Kenneth (Kenny) Rennick

Petroleum Engineer

Bureau of Land Management  
Farmington Field Office  
6251 College Blvd  
Farmington, NM 87402

Email: [krennick@blm.gov](mailto:krennick@blm.gov)  
Mobile & Text: 505.497.0019

**From:** John LaMond <[jlamond@hilcorp.com](mailto:jlamond@hilcorp.com)>

**Sent:** Wednesday, June 12, 2024 4:05 PM

**To:** Kuehling, Monica, EMNRD <[monica.kuehling@emnrd.nm.gov](mailto:monica.kuehling@emnrd.nm.gov)>; Rennick, Kenneth G <[krennick@blm.gov](mailto:krennick@blm.gov)>; Kade, Matthew H <[mkade@blm.gov](mailto:mkade@blm.gov)>

**Cc:** Farmington Regulatory Techs <[FarmingtonRegulatoryTechs@hilcorp.com](mailto:FarmingtonRegulatoryTechs@hilcorp.com)>; Brice Clyde - (C) <[Brice.Clyde@hilcorp.com](mailto:Brice.Clyde@hilcorp.com)>; Clay Padgett <[cpadgett@hilcorp.com](mailto:cpadgett@hilcorp.com)>; Lee Murphy <[lmurphy@hilcorp.com](mailto:lmurphy@hilcorp.com)>; Rustin Mikeska <[rmikeska@hilcorp.com](mailto:rmikeska@hilcorp.com)>; John LaMond <[jlamond@hilcorp.com](mailto:jlamond@hilcorp.com)>

**Subject:** RE: [EXTERNAL] P&A Revision Request for Hilcorp's MCMANUS 10 (API # 3004505564)

Good afternoon,

Today we successfully pumped Plug #1b, WOC, and tagged Plug #1b. We then proceeded to perforate @ ~1,747 per the approved revision below (~50' below the KRD top). We then attempted to establish injection but were unsuccessful. The well pressured up to 970 psi with no injection rate.

Hilcorp received verbal approval from the NMOCD and BLM to forego pumping the outside plug, and just pump the inside plug for the KRD & OJO, with an estimated BOC @ 1,797' (50' below the perfs @ 1,747') and an estimated TOC @ 1,327'.

Please let me know if you have any questions.

Thanks,

**John LaMond**

Operations Engineer – Technical Services

Hilcorp Energy Company

1111 Travis

Houston, TX 77002

346-237-2210 (Office)

832-754-9692 (Cell)

[jlamond@hilcorp.com](mailto:jlamond@hilcorp.com)

---

**From:** Kuehling, Monica, EMNRD <[monica.kuehling@emnrd.nm.gov](mailto:monica.kuehling@emnrd.nm.gov)>

**Sent:** Wednesday, June 12, 2024 7:43 AM

**To:** Rennick, Kenneth G <[krennick@blm.gov](mailto:krennick@blm.gov)>; John LaMond <[jlamond@hilcorp.com](mailto:jlamond@hilcorp.com)>; Kade, Matthew H <[mkade@blm.gov](mailto:mkade@blm.gov)>

**Cc:** Farmington Regulatory Techs <[FarmingtonRegulatoryTechs@hilcorp.com](mailto:FarmingtonRegulatoryTechs@hilcorp.com)>; Brice Clyde - (C) <[Brice.Clyde@hilcorp.com](mailto:Brice.Clyde@hilcorp.com)>; Clay Padgett <[cpadgett@hilcorp.com](mailto:cpadgett@hilcorp.com)>; Lee Murphy <[lmurphy@hilcorp.com](mailto:lmurphy@hilcorp.com)>; Rustin Mikeska <[rmikeska@hilcorp.com](mailto:rmikeska@hilcorp.com)>; John LaMond <[jlamond@hilcorp.com](mailto:jlamond@hilcorp.com)>

**Subject:** RE: [EXTERNAL] P&A Revision Request for Hilcorp's MCMANUS 10 (API # 3004505564)

**CAUTION:** External sender. DO NOT open links or attachments from UNKNOWN senders.

NMOCD approved verbally 6/11/2024

Thank you

Monica Kuehling

Compliance Officer Supervisor

Deputy Oil and Gas Inspector

New Mexico Oil Conservation Division

North District

Office Phone: 505-334-6178 ext. 123

Cell Phone: 505-320-0243

Email - [monica.kuehling@emnrd.nm.gov](mailto:monica.kuehling@emnrd.nm.gov)

---

**From:** Rennick, Kenneth G <[krennick@blm.gov](mailto:krennick@blm.gov)>

**Sent:** Wednesday, June 12, 2024 6:07 AM

**To:** John LaMond <[jlamond@hilcorp.com](mailto:jlamond@hilcorp.com)>; Kuehling, Monica, EMNRD <[monica.kuehling@emnrd.nm.gov](mailto:monica.kuehling@emnrd.nm.gov)>; Kade, Matthew H <[mkade@blm.gov](mailto:mkade@blm.gov)>

**Cc:** Farmington Regulatory Techs <[FarmingtonRegulatoryTechs@hilcorp.com](mailto:FarmingtonRegulatoryTechs@hilcorp.com)>; Brice Clyde - (C) <[Brice.Clyde@hilcorp.com](mailto:Brice.Clyde@hilcorp.com)>; Clay Padgett <[cpadgett@hilcorp.com](mailto:cpadgett@hilcorp.com)>; Lee Murphy <[lmurphy@hilcorp.com](mailto:lmurphy@hilcorp.com)>; Rustin Mikeska <[rmikeska@hilcorp.com](mailto:rmikeska@hilcorp.com)>; John LaMond <[jlamond@hilcorp.com](mailto:jlamond@hilcorp.com)>

**Subject:** Re: [EXTERNAL] P&A Revision Request for Hilcorp's MCMANUS 10 (API # 3004505564)

To confirm, the BLM finds the procedure appropriate.

Get [Outlook for iOS](#)

---

**From:** John LaMond <[jlamond@hilcorp.com](mailto:jlamond@hilcorp.com)>

**Sent:** Tuesday, June 11, 2024 9:48:41 PM

**To:** Kuehling, Monica, EMNRD <[monica.kuehling@emnrd.nm.gov](mailto:monica.kuehling@emnrd.nm.gov)>; Rennick, Kenneth G <[krennick@blm.gov](mailto:krennick@blm.gov)>; Kade, Matthew H <[mkade@blm.gov](mailto:mkade@blm.gov)>

**Cc:** Farmington Regulatory Techs <[FarmingtonRegulatoryTechs@hilcorp.com](mailto:FarmingtonRegulatoryTechs@hilcorp.com)>; Brice Clyde - (C) <[Brice.Clyde@hilcorp.com](mailto:Brice.Clyde@hilcorp.com)>; Clay Padgett <[cpadgett@hilcorp.com](mailto:cpadgett@hilcorp.com)>; Lee Murphy <[lmurphy@hilcorp.com](mailto:lmurphy@hilcorp.com)>; Rustin Mikeska <[rmikeska@hilcorp.com](mailto:rmikeska@hilcorp.com)>; John LaMond <[jlamond@hilcorp.com](mailto:jlamond@hilcorp.com)>

**Subject:** RE: [EXTERNAL] P&A Revision Request for Hilcorp's MCMANUS 10 (API # 3004505564)

Good evening Kenny and Monica,

Per our conversation, we successfully set the 2-7/8" CICR @ 2,320' and pumped Plug #1a. We then attempted to set the 2-7/8" CIBP @ 2,311' but tagged at 2,305'. Hilcorp then received verbal approval from the NMOCD and BLM to set the CIBP @ 2,305'.

Attached is the CBL run this afternoon (6/11/2024) on the MCMANUS 10. It shows TOC inside the 2-7/8" x 5-1/2" casing annulus @ ~52'.

Moving forward, Hilcorp plans to move forward with previously approved revised procedure outlined in the email chain below, starting with PLUG #1B.

Please let me know if you have any questions.

Thanks,

**John LaMond**

Operations Engineer – Technical Services

Hilcorp Energy Company

1111 Travis

Houston, TX 77002

346-237-2210 (Office)

832-754-9692 (Cell)

[jlamond@hilcorp.com](mailto:jlamond@hilcorp.com)

**From:** Kuehling, Monica, EMNRD <[monica.kuehling@emnrd.nm.gov](mailto:monica.kuehling@emnrd.nm.gov)>

**Sent:** Wednesday, March 27, 2024 12:30 PM

**To:** Rennick, Kenneth G <[krennick@blm.gov](mailto:krennick@blm.gov)>; John LaMond <[jlamond@hilcorp.com](mailto:jlamond@hilcorp.com)>; Kade, Matthew H <[mkade@blm.gov](mailto:mkade@blm.gov)>

**Cc:** Farmington Regulatory Techs <[FarmingtonRegulatoryTechs@hilcorp.com](mailto:FarmingtonRegulatoryTechs@hilcorp.com)>; Brice Clyde - (C) <[Brice.Clyde@hilcorp.com](mailto:Brice.Clyde@hilcorp.com)>; Clay Padgett <[cpadgett@hilcorp.com](mailto:cpadgett@hilcorp.com)>; Lee Murphy <[lmurphy@hilcorp.com](mailto:lmurphy@hilcorp.com)>; Max Weaver <[mweaver@hilcorp.com](mailto:mweaver@hilcorp.com)>; Rustin Mikeska <[rmikeska@hilcorp.com](mailto:rmikeska@hilcorp.com)>

**Subject:** RE: [EXTERNAL] P&A Revision Request for Hilcorp's MCMANUS 10 (API # 3004505564)

**CAUTION:** External sender. DO NOT open links or attachments from UNKNOWN senders.

NMOCD approves below

Thank you

Monica Kuehling  
Compliance Officer Supervisor  
Deputy Oil and Gas Inspector  
New Mexico Oil Conservation Division  
North District  
Office Phone: 505-334-6178 ext. 123  
Cell Phone: 505-320-0243  
Email - [monica.kuehling@emnrd.nm.gov](mailto:monica.kuehling@emnrd.nm.gov)

---

**From:** Rennick, Kenneth G <[krennick@blm.gov](mailto:krennick@blm.gov)>

**Sent:** Tuesday, March 26, 2024 2:20 PM

**To:** John LaMond <[jlamond@hilcorp.com](mailto:jlamond@hilcorp.com)>; Kuehling, Monica, EMNRD <[monica.kuehling@emnrd.nm.gov](mailto:monica.kuehling@emnrd.nm.gov)>; Kade, Matthew H <[mkade@blm.gov](mailto:mkade@blm.gov)>

**Cc:** Farmington Regulatory Techs <[FarmingtonRegulatoryTechs@hilcorp.com](mailto:FarmingtonRegulatoryTechs@hilcorp.com)>; Brice Clyde - (C) <[Brice.Clyde@hilcorp.com](mailto:Brice.Clyde@hilcorp.com)>; Clay Padgett <[cpadgett@hilcorp.com](mailto:cpadgett@hilcorp.com)>; Lee Murphy <[lmurphy@hilcorp.com](mailto:lmurphy@hilcorp.com)>; Max Weaver <[mweaver@hilcorp.com](mailto:mweaver@hilcorp.com)>; Rustin Mikeska <[rmikeska@hilcorp.com](mailto:rmikeska@hilcorp.com)>

**Subject:** Re: [EXTERNAL] P&A Revision Request for Hilcorp's MCMANUS 10 (API # 3004505564)

The BLM finds the procedure appropriate.

Kenneth (Kenny) Rennick

Petroleum Engineer

Bureau of Land Management  
Farmington Field Office  
6251 College Blvd  
Farmington, NM 87402

Email: [krennick@blm.gov](mailto:krennick@blm.gov)  
Mobile & Text: 505.497.0019

---

**From:** John LaMond <[jlamond@hilcorp.com](mailto:jlamond@hilcorp.com)>

**Sent:** Tuesday, March 26, 2024 2:11 PM

To: Kuehling, Monica, EMNRD <[monica.kuehling@emnrd.nm.gov](mailto:monica.kuehling@emnrd.nm.gov)>; Rennick, Kenneth G <[krennick@blm.gov](mailto:krennick@blm.gov)>; Kade, Matthew H <[mkade@blm.gov](mailto:mkade@blm.gov)>

Cc: Farmington Regulatory Techs <[FarmingtonRegulatoryTechs@hilcorp.com](mailto:FarmingtonRegulatoryTechs@hilcorp.com)>; Brice Clyde - (C) <[Brice.Clyde@hilcorp.com](mailto:Brice.Clyde@hilcorp.com)>; Clay Padgett <[cpadgett@hilcorp.com](mailto:cpadgett@hilcorp.com)>; Lee Murphy <[lmurphy@hilcorp.com](mailto:lmurphy@hilcorp.com)>; Max Weaver <[mweaver@hilcorp.com](mailto:mweaver@hilcorp.com)>; Rustin Mikeska <[rmikeska@hilcorp.com](mailto:rmikeska@hilcorp.com)>; John LaMond <[jlmond@hilcorp.com](mailto:jlmond@hilcorp.com)>

Subject: [EXTERNAL] P&A Revision Request for Hilcorp's MCMANUS 10 (API # 3004505564)

This email has been received from outside of DOI - Use caution before clicking on links, opening attachments, or responding.

Good afternoon Monica and Kenny,

Hilcorp is planning to work on the MCMANUS 10 (API # 3004505564) P&A in the near future.

I have attached the approved P&A NOI, as well as an updated procedure based on the COAs in the approved NOI.

Based on the COAs, Hilcorp requests the following adjustments to the approved procedure:

- PLUG #1a: The CIRC will be set at 2,320' (Int. Surface Shoe @ 2,361', PC Perfs @ 2,361', PC Top @ 2,327'). (NMOCD provided verbal approval for this after discussing the depths compared to the original COAs)
  - Pump 91' of cement beneath the CIRC from 2,320' to 2,411' (50' beneath the intermediate shoe).
- PLUG #1b: The CIBP will be set at 2,311' (Int. Surface Shoe @ 2,361', PC Perfs @ 2,361', PC Top @ 2,327', FRD Top @ 1,937') as stated in the original NOI. (NMOCD provided verbal approval for this after discussing the depths compared to the original COAs)
  - Pump 474' of cement on top of the CIBP from 1,837' to 2,311'.
- All other plugs have been adjusted according to the BLM & NMOCD formation tops. Please see the revised procedure attached and below.





**HILCORP ENERGY COMPANY**  
**MCMANUS 10**  
**P&A NOI**

API #: 3004505564

**JOB PROCEDURES**

1. Contact NMOCD and BLM (where applicable) 24 hours prior to MIRU.
2. Hold pre-job safety meeting. Verify cathodic is off. Comply with all NMOCD, BLM, and HEC safety and environmental regulations.
3. MIRU service rig and associated equipment; NU and test BOP.
4. Set a 2-7/8" CICR at +/- 2,320' to isolate the **PC Perfs**.
5. **PLUG #1a: 3sx of Class G Cement (15.8 PPG, 1.15 yield); Int. Casing Shoe @ 2,361' | PC Perfs @ 2,361' | PC Top @ 2,327':**  
 Pump a 3 sack cement plug beneath the 2-7/8" CICR inside the 2-7/8" casing (est. **TOC @ +/- 2,320'** & est. **BOC @ +/- 2,411'**).
6. Set a 2-7/8" CIBP at +/- 2,311'.
7. Load the well as needed. Pressure test the casing above the plug set @ 2,311' to 560 psig.
8. RU Wireline. Run CBL. Record Top of Cement. All subsequent plugs below are subject to change pending CBL results.
9. **PLUG #1b: 14sx of Class G Cement (15.8 PPG, 1.15 yield); Int. Casing Shoe @ 2,361' | PC Perfs @ 2,361' | PC Top @ 2,327' | FRD Top @ 1,937':**  
 Pump a 14 sack balanced cement plug inside the 2-7/8" casing (est. **TOC @ +/- 1,837'** & est. **BOC @ +/- 2,311'**).
10. POOH w/ work string. TIH & perforate squeeze holes @ +/- 1,747'. RIH w/ 2-7/8" CICR and set CICR @ +/- 1,697'. TIH w/ work string & sting into CICR. Establish injection.
11. **PLUG #2: 84sx of Class G Cement (15.8 PPG, 1.15 yield); KRD Top @ 1,697' | OJO Top @ 1,427':**  
 Pump 71sx of cement in the 5-1/2" casing X 7-7/8" open hole annulus (est. **TOC @ +/- 1,277'** & est. **BOC @ +/- 1,747'**). Pump an additional 2sx of cement beneath the 2-7/8" CICR (est. **TOC @ +/- 1,697'** & est. **BOC @ +/- 1,747'**). Sting out of retainer, pump a 11 sack balanced cement plug on top of the CICR. (est. **TOC @ 1,327'** & est. **BOC @ +/- 1,697'**). WOC for 4 hrs, tag WOC w/ work string. \*Note cement plug lengths and volumes account for excess.
12. POOH w/ work string. TIH & perforate squeeze holes @ +/- 154'. Establish circulation.
13. **PLUG #3: 31sx of Class G Cement (15.8 PPG, 1.15 yield); Surf. Casing Shoe @ 104':**  
 Pump 8sx of cement in the 5-1/2" casing X 7-7/8" open hole annulus (est. **TOC @ +/- 104'** & est. **BOC @ +/- 154'**). Continue pumping 18sx of cement in the 8-5/8" casing X 5-1/2" casing annulus (est. **TOC @ +/- 0'** & est. **BOC @ +/- 104'**). Pump a 5 sack balanced cement plug inside the 2-7/8" casing (est. **TOC @ +/- 0'** & **BOC @ +/- 154'**). WOC for 4 hrs, tag WOC w/ work string.
14. ND BOP, cut off casing below casing flange. Top off cement in surface casing annulus, if needed. Install a P&A marker with cement to comply with regulations. If down, move off location, cut off anchors, and restore location.

Do the NMOCD and BLM approve of the revised procedure?

Thanks,

**John LaMond**

Operations Engineer – Technical Services

Hilcorp Energy Company

1111 Travis

Houston, TX 77002

346-237-2210 (Office)

832-754-9692 (Cell)

[jlamond@hilcorp.com](mailto:jlamond@hilcorp.com)

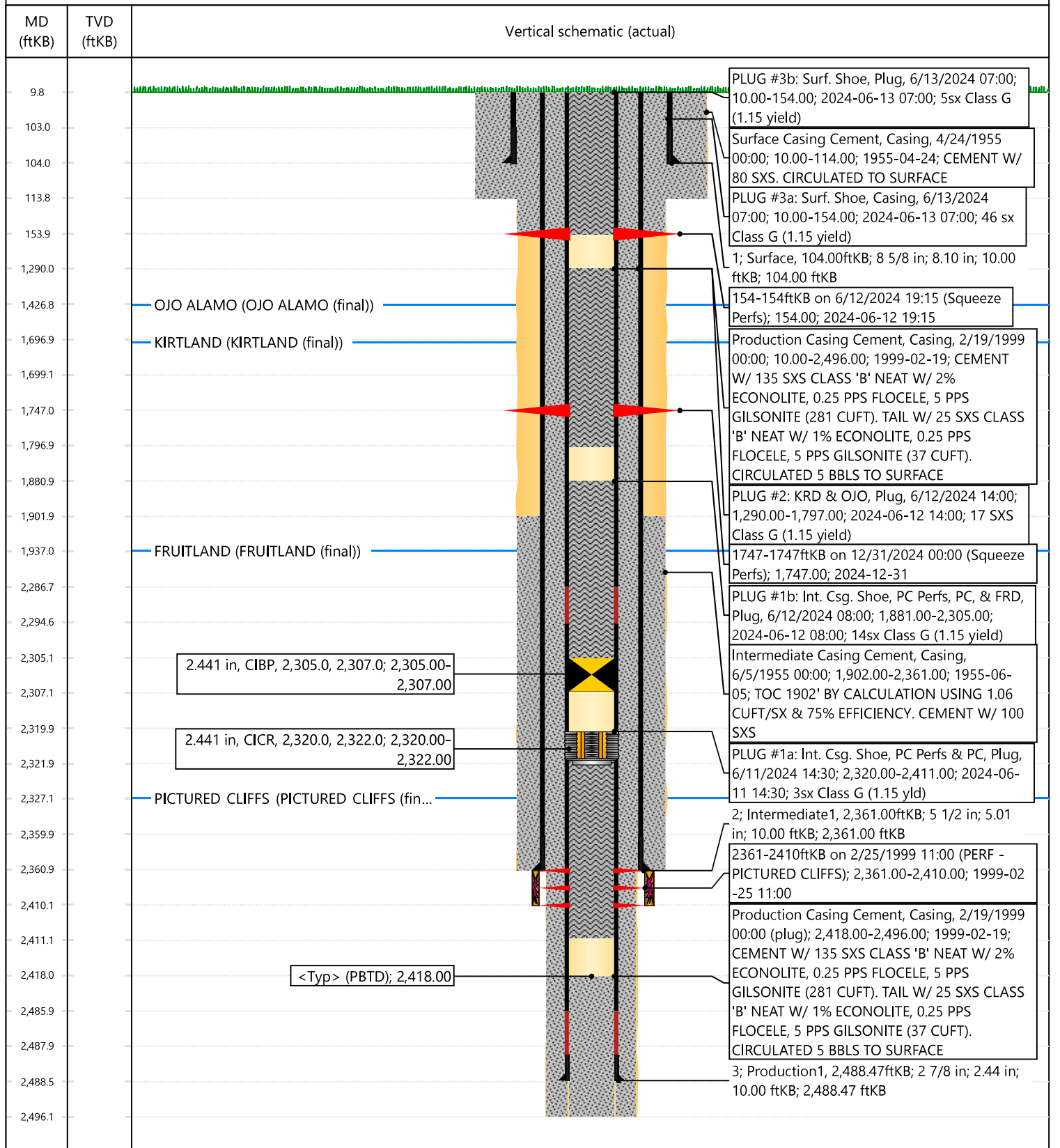


## Current Schematic - Version 3

Well Name: MCMANUS #10

API / UWI 3004505564	Surface Legal Location 004-025N-008W-A	Field Name BALLARD PICTURED CLIFFS (GAS)	Route 0909	State/Province NEW MEXICO	Well Configuration Type VERTICAL
Ground Elevation (ft) 6,720.00	Original KB/RT Elevation (ft) 6,730.00	Tubing Hanger Elevation (ft)	RKB to GL (ft) 10.00	KB-Casing Flange Distance (ft)	KB-Tubing Hanger Distance (ft)

## Original Hole [VERTICAL]



**District I**  
1625 N. French Dr., Hobbs, NM 88240  
Phone:(575) 393-6161 Fax:(575) 393-0720

**District II**  
811 S. First St., Artesia, NM 88210  
Phone:(575) 748-1283 Fax:(575) 748-9720

**District III**  
1000 Rio Brazos Rd., Aztec, NM 87410  
Phone:(505) 334-6178 Fax:(505) 334-6170

**District IV**  
1220 S. St Francis Dr., Santa Fe, NM 87505  
Phone:(505) 476-3470 Fax:(505) 476-3462

State of New Mexico  
Energy, Minerals and Natural Resources  
Oil Conservation Division  
1220 S. St Francis Dr.  
Santa Fe, NM 87505

CONDITIONS

Action 354879

CONDITIONS

Operator: HILCORP ENERGY COMPANY 1111 Travis Street Houston, TX 77002	OGRID: 372171
	Action Number: 354879
	Action Type: [C-103] Sub. Plugging (C-103P)

CONDITIONS

Created By	Condition	Condition Date
mkuehling	well plugged 6/14/24	7/5/2024