

Well Name: ROSA UNIT	Well Location: T31N / R6W / SEC 12 / SENW / 36.91613 / -107.41551	County or Parish/State: RIO ARRIBA / NM
Well Number: 149C	Type of Well: CONVENTIONAL GAS WELL	Allottee or Tribe Name:
Lease Number: NMSF078767	Unit or CA Name: ROSA UNIT, ROSA UNIT--MV	Unit or CA Number: NMNM78407A, NMNM78407E
US Well Number: 3003930723	Operator: LOGOS OPERATING LLC	

Notice of Intent

Sundry ID: 2797433

Type of Submission: Notice of Intent

Type of Action: Other

Date Sundry Submitted: 06/26/2024

Time Sundry Submitted: 03:14

Date proposed operation will begin: 06/26/2024

Procedure Description: The Rosa Unit 149C is at risk of pressure influence from the nearby Pad 24 completions. It is also an ideal candidate to install pressure monitoring equipment for Pad 24 completions. In order to minimize risk of high pressure at surface and monitor nearby completions, it is recommended to isolate the wellbore and actively monitor pressure via downhole gauge for a total well observation period of 9-12 months. See attached procedure.

Surface Disturbance

Is any additional surface disturbance proposed?: No

NOI Attachments

Procedure Description

Rosa_Unit_149C___Wellbore_Isolation_Procedure_20240626151401.pdf

Well Name: ROSA UNIT

Well Location: T31N / R6W / SEC 12 /
SENW / 36.91613 / -107.41551County or Parish/State: RIO
ARRIBA / NM

Well Number: 149C

Type of Well: CONVENTIONAL GAS
WELL

Allottee or Tribe Name:

Lease Number: NMSF078767

Unit or CA Name: ROSA UNIT, ROSA
UNIT--MVUnit or CA Number:
NMNM78407A, NMNM78407E

US Well Number: 3003930723

Operator: LOGOS OPERATING LLC

Operator

I certify that the foregoing is true and correct. Title 18 U.S.C. Section 1001 and Title 43 U.S.C. Section 1212, make it a crime for any person knowingly and willfully to make to any department or agency of the United States any false, fictitious or fraudulent statements or representations as to any matter within its jurisdiction. Electronic submission of Sundry Notices through this system satisfies regulations requiring a

Operator Electronic Signature: ETTA TRUJILLO

Signed on: JUN 26, 2024 03:14 PM

Name: LOGOS OPERATING LLC

Title: Regulatory Specialist

Street Address: 2010 AFTON PLACE

City: Farmington

State: NM

Phone: (505) 324-4154

Email address: ETRUJILLO@LOGOSRESOURCESLLC.COM

Field

Representative Name:

Street Address:

City:

State:

Zip:

Phone:

Email address:

BLM Point of Contact

BLM POC Name: KENNETH G RENNICK

BLM POC Title: Petroleum Engineer

BLM POC Phone: 5055647742

BLM POC Email Address: krennick@blm.gov

Disposition: Approved

Disposition Date: 06/26/2024

Signature: Kenneth Rennick



WELLBORE ISOLATION/PRESSURE MONITORING-NMOCD (2024)

Rosa Unit 149C

30-039-30723

1910' FNL & 2225' FWL

Section 12, T31N, R06W

Rio Arriba, New Mexico

LAT: 36.9161072° N LONG: -107.4154968° W

Mesaverde/Mancos/Dakota

PROJECT OBJECTIVE:

The Rosa Unit 149C is at risk of pressure influence from the nearby Pad 24 completions. It is also an ideal candidate to install pressure monitoring equipment for Pad 24 completions. In order to minimize risk of high pressure at surface and monitor nearby completions, it is recommended to isolate the wellbore and actively monitor pressure via downhole gauge for a total well observation period of 9-12 months.

WORKOVER PROCEDURE:

1. Hold safety meeting. MIRU workover rig. Place fire and safety equipment in strategic locations. Comply with all LOGOS, BLM, and NMOCD rules and regulations.
2. Lay flow lines. Check and record casing and tubing pressures. Sell pressure down to line. Kill well if necessary.
3. Nipple down wellhead and nipple up BOP.
4. TOOH and stand back tubing.
5. Set bridge plug within 50' of the Dakota perforations.
6. TIH and set cement retainer at ~6918'.
7. RIH with pressure gauge and tubing and sting into retainer.
8. Leave well shut in during offset completions and post completions for pressure monitoring.
9. Once offset completions are complete and adequate pressure monitoring data has been collected, TOOH with tubing and laydown pressure gauge.
10. Trip in hole and mill out cement retainer and bridge plug.
11. Run 2-3/8" tubing back in hole and return well to production.

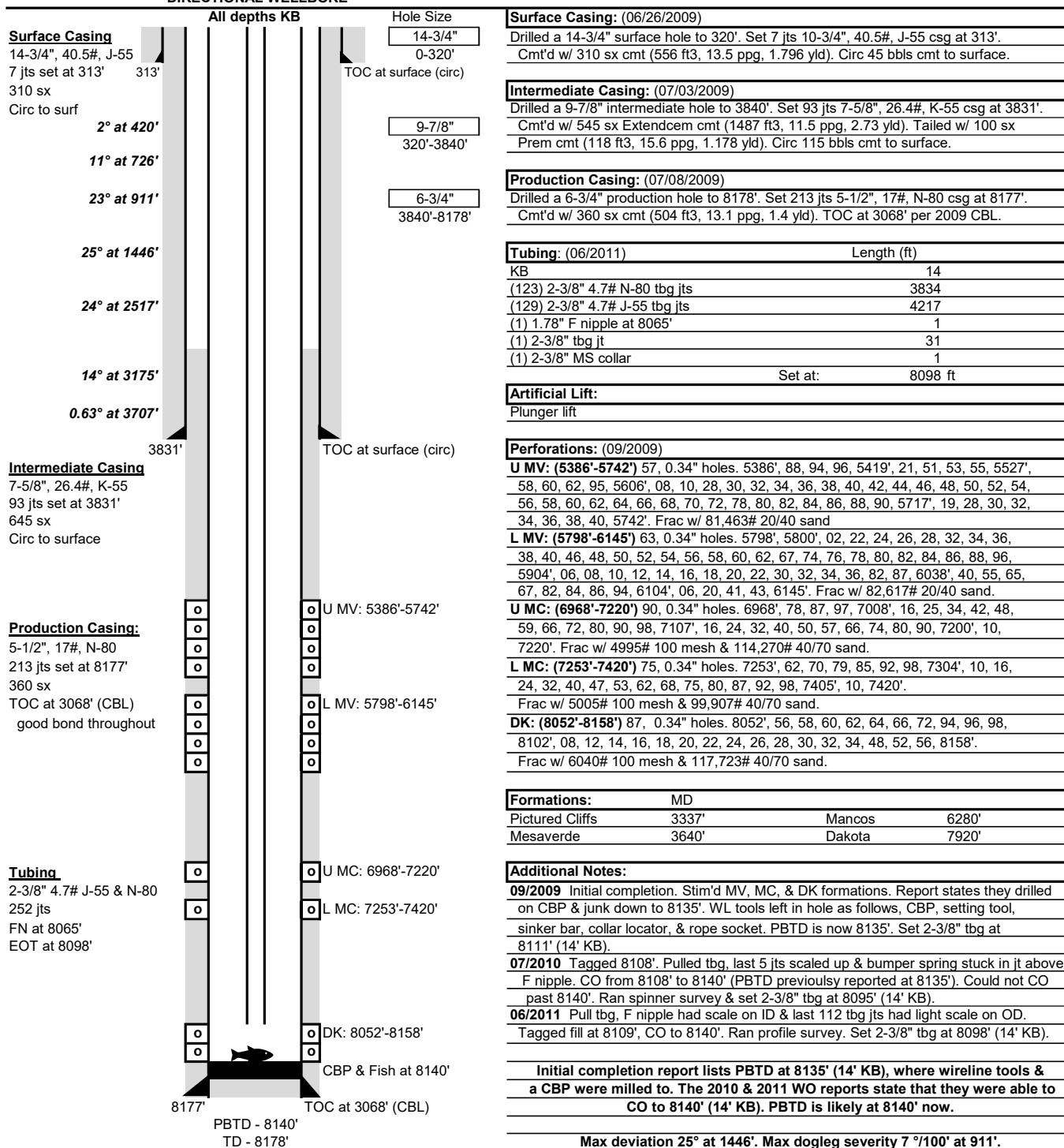


Wellbore Schematic

Well Name: Rosa Unit 149C
 Location: F-12-31N-06W 1910' FNL & 2225' FWL
 County: Rio Arriba, NM
 API #: 30-039-30723
 Co-ordinates: Lat 36.9161072, Long -107.4154968 NAD83
 Elevations: GROUND: 6286'
 KB: 6300'
 Depths (KB): PBTD: 8140'
 TD: 8178'

Date Prepared: 4/25/2024 Moss
 Reviewed By: Apr 30, 2024
 Last Updated:
 Spud Date: 6/25/2009
 Completion Date: 9/19/2009
 Last Workover Date: 6/9/2011

DIRECTIONAL WELLBORE



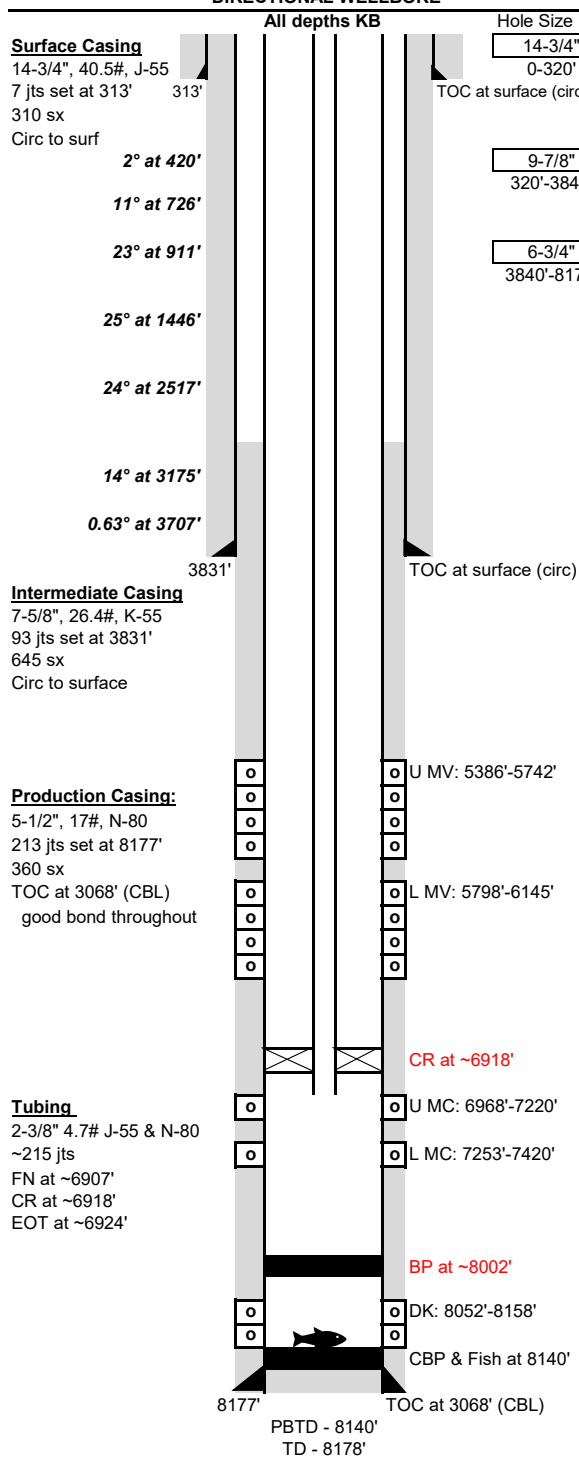


Proposed Isolation Wellbore Schematic

Well Name: Rosa Unit 149C
 Location: F-12-31N-06W 1910' FNL & 2225' FWL
 County: Rio Arriba, NM
 API #: 30-039-30723
 Co-ordinates: Lat 36.9161072, Long -107.4154968 NAD83
 Elevations: GROUND: 6286'
 KB: 6300'
 Depths (KB): PBTD: 8140'
 TD: 8178'

Date Prepared: 4/25/2024 Moss
 Reviewed By:
 Last Updated:
 Spud Date: 6/25/2009
 Completion Date: 9/19/2009
 Last Workover Date: 6/9/2011

DIRECTIONAL WELLBORE



Surface Casing: (06/26/2009)
 Drilled a 14-3/4" surface hole to 320'. Set 7 jts 10-3/4", 40.5#, J-55 csg at 313'.
 Cmt'd w/ 310 sx cmt (556 ft3, 13.5 ppg, 1.796 yld). Circ 45 bbls cmt to surface.

Intermediate Casing: (07/03/2009)
 Drilled a 9-7/8" intermediate hole to 3840'. Set 93 jts 7-5/8", 26.4#, K-55 csg at 3831'.
 Cmt'd w/ 545 sx Extendcem cmt (1487 ft3, 11.5 ppg, 2.73 yld). Tailed w/ 100 sx
 Prem cmt (118 ft3, 15.6 ppg, 1.178 yld). Circ 115 bbls cmt to surface.

Production Casing: (07/08/2009)
 Drilled a 6-3/4" production hole to 8178'. Set 213 jts 5-1/2", 17#, N-80 csg at 8177'.
 Cmt'd w/ 360 sx cmt (504 ft3, 13.1 ppg, 1.4 yld). TOC at 3068' per 2009 CBL.

Tubing:	Length (ft)
KB	14
(~215) 2-3/8" 4.7# N-80 & J-55 tbg jts	6893
(1) 1.78" F nipple	1
(1) P-4000C Gauge Assembly	6
(1) 2-3/8" x 4' pup joint	4
(1) CR stinger	6
Set at:	6924 ft

Artificial Lift:
 Plunger lift

Perforations: (09/2009)
U MV: (5386'-5742') 57, 0.34" holes. 5386', 88, 94, 96, 5419', 21, 51, 53, 55, 5527', 58, 60, 62, 95, 5606', 08, 10, 28, 30, 32, 34, 36, 38, 40, 42, 44, 46, 48, 50, 52, 54, 56, 58, 60, 62, 64, 66, 68, 70, 72, 78, 80, 82, 84, 86, 88, 90, 5717', 19, 28, 30, 32, 34, 36, 38, 40, 5742'. Frac w/ 81,463# 20/40 sand
L MV: (5798'-6145') 63, 0.34" holes. 5798', 5800', 02, 22, 24, 26, 28, 32, 34, 36, 38, 40, 46, 48, 50, 52, 54, 56, 58, 60, 62, 67, 74, 76, 78, 80, 82, 84, 86, 88, 96, 5904', 06, 08, 10, 12, 14, 16, 18, 20, 22, 30, 32, 34, 36, 82, 87, 6038', 40, 55, 65, 67, 82, 84, 86, 94, 6104', 06, 20, 41, 43, 6145'. Frac w/ 82,617# 20/40 sand.
U MC: (6968'-7220') 90, 0.34" holes. 6968', 78, 87, 97, 7008', 16, 25, 34, 42, 48, 59, 66, 72, 80, 90, 98, 7107', 16, 24, 32, 40, 50, 57, 66, 74, 80, 90, 7200', 10, 7220'. Frac w/ 4995# 100 mesh & 114,270# 40/70 sand.
L MC: (7253'-7420') 75, 0.34" holes. 7253', 62, 70, 79, 85, 92, 98, 7304', 10, 16, 24, 32, 40, 47, 53, 62, 68, 75, 80, 87, 92, 98, 7405', 10, 7420'. Frac w/ 5005# 100 mesh & 99,907# 40/70 sand.
DK: (8052'-8158') 87, 0.34" holes. 8052', 56, 58, 60, 62, 64, 66, 72, 94, 96, 98, 8102', 08, 12, 14, 16, 18, 20, 22, 24, 26, 28, 30, 32, 34, 48, 52, 56, 8158'. Frac w/ 6040# 100 mesh & 117,723# 40/70 sand.

Formations:	MD
Pictured Cliffs	3337'
Mesaverde	3640'
	Mancos 6280'
	Dakota 7920'

Additional Notes:
 09/2009 Initial completion. Stim'd MV, MC, & DK formations. Report states they drilled on CBP & junk down to 8135'. WL tools left in hole as follows, CBP, setting tool, sinker bar, collar locator, & rope socket. PBTD is now 8135'. Set 2-3/8" tbg at 8111' (14' KB).
 07/2010 Tagged 8108'. Pulled tbg, last 5 jts scaled up & bumper spring stuck in jt above F nipple. CO from 8108' to 8140' (PBTD previously reported at 8135'). Could not CO past 8140'. Ran spinner survey & set 2-3/8" tbg at 8095' (14' KB).
 06/2011 Pull tbg. F nipple had scale on ID & last 112 tbg jts had light scale on OD. Tagged fill at 8109', CO to 8140'. Ran profile survey. Set 2-3/8" tbg at 8098' (14' KB).

Initial completion report lists PBTD at 8135' (14' KB), where wireline tools & a CBP were milled to. The 2010 & 2011 WO reports state that they were able to CO to 8140' (14' KB). PBTD is likely at 8140' now.

Max deviation 25° at 1446'. Max dogleg severity 7 °/100' at 911'.

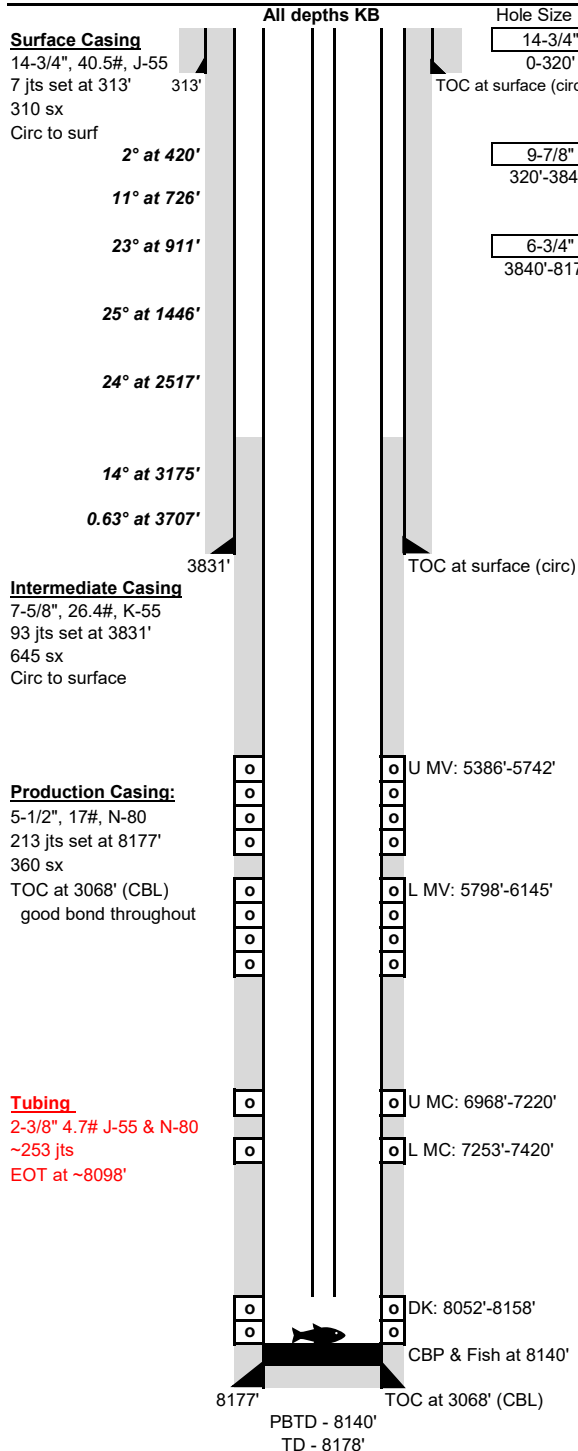


Proposed Wellbore Schematic - Return to Production

Well Name: Rosa Unit 149C
 Location: F-12-31N-06W 1910' FNL & 2225' FWL
 County: Rio Arriba, NM
 API #: 30-039-30723
 Co-ordinates: Lat 36.9161072, Long -107.4154968 NAD83
 Elevations: GROUND: 6286'
 KB: 6300'
 Depths (KB): PBTD: 8140'
 TD: 8178'

Date Prepared: 4/25/2024 Moss
 Reviewed By:
 Last Updated:
 Spud Date: 6/25/2009
 Completion Date: 9/19/2009
 Last Workover Date: 6/9/2011

DIRECTIONAL WELLBORE



Surface Casing: (06/26/2009)
 Drilled a 14-3/4" surface hole to 320'. Set 7 jts 10-3/4", 40.5#, J-55 csg at 313'.
 Cmt'd w/ 310 sx cmt (556 ft3, 13.5 ppg, 1.796 yld). Circ 45 bbls cmt to surface.

Intermediate Casing: (07/03/2009)
 Drilled a 9-7/8" intermediate hole to 3840'. Set 93 jts 7-5/8", 26.4#, K-55 csg at 3831'.
 Cmt'd w/ 545 sx Extendcem cmt (1487 ft3, 11.5 ppg, 2.73 yld). Tailed w/ 100 sx
 Prem cmt (118 ft3, 15.6 ppg, 1.178 yld). Circ 115 bbls cmt to surface.

Production Casing: (07/08/2009)
 Drilled a 6-3/4" production hole to 8178'. Set 213 jts 5-1/2", 17#, N-80 csg at 8177'.
 Cmt'd w/ 360 sx cmt (504 ft3, 13.1 ppg, 1.4 yld). TOC at 3068' per 2009 CBL.

Tubing:	Length (ft)
KB	14
(~253) 2-3/8" 4.7# N-80 & J-55 tbg jts	8082
(1) 1.78" F nipple	1
(1) 2-3/8" MS collar	1
Set at:	8098 ft

Artificial Lift:
 Plunger lift

Perforations: (09/2009)
U MV: (5386'-5742') 57, 0.34" holes. 5386', 88, 94, 96, 5419', 21, 51, 53, 55, 5527', 58, 60, 62, 95, 5606', 08, 10, 28, 30, 32, 34, 36, 38, 40, 42, 44, 46, 48, 50, 52, 54, 56, 58, 60, 62, 64, 66, 68, 70, 72, 78, 80, 82, 84, 86, 88, 90, 5717', 19, 28, 30, 32, 34, 36, 38, 40, 5742'. Frac w/ 81,463# 20/40 sand
L MV: (5798'-6145') 63, 0.34" holes. 5798', 5800', 02, 22, 24, 26, 28, 32, 34, 36, 38, 40, 46, 48, 50, 52, 54, 56, 58, 60, 62, 67, 74, 76, 78, 80, 82, 84, 86, 88, 96, 5904', 06, 08, 10, 12, 14, 16, 18, 20, 22, 30, 32, 34, 36, 82, 87, 6038', 40, 55, 65, 67, 82, 84, 86, 94, 6104', 06, 20, 41, 43, 6145'. Frac w/ 82,617# 20/40 sand.
U MC: (6968'-7220') 90, 0.34" holes. 6968', 78, 87, 97, 7008', 16, 25, 34, 42, 48, 59, 66, 72, 80, 90, 98, 7107', 16, 24, 32, 40, 50, 57, 66, 74, 80, 90, 7200', 10, 7220'. Frac w/ 4995# 100 mesh & 114,270# 40/70 sand.
L MC: (7253'-7420') 75, 0.34" holes. 7253', 62, 70, 79, 85, 92, 98, 7304', 10, 16, 24, 32, 40, 47, 53, 62, 68, 75, 80, 87, 92, 98, 7405', 10, 7420'. Frac w/ 5005# 100 mesh & 99,907# 40/70 sand.
DK: (8052'-8158') 87, 0.34" holes. 8052', 56, 58, 60, 62, 64, 66, 72, 94, 96, 98, 8102', 08, 12, 14, 16, 18, 20, 22, 24, 26, 28, 30, 32, 34, 48, 52, 56, 8158'. Frac w/ 6040# 100 mesh & 117,723# 40/70 sand.

Formations:	MD
Pictured Cliffs	3337'
Mancos	6280'
Mesaverde	3640'
Dakota	7920'

Additional Notes:
09/2009 Initial completion. Stim'd MV, MC, & DK formations. Report states they drilled on CBP & junk down to 8135'. WL tools left in hole as follows, CBP, setting tool, sinker bar, collar locator, & rope socket. PBTD is now 8135'. Set 2-3/8" tbg at 8111' (14' KB).
07/2010 Tagged 8108'. Pulled tbg, last 5 jts scaled up & bumper spring stuck in jt above F nipple. CO from 8108' to 8140' (PBTD previously reported at 8135'). Could not CO past 8140'. Ran spinner survey & set 2-3/8" tbg at 8095' (14' KB).
06/2011 Pull tbg, F nipple had scale on ID & last 112 tbg jts had light scale on OD. Tagged fill at 8109', CO to 8140'. Ran profile survey. Set 2-3/8" tbg at 8098' (14' KB).

Initial completion report lists PBTD at 8135' (14' KB), where wireline tools & a CBP were milled to. The 2010 & 2011 WO reports state that they were able to CO to 8140' (14' KB). PBTD is likely at 8140' now.

Max deviation 25° at 1446'. Max dogleg severity 7 °/100' at 911'.

District I
1625 N. French Dr., Hobbs, NM 88240
Phone:(575) 393-6161 Fax:(575) 393-0720
District II
811 S. First St., Artesia, NM 88210
Phone:(575) 748-1283 Fax:(575) 748-9720
District III
1000 Rio Brazos Rd., Aztec, NM 87410
Phone:(505) 334-6178 Fax:(505) 334-6170
District IV
1220 S. St Francis Dr., Santa Fe, NM 87505
Phone:(505) 476-3470 Fax:(505) 476-3462

State of New Mexico
Energy, Minerals and Natural Resources
Oil Conservation Division
1220 S. St Francis Dr.
Santa Fe, NM 87505

CONDITIONS

Action 359035

CONDITIONS

Operator: LOGOS OPERATING, LLC 2010 Afton Place Farmington, NM 87401	OGRID: 289408
	Action Number: 359035
	Action Type: [C-103] NOI Workover (C-103G)

CONDITIONS

Created By	Condition	Condition Date
dmcclure	Approved to isolate the well. Operator shall submit a C-103R once the well has been isolated. Operator shall submit a C-103G prior to removing the isolation plug followed by another C-103R once the isolation plug has been removed.	7/19/2024