

Submit 1 Copy To Appropriate District
Office
District I - (575) 393-6161
1625 N. French Dr., Hobbs, NM 88240
District II - (575) 748-1283
811 S. First St., Artesia, NM 88210
District III - (505) 334-6178
1000 Rio Brazos Rd., Aztec, NM 87410
District IV - (505) 476-3460
1220 S. St. Francis Dr., Santa Fe, NM
87505

State of New Mexico
Energy, Minerals and Natural Resources

Form C-103
Revised July 18, 2013

OIL CONSERVATION DIVISION
1220 South St. Francis Dr.
Santa Fe, NM 87505

WELL API NO. 30-025-29288
5. Indicate Type of Lease STATE <input checked="" type="checkbox"/> FEE <input type="checkbox"/>
6. State Oil & Gas Lease No.
7. Lease Name or Unit Agreement Name Mule SWD
8. Well Number 1
9. OGRID Number 013837
10. Pool name or Wildcat SWD, Wolfcamp

SUNDRY NOTICES AND REPORTS ON WELLS
(DO NOT USE THIS FORM FOR PROPOSALS TO DRILL OR TO DEEPEN OR PLUG BACK TO A DIFFERENT RESERVOIR. USE "APPLICATION FOR PERMIT" (FORM C-101) FOR SUCH PROPOSALS.)

1. Type of Well: Oil Well ☐ Gas Well ☐ Other SWD

2. Name of Operator
MACK ENERGY CORPORATION

3. Address of Operator
PO BOX 960, ARTESIA, NM 88211-0960

4. Well Location
Unit Letter M : 660 feet from the SOUTH line and 660 feet from the WEST line
Section 13 Township 18S Range 34E NMPM County LEA

11. Elevation (Show whether DR, RKB, RT, GR, etc.)
3982' GR

12. Check Appropriate Box to Indicate Nature of Notice, Report or Other Data

NOTICE OF INTENTION TO:

PERFORM REMEDIAL WORK ☒ PLUG AND ABANDON ☐
TEMPORARILY ABANDON ☐ CHANGE PLANS ☐
PULL OR ALTER CASING ☐ MULTIPLE COMPL ☐
DOWNHOLE COMMINGLE ☐
CLOSED-LOOP SYSTEM ☐
OTHER: ☐

SUBSEQUENT REPORT OF:

REMEDIAL WORK ☐ ALTERING CASING ☐
COMMENCE DRILLING OPNS. ☐ P AND A ☐
CASING/CEMENT JOB ☐
OTHER: Water Analysis ☐

13. Describe proposed or completed operations. (Clearly state all pertinent details, and give pertinent dates, including estimated date of starting any proposed work). SEE RULE 19.15.7.14 NMAC. For Multiple Completions: Attach wellbore diagram of proposed completion or recompletion.

Mack Energy proposes to repair Suspected HIT Procedure for the Mule SWD #1 as follows:

1. MIRU, NU BOP
2. Unset packer and POH with tubing and packer
3. PU work string, 4 3/4" MT bit and 5 1/2" casing scraper and RIH w/ tbg to 10,150'
4. POH and LD work string
5. PU new 5-1/2" N.P. Arrowset packer and RIH w/ 2 7/8" IPC production string while hydrotesting to 6000 psi
6. Set Packer 100' or closer to top perf (TP-10,179'), Push pull test packer to 20 pts.
7. Test casing to 500 psi
8. Unlatch from packer and circulate packer fluid to surface.
9. Latch on to packer and set tubing in 20 pts compression
10. ND BOP and flange well up.

**Condition of Approval: notify
OCD Hobbs office 24 hours
prior of running MIT Test & Chart**

Spud Date:

Rig Release Date:

I hereby certify that the information above is true and complete to the best of my knowledge and belief.

SIGNATURE Jerry W Sherrell TITLE REGULATORY SUPERVISOR DATE 8/2/2024

Type or print name JERRY W SHERRELL E-mail address: jerrys@mec.com PHONE: 575-748-1288

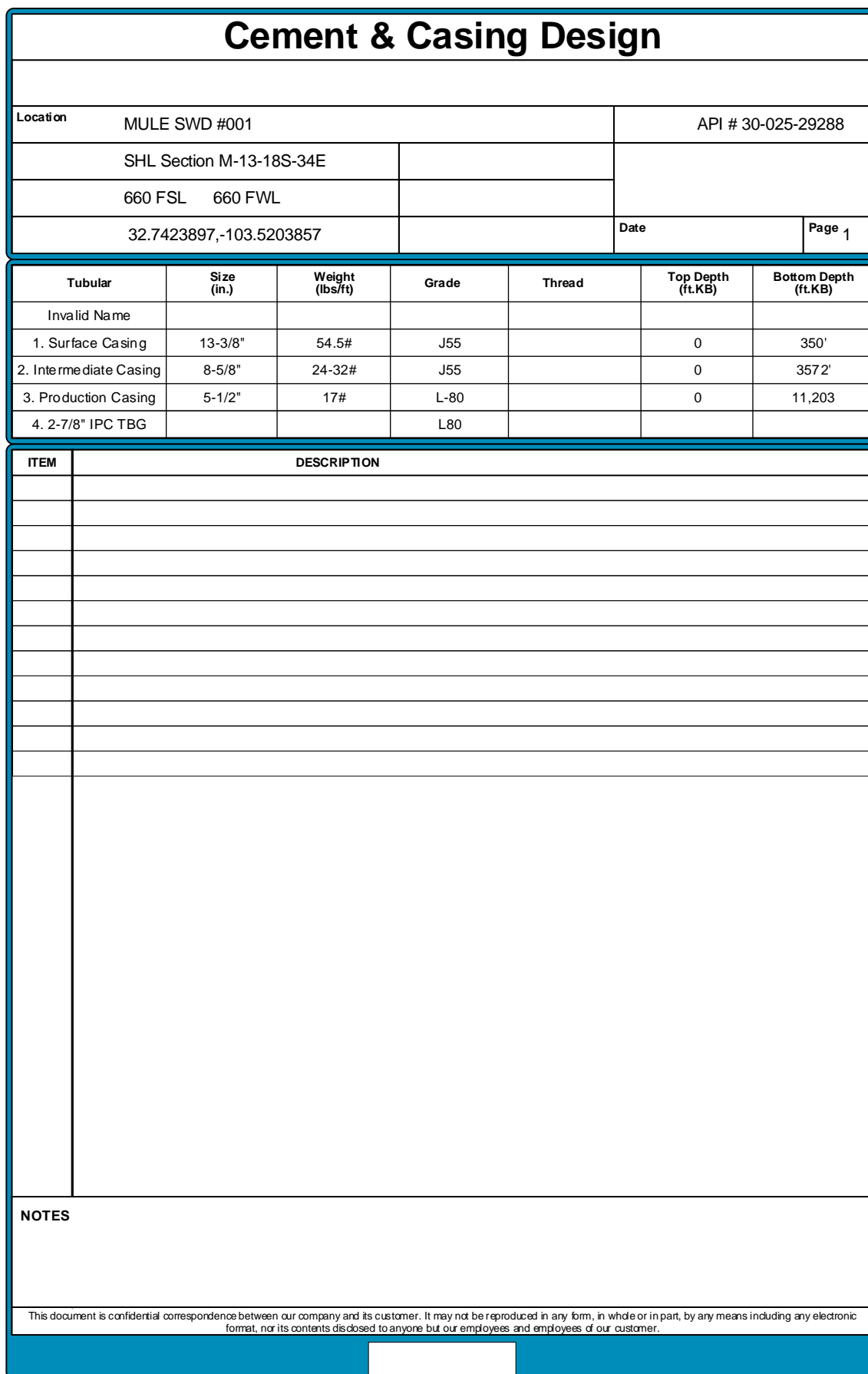
For State Use Only

APPROVED BY: Kerry Fortner TITLE Compliance Officer A DATE 8/5/24
Conditions of Approval (if any):

MACK ENERGY CORPORATION
MULE SWD #001
API # 30-025-29288
M-13-18S-34E

**Could Not Chart-Well Would Not Pressure Up
Suspected HIT Procedure**

1. MIRU PU.
2. NU BOP
3. Unset packer and POH with tubing and packer
4. PU work string, 4 3/4" MT bit and 5 1/2" casing scraper and RIH w/ tbg to 10,150'
5. POH and LD work string
6. PU new 5-1/2" N.P. Arrowset packer and RIH w/ 2 7/8" IPC production string while hydrotesting to 6000 psi
7. Set Packer 100' or closer to top perf (TP-10,179')
8. Push pull test packer to 20 pts.
9. Test casing to 500 psi
10. Unlatch from packer and circulate packer fluid to surface.
11. Latch on to packer and set tubing in 20 pts compression
12. ND BOP and flange well up.
13. RDMO





Cement & Casing Design

Location	MULE SWD #001	API # 30-025-29288	
	SHL Section M-13-18S-34E		
	660 FSL 660 FWL		
	32.7423897,-103.5203857	Date	Page 1

Tubular	Size (in.)	Weight (lbs/ft)	Grade	Thread	Top Depth (ft.KB)	Bottom Depth (ft.KB)
Invalid Name						
1. Surface Casing	13-3/8"	54.5#	J55		0	350'
2. Intermediate Casing	8-5/8"	24-32#	J55		0	3572'
3. Production Casing	5-1/2"	17#	L-80		0	11,203
4. 2-7/8" IPC TBG			L80		0	10,072

[illegible]

NOTES

This document is confidential correspondence between our company and its customer. It may not be reproduced in any form, in whole or in part, by any means including any electronic format, nor its contents disclosed to anyone but our employees and employees of our customer.

District I
1625 N. French Dr., Hobbs, NM 88240
Phone:(575) 393-6161 Fax:(575) 393-0720
District II
811 S. First St., Artesia, NM 88210
Phone:(575) 748-1283 Fax:(575) 748-9720
District III
1000 Rio Brazos Rd., Aztec, NM 87410
Phone:(505) 334-6178 Fax:(505) 334-6170
District IV
1220 S. St Francis Dr., Santa Fe, NM 87505
Phone:(505) 476-3470 Fax:(505) 476-3462

State of New Mexico
Energy, Minerals and Natural Resources
Oil Conservation Division
1220 S. St Francis Dr.
Santa Fe, NM 87505

CONDITIONS

Action 369698

CONDITIONS

Operator: MACK ENERGY CORP P.O. Box 960 Artesia, NM 882110960	OGRID: 13837
	Action Number: 369698
	Action Type: [C-103] NOI Workover (C-103G)

CONDITIONS

Created By	Condition	Condition Date
kfortner	Run PWOT MIT/BHT	8/5/2024