

Form 3160-5
(June 2015)UNITED STATES
DEPARTMENT OF THE INTERIOR
BUREAU OF LAND MANAGEMENTFORM APPROVED
OMB No. 1004-0137
Expires: January 31, 2018**SUNDRY NOTICES AND REPORTS ON WELLS**
**Do not use this form for proposals to drill or to re-enter an
abandoned well. Use Form 3160-3 (APD) for such proposals.**5. Lease Serial No. **NMNM-0254700**

6. If Indian, Allottee or Tribe Name

SUBMIT IN TRIPLICATE - Other instructions on page 2

1. Type of Well

☒ Oil Well ☐ Gas Well ☐ Other2. Name of Operator **OXY USA INC.**3a. Address **PO BOX 4294
HOUSTON, TX 77210**3b. Phone No. (include area code)
(972) 404-3722

7. If Unit of CA/Agreement, Name and/or No.

8. Well Name and No. **CATO SAN ANDRES UNIT #052**9. API Well No. **30-005-20009**10. Field and Pool or Exploratory Area
CATO; SAN ANDRES4. Location of Well (Footage, Sec., T., R., M., or Survey Description)
660 FSL, 660 FWL, UNIT M, SEC 12, T8S R30E11. Country or Parish, State
CHAVES**12. CHECK THE APPROPRIATE BOX(ES) TO INDICATE NATURE OF NOTICE, REPORT OR OTHER DATA**

TYPE OF SUBMISSION	TYPE OF ACTION				
<input type="checkbox"/> Notice of Intent	<input type="checkbox"/> Acidize	<input type="checkbox"/> Deepen	<input type="checkbox"/> Production (Start/Resume)	<input type="checkbox"/> Water Shut-Off	
<input checked="" type="checkbox"/> Subsequent Report	<input type="checkbox"/> Alter Casing	<input type="checkbox"/> Hydraulic Fracturing	<input type="checkbox"/> Reclamation	<input type="checkbox"/> Well Integrity	
<input type="checkbox"/> Final Abandonment Notice	<input type="checkbox"/> Casing Repair	<input type="checkbox"/> New Construction	<input type="checkbox"/> Recomplete	<input type="checkbox"/> Other	
	<input type="checkbox"/> Change Plans	<input checked="" type="checkbox"/> Plug and Abandon	<input type="checkbox"/> Temporarily Abandon		
	<input type="checkbox"/> Convert to Injection	<input type="checkbox"/> Plug Back	<input type="checkbox"/> Water Disposal		

13. Describe Proposed or Completed Operation: Clearly state all pertinent details, including estimated starting date of any proposed work and approximate duration thereof. If the proposal is to deepen directionally or recompleat horizontally, give subsurface locations and measured and true vertical depths of all pertinent markers and zones. Attach the Bond under which the work will be perfonned or provide the Bond No. on file with BLM/BIA. Required subsequent reports must be filed within 30 days following completion of the involved operations. If the operation results in a multiple completion or recompleat in a new interval, a Form 3160-4 must be filed once testing has been completed. Final Abandonment Notices must be filed only after all requirements, including reclamation, have been completed and the operator has detennined that the site is ready for final inspection.)

6/2022- Drake well services set plugs per the NMOCD under the assumption it was a state well.


OXY USA INC ATTEMPTED TO RE-ENTER THE WELLBORE TO SET DEEPER PLUGS. CASING DAMAGE WAS ENCOUNTERED, AND PLUGS COULD NOT BE SET DEEPER.

PLEASE SEE ATTACHED FINAL WELLBORE DIAGRAM AND PA JOB SUMMARY WITH DETAILS FROM THE JOB.

Accepted for Record - contact Rick Flores at rflores@blm.gov for reclamation.

14. I hereby certify that the foregoing is true and correct. Name (Printed/Typed)
STEPHEN JANACEKTitle **REGULATORY ENGINEER**

Signature



Date

12/19/2023**THE SPACE FOR FEDERAL OR STATE OFFICE USE**

Approved by

Title **Petroleum Engineer**Date **01/12/2024**

Conditions of approval, if any, are attached. Approval of this notice does not warrant or certify that the applicant holds legal or equitable title to those rights in the subject lease which would entitle the applicant to conduct operations thereon.

Office **RFO**

Title 18 U.S.C Section 1001 and Title 43 U.S.C Section 1212, make it a crime for any person knowingly and willfully to make to any department or agency of the United States any false, fictitious or fraudulent statements or representations as to any matter within its jurisdiction.

(Instructions on page 2)

Cato San Andreas Unit # 52
API # 3000520009

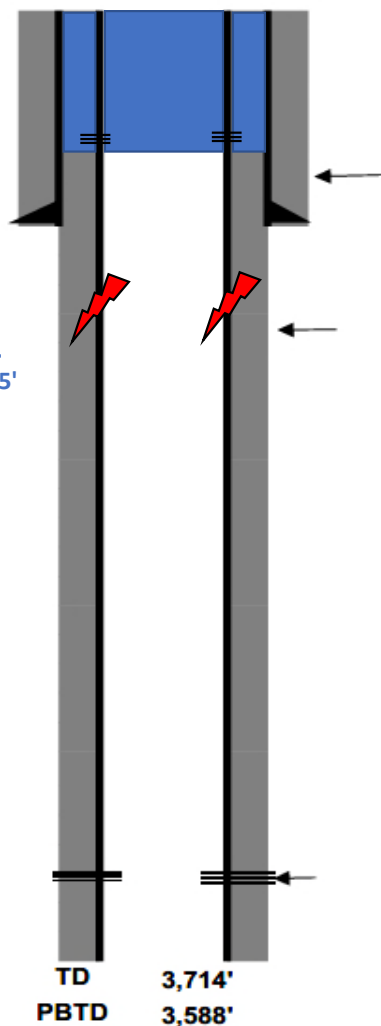
Final Wellbore 12.19.2023

Surf Lat 33.62878
Surf Long -103.83869

Set cmt retainer at 551'. Could not pump into retainer. Spot 25 sx cmt 551' to 254'. perf casing at 110' and 60'. No injection rate into either perf set. Spot 16 sx cmt from 162' to surface.

Casing damage starting at 681'. Deepest depth reached was 785' and then Red Beds fell in and pipe would stick.

6/2022- Drake well services set plugs per the NMOCD under the assumption it was a state well.



Surface Casing
12 1/4 in. hole @ 483 '
8 5/8 in. casing @ 483 '
w/ 300 sx cement TOC- Surf-Circ

Production Casing
7 7/8 in. hole @ 3714 '
4 1/2 in. casing @ 3714 '
w/ 800 sx cement TOC- 4 '

[10540] Cato; San Andreas Perfs
Top 3,536'
Bottom 3,651'

Cato San Andres Unit #052

30-005-20009

PA Job Summary

FINAL SUMMARY : W/ CMT REPORT

MISU & RU. 0 PSI on CSG. Function Test BOPE. ND WH & NU BOPE. Drill out CMT from 10' down to 668'. Feel out of CMT. Attempt to work bad spot from 678' able to make it down to 785'. Red bed begin to stick pipe. Could not work past 678' for several days without red bed falling in on TBG Contact BLM & Oxy Management to Plug Well. Set CMT Retainer @ 551'. Est Rate & Could not Pump into CMT Retainer. Spot 25 sxs of Class C CMT to 254'. Perf CSG @ 60' No Injection Rate. Perf CSG @ 110'. No Injection Rate. Spot CMT from 162' to surface. L/D WS TBG. ND BOPE. Top Fill CSG. RDSU. Well is plugged

Day 18

11/7/2023

CREW DROVE FROM TOWN TO LOCATION, HTGSM, CHECK TBG AND CSG PRESSURES "0". SET AND TEST COFO. "OK" RIH TAG TOC @ 389'. SPOT 10 SX 2.3 BBLS @ 389 TO 260. POOH TO DERRICK L/D 3 JTS. WOC. RIH TAG TOC @ 254 W/ 8 JTS. POOH L/D TBG. RIG UP WIRELINE AND BUILD PERF. RIH AND PERF @ 60 FT. POOH. R/D WIRELINE. ATTEMPT TO ESTABLISH INJECTION RATE. PRESSURED UP TO 500 PSI. SPOKE TO MR ZOTA AND PLAN WAS MADE TO RE PERF AT 110' (50 FT BELOW PREVIOUS PERF). R/U WIRELINE, AND BUILD PERF. RIH AND PERF AT 110'. POOH AND RIG DOWN WIRELINE. ATTEMPT TO ESTABLISH INJECTION RATE. PRESSURED UP TO 500. SPOKE AGAIN TO MR ZOTA, AND PLAN WAS MADE TO CIRC. TO SURFACE. P/U 5 JTS. EOT @ 162. CIRCULATED 15 SX 3.5 BBLS CLASS "C" CEMENT. TO SURFACE. POOH L/D TBG. RIG DOWN WORKING FLOOR, AND LAY OUT ALL HANDLING TOOLS. NIPPLE DOWN BOP AND TOP OFF CMT TO SURFACE. FLOOD CASING VALVES. AND RIG DOWN CMT PUMP. RIG DOWN PULLING UNIT AND SECURE WELL

Day 17

CREW DROVE TO LOCATION. HTGSM, CHECK TBG AND CSG "0". SET AND TEST COFO. "OK". L/D POWER SWIVEL. R/D REV. UNIT. POOH. L/D BIT. P/U PACKER. RIH AND SET PACKER @ 551. ESTABLISH INJECTION RATE. 1.5 BPM @ 0PSI. TEST CASING @ 500 PSI. ABOVE PACKER. HELD FOR 30 MIN. POOH. L/D PACKER. P/U CICR. RIH AND SET CICR. @ 551. ATTEMPT TO INJECT. PRESSURED UP TO 500 PSI. (NOTIFY STEPHEN J. AND NMOCD PLAN FORWARD TO SPOT 25 SX ABOVE CICR). UNSTING FROM CICR HAD ISSUES GETTING PINS TO SHEAR. POOH L/D CICR TOOL. RIH TO 551. BREAK CIRCULATION. AND SPOT 25 SX 5.8 BBLS. AND DISP W/ 1 BBLS. POOH WOC, SION. SECURE LOCK DOWN PINS

Day 16

11/3/2023

Crew HTGSM. Discuss Hand & Finger Placement. Operator set COFO. 0 PSI on TBG & CSG. Est Circulation, Begin to clean out wellbore from 660' down to 685'. Severe red bed in returns. Continued to work down and losing hole. Swiveled out of hole to 558'. Circulated well clean. Rig down power swivel. Crew conduct BOPE closing drill. Close all valves. Secure Location. SION

Day 15

11/2/2023

Crew HTGSM. Discuss hand & finger placement. Operator set COFO. 0 PSI on TBG & CSG. Begin to clean out wellbore from 608' down to 700'. Begin to lose hole. Pieces of cement & red bed in returns.

Swiveled back up hole to 656'. Worked back down to 688'. Begin to lose hole. Continued to work from 656' to 688'. Red bed and pieces of cement cont in returns. Swiveled out of hole to 558'. Circulated well clean. Close BOPE & Lock Pins. Close all valves. Secure Location. SION

Day 14
11/1/2023

Crew HTGSM. Discuss Hand & Finger Placement. Set COFO. 0 PSI on TBG & CSG. Begin to clean out wellbore from 670' down to 705'. Had to work through several times. Begin to lose hole & swiveled back out of hole to 656'. Begin to see chucks of cement w/ more red bed in returns. Worked back down to 688' and unable to maintain circulation red bed continued to fall in on TBG. Swiveled out of hole to 558'. Circulated well clean. Close BOPE & Lock Pins. Close all valves. Secure Location.

Day 13
10/31/2023

Crew HTGSM. Discuss Hand & Finger Placement. Operator set COFO. 0 PSI on TBG & CSG. POOH w/ TBG. Un-plug bit & cross over. RIH w/ 3-7/8 bit & TBG to 558'. R/U Power Swivel. Cleaned out wellbore down to 752'. TBG begin to stick due to redbed. Had to swivel up to 590'. Begin to make clean out to 688'. Begin to lose hole Had to swivel back up to 558'. Circulated well clean. Close BOPE & Lock Pins. Close all valves. Secure Location

Day 12
10/30/2023

Crew HTGSM. Discuss Hand & Finger Placement. Operator set COFO. 0 PSI on CSG. RIH w/ 3-1/2 Bit & Tag up @ 660'. R/U Power Swivel. Begin to clean out wellbore down to 668'. Bit begin to plug up. Attempt to unplug & no luck. R/D Power Swivel. POOH w/ TBG & Bit. Cross over plugged up. RIH w/ 3-7/8 bit & TBG. Tag up @ 496'. R/U Power Swivel Cleaned out bridge. Cleaned out wellbore from 636' down to 698'. Begin to lose hole & had to swivel TBG back up 621'. Circulated well clean. Close BOPE & Lock Pins. Close all valves. Secure Location

Day 11
10/27/2023

Crew HTGSM. Discuss Hand & Finger Placement. Operator Set COFO. 0 PSI on CSG. RIH w/ 3-7/8 Bit & WS TBG down to 635'. Rig up power swivel. Cleaned out wellbore down to 687'. Circulated well clean. Red bed in returns. Rig down swivel. POOH w/ TBG & Bit. RIH w/ notch collar & TBG to 557'. R/U Wireline. Ran Camera and found good casing down to 565'. POOH w/ Camera. RIH w/ TBG down to 657'. Ran Camera and found CSG damaged. Pulled up to 630'. Pulled images and CSG damaged. POOH w/ Camera. R/D Wireline. POOH w/ TBG & notch collar. Close BOPE & Lock Pins. Close all valves. Secure Location. SION

Day 10
10/26/2023

Crew HTGSM. Discuss Hand & Finger Placement. Set COFO. 0 PSI on CSG. RIH w/ 3-7/8 Taper Mill. Tag up @ 678'. R/U Power Swivel. Rotate 28 RPM & feathered CSG for 2 hour & made 2-1/2 ft. Begin to circulated & mill down to 686'. TBG begin to stick & swivel torqued up. Had to swivel out of hole w/ 5 JTs. R/D Power Swivel. POOH w/ TBG & Mill. Bottom 10' of BHA caked w/ red bed. RIH w/ 3-1/2 bit & TBG. Tag up @ 638'. R/U Power Swivel. Attempt to break circulation & TBG plugged. R/D Power Swivel. POOH w/ TBG & bottom 5' of BHA covered in red bed. Close BOPE & Lock Pins. Close all valves. Secure Location

Day 9

10/25/2023

Crew HTGSM. Discuss Hand & Finger Placement. Operator set COFO. RIH w/ 3-7/8 taper mill & tag up @ 4'. RIH w/ 3-7/8 Bit. Rig up Power Swivel Reamed out CSG from 4' down to 663'. Circulated well clean. R/D Power Swivel. Crew conduct BOPE closing drill. L/D 21 Jts of TBG. Close BOPE & Lock Pins. Close all valves. Key mechanic work on leaking PTO pump. Secure Location. SION

Day 8

10/24/2023

Crew HTGSM. Discuss Hand & Finger Placement. Set COFO. 0 PSI on TBG & CSG. Begin to drill out CMT plug from 573' to 668'. Feel out of CMT & tag bad spot @ 676'. Swivel begin to torque up. Red bed in returns. Circulated well clean. Rig down Swivel. POOH w/ 16 JTs of TBG. L/D 6-3-1/8" Drill Collars & Bit. Close BOPE & Lock Pins. Close all valves. Secure Location. SION

Day 7

10/23/2023

Crew HTGSM. Discuss Hand & Finger Placement. Operator set COFO. 0 PSI on TBG & CSG. R/U Power Swivel. Begin to drill out CMT w/ 3-1/2 bit, 6-3-1/8" Drill Collars, & 9 JTs of TBG. Drill out down to 573' w/ 12 Jts of TBG. Circulated well clean. Close BOPE & Lock Pins. Close all valves. Secure Location. SION

Day 6

10/19/2023

Crew HTGSM. Discuss Hand & Finger Placement. 0 PSI on TBG & CSG. Drill out CMT plug from 367' down to 480'. Circulated well clean. Close BOPE & Lock Pins. Close all valves. Secure Location. SION

Day 5

10/18/2023

Crew HTGSM. Discuss Hand & Finger Placement. Set COFO. 0 PSI on TBG & CSG. Begin to drill out CMT from 142' to 250'. Circulated well clean. Close BOPE & Lock Pins. Close all valves. Secure Location

Day 4

10/17/2023

Crew HTGSM. Discuss Hand & Finger Placement. Set COFO. 0 PSI on TBG & CSG. Begin to drill out CMT from 142' to 250'. Circulated well clean. Close BOPE & Lock Pins. Close all valves. Secure Location

Day 3

10/16/2023

Crew HTGSM. Discuss Hand & Finger Placement. Set COFO. 0 PSI on CSG. RIH w/ 3-1/2 Bit & 3-3 1/8" Drill Collars. Tag up @ 72'. R/U Power Swivel. Begin to drill out CMT from 72' to 142'. Circulated well clean. Close BOPE & Lock Pins. Close all Valves. Secure Location

Day 2

10/13/2023

Crew HTGSM. Discuss Hand & Finger Placement. 0 PSI on CSG. RIH w/ 3-1/2 Bit & Drill Collar. R/U Power Swivel. Begin to drill out CMT from 10' to 73'. R/D Power Swivel. POOH w/ Drill Collars & Bit. Close BOPE & Lock Pins. Close all valves. Secure Location.

Day 1

10/12/2023

Crew HTGSM. Discuss Hand & Finger placement. Road equipment to location. Spot in base beam, pulling unit & all plugging equipment. Crew replaced SRL on rig. R/U Pulling Unit. Function Test BOPE. 0 PSI on CSG. ND WH & NU BOPE. Spot in reverse unit & WS TBG. SION

CSAU 52

30-005-20009

CUT AND CAP COMPLETE ON 11/11/2023.

District I
1625 N. French Dr., Hobbs, NM 88240
Phone:(575) 393-6161 Fax:(575) 393-0720
District II
811 S. First St., Artesia, NM 88210
Phone:(575) 748-1283 Fax:(575) 748-9720
District III
1000 Rio Brazos Rd., Aztec, NM 87410
Phone:(505) 334-6178 Fax:(505) 334-6170
District IV
1220 S. St Francis Dr., Santa Fe, NM 87505
Phone:(505) 476-3470 Fax:(505) 476-3462

State of New Mexico
Energy, Minerals and Natural Resources
Oil Conservation Division
1220 S. St Francis Dr.
Santa Fe, NM 87505

CONDITIONS

Action 360198

CONDITIONS

Operator: OXY USA INC P.O. Box 4294 Houston, TX 772104294	OGRID: 16696
	Action Number: 360198
	Action Type: [C-103] Sub. Plugging (C-103P)

CONDITIONS

Created By	Condition	Condition Date
loren.diede	None	8/6/2024